

# Design of optimal cruise control considering road and traffic information <sup>★</sup>

Balázs Németh<sup>\*</sup> Alfréd Csikós<sup>\*\*</sup> Péter Gáspár<sup>\*</sup>  
István Varga<sup>\*\*</sup>

<sup>\*</sup> *Systems and Control Laboratory, Computer and Automation  
Research Institute, Hungarian Academy of Sciences  
Kende u. 13-17, H-1111 Budapest, Hungary*

<sup>\*\*</sup> *Department of Control and Transport Automation,  
Budapest University of Technology and Economics, Hungary  
Bertalan L. u. 3, H-1111 Budapest, Hungary*

---

**Abstract:** The paper presents the design of cruise control systems which consider the road and traffic information in the design of speed trajectory. Several factors are considered such as road inclinations, traffic lights, preceding vehicles, speed limits, engine emissions and traveling time. The purpose of speed design is to reduce the longitudinal energy, fuel consumption and engine emissions in such a way that the traveling time does not increase significantly. The signals obtained from the road and traffic are handled jointly with the dynamic equations of the vehicle and built into the control design of speed. The robust  $\mathcal{H}_\infty$  control is designed to achieve the speed of the cruise control, which is able guarantee robustness of the system against disturbances and uncertainties.

*Keywords:* vehicle cruise control, look-ahead control, multi-criteria optimization, robust stability and performance.

---

## 1. INTRODUCTION AND MOTIVATION

The driveline system has an important role in the energy consumption and emission of vehicle, therefore the development of longitudinal control systems is in the focus of research and the industry. Adaptive Cruise Control (ACC) systems guarantee the adaptation of the vehicle to the environment, such as momentary road disturbances, road slopes, rolling resistances, speed of preceding vehicles. However these systems are not able to take into consideration the road and traffic information expected from the next road sections, such as speed limits, road inclinations.

In this paper a longitudinal control system is proposed which is able to consider predicted road and traffic information in the design of the longitudinal control force. Using the signals of road inclinations and speed limits fuel consumption, the energy required by the actuators and engine emissions can be reduced. Moreover, the unnecessary activation of the brake is also undesirable because of the wear of the brake pad/disc and the loss of kinetic energy. The control of longitudinal dynamics requires the integration of these control components, see Kiencke and Nielsen (2000); Trachtler (2004).

Several methods have already been published in the topic of look-ahead control, see Ivarsson et al. (2009); Nouveliere et al. (2008). The robust  $\mathcal{H}_\infty$  control design method was proposed by Németh and Gáspár (2011) for the design of vehicle speed based on road inclinations. In another paper

the emissions of the vehicle was also taken into consideration, see Németh et al. (2012). The optimization problem was handled by using a receding sliding horizon control approach in Hellström et al. (2010); Passenberg et al. (2009). The terrain and traffic flow were modeled stochastically using a Markov chain model in Kolmanovsky and Filev (2009). In Hellström et al. (2009) the approach was evaluated in real experiments.

This paper focuses on the design of vehicle speed based on signals obtained from the road and traffic. Several factors are considered such as road inclinations, traffic lights, preceding vehicles, speed limits, engine emissions and traveling time. Since the factors result in different solutions, a balance should be achieved between them by using multi-objective optimization. The novelty of the paper is to consider the actual signals of traffic light at the design of speed trajectory. In this way it is possible to reduce the number of unnecessary brakings, accelerations or stop-and-starts, which increase the required energy, fuel consumption, and engine emissions. Since the proposed method also handles speed limits and preceding vehicles, it can be applied in highway and urban traffic as well.

The paper is organized as follows: Section 2 presents the factors of the speed design such as road inclinations, emissions and on the oncoming road intersections. The design of the control strategy based oncoming traffic light is detailed in Section 3. Section 4 presents the multi-criteria optimization of vehicle cruise control by the appropriate choice of prediction weights. Section 5 shows the operation of the control system on a transportational route. Finally, Section 6 summarizes the conclusion remarks.

---

<sup>★</sup> The research was supported by the Hungarian National Scientific Research Fund (OTKA) through grant No. CNK-78168. The work was also supported by the grant TÁMOP-4.2.2.B-10/1-2010-0009.

## 2. FACTORS OF SPEED DESIGN FROM ROAD AND TRAFFIC

### 2.1 Speed design for road inclinations

The selection of speed trajectory is based on road inclinations and speed limits. Since the design of optimal speed has already been proposed in an earlier paper, only a brief summary is given, see Németh and Gáspár (2011).

The road inclinations are considered in the design of the longitudinal control force. On a downhill slope the speed of the vehicle increases, thus the control force of the vehicle before the slope may decrease. Consequently, the brake system can be activated later or it is not necessary to activate it at all. Before the section where a speed limit is imposed the speed can be reduced, therefore less braking energy is necessary for the vehicle. By choosing the appropriate speed according to the road and traffic information, the number of unnecessary accelerations and brakings and their durations can be significantly reduced.

For the consideration of predicted information, the route of the vehicle is divided into  $n$  sections using  $n+1$  number of points as Figure 1 shows. The division of the route is not necessarily of equal lengths. The rates of the inclinations of the road and those of the speed limits are assumed to be known at the endpoints of each section. In each section points of the road reference velocities, which depend on the speed limits, are defined. Speed at section point  $j$  should reach the predefined reference speed  $v_{ref,j}$   $j \in [1, n]$ . It is an important goal to track the momentary value of the speed, which is formulated in the following form:  $\dot{\xi}_0^2 \rightarrow v_{ref,0}^2$ .

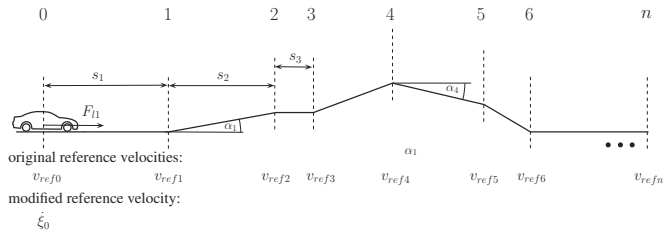


Fig. 1. Division of predicted road

The road sections to be taken into consideration are qualified by different weights. A weight  $Q$  is applied to the initial speed and weights  $\gamma_i$ ,  $i \in [1, n]$  are applied to the further reference velocities. A weight  $W$  represents the tracking of the speed of the preceding vehicle  $v_{lead}$  in order to avoid a collision, see Németh and Gáspár (2011). The safety distance between the vehicles is determined according to directives:  $d_{st} = 0.1\dot{\xi}_0 + \dot{\xi}_0^2/150$ . The prediction weights should sum up to one, i.e.,  $W + Q + \sum_{i=1}^n \gamma_i = 1$ . The interpretation of the importance of  $W, Q, \gamma_i$  prediction weights is the following. If  $Q$  weight is set 1 and the other weights are 0 the simple cruise control is achieved. If equal weights for  $Q$  and  $\gamma$  are set and  $W$  is 0 in the cruise control the predicted road sections have the same importance. When  $W = 1$  and  $Q = \gamma_i = 0$ ,  $i \in [1, n]$  only the tracking of the leader vehicle is realized. The optimal determination of weights has an important role,

i.e. to achieve a balance between momentary speed and the effect of the road slopes.

In the design of the vehicle speed the prediction weights are taken into consideration. The momentary vehicle speed  $\dot{\xi}_0$  must be modified in the following way:

$$\lambda = \sqrt{\vartheta - 2s_1(1 - Q - W)(\dot{\xi}_0 + g\sin\alpha)} \quad (1)$$

where the value  $\vartheta$  depends on the predicted road slopes, the reference speeds and the prediction weights:

$$\vartheta = Wv_{lead}^2 + Qv_{ref,0}^2 + \sum_{i=1}^n \gamma_i v_{ref,i}^2 + \frac{2}{m}(1 - Q - W) \sum_{i=1}^n (s_i F_{di,r} \sum_{j=i}^n \gamma_j). \quad (2)$$

The calculation of  $\lambda$  requires the measurement of the longitudinal acceleration  $\dot{\xi}_0$ . Consequently, the aim of the control design is to track the calculated speed trajectory:  $\dot{\xi}_0 \rightarrow \lambda$ .

### 2.2 Speed design for emissions

The pollution emerging from road traffic has become a serious environmental issue in the past decades. Modeling the amount and composition of exhaust gases is essential for an effective control aimed at minimizing emissions and fuel consumption. When individual vehicles are analyzed emission models can be classified into two categories based on the number of input variables: traffic situation models and average speed models. Input variables of the former models include information of the current traffic situation or more specifically, instantaneous acceleration in addition to the speed variable. Average speed models are used if no information is available of the current driving pattern apart from average speed and thus the output of the model is the emission assigned to validated measurement cycles of the average speed value.

Emission can be characterized by its temporal rate (emission rate function) or - throughout a journey - by its spatial rate (emission factor function). A standard method is that emission factors of the pollutants are modeled by convex rational functions of average vehicle speed, see e.g. the model COPERT. The emission factor functions are specific for different vehicle classes, fuel types, Euro norms and engine capacities. For vehicle type  $c$  and pollutant  $p$ :

$$ef^{p,c} = \left( \sum_{i=0}^m \beta_i^{p,c} \dot{\xi}(t) \right) / \left( \sum_{i=0}^n \delta_i^{p,c} \dot{\xi}(t) \right). \quad (3)$$

The following pollutants were modeled in the control design:  $CO, CO_2, NO_X$  and hydrocarbons ( $HC$ ). These are considered the most significant exhaust gases causing both global (greenhouse effect) and local harms (health problems, acid rain). Elaborating the reaction stoichiometrics of internal combustion engines a linear connection between the fuel consumption and the  $CO_2$  emission of a vehicle can be stated Tiwary and Colls (2010):  $ef^{CO_2,c} = K \cdot f^c$ , where  $f^c$  is the fuel consumption of a type  $c$  vehicle and  $K$  depends on the fuel type, e.g. in Diesel fuel  $K = 26.29$ . Unfortunately, further analytic relationships cannot be drawn among emission functions of the pollutants as secondary reactions of internal combustion engines depend on several

factors (i.e. engine and fuel type, engine load, technology of engine etc).

During the performance analysis the normed sum of emissions is examined:

$$e_{f_{total}}(t) = \sum_{c=1}^{N_c} \frac{e_{f_{CO_2}}(t)}{e_{f_{CO_2}}^{nom}} + \sum_{c=1}^{N_c} \frac{e_{f_{CO}}(t)}{e_{f_{CO}}^{nom}} + \sum_{c=1}^{N_c} \frac{e_{f_{HC}}(t)}{e_{f_{HC}}^{nom}} + \sum_{c=1}^{N_c} \frac{e_{f_{NOx}}(t)}{e_{f_{NOx}}^{nom}} \quad (4)$$

where  $e_{f_{nom}}^p = \max_{v \in [60,90]} e_{f^p}(v)$  denotes the nominal emission for pollutant  $p$ .

### 2.3 Speed design for oncoming intersections

In the proposed control the third criterion is the consideration of oncoming intersections. The proposed system uses the traffic signal scheduling information for the design of the reference speed of the controlled vehicles. This proposition involves the matching of traffic and vehicle control for which a certain hardware equipment is required. The technology is similar to that used in transit priority detection with the difference that the control intervention is executed in the vehicle only. In order to establish an effective cooperation both the infrastructure and the vehicle are equipped with communication devices.

Different communication systems using this layout are known: e.g the detection method using roadside beacons, the GPS-based detection method and the infrared detection method, see Gardner et al. (2009). The former two methods rely more on the devices applied to the infrastructure (e.g. roadside beacons). In the infrared detection method, which is widespread in the United States, the vehicle is detected by a standard traffic inductive loop detector (ILD) embedded in the pavement which alerts the signal controller of the approaching HDV. After receiving the entrance request, the traffic signal controller (TSC) sends the timing data of the traffic signal via an infrared emitter (most commonly located on the signal mast arm or span wire). The scheduling information is then received by the IR (Infrared) detector of the vehicle and further used for the control design. The layout is illustrated in Figure 2.

The main advantage of loop detection systems is that the system is compatible with commonly used loop detectors. It also does not require line-of-sight or visibility, and IR transponders may be set on already installed traffic controllers. The effective range of the system highly depends on the geographical layout of the intersection and may range up to 500 m.

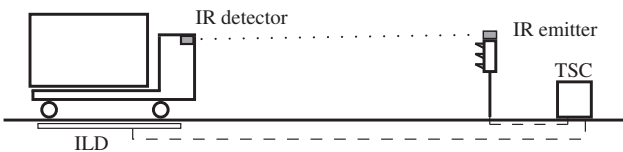


Fig. 2. Communication architecture of the transit vehicle system

## 3. CONTROL STRATEGY AT TRAFFIC LIGHTS

In the design of reference speed (1) the road inclinations, preceding vehicles, speed limits and reference velocities are taken into consideration. In the following a traffic light of the intersection as a further traffic signal is used in the speed design. It is assumed that the traffic lights are available in the design process. In the strategy the necessary traffic information is the distance between the vehicle and the traffic light  $s_{int}$ , the signal of the traffic light, unexpired time of actual signal of light. According to this information the control strategy of speed calculation is chosen making a decision logic, which is illustrated in Figure 3.

When the vehicle receives an information package of a traffic light, it makes a decision. The following scenarios are analyzed in three cases, there is a green signal in the route and in two additional cases there are red (or yellow) signals in the route.

**Case 1:** In the first case the vehicle reaches the intersection during the green signal without increasing its speed, i.e.,  $s_{int}/\dot{\xi}_0 \leq T_{gr}$ . However, the speed of vehicle may be reduced if the vehicle turns at the intersection. In this case the speed at the intersection must be modified to a safety cornering speed, thus  $\dot{\xi}_0 = v_{int}$ . It is achieved by setting the weight  $Q = 1$  and  $v_{ref,0} = v_{int}$ . The condition for this case is:

$$\frac{2s_{int}}{\dot{\xi}_0 + v_{int}} \leq T_{gr} \quad (5)$$

where  $T_{gr}$  is unexpired green time. Here the linear relationship between the initial speed  $\dot{\xi}_0$  and the final speed  $v_{int}$  is exploited. Note that in straight motion the speed and the weights are not modified, thus  $v_{int} = \dot{\xi}_0$ .

**Case 2:** In the second case the vehicle reaches the intersection during green signal, if the speed is increased by the maximum allowed speed. In this case the speed at the intersection must be modified to the original reference speed, thus  $\dot{\xi}_0 = v_{ref,0}$ . It is achieved by setting the weight  $Q = 1$ . The condition for this case is:

$$\frac{s_{int}}{v_{ref,0}} \leq T_{gr} \quad (6)$$

In this scenario the intersection overwrites the modified reference speed and high acceleration and deceleration are applied.

**Case 3:** If the vehicle does not reach the intersection during the green signal, the deceleration of the vehicle and a safety stop condition are required. They are achieved by setting the speed  $v_{lead} = 0$  and modifying the weight  $W$  in the following way:

$$W = 1 - \frac{s_{int}^2}{s_{int,max}^2}, \quad (7)$$

where  $s_{int,max}$  is the distance between the vehicle and the traffic light when the signal arrives. Thus, in the calculation of the speed the predicted road information becomes less important when the vehicle is approaching the traffic light and the stopping maneuver is more relevant, i.e.,  $\dot{\xi}_0 \rightarrow 0$ .

The following scenarios cover the intersection when the signal is red (or yellow).

**Case 4:** If the signal is red it is analyzed how much time elapses, before the vehicle arrives at the intersection. If during this time the red signal turns to green in straight motion the speed and the weights are not modified, thus  $v_{int} = \dot{\xi}_0$ . However, the speed of vehicle may be reduced if the vehicle turns at the intersection. In this case the speed at the intersection must be modified to a safety cornering speed, thus  $\xi_0 = v_{int}$ . It is achieved by setting the weight  $Q = 1$  and  $v_{ref,0} = v_{int}$ . The condition for this scenario is:

$$\frac{2s_{int}}{\xi_0 + v_{int}} \geq T_{red} \quad (8)$$

where  $T_{red}$  is unexpired red time. Note that at straight motion the speed and the weights are not modified, thus  $v_{int} = \dot{\xi}_0$ .

**Case 5:** If the signal is red and the unexpired red time is too much, it is necessary to stop the vehicle. In this scenario  $W$  is influenced according to (7).

Also note that in the previously formulated decision logic the other preceding vehicles are ignored. In the case of a preceding vehicle  $W$  is modified according to Németh and Gáspár (2011).

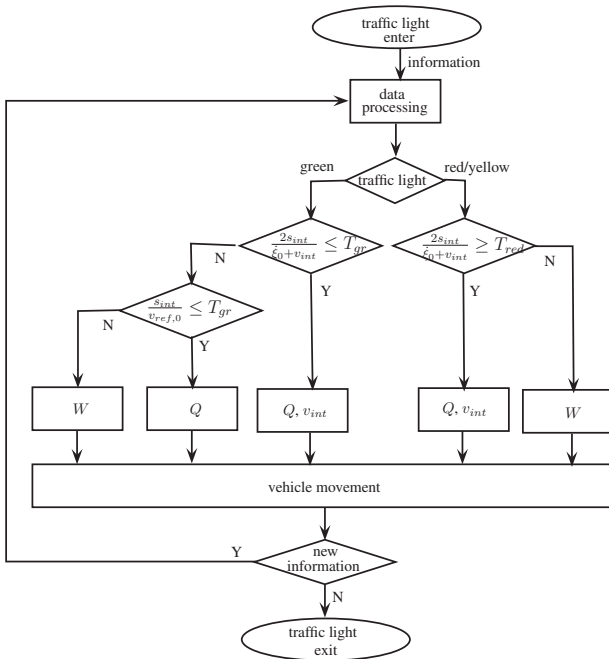


Fig. 3. Flowchart of the traffic lights strategy

## 4. FORMULATION OF PERFORMANCE CRITERIA

### 4.1 Multicriteria optimization

The aim of this section is to find an optimal speed  $\dot{\xi}_0$ , which guarantees the minimization of the control force, traveling time and emission. The fulfillment of these performances individually results in different  $W, Q, \gamma_i$  weights according to equation (1).

In the minimization tasks  $W$  is handled as an exogenous signal, which is set according to different special scenarios, i.e., preceding vehicles or traffic lights, see Section 3. Thus,

in the optimization task the weight  $W = 0$  is set. During travelling  $Q$  and  $\gamma_i$  are calculated and applied. However, in the case of preceding vehicles or towards intersections they are overwritten by weight  $W$  in such a way that  $W + Q + \sum_{i=1}^n \gamma_i = 1$  is guaranteed.

In the first optimization criterion the longitudinal force  $F_{l1}$  must be minimized, i.e.,  $|F_{l1}| \rightarrow Min$ . The force can be expressed as the linear function of prediction weights by using equation (1):

$$F_{l1}(Q, \gamma) = \beta_0(Q) + \beta_1(Q)\gamma_1 + \beta_2(Q)\gamma_2 + \dots + \beta_n(Q)\gamma_n \quad (9)$$

where  $\beta_i$  are the coefficients of  $Q$  and  $\gamma_i$ . In practice, however, the following optimization form is used because of the simpler numerical computation:

$$F_{l1}^2 \rightarrow Min \quad (10)$$

The optimal solution leads to  $\bar{Q}$  and  $\bar{\gamma}_i$ , where  $0 \leq \bar{Q}, \bar{\gamma}_i \leq 1$  and  $\bar{Q} + \sum \bar{\gamma}_i = 1$ . The solution of the nonlinear optimization problem is found in Gill et al. (1981).

The second optimization criterion is the minimization of traveling time. In this case the vehicle must travel at the predefined reference speed. Therefore the difference between momentary speed and reference speed must be minimized, i.e.,

$$|v_{ref,0} - \dot{\xi}_0| \rightarrow Min. \quad (11)$$

It means that this optimization criterion can be fulfilled if the road inclinations are ignored. The optimal solution of the performance (1) is:  $\bar{Q} = 1$  and  $\bar{\gamma}_i = 0, i \in [1, n]$

The emission model of the vehicle is approximated by using a second order polynomial function according to equation (3):  $ef_{total}(t) = \alpha_0 + \alpha_1 \dot{\xi}_0 + \alpha_2 \dot{\xi}_0^2$ , where  $\alpha_0, \alpha_1, \alpha_2$  are constant parameters. There is a formal analogy between  $ef_{total}(t)$  and the unmeasured longitudinal disturbances  $F_{d1,o}$ , see Németh et al. (2012). In the third optimization criterion the total emission  $ef_{total}(t)$  must be minimized, i.e.,  $|ef_{total}(t)| \rightarrow Min$ . In practice, the following optimization form is used:

$$(ef_{total}(t))^2 \rightarrow Min. \quad (12)$$

This minimization leads to a quadratic optimization problem, similarly to the first performance. The solutions of the optimization are denoted by  $\hat{Q}, \hat{\gamma}_i$  weights.

It is important to emphasize that the three performances (minimization of longitudinal force, traveling time or emission) result in different prediction weights. Thus, it is necessary to guarantee a tradeoff between them. In the multicriteria optimization three further performance weights are introduced. The roles of these factors are different. Performance weight  $R_1$  is related to the importance of the minimization of the longitudinal control force, performance weight  $R_2$  is related to the minimization of traveling time, while performance weight  $R_3$  is related to the importance of emission.

Since there is a constraint on the performance weights:  $R_1 + R_2 + R_3 = 1$ , a balance between the optimizations tasks can be achieved. The form of the final weights are the following:

$$Q = R_1 \bar{Q} + R_2 \hat{Q} + R_3 \hat{Q} = R_1 \bar{Q} + R_2 + \hat{Q} R_3 \quad (13a)$$

$$\gamma_i = R_1 \bar{\gamma}_i + R_2 \hat{\gamma}_i + R_3 \hat{\gamma}_i = R_1 \bar{\gamma}_i + R_3 \hat{\gamma}_i, \quad (13b)$$

with  $i \in [1, n]$ . The calculated multi-criteria optimal  $Q, \gamma_i$  prediction weights with the exogenous  $W$  are used for the calculation of the modified reference speed  $\lambda$ , see (1), and they are used during the travelling.

#### 4.2 $\mathcal{H}_\infty$ based robust control design

During traveling different disturbances, which are not considered in the speed design, influence the vehicle dynamics. Thus, it is necessary to find a robust speed controller  $K$ , which is able to track the calculated speed value. The controller must guarantee robustness against external disturbances, such as sensor noises and road disturbances, and handle unmodelled disturbances.

The purpose of tracking is to ensure that the system output follows a reference value with an acceptably small error, which is the performance of the system. The control problem is as follows:

$$|\lambda - \dot{\xi}_0| \longrightarrow Min! \quad (14)$$

where parameter  $\lambda$  is the reference value according to (1). Thus, the performance signal is  $z = \dot{\xi}_0 - \lambda$ .

The standard form of the closed-loop interconnection structure, which includes the feedback structure of the model  $P$  and controller  $K$ , is shown in Figure 4. The

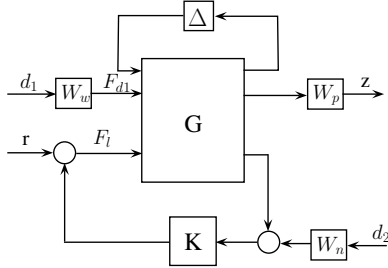


Fig. 4. Closed-loop interconnection structure

control design is based on a weighting strategy. The purpose of weighting function  $W_p$  is to define the performance specifications of the control system. In the selection of  $W_p$  an accurate matching is required at low frequencies and a less accurate matching is acceptable at higher frequencies. The weighting function  $W_p$  is selected as  $W_p = \alpha/(Ts+1)$ , where  $\alpha$  and  $T$  are constants. Here, it is required that the steady state value of the tracking error should be below  $1/\alpha$  in steady-state.

Three additional weights are also applied.  $W_n$  reflects to the speed sensor noise, while  $W_w$  represents the effect of longitudinal disturbances. In the modeling an unstructured uncertainty is modeled by connecting an unknown but bounded perturbation block ( $\Delta$ ) to the plant. The magnitude of multiplicative uncertainty is handled by a weighting function  $W_u$ . The weighting functions  $W_u, W_w$  and  $W_n$  are selected in linear and proportional forms.

## 5. SIMULATION RESULTS

In this section the operation of the vehicle system is analyzed through simulation examples. Both road and

traffic information are taken into consideration. Note that in the simulation example only the longitudinal force will be in the focus. The balance between the three performances are analyzed in another paper, see Németh et al. (2012)

In the simulation examples two cruise control systems are compared. The system which uses a conventional adaptive cruise control (ACC) ignores the predicted weights. This system always tracks predefined  $v_{ref,i}$  reference speeds. The system which uses a cruise control (Proposed) considers the road and traffic conditions through predicted weights. Consequently, this system is able to modify the reference speed during travelling. In the figures the proposed control is denoted by solid line, while the conventional control is denoted by dashed line. Figures show the time responses of the simulation, i.e., the speed, the longitudinal force, the unexpired time and the weight  $W$ .

In the first simulation example the vehicle arrives within the range of the traffic light, which is red. Moreover, the unexpired red time is long, thus it is necessary to stop the car, see Case 5 in Section 3. The simulation starts when the distance between the vehicle and the traffic light is 300 m, but the range of the traffic light is 100 m. The proposed control receives the information package of the traffic light at 200 m, therefore vehicle speed is reduced up to this point. The unexpired red time decreases as Figure 5(c) shows. To guarantee the stopping of the vehicle, it is necessary to increase  $W$  weight, which is shown in Figure 5(d). The conventional control reduces the speed abruptly, when the vehicle is close enough to the traffic light, see Figure 5(a). Thus, both the duration and the magnitude of the longitudinal force are greater, see Figure 5(b). Less longitudinal force and energy are required during the journey in the proposed control method. The saved longitudinal force is about 16% compared to the conventional cruise control system. Consequently, using the proposed control strategy smaller energy consumption is achieved.

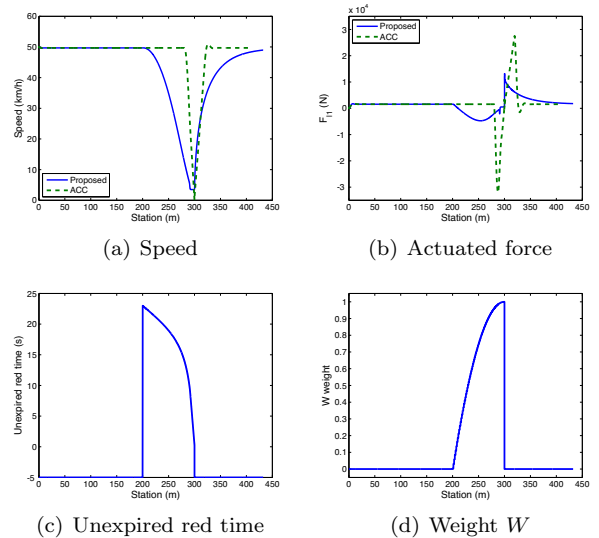


Fig. 5. Traffic light with long unexpired redtime

In the second simulation example the vehicle receives the green signal in the range of the traffic light. It shows that during the green signal the vehicle does not reach the



intersection, see Case 3 in Section 3. Figure 6(c) shows the unexpired green time and then the red time. Thus, the speed must be reduced. The requirement of the deceleration and the safety stopping at the traffic lamp is defined by the modification of weight  $W$ , which is illustrated in Figure 6(d). The speed and the necessary longitudinal force are shown in Figures 6(a) and 6(b), respectively. Less longitudinal force and energy are required during the journey in the proposed control method. The saved longitudinal force is about 11% compared to the conventional cruise control system.

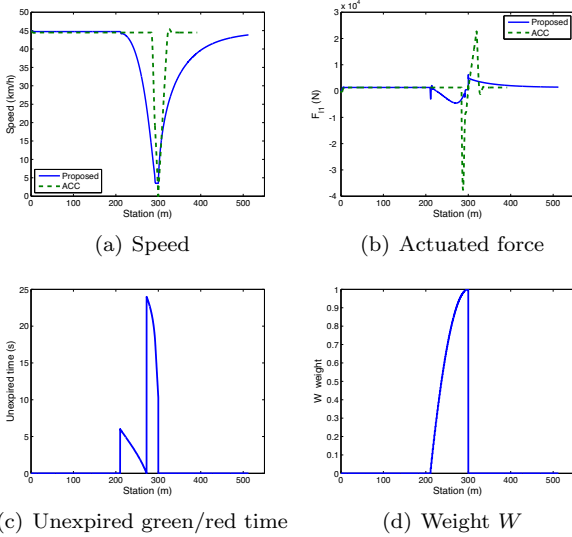


Fig. 6. Traffic light with green and red signals

In the third example the vehicle receives traffic information about the red signal, which turns to green. Figure 7(c) shows the short unexpired red time, which is followed by the green time. Thus, the speed must be reduced to the safety cornering speed  $v_{int}$ , see Figure 7(a). In this scenario  $v_{int}$  can be achieved during relatively long time with reduced longitudinal force by exploiting the adhesion coefficient of the road, see Figure 7(b). Less longitudinal force and energy are required during the journey in the proposed control method. The saved longitudinal force is 19% compared to the conventional cruise control system.

## 6. CONCLUSION

The paper has proposed the design of a cruise control system which is able to exploit predicted information received from both the road and traffic. The main result of the research is that the intersection with a traffic light is included in the speed design. An optimal speed trajectory is computed according to the balance between the three factors, i.e., the longitudinal force, traveling time and emission. The control design is based on the robust  $\mathcal{H}_\infty$  method, in which performance specifications, disturbances and uncertainties are considered. The simulation results show that the designed control reduces the energy required by the actuators.

## REFERENCES

Gardner, K., Souza, C., Hounsell, N., Shrestha, B., and Bretherton, D. (2009). Review of bus priority at traffic

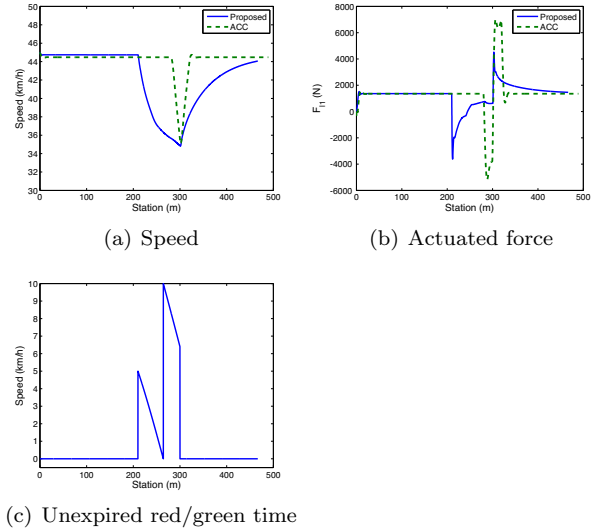


Fig. 7. ACC systems with a compulsory speed limit

signals around the world. *UITP Working Group Technical Report*.

Gill, P.E., Murray, W., and Wright, M. (1981). *Practical Optimization*. Academic Press, London UK.

Hellström, E., Ivarsson, M., Åslund, J., and Nielsen, L. (2009). Look-ahead control for heavy trucks to minimize trip time and fuel consumption. *Control Engineering Practice*, 17(2), 245–254.

Hellström, E., Åslund, J., and Nielsen, L. (2010). Horizon length and fuel equivalents for fuel-optimal look-ahead control. Munich.

Ivarsson, M., Åslund, J., and Nielsen, L. (2009). Look ahead control - consequences of a non-linear fuel map on truck fuel consumption. *Proc. Institution of Mechanical Engineers, Journal of Automobile Engineering*, 223, 1223–1238.

Kiencke, U. and Nielsen, L. (2000). *Automotive control systems for engine, driveline and vehicle*. Springer.

Kolmanovsky, I. and Filev, D. (2009). Stochastic optimal control of systems with soft constraints and opportunities for automotive applications. *IEEE Conference on Control Applications, St. Petersburg*.

Nouveliere, L., Braci, M., Menhour, L., and Luu, H. (2008). Fuel consumption optimization for a city bus. *UKACC Control Conference*.

Németh, B., Csikós, A., Varga, I., and Gáspár, P. (2012). Design of platoon velocity based on multi-criteria optimization. *7th IFAC Symposium on Robust Control Design (ROCOND)*.

Németh, B. and Gáspár, P. (2011). Road inclinations in the design of lpv-based adaptive cruise control. *18th IFAC World Congress*.

Passenberg, B., Kock, P., and Stursberg, O. (2009). Combined time and fuel optimal driving of trucks based on a hybrid model. *European Control Conference, Budapest*.

Tiwary, A. and Colls, J. (2010). *Air Pollution. Measurement, modelling and mitigation. Third edition*. Taylor and Francis Group, Routledge.

Trachtler, A. (2004). Integrated vehicle dynamics control using active brake, steering and suspension systems. *International Journal of Vehicle Design*, 36, 1–12.