



Housing Designs for Sullivan, IN

IAD 251 | Fall 2020
Interior Design Studio 1

Laurie Wojak
Department of Built Environment

This report represents original student work and recommendations prepared by students in the Indiana State University Sustainable City Program for the City of Sullivan. Text and images contained in this report may not be used without permission from Indiana State University. All information provided is not subject to publication.

ACKNOWLEDGMENTS

The authors wish to acknowledge and thank the city of Sullivan for making this project possible. We would like to thank Mayor Lamb and JD Wilson for their assistance and contributions that were instrumental to the entire project.

Mayor Clint Lamb, *City of Sullivan*

JD Wilson, *City of Sullivan*

ABOUT SC

The Sustainable Cities (SC) Program is an experiential learning partnership focusing on sustainability and cities in Indiana. Disciplines across the institution are tasked with addressing sustainability issues in a specific community by integrating these into experiential projects for ISU students. These problems range from strategic planning recommendations to community needs assessment, to understanding the impacts of waste strategies, and to mapping trail systems, and many other issues.

This is a year-long partnership, in which students and faculty in courses collaborate with one specific community partner on these projects. Communities throughout Indiana have leaders who want to make real change. These leaders are passionate about moving their cities forward into the future, but are often limited by lack of resources, staff, and budget.

The SC Program utilizes the innovation and energy of students and faculty to provide ideas that will address these issues. This relationship reinforces and strengthens our Indiana communities.

Each ISU course and community partner will produce tangible and relevant outcomes for the community partner while providing ISU students with real world project completion. This report serves as this outcome.

SC PLANNING COMMITTEE

Nancy Rogers, Ph.D., Vice President for University Engagement

Greg Bierly, Ph.D., Dean of the Honors College

Heather Dalton-Miklozek, Ph.D., Director of the Center for Community Engagement

Daniel Pigg, Director of the Business Engagement Center

Garrett Hurley, Interim Sustainability Coordinator

ABOUT SULLIVAN, IN

Sullivan, IN is the county seat of Sullivan County and serves as a hub for the towns of Carlisle, Dugger, Farmersburg, Hymera, Merom, and Shelburn. Sullivan, IN was founded in 1853 and became the county seat. The total city limits is 1.88 square miles, but there are more residents living outside of this area that contribute to the community of Sullivan. Today, Sullivan has the largest estimated population as an incorporated town in Sullivan County.

Sullivan faces many similar social, environmental, and economic challenges to other rural Hoosier towns and others that are unique to the city itself. There are approximately 8,500 people available for the labor force in Sullivan County. Since 2009, the unemployment rate has steadily decreased in the county. There's approximately 2,500 people that live in Sullivan but work in other counties. Some of the major employers in Sullivan are Raybestos Powertrain LLC, Hoosier Energy Emergency, Peabody Energy Corp., Sullivan County Community Hospital, and Raybestos Products Co.

A common thought among Sullivan community members is that students that go to college graduate and don't return to Sullivan. The highest degree attainment of folks 25 and older in Sullivan County is a high school diploma. Trade programs and certifications are a community concern from folks.

Sullivan has a vast history and many points of interest in the community. The Sullivan County Public Library is one of 1,679 libraries designated as a Carnegie library. The Sullivan Civic Center was recently renovated to provide a central location for community member sin Sullivan. The Heart of Sullivan is a civic organization that hosts many large events throughout the year. One of the largest events hosted in Sullivan is the Sullivan Annual Rotary Corn Festival.

This community is full of potential and is being led through a strategic plan intended to bolster its standing for Hoosiers. The ISU Sustainable Cities program intends to help reach that potential.

TABLE OF CONTENTS

Executive Summary.....	7
Introduction.....	8
Housing Design Overview.....	9
Design 1.....	10
Design 2.....	12
Design 3.....	15
Design 4.....	17
Design 5.....	18
Design 6.....	20
Conclusion.....	22

EXECUTIVE SUMMARY

The city of Sullivan, IN has a neighborhood revitalization plan and requires new housing that will attract new homeowners to Sullivan. The IAD251 course offers Interior Architecture Design sophomores and juniors the opportunity to design their own unique home, so they were tasked with developing concepts and floor plans for Sullivan's empty lots. The course developed ten housing designs, and six are represented in this report.

INTRODUCTION

Sullivan, IN has empty lots, dilapidated lots, and other acquisitioned within the city limits that are prime locations for building new housing to bolster the community. The city identified a need for concepts of potential housing to solicit Request for Proposal's (RFPs) to build. Indiana State University has an experienced Interior Architecture Design program. The IAD 251 integrated the design project of individual home concepts.

IAD 251: Interior Design Studio 1 is a course for junior and sophomore undergraduates in the Interior Architecture Design program. This course integrates learning of all interior architecture design concepts and processes and ends with each student presenting an individually designed housing concept. Multiple assignments such as creating "clients", bubble designs, mockups, and more. All adding to the final presentation of

a floor plan, interior elevation, exterior elevation, and potential design plans for one housing concept.

The students enrolled in the course produced ten separate design concepts complete with floor plans and elevations. These were presented to the city of Sullivan for them to use as potential concepts to solicit RFPs.

HOUSING DESIGN OVERVIEW

Ten IAD251 students were tasked with designing housing concepts that could be realistically built in Sullivan, IN. They were presented with general information and history about Sullivan and its community, and then they were asked to innovate. The students presented final designs to the city of Sullivan with floor plans, interior elevations, exterior elevations, and materials and finishing ideas.

Six designs are represented in this report, as these were identified as the best of the presented designs. All six designs include the required elevations and floor plans.

DESIGN 1

The first design is a one-story craftsman-style house. The student designed with a family in mind and for aging-in. The home has an open concept that invites openness and strategic privacy in some areas. The following plan includes a floor plan, north and south elevation, half bath elevation, kitchen elevation, and rendered perspectives.

The one level floor plan offers a front entrance that leads into an open concept living room and kitchen. There is a back door that leads to a back deck. The left side of the floor plan offers seclusion and privacy for the bedroom spaces. To the left of the entrance

is a hallway that leads to two bedrooms, one full bath, and one half-bath. The most interesting aspect to this design is a closet washer-dryer unit space. The master bedroom space is off the side of the kitchen.

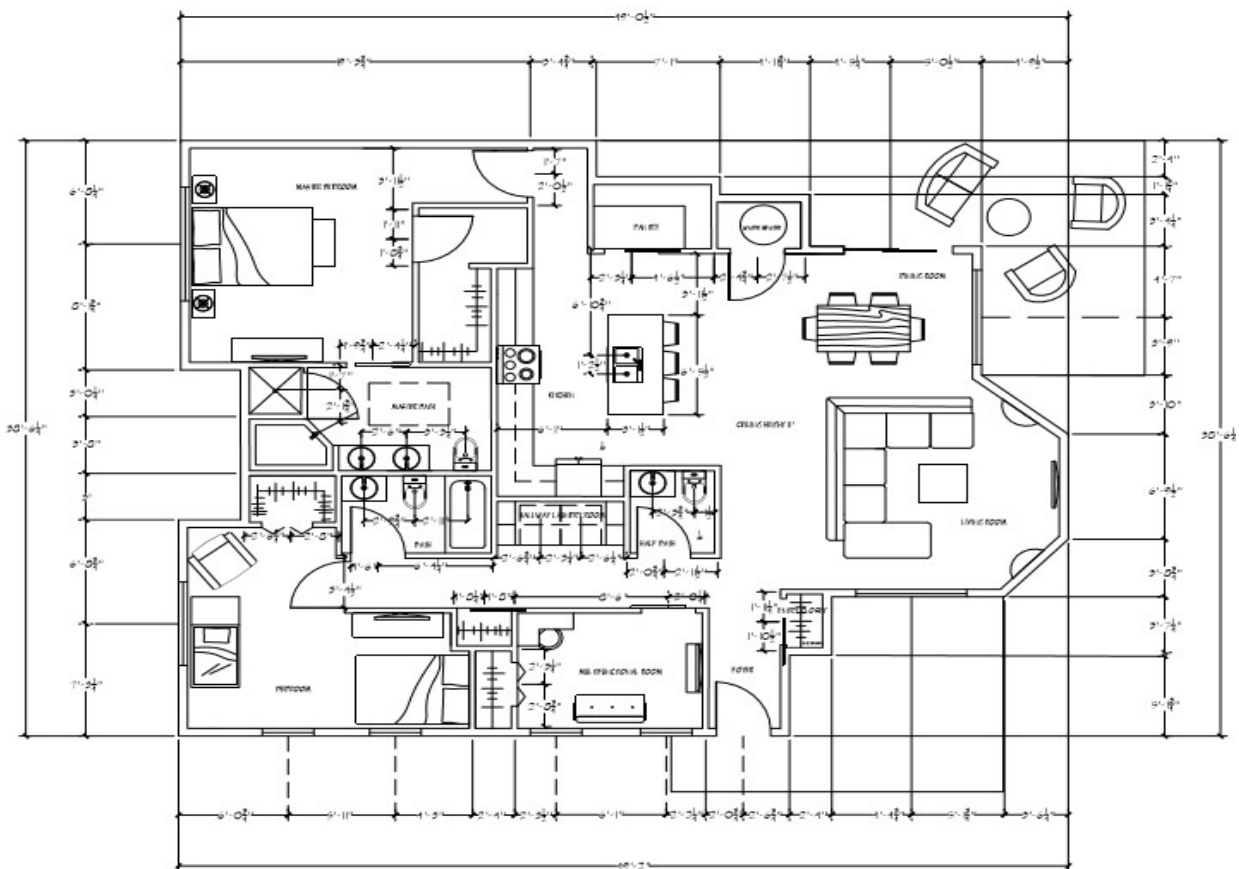


Figure 1. Design one floor plan.



Figure 2. Design one exterior elevations.

The exterior elevations illustrate the single roof structure with shingling. There are columns with stone bases and a car port instead of a garage space.

DESIGN 2

The second design is a two-story bungalow and craftsman style house. The student designed this house to help attract any family looking to live and thrive within the city of Sullivan. There is a heavy use of natural elements that appeal to younger families and the design is purposeful for a family that will host a lot of people in their home. The following plan includes a site plan, bubble diagram, two-level floor plan, interior elevation, exterior elevation, and multiple interior perspectives.

The first floor offers a front porch entrance with a double door entryway. This opens directly to the living room and kitchen space in an extremely open concept. There is a

tucked hallway leading to the master bedroom and bathroom. There is also a mudroom entrance and second entrance to the back deck.

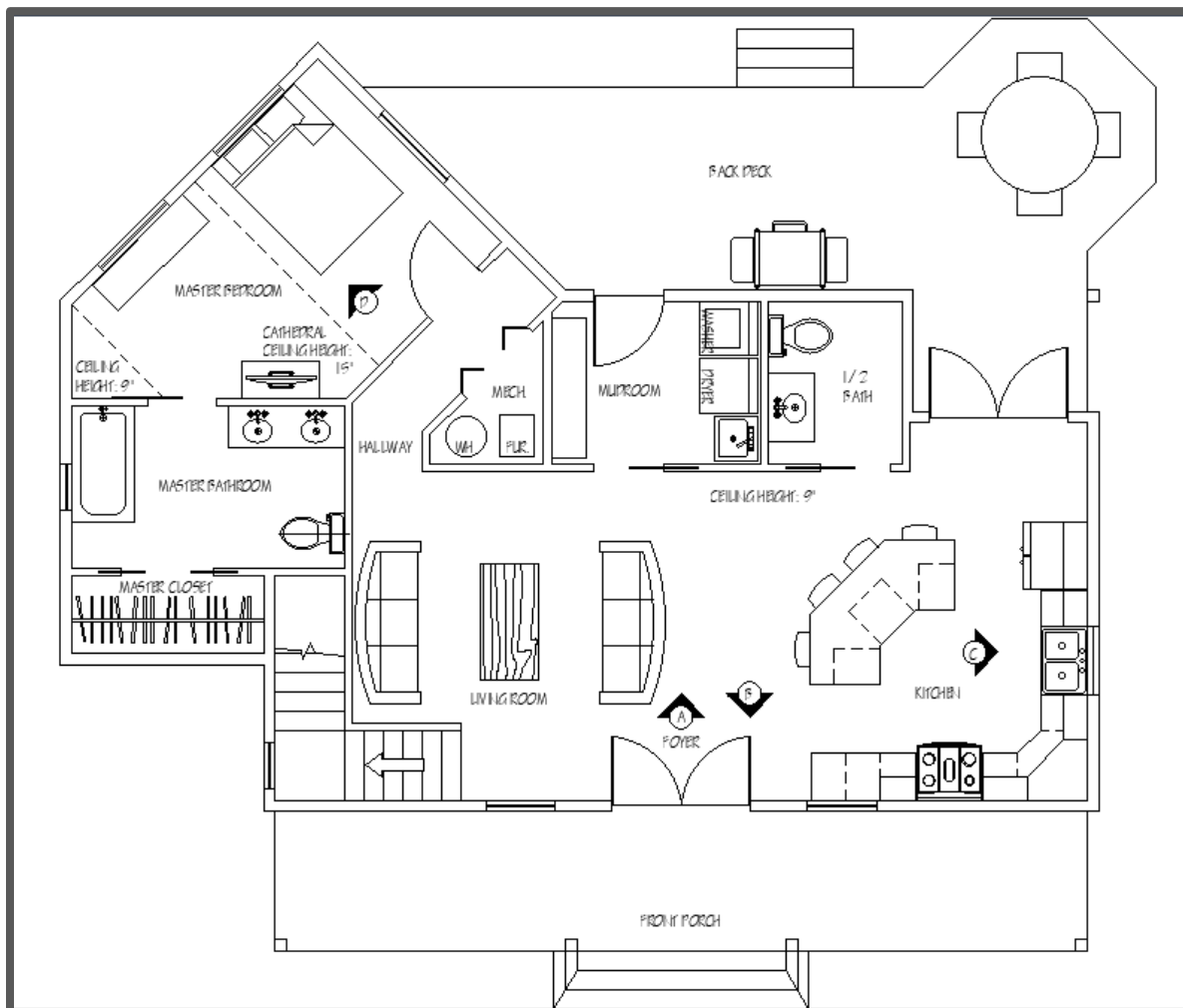


Figure 3. Design two floor plan.

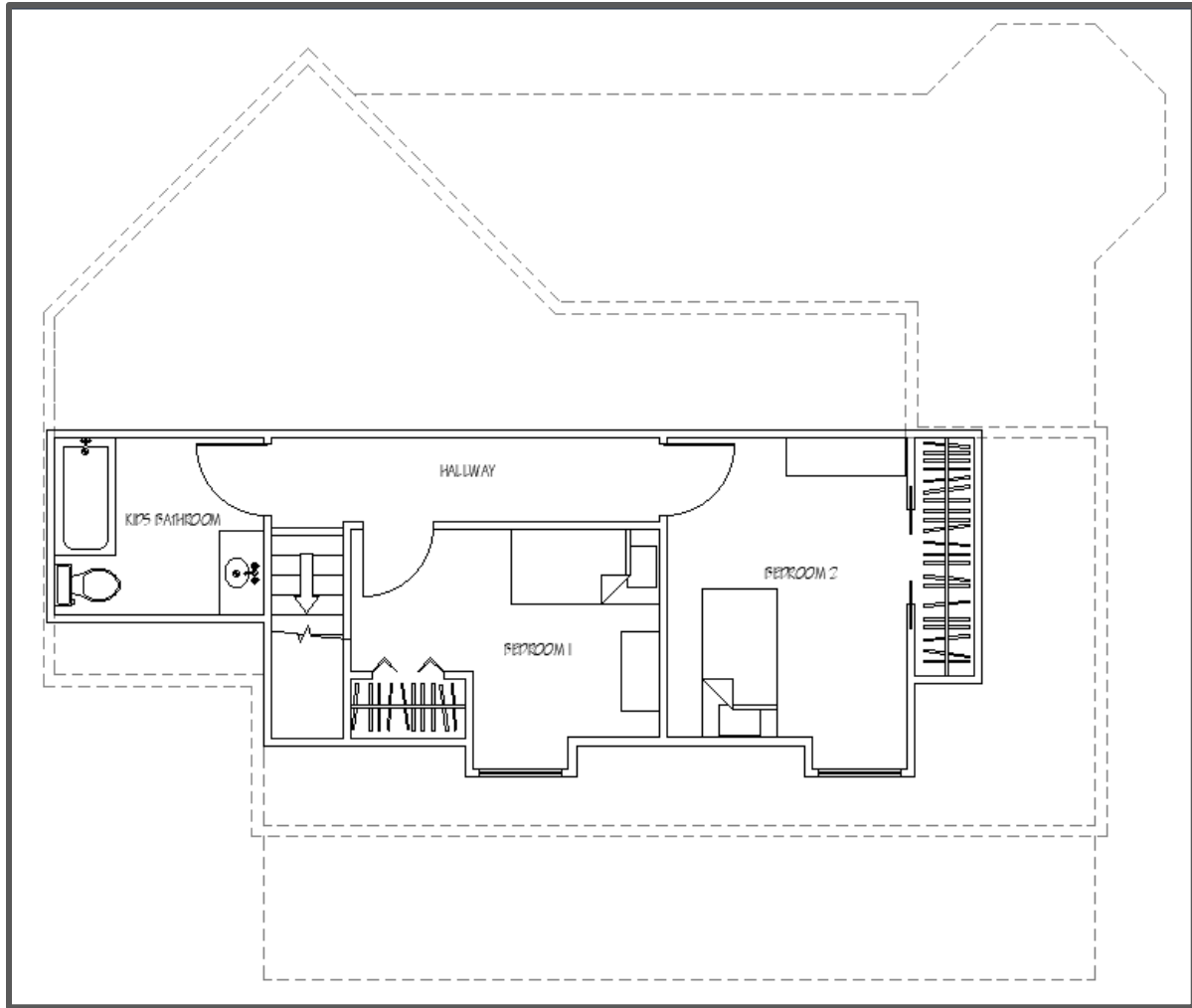


Figure 4. Design two floor plan two.

The second level floor plan is about half the space of the first floor. It has two bedrooms and one full bathroom. This flows with the entire house plan after seeing the roof plan.

The roofing plan indicates converging over the second floor bedrooms with window pop-outs.



Figure 5. Design two house rendering.



Figure 6. Design two exterior elevations.

DESIGN 3

The third design is a one-story bungalow style house. The student designed a semi-open concept with a family in mind for the plan. The spacing and placement of rooms is purposeful for the family. The following plan includes a floor plan, exterior elevations, interior elevations, and interior perspectives.

The plan is for an entryway directly into the open living room space and there's a slight break up in openness with a hallway before the kitchen and dining space. However, the

master bedroom and other two-bedroom spaces are broken apart from the two sides of the house intentionally. That way children do not disrupt the parents.

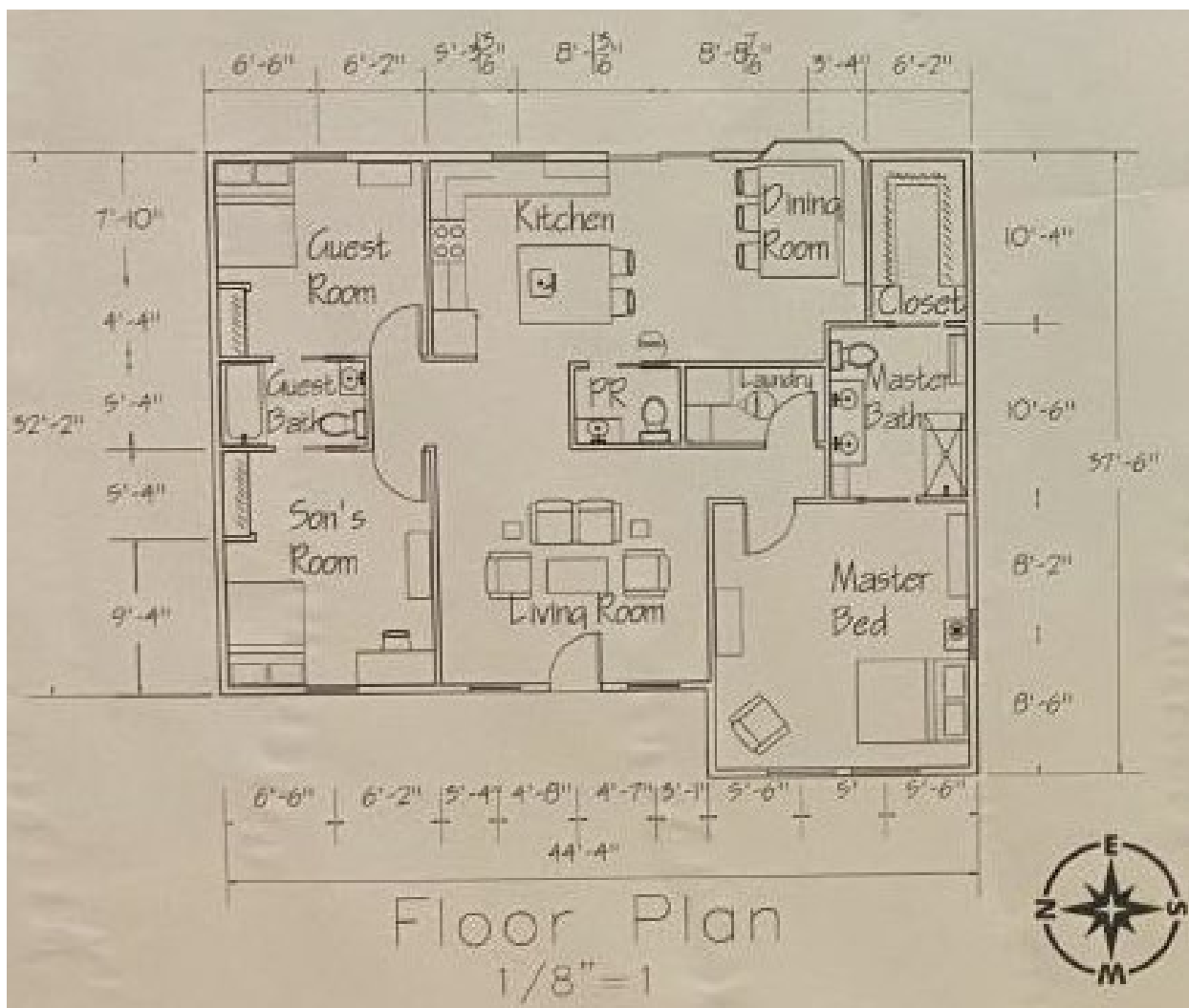


Figure 7. Design three floor plan.

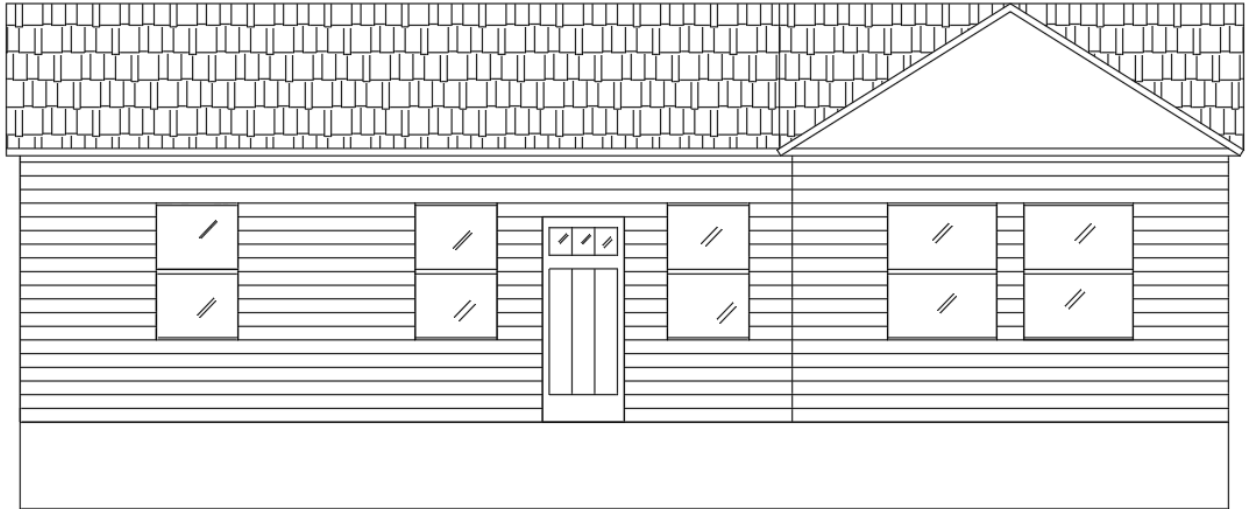


Figure 8. Design three exterior elevation.

The exterior elevation indicates the simple roofing structure with a pop-out wall and roof component. The vinyl siding and slate roofing is uniform design with some of the housing in the area.

DESIGN 4

The fourth design is a 1,286 square foot house with a farmhouse look and Victorian style elements. The student designed a linearly organized home with a centralized hallway and public area. The home is a modernized upgrade to the other homes around it. The farmhouse style blends with colonial elements to create a quiet atmosphere. The following plan includes a floor plan, exterior elevations, interior elevations, and interior perspectives.

The entry way opens to a foyer with the kitchen and dining room to the right. This space is pretty open as there's a family/living space as well. Then the hallway space leads

to the rooms with privacy. There is dark wooden beams along the ceiling that warm the light space.

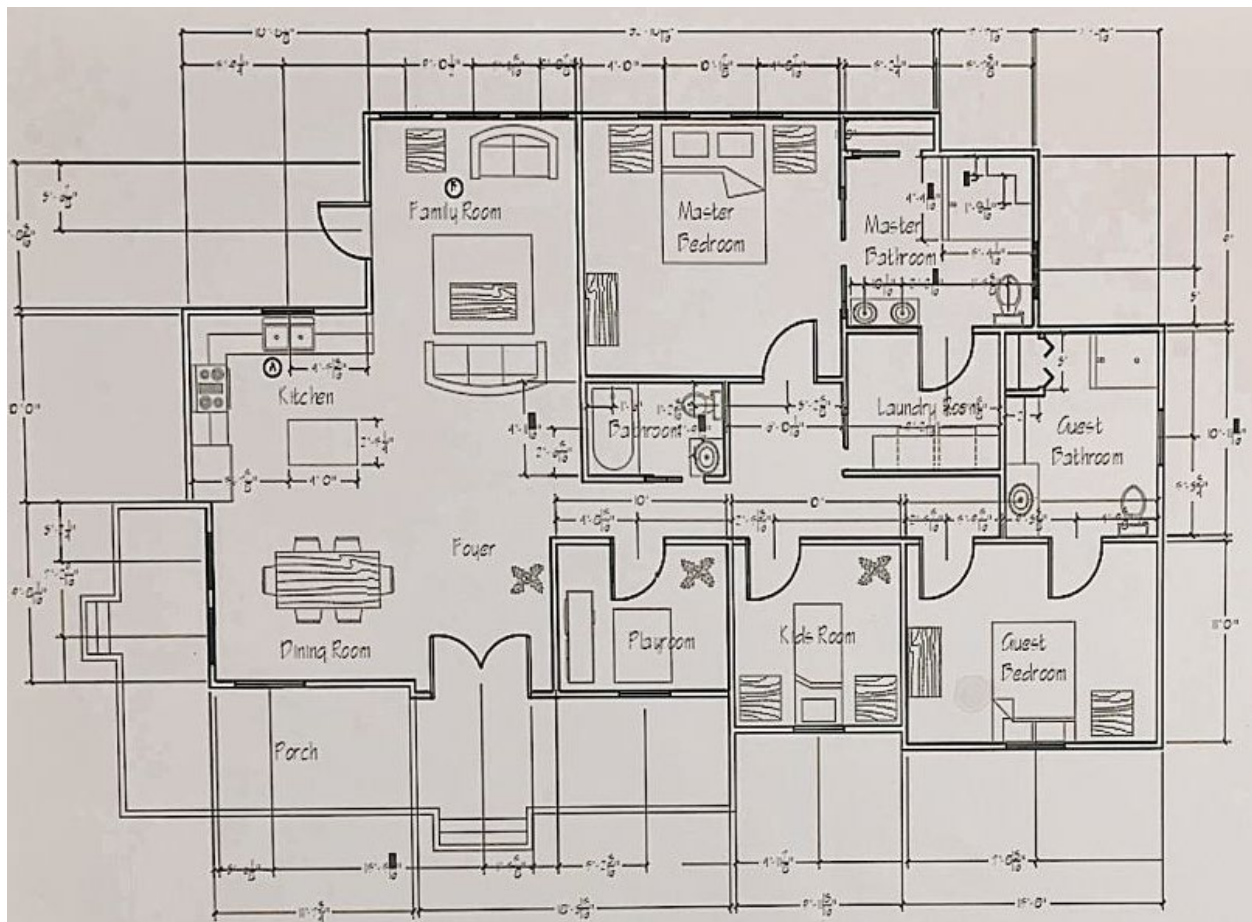


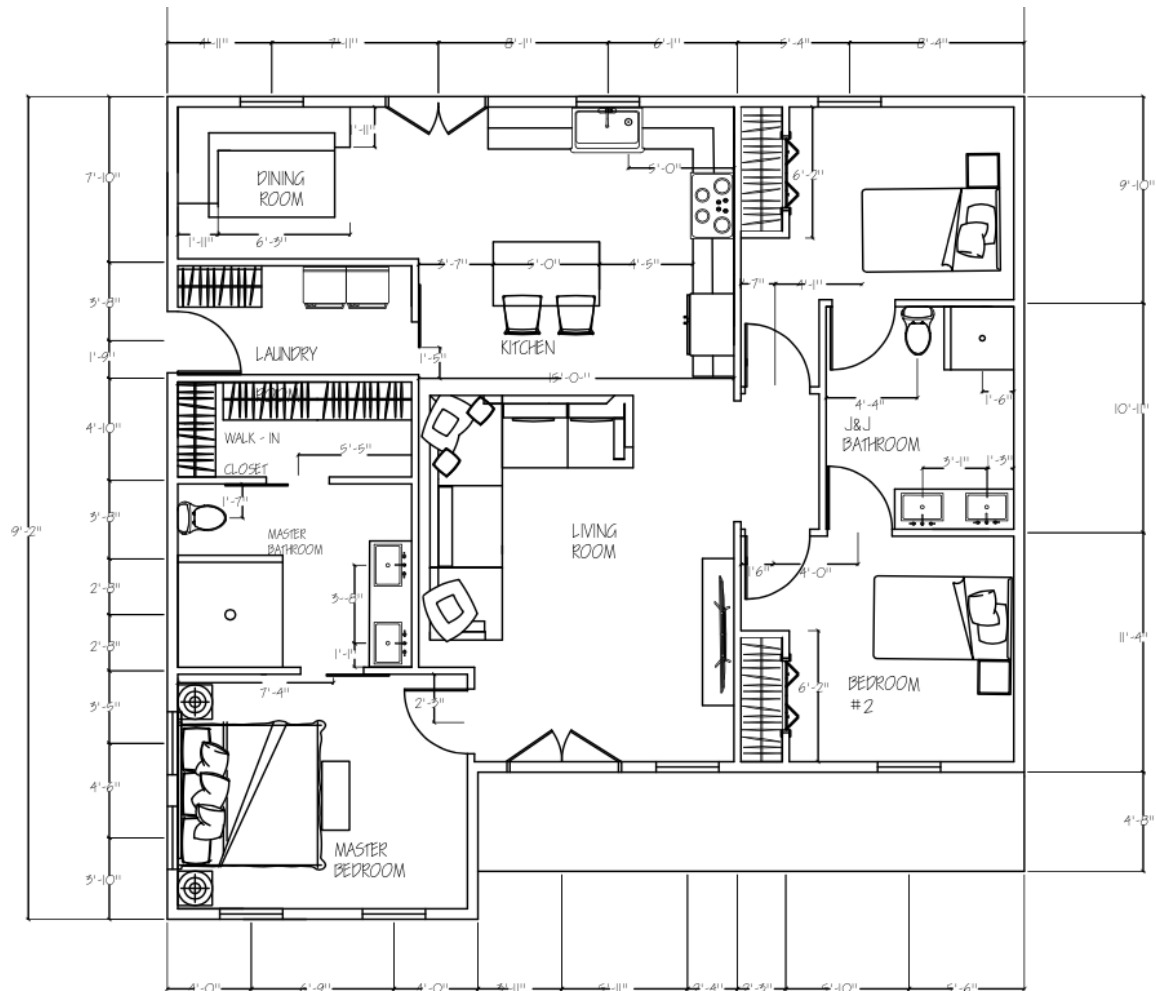
Figure 9. Design four floor plan.

DESIGN 5

The fifth design is a one story house designed with a family in mind. The student designed a home with private living areas and a farmhouse style. The home marries together rustic and modern style for the farmhouse that will stand out while still fitting in with the neighborhoods in Sullivan. The following plan includes a floor plan, exterior elevations, interior elevations, and interior perspectives.

The floor plan opens with a front porch and a double door entryway to the living room. This home is more secluded with a closed off

kitchen and dining area and separate bedrooms on each side of the house.



FLOOR PLAN SCALE - SCALE: 1/4" = 1'0"

Figure 10. Design five floor plan.

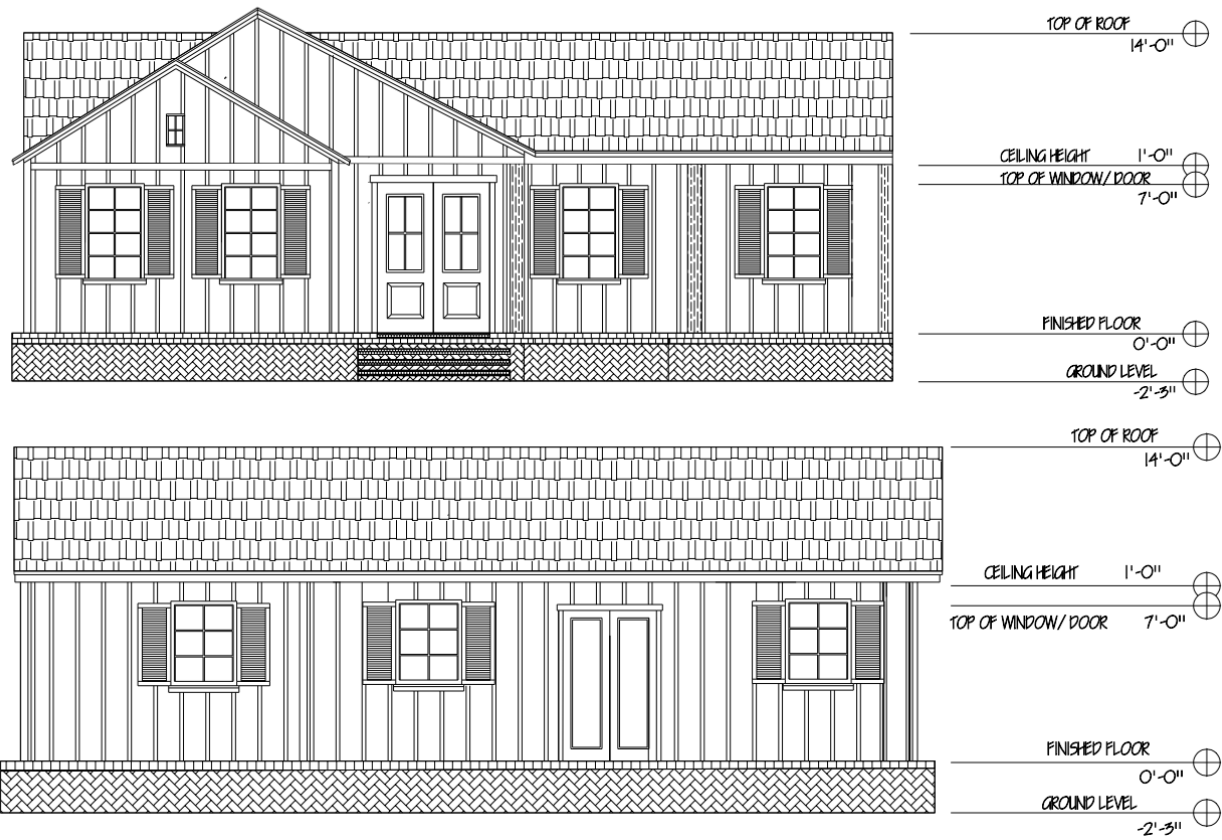


Figure 11. Design five exterior elevations

DESIGN 6

The sixth design is a two-story house designed with an aging couple with grown children. The home is also attractive for any potential homeowner. The student designed a home with accessible and open living spaces on the first floor and private areas on the second floor. The following plan includes a floor plan, exterior elevations, interior elevations, and interior perspectives.

The floor plan indicates a full front porch at the front of the house and a single door entryway to a small foyer area. This leads to the open space of the kitchen, dining room, and living room. There's also a half-bath and

an office area. The floor plan also indicates the second floor that contains a master bedroom, guest bedroom, bathroom, and laundry. There also is a back deck included in the floor plan.

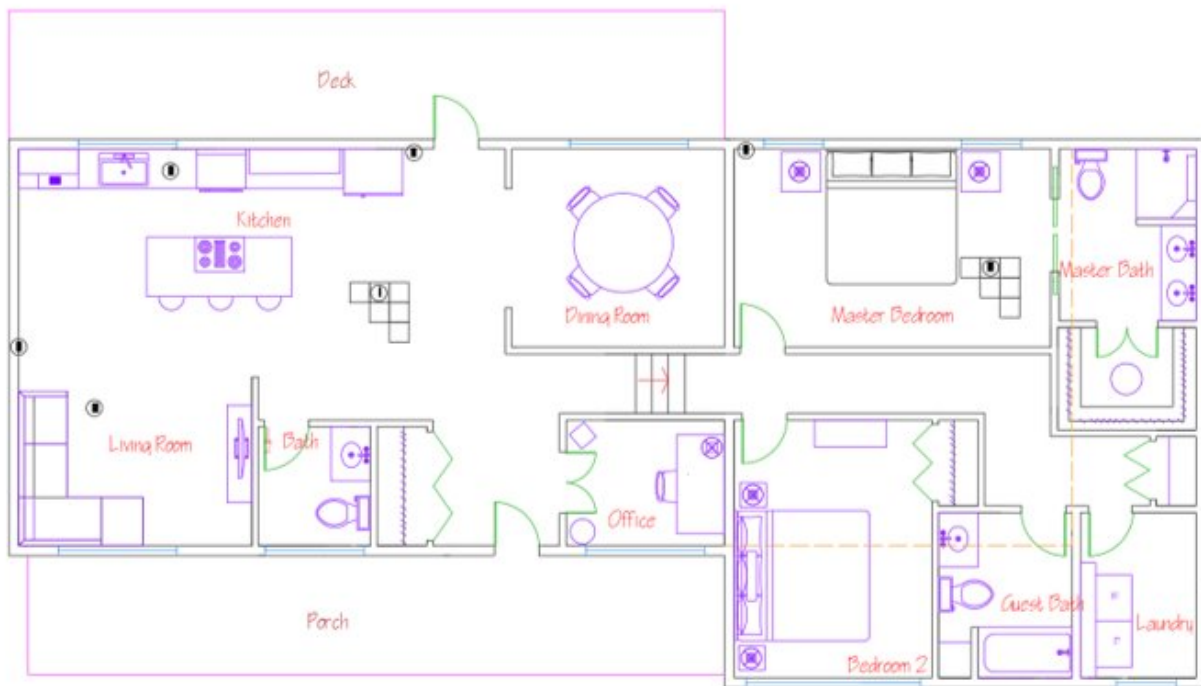


Figure 12. Design six floor plan.

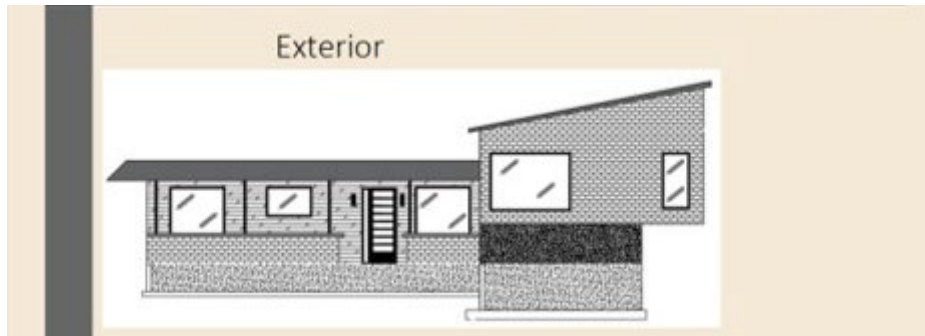


Figure 13. Design six exterior elevation.

The exterior elevation illustrates the unique roofing structure designed by the student. It's slanted inward, whereas typical designs

might have it slanted outward. This is intended to make it stand out from the neighboring homes.

CONCLUSION

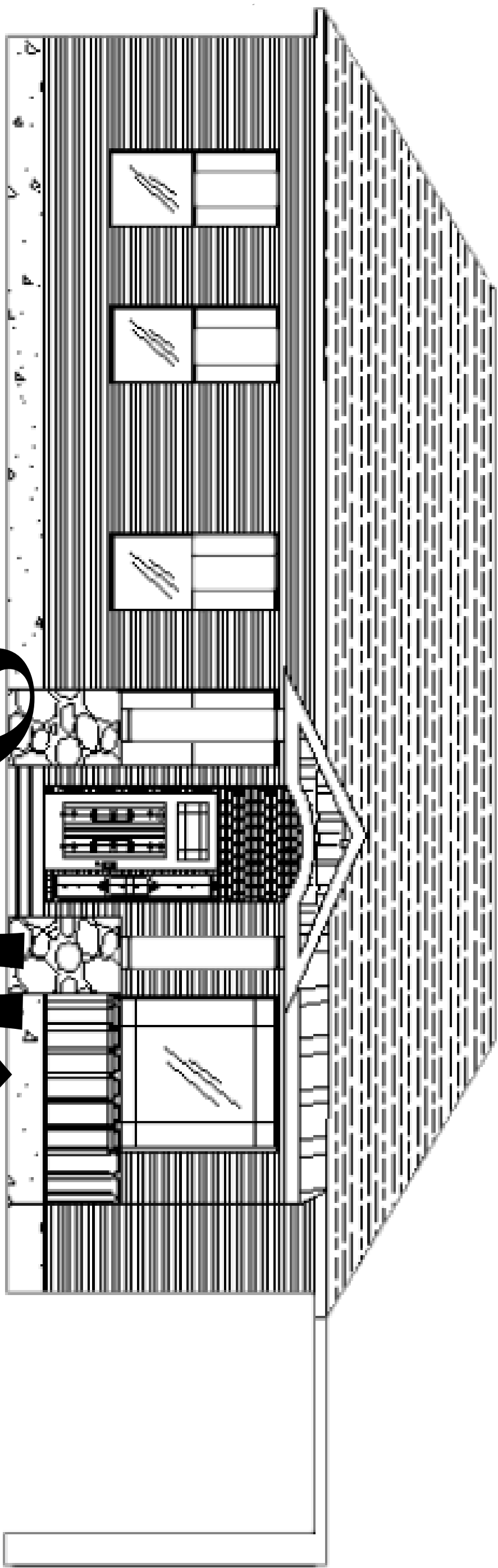
Sullivan, IN identified housing as a priority moving into the coming years and tasked the students with designing housing concepts that could be used for potential RFP's. Each individual student designed their own concept and there were six unique designs that stood apart.

The following themes were present in all housing designs:

1. Families were a primary focus for most, if not all, of the student designs which indicates the population present in Sullivan
2. Designs that have unique touches but still fit into the existing neighborhoods, because that is more likely to attract families

APPENDIX A.

Student presentation boards.



Sullivan House

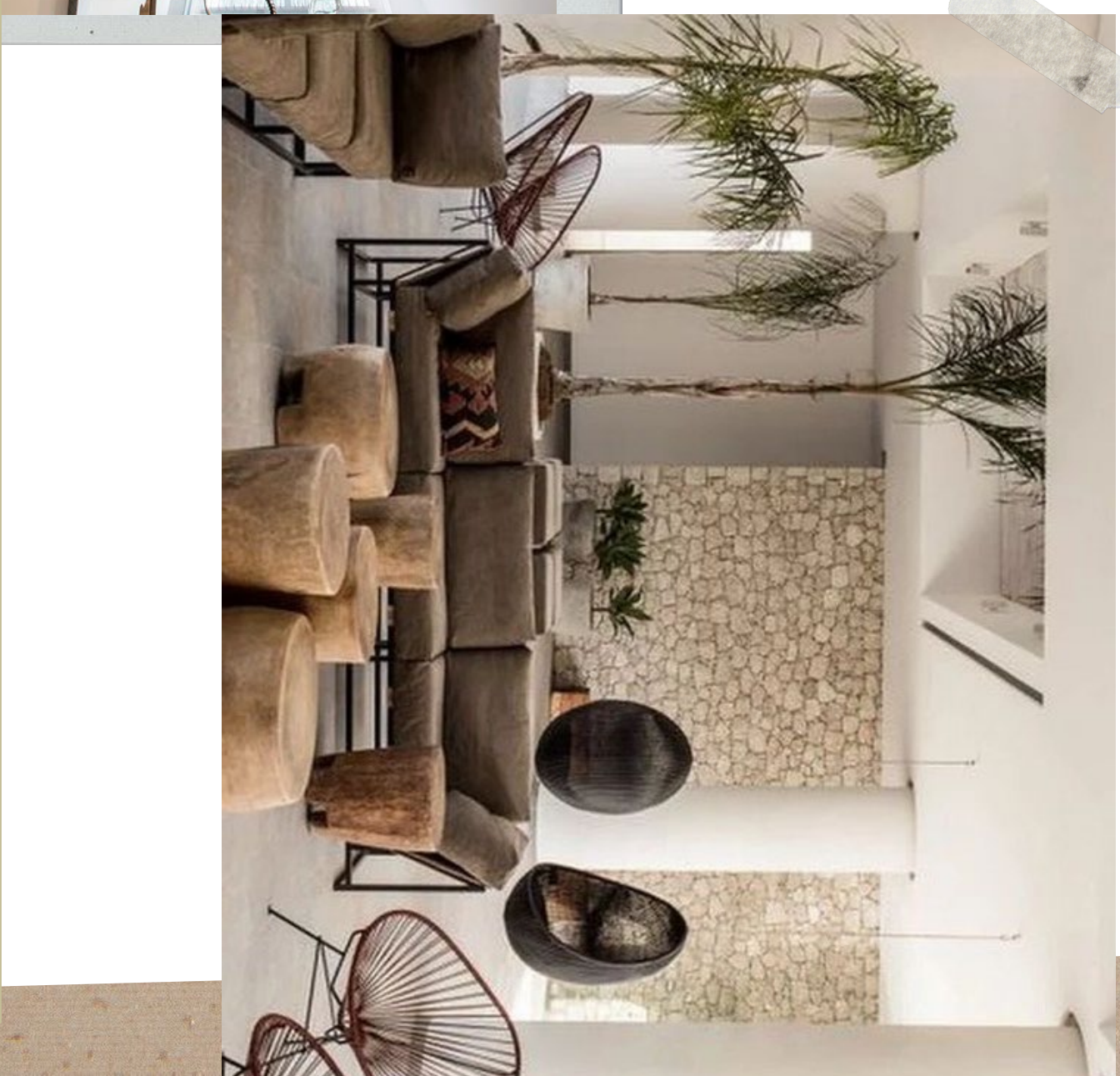
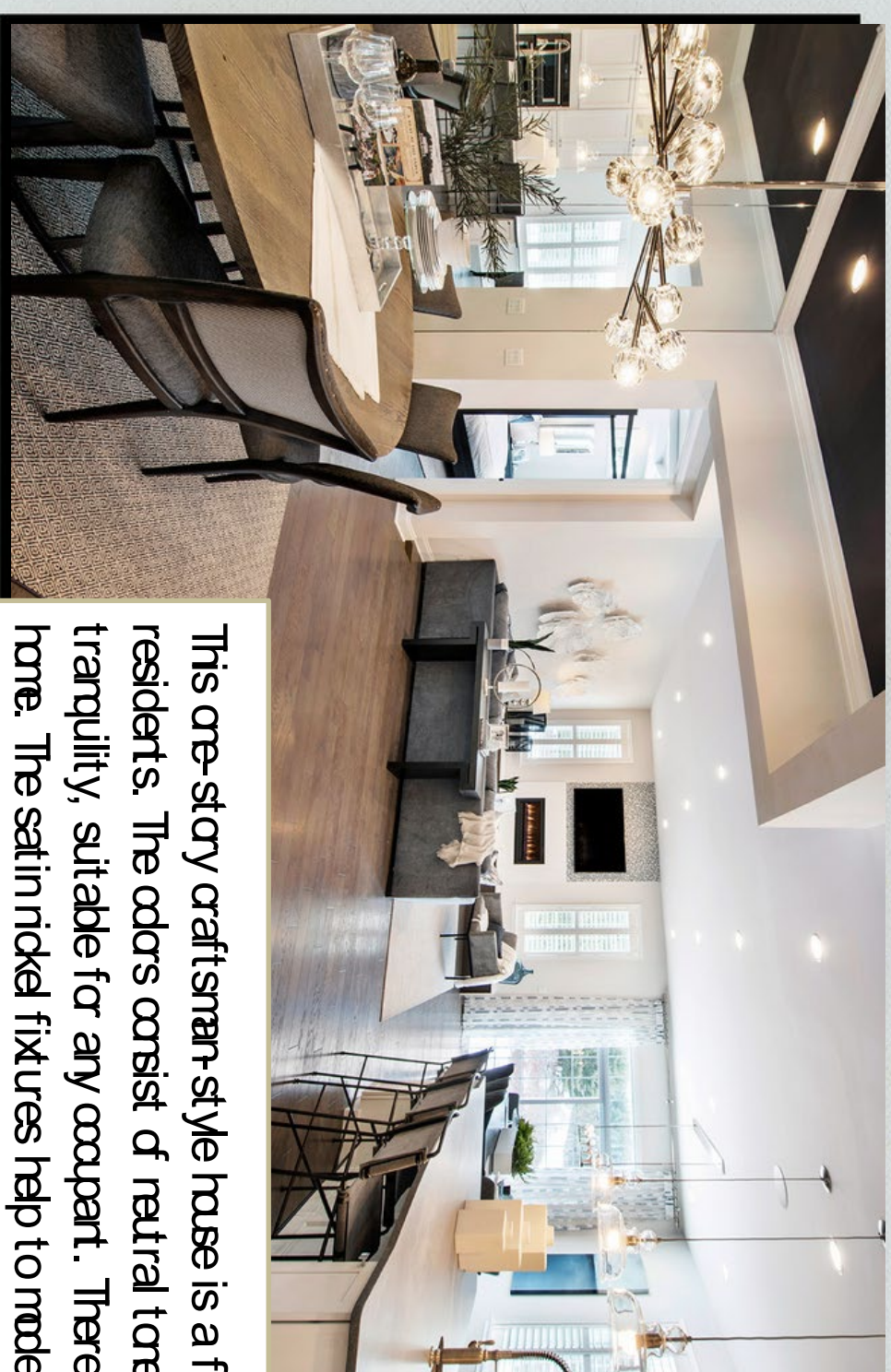
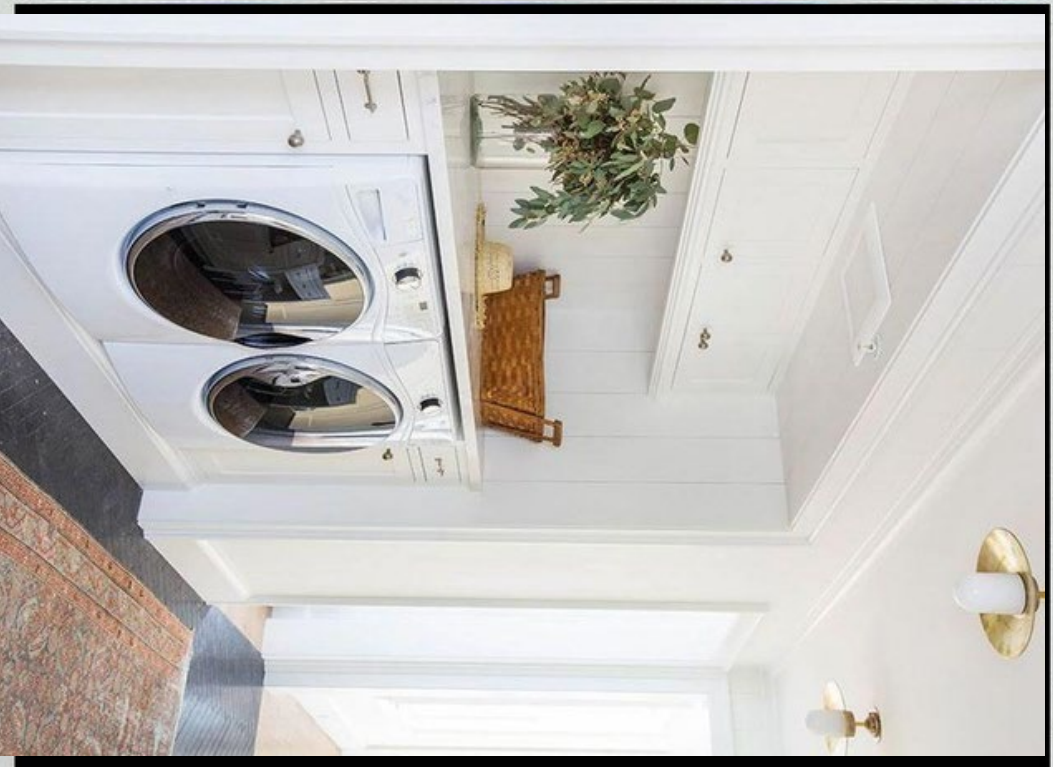
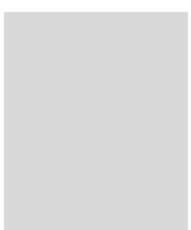
TASHANAY TURNER MCBEE

IAD 251002

FALL 2020

INSPIRATION

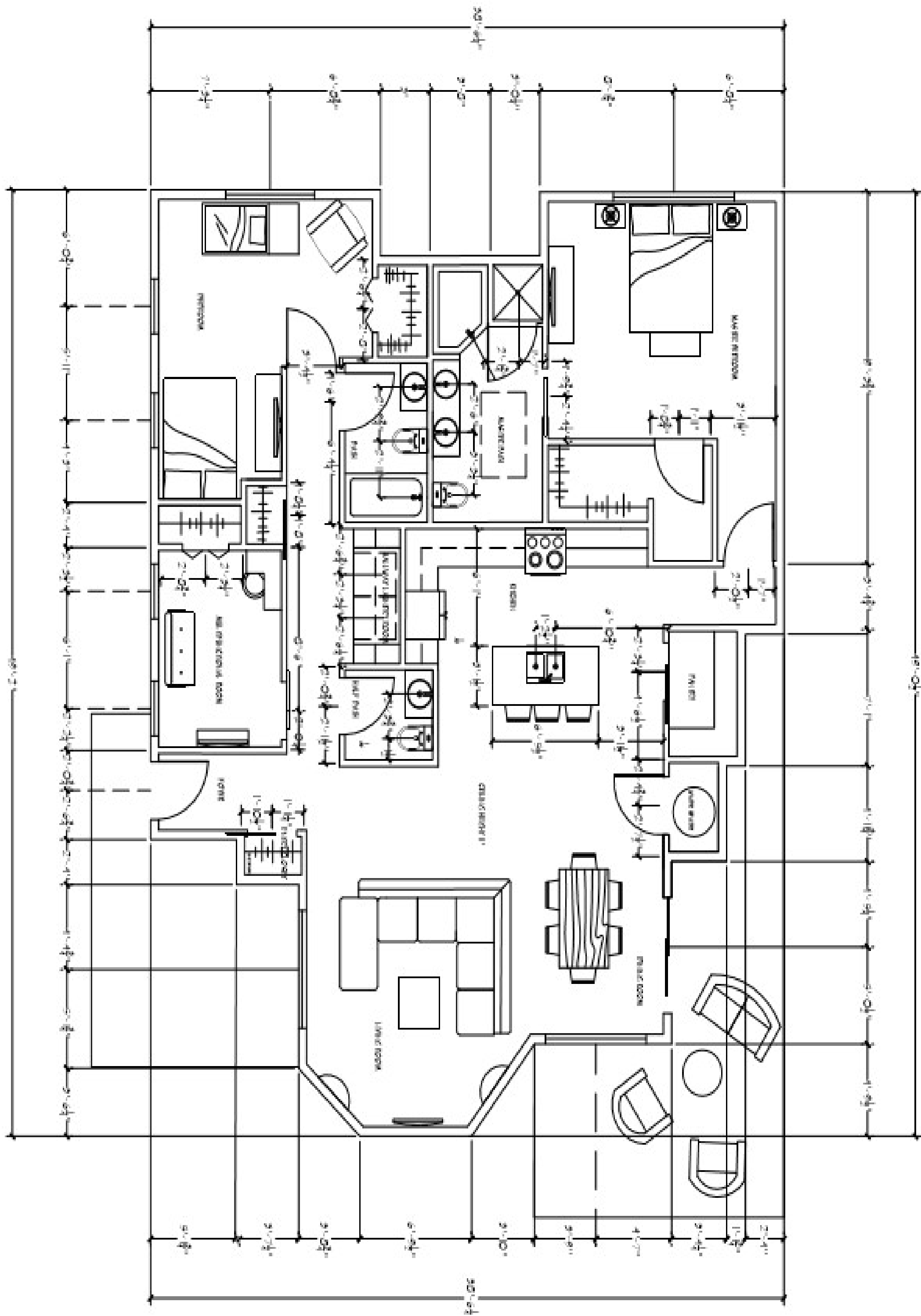
color palette



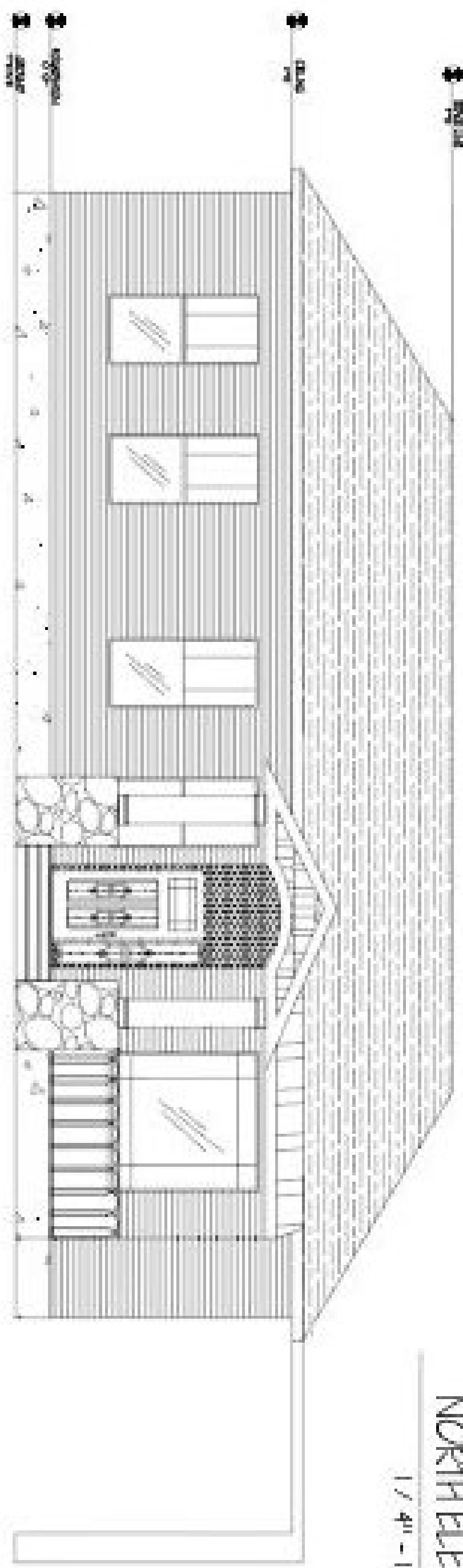
SULLIVAN PROJECT
TASHANAY TURNER MCBEE

IAD 251-0027 FALL 2020

This one-story craftsman-style house is a functional, radial symmetrical design for family-oriented residents. The colors consist of neutral tones to alleviate an atmosphere of relaxation and tranquility, suitable for any occupant. There are pattern and pastel colors to bring vibrancy to the home. The satin nickel fixtures help to modernize the occupancy. A combination of carpet and hard flooring influences the opportunity for minimal cleaning and coziness within the residency. Overall the home's open concept invites occupants into one space or the other to bring unity and openness along with hallways for a sense of privacy.



1 / 4" = 1' 0"

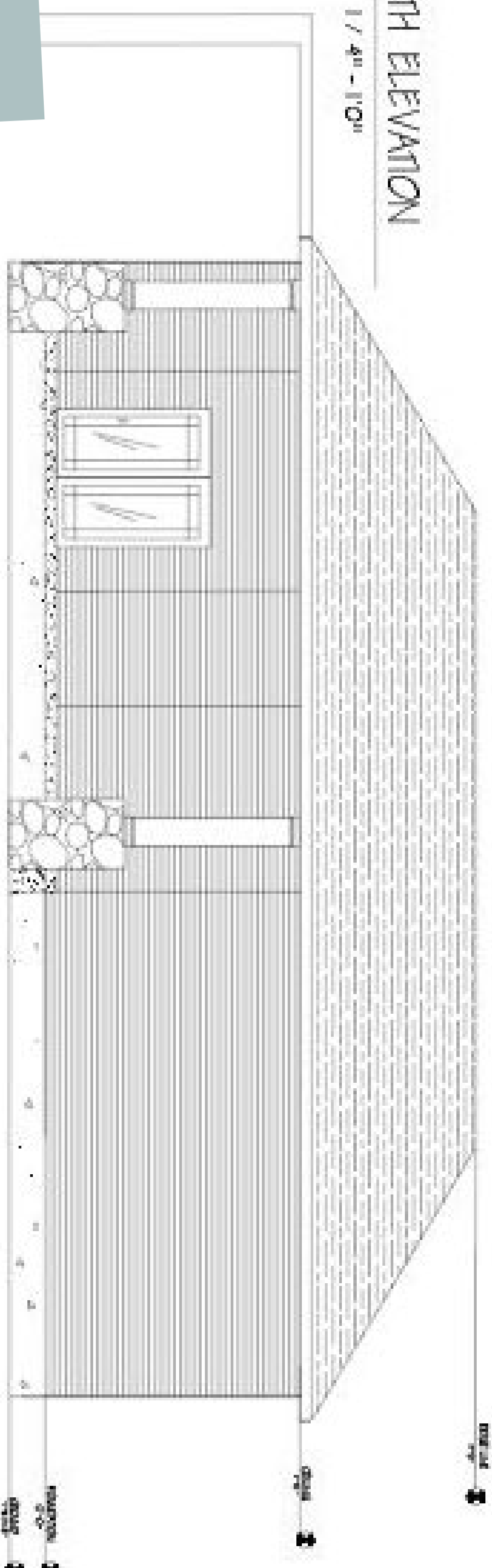


NORTH ELEVATION

1 / 4" = 1' 0"

SOUTH ELEVATION

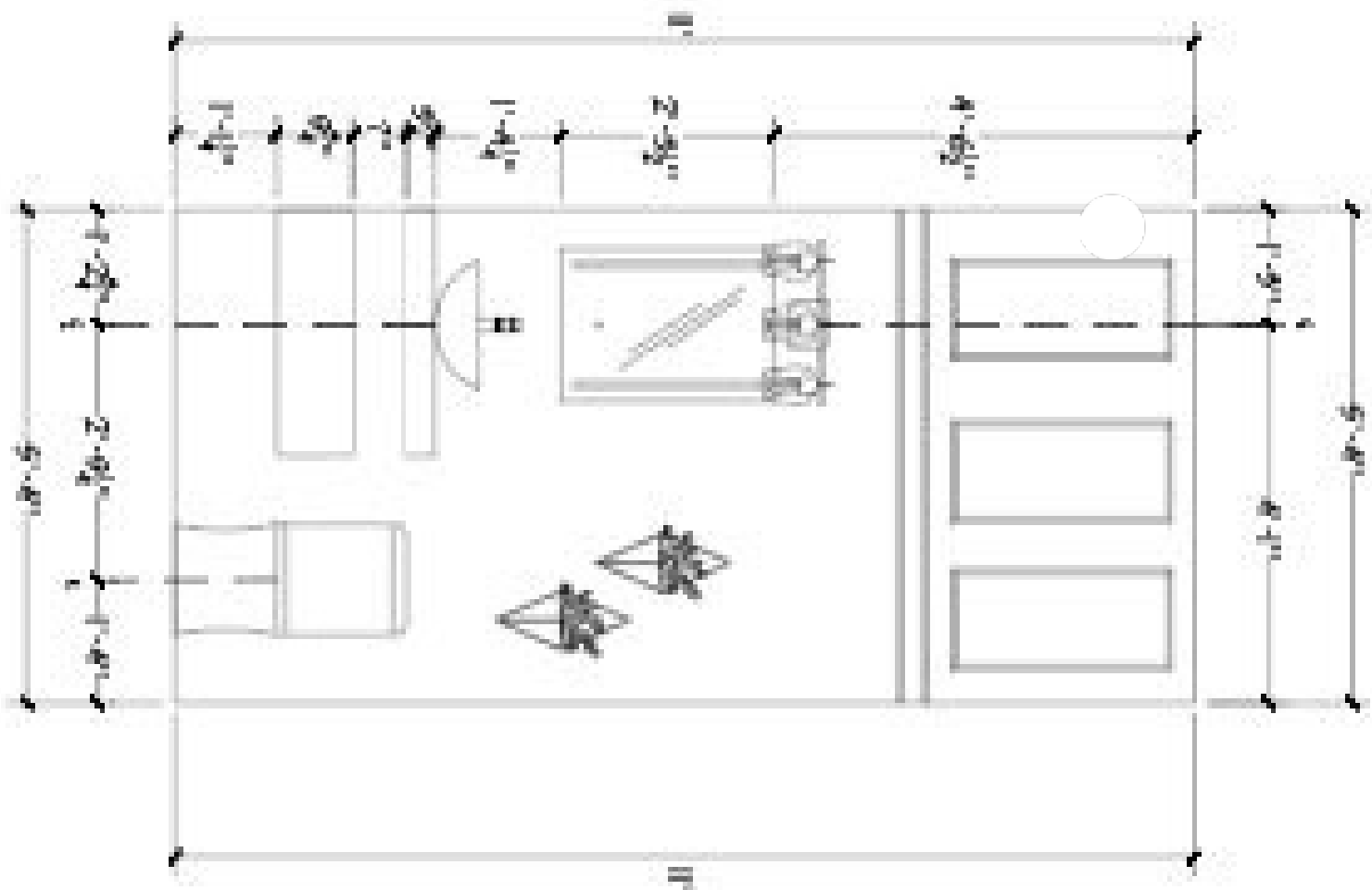
1 / 4" = 1' 0"



SULLIVAN PROJECT

TASHANAY TURNER MCBEE

IAD 251-0027 / FALL 2020



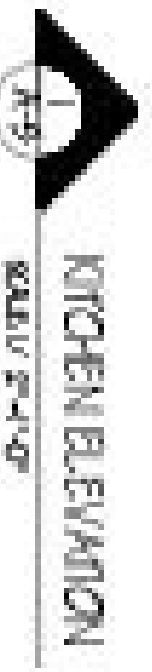
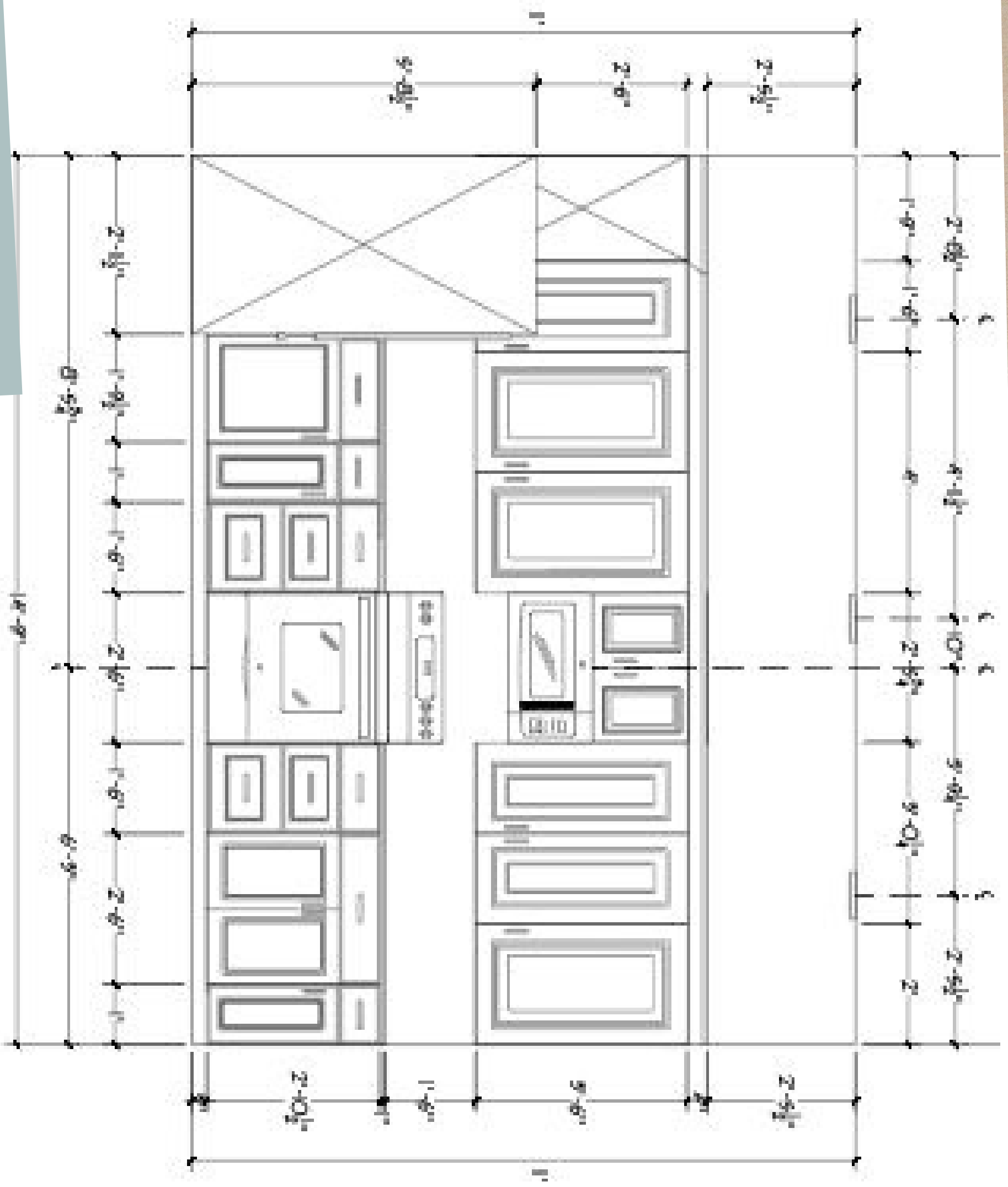
2 HALF BATH ELEVATION
1 / 2" = 10'

SULLIVAN PROJECT

TASHANAY TURNER MCBEE

IAD 251-0027 FALL 2020

SULLIVAN PROJECT
 TASHANAY TURNER MCBEE
 IAD 251-002 / FALL 2020



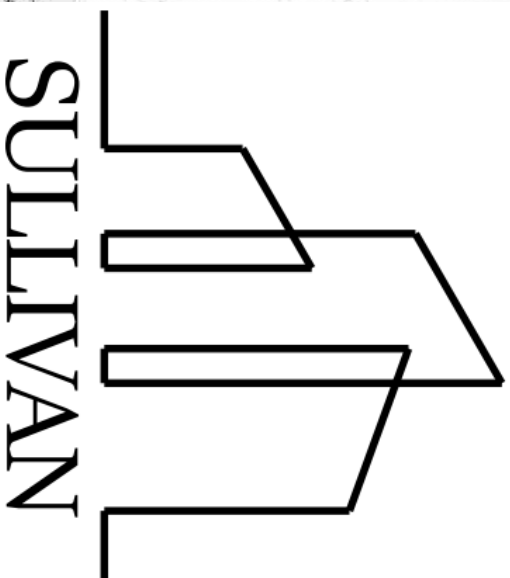
RENDERED PERSPECTIVES



SULLIVAN PROJECT

TASHANAY TURNER MCBEE

IAD 251-0027 / FALL 2020



SULLIVAN
RESIDENTIAL DESIGN

MADISON HAGEDORN

Sullivan is a town that has been in existence for over a century. Positioning itself for growth in the near future, this home would help attract any family looking to live & thrive within the city.

This cozy 1 ½ story house combines aspects of the bungalow and craftsman style to create a warm and inviting feeling as you enter.

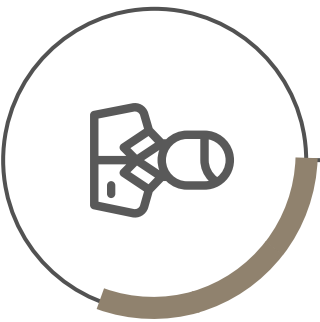
The use of natural elements – particularly wood and stone – comfortable furniture, and decorative moldings will appeal to any young family looking to move to Sullivan. The large front porch serves as an inviting message to the community: inviting people inside, while also looking forward to the growth potential of Sullivan. The large open living and kitchen space serve as a place to gather together with friends and family. This house will fit right into the Sullivan community, and for the right family, their forever home.

CONCEPT STATEMENT



IDEAL HOMEOWNERS

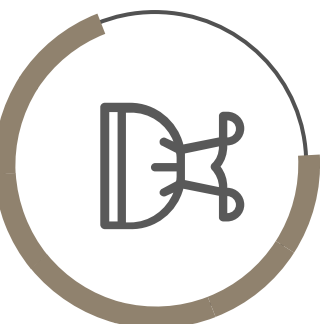
DAD



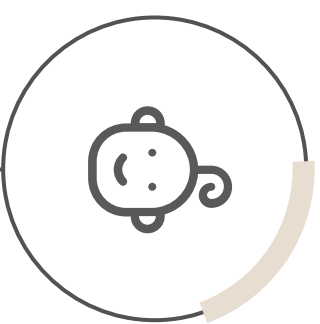
MOM



LITTLE GIRL

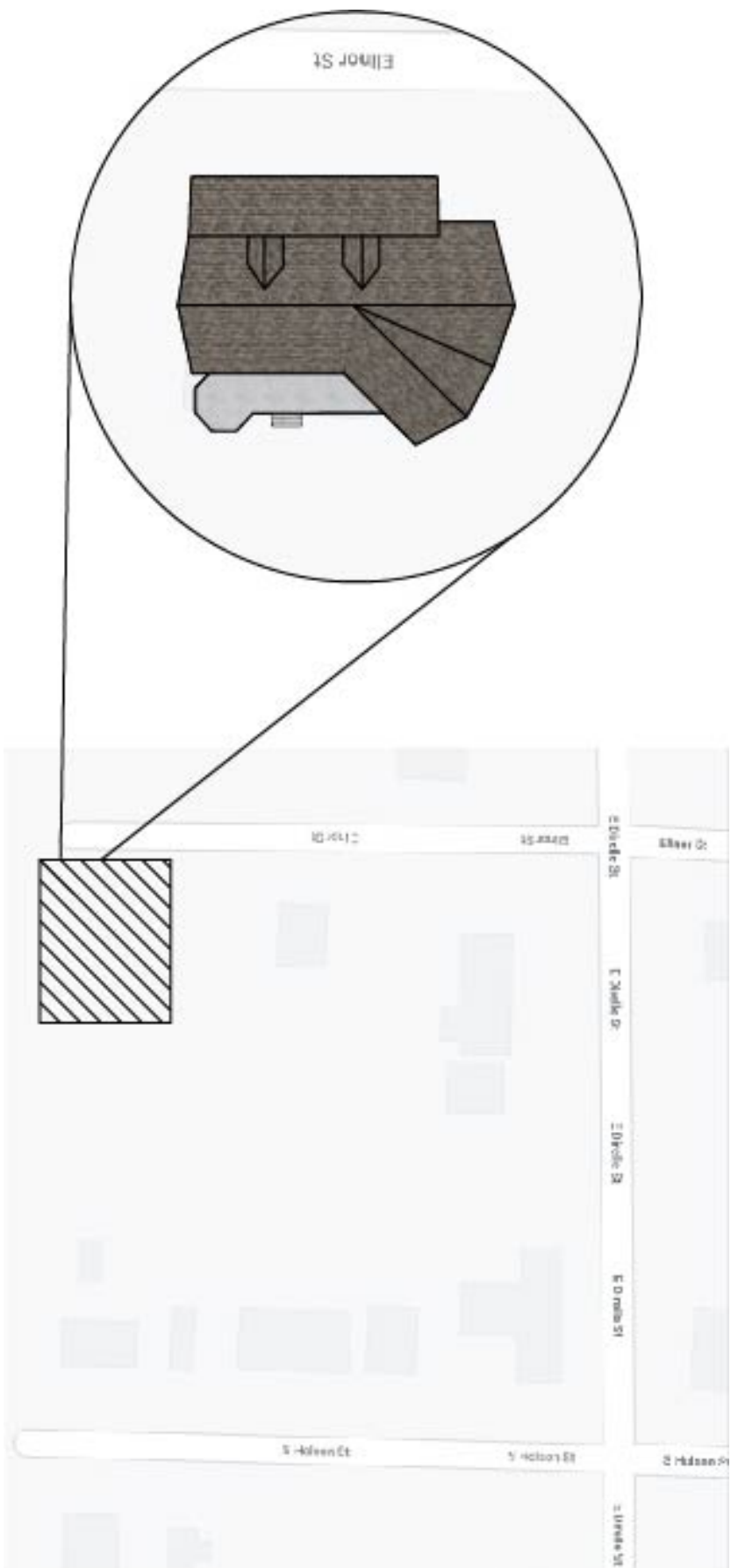


BABYBOY

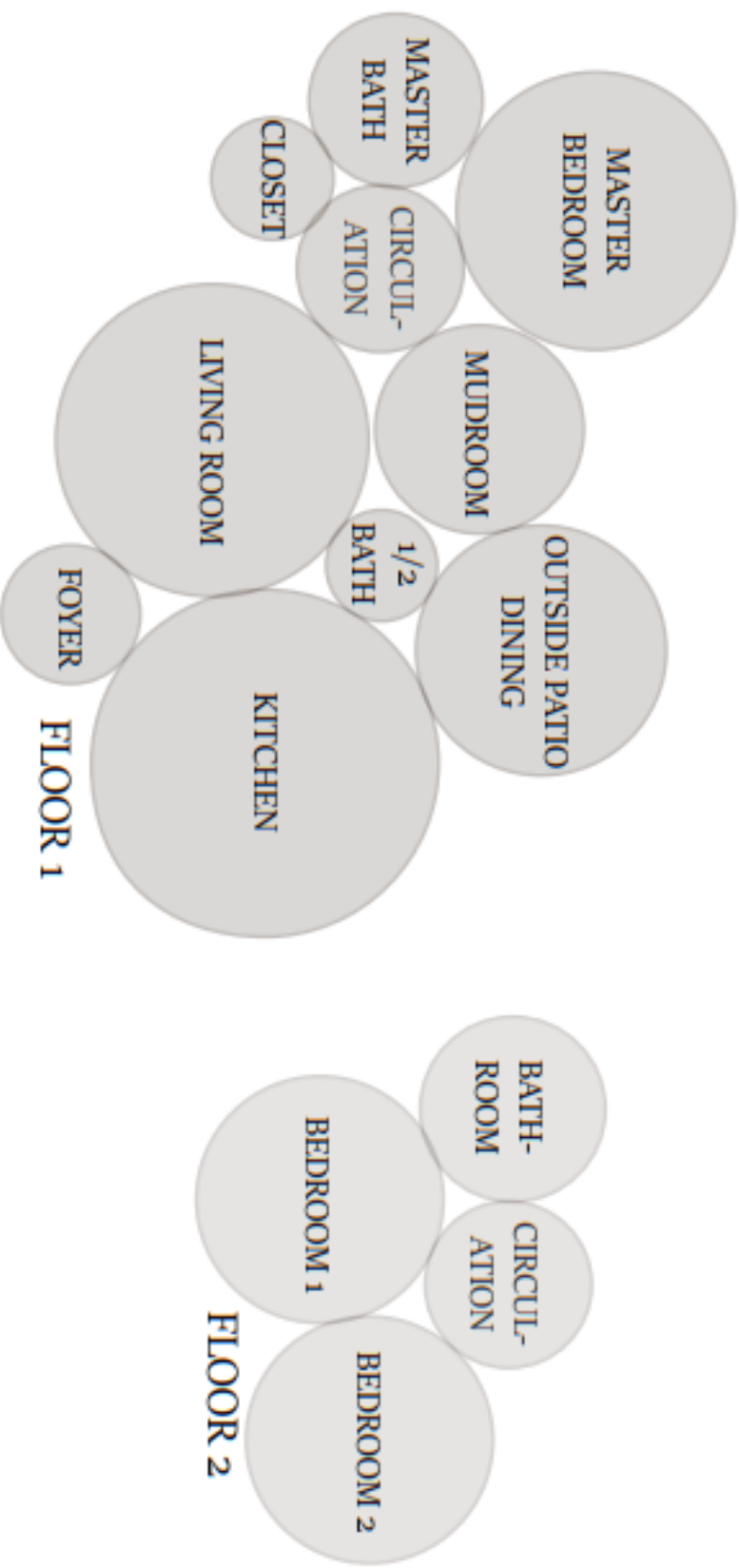


SITE PLAN

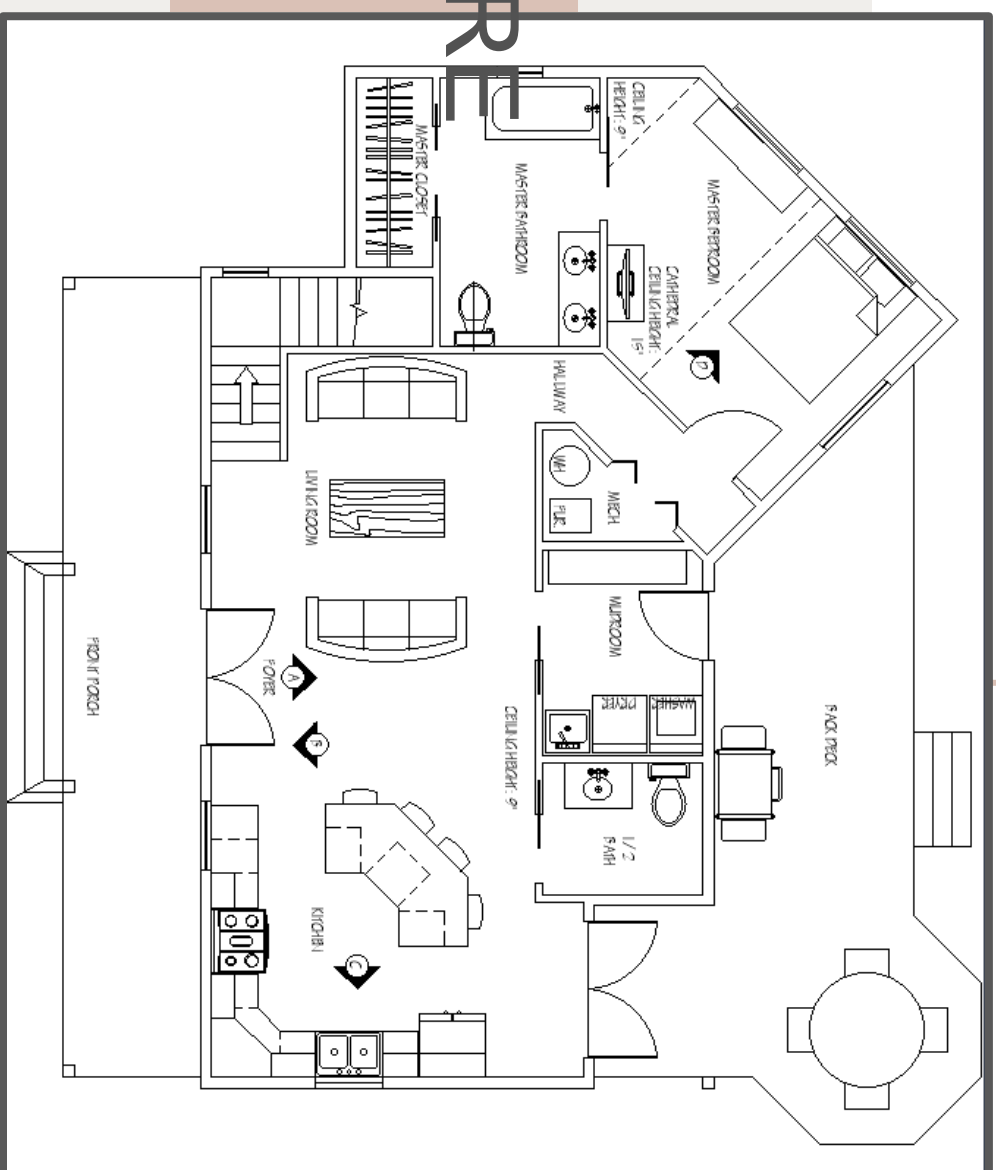
437 S Elinor Street



BUBBLE DIAGRAM

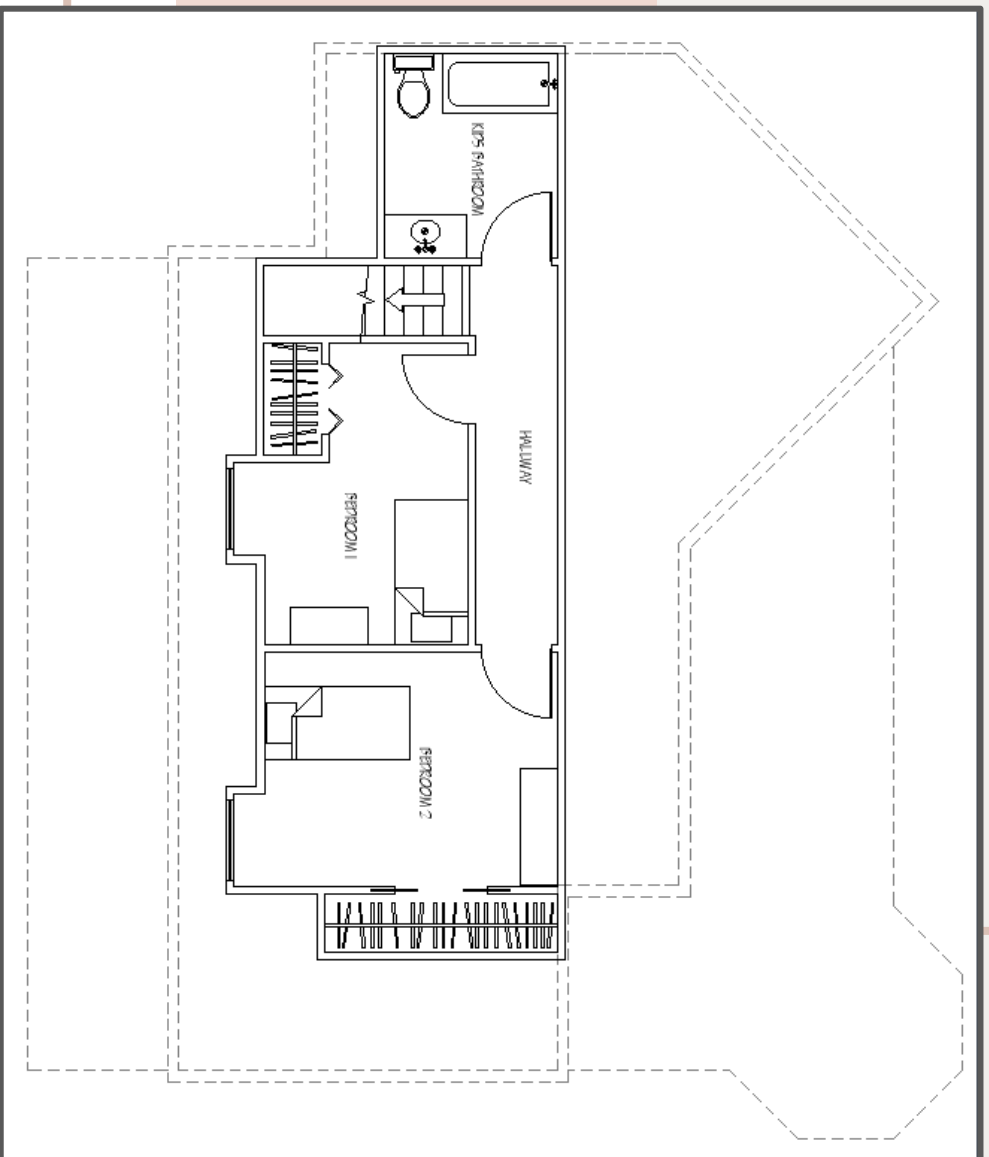


FURNITURE FLOOR PLAN LEVEL 1



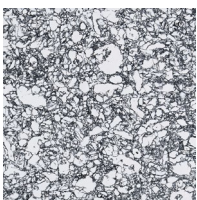
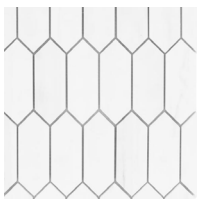
950 SQ. FT.

FURNITURE FLOOR PLAN LEVEL 2

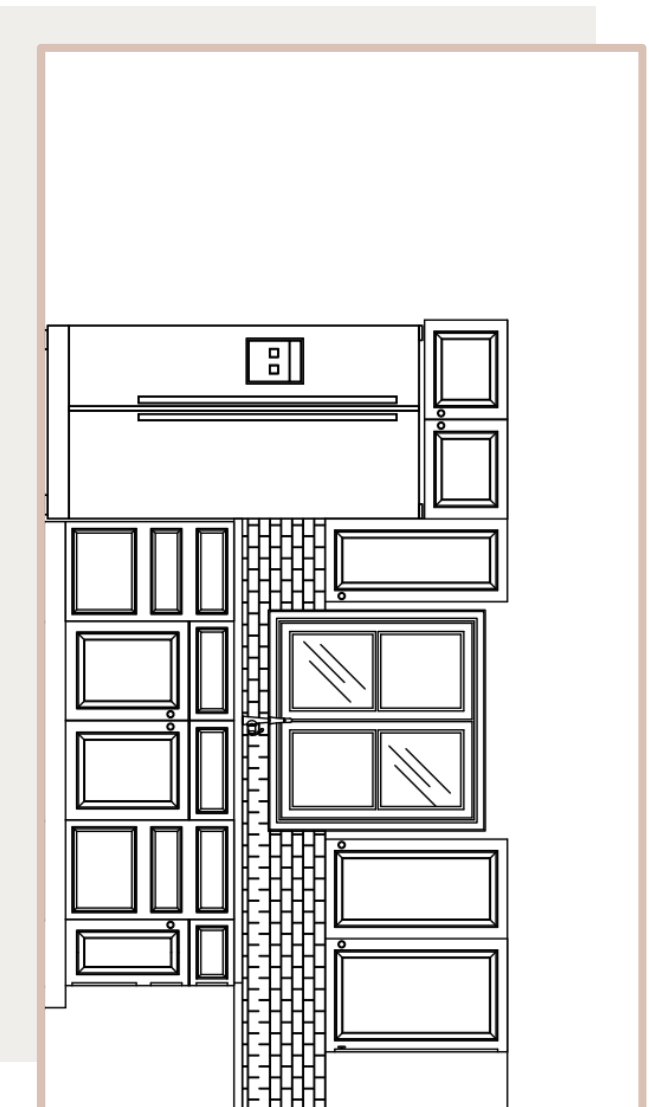


450 SQ FT.

SPECIFIED FURNITURE/ FINISHES



KITCHEN INTER ELEVATION



01 RECESSED WHITE CAB
BY MASTERBRAND CABINETS

02 QUARTZ COUNTERTOP
BY CAMBRIA

03 MARBLE MOSAIC TILE
BY ANATOLIA

04 STAINLESS STEEL
SIDE REFRIGERATOR
BY FRIGIDAIRE

RECESSED WHITE CABINETS

BY MASTERBRAND CABINETS

QUARTZ COUNTERTOPS

BY CAMBRIA

MARBLE MOSAIC TILE

BY ANATOLIA

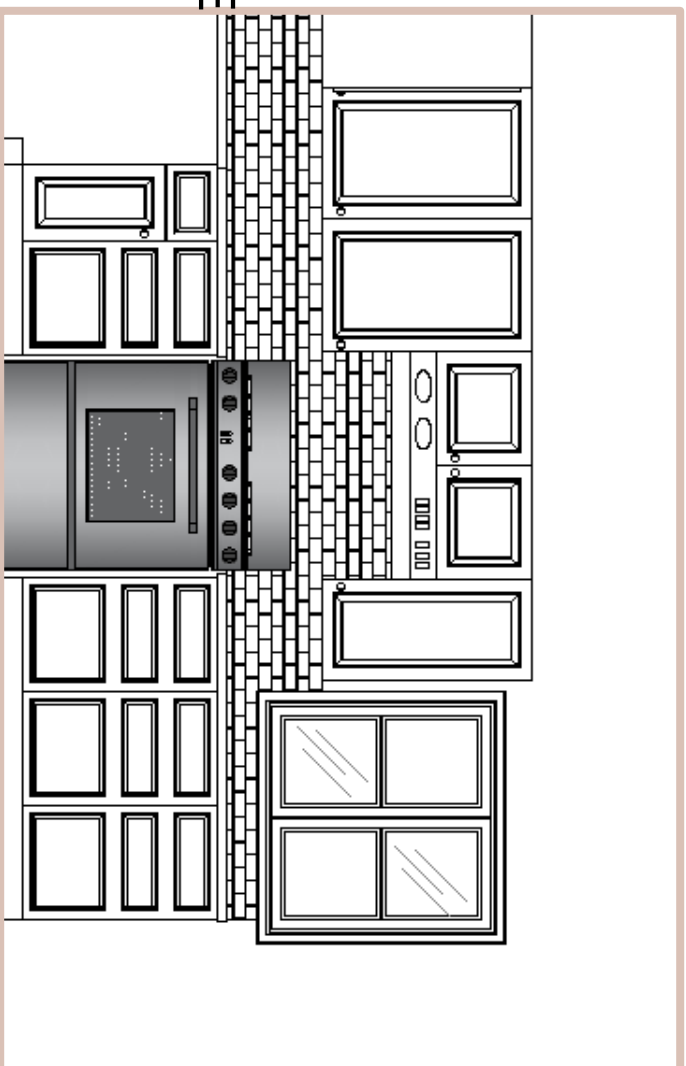
STAINLESS STEEL REAR

CONTROL ELECTRIC RANGE

BY FRIGIDAIRE

KITCHEN

INTERIOR ELEVATION

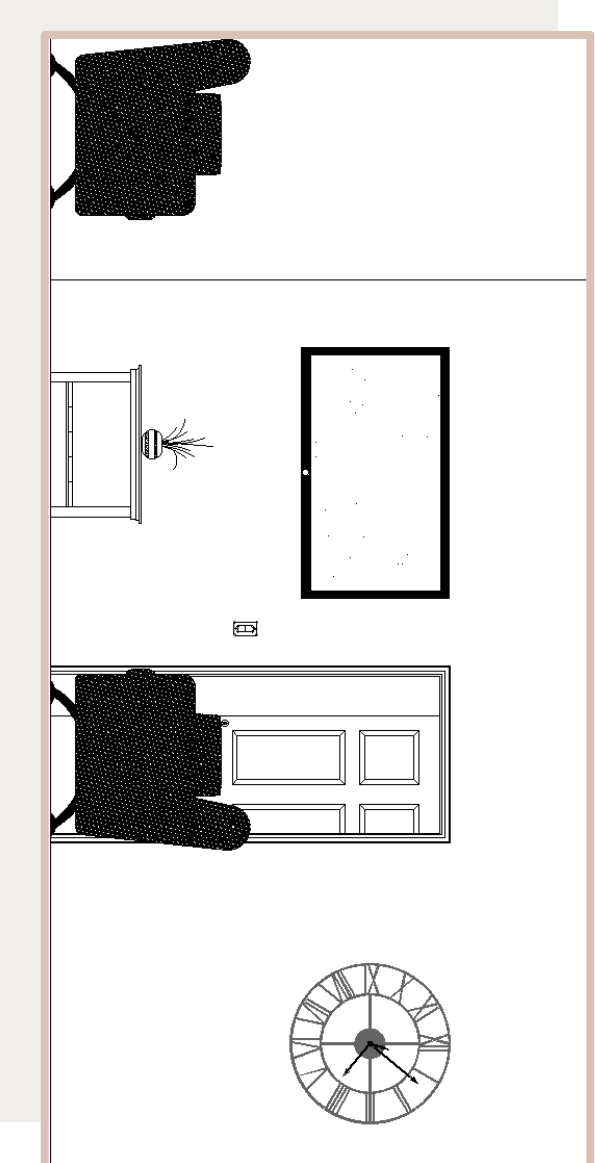


KITCHEN PERSPECTIVE



LIVING ROOM INTERIORS

ELEVATIONS



01

ANNABEL SOFA

BY BEST HOME FURNISHINGS

02

GRADEFA BRIDGE TABLE

BY BEST HOME FURNISHINGS

03

COCKTAIL TABLE

BY HOMELEGANCE

04

SOLID HARDWOOD FLOORING

BY VIRGINIA MILL WORKS CO.

LIVING ROOM PERSPECTIVE



QUEEN PLATFORM 01

BY HOMELEGANCE

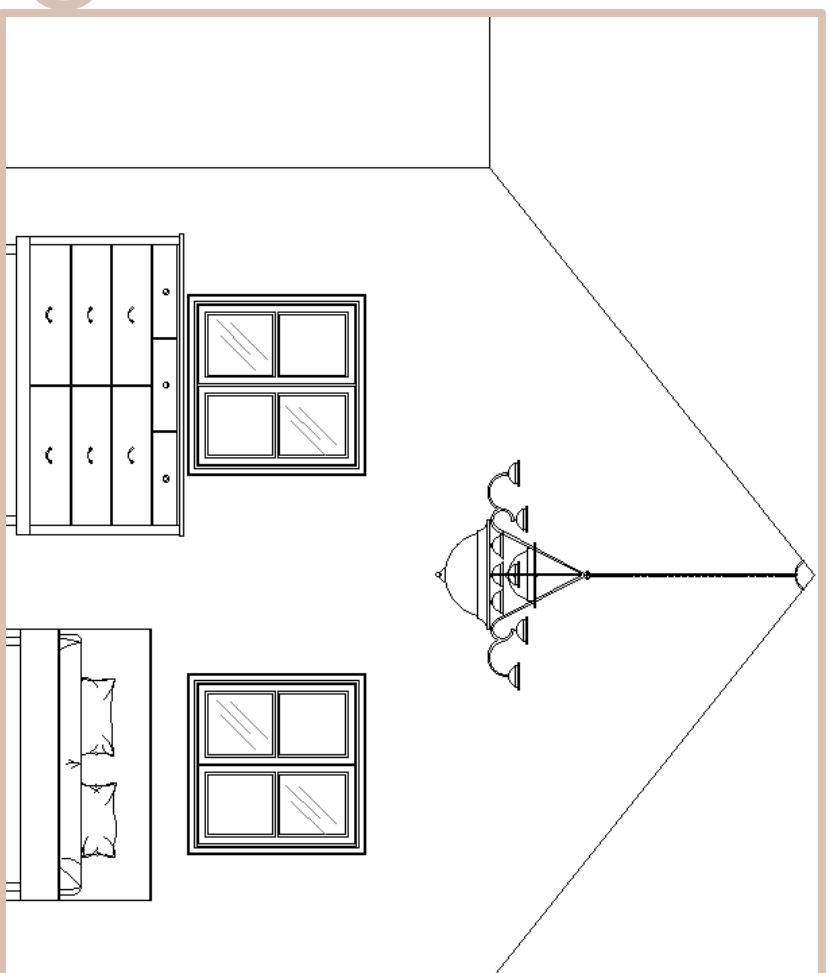
DRESSER#9W#5

BY HOMELEGANCE

02

Geometric Chandelier#3

BY HOMELEGANCE

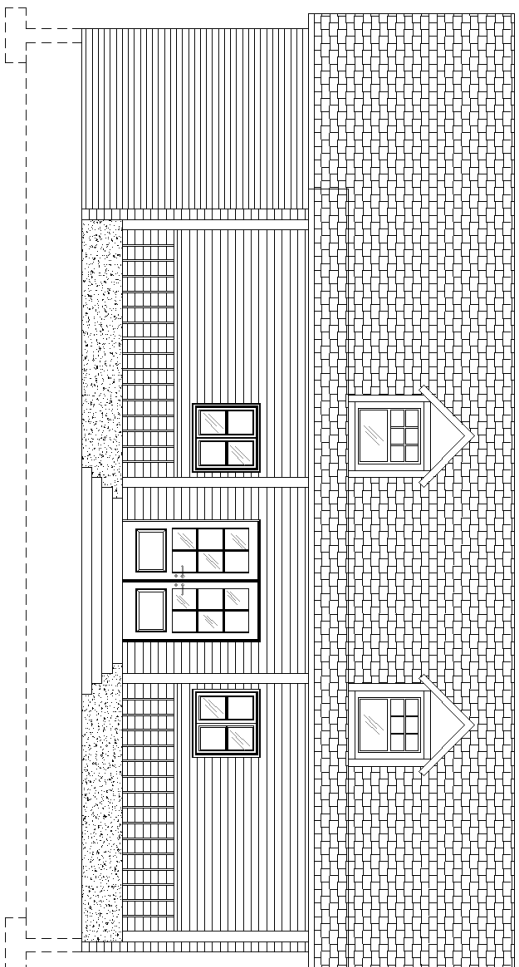


MASTER BEDROOM

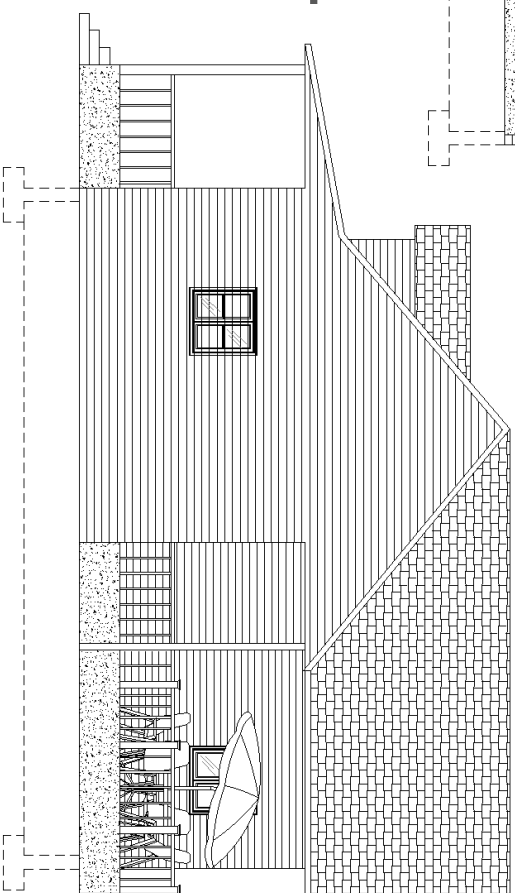
INTERIOR ELEVATION

MASTER BEDROOM PERSPECTIVE

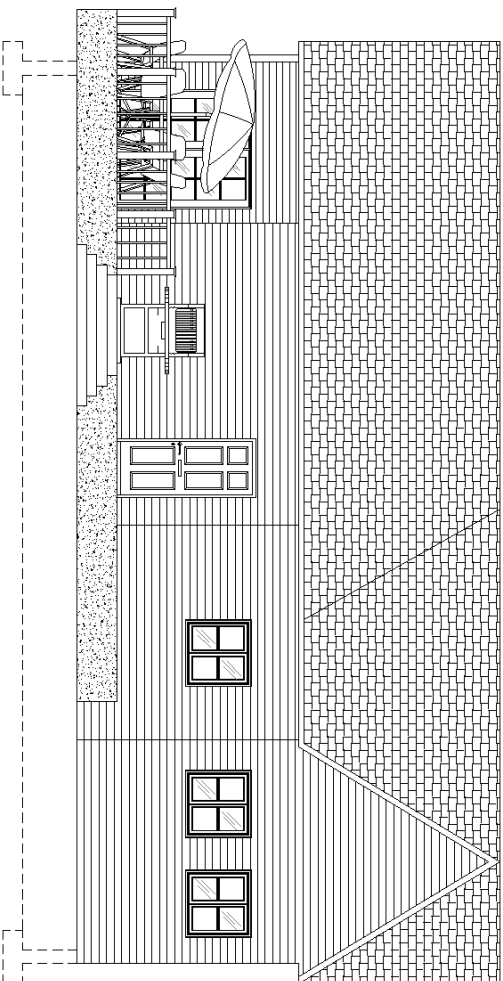
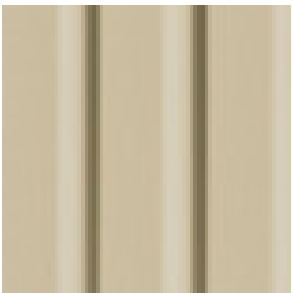
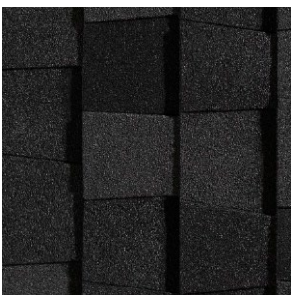
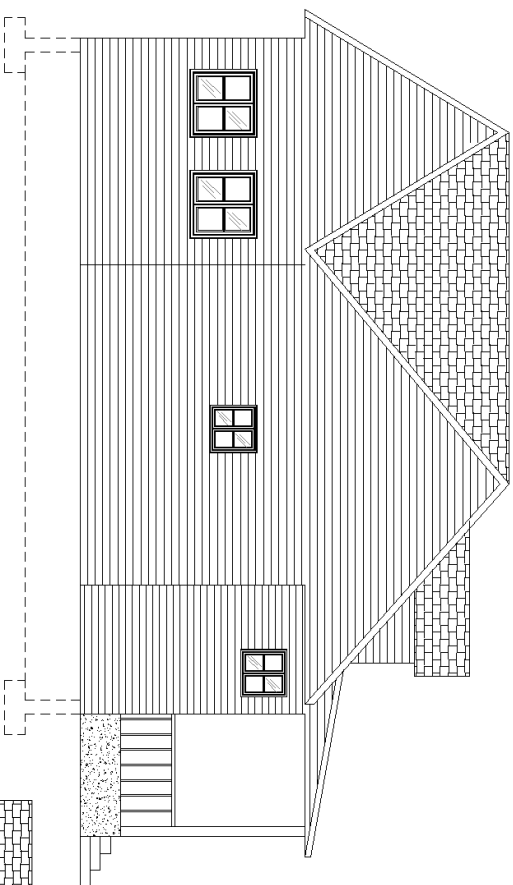




EXTERIOR ELEVATION



EXTERIOR ELEVATION



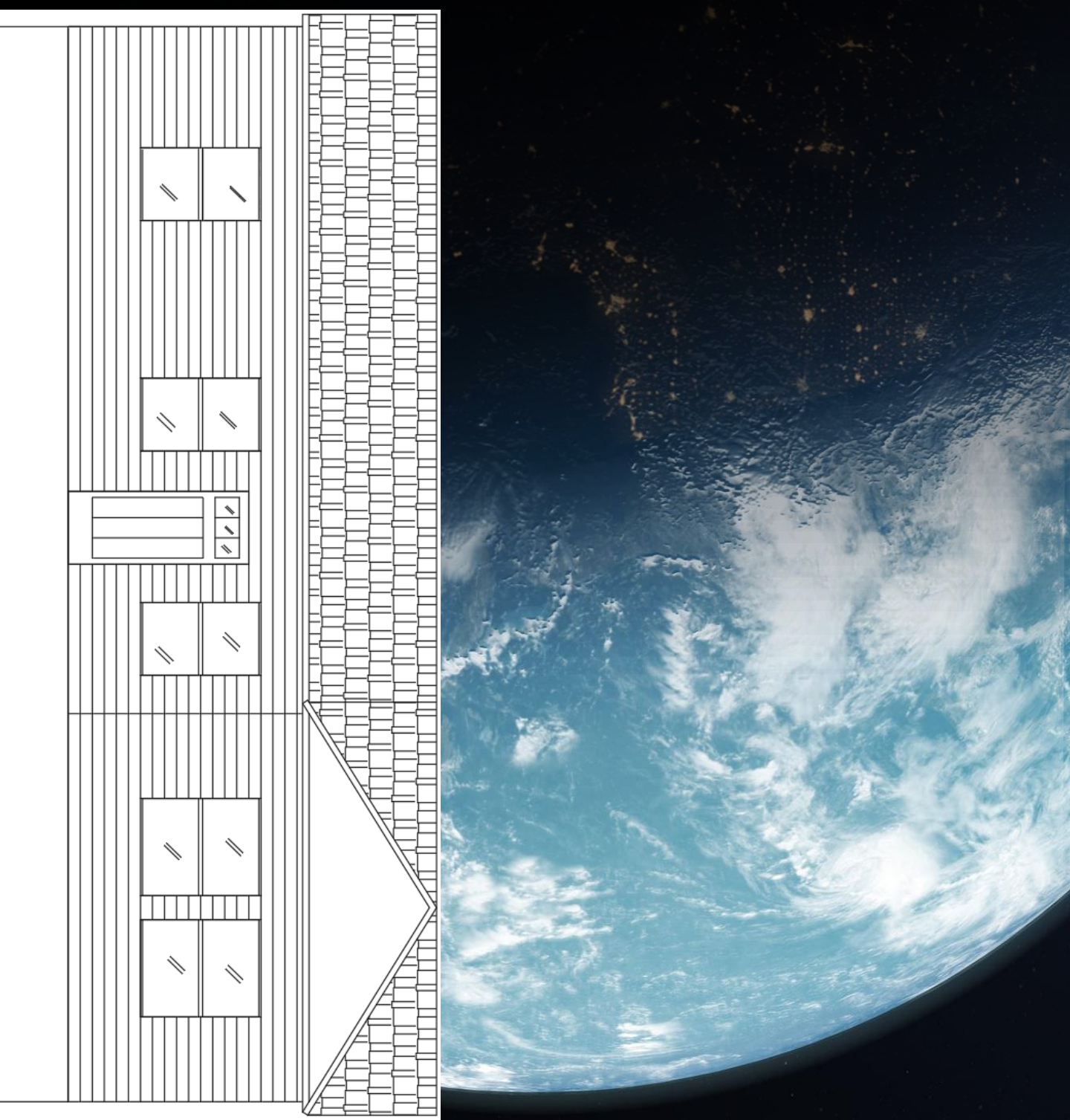
EXTERIOR PERSPECTIVE



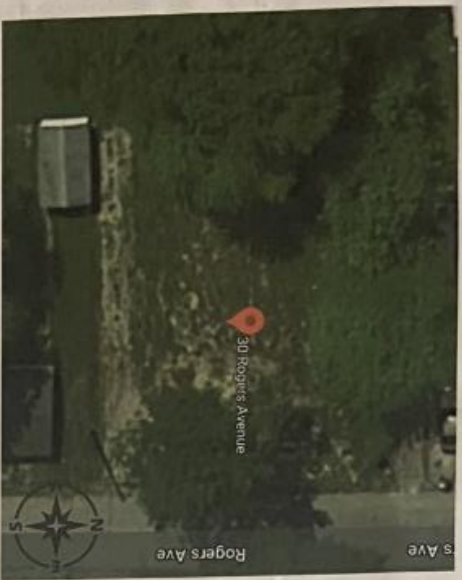


Sullivan House Project

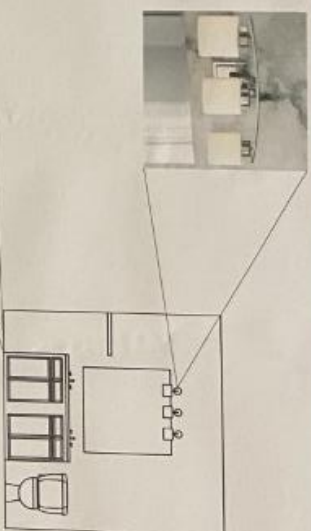
Taylor Walker



30 Rogers Avenue, Sullivan, IN

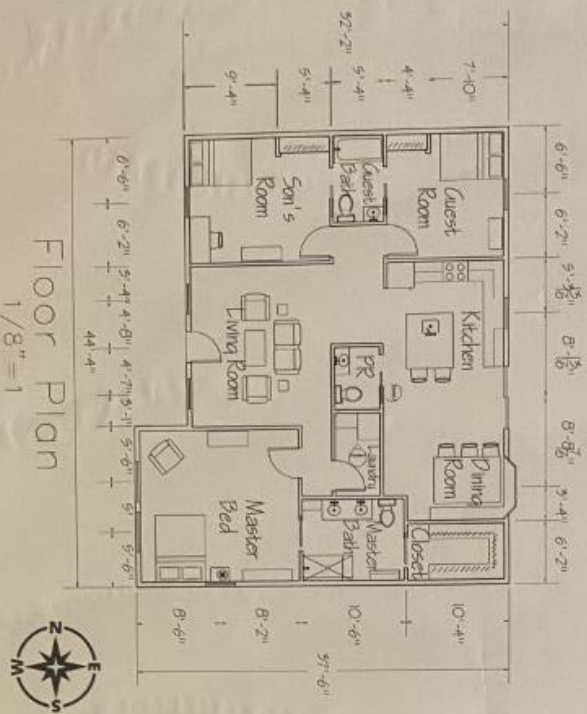


Interior Elevation A
1/4"=1

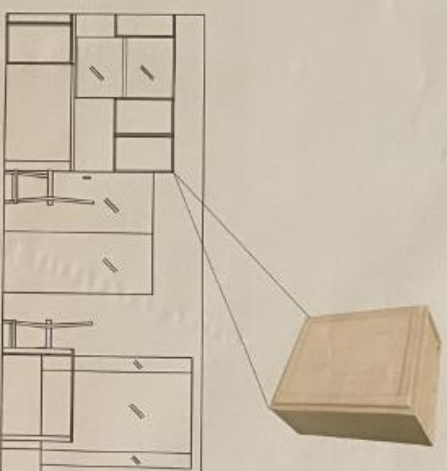


Key Notes

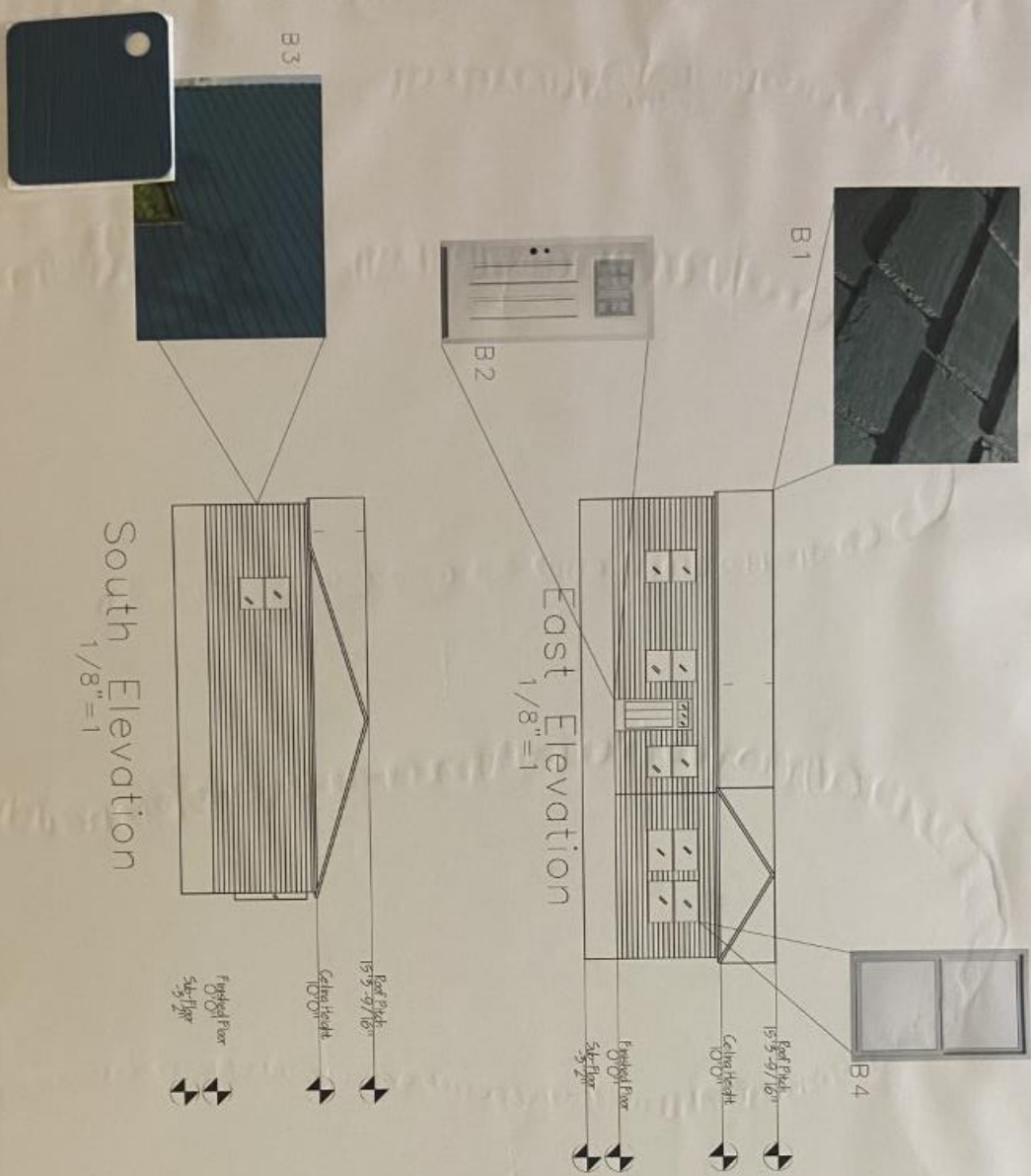
- A1 - Silkroad Exclusive 55-in Dark Walnut Double Sink Bathroom Vanity with Travertine Top
- A2 - Designs Classic Lighting: Lighting Aon Fuse Satin Nickel Bathroom Light
- A3 - Quality One: Kitchen Wall Cabinet



Floor Plan
1/8"=1



Interior Elevation B
1/4"=1



Key Notes

- B1 – American Slate: McKinley Heights Slates Roofing
- B2 – Emerson: Fiberglass Craftsman Right-Hand Inswing Ready To Paint Unfinished Prehung Single Front Door
- B3 – ABTCO Vinyl Siding: Cobot Blue
- B4 – Milgard Windows & Doors: 36 in. x 60 in. Tuscony Single Hung Vinyl Window – White

Key Notes

- C1 - Looptex Mills Inc: replacable "Smokey Brown"
- C2 - Nautica: Silver Birch NT634
- C3 - SuperFast Click Flooring: Hurricane Water-Resistant Laminate Flooring, Winchester
- C4 - Futon World: Ashley Full Futon Sofa Bed & Loveseat Chair Set Gray
- C5 - Darla 19" Wide Silver and Acrylic Modern Round Accent Table
- C6 - Stefano 36" Wide Silver and Acrylic Modern Coffee Table

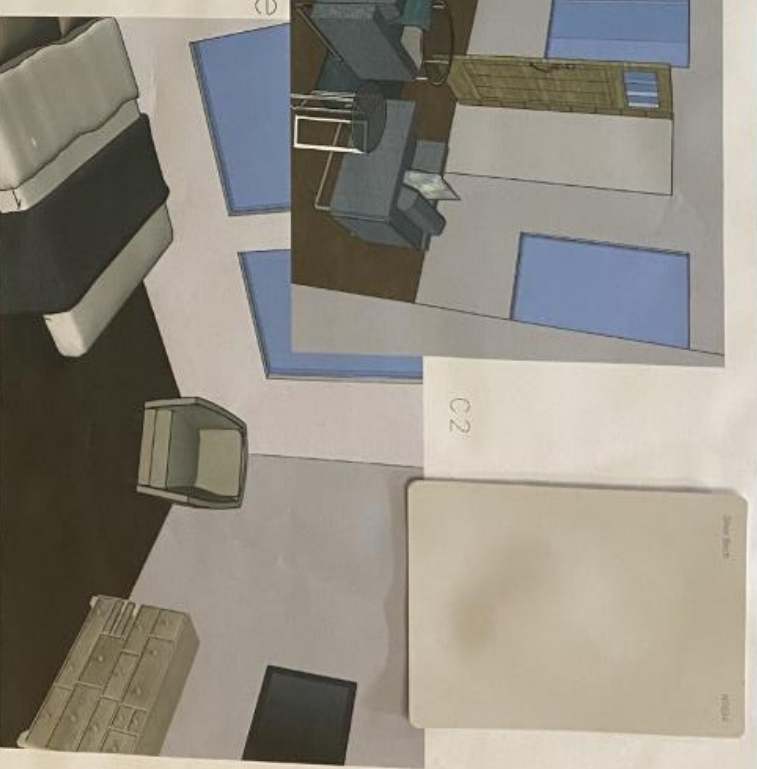
Living Room Perspective



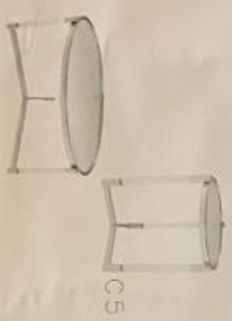
C3



Bedroom Perspective



C6



C4



C1



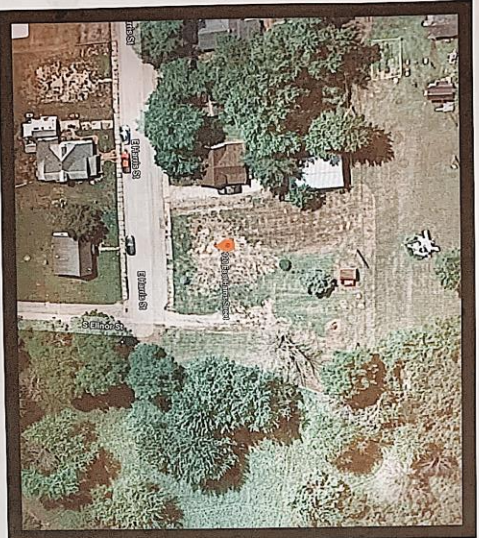


THE SULLIVAN PROJECT

Caitlin Lenczewski



The Sullivan Project



Design Concept Statement:

Organizational: The exterior of the house will be folk style home that will have farmhouse look but with Victorian elements from other styles. This one-story home is linearly organized along the perimeter with a centralized hallway and public area. It will give the Sullivan lot more modern and not so run down like other houses.

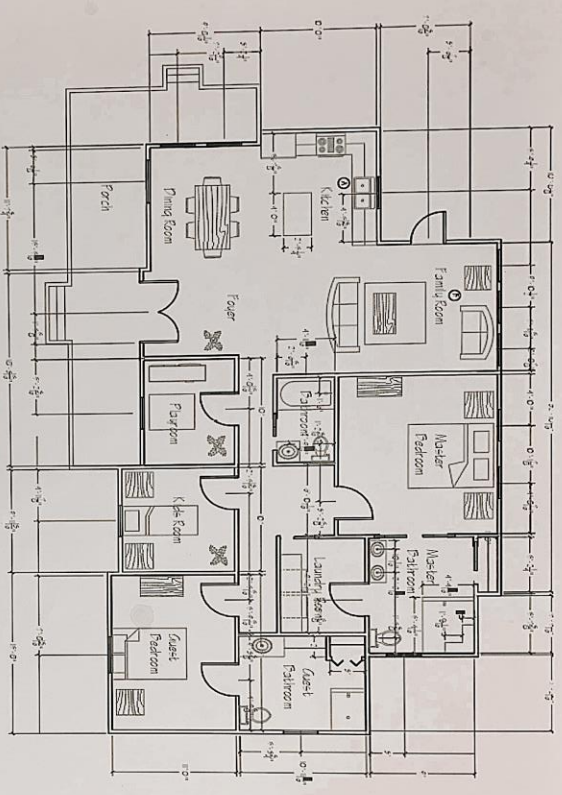
Character: This farmhouse style home blends with colonial elements as a throwback to the historicity of Sullivan. The colonial will make the inside traditional, relaxed, and the dark tones create a quite atmosphere, which ties in the country feel. Dark wood ceiling beams and dark wood flooring gives the house a rich, yet calm feel. A neutral monochromatic color scheme keeps the space relax for the elderly couple.

Caitlin Lenczewski

Board 1

IAD 251 Fall 2020

BOARD 1



Square Footage: 1,286

Caitlin Lenczewski

Board 2

IAD 251 Fall 2020

Furniture Floor Plan

Scale: 1/4"=1'



Frenchwood Open Front French Single Bowl Kitchen Sink



American Cup Pull Cup Cabinet Pull



Ice Blue Herringbone Glossy Ceramic Mosaic Tile



American Edison Hardware Cabinet Knob



French door Refrigerator in Stainless Steel

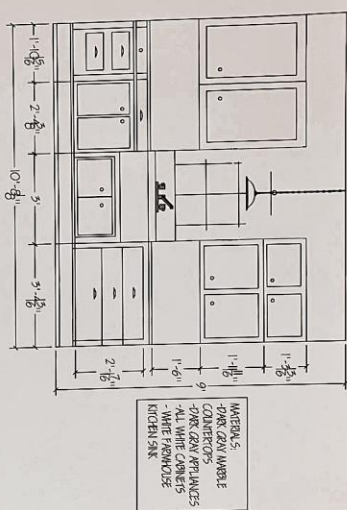


Delta Label Wood Pull Down Kitchen Faucet



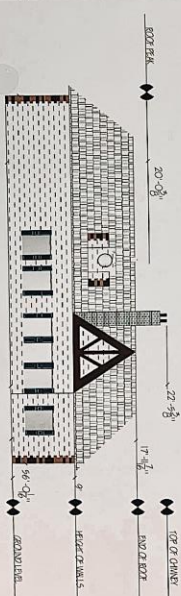
Audrey's Point 4 Light Polished Nickel Pendant

BOARD 2



Interior **E**levations

Exterior **E**levations



- MATERIALS:
- ASBESTOS WULF (W/1.0) IN ROOF
 - PINK OAK WARE
 - COUNTERTOPS
 - PINK OAK APPLIANCES
 - LAMINATE BACKINGS
 - KITCHEN SINK
 - PINK OAK WARE
 - COUNTERTOPS
 - PINK OAK APPLIANCES
 - LAMINATE BACKINGS
 - KITCHEN SINK

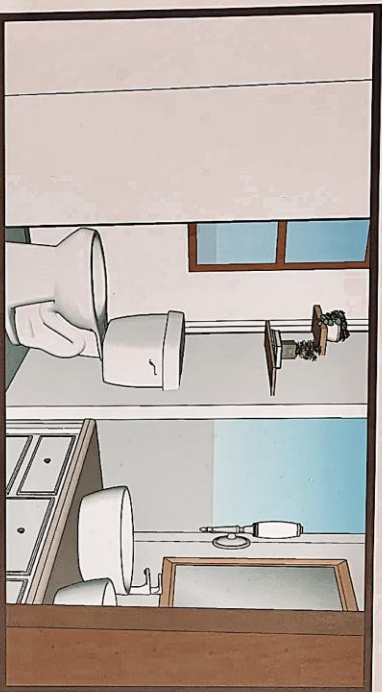
Caitlin Lenczewski

Board 3

IAD 251 Fall 2020

BOARD 3

Perspective/Design Concept



Rectangular Rustic Chandelier



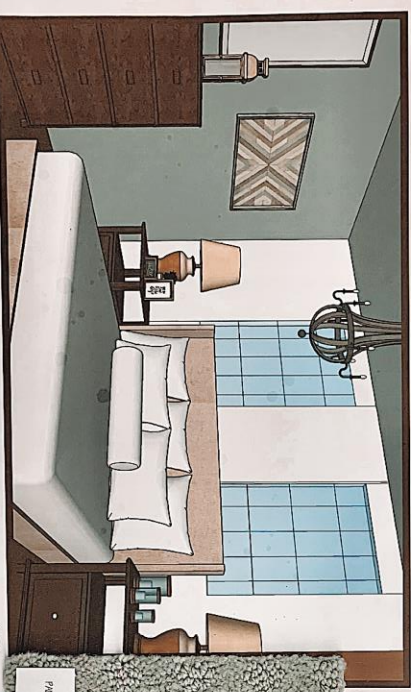
Single Flush Elongated Toilet with Slow Close



Rustic Wooden Pendant Chandelier Ceiling Light



RUSTIC WOODEN PENDANT CHANDELIER



PROVA C/WHITE COLOR CLEAR WHITE



WALNUT SAUCERWOOD / W/WHITE W/RED WOOD T/O/C

Caitlin Lenczewski

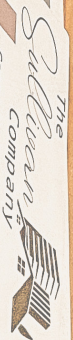
Board 4

AD 251 Fall 2020

BOARD 4

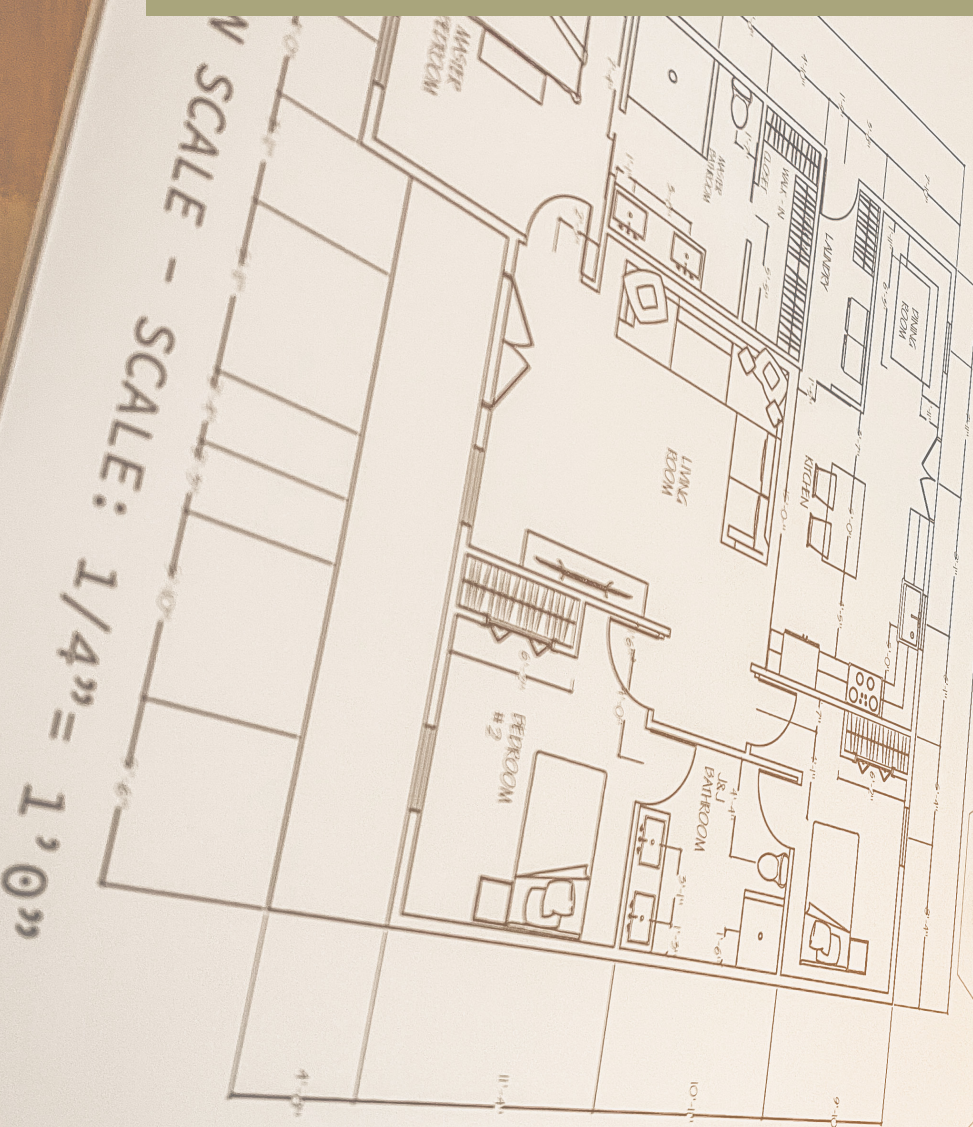
Sullivan, Indiana, Residential Project

Kendra Siddens



SULLIVAN RESIDENCE - IAD 251 - FALL 2020

Concept Statement
 Radiating out from the public living room & kitchen spaces, farmhouse living areas take on a modern style with white shiplap, both rustic & contemporary. Barn doors, modern hardware, fixtures & finishes create the perfect blend of country & sophistication.



SCALE - SCALE: 1/4" = 1'0"

- Finishes**
- FLR 1. Hurricane ridge core wood oak
 - CUT 1. allen + roth Quartz kitchen Countertop
 - TIL 1. Elida natural Marble Subway Tile
 - TIL 2 Satori Hexagon Unglazed Tile
 - CAB 1. Schuler Appaloosa Paint Panel Cabinetry
 - HAND 1. Braine

Radiating out from the public living room & kitchen spaces, Private living room & bedroom of this farmhouse. Marrying steel line the pe- doors & modern hardware & fixtures, creates the perfect blend of coun-

Inspiration Family



FARMER



SELF EMPLOYED MOM



LITTLE GIRL

SCALE -

SCALE: 1/16"

HAND 1. Braine

CAB 1. Schuler
Appaloosa Paint
Panel Cabinet

Hexagon Unglazed
Satori Hids
Marble Subway Tile
TIL 1. Elida natir
Kitchen + roth
Coun

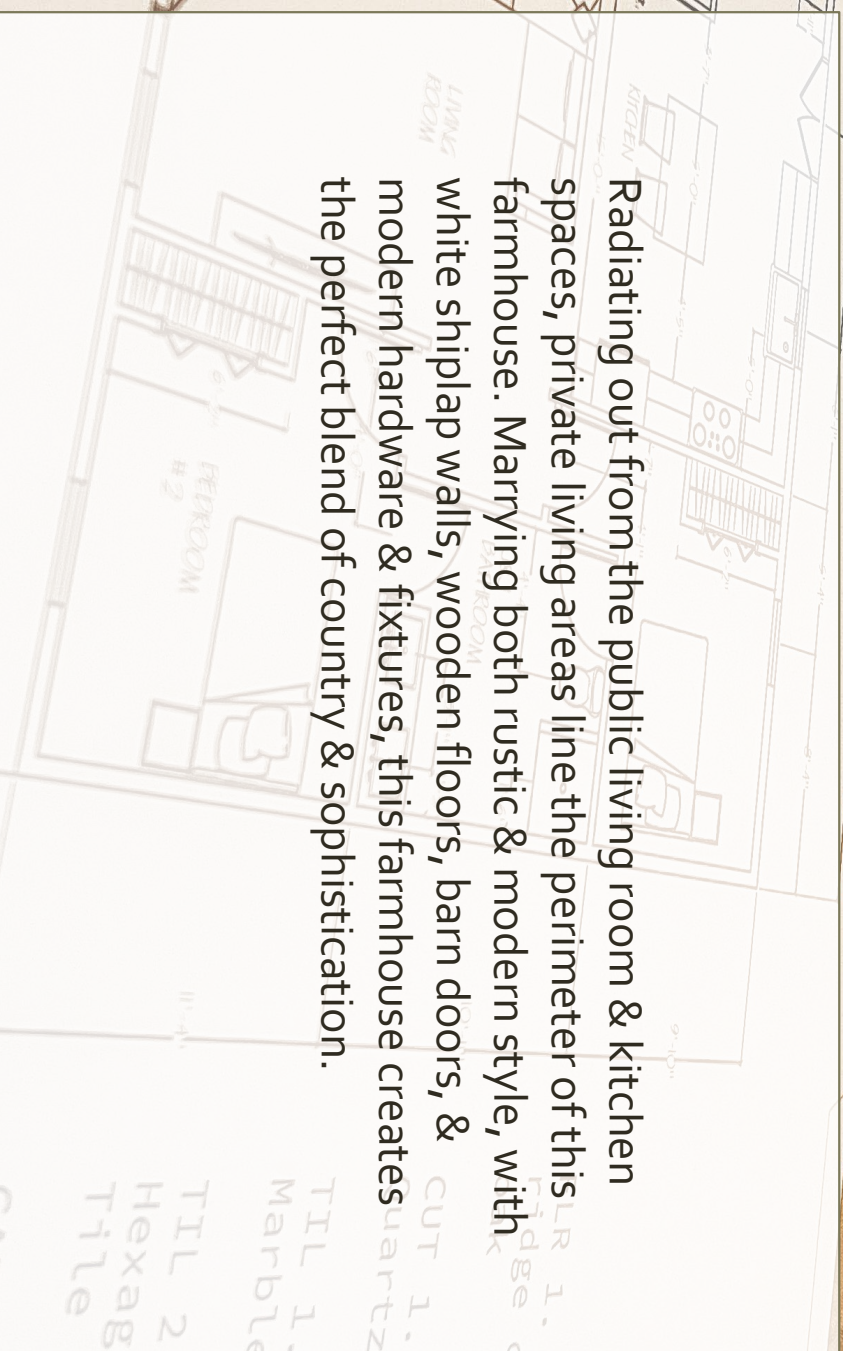
Finishes
African water
wood floor

Design Concept Statement

the living areas line the perimeter of this farmhouse. Marrying both rustic & modern shiplap walls, wooden floors, barn doors, & modern hardware & fixtures, this farmhouse creates the perfect blend of country & sophistication.



Radiating out from the public living room & kitchen spaces, private living areas line the perimeter of this farmhouse. Marrying both rustic & modern style, with white shiplap walls, wooden floors, barn doors, & modern hardware & fixtures, this farmhouse creates the perfect blend of country & sophistication.





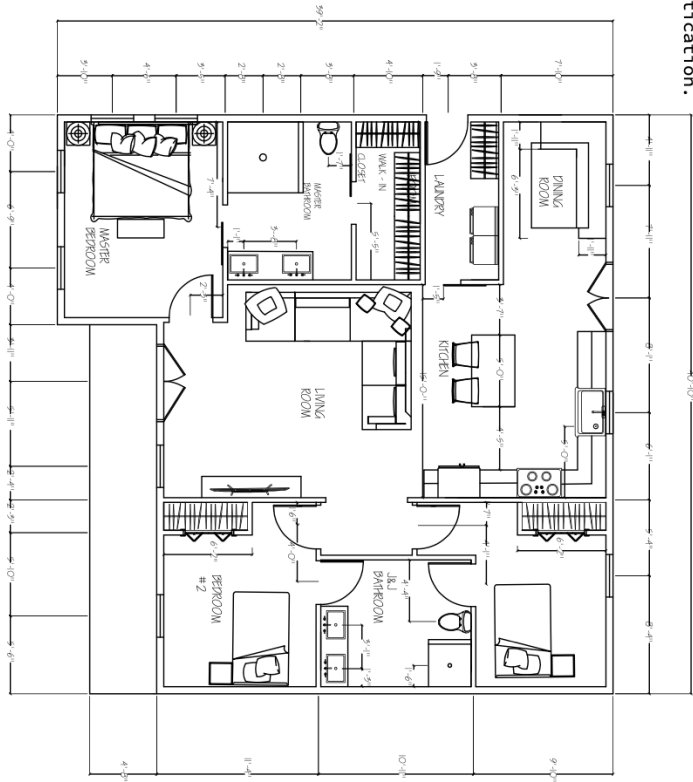
Concept Statement

Radiating out from the public living room & kitchen spaces, private living areas line the perimeter of this farmhouse. Marrying both rustic & modern style, with white shiplap walls, wooden floors, barn doors, & modern hardware & fixtures, this farmhouse creates the perfect blend of country & sophistication.



SULLIVAN RESIDENCE - IAD 251 - FALL 2020 - KENDRA SIDDENS

Board 1



FLOOR PLAN SCALE - SCALE: 1/4" = 1'0"

Finishes

- FLR 1. Hurricane water resistant ridge core wood flooring - amber oak
- CUR 1. allen + roth Effervesce Quartz Kitchen Countertop
- TIL 1. Elida natural stone 3x6 Marble Subway Tile
- TIL 2 Satori Hidson Carbon Black Hexagon Unglazed Porcelain Mosaic Tile
- CAB 1. Schuler Cabinetry Durham Appaloosa Painted Cherry Raised Panel Cabinet
- HAND 1. Brainerd 3" 76mm Bar Pull Flat Black



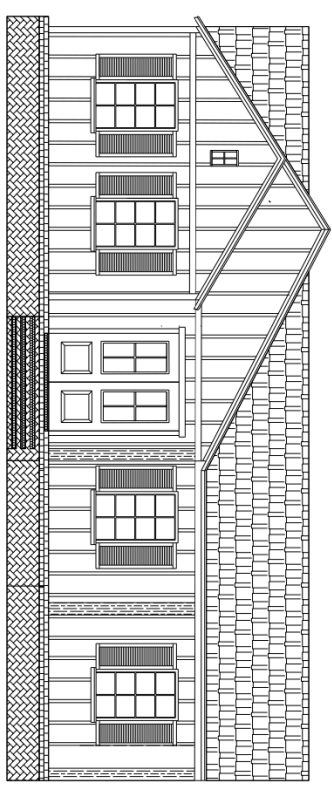
1

FLOOR PLAN SCALE

Panel Cab



Board 2



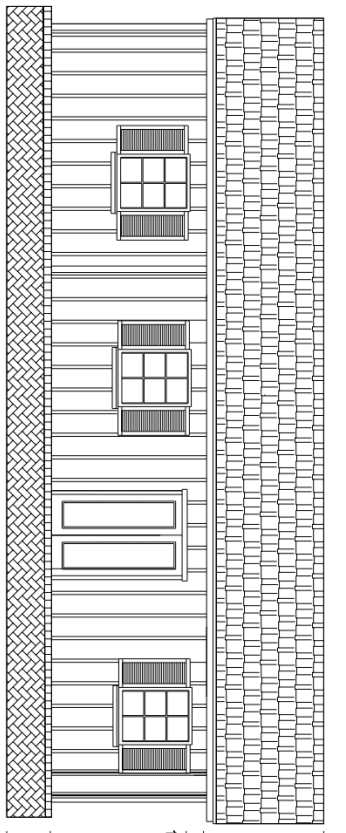
TOP OF ROOF
14'-0" ⊕

CEILING HEIGHT
TOP OF WINDOW/DOOR
1'-0" ⊕
7'-0" ⊕

FINISHED FLOOR
0'-0" ⊕
GROUND LEVEL
-2'-5" ⊕

NOTES
 SID1, White Board and Batten Siding

WIN1, W-2500 Series Black Painted Clad Wood Double Hung Window w/ Natural Interior and Screen



TOP OF ROOF
14'-0" ⊕

CEILING HEIGHT
TOP OF WINDOW/DOOR
1'-0" ⊕
7'-0" ⊕

FINISHED FLOOR
0'-0" ⊕
GROUND LEVEL
-2'-5" ⊕

DOR1, Knotty Alder 6-Lite TDL Double Door Unit with Grooved Bottom Panel and Clear Beveled Glass

BRK1, Red whitewashed brick laid in herringbone style

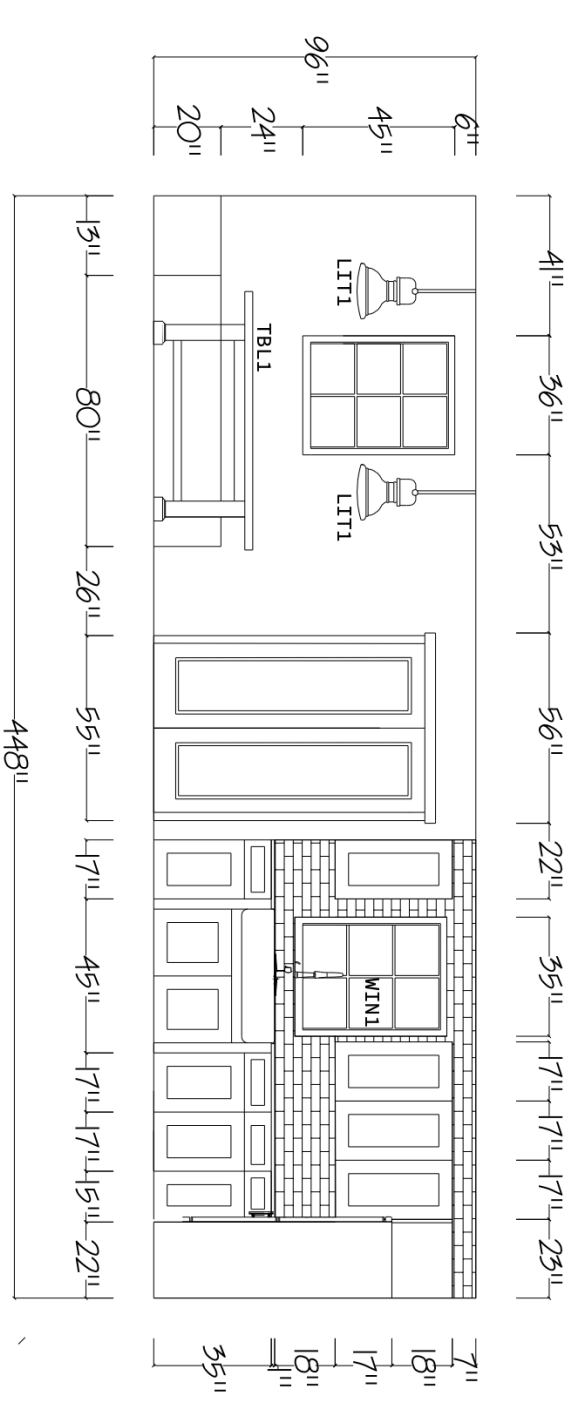
EXTERIOR ELEVATIONS SCALE - SCALE: 1/4" = 1'-0"

BRK1	
SID1	
DOR1	
SHU1	

FLOOR PLAN SCALE

HAND Panel Call

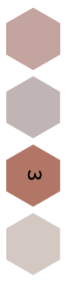
Board 3



KITCHEN ELEVATION SCALE - SCALE: 1/2" = 1'0"

NOTES

- TBL1. Pottery Barn - Banks Extending Dining Table, Gray Wash, 76" - 112" L
- LIT1. Westinghouse Boswell 9" Wide Single Light LED Mini Pendant with Metal Shade - Oil Rubbed Bronze
- SINK 1. Kohler Dickinson 33" Single Basin Tile-In Enameled Cast-Iron Kitchen Sink with Apron-Front



FLOOR PLAN SCALE

HAND Panel Call

Board 4



TIL 1



FLR 1.



TIL 2



HAND 1.

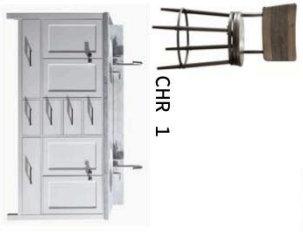
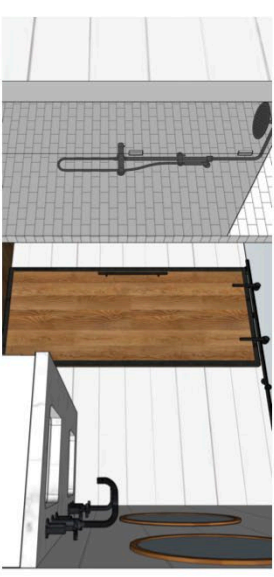
NOTES

COU 1. PB Comfort Roll Arm Slipcovered 3-Piece Sectional with Wedge

TOL 1. American Standard Two-Piece Dual Flush Toilet - White

VAN 1. ARIEL Cambridge 73-in White Double Sink Bathroom Vanity with White Natural Marble Top

CHR 1. Wayfair Cathie Swivel Bar & Counter Stool



CHR 1

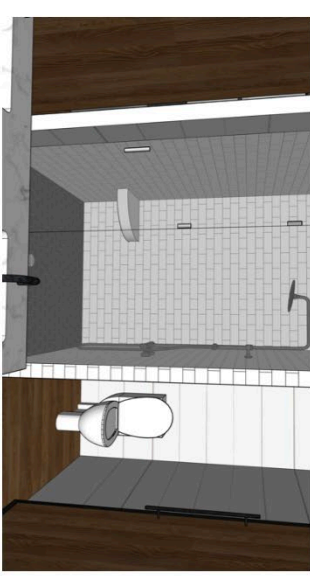
VAN 1



TOL 1



COU 1



FLOOR PLAN SCALING

HAND Panel Call

the public living room & the living areas line the perimeter. Marrying both the modern ship lap walls, wooden hardware & fixtures, the perfect blend of coun-



Thank you



FLOOR PLAN SCALE

FLR 1. Hurricane oak
 CUT 1. alite Quartz Kitec
 TIL 1. Elic Marble Subv
 TIL 2 Sato Hexagon Ur
 Tile
 CAB 1. SC Appaloosa Panel Cal
 HAND

Sullivan Residential Project

Alyssa Robben

IAD 251 / 220 / 230

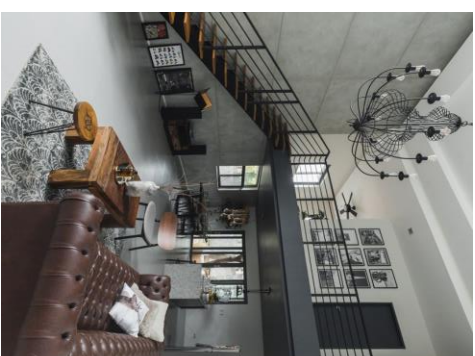
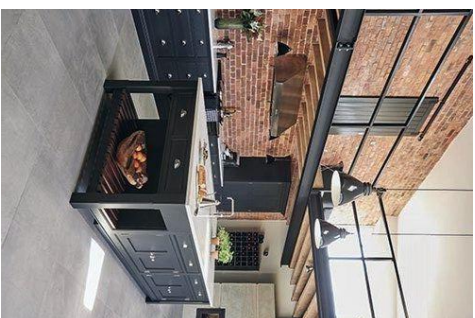
Fall 2020

Mayor's Request/Notes

- Wants home to blend with the character of the town
- Wants people to engage with each other: Very Neighborly
- Wants an Industrial Revolution look
- Innovative, Creative, Open Concepts
- No big garages, home should be seen first
- Preference is a homeowner not a rental
- Should fit with the feel of the town

Modern Industrial Design Research





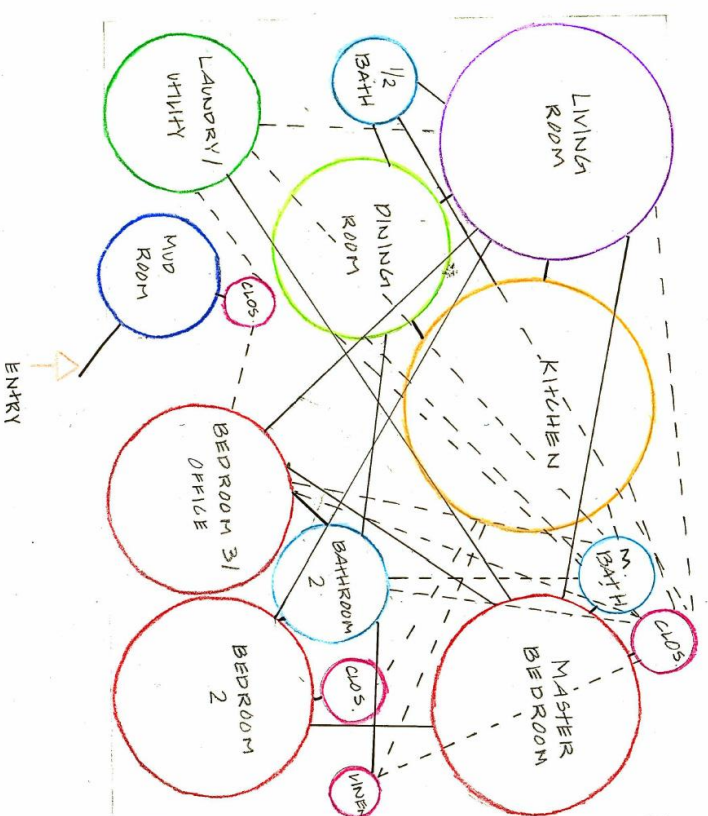
Inspiration Images

User Personas

I chose to create the Jones Family. An older couple with their grown kids who are looking to move back to Sullivan for their retirement but still have the space to host their children upon their return home.



Bubble Diagram



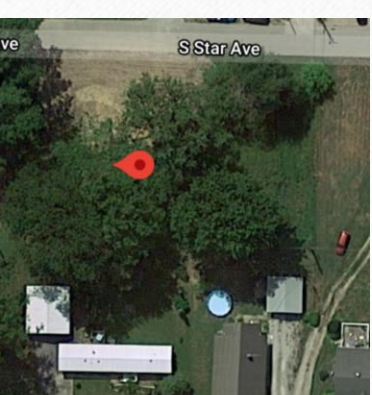
Site Plan Selection



112 W Washington Street

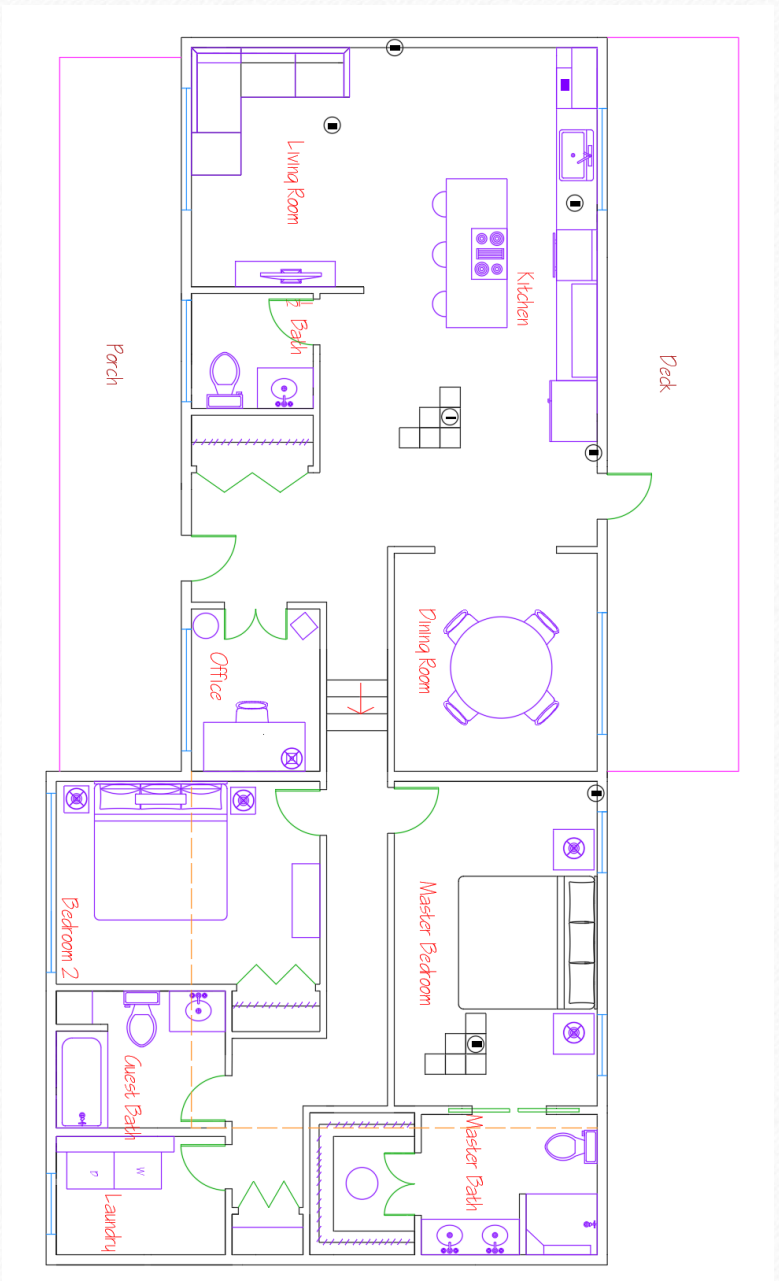


445 South Court Street



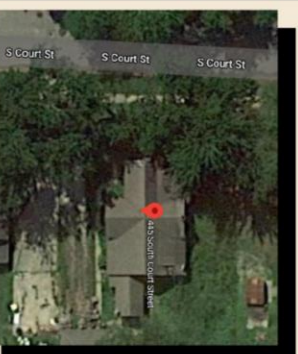
435 S Star Avenue

Floor Plan



Concept Statement

To Develop A Functional And Modern Home Ideal For Any Demographic For The City Of Sullivan. The Sleek Lines And Neutral Colors Emphasize The Modern Feel But Promote A High-end Feel To The Home. I Designed This Space To Be Functial For Entertaining, Family Gatherings, As Well As Comfortable For Any Tenant To Stay The Night In. The Wood Finishes, And Neutral Colors Create A Calm Yet Lively Fell Perfect For Any Homeowner To Enjoy For Many Years.



Site Plan: With Pre-existing Structure

Notes

- Home is split level with unfinished basement with access from outside
- Utilities located in basement
- Excavation will be required for basement entry
- No footage will be removed

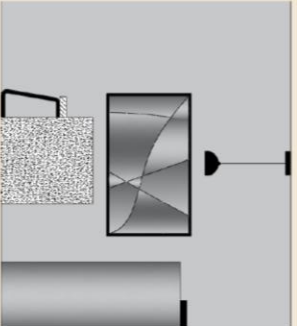
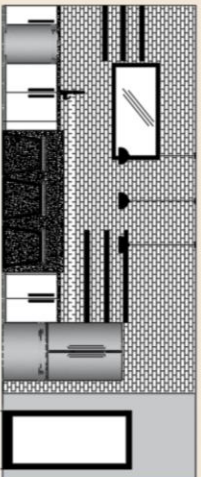
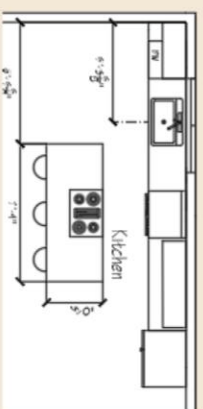


First Floor: Not To Scale

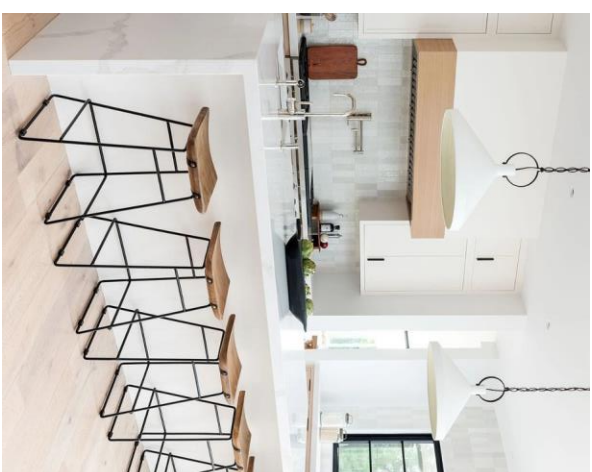
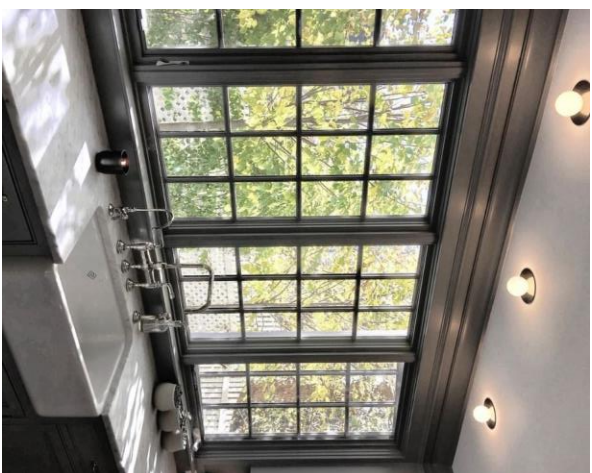


Second Floor: Not to Scale

Kitchen



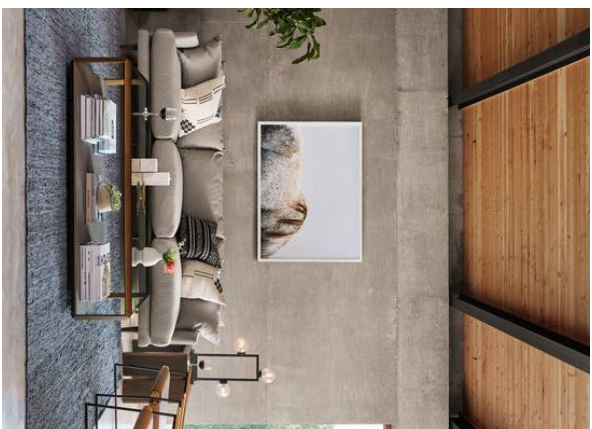
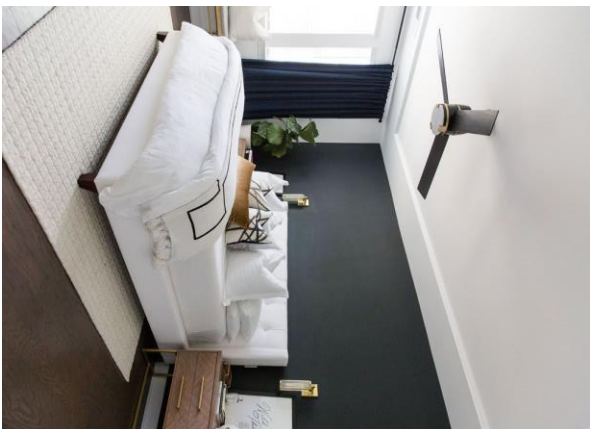
- Legend
1. Fridge Model# R22150J1S9JAA
 2. Dishwasher Model# DWS60L3J1USJAA
 3. Concrete Island
 4. White Wash Bedsteadish Brick
 5. Shaw Floors Toffee Elm Waterproof Vinyl
 6. Sherwin Williams Celery Root #HGSW4059
 7. Sink Model# MG3322T54
 8. Wilsonart Banbrook Grey Countertop



Inspiration Images

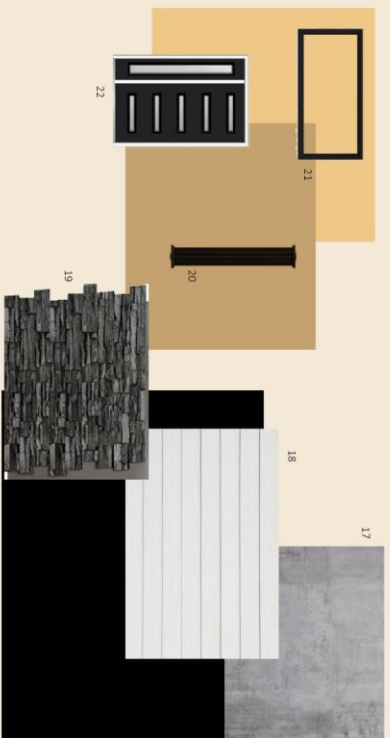
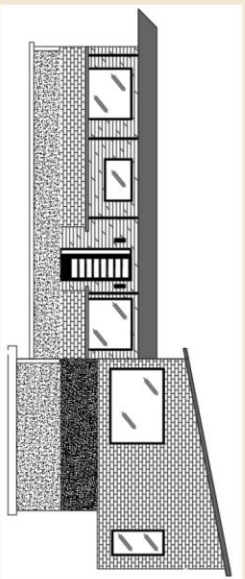
Master Bedroom and Living Room





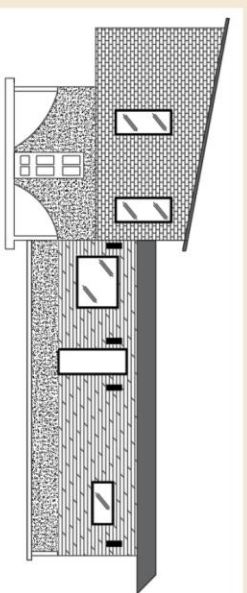
Inspiration Images

Exterior



Legend

- 17 Concrete Veneer
- 18 Wine Sliding
- 19 Dark Stone Veneer
- 20 Solid Aluminum Column Slab
- 21 Solid Yellow
- 22 Durable Frosted Glass Right-Hand Inswing steel Pushing Door





Inspiration Images