

REGULAR RESEARCH ARTICLE

Negative Prognostic Effect of Baseline Antipsychotic Exposure in Clinical High Risk for Psychosis (CHR-P): Is Pre-Test Risk Enrichment the Hidden Culprit?

Andrea Raballo[®], Michele Poletti, Antonio Preti

Section of Psychiatry, Clinical Psychology and Rehabilitation, Department of Medicine, University of Perugia, Perugia, Italy (Dr Raballo); Center for Translational, Phenomenological and Developmental Psychopathology (CTPDP), Perugia University Hospital, Perugia, Italy (Dr Raballo); Department of Mental Health and Pathological Addiction, Child and Adolescent Neuropsychiatry Service, Azienda USL-IRCCS di Reggio Emilia, Reggio Emilia, Italy (Dr Poletti); Department of Neuroscience, University of Turin, Turin, Italy (Dr Preti).

Correspondence: Andrea Raballo, MD, PhD, Section of Psychiatry, Clinical Psychology and Rehabilitation, Department of Medicine, University of Perugia Piazzale Lucio Severi 1, 06132, Perugia, Italy (andrea.raballo@unipg.it).

Abstract

Introduction: Sample enrichment is a key factor in contemporary early-detection strategies aimed at the identification of help-seekers at increased risk of imminent transition to psychosis. We undertook a meta-analytic investigation to ascertain the role of sample enrichment in the recently highlighted negative prognostic effect of baseline antipsychotic (AP) exposure in clinical high-risk (CHR-P) of psychosis individuals.

Methods: Systematic review and meta-analysis of all published studies on CHR-P were identified according to a validated diagnostic procedure. The outcome was the proportion of transition to psychosis, which was calculated according to the Freeman-Tukey double arcsine transformation.

Results: Thirty-three eligible studies were identified, including 16 samples with details on AP exposure at baseline and 17 samples with baseline AP exposure as exclusion criterion for enrollment. Those with baseline exposure to AP ($n=395$) had higher transition rates (29.9%; 95% CI: 25.1%–34.8%) than those without baseline exposure to AP in the same study ($n=1289$; 17.2%; 15.1%–19.4%) and those coming from samples that did not include people who were exposed to AP at baseline ($n=2073$; 16.2%; 14.6%–17.8%; $P<.05$ in both the fixed-effects and the random-effects models). Heterogeneity within studies was substantial, with values above 75% in all comparisons.

Conclusions: Sample enrichment is not a plausible explanation for the higher risk of transition to psychosis of CHR-P individuals who were already exposed to AP at the enrollment in specialized early-detection programs. Baseline exposure to AP at CHR-P assessment is a major index of enhanced, imminent risk of psychosis.

Keywords: Antipsychotic, clinical high risk, prevention, prognosis, psychosis, treatment

Introduction

Research on clinical high-risk for psychosis (CHR-P) is central for the deployment of suitable clinical care pathways aiming at preventing (or mitigating) the biopsychosocial consequences of

psychosis. In the last 30 years, the early-detection field has been engaged in a robust effort to conceptualize and develop prognostic models for trans-diagnostic staging and individualized

Received: January 18, 2021; Revised: April 19, 2021; Accepted: May 21, 2021

© The Author(s) 2021. Published by Oxford University Press on behalf of CINP.

This is an Open Access article distributed under the terms of the Creative Commons Attribution-NonCommercial License (<http://creativecommons.org/licenses/by-nc/4.0/>), which permits non-commercial re-use, distribution, and reproduction in any medium, provided the original work is properly cited. For commercial re-use, please contact journals.permissions@oup.com

Significance Statement

Major guidelines do not indicate antipsychotic medication as first-line treatment for the prevention of psychosis in individuals at clinical high risk (CHR-P). Despite that, recent meta-analyses reveal that the use of such medications is relatively widespread in the field and seems to be associated with higher imminent risk of transition to psychosis. Therefore, we wished to test if such increased risk could reflect differences in pre-recruitment risk enrichment (aka pre-test risk enrichment) across the studies rather than medication exposure. We found, however, that despite heterogeneities in referral and sampling strategies, pre-test risk enrichment in CHR-P does not seem to play any specific role in the observed negative prognostic effect of baseline antipsychotic exposure. Given the intuitive implications for the treatment of psychosis and the prevention of its undesired long-term outcomes, the results urge further investigations on the clinical effects of antipsychotic medications in young help-seekers at high risk for psychosis.

risk stratification (see [Sanfelici et al., 2020](#) for an overview). However, in such tumultuous growth, the accelerated search for scalable predictors has led to some undetected distortion, such as the neglect of obvious clinical confounders. This is the case of baseline exposure to antipsychotics (AP) in individuals enrolled within the CHR-P group ([Raballo et al., 2019, 2020a,b, 2021; Raballo and Poletti, 2019](#)).

There is indeed substantial meta-analytical evidence that almost 1 out of 5/4 individuals enrolled as CHR-P in specialist centers is already undergoing AP treatment at the moment of the first CHR-P evaluation ([Raballo et al., 2019, 2020a,b](#)). Needless to say, such exposure may alter the clinical presentation (e.g., modulating the frequency or severity of positive psychotic symptoms during the CHR assessment) as well as the natural course of transition to psychosis (see [Raballo et al., 2019](#) for a synthetic overview). Even more crucially, there is meta-analytic evidence that baseline AP exposure in CHR-P individuals is associated with an even higher imminent risk of transition to psychosis ([Raballo et al., 2020a,b](#)).

The magnitude of this confounder and its implications for the field have been overlooked until recently ([Raballo and Poletti, 2019](#)). Among other things (e.g., reduced precision of current prognostic estimates and risk stratification), the widespread conflation of AP-naïve and AP-exposed help-seekers in the same CHR-P group might hamper the identification of the effectiveness of new pharmacological and non-pharmacological treatments, given that a treatment that is effective in AP-naïve CHR-P individuals may be less effective in AP-exposed help-seekers (who might already be in a first-episode psychosis even if psychometrically attenuated due to the AP treatment).

Most importantly, there is meta-analytic evidence that CHR-P individuals undergoing AP treatment at the time of enrollment have different longitudinal trajectories and risk of transition to psychosis compared with AP-naïve CHR-P patients (29% vs 16%: risk ratio of transition 1.47 in the fixed-effects model) ([Raballo et al., 2020b](#)). This suggests that (1) baseline AP treatment plausibly signals an increased clinical severity (although still formally within the psychometric criteria for CHR-P), which is associated with increased risk of longitudinal transition to psychosis; and/or (2) the AP-exposed CHR group at baseline presumably includes a fraction of “pharmacologically attenuated first-episode psychosis” that have a higher likelihood to convert into psychometric full-blown psychosis.

However, another explanatory hypothesis is also possible, that is, that the higher conversion rates in AP-exposed CHR-P might be an epiphenomenon of the enrichment strategies adopted in the different study settings (aka pretest risk enrichment). Concretely, it is possible that the different recruitment and sampling strategies in the studies could lead to different pretest prevalence of more severe cases across the CHR-P centers ([Fusar-Poli et al., 2016, 2017](#)).

The guiding question of the current meta-analytic investigation is therefore the following: is pre-test risk enrichment the key to the apparent negative prognostic effect of baseline antipsychotic exposure in CHR-P?

Aim

The current study was designed to test the possible hidden role of pretest risk enrichment on the (previously demonstrated) impact of baseline AP on CHR-P transition to psychosis risk. We wanted to verify if AP-naïve CHR-P participants present similar transition prevalence independently if they belong to CHR-P samples that exclude baseline AP exposure (i.e., pure AP-naïve CHR-P source samples) or from CHR-P samples that allow the inclusion of help-seekers under ongoing AP treatment at baseline (i.e., source samples encompassing both AP-naïve and AP-exposed CHR-P). Therefore, we meta-analytically contrasted the risk of transition in 3 sub-populations: CHR-P with baseline exposure to AP, CHR-P without baseline exposure to AP who were enrolled from the same source studies, and CHR-P enrolled in studies having AP exposure as explicit exclusion criterion.

Indeed, we expected that, should higher pretest risk enrichment be involved in the higher transition rates of baseline AP-exposed CHR-P, the overall transition rate of AP-naïve CHR-P drawn from these latter samples should be higher than one of those AP-naïve CHR-P from samples that never enrolled individuals undergoing AP treatment at baseline.

Methods

Study Selection

The systematic review and meta-analysis were planned and executed according to the Preferred Reporting Items for Systematic Reviews and Meta-Analyses guidelines ([Moher et al., 2009](#)). We searched PubMed/Medline and the Cochrane library from inception up to October 30, 2020, by using the following key terms: “Ultra high risk” OR “Clinical high risk” AND “psychosis” AND “transition” OR “conversion.” This search retrieved 1842 articles, of which 98 were systematic review or meta-analysis, in PubMed/Medline and 196 trials in the Cochrane Central Register of Controlled Trials. Two authors (M.P., A.P.) evaluated the list of extracted articles and decided about inclusion or exclusion according to the following criteria:

- Written in English;
- Details information about samples with people diagnosed at CHR-P of psychosis based on a validated diagnostic procedure (i.e., using an interview and formal criteria to determine the CHR-P status of the participants);

- Reports numeric data about the sample and the outcome at a predefined follow-up time, and has transition to psychosis as one of the outcomes;
- Reports AP exposure as exclusion criterion, or in case of inclusion of participants on AP, reports raw data on AP baseline exposure in relation to the transition outcome.

Data Extraction

After exclusion of duplicates (including articles repeatedly reporting the results of the same trial or with overlapping samples) and articles that were unrelated to the main topic (i.e., studies on brain imaging or genetic markers), individual studies were included when they matched the inclusion criteria. Discrepancies were solved by discussion consulting a third experienced researcher (A.R.). The references of the retrieved articles and extracted reviews on the topic were scanned to identify potentially missed studies. At the end of this procedure, 33 independent studies were included in the systematic analysis and the subsequent meta-analysis (Figure 1: Preferred Reporting Items for Systematic Reviews and Meta-Analyses Flow chart).

The following variables were extracted from the included studies: authors and year of publication of the study, location of the study, criteria and instrument for diagnosis, criteria for transition to psychosis, sample size at baseline and follow-up, data on AP exposure (yes/no) based on the outcome (transition/no transition), duration of the follow-up, and number of

cases that transitioned psychosis at the end of follow-up by group. Three aggregated subgroups were then analyzed: CHR-P with baseline exposure to AP, CHR-P without baseline exposure to AP from the same source studies, and CHR-P enrolled from samples that excluded individuals who were exposed to AP at baseline. Quality assessment was rated according to the Quality Assessment Tool for Observational Cohort and Cross-Sectional Studies. Discrepancies in extraction of data were solved by discussion within the research team.

Statistical Analysis

All analyses were carried out with the “meta” package (Schwarzer et al., 2015) and the “metafor” package (Viechtbauer, 2010) running in R version 3.5.1 (R Core Team, 2018).

The outcome of the meta-analysis was the proportion of transition to psychosis. All proportions were estimated with the variance-stabilizing [Freeman and Tukey (1950)] double arcsine transformation, since there is evidence that it outperforms other proposed methods (e.g., logit transformation) of estimating prevalence (Barendregt et al., 2013), especially when the proportion of cases is expected to be small. Between-study variance and variance of the effect size parameters across the population were estimated with the tau-squared statistics using Empirical Bayes estimator (Veroniki et al., 2016); its 95% CI was calculated by using the Q-Profile method

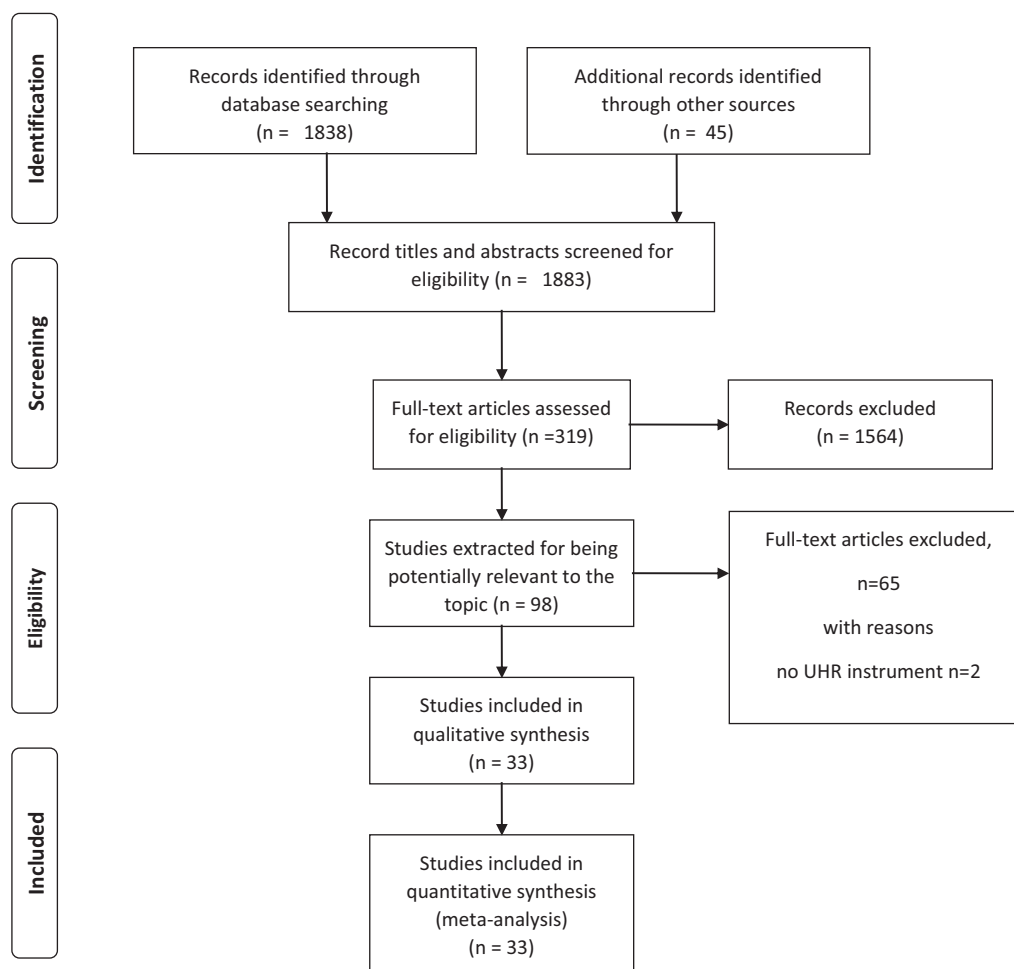


Figure 1. PRISMA 2009 flow diagram.

(Viechtbauer, 2010) with Knapp and Hartung (2003) correction. Continuity correction of 0.5 was applied in studies with zero cell frequencies.

Both fixed- and random-effects summary estimates were reported along with a corresponding 95% confidence interval (CI) for each outcome in forest plots. Fixed-effects models estimate a common effect for the studies included in the meta-analysis (Viechtbauer, 2010). The random-effects models aim to provide inference about the average effect in the entire population from which the studies are expected to be drawn. Essentially, the random-effects model accounts for the heterogeneity of the studies, that is, the fact that the effects that are estimated from the studies come from a distribution of true effects, which depend on a source of variability that is not limited to sampling error (Borenstein et al., 2010). It should be borne in mind that, in the attempt to model some (but not all) heterogeneity in the studies, the random-effects model tends to inflate the role of small studies (Borenstein et al., 2010); in doing so, it loses power compared with the fixed-effects model (Jackson and Turner, 2017).

In all analyses, heterogeneity was assessed with Cochran's Q and I^2 statistics (Huedo-Medina et al., 2006). Cochran's Q test assesses the null hypothesis that the true effect size is the same in all studies (Borenstein, 2020). A low P value (i.e., $P < .10$) of the Q -statistic indicates that variation in the study-specific effect estimates is due to heterogeneity beyond that depending on sampling error. The I^2 statistic measures the extent to which the variance in observed effects reflects variance in true effects rather than sampling error (Borenstein, 2020). The higher the I^2 , the greater the impact of the variance in true effects. According to an agreed rule of thumb, I^2 values 40% to 60% indicated moderate heterogeneity, and values above 75% were considered indicative of substantial heterogeneity (Higgins and Cochrane Collaboration, 2002).

Results

The literature search identified 33 eligible studies: 16 studies that allowed baseline AP exposure and specified the transition outcome based on AP exposure vs AP no exposure (reported in Table 1), and 17 studies that considered baseline AP exposure as exclusion criterion (reported in Table 2).

Studies that included CHR-P with AP exposure at baseline disproportionately used the Structured Interview for Prodromal Symptoms as a measure to define CHR-P status (13 out of 16 studies: 81.2%); conversely, in the studies that included only CHR-P participants who were never exposed to AP, the Comprehensive Assessment of At Risk Mental States was the most used tool to define the condition (9 out of 17 studies: 52.9%).

Most studies were from European countries (19 out of 33 studies: 57.6%), while others were from North American countries (USA and Canada: 7 out of 33 studies: 21.2%) and Asian countries (7 out of 33 studies: 21.2%). There were no studies from Central or South America or from Africa.

Those studies including CHR-P with AP exposure at baseline were almost equally distributed from the North American countries (USA and Canada: 6 out of 16 studies: 37.6%), Asian countries (5 out of 16 studies: 31.2%), and European countries (5 out of 16 studies: 31.2%), while the majority of studies including only drug-naïve CHR-P patients were from European countries (14 out of 17 studies: 82.4%).

Compared by probability of transition to psychosis according to the criteria listed in each study, the 3 groups of AP-exposed, AP-not exposed, and AP-never exposed patients were found to differ both within and between studies (Figure 2, forest plot). The

3 groups differed from each other, with the AP-exposed samples having higher transition rates than the AP-not exposed samples and the AP-never exposed samples (Table 3). The AP-not exposed samples and the AP-never exposed samples did not differ from each other. The differences were statistically significant at the conservative threshold of $P < .05$ in both the fixed-effects and random-effects models (Table 3 for details).

Heterogeneity within studies was substantial, with values above 75% in all comparisons. However, there was no relevant asymmetry in the funnel plot of each group of samples, and the Egger test showed no relevant bias in publication (see supplementary Figs. 1–3).

Discussion

The results of the present meta-analysis indicate that sample enrichment is not a plausible explanation for the higher risk of transition to psychosis of CHR-P participants who were already exposed to AP at the enrollment in specialized early-detection programs. Rather, the results further corroborate the evidence that baseline exposure to AP (at the moment of CHR-P assessment) is a major index of enhanced, imminent risk of incurring a full-blown psychotic episode at follow-up (Raballo et al., 2020a,b).

While this is clearly an important aspect to consider for refining current risk stratification (and amending some of the shortcomings of current CHR-P definitions; see Preti et al., 2014 and van Os and Guloksuz, 2017), it would be essential to further deconstruct the nature of such phenomenon. Three main explanatory hypotheses can be advanced in this respect, each of which warranting further, targeted empirical exploration.

Hypothesis 1

Pro-Psychotic Effect of AP in CHR-P via Sensitization or Neurotoxicity—AP exert per se a psychotogenic action on the brain of CHR-P individuals. The reason can be a sensibilization effect on the dopaminergic neurons because of persistent block of the pre- and post-synaptic receptors, causing a hypersensitivity of the neurons to dopaminergic discharge (Chouinard et al., 2017; Nakata et al., 2017; Yin et al., 2017). A second mechanism may be a direct toxic effect on the neurons. There is some evidence that long-term AP treatment may associate with brain structure changes (Ho et al., 2011), especially a parietal lobe reduction and basal ganglia increase (Huhtaniska et al., 2017). Brain structural changes were reported in both CHR-P individuals (Katagiri et al., 2019) and first-episode psychosis patients (Akudjedu et al., 2020).

Hypothesis 2

Masking Effect of AP “Attenuating” the Clinical Presentation of the Psychotic Episode—Individuals exposed to AP may have already transitioned towards psychosis, yet the ongoing AP treatment at baseline might have prevented the psychometric identification of these “pharmacologically attenuated first-episode psychosis” cases (Raballo et al., 2020a). Strictly speaking, this group is no longer in a high-risk condition, but rather it has already reached the endpoint outcome (i.e., the first-episode psychosis) although unrecognized.

Hypothesis 3

Delaying Effect of AP “Postponing” Transition to Psychosis—The subgroup of CHR-P who had been prescribed AP before

Table 1. Studies Included in the Meta-Analysis and Reporting Raw Baseline Data on AP Exposure in Relation to Transition to Psychosis

Study first author	Year	Site	Baseline CHR sample		Follow-up mo	Follow-up sample		Raw transitions	UHR instrument	Baseline AP exposure %	Mean age (SD) y	Gender (F) %	Conv. on AP baseline		Nonconv. on AP baseline		n
			n	%		n	%						n	%	n	%	
van Tricht	2010	Netherlands	61		36	61	18	SIPS	26.2	19.6 (2.7)	31.1		7	11	9	34	
Liu	2011	Taiwan	59		36	59	21	SIPS	79.6	21.5 (4)	44.1		20	1	27	11	
Ziermans	2011	Netherlands	72		12	58	9	SIPS	24.1	15.3 (1)	38.9		1	8	13	36	
Schlosser	2012	USA	125		12	84	27	SIPS	22.4	16.9 (3.5)	38		13	14	15	42	
Katsura	2014	Japan	106		30	82	14	CAARMS	37.3	20 (4.3)	62.3		3	11	31	37	
DeVylder	2014	USA	100		30	100	26	SIPS	14	20.1 (3.8)	24		4	22	10	64	
Perez	2014	USA	38		24	31	15	SIPS	28.9	17.4 (3.5)	39.5		5	10	3	13	
Schultze-Lutter	2014	Germany	194		24	194	74	SIPS	13.8	24.9 (6)	37		14	67	14	99	
Bedi	2015	USA	34		30	34	5	SIPS	20.8	21.4 (3.5)	67.6		1	4	6	23	
Katagiri	2015	Japan	41		12	41	7	SIPS	17.1	23.1 (6.7)	75.6		7	0	0	34	
Labad	2015	Spain	39		12	39	10	PANSS	17.9	22.3 (4.6)	30.8		4	6	3	26	
Brucato	2017	USA	200		24	200	60	SIPS	5.5	20 (3.85)	27		9	51	22	118	
Collin	2020	China	158		13	158	23	SIPS	15.2	18.77 (4.9)	49.4		6	17	18	117	
Bang	2019	Korea	77		24	77	16	SIPS	31.2	19.9 (3.4)	40.3		4	12	20	41	
Yoviene-Sykes	2020	USA	764		12	431	33	SIPS	20.4	19.1 (4.4)	41.8		21	12	67	331	
Zarogianni	2019	Switzerland	37		48	35	16	BSIP	20	25.2 (6.33)	40		6	10	1	18	

Abbreviations: AP, antipsychotic; BSIP, Basel Screening Instrument for Psychosis; CAARMS, Comprehensive Assessment of At Risk Mental States; Conv., converters to psychosis at follow-up; CHR, Clinical High Risk; Nonconv., nonconverters to psychosis at follow-up; PANSS, Positive and Negative Syndrome Scale; SIPS, Structured Interview for Prodromal Syndromes.

enrollment in the program of care consists of individuals with severe ongoing symptoms and a rapidly deteriorating clinical picture (i.e., sufficiently alarming as to motivate the treating staff to initiate AP prescription before the emergence of full-blown positive symptoms). This subgroup might have an accelerated evolution towards psychosis, and the ongoing AP administration at enrollment temporarily delays the transition to psychosis so that they fulfill baseline CHR-P criteria yet develop a full psychotic state soon afterwards. Therefore, (1) this group is a hyper-CHR-P subpopulation (i.e., a subgroup with the highest imminent risk of transition within CHR-P), and (2) AP prescription is to be considered a red warning flag for enhanced transition to psychosis.

In favor of hypothesis 3, there are 2 randomized controlled trials that tested the preventive action of low-dose AP against placebo in CHR-P help-seekers (McGorry et al., 2002; McGlashan et al., 2006). Both studies found low-dose AP was able to reduce transition to psychosis in the short term (6 months) compared with placebo, but the protective effects fade at 12 months (McGlashan et al., 2006; McGorry et al., 2013). However, hypothesis 2 cannot be entirely ruled out by these findings. Indeed, distinguishing “pharmacologically attenuated first-episode psychosis” (hypothesis 2) cases from hyper-CHR-P patients with rapid progression towards psychosis (hypothesis 3) is clearly a clinical priority and an important step forward in the field. In this respect, time-dependent trajectories may be a key feature to operate such distinction, since CHR-P patients with rapid evolution towards psychosis are likely to be recognized relatively early as transitioned cases, whereas “pharmacologically attenuated first-episode psychosis” cases are presumably more likely to persist into an “attenuated symptom condition” until additional factors (social stress, substance use, and/or discontinuation of the AP treatment) intervene.

As for hypothesis 1, the best test of the hypothesis is knowing in detail the longitudinal clinical history of the participants in the study. If participants were maintained under AP during the study, they might have benefitted from the attenuation of their first-episode psychosis status until relapse into full-blown psychosis. Conversely, when the AP prescription has been suspended as per current guidelines (NICE, 2014; European Psychiatric Association: Schmidt et al., 2015), they might have been exposed to the sensibilization effect of the AP on the dopaminergic receptors and led by this sensibilization to an enhanced risk of transition to psychosis.

There was a high variability within the studies included in this meta-analysis. The main source of variability across the studies was in all likelihood the different procedures of enrollment of the participants. Differences in the procedures of enrollment indeed led to samples that allowed the inclusion of participants who had already received or were currently prescribed AP treatment, whereas other samples excluded them from enrollment. Nonetheless, sample enrichment did not seem a sufficiently powerful mechanism to explain the substantial divergence in transition prevalence between AP-exposed and AP-naïve CHR-P individuals. Bias in publication was not present in the analyzed groups. However, as can be seen in the provided forest plot, there were differences in transition to psychosis prevalence within groups not attributable to past exposure to AP that might depend on the characteristics of the sample (age, gender proportion, comorbidity, and so on). We were not able to explore the role of these characteristics because they were not systematically reported in the source studies, that is, the details about associated characteristics by subgroup (AP exposed and not exposed in the same sample) were too few to allow a meta-regression.

Table 2. Studies Included in the Meta-Analysis and Considering Baseline AP Exposure as Exclusion Criterion

Study first author	Year	Site	Baseline CHR sample		Follow-up		Follow-up sample		Raw transitions		UHR instrument	Mean age (SD)		Gender (F) %
			n	n	mo	n	n	n	y	%				
Kéri	2009	Hungary	67	67	12	31	67	31	CAARMS	21.2 (3.6)	46.3			
Lemos-Giráldez	2009	Spain	61	45	36	14	45	14	SIPS	21.7 (3.83)	34.4			
Amminger	2010	Austria	40	40	12	11	40	11	PANSS	16 (1.7)	67.5			
Ruhmann	2010	EU	245	183	18	37	183	37	SIPS	23.0	44.1			
Addington	2012	Canada/USA	172	146	24	26	146	26	SIPS	19.76 (4.5)	42.7			
Koutsouleris	2012	Germany	48	35	48	15	35	15	PANSS	24.7 (5.8)	33.3			
Simon	2012	Switzerland	73	42	24	10	42	10	SIPS	20.4 (5.2)	39.7			
Lee	2013	Singapore	173	173	6	6	173	6	CAARMS	21.3 (3.5)	32.4			
Hui	2013	UK	60	60	12	6	60	6	CAARMS	20.2 (2.9)	48.3			
Fusar-Poli	2013	UK	290	278	24	44	278	44	CAARMS	22.9 (4.61)	43.9			
Welsh	2014	UK	30	28	24	2	28	2	CAARMS	15.8 (1.4)	53.3			
Armando	2015	Italy	35	35	12	7	35	7	SIPS	13.8 (2.1)	48.57			
Spada	2016	Italy	22	22	6	4	22	4	CAARMS	16.1 (1)	45.5			
Francesconi	2017	Italy	67	58	24	21	58	21	CAARMS	24.5 (3.4)	42.2			
Poletti	2018	Italy	51	21	24	4	21	4	CAARMS	15.4 (1.56)	58.8			
Zhang	2020	China	273	219	36	55	219	55	SIPS	20.5 (6.21)	51.6			
Howes	2020	UK	244	216	36	52	216	52	SIPS	15.8 (1.26)	54.1			
			51	36	15	10	36	10	CAARMS	23 (4)	43			

Abbreviations: AP, antipsychotic; CAARMS, Comprehensive Assessment of At Risk Mental Status; Conv, converters to psychosis at follow-up; CHR, Clinical High Risk; Nonconv, nonconverters to psychosis at follow-up; PANSS, Positive and Negative Syndrome Scale; SIPS, Structured Interview for Prodromal Syndromes.

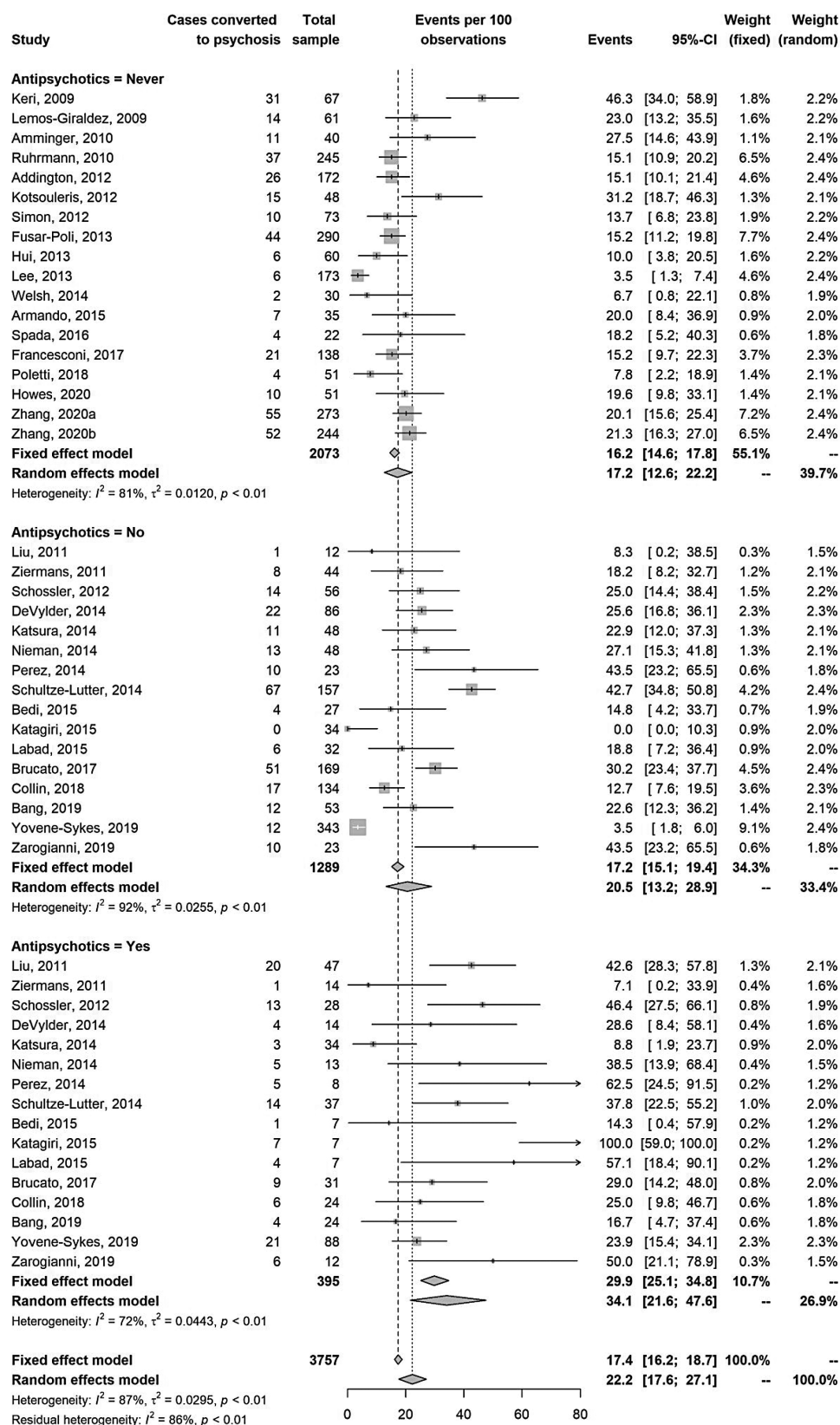


Figure 2. Forest plot.

Additional limitations should be considered. First, included studies are not primarily aimed to address the issue of pretest risk enrichment and rarely mentioned the steps of specific

recruitment strategy. Therefore, we opted for a clinically rational epidemiologic proxy, that is, we considered studies with baseline AP-exposed CHR-P as putatively indicative of a

Table 3. Main Results of the Meta-analysis of Studies on Transition to Psychosis in Sample of CHR-P Subjects With or Without Baseline Exposure to Antipsychotics

	k	n	Effect size	95% CI	Between Q	P	Q	P	tau ²	I ²	95% CI
Main analysis	16	395	29.9%	25.1%							
	16	1289	17.2%	15.1%							
	18	2073	16.2%	14.6%	39.7	<0.0001					
	16	395	34.1%	21.6%							
	16	1289	20.5%	13.2%							
	18	2073	17.2%	12.6%	8.8	0.0123	373.7	<.001	0.029	85.9%	82.2%
Sensitivity analysis	16	395	29.9%	25.1%							
	16	1289	17.2%	15.1%							
	16	395	34.1%	21.6%	29.0	<0.0001					
	16	1289	20.5%	13.2%							
	16	395	29.9%	25.1%	4.2	0.0396	271.9	<.001	0.0382	88.6%	85.0%
	18	2073	16.2%	14.6%	39.3	<0.0001					
	16	395	34.1%	21.6%							
	18	2073	17.2%	12.6%	8.8	0.0031	183.3	<.001	0.0327	82.0%	75.6%
	16	1289	17.2%	15.1%							
	18	2073	16.2%	14.6%	0.9	0.3369					
	16	1289	20.5%	13.2%							
	18	2073	17.2%	12.6%	0.7	0.3929	281.8	<.001	0.0179	88.6%	85.1%

Abbreviations: AP, antipsychotics; FE, fixed-effects model; k, number of studies; RE, random-effects model.

higher severity of the referred group (i.e., a mental state severe enough to justify AP prescription instead of psychosocial interventions only or non-AP medications such as antidepressant, anxiolytics, and mood-stabilizers). Similarly, we wished to analyze the impact of other non-AP drugs as well, since they might contribute to the baseline clinical presentation (e.g., non-AP medications can have an influence on reducing anxiety and mood oscillations as well as sleep disturbances), but only a few studies reported analyzable information (e.g., on the type and dose of medications).

Nonetheless, the results indicate that the pretest risk enrichment due to the heterogeneity of sampling strategies in CHR-P research is unlikely to justify the apparent negative prognostic effect of baseline antipsychotic exposure on the risk of transition to psychosis. This further highlights the importance of deconstructing this phenomenon (Raballo et al., 2021), which has paramount implications for the treatment of psychosis and the prevention or mitigation of its undesired long-term outcomes.

Conclusions

This meta-analysis further investigates the prognostic impact of baseline AP prescription in CHR-P help-seekers and tests whether pre-test risk enrichment could be implicated in the increased meta-analytic risk of transition that characterizes those CHR-P with ongoing AP at inclusion. The results indicate that transition prevalence in AP-naïve CHR-P is similar independently of whether they were enrolled in studies with rigorous exclusion criteria on AP exposure or more lenient ones (i.e., allowing the enrollment of CHR-P individuals under AP therapy). Therefore, pre-test risk enrichment is not implicated in the observed negative prognostic effect of baseline antipsychotic exposure in CHR-P. The results invite a further dissection of such phenomenon, possibly discriminating “pharmacologically attenuated first-episode psychosis” from those CHR-P in which AP prescription likely indexes a subgroup with the highest imminent risk of transition because of rapidly escalating severity.

The investigation of the potential negative prognostic effect of AP in young help-seekers is not merely an academic topic. Indeed, there is increasing awareness that AP are often prescribed in youth for conditions that did not receive approved indication, especially in youth from underserved communities (Olfson et al., 2015; Mackie et al., 2021). Moreover, little information exists so far about the long-term effects of antipsychotics on a still-developing brain (Harrison et al., 2012), and evidence on safety outcomes in children and adolescents is often indirect or based on just 1 study (Krause et al., 2018). Even if in some early-intervention services for CHR-P, AP are often used to treat comorbid disorders rather than emerging psychosis (Fusar-Poli et al., 2020; Kotlicka-Antczak et al., 2020), a proper investigation of their impact on the risk of transition to psychosis is mandatory before endorsing more specific indications on their use (Zhang et al., 2020) or disallowing tout court their prescription as per recommendation 1.2.3.2 of the current NICE guidelines.

Supplementary Materials

Supplementary data are available at *International Journal of Neuropsychopharmacology (IJNPPY)* online.

Acknowledgments

The study was motivated by enduring clinical and intellectual passion for the field. No funding was received for this work.

Statement of Interest

The authors have no conflict of interest to declare.

References

- Addington J, Piskulic D, Perkins D, Woods SW, Liu L, Penn DL (2012) Affect recognition in people at clinical high risk of psychosis. *Schizophr Res* 140:87–92.
- Akudjedu TN, Tronchin G, McInerney S, Scanlon C, Kenney JPM, McFarland J, Barker GJ, McCarthy P, Cannon DM, McDonald C, Hallahan B (2020) Progression of neuroanatomical abnormalities after first-episode of psychosis: a 3-year longitudinal sMRI study. *J Psychiatr Res* 130:137–151.
- Amminger GP, Schäfer MR, Papageorgiou K, Klier CM, Cotton SM, Harrigan SM, Mackinnon A, McGorry PD, Berger GE (2010) Long-chain omega-3 fatty acids for indicated prevention of psychotic disorders: a randomized, placebo-controlled trial. *Arch Gen Psychiatry* 67:146–154.
- Armando M, Pontillo M, De Crescenzo F, Mazzone L, Monducci E, Lo Cascio N, Santonastaso O, Pucciarini ML, Vicari S, Schimmelmann BG, Schultze-Lutter F (2015) Twelve-month psychosis-predictive value of the ultra-high risk criteria in children and adolescents. *Schizophr Res* 169:186–192.
- Bang M, Park JY, Kim KR, Lee SY, Song YY, Kang JI, Lee E, An SK (2019) Psychotic conversion of individuals at ultra-high risk for psychosis: the potential roles of schizotypy and basic symptoms. *Early Interv Psychiatry* 13:546–554.
- Barendregt JJ, Doi SA, Lee YY, Norman RE, Vos T (2013) Meta-analysis of prevalence. *J Epidemiol Community Health* 67:974–978.
- Bedi G, Carrillo F, Cecchi GA, Slezak DF, Sigman M, Mota NB, Ribeiro S, Javitt DC, Copelli M, Corcoran CM (2015) Automated analysis of free speech predicts psychosis onset in high-risk youths. *NPJ Schizophr* 1:15030.
- Borenstein M (2020) Research note: in a meta-analysis, the I2 index does not tell us how much the effect size varies across studies. *J Physiother* 66:135–139.
- Borenstein M, Hedges LV, Higgins JP, Rothstein HR (2010) A basic introduction to fixed-effect and random-effects models for meta-analysis. *Res Synth Methods* 1:97–111.
- Brucato G, Masucci MD, Arndt LY, Ben-David S, Colibazzi T, Corcoran CM, Crumbley AH, Crump FM, Gill KE, Kimhy D, Lister A, Schobel SA, Yang LH, Lieberman JA, Girgis RR (2017) Baseline demographics, clinical features and predictors of conversion among 200 individuals in a longitudinal prospective psychosis-risk cohort. *Psychol Med* 47:1923–1935.
- Chouinard G, Samaha AN, Chouinard VA, Peretti CS, Kanahara N, Takase M, Iyo M (2017) Antipsychotic-induced supersensitivity psychosis: pharmacological criteria and therapy. *Psychother Psychosom* 86:189–219.
- Collin G, Seidman LJ, Keshavan MS, Stone WS, Qi Z, Zhang T, Tang Y, Li H, Anteraper SA, Niznikiewicz MA, McCarley RW, Shenton ME, Wang J, Whitfield-Gabrieli S (2020) Functional connectome organization predicts conversion to psychosis in clinical high-risk youth from the SHARP program. *Mol Psychiatry* 25:2431–2440.
- DeVylder JE, Muchomba FM, Gill KE, Ben-David S, Walder DJ, Malaspina D, Corcoran CM (2014) Symptom trajectories and psychosis onset in a clinical high-risk cohort: the relevance of subthreshold thought disorder. *Schizophr Res* 159:278–283.
- Francesconi M, Minichino A, Carrión RE, Delle Chiaie R, Bevilacqua A, Parisi M, Rullo S, Bersani FS, Biondi M, Cadenhead K (2017) Psychosis prediction in secondary mental health services. A broad, comprehensive approach to the “at risk mental state” syndrome. *Eur Psychiatry* 40:96–104.

- Freeman MF, Tukey JW (1950) Transformations related to the angular and the square root. *Ann Math Stat* 4:607–611.
- Fusar-Poli P, Byrne M, Badger S, Valmaggia LR, McGuire PK (2013) Outreach and support in south London (OASIS), 2001–2011: ten years of early diagnosis and treatment for young individuals at high clinical risk for psychosis. *Eur Psychiatry* 28:315–326.
- Fusar-Poli P, Rutigliano G, Stahl D, Schmidt A, Ramella-Cravaro V, Hitesh S, McGuire P (2016) Deconstructing pretest risk enrichment to optimize prediction of psychosis in individuals at clinical high risk. *JAMA Psychiatry* 73:1260–1267.
- Fusar-Poli P, Raballo A, Parnas J (2017) What is an attenuated psychotic symptom? On the importance of the context. *Schizophr Bull* 43:687–692.
- Fusar-Poli P, De Micheli A, Signorini L, Baldwin H, Salazar de Pablo G, McGuire P (2020) Real-world long-term outcomes in individuals at clinical risk for psychosis: the case for extending duration of care. *Eclinicalmedicine* 28:100578.
- Harrison JN, Cluxton-Keller F, Gross D (2012) Antipsychotic medication prescribing trends in children and adolescents. *J Pediatr Health Care* 26:139–145.
- Higgins J, Thompson S, Deeks J, Altman D (2002) Statistical heterogeneity in systematic reviews of clinical trials: a critical appraisal of guidelines and practice. *J Health Serv Res Policy* 7:51–61. doi:10.1258/1355819021927674
- Ho BC, Andreasen NC, Ziebell S, Pierson R, Magnotta V (2011) Long-term antipsychotic treatment and brain volumes: a longitudinal study of first-episode schizophrenia. *Arch Gen Psychiatry* 68:128–137.
- Howes OD, Bonoldi I, McCutcheon RA, Azis M, Antoniades M, Bossong M, Modinos G, Perez J, Stone JM, Santangelo B, Veronese M, Grace A, Allen P, McGuire PK (2020) Glutamatergic and dopaminergic function and the relationship to outcome in people at clinical high risk of psychosis: a multimodal PET-magnetic resonance brain imaging study. *Neuropsychopharmacology* 45:641–648.
- Huedo-Medina TB, Sánchez-Meca J, Marín-Martínez F, Botella J (2006) Assessing heterogeneity in meta-analysis: Q statistic or I² index? *Psychol Methods* 11:193–206.
- Huhtaniska S, Jääskeläinen E, Hirvonen N, Remes J, Murray GK, Veijola J, Isohanni M, Miettunen J (2017) Long-term antipsychotic use and brain changes in schizophrenia - a systematic review and meta-analysis. *Hum Psychopharmacol* 32:e2574.
- Hui C, Morcillo C, Russo DA, Stochl J, Shelley GF, Painter M, Jones PB, Perez J (2013) Psychiatric morbidity, functioning and quality of life in young people at clinical high risk for psychosis. *Schizophr Res* 148:175–180.
- Jackson D, Turner R (2017) Power analysis for random-effects meta-analysis. *Res Synth Methods* 8:290–302.
- Katagiri N, Pantelis C, Nemoto T, Zalesky A, Hori M, Shimoji K, Saito J, Ito S, Dwyer DB, Fukunaga I, Morita K, Tsujino N, Yamaguchi T, Shiraga N, Aoki S, Mizuno M (2015) A longitudinal study investigating sub-threshold symptoms and white matter changes in individuals with an ‘at risk mental state’ (ARMS). *Schizophr Res* 162:7–13.
- Katagiri N, Pantelis C, Nemoto T, Tsujino N, Saito J, Hori M, Yamaguchi T, Funatogawa T, Mizuno M (2019) Longitudinal changes in striatum and sub-threshold positive symptoms in individuals with an ‘at risk mental state’ (ARMS). *Psychiatry Res Neuroimaging* 285:25–30.
- Katsura M, Ohmuro N, Obara C, Kikuchi T, Ito F, Miyakoshi T, Matsuoka H, Matsumoto K (2014) A naturalistic longitudinal study of at-risk mental state with a 2.4 year follow-up at a specialized clinic setting in Japan. *Schizophr Res* 158:32–38.
- Kéri S, Kiss I, Kelemen O (2009) Effects of a neuregulin 1 variant on conversion to schizophrenia and schizophreniform disorder in people at high risk for psychosis. *Mol Psychiatry* 14:118–119.
- Knapp G, Hartung J (2003) Improved tests for a random effects meta-regression with a single covariate. *Stat Med* 22:2693–2710.
- Kotlicka-Antczak M, Podgórski M, Oliver D, Maric NP, Valmaggia L, Fusar-Poli P (2020) Worldwide implementation of clinical services for the prevention of psychosis: the IEPA early intervention in mental health survey. *Early Interv Psychiatry* 14:741–750.
- Koutsouleris N, Davatzikos C, Bottlender R, Patschrek-Kliche K, Scheuerecker J, Decker P, Gaser C, Möller HJ, Meisenzahl EM (2012) Early recognition and disease prediction in the at-risk mental states for psychosis using neurocognitive pattern classification. *Schizophr Bull* 38:1200–1215.
- Krause M, Zhu Y, Huhn M, Schneider-Thoma J, Bighelli I, Chaimani A, Leucht S (2018) Efficacy, acceptability, and tolerability of antipsychotics in children and adolescents with schizophrenia: a network meta-analysis. *Eur Neuropsychopharmacol* 28:659–674.
- Labad J, Stojanovic-Pérez A, Montalvo I, Solé M, Cabezas Á, Ortega L, Moreno I, Vilella E, Martorell L, Reynolds RM, Gutiérrez-Zotes A (2015) Stress biomarkers as predictors of transition to psychosis in at-risk mental states: roles for cortisol, prolactin and albumin. *J Psychiatr Res* 60:163–169.
- Lee J, Rekhi G, Mitter N, Bong YL, Kraus MS, Lam M, Rapisarda A, Lee TS, Subramaniam M, Chong SA, Keefe RS (2013) The Longitudinal Youth at Risk Study (LYRIKS)—an Asian UHR perspective. *Schizophr Res* 151:279–283.
- Lemos-Giráldez S, Vallina-Fernández O, Fernández-Iglesias P, Vallejo-Seco G, Fonseca-Pedrero E, Paíno-Piñeiro M, Sierra-Baigrie S, García-Pelayo P, Pedrejón-Molino C, Alonso-Bada S, Gutiérrez-Pérez A, Ortega-Ferrández JA (2009) Symptomatic and functional outcome in youth at ultra-high risk for psychosis: a longitudinal study. *Schizophr Res* 115:121–129.
- Liu CC, Lai MC, Liu CM, Chiu YN, Hsieh MH, Hwang TJ, Chien YL, Chen WJ, Hua MS, Hsiung PC, Huang YC, Hwu HG (2011) Follow-up of subjects with suspected pre-psychotic state in Taiwan. *Schizophr Res* 126:65–70.
- Mackie TI, Schaefer AJ, Karpman HE, Lee SM, Bellonci C, Larson J (2021) Systematic review: system-wide interventions to monitor pediatric antipsychotic prescribing and promote best practice. *J Am Acad Child Adolesc Psychiatry* 60:76–104.e7.
- McGlashan TH, Zipursky RB, Perkins D, Addington J, Miller T, Woods SW, Hawkins KA, Hoffman RE, Preda A, Epstein I, Addington D, Lindborg S, Trzaskoma Q, Tohen M, Breier A (2006) Randomized, double-blind trial of olanzapine versus placebo in patients prodromally symptomatic for psychosis. *Am J Psychiatry* 163:790–799.
- McGorry PD, Yung AR, Phillips LJ, Yuen HP, Francey S, Cosgrave EM, Germano D, Bravin J, McDonald T, Blair A, Adlard S, Jackson H (2002) Randomized controlled trial of interventions designed to reduce the risk of progression to first-episode psychosis in a clinical sample with subthreshold symptoms. *Arch Gen Psychiatry* 59:921–928.
- McGorry PD, Nelson B, Phillips LJ, Yuen HP, Francey SM, Thampi A, Berger GE, Amminger GP, Simmons MB, Kelly D, Dip G, Thompson AD, Yung AR (2013) Randomized controlled trial

- of interventions for young people at ultra-high risk of psychosis: twelve-month outcome. *J Clin Psychiatry* 74:349–356.
- Moher D, Liberati A, Tetzlaff J, Altman DG; PRISMA Group (2009) Preferred reporting items for systematic reviews and meta-analyses: the PRISMA statement. *Bmj* 339:b2535.
- Nakata Y, Kanahara N, Iyo M (2017) Dopamine supersensitivity psychosis in schizophrenia: concepts and implications in clinical practice. *J Psychopharmacol* 31:1511–1518.
- National Institute for Health and Care Excellence (2014) Psychosis and schizophrenia in adults: prevention and management. Clinical Guideline 178. Retrieved from [nice.org.uk/guidance/cg178](https://www.nice.org.uk/guidance/cg178). Accessed 12 December 2020.
- Olfson M, King M, Schoenbaum M (2015) Treatment of young people with antipsychotic medications in the United States. *JAMA Psychiatry* 72:867–874.
- Perez VB, Woods SW, Roach BJ, Ford JM, McGlashan TH, Srihari VH, Mathalon DH (2014) Automatic auditory processing deficits in schizophrenia and clinical high-risk patients: forecasting psychosis risk with mismatch negativity. *Biol Psychiatry* 75:459–469.
- Poletti M, Pelizza L, Azzali S, Paterlini F, Garlassi S, Scazza I, Chiri LR, Gebhardt E, Pupo S, Andrea R (2018) Clinical high risk for psychosis in childhood and adolescence: findings from the 2-year follow-up of the ReARMS project. *Eur Child Adolesc Psychiatry* 28:957–971.
- Preti A, Cella M, Raballo A (2014) Preventing or masking psychosis? Possible unintended consequences of the ultra high-risk strategy. *Schizophr Res* 153:241–242.
- R Core Team (2020) R: A language and environment for statistical computing. Vienna, Austria: R Foundation for Statistical Computing. <https://www.R-project.org/>
- Raballo A, Poletti M (2019) Overlooking the transition elephant in the Ultra-High-Risk room: are we missing functional equivalents of transition to psychosis? *Psychol Med* 1–4. doi:10.1017/S0033291719003337. Epub ahead of print. PMID:31779736.
- Raballo A, Poletti M, Carpenter WT (2019) Rethinking the psychosis threshold in clinical high risk. *Schizophr Bull* 45:1–2.
- Raballo A, Poletti M, Preti A (2020a) Attenuated psychosis syndrome or pharmacologically attenuated first-episode psychosis? An undesirably widespread confounder. *JAMA Psychiatry* 77:1213–1214.
- Raballo A, Poletti M, Preti A (2020b) Meta-analyzing the prevalence and prognostic effect of antipsychotic exposure in clinical high-risk (CHR): when things are not what they seem. *Psychol Med* 50:2673–2681.
- Raballo A, Poletti M, Preti A (2021) Antipsychotic treatment in clinical high risk for psychosis: protective, iatrogenic or further risk flag? *Aust N Z J Psychiatry* 55:442–444.
- Ruhrmann S, Schultze-Lutter F, Salokangas RK, Heinimaa M, Linszen D, Dingemans P, Birchwood M, Patterson P, Juckel G, Heinz A, Morrison A, Lewis S, von Reventlow HG, Klosterkötter J (2010) Prediction of psychosis in adolescents and young adults at high risk: results from the prospective European prediction of psychosis study. *Arch Gen Psychiatry* 67:241–251.
- Sanfelici R, Dwyer DB, Antonucci LA, Koutsouleris N (2020) Individualized diagnostic and prognostic models for patients with psychosis risk syndromes: a meta-analytic view on the state of the art. *Biol Psychiatry* 88:349–360.
- Schlosser DA, Jacobson S, Chen Q, Sugar CA, Niendam TA, Li G, Bearden CE, Cannon TD (2012) Recovery from an at-risk state: clinical and functional outcomes of putatively prodromal youth who do not develop psychosis. *Schizophr Bull* 38:1225–1233.
- Schmidt SJ, Schultze-Lutter F, Schimmelmann BG, Maric NP, Salokangas RK, Riecher-Rössler A, van der Gaag M, Meneghelli A, Nordentoft M, Marshall M, Morrison A, Raballo A, Klosterkötter J, Ruhrmann S (2015) EPA guidance on the early intervention in clinical high risk states of psychoses. *Eur Psychiatry* 30:388–404.
- Schultze-Lutter F, Klosterkötter J, Ruhrmann S (2014) Improving the clinical prediction of psychosis by combining ultra-high risk criteria and cognitive basic symptoms. *Schizophr Res* 154:100–106.
- Schwarzer G, Carpenter JR, Rücker G (2015) Meta-analysis with R. New York: Springer-Verlag.
- Simon AE, Grädel M, Cattapan-Ludewig K, Gruber K, Ballinari P, Roth B, Umbricht D (2012) Cognitive functioning in at-risk mental states for psychosis and 2-year clinical outcome. *Schizophr Res* 142:108–115.
- Spada G, Molteni S, Pistone C, Chiappedi M, McGuire P, Fusar-Poli P, Balottin U (2016) Identifying children and adolescents at ultra high risk of psychosis in Italian neuropsychiatry services: a feasibility study. *Eur Child Adolesc Psychiatry* 25:91–106.
- van Os J, Guloksuz S (2017) A critique of the “ultra-high risk” and “transition” paradigm. *World Psychiatry* 16:200–206.
- van Tricht MJ, Nieman DH, Koelman JH, van der Meer JN, Bour LJ, de Haan L, Linszen DH (2010) Reduced parietal P300 amplitude is associated with an increased risk for a first psychotic episode. *Biol Psychiatry* 68:642–648.
- Veroniki AA, Jackson D, Viechtbauer W, Bender R, Bowden J, Knapp G, Kuss O, Higgins JP, Langan D, Salanti G (2016) Methods to estimate the between-study variance and its uncertainty in meta-analysis. *Res Synth Methods* 7:55–79.
- Viechtbauer W (2010) Conducting meta-analyses in R with the metaphor package. *J Stat Softw* 36:1–48.
- Welsh P, Tiffin PA (2014) The ‘at-risk mental state’ for psychosis in adolescents: clinical presentation, transition and remission. *Child Psychiatry Hum Dev* 45:90–98.
- Yin J, Barr AM, Ramos-Miguel A, Procyshyn RM (2017) Antipsychotic induced dopamine supersensitivity psychosis: a comprehensive review. *Curr Neuropharmacol* 15:174–183.
- Yoviene Sykes LA, Ferrara M, Addington J, Bearden CE, Cadenhead KS, Cannon TD, Cornblatt BA, Perkins DO, Mathalon DH, Seidman LJ, Tsuang MT, Walker EF, McGlashan TH, Woodberry KA, Powers AR 3rd, Ponce AN, Cahill JD, Pollard JM, Srihari VH, Woods SW (2020) Predictive validity of conversion from the clinical high risk syndrome to frank psychosis. *Schizophr Res* 216:184–191.
- Zarogianni E, Storkey AJ, Borgwardt S, Smieskova R, Studerus E, Riecher-Rössler A, Lawrie SM (2019) Individualized prediction of psychosis in subjects with an at-risk mental state. *Schizophr Res* 214:18–23.
- Zhang T, Xu L, Chen Y, Wei Y, Tang X, Hu Y, Li Z, Gan R, Wu G, Cui H, Tang Y, Hui L, Li C, Wang J (2020) Conversion to psychosis in adolescents and adults: similar proportions, different predictors. *Psychol Med* 1–9. doi:10.1017/S0033291720000756. Epub ahead of print. PMID:32248862.
- Ziermans TB, Schothorst PF, Sprong M, van Engeland H (2011) Transition and remission in adolescents at ultra-high risk for psychosis. *Schizophr Res* 126:58–64.