

RESEARCH

Open Access



The frequency of rare and monogenic diseases in pediatric organ transplant recipients in Italy

Tiziana Vaisitti^{1†}, Daniela Peritore^{2†}, Paola Magistrini³, Andrea Ricci², Letizia Lombardini², Enrico Gringeri⁴, Silvia Catalano⁵, Marco Spada⁶, Marco Sciveres⁷, Angelo Di Giorgio⁸, Giuseppe Limongelli⁹, Marisa Varrenti¹⁰, Gino Gerosa¹¹, Amedeo Terzi¹², Carlo Pace Napoleone¹³, Antonio Amodeo¹⁴, Luca Ragni¹⁵, Luca dello Strologo¹⁶, Elisa Benetti¹⁷, Iris Fontana¹⁸, Sara Testa¹⁹, Licia Peruzzi²⁰, Adele Mitrotti²¹, Serena Abbate²², Giorgia Comai²³, Eliana Gotti²⁴, Marco Schiavon²⁵, Massimo Boffini²⁶, Daniele De Angelis²⁷, Alessandro Bertani²⁸, Domenico Pinelli²⁹, Massimo Torre³⁰, Camilla Poggi³¹, Silvia Deaglio^{1,3*} , Massimo Cardillo² and Antonio Amoroso^{1,3} on behalf of Italian Pediatric Transplant Centers

Abstract

Background: Rare diseases are chronic and life-threatening disorders affecting < 1 person every 2,000. For most of them, clinical symptoms and signs can be observed at birth or childhood. Approximately 80% of all rare diseases have a genetic background and most of them are monogenic conditions. In addition, while the majority of these diseases is still incurable, early diagnosis and specific treatment can improve patients' quality of life. Transplantation is among the therapeutic options and represents the definitive treatment for end-stage organ failure, both in children and adults. The aim of this paper was to analyze, in a large cohort of Italian patients, the main rare genetic diseases that led to organ transplantation, specifically pointing the attention on the pediatric cohort.

Results: To the purpose of our analysis, we considered heart, lung, liver and kidney transplants included in the Transplant Registry (TR) of the Italian National Transplantation Center in the 2002–2019 timeframe. Overall, 49,404 recipients were enrolled in the cohort, 5.1% of whom in the pediatric age. For 40,909 (82.8%) transplant recipients, a disease diagnosis was available, of which 38,615 in the adult cohort, while 8,495 patients (17.2%) were undiagnosed. There were 128 disease categories, and of these, 117 were listed in the main rare disease databases. In the pediatric cohort, 2,294 (5.6%) patients had a disease diagnosis: of the 2,126 (92.7%) patients affected by a rare disease, 1,402 (61.1%) presented with a monogenic condition. As expected, the frequencies of pathologies leading to organ failure were different between the pediatric and the adult cohort. Moreover, the pediatric group was characterized, compared to the adult one, by an overall better survival of the graft at ten years after transplant, with the only exception of lung transplants. When comparing survival considering rare vs non-rare diseases or rare and monogenic vs rare non-monogenic

*Correspondence: silvia.deaglio@unito.it

[†]Tiziana Vaisitti and Daniela Peritore have contributed equally to this work.

¹ Department of Medical Sciences, University of Torino, Via Nizza 52, 10126 Torino, Italy

Full list of author information is available at the end of the article



conditions, no differences were highlighted for kidney and lung transplants, while rare diseases had a better survival in liver as opposed to heart transplants.

Conclusions: This work represents the first national survey analyzing the main genetic causes and frequencies of rare and/or monogenic diseases leading to organ failure and requiring transplantation both in adults and children.

Keywords: Rare diseases, Monogenic diseases, Organ transplantation, Transplant outcome

Background

Rare diseases are chronic and debilitating disorders affecting a small number of people compared to the general population, with small differences in definition. In the USA, a disease is considered to be rare when it affects < 200,000 people in the country, while in Europe the frequency is < 1 in 2,000 people (1, 2). In addition, there are geographical issues, as diseases that are generally rare can be frequent in a specific population. For example, the congenital nephrotic syndrome of the Finnish type is generally a rare disease, with the exception of Finland, where it occurs more frequently than in other parts of the world (3). Although each rare disease affects a small number of patients, globally considered they result in roughly 400 million patients.

Approximately 80% of all rare diseases are genetic in origin and most of them display a family distribution compatible with a monogenic origin (4, 5), even though in a proportion of disorders the causative gene remains elusive (5, 6). In this context, the recent evolution and broader application of sequencing technologies have revealed the genetic causes of novel rare disease and led to the identification of new variants responsible for previously defined disorders (7).

Rare diseases are often progressive conditions and for most of them clinical symptoms and signs can be observed at birth or childhood, being responsible for 35% of deaths in the first year of life and a significant cause of pediatric hospital admissions (8–10). Moreover, in a considerable percentage of cases, they are severe multisystem disorders displaying a range of phenotypes with consequent diagnostic and patient management challenges. Notably, the great majority (95%) of the 7,000–8,000 estimated rare diseases still lack FDA/EMA approved therapies (11), even though symptomatic treatment and medical care can improve patients' quality of life and extend life expectancy.

Transplantation is one of the options and represents the definitive treatment for end-stage organ failure, both in children and adults. The advent of new immunosuppressive drugs and the improvement of surgical techniques have contributed to its widespread diffusion, which in turn has led to an expansion of medical indications and an increased organ need (12, 13).

This heightened demand, together with a non-proportional raise in organs availability, impose the ethical need that “no organ can be used for futile transplants or burdened by a poor prognosis” (14, 15). In 2019, a total of 34,285 transplants were performed in Europe (21,235 kidney; 7,900 liver; 2,269 heart; 2,136 lung; 710 pancreas and 35 small bowel), which is however a small fraction when compared to the number of waiting listed patients in the same period (109,739 patients in total: 79,513 kidney; 16,007 liver; 6,940 heart; 4,883 lung; 2,313 pancreas and 83 small bowel) (16).

An open point in transplantation is the impact of rare diseases, specifically the ones with a genetic origin, since a significant percentage of end-stage organ failures are caused by monogenic pathologies (17, 18). Even though a wide variety of rare diseases benefit from solid organ transplantation, few reports address this topic from the genetic point of view.

The main aim of this paper is to analyze, in a large cohort of Italian patients, which are the main genetic diseases that lead to organ transplantation. Specifically, we aimed to shed light on pediatric transplantation, evaluating which among these pathologies lead more frequently to transplantation, the frequencies of rare and monogenic diseases and the organs involved. Finally, we analyzed the transplant outcome comparing patients with rare diseases—distinguishing even the most frequent monogenic ones – with those affected by rare non-monogenic diseases.

Results

Cohort selection

In the January 2002–December 2019 timeframe, the Transplant Registry (TR) of the National Transplantation Center database recorded 59,941 solid organ transplants, consecutively performed in Italy, of which 56,907 from cadaveric donors.

To the purpose of this study, due to low numbers, single pancreas ($n = 1,146$) and small bowel ($n = 55$) transplants were excluded from analysis, while re-transplanted patients were considered only once. Moreover, the cohort included recipients who underwent combined organ transplantation, both same organ (e.g., bi-pulmonary or bi-renal) and multi-organs (4,372 in total; Additional file 1: Table 1). Overall, our analysis, included kidney

Table 1 Transplanted organ category and main features of the cohort included in the study

	Transplanted organ				
	Kidney	Liver	Heart	Lung	Total
N. of transplants	25,407	17,207	4,868	1,922	49,404
Without diagnosis of the original disease	5,967	334	1,611	583	8,495
With diagnosis	19,440	16,873	3,257	1,339	40,909
Adults	18,553	15,836	2,981	1,245	38,615
Pediatrics	887	1,037	276	94	2,294
N. of pediatric disease categories	66	39	14	9	128
N. of pediatric diseases included in the rare disease catalogs	61	35	13	8	117
N. of pediatric patients diagnosed with a rare disease	840	920	273	93	2,126
N. of pediatric patients diagnosed with a monogenic disease	411	686	223	82	1,402

($n = 25,407$), liver ($n = 17,207$), heart ($n = 4,868$), and lung ($1,922$) transplants, resulting in an enrolled cohort of 49,404 recipients (Table 1). In 40,909 (82.8%) transplants, a definite diagnosis of disease leading to organ failure was available, of which 38,615 in the adult cohort and 2,294 in the pediatric one, while 8,495 patients (17.2%) were present in the TR without a diagnosis. Transplants were performed in 47 Italian Transplant Centers, of which 34 involved in pediatric activities (Additional file 1: Table 2).

We then focused the attention on the pediatric cohort, defined as patients who were less than 18 years old when enrolled in the waiting list, and included in the TR with a disease diagnosis ($n = 2,294$). The mean age at the time of enrollment in the TR was 7.15 years, IQR [1–13 years], with differences when considering the type of organ (heart: 7.84; liver: 4.06; lung: 13.04; kidney: 9.86), while the mean age at the time of transplantation was 7.99 years, IQR [1–14].

To understand the impact of rare monogenic pathologies in this cohort, we matched the diseases categories entered in the TR with those listed in the main rare diseases databases. Based on TR data entries, overall, there were 128 disease categories: 66 for kidney, 39 for liver, 14 for heart and 9 for lung (Table 1). Of them, 117

were listed in the main rare disease databases. Within the pediatric cohort, 2,126 out of 2,294 (92.6%) presented with a rare disease (840 kidney; 920 liver; 273 heart and 93 lung) of which 1,402 affected by a monogenic disease (411 kidney; 686 liver; 223 heart and 82 lung; Table 1).

Overall, the median follow-up from the transplant date was similar for the organs considered in the study: 6.73 years, IQR [2.48–10.57] for kidney; 5.39 years, IQR [1.23–8.87] for liver; 6.39 years, IQR [1.32–10.74] for heart; 3.6 years, IQR [0.39–5.62] for lung.

Transplants in the Italian pediatric and adult cohorts: state of the art

We then concentrated on patients with a clear diagnosis, looking at the distribution of transplants in the Italian cohort comparing the pediatric and adult groups, and taking in consideration i) transplanted organs, ii) main disease macro-categories that led to organ failure and iii) graft survival at 10 years after transplant. For the sake of clarity, this paragraph was divided in subparagraphs focused on the different transplanted organs.

Table 2 Heart transplant cohort and main disease categories leading to transplantation

Disease macro-category	Pediatrics (n. 276)	Adults (n. 2,981)	Total (n. 3,257)
	n. (%)	n. (%)	n. (%)
Cardiomyopathies	176 (63.8)	1,597 (53.6)	1,773 (54.4)
Congenital heart disease	84 (30.4)	82 (2.8)	166 (5.1)
Valve heart disease	5 (1.8)	161 (5.4)	166 (5.1)
Coronary disease	3 (1.1)	939 (31.5)	942 (28.9)
Primary lung hypertension	0 (0.0)	3 (0.1)	3 (0.1)
Other congenital pathologies	3 (1.1)	7 (0.2)	10 (0.3)
Other cardio-circulatory diseases	5 (1.8)	192 (6.4)	197 (6.0)

Heart

For 3,257 heart transplanted patients (66.9% of all heart transplants) a diagnosis was recorded in the TR; of them 276 were children (8.5%) and 2,981 adults (91.5%). While cardiomyopathies represented the first cause of disease both in children (63.8%) and adults (53.6%), coronary heart disease and valve heart disease were prevalent in adults (31.5% vs 1.1% and 5.4% vs 1.8%, respectively). On the other hand, children were significantly more affected by congenital heart disease than adults (30.4% vs 2.8%). It is also noteworthy that in the adult group, a significant proportion of patients were affected by other cardio-circulatory diseases (5.8%; Table 2).

When looking at graft survival, children had a better outcome than adults ($p < 0.001$, Fig. 1a).

Lung

Of the 1,922 lung transplants, 1,339 (69.7%) had a detailed disease diagnosis. The analysis therefore

focused on 1,245 adults (93%) and 94 pediatric cases (7%; Table 1). In children, in line with recent published data (19), the most frequent cause of organ failure was cystic fibrosis (79.8%), followed by primary pulmonary hypertension (7.4%), congenital disorders and other pneumopathies (4.3% each), which together accounted for 95.8% of cases. On the contrary, in adult patients, idiopathic pulmonary fibrosis was the most frequent cause of disease (35.9%), followed by cystic fibrosis (28.4%), emphysema/chronic obstructive pulmonary disease (18.4%) and other pneumopathies (11.6%). These 4 categories explained approximately 95% of cases (Table 3).

The success of lung transplantation was similar in pediatric and adult patients, with no significant differences at 10 years (Fig. 1b), even when excluding cystic fibrosis from the cohort (data not shown), in line with previously reported data (20).

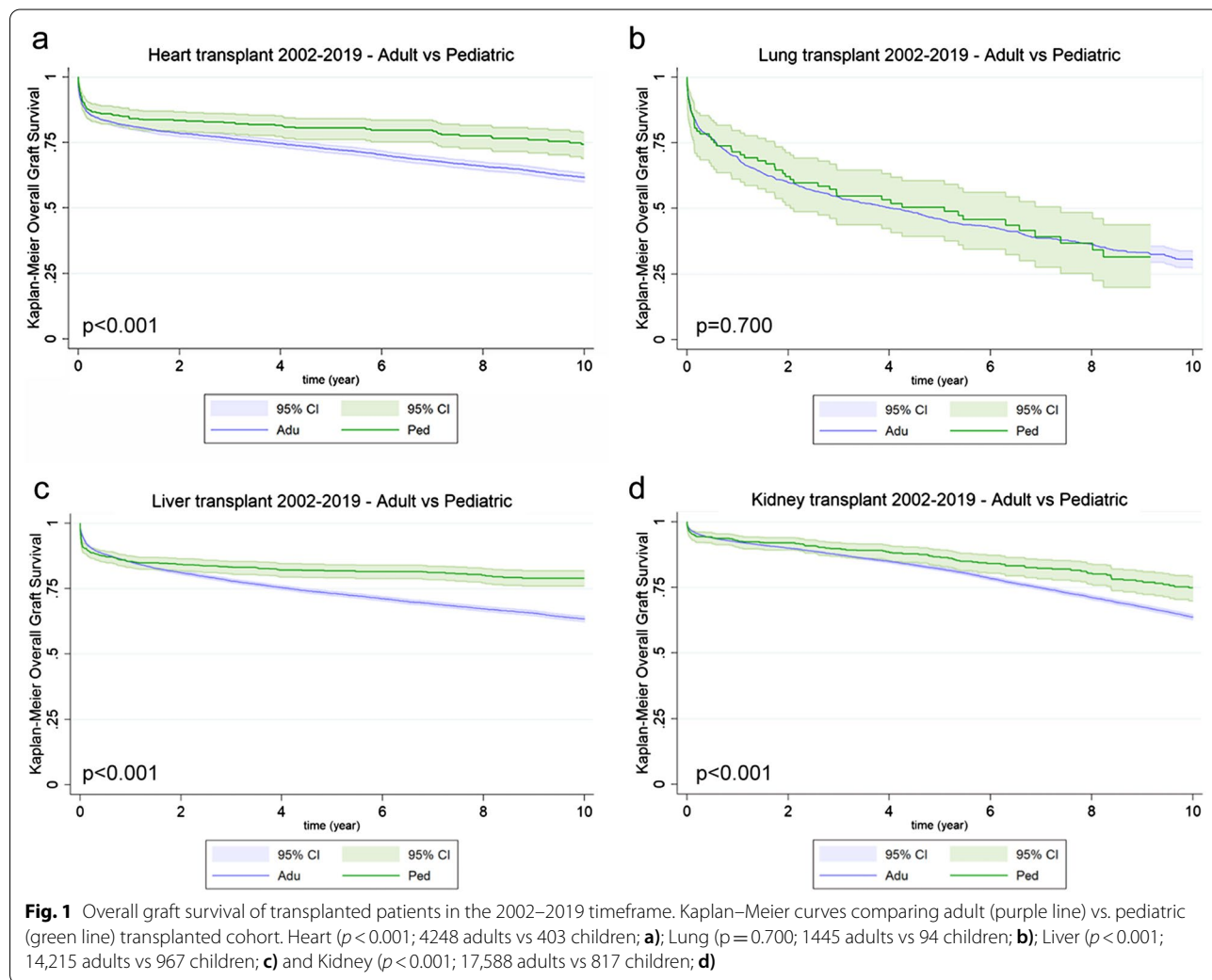


Table 3 Lung transplant cohort and main disease categories leading to transplantation

Disease macro-category	Pediatrics (n. 94) n. (%)	Adults (n. 1,245) n. (%)	Total (n. 1,339) n. (%)
Cystic fibrosis	75 (79.8)	354 (28.4)	429 (32.0)
Primary pulmonary hypertension	7 (7.4)	51 (4.1)	58 (4.3)
Other pneumopathies	6 (6.4)	148 (11.9)	154 (11.5)
Congenital disorders	4 (4.3)	1 (0.1)	5 (0.4)
Emphysema/Chronic obstructive pulmonary disease	1 (1.1)	229 (18.4)	230 (17.2)
Idiopathic pulmonary fibrosis	1 (1.1)	447 (35.9)	448 (33.5)
Congenital heart disease	0 (0.0)	4 (0.3)	4 (0.3)
Alpha-1 antitripsin deficiency	0 (0.0)	11 (0.9)	11 (0.8)

Liver

Out of the 17,207 liver recipients, 1,077 were performed in children (6.3%) and 16,873 patients (98.1% of cases) were registered in the TR with a diagnosis. There were 462 different disease definitions, which could be grouped into 9 diagnostic macro-categories, as shown in Table 4. Specifically, in the pediatric cohort, the most represented diseases were atresia of the biliary tract (41.8%), other hepatopathies (17.3%), metabolic diseases (12.2%), cholestatic cirrhosis (11.7%), and neoplasia (8%), accounting for 94% of all cases. On the contrary, in adults, the most frequent diagnoses were non-cholestatic cirrhosis (37.6%) and liver neoplasia (28.4%), followed by alcoholic cirrhosis (10.6%), cholestatic cirrhosis and cholestatic diseases (5.4%), other liver diseases (5.5%), accounting for 90% of all cases (Table 4).

When comparing the probability of graft success between the pediatric and adult cohort, the former presented an overall better survival than adults ($p < 0.001$; Fig. 1c).

Kidney

Lastly, we analysed kidney transplants with 25,407 patients included in the TR. 19,440 recipients were registered with a disease diagnosis (76.5%), of which the great majority (95.4%) were adults with only 887 pediatric patients (4.6%; Table 1). There were 568 different disease definitions, which could be grouped into 13 macro-categories (Table 5). In pediatric transplants, congenital familial nephro- and uropathies were the most represented pathologies (75.5% vs 2% in adults), followed by glomerular (10%) and cystic (4.8%) nephropathies. On the other hand, the most frequent pathologies in adult kidney transplants were glomerular nephropathies (40.1%), followed by cystic nephropathies (18.8%), other renal disorders (11%), hypertensive nephrosclerosis (8.7%), diabetic nephropathy (7.6%) and tubular and interstitial nephropathies (7.1%), the latter 3 macro-categories being almost absent in the pediatric cohort.

Kaplan–Meier curves of the overall graft survival referred to kidney and comparing the pediatric and adult cohorts, showed that the former one was characterized by a better outcome ($p < 0.001$; Fig. 1d).

Table 4 Liver transplant cohort and main disease categories leading to transplantation

Disease macro-category	Pediatrics (n. 1,037) n. (%)	Adults (n. 15,836) n. (%)	Total (n. 16,873) n. (%)
Hepatopathies from atresia of the biliary tract	433 (41.8)	32 (0.2)	465 (2.8)
Metabolic diseases	126 (12.2)	350 (2.2)	476 (2.8)
Cholestatic cirrhosis and other cholestatic liver diseases	121 (11.7)	857 (5.4)	978 (5.8)
Neoplasia	83 (8.0)	4,505 (28.4)	4,588 (27.2)
Acute liver necrosis	44 (4.2)	404 (2.6)	448 (2.7)
Other non-cholestatic cirrhosis	43 (4.1)	5,950 (37.6)	5,993 (35.5)
HBV/HCV related cirrhosis	5 (0.5)	1,116 (7.0)	1,121 (6.6)
Alcoholic cirrhosis	0 (0.0)	1,686 (10.6)	1,686 (10.0)
Other hepatopathies	182 (17.5)	936 (5.9)	1,118 (6.6)

Table 5 Kidney transplant cohort and main disease categories leading to transplantation

Disease macro-category	Pediatrics (n. 887) n. (%)	Adults (n. 18,553) n. (%)	Total (n. 19,440) n. (%)
Congenital familial rare and metabolic based nephro- and uro-pathies	670 (75.5)	378 (2.0)	721 (3.7)
Glomerular nephropathies	89 (10.0)	7,438 (40.1)	7,527 (38.7)
Cystic nephropathies	43 (4.8)	3,493 (18.8)	3,536 (18.2)
Acute renal insufficiency	13 (1.5)	43 (0.2)	56 (0.3)
Other familial nephropathies	12 (1.4)	227 (1.2)	239 (1.2)
Different nephro-vasculopathic and nephrosclerosis syndromes	7 (0.8)	389 (2.1)	396 (2.0)
Kidney neoplasia	2 (0.2)	53 (0.3)	55 (0.3)
Hypertensive nephrosclerosis	1 (0.2)	1,610 (8.7)	1,611 (8.3)
Tubular and interstitial nephropathies	0 (0.0)	1,326 (7.1)	1,326 (6.8)
Diabetic nephropathy	0 (0.0)	1,409 (7.6)	1,409 (7.2)
Non-cholestatic cirrhosis	0 (0.0)	2 (0.0)	2 (0.0)
Other hepatopathies	3 (0.3)	1 (0.0)	4 (0.0)
Other kidney disorders	47 (5.3)	2,184 (11.8)	2,558 (13.2)

Rare and monogenic diseases frequencies in pediatric transplanted patients and their impact on grafts survival

In the last section of the work, we focused selectively on the pediatric cohort of transplanted patients, included in the TR with a clear diagnosis, with the aim of defining the frequencies of rare and/or monogenic diseases that were causative of organ failure, ultimately requiring organ transplantation. For the former group of pathologies, we firstly matched the main databases reporting these diseases to obtain a full list for each organ. Rare diseases are indicated with the Orphanet code. The diagnoses included in the TR were then classified according to disease categories in rare and rare monogenic diseases. As a last inquiry, we compared graft survival in patients affected by i) rare vs non-rare diseases, ii) rare monogenic vs rare non-monogenic diseases and finally iii) considering the most represented disease macro-categories for each organ.

13 out of 14 diseases categories responsible for heart transplantation in children were included in the rare disease catalogues, accounting for almost all pediatric patients with heart transplantation (273 out of 276, 98.9%), with 223 patients (82%) diagnosed with a pathology belonging to monogenic diseases. The only condition found in pediatric cases that is not considered a rare disease was dilated heart disease on ischemic basis (3 patients). However, it is not possible to exclude with certainty that even in these cases a rare/monogenic pathology was involved, possibly due to disorders of lipid metabolism. The most represented pathology was dilated cardiomyopathy (42.8% of cases), followed by congenital heart disease on a genetic basis (30.8%), hypertrophic

cardiomyopathy (8.3%) and restrictive cardiomyopathy (7.6%). Alone, these 4 disease categories represented 89% of pediatric transplants (Table 6).

If we distinguish pediatric transplants according to whether they have been performed because of a rare vs a non-rare disease, we noted that the probability of success was significantly better for transplants performed in children without rare diseases ($p < 0.05$; Fig. 2a). On the contrary, transplants performed because of a monogenic disease presented a significantly better chance of success ($p < 0.05$; Fig. 2b). Finally, when considering the outcome of the transplant taking into account the 2 most represented groups of cardiac diseases, congenital pathologies and cardiomyopathies, no significant differences were highlighted between them, even though they showed a significant better profile compared to other cardiac pathologies ($p < 0.01$; Fig. 2c).

When analysing in detail the 9 different definitions of disease found in lung transplanted patients and classifying them according to rare diseases, we noted that almost all patients (98.9%) were affected by rare diseases, of whom 86% of monogenic origin. Cystic fibrosis was the leading cause of lung failure, affecting 80.6% of the whole cohort. The second most frequent diagnosis was represented by pulmonary arterial hypertension, a rare disease of non-monogenic nature, counting 7.5% of patients.

(Table 7).

Since more than 50% of pediatric transplants were performed in recipients with cystic fibrosis, which is a rare and monogenic disease, further evaluations in relation to the outcome of pediatric transplants were strongly influenced by this single category. Moreover, due to an almost

Table 6 Diagnostic categories in heart transplanted pediatric cohort and distribution between rare and monogenic diseases

Diagnosis	ORPHA code	Tx (n. 276)	Rare diseases (n. 273) n. (% respect to total Tx)	Monogenic diseases (n. 223) n. (% respect to rare diseases)
Complication following organ transplant	306,644	1	1 (0.4)	
Dilated cardiomyopathy	217,604	118	118 (42.8)	113 (41.4)
Dilated cardiomyopathy on ischemic basis		3		
Ebstein malformation	1880	1	1 (0.4)	1 (0.4)
Familial isolated arrhythmogenic dysplasia of the right ventricle	217,656	1	1 (0.4)	1 (0.4)
Genetic heart disease	271,853	85	85 (30.8)	84 (31.1)
Hypertrophic cardiomyopathy	217,569	23	23 (8.3)	
Hypoplastic left heart	2248	2	2 (0.7)	2 (0.7)
Myocarditis	§	9	9 (3.3)	
Radiation-induced pathology	521,132	5	5 (1.8)	
Restrictive cardiomyopathy	217,632	21	21 (7.6)	21 (7.6)
Shone Complex	99,063	1	1 (0.4)	1 (0.4)
Severe aortic insufficiency	99,094	1	1 (0.4)	
Valvular heart disease	228,410	5	5 (1.8)	

Tx: transplants;

§ : included in the NORD database (<https://rarediseases.org/rare-diseases/myocarditis/>)

complete overlap between rare and monogenic diseases also in the remaining categories, we did not perform survival analyses. And indeed, the overall survival between cystic fibrosis diagnosed patients and all the other disease categories showed no differences ($p=0.653$; Fig. 3), in line with previously reported data (19).

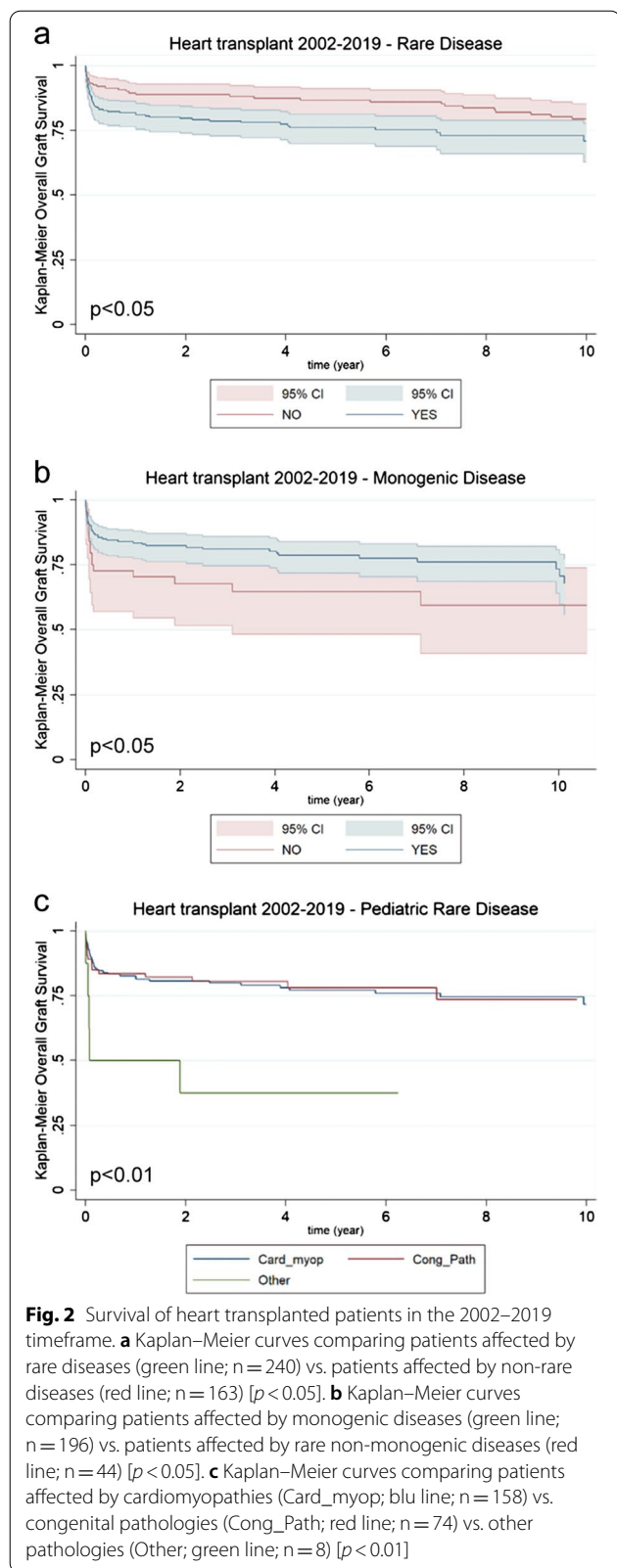
Regarding liver pediatric transplants, there were 39 different definitions of diseases available in the TR, with the great majority included in the catalogues of rare diseases (36 out of 39 disease categories, accounting for 90% of patients) and 17 out of 39 being of monogenic origin, including almost 71% of patients. Analyzing the distribution of these diagnoses, it was noted that the most frequent were congenital biliary disease/extrahepatic biliary atresia (41.1% of patients), cholestatic diseases (11.5%), metabolic diseases, including cystic fibrosis and primary hyperoxaluria (9.8%), Alagille syndrome (4.5%), and Wilson disease (1.7%), which all together constituted approximately 70% of all cases (Table 8). The distribution in this cohort is slightly a bit different from the ones previously reported by Fagioli and colleagues, where the dominant phenotype was represented by Alagille syndrome (21).

Pointing the attention on the graft survival of pediatric liver transplants, those performed in patients with rare diseases showed a significantly better outcome compared to patients with common diseases ($p<0.005$; Fig. 4a). On the contrary, no differences were noted when dividing them based on the presence or absence of a monogenic disease ($p=0.87$; Fig. 4b). When plotting graft survival according to the main diagnostic categories, globally

considered, no statistically significant differences were highlighted ($p=0.11$). However, a trend towards a better outcome could be noted for metabolic diseases, biliary atresia, and cholestatic diseases. On the contrary, transplants performed because of neoplasia and cirrhosis showed a worse overall survival (Fig. 4c).

Lastly, we looked at kidney transplants in the pediatric cohort. The list contained 66 different disease categories, most of which ($n=62$) included in the catalogues of rare diseases. Overall, 94.7% of transplanted patients had a diagnosis of rare disease and half of these ones (46.3%) had a monogenic origin. The most represented diseases were renal or urinary tract malformation (36.9%), followed by focal segmental glomerulosclerosis (8.1%), nephronophthisis (8%), autosomal recessive polycystic kidney disease (4.8%), glomerulonephritis (4.3%), congenital nephrotic syndrome Finnish type (3.8%), Alport syndrome (3%) and hemolytic uremic syndrome (2.9%). It is worthy to note that monogenic diseases might be underestimated, as monogenic forms of renal or urinary tract malformation and glomerulonephritis are known (Table 9).

In pediatric kidney transplants and similar to what observed for lung transplants, no significant differences were highlighted when comparing rare vs common diseases ($p=0.36$; Fig. 5a) or when considering monogenic vs non-monogenic diseases ($p=0.33$; Fig. 5b) at ten years after transplant. However, when plotting overall graft survival taking in consideration the most representative disease macro-categories, some significant differences



appeared, with glomerular and congenital nephropathies showing the best outcome as opposed to renal and urinary tract abnormalities and focal segmental glomerulosclerosis ($p < 0.01$; Fig. 5c).

Discussion

An ample body of literature comes out when surfing PubMed using “transplantation” or “organ transplants” as search keywords. Different aspects are addressed and discussed, mainly referring to clinical and surgical topics, as well as to immunological issues. In the last year, even the impact of COVID-19 has represented a “hot topic” in transplantation (22, 23). In this paper, solid organ transplants are addressed and investigated from a genetic perspective, which is a relatively unexplored field (17, 18, 24), thus strengthening the novelty of this work. We carried out a national survey, based on data included in the Italian Transplant Registry (TR), by focusing on disease causes that lead to organ failure thus finally requiring transplants. Specifically, we reported the Italian “state of the art”, considering both the adult and pediatric cohorts, with the aim of comparing these two subsets of patients, highlighting the percentage of undiagnosed patients included in the TR, and describing the frequency and distribution of rare and monogenic diseases in transplants recipients. Several points of discussion can be raised from this analysis.

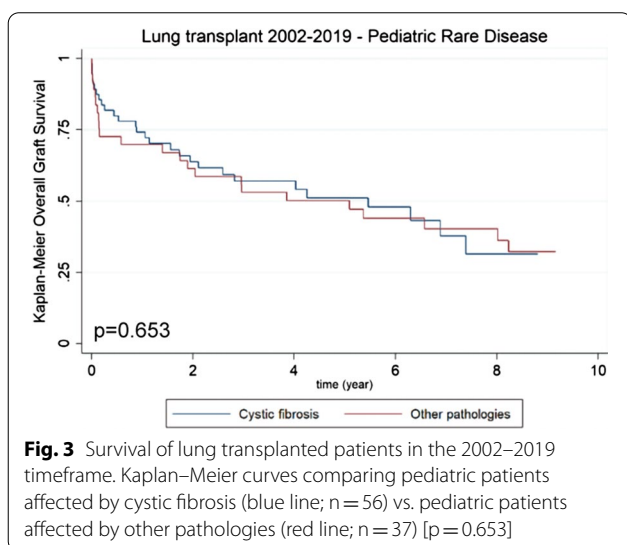
The first observation that comes to light concerns the percentage of patients included in the TR without a disease diagnosis. Considering all transplants, a diagnosis is recorded in 40,909 (82.8%) resulting in a 17.8% of transplanted patients who remain undiagnosed, in line with previous data (25–27). When dividing by organs, heart and lung transplants present with the higher percentage of undiagnosed patients ($n = 1,611$, 33.1% and $n = 583$, 30.3%, respectively), followed by kidney transplants ($n = 5,967$, 23.5%), while only a minority of liver transplanted patients were without a diagnosis ($n = 334$, 1.9%). A possible explanation for the higher percentage of diagnosed patients in TR for liver transplants compared to the other organs may rely on the structure of the TR, allowing for liver, and only for this organ, three different levels of diagnostic information to be recorded.

The second observation regards the quote of diagnosed pediatric transplants (2,294 patients in total, 5.6% of all diagnosed transplanted patients). Depending on the organ considered, the percentage of diagnosed patients varies, being the highest for heart (8.5%), followed by liver (6.1%) and lung (7.0%). On the contrary, kidney presented the lower quote of diagnosed patients (4.5%). It is noteworthy that the frequencies and distribution of pathologies leading to organ transplants are different between the adult and pediatric cohorts, especially when

Table 7 Diagnostic categories in lung transplanted pediatric cohort and distribution between rare and monogenic diseases

Diagnosis	ORPHA code	Tx (n. 94)	Rare diseases (n. 93) n. (% respect to total Tx)	Monogenic diseases (n. 82) n. (% respect to rare diseases)
Bronchiolitis obliterans	1303	2	2 (2.1)	
Chronic obstructive pulmonary disease		1		
Cystic fibrosis	586	75	75 (80.6)	75 (80.6)
Eisenmenger syndrome	97,214	4	4 (4.3)	4 (4.3)
Idiopathic pulmonary fibrosis	2032	1	1 (1.1)	1 (1.1)
Interstitial lung disease due to ABCA3 deficiency	440,402	1	1 (1.1)	1 (1.1)
Langerhans cell histiocytosis	389	1	1 (1.1)	1 (1.1)
Pulmonary arterial hypertension	182,090	7	7 (7.5)	
Rejection/Complication after organ transplantation	306,644	2	2 (2.1)	

Tx: transplants



analysing kidney and liver transplants. Moreover, the quote of pediatric kidney transplants is lower compared to the other organs, when taking in consideration the overall number of transplants for each organ. This lower percentage is probably linked to different factors: firstly, kidney diseases may take a longer period of time to lead to organ failure. In line with this hypothesis, the mean age of enrollment in the TR is higher for kidney patients (9.86 years) compared to heart and liver ones (7.84 and 4.06 years, respectively). Secondly, kidney transplant does not represent a lifesaving treatment as other options can temporarily supply to organ dysfunction.

The third point of discussion is centred on the disease categories within the pediatric cohort. Overall, we listed 128 different diseases, with kidney transplants contributing the most to this catalogue (51.5%), followed by liver (30.5%), heart (10.9%) and lung (7.0%). However, it must be noted that the number of pediatric patients with diagnosis who underwent either a heart

or lung transplant is relatively small. Interestingly, out of 128 disease categories identified, 117 are included in the main catalogues of rare diseases, meaning that 92.7% of the pediatric cohort is affected by this type of diseases. This proportion varies slightly depending on the organ involved, being higher for thoracic organ transplants (98.9%) compared to abdominal ones (94.7% for kidney and 88.7% for liver). An interesting result that has been highlighted by this survey is that a considerable percentage (65.9%) of the pediatric patients presenting with a rare disease is affected by a monogenic condition. As expected, lung, heart and liver transplants presented the higher quote of monogenic diseases (88%, 81.7% and 74.6%, respectively) at variance with kidney transplants, where <50% of patients are affected by a disease of monogenic origin. This significant difference can be explained by the fact that within kidney, some categories of rare diseases may include a quote of monogenic pathologies (e.g., CAKUT, glomerulonephritis) thus leading to an underestimation of the real percentage. The distribution of affected patients seems to be independent of the sex in heart and liver transplants, while a clear association was present for lung and kidney ones. In the first case, there was a prevalence (63.8%) of female patients likely reflecting the fact that the great majority of the cohort was affected by cystic fibrosis. Several papers in literature suggest that a sex dichotomy exists for this disease, despite improved therapies, with female patients experiencing a slightly worse prognosis, both in terms of mortality and susceptibility to chronic infections (28–31). On the contrary, for kidney transplants, there was a prevalence of male subjects (61.8%). In part, these data can be explained by the fact that some diseases are characterized by an X-linked mode of inheritance (e.g., Alport syndrome) thus affecting male subjects. Beside the genetic aspect, these data are in line with evidence

Table 8 Diagnostic categories in liver transplanted pediatric cohort and distribution between rare and monogenic diseases

Diagnosis	ORPHA code	Tx (n. 1,037)	Rare diseases (n. 904) n. (% respect to total Tx)	Monogenic diseases (n. 689) n. (% respect to rare diseases)
Acute liver failure—Fulminant or subfulminant hepatic failure		53		
Alagille syndrome	52	47	47 (4.5)	47 (5.2)
Alpha-1 antitrypsin deficiency	60	11	11 (1.1)	11 (1.2)
Angiosarcoma (neoplasia)	263,413	1	1 (0.1)	
Budd-Chiari syndrome	131	5	5 (0.5)	5 (0.5)
Caroli disease	53,035	6	6 (0.6)	
Cholestatic disease—Primary biliary cirrhosis	186	17	17 (1.6)	
Cholestatic disease—Primary sclerosing cholangitis	171	42	42 (4.1)	
Cholestatic disease—Other		27		
Cholestatic disease—Secondary biliary cirrhosis	447,774	29	29 (2.9)	
Cirrhosis—Autoimmune	779	8	8 (0.8)	
Cirrhosis—Other		10		
Cirrhosis—Virus related		11		
Congenital biliary disease—Extrahepatic biliary atresia	498,345	426	426 (41.1)	426 (47.1)
Crigler-Najjar syndrome type 1	79,234	4	4 (0.4)	4 (0.4)
Cryptogenic cirrhosis		24		
Epithelioid hemangioendothelioma (neoplasia)	157,791	3	3 (0.3)	
Familial hypercholesterolemia	391,665	1	1 (0.1)	
Glycogen storage disease	79,201	6	6 (0.6)	6 (0.6)
GVHD	99,921	3	3 (0.3)	
Hemochromatosis	220,489	5	5 (0.5)	5 (0.5)
Hepatic trauma		1		
Hepatoblastoma (neoplasia)	449	55	55 (5.3)	
Hepatocellular (neoplasia)	88,673	19	19 (1.8)	
Hepatocellular carcinoma—Fibrolamellar (neoplasia)	401,920	2	2 (0.2)	
Isolated Congenital hepatic fibrosis	485,426	19	19 (1.8)	19 (2.1)
Langherans cell histiocytosis	389	3	3 (0.3)	
Metabolic disease—Cystic fibrosis	586	17	17 (1.6)	17 (1.9)
Metabolic disease—Others	91,088	49	49 (4.7)	49 (5.4)
Metabolic disease—Primary hyperoxaluria	416	25	25 (2.4)	25 (2.8)
Metabolic disease—Tyrosinemia	882/28378/ 68,723	11	11 (1.1)	11 (1.2)
Methylmalonic acidemia with homocystinuria, type cb1D	79,283	3	3 (0.3)	3 (0.3)
Neonatal intrahepatic cholestasis caused by citrin deficiency	247,598	1	1 (0.1)	1 (0.1)
Other neoplasia		7		
Other rare liver diseases	#	26	26 (2.5)	
Polycystic liver disease	2924	6	6 (0.6)	6 (0.6)
Progressive familial intrahepatic cholestasis	172	36	36 (3.5)	36 (4.0)
Wilson disease	905	18	18 (1.7)	18 (2.0)

Tx: transplants; GVHD: graft-versus-host disease; # several ORPHA codes

reported in literature showing that worldwide there is a milder male predominance among kidney transplant patients (32, 33).

When considering the graft survival, as expected (34), a clear statistically significant difference can be highlighted

comparing the pediatric and adult cohorts, with the former group showing the best survival at ten years after transplants. The only exception, but in line with reported data (20, 35), is represented by lung, probably in part as a consequence of the over-representation of cystic fibrosis

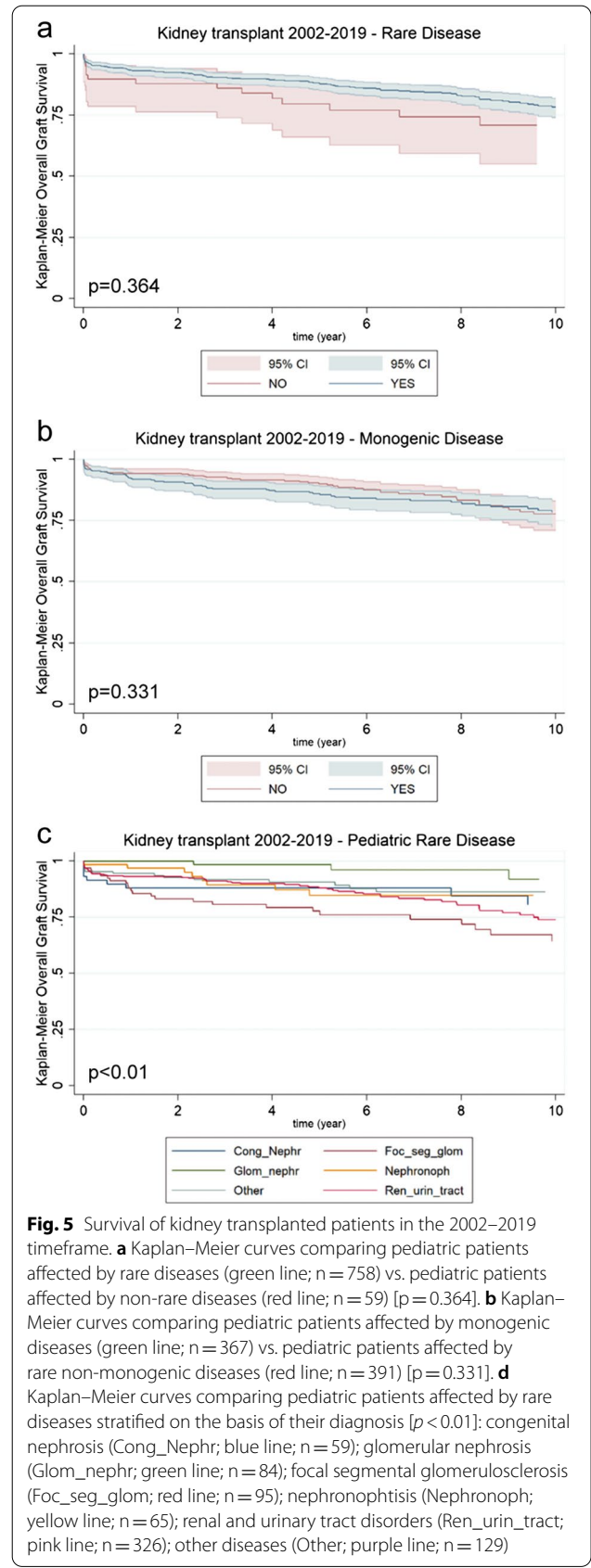
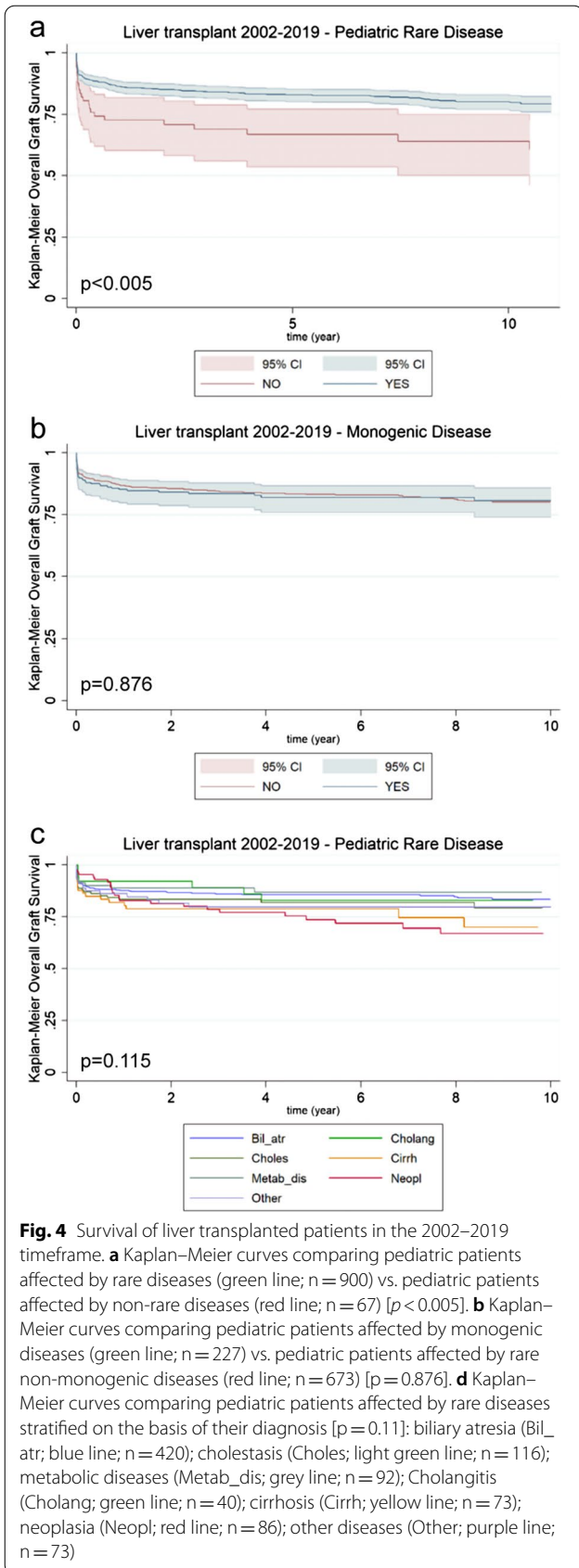


Table 9 Diagnostic categories in kidney transplanted pediatric cohort and distribution between rare and monogenic diseases

Diagnosis	ORPHA code	Tx (n. 887)	Rare diseases (n. 837) n. (% in respect to total Tx)	Monogenic diseases (n. 413) n. (% respect to rare diseases)
Alport syndrome	63	27	27 (3.0)	27 (3.3)
Autosomal dominant tubulointerstitial kidney disease	34,149	3	3 (0.3)	3 (0.4)
Autosomal dominant tubulointerstitial kidney disease due to HNF1B	93,111	1	1 (0.1)	1 (0.1)
Autosomal dominant tubulointerstitial kidney disease due to UMOD mutation	88,950	1	1 (0.1)	1 (0.1)
Autosomal recessive polycystic kidney disease	731	43	43 (4.8)	43 (5.2)
Bardet-Biedl syndrome	110	4	4 (0.5)	4 (0.5)
Branchiootorenal syndrome	107	5	5 (0.6)	5 (0.6)
Caroli Disease	53,035	1	1 (0.1)	1 (0.1)
CHARGE syndrome	138	1	1 (0.1)	1 (0.1)
Congenital nephrotic syndrome	97,556	2	2 (0.2)	1 (0.1)
Congenital nephrotic syndrome type 4	656	6	6 (0.7)	6 (0.7)
Congenital nephrotic syndrome Finnish type	839	34	34 (3.8)	34 (4.1)
Congenital nephrotic syndrome type 2	656	17	17 (1.9)	17 (2.1)
Congenital nephrotic syndrome type 3	656	2	2 (0.2)	2 (0.2)
Cranioectodermal dysplasia	1515	1	1 (0.1)	1 (0.1)
Cystinosis	213	16	16 (1.8)	16 (1.9)
Dense deposit disease	93,571	1	1 (0.1)	
Denys-Drash syndrome	220	6	6 (0.7)	6 (0.7)
Ellis-Van Creveld syndrome	289	1	1 (0.1)	1 (0.1)
Fabry disease	324	1	1 (0.1)	1 (0.1)
Familial vesicoureteral reflux	289,365	12	12 (1.4)	12 (1.4)
Fanconi syndrome	3337	1	1 (0.1)	1 (0.1)
Fechtner syndrome	1984	1	1 (0.1)	1 (0.1)
Focal segmental glomerulosclerosis	656	72	72 (8.1)	72 (8.7)
Frasier syndrome	347	2	2 (0.2)	2 (0.2)
Glomerulonephritis	93,559	38	38 (4.3)	
Goodpasture disease	375	1	1 (0.1)	
Granulomatosis with polyangiitis	900	1	1 (0.1)	1 (0.1)
Hemolytic uremic syndrome	544,458	26	26 (2.9)	26 (3.1)
Henoch-Schonlein purpura	761	1	1 (0.1)	
Hepatorenal syndrome		3		
Hereditary endotheliopathy-retinopathy-nephropathy-stroke (HERNS) syndrome	63,261	1	1 (0.1)	1 (0.1)
Hypertensive nephrosclerosis		1		
Hypoplastic kidneys	93,101	10	10 (1.1)	
IgA nephropathy	761	8	8 (0.9)	
Jeune syndrome	474	1	1 (0.1)	1 (0.1)
Joubert syndrome with oculorenal anomalies	2318	13	13 (1.5)	13 (1.6)
Leopard syndrome	500	1	1 (0.1)	1 (0.1)
Lowe oculocerebrorenal syndrome	534	2	2 (0.2)	2 (0.2)
Lupus nephritis	300,345	8	8 (0.9)	
Megaureter syndrome with oculorenal anomalies	238,637	1	1 (0.1)	
Membranous nephropathy	97,560	3	3 (0.3)	
Methylmalonic acidemia	293,355	2	2 (0.2)	2 (0.2)
Microscopic polyangiitis	727	3	3 (0.3)	
Mitochondrial DNA-associated Leigh syndrome	255,210	2	2 (0.2)	2 (0.2)
Nail-patella syndrome	2614	1	1 (0.1)	1 (0.1)

Table 9 (continued)

Diagnosis	ORPHA code	Tx (n. 887)	Rare diseases (n. 837) n. (% in respect to total Tx)	Monogenic diseases (n. 413) n. (% respect to rare diseases)
Neonatal cortical necrosis		13		
Nephronophthisis	655	71	71 (8.0)	71 (8.6)
Nephropathy due to chemotherapy		1		
Neurogenic bladder	84,085	2	2 (0.2)	
Other nephropathy		31		
Primary hyperoxaluria type 1	93,598	14	14 (1.6)	14 (1.7)
Primary hyperoxaluria type 2	93,599	1	1 (0.1)	1 (0.1)
Prune belly syndrome	2970	9	9 (1.0)	9 (1.1)
Renal agenesis	411,709	7	7 (0.8)	
Renal coloboma syndrome	1475	3	3 (0.3)	3 (0.4)
Renal or urinary tract malformation	93,545	327	327 (36.9)	
Renal-hepatic-pancreatic dysplasia-Dandy-Walker cysts syndrome	3032	1	1 (0.1)	1 (0.1)
Schimke immune-osseous dysplasia	1830	1	1 (0.1)	1 (0.1)
Sirenomelia	3169	1	1 (0.1)	1 (0.1)
Split hand urinary anomalies spina bifida (Czeizel-Lozonci syndrome)		2437	4	4 (0.5)
Townes-Brocks syndrome	857	1	1 (0.1)	1 (0.1)
Trauma		1		
VACTERL/VACTER association	887	2	2 (0.2)	2 (0.2)
Vasculitis	52,759	7	7 (0.8)	
Wilms tumor	654	2	2 (0.2)	

Tx: transplants

both in children and adults. Within the pediatric cohort, a diagnosis of rare or monogenic disease is not by itself sufficient to predict graft survival probability. Indeed, a clear and unique trend was not evident by this analysis.

Overall, this survey has drawn attention on the significant proportion of patients included in a waiting list or already transplanted who lack a disease diagnosis at the time of transplant (25–27). Moreover, a prominent quote of patients requiring organ transplantation are affected by rare and monogenic diseases (17, 18). These data open the discussion on the possibility to improve the diagnostic power by introducing genetic testing as part of the clinical flow before organ transplants, at least for some patient categories (36–39). The availability of sequencing platforms, the possibility to design selective gene panels for the analysis as well as the reduced costs of genetic tests may be in favour of this hypothesis, while avoiding doubtful exams and diagnosis. Having the correct diagnosis of the original disease that leads to organ insufficiency is relevant for many reasons, including i) the identification of the best therapeutic window to perform transplantation, ii) prevention of post-transplant complications that can be related to the original disease, iii) adoption of specific therapeutic regimens. This issue becomes even more relevant for rare and monogenic

diseases where the genetic testing is crucial for a univocal diagnosis.

A further point to be stressed is that, at least for a small proportion of these patients, novel therapeutic approaches may represent a viable alternative to transplantation. While this is currently available mostly in the context of clinical trials, it is conceivable that in the near future targeted treatments, such as gene therapy/editing and stem cell-based therapies may become available for an increasingly higher number of rare diseases (40–42).

Lastly, a final consideration regards the economic impact of transplants as a treatment strategy compared to conventional treatments. At least in Western countries, it is well known that transplantation is cost-effective compared to other options (43, 44). As an example, for kidney, transplantation is the best choice compared to dialysis, with an initial cost of approximately 45,000 Euros that drops-off to 8,000 Euros starting from the second year after transplantation.

Conclusions

This work was designed to provide an updated snapshot of organ transplants in Italy, considered from a genetic perspective. We went through the Italian Transplant

Key points

1. 82.8% of transplants recorded in the TR have a defined diagnosis

2. 5.6% of the transplants in Italy involves children, with the higher percentage (8.9%) reached for heart transplants and the lower (3.7%) for kidney

3. Liver, kidney and heart are the most frequently transplanted organs in pediatric patients

4. There are more than one hundred different diseases that cause organ failure, requiring transplantation

5. 91.4% of these conditions belongs to the rare diseases category

6. 92.7% of pediatric patients undergoing organ transplants are affected by rare diseases

7. 61.1% of transplanted pediatric patients are diagnosed with a monogenic disease

8. The proportion of pediatric patients with monogenic diseases varies according to the transplanted organ: 80.8% for heart; 87.2% for lung; 66.2% for liver; 46.3% for kidney

9. Pediatric transplants, except for lung, are characterized by a better overall graft survival compared to adult transplanted patients

Fig. 7 Key points of the study. Highlights of the study emerging from this national survey of patients included in National Transplants Registry

dependent variable. P values < 0.05 were considered statistically significant. All data were analyzed using STATA (v 16.1 Copyright 1985–2019 StataCorp LP 4905 Lake-way Drive College Station, Texas 77,845 USA).

Supplementary Information

The online version contains supplementary material available at <https://doi.org/10.1186/s13023-021-02013-x>.

Additional file 1. Additional file 1 includes Supplementary Table 1 showing combined transplants in the pediatric and adult cohorts included in the study and a Supplementary Table 2 listing Transplant Centers that enrolled pediatric and adult patients included in the study and present in the Transplant Registry.

Acknowledgements

This study was carried out thanks to the support and cooperation of the Italian National Transplant Network. We wish to thank staff at Transplant Centres, the hospitals that took care of waitlisted and transplanted patients, as well as those that made organ donation possible. Finally, yet importantly, our deepest gratitude is for the donor families, whose generosity makes, each day, transplantation accessible for many patients.

Authors' contributions

TV, DP, PM, AR, LL, SD, MC and A. Amoroso designed research, analyzed results and wrote the manuscript; E. Gringeri, SC, M. Spada, SM, ADG, GL, MV, GG, AT, CPN, A. Amodeo, LR, LdS, EB, IF, ST, LP, AM, AS, CG, E. Gotti, M. Schiavon, MB, DDA, AB, DP, MT, CP provided diagnosis and clinical data about the pediatric cohort. All authors read and approved the final manuscript.

Funding

This work was supported by the Italian Ministry of Education (Progetto strategico di Eccellenza Dipartimentale #D15D18000410001, awarded to the Department of Medical Sciences, University of Turin; members: T. Vaisitti, S. Deaglio and A. Amoroso) and by Regione Piemonte (DD 803 25.11.2019 to A. Amoroso).

Availability of data and materials

The datasets generated and/or analysed during the current study are not publicly available since they are part of the National Transplantation Center only, but are available from the corresponding author on reasonable request.

Declarations

Ethics approval and consent to participate

All patients included in TR consented to registration and use of their data, which were treated and analysed in compliance with the European General Data Protection Regulation (EU GDPR), anonymizing sensitive data and processing aggregate data. National Transplant Center Data Protection Officer (DPO) authorized this study. The study has been approved by the Ethics Committee of the Italian "Istituto Superiore di Sanità" (PRE BIO CE 01.00 – 0015976).

Consent for publication

Not applicable.

Competing interests

The authors declare that they have no competing interests.

Author details

¹Department of Medical Sciences, University of Torino, Via Nizza 52, 10126 Torino, Italy. ²National Transplant Center, Istituto Superiore Di Sanità, Roma, Italy. ³Immunogenetics and Transplant Biology, Azienda Ospedaliera Universitaria Città Della Salute E Della Scienza Di Torino, Torino, Italy. ⁴Hepatobiliary Surgery and Liver Transplantation Unit, Padova University Hospital, Padova, Italy. ⁵General Surgery 2U - Liver Transplant Center, Azienda Ospedaliera Universitaria Città Della Salute E Della Scienza Di Torino, University of Turin, Torino, Italy. ⁶Division of Hepatobiliarypancreatic Surgery, Liver and Kidney Transplantation, Research Unit of Clinical Hepatogastroenterology and Transplantation, Bambino Gesù Children's Hospital, IRCCS, Rome, Italy. ⁷Department of Pediatrics, Ismett, Palermo, Italy. ⁸Paediatric Hepatology, Gastroenterology and Transplantation, Papa Giovanni XXIII Hospital, Bergamo, Italy. ⁹Center for Coordination on rare diseases – Regione Campania, Cardiovascular Rare and Genetic Diseases Unit, Department of Cardiology, Monaldi Hospital, AORN Dei Colli, Naples, Italy. ¹⁰DeGasperi CardioCenter, Niguarda Great Metropolitan Hospital, Milan, Italy. ¹¹Heart Transplantation Unit, Cardio-Thoraco-Vascular Sciences and Public Health Department, University Padova Hospital, Padova, Italy. ¹²UOS Transplantation Surgery, Asst Papa Giovanni XXIII Hospital, Bergamo, Italy. ¹³Pediatric Cardiac Surgery and Congenital Cardiopathies Unit, Regina Margherita Children's Hospital, Azienda Ospedaliera Città Della Salute E Della Scienza Di Torino, Turin, Italy. ¹⁴Bambino Gesù Children's Hospital, IRCCS, Rome, Italy. ¹⁵Paediatric Cardiology and ACHD Unit, S. Orsola, Malpighi Hospital, Bologna, Italy. ¹⁶Renal Transplant Unit, Bambino Gesù Children's Research Hospital IRCCS, Rome, Italy. ¹⁷Pediatric Nephrology, Dialysis and Transplant Unit, Department of Women's and Children's Health, Padua University Hospital, Padua, Italy. ¹⁸Azienda Ospedaliera

Universitaria San Martino, Genoa, Italy. ¹⁹Pediatric Nephrology, Dialysis and Transplant Unit, Fondazione IRCCS Ca' Granda-Ospedale Maggiore Policlinico, Milan, Italy. ²⁰Pediatric Nephrology Unit, Regina Margherita Children's Hospital, Azienda Ospedaliera Universitaria Città Della Salute E Della Scienza Di Torino, Turin, Italy. ²¹Azienda Ospedaliera, Universitaria Policlinico Di Bari, Bari, Italy. ²²Department of Pediatrics, Ismett, Palermo, Italy. ²³Nephrology, Dialysis and Kidney Transplant Unit, IRCCS Azienda Ospedaliero-Universitaria Di Bologna, Bologna, Italy. ²⁴Unit of Nephrology, Azienda Socio Sanitaria Territoriale Papa Giovanni XXIII, Bergamo, Italy. ²⁵Thoracic Surgery and Lung Transplant Unit, Department of Cardiac, Thoracic, Vascular Sciences and Public Health, University Hospital of Padua, Padua, Italy. ²⁶Heart and Lung Transplant Center, Cardiac Surgery Division, Surgical Sciences Department, University of Torino, Torino, Italy. ²⁷Bambino Gesù Children's Hospital, IRCCS, Rome, Italy. ²⁸Division of Thoracic Surgery and Lung Transplantation, Department for the Treatment and Study of Cardiothoracic Diseases and Cardiothoracic Transplantation, IRCCS-ISMETT, Palermo, Italy. ²⁹Department of Organ Failure and Transplantation, ASST Giovanni XXIII, Bergamo, Italy. ³⁰Ospedale Maggiore Policlinico, Milan, Italy. ³¹Department of Thoracic Surgery, Policlinico Umberto I Hospital, University of Rome Sapienza, Rome, Italy.

Received: 26 May 2021 Accepted: 24 August 2021
Published online: 04 September 2021

References

- Schioppati A, Henter JI, Daina E, Aperia A. Why rare diseases are an important medical and social issue. *Lancet*. 2008;371(9629):2039–41.
- Liu BC, He L, He G, He Y. A cross-national comparative study of orphan drug policies in the United States, the European Union, and Japan: towards a made-in-China orphan drug policy. *J Public Health Policy*. 2010;31(4):407–20.
- Bolk S, Puffenberger EG, Hudson J, Morton DH, Chakravarti A. Elevated frequency and allelic heterogeneity of congenital nephrotic syndrome, Finnish type, in the old order Mennonites. *Am J Hum Genet*. 1999;65(6):1785–90.
- OMIM: Online Mendelian Inheritance in Man [Available from: <https://www.omim.org/statistics/entry>]
- Wright CF, FitzPatrick DR, Firth HV. Paediatric genomics: diagnosing rare disease in children. *Nat Rev Genet*. 2018;19(5):325.
- Boycott KM, Rath A, Chong JX, Hartley T, Alkuraya FS, Baynam G, et al. International Cooperation to Enable the Diagnosis of All Rare Genetic Diseases. *Am J Hum Genet*. 2017;100(5):695–705.
- Farnaes L, Hildreth A, Sweeney NM, Clark MM, Chowdhury S, Nahas S, et al. Rapid whole-genome sequencing decreases infant morbidity and cost of hospitalization. *NPJ Genom Med*. 2018;3:10.
- Kochanek KD, Murphy S, Xu J, Arias E. Mortality in the United States, 2016. *NCHS Data Brief*. 2017;293:1–8.
- O'Malley M, Hutcheon RG. Genetic disorders and congenital malformations in pediatric long-term care. *J Am Med Dir Assoc*. 2007;8(5):332–4.
- Synnes AR, Berry M, Jones H, Pendray M, Stewart S, Lee SK, et al. Infants with congenital anomalies admitted to neonatal intensive care units. *Am J Perinatol*. 2004;21(4):199–207.
- Ferreira CR. The burden of rare diseases. *Am J Med Genet A*. 2019;179(6):885–92.
- Starzl TE. History of clinical transplantation. *World J Surg*. 2000;24(7):759–82.
- Zuber K, Howard T, Davis J. Transplant in the 21st century. *JAAPA*. 2014;27(11):26–34.
- Merion RM, Schaubel DE, Dykstra DM, Freeman RB, Port FK, Wolfe RA. The survival benefit of liver transplantation. *Am J Transplant*. 2005;5(2):307–13.
- Schaubel DE, Sima CS, Goodrich NP, Feng S, Merion RM. The survival benefit of deceased donor liver transplantation as a function of candidate disease severity and donor quality. *Am J Transplant*. 2008;8(2):419–25.
- Europe TCo. Council of Europe portal2020 [Available from: <https://www.edqm.eu/en/reports-and-publications>].
- Quaglia M, Musetti C, Ghiggeri GM, Fogazzi GB, Settanni F, Boldorini RL, et al. Unexpectedly high prevalence of rare genetic disorders in kidney transplant recipients with an unknown causal nephropathy. *Clin Transplant*. 2014;28(9):995–1003.
- Schrezenmeier E, Kremerskothen E, Halleck F, Staeck O, Liefeldt L, Choi M, et al. The underestimated burden of monogenic kidney disease in adults waitlisted for kidney transplantation. *Genet Med*. 2021.
- Hayes D Jr, Cherikh WS, Chambers DC, Harhay MO, Khush KK, Lehman RR, et al. The International Thoracic Organ Transplant Registry of the International Society for Heart and Lung Transplantation: Twenty-second pediatric lung and heart-lung transplantation report-2019; Focus theme: Donor and recipient size match. *J Heart Lung Transplant*. 2019;38(10):1015–27.
- Kirkby S, Hayes D Jr. Pediatric lung transplantation: indications and outcomes. *J Thorac Dis*. 2014;6(8):1024–31.
- Fagioli S, Daina E, D'Antiga L, Colledan M, Remuzzi G. Monogenic diseases that can be cured by liver transplantation. *J Hepatol*. 2013;59(3):595–612.
- Azzi Y, Bartash R, Scalea J, Loarte-Campos P, Akalin E. COVID-19 and Solid Organ Transplantation: A Review Article. *Transplantation*. 2021;105(1):37–55.
- Galvan NTN, Moreno NF, Garza JE, Bourgeois S, Hemmersbach-Miller M, Murthy B, et al. Donor and transplant candidate selection for solid organ transplantation during the COVID-19 pandemic. *Am J Transplant*. 2020;20(11):3113–22.
- Ottlewski I, Munch J, Wagner T, Schonauer R, Bachmann A, Weimann A, et al. Value of renal gene panel diagnostics in adults waiting for kidney transplantation due to undetermined end-stage renal disease. *Kidney Int*. 2019;96(1):222–30.
- Kramer A, Pippas M, Noordzij M, Stel VS, Afentakis N, Ambuhl PM, et al. The European Renal Association - European Dialysis and Transplant Association (ERA-EDTA) Registry Annual Report 2015: a summary. *Clin Kidney J*. 2018;11(1):108–22.
- Saran R, Li Y, Robinson B, Abbott KC, Agodoa LY, Ayanian J, et al. US Renal Data System 2015 Annual Data Report: Epidemiology of Kidney Disease in the United States. *Am J Kidney Dis*. 2016;67(3 Suppl 1):Svii, S1–305.
- Titze S, Schmid M, Kottgen A, Busch M, Floege J, Wanner C, et al. Disease burden and risk profile in referred patients with moderate chronic kidney disease: composition of the German Chronic Kidney Disease (GCKD) cohort. *Nephrol Dial Transplant*. 2015;30(3):441–51.
- Harness-Brumley CL, Elliott AC, Rosenbluth DB, Raghavan D, Jain R. Gender differences in outcomes of patients with cystic fibrosis. *J Womens Health (Larchmt)*. 2014;23(12):1012–20.
- Konstan MW, Morgan WJ, Butler SM, Pasta DJ, Craib ML, Silva SJ, et al. Risk factors for rate of decline in forced expiratory volume in one second in children and adolescents with cystic fibrosis. *J Pediatr*. 2007;151(2):134–9.
- Sweezey NB, Ratjen F. The cystic fibrosis gender gap: potential roles of estrogen. *Pediatr Pulmonol*. 2014;49(4):309–17.
- McIntyre K. Gender and survival in cystic fibrosis. *Curr Opin Pulm Med*. 2013;19(6):692–7.
- Bikbov B, Perico N, Remuzzi G, on behalf of the GBDGDEG. Disparities in Chronic Kidney Disease Prevalence among Males and Females in 195 Countries: Analysis of the Global Burden of Disease 2016 Study. *Nephron*. 2018;139(4):313–8.
- Tomlinson LA, Clase CM. Sex and the incidence and prevalence of kidney disease. *Clin J Am Soc Nephrol*. 2019;14(11):1557–9.
- Dayoub JC, Cortese F, Anzic A, Grum T, de Magalhaes JP. The effects of donor age on organ transplants: a review and implications for aging research. *Exp Gerontol*. 2018;110:230–40.
- Goldfarb SB, Levvey BJ, Edwards LB, Dipchand AI, Kucheryavaya AY, Lund LH, et al. The registry of the international society for heart and lung transplantation: nineteenth pediatric lung and heart-lung transplantation report-2016; focus theme: primary diagnostic indications for transplant. *J Heart Lung Transplant*. 2016;35(10):1196–205.
- Bullich G, Domingo-Gallego A, Vargas I, Ruiz P, Lorente-Grandoso L, Furlano M, et al. A kidney-disease gene panel allows a comprehensive genetic diagnosis of cystic and glomerular inherited kidney diseases. *Kidney Int*. 2018;94(2):363–71.
- Groopman EE, Marasa M, Cameron-Christie S, Petrovski S, Aggarwal VS, Milo-Rasouly H, et al. Diagnostic utility of exome sequencing for kidney disease. *N Engl J Med*. 2019;380(2):142–51.
- Lata S, Marasa M, Li Y, Fasel DA, Groopman E, Jobanputra V, et al. Whole-exome sequencing in adults with chronic kidney disease: a pilot study. *Ann Intern Med*. 2018;168(2):100–9.

39. Vaisitti T, Sorbini M, Callegari M, Kalantari S, Bracciana V, Arruga F, et al. Clinical exome sequencing is a powerful tool in the diagnostic flow of monogenic kidney diseases: an Italian experience. *J Nephrol*. 2020.
40. Cossu G, Birchall M, Brown T, De Coppi P, Culme-Seymour E, Gibbon S, et al. Lancet commission: stem cells and regenerative medicine. *Lancet*. 2018;391(10123):883–910.
41. Lapteva L, Vatsan R, Purohit-Sheth T. Regenerative medicine therapies for rare diseases. *Transl Sci Rare Dis*. 2018;3(3–4):121–32.
42. Tambuyzer E, Vandendriessche B, Austin CP, Brooks PJ, Larsson K, Miller Needleman KJ, et al. Therapies for rare diseases: therapeutic modalities, progress and challenges ahead. *Nat Rev Drug Discov*. 2020;19(2):93–111.
43. Tissen JCAJ, B.; Rabinovich, L.; de Vries, H.; Hatziandreu, E.; Patrui, B.; Ling, T. Improving organ donation and transplantation in the European Union. 2008.
44. Van der Spiegel S. Economic costs and benefits of transplantation. European Commission; 2013.

Publisher's Note

Springer Nature remains neutral with regard to jurisdictional claims in published maps and institutional affiliations.

Ready to submit your research? Choose BMC and benefit from:

- fast, convenient online submission
- thorough peer review by experienced researchers in your field
- rapid publication on acceptance
- support for research data, including large and complex data types
- gold Open Access which fosters wider collaboration and increased citations
- maximum visibility for your research: over 100M website views per year

At BMC, research is always in progress.

Learn more biomedcentral.com/submissions

