



Estimating changes in temperature extremes from millennial-scale climate simulations using generalized extreme value (GEV) distributions

Whitney K. Huang¹, Michael L. Stein², David J. McInerney³, Shanshan Sun⁴, and Elisabeth J. Moyer⁴

¹Department of Statistics, Purdue University, West Lafayette, IN 47907, USA

²Department of Statistics, University of Chicago, Chicago, IL 60637, USA

³School of Civil, Environmental and Mining Engineering, University of Adelaide, Adelaide, South Australia, 5005, Australia

⁴Department of the Geophysical Sciences, University of Chicago, Chicago, IL 60637, USA

Correspondence to: Whitney K. Huang (huang251@purdue.edu)

Received: 5 December 2015 – Revised: 16 May 2016 – Accepted: 6 June 2016 – Published: 1 July 2016

Abstract. Changes in extreme weather may produce some of the largest societal impacts of anthropogenic climate change. However, it is intrinsically difficult to estimate changes in extreme events from the short observational record. In this work we use millennial runs from the Community Climate System Model version 3 (CCSM3) in equilibrated pre-industrial and possible future (700 and 1400 ppm CO₂) conditions to examine both how extremes change in this model and how well these changes can be estimated as a function of run length. We estimate changes to distributions of future temperature extremes (annual minima and annual maxima) in the contiguous United States by fitting generalized extreme value (GEV) distributions. Using 1000-year pre-industrial and future time series, we show that warm extremes largely change in accordance with mean shifts in the distribution of summertime temperatures. Cold extremes warm more than mean shifts in the distribution of wintertime temperatures, but changes in GEV location parameters are generally well explained by the combination of mean shifts and reduced wintertime temperature variability. For cold extremes at inland locations, return levels at long recurrence intervals show additional effects related to changes in the spread and shape of GEV distributions. We then examine uncertainties that result from using shorter model runs. In theory, the GEV distribution can allow prediction of infrequent events using time series shorter than the recurrence interval of those events. To investigate how well this approach works in practice, we estimate 20-, 50-, and 100-year extreme events using segments of varying lengths. We find that even using GEV distributions, time series of comparable or shorter length than the return period of interest can lead to very poor estimates. These results suggest caution when attempting to use short observational time series or model runs to infer infrequent extremes.

1 Introduction

As the Earth's mean climate changes under increased concentrations of human-emitted greenhouse gases, the intensity and frequency of extreme weather conditions may change as well (Easterling et al., 2000, chap. 11; IPCC, 2013, and references therein). Extreme events, while rare by definition, can have large impacts on both human society and environmental systems: present-day weather damages are dominated by rare events that happen only every several decades or less

(NOAA, 2015), and society's vulnerability to extreme events appears to be growing (Kunkel et al., 1999). In the United States, the frequency of climate and weather events with damages greater than USD 1 billion appears to be increasing at around 5 % per year (Smith and Katz, 2013). It remains unclear to what extent long-term climate trends contribute to that rise, but these factors have led to extensive efforts to understand the relationship between long-term climate change driven by greenhouse gas forcing and potential changes in climate extremes.

Over the past 2 decades, numerous studies have sought to identify changes in temperature extremes both in observations (Easterling et al., 2000; Shaby and Reich, 2012; Parey et al., 2013; Westra et al., 2013; Lee et al., 2014; Naveau et al., 2014) and in general circulation model (GCM) simulations of future climate (Kharin and Zwiers, 2000; Tebaldi et al., 2006; Kharin et al., 2007; Sterl et al., 2008; Frías et al., 2012; Kharin et al., 2013). A number of studies find that extreme changes follow closely with changes in means and standard deviations (e.g., de Vries et al., 2012; Parey et al., 2013). Parey et al. (2013), for example, argue that changes in temperature extremes in station data from Eurasia and the United States are largely explained by changes in the mean and standard deviation of daily temperatures within the relevant season (summer for warm extremes and winter for cold extremes). Other studies may suggest more complex changes. Barbosa et al. (2011) use quantile regression and clustering to show that the changes in the 5th percentiles and the 95th percentiles of daily air temperature over central Europe are not the same as changes in medians, although they do not explicitly examine to what extent these differences can be explained by changing standard deviations. Ballester et al. (2010) find evidence that accounting for changes in skewness in marginal distributions allows for a more accurate representation of changes in cold extremes than can be obtained from just considering changes in mean and standard deviation.

Analysis of changes in extremes is complicated by the fact that there is no unique definition of “extremes”. One common definition is as exceedance of certain defined thresholds, with threshold values often defined based on past climate distributions (e.g., Frich et al., 2002; Alexander et al., 2006; Tebaldi et al., 2006). Analyses then evaluate changes in the frequencies at which these thresholds are surpassed. Alexander et al. (2006), for example, used percentile-based thresholds for various climate metrics from 3 decades of global gridded observations (1961–1990) and then considered changes in a subsequent period (1991–2003). They found a significant increase in the occurrence of annual warm nights (defined as the 90th percentile of daily minimum temperature under the past climate) and a significant decrease in the occurrence of cold nights (defined as the 10th percentile of daily minimum temperature under the past climate). However, those studies do not characterize changes in the shape of a distribution by making use of information on the magnitude of exceedances above (or below) the defined threshold.

An alternative and potentially more useful definition of “extremes” is based on occurrences in the far tail of the distribution of the quantity of interest. Extreme value theory (EVT) (Fisher and Tippett, 1928; Gumbel, 1958; Coles, 2001; Katz et al., 2002) provides a mathematical framework for studying these far tails. One common approach making use of EVT is based on “block extremes”, the maxima (minima) of some climate variable over given blocks of time. In climate studies, blocks of 1 year are common (e.g., Zwiers and Kharin, 1998), although Parey et al. (2013) use blocks

of 45–50 days in order to get two blocks per season. Under some conditions, the magnitudes of extremes over sufficiently long blocks approximately follow a generalized extreme value (GEV) distribution (Gnedenko, 1943, Leadbetter et al., 1983, and see chap. 1 of de Haan and Ferreira, 2006, for details). In these cases, the tail behavior of the distribution can be described by a functional form involving only three parameters: the location, scale, and shape parameters of the GEV distribution. For example, the widely used measure of extreme events, the r -year return level, can be expressed as a function of the GEV parameters (see Sect. 3 for further review). Annual extremes are directly relevant to important societal impacts; for example, the coldest temperature in a winter can affect the abundance of the beetle population in the following spring (Shi et al., 2012; Weed et al., 2013; Zhang and Zwiers, 2013). The behavior of annual extremes is difficult to discern from marginal distributions of daily temperatures. Figure 1 illustrates how changes in block extremes can differ from changes in the underlying overall distribution, using seasonal temperature minima from millennial-scale climate model runs. Figure 3 in Sect. 3.2 illustrates the effect on return levels of changing each individual GEV parameter.

The major limitation of the block extremes approach is that it discards all but the most extreme value within each block. In contrast, the peak over threshold (POT) method uses all data above a specified threshold. The POT method models exceedances over a (sufficiently high/low) threshold as a generalized Pareto distribution (GPD) (Pickands III, 1975; Smith, 1989; Davison and Smith, 1990). Point process theory as applied to exceedances over a threshold provides a unified way to derive both GEV and GPD distributions (Resnick, 1987; Smith, 1989). While the POT method allows data on extremes to be used more efficiently, it requires choosing appropriate thresholds and declustering temporally dependent extremes. Threshold selection becomes complicated because temperature extremes show strong seasonality and temporal dependence. Furthermore, the temporal dependence in threshold exceedances means that it is not straightforward to convert inferences from the POT approach into inferences on annual extremes. We focus on the block extremes approach here because of its simplicity, its ease of interpretation, and its common usage in climate science.

An important advantage of using any EVT-based approach for the study of climate extremes is that it allows estimation of the probability of events that are more rare than the “moderate extremes” analyzed in threshold exceedance studies. The threshold exceedance study of Alexander et al. (2006), for example, used a threshold equivalent to the 90th percentile of temperature calculated over a 5-day sliding window, which corresponds to events whose present mean recurrence interval is only 50 days. EVT allows examination of rare events of much longer recurrence intervals, and in principle even allows estimation of return levels longer than the observed range of the available time series together with a measure of statistical uncertainty. EVT has been widely ap-

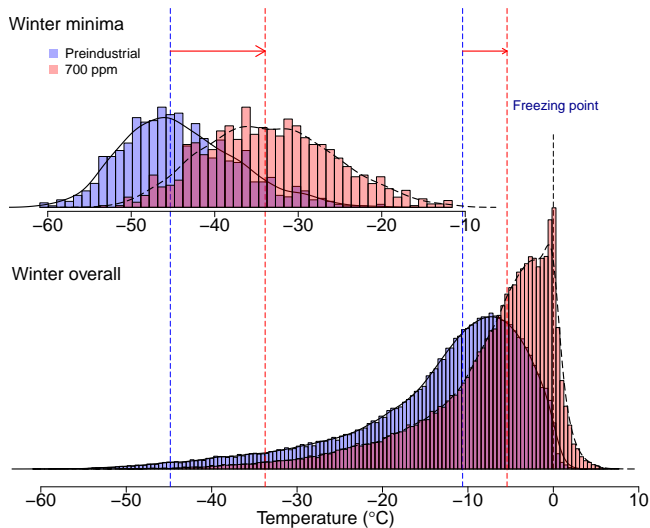


Figure 1. Wintertime (December–February) temperatures from a location in Idaho from 1000-year CCSM3 model runs under pre-industrial and 700 ppm CO₂ levels. Bottom: marginal distributions of daily minimum temperatures in winter. Top: distributions of winter seasonal minima. Note: (1) in both climate states, the distributions of seasonal minima are skewed to the right, whereas their marginal distributions are skewed to the left; (2) in the future warmer climate state, variation in the marginal distribution decreases but variation in the seasonal minima increases; and (3) the median of the distribution of seasonal minima increases more than the median of the marginal distribution. We use seasonal instead of annual minima in this example so that the marginal and extreme distributions are based on the same data. The analogous plot for summertime maxima at this location is shown in Appendix Fig. A1.

plied in hydrology, for example, to estimate 100-year floods using several decades of data (Gumbel, 1958; Katz et al., 2002).

In the past 2 decades, EVT has been applied in numerous studies to climate variables, generally temperature and precipitation (including Zwiers and Kharin, 1998; Kharin and Zwiers, 2005; Kharin et al., 2007; Sterl et al., 2008; Frías et al., 2012; Craigmile and Guttorp, 2013; Kharin et al., 2013). Studies have evaluated GEV distributions both in observational data and in output from general circulation models (GCMs) and regional climate models (RCMs). Kharin et al. (2007, 2013) evaluated GCM ensembles from the CMIP3 and CMIP5 archives under several projected emission scenarios. In both studies, they found asymmetry in extreme changes, with high temperature extremes in most regions following changes in the mean summer temperature, while low temperature extremes warmed substantially more than mean winter temperatures.

Prior GEV studies are limited to some extent by two factors: the length and non-stationarity of the analyzed time series. For observational studies, existing data records are relatively short (often only several decades). Model runs may be

longer, but the model runs used in these studies typically extend only around 100 years from the present. For some models and scenarios, “initial condition ensembles” are available, i.e., multiple runs of the same model and forcing scenario that differ only in their initial conditions. Such ensembles obviously provide further information about extreme events, but they generally include only a few model realizations. The length of the time series has a large influence on the ability to detect changes in extremes, and a record that is too short can lead to large uncertainty in estimated return levels at long periods (see Sect. 6). Furthermore, at present and for the foreseeable future, the Earth’s climate is not in equilibrium, but is evolving (transient), so the GEV model must be extended to account for non-stationarity in climate extremes. The means of extension are not trivial. The most commonly used nonstationary GEV model (e.g., Kharin and Zwiers, 2005) assumes that location and scale parameters change linearly in time and the shape parameter is time-invariant. A more flexible approach to modeling nonstationarity can be achieved by using generalized additive temporal structure of the parameters for extreme value distributions (Chavez-Demoulin and Davison, 2005; Yee and Stephenson, 2007; Heaton et al., 2011). Given the limited information about extreme events, it is a challenging and important problem to decide on an appropriate degree of flexibility in a nonstationary model.

In this study we avoid the limitations of short transient runs by using three long (millennial) climate model runs in which climate is fully equilibrated. Although numerical simulations of future climates provide only suggestions for possible changes in climate variables, not direct evidence of changes, they are important complements to observational studies. We use temperature output from the widely used Community Climate System 3 (CCSM3) model (Collins et al., 2006; Yeager et al., 2006) at three different CO₂ levels. For each scenario, the climate model is run for a sufficiently long warmup period to ensure the climate has fully responded to forcing changes, so that any time series of block extremes effectively forms a stationary sequence. Millennial stationary runs allow a more accurate determination of any changes in GEV distributions than do the shorter runs of the CMIP archives. The long model runs also allow us to assess, based on the max-stable property of GEV distributions (see Sect. 5 for details), the appropriateness of the choice of annual blocks that have been traditionally used with shorter (century-scale) climate model runs. Finally, millennial runs allow us to evaluate empirically the sampling errors when estimating extreme return levels in shorter model runs, because we can use estimates based on entire long runs as “ground truth”.

The paper is structured as follows: in Sect. 2, we describe the climate model output used in this work; in Sect. 3, we provide a background for the univariate extreme value theory we employ; in Sect. 4, we describe the changes in extreme value distributions and corresponding return levels, and compare them with changes in climate means. In Sect. 5, we as-

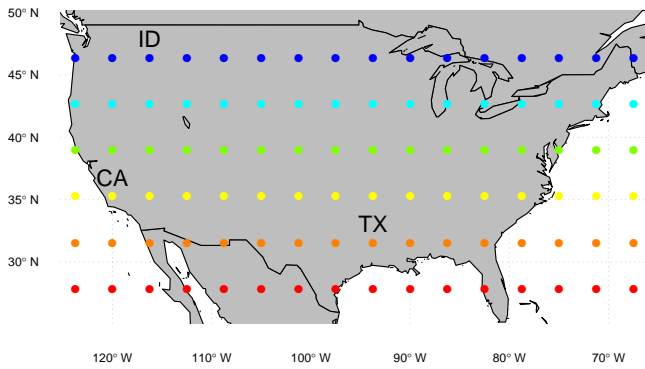


Figure 2. Locations of centers of grid cells for model output used here. The rainbow color scale for latitudes is used throughout this study. Idaho (ID), California (CA), and Texas (TX) grid cells are used as examples in Figs. 6, 10, and 11.

assess the assumption that annual blocks are sufficiently long for the GEV approximation to be valid, and in Sect. 6 we assess the sensitivity of estimates of return levels to the series length. We conclude with a discussion of the implications of these results.

2 GCM output

The GCM output used is part of an ensemble of climate simulations completed by the Center for Robust Decision Making on Climate and Energy Policy (RDCEP) (e.g., Castruccio et al., 2014; Leeds et al., 2015), using the Community Climate System Model version 3 (CCSM3) (Collins et al., 2006), a fully coupled model with full representation of the atmosphere (CAM3), land (CLM3), sea ice (CSIM5) and ocean (POP 1.4.3) components. The model was run at the relatively coarse T31 spatial resolution ($3.75^\circ \times 3.75^\circ$ grid) (Yeager et al., 2006), which made the lengthy runs used here possible. We use here the last 1000 years of output from each of three multimillennial runs with different atmospheric CO_2 concentrations: 289 ppm (pre-industrial), 700 ppm (3.4°C increase in global mean temperature (GMT)), and 1400 ppm (6.1°C increase in GMT). In each case, solar forcing, aerosol concentrations, and concentrations of greenhouse gases other than CO_2 are kept at their pre-industrial values. The final 1000 years of each model run are very nearly in equilibrium: net global radiative imbalances at the surface and at the top-of-atmosphere (TOA) are smaller than 0.1 W m^{-2} . The annual extreme temperatures therefore effectively form stationary time series. In this work, we consider annual maxima (from 1 January to 31 December) of daily maximum temperature (T_{\max}) and annual minima (from 1 July to 31 June) of daily minimum temperature (T_{\min}) over the contiguous United States and adjacent ocean regions (see Fig. 2).

3 Statistical background

The GEV distribution is widely applicable in the sciences because it arises, at least approximately, in many cases of natural data. The simplest situation where a GEV distribution can arise is in distributions of maxima taken from sequences of n independent and identically distributed (i.i.d.) random variables (Y_1, \dots, Y_n) , with “block length” n sufficiently large. The extremal types theorem says that if the maxima $M_n = \max(Y_1, \dots, Y_n)$, after normalization (i.e., $\frac{M_n - b_n}{a_n}$, $a_n > 0$), converge in distribution as $n \rightarrow \infty$ (see Appendix B), then they converge to a GEV distribution (Fisher and Tippett, 1928; Gnedenko, 1943).

In this work, when studying high temperature extremes, the random variables $Y_{1,i}, \dots, Y_{n,i}$ are the daily maximum temperatures in year i , and the block length n is 365 days, so that $M_{n,i}$ is the maximum for year i . Of course time series of daily temperatures are neither independent (they are somewhat autocorrelated) nor identically distributed (their distributions vary within a year). There is however theoretical justification for the use of GEV distributions in our case: it has been shown that the independence assumption can be relaxed for weakly dependent stationary time series (Leadbetter et al., 1983; Hsing, 1991), and Einmahl et al. (2016) extended the theory to non-identically distributed observations with conditions on the tail distributions (e.g., distributions share a common absolute maximum). In this work, we explicitly assess whether inferred GEV distributions actually provide an adequate description of the data set in question. The CCSM3 temperature time series studied here do seem to meet this condition: quantile–quantile plots show that the GEV approximation fits reasonably well for most locations in our study area (see Figs. C1 and C2 in Appendix C). We therefore assume that annual maxima and minima of daily temperatures in our model output can be approximated by GEV distributions. We will revisit the assessment of the GEV approximation in Sect. 5 when we test whether our block length of 1 year is sufficient.

3.1 GEV distributions

We give here a brief review of EVT for block maxima. For further background, de Haan and Ferreira (2006) and Resnick (1987, 2007) give systematic theoretical accounts and Coles (2001) and Beirlant et al. (2004) provide statistical treatments. The GEV distribution function, described in terms of its three parameters μ , σ , and ξ , is

$$G_{\mu, \sigma, \xi}(y) = \begin{cases} \exp\left(-\left\{1 + \frac{\xi(y - \mu)}{\sigma}\right\}_+^{-\frac{1}{\xi}}\right) & \xi \neq 0, \\ \exp\left(-\exp\left\{\frac{-(y - \mu)}{\sigma}\right\}\right) & \xi = 0, \end{cases} \quad (1)$$

where $u_+ = \max(0, u)$. μ and σ are location and scale parameters, respectively, and the shape parameter ξ determines

the tail behavior of the density. When ξ is zero, the distribution is an *exponentially tailed* Gumbel distribution; $\xi > 0$ yields the *heavy-tailed* Fréchet distribution; and $\xi < 0$ yields the *bounded-tailed* reversed Weibull distribution, in which the distribution has an absolute maximum of $\mu - \sigma/\xi$. Distributions of temperature extremes typically have $\xi < 0$ (e.g., Gilleland and Katz, 2006; Fuentes et al., 2013).

To study low temperature extremes, we must consider minima rather than maxima. Equation (3.1) can be used to study minima simply by considering the maximum of $-Y_1, \dots, -Y_n$, where Y_j represents the daily minimum temperature on day j . However, if one lets (μ, σ, ξ) be the parameters for the corresponding GEV distribution of the maximum of the negative temperature, then increasing μ would correspond to decreasing temperature, which we find potentially confusing. We therefore adopt the convention that when considering temperature minima, for the corresponding GEV distribution, we write

$$G_{\mu,\sigma,\xi}(y) = \begin{cases} \exp\left(-\left\{1 + \frac{\xi(\mu - y)}{\sigma}\right\}_+^{\frac{-1}{\xi}}\right) & \xi \neq 0, \\ \exp\left(-\exp\left\{\frac{-(\mu - y)}{\sigma}\right\}\right) & \xi = 0. \end{cases} \quad (2)$$

With this definition, a larger μ corresponds to warmer temperature minima. In the remainder of this work, we assume that for annual maxima, the relevant GEV distribution is Eq. (3.1), and for annual minima, the relevant distribution is Eq. (2).

3.2 Relationship between GEV distributions and return levels

In the analysis that follows, we also describe extremes by their return levels, a widely used measure of extreme events. For warm temperature extremes, the r -year return level is the (block maximum) temperature exceeded on average once per r years. Note that the concept of return levels implicitly assumes stationary conditions. Return levels in a data set whose extremes follow a GEV distribution can be written in terms of the GEV parameters. Letting $p = 1/r$, the r -year return level y_p is the $100 \times (1 - p)$ th quantile of the underlying GEV distribution, which can be determined by solving the equation $G(y_p) = 1 - p$ (for $0 < p < 1$) to obtain

$$y_p = \begin{cases} \mu - \frac{\sigma}{\xi} \{1 - (-\log(1 - p))^{-\xi}\} & \xi \neq 0, \\ \mu - \sigma \log(-\log(1 - p)) & \xi = 0, \end{cases} \quad (3)$$

where the “log” denotes the natural logarithm. A similar result holds for temperature minima.¹

¹Note that Eq. (3) implicitly assumes block lengths of 1 year and must be changed for different block lengths: the definition of p becomes $p = b/r$, where b is the block length in years. The dif-

In the warmer climate conditions that result from higher atmospheric CO₂, the GEV distributions of temperature extremes may change, altering return levels. Changes in the different GEV parameters affect return levels in different ways. In Fig. 3, we illustrate the consequences on both distributions and return levels of changing each GEV parameter. Changing the location parameter μ simply shifts the distribution of extremes by the change $\Delta\mu$ and changes return levels uniformly at all return periods by the same amount (Fig. 3, top row). Changing the scale parameter σ broadens or narrows the distribution of extremes, so that for warm extremes, increasing σ increases return levels for long return periods and decreases them for short return periods (Fig. 3, middle row). Changing the shape parameter ξ alters the “heaviness” of the tails, but does so asymmetrically, with the greatest extremes most strongly affected (the high temperature tail for maxima, and the low temperature tail for minima). The resultant changes in return levels are then highly nonlinear with return period. Moderate changes in ξ have a negligible effect on return levels for periods less than 10 years, but strongly affect the “extreme extremes” at long return periods.

4 Results

By fitting the annual maxima and minima to a GEV distribution (see Appendix D for details), we can identify changes in the distribution of extremes in possible future warmer climates, and evaluate how the characteristics of those changes alter return levels of extreme events. We show results here for all three model runs (pre-industrial, 700 and 1400 ppm CO₂).

4.1 GEV parameters in pre-industrial and future climates

We show in Fig. 4 the estimated CCSM3 GEV parameters for warm and cold temperature extremes over the North American region. We show maps of GEV parameter values for the pre-industrial climate (left column), and maps of changes between pre-industrial and 700 ppm CO₂ (middle column) and between 700 and 1400 ppm CO₂ (right column). The fitted GEV parameters of the pre-industrial run show spatially coherent patterns, with both latitudinal gradients and land–ocean contrast that are consistent with expectations. The location parameters for warm extremes are highest where summers are warmest, in the desert southwest and the inland northeast/Midwest. Similarly, for cold extremes, μ s are lowest where winters are coldest: their pattern shows a strong latitudinal gradient but moderated along the coasts. The scale parameter, which affects the spread of the distribution of extremes, is largest in the continental interior and very small over the ocean, as expected. The shape parameter, which af-

ferences in r -year return levels defined by different block lengths are largest for the shortest return periods (largest p) and become negligible for multi-decadal return periods (p close to 0).

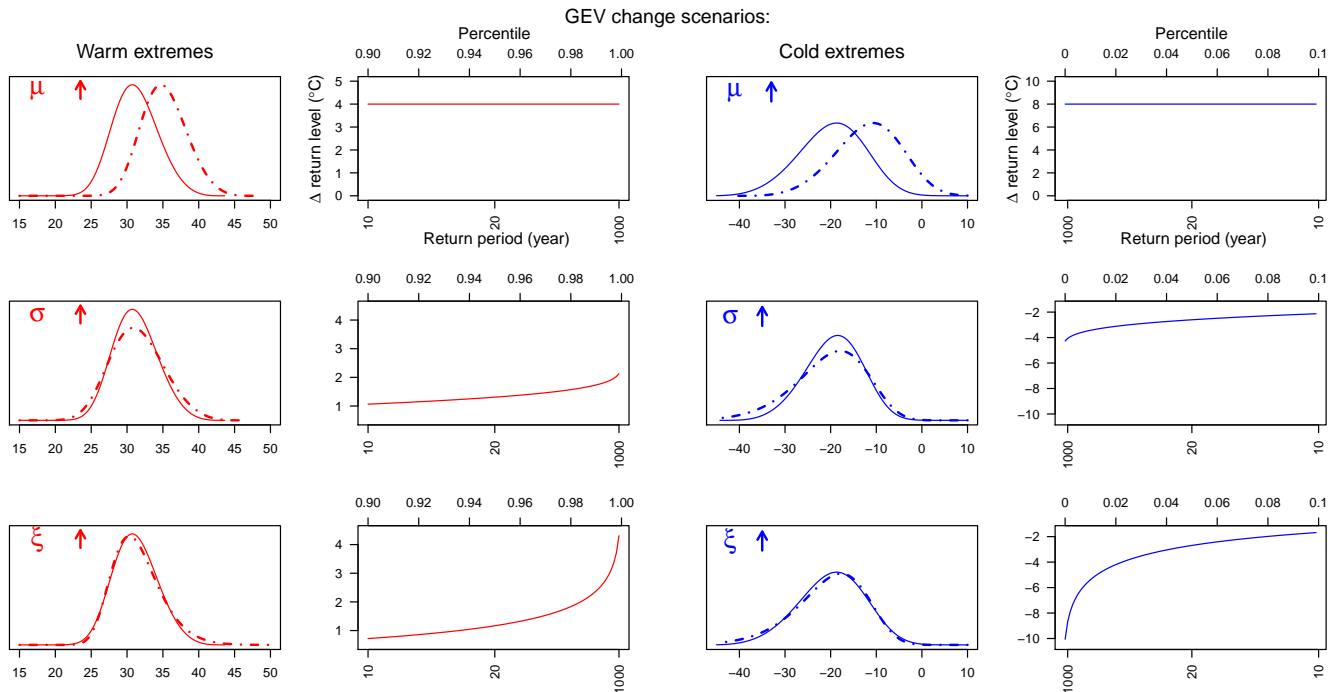


Figure 3. Illustration of the effect on return levels of changing individual GEV parameters. We show consequences for both warm (red, left columns) and cold (blue, right columns) extremes. Columns 1 and 3 show GEV distributions for baseline (solid) and future (dashed) climates. Columns 2 and 4 show resulting changes in return levels for different return periods. Note that 1000-year periods are on the right for warm and left for cold extremes, to conform with percentiles. Location and shape parameters used here are chosen as representative of our model results, with larger effects in cold extremes than warm extremes, while shape parameters are identical in both cases. Top row: changing the location parameter shifts return levels uniformly across return periods. Middle row: increasing the scale parameter produces effects dependent on return period. All return levels increase (decrease for cold extremes), but more so for longer return periods. Bottom row: increasing the shape parameter produces dramatic increases in return levels at very long return periods.

fects the far tail of the distribution of extremes, is negative nearly everywhere, as is usually the case for surface temperatures.

Under warmer future climate conditions, we have strong reasons to expect positive shifts in location parameters: extremes should shift to warmer values for both warm and cold extremes. There are, however, no simple physical arguments that guide expectations for changes in the scale and shape parameters. The 1000-year model runs used here allow us to accurately estimate changes in all three parameters under this model.

Changes in the location parameters for both warm and cold extremes are, as expected, positive everywhere in the study region (Fig. 4, first and fourth rows) as climate warms. As previously found in other studies of climate model output (Kharin et al., 2007, 2013) and observations (Lee et al., 2014), the changes are unequal, with a larger amount of warming in cold extremes than in warm extremes. For warm extremes, location parameter changes are fairly uniform spatially and similar to changes in summer mean temperatures (see Fig. E1 in Appendix E). For cold extremes, location parameter changes show a strong latitudinal gradient, similar to the pattern in seasonal mean changes but with greater mag-

nitude. That is, changes in cold extremes exceed changes in winter means (Fig. E2 in Appendix E). This asymmetry is readily explained by the asymmetric changes in the seasonal temperature distributions. In simulated warmer climate conditions, temperature variability (the standard deviation of the distribution) is relatively unchanged in summer but strongly reduced in winter, especially at higher latitudes (e.g., Holmes et al., 2016). Figure 5 shows that for both warm and cold extremes, changes in the location parameter are well explained by changes in means and standard deviations of seasonal temperature distributions.

For both warm and cold extremes, scale parameters show changes that are geographically complicated but statistically significant relative to pre-industrial values over much of the region (see Fig. 4). For warm extremes, scale parameters show little change over much of the study area but modest increases over the eastern US, up to 20% larger than pre-industrial values. Scale parameters change more strongly for cold extremes, with a strong latitudinal gradient over land. The change from pre-industrial to 700 ppm CO₂ leads to statistically significant decreases in scale parameters at lower latitudes but statistically significant increases at higher latitudes. Scale parameters for cold extremes additionally show

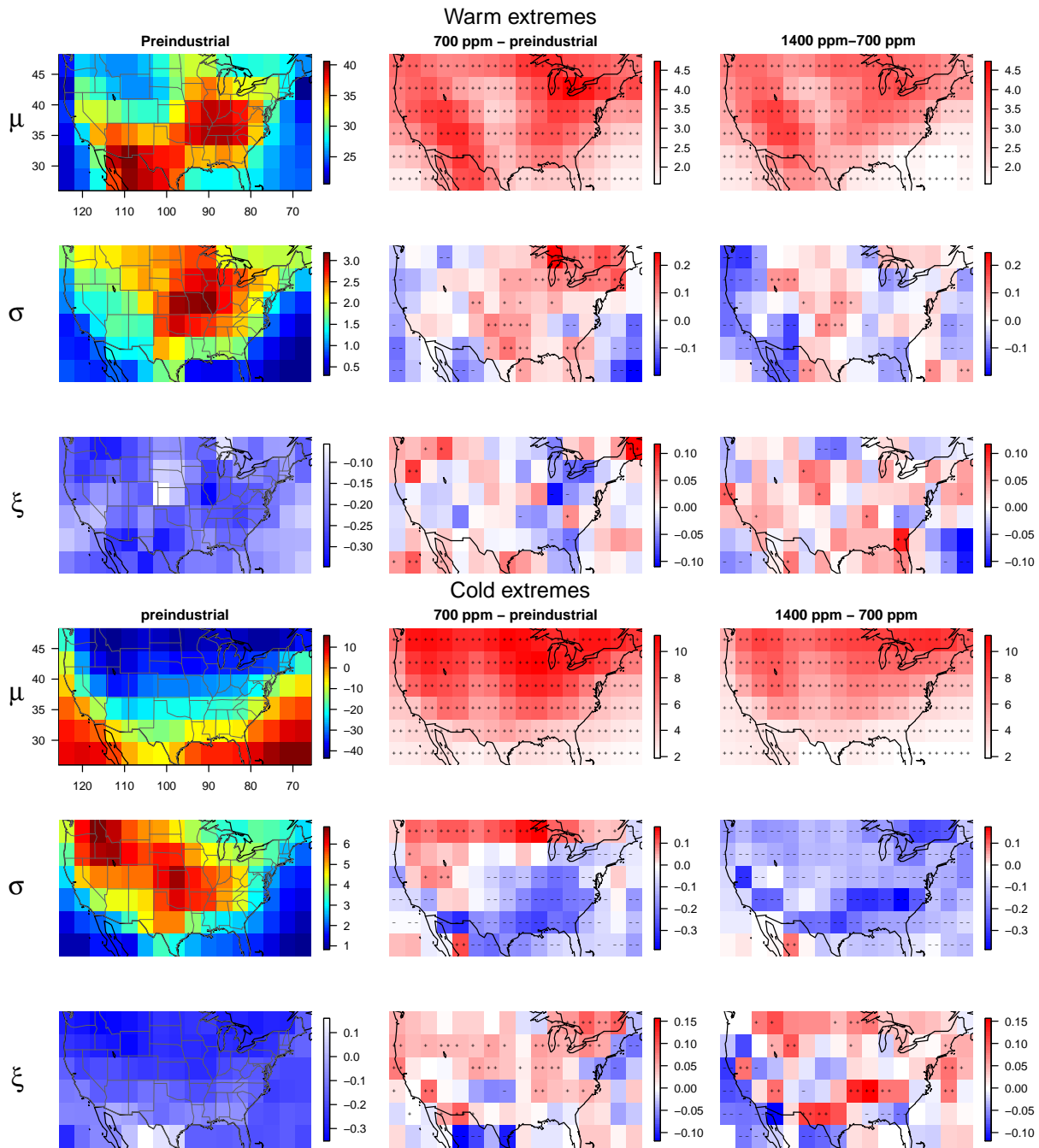


Figure 4. The estimated CCSM3 GEV parameters and their changes in possible future climate conditions. Left: fitted GEV parameters (location μ , scale σ , and shape ξ) for annual extremes for the baseline model run at pre-industrial CO_2 concentration. The top three panels are for warm extremes and the bottom ones are for cold extremes. Negative ξ is expected for temperature distributions. Middle: changes in parameters ($\Delta\mu$, $\Delta\log\sigma$, $\Delta\xi$) after a warming of global mean temperature by 3.4°C (by raising atmospheric CO_2 to 700 ppm). Right: changes in parameters after an additional 2.7°C warming (by raising CO_2 from 700 to 1400 ppm). The symbols $++$ or $--$ mean the bootstrapped p value for testing whether the parameter is different in the scenarios is < 0.02 ; $+$ or $-$ mean the p value is between 0.02 and 0.10.

clear nonlinear effects (see Fig. 4, fifth row, middle and right panels): scale parameters increase at high-latitude locations in the transition from pre-industrial conditions to

700 ppm, but then decrease at these same locations in the transition from 700 to 1400 ppm, partially negating the earlier increases. Shape parameters show few statistically sig-

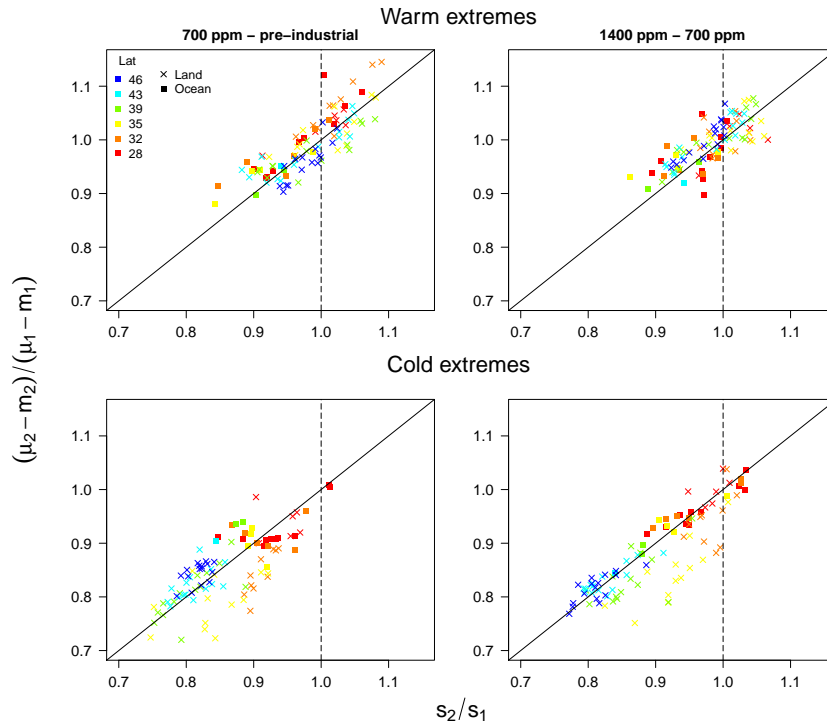


Figure 5. Assessment of whether *changes* in the location parameter of extremes are linked to changes in mean (m) and standard deviation (s) of the corresponding seasonal distributions. Left: ratio of differences between GEV location parameter and seasonal mean compared to ratio of within-season standard deviations, for the transition from pre-industrial (climate state 1) to 700 ppm CO₂ (climate state 2). Right: same results with climate state 1 corresponding to 700 ppm and state 2 to 1400 ppm. Scatterplots show these terms for all locations in study area, for warm extremes in upper panels and for cold extremes in lower panels. Plots show that $\mu_2 - m_2$ is very well approximated by $(\mu_1 - m_1)s_2/s_1$, where s_2/s_1 is the ratio of within-season standard deviations.

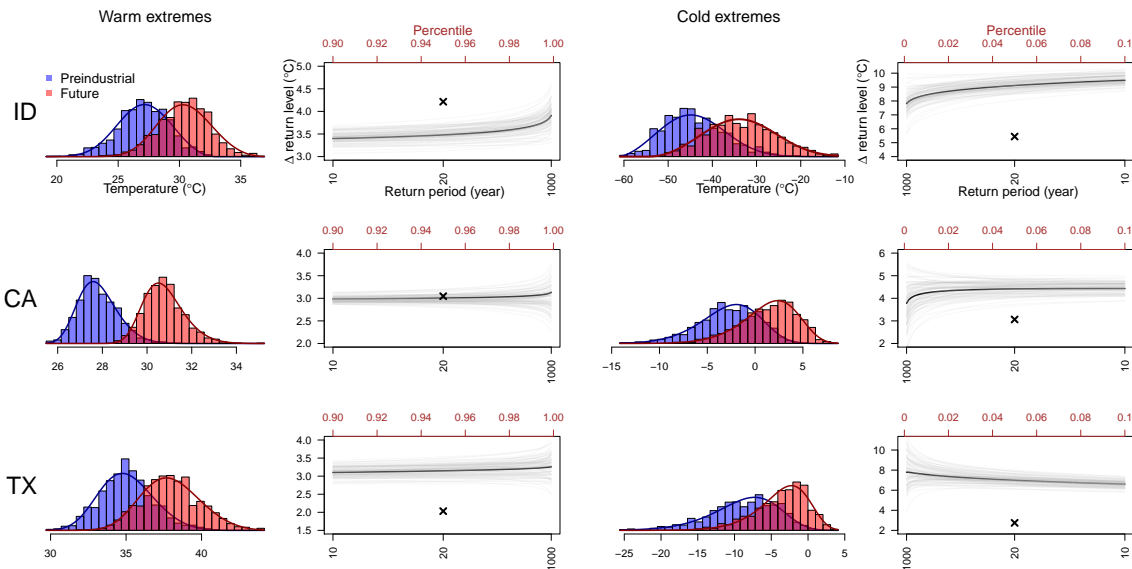


Figure 6. Illustration of the changes in return levels and their relationship with the changes in seasonal means. The histograms are for the 1000 annual maxima (warm extremes) and minima (cold extremes) for the pre-industrial (289 ppm, blue) and future (700 ppm, red). Smooth curves are corresponding estimated GEV distributions. Return level plots show changes in estimated return levels (dark curve) and uncertainty from the bootstrap procedure (lighter curves). The corresponding changes in seasonal means are marked with a cross (change in mean summertime daily maximum for warm extremes and mean wintertime daily minimum for cold extremes).

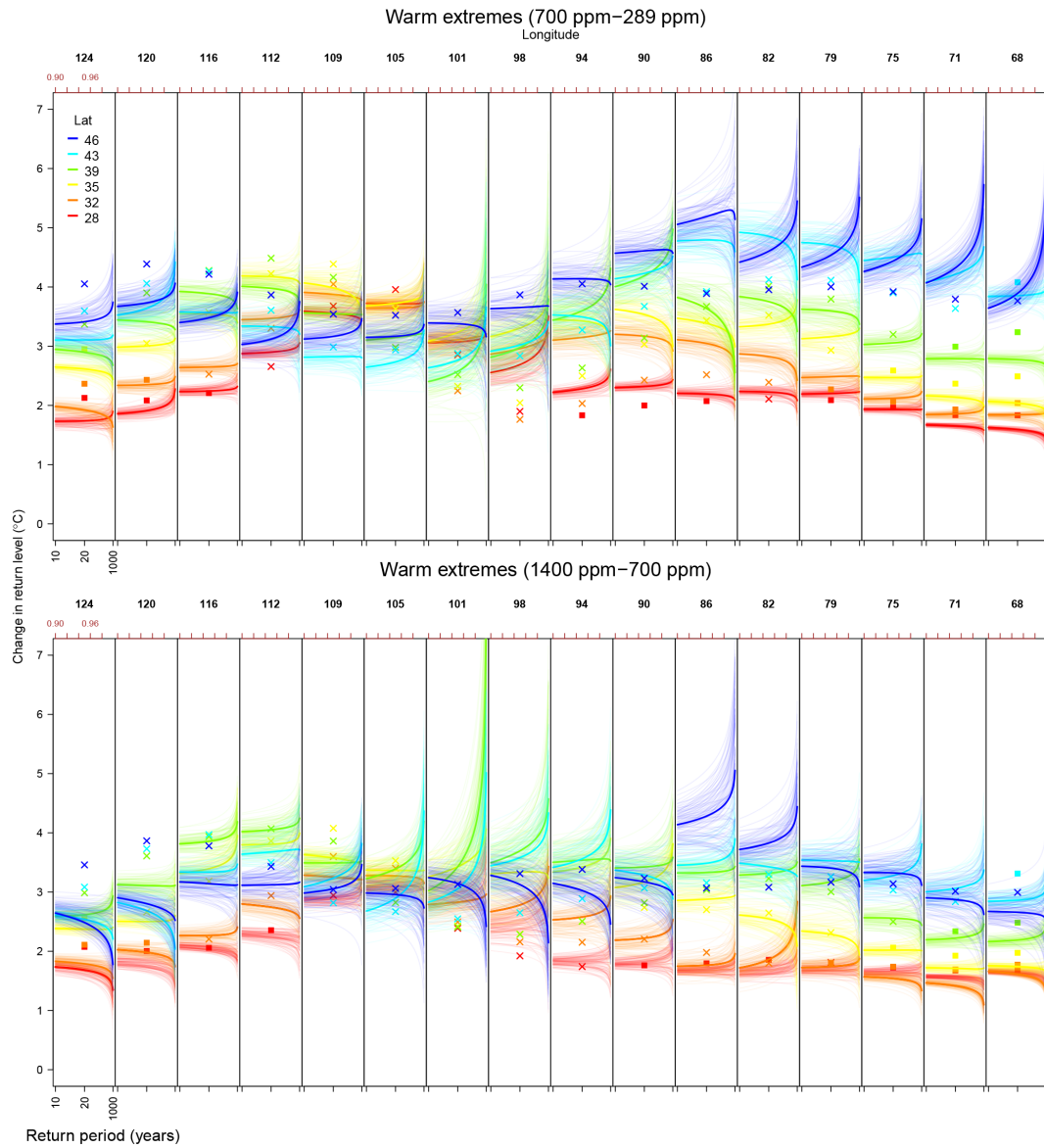


Figure 7. Estimated changes in warm extremes return levels for possible future climate conditions in our CCSM3 runs. Top: 700 ppm CO₂ vs. 289 ppm CO₂ climate conditions; bottom: 1400 ppm CO₂ vs. 700 ppm CO₂ climate conditions. Each panel shows results from the six grid cells in a longitude band, while each color represents a latitude band. Estimated changes in return levels are plotted as solid lines in their corresponding colors. Estimates obtained from block bootstrapped samples by resampling years are plotted as lighter and thinner curves to form envelopes representing the associated uncertainties. The corresponding summertime mean changes for inland and ocean grid cells are marked by cross and filled box symbols, respectively.

nificant changes for warm extremes but significant positive shifts for cold extremes in some areas. When considering the full change in climate states from pre-industrial to 1400 ppm CO₂, changes in the shape parameter for cold extremes are in general significant at most inland locations, indicating that linear transformations are not adequate for explaining all changes in extremes (see Fig. F1).

4.2 Changes in return levels

As discussed in Sect. 3.2, it can be helpful to describe changes in tail behavior in terms of changes in return levels. We showed in Fig. 3 how hypothetical changes in individual GEV parameters affect return levels at different return periods. Here we present examples of changes in the actual fitted GEV distributions of model output, and show how these produce changes in return levels. We use as examples three model locations (individual grid cells), located in Idaho

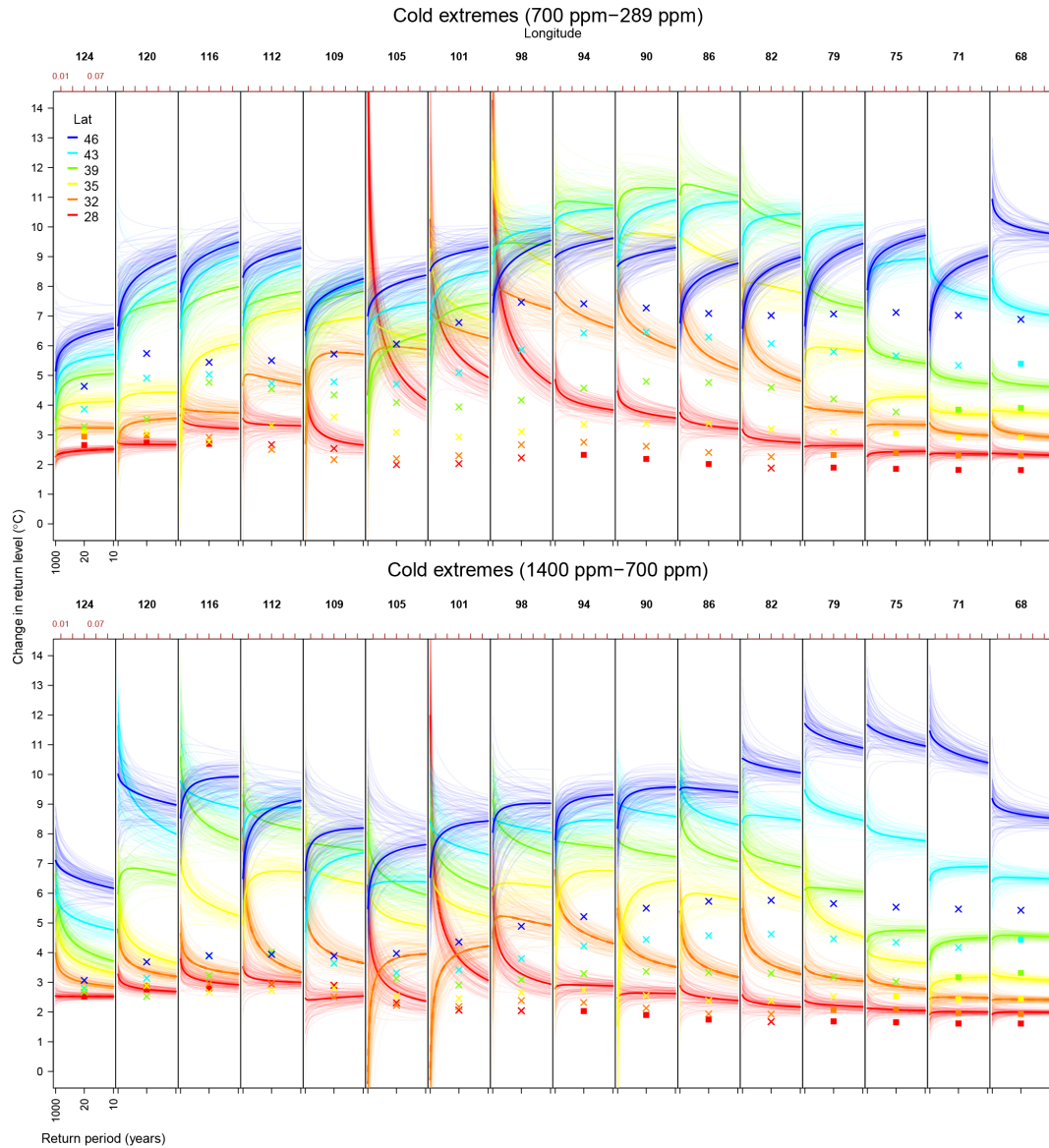


Figure 8. As in Fig. 7 but for annual temperature minima. Crosses and boxes now give wintertime mean changes. Note that the return period axis is now flipped so that longer return periods are on the left. In general, cold extremes warm more than do winter means, especially at high latitudes.

Table 1. GEV parameter estimates of warm and cold extremes for pre-industrial climate state and the estimated changes from pre-industrial to 700 ppm climate state at ID, CA, and TX locations.

	Warm extremes						Cold extremes					
	289 ppm			700–289 ppm			289 ppm			700–289 ppm		
	$\hat{\mu}$	$\hat{\sigma}$	$\hat{\xi}$	$\Delta\hat{\mu}$	$\Delta\hat{\sigma}$	$\Delta\hat{\xi}$	$\hat{\mu}$	$\hat{\sigma}$	$\hat{\xi}$	$\Delta\hat{\mu}$	$\Delta\hat{\sigma}$	$\Delta\hat{\xi}$
ID	26.4	2.1	-0.32	+3.3**	-0.03	+0.05*	-41.9	7.2	-0.37	+11.0**	+0.7**	+0.03
CA	27.5	0.8	-0.15	+2.9**	+0.02	+0.01	-1.5	2.9	-0.14	+4.2**	-0.3**	+0.04*
TX	34.4	1.7	-0.21	+2.9**	+0.25**	-0.01	-6.9	4.1	-0.10	+4.8**	-1.1**	+0.05

* means the bootstrapped p value for testing whether the parameter is different is between 0.02 and 0.1; ** means the p value is less than 0.02.

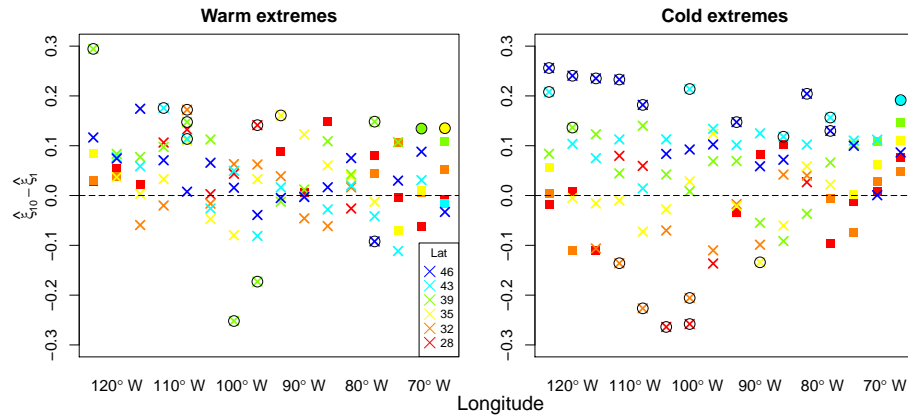


Figure 9. A statistical diagnostic of the assumption that annual blocks are sufficiently long for the GEV approximation. Differences (10- vs. 1-year blocks) in estimated shape parameters are plotted for warm (left) and cold (right) extremes against longitude. Estimates are shown for the pre-industrial climate state, for all model grid cell locations in the study area, with the same color and symbol scheme as in previous figures. Subscripts in notation denote the block length; e.g., $\hat{\xi}_{10}$ means 10-year blocks. Circled points are those locations where differences in estimates of the shape parameter changes are significant at the 0.05 level based on their bootstrapped p values.

(ID), California (CA), and Texas (TX) (see Fig. 2 for locations), that illustrate the behavior discussed in Sect. 4.1. For warm extremes in all three locations (Fig. 6, left columns), the changes in return levels are roughly constant for all return periods (except for ID at return periods approaching 1000 years), meaning the dominant change is simply a shift in the distribution of extremes, i.e., a change in location parameter. The shifts are close (within 1 °C) to the shifts in mean seasonal temperatures, as discussed previously. For cold extremes (Fig. 6, right columns), in the inland locations of TX and ID the shifts in extremes are much larger than in the seasonal means and the scale and shape factors play a significant role, producing return level changes that can vary with return period (though differently in different locations). Of the examples shown here, scale and shape parameters play the least significant role in the one coastal location (CA), as would be expected.

The different changes in warm and cold extremes shown in the example locations of Fig. 6 are characteristic of the whole contiguous United States. In CCSM3 model output, throughout the region, annual maximum return level changes follow changes in summer means, but annual minimum return level changes exceed winter means, with stronger influence of the scale and shape parameters. Figures 7 and 8 show the changes in return levels across return periods from 10 to 1000 years, for annual maxima and minima, respectively. For warm extremes, changes in return levels are relatively flat in both ocean and inland locations, implying that the dominant effect is a change in the location parameter. Exceptions include a small part of the central Midwest corn belt region and the far northeast, which show increases in return levels with return periods. The sharply rising “extreme extremes” in a few Midwest locations are due to the combined increases in both the scale and the shape parameter; these effects grow

still further in the transition to a 1400 ppm climate (Fig. 7, lower panel). For cold extremes (Fig. 8), return level changes for ocean locations are flat, but inland locations tend to show striking effects due to changes in scale and shape parameters. Effects differ by latitude: at low latitudes, return levels tend to increase with longer return periods, sometimes dramatically so, whereas at high latitudes, the pattern generally reverses, so that the most extreme cold temperatures tend to increase less than modestly extreme cold temperatures. This distinction is particularly apparent in the transition from pre-industrial to 700 ppm CO₂.

5 Sensitivity analysis: GEV block size

In this analysis, as in many climate applications of EVT, we have assumed that an annual block is long enough that the GEV distribution is approximately valid. Our long time series allow us to explicitly evaluate this assumption. The evaluation relies on the fact that the GEV distribution has the property of “max-stability”. In the context of distributions of block maxima (M_n), max-stability means that the distribution after normalization is identical for any block size larger than n .

In our case, if an annual block is long enough that the GEV distribution is approximately valid for a given time series, then the shape parameter estimate $\hat{\xi}_n$ obtained with annual blocks should be approximately the same as that obtained with a larger block size n' ($\hat{\xi}_{n'}$). The validity of the GEV approximation using annual extremes can therefore be assessed by checking the consistency of estimated shape parameters using longer block sizes (i.e., multiple years).

We refit GEV distributions for each grid cell in our study region with block maxima/minima sizes of 2, 5 and 10 years, and compare shape parameters. We find that for annual max-

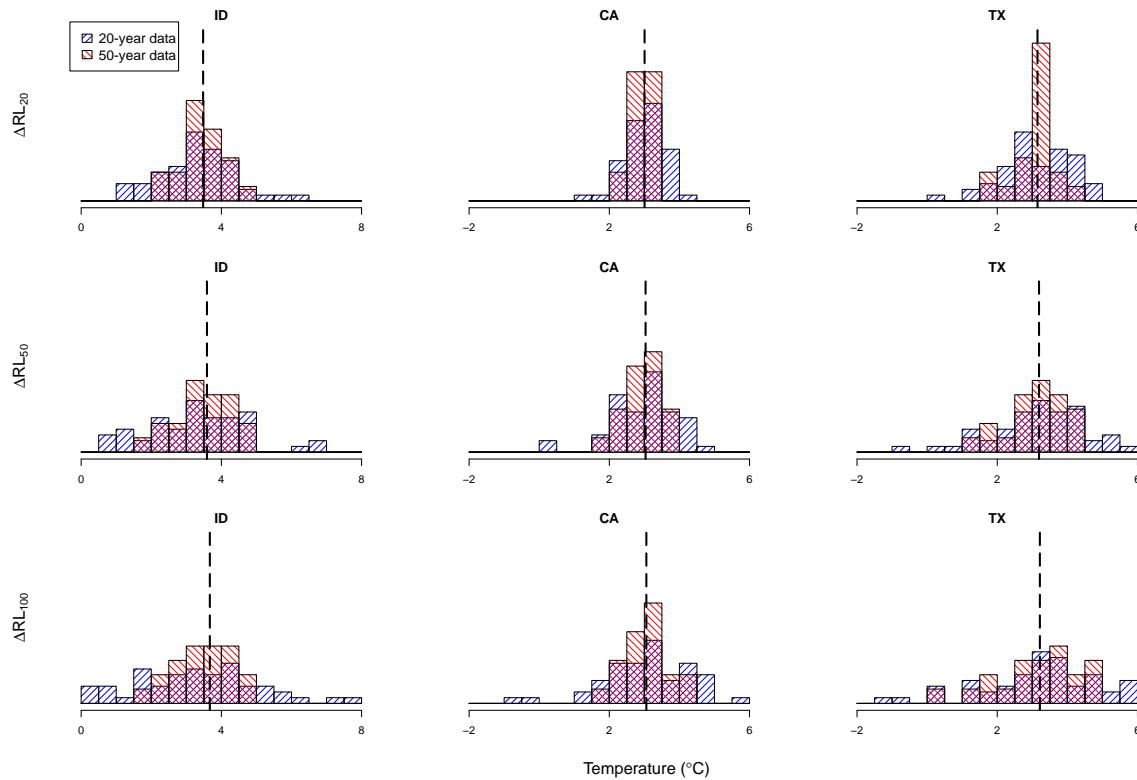


Figure 10. The relationship between sample errors for return levels and data lengths for warm extremes. Estimates of changes (from pre-industrial to 700 ppm CO₂) in return levels (20-, 50-, 100-year return periods) obtained by using different length segments (20 and 50 years, shown as blue and red histograms), as compared to the “ground-truth” changes obtained with the full 1000-year runs (dashed lines). We show warm extremes for the same three grid cells shown in previous figures, located in Idaho, California, and Texas. Pre-industrial return levels for these locations (for 20-, 50-, and 100-year periods) are ID: 30.4, 31.1, and 31.5 °C; CA: 29.4, 29.8, and 30.1 °C; and TX: 38.1, 38.9, and 39.4 °C.

ima, the differences in ξ with block size are distributed around zero, suggesting that an annual block size may be sufficient (Fig. 9, left panel). For annual minima, we see effects of block size depending on latitude: longer blocks produce larger ξ at high latitudes, where changes in extremes are largest (Fig. 9, right panel). These results suggest that 1 year may not be sufficiently long for the GEV approximation to be accurate. These results also suggest that quantile–quantile plots (see Fig. C2 in Appendix C) may not be sufficient to check for the appropriateness of the GEV distribution for the purpose of predicting events with a longer return period than the data length. We observe however that annual blocks may be long enough for the study of the *changes* in extremes, since changes in return levels are fairly consistent with block length (see Figs. C3 and C4).

6 Sensitivity analysis: data length on return level estimation

The 1000-year model runs used in this work provide fairly accurate estimates of changes in return levels even for long return periods. Estimated uncertainties in return level

changes – the bootstrapped envelopes in Fig. 8 – are generally within 20% of the estimated changes even for 100-year return periods. This data set therefore allows us to study empirically how well GEV methods work when applied to model output at the shorter lengths (decades to centuries) more commonly used in climate studies.

To assess how uncertainties increase with shorter model runs, we divide the pre-industrial and 700 ppm time series into segments of 20 or 50 years and refit the GEV parameters for each pair of segments (so, for example, pairing the first 20 years of the pre-industrial run with the first 20 years of the 700 ppm run). The resulting distributions of estimates of changes in return levels for warm and cold extremes are shown in Figs. 10 and 11.

The results show that sampling error can be large, as expected, when using climate simulations of length comparable to the return periods of interest. In both warm and cold extremes, the distribution of estimates of return level changes derived from short model segments are centered around their “true” values but with large spread (Figs. 10 and 11). In these examples, the sampling errors are comparable to their “true” changes in return level when 20-year segments are

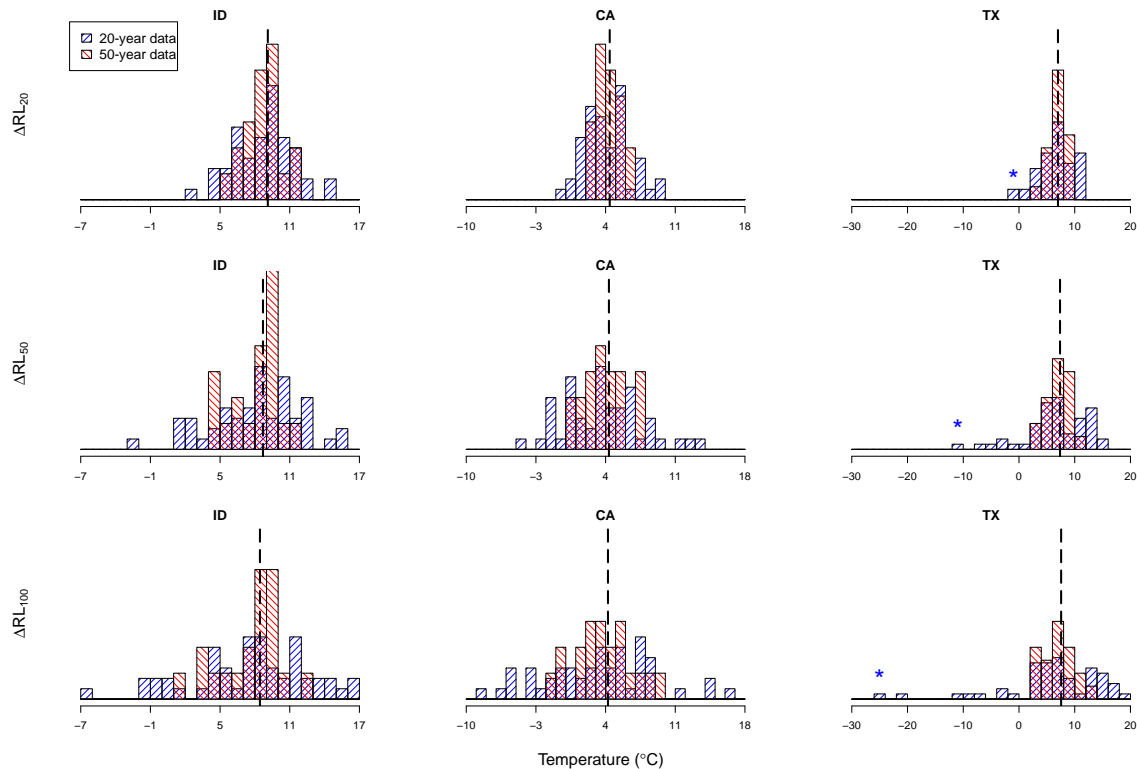


Figure 11. Same as Fig. 10 but for cold extremes. Pre-industrial return levels for these locations are ID: -54.9 , -56.8 , and -57.8 °C; CA: -8.5 , -10.1 , and -11.2 °C; and TX: -17.2 , -19.9 , and -21.8 °C. Especially unreliable estimates of changes in return levels were obtained for one pair of 20-year segments in TX (denoted by *). This error is mainly due to a poorly estimated shape parameter: for this pair of 20-year segments, the estimated shape increased from 0.10 to 0.60 (the estimates given by PWM are 0.12 and 0.11), while the “true” values (based on 1000-year runs) were -0.10 and -0.05 for the pre-industrial and 700 ppm scenarios, respectively.

used. Unsurprisingly, spreads are largest when using short model segments to predict long return periods. For example, for the Idaho test location, when changes in annual minimum 100-year return levels are estimated using 20-year segments (Fig. 11, lower left panel), those estimates can differ by ± 10 °C, while the “true” change is only 8.4 °C. Uncertainties can be affected by the choice of estimation method. Hosking et al. (1985) suggest that estimation based on the method of probability weighted moments (PWMs) has better small sample properties than maximum likelihood, as we use here. Figure D1 shows that results are generally very similar for the two methods, although a PWM does avoid the few cases of highly unrealistic estimates seen in Fig. 11 in the TX example location.

The example locations shown in Figs. 10 and 11 are representative of land locations in the entire study area. In Fig. 12, we show the spread in estimates for all model grid cells. We show two cases: estimating changes in 20-year returns (both warm and cold extremes) with 20-year segments and changes in 50-year returns with 50-year segments. The length of the model segment is especially important for temperature extremes, because their distribution has a bounded tail. For inland locations, the spread in estimates is comparable to the

true change for the 20-year case but somewhat lower for the 50-year case. Ocean locations show much smaller sampling error, presumably because changes in extremes are produced predominantly by shifts in the location parameter and not the scale or shape parameters, which are more difficult to estimate. The locations with the largest uncertainties are indeed those with the largest changes in shape parameter: a few Midwest locations for warm extremes and some locations in Mexico for cold extremes.

It is important to note that spatial modeling approaches may be able to reduce estimation variability. (See further discussion in the following section.) When not using such approaches, this assessment suggests that when using single model runs or observational data, sampling error may be quite large when the length of the series is comparable to the return period of interest.

7 Discussion

In this study, we have used extreme value theory to study changing temperature extremes in model projections of future climate states. Following prior work, we assume the GEV model provides a reasonable approximation for the

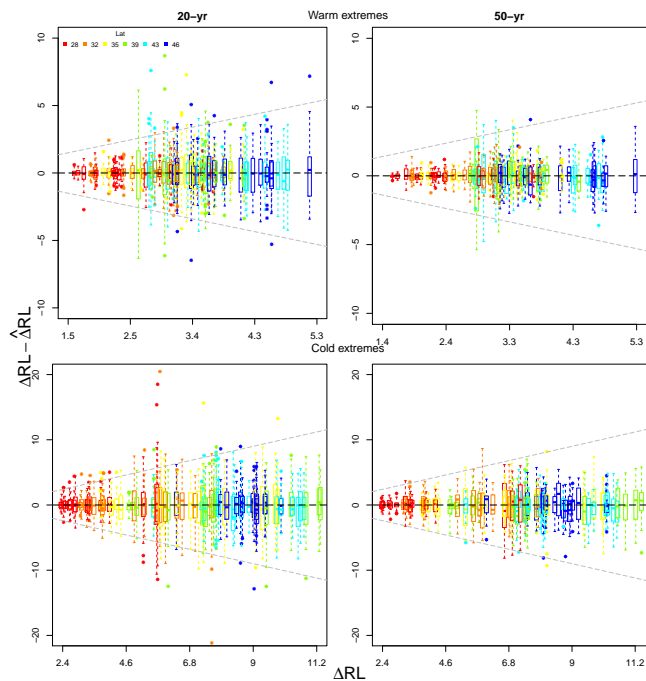


Figure 12. Assessment of sampling errors in estimates of return level changes using comparable data lengths for all model grid cells in the study area. Values shown are the estimated return level change minus the “ground-truth” change determined from the entire 1000-year segment ($\Delta\text{RL} - \hat{\Delta\text{RL}}$), plotted against the “ground-truth” change (ΔRL). Left: distribution (displayed as a boxplot) of estimates of changes in 20-year return levels made using 20-year segments. Right: the same for 50-year return levels and 50-year segments. Top and bottom rows show warm and cold extremes. Gray reference lines are the 1 : 1 lines (i.e., sampling error = return level change).

distribution of annual temperature extremes (see Figs. C1 and C2) and that changing temperature extremes can therefore be studied by estimating changes in GEV parameters and resulting implied changes in return levels. We use millennial-scale equilibrated simulations of pre-industrial and 700 and 1400 ppm CO_2 concentrations (producing changes in global mean temperature of 3.4 and 6.1 °C) to explore both the physics of climate model projections and the utility of statistical approaches based on GEV distributions in different contexts.

For our model runs, the results suggest that for the contiguous United States, much of the behavior of temperature extremes in higher CO_2 climate states appears to be a straightforward consequence of changes in the mean and standard deviation of the underlying temperature distributions. Annual warm extremes generally shift simply in accordance with mean shifts in summer temperatures. Annual cold extremes warm more strongly than do winter mean temperatures, but largely do so as expected given decreased variability in wintertime temperatures. In both cases, the changes in

the location parameter of annual extremes appear well explained by shifts in overall seasonal temperature means and standard deviations (Fig. 5). In most inland locations in the winter, changes in the scale and shape parameters can provide an additional complication, producing substantial differences in return level changes at longer return periods (Fig. 8). Note that these results are from a single climate model, and there is no guarantee that any model will capture all aspects of changes in extremes well (e.g., Parey et al., 2010). Model studies are, however, important given the difficulty in evaluating changes in extremes from the short observational record.

The millennial-scale model runs used here allow us to assess the validity of the use of annual block sizes in studies of GEV distributions of temperature extremes. Our results suggest that annual blocks are sufficiently long for representing warm extremes, but may be insufficient for cold extremes, especially for inland locations at high latitudes. In these locations, altering the block length alters the shape parameter of the estimated GEV distribution (Fig. 9). In general, increasing block size reduces biases, but can increase sampling error in estimates if the time series is limited. The choice of block size therefore requires consideration of inherent trade-offs.

Millennial-scale model runs also enable detailed investigation of the relationship between data length and GEV sampling error. Previous studies have suggested that extrapolation should be carried out with caution (e.g., Kharin et al., 2007). Our long runs allow us to better quantify estimation uncertainties resulting from short model runs. We find that over inland locations, estimation uncertainty is indeed large when using series length is comparable to the return period of interest (Fig. 12). Ocean locations show much smaller sampling errors, in large part because temperature variability is much lower over oceans than over land. When using very short series (e.g., 20 years), lack of data mandates care in choosing the appropriate estimation procedure (Hosking et al., 1985; Gilleland and Katz, 2006). Our 1000-year model runs allow us to concretely demonstrate the large uncertainties in estimates of changes in extremes that result when time series length is comparable to the return period of interest.

The computational demands of millennial-scale climate simulations restrict us here to examining a single climate model run at fairly coarse resolution. A single model should not be taken as robust guidance on how temperature extremes may change in future climate conditions. However, few modeling groups have performed runs of comparable length, and the multi-model data in public archives are not ideal for estimating changes in extremes: run lengths are much shorter (≈ 100 years), the number of realizations of any scenario is small, and climate conditions in the simulations are evolving rather than stationary. Estimating GEV distributions that are changing over time is also more challenging than in the equilibrium setting, making the limitations of short model runs even more pertinent. If understanding changes in extremes in

a changing climate is a research priority, larger ensembles of model runs would be helpful.

In the absence of large ensembles, one could potentially overcome some of the challenges of limited data by exploiting the spatial structure of temperature extremes (see Fig. 4) to “borrow strength over space”. Numerous prior studies do explicitly model the spatial structure of a climate variable of interest, e.g., Cooley et al. (2007), Cooley and Sain (2010), Craigmire and Guttorp (2013), and Wang et al. (2016). However, spatial modeling is not ideal: it may introduce bias, it greatly complicates the computation, and spatial structure in GEV parameters can be difficult to distinguish from spatial dependence in observed extremes. We do not use these approaches in this work since the millennial-scale model runs allow us to estimate the GEV parameters and their changes accurately by fitting them to each model grid cell separately. However, where only shorter time series (decades to centuries) are available, such as in analyses of observations, appropriate spatial modeling may be essential to reduce estimation uncertainty.

Extreme value theory (EVT) has become popular for studying climate extremes, but our results here suggest that one should be aware of the underlying assumptions, the corresponding implications, and the potential limitations when applying it. EVT using block extremes can potentially allow characterization of tail behavior that differs from that of the underlying distribution, but it involves a corresponding penalty, as fitting a distribution of block extremes necessarily involves throwing out most of one’s data. For short time series, care must be taken to ensure that the drawbacks do not outweigh the benefits. In the climate model output studied here, for example, shifts in the location parameter for both warm and cold extremes are well explained by changes in the mean and standard deviation of the underlying temperature distribution. The millennial time series used here allow us to also identify significant changes in the scale parameter, especially for cold extremes, but with shorter time series, sampling errors can be too large for estimated return levels to be of much practical value. Long model runs such as those used here therefore provide an important tool for the study of climate extremes, helping both in clarifying the contexts in which EVT should best be used and in devising approaches for working with shorter time series.

Appendix A: Comparison of distribution of extremes with overall distribution: summer

We show the comparison of the overall distribution and the distribution of extremes, as in Fig. 1 but here for summer rather than winter.

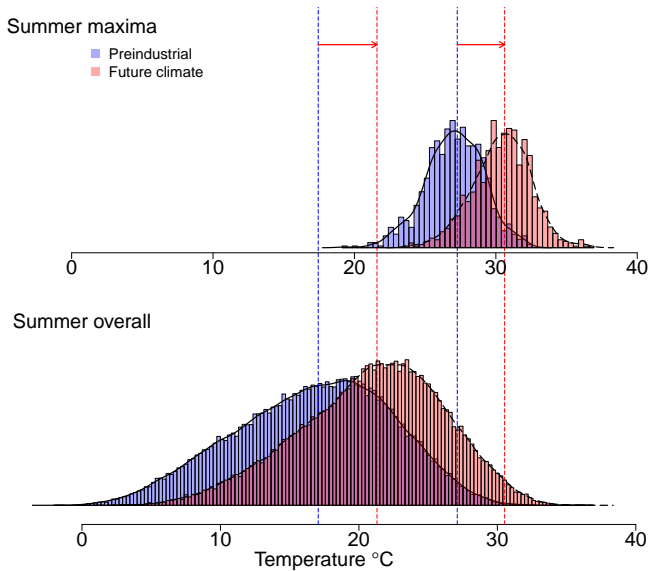


Figure A1. As in Fig. 1 but for summer warm extremes. Bottom: overall distribution of summer (JJA) daily maximum temperature (T_{\max}) in a northern Idaho location, for baseline and 700 ppm CO_2 climate states. Top: distributions of seasonal maxima of summer T_{\max} . Note that the median shift of the overall distribution is now slightly larger than that of the distribution of extremes; the opposite was true for winter cold extremes.

Appendix B: Extremal types theorem

In this appendix, we briefly describe the fundamental result in extreme value theory that justifies the use of GEV models for block maxima. Let $\{Y_i\}$ be a sequence of independent and identically distributed random variables with cumulative distribution function F and let $M_n = \max\{Y_1, \dots, Y_n\}$. When $n \rightarrow \infty$, the sequence of random variables $\{M_n\}$ converges to a single point $y_F = \sup\{y : F(y) < 1\}$, where y_F may be infinite. In order to have a useful description of the distribution of M_n when n is sufficiently large, normalization is needed; that is, we are seeking a limiting distribution for $\frac{M_n - b_n}{a_n}$. It turns out that if there exist constants $a_n > 0$ and b_n and a non-degenerate distribution function G such that

$$\mathbb{P}\left(\frac{M_n - b_n}{a_n} \leq y\right) \xrightarrow{d} G(y),$$

then G must be of the same type (two random variables X and Y are of the same type if $aX + b$ has the same distribution

as Y) as one of the three extreme value classes below:

Gumbel : $G(y) = \exp(-\exp(-y)) \quad -\infty < y < \infty;$

Fréchet : $G(y) = \begin{cases} 0 & y \leq 0, \\ \exp(-y^{-\alpha}) & y > 0, \quad \alpha > 0; \end{cases}$

reversed Weibull : $G(y) = \begin{cases} \exp(-(-y)^\alpha) & y < 0, \quad \alpha > 0, \\ 1 & y \geq 0; \end{cases}$

where $\alpha = 1/\xi$ for Fréchet and $\alpha = -1/\xi$ for reversed Weibull; see Eqs. (1) and (2). Conversely, any distribution function of the same type as one of these extreme value classes can appear as such a limit. The GEV distribution in Eq. (1) provides a unifying representation of these three types of distributions.

Appendix C: GEV diagnostics: Q–Q plots and effect of block size on estimated changes in return levels

C1 Q–Q plots

We assess the goodness of fit of GEV distributions used to model temperature extremes with quantile–quantile plots. That is, we plot the quantiles of our fitted GEV distributions against those of the empirical distribution of annual maxima and minima. Figures show good agreement for both warm and cold extremes (Figs. C1 and C2).

C2 Effect of block size on estimated changes in return levels

In Sect. 5, we showed that, based on the max-stable property of GEV, annual blocks may not be sufficiently long for GEV distribution to be valid for the purpose of extrapolating more extreme events (i.e., return periods are longer than the data length). Here we investigate whether annual blocks are appropriate to study the changes in return levels by comparing the results obtained from annual blocks vs. decadal blocks (Figs. C3 and C4). To infer return levels for annual extremes from decadal extremes, we need to make the additional assumption that annual extremes are independent across years.

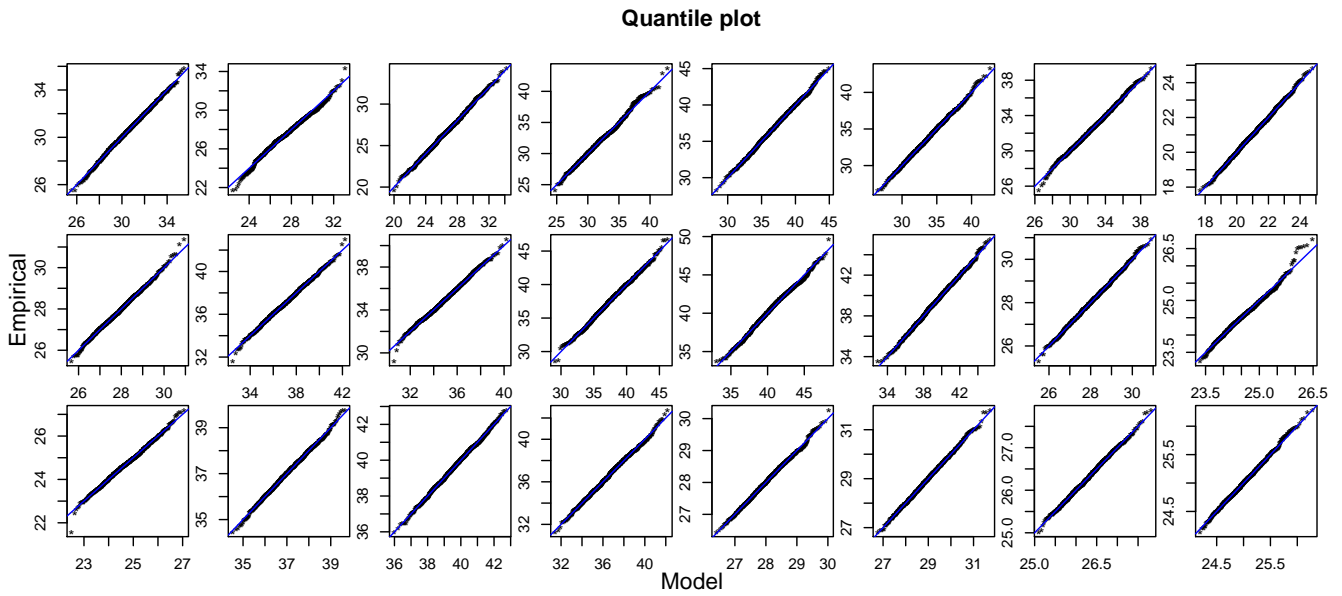


Figure C1. The Q-Q plots for the fitted GEVs of warm extremes in the model run simulating pre-industrial conditions. For clarity we display only every other row and column of the grid cells shown in Fig. 2.

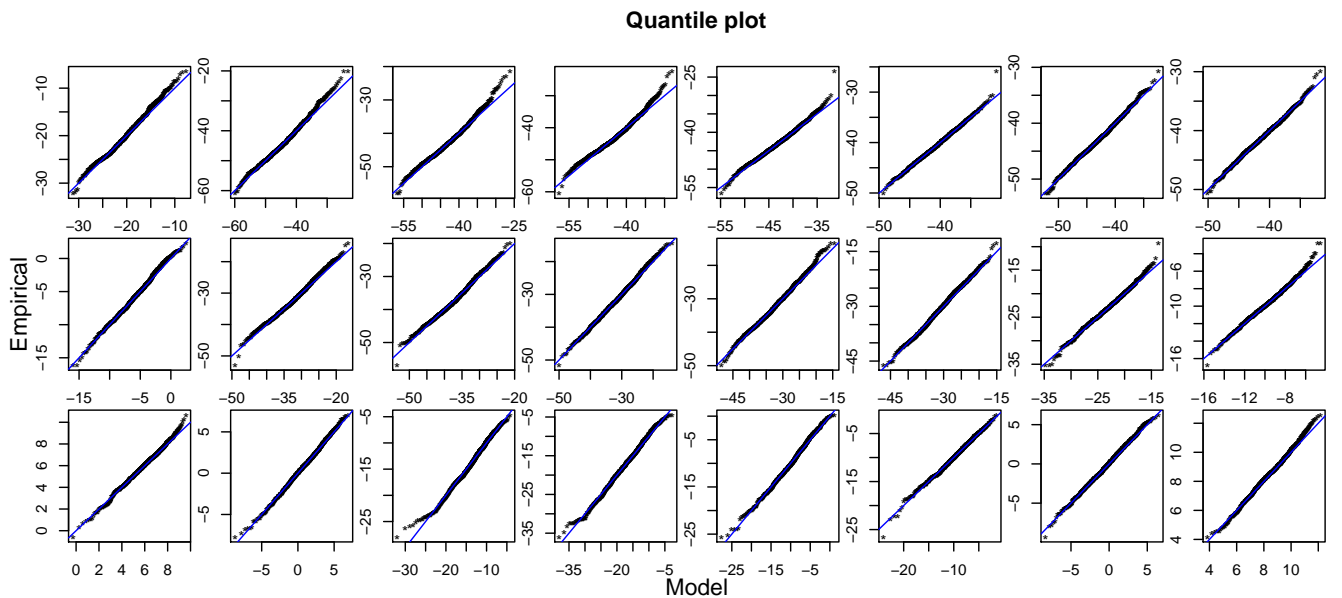


Figure C2. As in Fig. C1 but for cold extremes.

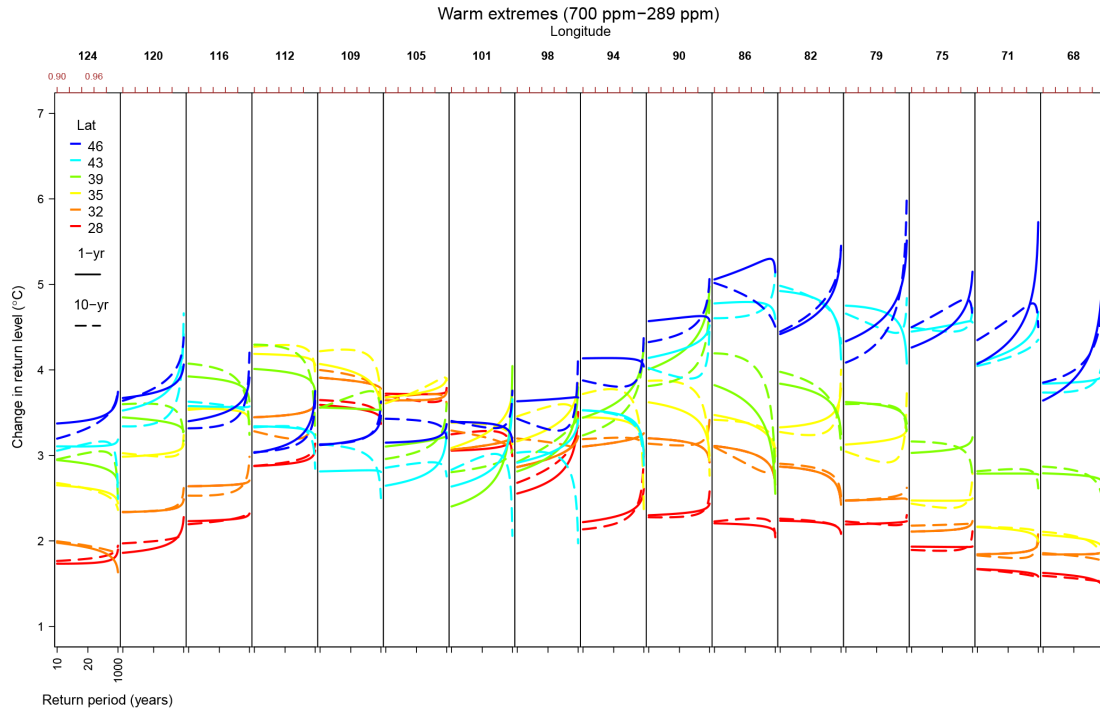


Figure C3. As in Fig. 7 (upper panel) but here comparing the estimated changes obtained from using annual maxima (solid lines) vs. decadal maxima (dashed lines). The results imply that annual blocks may be long enough to study the changes in warm extremes, since changes in return levels are fairly consistent with those using block sizes of 10 years.

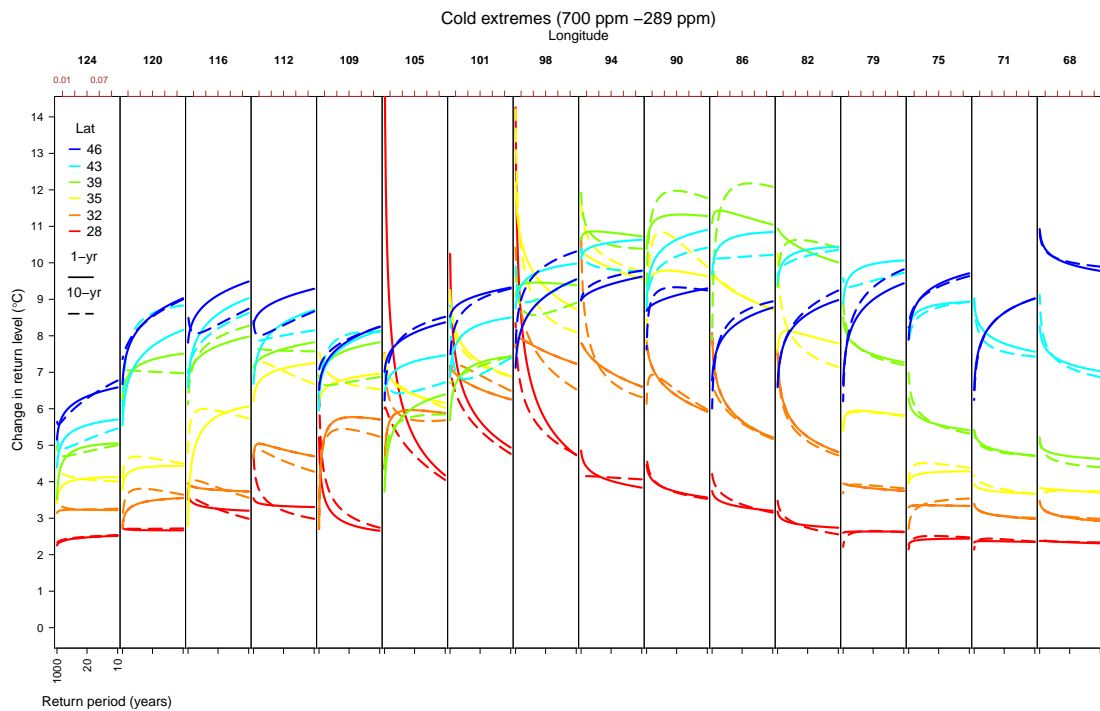


Figure C4. As in Fig. 8 (upper panel) but here comparing the estimated changes obtained from using annual minima (solid lines) vs. decadal minima (dashed lines). The results imply that annual blocks may be long enough to study the changes in cold extremes.

Appendix D: Model fitting procedures

In this work we fit the parameters of the extreme value distributions for the annual maxima/minima of each grid cell using maximum likelihood. For the numerical optimization to find these estimates, we use the `gev.fit` function in the `ismev` R package (Stephenson and Heffernan, 2014). Return levels are obtained by plugging the estimated GEV parameters into Eq. (3). When fitting GEV distributions from 20- and 50-year segments of model runs, we also compare estimates obtained by maximum likelihood (ML) to those obtained with an alternative fitting procedure, probability weighted moments (PWM). (See Hosking et al. (1985) for details on PWM.) The two fitting methods generally produce very similar estimates on 20-year segments in three example locations, but PWM does avoid occasional highly unreliable estimates seen in one location (TX) for cold extremes (Fig. D1).

We assess the uncertainties for GEV parameters and return levels by using bootstrap resampling. Both simple non-parametric bootstrap (Efron, 1979) and circular block bootstrap (Politis and Romano, 1992) were applied to annual extremes. Specifically, let $m_{i,j}$ be the annual extreme for year i and site j and $\mathbf{m}_i = \{m_{i,1}, \dots, m_{i,k}\}$ where k is the total number of sites. $\{\mathbf{m}_i\}_{i=1}^n$ is split into n ($n = 1000$ years in this study) overlapping temporal blocks of length b ($b = 1, 2, 5, 10$ years): years 1 to b will be block 1 (i.e., $\{\mathbf{m}_i\}_{i=1}^b$), years 2 to $b + 1$ will be block 2 and block 1000 is years 1000, 1, $\dots, b - 1$. From these n blocks, n/b blocks are drawn at random with replacement. Then aligning these n/b blocks will give the bootstrap observations. This approach allows us to provide plausible uncertainties for our estimates without having to model spatial dependencies or temporal dependencies for annual extremes within blocks. Standard errors for different block sizes show little difference, suggesting that extremes from one year to the next are nearly independent (Fig. D2).

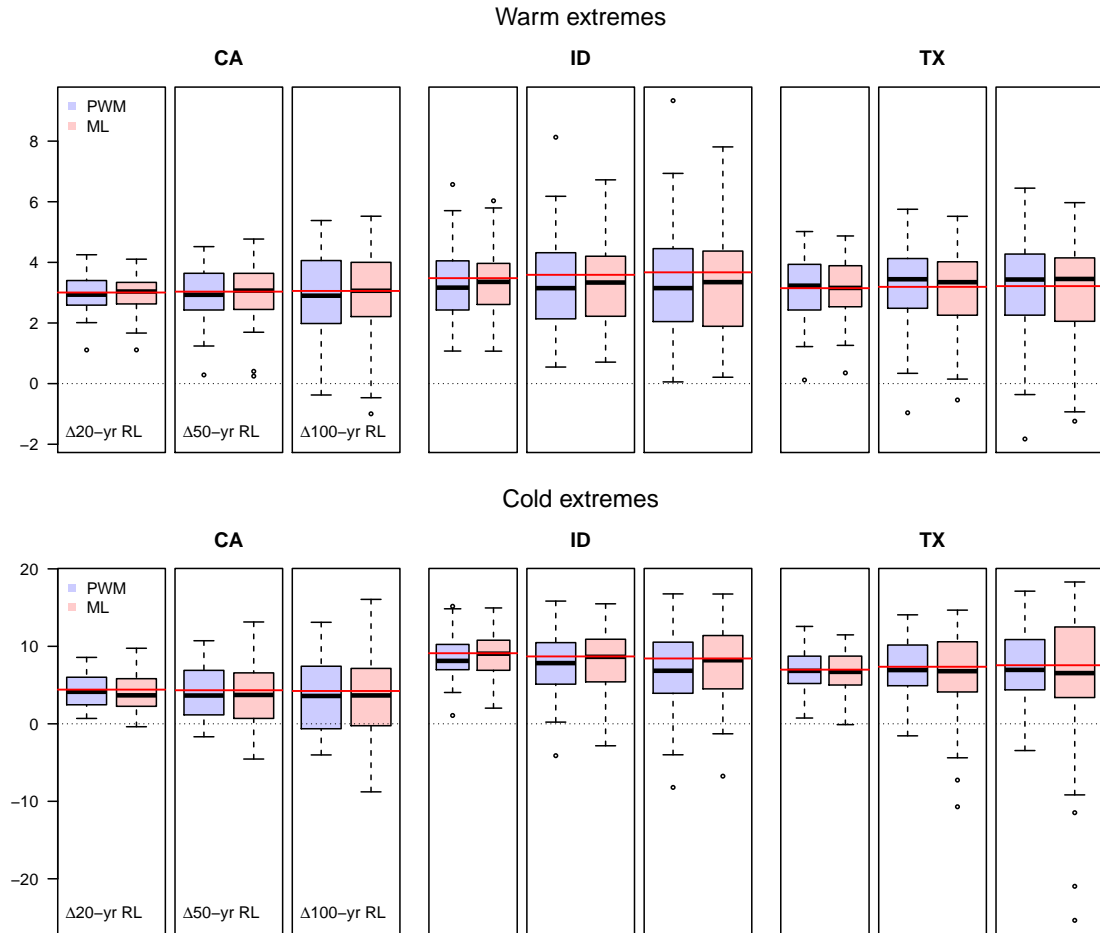


Figure D1. Boxplots of estimated changes in 20-, 50-, and 100-year return levels obtained with two estimation procedures, PWM (blue) and ML (red), for three example locations. Results are generally similar, but PWM does avoid extreme outliers produced by ML for cold extremes in one location (TX).

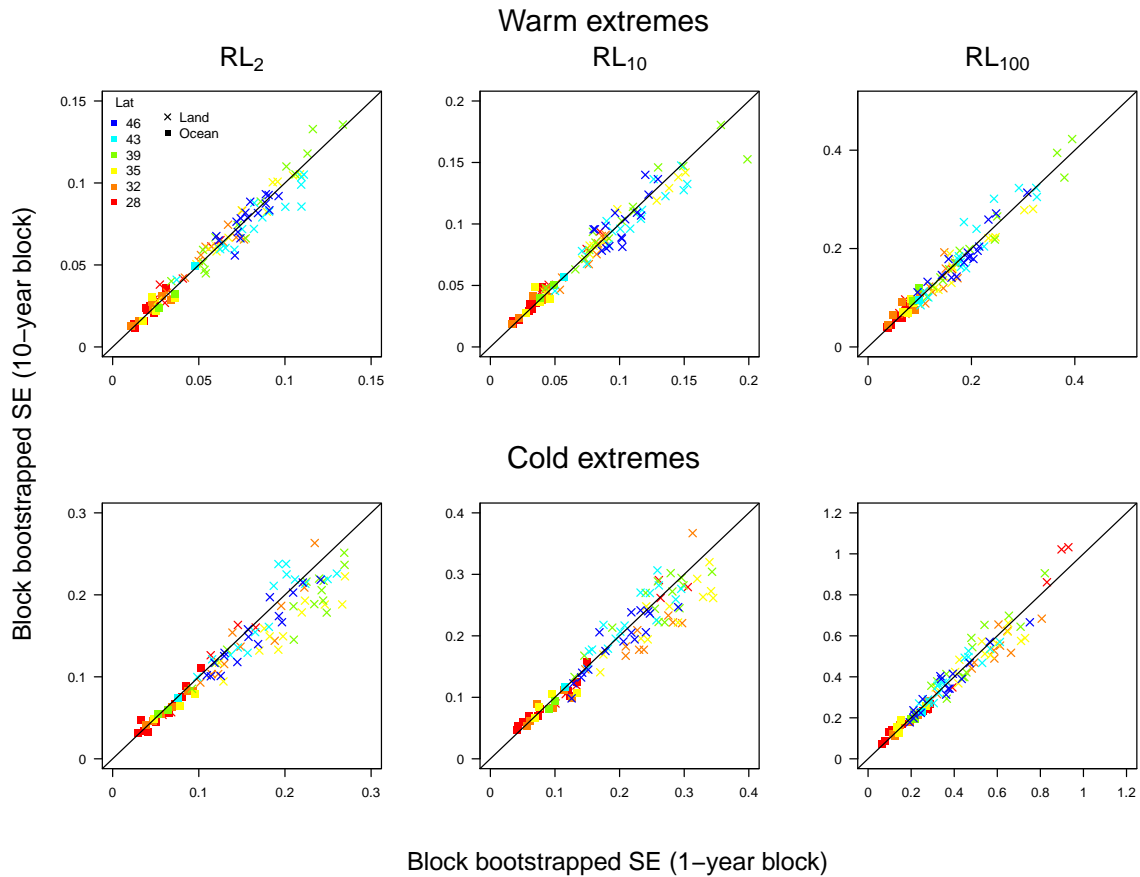


Figure D2. Assessment of estimation uncertainty to return levels using different block sizes for block bootstrap. The scatterplot shows block bootstrapped standard errors by resampling years (x axis) and decades (y axis) of 2-year (left), 10-year, and 100-year (right) return levels.

Appendix E: Relationships between changes in mean and changes in extremes

Here we explore the relationship of changes in the location parameter of extremes with changes in the corresponding seasonal means (Figs. E1 and E2). We find that the changes in the location parameter of warm extremes generally follow the mean changes during summer (see Fig. E1). Changes in the location parameter of cold extremes, however, are usually larger. For most inland locations, changes in cold extremes are amplified by more than 50% relative to changes in the average winter T_{\min} (Fig. E2). The greater shift in cold extremes is largely explained by the decrease in wintertime variability (Fig. 5).

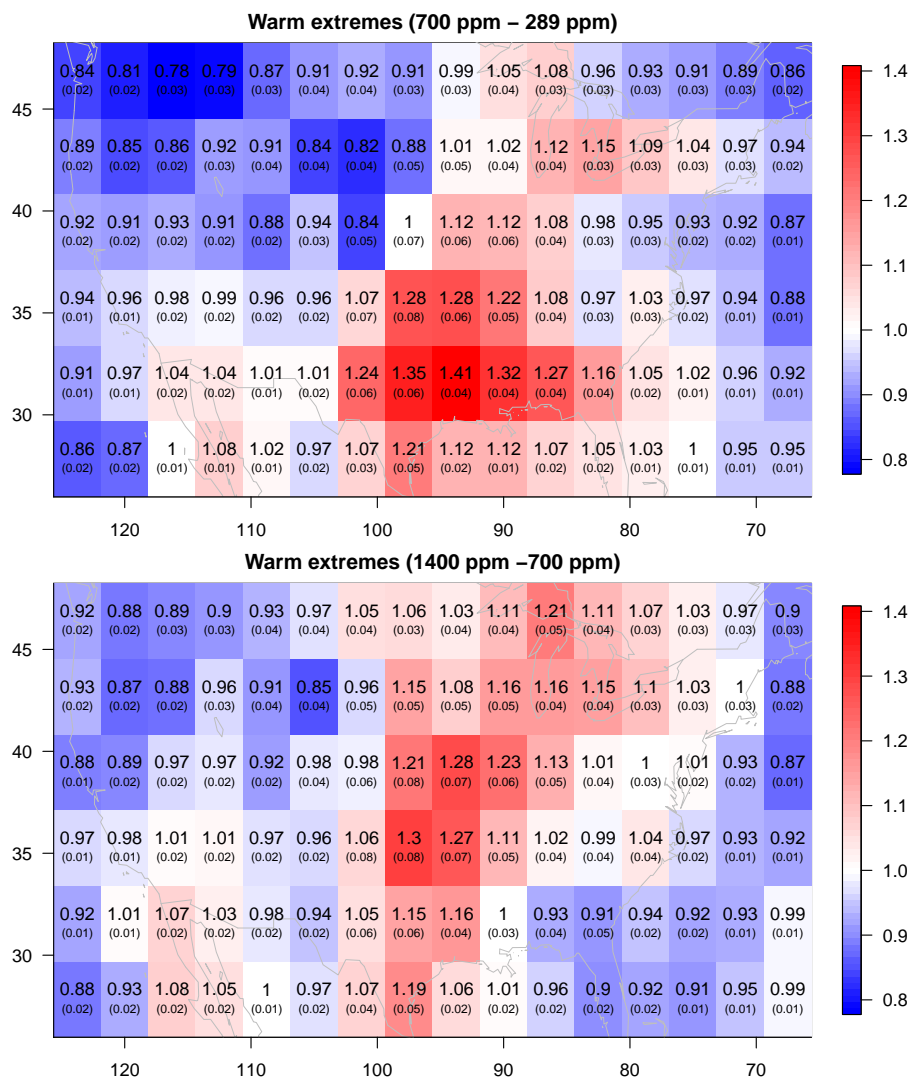


Figure E1. An investigation of the relationship of changes in the location parameter of warm extremes (i.e., $\Delta\mu$) with changes in summer means (Δm). Top: the ratio of changes in the location parameter of extremes to changes in means for the climate state from pre-industrial to 700 ppm. Bottom: the ratio for climate states 700 and 1400 ppm. Red (blue) grid cell location indicates that the shift of the GEV distribution is larger (smaller) than the shift of the overall distribution. Numbers on the top are the estimated ratios (i.e., $\Delta\hat{\mu}/\Delta m$) and numbers in parentheses are the bootstrapped standard errors for $\Delta\mu$. These ratios are generally near 1 in the contiguous United States.

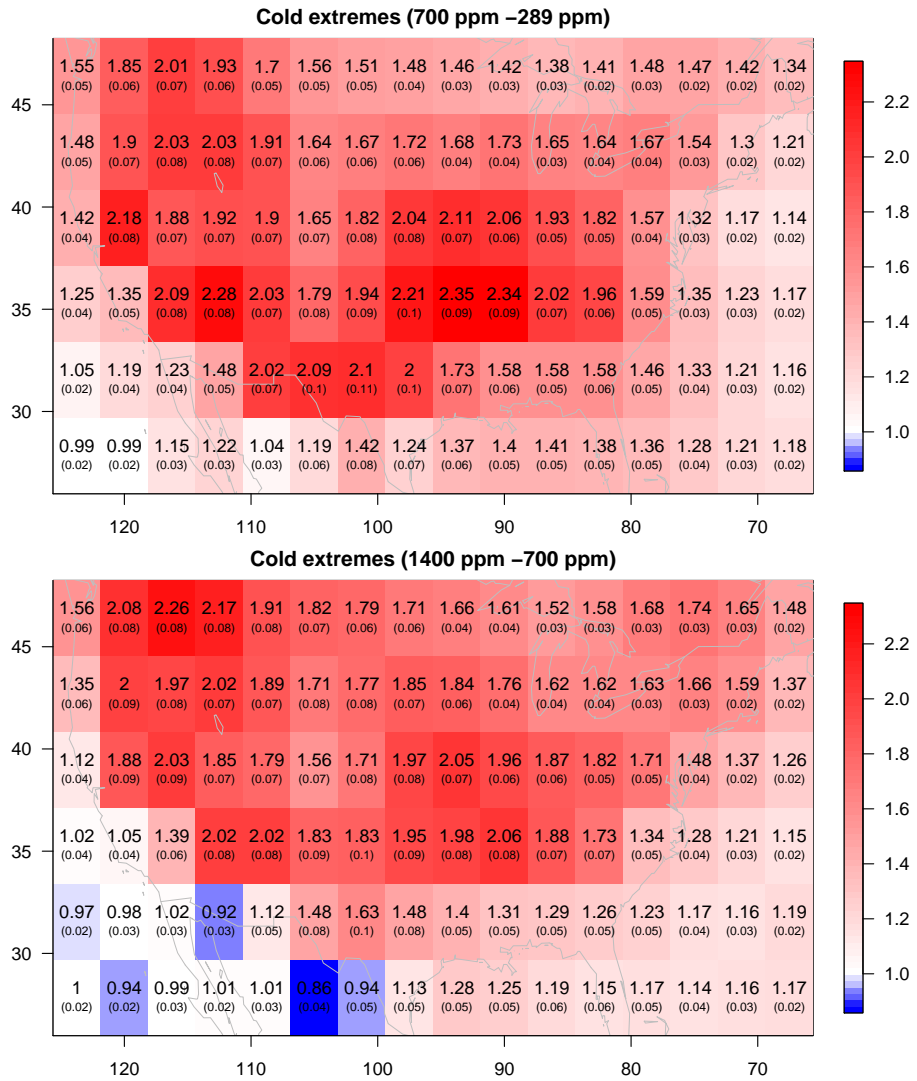


Figure E2. As in Fig. E1 but for changes in the location parameter of cold extremes to changes in winter means. These ratios are substantially greater than 1 nearly everywhere in the contiguous United States.

Appendix F: Changes in the shape parameter from pre-industrial to 1400 ppm

Here we present changes in the estimated shape parameter of extremes in the transition from pre-industrial to 1400 ppm climate states.

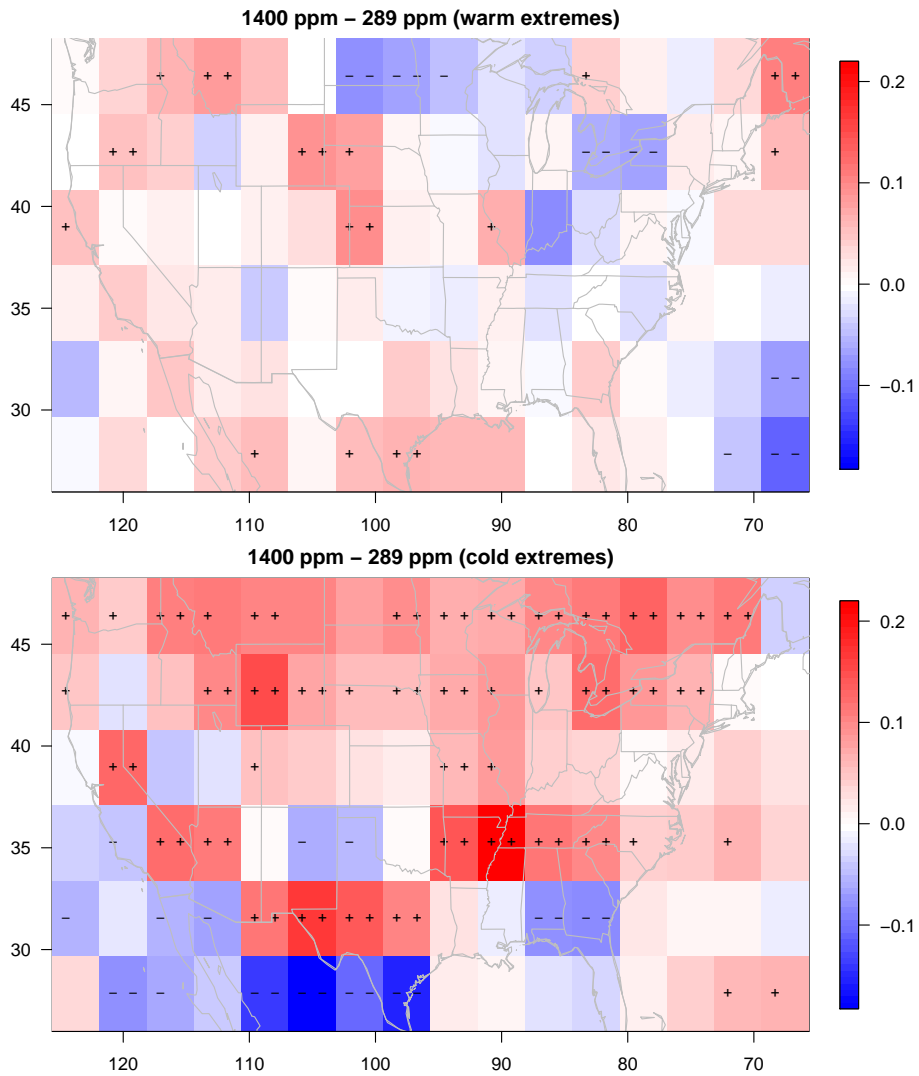


Figure F1. Changes in the estimated CCSM3 GEV shape parameter in the transition from pre-industrial to 1400 ppm climate states. Top: warm extremes. Bottom: cold extremes. Changes in the shape parameter are in general significant for inland cold extremes.

Acknowledgements. This work was conducted as part of the <https://www.statmos.washington.edu> Research Network for Statistical Methods for Atmospheric and Oceanic Sciences (STATMOS), supported by NSF award nos. 1106862, 1106974, and 1107046, and the <http://www.rdcep.org/>Center for Robust Decision Making on Climate and Energy Policy (RDCEP), supported by the NSF Decision Making Under Uncertainty program award no. 0951576.

Edited by: R. Donner

Reviewed by: two anonymous referees

References

- Alexander, L. V., Zhang, X., Peterson, T. C., Caesar, J., Gleason, B., Klein Tank, A., Haylock, M., Collins, D., Trewin, B., Rahimzadeh, F., Tagipour, A., Ambenje, P., Kumar, K., Rupa, Revadekar, J., Griffiths, G., Vincent, L., Stephenson, D. B., Burn, J., Aguliar, E., Brunet, M., Taylor, M., New, M., Zhai, P., Rusticucci, M., and Vazquez-Aguirre, J. L.: Global observed changes in daily climate extremes of temperature and precipitation, *J. Geophys. Res.-Atmos.*, 111, D05109, doi:10.1029/2005JD006290, 2006.
- Ballester, J., Giorgi, F., and Rodó, X.: Changes in European temperature extremes can be predicted from changes in PDF central statistics, *Climatic Change*, 98, 277–284, 2010.
- Barbosa, S. M., Scotto, M. G., and Alonso, A. M.: Summarising changes in air temperature over Central Europe by quantile regression and clustering, *Nat. Hazards Earth Syst. Sci.*, 11, 3227–3233, doi:10.5194/nhess-11-3227-2011, 2011.
- Beirlant, J., Goegebeur, Y., Segers, J., and Teugels, J.: *Statistics of Extremes: Theory and Applications*, John Wiley & Sons, New York, ISBN: 0471976474, 2004.
- Castruccio, S., McInerney, D. J., Stein, M. L., Liu Crouch, F., Jacob, R. L., and Moyer, E. J.: Statistical Emulation of Climate Model Projections Based on Precomputed GCM Runs*, *J. Climate*, 27, 1829–1844, 2014.
- Chavez-Demoulin, V. and Davison, A. C.: Generalized additive modelling of sample extremes, *J. Roy. Stat. Soc. C-App.*, 54, 207–222, 2005.
- Coles, S.: *An Introduction to Statistical Modeling of Extreme Values*, Springer, London, ISBN: 1852334592, 2001.
- Collins, W. D., Bitz, C. M., Blackmon, M. L., Bonan, G. B., Bretherton, C. S., Carton, J. A., Chang, P., Doney, S. C., Hack, J. J., Henderson, T. B., Kiehl, J. T., Large, W. G., McKenna, D. S., Santer, B. D., and Smith, R. D.: The community climate system model version 3 (CCSM3), *J. Climate*, 19, 2122–2143, 2006.
- Cooley, D. and Sain, S. R.: Spatial hierarchical modeling of precipitation extremes from a regional climate model, *J. Agr. Biol. Envir. St.*, 15, 381–402, 2010.
- Cooley, D., Nychka, D., and Naveau, P.: Bayesian spatial modeling of extreme precipitation return levels, *J. Am. Stat. Assoc.*, 102, 824–840, 2007.
- Craigmile, P. F. and Guttorp, P.: Can a regional climate model reproduce observed extreme temperatures?, *Statistica*, 73, 103–122, 2013.
- Davison, A. C. and Smith, R. L.: Models for exceedances over high thresholds (with discussion), *J. Roy. Stat. Soc. B*, 52, 393–442, 1990.
- de Haan, L. and Ferreira, A.: *Extreme Value Theory: an Introduction*, Springer, New York, ISBN: 0387239464, 2006.
- de Vries, H., Haarsma, R. J., and Hazeleger, W.: Western European cold spells in current and future climate, *Geophys. Res. Lett.*, 39, L04706, doi:10.1029/2011GL050665, 2012.
- Easterling, D. R., Meehl, G. A., Parmesan, C., Changnon, S. A., Karl, T. R., and Mearns, L. O.: Climate extremes: observations, modeling, and impacts, *Science*, 289, 2068–2074, 2000.
- Efron, B.: Bootstrap methods: another look at the jackknife, *Ann. Stat.*, 7, 1–26, 1979.
- Einmahl, J. H., Haan, L., and Zhou, C.: Statistics of heteroscedastic extremes, *J. Roy. Stat. Soc. B*, 78, 31–51, 2016.
- Fisher, R. A. and Tippett, L. H. C.: Limiting forms of the frequency distribution of the largest or smallest member of a sample, *Math. Proc. Cambridge*, 24, 180–190, 1928.
- Frías, M. D., Mínguez, R., Gutiérrez, J. M., and Méndez, F. J.: Future regional projections of extreme temperatures in Europe: a nonstationary seasonal approach, *Climatic Change*, 113, 371–392, 2012.
- Frich, P., Alexander, L., Della-Marta, P., Gleason, B., Haylock, M., Klein Tank, A., and Peterson, T.: Observed coherent changes in climatic extremes during the second half of the twentieth century, *Climate Research*, 19, 193–212, 2002.
- Fuentes, M., Henry, J., and Reich, B.: Nonparametric spatial models for extremes: application to extreme temperature data, *Extremes*, 16, 75–101, 2013.
- Gilleland, E. and Katz, R. W.: Analyzing seasonal to interannual extreme weather and climate variability with the extremes toolkit, in: 18th Conference on Climate Variability and Change, 86th American Meteorological Society (AMS) Annual Meeting, vol. 29, Citeseer, 29 January 2006.
- Gnedenko, B.: Sur la distribution limite du terme maximum d'une serie aleatoire, *Ann. Math.*, 44, 423–453, 1943.
- Gumbel, E. J.: *Statistics of extremes*, Columbia Univ. Press, New York, ISBN: 0231021909, 1958.
- Heaton, M. J., Katzfuss, M., Ramachandar, S., Pedings, K., Gilleland, E., Mannshardt-Shamseldin, E., and Smith, R. L.: Spatio-temporal models for large-scale indicators of extreme weather, *Environmetrics*, 22, 294–303, 2011.
- Holmes, C. R., Woollings, T., Hawkins, E., and de Vries, H.: Robust future changes in temperature variability under greenhouse gas forcing and the relationship with thermal advection, *J. Climate*, 29, 2221–2237, 2016.
- Hosking, J., Wallis, J. R., and Wood, E. F.: Estimation of the generalized extreme-value distribution by the method of probability-weighted moments, *Technometrics*, 27, 251–261, 1985.
- Hsing, T.: On tail index estimation using dependent data, *Ann. Stat.*, 19, 1547–1569, 1991.
- IPCC, 2013: *Climate Change 2013: The Physical Science Basis. Contribution of Working Group I to the Fifth Assessment Report of the Intergovernmental Panel on Climate Change*, edited by: Stocker, T. F., Qin, D., Plattner, G.-K., Tignor, M., Allen, S. K., Boschung, J., Nauels, A., Xia, Y., Bex, V., and Midgley, P. M., Cambridge University Press, Cambridge, United Kingdom and New York, NY, USA, 1535 pp., 2013.
- Katz, R. W., Parlange, M. B., and Naveau, P.: Statistics of extremes in hydrology, *Adv. Water Resour.*, 25, 1287–1304, 2002.

- Kharin, V. V. and Zwiers, F. W.: Changes in the extremes in an ensemble of transient climate simulations with a coupled atmosphere-ocean GCM, *J. Climate*, 13, 3760–3788, 2000.
- Kharin, V. V. and Zwiers, F. W.: Estimating extremes in transient climate change simulations, *J. Climate*, 18, 1156–1173, 2005.
- Kharin, V. V., Zwiers, F. W., Zhang, X., and Hegerl, G. C.: Changes in temperature and precipitation extremes in the IPCC ensemble of global coupled model simulations, *J. Climate*, 20, 1419–1444, 2007.
- Kharin, V. V., Zwiers, F., Zhang, X., and Wehner, M.: Changes in temperature and precipitation extremes in the CMIP5 ensemble, *Climatic Change*, 119, 345–357, 2013.
- Kunkel, K. E., Pielke Jr, R. A., and Changnon, S. A.: Temporal fluctuations in weather and climate extremes that cause economic and human health impacts: A review, *B. Am. Meteorol. Soc.*, 80, 1077–1098, 1999.
- Leadbetter, M. R., Lindgren, G., and Rootzén, H.: *Extremes and Related Properties of Random Sequences and Processes*, Springer, New York, ISBN: 0387907319, 1983.
- Lee, J., Li, S., and Lund, R.: Trends in extreme US temperatures, *J. Climate*, 27, 4209–4225, 2014.
- Leeds, W. B., Moyer, E. J., and Stein, M. L.: Simulation of future climate under changing temporal covariance structures, *Adv. Stat. Clim. Meteorol. Oceanogr.*, 1, 1–14, doi:10.5194/ascmo-1-1-2015, 2015.
- Naveau, P., Guillou, A., and Rietsch, T.: A non-parametric entropy-based approach to detect changes in climate extremes, *J. Roy. Stat. Soc. B*, 76, 861–884, 2014.
- NOAA: Billion-Dollar Weather and Climate Disasters: Overview, available at: <https://www.ncdc.noaa.gov/billions/> (last access: 16 June 2016), 2015.
- Parey, S., Dacunha-Castelle, D., and Hoang, T. H.: Mean and variance evolutions of the hot and cold temperatures in Europe, *Clim. Dynam.*, 34, 345–359, 2010.
- Parey, S., Hoang, T. T. H., and Dacunha-Castelle, D.: The importance of mean and variance in predicting changes in temperature extremes, *J. Geophys. Res.-Atmos.*, 118, 8285–8296, 2013.
- Pickands III, J.: Statistical inference using extreme order statistics, *Ann. Stat.*, 3, 119–131, 1975.
- Politis, D. N. and Romano, J. P.: A circular block-resampling procedure for stationary data, in: *Exploring the limits of bootstrap*, edited by: LePage, R. and Billard, L., 263–270, John Wiley, New York, 1992.
- Resnick, S. I.: *Extreme Values, Regular Variation, and Point Processes*, Springer, New York, ISBN: 9780387759531, 1987.
- Resnick, S. I.: *Heavy-Tail Phenomena: Probabilistic and Statistical Modeling*, Springer, New York, ISBN: 9780387242729, 2007.
- Shaby, B. A. and Reich, B. J.: Bayesian spatial extreme value analysis to assess the changing risk of concurrent high temperatures across large portions of European cropland, *Environmetrics*, 23, 638–648, 2012.
- Shi, P., Wang, B., Ayres, M. P., Ge, F., Zhong, L., and Li, B.-L.: Influence of temperature on the northern distribution limits of *Scirpophaga incertulas* Walker (Lepidoptera: Pyralidae) in China, *J. Therm. Biol.*, 37, 130–137, 2012.
- Smith, A. B. and Katz, R. W.: US billion-dollar weather and climate disasters: data sources, trends, accuracy and biases, *Nat. Hazards*, 67, 387–410, 2013.
- Smith, R. L.: Extreme value analysis of environmental time series: an application to trend detection in ground-level ozone, *Stat. Sci.*, 4, 367–377, 1989.
- Stephenson, A. and Heffernan, J.: *ismev: An Introduction to Statistical Modeling of Extreme Values*, Original S functions written by Janet E. Heffernan with R port and R documentation provided by Alec G. Stephenson., R package version 1.40, 2014.
- Sterl, A., Severijns, C., Dijkstra, H., Hazeleger, W., Jan van Oldenborgh, G., van den Broeke, M., Burgers, G., van den Hurk, B., Jan van Leeuwen, P., and van Velthoven, P.: When can we expect extremely high surface temperatures?, *Geophys. Res. Lett.*, 35, L14703, doi:10.1029/2008GL034071, 2008.
- Tebaldi, C., Hayhoe, K., Arblaster, J. M., and Meehl, G. A.: Going to the extremes, *Climatic change*, 79, 185–211, 2006.
- Wang, J., Han, Y., Stein, M. L., Kotamarthi, V. R., and Huang, W. K.: Evaluation of dynamically downscaled extreme temperature using a spatially-aggregated generalized extreme value (GEV) model, *Clim. Dynam.*, doi:10.1007/s00382-016-3000-3, 2016.
- Weed, A. S., Ayres, M. P., and Hicke, J. A.: Consequences of climate change for biotic disturbances in North American forests, *Ecol. Monogr.*, 83, 441–470, 2013.
- Westra, S., Alexander, L. V., and Zwiers, F. W.: Global increasing trends in annual maximum daily precipitation, *J. Climate*, 26, 3904–3918, 2013.
- Yeager, S. G., Shields, C. A., Large, W. G., and Hack, J. J.: The low-resolution CCSM3, *J. Climate*, 19, 2545–2566, 2006.
- Yee, T. W. and Stephenson, A. G.: Vector generalized linear and additive extreme value models, *Extremes*, 10, 1–19, 2007.
- Zhang, X. and Zwiers, F. W.: Statistical indices for the diagnosing and detecting changes in extremes, in: *Extremes in a Changing Climate*, edited by: AghaKouchak, A., Easterling, D., Hsu, K., Schubert, S., and Sorooshian, S., 1–14, Springer, Dordrecht, 2013.
- Zwiers, F. W. and Kharin, V. V.: Changes in the extremes of the climate simulated by CCC GCM2 under CO₂ doubling, *J. Climate*, 11, 2200–2222, 1998.