

## FORMULATION AND EVALUATION OF GRAPHENE GRAFTED CHITOSAN/POLYANILINE NANOCOMPOSITES FOR CONTROLLED RELEASE OF ANTICANCER DRUG DOXORUBICIN

SUCHISMITA MOHANTY<sup>1</sup>, SUBRATA SARANGI<sup>2</sup>, GOURI SANKAR ROY\*

<sup>1,2</sup>Department of Physics, Centurion University of Technology and Management, Odisha, <sup>2</sup>PG Department of Physics, College of Engineering and Technology, Bhubaneswar, Odisha  
Email: suchismitam547@gmail.com

Received: 16 Dec 2018, Revised and Accepted: 18 Mar 2019

### ABSTRACT

**Objective:** The purpose of the present study was to functionalized graphene (f-GE) grafted chitosan (CS)/Polyaniline (PANI) with Montmorillonite (MMT) was different feed ratio known as f-GE-g-(CS/MMT-PANI).

**Methods:** The prepared f-GE-g-(CS/MMT-PANI) was formulated using the solvent casting method. The prepared nanocomposites were characterized by X-Ray Diffraction (XRD), Fourier-transform infrared spectroscopy (FTIR), Scanning electron microscope (SEM), Thermogravimetric analysis (TGA), thermogravimetric (DTG) and swelling in stimulated in the different biological fluid. The model drug Doxorubicin (DOX) was used for controlled drug delivery purpose.

**Results:** From FTIR result was clearly demonstrated that the model drug DOX did not change in any molecular level at f-GE-(CS/MMT-PANI) (i.e. at <10 nm scale). Additionally, in DSC result, DOX was interacted with nanocomposites at scale >100 nm level. With CS as the carrier, 60% of the drug was released in SIF for the initial 120 min and this increased to 80–82% with f-GE-g-CS/MMT/PANI matrix. But in SGF, CS as the carrier, 46% of the drug was released in 140 min and this increased to 78% with f-GE-g-CS/MMT/PANI. *In vitro* drug release system was carried out by Korsmeyer Peppas's power law. DOX and other drugs like Doxorubicin (DOX) was presented an exceptional higher drug result in different pH medium.

**Conclusion:** It was observed that CS/MMT was decreasing less drug release rate compared to f-GE-g-(CS/MMT-PANI). So that it can be clearly understood that f-GE-g-(CS/MMT-PANI) grafted nanocomposites have enhanced drug release activity in different pH medium.

**Keywords:** Graphene, Chitosan, MMT, Nanocomposites, Doxorubicin, Drug delivery system

© 2019 The Authors. Published by Innovare Academic Sciences Pvt Ltd. This is an open access article under the CC BY license (<http://creativecommons.org/licenses/by/4.0/>)  
DOI: <http://dx.doi.org/10.22159/ijap.2019v11i3.31397>

### INTRODUCTION

Chitosan (CS) is a biopolymer which is used for different purpose like biomedical, cosmetics, pharmaceutical products etc. It is very popular in pharmaceutical and medical filed for its unique properties like biodegradable, non-toxic, biocompatible, antimicrobial activities etc. In the present research, it is used for drug delivery applications [1]. Most of the scientific research publications have been proved; CS can be used for oral drug delivery purpose. But its poor physical properties such as brittleness, poor solubility require improvement for more medical application particular in drug delivery field as carrier matrix. Many researchers have been reported that in chemical and biochemical routes will be possible to improve the expected properties. Among grafting procedure, it is easy to prepare and synthesis of modified chitosan polymer composites with biodegradable nature for different purpose [2].

The functionalized graphene acts as efficient nanofiller in polymer composites to improve its engineering properties and a small quantity of polymer functionalized graphene improve the mechanical, electronic, optical, thermal and magnetic properties significantly. The living radical polymerizations on graphene surface can also produce diverse polymeric architecture promoting graphene from a laboratory to important nanotechnological applications.

Chitosan nanocomposites have been well studied for drug delivery and other applications using MMT nanoclay. But limited studies have been made on chitosan grafted onto graphene for drug delivery purpose [2-6]. Generally the hydrophobicity and hydrophilicity nature of polymer is contributing a lot in controlling the drug release characteristics apart from its flexibility [7-10]. However, this experiment is focused on the preparation of chitosan nanocomposites grafted with graphene for controlled drug release of anticancer drug DOX in different pH medium.

In the present work, GE grafted CS/MMT-PANI to evaluate the feasibility of loading and release of DOX drug with applicable efficiency and to elucidate the effect of biopolymer addition and MMT clay addition on the rate of DOX drug release.

### MATERIALS AND METHODS

#### Materials

Chitosan (Mw = 110 kDa, deacetylation degree >90%) and graphene (GE) were obtained Himedia. Polyaniline, MMT and Doxorubicin (DOX) was purchased from sigma, India. All other chemicals used were of analytical grade which were commercially available.

#### Preparation of CH/MMT nanocomposites

Chitosan was dissolved in 2% v/v aqueous glacial acetic acid at a concentration of 2 Wt%. The prepared solution samples were subjected to centrifuging at 2000 rpm to remove the insoluble residual material [11]. In addition, MMT was swelled in 50 ml distilled water by magnetic stirring for 60 min at 30±1 °C. Then the prepared chitosan solution with chitosan/MMT Wt ratio of 1/1, 1/2 and 2/1, followed by stirring for 4 h under different temperature (40 °, 50 °, 60 ° and 70 °C.) Then, PANI (2% wt, respect to the solid concentration of matrix) was dispersed in an acetic acid solution (1% v/v) for 24 h and further treated by ultrasonication (Bandelin D-12,207, Germany) and added into polymeric suspension under agitation for 6 h. After that CS/MMT-PANI solutions were filtered and dried by vacuum at 70 °C for 48 h.

#### Synthesis of GE grafted with f-GE-g-(CS/MMT-PANI)

The GE-g-CS/MMT was prepared by the following procedure. CS/MMT-PANI was prepared in 1% (v/v) acetic acid. The prepared solution of GE (5.0 g) was added into nanocomposites (CS/MMT-PANI). The reaction mixture of solution was refluxed at 100 °C for 12 h and dialyzed with distilled water. Then the mixture of solution was lyophilized for preparation of f-GE-g-(CS/MMT-PANI) powder [11].

#### Preparation of DOX drug-loaded f-GE-g-CS/MMT (f-GE-g-CS/MMT-DOX)

Different masses of DOX (0.05, 0.1, 0.15 and 0.2 g) were dissolved with f-GE-g-CS/MMT-DOX sample, which was prepared under the optimum conditions of temperature and concentrations [12]. The

mixture was subjected to a magnetic stirring at different reaction temperatures (40 °C, 50 °C, 60 °C and 70 °C) for different times (0.5, 1, 2 and 4 h) to affect cross-linking.

### Characterization

#### Fourier transforms infrared (FTIR spectra)

The FTIR spectra were demonstrated on a Nicolet 8700 spectrometer, in the absorbance range in between 400–4,000  $\text{cm}^{-1}$ .

#### X-ray diffraction (XRD)

XRD instrument Rigaku, D/Max, 2,500 V, Cu- $\alpha$  radiation: 1.54056 Å was used for an experiment. The result was recorded at a temperature of 30 °C.

#### Scanning electron microscopy (SEM)

SEM of nanocomposites was demonstrated by S 4300 Hitachi, Illinois, USA. The prepared sample was placed into a specimen holder with a silver plate coated by palladium. At analysis time the accelerator potential was 10kV.

#### Thermogravimetry analysis (TGA)

TGA was performed on a thermal analyser (TA Instruments, SDT Q600) from 40–800 °C at a heating rate of 10 °C/min under nitrogen atmosphere.

#### Swelling studies

This study was performed in both simulated gastric fluid (SGF) and (simulated intestinal fluid (SIF) in phosphate buffer (PBS) at 37 °C

on copolymer pellets (100 mg, 2.55 mm thickness and 13 mm diameter). The sample was 25 mm diameter; 50 mm height which was immersed 20 ml phosphate buffer. The weights of the swelled sample at predetermined time intervals were calculated after wiping the mesh containing the swelled polymer with a tissue paper. Then a graph was drawn between the degree of swelling ( $= (W_t - W_0)/W_0$ ) and time, where  $W_t$  and  $W_0$  are the weights of the sample after and before swelling, respectively.

#### In vitro drug dissolution study

In vitro drug dissolution study was made by Veego Model in SGF and SIF at room temperature with 500 RPM. The amount of model drug released was estimated by UV spectrophotometer in the different time interval. The absorbance of pure DOX drug was calculated to be 254 nm.

#### Statistical analysis

The experimental data are measured by one-way analysis of variance (ANOVA). All data analysis was executed using the SPSS Statistics 17.0. All experimental data were introduced as a mean value with its standard deviation (mean $\pm$ SD). *P*-values less than 0.05 were recommended to be statistically significant.

### RESULT AND DISCUSSION

As shown in fig. 1(a,b) chitosan was first reacted with MMT and PANI in the presence of acetic acid to functionalize partial amino groups of the CS/MMT-PANI. Then CS/MMT-PANI was reacted with f-GE in the presence of acetic acid to functionalize partial amino groups of the chitosan with f-GE and obtained f-GE-g-(CS/MMT-PANI) and structure of Doxorubicin.

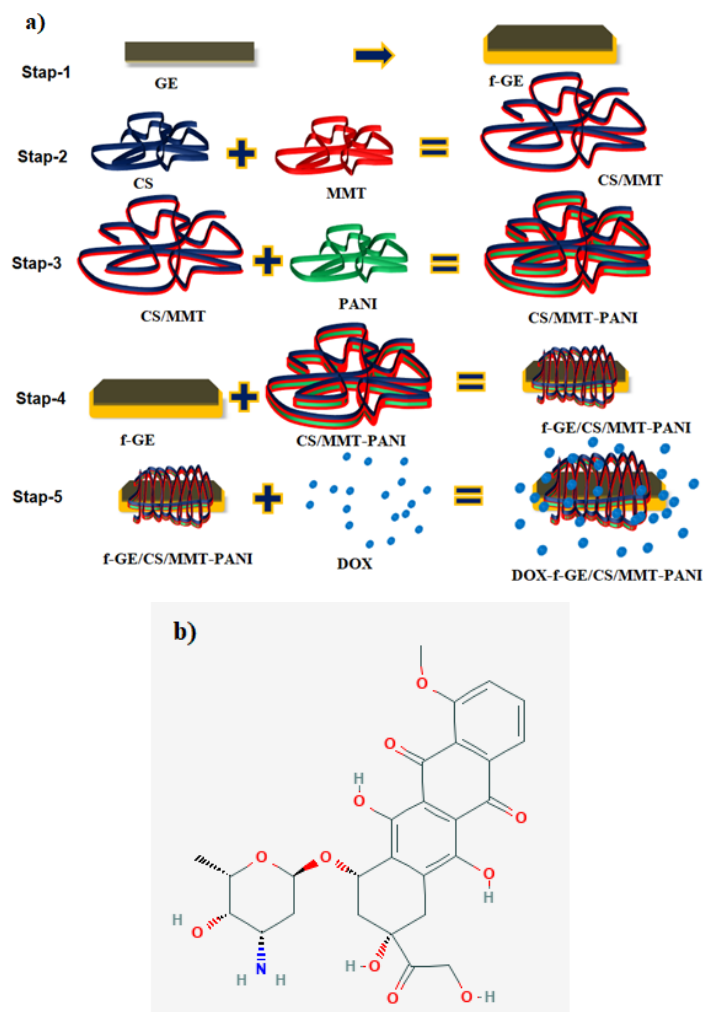


Fig. 1: Schematically representation of f-GE grafted CS/MMT-PANI nanocomposites for controlled release of anticancer drug DOX (a); structure of Doxorubicin (b)

### FTIR

Fig. 2 showed FTIR of pure CS, a broad-OH stretch absorption band between 3500 and 3100  $\text{cm}^{-1}$  and the aliphatic C-H stretch between 2345 and 3312  $\text{cm}^{-1}$ . The peak at 1505  $\text{cm}^{-1}$  represented the C-O stretch of the primary alcoholic group ( $-\text{CH}_2\text{-OH}$ ) [13].

CS/MMT-PANI, the broad peak at 3449  $\text{cm}^{-1}$  (interlayer and interlayer H-bonding upon stretching), 3425  $\text{cm}^{-1}$  (O-H stretching), 2413  $\text{cm}^{-1}$  (O-H bending), 943–560  $\text{cm}^{-1}$  (Si-O bending vibrations), 1132  $\text{cm}^{-1}$  (Si-O

stretching vibrations). At 1534  $\text{cm}^{-1}$  (protonated amine group) of CH is transformed towards the lower frequency value which indicated an electrostatic interaction between an amino group of CS and the negatively charged sites in the MMT structure [14].

The f-GE-g-CS/MMT/PANI showed both patterns of CS/MMT and GE. The expected peaks of the chitosan backbone was at 3449  $\text{cm}^{-1}$  and 2365  $\text{cm}^{-1}$  (-OH stretching and C-O stretching), respectively. Further, the absorption peak of the GE vibration of CS at 884.9  $\text{cm}^{-1}$  and the characteristic peak of GE at 967  $\text{cm}^{-1}$  both appeared.

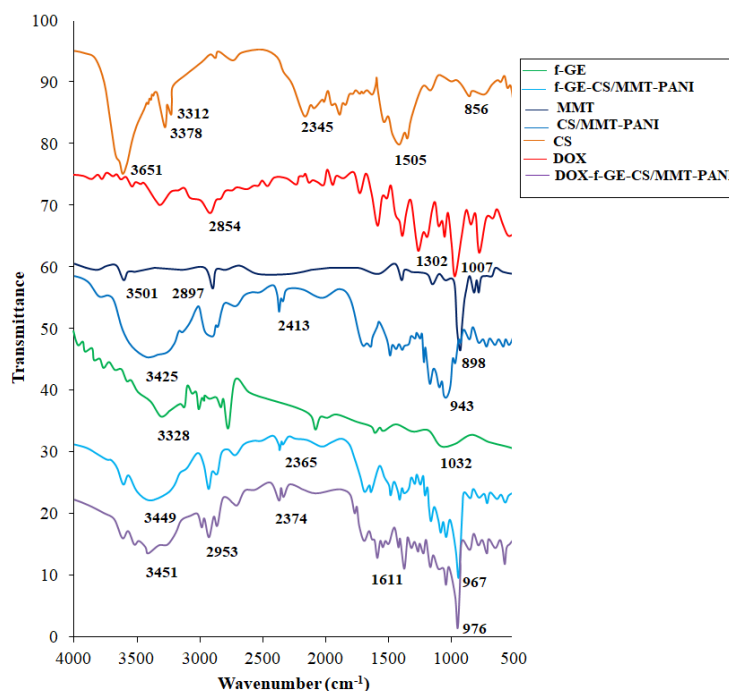


Fig. 2: FTIR of CS, DOX, MMT, CS/MMT-PANI, f-GE-g-CS/MMT, DOX-f-GE-g-CS/MMT

### XRD

Fig. 3 showed XRD of pure CS, a characteristic peak at  $2\theta = 18.95^\circ$  and MMT shows a peak at  $2\theta = 8.54^\circ$  in fig. 2b [13]. XRD spectra of f-GE-CS and f-GE-CS/MMT-PANI showed broad single peak pattern at

$2\theta$  values of  $19^\circ$ ,  $25^\circ$ ,  $37^\circ$ ,  $43^\circ$  and  $45^\circ$  respectively, indicating crystallinity and considerably more crystalline than chitosan. It can be hypothesized that the increase crystallinity of f-GE-g-CS and f-GE-g-CS/MMT is due to deformation of the strong bonds in the chitosan backbone as the amino groups are functionalized by f-GE [14].

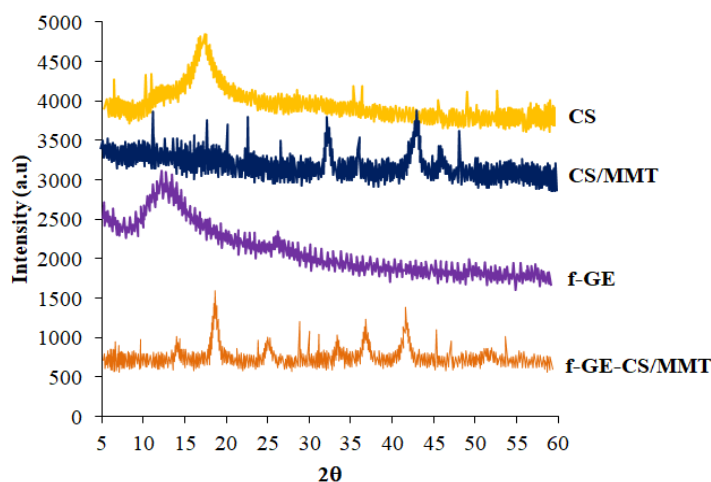


Fig. 3: XRD of CS, DOX, MMT, CS/MMT, f-GE-g-CS/MMT, DOX-f-GE-g-CS/MMT

### SEM

As shown in fig. 4, f-CS/MMT-PANI a nanocomposite was studied by SEM. CS was intercalated structures present due to the interaction of

MMT nanoclay and PANI within the polymer composite. The intercalated structure was found in GE-g-CS/MMT-PANI nanocomposites due to the electrostatic interaction of f-GE and CS/MMT-PANI, respectively.

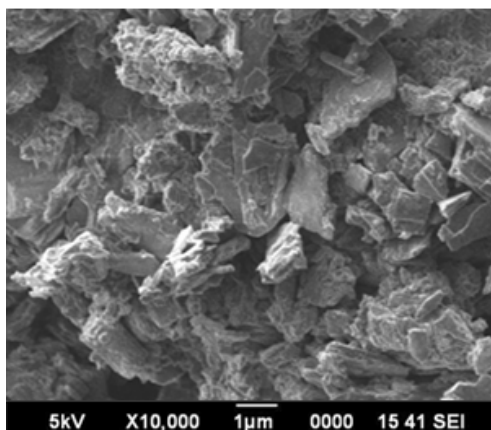


Fig. 4: SEM of f-GE-g-CS/MMT-PANI

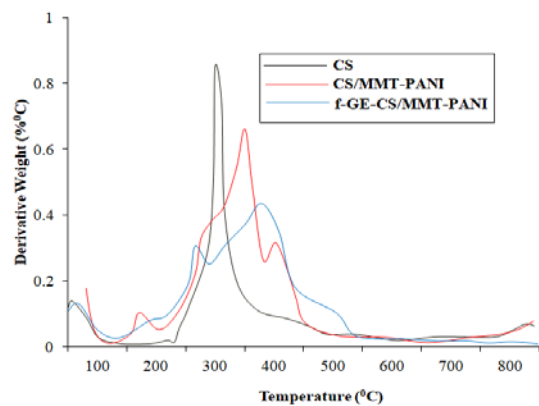
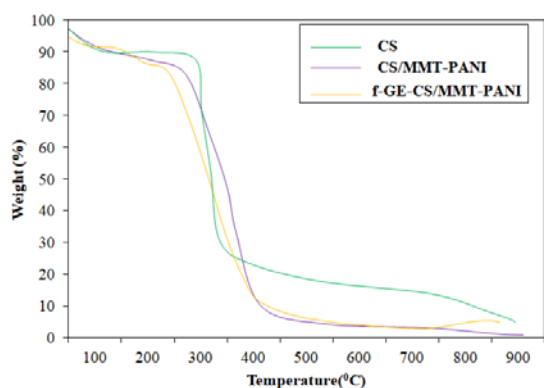


Fig. 5a: TGA of CS, CS/MMT and f-GE-g-CS/MMT, b: TG traces of CS, CS/MMT-PANI and GE-g-CS/MMT-PANI

**TG and DTG**

TG and DTG thermograms of CS and f-GE-g-CS/MMT-PANI recorded in nitrogen atmosphere are displayed in fig. 5a and b, respectively. The weight losses around 100 ° C in CS and f-GE-g-CS/MMT-PANI are assigned to loss of volatile impurities and moisture. The TG/DTG of graft copolymer displayed three step degradation in the temperature range between 150 °-900 °c. The weight loss in the temperature range 200 °-500 ° C with maximum weight loss around 273 ° C (51.34%) is attributed to chitosan backbone degradation [14]. The weight loss around 171 ° C is more likely to be attributed to degradation of f-GE fragment on the CS backbone with terminal double bonds. The weight losses observed around 273 ° and 381 ° C are due to onset degradations of CS moiety, and poly CS residue with saturated terminal ends and CS moiety, respectively. A degradation step noticed around 387 ° C in CS not seen in the copolymer and the

observed residual weights of 7.1% and 1.3% at 820 ° C in the TG traces of CS and CS and f-GE-g-CS/MMT, respectively, collectively reveals that the graft copolymer with a decreased thermal stability degrades faster compared to CS. This was also corroborated by the residual mass of 7.1% at 820 ° C in the TG traces of the polymer blend of CS and f-GE-g-CS/MMT (fig. 5a and b). The degradation behavior of the blend, CS and the graft copolymer are quite different indicating that the TG traces of graft copolymer displayed is not a physical mixture of CS and the homopolymers. Different thermal degradation behavior of the graft copolymer compared to that of the blend also revealed that the grafting had occurred [16, 17].

**Solubility study**

Fig. 7 exhibited the transmittance of f-GE-g-CS/MMT-PANI in water with various pH compared with chitosan and GE-g-CS at 5 mg/ml. It was found out that the water solubility of CS, f-GE-g-CS and f-GE-g-CS/MMT decreased with the increase of pH. CS, f-GE-g-CS, f-GE-g-CS/MMT showed excellent water solubility at low pH due to protonation of amino groups. At the pH range of 4.0-9.0, the f-GE-g-CS/MMT showed better water solubility than chitosan and f-GE-g-CS, which indicated enhances the solubility of chitosan.

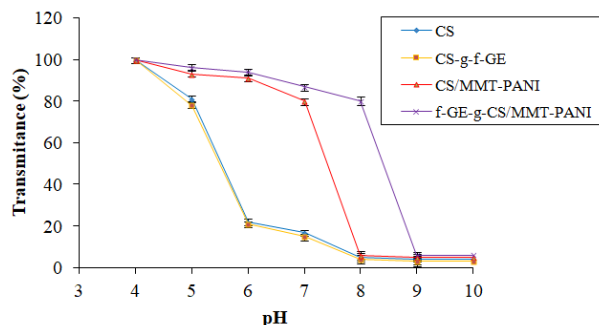


Fig. 7: Solubility study of CS, CS/MMT, CS-g-GE, GE-g-CS/MMT; n=3 and data are given in mean±SD

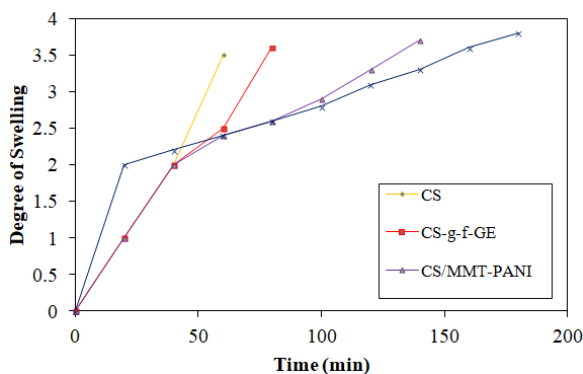
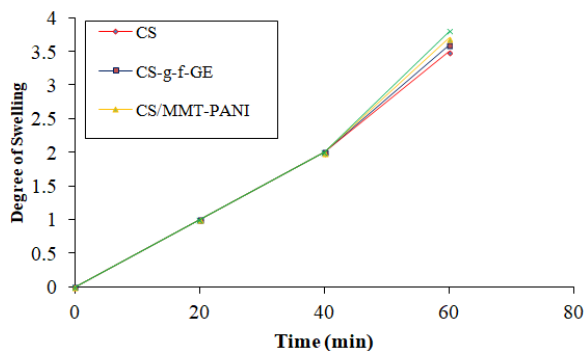


Fig. 8: Degree of swelling of graft copolymer in SGF (a) and SIF (b) at 37 ° C; n=3 and data are given in mean±SD

### In vitro swelling studies

To evaluate this effect, swelling studies were carried out with CS/MMT-PANI and f-GE-g-CS/MMT-PANI in SGF and SIF at 37 °C [15]. The degree of swelling in SGF and SIF for f-GE-g-CS/MMT-PANI polymers prepared with increasing concentrations of is given in fig. 8a and b. The degree of swelling was significantly different in SIF and SGF for a matrix of the typical composition. In SIF, the rate of swelling is more than that in SGF, and it attains the equilibrium value within 45 min. But in SGF the equilibrium swelling rate was attained only after 160 min. The greater extent of swelling in SIF compared to that in SGF may be more likely due to enhanced hydrogen bonding between GE-g-CS/MMT and SIF through the formation of carboxylate anion (-COO).

### Dissolution study

F-GE-g-CS/MMT matrices were synthesized with various concentrations of f-GE in the feed. Both in SIF and SGF the drug release rate was greater for pure CS than that observed for grafted CS/MMT-PANI [15]. This was attributed to the burst release of the drugs due to tablet breaking after immersing in biofluids. For the same drug, the release rate is more in SIF than in SGF (fig. 9a). This is more likely attributed to the greater degree of swelling of the matrix in SIF than in SGF. But grafting decreased the drug release in both the fluids. This is more likely attributed to the enhanced drug-polymer interaction through H-bonding between-COOH and-OH groups of f-GE-g-CS/MMT and-OH group of the drug as supported by DSC (fig. 6). With CS as carrier, 60% of the drug was released in SIF for the initial 120 min and this increased to 80-82% with f-GE-g-CS/MMT/PANI matrix. But in SGF, CS as the carrier, 46% of the drug was released in 140 min and this increased to 78% with f-GE-g-CS/MMT/PANI.

### Drug release mechanism

To understand and analyze the mechanism of *in vitro* drug release from nanocomposites by Korsmeyer-Peppas's equation [23, 24],

$$\frac{M_t}{M_\infty} = kt^n$$

Where  $M_t/M_\infty$  is the fractional release of drug at time 't' or fractional uptake of fluid in swelling in the absence of drug ( $M_t/M_\infty$ , amounts of

model drug released at the time 't' respectively) was used. The release mechanism of the drug was explained by Peppas equation. The slope of the linear plot  $\log M_t/M_\infty$  versus  $\log t$ , for drug release <50% gives the power law exponent (n) value. The equation  $n = 0.5$  (diffusion-Fickian controlled drug release) and  $n = 1$  (swelling-controlled drug release or non-Fickian) where is 'n' anomalous transport kinetics. The observed 'n' values for typical release profiles of DOX were <0.5, >0.5 and >1.0. These ranges of 'n' values indicate a combined mechanism of pure diffusion and non-Fickian for the drug release with the grafted GE-g-CS/MMT/PANI matrix both in SGF and SIF.

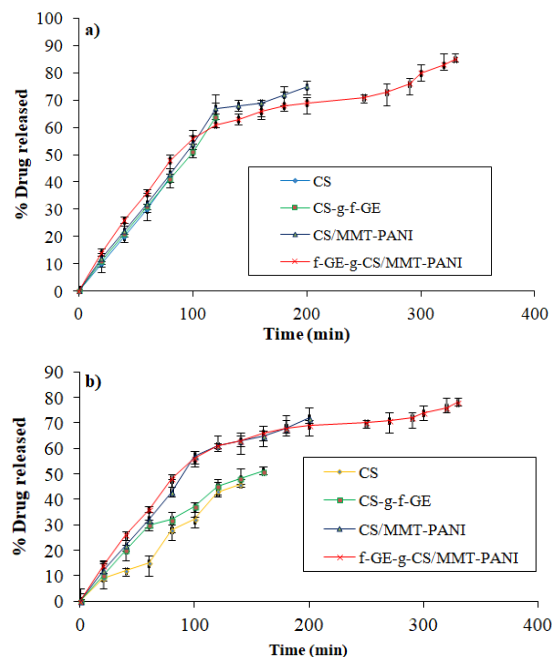


Fig. 9: Release profiles of model drug DOX in SIF (a) and SGF (b) at 37 °C, with graft copolymer carriers CS, CS/MMT, CS-g-GE, GE-g-CS/MMT/PANI; n=3 and data are given in mean±SD

Table 1: Release kinetic parameters of films of DOX (n=3)

Sample	Korsmeyer peppas	
	r <sup>2</sup>	n
CS	0.9761	0.4131
CS/MMT	0.9831	0.4221
CS-g-GE	0.9758	0.5143
GE-g-CS/MMT/PANI	0.9956	0.6152

\*CS molecular weight in kDa. n=3 and data are given in mean±SD, Where CS: Chitosan, GE: Graphene, PANI: Polyaniline, MMT: Montmorillonite, DOX: Doxorubicin

### CONCLUSION

The nanocomposites f-GE-g-CS/MMT has been synthesized and characterized for controlled released of DOX for oral drug delivery. The drug release rate was greater in SIF than in SGF due to enhanced matrix swelling in SIF and lower with f-GE-g-CS/MMT carrier compared to CH. In SGF the initial drug release rate was sluggish but started increasing rapidly after 120 min due to increased segmental mobility. Increasing the concentration of f-GE in the feed enhanced the drug release rate with the corresponding grafted CS as a carrier due to enhanced polymer-biofluid interaction.

### AUTHORS CONTRIBUTIONS

All the author have contributed equally

### CONFLICTS OF INTERESTS

All authors have none to declare

### REFERENCES

1. Majeti NV, Kumar RA. Review of chitin and chitosan applications. *React Funct Polym* 2000;46:1-27.
2. Marguerite R. Chitin and chitosan: properties and applications. *Prog Polym Sci* 2006;31:603-32.
3. Chen YZ, Huang YK, Chen Y. Novel nanoparticles composed of chitosan and  $\beta$ -cyclodextrin derivatives as the potential insoluble drug carrier. *Chin Chem Lett* 2015;26:909-13.
4. Ye YJ, Wang Y, Lou KY. The preparation, characterization, and pharmacokinetic studies of chitosan nanoparticles loaded with paclitaxel/dimethyl- $\beta$ -cyclodextrin inclusion complexes. *Int J Nanomed* 2015;10:4309-19.
5. Yang Y, Gao J, Ma X. Inclusion complex of tamibarotene with hydroxypropyl- $\beta$ -cyclodextrin: preparation, characterization, *in vitro* and *in vivo* evaluation. *Asian J Pharm Sci* 2016;12:187-92.
6. Matsubara K, Ando Y, Irie T. Protection afforded by maltosyl-beta-cyclodextrin against alpha-chymotrypsin-catalyzed

- hydrolysis of a luteinizing hormone-releasing hormone agonist, buserelin acetate. *Pharm Res* 1997;14:1401-5.
7. Manakker FVD, Vermonden T, Nostrum CFV. Cyclodextrin-based polymeric materials: synthesis, properties, and pharmaceutical/biomedical applications. *Biomacromolecules* 2009;10:3157-75.
  8. Maestrelli F, Gonzalez Rodriguez ML, Rabasco AM. Effect of preparation technique on the properties of liposomes encapsulating ketoprofen-cyclodextrin complexes aimed for transdermal delivery. *Int J Pharm* 2006;312:53-60.
  9. Petter RC, Salek JS, Sikorski CT. Cooperative binding by aggregated mono-6-(alkylamino)-betacyclodextrins. *J Am Chem Soc* 1989;112:3860-8.
  10. Yuan ZT, Ye YJ, Gao F. Chitosan-graft- $\beta$ -cyclodextrin nanoparticles as a carrier for controlled drug release. *Int J Pharm* 2013;446:191-8.
  11. Ebru G, Dilay P, Cüneyt H, Ünlü O. Synthesis and characterization of chitosan-MMT biocomposite systems. *Carbohydr Polym* 2007;67:358-65.
  12. Shahrzad F, Ali AM, Azadeh G, Mojtaba K. Electrospinning of PVA/chitosan nanocomposite nanofibers containing gelatin nanoparticles as a dual drug delivery system. *J Biomed Materials Res* 2015;103:3852-62.
  13. Kumari S, Rath PK. Extraction and characterization of chitin and chitosan from (Labeo rohita) fish scales. *Procedia Mater Sci* 2014;6:482-9.
  14. Ebru G, Dilay P, Pestreli C. Synthesis and characterization of chitosan-MMT biocomposite systems. *Carbohydr Polym* 2007;67:358-65.
  15. Thakur G, Singh A, Singh I. Chitosan montmorillonite polymer composites: formulation and evaluation of sustained release tablets of aceclofenac. *Sci Pharm* 2016;84:603-18.
  16. Naguib HF. Chemically induced graft copolymerization of itaconic acid onto sisal fibers. *J Polym Res* 2002;9:207-11.
  17. Isiklan N, Kursun F, Inal M. Graft copolymerization of itaconic acid onto sodium alginate using benzoyl peroxide. *Carbohydr Polym* 2010;79:665-72.
  18. Argin Soysal S, Kofinas P, Lo YM. Effect of complexation conditions on xanthan-chitosan polyelectrolyte complex gels. *Food Hydrocolloids* 2009;23:202-9.
  19. Singh DK, Ray AR. Graft copolymerization of 2-hydroxyethyl methacrylate onto chitosan films and their blood compatibility. *J Appl Polym Sci* 1994;53:1115-21.
  20. Cheung MK, Wang J, Zheng S, Mi Y. Miscibility of poly (epichlorohydrin)/poly (vinyl acetate) blends investigated with high-resolution solid-state  $^{13}\text{C}$  NMR. *Polymer* 2000;41:1469-74.
  21. Manley R, St J. Blends of cellulose and synthetic polymers. *Cellulose derivatives*. ACS Symp Ser 1998;688:253-64.
  22. Milosavljevic NB, Milasinovic NZ, Popovic IG, Filipovic JM, Krusic MTK. Preparation and characterization of pHsensitive hydrogels based on chitosan, itaconic acid and methacrylic acid. *Polym Int* 2011;60:443-52.
  23. Kormsmeier RW, Meerwall EV, Peppas NA. Solute and penetrant diffusion in swellable polymers. II. Verification of theoretical models. *J Polym Sci Part B: Polym Phys* 1986;24:409-34.
  24. Ritger PL, Peppas NA. Simple equation for description of solute release II. Fickian and anomalous release from swellable devices. *J Controlled Release* 1987;5:37-42.