


# The *BAFF/NFκB* axis is crucial to interactions between sorafenib-resistant HCC cells and cancer-associated fibroblasts

Luping Gao  | Yuji Morine  | Shinichiro Yamada | Yu Saito | Tetsuya Ikemoto | Kazunori Tokuda | Katsuki Miyazaki | Shouhei Okikawa | Chie Takasu | Mitsuo Shimada

Department of Surgery, Institute of Biomedical Sciences, Tokushima University Graduate School, Tokushima, Japan

## Correspondence

Yuji Morine, Department of Surgery, Institute of Biomedical Sciences, Tokushima University Graduate School, 3-18-15 Kuramoto-cho, Tokushima 770-8503, Japan. Email: ymorine@tokushima-u.ac.jp

## Funding information

Grant-in-Aid for Scientific Research, Grant/Award Number: 20K08957; Japanese Foundation for Multidisciplinary Treatment of Cancer; Japan Agency for Medical Research and Development, Grant/Award Number: JP19fk0210048 and JP20fk0210048

## Abstract

The tumor microenvironment affects malignancy in hepatocellular carcinoma (HCC) cells, and cancer-associated fibroblasts (CAFs) play an important role in the microenvironment. As recent studies indicated a difference between CAFs isolated from chemoresistant and non-resistant cancer tissues, therefore we investigated the intracellular mechanism in resistant HCC co-cultured CAFs and interactions between these CAFs with cancer cells. We established a sorafenib-resistant (SR) Huh7 (human HCC) cell line, and characterized it with cytokine assays, then developed CAFs by co-culturing human hepatic stellate cells with resistant or parental Huh7 cells. The 2 types of CAFs were co-cultured with parental Huh7 cells, thereafter the cell viability of these Huh7 cells was checked under sorafenib treatment. The SR Huh7 (Huh7<sup>SR</sup>) cells expressed increased B-cell activating factor (BAFF), which promoted high expression of CAF-specific markers in Huh7<sup>SR</sup>-co-cultured CAFs, showed activated *BAFF*, *BAFF-R*, and downstream of the *NFκB-Nrf2* pathway, and aggravated invasion, migration, and drug resistance in co-cultured Huh7 cells. When we knocked down *BAFF* expression in Huh7<sup>SR</sup> cells, the previously increased malignancy and *BAFF/NFκB* axis in Huh7<sup>SR</sup>-co-cultured CAFs reversed, and enhanced chemoresistance in co-cultured Huh7 cells returned as well. In conclusion, the *BAFF/NFκB* pathway was activated in CAFs co-cultured with cell-culture medium from resistant Huh7, which promoted chemoresistance, and increased the malignancy in co-cultured non-resistant Huh7 cells. This suggests that the *BAFF/NFκB* axis in CAFs might be a potential therapeutic target in chemoresistance of HCC.

## KEYWORDS

B-cell activating factor, cancer-associated fibroblasts, drug resistance, hepatocellular carcinoma, sorafenib

This is an open access article under the terms of the Creative Commons Attribution-NonCommercial License, which permits use, distribution and reproduction in any medium, provided the original work is properly cited and is not used for commercial purposes.

© 2021 The Authors. *Cancer Science* published by John Wiley & Sons Australia, Ltd on behalf of Japanese Cancer Association.

## 1 | INTRODUCTION

Activated cancer-associated fibroblasts (CAFs) are critical to tumor development.<sup>1</sup> CAFs may also affect cancer chemoresistance and cancer stem cells.<sup>2</sup> When isolated fibroblasts from chemoresistant breast cancer tissues are co-cultured with breast cancer cells, cancer cells reportedly sustain stemness and promote chemoresistance compared with cancer cells co-cultured with CAFs isolated from chemosensitive (CS) cells or non-co-cultured controls.<sup>3</sup> However, how the tumor microenvironment affects chemoresistance is still unclear.

B-cell activating factor (BAFF), which belongs to the tumor necrosis factor family, is well studied in B-cell biology and hematological diseases.<sup>4</sup> In hepatocytes, activated BAFF and its receptor (BAFF-R) decrease the expression of steatogenesis genes and increase steatosis.<sup>5</sup> The BAFF-BAFF-R axis has also been associated with cancer progression, apoptosis, and inflammation.<sup>6</sup> Reducing BAFF activity by antibodies that selectively bind to BAFF-R increases drug sensitivity in cancer cells.<sup>7</sup> The *NFκB* signaling pathway is downstream of BAFF.<sup>8</sup> Increasing negative regulator Kelch-like ECH-associated protein 1 (KEAP1) of Nuclear factor E2-related factor 2 (*Nrf2*), the *NFκB* pathway activates the *Nrf2/NADPH* quinone oxidoreductase 1 (*NQO1*) axis, which could also support drug resistance.<sup>9</sup> Moreover, a permanently activated *NFκB* pathway and persistent nuclear expression of its downstream factor, p65, in CAFs are important in maintaining the secretion of *IL6* and *IL8*, and the survival of pancreatic cancer stem cells.<sup>3</sup> Other studies have found the balance of location (nuclear or cytoplasmic) of p65 is controlled by post-translational modifications, and eventually affects *MMP9*, *FGF4*, and *IL8* expression.<sup>6,10</sup> Hepatocellular carcinoma (HCC) cells with enhanced p16/*IL6* pathways have low sensitivity to sorafenib; blocking *IL6* in chemoresistant HCC cells reportedly upregulates sorafenib cytotoxicity.<sup>4</sup>

Here, we established a sorafenib-resistant (SR) HCC cell line (Huh7<sup>SR</sup>), and found that CAFs stimulated by Huh7<sup>SR</sup> cells promoted invasion, migration, and chemoresistance in co-cultured CS HCC cells, by increased BAFF secretion. We then investigated the effect of HCC<sup>SR</sup> cells on CAF malignant potential, including SR development in CS HCC cells, by the BAFF-BAFF-R pathway.

## 2 | MATERIALS AND METHODS

### 2.1 | Cell culture

We purchased Huh-7 (human HCC) cells from the Riken Cell Bank. The Huh7 cells were cultured in DMEM (Life Technologies Japan Ltd.) containing 10% FBS (Life Technologies Japan Ltd.). We developed the SR Huh7 (Huh7<sup>SR</sup>) cell line by culturing the cells in DMEM with 8.0 μM sorafenib (sc-220125A; Santa Cruz Biotechnology), which was first dissolved in DMSO. The last concentration in DMSO was <0.1%. Lx2 human hepatic stellate cells were purchased from Merck Millipore (Tokyo, Japan). Huh7 and Huh7<sup>SR</sup> were cultured in DMEM

for 48 h, then the cell-culture medium was collected and centrifuged at 50g. Lx2 cells were co-cultured with this conditioned medium or DMEM at a 1:1 ratio for at least 48 h (Figure 2A). Activation of CAFs was confirmed using real-time-PCR (RT-PCR) of α-smooth muscle actin (α-SMA) and fibroblast activation protein (FAP).<sup>11</sup>

### 2.2 | Establishment of SR cell line

Huh7<sup>SR</sup> cells were isolated from Huh7 cells according to a protocol of continuous exposure to increasing sorafenib concentrations and stepwise selection. Every 3-4 d, cells were collected, passaged, and cultured in DMEM containing higher sorafenib concentrations. After development, cells could grow stably in the presence of sorafenib.

### 2.3 | siRNA transfection

Huh7<sup>SR</sup> cells were transfected with BAFF siRNA (Life Technologies Japan Ltd.) or negative control RNA (Applied Biosystems, Select Negative Control #1 siRNA) with 0.01 μmol/L with Invitrogen Lipofectamine RNAiMax Transfection Reagent (Invitrogen, Thermo Fisher Scientific Inc) following the manufacturer's instructions.

### 2.4 | Migration assay

We used transwell inserts (8-μm-pores, Corning) to evaluate cell migration. We seeded 0.5-1 × 10<sup>5</sup> Huh7 cells in the upside chamber; they were attached after c. 12 h. The upper chambers were lightly washed in PBS twice, and liquid in the upper chambers was replaced with a conditioned medium of Lx2, CAFs co-cultured with parental Huh7 or CAFs co-cultured with Huh7<sup>SR</sup>. The lower chambers were filled with the same conditioned medium (5% FBS). At 24 h after incubation, cells below the insert were fixed with 4% paraformaldehyde, stained with 0.2% crystal violet, and counted (stained cells in 5 random ×400 microscope fields).

### 2.5 | Cell wound-healing assay

Control and resistant Huh7 cells were plated in 6-well plates. When the confluency of the cells reached c. 80%-90%, a 10-μl pipette was used to scratch a c. 0.5-mm wound through the entire length of each well. We then changed the medium to DMEM, with or without sorafenib reagent, according to the test group. The wound was observed using a ×20 magnification microscope after 48 h.

### 2.6 | Colony formation assay

The parental Huh7 cells were co-cultured with supernatants from Lx2 cells, Huh7-co-cultured CAFs, or Huh7<sup>SR</sup>-co-cultured CAFs

for 48 h at 37°C; and then seeded into 60-mm cell-culture dishes (Thermo Scientific) and cultured in DMEM with 0.0  $\mu$ M (control), 3.0  $\mu$ M, or 5.0  $\mu$ M sorafenib for 3 wk. Cells were then fixed with paraformaldehyde (4%) and stained in 0.2% crystal violet. After washing, cell colony numbers were counted.

## 2.7 | RNA isolation and RT-PCR

We isolated total RNA with the RNeasy Mini Kit (Qiagen), and then synthesized complementary DNA with a reverse transcription kit (Applied Biosystems). RT-PCR was performed in triplicate using the StepOnePlus Real-Time PCR System (Applied Biosystems). Human *GAPDH* (4352339E, Applied Biosystems,) was used as an internal control.

## 2.8 | Enzyme-linked immunosorbent assay

*BAFF* secreted in conditioned medium was detected by the *BAFF* Quantikine ELISA kit (R&D Systems) following the manufacturer's instructions. Absorbance (450 nm, correction wavelength at 540 nm) was read by a plate reader.

## 2.9 | Immunofluorescence

We first cultured the cells in chamber slides (Matsunami, Lot No. 191029) for 48 h. We then took off the fend on the chamber slides, washed the cells in the bottom of the slides with PBS (4°C), and fixed those slides with 4% paraformaldehyde. After washing in PBS, slides were treated with Triton X-100 (Kanto Chemical Co., Inc Lot No. 308T1683), washed again, and incubated with anti-p65 primary antibody (Ab16502, Abcam) overnight at 4°C. Next day, we washed and incubated the slides in fluorophore-conjugated second antibody (Life Technologies Japan Ltd., Lot No. 1726587), and covered them in ProLong Gold antifade reagent with DAPI (Invitrogen). Finally, the slides were observed under a fluorescence microscope (Keyence Corporation). The integrated density of immunofluorescence was quantified using ImageJ software and analyzed with GraphPad Prism 5 software (GraphPad Software).

## 2.10 | Immunohistochemical staining

The specimens were selected from patients who had undergone hepatectomy after sorafenib treatment in our institute, and all patients provided written informed consent. This study was approved by the ethics committee of our hospital, and the written informed consent for the use of their resected tissues was obtained from all patients (Approval no. 2900-2). Sliced specimens were deparaffinized and rehydrated, then blocked with endogenous peroxidase. The samples

were incubated with anti-*BAFF* (Invitrogen, Thermo Fisher Scientific Inc), anti-*BAFF-R* (#s-32774, Santa Cruz Biotechnology), and anti-p65 (Ab16502, Abcam) primary antibodies for 1 h at room temperature. Then the slides were incubated with EnVision Dual Link System-HRP secondary antibody (Dako), treated with diaminobenzidine (Wako), and Mayer's hematoxylin (Muto Pure Chemicals Co. Ltd.). Lastly the samples were observed under a fluorescence microscope (Keyence Corporation).

## 2.11 | Statistical analysis

The research data were analyzed using GraphPad Prism 5 software (GraphPad Software) to conduct one-way ANOVA and Mann-Whitney *U* tests. All data are presented as the mean  $\pm$  SD. A *P*-value < .05 was considered significant.

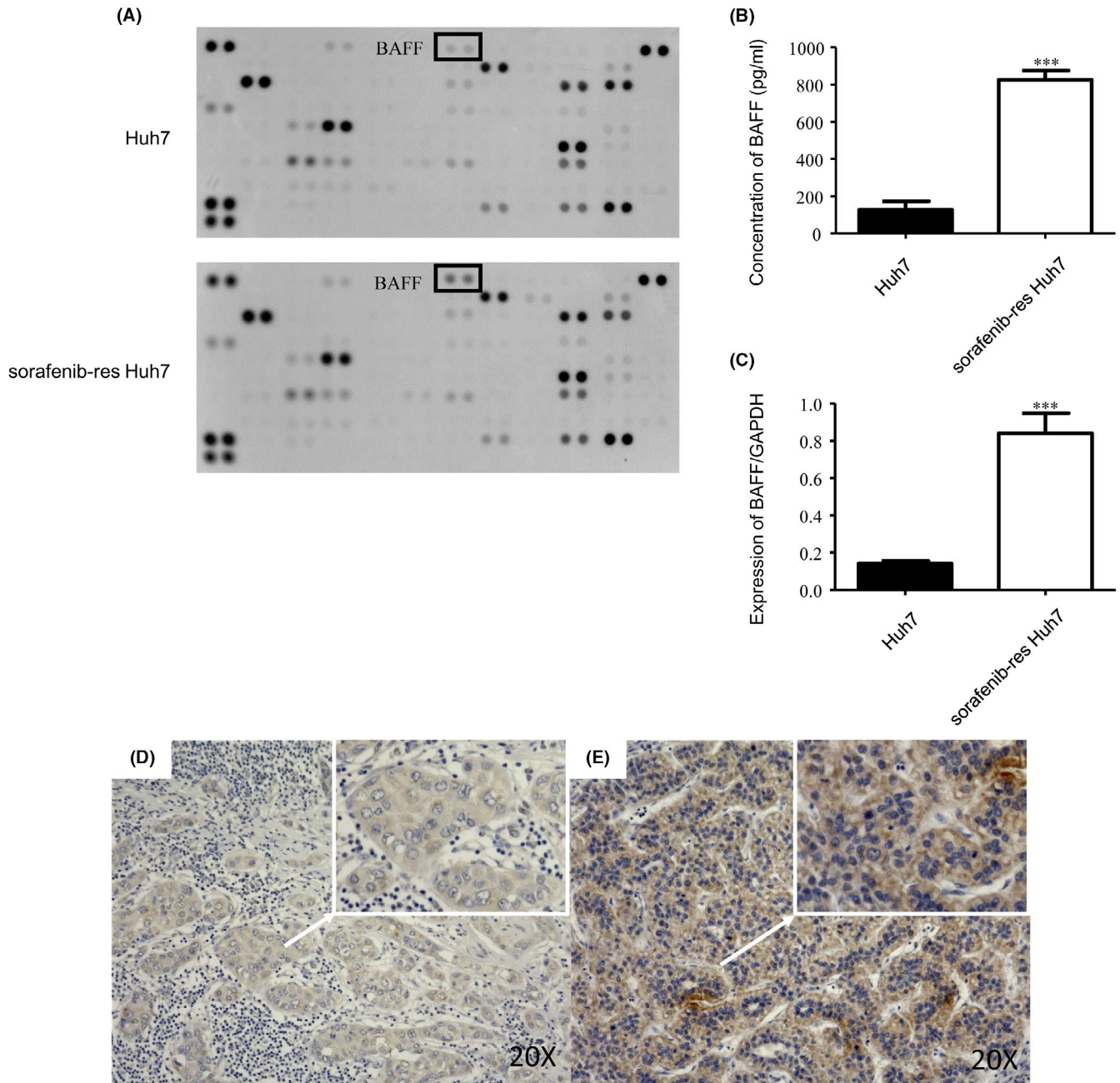
# 3 | RESULTS

## 3.1 | *BAFF* secretion was enhanced in Huh7<sup>SR</sup> cultured medium

After development, the Huh7<sup>SR</sup> cells were cultured in the conditioned medium containing 8.0  $\mu$ M sorafenib. To investigate differences between Huh7<sup>SR</sup>-co-cultured CAFs and CAFs co-cultured with parental Huh7 cells, we performed cytokine assays in cell-cultured medium from both Huh7 cell lines. The result suggested that, regarding the other cytokines, *BAFF* was much higher in the Huh7<sup>SR</sup> conditioned medium (Figure 1A). Then we confirmed that Huh7<sup>SR</sup> cells expressed greater *BAFF* mRNA and a much higher concentration of *BAFF* in conditioned medium than did parental Huh7 cells (Figure 1B,C). Expression of *BAFF* in the sorafenib-sensitive and SR specimens from patients who underwent hepatectomy after sorafenib treatment was detected by immunohistochemistry stain. The results showed that *BAFF* was markedly stronger in SR cases (Figure 1D,E).

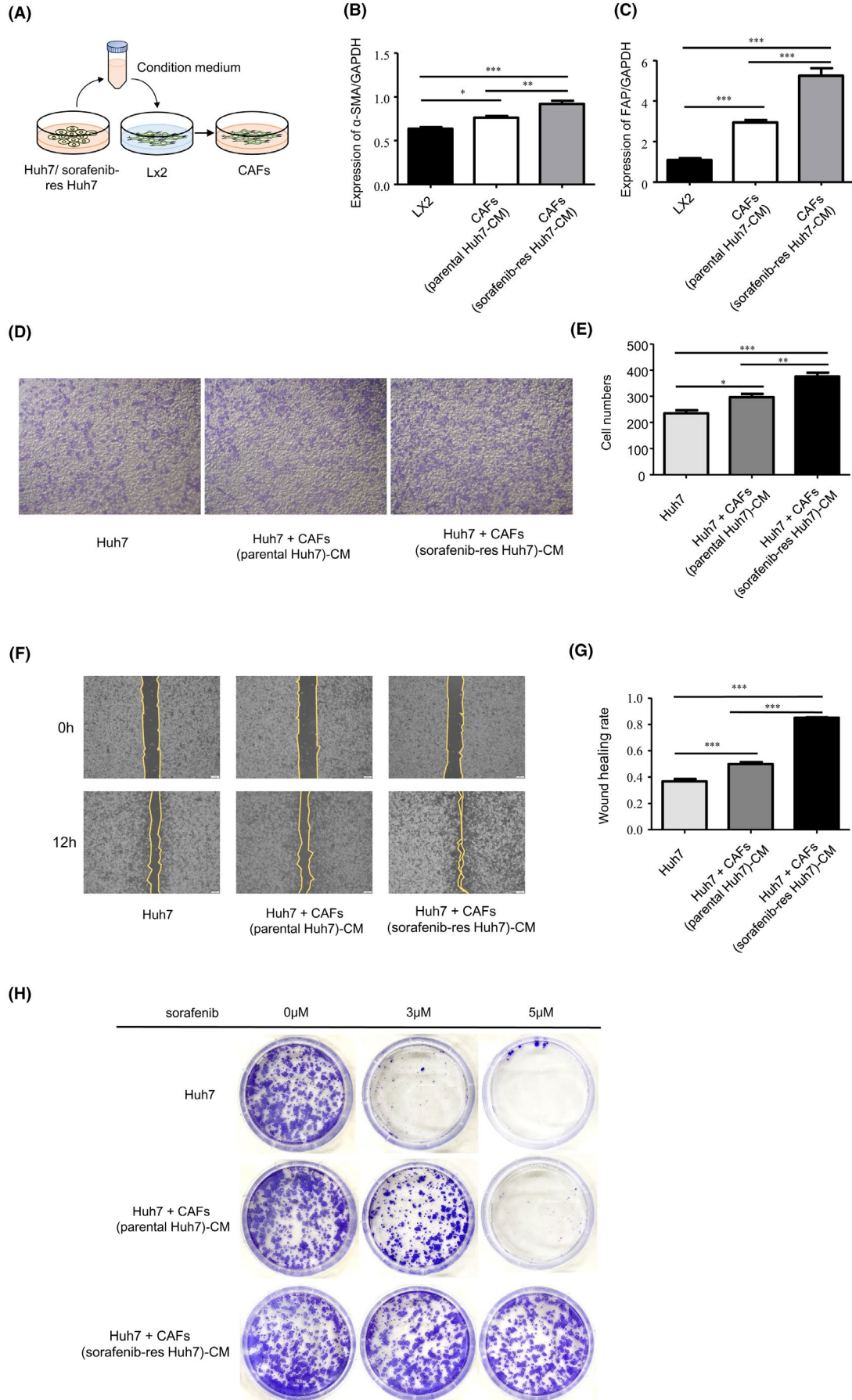
## 3.2 | Huh7<sup>SR</sup>-co-cultured CAFs promoted invasion, migration, and drug resistance in CS Huh7 cells

As CAFs reportedly modulate drug sensitivity in the tumor microenvironment,<sup>2</sup> we hypothesized that Huh7<sup>SR</sup>-co-cultured CAFs might affect chemosensitivity in HCC cells. In our study, Lx2 cells were cultured alone, or co-cultured with parental Huh7 or Huh7<sup>SR</sup> cells to create 2 types of CAFs (Figure 2A). Then we checked CAF-specific markers, such as  $\alpha$ -SMA and *FAP* in those groups. We found that  $\alpha$ -SMA and *FAP* expression levels were moderately higher in Huh7<sup>SR</sup>-co-cultured CAFs than in the CAFs co-cultured with non-resistant cells or Lx2 cells (Figure 2B,C). Next, we cultured parental Huh7 cells together with medium collected from Lx2 cells or the different types of CAFs, latterly performed transwell assay, wound-healing assays and the colony-forming assay (in medium with dose-dependent



**FIGURE 1** BAFF secretion is enhanced in the supernatant of sorafenib-resistant Huh7. A, Cytokine assay of cell-cultured medium in Huh7 and Huh7<sup>SR</sup>. B, ELISA test of BAFF secretion in cell-cultured medium of Huh7 and Huh7<sup>SR</sup> (n = 3). C, PCR quantification of BAFF expressed in Huh7<sup>SR</sup> cells compared with Huh7 cells, expressed for 48 h cultured in DMEM (10% FBS) (n = 4). D, E, Immunohistochemical stain of BAFF in sorafenib-sensitive and sorafenib-resistant HCC cases. Low expression of BAFF in sensitive HCC samples (D). High expression of BAFF in resistant HCC samples (E). (\*\*\*,  $P < .001$ .)

**FIGURE 2** Huh7<sup>SR</sup>-co-cultured CAFs promoted invasion, migration, and drug resistance in HCC cells. A, CAFs were stimulated with cell-culture medium (CM) of parental Huh7 or Huh7<sup>SR</sup>. B, C, PCR quantification of  $\alpha$ -SMA and FAP expressed in Lx2, Huh7-co-cultured CAFs and Huh7<sup>SR</sup>-co-cultured CAFs, 48 h cultured in DMEM (10% FBS) (n = 4). D, E, Invasion ability (D) was examined by transwell assay in Huh7, and Huh7 cells treated with the CM of Huh7-co-cultured CAFs or Huh7<sup>SR</sup>-co-cultured CAFs. Data analysis (E) was performed using GraphPad Prism 5 software (n = 4). F, G, Migration rate (F) of Huh7 treated with CM of Huh7, and Huh7 cells treated with the CM of Huh7-co-cultured CAFs or Huh7<sup>SR</sup>-co-cultured CAFs, performed by wound-healing assay. ImageJ was used for quantification (G) of migration rate (n = 3). H, Colony-forming assay was performed in Huh7, and Huh7 cells treated with the CM of Huh7-co-cultured CAFs or Huh7<sup>SR</sup>-co-cultured CAFs, incubated in DMEM (10% FBS, with 0, 3 or 5  $\mu$ M sorafenib). (\*,  $P < .05$ ; \*\*,  $P < .01$ ; \*\*\*,  $P < .001$ .)



sorafenib, at 0, 3 or 5  $\mu$ M). In transwell assays, Huh7<sup>SR</sup>-co-cultured CAFs promoted invasiveness and migration capacity compared with CAFs treated with parental Huh7 culture medium (CM) (Figure 2D-G), furthermore, Huh7<sup>SR</sup>-co-cultured CAFs enhanced drug resistance of HCCs in the colony-forming assay (Figure 2H).

### 3.3 | The BAFF-R-NF $\kappa$ B pathway was activated in Huh7<sup>SR</sup>-co-cultured CAFs

On the supposition of how BAFF expressed by Huh7<sup>SR</sup> cells influenced CAF-driven malignancy, we checked a BAFF-related pathway in CAFs. In Huh7<sup>SR</sup>-co-cultured CAFs, mRNA levels of BAFF and BAFF-R were even higher than CAFs co-cultured with the parental Huh7 subline or Lx2 cells (Figure 3A,B). One subset of CAFs reportedly expresses elevated levels of IL6 and IL8, and promotes chemoresistance and self-renewal of cancer stem cells by those cytokines.<sup>3</sup> As IL6 and IL8 are apparently involved in CAF-driven chemoresistance,<sup>12,13</sup> we examined IL6 and IL8 mRNA expression in CAFs, and found that expression levels were higher in Huh7<sup>SR</sup>-co-cultured CAFs than in Huh7-co-cultured CAFs or Lx2 cells (Figure 3C,D). These results may be associated with the NF $\kappa$ B pathway involved in anti-cancer drug resistance. Then we assessed the expression of nuclear NF $\kappa$ B p65, using immunofluorescence staining, and found that NF $\kappa$ B p65 nuclear expression in Huh7<sup>SR</sup>-co-cultured CAFs was notably stronger than in CAFs co-cultured with the parental Huh7 cells (Figure 3E,F). Then we examined BAFF-R and p65 expression in CAFs of SR and sorafenib-sensitive HCC tissues, the results stated that, in SR samples, BAFF-R was highly expressed on the cell membrane of CAFs in SR tissues, p65 level was also notably higher in the resistant cases (Figure 3G-J). BAFF is reported to induce NF $\kappa$ B-activated Nrf2 and its downstream molecule NQO1, which promotes survival and viability in chronic lymphocytic leukemia cells.<sup>9,14</sup> Therefore we checked gene expression of Nrf2 and downstream molecules, NQO1 and Heme oxygenase-1 (HO-1), in different types of CAFs, and found that Huh7<sup>SR</sup>-co-cultured CAFs expressed significantly higher levels of those genes (Figure 3L-N), which suggested that BAFF/NF $\kappa$ B-induced Nrf2 was activated in Huh7<sup>SR</sup>-co-cultured CAFs.

### 3.4 | Knocking down BAFF in Huh7<sup>SR</sup> cells reversed CAF stimulation

We wondered if BAFF in Huh7<sup>SR</sup> cells were responsible for the enhanced activity of Huh7<sup>SR</sup>-co-cultured CAFs, therefore siRNA was used to knock down BAFF expression in Huh7<sup>SR</sup> cells, which attenuated BAFF expression in these cells compared with control cells treated with nontargeting siRNA (Figure 4A). Then we co-cultured Lx2 cells with conditioned medium from parental Huh7, Huh7<sup>SR</sup>, or BAFF-knockdown Huh7<sup>SR</sup> cells, and compared them with non-co-cultured Lx2 cells. RT-PCR showed that BAFF and BAFF-R mRNA expression was decreased in CAFs from the BAFF-knockdown cells (Figure 4B,C), and the formerly increased nuclear p65 expression

was also reduced (Figure 4D,E). Nrf2, HO-1, and NQO1 were also decreased in the BAFF-knockdown-Huh7-co-cultured CAFs (Figure 4F-H). Upregulation of IL6 and IL8 expression was reversed as well (Figure 4I,J).

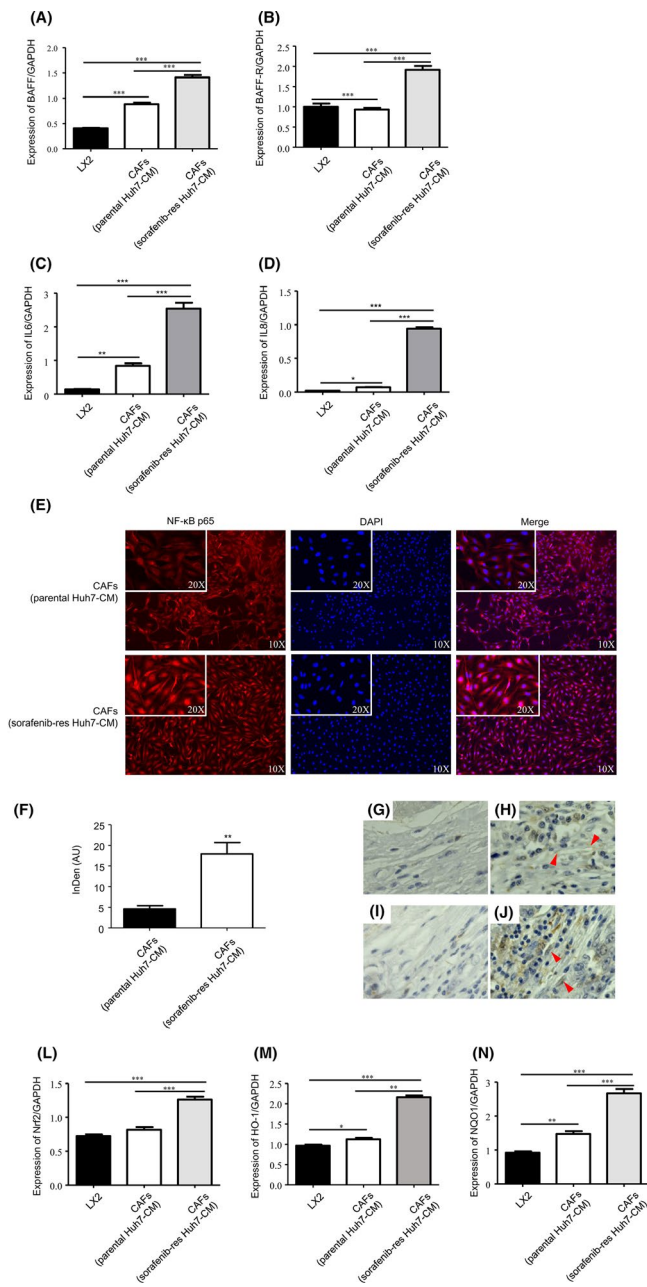
Lastly, we co-cultured Huh7 with different kinds of CAFs. The enhanced chemoresistance also partly returned in Huh7 which was co-cultured with BAFF-knockdown-Huh7<sup>SR</sup>-co-cultured CAFs, compared with Huh7 co-cultured with Huh7<sup>SR</sup>-co-cultured CAFs (Figure 5A). In transwell assays, the Huh7 cells co-cultured with BAFF-knockdown-Huh7<sup>SR</sup>-co-cultured CAFs were less invasive than ones co-cultured with Huh7<sup>SR</sup>-co-cultured CAFs (Figure 5B,C). In the wound-healing assay, the increased migration ability in Huh7 cells induced by Huh7<sup>SR</sup>-co-cultured CAFs was reversed by knocking down BAFF expression in resistant cells (Figure 5D,E). These results suggested that blocking BAFF in Huh7<sup>SR</sup> cells reduced the migration and invasion promotion ability and the specific gene expression of co-cultured CAFs.

## 4 | DISCUSSION

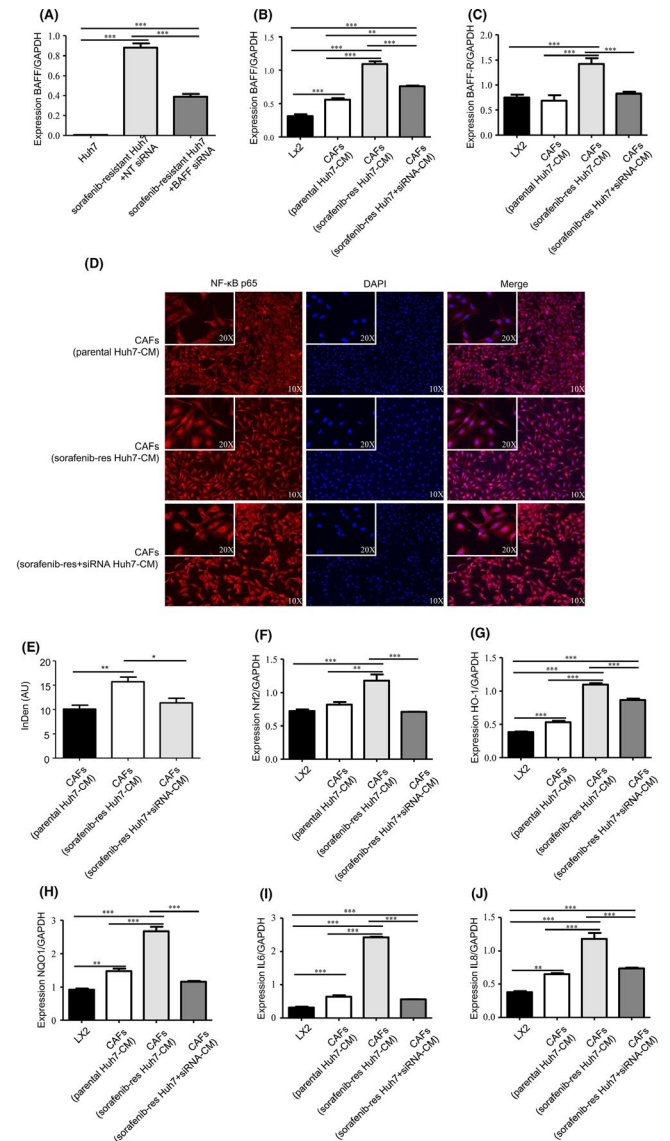
Sorafenib is an oral multi-kinase inhibitor and is a common systemic therapy for HCC. It decreases tumor initiation and progression by controlling cell proliferation and angiogenesis.<sup>15,16</sup> Unfortunately, its use is limited by a low sensitivity rate. In our study, we developed an SR HCC cell line, Huh7<sup>SR</sup>, and found that Huh7<sup>SR</sup> cells not only gained greater invasiveness and cell growth ability, but also expressed more BAFF than Huh7 cells. Furthermore, we found that CAFs co-cultured with resistant cells obtained stronger promotion ability with regards to invasiveness, migration, and chemoresistance in HCC cells compared with CAFs co-cultured with parental cells, by the BAFF and its receptor BAFF-R axes.

As a family member of the tumor necrosis cytokines, BAFF binds to 3 well-known receptors expressed on B cells: B-cell maturation antigen (BCMA), transmembrane activator and cyclophilin ligand interactor (TACI), and BAFF-R.<sup>17,18</sup> In engineered cells, BAFF binding to these receptors affects diverse signaling pathways, including NF $\kappa$ B nuclear translocation, p38 mitogen-activated kinase activation, and JNK phosphorylation for receptors.<sup>19,20</sup> Although BAFF is commonly associated with malignant B lymphocyte proliferation and differentiation,<sup>21-23</sup> it is also expressed in an array of normal and cancer cell lines and specimens.<sup>24-27</sup> In liver cancer, BAFF and its receptors BCMA and BAFF-R are reported to be expressed by HCC cell lines Hep3B, HepG2, and HCC tissues.<sup>28</sup> In our study, the protein and mRNA expression of BAFF in Huh7<sup>SR</sup> cells were further upregulated compared with non-resistant cells. Therefore, we investigated whether the enhanced BAFF/BAFF-R axis in Huh7<sup>SR</sup> cells affected CAF characteristics.

In the HCC microenvironment, hepatic stellate cells are regarded as the majority; they are activated by tumor cells to become CAFs, and express various cytokines to tumor progression and invasiveness in HCC.<sup>29-32</sup> CAFs also create the extracellular matrix structure, mediate tumor microenvironment metabolism,

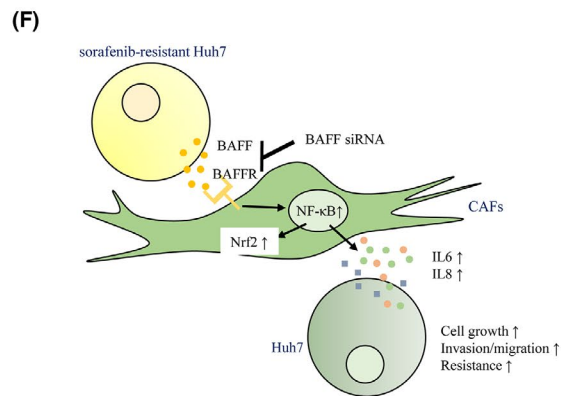
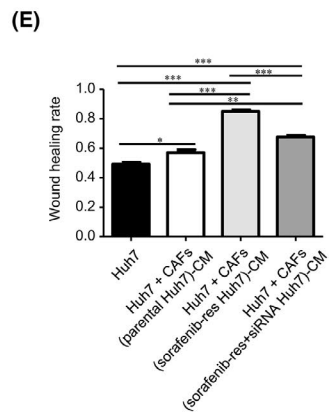
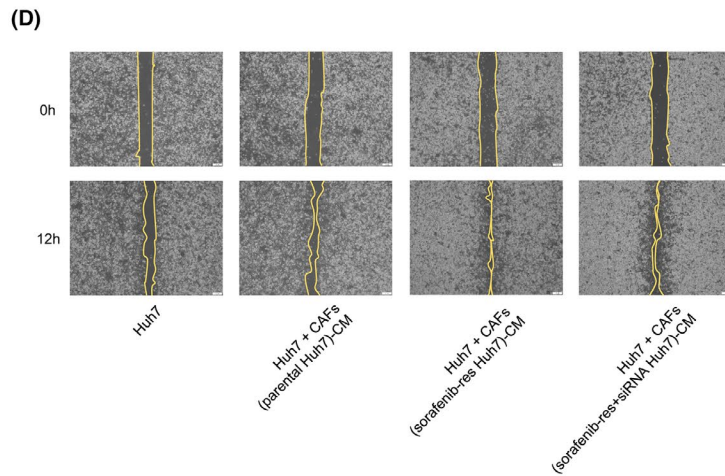
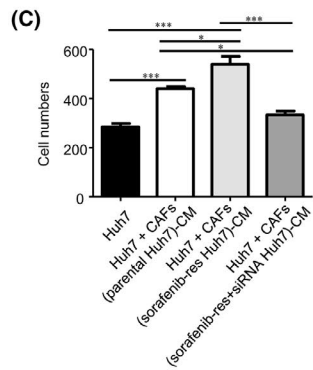
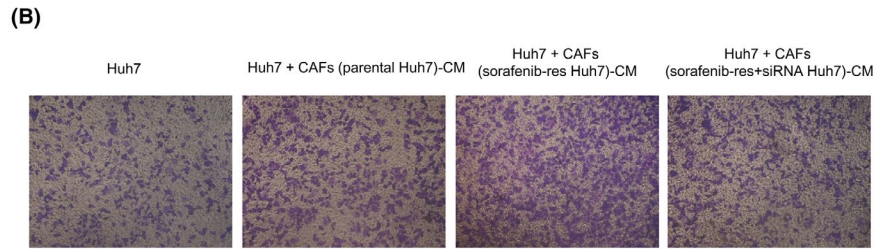
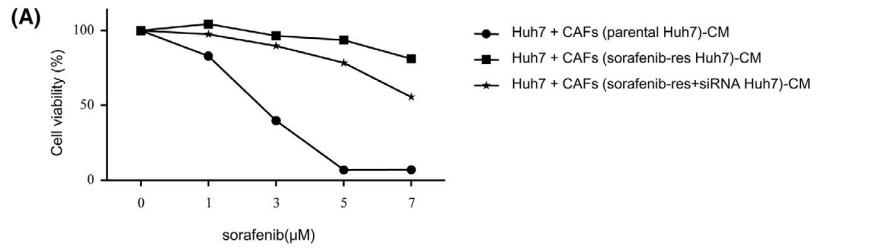


**FIGURE 3** BAFF/NFκB was activated in Huh7<sup>SR</sup>-co-cultured CAFs. A-D, PCR quantification of BAFF (A), BAFF-R (B), IL6 (C) and IL8 (D) expressed in Lx2 cells, Huh7-co-cultured CAFs, or Huh7<sup>SR</sup>-co-cultured CAFs, expressed for 48 h cultured in DMEM (10% FBS) (n = 4). E, Immunofluorescence staining of NFκB p65 expression in Lx2 cells, Huh7-co-cultured CAFs, or Huh7<sup>SR</sup>-co-cultured CAFs. F, Integrated density of NFκB p65 in cell nucleus has been quantified. (AU, arbitrary units). G-J, Immunohistochemical stain of BAFF-R and p65 in HCC specimens. Low expression of BAFF-R in sensitive HCC samples (G). High expression of BAFF-R on cell membrane in resistant HCC samples (H, arrowheads: CAFs). Low expression of p65 in sensitive HCC samples (I). High expression of p65 in resistant HCC samples (J, arrowheads: CAFs). L-N, PCR quantification of Nrf2 (L), HO-1 (M) and NQO1 (N) expressed in Lx2 cells, Huh7-co-cultured CAFs or Huh7<sup>SR</sup>-co-cultured CAFs, expressed for 48 h cultured in DMEM (10% FBS). (n = 4) (\*, P < .05; \*\*, P < .01; \*\*\*, P < .001.)



**FIGURE 4** Knocking down BAFF expression in resistant Huh7 reversed the activated BAFF/NFκB axis in co-cultured CAFs. A, PCR quantification of BAFF expression in Huh7, Huh7<sup>SR</sup> treated with nontargeting siRNA or BAFF siRNA, expressed for 48 h cultured in DMEM (10% FBS) (n = 4). B, C, PCR quantification of BAFF (B) and BAFF-R (C) expressed in Lx2 cells, Huh7-co-cultured CAFs, Huh7<sup>SR</sup>-co-cultured CAFs, and BAFF siRNA-treated Huh7<sup>SR</sup>-co-cultured CAFs, expressed for 48 h cultured in DMEM (10% FBS) (n = 4). D, Immunofluorescence staining of NFκB p65 expression in Lx2 cells, Huh7-co-cultured CAFs, Huh7<sup>SR</sup>-co-cultured CAFs, and BAFF siRNA-treated Huh7<sup>SR</sup> co-cultured CAFs, after co-culturing for 48 h. E, Integrated density of NFκB p65 in cell nucleus quantified in each group. AU, arbitrary units. (\*, P < .05; \*\*, P < .01). F-J, The mRNA expression of Nrf2 (F), HO-1 (G), NQO1 (H), IL6 (I) and IL8 (J) were quantified by PCR in Lx2 cells, Huh7-co-cultured CAFs, Huh7<sup>SR</sup>-co-cultured CAFs, and BAFF siRNA-treated Huh7<sup>SR</sup>-co-cultured CAFs, expressed for 48 h cultured in DMEM (10% FBS). (n = 4) (\*\*, P < .01; \*\*\*, P < .001.)

and contribute to chemotherapy resistance.<sup>33,34</sup> High IL6 expression in the tumor microenvironment can also promote cancer progression and chemoresistance,<sup>35</sup> but chemoresistance derived





**FIGURE 5** BAFF knocked down Huh7<sup>SR</sup>-co-cultured CAFs caused less malignancy and chemoresistance in Huh7. A, Cell viabilities of Huh7 co-cultured with cell-cultured medium of Huh7-co-cultured CAFs, Huh7<sup>SR</sup>-co-cultured CAFs, and BAFF siRNA-treated resistant Huh7-co-cultured CAFs were checked by CCK8, incubated in DMEM (10% FBS) with increasing dose of sorafenib. Data analysis was performed using GraphPad Prism 5 software. B, C, Invasion ability (B) of Huh7, and Huh7 treated with the CM of Huh7-co-cultured CAFs, Huh7<sup>SR</sup>-co-cultured CAFs, and BAFF siRNA-treated Huh7<sup>SR</sup>-co-cultured CAFs was detected by transwell assay. Data analysis (C) was performed using GraphPad Prism 5 software (n = 4). D, E, Migration rate (D) of above co-cultured Huh7 and Huh7 only was detected by wound-healing assay. ImageJ quantification (E) of migration rate (n = 3). F, Summary of BAFF/NFκB axis in the interaction between HCC cells with CAFs. (\*, P < .05; \*\*, P < .01; \*\*\*, P < .001.)

from CAFs has rarely been studied. In this context, we co-cultured the Huh7<sup>SR</sup> cells and parental Huh7 cells with Lx2 cells to develop 2 types of CAFs. These Huh7<sup>SR</sup>-co-cultured CAFs expressed high levels of CAF-specific markers. Furthermore, Huh7<sup>SR</sup> cells could induce CAFs highly tumor-promoting properties through the BAFF/BAFF-R axis.

The BAFF/BAFF-R axis has been observed to modestly activate canonical NFκB signaling, leading to rapid phosphorylation and nuclear translocation of NFκB p65,<sup>36,37</sup> and also enhanced expression of *Nrf2* and its related genes, such as *NQO1*.<sup>8</sup> We noticed that in Huh7<sup>SR</sup>-co-cultured CAFs, more BAFF-R was activated than usual, leading to upregulated the nuclear location of NFκB p65 in Huh7<sup>SR</sup>-co-cultured CAFs. The activated NFκB promoted *IL6* and *IL8* expression in Huh7<sup>SR</sup>-co-cultured CAFs and led to elevated tumor malignancy promotion ability of CAFs; *Nrf2* and its downstream molecules, *NQO1* and *HO-1*, were similarly increased. High *IL6* and *IL8* expression are reportedly related to chemoresistance in cancers.<sup>5,10,12</sup> When we treated Huh7 cells with CM from Huh7<sup>SR</sup>-co-cultured CAFs, the Huh7 cells developed greater invasiveness, and sorafenib resistance compared with Huh7 treated with the CM of Huh7-co-cultured CAFs or the Lx2 cells. However, when we knocked down BAFF in sorafenib-resistant cells, the previous effects in Huh7<sup>SR</sup>-co-cultured CAFs, the increased BAFF/NFκB activation and the upregulation of *Nrf2*, *HO-1*, *IL6*, and *IL8*, were all reversed. The enhanced chemoresistance in Huh7 cells co-cultured with Huh7<sup>SR</sup>-co-cultured CAFs also partly attenuated.

BAFF inhibitors are now widely used in clinical treatment. Belimumab, a kind of BAFF inhibitor approved by the FDA, is mainly used in rheumatologic disease, and some anti-BAFF antibodies as well as anti-BAFF-R antibodies are used for leukemia.<sup>38-40</sup> These inhibitors are potential agents against chemoresistance in nonhematologic solid tumors, such as HCC. Although this study only used in vitro experiments and tested resistant HCC cells, in the future we will develop animal models for drug-resistant HCC to investigate the role of BAFF in the tumor microenvironment in vivo.

Together, the current and previous findings support our hypothesis (Figure 5F). In the Huh7 cells, when resistance to sorafenib was strengthened, BAFF was also elevated, stimulating the CAFs to over-express a BAFF receptor, BAFF-R, and to activate the NFκB pathway including more p65 located in the nucleus. This resulted in the upregulation of *Nrf2* and its related genes, and promoted *IL6* and *IL8* expression by CAFs. This cascade could induce drug resistance in non-resistant HCC cells when treated by CM from HCC<sup>SR</sup>-co-cultured CAFs.

## ACKNOWLEDGMENTS

This study was partly supported by Research Program on Hepatitis from Japanese Foundation for Multidisciplinary Treatment of Cancer, the Japan Agency for Medical Research and Development (AMED) Grant Numbers JP19fk0210048 and JP20fk0210048, and Grant-in-Aid for Scientific Research (Grant no. 20K08957 to Yuji Morine).

## ETHICS APPROVAL AND CONSENT TO PARTICIPATE

Not applicable.

## PATIENT CONSENT FOR PUBLICATION

Not applicable.

## CONFLICT OF INTERESTS

We state the potential conflicts of interest with regard to our study as follows: Mitsuo Shimada received grant support from Bayer Yakuin, Co. Ltd., Japan. Other authors have no conflict of interest.

## ORCID

Luping Gao  <https://orcid.org/0000-0002-1889-268X>

Yuji Morine  <https://orcid.org/0000-0002-5889-9288>

## REFERENCES

1. Öhlund D, Handly-Santana A, Biffi G, et al. Distinct populations of inflammatory fibroblasts and myofibroblasts in pancreatic cancer. *J Exp Med*. 2017;214(3):579-596.
2. Vermeulen L, Felipe De Sousa EM, Van Der Heijden M, et al. Wnt activity defines colon cancer stem cells and is regulated by the microenvironment. *Nat Cell Biol*. 2010;12(5):468-476.
3. Su S, Chen J, Yao H, et al. CD10+ GPR77+ cancer-associated fibroblasts promote cancer formation and chemoresistance by sustaining cancer stemness. *Cell*. 2018;172(4):841-856.
4. Hengeveld PJ, Kersten MJ. B-cell activating factor in the pathophysiology of multiple myeloma: a target for therapy? *Blood Cancer J*. 2015;5:e282.
5. Kawasaki K, Abe M, Tada F, et al. Blockade of B-cell-activating factor signaling enhances hepatic steatosis induced by a high-fat diet and improves insulin sensitivity. *Lab Invest*. 2013;93(3):311-321.
6. Chou CH, Ho CM, Lai SL, et al. B-cell activating factor enhances hepatocyte-driven angiogenesis via B-cell CLL/lymphoma 10/nuclear factor-kappaB signaling during liver regeneration. *Int J Mol Sci*. 2019;20(20):5022.
7. McWilliams EM, Lucas CR, Chen T, et al. Anti-BAFF-R antibody VAY-736 demonstrates promising preclinical activity in CLL and enhances effectiveness of ibrutinib. *Blood Adv*. 2019;3(3):447-460.

8. Endo T, Nishio M,ENZLER T, et al. BAFF and APRIL support chronic lymphocytic leukemia B-cell survival through activation of the canonical NF- $\kappa$ B pathway. *Blood*. 2007;109(2):703-710.
9. Sanchez-Lopez E, Ghia EM, Antonucci L, et al. NF- $\kappa$ B-p62-NRF2 survival signaling is associated with high ROR1 expression in chronic lymphocytic leukemia. *Cell Death Differ*. 2020;27(7):2206-2216.
10. Kuo S-H, Yeh P-Y, Chen L-T, et al. Overexpression of B cell-activating factor of TNF family (BAFF) is associated with *Helicobacter pylori*-independent growth of gastric diffuse large B-cell lymphoma with histologic evidence of MALT lymphoma. *Blood*. 2008;112(7):2927-2934.
11. Zou B, Liu X, Gong Y, et al. A novel 12-marker panel of cancer-associated fibroblasts involved in progression of hepatocellular carcinoma. *Cancer Manag Res*. 2018;10:5303.
12. Niu L-L, Cheng C-L, Li M-Y, et al. ID1-induced p16/IL6 axis activation contributes to the resistant of hepatocellular carcinoma cells to sorafenib. *Cell Death Dis*. 2018;9(9):1-4.
13. Zender L, Rudolph KL. Keeping your senescent cells under control. *Aging*. 2009;1(5):438.
14. Kuo SH, Tsai HJ, Lin CW, et al. The B-cell-activating factor signaling pathway is associated with *Helicobacter pylori* independence in gastric mucosa-associated lymphoid tissue lymphoma without t (11;18)(q21; q21). *J Pathol*. 2017;241(3):420-433.
15. Aravalli RN, Steer CJ, Cressman EN. Molecular mechanisms of hepatocellular carcinoma. *Hepatology*. 2008;48(6):2047-2063.
16. Niu L, Liu L, Yang S, Ren J, Lai PB, Chen GG. New insights into sorafenib resistance in hepatocellular carcinoma: responsible mechanisms and promising strategies. *Biochim Biophys Acta Rev Cancer*. 2017;1868(2):564-570.
17. Lied GA, Berstad A. Functional and clinical aspects of the B-cell-activating factor (BAFF): a narrative review. *Scand J Immunol*. 2011;73(1):1-7.
18. Khlaiphuensin A, Chuaypen N, Sodsai P, et al. Decreased of BAFF-R expression and B cells maturation in patients with hepatitis B virus-related hepatocellular carcinoma. *World J Gastroenterol*. 2020;26(20):2645.
19. Yu G, Boone T, Delaney J, et al. APRIL and TALL-1 and receptors BCMA and TACI: system for regulating humoral immunity. *Nat Immunol*. 2000;1(3):252-256.
20. Hatzoglou A, Roussel J, Bourgeade M-F, et al. TNF receptor family member BCMA (B cell maturation) associates with TNF receptor-associated factor (TRAF) 1, TRAF2, and TRAF3 and activates NF- $\kappa$ B, elk-1, c-Jun N-terminal kinase, and p38 mitogen-activated protein kinase. *J Immunol*. 2000;165(3):1322-1330.
21. Benson MJ, Elgueta R, Noelle RJ. B cell survival: an unexpected mechanism of lymphocyte vitality. *Immunol Cell Biol*. 2008;86(6):485-486.
22. Novak AJ, Bram RJ, Kay NE, Jelinek DF. Aberrant expression of B-lymphocyte stimulator by B chronic lymphocytic leukemia cells: a mechanism for survival. *Blood*. 2002;100(8):2973-2979.
23. Novak AJ, Darce JR, Arendt BK, et al. Expression of BCMA, TACI, and BAFF-R in multiple myeloma: a mechanism for growth and survival. *Blood*. 2004;103(2):689-694.
24. Sun B, Wang H, Wang X, et al. A proliferation-inducing ligand: a new biomarker for non-small cell lung cancer. *Exp Lung Res*. 2009;35(6):486-500.
25. Pelekanou V, Notas G, Theodoropoulou K, et al. Detection of the TNFSF members BAFF, APRIL, TWEAK and their receptors in normal kidney and renal cell carcinomas. *Anal Cell Pathol*. 2011;34(1, 2):49-60.
26. Langat DL, Wheaton DA, Platt JS, Sifers T, Hunt JS. Signaling pathways for B cell-activating factor (BAFF) and a proliferation-inducing ligand (APRIL) in human placenta. *Am J Pathol*. 2008;172(5):1303-1311.
27. Pelekanou V, Kampa M, Kafousi M, et al. Expression of TNF-superfamily members BAFF and APRIL in breast cancer: immunohistochemical study in 52 invasive ductal breast carcinomas. *BMC Cancer*. 2008;8(1):1-9.
28. Notas G, Alexaki VI, Kampa M, et al. APRIL binding to BCMA activates a JNK2-FOXO3-GADD45 pathway and induces a G2/M cell growth arrest in liver cells. *J Immunol*. 2012;189(10):4748-4758.
29. Friedman SL. Hepatic stellate cells: protean, multifunctional, and enigmatic cells of the liver. *Physiol Rev*. 2008;88(1):125-172.
30. Van Zijl F, Mair M, Csiszar A, et al. Hepatic tumor-stroma crosstalk guides epithelial to mesenchymal transition at the tumor edge. *Oncogene*. 2009;28(45):4022-4033.
31. Kang N, Gores GJ, Shah VH. Hepatic stellate cells: partners in crime for liver metastases? *Hepatology*. 2011;54(2):707-713.
32. Zhang R, Gao X, Zuo J, et al. STMN1 upregulation mediates hepatocellular carcinoma and hepatic stellate cell crosstalk to aggravate cancer by triggering the MET pathway. *Cancer Sci*. 2020;111(2):406.
33. Wagner EF. Fibroblasts for all seasons. *Nature*. 2016;530(7588):42-43.
34. Kalluri R. The biology and function of fibroblasts in cancer. *Nat Rev Cancer*. 2016;16(9):582.
35. Liu H, Shen J, Lu K. IL-6 and PD-L1 blockade combination inhibits hepatocellular carcinoma cancer development in mouse model. *Biochem Biophys Res Commun*. 2017;486(2):239-244.
36. Zheng N, Wang D, Ming H, Zhang H, Yu X. BAFF promotes proliferation of human mesangial cells through interaction with BAFF-R. *BMC Nephrol*. 2015;16(1):1-10.
37. Mackay F, Schneider P. TACI, an enigmatic BAFF/APRIL receptor, with new unappreciated biochemical and biological properties. *Cytokine Growth Factor Rev*. 2008;19(3-4):263-276.
38. Wu W, Li S, Zhang W, Sun J, Ren G, Dong Q. A novel VHH antibody targeting the B cell-activating factor for B-cell lymphoma. *Int J Mol Sci*. 2014;15(6):9481-9496.
39. Rihacek M, Bienertova-Vasku J, Valik D, Sterba J, Pilatova K, Zdrzilova-Dubská L. B-cell activating factor as a cancer biomarker and its implications in cancer-related cachexia. *Biomed Res Int*. 2015;2015:1-9.
40. Parameswaran R, Lim M, Fei F, et al. Effector-mediated eradication of precursor B acute lymphoblastic leukemia with a novel Fc-engineered monoclonal antibody targeting the BAFF-R. *Mol Cancer Ther*. 2014;13(6):1567-1577.

**How to cite this article:** Gao L, Morine Y, Yamada S, et al. The BAFF/NF $\kappa$ B axis is crucial to interactions between sorafenib-resistant HCC cells and cancer-associated fibroblasts. *Cancer Sci*. 2021;00:1-10. <https://doi.org/10.1111/cas.15041>