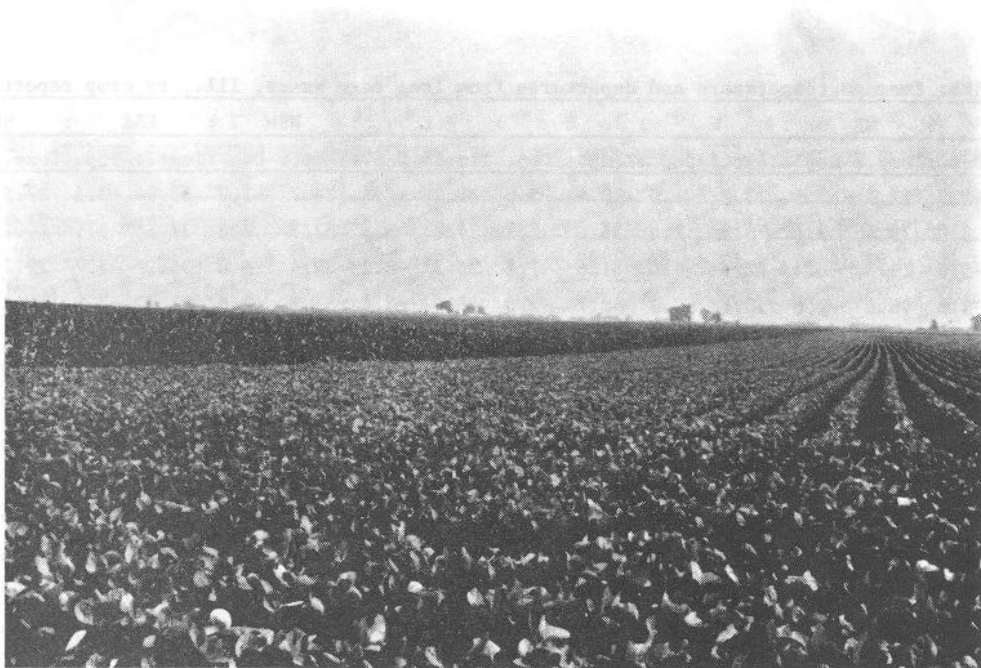


CROPS

Production of crops in Illinois in 1984 rebounded to more normal levels after 1983's total production was reduced due to drought and the Payment-In-Kind program. Corn production climbed almost 100% above 1983, to 1.2 billion bushels. The corn harvested acreage rose approximately 3 million acres from 1983 to 10.9 million acres, with an average yield of 114 bushels per acre. Soybean production in 1984 totaled approximately 289 million bushels, up 8% from 1983. Harvested acreage declined slightly from 1983 to 9.0 million acres, with a Statewide average yield of 32 bushels per acre, compared to 1983's 29.5.

Illinois farmers marketed 4,556 million dollars worth of crops in 1984. Corn marketings made up 2,057 million dollars, or 30.5%, while soybeans accounted for 2,034 million dollars, or 30.2% of the total cash receipts from farm marketings. In 1984, receipts from crops represented 67.6% of the total cash receipts received by Illinois farmers from all farm marketings. Illinois ranked second in the Nation in cash receipts from crops in 1984, behind California.

Illinois continues to be a major food supplier to much of the world. In 1984, Illinois was the leading State in the U.S. in exports of corn, soybeans, and their products. Exports of feed grains and their products (primarily corn) totaled 1,751 million dollars in fiscal year 1984, while soybeans and soybean products amounted to 1,232 million dollars. These two categories accounted for 91% of the total value of all crop and livestock exports from Illinois in 1984.



FIELD CROPS

Illinois in 1984, saw the production of field crops rebound to a more normal level, following the sharp reductions in crop production in 1983 as the result of a severe drought and the Government Acreage Reduction Programs. While the 1984 overall crop production index increased 47% from the previous year, it was still 16% below the record high crop production level of 1982. Field crops showing a larger production in 1984 from 1983 were corn, soybeans, wheat, and sorghum, while the production of oats and rye were lower.

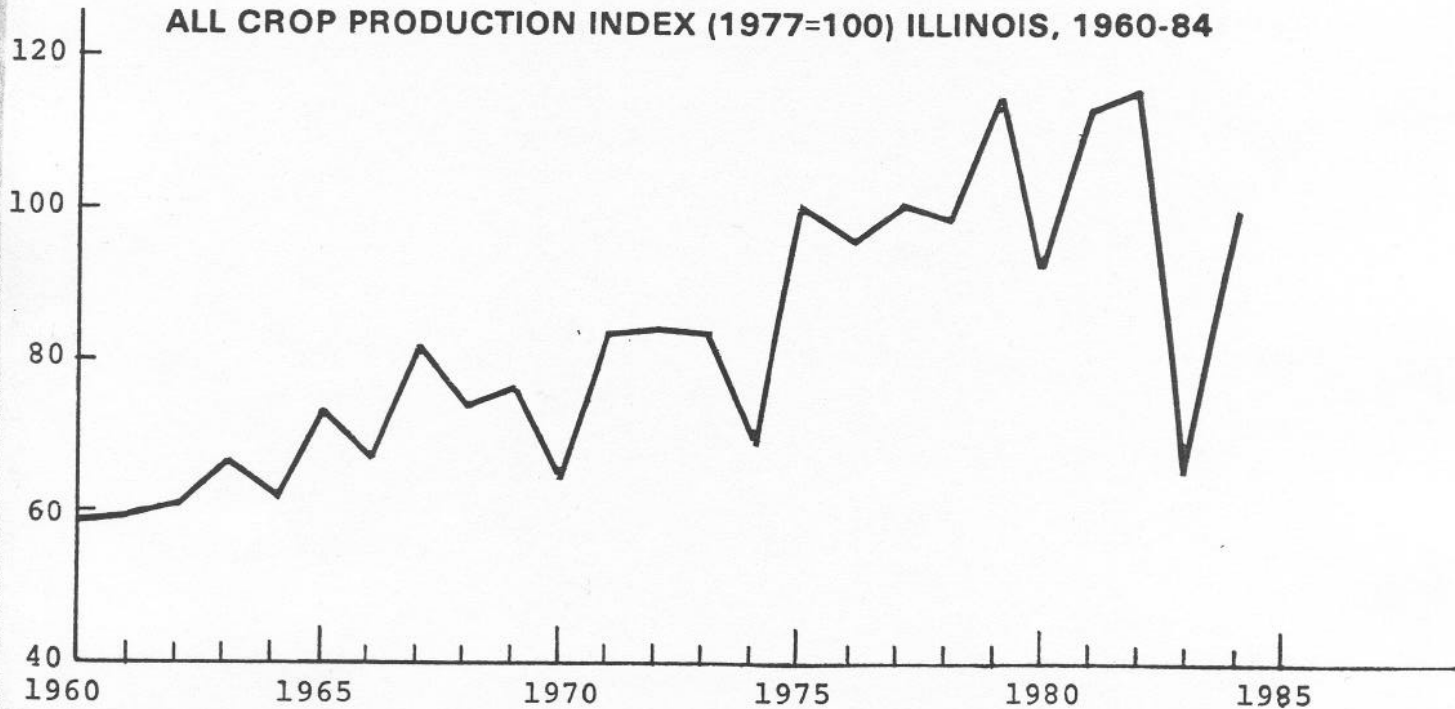
Farmers in Illinois harvested 23,496,000 acres of crops in 1984, up 17% from the 20,090,000 acres harvested in 1983, but 1% less than the 23,848,000 acres harvested in 1982. The low acreage level in 1983 was primarily due to the heavy participation in the Government Acreage Reserve and PIK programs.

The table below shows the "All Crop Production Index" with the base period, 1977=100.

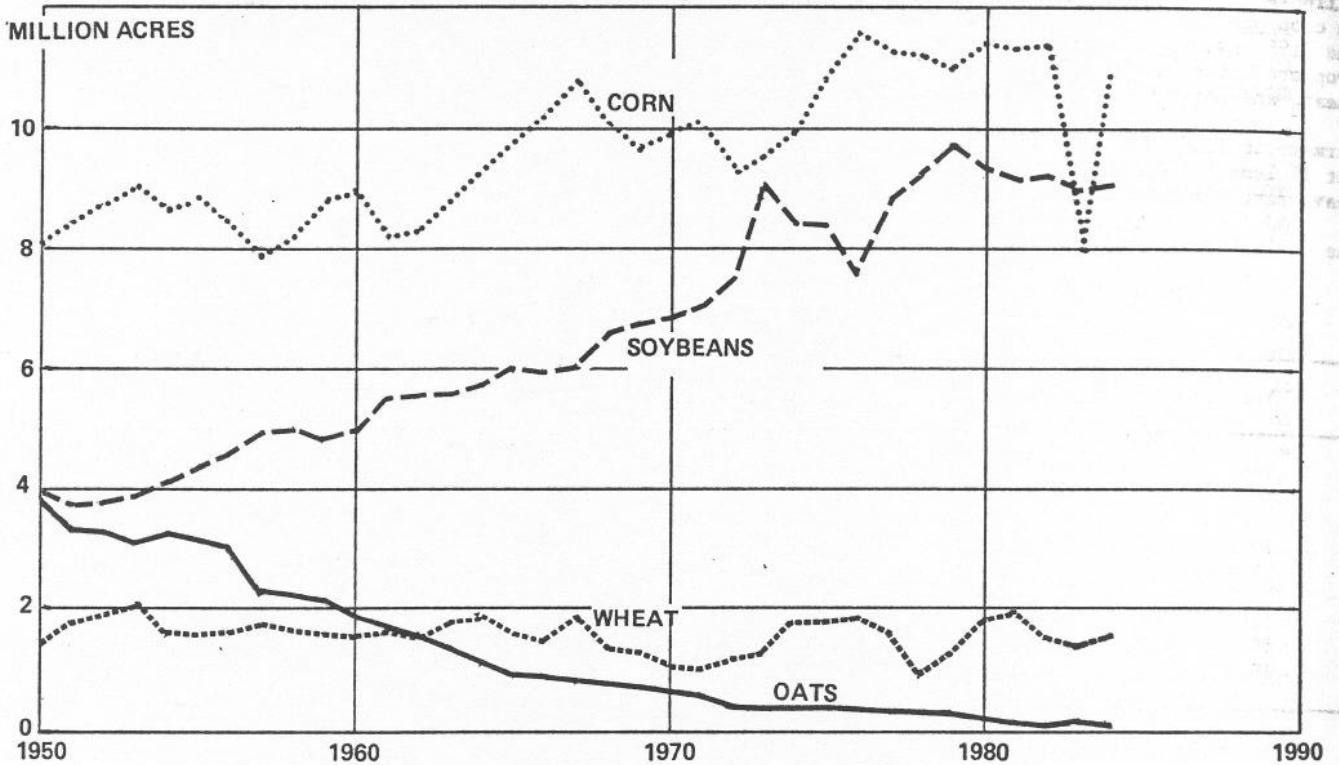
CROP PRODUCTION INDEX, 1960 - 84

Year	1977=100	Year	1977=100	Year	1977=100
1960	58	1969	77	1977	100
1961	59	1970	64	1978	98
1962	61	1971	83	1979	114
1963	66	1972	84	1980	92
1964	62	1973	83	1981	113
1965	73	1974	68	1982	115
1966	67	1975	100	1983	66
1967	82	1976	95	1984	97
1968	74				

ALL CROP PRODUCTION INDEX (1977=100) ILLINOIS, 1960-84



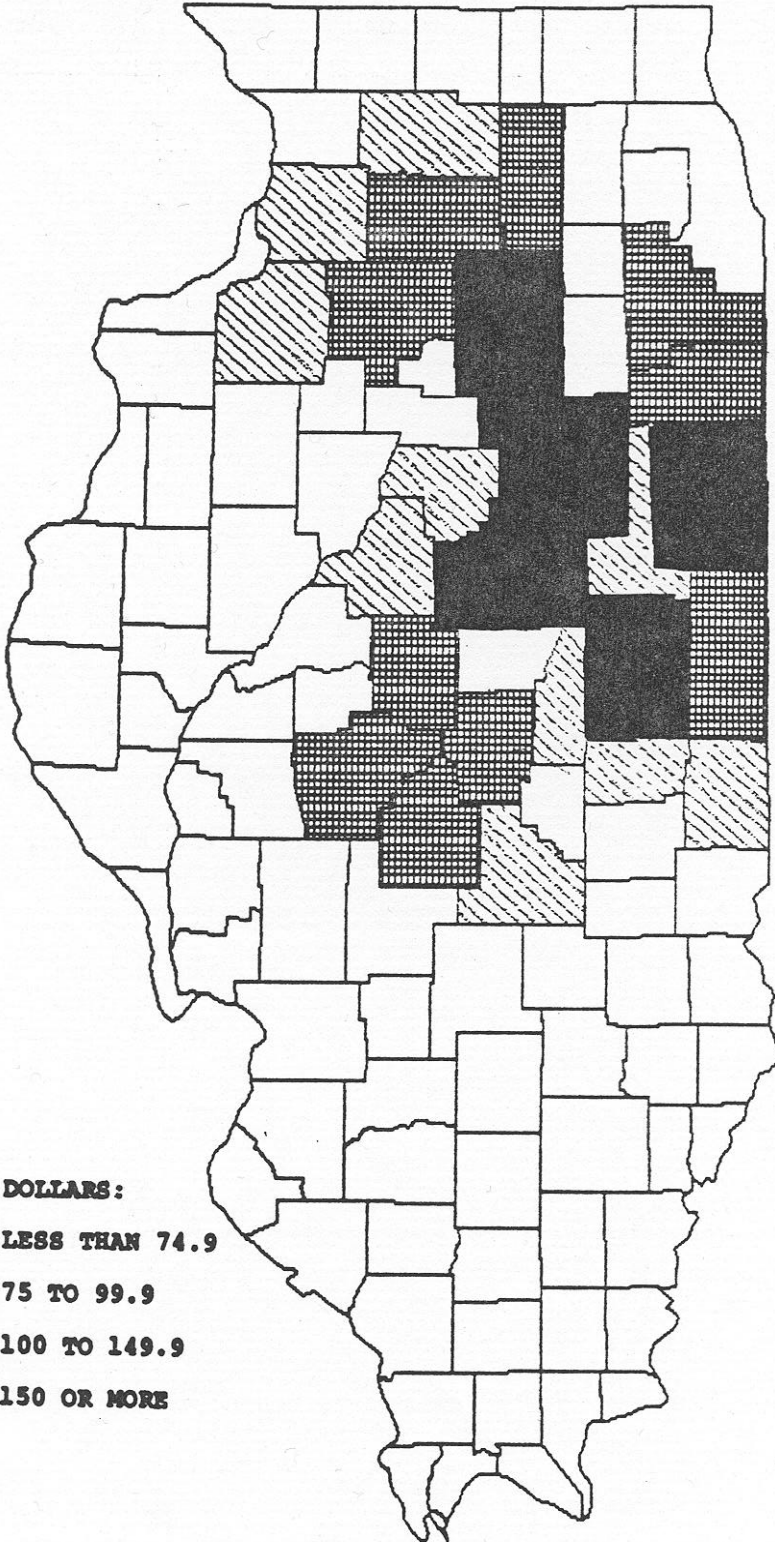
PRINCIPAL CROPS, ACRES HARVESTED FOR GRAIN, ILLINOIS, 1950-84







CROPS: Record highs through 1984

Crops	Unit	Date series: began	Acres harvested		Yield per acre		Production	
			Year	Acres	Year	Yield	Year	Production
			Thousands				Thousands	
Corn for Grain.	.Bushels	1924	1976	11,590	1982	131	1982	1,498,640
Soybeans.Bushels	1919	1979	9,620	1979	39	1979	375,180
WheatBushels	1866	1881	3,750	1981	50	1981	97,500
Oats.Bushels	1866	1925	4,855	{1968 1981	66	1917	207,000
Sorghum for grainBushels	1931	1984	285	1982	78	1984	19,665
All HayTons	1912	1940	3,523	{1979 1982 1984	3.2	1956	5,065

CROP CASH RECEIPTS - 1983



MILLION DOLLARS:

-  LESS THAN 74.9
-  75 TO 99.9
-  100 TO 149.9
-  150 OR MORE

CASH RECEIPTS FROM CROPS: TOTAL AND SELECTED COMMODITIES, ILLINOIS BY COUNTIES, CALENDAR YEAR 1982 REVISED

DISTRICT AND COUNTY	ALL CROPS	CORN	SOYBEANS	WHEAT	OATS	ALL OTHER CROPS
	1,000 DOLLARS					
BUREAU	136,238	89,078	31,863	767	249	14,282
CARROLL	27,367	23,572	2,385	112	277	1,020
HENRY	82,663	58,438	21,996	238	766	1,224
JO DAVIESS	11,417	8,685	1,459	127	126	1,020
LEE	101,893	69,692	28,805	629	318	2,448
MERCER	54,101	40,668	12,251	201	165	816
OGLE	79,251	56,981	16,903	917	369	4,081
PUTNAM	17,563	9,800	5,833	259	39	1,632
ROCK ISLAND	28,696	21,475	5,590	132	70	1,428
STEPHENSON	34,264	27,060	5,083	404	289	1,428
WHITESIDE	75,703	57,280	16,580	312	308	1,224
WINNEBAGO	35,991	23,837	7,690	758	238	3,469
NORTHWEST	685,147	486,565	156,438	4,856	3,215	34,073
BOONE	31,067	18,692	10,097	561	85	1,632
COOK	28,219	4,790	3,985	239	26	19,179
DE KALB	99,357	66,395	28,128	773	185	3,877
DU PAGE	21,936	4,889	3,266	291	24	13,466
GRUNDY	58,678	38,046	20,231	141	56	204
KANE	58,402	29,013	16,294	670	183	12,242
KENDALL	44,159	27,583	15,216	280	60	1,020
LAKE	26,119	5,730	5,562	1,085	72	13,670
LA SALLE	159,315	96,150	59,219	413	267	3,265
MC HENRY	50,286	30,635	10,095	861	125	8,569
WILL	88,119	46,234	29,683	1,136	252	10,814
NORTHEAST	665,656	368,158	201,777	6,449	1,334	87,938
ADAMS	53,816	19,758	26,777	5,804	48	1,428
BROWN	14,164	6,114	6,687	1,148	11	204
FULTON	55,567	30,601	21,967	2,109	75	816
HANCOCK	66,446	30,333	32,863	2,569	69	612
HENDERSON	38,157	29,015	8,361	234	139	408
KNOX	64,577	41,980	21,309	468	208	612
MC DONOUGH	67,198	39,449	26,386	826	130	408
SCHUYLER	24,989	10,161	11,819	2,788	17	204
WARREN	63,087	45,525	16,668	131	355	408
WEST	448,002	252,936	172,837	16,077	1,052	5,101
DE WITT	55,193	32,224	22,375	360	30	204
LOGAN	93,246	55,511	36,457	783	87	408
MC LEAN	191,678	121,361	68,280	656	156	1,224
MACON	96,023	59,467	35,030	885	29	612
MARSHALL	43,892	28,078	15,000	317	89	408
MASON	65,504	34,237	26,049	3,736	54	1,428
MENARD	42,074	22,702	17,949	1,197	23	204
PEORIA	57,997	37,403	16,191	1,068	70	3,265
STARK	41,808	29,219	11,501	402	74	612
TAZEWELL	83,021	54,628	25,242	1,413	106	1,632
WOODFORD	73,420	46,480	24,944	501	67	1,428
CENTRAL	843,858	521,310	299,017	11,319	785	11,426
CHAMPAIGN	167,609	103,228	61,615	1,616	130	1,020
FORD	79,378	48,073	30,094	319	77	816
IROQUOIS	174,414	103,912	64,036	1,246	119	5,101
KANKAKEE	109,030	65,005	33,842	1,073	132	8,977
LIVINGSTON	167,000	97,492	68,128	365	199	816
PIATT	79,413	50,254	28,277	652	26	204
VERMILION	125,227	74,748	46,447	1,530	53	2,448
EAST	902,071	542,713	332,440	6,800	735	19,383

CASH RECEIPTS FROM CROPS: TOTAL AND SELECTED COMMODITIES, ILLINOIS BY COUNTIES, CALENDAR YEAR 1982 REVISED

DISTRICT AND COUNTY	ALL CROPS	CORN	SOYBEANS	WHEAT	OATS	ALL OTHER CROPS
	1,000 DOLLARS					
BOND	25,734	4,034	15,156	5,922	10	612
CALHOUN	8,036	3,018	3,060	1,545	5	408
CASS	39,807	19,979	16,606	1,360	25	1,836
CHRISTIAN	111,192	63,389	42,185	2,702	60	2,856
GREENE	39,253	15,368	19,115	4,350	11	408
JERSEY	26,772	8,518	12,711	4,720	7	816
MACOUPIN	78,485	30,132	39,514	7,790	29	1,020
MADISON	61,114	15,991	28,901	10,286	19	5,917
MONTGOMERY	75,661	33,145	34,671	7,001	28	816
MORGAN	67,614	37,568	27,382	2,221	35	408
PIKE	46,690	15,323	23,108	4,540	47	3,673
SANGAMON	125,317	69,888	49,324	1,733	87	4,285
SCOTT	21,770	11,293	8,745	1,511	18	204
WEST SOUTHWEST	727,444	327,645	320,478	55,682	380	23,260
CLARK	41,371	14,891	23,722	2,336	15	408
CLAY	30,526	7,172	18,850	3,678	10	816
COLES	65,838	37,324	26,947	1,090	69	408
CRAWFORD	33,965	12,836	17,464	3,450	10	204
CUMBERLAND	30,084	10,965	17,235	1,456	20	408
DOUGLAS	70,143	42,406	27,015	383	135	204
EDGAR	84,173	49,194	32,673	1,579	115	612
EFFINGHAM	39,625	15,322	18,789	4,880	22	612
FAYETTE	43,499	11,113	24,140	7,610	24	612
JASPER	42,901	14,873	24,215	3,492	16	306
LAWRENCE	30,488	17,228	9,894	3,253	12	102
MARION	37,785	9,621	21,644	5,891	17	612
MOULTRIE	53,531	31,839	20,510	755	121	306
RICHLAND	29,186	11,926	14,990	2,152	17	102
SHELBY	89,883	45,405	38,345	5,676	49	408
EAST SOUTHEAST	722,998	332,116	336,431	47,679	651	6,121
ALEXANDER	11,217	1,806	7,979	1,329	1	102
CLINTON	32,764	7,545	18,127	6,247	29	816
JACKSON	23,747	4,520	12,797	3,971	11	2,448
JOHNSON	4,228	1,400	1,724	684	12	408
MONROE	27,835	9,047	11,400	6,557	15	816
PERRY	18,437	4,425	10,503	3,293	13	204
PULASKI	8,293	1,413	5,235	1,438	4	204
RANDOLPH	27,108	6,666	12,767	6,429	22	1,224
ST. CLAIR	52,754	15,394	24,557	8,905	22	3,877
UNION	12,115	2,032	4,950	1,862	7	3,265
WASHINGTON	43,108	9,599	25,680	7,201	15	612
WILLIAMSON	6,336	2,064	3,292	663	10	306
SOUTHWEST	267,941	65,910	139,010	48,578	160	14,282
EDWARDS	18,776	8,106	8,168	2,396	5	102
FRANKLIN	18,676	3,785	11,272	3,410	5	204
GALLATIN	29,172	15,269	10,420	3,377	4	102
HAMILTON	27,566	8,640	13,964	4,855	5	102
HARDIN	1,020	560	264	93	1	102
JEFFERSON	23,028	5,766	13,366	3,377	10	510
MASSAC	7,372	2,451	3,755	1,058	6	102
POPE	3,873	1,434	1,723	507	5	204
SALINE	17,718	7,786	7,110	2,309	2	510
WABASH	22,923	12,975	7,484	2,257	4	204
WAYNE	45,655	14,136	24,631	6,777	8	102
WHITE	44,678	20,968	16,461	7,036	9	204
SOUTHEAST	260,456	101,877	118,619	37,450	62	2,448
ILLINOIS	5,523,574	2,999,230	2,077,047	234,891	8,374	204,032

CASH RECEIPTS FROM CROPS: TOTAL AND SELECTED COMMODITIES, ILLINOIS BY COUNTIES, CALENDAR YEAR 1983 REVISED

DISTRICT AND COUNTY	ALL CROPS	CORN	SOYBEANS	WHEAT	OATS	ALL OTHER CROPS
1,000 DOLLARS						
BUREAU	114,271	69,174	30,874	615	295	13,312
CARROLL	24,475	20,908	2,332	199	286	750
HENRY	63,007	41,189	19,901	214	579	1,125
JO DAVIESS	8,406	5,978	1,252	126	113	937
LEE	95,472	63,716	28,975	461	258	2,062
MERCER	45,496	32,434	11,952	138	221	750
OGLE	58,368	38,662	14,716	775	278	3,937
PUTNAM	14,251	7,294	5,471	136	38	1,312
ROCK ISLAND	22,506	15,622	5,395	111	66	1,312
STEPHENSON	23,320	16,472	5,090	334	300	1,125
WHITESIDE	73,516	56,005	15,892	238	256	1,125
WINNEBAGO	26,618	15,181	7,536	534	179	3,187
NORTHWEST	569,706	382,636	149,384	3,880	2,869	30,937
BOONE	26,178	15,791	8,411	399	78	1,500
COOK	24,010	2,815	3,338	212	21	17,625
DE KALB	83,244	51,867	27,213	618	171	3,375
DU PAGE	19,459	4,531	2,378	146	30	12,375
GRUNDY	41,597	21,699	19,517	138	55	187
KANE	57,019	28,802	16,292	479	196	11,250
KENDALL	40,805	24,612	15,000	198	56	937
LAKE	23,967	6,487	4,239	631	49	12,562
LA SALLE	152,312	85,821	62,883	357	252	3,000
MC HENRY	45,393	27,816	9,126	656	107	7,687
WILL	84,601	45,758	27,531	935	253	10,125
NORTHEAST	598,585	316,000	195,926	4,768	1,268	80,623
ADAMS	38,410	10,948	21,555	4,559	34	1,312
BROWN	8,199	1,813	5,161	1,026	11	187
FULTON	47,108	25,024	19,531	1,729	74	750
HANCOCK	49,284	16,399	30,193	2,035	95	562
HENDERSON	39,142	28,267	10,089	232	179	375
KNOX	56,292	31,043	24,151	399	137	562
MC DONOUGH	64,899	36,270	27,492	609	154	375
SCHUYLER	17,600	6,064	9,299	2,024	26	187
WARREN	62,561	44,489	17,214	130	352	375
WEST	383,494	200,317	164,686	12,743	1,062	4,687
DE WITT	52,892	28,430	24,024	214	36	187
LOGAN	93,723	53,684	38,973	596	95	375
MC LEAN	180,105	100,510	77,705	578	188	1,125
MACON	82,265	48,875	31,994	792	41	562
MARSHALL	39,973	23,143	16,196	172	88	375
MASON	49,761	26,102	19,582	2,668	96	1,312
MENARD	40,457	22,593	16,819	836	21	187
PEORIA	47,501	27,297	16,288	1,023	81	2,812
STARK	29,555	17,005	11,406	512	70	562
TAZEWELL	77,408	49,631	25,009	1,118	151	1,500
WOODFORD	67,224	39,969	25,363	499	80	1,312
CENTRAL	760,866	437,240	303,359	9,009	946	10,312
CHAMPAIGN	169,832	97,747	69,531	1,300	128	1,125
FORD	64,861	34,015	29,714	324	58	750
IROQUOIS	162,873	86,461	70,475	1,093	157	4,687
KANKAKEE	102,253	56,853	36,171	839	140	8,250
LIVINGSTON	131,048	64,295	65,267	277	272	937
PIATT	75,923	45,872	29,395	401	69	187
VERMILION	121,605	64,774	53,079	1,424	79	2,250
EAST	828,395	450,018	353,631	5,657	902	18,187

CASH RECEIPTS FROM CROPS: TOTAL AND SELECTED COMMODITIES, ILLINOIS BY COUNTIES, CALENDAR YEAR 1983 REVISED

DISTRICT AND COUNTY	ALL CROPS	CORN	SOYBEANS	WHEAT	OATS	ALL OTHER CROPS
1,000 DOLLARS						
BOND	15,590	1,284	8,792	4,943	9	562
CALHOUN	6,323	1,705	3,299	940	4	375
CASS	37,159	18,693	16,099	849	18	1,500
CHRISTIAN	103,742	53,816	45,237	2,022	42	2,625
GREENE	29,576	9,806	16,627	2,760	9	375
JERSEY	19,802	4,859	10,515	3,669	8	750
MACOUPIN	53,438	17,882	29,188	5,412	19	937
MADISON	47,547	9,670	24,182	8,427	19	5,250
MONTGOMERY	57,082	22,204	29,740	4,363	25	750
MORGAN	63,854	35,118	26,631	1,695	35	375
PIKE	42,297	12,069	22,293	4,512	49	3,375
SANGAMON	124,596	66,640	52,701	1,223	95	3,937
SCOTT	16,912	8,056	7,678	976	14	187
WEST SOUTHWEST	617,918	261,801	292,982	41,791	345	20,999
CLARK	34,812	9,694	22,327	2,401	15	375
CLAY	16,459	1,839	10,083	3,781	6	750
COLES	60,884	32,250	27,407	763	89	375
CRAWFORD	27,607	8,284	15,703	3,426	6	187
CUMBERLAND	29,237	12,096	15,129	1,616	21	375
DOUGLAS	74,420	42,438	31,423	244	126	187
EDGAR	96,803	50,992	43,877	1,263	108	562
EFFINGHAM	20,661	5,416	11,071	3,581	30	562
FAYETTE	26,175	4,376	15,222	5,997	17	562
JASPER	26,751	5,604	17,990	2,864	13	281
LAWRENCE	24,283	13,031	8,674	2,379	11	187
MARION	21,746	3,898	11,788	5,481	16	562
MOULTRIE	63,749	38,417	24,293	540	124	375
RICHLAND	15,884	3,522	10,522	1,737	10	94
SHELBY	89,362	47,299	37,591	4,046	50	375
EAST SOUTHEAST	628,833	279,157	303,101	40,120	644	5,812
ALEXANDER	10,944	1,278	8,913	657	1	94
CLINTON	23,798	3,837	13,786	5,402	23	750
JACKSON	21,906	4,633	12,040	2,977	7	2,250
JOHNSON	3,391	895	1,646	467	9	375
MONROE	26,267	6,457	14,207	4,652	14	937
PERRY	17,752	3,985	10,595	2,977	7	187
PULASKI	7,966	730	5,842	1,204	2	187
RANDOLPH	23,161	5,178	11,912	4,931	15	1,125
ST. CLAIR	54,556	17,234	26,192	7,362	19	3,750
UNION	10,150	2,039	3,940	1,163	7	3,000
WASHINGTON	33,096	6,079	18,622	7,820	12	562
WILLIAMSON	5,123	1,469	2,907	457	9	281
SOUTHWEST	238,110	53,816	130,601	40,067	126	13,500
EDWARDS	13,670	4,005	7,635	1,934	3	94
FRANKLIN	11,574	2,239	6,430	2,712	5	187
GALLATIN	32,824	18,361	12,538	1,829	2	94
HAMILTON	16,322	3,600	9,768	2,855	4	94
HARDIN	909	341	408	65	1	94
JEFFERSON	18,511	4,138	10,736	3,069	6	562
MASSAC	5,271	1,403	3,206	562	7	94
POPE	3,124	762	1,897	274	4	187
SALINE	21,743	12,210	7,663	1,397	4	469
WABASH	25,327	12,707	10,423	2,004	4	187
WAYNE	33,859	7,157	21,272	5,236	6	187
WHITE	37,926	17,660	15,781	4,293	4	187
SOUTHEAST	221,059	84,584	107,756	26,231	51	2,437
ILLINOIS	4,846,968	2,465,568	2,001,426	184,267	8,212	187,495

CROP DEVELOPMENT 1984

The year of 1984 saw improved crop growing conditions over 1983. Although average annual temperatures were near normal across the State, cooler temperatures during the growing season offset below normal precipitation and led to much improved yields.

The first months of 1984 were ones of contrast with January and March temperatures below normal while February was much above normal. Precipitation was below normal in January and then above normal in February and March. The cool and wet weather that started in March continued through May, delaying planting of crops across most of the State. Temperatures warmed in June and were above normal while precipitation was below normal for the month. Below normal precipitation continued through July and August but with below normal temperatures. The cooler than normal temperatures continued into September, but precipitation was above normal in Southern Illinois and below normal over the rest of the State. October and November were warmer than normal but also saw above normal precipitation across the State, delaying harvesting of crops and winter wheat seeding. December continued the trend of warmer than normal temperatures and frequent rains. Because of this, completion of harvest in some areas of Southern Illinois was delayed until the ground was frozen in early 1985.

Planting of the 1984 winter wheat crop began in mid-September 1983, about the usual starting time, and made good progress through the fall. Virtually all of the 1,800,000 acres planted was seeded by mid-November. Mild temperatures and adequate supplies of soil moisture in October aided emergence of the crop. However, heavy rains in November caused some flooding of low-lying fields. An adequate snow cover protected the crop from the extremely cold temperatures that occurred in late December and January. Cool and wet conditions in the spring slowed growth of the crop; however, warmer and drier conditions in June aided crop maturation and allowed harvest to begin by the end of the month. The dry conditions in July allowed harvesting of the crop to make rapid progress and be virtually complete by the middle of the month. Acres harvested totaled 1,600,000 or about 89% of the planted acreage. Yield, at 44 bushels per acre, was 2 bushels lower than 1983's yield and 1 bushel below 1982's yield. Production totaled 70,400,000 bushels.

Planting of the corn crop was slowed by the wet, cool spring. Planting progress lagged behind the average from the time planting started in late April to completion in mid-June. Acreage planted totaled 11,200,000 acres, up sharply from 1983 when the PIK program reduced acreage. The crop made good progress through June and July, although development ran slightly behind the 5-year averages. Lack of rainfall began to be a problem for many areas of the State by the end of July, particularly in the South. Inadequate, spotty rainfall continued throughout August, causing the Statewide crop condition to decline. Corn harvest began on schedule in mid-September and made good progress into early October. However, wet weather during October saturated fields and severely hampered harvest progress. Harvest was nearly complete for the northern two-thirds of the State by mid-November, but progress in the southern counties was delayed by wet fields. Many areas of the South had to wait for a hard freeze before completing harvest. Farmers harvested 10,940,000 acres of corn for grain, with an average yield of 114 bushels. Total production for the State was 1,247,160,000 bushels.

Soybean planting was also delayed by wet field conditions during the spring. Planting started in mid-May and ran behind the average until completion in late June. Farmers planted 9,200,000 acres of soybeans, up 1% or 100,000 acres from 1983. The crop made good progress through July and August although dry weather put it under stress in many areas, particularly in the South, by late July. Spotty rainfall in August resulted in extremely variable crop conditions with the late planted double crop soybeans most affected. Harvest began in mid-September and made good progress until early October when rain slowed it. Wet fields and high grain moisture continued to delay harvest through October and November. Harvest wasn't complete until late November in northern areas of the State while some areas in the South had to wait on a hard freeze before completing harvest. Acres harvested totaled 9,020,000 with a larger than usual abandonment due to adverse harvest conditions. The average yield was 32 bushels per acre and total production was 288,640,000 bushels.

As with corn and soybeans, oat seeding was slowed by the poor conditions during April and was not complete until mid-May. This was about a week behind the average. Farmers seeded 375,000 acres, down 82% from 1983 when oats were seeded as a cover crop on conservation use acres as a result of farmer sign-up in the PIK program. Because of the late planting, crop development ran behind normal through the growing season although the crop had adequate supplies of moisture. Harvest began in mid-July and, aided by favorable weather conditions, was complete by mid-August. Farmers harvested 165,000 acres for grain with a statewide yield of 65 bushels per acre. Production totaled 10,725,000 bushels, the lowest since records began in 1866.

Planting of winter wheat for the 1985 crop began on schedule in mid-September but was delayed by rain beginning in mid-October. Wet fields continued to hamper seeding through November and much of the acreage was seeded late and under muddy conditions. Mild temperatures aided emergence of the crop but excess moisture caused ponding in low-lying fields. Farmers only seeded 850,000 acres in the fall of 1984, the smallest since records began in 1866.

Plowing of the 1985 intended corn and soybean acreage was also hampered by the wet conditions with only 53% tilled by mid-December. This was well behind the average.

ILLINOIS' POSITION IN NATION'S CROP PRODUCTION

Crops	Date	U.S. total	Illinois total	Percent of	Illinois' rank
				U.S. total	among States
			- 1,000 bushels -	Percent	
Soybeans	1984	1,860,783	288,640	15.5	1
Corn	1984	7,649,995	1,247,160	16.3	2
Oats	1984	471,921	10,725	2.3	10
Wheat	1984	2,595,479	70,400	2.7	13

AGGREGATE ACREAGE OF CROPS HARVESTED AND VALUE OF PRODUCTION, Illinois, 1975-84

Year	Field crops		Vegetables		Fruit	All crops	
	Harvested	Value of	Harvested	Value of	Value of	Harvested	Value of
	acres	dollars	acres	- 1,000 dollars -	production	acres	dollars
1975	22,958	5,172,936	128	42,249	12,238	23,086	5,227,423
1976	23,030	4,866,310	115	37,359	11,672	23,145	4,915,341
1977	23,441	4,837,218	102	34,651	11,871	23,543	4,883,740
1978	23,151	5,288,607	105	36,496	14,896	23,256	5,339,999
1979	23,827	6,560,492	91	35,529	16,415	23,918	6,612,436
1980	23,988	6,262,980	71	28,101	16,616	24,059	6,331,756
1981	24,116	6,390,832	67	33,017	17,957	24,183	6,465,989
1982	23,848	6,582,641	63	28,219	11,682	23,911	6,622,542
1983	20,090	4,690,320	59	24,542	15,429	20,149	4,730,291
1984	23,496	5,768,629	61	30,895	17,927	23,557	5,817,451

1/ Harvested acreage of field crops and vegetables.

CROP ACREAGE, YIELD, PRODUCTION AND VALUE

CORN: Acreage, yield, production, and value, Illinois, 1975-84

Year	Corn for grain					
	Harvested	Yield	Production	Season average price	Value of production	
	acres	per acre		per bushel	Total	Per acre
	1,000 acres	Bushels	1,000 bushels	Dollars	1,000 dollars	Dollars
1975	10,810	116.0	1,253,960	2.56	3,210,138	296.96
1976	11,590	107.0	1,240,130	2.14	2,653,878	228.98
1977	11,280	105.0	1,184,400	2.09	2,475,396	219.45
1978	11,170	111.0	1,239,870	2.30	2,851,701	255.30
1979	11,050	127.0	1,403,350	2.57	3,606,610	326.39
1980	11,440	93.0	1,063,920	3.14	3,340,709	292.02
1981	11,320	126.0	1,426,320	2.53	3,608,590	318.78
1982	11,440	131.0	1,498,640	2.66	3,986,382	348.46
1983	7,900	79.0	624,100	3.26	2,034,566	257.54
1984	10,940	114.0	1,247,160	2.70	3,367,332	307.80

Year	Harvested for silage		Production	Hogged down : grazed and forage	All corn	
	Acreage	Yield			Planted	Harvested
	1,000 acres	Tons			1,000 tons	---1,000 acres---
1975	255	16.5	4,208	15	11,100	11,080
1976	285	13.5	3,848	15	11,900	11,890
1977	225	14.5	3,263	25	11,550	11,530
1978	250	15.5	3,875	20	11,450	11,440
1979	230	16.0	3,680	10	11,300	11,290
1980	230	14.0	3,220	10	11,700	11,680
1981	220	16.0	3,520	10	11,600	11,550
1982	220	16.5	3,630	10	11,700	11,670
1983	250	11.5	2,875	10	8,200	8,160
1984	220	14.0	3,080	10	11,200	11,170

SOYBEANS AND SMALL GRAINS: Acreage, yield, production and value, Illinois, 1975-84

Year	Acreage		Yield per acre	Production 1,000 bushels	Season average price per bushel	Value of production	
	Planted	Harvested				Total	Per acre
	- 1,000 acres -		Bushels		Dollars	1,000 dollars	Dollars
<u>SOYBEANS</u>							
1975	8,350	8,320	36.0	299,520	5.11	1,530,547	183.96
1976	7,600	7,560	33.0	249,480	7.05	1,758,834	232.65
1977	8,900	8,850	38.0	336,300	6.01	2,021,163	228.38
1978	9,300	9,240	33.5	309,540	6.75	2,089,395	226.13
1979	9,700	9,620	39.0	375,180	6.46	2,423,663	251.94
1980	9,400	9,350	33.5	313,225	7.62	2,386,775	255.27
1981	9,250	9,150	38.0	347,700	6.15	2,138,355	233.70
1982	9,250	9,200	38.5	354,200	5.89	2,086,238	226.77
1983	9,100	9,050	29.5	266,975	7.94	2,119,782	234.23
1984	9,200	9,020	32.0	288,640	6.00	1,731,840	192.00
<u>WHEAT</u>							
1975	1,790	1,730	39.0	67,470	3.13	211,181	122.07
1976	1,900	1,850	39.0	72,150	3.02	217,893	117.78
1977	1,650	1,570	43.0	67,510	2.05	138,396	88.15
1978	1,000	880	38.0	33,440	3.03	101,323	115.14
1979	1,310	1,250	43.0	53,750	3.97	213,388	170.71
1980	1,600	1,570	49.0	76,930	3.93	302,335	192.57
1981	2,000	1,950	50.0	97,500	3.41	332,475	170.50
1982	1,600	1,500	45.0	67,500	3.11	209,925	139.95
1983	1,550	1,400	46.0	64,400	3.36	216,384	154.56
1984	1,800	1,600	44.0	70,400	3.25	228,800	143.00
<u>OATS</u>							
1975	525	445	56.0	24,920	1.42	35,386	79.52
1976	435	380	59.0	22,420	1.52	34,078	89.68
1977	385	335	61.0	20,435	1.10	22,479	67.10
1978	420	275	56.0	15,400	1.25	19,250	70.00
1979	345	260	60.0	15,600	1.44	22,464	86.40
1980	280	230	61.0	14,030	1.82	25,535	111.02
1981	255	205	66.0	13,530	1.90	25,707	125.40
1982	330	200	59.0	11,800	1.84	21,712	108.56
1983	2,100	210	60.0	12,600	1.92	24,192	115.20
1984	375	165	65.0	10,725	1.80	19,305	117.00
<u>RYE</u>							
1975	78	17	22.0	374	2.50	935	55.00
1976	65	15	21.0	315	2.60	819	54.60
1977	65	15	22.0	330	2.00	660	44.00
1978	65	16	23.0	368	2.30	846	52.88
1979	70	17	23.0	391	2.60	1,017	59.82
1980	70	16	23.0	368	2.50	920	57.50
1981	60	14	24.0	336	2.70	907	64.79
1982	55	13	23.0	299	2.90	867	66.69
1983	65	12	28.0	336	2.80	941	78.42
1984	85	11	28.0	308	2.50	770	70.00

SORGHUM FOR ALL PURPOSES: Acreage, yield, production and value, Illinois 1975-84

Year	Sorghum for grain						
	Harvested		Yield	Production	Season average price	Value of production	
	acres	per acre				per bushel	Total
	1,000 acres	Bushels	1,000 bushels	Dollars	1,000 dollars	Dollars	
1975	60	68.0	4,080	2.10	8,568	142.80	
1976	67	59.0	3,953	1.92	7,590	113.28	
1977	64	64.0	4,096	1.62	6,636	103.69	
1978	63	68.0	4,284	1.77	7,583	120.35	
1979	70	68.0	4,760	2.07	9,853	140.76	
1980	83	59.0	4,897	2.94	14,397	173.46	
1981	120	63.0	7,560	2.19	16,556	137.97	
1982	111	78.0	8,658	2.14	18,528	166.92	
1983	117	56.0	6,552	3.05	19,984	170.80	
1984	285	69.0	19,665	2.32	45,623	160.08	

Year	Harvested for silage			Harvested for forage	All sorghum	
	Acreage	Yield	Production		Planted	Harvested
	1,000 acres	Tons	1,000 tons		-----1,000 acres-----	
1975	14	12.0	168	5	80	79
1976	10	11.5	115	7	85	84
1977	11	12.5	138	5	80	80
1978	7	11.5	81	5	75	75
1979	10	11.5	115	5	85	85
1980	10	11.5	115	6	100	99
1981	15	11.5	173	9	150	144
1982	16	12.0	192	6	135	133
1983	9	7.5	68	10	145	136
1984	15	7.0	105	8	320	308

POTATOES: Acreage, yield, production and value, Illinois, 1975-84

Year	Acreage		Yield	Production	Season average price	Value of production	
	Planted	Harvested				per cwt.	Total
	1,000 acres	1,000 acres	Cwt.	1,000 cwt.	Dollars	1,000 dollars	Dollars
1975	2.9	2.8	190	532	4.10	2,181	778.93
1976	2.9	2.8	190	532	3.20	1,702	607.86
1977	2.6	2.3	200	460	3.00	1,380	600.00
1978	2.0	1.9	190	361	3.30	1,191	626.84
1979	2.1	2.0	235	470	2.80	1,316	658.00
1980	1.9	1.8	230	414	6.20	2,567	1,426.11
1981	2.2	2.1	250	525	4.85	2,546	1,212.38
1982	2.3	2.2	265	583	4.10	2,390	1,086.36
1983	2.4	2.3	240	552	5.35	2,953	1,283.91
1984	2.5	2.4	265	636	6.35	4,039	1,682.92

HAY CROPS: Acreage, yield, production and value, Illinois, 1975-84 1/

Year	Acreage	Yield	Production	Season	Value of production	
	harvested	per acre		average price	Total	Per acre
	1,000 acres	Tons	1,000 tons	Dollars	1,000 dollars	Dollars
<u>ALL HAY</u>						
1975	1,250	2.84	3,549	45.00	159,705	127.76
1976	1,220	2.83	3,458	51.50	178,087	145.97
1977	1,230	3.01	3,708	53.00	196,524	159.78
1978	1,205	3.02	3,642	53.00	193,026	160.19
1979	1,180	3.19	3,766	54.00	203,364	172.34
1980	1,160	3.07	3,558	55.50	197,469	170.23
1981	1,140	3.07	3,501	50.50	176,801	155.09
1982	1,130	3.20	3,615	65.50	236,783	209.54
1983	1,120	2.45	2,749	90.50	248,785	222.13
1984	1,220	3.18	3,880	73.00	283,240	232.16

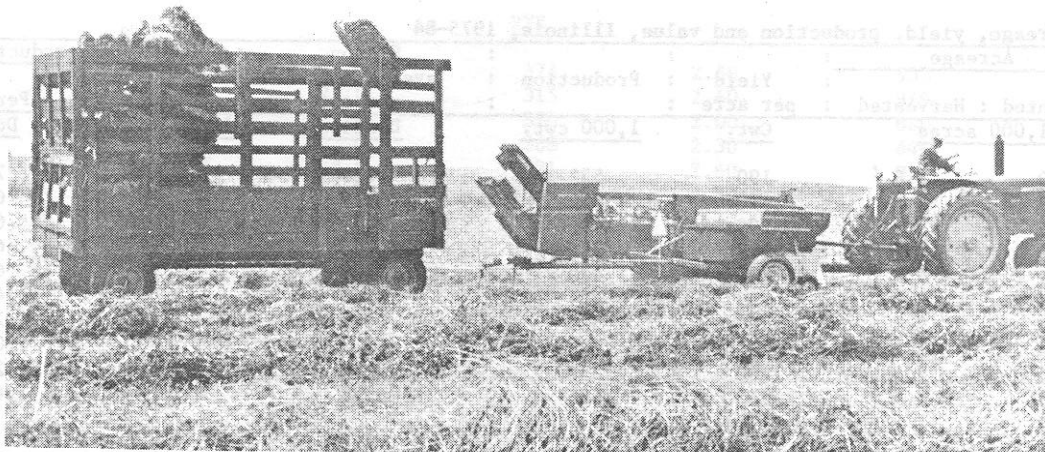
ALFALFA HAY

1975	770	3.30	2,541
1976	760	3.40	2,584
1977	770	3.65	2,811
1978	760	3.65	2,774
1979	740	3.90	2,886
1980	720	3.75	2,700
1981	705	3.70	2,609
1982	690	3.90	2,691
1983	650	3.00	1,950
1984	800	3.80	3,040

OTHER HAY 2/

1975	480	2.10	1,008
1976	460	1.90	874
1977	460	1.95	897
1978	445	1.95	868
1979	440	2.00	880
1980	440	1.95	858
1981	435	2.05	892
1982	440	2.10	924
1983	470	1.70	799
1984	420	2.00	840

1/Season average price published for all hay only. 2/ Includes clover and timothy hay.



CROPS: Counties leading in production of selected crops, 1984

CORN FOR GRAIN		:	SOYBEANS	
County	: Bushels	:	County	: Bushels
MC LEAN	42,120,600	:	MC LEAN	10,671,800
LA SALLE	37,383,800	:	IROQUOIS	9,668,000
CHAMPAIGN	37,141,100	:	CHAMPAIGN	9,426,500
IROQUOIS	36,480,700	:	LA SALLE	9,101,800
BUREAU	35,978,300	:	LIVINGSTON	8,261,000
HENRY	31,743,700	:	SANGAMON	7,383,400
OGLE	28,320,900	:	VERMILLION	7,339,500
DE KALB	28,132,700	:	CHRISTIAN	6,113,300
LEE	27,877,900	:	LOGAN	5,846,500
LIVINGSTON	27,474,400	:	MACOUPIN	5,278,000
WHEAT		:	OATS	
MADISON	2,987,400	:	HENRY	947,200
ST. CLAIR	2,750,700	:	STEPHENSON	896,700
WASHINGTON	2,461,100	:	JO DAVIESS	679,600
ADAMS	2,440,100	:	OGLE	508,000
FAYETTE	2,180,600	:	CARROLL	442,700
MONTGOMERY	2,151,400	:	WHITESIDE	409,900
MACOUPIN	2,146,400	:	BUREAU	392,700
MONROE	2,116,000	:	LEE	367,200
RANDOLPH	1,848,800	:	WINNEBAGO	344,200
CLINTON	1,840,800	:	MERCER	338,900
SORGHUM		:	ALL HAY 1/	
FRANKLIN	1,807,000	:	JO DAVIESS	246,800
JACKSON	1,371,400	:	STEPHENSON	243,400
HAMILTON	1,304,900	:	OGLE	120,200
MASSAC	1,209,500	:	ADAMS	101,300
WILLIAMSON	1,169,000	:	CARROLL	97,100
PULASKI	1,107,100	:	MC HENRY	94,500
WAYNE	1,014,600	:	HENRY	93,500
WHITE	989,100	:	PIKE	88,400
JEFFERSON	980,200	:	WINNEBAGO	77,700
SALINE	832,400	:	KNOX	77,500

1/ Tons.