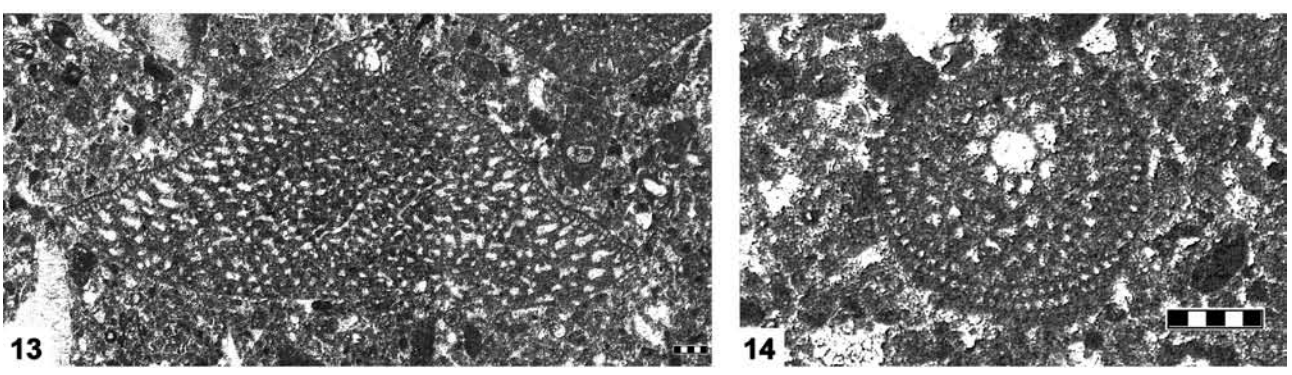
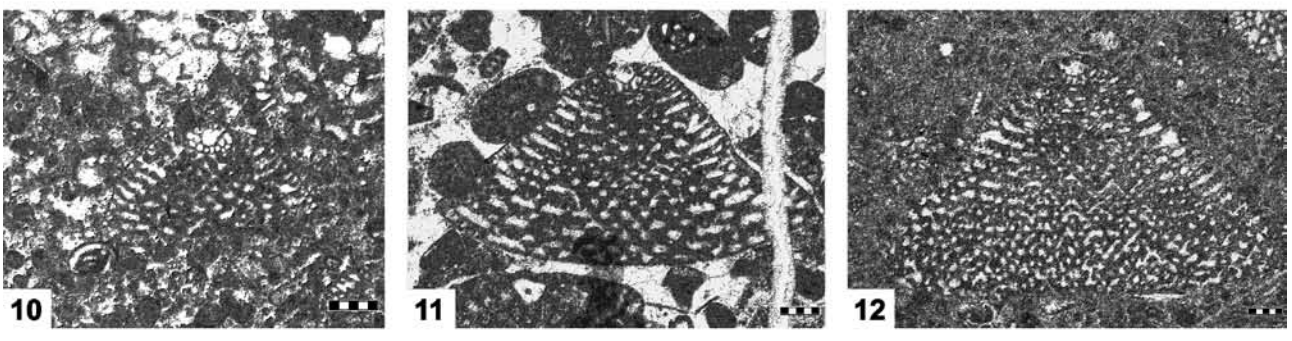
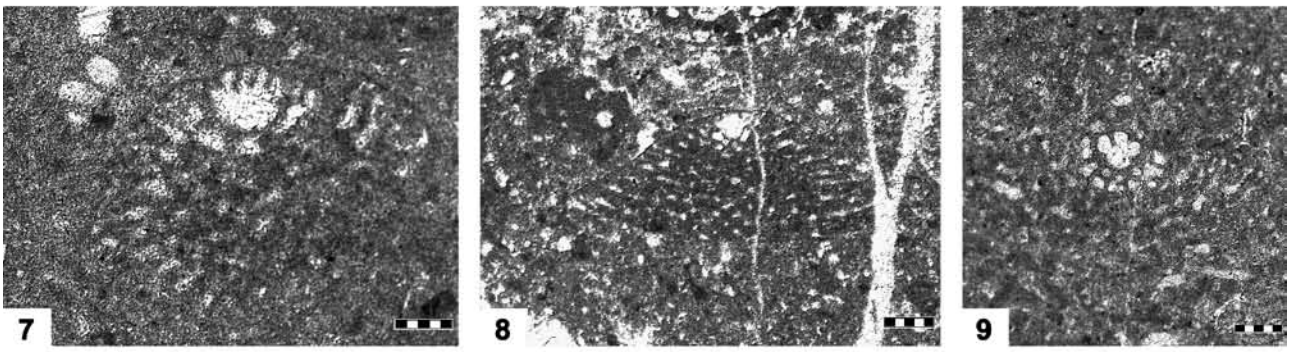
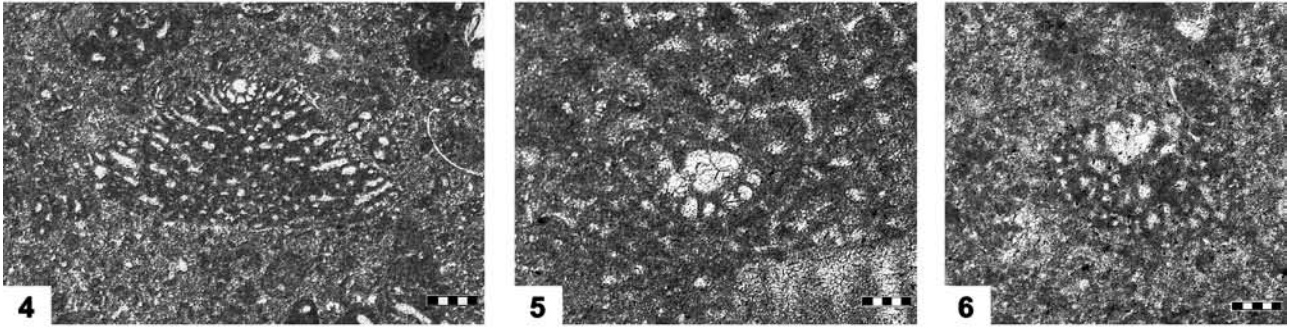
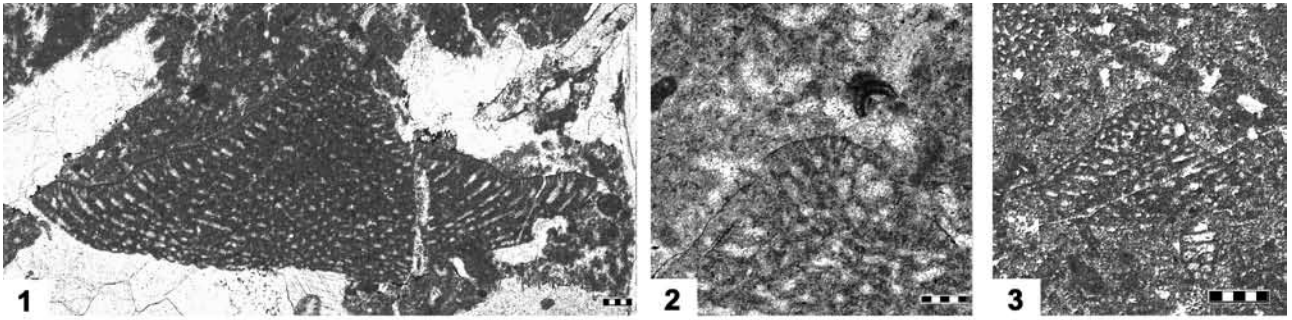


**PLATE XIV**

- 1–4 *Praeorbitolina wienandsi* SCHROEDER, Early Aptian; 2 – embryonic area – detail from Fig. 1; 1–3: Ogulin area, 4: Dinara Mt., Croatia.
- 5 Transitional form between *Praeorbitolina wienandsi* SCHROEDER and *Mesorbitolina lotzei* SCHROEDER, Early Aptian; Ogulin area, Croatia.
- 6–9 *Mesorbitolina lotzei* SCHROEDER, Early Aptian; 6: Dinara Mt., 7–9: Ogulin area, Croatia.
- 10 Transitional form between *Mesorbitolina lotzei* SCHROEDER and *Mesorbitolina parva* DOUGLASS transitional beds Early–Late Aptian, Jajce area, Bosnia and Herzegovina.
- 11–13 *Mesorbitolina parva* DOUGLASS, Late Aptian–Early Albian; 11–13: Ogulin area, Croatia.
- 14 *Mesorbitolina parva* DOUGLASS – *Mesorbitolina texana* (ROEMER), Late Aptian–Early Albian; Ogulin area, Croatia.

Scale bars – 1, 13: 0.5 mm, 2, 6–7, 9: 0.1mm, 3–5, 8, 10–12, 14: 0.2 mm.

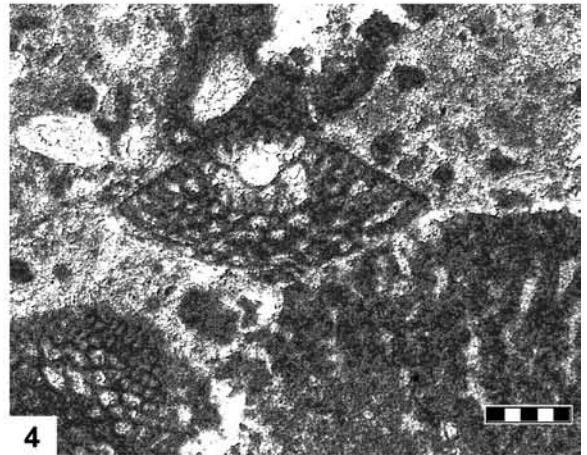
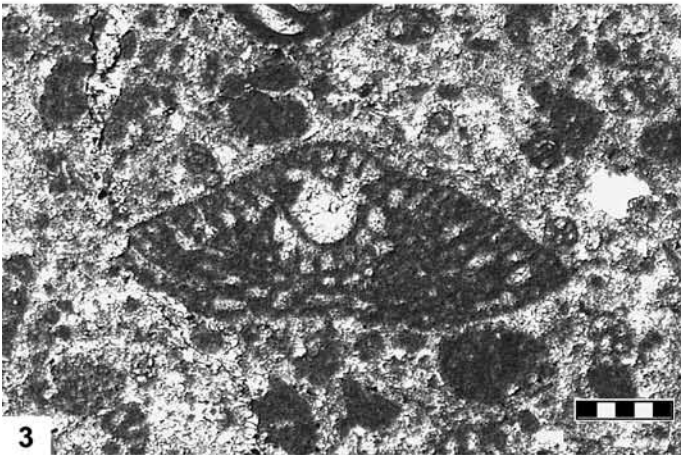
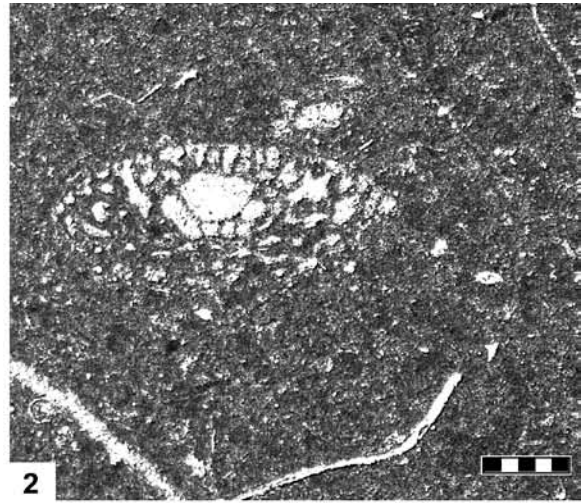
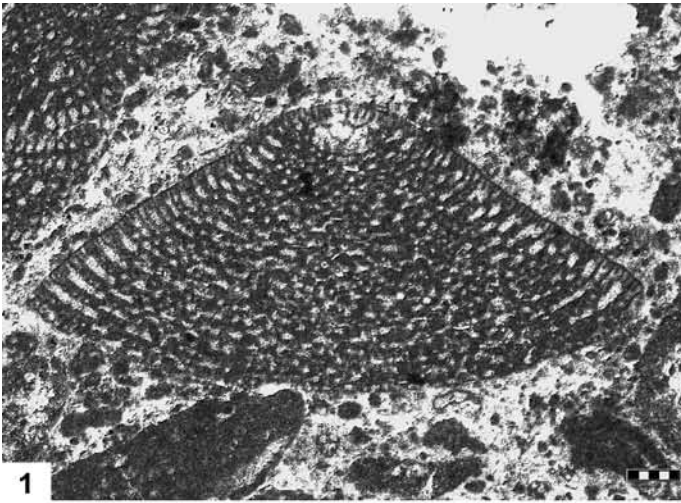


**PLATE XV**

1–5 *Mesorbitolina texana* (ROEMER), Late Aptian–Early Albian; 1, 3–5: Jajce area, Bosnia and Herzegovina,  
2: Ogulin area, Croatia.

Scale bars – 0.2 mm.

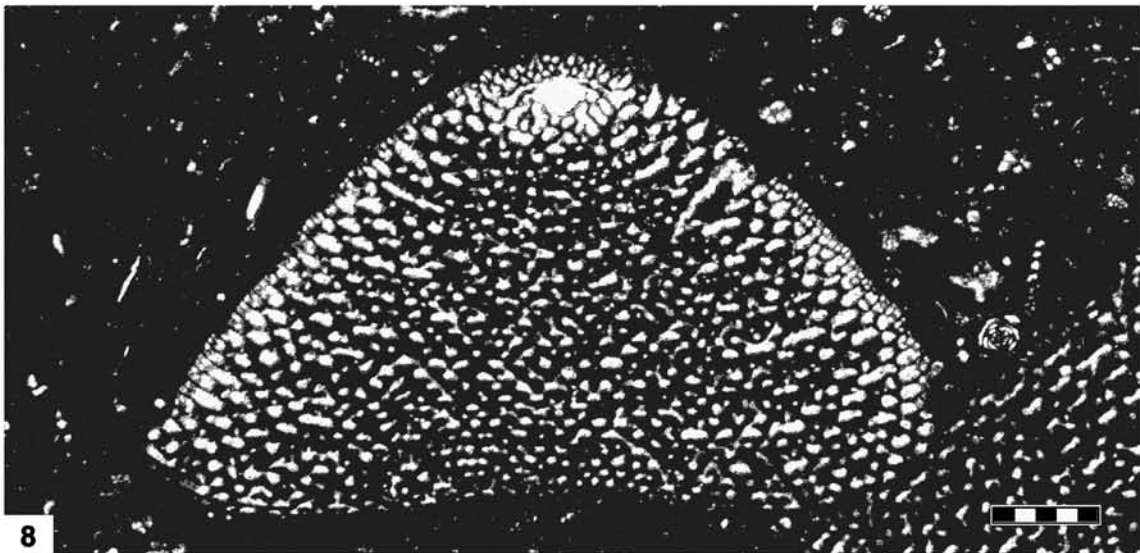
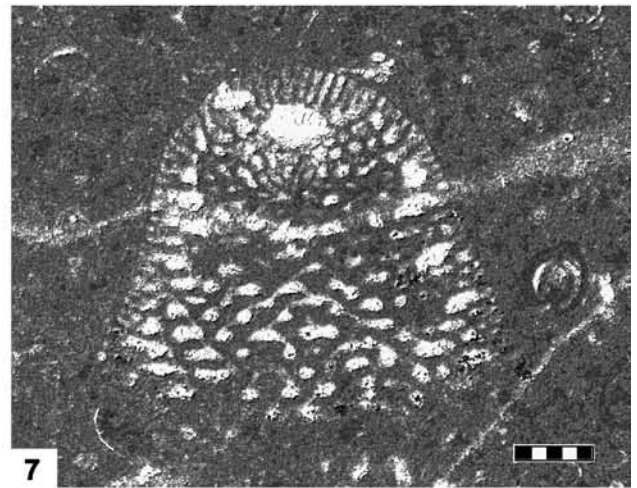
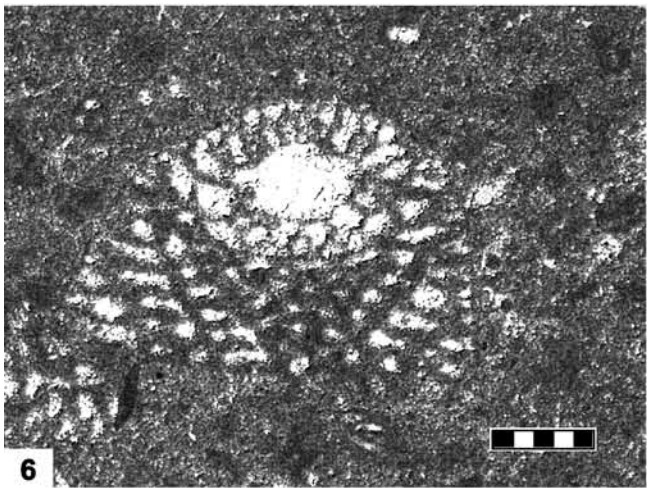
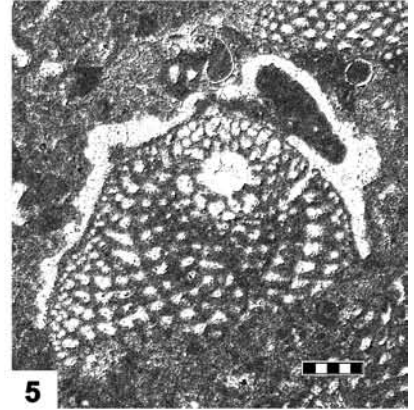
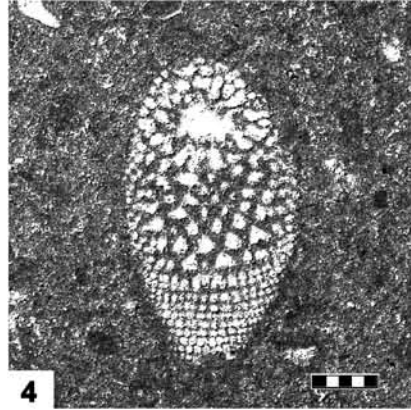
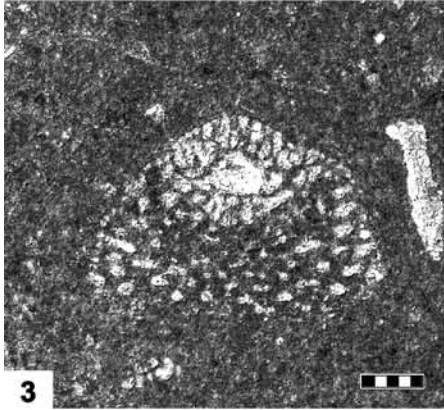
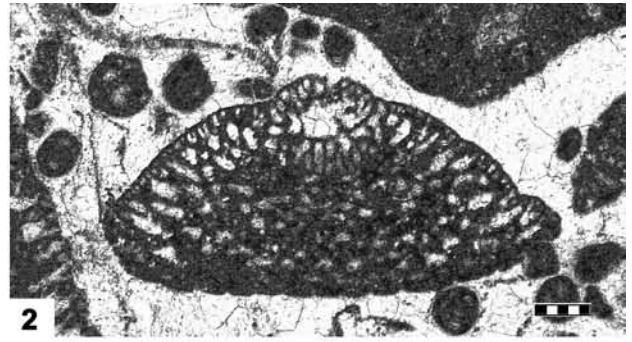
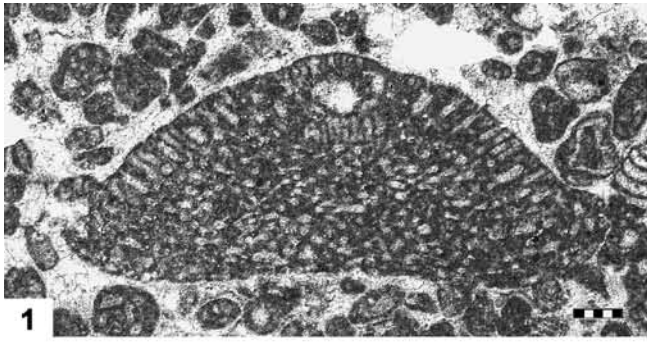




**PLATE XVI**

- 1–2 Transitional forms between *Mesorbitolina texana* (ROEMER) and *Mesorbitolina subconcava* LEYMERIE; Early Albian, Ogulin area, Croatia.
- 3–8 *Mesorbitolina subconcava* LEYMERIE, Early Albian; 3–6: Ogulin area, Croatia, 7–8: Banja Luka area, Bosnia and Herzegovina.

Scale bars – 1–7: 0.2 mm, 8: 0.5 mm.

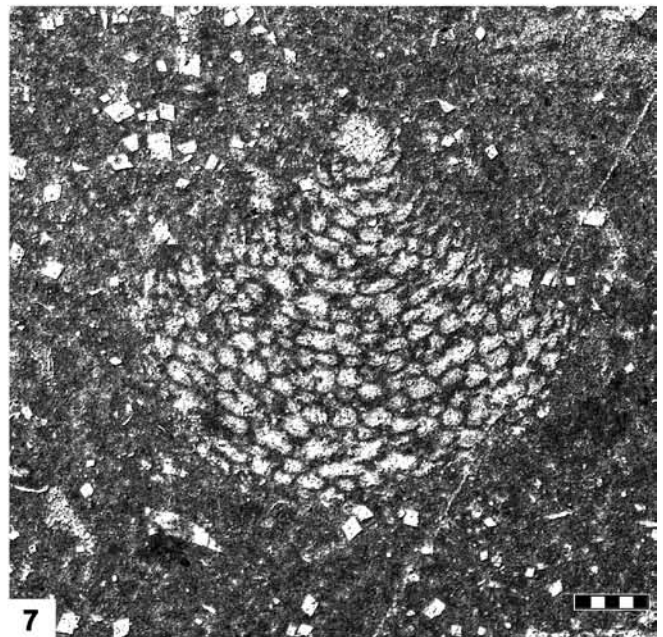
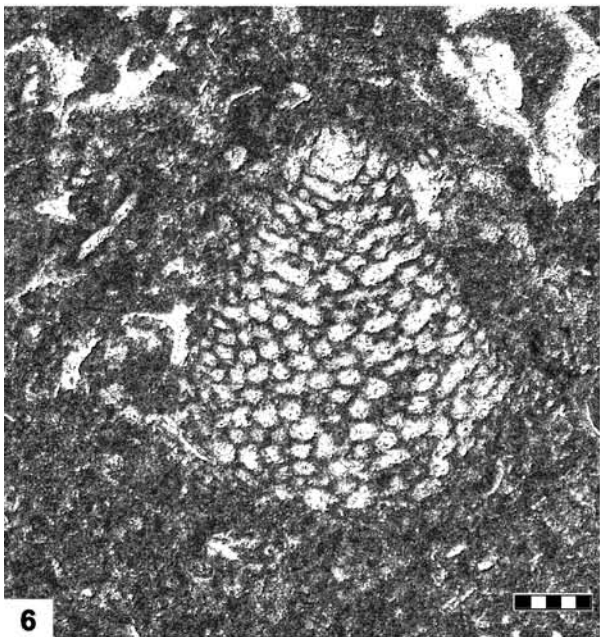
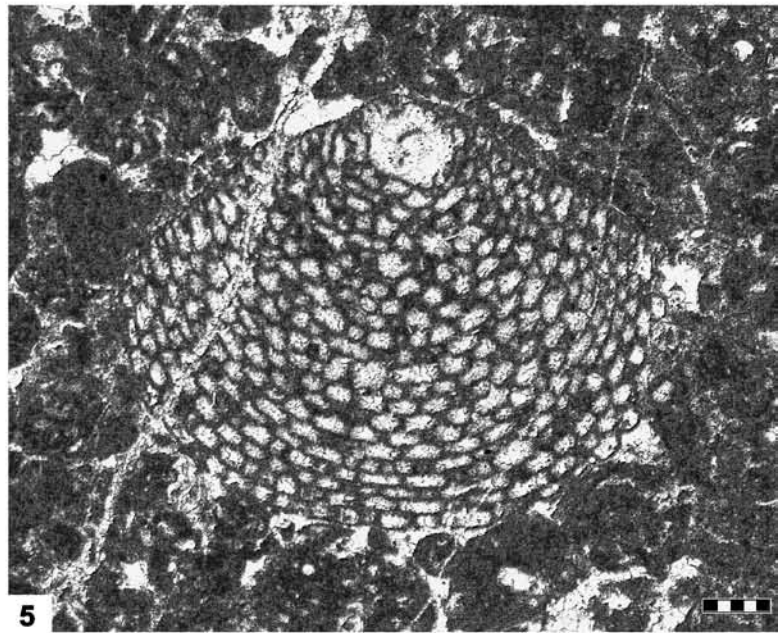
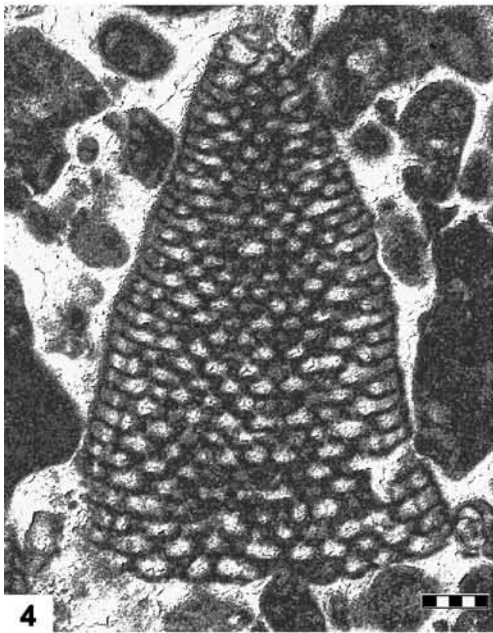
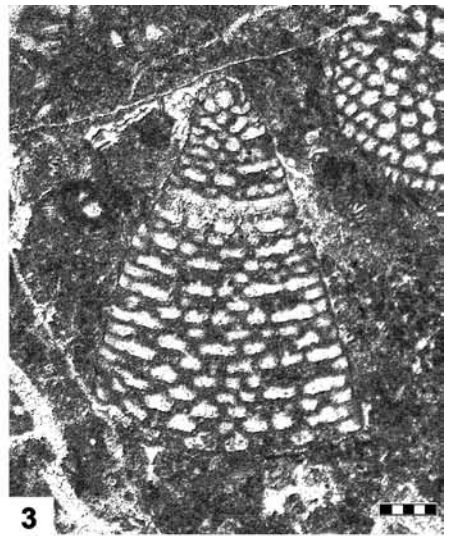
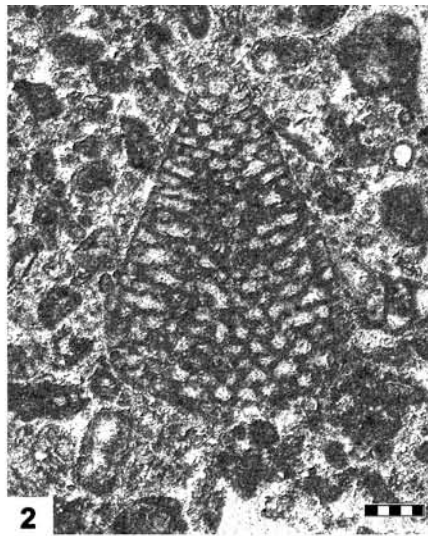


**PLATE XVII**

- 1–4      “*Valdanchella*” *dercourtii* DECROUEZ & MOULLADE, Late Albian; 1–2: island of Korčula, 3: Dinara Mt., 4: island of Veli Brijun, Croatia.
- 5–7      *Neoiraquia convexa* DANILOVA, Late Albian; megalosphaeric forms, 5–6: Dubrovnik area, 7: Biokovo Mt., Croatia.

Scale bars – 0.2 mm.

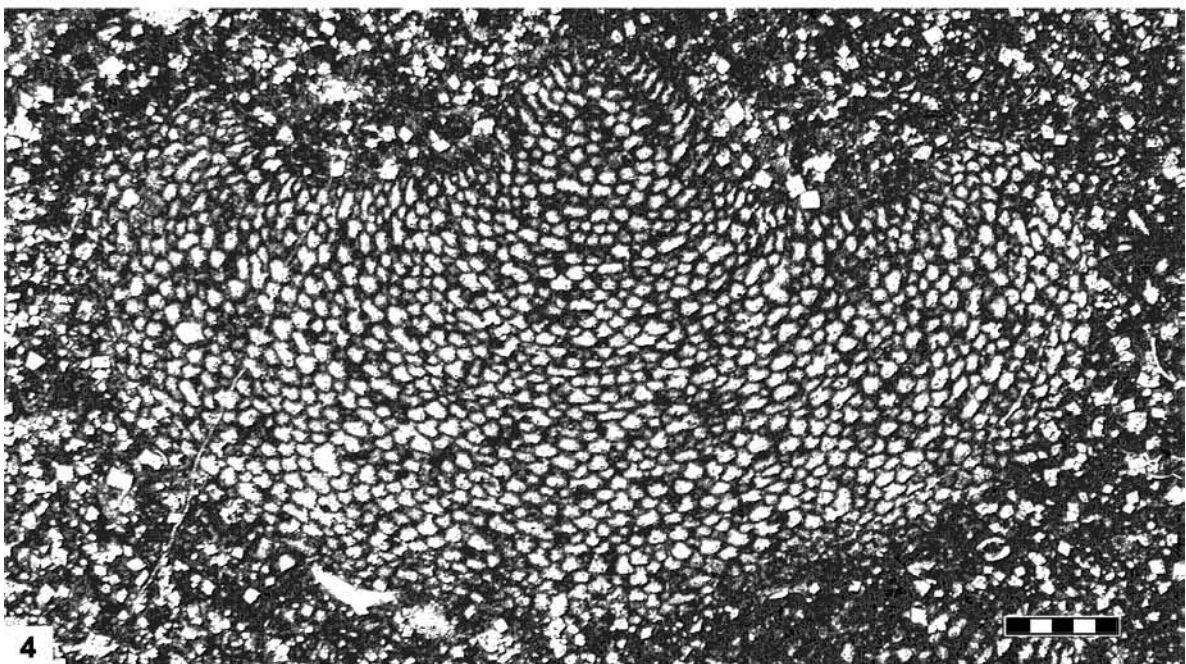
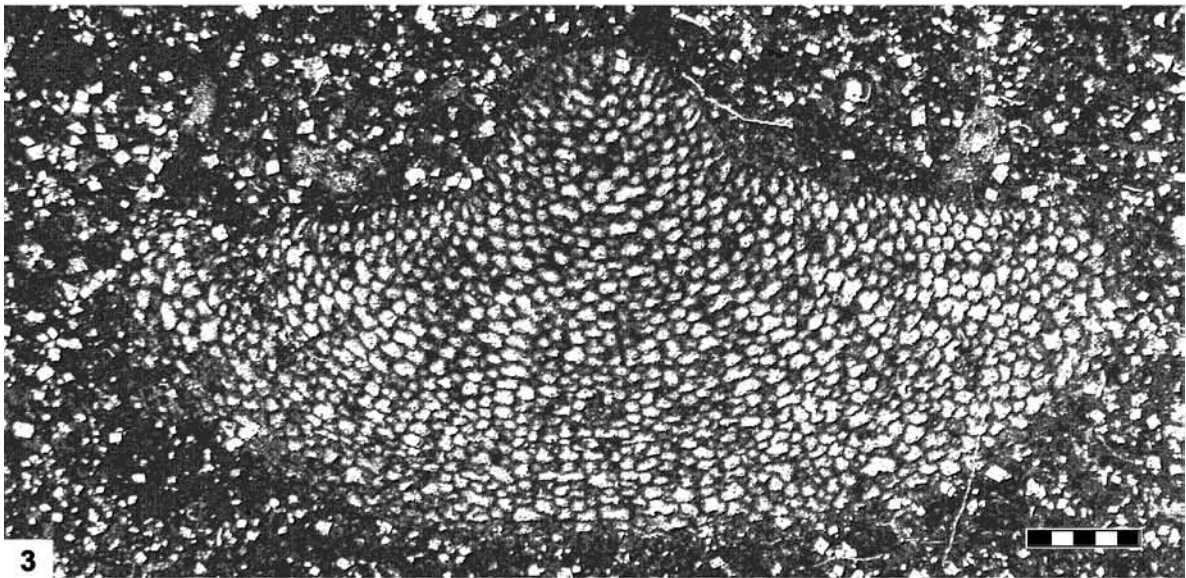
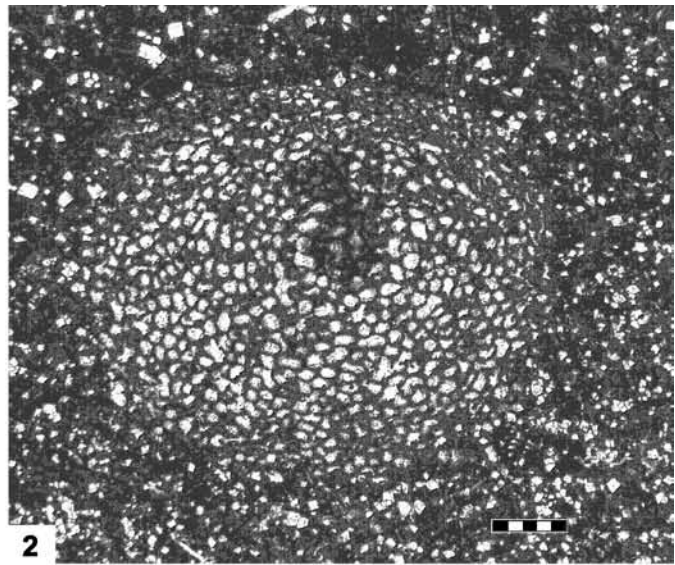
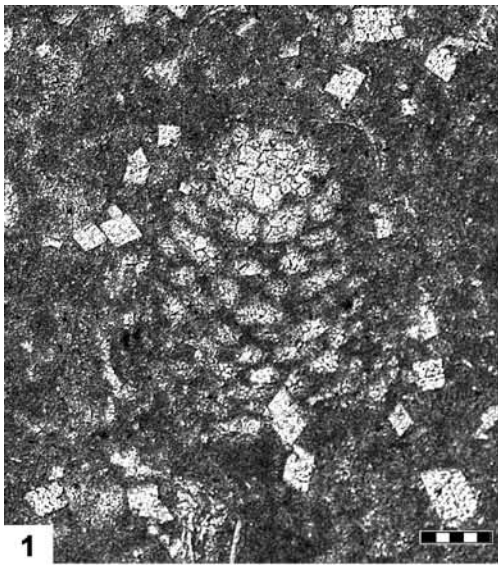




**PLATE XVIII**

1–4 *Neoiraquia convexa* DANILOVA, Late Albian; 1 – megalosphaeric form, 2–4 – microsphaeric forms;  
Biokovo Mt., Croatia.

Scale bars – 1: 0.1 mm, 2–4: 0.5 mm.

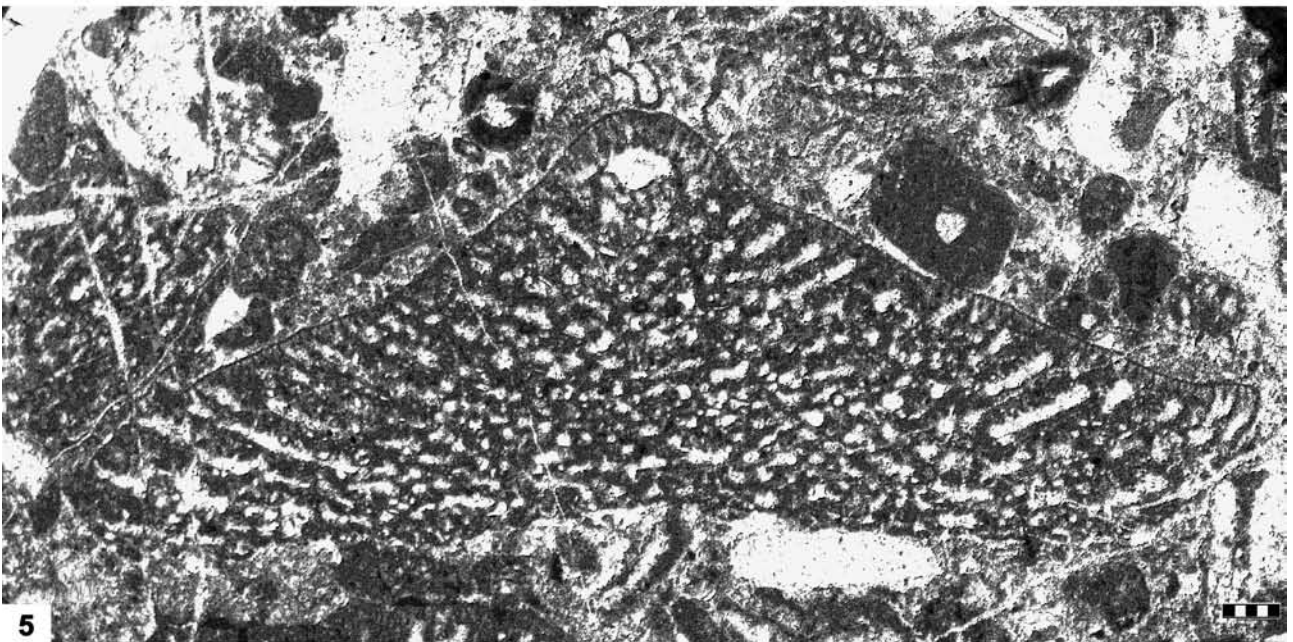
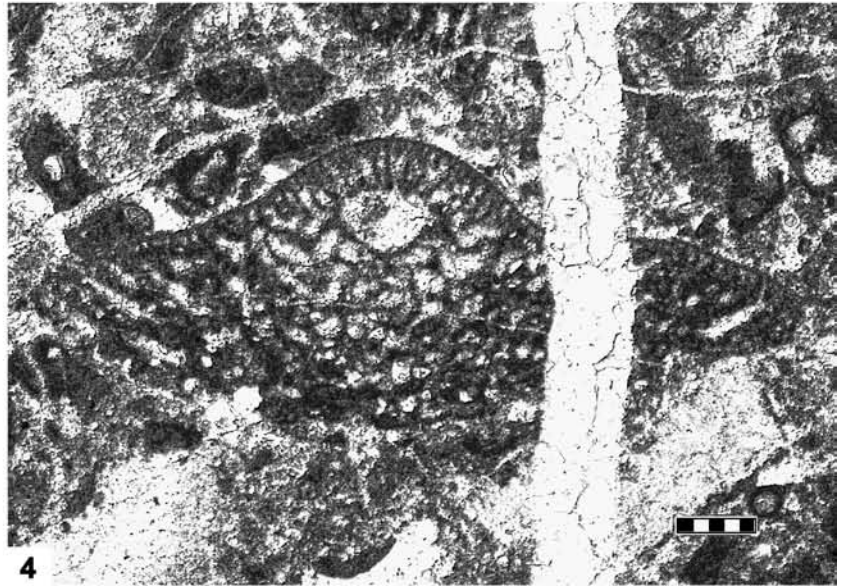
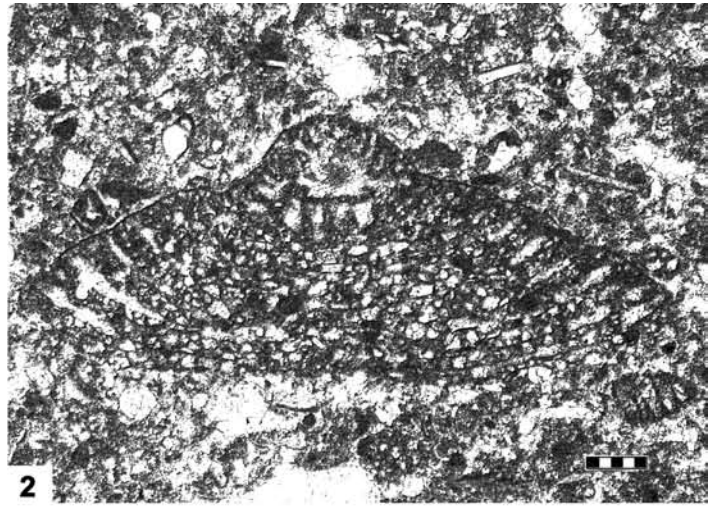
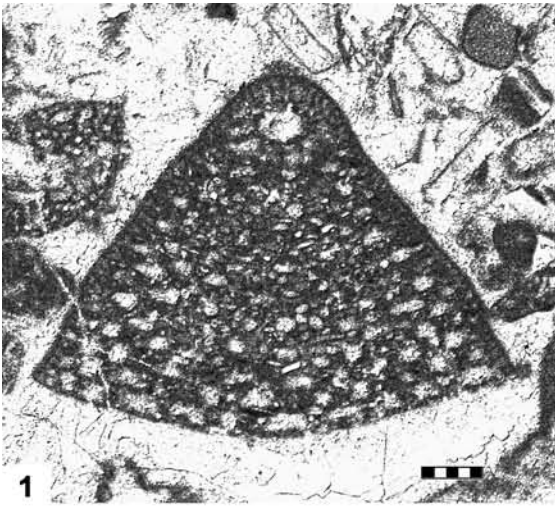


**PLATE XIX**

1–5 *Conicorbitolina conica* (D'ARCHIAC), Early–Middle Cenomanian; 1, 3–5: Ogulin area, 2: Istria, Croatia.

Scale bars – 1–4: 0.2 mm, 5: 0.5 mm.



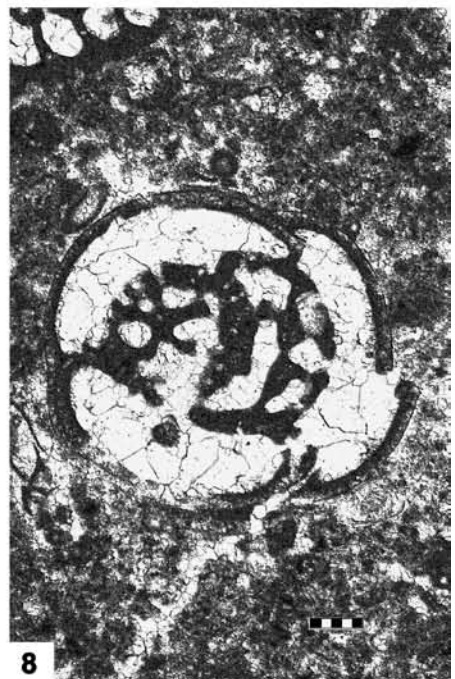
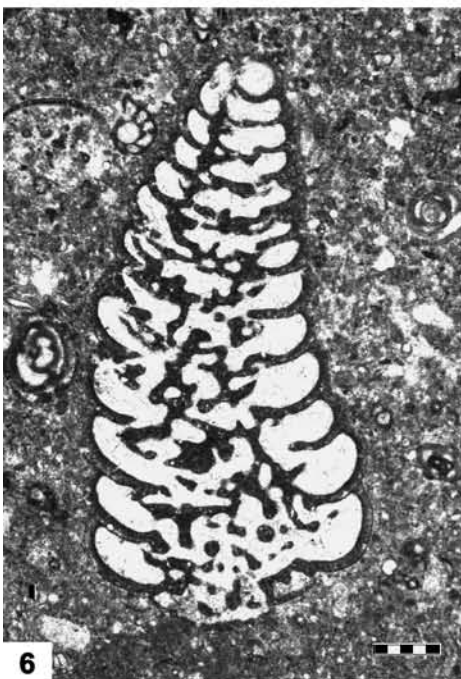
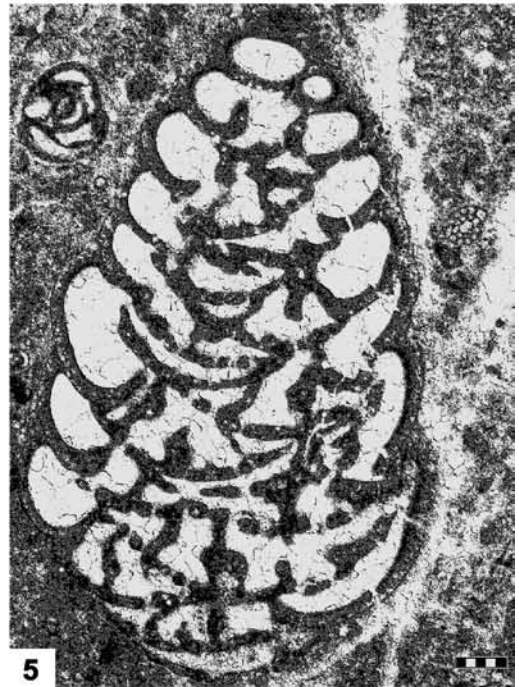
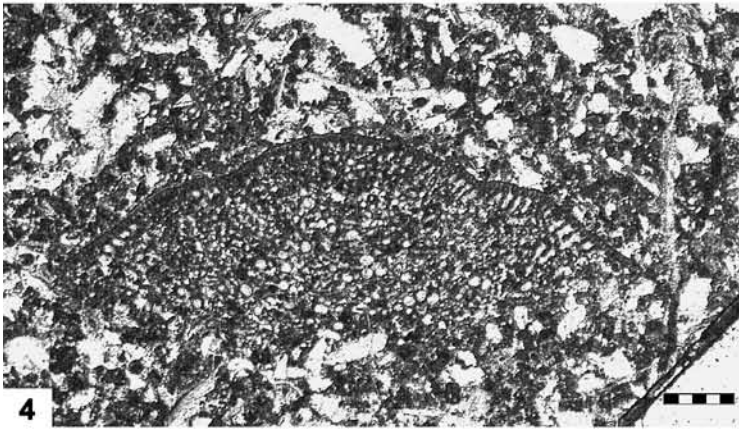
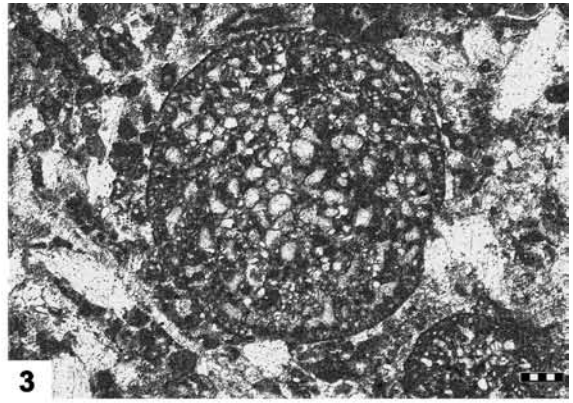
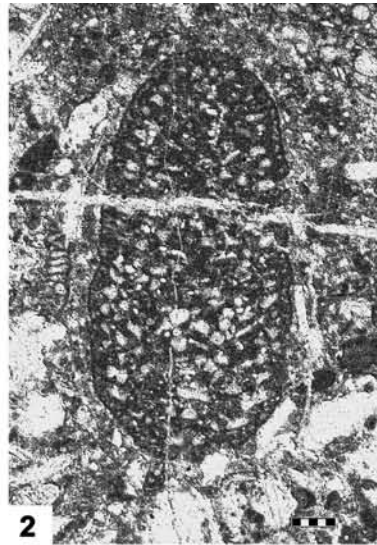
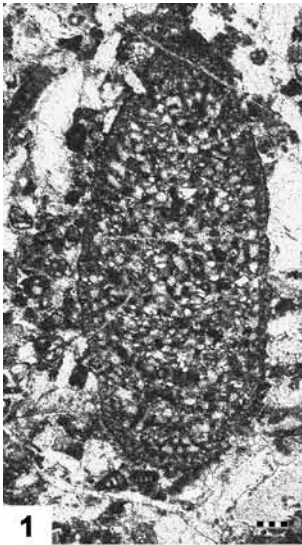


**PLATE XX**

1–4 *Conicorbitolina cuvillieri* (MOULLADE), Early–Middle Cenomanian, Ogulin area, Croatia.

5–8 *Chrysalidina gradata* D'ORBIGNY, Middle–Late Cenomanian; 5–6, 8: Istria, 7: Unešić, Croatia.

Scale bars – 1, 4, 6–7: 0.5 mm, 2–3, 5, 8: 0.2 mm.

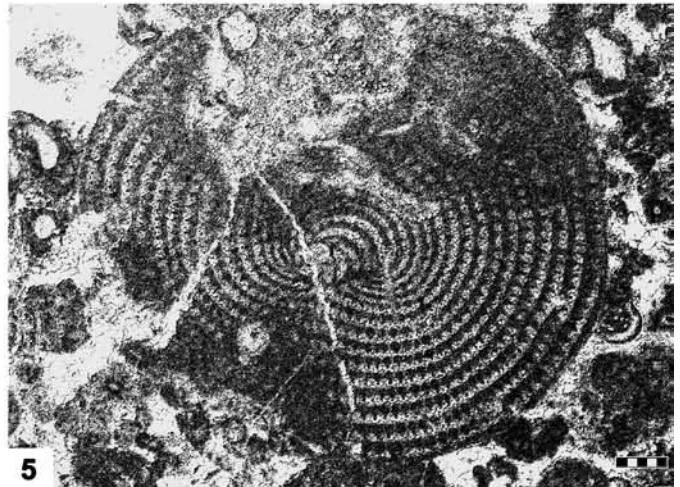
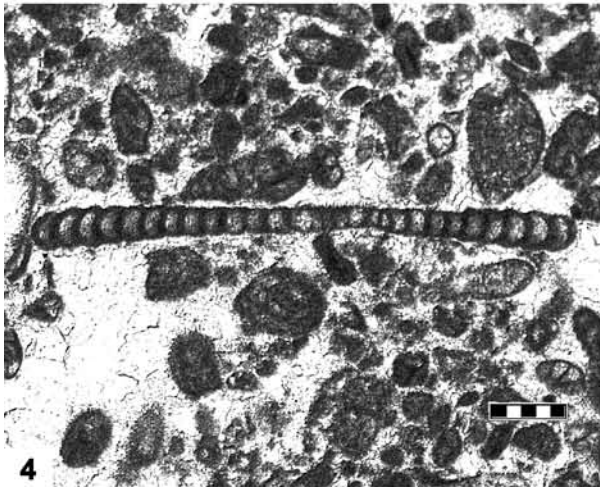
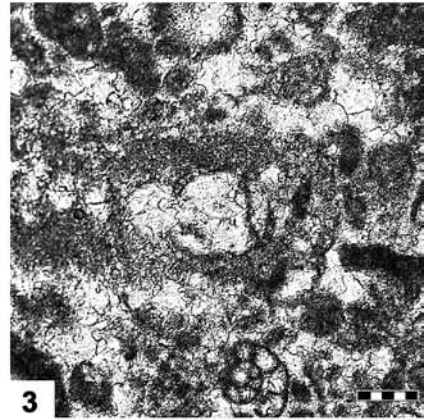
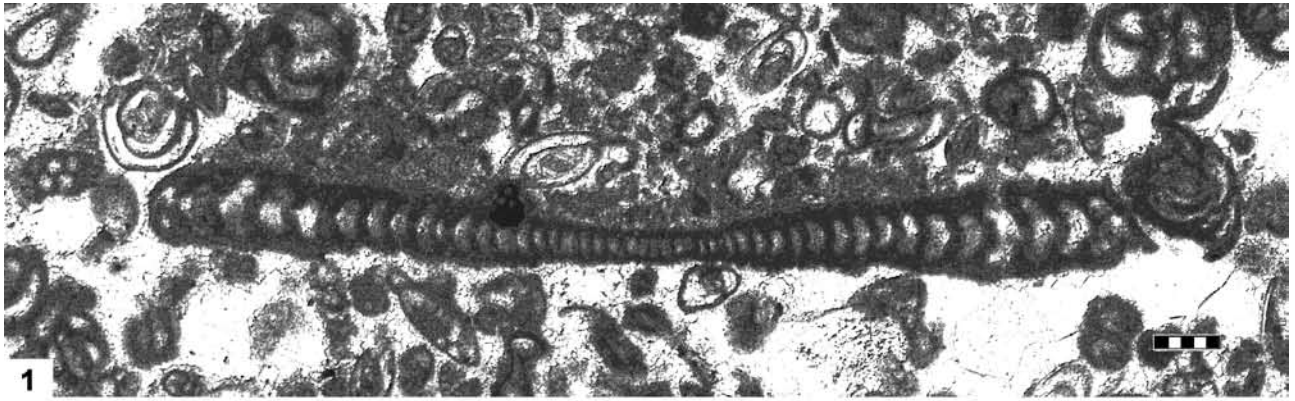


**PLATE XXI**

- 1–5 *Pastrikella balcanica* CHERCHI, RADOIČIĆ & SCHROEDER, Middle–Late Cenomanian; 1: Glamoč area, Bosnia and Herzegovina, 2: Unešić, 3, 5: Istria, 4: Ogulin area, Croatia.
- 6–9 *Vidalina radoicicae* CHERCHI & SCHROEDER, 1985, Late Cenomanian; 6: Istria, 7: Unešić, 8–9: Biokovo Mt., Croatia.

Scale bars – 1–5: 0.2 mm, 6–9: 0.1 mm.

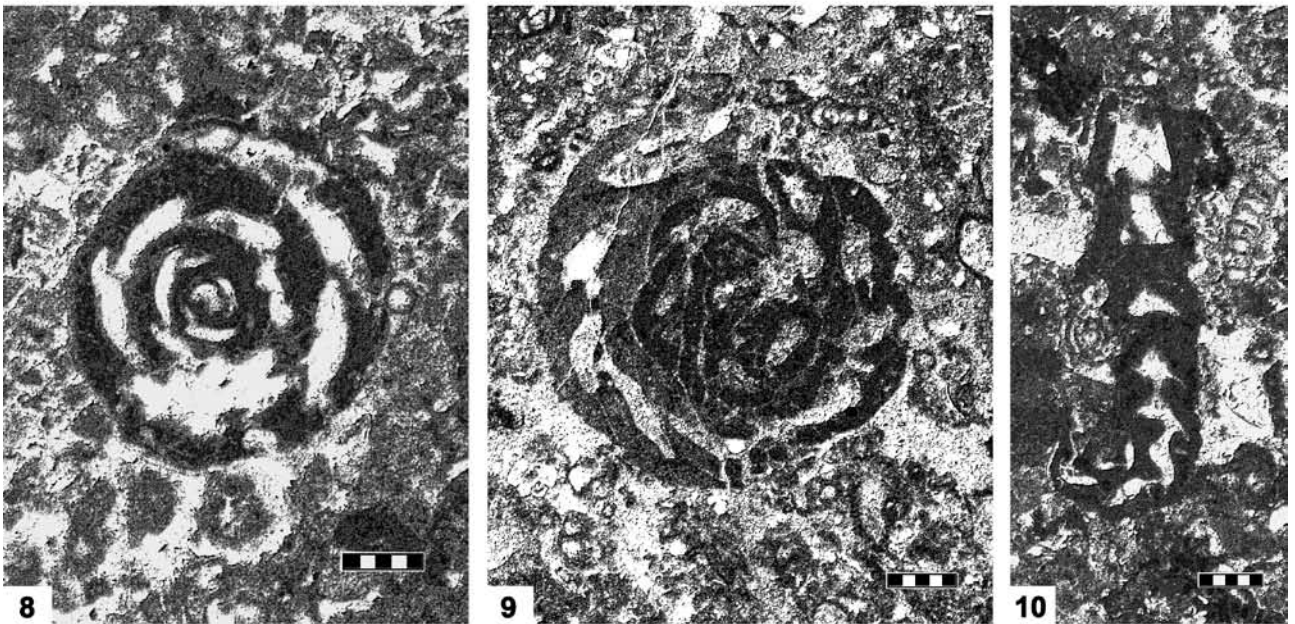
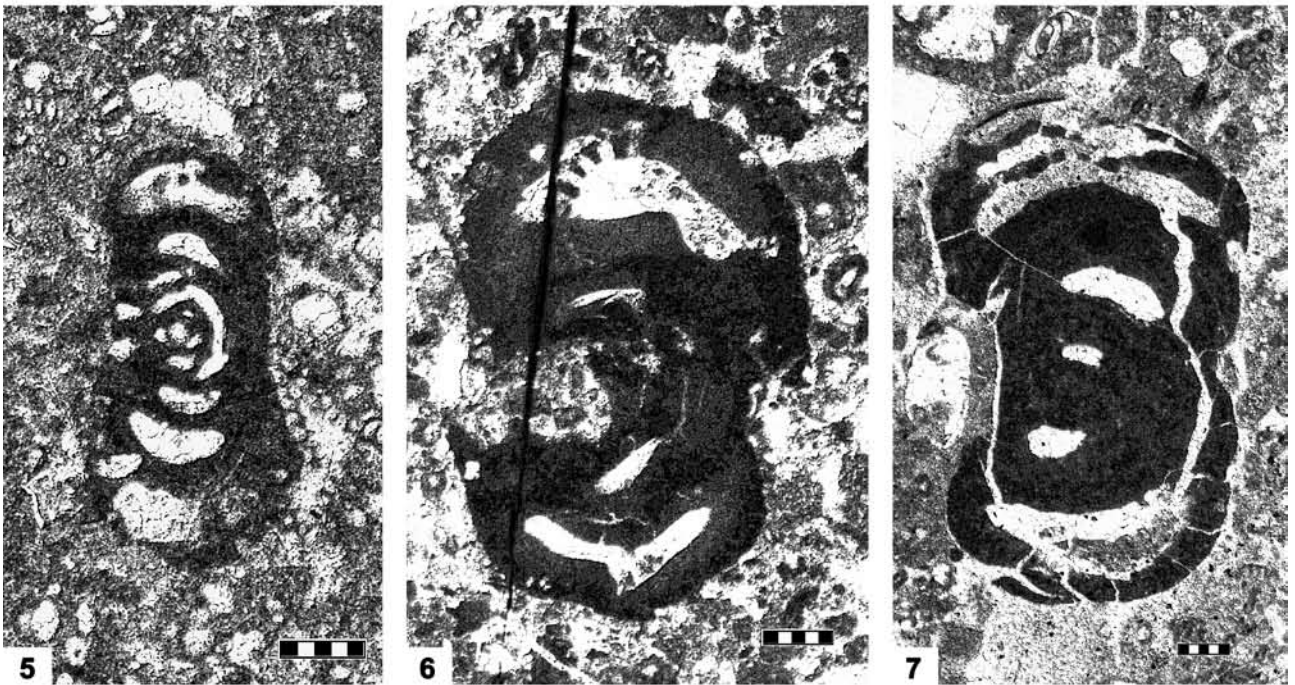
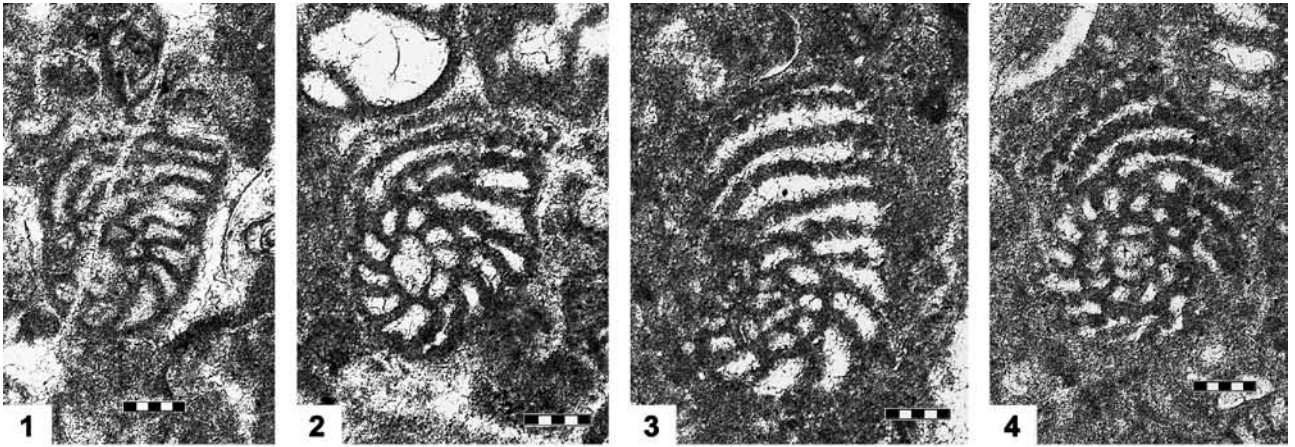




**PLATE XXII**

- 1–4 *Pseudocyclammina sphaeroidea* GENDROT, Upper Turonian–Coniacian, Biokovo Mt., Croatia.
- 5–10 *Scandonea samnitica* DE CASTRO, Coniacian–Santonian; 5–8, 10: Biokovo Mt., Croatia, 9: Jajce area, Bosnia and Herzegovina.

Scale bars – 1–4: 0.1 mm, 5–10: 0.2 mm.

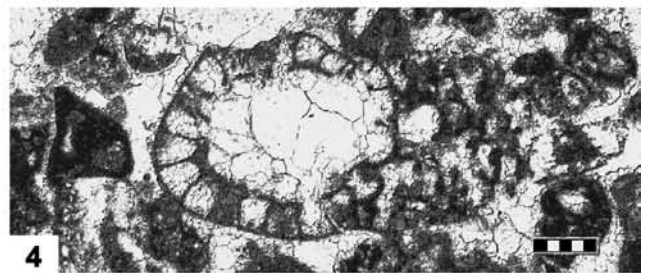
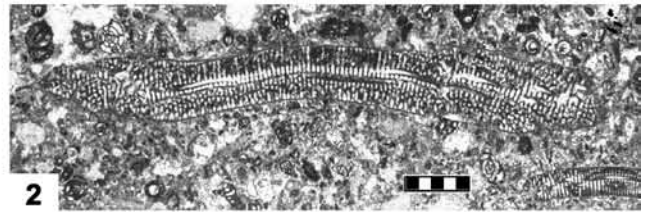
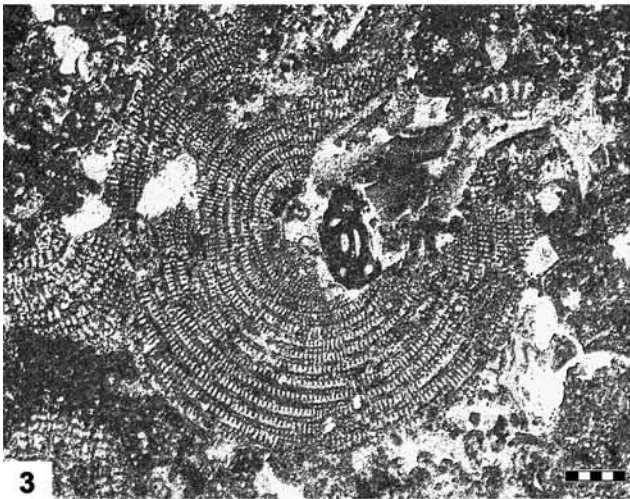
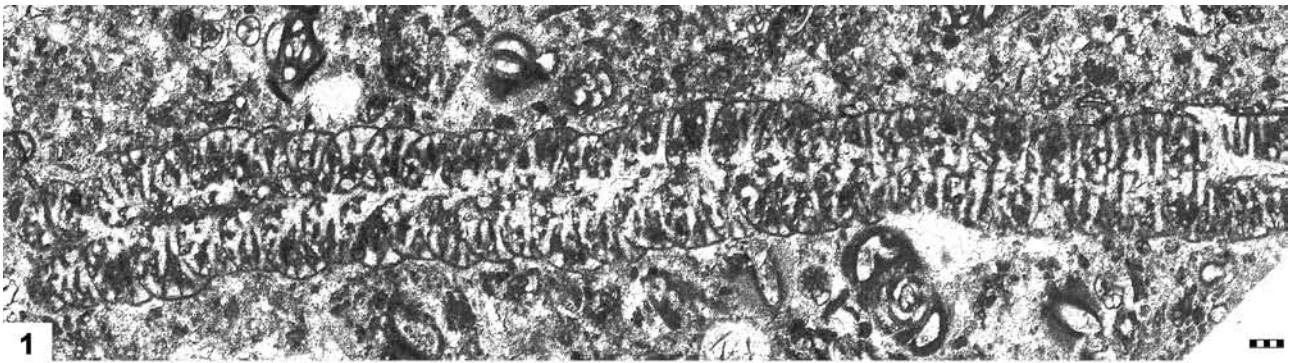


**PLATE XXIII**

- 1–4 *Dicyclina schlumbergeri* MUNIER-CHALMAS, Santonian–Campanian; 1–2: Jajce area, Bosnia and Herzegovina, 3: Ogulin area, 4: Biokovo Mt., Croatia.
- 5–10 *Murgella lata* LUPERTO SINNI; Late Santonian; 5: Unešić, 6, 10: Bunić, Croatia, 7–9: Jajce area, Bosnia and Herzegovina.

Scale bars – 1, 3, 5, 7–9: 0.5 mm, 2: 1.0 mm, 4, 6, 10: 0.2 mm.

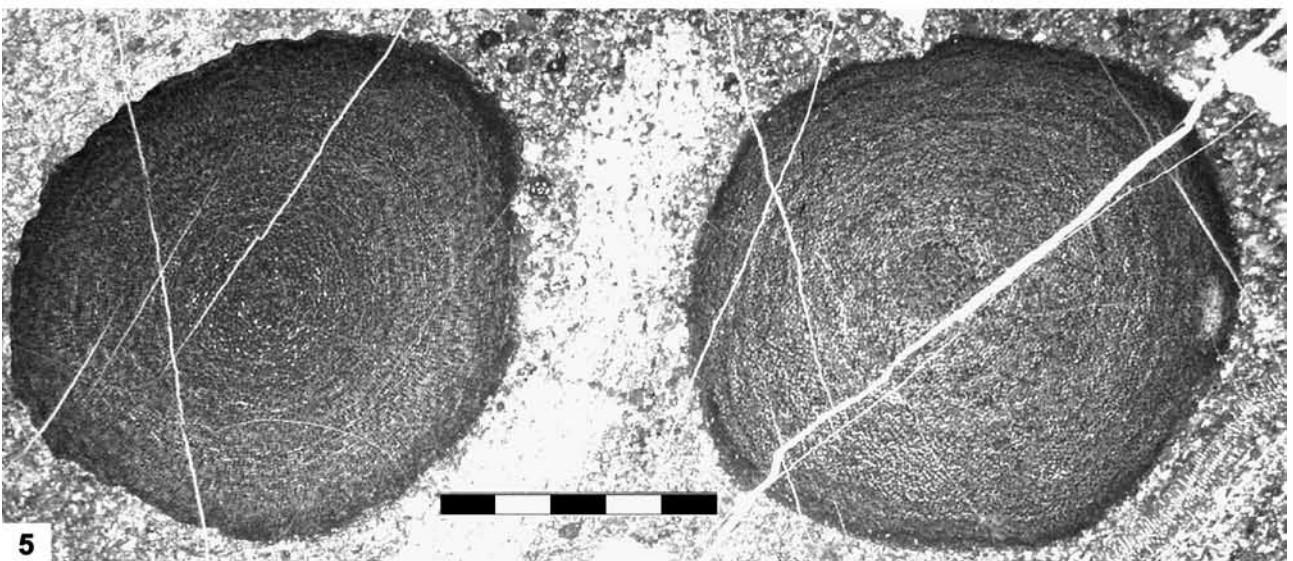
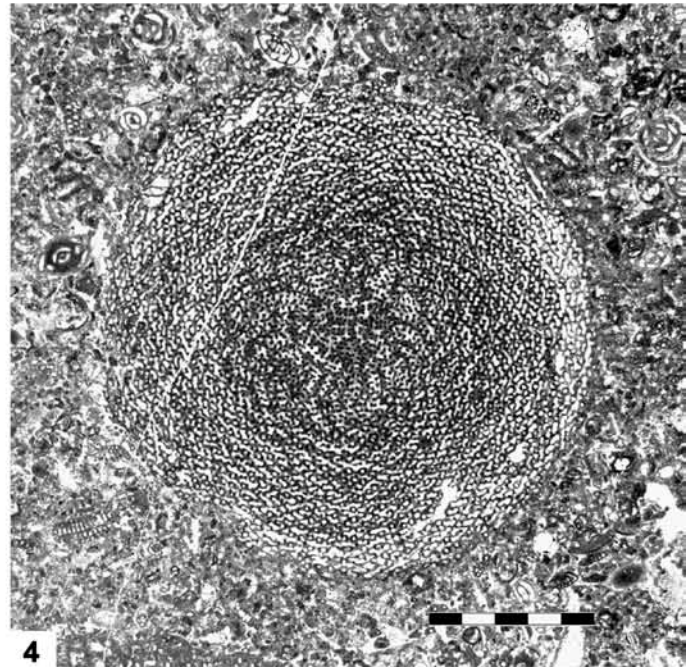
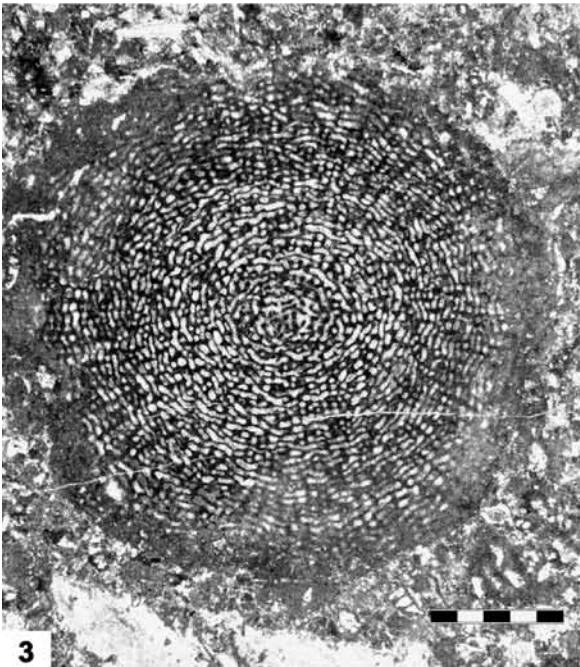
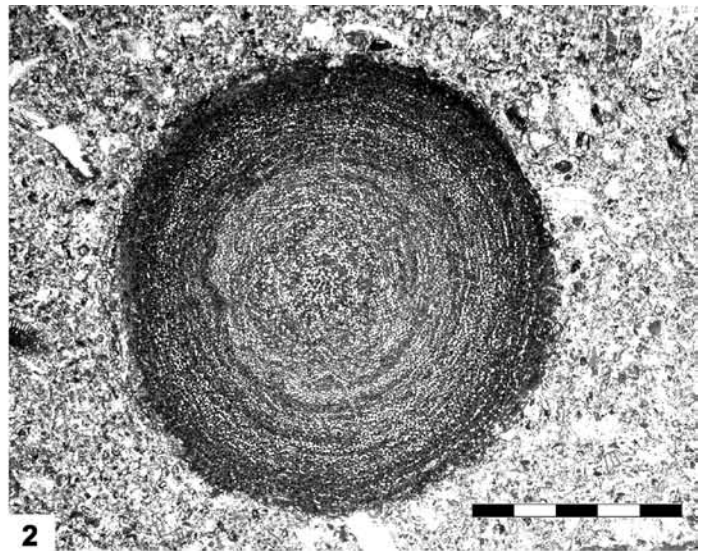
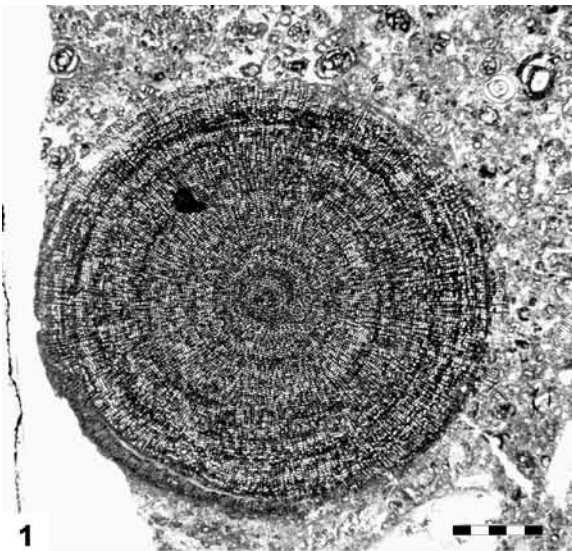




**PLATE XXIV**

1–5 *Keramosphaerina tergestina* STACHE, Late Santonian; 1, 4: Jajce area, Bosnia and Herzegovina,  
2–3: Biokovo Mt., 5: Mosor Mt., Croatia.

Scale bars – 1, 4: 2 mm, 2, 5: 5 mm, 3: 1 mm.

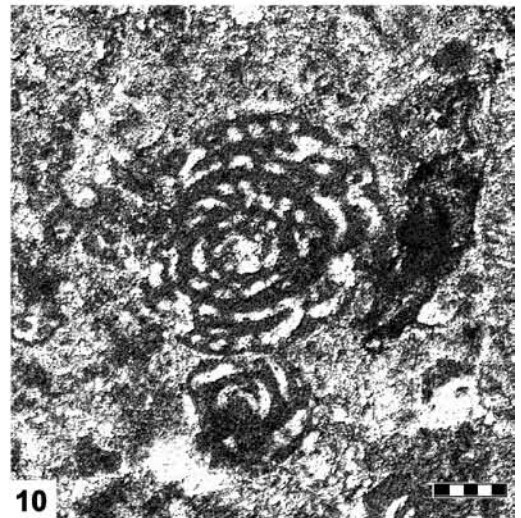
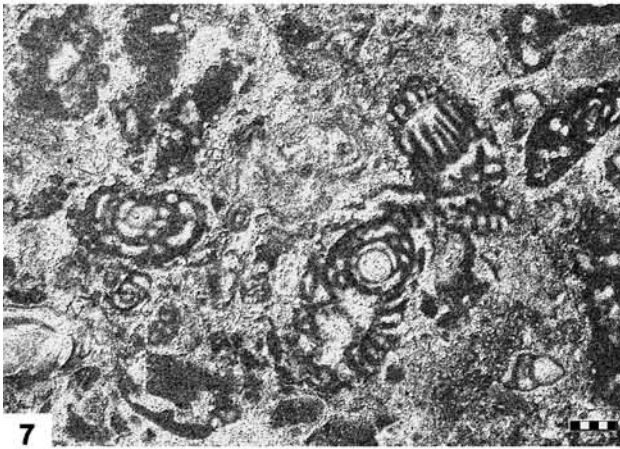
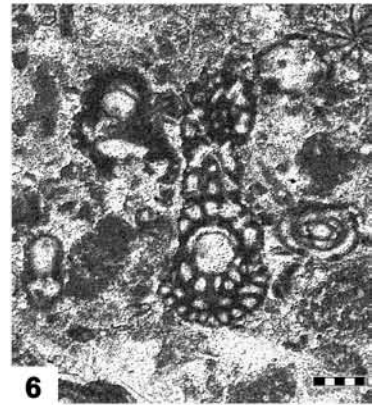
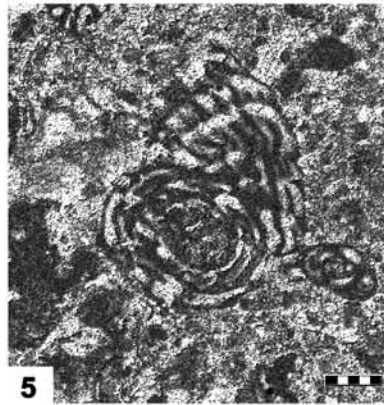
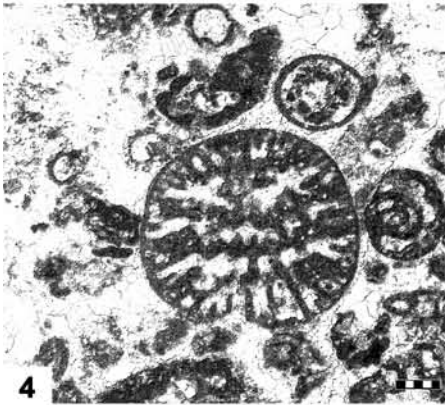
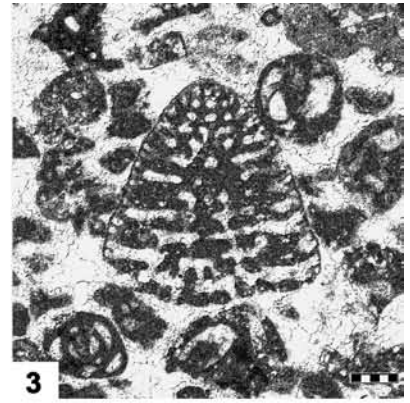
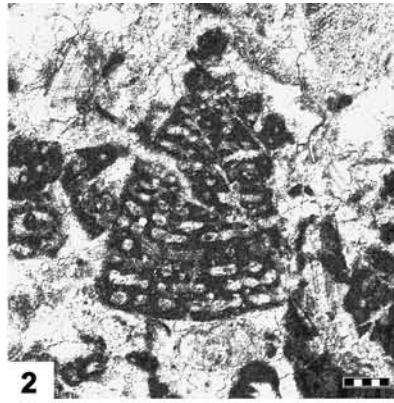
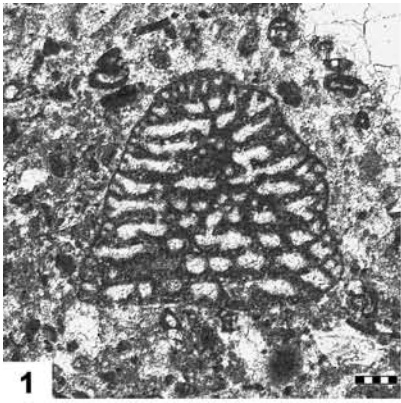


**PLATE XXV**

- 1–4 *Calveziconus lecalvezae* CAUS & CORNELLA, Campanian; 1: Jajce area, Bosnia and Herzegovina, 2–4: Biokovo Mt., Croatia.
- 5–8, 10 *Murciella cuvillieri* FOURCADE, Early Maastrichtian; Makarska, Croatia.
- 9 *Murciella cuvillieri* FOURCADE and *Cuneolina ketini* INAN, Maastrichtian; Makarska, Croatia.

Scale bars – 0.2 mm





**PLATE XXVI**

- 1–7 *Rhapydionina liburnica* (STACHE), Maastrichtian; 1–6 – megalosphaeric forms, 7 – microsphaeric form; 1, 4–6: Konavle, 2: island of Brač, 3: Velika Kapela Mt., Croatia, 7: Divača area, Slovenia.
- 8–13 *Fleuryana adriatica* DE CASTRO, DROBNE & GUŠIĆ, Maastrichtian; 8–12: Divača area, Slovenia, 13: Makarska, Croatia.

Scale bars – 1–6: 0.2 mm, 7: 1.0 mm, 8–13: 0.1 mm.

