

*Vercorsella camposaurii* (SARTONI & CRESCENTI, 1962)  
*Vercorsella laurentii* (SARTONI & CRESCENTI, 1962)  
*Vercorsella scarsellai* (DE CASTRO, 1963)  
*Vercorsella tenuis* (VELIĆ & GUŠIĆ, 1973)  
*Vercorsella wintereri* ARNAUD-VANNEAU & SLITER, 1995  
*Vidalina hispanica* SCHLUMBERGER, 1900  
*Vidalina radoicicae* CHERCHI & SCHROEDER, 1985  
*Voloshinoides murgensis* LUPERTO SINNI & MASSE, 1993

## 2. Calcareous algae

*Campbelliella striata* (CAROZZI, 1954)  
*Clypeina besici* PANTIĆ, 1965  
*Clypeina jurassica* FAVRE, 1927  
*Palaeodasycladus mediterraneus* (PIA, 1920)  
*Pseudoclypeina cirici* RADOIČIĆ, 1970  
*Salpingoporella annulata* CAROZZI, 1953  
*Salpingoporella dinarica* RADOIČIĆ, 1959  
*Salpingoporella turgida* (RADOIČIĆ, 1964)  
*Selliporella donzellii* SARTONI & CRESCENTI, 1962

## PLATES

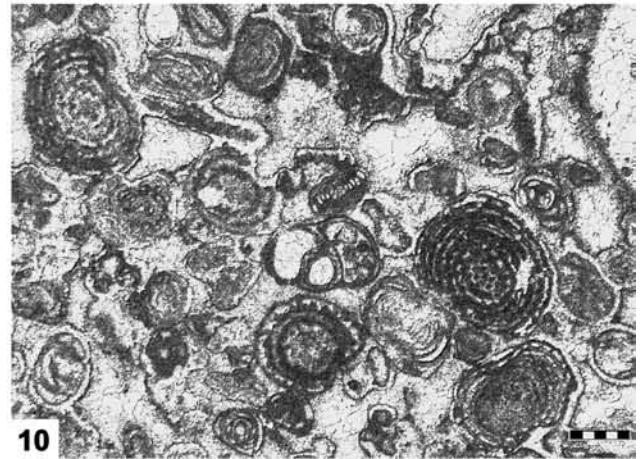
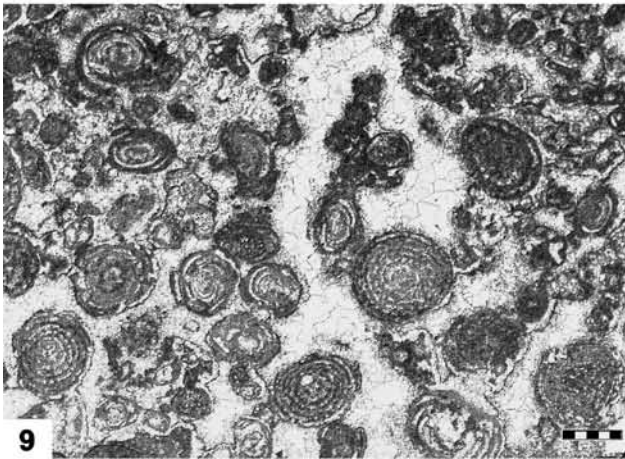
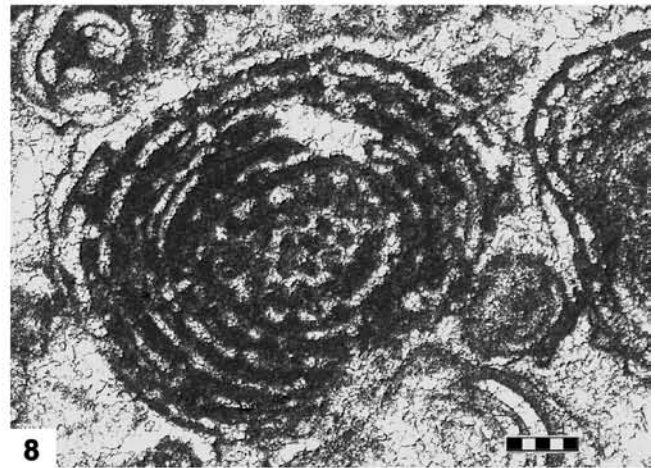
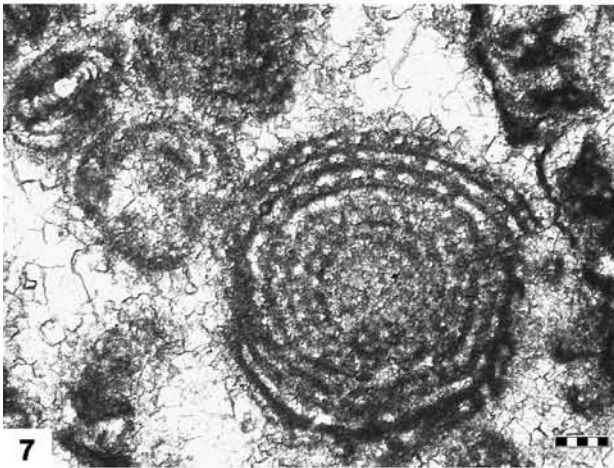
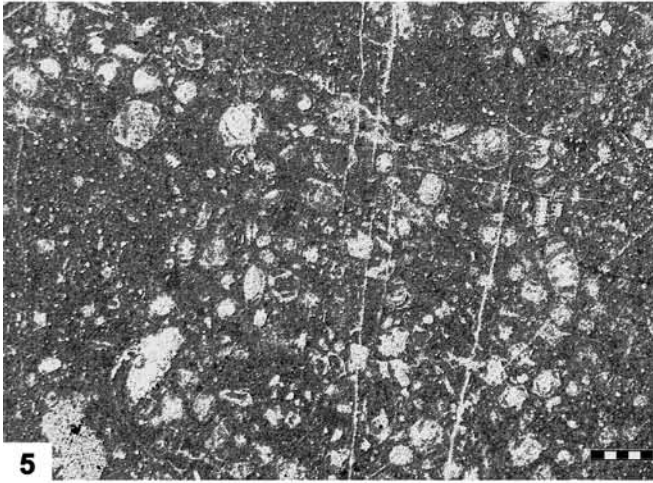
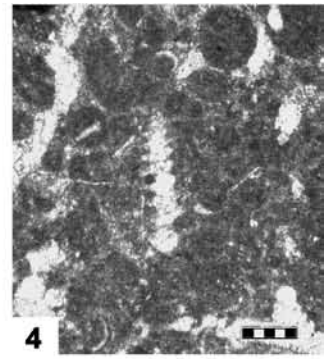
Plates were organized according to biostratigraphic criteria: only taxa which represent the basis for biostratigraphic zonation are presented. These are the most important index species after which the biozones were named. The majority of taxa cited in this paper will not be presented in plates, although some of them are also index species. These forms will be published in another paper, together with some previously undocumented or unknown species from the Karst Dinarides.

Most of the presented forms were photographed from my collection archived in the Croatian Geological Survey. The only exceptions are, as already mentioned, photomicrographs of *Murciella cuvillieri* (collection of Blanka CVETKO TEŠOVIĆ, University of Zagreb, Faculty of Natural Sciences) and photomicrographs of microspheric *Rhapydionina liburnica* and *Fleuryana adriatica* provided by Katica DROBNE (Palaeontological institute I. Rakovac of the Slovenian Academy of Sciences and Arts, Ljubljana, Slovenia).

**PLATE I**

- 1, 3–4 *Lamelliconus procerus* (LIEBUS), Carnian; 1, 3: Karlovac area, 4: Komiža, island of Vis, Croatia.
- 2 *Lamelliconus procerus* and *Aulotortus friedli* (KRISTAN-TOLLMANN); Karlovac area, Croatia.
- 5 Carnian biofacies with *Lamelliconus procerus* and *Aulotortus friedli*; Karlovac area, Croatia.
- 6–8 *Triasina hantkeni* MAJZON, Rhaetian; South Velebit Mt., Croatia.
- 9–10 Rhaetian biofacies with *Triasina hantkeni* and *Aulotortus sinuosus* WEYNSCHENK; South Velebit Mt., Croatia.

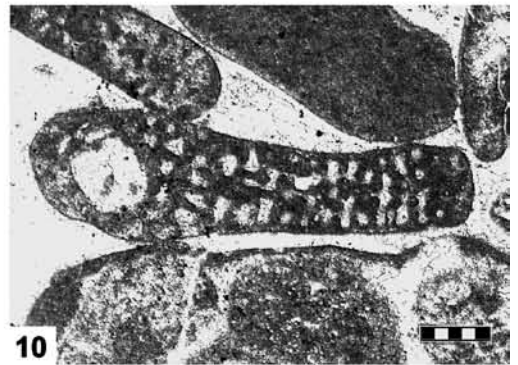
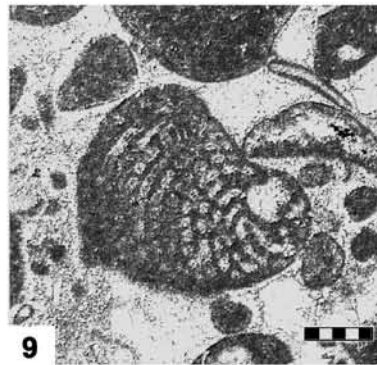
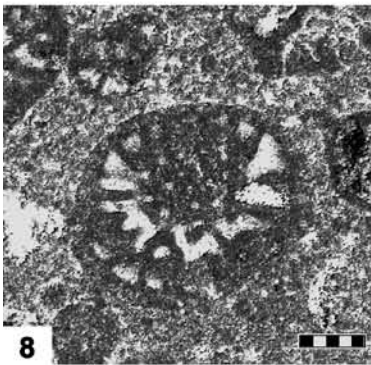
Scale bars – 1–4, 6–8: 0.2 mm; 5, 9–10: 0.5 mm.



**PLATE II**

- 1–4 *Mesoendothyra* sp., Sinemurian–Early Pliensbachian; 1–2, 4: Central Velebit Mt., 3: Gornje Jelenje, Croatia.
- 5–8 *Litiosepta recoarensis* CATI, Late Sinemurian–Early Pliensbachian; 5–6: Central Velebit Mt., 7–8: Gornje Jelenje, Croatia.
- 9–11 *Orbitopsella primaeva* (HENSON), Late Sinemurian–Early Pliensbachian; megalosphaeric forms, 9–10: South Velebit Mt., 11: North Velebit Mt.

Scale bars – 0.2 mm.

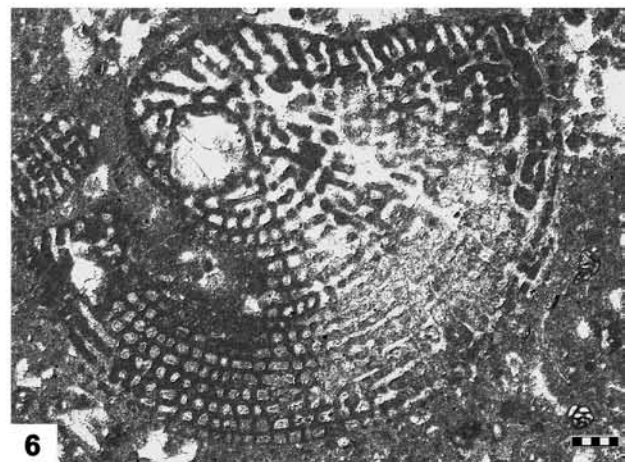
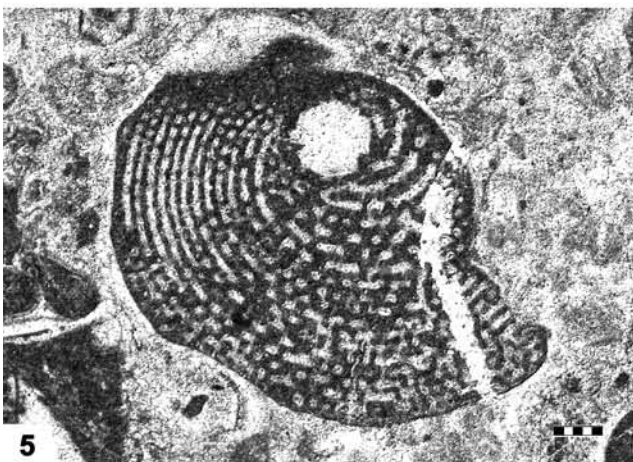
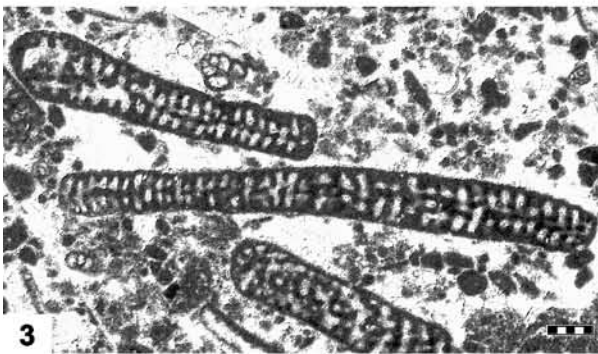
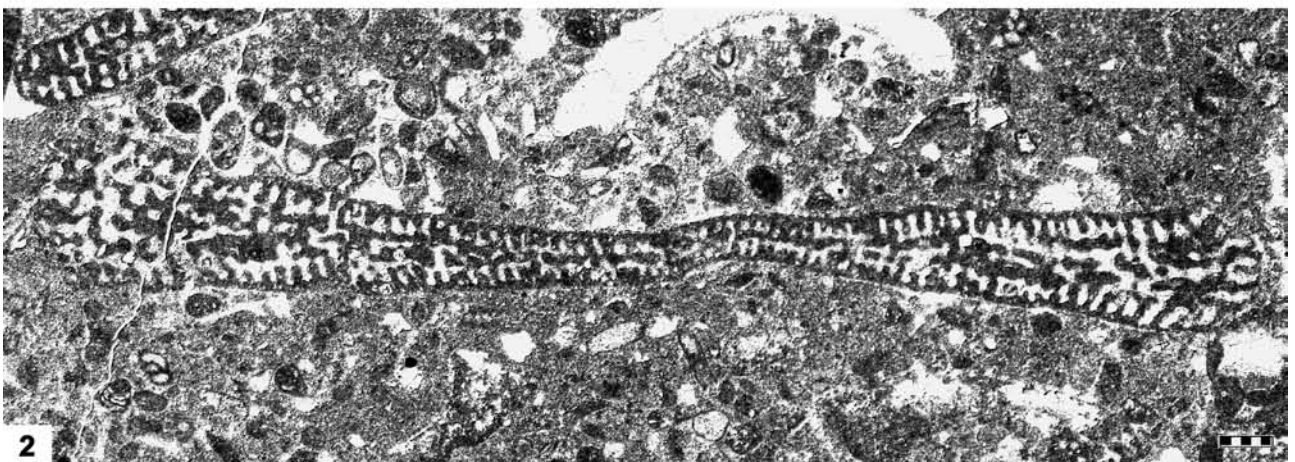
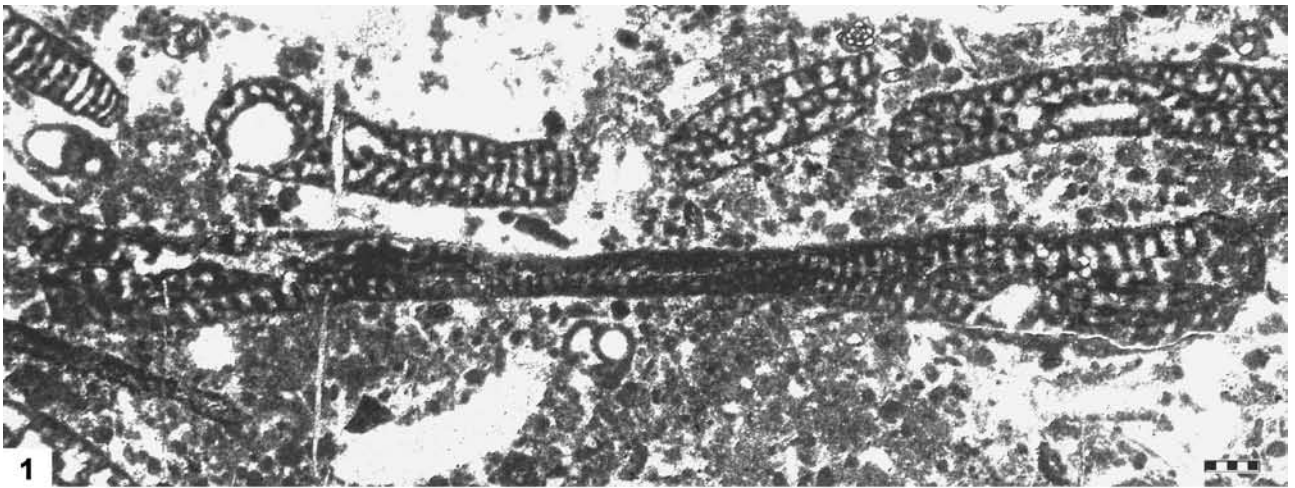


**PLATE III**

1–4 *Orbitopsella primaeva* (HENSON), Late Sinemurian–Early Pliensbachian; 1 – megalosphaeric and microsphaeric forms, 2–4 – microsphaeric forms; 1, 3–4: North Velebit Mt., 2: Central Velebit Mt., Croatia.

5–6 *Orbitopsella praecursor* (GÜMBEL), Pliensbachian; megalosphaeric forms, 5: Central Velebit Mt., 6: Plitvice, Croatia.

Scale bars – 0.2 mm.

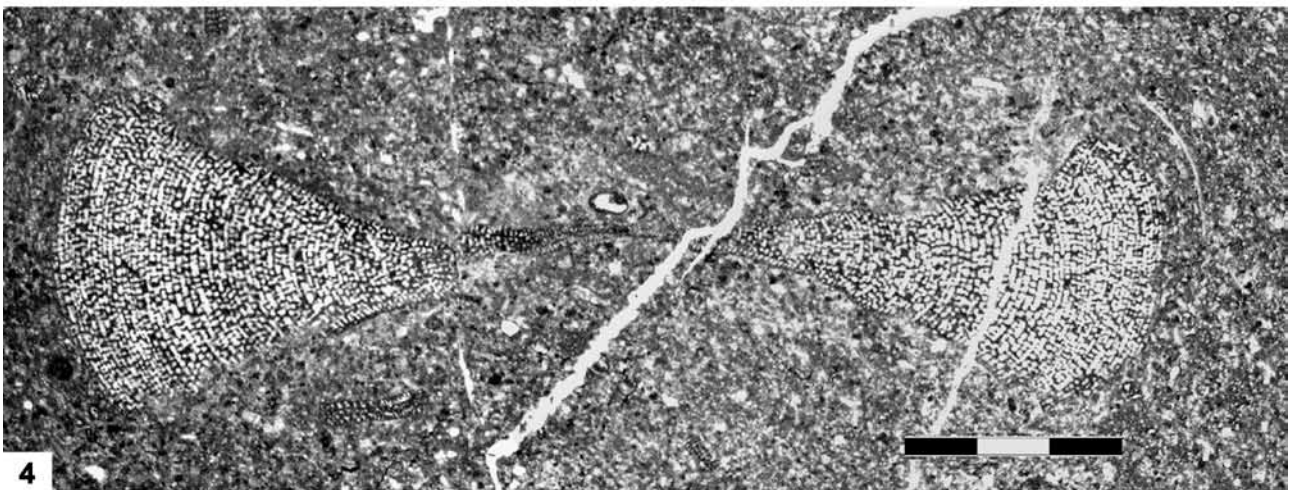
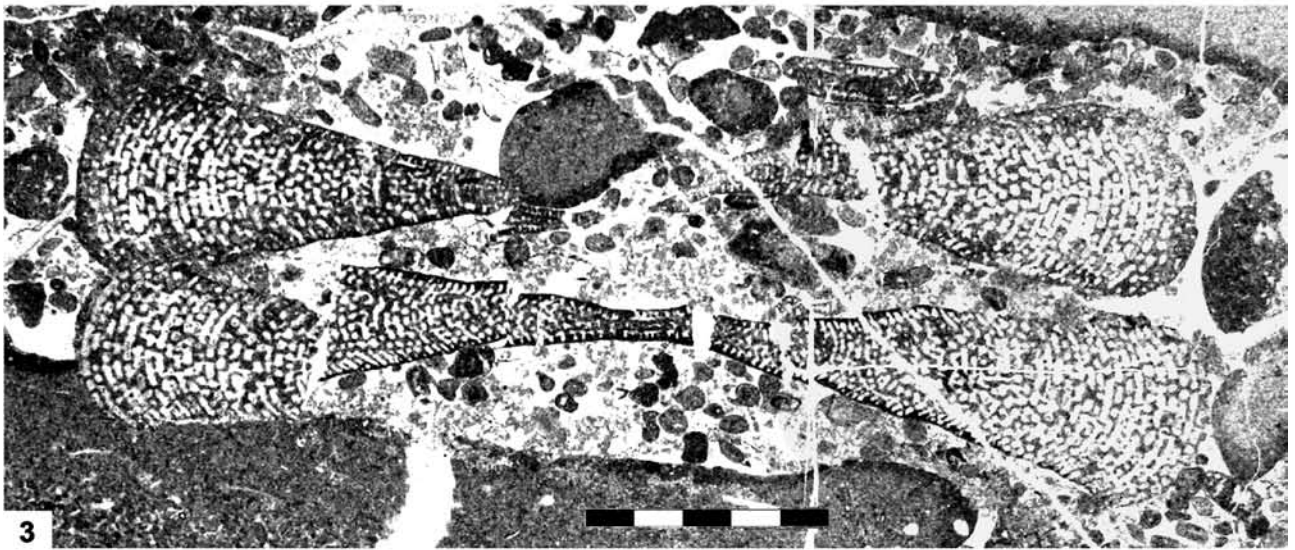
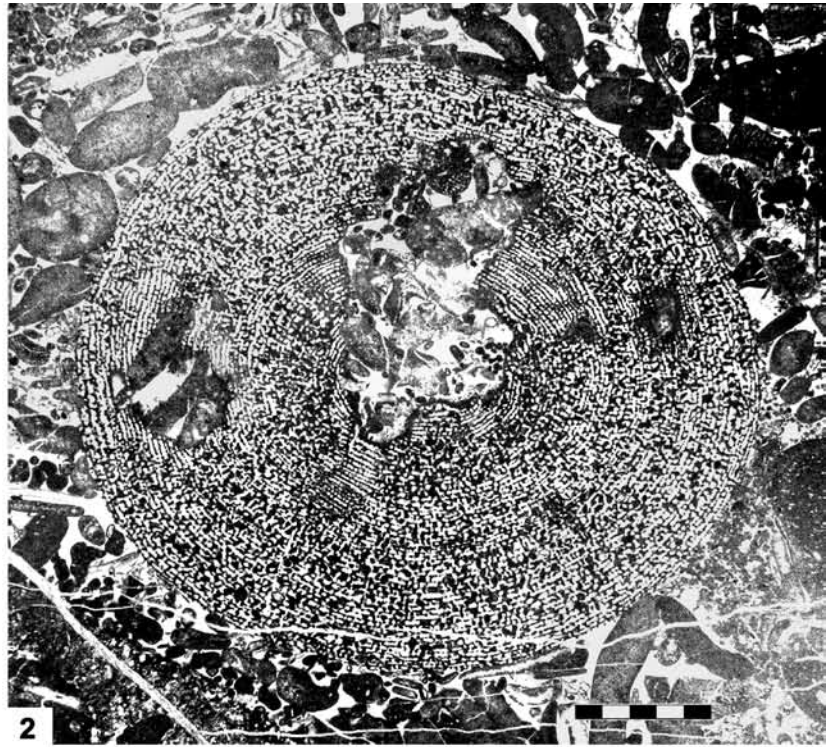


**PLATE IV**

1–4 *Orbitopsella praecursor* (GÜMBEL), Pliensbachian; 1 – megalosphaeric form, 2–4 – microsphaeric forms; 1: Plitvice, 2–4: Central Velebit Mt., Croatia.

Scale bars – 1: 0.2 mm, 2–3: 2 mm, 4: 3 mm.

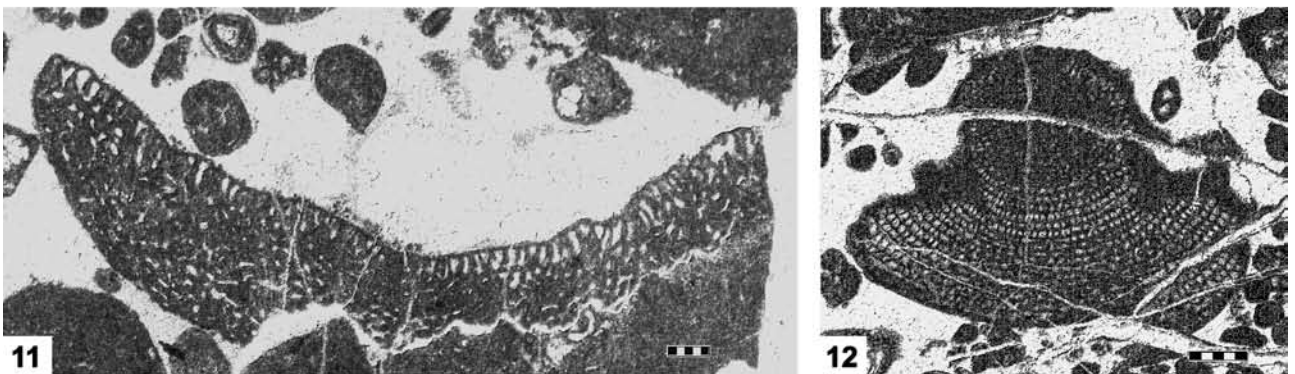
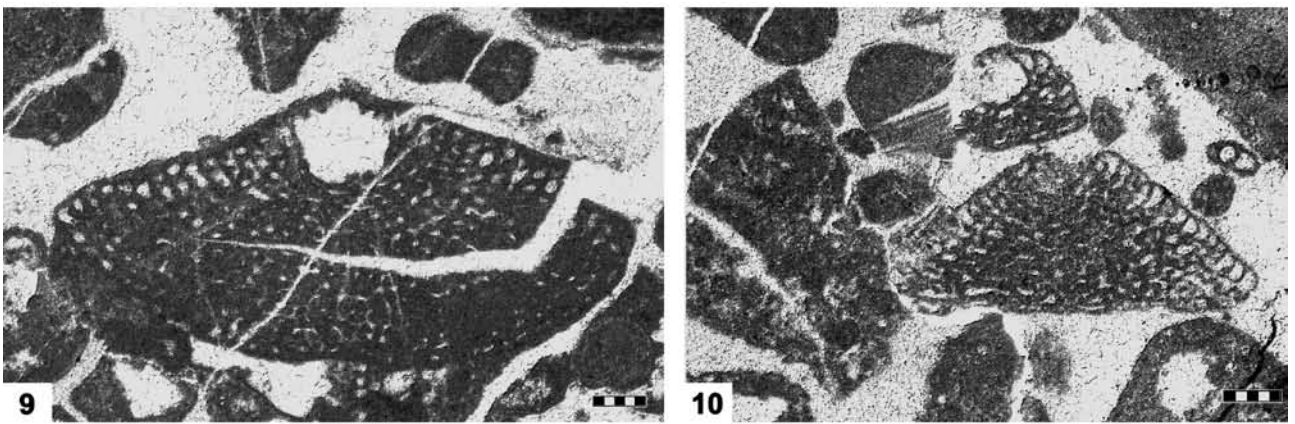
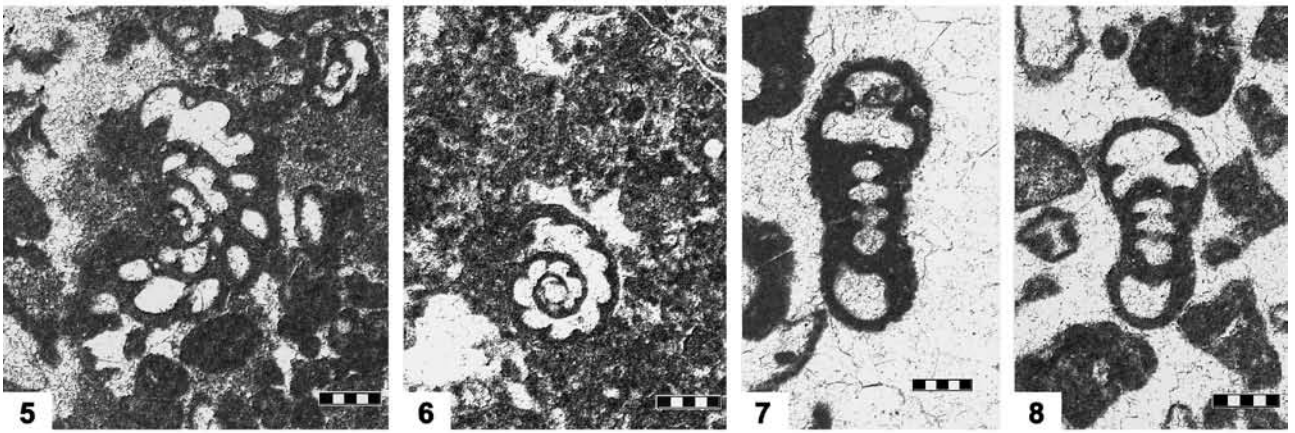
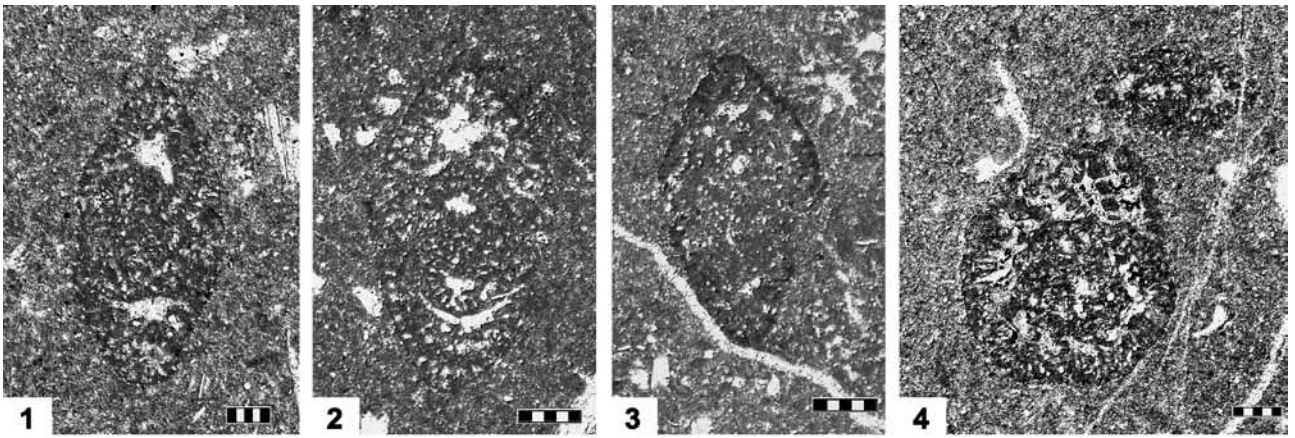




**PLATE V**

- 1–4 *Pseudocyclammina liassica* HOTTINGER, Late Pliensbachian, Velika Kapela Mt., Croatia.
- 5–8 *Mesoendothyra croatica* GUŠIĆ, Aalenian–Bajocian; 5 – South Velebit Mt., 6–7 – Biokovo Mt., 8 – Dubrovnik area, Croatia.
- 9–12 *Gutnicella cayeuxi* (LUCAS), Aalenian–Early Bajocian; 9–10 – megalosphaeric forms, 11–12 – microsphaeric forms: Dubrovnik area, Croatia.

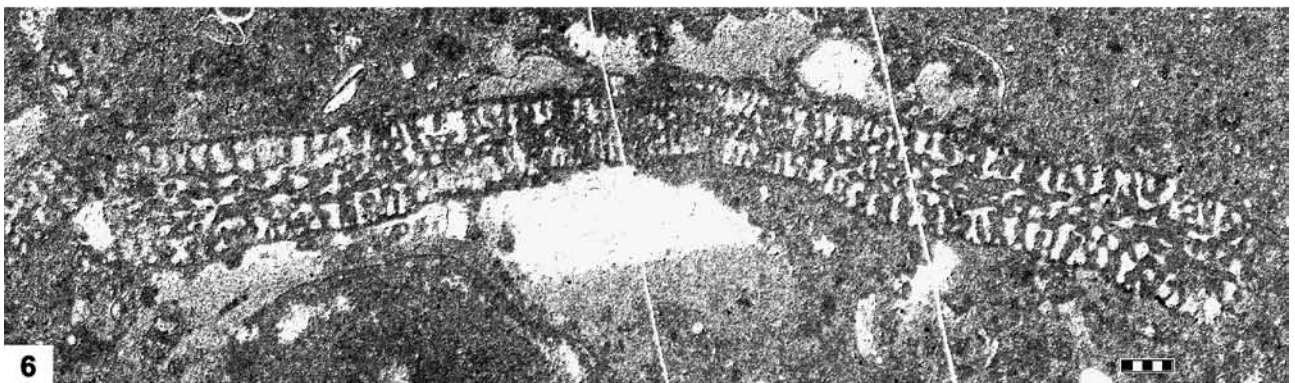
Scale bars – 1–11: 0.2 mm, 12: 0.5 mm.



**PLATE VI**

1–6 *Timidonella sarda* BASSOULLET, CHABRIER & FOURCADE, Aalenian–Early Bajocian; 1–5 – megasphaeric forms, 6 – microsphaeric form; 1: Dubrovnik area, 2–5: Biokovo Mt., Croatia, 6: Suha krajina, Slovenia.

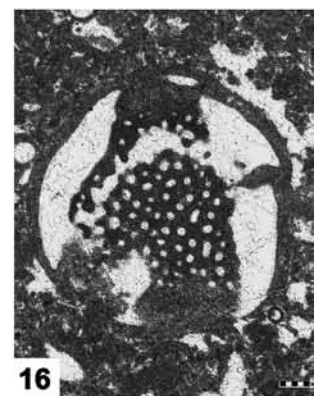
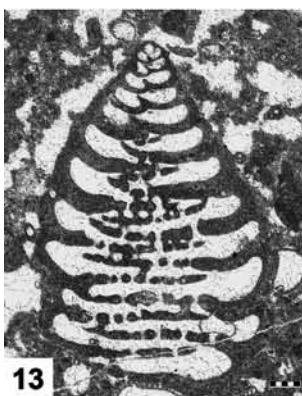
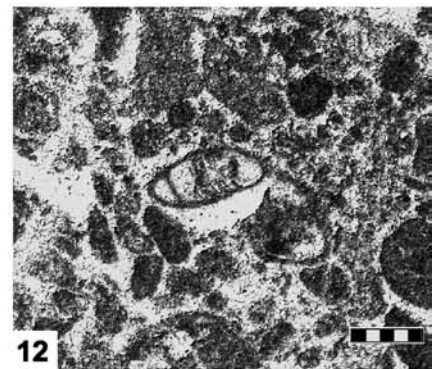
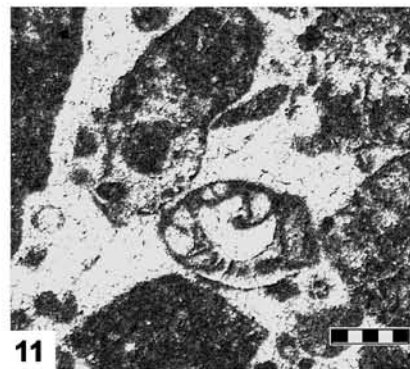
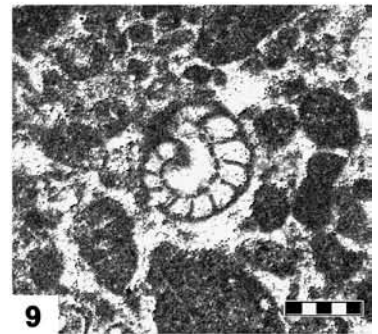
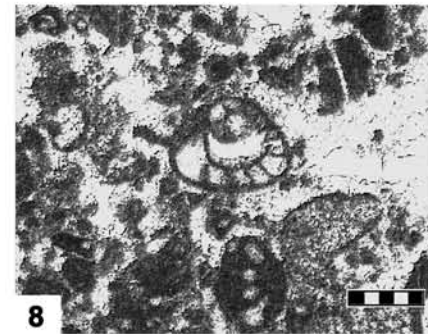
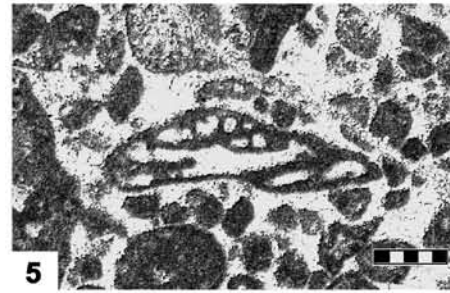
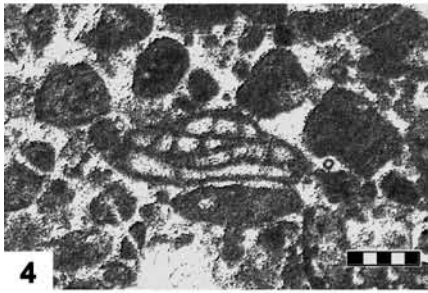
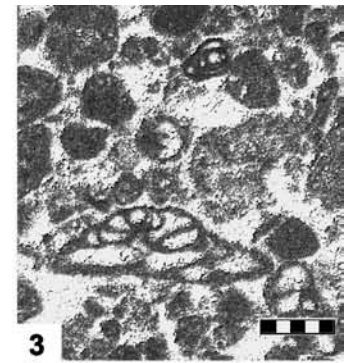
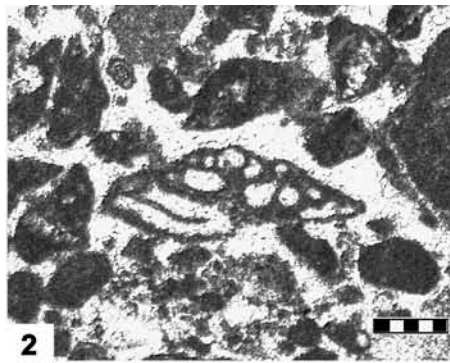
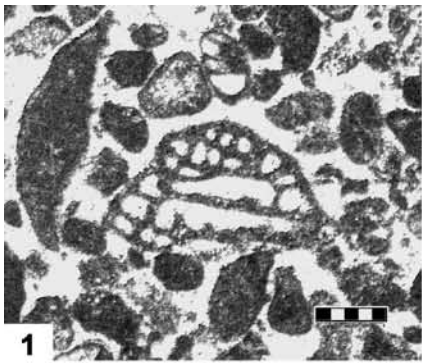
Scale bars – 0.2 mm.



**PLATE VII**

- 1–6     *Pseudodictyopsella jurassica* SEPTFONTAINE & DE MATOS, Early Bajocian, Biokovo Mt., Croatia.  
7–12    *Marzoella ficcarellii* CHIOCCHINI & MANCINELLI, Early Bajocian, Biokovo Mt., Croatia.  
13–16   *Paravalvulina complicata* SEPTFONTAINE, Late Bajocian, Biokovo Mt., Croatia.

Scale bars – 0.2 mm.

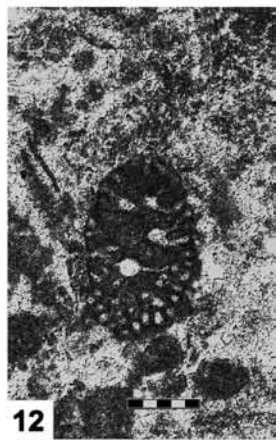
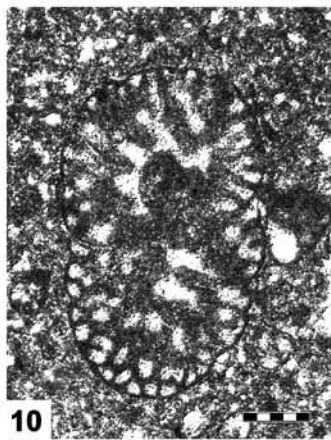
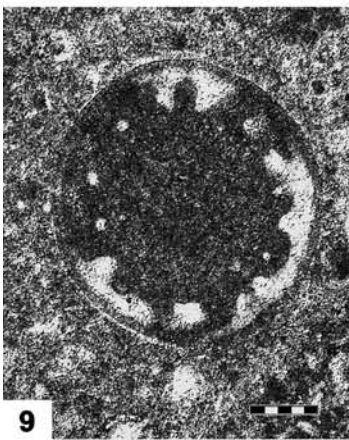
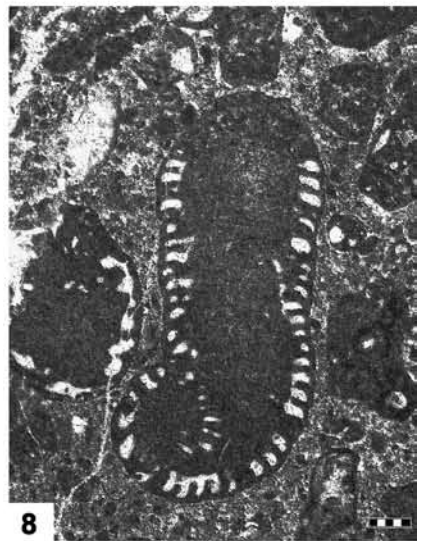
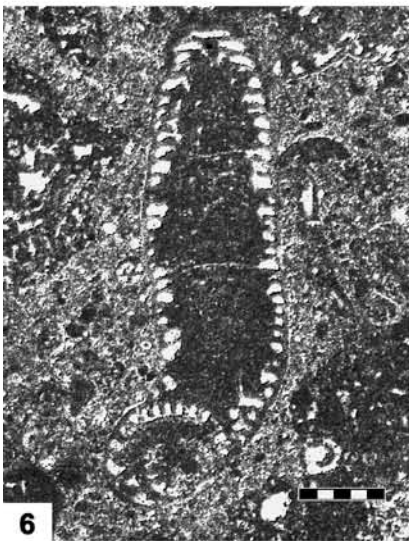
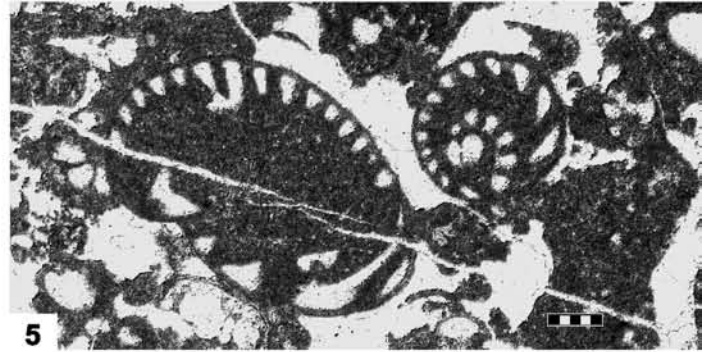
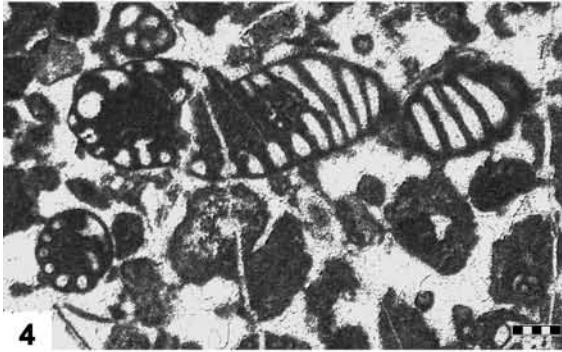
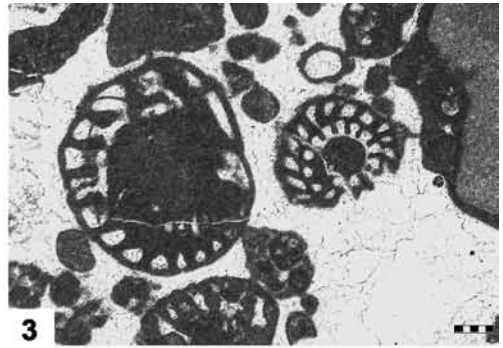
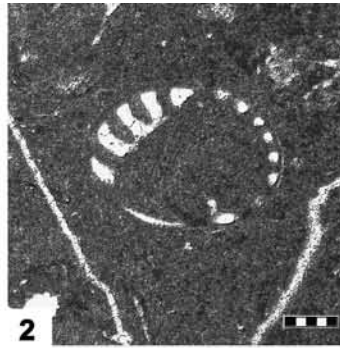
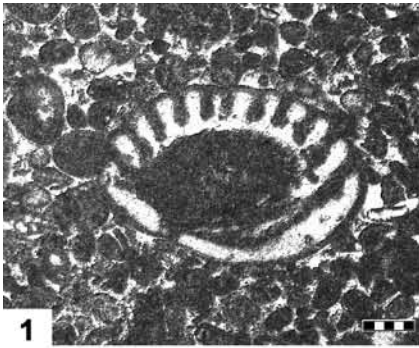


**PLATE VIII**

- 1–5 *Paleopfenderina salernitana* (SARTONI & CRESCENTI), Bathonian; 1–3, 5 – microsphaeric forms, 4–5 – megalosphaeric forms; 1: South Velebit Mt., 2: North Velebit Mt., 3–5: Biokovo Mt., Croatia
- 6–9 *Satorina apuliensis* FUORCADE & CHOROWICZ, Late Bathonian, 6–7, 9: Western Istria, 8: South Velebit Mt., Croatia.
- 10–12 *Kurnubia jurassica* (HENSON), Late Callovian–Oxfordian; 10, 12: Western Istria, 11: South Velebit Mt., Croatia.

Scale bars – 0.2 mm.

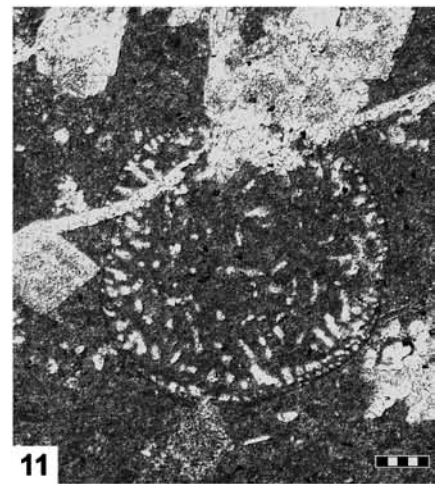
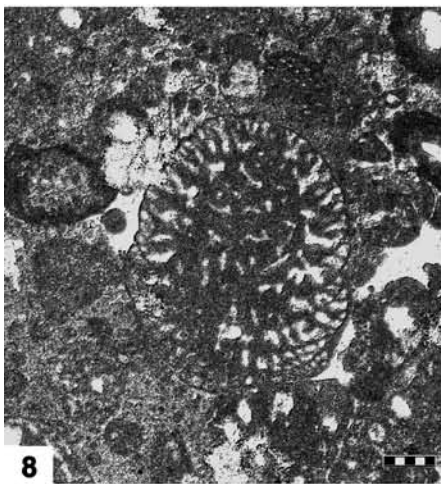
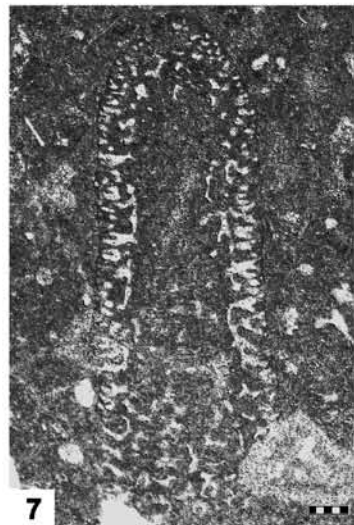
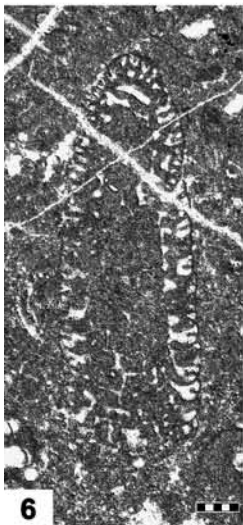
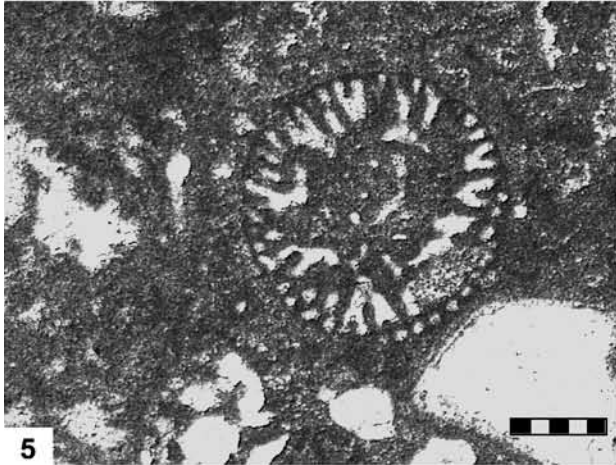
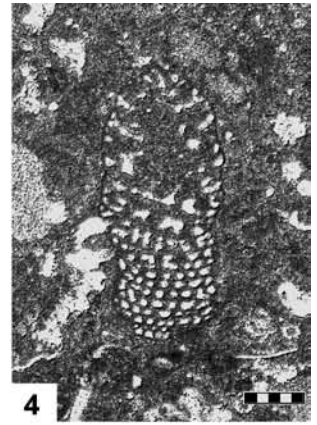
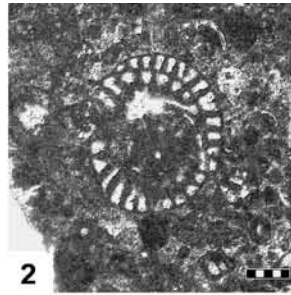
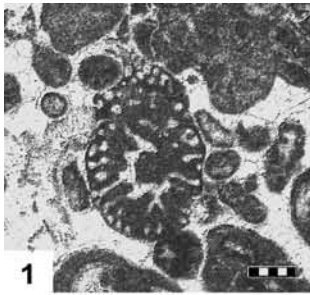




**PLATE IX**

- 1–2 *Kurnubia jurassica* (HENSON), Late Callovian–Oxfordian; 1: South Velebit Mt., 2: Gornje Jelenje, Croatia.
- 3–5 *Kurnubia palastiniensis* HENSON, Oxfordian–Kimmeridgian; 3–4: Velika Kapela Mt., 5: Biokovo Mt., Croatia.
- 6–8 *Kurnubia wellingsi* (HENSON), Late Oxfordian–Kimmeridgian; 6: South Velebit Mt., 7–8: Velika Kapela Mt., Croatia.
- 9–11 *Conicokurnubia orbitoliniformis* SEPTFONTAINE, Kimmeridgian; 9: South Velebit Mt., 10–11: Velika Kapela Mt., Croatia.

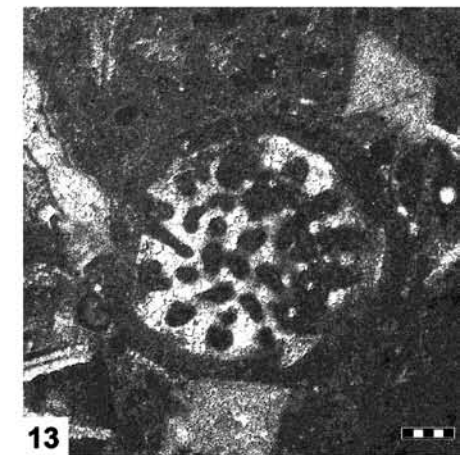
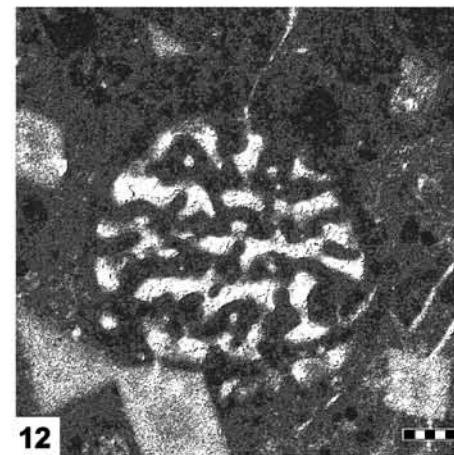
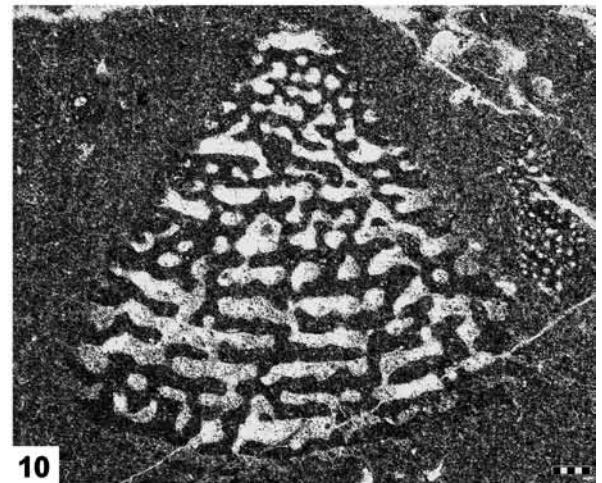
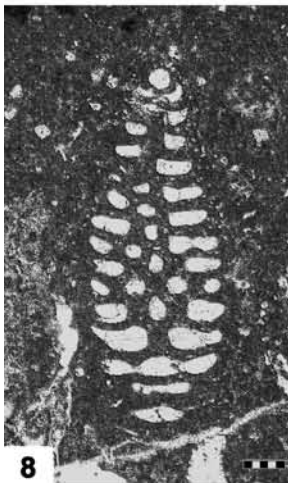
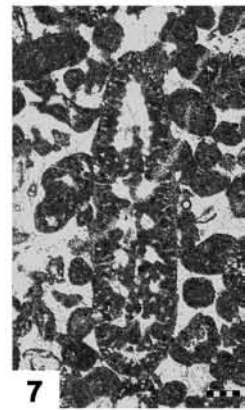
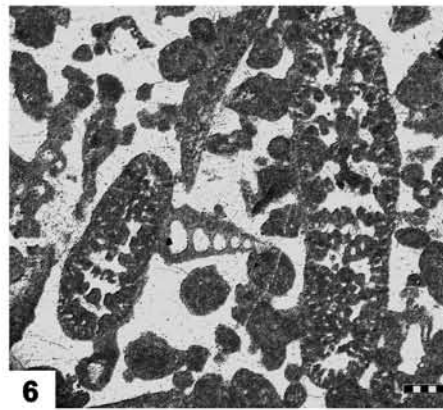
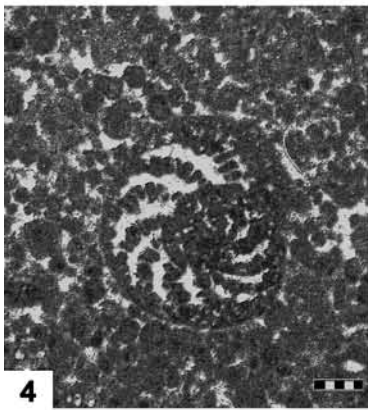
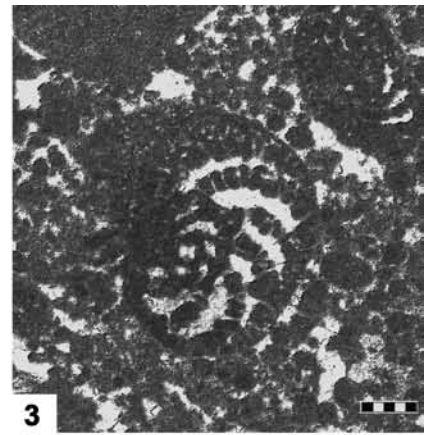
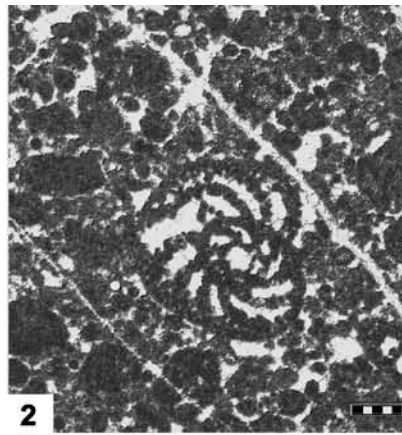
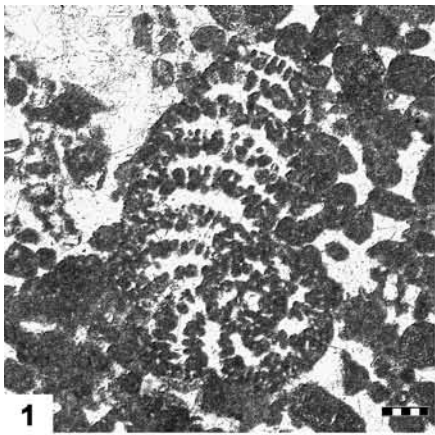
Scale bars – 1–8, 10–11: 0.2 mm, 9: 0.5 mm.



**PLATE X**

- 1–7 *Alveosepta jaccardi* (SCHRODT), Kimmeridgian, Velika Kapela Mt., Croatia.
- 8–13 *Parurgonina caelinensis* CUVILLIER, FOURY & PIGNATTI-MORANO, Late Kimmeridgian–Early Tithonian; 8: Velika Kapela Mt., 9–10: Dubrovnik area, 11–13: Gornje Jelenje, Croatia.

Scale bars – 1–9, 11–13: 0.2 mm, 10: 0.5 mm.

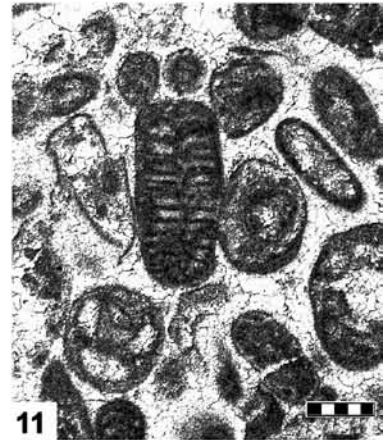
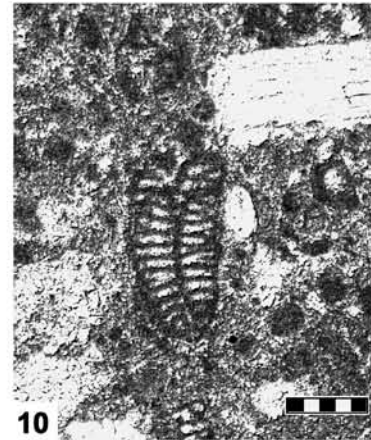
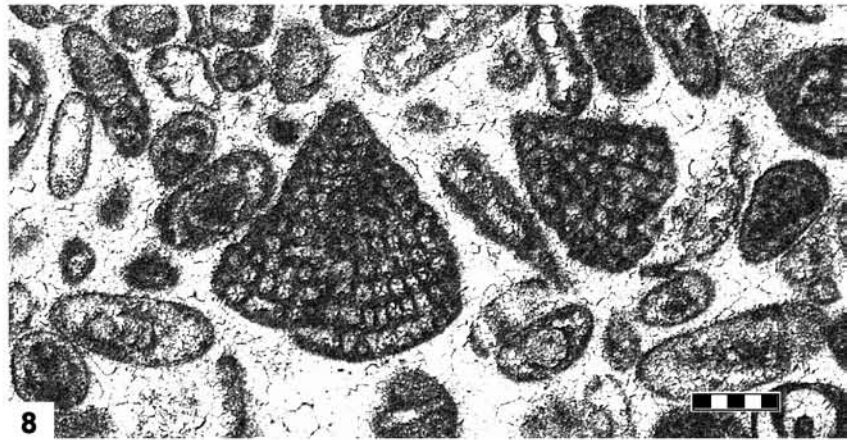
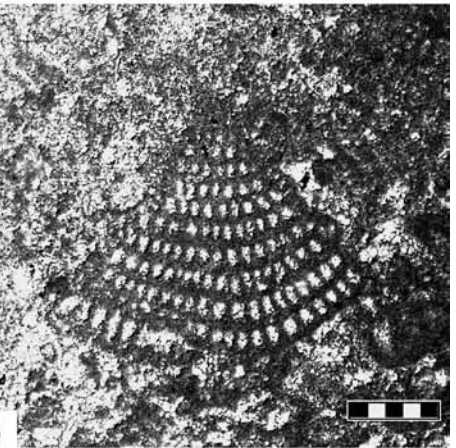
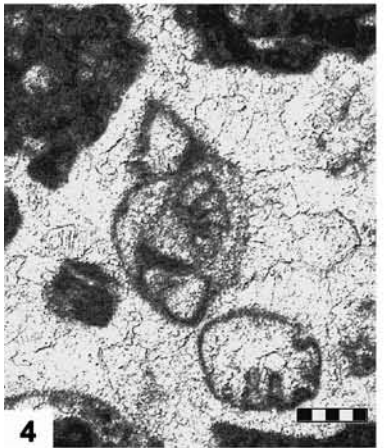
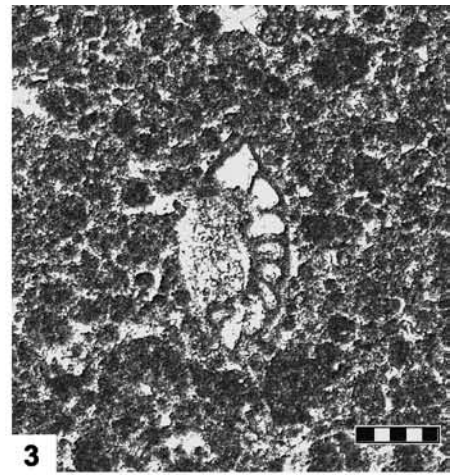
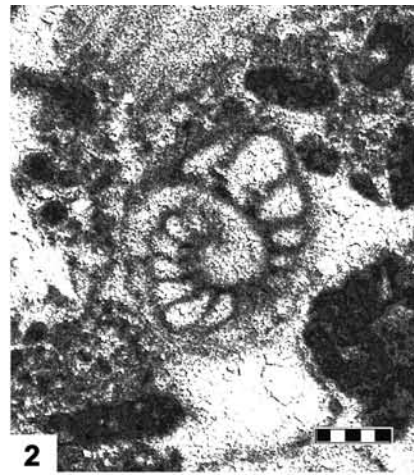
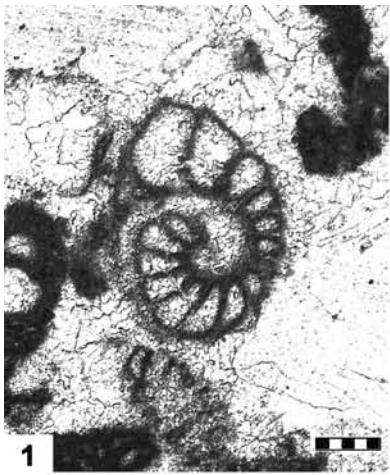


**PLATE XI**

1–5 *Protopenneroplis ultragranulata* (GORBATCHIK); 1–2, 4–5: Tithonian, Kupres, Bosnia and Herzegovina,  
3: Berriasian, Dubrovnik area, Croatia.

6–11 *Vercorsella camposaurii* (SARTONI & CRESCENTI), Valanginian, Western Istria, Croatia.

Scale bars – 0.2 mm.

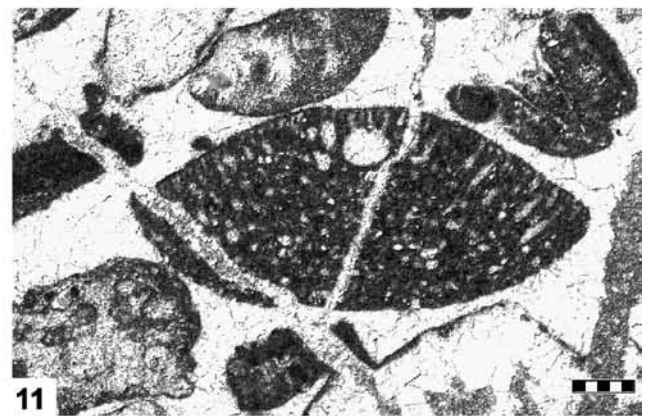
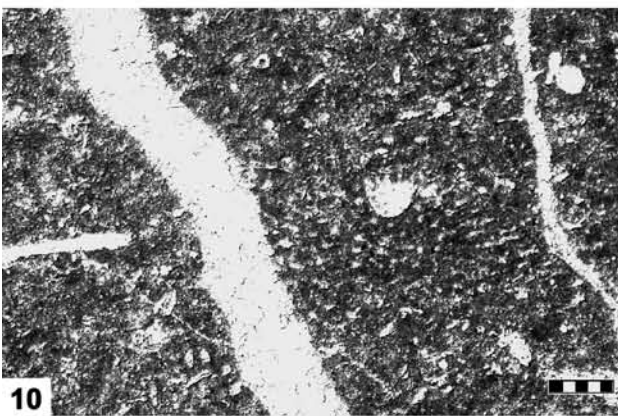
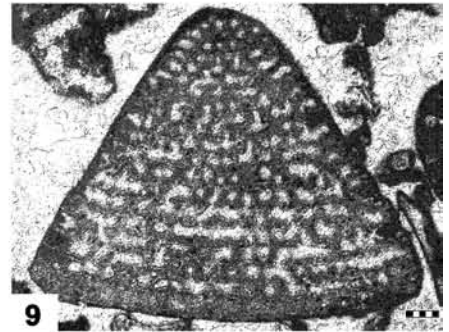
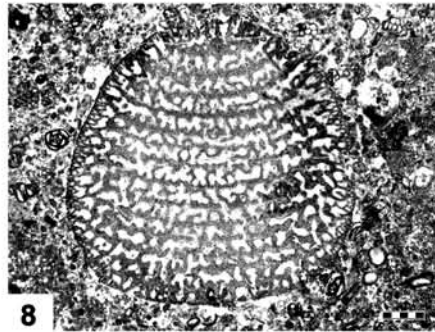
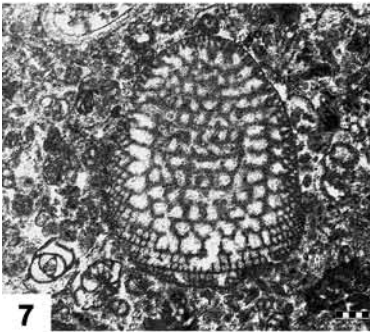
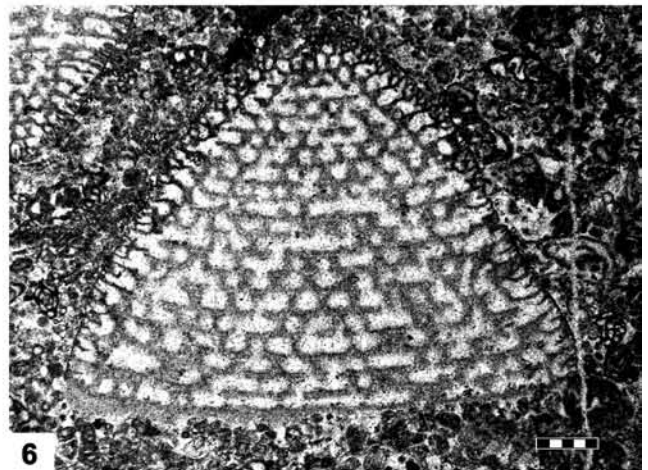
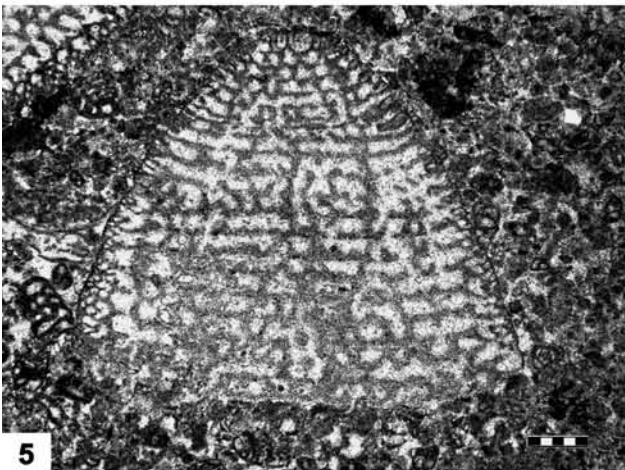
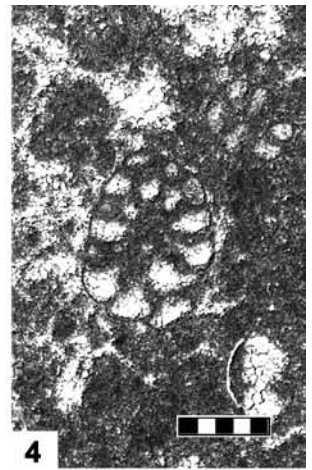
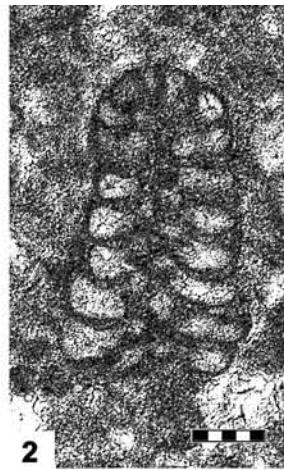
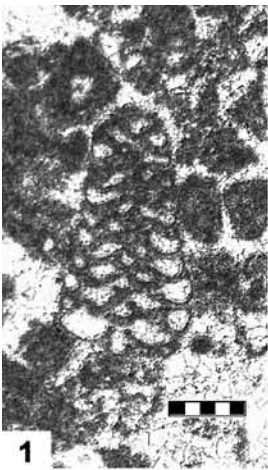


**PLATE XII**

- 1–4     *Campanellula capuensis* DE CASTRO, latest Hauterivian–earliest Barremian, Western Istria, Croatia.
- 5–9     *Rectodictyoconus giganteus* SCHROEDER, Late Barremian; 5–8: Banja Luka area, Bosnia and Herzegovina, 9: Jajce area, Bosnia and Herzegovina.
- 10–11   *Palorbitolina lenticularis* (BLUMENBACH), Late Barremian; 1: Ogulin area, Croatia, 2: Jajce area, Bosnia and Herzegovina.

Scale bars – 1, 4–7, 9–11: 0.2 mm, 2–3: 0.1 mm, 8: 0.5 mm.





**PLATE XIII**

- 1 *Palorbitolina lenticularis* (BLUMENBACH), Late Barremian, Dinara Mt., Croatia.
- 2–6 *Palorbitolina lenticularis* (BLUMENBACH), Early Aptian; 2, 4–5: Ogulin area, 3, 6: South Velebit Mt., Croatia.
- 7–10 *Praeorbitolina cormyi* SCHROEDER, Early Aptian, Ogulin area, Croatia.
- 11 Transitional form between *Praeorbitolina cormyi* SCHROEDER and *Praeorbitolina wienandsi* SCHROEDER, Early Aptian, Ogulin area, Croatia.
- 12 *Praeorbitolina wienandsi* SCHROEDER, Early Aptian, Ogulin area, Croatia.

Scale bars – 1–4, 6–12: 0.2 mm, 5: 0.1 mm.