

RESEARCH ARTICLE

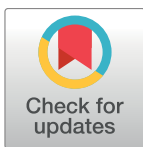
Improving the Design of a Conservation Reserve for a Critically Endangered Species

Chris Taylor¹, Natasha Cadenhead², David B. Lindenmayer³*, Brendan A. Wintle²

1 Melbourne Sustainable Society Institute, University of Melbourne, Parkville, Victoria, Australia, **2** School of Biosciences, University of Melbourne, Parkville, Victoria, Australia, **3** Fenner School of Environment and Society, The Australian National University, Canberra, Australian Capital Territory, Australia

✉ These authors contributed equally to this work.

* david.lindenmayer@anu.edu.au



Abstract

Setting aside protected areas is a key strategy for tackling biodiversity loss. Reserve effectiveness depends on the extent to which protected areas capture both *known* occurrences and areas *likely* to support the species. We assessed the effectiveness of the existing reserve network for Leadbeater's Possum (*Gymnobelideus leadbeateri*) and other forest-dependent species, and compared the existing reserve system to a set of plausible reserve expansion options based on area targets implied in a recent Population Viability Analysis (PVA). The existing Leadbeater's Reserve and surrounding reserve system captured 7.6% and 29.6% of cumulative habitat suitability, respectively, across the landscape. Expanded reserve scenarios captured 34% to 62% of cumulative habitat suitability. We found acute trade-offs between conserving Leadbeater's Possum habitat and conserving habitat of other forest-dependent species. Our analysis provides a template for systematically expanding and evaluating reserve expansion options in terms of trade-offs between priority species' needs.

OPEN ACCESS

Citation: Taylor C, Cadenhead N, Lindenmayer DB, Wintle BA (2017) Improving the Design of a Conservation Reserve for a Critically Endangered Species. PLoS ONE 12(1): e0169629. doi:10.1371/journal.pone.0169629

Editor: Danilo Russo, Università degli Studi di Napoli Federico II, ITALY

Received: November 10, 2016

Accepted: December 20, 2016

Published: January 25, 2017

Copyright: © 2017 Taylor et al. This is an open access article distributed under the terms of the [Creative Commons Attribution License](https://creativecommons.org/licenses/by/4.0/), which permits unrestricted use, distribution, and reproduction in any medium, provided the original author and source are credited.

Data Availability Statement: Description and source of datasets used: Relative Age; This data is available from <https://www.data.vic.gov.au/data/dataset/relative-age>. Accessed 1 March 2016. The Statewide Forest Resource Inventory (SFRI) is a program of information collection and analysis of Victoria's native forests that supports statewide planning and management. One SFRI product is SFRImap Database - a database of information on the eucalypt composition, structure and history of Victoria's forests. SFRImap Database covers most of Victoria's forests on public land at a scale of 1:25,000. Relative Age is a layer derived from

Introduction

A key strategy for tackling biodiversity loss is to set aside protected areas [1,2]. Conservation reserves are an essential part of any comprehensive biodiversity conservation strategy [3,4]. Worboys et al. [1] and Rodrigues and Brooks [5] contend that approximately 25% of the world's bird biota has been saved from extinction due to conservation reserves. Species distribution models and spatial prioritization algorithms have been key tools in identifying areas in need of protection and in reserve design itself (e.g. [6,7]). Species distribution modelling methods, such as Maxent [8], can be used to identify the extent to which protected areas capture species' distributions, highlighting gaps in representation [9]. Spatial prioritization software, such as Zonation [10] and Marxan [11], can guide the design of protected areas when complicated trade-offs between species, or between human interests and biodiversity, exist [12]. However, very few studies have explored the adequacy of a reserve system for avoiding extinction of a particular species, despite the expansive literature on conservation reserve design [6,13,14].

SFRIMap. It is SFRIMap dissolved on the RELAGE attribute. Derived layers from SFRIMap Database are complimented with the same metadata as the SFRIMap layer. Native Vegetation - Modelled Extent 2005; This data is available from <https://www.data.vic.gov.au/data/dataset/native-vegetation-modelled-extent-2005>. Accessed 1 March 2016. Modelled dataset of Native Vegetation and major water-based habitats, created by the Arthur Rylah Institute, and completed 15 July 2007. NV2005_EXTENT has been created from time-series (between 1989 and 2005) Landsat Imagery, many thousands of ground-truthing points, other relevant spatial data and expert validation. The dataset is a good interpretation of native vegetation extent (including aquatic habitat), but must be used with care, given its modelled nature. The dataset categorises the landscape into eight categories ranging from 'highly likely native vegetation' through to 'unlikely to support native vegetation'. Forest Management Areas; This data is available from <https://www.data.vic.gov.au/data/dataset/forest-management-areas>. Accessed 1 March 2016. FMA500 is the key layer for statewide overview of departmental forest management activities. It derived from the FMA regions of FORMB100 with generalised linework to 500 metres. Fire history overlay of most recent fires; This data is available from <https://www.data.vic.gov.au/data/dataset/fire-history-overlay-of-most-recent-fires>. Accessed 1 March 2016. This layer has been derived from FIRE_HISTORY data and represents the spatial extent of the last fires recorded, primarily on public land. The layer stores details of the last time an area was known to be burnt by wildfire or prescribed burning and represents a consecutive overlay of all FIRE_HISTORY layers, from older fire seasons to the most recent fire seasons. This data set is current to 2011/12 fire season. Victorian Biodiversity Atlas; This data is available from <https://vba.dse.vic.gov.au/vba/#/>. Accessed 1 March 2016. ANUCLIM; This is available from <http://fennerschool.anu.edu.au/research/products/anuclim-vrsn-61>. Additional input data for MaxEnt Models; Data from Williams et al. 2012 are available at <http://spatial.ala.org.au/layers>. Metadata for 2 of the environmental variables, distance to water and relief, from A. Moran-Ordóñez (Moran-Ordóñez et al. in prep.) are available from the figshare repository (input for number of dry days, 5th & 95 percentile of temperatures): T5: 5th percentile of minimum temperatures: <https://dx.doi.org/10.4225/49/587ef3a403d49>, T95: 95th percentile of maximum temperatures: <https://dx.doi.org/10.4225/49/587ef3f0139da>, Dry runs: longest number of

Leadbeater's Possum (*Gymnobelideus leadbeateri*) is listed as critically endangered under Australia's Environment Protection and Biodiversity Conservation Act (*EPBC Act 1999*). The species has a highly restricted distribution, largely confined to montane ash forests within the Central Highlands region and habitat requirements consisting of old growth and mixed-age forest with hollow-bearing trees [15]. Persistence of remaining populations is threatened by logging and wildfires [16–18]. Special protection zones within forests broadly designated for timber and paper production were established to conserve the species [19]. However, significant habitat loss resulted from the 2009 'Black Saturday' wildfire that burnt approximately 42% of the forest thought to be suitable habitat for Leadbeater's Possum [20], leaving the species at greater risk of extinction. Repeated field surveys have found the species not occupying areas damaged in that fire, irrespective of the fire severity [17]. Large, old, hollow-bearing trees, on which the species is critically dependent, are also declining rapidly throughout its range [21,22].

A recent Population Viability Analysis (PVA) assessed the long-term viability of populations of Leadbeater's Possum and suggested that the existing reserve system needed to be significantly expanded [18]. However, the study did not make spatially explicit recommendations about *where* reserve expansion should occur. The effectiveness of the reserve system in conserving Leadbeater's Possum will depend on the extent to which the reserve area effectively captures both *known* occurrence sites and areas *likely* to support the species, now or in the future.

In this study, we assessed the effectiveness of the existing reserve network for conserving known and likely occurrences of Leadbeater's Possum and compared the current reserve to a set of plausible reserve expansion options. Because there is significant interest in the degree to which the reserve system caters for other forest-dependent species, we included Greater Glider (*Petauroides volans*), Yellow-bellied Glider (*Petaurus australis*), and Sooty Owl (*Tyto tenebri-cosa*), which vary markedly in life-history attributes, body size, diet and home range [23]. Although it is relatively abundant throughout its range, Greater Glider is a mostly solitary arboreal marsupial and widely considered to be sensitive to the impacts of forest fragmentation and disturbance [24,25]. The Sooty Owl has a large home range and it occupies hollows in large, old trees [26] that are consequently susceptible to disturbances [27]. The Yellow-bellied Glider has the largest home range of any species of arboreal marsupial in the study area [28]. We analysed how well each species would be represented in reserves arising from single- and multi-species focussed reserve design strategies.

We explicitly analysed the trade-off between obtaining the best possible outcome for a single species, in this case Leadbeater's Possum, versus achieving an outcome that brings the best balance of habitat provision for multiple species, in this case all four forest-dependent species. The end result was a transparent analysis of where in the landscape reserve expansion should take place for the long-term persistence of Leadbeater's Possum and how much this will contribute to the conservation of other high-profile forest-dependent species. By integrating the result of a population viability analysis [18] with a spatial prioritization approach, we are able to assess both the adequacy and representativeness of existing and proposed reserve design options; something that is rarely attempted in conservation planning [29].

Methods

Study area

Our study region was the Central Highlands of Victoria, located north east of the city of Melbourne in the Australian state of Victoria (37° 14' S 144° 59' E, 38° 5' S 146° 27' E). It includes the Central Highlands Regional Forest Agreement (RFA) area [21], which is approximately

consecutive dry days: <https://dx.doi.org/10.4225/49/587ef4154f118>.

Funding: NC and BW were support by ARC Future Fellowship FT100100819. DBL was supported by ARC Laureate Fellowship FL120100108. The funders had no role in study design, data collection and analysis, decision to publish, or preparation of the manuscript.

Competing Interests: The authors have declared that no competing interests exist.

1,100,000 hectares. It comprises 35% is state forest, 16% formal reserves, 4% other public land with the remainder private land [30]. Various kinds of forest covers approximately 64% of the total area of the RFA region [31], including much of mainland Australia’s Mountain Ash forest [32]. These forests provide habitat for a number of threatened and endemic species, but have also been a major source of pulpwood and sawlogs for various industries since the 1930s [33].

Wildfire is the main form of natural disturbance in forests across this area [20]. The impacts of fire are variable, ranging from complete stand replacement after severe fires, to instances where the previous stand survives into the new stand [34,35]. Extensive salvage logging following the 1939, 1983 and the 2009 fires resulted in sizable areas of even-aged stands [36].

The existing reserve network in the Central Highlands RFA was established over several decades, beginning in 1928 [30]. The current Leadbeater’s Possum Reserve (30,500 ha) was established in 2008, consists of both National Park and State Forest, and is dispersed across the region in small units ranging from 12 ha to 3353 ha [37] (Fig 1).

Species distribution modelling using MAXENT

Species occurrence data (i.e. presence-only records) for our four target species were sourced from the Victorian Biodiversity Atlas [38]. We used only those records with better than 1km location precision and we removed records at sites where the presence was recorded prior to a

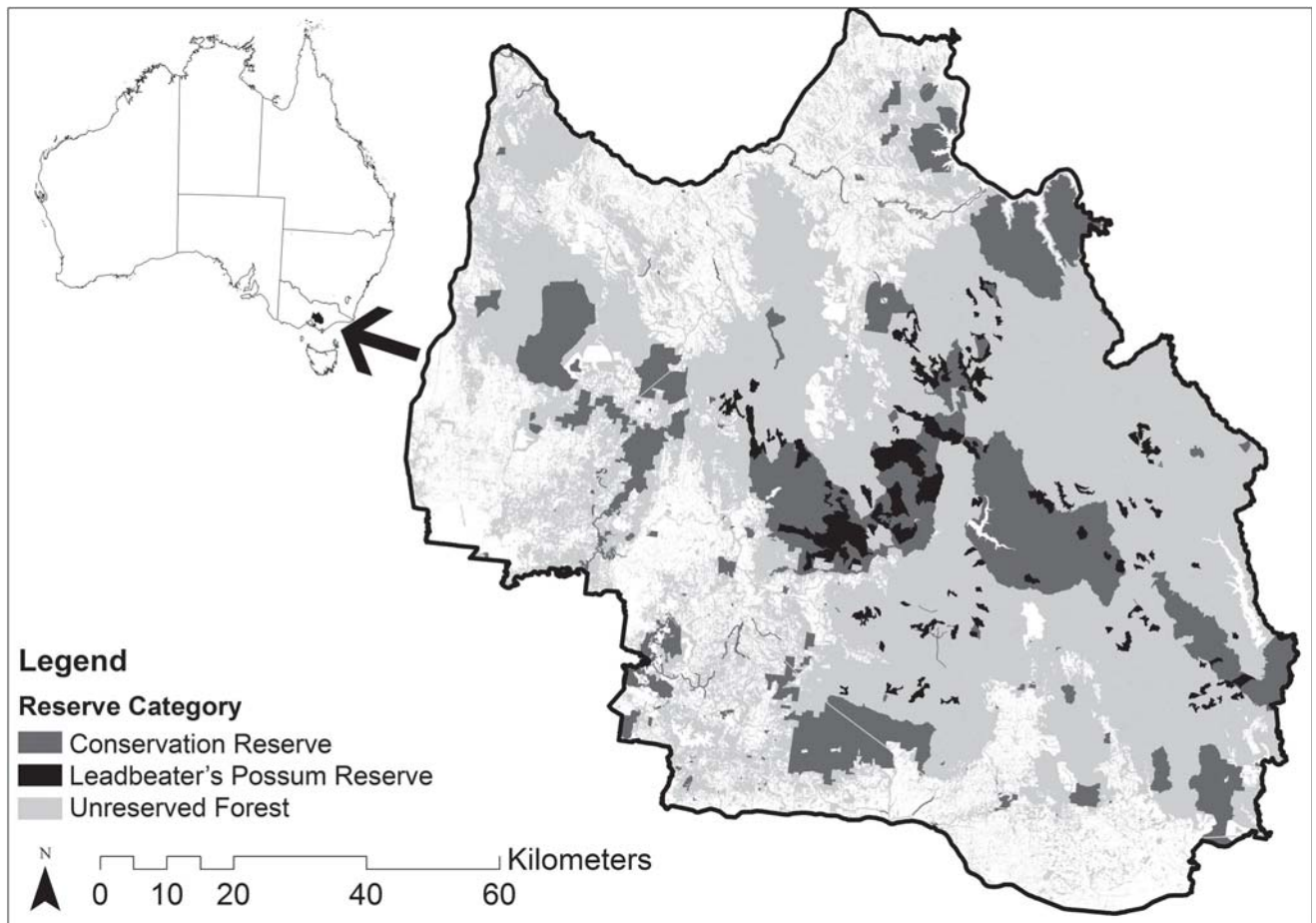


Fig 1. The existing conservation reserve network and the Leadbeater’s Possum Reserve in the study area (Source: [30,37]).

doi:10.1371/journal.pone.0169629.g001

fire at that site, since none of our species have been observed at burnt sites post-fire [17]. A suite of biologically-relevant environmental predictors were assembled for each species, which included information on forest type, ecological vegetation class (EVC), disturbance history (logging and fire), regeneration year, forest condition and ranking, where 0 indicated areas that contained no hollow bearing trees, 1 indicated areas with dead hollow bearing trees within regenerating forest, and 2 corresponded to areas with live and dead hollow bearing trees. Bioclimatic data consisted of relevant downscaled ANUCLIM layers [39], as well as layers describing the number of consecutive dry days (<1mm rainfall), elevation relief, 5th percentile of minimum temperature, 95th percentile of maximum temperature and topographic information, such as elevation relief and distance to water bodies [40]. Using the presence-only modelling software Maxent [8] (ver. 3.3.3k), we modelled statistical relationships between environmental predictors and the occurrence records of each species.

Accounting for sampling bias in the spatial distribution of records is particularly important in methods that employ presence-only data [41]. We used a target background sampling approach to account for this kind of bias [41,42], using presence records of Leadbeater's Possum, Greater Glider, Yellow-bellied Glider, Sooty Owl and public data on other local owl species (see Tables A–E in S1 File).

We constructed models for each of the four target species using the full set of environmental variables. We then modified the models using only those variables which contributed >1% of the explanatory power of the model [40], based on the jack-knifed contributions of each variable. Models were assessed using the area under the receiver operating characteristic curve (AUC) [43] and the AUC_{diff} [44]. AUC is a commonly used measure of predictive performance in presence-only modelling [8] and describes a model's ability to discriminate between presences and, in this case, background points. For example, if a presence and a background point are drawn at random from the data, the AUC can be interpreted as the probability that the model will have predicted a higher habitat suitability value for the presence location than the background. AUC_{diff} describes the minimum difference between the AUC of the training dataset and that of the test dataset. It gives an indication of whether the model is highly over-fitted. For further information on model settings, see Appendix in S1 File and Table A in S1 File. We converted models into maps of relative likelihood of occurrence for each species across the forested areas in the study region for subsequent use in the spatial prioritization process.

Spatial prioritization

We used the program Zonation [10,45] (ver. 4.0) to identify priority areas across all forested land within the Central Highlands RFA area. Zonation produces a hierarchical ranking of values over the landscape using a series of algorithms. We used its 'core area' algorithm to allocate a conservation value to each cell across the landscape based on: (1) the relative suitability of a cell for each species; (2) the weights assigned to species (see below); and (3) the proportion of the remaining habitat for each species that the cell represents. In this way, Zonation ranked each cell in the landscape according to how 'irreplaceable' (*sensu* [46]) it was for achieving representation of suitable habitat for each species. Areas that contained habitat for rarer species tended to be ranked as highly irreplaceable, because habitat for those species is available in few or no other sites in the landscape.

The existing reserve system was used in our analyses in two ways. First, the current Leadbeater's Possum Reserve was included as the top percentage of ranked cells, allowing us to ascertain where the reserve should be expanded to best complement the existing system and to most efficiently protect Leadbeater's Possum and the habitat of other forest-dependent species. Second, the existing reserve system was ignored (i.e. the habitat was ranked however the

Table 1. Three weighting schemes for IUCN Red List categories used in this study.

IUCN Red List Category	Species	Equal Weights	Linear Weights	Log Weights
Critically Endangered	Leadbeater's Possum	1	4	0.5
Endangered	-	1	3	0.05
Vulnerable	Greater Glider, Sooty Owl	1	2	0.005
Near Threatened	Yellow-bellied Glider	1	1	0.0005

doi:10.1371/journal.pone.0169629.t001

algorithm determined best) allowing us to quantify how efficient the reserve was in protecting Leadbeater's Possum and other forest-dependent species by comparing it to an 'optimal' reserve designed on the basis of their Species Distribution Model (SDM) predictions.

Species weights

Zonation allows species to be weighted differently, altering the way in which the cells in the landscape are prioritized. The four species were allocated weights in relation to their conservation status according to the IUCN Red List [47] and the Victorian *Flora and Fauna Guarantee Act 1988*. Because there is no best way to weight features, we compared three numerical species weighting scenarios: (1) equal weights (the Zonation default), (2) linear weights, and (3) log weights (Table 1) [48].

Leadbeater's Possum, Greater Glider and Yellow-bellied Glider are all listed under the IUCN Red List. The Sooty Owl is not currently listed as threatened under the IUCN Red List, but it is listed as 'threatened' under the *Flora and Fauna Guarantee Act 1988* [49]. The SDMs for each species were smoothed using a 2D kernel smoothing function based on the species' home range size. This accounted for the importance of connectivity in a landscape and penalized highly fragmented areas, as all our species have been identified as vulnerable to habitat fragmentation in the study area [50–53].

Reserve scenarios

We modelled two reserve scenarios based on the recommendations of the PVA by Todd *et al.* (2016). The reserve scenarios were based on the protected area required to achieve a less than 5% chance of the Leadbeater's Possum population falling to (or below) 500 or fewer adult females in 40 generations. The PVA demonstrated that the smallest assessed threats of a 12.5% habitat decline of hollow-bearing trees and 12.5% habitat burnt in a future fire in 2020 required more than a doubling of the current Leadbeater's Possum reserve to 67,473 ha (Todd *et al.*, 2016). This provided the basis for reserve scenario 1 modelled in this study. The largest threat modelled by Todd *et al.* (2016) was a 50% habitat decline of hollow-bearing trees and 50% habitat burnt in a future fire in 2020, which required the Leadbeater's Possum reserve to be expanded to 171,345 ha. This provided the basis for reserve scenario 2 modelled in this study (Table 2).

Table 2. The area of Leadbeater's Possum Habitat required for a <5% chance of population decline below 500 females under varying scenarios of habitat decline and future fire impact in the Central Highlands over the next 200 years [18]. The 'habitat decline' and 'future fire' percentage changes indicate possible risks of impact, based on the smallest to largest of threats.

Scenario	PVA Description	Area required (ha)
Existing	Permanent Leadbeater's Possum Reserve	30,500
Scenario 1	Historical fire + 12.5% habitat decline + 12.5% future fire	67,473
Scenario 2	Historical fire + 50% habitat decline + 50% future fire	171,345

doi:10.1371/journal.pone.0169629.t002

The performance of reserve scenarios was assessed against the existing reserve system by calculating the cumulative habitat suitability value of each species' distribution layer within the reserve boundaries. The results are expressed as a percentage of the total cumulative value for the region for each target species. The existing Leadbeater's Possum reserve and formal reserve system are assessed as the baseline. This provides a metric to determine whether the reserves are effective in capturing the areas with the highest habitat suitability values, for example, because reserves containing cells with higher values will not need to be as large as those reserves containing cells of lower values to achieve the same net cumulative value. The scenarios and their respective weights were compared against each other to determine the most efficient trade-offs between the species. For example, will additional protection for the Leadbeater's Possum result in a larger or smaller negative loss for another target species as different areas are prioritised for their respective scenarios and weights?

Results

Species distribution models

The Maxent models for the four target species performed moderately well in terms of predictive accuracy, with cross-validated AUC values for the Leadbeater's Possum, Yellow-bellied Glider and Sooty Owl being above 0.7 (see Tables B, D and E in [S1 File](#)). However, the Greater Glider performed less well, with an AUC value of 0.63 ± 0.03 (see Table C in the [S1 File](#)). The AUC_{diff} values indicate low levels of over-fitting (see Tables B–E in the [S1 File](#)). The variables of proportion of old growth forest in a 1-2km radius, temperature seasonality and minimum temperature of the coldest period were considered important variables for all target species. The 5th percentile of minimum temperatures explained the most variance in Yellow-bellied Glider and Sooty Owl models; similarly, the Greater Glider distribution was largely driven by the minimum temperature of the coldest period. Leadbeater's Possum distribution was driven mostly by the variability of the temperature (temperature seasonality). The relative probability of occurrence of Leadbeater's Possum, Greater Glider, Yellow-Bellied Glider and Sooty Owl in the study area is shown in [Fig 2](#). Further details of relevant environmental predictors are in Table A in [S1 File](#).

Performance of the existing reserve system

The existing Leadbeater's Possum reserve captured only 7.6% of the total cumulative value for the Leadbeater's Possum. The surrounding formal reserve system captured a larger percentage of the total cumulative value at 29.6% ([Table 3](#)). Smaller percentages were found for the other target species. For the Greater Glider, the Leadbeater's Possum reserve and formal reserve captured 4.2% and 23.8% of the cumulative values, respectively. Similarly for the Yellow-Bellied Glider, the Leadbeater's Possum reserve and formal reserve captured 3.4% and 24.3%, respectively; and for the Sooty Owl, it was 4.8% and 26%, respectively.

Reserve expansion scenarios

An expansion of the current Leadbeater's Possum reserve system was analysed in Zonation using the SDMs for each of the four species under the three different weighting schemes (*viz*: equal, linear, and logarithmic weights). All reserve scenarios prioritised areas outside the existing Leadbeater's Possum reserve and the remaining formal reserve system ([Fig 3](#)). The Equal Weighting identified an additional 23,393 hectares and 95,806 hectares being added to the formal reserve system for Scenarios 1 and 2, respectively. The Linear Weighting identified an additional 22,981 hectares and 102,156 hectares for Scenarios 1 and 2, respectively. The Log

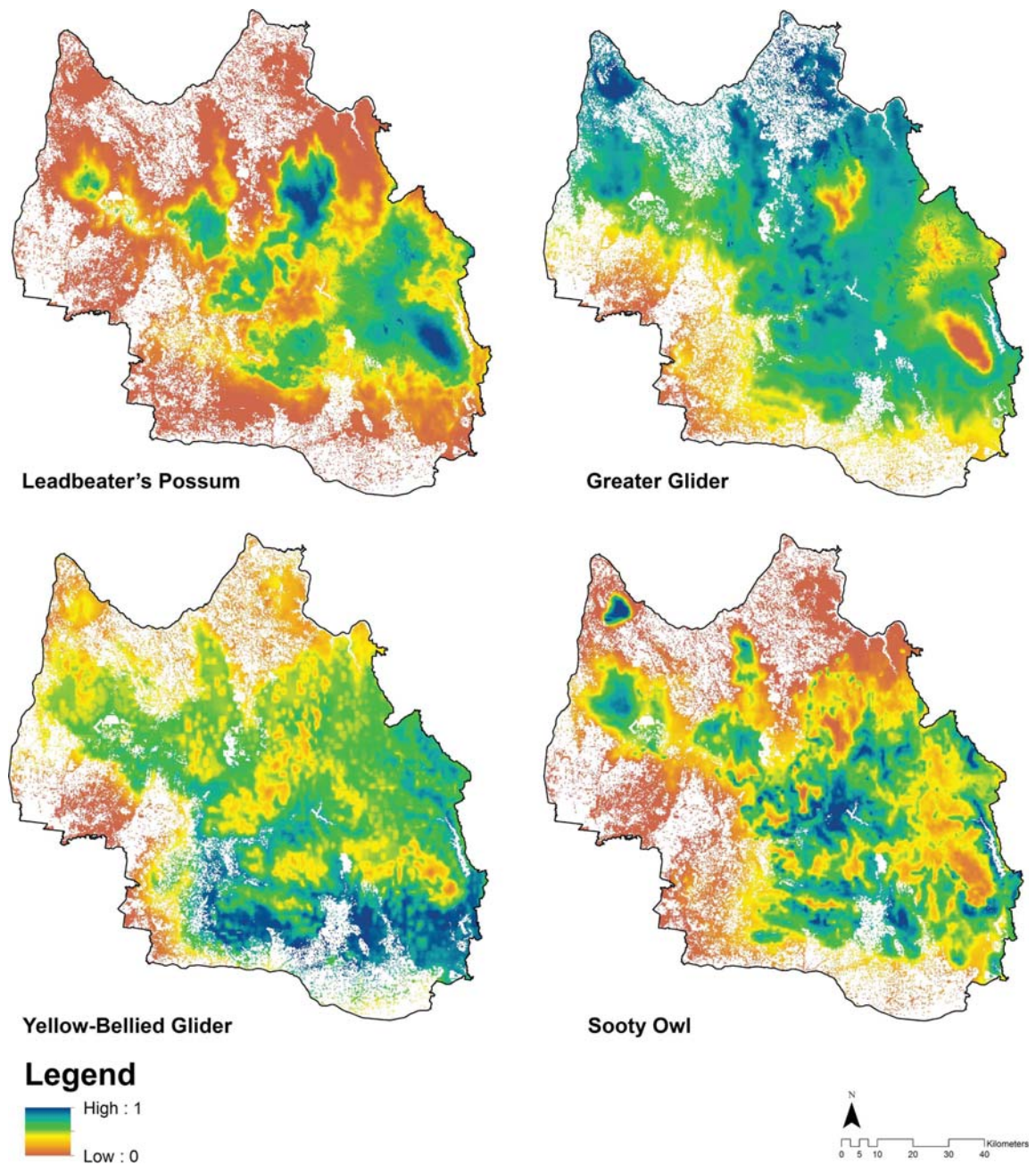


Fig 2. Relative probability of occurrence of Leadbeater's Possum, Greater Glider, Yellow-Bellied Glider and Sooty Owl in the Central Highlands of Victoria, ranked as values (0–1).

doi:10.1371/journal.pone.0169629.g002

Table 3. Percentage of cumulative habitat suitability values captured within the reserve system for Leadbeater's Possum Reserve and the combined area of the Leadbeater's Possum Reserve and surrounding reserve system.

Land Tenure	Leadbeater's Possum (%)	Greater Glider (%)	Yellow-bellied Glider (%)	Sooty Owl (%)
Leadbeater's Possum Reserve	7.6	4.2	3.4	4.8
Existing Reserve System	29.6	23.8	24.3	26

doi:10.1371/journal.pone.0169629.t003

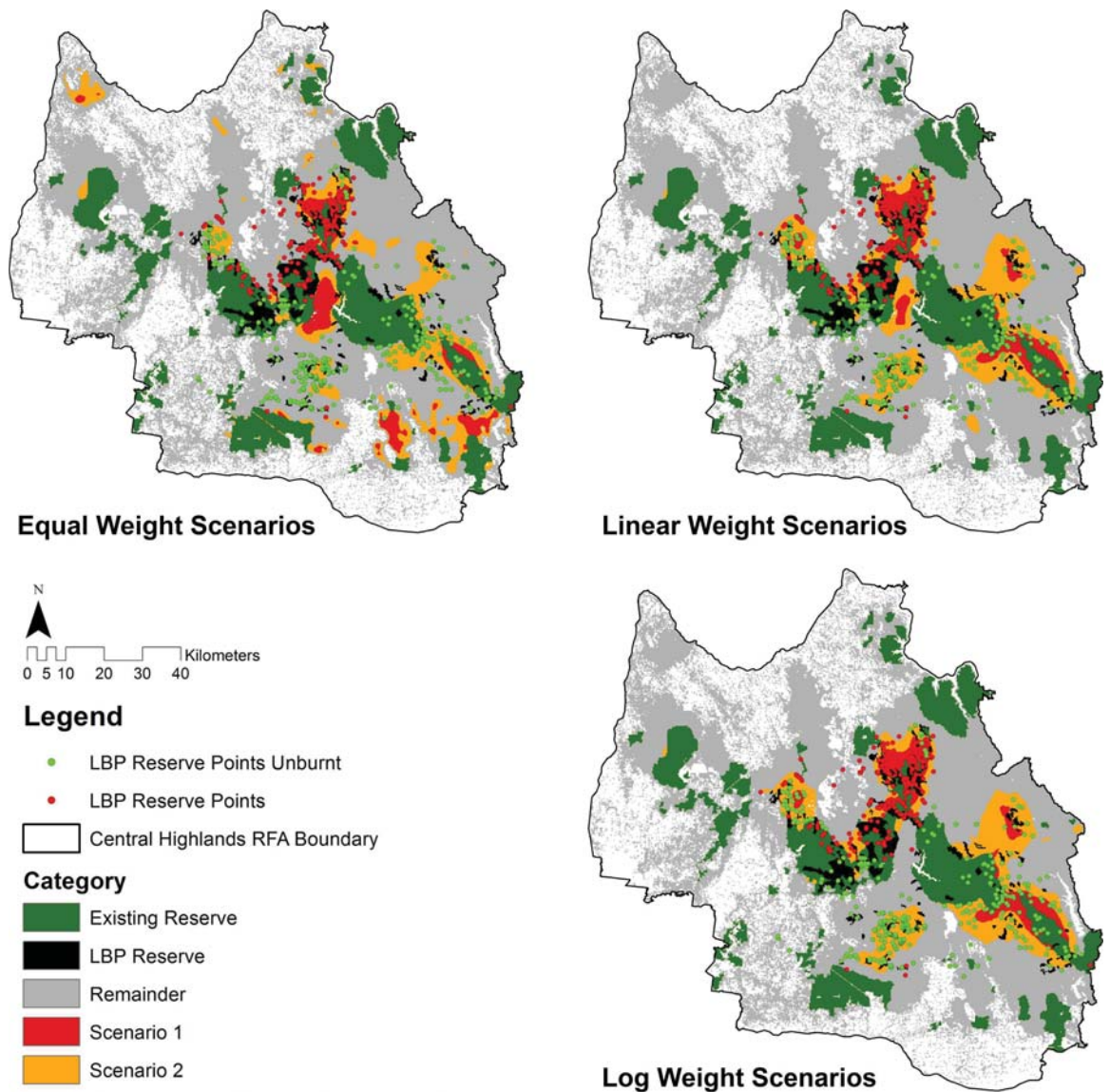


Fig 3. Three Zonation solutions modelling the expansion of the reserve system for Leadbeater's Possum generated using: (a) equal, (b) linear and (c) log species weighting schemes based on threat status and the Maxent SDMs for each species. The equal weighted scenario resulted in the largest reserve expansion in area under scenario 1 and the linear scenario resulted in the largest area for reserve expansion in area under Scenario 2 (see text).

doi:10.1371/journal.pone.0169629.g003

Weighting identified an additional 22,450 hectares and 101,400 hectares for Scenarios 1 and 2, respectively.

The reserve scenarios for the Log, Linear and Equal Weighting Zonation solutions increased the cumulative value percentage captured within the reserve system. Under the Log weighting, the Leadbeater's Possum cumulative value percentage increased from 29.6% under the existing reserve system to 38% and 62% for scenarios 1 and 2, respectively (Table 4). The Linear Weighting was equal for scenario 1 and marginally less at 60% for scenario 2. The Equal weighting was least efficient in capturing modelled distributions for Leadbeater's Possum at 34% and 49% for scenarios 1 and 2, respectively. The log weighting scenarios were

Table 4. Percentages of the cumulative values for the four target species across all of the cells included in the expanded reserve scenarios.

Weight	Scenario	Leadbeater's Possum (%)	Greater Glider (%)	Yellow-bellied Glider (%)	Sooty Owl (%)
Equal	Scenario 1	33.7	26.6	28.3	31.0
	Scenario 2	49.2	35.5	38.7	43.5
Linear	Scenario 1	37.7	26.0	27.2	28.9
	Scenario 2	60.0	36.1	37.0	41.4
Logarithmic	Scenario 1	38.1	25.8	27.1	28.4
	Scenario 2	61.5	35.8	36.5	40.0

doi:10.1371/journal.pone.0169629.t004

marginally less efficient in capturing the modelled occupancy distribution for the Greater Glider, Yellow-bellied Glider and Sooty Owl, compared with the Linear and Equal Weighting scenarios (Table 5).

The differences for the individual target species between the weighted solutions was greatest for the Leadbeater's Possum, where there was a 4.4% and 12.3% difference between the Log and Equal weighted solutions for scenarios 1 and 2, respectively. The least difference between weighted solutions for scenario 1 was for the Yellow-bellied Glider, where there was a 0.1% difference between the Log and Linear weighted solutions for Scenario 2, and there was a 0.3% difference between the Log and Linear weighted solutions for the Greater Glider under Scenario 2.

Discussion

Assessing the design of reserve systems is a key task in conservation science [1,46]. Critical to such assessments is determining how well a protected area conserves a given target taxon and then quantifying how well other species might be conserved by that reserve (e.g. [54]). We have presented a robust method for assessing the effectiveness of the existing reserve system for a critically endangered species (Leadbeater's Possum) and then conducted a systematic analysis of the trade-offs between conservation priorities for multiple other threatened species. Our approach integrated a systematic analysis of conservation area requirements for ensuring threatened species persistence with spatially explicit recommendations about where to provide extra protection that balances the needs of multiple threatened species; evaluating both conservation adequacy and representativeness together.

We found an acute trade-off between conserving key areas for Leadbeater's Possum and conserving habitat for other forest-dependent species. This arises because their habitat requirements do not strongly overlap. For example, 40% of the Sooty Owl distribution was captured under log weight scenario 2. If equal weights were applied to each species, 44% of the Sooty Owl distribution could be captured under the same scenario. This 4% increase in the representation of the Sooty Owl would come at the cost of a 13% reduction in protection of the

Table 5. Pairwise difference (%) of cumulative values of distributions captured under the reserve scenarios using the different species weighting schemes for each of the target species.

Scenario	Weighting Comparison	Leadbeater's Possum (%)	Greater Glider (%)	Yellow-Bellied Glider (%)	Sooty Owl (%)
1	Log-Equal	4.4	-0.7	-1.2	-2.5
	Log-Linear	0.4	-0.2	-0.1	-0.4
	Linear-Equal	4.0	-0.6	-1.2	-2.1
2	Log-Equal	12.3	0.3	-2.2	-3.5
	Log-Linear	1.5	9.8	9.2	11.2
	Linear-Equal	10.8	0.6	-1.7	-2.1

doi:10.1371/journal.pone.0169629.t005

distribution of Leadbeater's Possum. Similar trade-offs are apparent for each of the species pairs under different reserve expansion options and preferences for species weights (Table 5). Given the acute threat to medium-term persistence of Leadbeater's Possum posed by the combination of fire and logging, it seems appropriate to use the logarithmic weighting scheme presented here or to prioritize solely based on Leadbeater's habitat, as it affords a higher level of protection to that species. However, a key strength of our approach is that it allows quantification of the implications of such an approach for other species representation in the reserve system. In other ecosystems, that might be characterized by either a greater number of critically endangered species or a more even spread of threat status, it may be more appropriate to employ a flatter weighting such as 'linear' or 'equal weights' across all species. Our approach to the analysis provides a transparent way to communicate those trade-offs to planners and the public.

Spatial prioritization does not, on its own, provide guidance on how much area should be conserved to ensure persistence of a target species. Population viability analyses can provide these area targets, but PVA alone does not provide spatially explicit recommendations for where additional protected areas should be located. Together, however, as we have shown in this paper, these two approaches can provide informed, species-specific targets for conservation areas and determine where in the landscape they are best placed. Due to the difficulty in obtaining informed conservation area targets, many Zonation studies have relied on arbitrary area thresholds for spatial prioritisation, with only a few studies providing a rationale for setting these thresholds based on analysis of persistence (e.g. [29]). By using PVA to set a biologically-relevant conservation area target for spatial prioritization, there is greater certainty in the effectiveness of targets in ensuring the persistence of species of interest.

We used the best publically-available data to build the SDMs and the recent PVA by Todd *et al.* (2016) to analyze biologically-relevant conservation area targets, improving the levels of certainty in the results. However, there are a number of avenues for furthering this work, should more data become available. Presence-absence data would allow occupancy models to be fitted; which are generally considered to better account for bias and enable better discrimination between suitable and unsuitable habitat [41]. The number of species considered in this study was relatively small, especially compared to many spatial prioritization analyses (e.g. [12]). Other local species could be considered; however, due to the emphasis here on habitat destruction resulting from widespread logging, modelling forest-dependent species known to be impacted by logging [16,18,19] is justified.

PVAs require a large number of difficult-to-obtain parameters to make robust predictions. Todd *et al.* (2016) modelled and provided conservation area targets only for Leadbeater's Possum. If PVAs were available for all the species in this study, more detailed trade-offs between species could be analyzed and a target-based conservation planning approach, such as Marxan [11], would provide complementary information.

Given the current state of knowledge and the urgency with which decisions about the conservation of a critically endangered species must be made, this study provides crucial and tangible recommendations about where to implement conservation action. The study has also provided insights into the adequacy of the reserve system for protecting a critically endangered species, and set a template for analyzing trade-offs between conservation outcomes for a range of species of interest.

Supporting Information

S1 File. Table A. List of environmental variables used to construct Maxent models of four priority fauna species in the Central Highlands of Victoria. Appendix. Description of the

MAXENT models used for the analyses. All models were initially fitted using all available feature types, with 10-fold cross-validation. The background points for the possum and glider species were the presence records of the other two species combined. This is a common approach accounting for bias in presence-only modelling (called Target Group Sampling), where records of species that are surveyed using similar methods can be used as background points. The Sooty Owl background points used presences for all owls in the Central Highlands region that were available on the Atlas of Living Australia (www.ala.org.au), with <1000m accuracy. The models for each species were then refined by removing variables that contributed <1% of the permutation importance in the initial model, and by assessing the most appropriate feature types to capture species' responses to environmental gradients. Ultimately, all four species' final models were fitted using only hinge features, which produced complex, smoothed response curves that were easily interpretable. The contribution of each environmental variable included in final MAXENT model for each species is shown in Tables B-E below, alongside the cross-validated test AUC for that model. The mean AUC_{diff} for each model is also shown. AUC_{diff} describes the minimum difference between the AUC of the training dataset and that of the test dataset [8]. This represents another way of assessing the performance of the models; where a smaller AUC_{diff} value indicates a less over-fitted model. Other common validation statistics such as the True Skill Statistic (TSS) [9] were not used as the model predictions were not thresholded (to avoid losing information when it is not necessary [10]) and therefore this statistic is not relevant to this work. All variables listed in Tables B to E contributed >1% permutation importance in the initial model. (DOCX)

Acknowledgments

NC and BW were support by ARC Future Fellowship FT100100819. DBL was supported by ARC Laureate Fellowship FL120100108. Helpful advice on modelling and data were provided by Graeme Newell, Michael Scroggie, and Matt White (Victoria's Arthur Rylah Institute). The authors would like to thank Kristen Williams at CSIRO for some of the environmental data, which was compiled as part of a Caring for Country project co-funded by CSIRO and the Department of the Environment, Water, Heritage and the Arts.

Author Contributions

Conceptualization: CT NC BW DL.

Formal analysis: CT NC BW DL.

Funding acquisition: BW DL.

Investigation: CT NC BW DL.

Methodology: CT NC BW DL.

Software: CT.

Supervision: BW DL.

Visualization: CT NC BW.

Writing – original draft: CT NC BW DL.

Writing – review & editing: CT NC BW DL.

References

1. Worboys GL, Lockwood M, Kothari A, Feary S, Pulsford I, editors (2015) Protected Area Governance and Management. Canberra, Australia: ANU Press.
2. Watson JEM, Dudley N, Segan DB, Hockings M. The performance and potential of protected areas. *Nature*. 2014; 515: 67–73. doi: [10.1038/nature13947](https://doi.org/10.1038/nature13947) PMID: [25373676](https://pubmed.ncbi.nlm.nih.gov/25373676/)
3. Lindenmayer DB, Franklin JF. Conserving Forest Biodiversity: A Comprehensive Multiscaled Approach. Washington DC: Island Press; 2002.
4. Laurance WF, Useche DC, Rendeiro J, Kalka M, Bradshaw CJA, Sloan SP, et al. Averting biodiversity collapse in tropical forest protected areas. *Nature*. 2012; 489: 290–294. doi: [10.1038/nature11318](https://doi.org/10.1038/nature11318) PMID: [22832582](https://pubmed.ncbi.nlm.nih.gov/22832582/)
5. Rodrigues ASL, Brooks TM. Shortcuts for biodiversity conservation planning: The effectiveness of surrogates. *Ann Rev Ecol Evol Syst*. 2007; 38: 713–737.
6. Chen Y, Zhang J, Jiang J, Nielsen SE, He F. Assessing the effectiveness of China's protected areas to conserve current and future amphibian diversity. *Divers Distrib*. 2016;
7. Klein CJ, Steinback C, Watts M, Scholz AJ, Possingham HP. Spatial marine zoning for fisheries and conservation. *Front Ecol Evol*. 2010; 8: 349–353.
8. Phillips SJ, Anderson RP, Schapire RE. Maximum entropy modeling of species geographic distributions. *Ecol Model*. 2006; 190: 231–259.
9. Rodríguez JP, Brotons L, Bustamante J, Seoane J. The application of predictive modelling of species distribution to biodiversity conservation. *Divers Distrib*. 2007; 13: 243–251.
10. Moilanen A, Franco AMA, Early RI, Fox R, Wintle B, Thomas CD. Prioritizing multiple-use landscapes for conservation: methods for large multi-species planning problems. *Proc Roy Soc B: Biol Sci*. 2005; 272: 1885–1891.
11. Ball IR, Possingham HP, Watts M. Marxan and relatives: Software for spatial conservation prioritisation. In: Moilanen A, Wilson KA, Possingham HP, editors. *Spatial Conservation Prioritisation: Quantitative Methods and Computational Tools*. Oxford, UK: Oxford University Press; 2009. pp. 185–195.
12. Kujala H, Whitehead AL, Morris WK, Wintle BA. Towards strategic offsetting of biodiversity loss using spatial prioritization concepts and tools: A case study on mining impacts in Australia. *Biol Conserv*. 2015; 192: 513–521.
13. Rayner L, Lindenmayer DB, Wood JT, Gibbons P, Manning AD. Are protected areas maintaining bird diversity? *Ecography*. 2014; 37: 43–53.
14. Russo D, Di Febbraro M, Cistrone L, Jones G, Smeraldo S, Garonna AP, et al. Protecting one, protecting both? Scale-dependent ecological differences in two species using dead trees, the rosalia longicorn beetle and the barbastelle bat. *J Zool*. 2015; 297: 165–175.
15. Lindenmayer DB, Barton PS, Lane PW, Westgate MJ, McBurney L, Blair D, et al. An empirical assessment and comparison of species-based and habitat-based surrogates: A case study of forest vertebrates and large old trees. *PLOS One*. 2014; 9: e89807. doi: [10.1371/journal.pone.0089807](https://doi.org/10.1371/journal.pone.0089807) PMID: [24587050](https://pubmed.ncbi.nlm.nih.gov/24587050/)
16. Lindenmayer DB. *Forest Pattern and Ecological Process: A Synthesis of 25 Years of Research*. Melbourne: CSIRO Publishing; 2009.
17. Lindenmayer DB, Blanchard W, McBurney L, Blair D, Banks SC, Driscoll D, et al. Fire severity and landscape context effects on arboreal marsupials. *Biol Conserv*. 2013; 167: 137–148.
18. Todd CR, Lindenmayer DB, Stamation K, Acevedo-Cattaneo S, Smith S, Lumsden LF. Assessing reserve effectiveness: Application to a threatened species in a dynamic fire prone forest landscape. *Ecol Model*. 2016; 338: 90–100.
19. Lumsden LF, Nelson JL, Todd C, Scroggie P, McNabb E, Raadik TA, et al. (2013) A new strategic approach to biodiversity management—research component. Melbourne: Arthur Rylah Institute for Environmental Research.
20. Lindenmayer DB, Blair D, McBurney L, Banks S. Mountain Ash. Fire, Logging and the Future of Victoria's Giant Forests. Melbourne: CSIRO Publishing; 2015.
21. Lindenmayer DB, Blair D, McBurney L, Banks SC. The need for a comprehensive reassessment of the Regional Forest Agreements in Australia. *Pac Conserv Biol*. 2015; 21: 266–270.
22. Lindenmayer DB, Blanchard W, Blair D, McBurney L, Banks SC. Environmental and human drivers of large old tree abundance in Australian wet forests *Forest Ecol Manage*. 2016; 372: 266–235.
23. Lindenmayer DB, McCarthy MA, Parris KM, Pope ML. Habitat fragmentation, landscape context, and mammalian assemblages in Southeastern Australia. *J Mammal*. 2000; 81: 787–797.

24. Lindenmayer DB, Wood JT, McBurney L, MacGregor C, Youngentob K, Banks SC. How to make a common species rare: A case against conservation complacency. *Biol Conserv.* 2011; 144: 1663–1672.
25. Taylor AC, Tyndale-Biscoe H, Lindenmayer DB. Unexpected persistence on habitat islands: genetic signatures reveal dispersal of a eucalypt-dependent marsupial through a hostile pine matrix. *Mol Ecol.* 2007; 16: 2655–2666. doi: [10.1111/j.1365-294X.2007.03331.x](https://doi.org/10.1111/j.1365-294X.2007.03331.x) PMID: [17594437](https://pubmed.ncbi.nlm.nih.gov/17594437/)
26. Gibbons P, Lindenmayer DB. *Tree Hollows and Wildlife Conservation in Australia*. Melbourne: CSIRO Publishing; 2002.
27. Department of Sustainability and Environment (2004) Action Statement (No. 92), Flora and Fauna Guarantee Act 1988: Sooty Owl *Tyto tenebricosa*. Melbourne, Victoria: Department of Sustainability and Environment.
28. Lindenmayer DB, Cunningham RB, McCarthy MA. The conservation of arboreal marsupials in the montane ash forests of the Central Highlands of Victoria, south-eastern Australia. VIII. Landscape analysis of the occurrence of arboreal marsupials. *Biol Conserv.* 1999; 89: 83–92.
29. Sebastián-González E, Sánchez-Zapata JA, Botella F, Figuerola J, Hiraldo F, Wintle BA. Linking cost efficiency evaluation with population viability analysis to prioritize wetland bird conservation actions. *Biol Conserv.* 2011; 144: 2354–2361.
30. Department of Environment Land Water and Planning (1998) Forest Management Plan for the Central Highlands. Melbourne: Government of Victoria.
31. Commonwealth of Australia (1998) The Central Highlands Regional Forest Agreement. Canberra: Department of Agriculture and Water Resources. Available at <http://www.agriculture.gov.au/forestry/policies/rfa/regions/vic-centralhighlands>.
32. Burns EL, Lindenmayer DB, Stein J, Blanchard W, McBurney L, Blair D, et al. Ecosystem assessment of mountain ash forest in the Central Highlands of Victoria, south-eastern Australia. *Austral Ecol.* 2015; 40: 386–399.
33. Lutze MT, Campbell RG, Fagg PC. Development of silviculture in the native State forests of Victoria. *Aust Forest.* 1999; 62: 236–244.
34. McCarthy MA, Malcolm Gill A, Lindenmayer DB. Fire regimes in mountain ash forest: evidence from forest age structure, extinction models and wildlife habitat. *Forest Ecol Manage.* 1999; 124: 193–203.
35. Taylor C, McCarthy MA, Lindenmayer DB. Nonlinear effects of stand age on fire severity. *Conserv Lett.* 2014; 7: 355–370.
36. Blair DP, McBurney LM, Blanchard W, Banks SC, Lindenmayer DB. Disturbance gradient shows logging affects plant functional groups more than fire. *Ecol Appl.* 2016; 26: 2280–2301. doi: [10.1002/eap.1369](https://doi.org/10.1002/eap.1369) PMID: [27755744](https://pubmed.ncbi.nlm.nih.gov/27755744/)
37. Smith S, Morey J (2001) Options for a permanent reserve system for the conservation of Leadbeater's Possum. Melbourne, Victoria: Department of Natural Resources and Environment.
38. Department of Environment Land Water and Planning. Victorian Biodiversity Atlas. 2016. Available: <http://www.depi.vic.gov.au/environment-and-wildlife/biodiversity/victorian-biodiversity-atlas>.
39. Xu T, Hutchinson MF (2011) ANUCLIM Version 6.1. Canberra: Fenner School of Environment and Society, The Australian National University. Available: <http://fennerschool.anu.edu.au/research/products/anuclim-vrsn-61>.
40. Williams KJ, Belbin L, Austin MP, Stein JL, Ferrier S. Which environmental variables should I use in my biodiversity model? *Int J Geogr Inf Syst.* 2012; 26: 2009–2047.
41. Phillips SJ, Dudík M, Elith J, Graham CH, Lehmann A, Leathwick J, et al. Sample selection bias and presence-only distribution models: implications for background and pseudo-absence data. *Ecol Appl.* 2009; 19: 181–197. PMID: [19323182](https://pubmed.ncbi.nlm.nih.gov/19323182/)
42. Merow C, Smith MJ, Silander JA. A practical guide to MaxEnt for modeling species' distributions: what it does, and why inputs and settings matter. *Ecography.* 2013; 36: 1058–1069.
43. Hanley JA, McNeil BJ. The meaning and use of the area under a receiver operating characteristic (ROC) curve. *Radiology.* 1982; 143: 29–36. doi: [10.1148/radiology.143.1.7063747](https://doi.org/10.1148/radiology.143.1.7063747) PMID: [7063747](https://pubmed.ncbi.nlm.nih.gov/7063747/)
44. Warren DL, Seifert SN. Environmental niche modeling in Maxent: the importance of model complexity and the performance of model selection criteria. *Ecol Appl.* 2011; 21: 335–342. PMID: [21563566](https://pubmed.ncbi.nlm.nih.gov/21563566/)
45. Moilanen A, FM. P, Meller L, Veach V, Atonen A, Leppanen J, et al. Zonation: Spatial conservation planning and methods software—User Manual, Version 4. University of Helsinki, Finland: C-BIG Conservation Biology Informatics Group, Department of Biosciences; 2014.
46. Margules CR, Pressey RL. Systematic conservation planning. *Nature.* 2000; 405: 243–253. doi: [10.1038/35012251](https://doi.org/10.1038/35012251) PMID: [10821285](https://pubmed.ncbi.nlm.nih.gov/10821285/)
47. IUCN. The IUCN Red List of Threatened Species 2016. 2016. Available: <http://www.iucnredlist.org>.

48. Fiorella K, Cameron A, Sechrest W, Winfree R, Kremen C. Methodological considerations in reserve system selection: A case study of Malagasy lemurs. *Biol Conserv.* 2010; 143: 963–973.
49. Department of Environment Land Water and Planning. Flora and Fauna Guarantee Act 1988, Threatened List, July 2016. 2016. Available: http://delwp.vic.gov.au/_data/assets/pdf_file/0004/302827/Attach-1_20160711-FFG-threatened-list.pdf.
50. Lindenmayer DB, Lacy RC. Metapopulation viability of arboreal marsupials in fragmented old-growth forests: comparison among species. *Ecol Appl.* 1995; 5: 183–199.
51. Lindenmayer DB, McCarthy MA. Evaluation of PVA models of arboreal marsupials: coupling models with long-term monitoring data. *Biodivers Conserv.* 2006; 15: 4079–4096.
52. Milledge DR, Palmer CL, Nelson JL. 'Barometers of change': the distribution of large owls and gliders in Mountain Ash forests of the Victorian Central Highlands and their potential as management indicators. In: Lunney D, editor. *Conservation of Australia's forest fauna.* Sydney: Royal Zoological Society of N. S.W.; 1991. pp. 53–65.
53. Possingham HP, Lindenmayer DB, Norton TW, Davies I. Metapopulation viability analysis of the greater glider *Petauroides volans* in a wood production area. *Biol Conserv.* 1994; 70: 227–236.
54. Caro T. *Conservation by Proxy. Indicator, Umbrella, Keystone, Flagship, and Other Surrogate Species.* Washington D.C.: Island Press; 2010.