



Western Michigan University
ScholarWorks at WMU

Legacy Scout Tickets from Pure Oil Company

8-22-2021

MGRRE_PureOilScoutTickets_Rouen, J. O._1_21107021950000

MGRRE

Western Michigan University

Follow this and additional works at: <https://scholarworks.wmich.edu/pure>



Part of the Geology Commons

WMU ScholarWorks Citation

MGRRE, "MGRRE_PureOilScoutTickets_Rouen, J. O._1_21107021950000" (2021). *Legacy Scout Tickets from Pure Oil Company*. 10920.

<https://scholarworks.wmich.edu/pure/10920>

This Document is brought to you for free and open access via ScholarWorks at WMU. It has been accepted for inclusion in Legacy Scout Tickets from Pure Oil Company by an authorized administrator of ScholarWorks at WMU. See the National Digital Catalogue - Science Base Catalogue for more collections submitted by MGRRE.



MGRRE_PureOilScoutTickets_Rouen, J. O._1_21107021950000

API 21107021950000

Permit Number 2195

Lease Name Rouen, J. O.

Well Number 1

County Mecosta

Township 16N

Range 10W

Section 24

2021 DEQ or Pure co_name Daily Crude Oil Company The

Pure Number 27

Latitude 43.75776

Longitude -85.45732

THE PURE OIL COMPANY

LOCATION REPORT

DATE October 4, 1934

No. 27

STATE Michigan COUNTY Mecosta DIST. Green TWP. Green SEC. 24 TOWN 16N RANGE 10W

WELL No. 1 (SERIAL No. 27) FARM J. O. Rouen ACRES

NAME OF STREAM OR WATERS QUADRANGLE SW-SE-SW

OPERATOR Daily Crude Oil Company Map Green Township, Mecosta County
Daily Crude Oil Co. Green Twp - Mecosta Co.

Feet from North Line of Farm

" " East " " "

300 300 " " South " " "

300 300 " " West " " "

Feet from North Line of Section

1020 1020 " " East " " 1/4

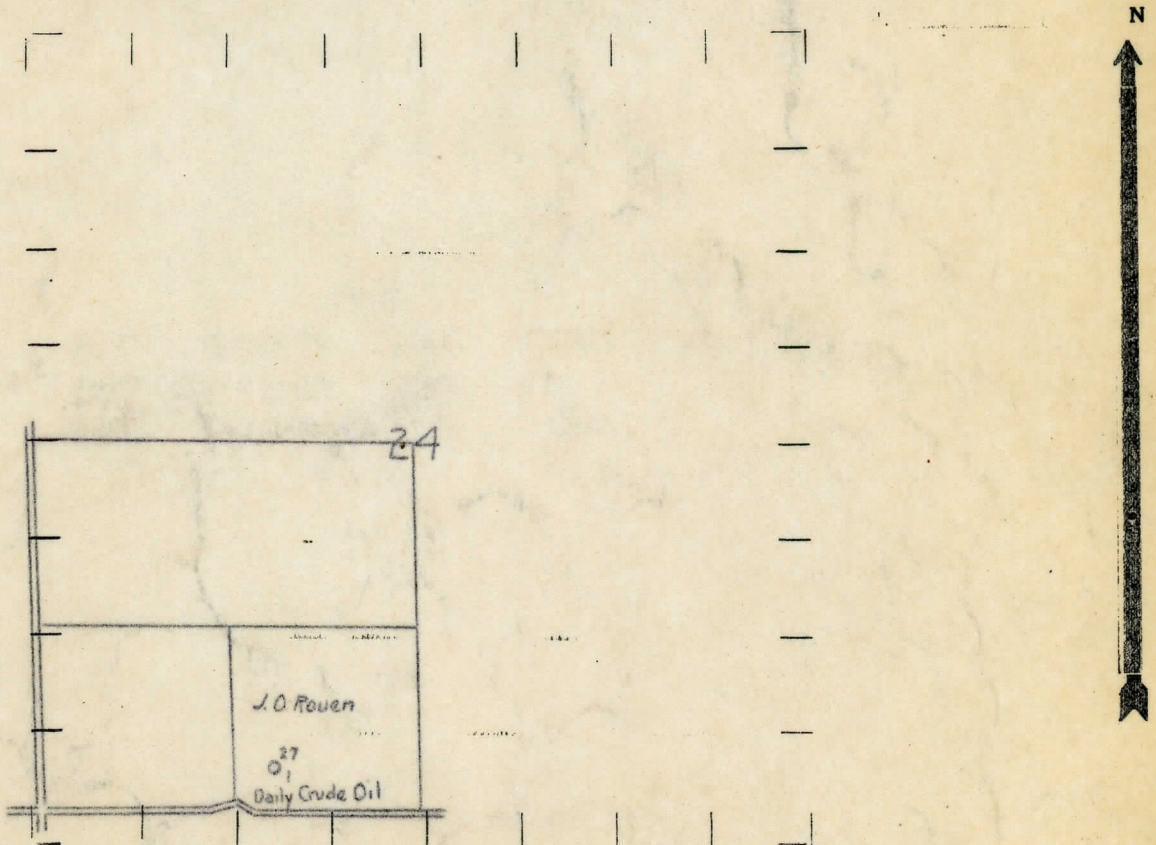
300 300 " " South " " "

" " West " " "

LEGEND

- LOCATION
- ⊙ RIG
- ⊕ DRILLING
- ☀ GAS WELL
- OIL WELL
- ⊖ SMALL OIL WELL
- ⊖ DRY HOLE
- ⊖ DRY SHOWING OIL
- ⊖ DRY SHOWING GAS
- ⊖ ABANDONED LOCATION
- ⊖ ABANDONED GAS WELL
- ⊖ ABANDONED OIL WELL

NOTE: Below make tracing from map, (when no map is obtainable make sketch) showing farm, center of section, this location with measurements and also wells, dry holes, or other locations in the vicinity of this location.



REMARKS:

SIGNED

R. L. Yeager

Superintendent or Foreman.

