



Western Michigan University
ScholarWorks at WMU

Legacy Scout Tickets from Pure Oil Company

8-20-2021

MGRRE_PureOilScoutTickets_Daverman, George J. & Josie_1_21139072850000

MGRRE

Western Michigan University

Follow this and additional works at: <https://scholarworks.wmich.edu/pure>



Part of the Geology Commons

WMU ScholarWorks Citation

MGRRE, "MGRRE_PureOilScoutTickets_Daverman, George J. & Josie_1_21139072850000" (2021). *Legacy Scout Tickets from Pure Oil Company*. 8816.
<https://scholarworks.wmich.edu/pure/8816>

This Document is brought to you for free and open access via ScholarWorks at WMU. It has been accepted for inclusion in Legacy Scout Tickets from Pure Oil Company by an authorized administrator of ScholarWorks at WMU. See the National Digital Catalogue - Science Base Catalogue for more collections submitted by MGRRE.



MGRRE_PureOilScoutTickets_Daverman, George J. & Josie_1_21139072850000

API 21139072850000

Permit Number 7285

Lease Name Daverman, George J. & Josie

Well Number 1

County Ottawa

Township 07N

Range 13W

Section 24

2021 DEQ or Pure co_name Columbia Oil and Gas Company

Pure Number 185

Latitude 42.98095

Longitude -85.79378

The Pure Oil Company
COMPLETION RECORD OF WELLS DRILLED BY OTHER OPERATORS

185 ✓

Michigan Producing Division

Date **February 21, 1940** No. **185**
 State **Mich.** County **Ottawa** District **Tallmadge** Twp. **7 N** Rge. **13 W**
 (Serial No.)
 Well No. **1** (~~185~~) **185** Farm **Geo. Davenport** Acres
 Operator **Columbia Oil and Gas Company** Information secured ~~from~~ **By Scouting Department**
 Date well started **1-27-40** Dated well completed **2-15-40** Elevation **753.6**

PRODUCTION RECORD

1st 24 hours natural **Dry Hole**
 2nd 24 hours natural
 Date of shot No. of quarts From to From to
 Date of acid No. of gallons
 shot
 1st 24 hours after acid
 shot
 2nd 24 hours after acid

FORMATION AND CASING RECORD

Formation	Top	Bottom	Top Pay	Bottom Pay	Remarks	Casing	
						Size	Set at
Marshall	270	518				10"	205
Red Rock	1210	1220				8-1/4"	538
Berea	1225	1257				5-3/16"	1921
Antrim	1660	1875	S.L.M.				
Traverse Lime	1919		1919	1921	Show oil.		
			1921	1922	Water.		
			1943	1947 ?	Increase in water.		
Total Depth		1975					

Remarks

Signed **D. C. Shackelford**

STATE Michigan COUNTY Ottawa DISTRICT Tallmadge TWP Tallmadge SEC. 24 TOWN 7 N RANGE 13 W

WELL No. 1 (SERIAL No. 185) FARM G. J. Daverman ACRES

NAME OF STREAM OR WATERS _____ QUADRANGLE SW-SW-NE
SW SW NE

OPERATOR Columbia Oil & Gas Company Map Tallmadge Township, Ottawa County
Columbia Oil & Gas Co. Tallmadge - Ottawa

_____ Feet from North Line of Farm

333333 " " East " " "

420420 " " South " " "

333333 " " West " " "

_____ Feet from North Line of Section

" " East " " "

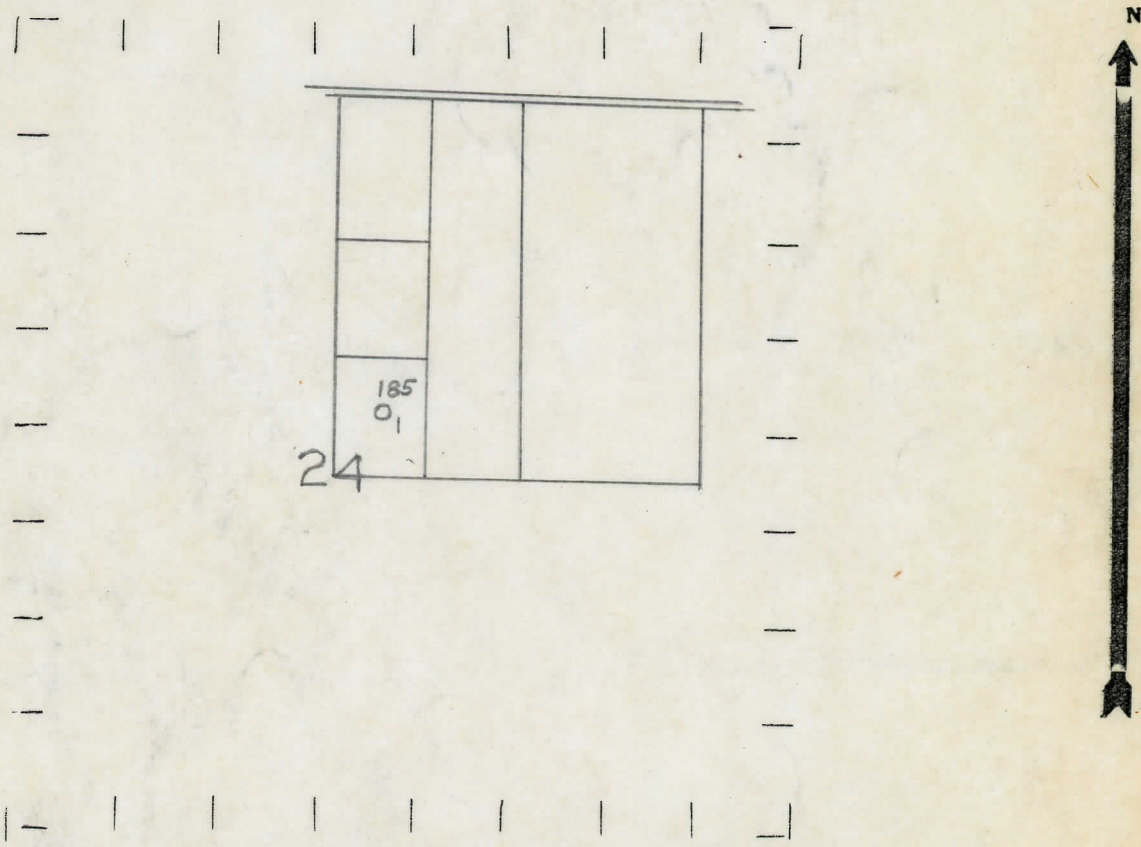
420420 " " South " 1/4 "

333333 " " West " 1/4 "

LEGEND

- LOCATION
- ⊕ RIG
- ⊕ DRILLING
- ☀ GAS WELL
- OIL WELL
- SMALL OIL WELL
- ⊖ DRY HOLE
- DRY SHOWING OIL
- ☀ DRY SHOWING GAS
- ⊖ ABANDONED LOCATION
- ☀ ABANDONED GAS WELL
- ABANDONED OIL WELL

NOTE: Below make tracing from map. (when no map is obtainable make sketch) showing farm, center of section, this location with measurements and also wells, dry holes, or other locations in the vicinity of this location.



REMARKS: _____

SIGNED

Superintendent or Foreman.