



Western Michigan University
ScholarWorks at WMU

Legacy Scout Tickets from Pure Oil Company

8-20-2021

MGRRE_PureOilScoutTickets_Ryan, Anna O._1_21111017320000

MGRRE

Western Michigan University

Follow this and additional works at: <https://scholarworks.wmich.edu/pure>



Part of the Geology Commons

WMU ScholarWorks Citation

MGRRE, "MGRRE_PureOilScoutTickets_Ryan, Anna O._1_21111017320000" (2021). *Legacy Scout Tickets from Pure Oil Company*. 5459.

<https://scholarworks.wmich.edu/pure/5459>

This Document is brought to you for free and open access via ScholarWorks at WMU. It has been accepted for inclusion in Legacy Scout Tickets from Pure Oil Company by an authorized administrator of ScholarWorks at WMU. See the National Digital Catalogue - Science Base Catalogue for more collections submitted by MGRRE.



MGRRE_PureOilScoutTickets_Ryan, Anna O._1_21111017320000

API 21111017320000

Permit Number 1732

Lease Name Ryan, Anna O.

Well Number 1

County Midland

Township 13N

Range 01W

Section 36

2021 DEQ or Pure co_name Stewart, Edward

Pure Number 511

Latitude 43.47965

Longitude -84.38836

THE PURE OIL COMPANY

DATE September 22, 1933

LOCATION REPORT

No. 511

STATE Michigan COUNTY Midland DIST. TWP. Porter SEC. 36 TOWN 13 N RANGE 1 W

WELL No. 1 (SERIAL No. 511) FARM Anna O. Ryan ACRES

NAME OF STREAM OR WATERS QUADRANGLE NW-NW-NW

OPERATOR Ed. Stewart MAP Porter Township, Midland County

330 Feet from North Line of Farm

" " East " " "

" " South " " "

330 " " West " " "

330 Feet from North Line of Section

" " East " " "

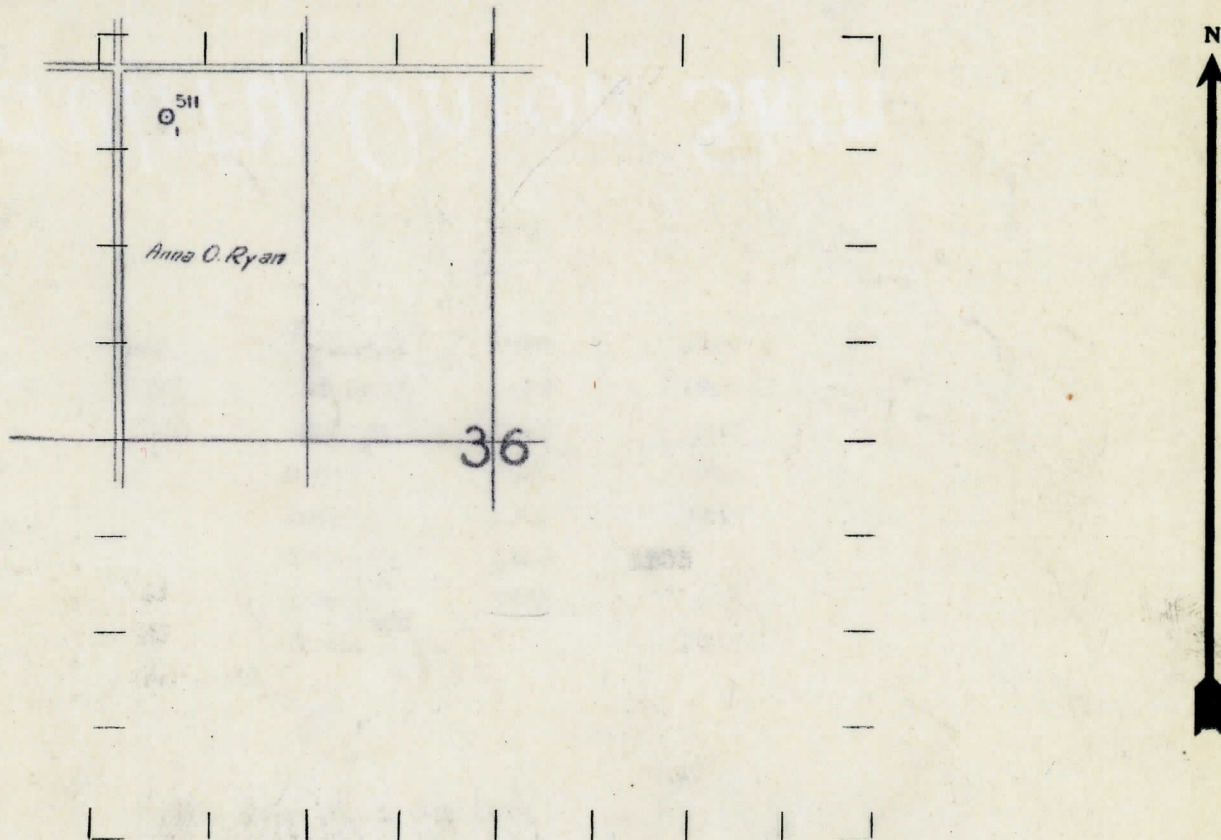
" " South " " "

330 " " West " " "

LEGEND

- LOCATION
- ⊙ RIG
- ⊕ DRILLING
- ⊛ GAS WELL
- OIL WELL
- ⊖ SMALL OIL WELL
- ⊕ DRY HOLE
- ⊛ DRY SHOWING OIL
- ⊕ DRY SHOWING GAS
- ⊖ ABANDONED LOCATION
- ⊛ ABANDONED GAS WELL
- ⊖ ABANDONED OIL WELL

NOTE: Below make tracing from map, (when no map is obtainable make sketch) showing farm, center of section, this location with measurements and also wells, dry holes, or other locations in the vicinity of this location. Make copy to keep for reference and send original to Columbus office.



REMARKS:

SIGNED

 Superintendent or Foreman.

THE PURE OIL COMPANY

Michigan Producing DIVISION
COMPLETION RECORD

No. 511

DATE 11/10/33

STATE Michigan COUNTY Midland DIST. TWP. Porter SEC. 36 TOWN 13 N RANGE 1 W

WELL No. 1 (SERIAL No. 511) FARM Anna O. Ryan ACRES

NAME OF STREAM OR WATERS QUADRANGLE NW-NW-NW

OPERATOR Edw. Stewart MAP Porter Township, Midland County

LOCATION REPORT SENT IN (DATE) 9-22-33

WELL STARTED (DATE) 9-22-33 WELL COMPLETED (DATE) 11/7/33

OIL WELL
 GAS WELL
 DRY HOLE
 ABANDONED WELL

Elevation 687.7'

CROSS OUT THREE OF THE ABOVE
WELL RECORD

DATE OF SHOT	NUMBER OF QUARTS
1st 24 HOURS PRODUCTION	Dry Hole
2nd " " "	" " "
3rd " " "	" " "
4th " " "	" " "
5th " " "	" " "

SAND AND CASING

CASING SIZE	WEIGHT	CASING Feet Inches	SAND Name and Nature	TOP	BOTTOM	TOP PAY	BOTTOM PAY	SALT WATER
10"		243	Marshall	1020	1147			
8 1/2"		755	Red Rock	1147	1225			
6-5/8"		1232	Sunbury	2265	2287			
			Berea	2287	2324			
			Antrim	2384	2750			
			Traverse	2750				
			Dundee	3563	S.L.M.			
			Total Depth		3413			3398

REMARKS Light show Oil & Gas 3374'

NOTE.—MAKE COPY TO KEEP FOR REFERENCE AND SEND ORIGINAL TO CHICAGO OFFICE. LIST MATERIAL CHARGEABLE TO WELL ON OTHER SIDE.

SIGNED *J.H. Bell* SUPT. OR FOREMAN