



Western Michigan University
ScholarWorks at WMU

Legacy Scout Tickets from Pure Oil Company

8-20-2021

**MGRRE_PureOilScoutTickets_Wampler, Paul
D._1_21111015590000**

MGRRE
Western Michigan University

Follow this and additional works at: <https://scholarworks.wmich.edu/pure>



Part of the Geology Commons

WMU ScholarWorks Citation

MGRRE, "MGRRE_PureOilScoutTickets_Wampler, Paul D._1_21111015590000" (2021). *Legacy Scout Tickets from Pure Oil Company*. 5397.
<https://scholarworks.wmich.edu/pure/5397>

This Document is brought to you for free and open access via ScholarWorks at WMU. It has been accepted for inclusion in Legacy Scout Tickets from Pure Oil Company by an authorized administrator of ScholarWorks at WMU. See the National Digital Catalogue - Science Base Catalogue for more collections submitted by MGRRE.



MGRRE_PureOilScoutTickets_Wampler, Paul D._1_21111015590000

API 21111015590000

Permit Number 1559

Lease Name Wampler, Paul D.

Well Number 1

County Midland

Township 14N

Range 02W

Section 9

2021 DEQ or Pure co_name Midway Tool Company

Pure Number 414

Latitude 43.6159

Longitude -84.56705

TPD

THE PURE OIL COMPANY

Date January 31, 1944 Corrected LOCATION REPORT A.F.E. No. _____

Division Mich. Producing District _____ Lease Paul D. Wampler

Acres _____ Lease No. _____ Elevation _____ Well No. 1 (Serial No. 414)

Quadrangle N 3/4 W 1/2 SW Sec. 9 Twp. 14 N Rge. 2 W ~~Dist.~~ ~~Twp.~~ Greendale

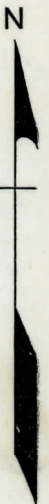
Survey _____ County Midland State Michigan

Operator Midway Tool Company Map Greendale Township, Midland County

_____ Feet from North Line of Lease
 _____ " " East " " "
 _____ " " South " " "
 _____ " " West " " "
 _____ Feet from North Line of Section
 _____ " " East " " "
 _____ " " South " " "
 _____ " " West " " "

LEGEND

- Location
- ☀ Gas Well
- Oil Well
- ☀ Gas - Distillate Well
- ∅ or ○ Dry Hole
- Dry Showing Oil
- ☀ Dry Showing Gas
- ⊗ Abandoned Location
- ☀ or ☀ Abandoned Gas Well
- or ● Abandoned Oil Well
- or ○ Input Well



See plat - Midland #414.

Remarks: Change of operator. Scale _____

Submitted by Scouting Dept. ~~Chief Engineer~~ Approved by _____ Division Manager

Approved by _____ Vice-President - General Manager

Division Mich. Producing District _____ Lease Paul Wampler

Date November 15, 1943 LOCATION REPORT V.L.E. No. _____ A.F.E. No. _____

Division Mich. Producing District _____ Lease Paul Wampler

Acres _____ Lease No. _____ Elevation _____ Well No. 1 (Serial No. 414)

Quadrangle N-3/4 W 1/2 SW 1/4 Sec. 9 Twp. 14 N Rge. 2 W Twp. Greendale

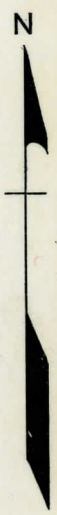
Survey _____ County Midland State Michigan

Operator Geo. W. Giffert Map Greendale Township, Midland County

_____ Feet from North Line of Lease
 _____ " " East " " "
 _____ " " South " " "
 _____ " " West " " "
 _____ Feet from North Line of Section
 _____ " " East " " "
 _____ " " South " " "
 _____ " " West " " "

LEGEND

- Gas Well
- Oil Well
- Gas - Distillate Well
- Dry Hole
- Dry Showing Oil
- Dry Showing Gas
- Abandoned Location
- Abandoned Gas Well
- Abandoned Oil Well
- Input Well



Plugged and abandoned 10-11-43.

Total Depth 3576'.

Scale _____

Remarks: _____

Submitted by _____ Civil Engineer Approved by _____ Division Manager
 Approved by _____ Vice-President - General Manager

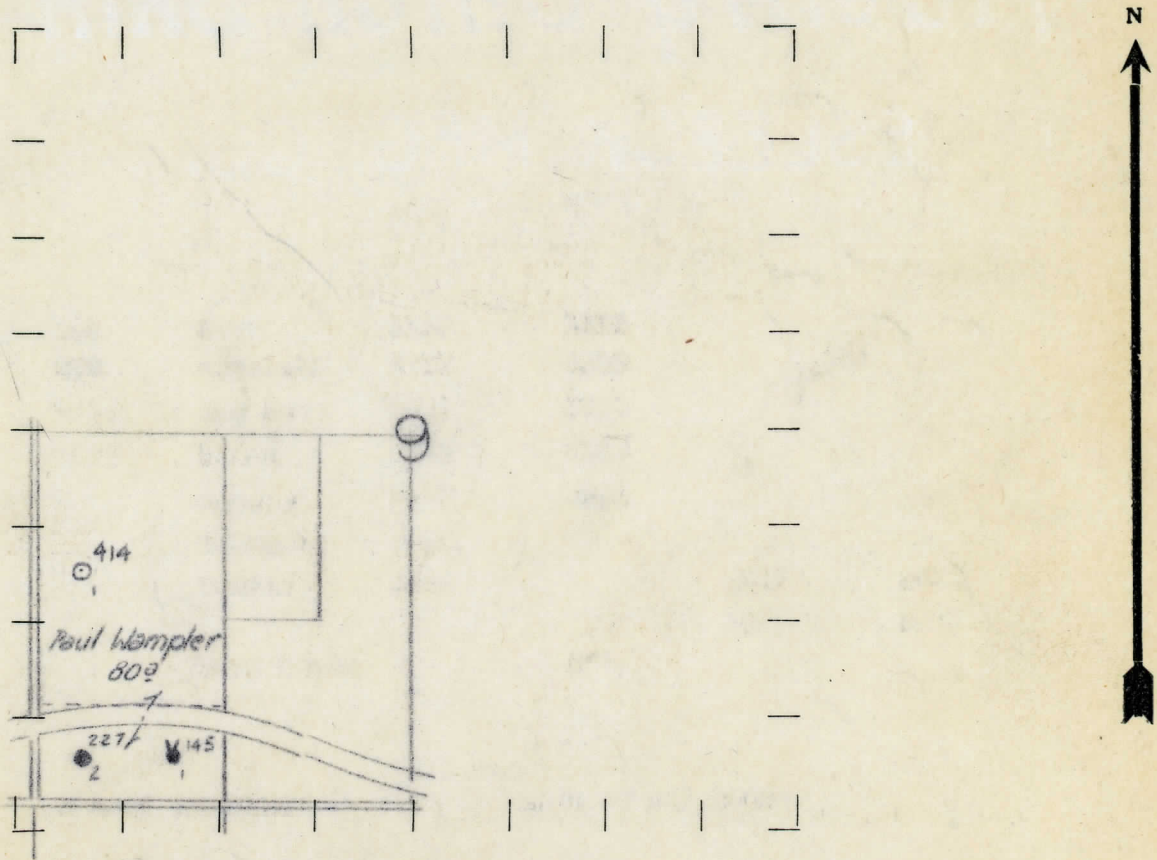
STATE Michigan COUNTY Midland DIST. Greendale TWP. Greendale SEC. 9 TOWN 14N RANGE 2W
 WELL No. 1 (SERIAL No. 414) FARM Paul Wampler 60 ACRES
 NAME OF STREAM OR WATERS QUADRANGLE N $\frac{1}{2}$ -W $\frac{1}{2}$ -SW $\frac{1}{4}$
 OPERATOR Geo. W. Giffert MAP

990 Feet from North Line of Farm
 " " East " " "
 " " South " " "
 330 " " West " " "
 Feet from North Line of Section
 " " East " " "
 1650 " " South " " "
 330 " " West " " "

- LEGEND**
- LOCATION
 - ⊙ RIG
 - ⊕ DRILLING
 - ⊗ GAS WELL
 - OIL WELL
 - ⊙ SMALL OIL WELL
 - ⊕ DRY HOLE
 - ⊗ DRY SHOWING OIL
 - ⊗ DRY SHOWING GAS
 - ⊕ ABANDONED LOCATION
 - ⊗ ABANDONED GAS WELL
 - ⊕ ABANDONED OIL WELL

NOTE: Below make tracing from map, (when no map is obtainable make sketch) showing farm, center of section, this location with measurements and also wells, dry holes, or other locations in the vicinity of this location. Make copy to keep for reference and send original to Columbus office.

10-11-43



REMARKS:

SIGNED _____
 Superintendent or Foreman.

Michigan Producing DIVISION
COMPLETION RECORD

No. 414

DATE 9/21/33

STATE Michigan COUNTY Midland DIST. TWP. Greendale SEC. 9 TOWN 14 N RANGE 2W

WELL No. 1 (SERIAL No. 414) FARM Paul Wampler ACRES 60

NAME OF STREAM OR WATERS QUADRANGLE N²-W¹-SW¹

OPERATOR Geo. W. Giffert MAP Greendale Township, Midland County

LOCATION REPORT SENT IN (DATE) 6/30/33

WELL STARTED (DATE) 7/16/33 WELL COMPLETED (DATE) 9/11/33

OIL WELL ~~XXXXXXXX~~ ~~XXXXXXXX~~ ~~XXXXXXXX~~

El. 696.8

CROSS OUT THREE OF THE ABOVE
 WELL RECORD

DATE OF Acid shot 9/13/33 NUMBER OF GALLONS 1000

1st 24 HOURS PRODUCTION	240 Bbls., natural	BARRELS OR FEET
2nd " " "		" " "
3rd " " "		" " "
4th " " "		" " "
5th " " "		" " "

SAND AND CASING

CASING SIZE	WEIGHT	CASING Feet Inches	SAND Name and Nature	TOP	BOTTOM	TOP PAY	BOTTOM PAY	SALT WATER
10"		296	Stray	1115	1155			
8 1/4"		872	Marshall	1155	1308			
6-5/8"		1414	Red Rock	1308	1390			
5-3/16"		3526	Berea	2399	2430			
			Antrim	2470	2890			
			Traverse	2890				
			Dundee	3518		3547	3551	
						3569	3575	
			Total Depth		3576			

REMARKS No results from acid treatment. Show of oil 3005'