



---

Legacy Scout Tickets from Pure Oil Company

---

8-20-2021

## MGRRE\_PureOilScoutTickets\_Phillips, Louis D et a\_1\_21081112880000

MGRRE

*Western Michigan University*

Follow this and additional works at: <https://scholarworks.wmich.edu/pure>



Part of the Geology Commons

---

### WMU ScholarWorks Citation

MGRRE, "MGRRE\_PureOilScoutTickets\_Phillips, Louis D et a\_1\_21081112880000" (2021). *Legacy Scout Tickets from Pure Oil Company*. 4448.

<https://scholarworks.wmich.edu/pure/4448>

This Document is brought to you for free and open access via ScholarWorks at WMU. It has been accepted for inclusion in Legacy Scout Tickets from Pure Oil Company by an authorized administrator of ScholarWorks at WMU. See the National Digital Catalogue - Science Base Catalogue for more collections submitted by MGRRE.



---

**MGRRE\_PureOilScoutTickets\_Phillips, Louis D et al\_1\_21081112880000**

API 21081112880000

Permit Number 11288

Lease Name Phillips, Louis D et al

Well Number 1

County Kent

Township 10N

Range 10W

Section 3

2021 DEQ or Pure co\_name Michigan Consolidated Gas Company

Pure Number 576

Latitude 43.28484

Longitude -85.49043

THE PURE OIL COMPANY

Date December 28, 1944 <sup>Corrected</sup> LOCATION REPORT

A.F.E. No. \_\_\_\_\_

Division Mich. Producing District \_\_\_\_\_ Lease Louis D. Phillips, et al

Acres \_\_\_\_\_ Lease No. \_\_\_\_\_ Elevation \_\_\_\_\_ Well No. 1 (Serial No. 576)

Quadrangle NW-NW-SW Sec. 3 Twp. 10 N Rge. 10 W Twp. Nelson

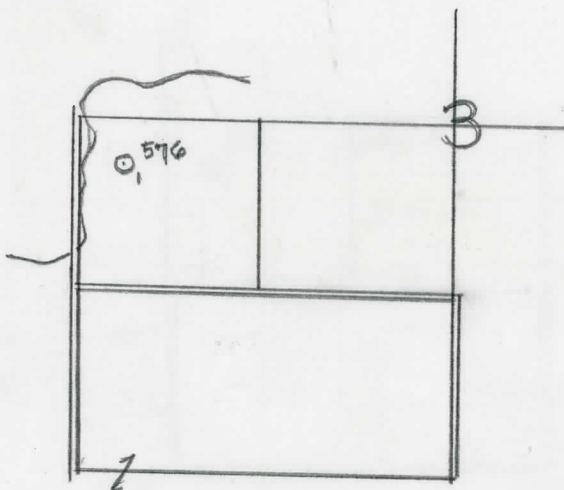
Survey \_\_\_\_\_ County Kent State Michigan

Operator Michigan Consolidated Gas Co. Map Nelson Township, Kent County

990	990	Feet from North Line of Lease
990	990	" " East " " "
		" " South " " "
		" " West " " "
330	330	Feet from North Line of Section <sup>1/4</sup>
		" " East " " "
		" " South " " "
330	330	" " West " " "

LEGEND

- ☀ Gas Well
- Oil Well
- ☀ Gas - Distillate Well
- ∅ or ○ Dry Hole
- Dry Showing Oil
- Location
- ☀ Dry Showing Gas
- ⊗ Abandoned Location
- ☀ or ☀ Abandoned Gas Well
- or ● Abandoned Oil Well
- or ○ Input Well



Location correction

Remarks: Location correction. Scale \_\_\_\_\_

Submitted by RN Civil Engineer Approved by \_\_\_\_\_ Division Manager

Approved by \_\_\_\_\_ Vice-President - General Manager

Date December 20, 1944 LOCATION REPORT A.F.E. No. Louis D. Phillips et al  
 Division Michigan Producing District \_\_\_\_\_ Lease Louis D. Phillips, et al

Acres \_\_\_\_\_ Lease No. \_\_\_\_\_ Elevation \_\_\_\_\_ Well No. 1 (Serial No. 576)  
 Quadrangle NW-NW-SE Sec. 3 Twp. 10 N Rge. 10 W Twp. Nelson

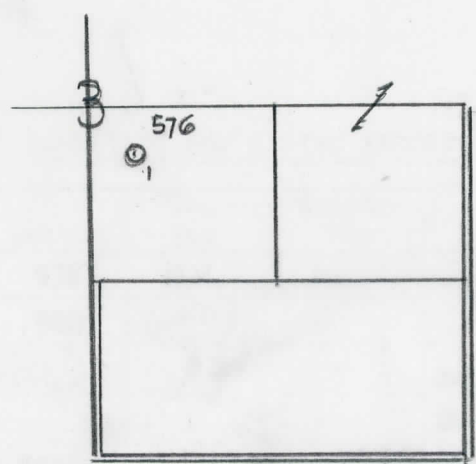
Survey \_\_\_\_\_ County Kent State Michigan  
 Operator Mich. Consol. Gas Co. Map Nelson Township, Kent County

990 990 Feet from North Line of Lease  
990 990 " " East " " "  
 " " South " " "  
 " " West " " "  
330 330 Feet from North Line of Section 1/4  
 " " East " " "  
 " " South " " "  
330 330 " " West " " "

LEGEND

- Location
- ☀ Gas Well
- Oil Well
- ☀ Gas - Distillate Well
- ∅ or ○ Dry Hole
- Dry Showing Oil
- ☀ Dry Showing Gas
- ⊗ Abandoned Location
- ☀ or ☀ Abandoned Gas Well
- or ● Abandoned Oil Well
- ⊗ or ⊗ Input Well

*main*



Remarks: \_\_\_\_\_ Scale \_\_\_\_\_

Submitted by RN Civil Engineer Approved by \_\_\_\_\_ Division Manager  
 Approved by \_\_\_\_\_ Vice-President - General Manager

COMPLETION RECORD OF WELLS DRILLED BY OTHER OPERATORS

Michigan Producing Division

Date May 16, 1945 No. 576  
 State Mich. County Kent Twp. Nelson Sec. 3 Twp. 10 N Rge. 10 W  
 Well No. 1 (Serial No.) 576 Farm L. D. Phillips, et al Acres  
 Operator Mich. Consolidated Gas Co. Information secured ~~XXXX~~ By Scouting Department  
 Date well started 2-16-45 Date well completed 5-9-45 Elevation 889.5

PRODUCTION BOARD

1st 24 hours natural Dry Hole  
 2nd 24 hours natural  
 Date of shot No. of quarts From To From to  
 Date of acid shot No. of gallons  
 1st 24 hours after acid shot  
 2nd 24 hours after acid shot

FORMATION AND CASING RECORD

Formation	Top	Bottom	Top Pay	Bottom Pay	Remarks	Casing	
						Size	Set at
Brown Dolomite	925	936	SLM.	(-35)		10"	459
Mich. Stray	949	980	(-59)			8-1/4"	712
Marshall	1026	(-136)			Salt water (300 ft. in 3/4 hr.) 970-74.	(-82)	
Total Depth		1036	(-146)		Inc. salt water 1026-1036. (-136)		

Remarks

Signed

D. C. Shackelford