



Western Michigan University
ScholarWorks at WMU

Legacy Scout Tickets from Pure Oil Company

8-20-2021

**MGRRE_PureOilScoutTickets_M G S C aka Larson-Dunn
95_618_21035092350000**

MGRRE
Western Michigan University

Follow this and additional works at: <https://scholarworks.wmich.edu/pure>



Part of the Geology Commons

WMU ScholarWorks Citation

MGRRE, "MGRRE_PureOilScoutTickets_M G S C aka Larson-Dunn 95_618_21035092350000" (2021).
Legacy Scout Tickets from Pure Oil Company. 1348.
<https://scholarworks.wmich.edu/pure/1348>

This Document is brought to you for free and open access via ScholarWorks at WMU. It has been accepted for inclusion in Legacy Scout Tickets from Pure Oil Company by an authorized administrator of ScholarWorks at WMU. See the National Digital Catalogue - Science Base Catalogue for more collections submitted by MGRRE.



**MGRRE_PureOilScoutTickets_M G S C aka Larson-Dunn
95_618_21035092350000**

API 21035092350000

Permit Number 9235

Lease Name M G S C aka Larson-Dunn 95

Well Number 618

County Clare

Township 20N

Range 06W

Section 18

2021 DEQ or Pure co_name Consumers Energy Company

Pure Number 418

Latitude 44.120609

Longitude -85.0729875

THE PURE OIL COMPANY

Date November 30, 1945 Corrected LOCATION REPORT A.F.E. No. _____

Division Mich. Producing District _____ Lease Larson-Dunn

Acres _____ Lease No. _____ Elevation _____ Well No. 95 (Serial No. 418)

Quadrangle C SE¹ Sec. 18 Twp. 20 N Rge. 6 W Twp. Winterfield

Survey _____ County Clare State Michigan

Operator Consumers Power Company Map Winterfield Township, Clare County

____ Feet from North Line of Lease
 ____ " " East " " "
 ____ " " South " " "
 ____ " " West " " "
 ____ Feet from North Line of Section
 ____ " " East " " "
 ____ " " South " " "
 ____ " " West " " "

LEGEND

- Location
- ☀ Gas Well
- Oil Well
- ☀ Gas - Distillate Well
- ∅ or ○ Dry Hole
- Dry Showing Oil
- ☀ Dry Showing Gas
- ⊗ Abandoned Location
- ☀ or ☀ Abandoned Gas Well
- or ● Abandoned Oil Well
- or ○ Input Well

See plat - Clare #418.



Remarks: Change of operator. Scale _____

Submitted by Scouting Dept. Approved by _____ Division Manager

Approved by _____ Vice-President - General Manager

Serial No. 418

Date November 26, 1941

LOCATION REPORT

A.F.E. No.

Division Mich. Producing

District

Larson - Dunn
Larson-Dunn

Acres Lease No. Elevation Well No. 95⁹⁵

Quadrangle C SE^{CSE} Lot Sec. 18 Twp. 20 N Rge. 6 W Twp. Winterfield

Survey County Clare State Michigan

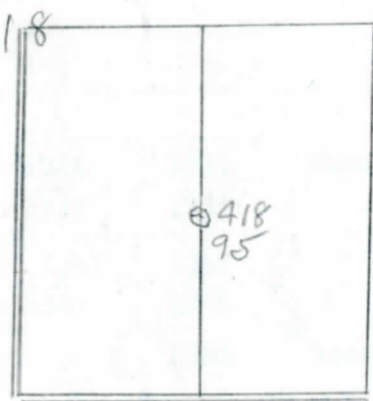
Operator Taggart Brothers Company Map Winterfield Township, Clare County

		Feet North of South Line of Lease
"	East	" West " " "
1320	1320	" South " North " " "
1320	1320	" West " East " " "
1320	1320	Feet North of South Line of Section
1320	1320	" East " West " " "
"	South	" North " " "
"	West	" East " " "

Lead

LEGEND

- Location
- ☉ Gas Well
- Oil Well
- ⊙ or ○ Dry Hole
- Dry Showing Oil
- ☉ Dry Showing Gas
- ⊙ Abandoned Location
- ☉ or ☉ Abandoned Gas Well
- or ● Abandoned Oil Well



Scale _____

Remarks: _____

Submitted by W Civil Engineer

Approved by _____ Division Manager

Approved by _____ Vice-President - General Manager

Date **January 21, 1942** No. **418**
 State **Mich.** County **Clare** Twp. **Winterfield** Sec. **18** Twp. **20 N** Rge. **6 W**
 Well No. **95** (Serial No. **418**) Farm **Larson-Dunn** Acres _____
 Operator **Taggart Brothers Company** Information secured **By** **Scouting Department**
 Date well started **12-19-41** Date well completed **1-15-42** Elevation **1100.8**

PRODUCTION RECORD

1st 24 hours natural **2,520,000 Cu. Ft.**
 2nd 24 hours natural _____
 Date of shot _____ No. of quarts _____ From _____ to _____ From _____ to _____
 Date of acid _____ No. of gallons _____
 1st 24 hours after acid shot _____
 2nd 24 hours after acid shot _____

FORMATION AND CASING RECORD

Formation	Top	Bottom	Top Pay	Bottom Pay	Remarks	Casing	
						Size	Set at
Brown Dolomite	1185					8-1/4"	350
Stray	1320		1324	1325	Show gas.	5-3/16"	1323
			1335	1337			
			1347	1349			
			1360	1361			
				1366	Water.		
Total Depth		1366					
Plugged back:		1361					

Remarks _____

Signed **D. C. Shackelford**