



Western Michigan University
ScholarWorks at WMU

Legacy Scout Tickets from Pure Oil Company

8-20-2021

**MGRRE_PureOilScoutTickets_Van Horn, S J et
al_3_21035054730000**

MGRRE
Western Michigan University

Follow this and additional works at: <https://scholarworks.wmich.edu/pure>



Part of the Geology Commons

WMU ScholarWorks Citation

MGRRE, "MGRRE_PureOilScoutTickets_Van Horn, S J et al_3_21035054730000" (2021). *Legacy Scout Tickets from Pure Oil Company*. 1122.
<https://scholarworks.wmich.edu/pure/1122>

This Document is brought to you for free and open access via ScholarWorks at WMU. It has been accepted for inclusion in Legacy Scout Tickets from Pure Oil Company by an authorized administrator of ScholarWorks at WMU. See the National Digital Catalogue - Science Base Catalogue for more collections submitted by MGRRE.



MGRRE_PureOilScoutTickets_Van Horn, S J et al_3_21035054730000

API 21035054730000

Permit Number 5473

Lease Name Van Horn, S J et al

Well Number 3

County Clare

Township 19N

Range 06W

Section 34

2021 DEQ or Pure co_name Daily Crude Oil Company The

Pure Number 109

Latitude 43.99044

Longitude -85.02458

The Pure Oil Company
THE PURE OIL COMPANY
COMPLETION RECORD OF WELLS DRILLED BY OTHER OPERATORS

DATE October 13, 1938

LOCATION REPORT

No. 109

STATE Michigan

COUNTY Clare

DIST. Redding
TWP. Redding

SEC. 34

TOWN 19 N

RANGE 6 W

WELL No. 3 (SERIAL No. 109) FARM

PROR. S. J. Van Horn, et al

ACRES

NAME OF STREAM OR WATERS

QUADRANGLE NE-SW-SW
NE SW SW

OPERATOR Daily Crude Oil Company

Map Redding Township, Clare County

33330 Feet from North Line of Farm

Daily Crude Oil Co.

Redding - Clare Co

33330 " " East " " "

" " South " " "

" " West " " "

Feet from North Line of Section

" " East " " "

990990 " " South " " "

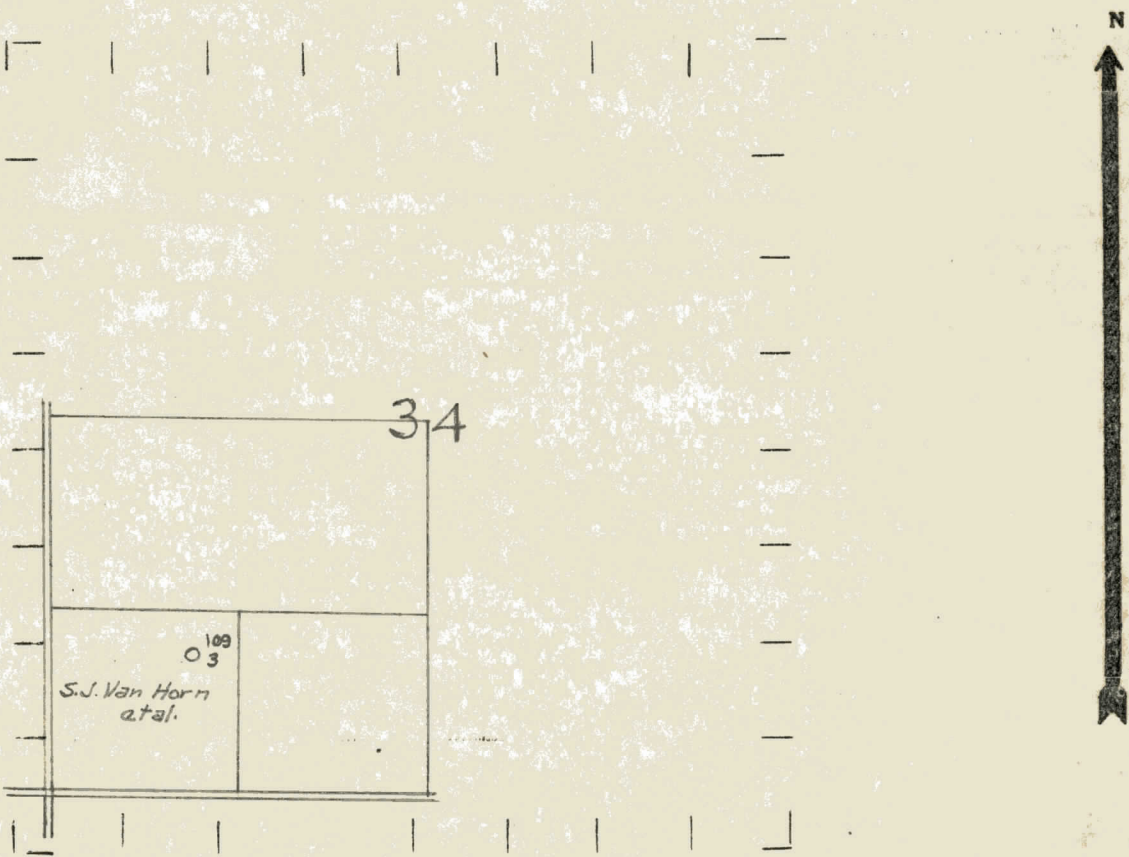
990990 " " West " " "

LEGEND

- LOCATION
- ⊕ DRILLING
- ☀ GAS WELL
- OIL WELL
- ⦿ SMALL OIL WELL
- ⊙ DRY HOLE
- ⦿ DRY SHOWING OIL
- ☀ DRY SHOWING GAS
- ⊙ ABANDONED LOCATION
- ☀ ABANDONED GAS WELL
- ⦿ ABANDONED OIL WELL

*450
Sp 10-10-38
10"-100"*

NOTE: Below make tracing from map, (when no map is obtainable make sketch) showing farm, center of section, this location with measurements and also wells, dry holes, or other locations in the vicinity of this location.



REMARKS:

SIGNED

Superintendent or Foreman.

Michigan Producing Division

Date **November 17, 1938** No. **109**
 State **Mich.** County **Clare** Twp. **Redding** Sec. **34** Twp. **19 N** Rge. **6 W**
 Well No. **5** (Serial No.) Farm **S. J. Van Horn, et al** Acres
 Operator **Daily Crude Oil Company** Information secured ~~from~~ **Scouting Department**
 Date well started **10-10-38** Date well completed **10-14-38** Elevation **1105.3**

PRODUCTION RECORD

1st 24 hours natural **Dry Hole**
 2nd 24 hours natural
 Date of shot No. of quarts From to From to
 Date of acid No. of gallons
 1st 24 hours after acid shot
 2nd 24 hours after acid shot

FORMATION AND CASING RECORD

Formation	Top	Bottom	Top Pay	Bottom Pay	Remarks	Casing	
						Size	Set at
Stray	1485					10"	100
Marshall	1583					6-5/8"	1760
Red Hook		1745				5-3/16"	3697
Antrim	2606						
Traverse	3294			3350	Small show oil		
Monroe	3928 ?		3928	3933	Salt water-also, oil, gas,		
Total Depth		3933					

Remarks **3922 1/2' C.F.M. equals 3922 1/2' S.L.M.**

Signed **D. C. Shackelford**