

소아에서 두부손상 이후 발생한 기저핵경색

조용재 · 김동석 · 최중언

= Abstract =

Post-Traumatic Basal Gangliar Ischemia in Children

Yong Jae Cho, M.D., Dong-Seok Kim, M.D., Joong Uhn Choi, M.D.

Department of Neurosurgery, College of Medicine, Yonsei University, Seoul, Korea

The authors reviewed the cases of 12 children with unilateral motor weakness after minor head injury who were treated between 1990 and 1996. Eight were boys and four were girls, and all were less than seven years old (range, 8 month to 6years) ; unilateral weakness developed immediately after an apparently minor head injury. Computed tomography and MR scanning disclosed an ischemic lesion at one side of the basal ganglia. Most children recovered. The mechanism by which this ischemic lesion develops at the basal ganglia is not known. In children, however the angle between the middle cerebral artery and lateral perforating vessels is more acute than in the adult, and we believe that after minor head injury, stretching and distorting the angle of these perforating branches may lead to ' unknown vessel change ', with a consequent decrease in local blood flow. The end result is an ischemic lesion in the basal ganglia.

KEY WORDS : Ischemic lesion · Basal ganglia · Children · Minor head injury.

서 론

대상 및 방법

1990 1996 7 12
(shearing force) 가 (Fig. 1, 2)
4 12 4
Subhash R 1993 4 2
, 2 가
. 1
1990 1996 7 7
5 , 3
12 가

2 SPECT
가
가
12 3
2
7
결 과
8 5 , 12
가 8 , 가 4
12 (Ta-
ble 1). 4
24 Grade 4

3 Grade 3
가
가
가 1 . 12
7, 5
(Table 1). 12



Fig. 1. Brain CT scan shows hypodense lesion in the Rt basal ganglia : the case of a four-year-old male child who suffered left hemiparesis after falling from his mother's lap.

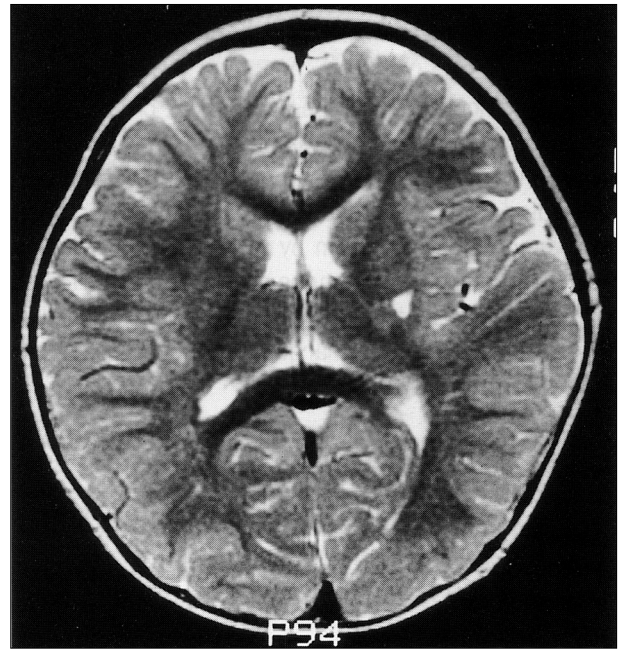


Fig. 2. Brain MR-T2 weighted image shows a signal change in the left basal ganglia : the case of a 4-year-old female child who suffered right hemiparesis after falling off a bicycle.

Table 1. Patient characteristics presenting with post-traumatic ischemia of the basal ganglia

Patient	Sex	Age	Lesion	Initial presentation	Hemiparesis	Facial weakness	Initial study
1	M	10/12yr	Lt	LOC	G4	-	CT
2	M	8/12yr	Rt	Hemiparesis	G4	-	CT
3	M	18/12yr	Lt	Hemiparesis	G4	-	CT, MR, SPECT
4	M	9/12yr	Lt	Seizure	G4	-	CT
5	M	5yr	Lt	Hemiparesis	G3	+	MR
6	M	4yr	Rt	Hemiparesis	G4	+	CT, MR, SPECT
7	M	3yr	Rt	Hemiparesis	G3	+	CT, MR
8	M	5yr	Rt	Dysarthria	G4	-	CT
9	F	2yr	Lt	Hemiparesis	G4	-	MRI
10	F	23/12yr	Lt	Hemiparesis	G3	-	MRI
11	F	22/12yr	Lt	Hemiparesis	G4	-	CT
12	F	4yr	Rt	Hemiparesis	G4	-	CT

LOC : loss of consciousness, Rt : right, Lt : left

Table 2. Timing of improvement in patient with post-traumatic ischemia of the basal ganglia

Onset of improvement	No. of Patient
2nd day	1
3rd day	1
5th day	6
7th day	1
12th day	2
15th day	2

5 12 6 2
가 2
SPECT 2

12 1

고찰

13) 가 가
7) 가 가
가 (acceleration/deceleration, inertia)
7) 가
가
7) 가

eral lenticulostriate artery) 가 (lat - medial lenticulostriate artery, ter -

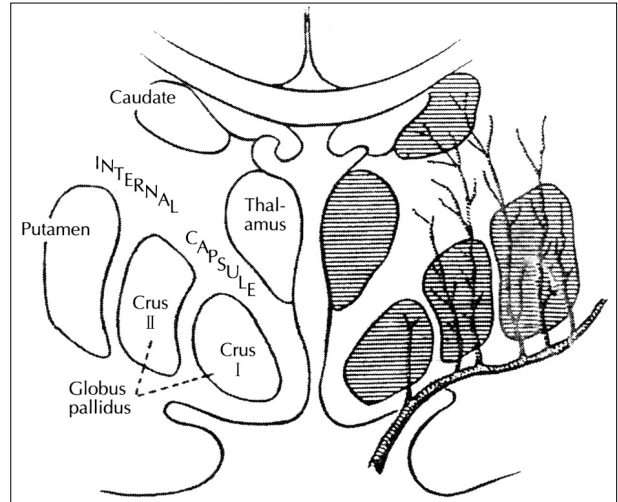


Fig. 3. Semi-diagrammatic representation of the arterial supply field of the proximal segment of the middle cerebral artery.

minimal branch of recurrent artery of Heubner), 가 (anterior thalamoperforating artery), (anterior & posterior choroidal artery)

14) 18 Duret 14), Charcot

3). Charcot 'artery of cerebral hemorrhage'

'lenticulostriate artery', 'artery of corpus striatum', 'striatal artery' 1)13)

가 (caudate head), (putamen), (globus pallidus), (anterior portion of internal capsule)

(Fig. 3)⁶⁾¹⁵⁾ (M1)

. Kodama, Suzuki 5 가

, 가 가

10) 가 가

(Fig. 4). 1920 Sh -

ellshear 가 (acute an -
gle) 가 (end artery)
acute angle
an -
terior perforated space , anterior perforated
space 가 (recurrent course) 가
(angle) (acute)

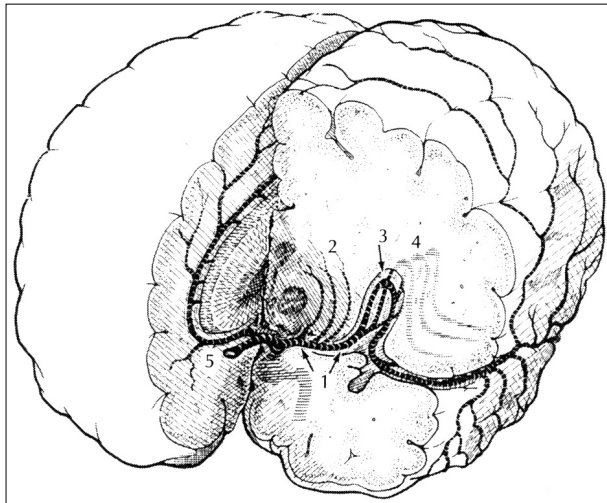


Fig. 4. Anatomic drawing of the middle cerebral artery(MCA) and its relationship to adjacent structures. The sylvian fissure has been exaggerated so that the MCA loop over the insula can be more clearly depicted. 1 : M1 (horizontal) segment. The genu is where the MCA curves upwards into the sylvian fissure ; 2 : Lateral lenticulostriate arteries ; 3 : Sylvian fissure ; 4 : MCA within the depths of the sylvian fissure ; 5 : Left and right anterior cerebral arteries.

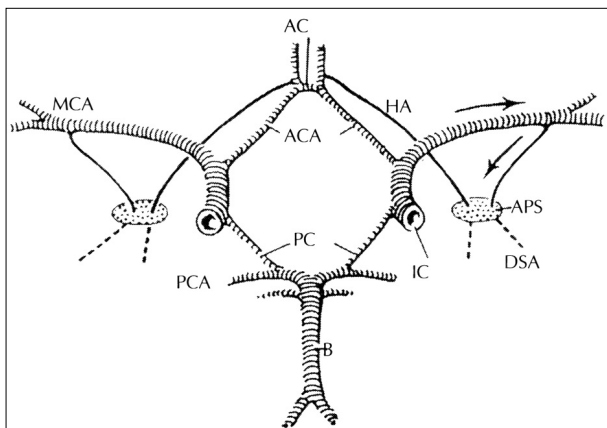


Fig. 5. Diagram of the circle of Willis. ACA, anterior cerebral artery ; AC, anterior communicating artery ; MCA, middle cerebral artery ; IC, internal carotid artery ; PC, posterior communicating artery ; HA, Heubner's artery ; DSA, distal striate artery ; PCA, posterior cerebral artery ; B, basilar artery, APS, anterior perforated substance. Arrows indicate the direction of blood flow.

가 (13)(14).
angle 가 가 (Fig. 5).
가 가
Subhash R 1993
(Fig. 4, 5)¹³⁾.

stretching distortion
(vasospasm)
13)
4
(internal capsule)
2) 가
(internal capsule)

가
ischemic penumbra
9)(12).
가
가
2)
결 론

7
12
1)
8 5 1
3

- 2)
- : 1997 2 20
 - : 1997 7 10

References

- 1) Abbie AA : *The morphology of the forebrain arteries, with special reference to the evolution of the basal ganglia.* *J Anat* 68 : 433-470, 1934
- 2) Fisher CM : *Pure motor hemiplegia of vascular origin.* *Arch Neurol* 13 : 30, 1965
- 3) Grand W : *Microsurgical anatomy of the proximal middle cerebral artery and the internal carotid bifurcation.* *Neurosurgery* 7 : 215-218, 1980
- 4) Jain KK : *Some observations of the anatomy of the middle cerebral artery.* *Can J Surg* 7 : 134-139, 1964
- 5) Kodama N, Suzuki J : *Cerebrovascular moyamoya disease. 3rd report-the study on the aging of the perforating branches and the possibility of collateral pathway (in Japanese, English abstr).* *Neurol Med Chir* 14 : 55-67, 1974
- 6) LH Herman, AZ Ostrowski : *Perforating branches of middle cerebral artery.* *J Anat* 88 : 34-39, 1977
- 7) Macpherson P, Teasdale E, Dharker S : *The significance of traumatic hematoma in the region of the basal ganglia.* *J Neurol Neurosurg Psychiatry* 49 : 29-34, 1986
- 8) Marshall LF, Gautille TH : *Large and small holes in the brain : Reversible or irreversible change in head injury.* *Acta Neurochir (suppl)* 51 : 300-301, 1990
- 9) Morawetz RB, Crowell RH : *Regional cerebral blood flow thresholds during cerebral ischemia.* *Fed Proc* 38 : 2493, 1979
- 10) Mosberg WH, Lindberg R : *Traumatic hemorrhage from the anterior choroidal artery.* *J Neurosurg* 16 : 209-21, 1959
- 11) Shellshear JL : *The basal arteries of the forebrain and their functional significance.* *J Anat* 55 : 27-55, 1920
- 12) Siesjo BK : *Pathophysiology and treatment of focal cerebral ischemia.* *J Neurosurg* 77 : 169, 1992
- 13) Subhash R, Radhey S : *Ischemic lesion in basal ganglia in children after minor head injury.* *J Neurosurg* 33 : 863-865, 1993
- 14) Umansky F, Gomes FB, Dujovny M : *The perforating branches of the middle cerebral artery. A microanatomical study.* *J Neurosurg* 62 : 261-268, 1985
- 15) Westberg G : *Arteries of the basal ganglia.* *Acta Radiol (Diagn)* 5 : 581-596, 1966