



SPRINGFIELD PRESERVATION AND REVITALIZATION

Restoration of Springfield Historic District

By Rory Hampson

Implications

Community members saw a need. I was walking the neighborhood one day and stopped to talk to a local resident out walking her dog. She was so kind and I could tell that she had seen a lot of the neighborhood change throughout her life by the way she talked about the importance of the work I was doing. She was outside to get fresh air amidst a pandemic and to walk her dog on a nice and sunny afternoon. This project is more than just a safety precaution for bike users, it's a way to restore the home-like feeling of the neighborhood when walking outside. Friends and family should be able to enjoy a nice stroll to the Main Street restaurants without worrying if their children will trip and fall on broken sidewalks.

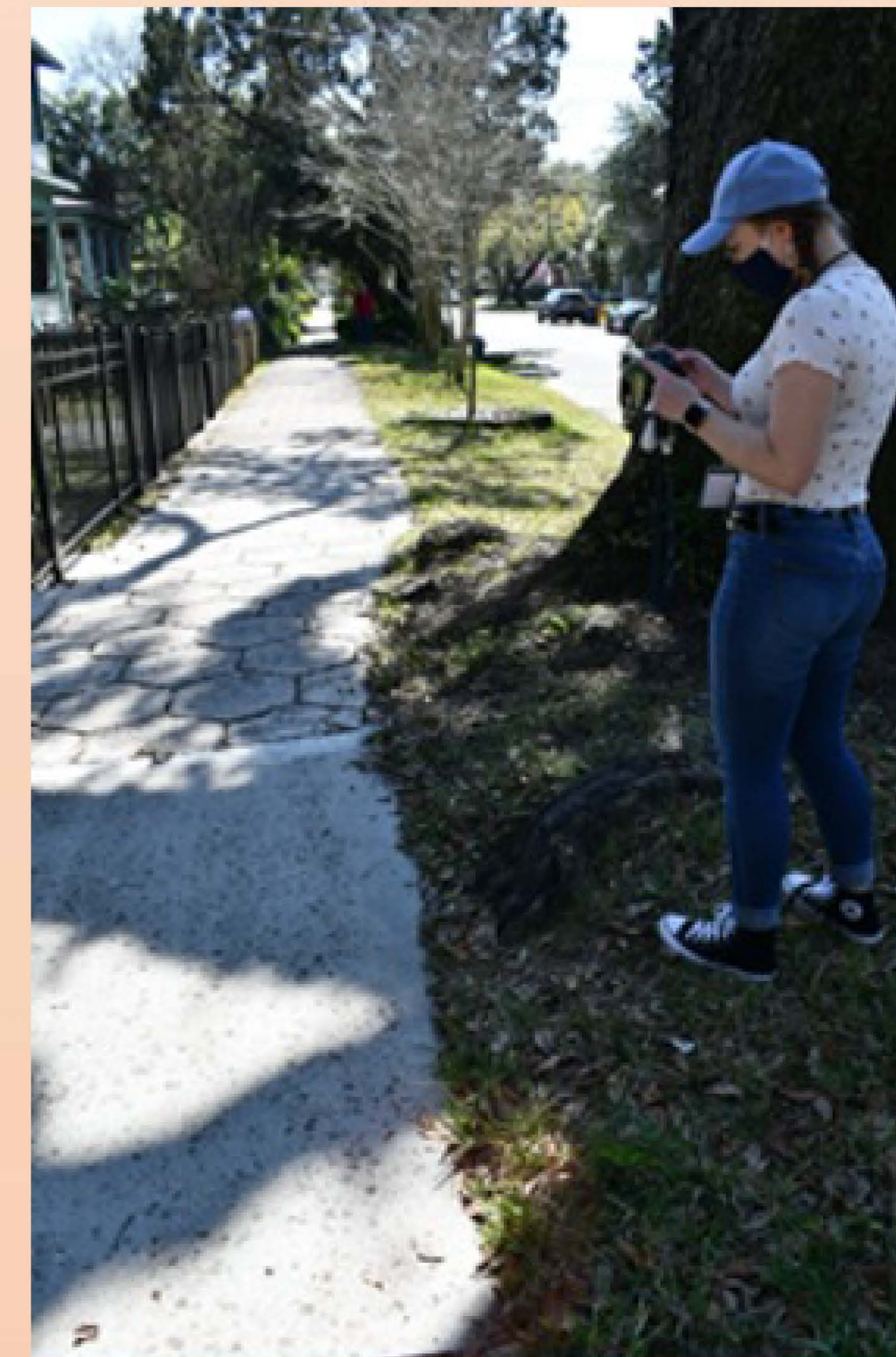
Project Summary

The purpose of this project was to walk the beloved historic Jacksonville neighborhood, Springfield, and notate which sidewalks were broken or otherwise needed repairs. This is critical for a small community such as Springfield as it is easily walkable for the residents and town travelers who come to tour the area. Broken sidewalks not only are incompliant with ADA guidelines but are unsafe for the general biker and walker, creating a key issue for community members. Rory Hampson was tasked with collecting and analyzing data to create a documentation of where the walkways that need fixing are in order to improve the redevelopment and restoration of the area.



Mapped out pin points with pictures of each type of broken sidewalk.

Rory in the field!

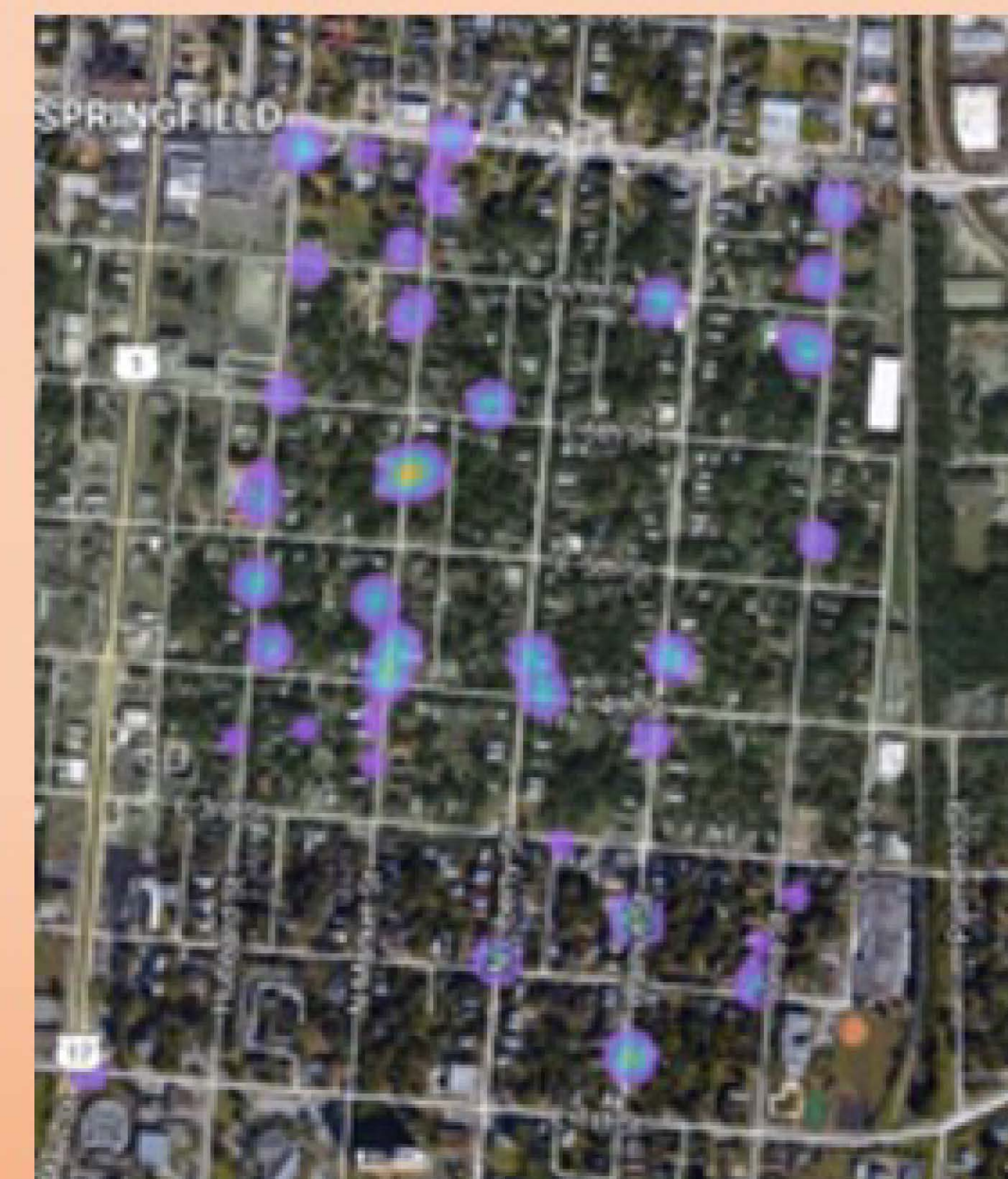


Acknowledgements

A special thanks to Kelly Rich, Aaron Glick, and Todd Hollinghead for assistance through SPAR on this project

Impact

Though the project is not yet complete, an entire quadrant of the neighborhood has been notated on a map utilizing Geographic Information Systems (GIS) to more easily and accurately depict the areas that need attention from local officials to address the need for redevelopment.



Quadrant 1 of Springfield mapped by Google Geo-Location feature in Google Photos. Shows which streets have a higher density of sidewalk damage.

Link to GIS

Scan me to see pictures of what the sidewalks in Springfield currently look like!

