

Kent Academic Repository

Full text document (pdf)

Citation for published version

Hopke, Alex, Brown, Alistair J.P., Hall, Rebecca A. and Wheeler, Robert T. (2018) Dynamic Fungal Cell Wall Architecture in Stress Adaptation and Immune Evasion. *Trends in Microbiology*, 26 (4). pp. 284-295. ISSN 0966-842X.

DOI

<https://doi.org/10.1016/j.tim.2018.01.007>

Link to record in KAR

<https://kar.kent.ac.uk/91792/>

Document Version

Author's Accepted Manuscript

Copyright & reuse

Content in the Kent Academic Repository is made available for research purposes. Unless otherwise stated all content is protected by copyright and in the absence of an open licence (eg Creative Commons), permissions for further reuse of content should be sought from the publisher, author or other copyright holder.

Versions of research

The version in the Kent Academic Repository may differ from the final published version.

Users are advised to check <http://kar.kent.ac.uk> for the status of the paper. **Users should always cite the published version of record.**

Enquiries

For any further enquiries regarding the licence status of this document, please contact:

researchsupport@kent.ac.uk

If you believe this document infringes copyright then please contact the KAR admin team with the take-down information provided at <http://kar.kent.ac.uk/contact.html>

Dynamic Fungal Cell Wall Architecture in Stress Adaptation and Immune Evasion

Alex Hopke,^{1,5} Alistair J.P. Brown,² Rebecca A. Hall,³ and Robert T. Wheeler^{1,4,*}

Deadly infections from opportunistic fungi have risen in frequency, largely because of the at-risk immunocompromised population created by advances in modern medicine and the HIV/AIDS pandemic. This review focuses on dynamics of the fungal polysaccharide cell wall, which plays an outsized role in fungal pathogenesis and therapy because it acts as both an environmental barrier and as the major interface with the host immune system. Human fungal pathogens use architectural strategies to mask epitopes from the host and prevent immune surveillance, and recent work elucidates how biotic and abiotic stresses present during infection can either block or enhance masking. The signaling components implicated in regulating fungal immune recognition can teach us how cell wall dynamics are controlled, and represent potential targets for interventions designed to boost or dampen immunity.

The Fungal Cell Wall, an Achilles Heel for a Destructive Class of Pathogens

Recent years have seen the emergence of fungi as a major threat to public health and food security. The success of modern medical advancements such as chemotherapy and organ transplantation extend patient life, but leave immune compromised patients susceptible to invasive infections by opportunistic fungal pathogens like *Candida albicans*, *Aspergillus fumigatus*, and *Cryptococcus neoformans*. These invasive fungal infections are accompanied by unacceptably high mortality rates, despite modern antifungal therapies. *Candida*, as an example, is the fourth most common cause of nosocomial bloodstream infections, thought to cause greater than 400 000 life-threatening infections annually [1]. Beyond being a threat to public health, fungi threaten agriculture, destroy crops, devastate amphibian and bat species, and are responsible for major extinctions caused by infectious disease [2]. Facing a global assault on plants, animals, and our own health, we must devise novel strategies to address fungal infections.

Opportunistic fungi, like other pathogens in this class, are able to thrive in challenging and rapidly changing environments by using multiple pathways for stress adaptation [3]. For *C. albicans*, these stresses include environmental challenges, drug exposure, and immune attack. Recent work has shown that the fungal responses to these stresses include altering their cell surfaces to enhance or limit immune recognition and responses, linking the two disparate fields of **cell wall integrity** (see [Glossary](#)) and immunity ([Figure 1](#), Key Figure). This new work highlights the translational importance of the **cell wall**, which serves as an effective drug target against both bacteria and fungi, and includes essential microbial components recognized by conserved innate immune pattern recognition receptors (**PRRs**). In this review, we summarize our current knowledge of fungal cell wall remodeling in response to the environment, with a focus on responses to stress relevant to infection. We also highlight the role of fungal cell wall remodeling in epitope masking.

Highlights

The fungal cell wall is a dynamic organelle that provides structure, protects fungal viability, and controls interactions with the host during infection.

Fungal cell wall architecture allows opportunistic fungal pathogens to evade innate immune recognition.

Immune attack and environmental stresses drive cell wall remodeling that unmask or covers up cell wall epitopes and alters immunogenicity.

Alternative carbon sources and acidic pH, present in vulvovaginal candidiasis infections, have distinct effects on epitope masking.

Neutrophil attack on *Candida albicans* hyphae triggers chitin deposition and enhanced recognition of cell wall β -glucan.

Altered innate immune recognition due to stress during infection may affect immune and disease dynamics

¹Molecular & Biomedical Sciences, University of Maine, Orono, ME, USA

²MRC Centre for Medical Mycology, Institute of Medical Sciences, University of Aberdeen, Foresterhill, Aberdeen, UK

³Institute of Microbiology and Infection, and School of Biosciences, University of Birmingham, Edgbaston, Birmingham, UK

⁴Graduate School of Biomedical Sciences and Engineering, University of Maine, Orono, ME, USA

⁵Current address: BioMEMS Resource Center, Division of Surgery, Innovation and Bioengineering, Department of Surgery, Massachusetts General Hospital, Shriners Burns Hospital, Harvard Medical School, Charlestown, MA, USA

*Correspondence: robert.wheeler1@maine.edu (R.T. Wheeler).

Key Figure

Stress-triggered Cell Wall Remodeling Affects Immune Recognition through Epitope (Un)masking

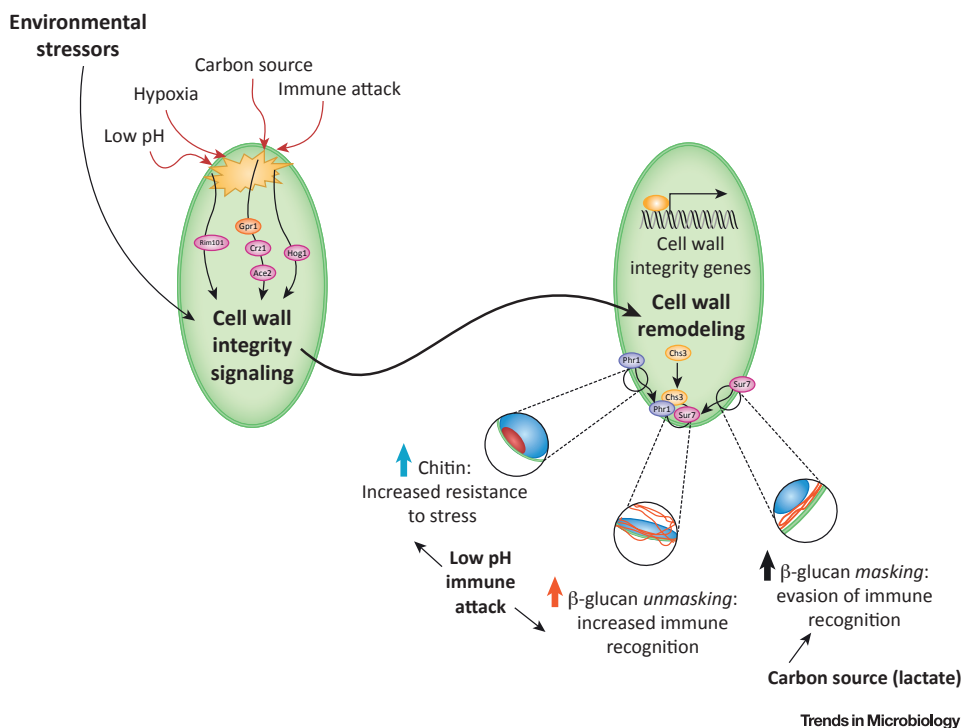


Figure 1. Environmental stresses, including pH, hypoxia, altered carbon sources, and immune attack, can trigger fungal response pathways that remodel the cell wall and alter PAMP availability. The roles of specific signaling proteins and pathways are detailed in Figures 3 and 4. The effects on the cell wall lead to enhanced exposure (in the cases of low pH or immune attack) or increased masking of cell wall β -glucan and chitin (in the case of environmental lactate). The roles of specific cell wall remodeling enzymes in response to immune attack are detailed in Figure 4. Changes in the availability of these PAMPs alter immune recognition and responses.

Adaptation to Stresses during Infection: Fungal ‘feng shui’

The cell wall is the primary fungal barrier against the external environment, playing a central role in the maintenance of cellular integrity. The cell wall is also the initial point of contact between the host and fungus, where it initiates immune responses via immune receptors. To sustain cell integrity in the face of environmental stresses, the cell wall must adapt to external challenges that could compromise cell wall structure or change how it triggers immune responses.

Normal Fungal Cell Wall Architecture and Stress Responses

Most pathogenic fungi have an inner cell wall layer of **chitin** and **β -glucan** which provides cellular integrity, but the outer layer composition of the cell wall varies among fungal species and can cover inner polysaccharides to prevent immune availability (Figure 2) [4]. In *C. albicans*, the outer layer consists of mannosylated glycoproteins connected to the inner layer by modified glycoposphatidylinositol (GPI) anchors and (1,6)- β -glucan linkages to the inner core of

Glossary

Cell wall: layers of linked proteins, lipids, and polysaccharides that lie exterior to the plasma membrane and create a porous barrier to interface with the environment.

Cell wall integrity: cell wall integrity under stress is maintained by physiological responses to disruptions in the cell wall that generally lead to strengthening of the cell wall and adapting to changing conditions.

Chitin: *N*-acetyl-glucosamine polymer present at low levels in fungal cell walls that provides crucial crosslinking strength to the cell wall. Chitin upregulation is a common method for fungi to reinforce their cell walls when under stress.

Chs2, 3, and 8: chitin synthases that respond to stresses and synthesize new chitin.

CLR: C-type lectin receptor. CLR are one class of innate immune PRR; they recognize polysaccharide ligands.

Crz1p: key protein in calcium sensing regulated by Gpr1 in the presence of lactate.

Dectin-1: a CLR that recognizes fungal β -glucan and mediates protective antifungal responses in innate immune phagocytes. Dectin-1 is required for antifungal immunity in mice and humans.

Fks1p: (1,3)- β -glucan synthase, encoded by the *FKS1* gene, conserved among fungi. This is the target for the echinocandin class of antifungal drugs.

β -Glucan: refers to (1 \rightarrow 3, 1 \rightarrow 6)- β -d-glucan, a highly crosslinked sugar in the fungal cell wall that provides strength and lies close to the plasma membrane.

Gpr1p: G protein-coupled receptor that senses the presence of lactate, an alternative carbon source.

Hog1p: a mitogen-activated protein (MAP) kinase that regulates cell wall integrity and osmolality sensing.

Nanostring profiling: a highly sensitive technique that directly detects and quantifies the copy number of selected RNA molecules.

NET: Neutrophil extracellular trap. A mix of DNA, hydrolases, antimicrobial peptides and myeloperoxidase released by neutrophils when attacking pathogens that cannot be engulfed.

β -glucan and chitin. However, the fungal cell wall is dynamic and varies between morphologies. For example, *C. albicans* hyphal cells have shorter, less dense mannan fibrils than yeast cells [5]. In *A. fumigatus*, conidia have a layer of α -glucan along with melanin and hydrophobic rodlets in their outer cell wall, while hyphae have α -glucan, galactomannan and galactosaminoglycan [4]. Similarly, *Histoplasma capsulatum* and other dimorphic fungi are covered with α -glucan during infection [4]. By contrast, *C. neoformans* has a thick outer capsule made largely of glucuronoxylomannan and galactoxylomannan attached to α -glucan [4].

Although we know that the cell wall is dynamic, we still understand little about the pathways that regulate its architecture in pathogenic fungi. In the model fungus *Saccharomyces cerevisiae*, the cell wall integrity signaling network is able to sense stresses and transduce them into both transcriptional and post-transcriptional changes that modulate cell wall structure [6,7]. This signaling network, which is evolutionarily conserved in *C. albicans* and other fungi, is initiated by stress sensors for pH, oxygen, carbon dioxide, shifts in carbon sources, osmotic shifts, reactive oxygen, nitrogen and sulphur species, temperature, and direct cell wall perturbation [8–14]. Important parts of this network include cell wall sensors, two-component signaling proteins, MAPK signaling components, protein kinase C, calcineurin, transcription factors, and cytosolic and cell wall effectors [15]. Fungi use these signals to maintain ‘feng shui’, rapidly and accurately remodeling the architecture and composition of the cell wall to minimize the impact of these stressors in an ever-changing environment.

Cell Wall Stresses Are Felt during Infection

A living host presents unique niches that require fungi to rapidly adapt their cell wall. Recent work has addressed how fungi respond to single and combinatorial stresses, and how cell wall integrity responses are activated *in vivo*. We know that changes in carbon availability, pH, oxygen availability, and immune attack are all encountered *in vivo* [4,16–18]. Rigorous *in vitro* experiments link these stresses to cell wall changes and altered immune recognition, and it is clear that immune attack also regulates cell wall remodeling and immune recognition *in vivo* [19–24].

In addition to natural environmental stresses, the echinocandin class of antifungal drugs imposes severe stress on the fungal cell wall by inhibiting β -glucan synthase. Exposure to echinocandins has been shown to induce numerous changes to the fungal cell wall, including lower β -glucan content, unmasking of cell wall β -glucan, and increased chitin synthesis and exposure [25–29]. Importantly, these responses are different *in vivo* and *in vitro*, indicating that signaling pathways may be activated or repressed by other cues within host niches [30].

The host environment challenges infecting organisms with multiple stressors at the same time. *In vitro* work on multiple concurrent stressors suggests that *C. albicans* uses microbial adaptive prediction, where exposure to an initial stress can influence survival when encountering a later stress [3]. While there is little discussion of the concept of adaptation prediction in *A. fumigatus* and *C. neoformans* in the literature, there is clear evidence that these fungal pathogens have evolved to integrate their responses to cell wall and other stresses. For example, multiple conserved pathways, including MAP kinase and protein kinase A signaling, coordinate the expression of cell wall genes with other stress genes in *A. fumigatus*, and signals other than cell wall stresses can trigger the cell wall integrity pathway and cell wall genes [31–33]. In *C. neoformans*, the transcription factor Rim101 regulates cell wall gene expression as well as pH sensing pathways, and the cell wall integrity pathway coordinates capsule homeostasis as well as cell wall regulation [34,35]. These data emphasize the limits of a reductionist approach and the necessity to study fungal physiology during infection.

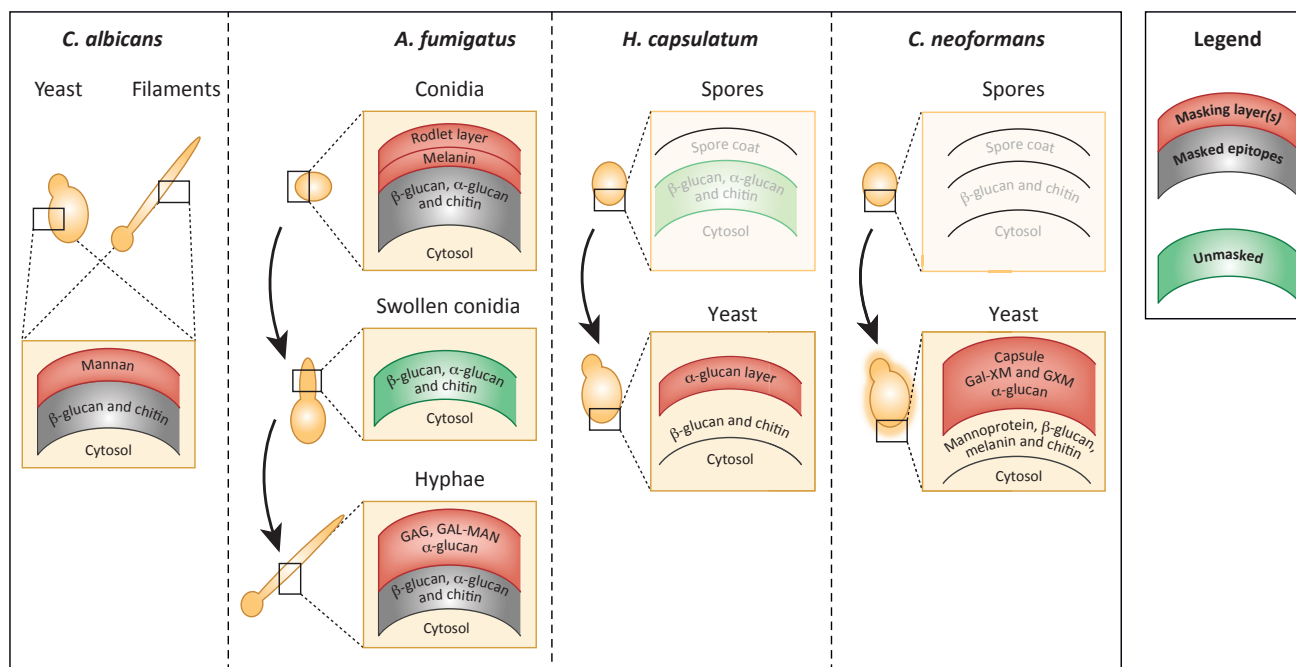
PAMP: pathogen-associated molecular pattern. These are nonself molecules, such as (1 \rightarrow 3,1 \rightarrow 6)- β -d-glucan, mannan, and lipopolysaccharide, that are conserved among classes of microbial pathogens.

Phr1p: transglycosylase that resides in the cell wall and is required for proper structure and cell wall integrity.

PRR: pattern-recognition receptor. PRRs are evolutionarily conserved innate immune receptors that recognize non-self molecules that are shared among classes of microbial pathogens. Classes of PRRs include Toll-like receptors and C-type lectin receptors.

Rim101p: master regulator of pH-sensing in many fungi, including *Candida* species.

RNAseq: high-throughput sequencing of RNA to determine the overall transcriptional profile of a group of cells.



Trends in Microbiology

Figure 2. Fungi Differentiate to Change Their Function and Form, and Their Cell Wall Architecture Is Designed to Mask Some Epitopes from Immune Recognition. The simplified cell wall architectures of select human pathogenic fungi are depicted schematically (adapted from [47]). The outer cell wall layers (shown in red) of *Candida*, *Aspergillus*, *Histoplasma*, and *Cryptococcus* forms are generally capable of preventing pattern recognition receptors (PRRs) from binding to ligands that are buried within inner layers of the cell wall (shown in gray to indicate masking). The polysaccharide and protein components of the outer layers differ among pathogenic fungi. In some cases, such as *A. fumigatus* swollen conidia, rapid growth leads to the temporary unmasking of underlying epitopes, but in most cases during *in vitro* growth only small proportions of the cell wall are sufficiently unstructured to allow binding of immune receptors to inner polysaccharide molecules (shown in green to indicate surface exposure). Morphological transitions (indicated by curved arrows) that occur during infection by *Aspergillus*, *Histoplasma*, and *Cryptococcus* are associated with cell wall changes that affect epitope exposure. Not much is known about the cell wall architecture of *H. capsulatum* or *C. neoformans* spores, so the layering is still unknown and these schematics are drawn in faded colors. Abbreviations: *C. albicans*, *Candida albicans*; *C. neoformans*, *Cryptococcus neoformans*.

Candida Stress Pathways Are Regulated during Infection and Are Important for Pathogenesis

For *C. albicans*, the importance of many cell wall genes for fungal viability in the host has been confirmed through deletion mutants. For instance, conditional repression of the major β -glucan synthase ***FKS1*** in a mouse model of disseminated candidiasis confirms the requirement for this enzyme *in vivo* [36]. ***PHR1***, which remodels cell wall β -glucan and has been demonstrated to be recruited to sites of neutrophil attack, is required for virulence during disseminated but not vulvovaginal candidiasis [37]. The finding that some cell wall genes are only required in some tissues argues for the niche-specificity of cell wall requirements and virulence. Further support for the idea that virulence is relative to infection route was generated using competition assays of barcoded mutants in the gut and intravenous infection models [38]. More recently, similar *in vivo* competition experiments have demonstrated an unexpected connection between cell wall epitope exposure and gastrointestinal fitness, suggesting that cell wall architecture is especially important for commensal success [39].

Tools such as **Nanostring profiling**, **RNAseq**, and cell intrinsic reporters have also enabled investigators to probe fungal physiology during infection [30,40–44]. Imaging of single-cell responses using fluorescent reporters has also been useful in both endpoint and intravital

studies using mice and zebrafish hosts [41,43,44]. Significantly, Nanostring profiling of fungal gene transcripts during drug treatment of disseminated candidiasis has demonstrated that the transcriptomic responses to caspofungin differ significantly between *in vivo* and *in vitro* conditions [30]. *In vivo* profiling has also revealed that transcripts related to the fungal cell wall and remodeling can differ between *C. albicans* strains and are impacted by the immune status of the host [27]. These studies emphasize that we now have the tools to translate *in vitro* findings into an understanding of cell wall remodeling during infection.

Pathogen Recognition and Epitope Masking: Wielding the Cell Wall as a Mask

The discovery that the fungal cell wall is a dynamic structure that undergoes significant remodeling during morphogenesis prompts the idea that it may be a moving immunological target, enabling pathogenic fungi to exert some control over the host's innate immune system. Recent work shows that pathogenic fungi can alter their cell wall structure in response to host cues in ways that could enable them to either evade and escape the immune system or to hyper-activate the immune system, resulting in damage to the mucosa. The following sections review our current knowledge on this topic, focusing on *C. albicans*.

Fungal Structures Are Recognized by PRRs

The innate immune system is constantly on alert for microbial pathogens. To achieve this, the host uses a vast array of PRRs, which are capable of recognizing distinct components not normally found in the body. Upon binding these foreign ligands, called pathogen-associated molecular patterns (**PAMPs**), PRRs initiate signaling cascades that activate downstream responses including phagocytosis, microbial killing mechanisms, and cytokine production.

Fungal cell wall PAMPs include chitin, mannan, and β -glucan, which are recognized by host innate immune PRRs that include multiple Toll-like receptors and C-type lectin receptors (**CLRs**) [45–47]. CLRs are particularly important for antifungal immunity, as evidenced by susceptibility to fungal infection in patients lacking effective CLR activity [48]. The cell wall, by controlling both fungal viability and host responses, therefore serves as a major focal point in determining the outcome of fungal infection.

Animal and Plant Pathogens Mask Epitopes from Immune Recognition

Manipulation of cell wall architecture to mask epitopes from host recognition is actually quite widespread and has been observed during fungal infection of plants and insects [49–52]. Importantly, epitope masking is also seen in multiple fungi capable of infecting humans (Figure 2).

In particular, fungi seem to go to great lengths to mask β -glucans. *H. capsulatum* masks its β -glucan with α -glucan, and *Paracoccidioides brasiliensis* actually converts its (1,3)- β -glucans to (1,3)- α -glucan in the host [53,54]. *A. fumigatus* also masks β -glucan, though this PAMP becomes exposed during germination or in hypoxic host environments [23,55]. This basal β -glucan masking in *Aspergillus* depends on cell wall architecture. In conidia, masking depends on the hydrophobin RodA, α -glucan, galactosaminogalactan, and the pigment protein PskP [56–59], while epitope masking in hyphae depends on galactosaminogalactan [58]. Interestingly, *A. fumigatus* RodA also appears important for blocking both **Dectin-1-** and Dectin-2-mediated host responses, presumably to (1,3)- β -glucan and α -mannan epitopes [57]. *Fonsecaea pedrosoi*, a major agent of chromoblastomycosis, masks β -glucan in the cell wall of its sclerotic cells with a chitin-like component [60]. *C. neoformans* masks PAMPs, including

β -glucan, behind a thick capsule [61]. *C. albicans* also masks the vast majority of its β -glucan from Dectin-1, with exposure limited to places with active cell wall growth or bud scars. It is generally thought that the outer layer of mannan and mannoproteins in the cell wall shields the inner β -glucan from Dectin-1 recognition [4]. These diverse outer cell wall layers likely reflect species-specific evolutionary solutions to deal with environmental stresses, but they all function to restrict host access to the inner cell wall.

Maintenance of β -glucan masking by *C. albicans* requires a complex and diverse set of pathways in fungi. Disruptions of mannanose structure, GPI anchor synthesis, phosphatidylserine biosynthesis, cell wall integrity signaling, β -glucan remodeling, and β -glucan synthesis have all been shown to result in β -glucan unmasking [29,62–68]. Atomic force microscopy demonstrates that β -glucan unmasking correlates with the increased surface roughness [69], while super-resolution microscopy has characterized the fine-scale architecture of caspofungin-induced β -glucan unmasking in *C. albicans* [70]. Importantly, in each of these cases, the exposure of β -glucan drives enhanced Dectin-1 recognition and inflammatory responses against fungi. While epitope unmasking clearly impacts interactions with host immunity, the cell wall dynamics involved in the maintenance of epitope masking are only beginning to be understood.

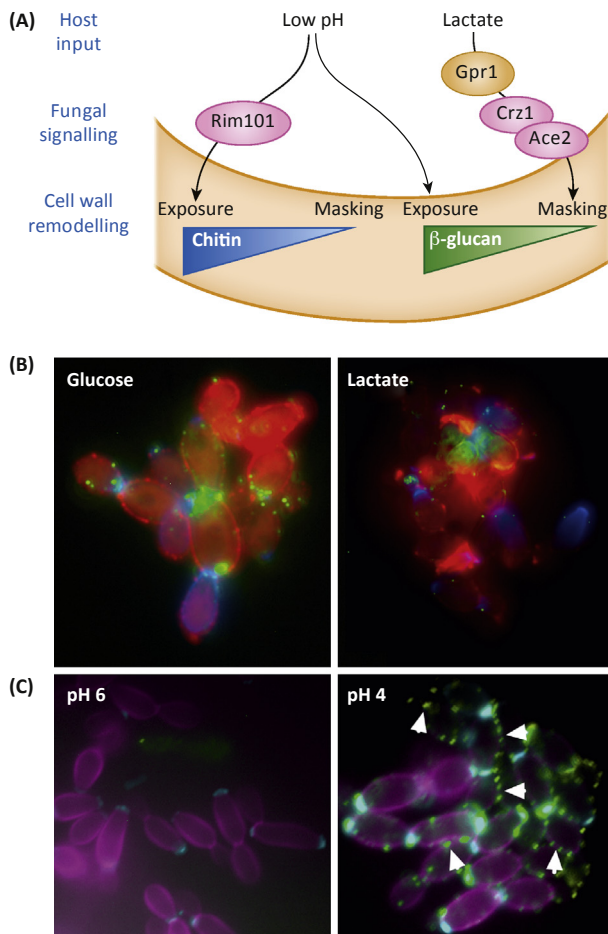
Biotic and Abiotic Stresses Cause Epitope Masking and Unmasking: Timely Wearing of the Mask

Adaptation to the multitude of environmental cues in the host induces morphogenesis and activates stress response pathways. However, host-derived conditions, antifungals, and host immune action have also been shown to induce considerable cell wall remodeling in fungi [71]. These changes in the fungal cell surface have profound effects on how the invading pathogen is perceived by the innate immune system. For instance, growth in the host triggers differentiation of *Histoplasma capsulatum* and stimulates deposition of the immunologically silent polysaccharide α -glucan on top of inflammatory β -glucan, thereby limiting inflammatory immune responses [54,72]. Three recent studies in *C. albicans* now shed light on other ways in which fungal adaptation to the host niche influences the innate immune response.

Acidic pH Enhances Glucan Unmasking

One key parameter *C. albicans* experiences during colonisation of the vaginal mucosa is low mucosal pH, with the vaginal mucosa being between pH 4 and 5, depending on age, ethnic origin, and position in the menstrual cycle [73]. Investigation of the effect of pH adaptation on *C. albicans* identified that exposure to acidic environments induces the exposure of β -glucan and chitin, two cell wall carbohydrate PAMPs which are normally buried beneath the mannan fibrils [24] (Figure 3). This exposure of underlying cell wall carbohydrates has been termed cell wall unmasking [29]. Both chitin and β -glucan are recognized by the innate immune system [74,75], and *C. albicans* cells that have adapted to acidic conditions elicited a strong proinflammatory innate immune response, and enhanced neutrophil recruitment [24], immune responses characteristic of genital thrush.

Currently, the precise structural rearrangements that result in this cell wall unmasking are unknown. Visualization of the ultrastructure of *C. albicans* revealed that the mannan fibril layer was reduced upon adaptation to acidic conditions [24], which might indicate reduced mannan biosynthesis. Although the signaling mechanism regulating β -glucan unmasking remains to be elucidated, unmasking of chitin is regulated via the pH-dependent **Rim101** signaling cascade [24] (Figure 3). The Rim101 signaling cascade has been shown to be involved in the regulation of chitin exposure in other fungal pathogens [76], suggesting that this may be an evolutionarily conserved process.



Trends in Microbiology

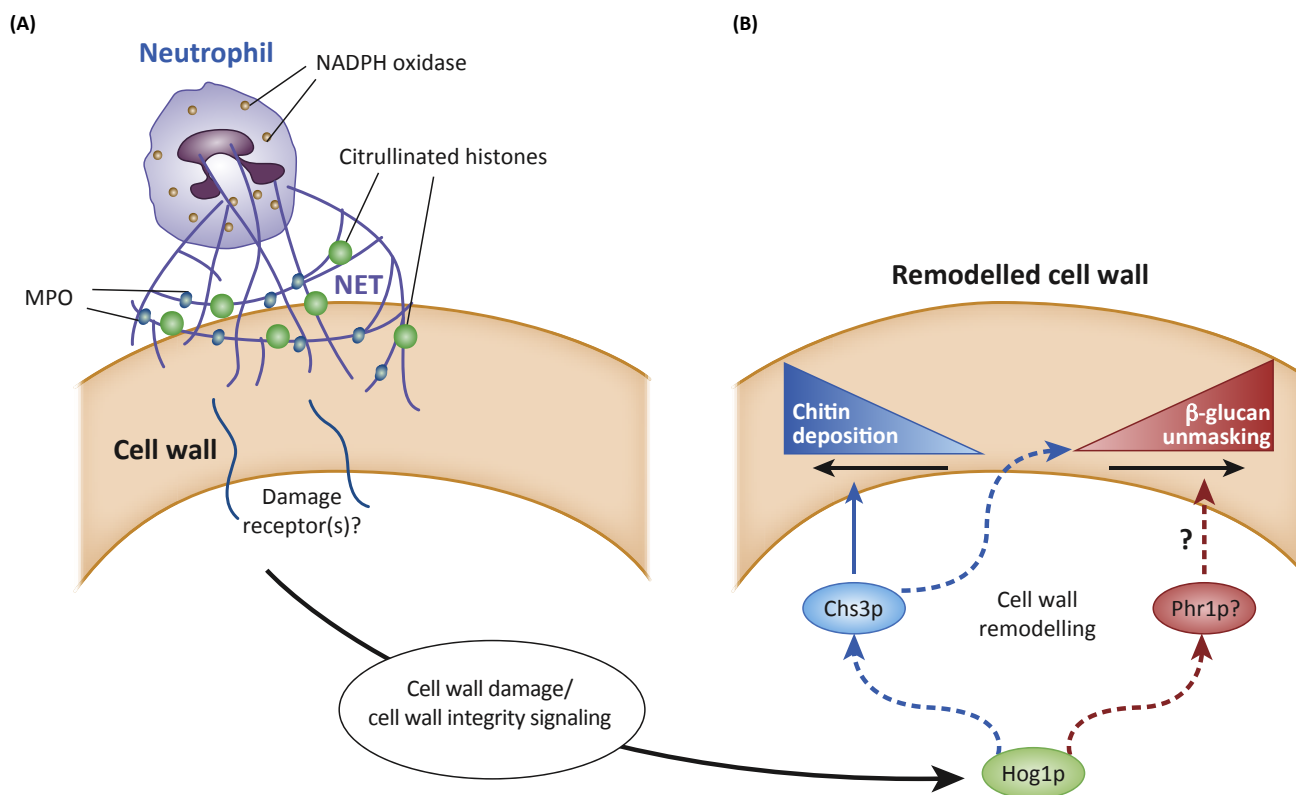
Figure 3. Abiotic Environmental Conditions Can Either Enhance PAMP Exposure or Lead to Greater Masking. (A) Schematic outlining how acidic pH and lactate signal *Candida albicans* to alter availability of β -glucan and chitin for immune recognition, based on [24] and [19]. (B) *C. albicans* cells exposed to glucose or lactate were stained for exposure of β -glucan (Fc-Dectin-1, green), mannan (Concanavalin A, red) and chitin (wheat germ agglutinin, blue). Image generated by Gabriela Avelar, Aberdeen Fungal Group. (C) *C. albicans* cells exposed to growth media buffered to pH 6 or pH 4 were stained for exposure of β -glucan (Fc-Dectin1, green) chitin (wheat germ agglutinin, cyan) and total chitin (Calcofluor white, magenta). Arrowheads indicate points of β -glucan exposure.

The impact of adaptation to acidic environments on cell wall remodeling in other pathogenic fungi has not been studied in detail to date. However, activation of cell wall salvage pathways in other fungi in response to various stress conditions also induces chitin deposition. This, in conjunction with the widely exploited fungal Rim101/PacC signaling pathway, suggests that other fungi may modulate chitin in response to environmental pH in a similar manner. As the mechanism underlying β -glucan exposure in response to environmental pH is still to be elucidated, it is hard to extrapolate whether mechanistic aspects of this phenomenon are conserved in other pathogenic fungi. However, exploration of pH-dependent β -glucan exposure in other *Candida* species suggests that this phenomenon is species specific, with only *C. albicans* and *Candida tropicalis* exposing β -glucan at lower pH [24].

Lactate Stimulates Enhanced Glucan Masking

By contrast, it has become clear that host inputs can also stimulate epitope masking. This discovery emerged from the observation that growth of *C. albicans* cells on carbon sources such as amino, fatty, or carboxylic acids, rather than sugars, leads to changes in their cell wall architecture and elasticity [71,77] which affect host immune responses [21]. Further investigation revealed that *C. albicans* cells trigger masking of the PAMP β -glucan at their cell surface in response to physiological levels of lactate, generated either by host or bacterial cells [19] (Figure 3). This lactate-induced β -glucan masking correlates with a reduction in neutrophil recruitment and an attenuation of inflammatory responses [19]. No doubt these effects contribute to the impact of carbon source adaptation upon the virulence of *C. albicans* during systemic and mucosal infection [71].

Lactate-induced β -glucan masking is mediated by a specific signaling pathway that appears to have recruited key components from other well-characterized signaling pathways. Lactate is detected by the receptor, **Gpr1p** [19], which lies upstream of the cyclic AMP-protein kinase A pathway that activates hyphal development [78] (Figure 3). The lactate signal is then transduced to the transcription factor **Crz1p** [19]. Crz1p, which regulates cell wall remodeling, also



Trends in Microbiology

Figure 4. Immune-mediated Attack of Fungal Hyphae Triggers Epitope Exposure. (A) Neutrophil attack through extracellular trap (NET) formation, including activity of phagocyte oxidase, myeloperoxidase (MPO), and reactive oxygen species (ROS) causes cell wall protein damage and provokes stress responses. (B) Cell wall remodeling triggered by NET attack includes localized Chs3p-mediated chitin deposition and enhanced β -glucan exposure. Unmasking of β -glucan is reduced or abolished in the absence of Hog1p or Chs3p activity. The Phr1p transglycosyltransferase localizes to sites of neutrophil attack and may actively remodel β -glucan in the cell wall. Indirect effects are indicated by lines with dotted outlines. Schematic based on [22].

responds to calcium ions via calcineurin signaling [79]. The mechanisms by which Gpr1p regulates Crz1p activity, and by which Crz1p drives β -glucan masking, are under investigation.

These findings in *C. albicans* have not yet been followed by work in other pathogenic fungi, but there are clear connections between carbon utilization and the cell wall in *Aspergillus fumigatus*. In this fungus, lowering the glucose concentration of the growth media to mimic the lung environment results in reduced cell wall β -glucan levels. This reduced β -glucan renders the fungus less susceptible to echinocandins, suggesting that environmental adaptation to carbon source may regulate therapeutic efficacy [20].

Immune Attack Triggers β -Glucan Unmasking

Clearly, *C. albicans* cells can tune the exposure of key epitopes at their cell surface to specific signals in host microenvironments. Interestingly, β -glucan becomes unmasked naturally over the course of disseminated *C. albicans* infection *in vivo* [29]. Recent work demonstrates that this PAMP unmasking is an active fungal response to attack from host neutrophils. Intriguingly, the fungal response also includes the deposition of chitin, which colocalizes with β -glucan unmasking [22] (Figure 4). As expected, this altered pattern recognition following neutrophil extracellular trap (NET)-mediated cell wall changes enhances the subsequent responses of macrophages to damaged fungi. Importantly, neutrophils are required for the time-dependent unmasking of β -glucan *in vivo*, suggesting that these cell wall integrity pathways responding to immune attack *in vitro* are active during infection [22].

The signaling and machinery involved in this fungal response have been partially elucidated (Figure 4). Chitin deposition and β -glucan unmasking are both regulated by **Hog1p** signaling. Chitin synthase 3 (**Chs3p**) localizes to attack sites and is responsible for the majority of the chitin deposition [22]. By contrast, the stress-activated synthases **Chs2p** and **Chs8p** are not required for this immune-triggered remodeling, highlighting differences in responses to abiotic and biotic stress [80]. Two other proteins associated with cellular integrity and cell wall architecture, Phr1p and Sur7p, are recruited to immune attack sites with unique temporal dynamics, which suggests that there is a well-choreographed remodeling response to host immune action. These experiments thus give us a glimpse of key immune and cell wall integrity processes that are likely to act following immune attack during infection, and prompt further questions about whether immune cells trigger similar changes in other pathogenic fungi.

Concluding Remarks

Despite the foundation of knowledge outlined above, the role of fungal cell wall remodeling in adapting to the complex host environment and interactions with immunity remains poorly understood (see Outstanding Questions). Unmasking epitopes could be beneficial to the host, as it subverts attempts at immune evasion and enhances host responses directed against the pathogen. This appears to be the case for β -glucan [19,22,24,39,68] and chitin [27,81]. Given that so many types of fungal pathogens mask β -glucan and other epitopes, there is a strong argument that blocking this masking benefits the host. However, it is also possible that, in other host contexts, dynamic fungal cell wall remodeling could instead directly benefit the pathogen by reinforcing the cell wall [22,28,82], exacerbating immunopathology [22,25,83–88], or affecting sensitivity to antifungal agent [28].

Clearly, the fungal cell wall is a nexus of physiology, drug action, and immunity. Therefore, an understanding of how the fungal cell wall senses, responds, and remodels itself in response to stress can be leveraged on two fronts. First, this work will identify the fungal pathways critical for adapting and maintaining cell wall integrity during interactions with the host and immunity,

Outstanding Questions

Can we enhance fungal clearance by targeting components of pathways that regulate epitope exposure?

Are stress-induced changes to the cell wall seen in murine infection and *in vitro* actually relevant for human infections? What is the end result when multiple stresses are present?

How relevant are the *C. albicans* stress-response pathways for other human fungal pathogens such as *Aspergillus fumigatus*, *Cryptococcus neoformans*, *Pneumocystis*, and dimorphic fungi?

Through which intermediates does stress sensing lead to changes in the cell wall?

How is cell wall remodeling spatially restricted to repair localized areas of damage?

What cell wall stresses are felt during infection in different tissues? Where and when are they felt? How are they sensed?

Fungal cell wall remodeling can have dramatic impacts on interactions with the host. Does epitope unmasking have beneficial or detrimental impacts on the host during infection?

Are responses to cell wall stresses dictated by adaptation to host niches of different fungal pathogens? Which fungal responses are conserved throughout the host, and which are niche-specific?

potentially yielding novel targets for broad-spectrum antifungal drugs. Second, understanding how dynamic cell wall remodeling, especially epitope unmasking, influences host immune responses to fungi will open the door to designing novel immunotherapeutic strategies for patients with fungal infections.

Acknowledgments

The authors wish to acknowledge the many other recent studies on cell wall dynamics and immune response that we did not have space to adequately include. The work was supported by funding from the following sources: Burroughs Wellcome Fund (RTW). AJPB was funded by the UK Biotechnology and Biological Research Council (BB/K017365/1), the UK Medical Research Council (MR/M026663/1); the Wellcome Trust (097377) and by the MRC Centre for Medical Mycology and the University of Aberdeen (MR/M026663/1).

References

- Brown, G.D. *et al.* (2012) Hidden killers: human fungal infections. *Sci. Transl. Med.* 4, 165rv13
- Fisher, M.C. *et al.* (2012) Emerging fungal threats to animal, plant and ecosystem health. *Nature* 484, 186–194
- Brown, A.J. *et al.* (2014) Stress adaptation in a pathogenic fungus. *J. Exp. Biol.* 217, 144–155
- Gow, N.A.R. *et al.* (2017) The fungal cell wall: structure, biosynthesis, and function. *Microbiol. Spectr.* Published May 19, 2017. <http://dx.doi.org/10.1128/microbiolspec.FUNK-0035-2016>
- Lowman, D.W. *et al.* (2014) Novel structural features in *Candida albicans* hyphal glucan provide a basis for differential innate immune recognition of hyphae versus yeast. *J. Biol. Chem.* 289, 3432–3443
- Levin, D.E. (2005) Cell wall integrity signaling in *Saccharomyces cerevisiae*. *Microbiol. Mol. Biol. Rev.* 69, 262–291
- Levin, D.E. (2011) Regulation of cell wall biogenesis in *Saccharomyces cerevisiae*: the cell wall integrity signaling pathway. *Genetics* 189, 1145–1175
- Alonso-Monge, R. *et al.* (2009) Fungi sensing environmental stress. *Clin. Microbiol. Infect.* 15 (Suppl. 1), 17–19
- Arana, D.M. *et al.* (2009) The role of the cell wall in fungal pathogenesis. *Microb. Biotechnol.* 2, 308–320
- Davis, D.A. (2009) How human pathogenic fungi sense and adapt to pH: the link to virulence. *Curr. Opin. Microbiol.* 12, 365–370
- Ernst, J.F. and Pla, J. (2011) Signaling the glycoshield: maintenance of the *Candida albicans* cell wall. *Int. J. Med. Microbiol.* 301, 378–383
- Komalapriya, C. *et al.* (2015) Integrative model of oxidative stress adaptation in the fungal pathogen *Candida albicans*. *PLoS One* 10, e0137750
- O'Meara, T.R. and Cowen, L.E. (2014) Hsp90-dependent regulatory circuitry controlling temperature-dependent fungal development and virulence. *Cell Microbiol.* 16, 473–481
- Smith, D.A. *et al.* (2010) Stress signalling to fungal stress-activated protein kinase pathways. *FEMS Microbiol. Lett.* 306, 1–8
- Dichtl, K. *et al.* (2016) Cell wall integrity signalling in human pathogenic fungi. *Cell Microbiol.* 18, 1228–1238
- Barelle, C.J. *et al.* (2006) Niche-specific regulation of central metabolic pathways in a fungal pathogen. *Cell Microbiol.* 8, 961–971
- Brown, A.J. *et al.* (2014) Metabolism impacts upon *Candida* immunogenicity and pathogenicity at multiple levels. *Trends Microbiol.* 22, 614–622
- Grahl, N. *et al.* (2012) Hypoxia and fungal pathogenesis: to air or not to air? *Eukaryot. Cell* 11, 560–570
- Ballou, E.R. *et al.* (2016) Lactate signalling regulates fungal beta-glucan masking and immune evasion. *Nat. Microbiol.* 2, 16238
- Clavaud, C. *et al.* (2012) The composition of the culture medium influences the beta-1,3-glucan metabolism of *Aspergillus fumigatus* and the antifungal activity of inhibitors of beta-1,3-glucan synthesis. *Antimicrob. Agents Chemother.* 56, 3428–3431
- Ene, I.V. *et al.* (2013) Growth of *Candida albicans* cells on the physiologically relevant carbon source lactate affects their recognition and phagocytosis by immune cells. *Infect. Immun.* 81, 238–248
- Hopke, A. *et al.* (2016) Neutrophil attack triggers extracellular trap-dependent *Candida* cell wall remodeling and altered immune recognition. *PLoS Pathog.* 12, e1005644
- Shepardson, K.M. *et al.* (2013) Hypoxia enhances innate immune activation to *Aspergillus fumigatus* through cell wall modulation. *Microbes Infect.* 15, 259–269
- Sherrington, S.L. *et al.* (2017) Adaptation of *Candida albicans* to environmental pH induces cell wall remodelling and enhances innate immune recognition. *PLoS Pathog.* 13, e1006403
- Amarsaikhan, N. *et al.* (2017) Caspofungin increases fungal chitin and eosinophil and gamma delta T cell-dependent pathology in invasive aspergillosis. *J. Immunol.* 199, 624–632
- Lamaris, G.A. *et al.* (2008) Caspofungin-mediated beta-glucan unmasking and enhancement of human polymorphonuclear neutrophil activity against *Aspergillus* and non-*Aspergillus* hyphae. *J. Infect. Dis.* 198, 186–192
- Marakalala, M.J. *et al.* (2013) Differential adaptation of *Candida albicans* *in vivo* modulates immune recognition by dectin-1. *PLoS Pathog.* 9, e1003315
- Walker, L.A. *et al.* (2008) Stimulation of chitin synthesis rescues *Candida albicans* from echinocandins. *PLoS Pathog.* 4, e1000040
- Wheeler, R.T. *et al.* (2008) Dynamic, morphotype-specific *Candida albicans* beta-glucan exposure during infection and drug treatment. *PLoS Pathog.* 4, e1000227
- Xu, W. *et al.* (2015) Activation and alliance of regulatory pathways in *C. albicans* during mammalian infection. *PLoS Biol.* 13, e1002076
- Barker, B.M. *et al.* (2012) Transcriptomic and proteomic analyses of the *Aspergillus fumigatus* hypoxia response using an oxygen-controlled fermenter. *BMC Genomics* 13, 62
- Brown, N.A. and Goldman, G.H. (2016) The contribution of *Aspergillus fumigatus* stress responses to virulence and antifungal resistance. *J. Microbiol.* 54, 243–253
- Valiente, V. *et al.* (2015) The *Aspergillus fumigatus* cell wall integrity signaling pathway: drug target, compensatory pathways, and virulence. *Front. Microbiol.* 6, 325
- Donlin, M.J. *et al.* (2014) Cross talk between the cell wall integrity and cyclic AMP/protein kinase A pathways in *Cryptococcus neoformans*. *mBio* 5, e01573-14
- O'Meara, T.R. *et al.* (2014) The *Cryptococcus neoformans* Rim101 transcription factor directly regulates genes required for adaptation to the host. *Mol. Cell Biol.* 34, 673–684
- Becker, J.M. *et al.* (2010) Pathway analysis of *Candida albicans* survival and virulence determinants in a murine infection model. *Proc. Natl. Acad. Sci. U. S. A.* 107, 22044–22049
- De Bernardis, F. *et al.* (1998) The pH of the host niche controls gene expression in and virulence of *Candida albicans*. *Infect. Immun.* 66, 3317–3325

38. Perez, J.C. and Johnson, A.D. (2013) Regulatory circuits that enable proliferation of the fungus *Candida albicans* in a mammalian host. *PLoS Pathog.* 9, e1003780
39. Sem, X. *et al.* (2016) beta-Glucan exposure on the fungal cell wall tightly correlates with competitive fitness of *Candida* species in the mouse gastrointestinal tract. *Front. Cell Infect. Microbiol.* 6, 186
40. Allert, S. *et al.* (2016) *In vivo* transcriptional profiling of human pathogenic fungi during infection: reflecting the real life? *PLoS Pathog.* 12, e1005471
41. Brothers, K.M. *et al.* (2013) NADPH oxidase-driven phagocyte recruitment controls *Candida albicans* filamentous growth and prevents mortality. *PLoS Pathog.* 9, e1003634
42. Bruno, V.M. *et al.* (2015) Transcriptomic analysis of vulvovaginal candidiasis identifies a role for the NLRP3 inflammasome. *mBio* 6, e00182-15
43. Enjalbert, B. *et al.* (2007) Niche-specific activation of the oxidative stress response by the pathogenic fungus *Candida albicans*. *Infect. Immun.* 75, 2143–2151
44. Jimenez-Lopez, C. *et al.* (2013) *Candida albicans* induces arginine biosynthetic genes in response to host-derived reactive oxygen species. *Eukaryot. Cell* 12, 91–100
45. Netea, M.G. *et al.* (2015) Immune defence against *Candida* fungal infections. *Nat. Rev. Immunol.* 15, 630–642
46. Kashem, S.W. and Kaplan, D.H. (2016) Skin Immunity to *Candida albicans*. *Trends Immunol.* 37, 440–450
47. Erwig, L.P. and Gow, N.A. (2016) Interactions of fungal pathogens with phagocytes. *Nat. Rev. Microbiol.* 14, 163–176
48. Lionakis, M.S. *et al.* (2017) Immunity against fungi. *JCI Insight* 2, 93156
49. Wang, C. and St Leger, R.J. (2006) A collagenous protective coat enables *Metarhizium anisopliae* to evade insect immune responses. *Proc. Natl. Acad. Sci. U. S. A.* 103, 6647–6652
50. Shinya, T. *et al.* (2015) Chitin-mediated plant-fungal interactions: catching, hiding and handshaking. *Curr. Opin. Plant Biol.* 26, 64–71
51. Fujikawa, T. *et al.* (2012) Surface alpha-1,3-glucan facilitates fungal stealth infection by interfering with innate immunity in plants. *PLoS Pathog.* 8, e1002882
52. Fujikawa, T. *et al.* (2009) Dynamics of cell wall components of *Magnaporthe grisea* during infectious structure development. *Mol. Microbiol.* 73, 553–570
53. Borges-Walmsley, M.I. *et al.* (2002) The pathobiology of *Paracoccidioides brasiliensis*. *Trends Microbiol.* 10, 80–87
54. Rappleye, C.A. *et al.* (2007) *Histoplasma capsulatum* alpha-(1,3)-glucan blocks innate immune recognition by the beta-glucan receptor. *Proc. Natl. Acad. Sci. U. S. A.* 104, 1366–1370
55. Steele, C. *et al.* (2005) The beta-glucan receptor dectin-1 recognizes specific morphologies of *Aspergillus fumigatus*. *PLoS Pathog.* 1, e42
56. Beauvais, A. *et al.* (2013) Deletion of the alpha-(1,3)-glucan synthase genes induces a restructuring of the conidial cell wall responsible for the avirulence of *Aspergillus fumigatus*. *PLoS Pathog.* 9, e1003716
57. Carrion Sde, J. *et al.* (2013) The RodA hydrophobin on *Aspergillus fumigatus* spores masks dectin-1- and dectin-2-dependent responses and enhances fungal survival *in vivo*. *J. Immunol.* 191, 2581–2588
58. Gravelat, F.N. *et al.* (2013) *Aspergillus galactosaminogalactan* mediates adherence to host constituents and conceals hyphal beta-glucan from the immune system. *PLoS Pathog.* 9, e1003575
59. Luther, K. *et al.* (2007) Phagocytosis of *Aspergillus fumigatus* conidia by murine macrophages involves recognition by the dectin-1 beta-glucan receptor and Toll-like receptor 2. *Cell Microbiol.* 9, 368–381
60. Dong, B. *et al.* (2014) A chitin-like component on sclerotic cells of *Fonsecaea pedrosoi* inhibits Dectin-1-mediated murine Th17 development by masking beta-glucans. *PLoS One* 9, e114113
61. Alspaugh, J.A. (2015) Virulence mechanisms and *Cryptococcus neoformans* pathogenesis. *Fungal Genet. Biol.* 78, 55–58
62. Bain, J.M. *et al.* (2014) *Candida albicans* hypha formation and mannan masking of beta-glucan inhibit macrophage phagosome maturation. *mBio* 5, e01874
63. Davis, S.E. *et al.* (2014) Masking of beta(1-3)-glucan in the cell wall of *Candida albicans* from detection by innate immune cells depends on phosphatidylserine. *Infect. Immun.* 82, 4405–4413
64. Galan-Diez, M. *et al.* (2010) *Candida albicans* beta-glucan exposure is controlled by the fungal CEK1-mediated mitogen-activated protein kinase pathway that modulates immune responses triggered through dectin-1. *Infect. Immun.* 78, 1426–1436
65. Hall, R.A. and Gow, N.A. (2013) Mannosylation in *Candida albicans*: role in cell wall function and immune recognition. *Mol. Microbiol.* 90, 1147–1161
66. McLellan, C.A. *et al.* (2012) Inhibiting GPI anchor biosynthesis in fungi stresses the endoplasmic reticulum and enhances immunogenicity. *ACS Chem. Biol.* 7, 1520–1528
67. Shen, H. *et al.* (2015) Abolishing cell wall glycosylphosphatidylinositol-anchored proteins in *Candida albicans* enhances recognition by host Dectin-1. *Infect. Immun.* 83, 2694–2704
68. Wheeler, R.T. and Fink, G.R. (2006) A drug-sensitive genetic network masks fungi from the immune system. *PLoS Pathog.* 2, e35
69. Hasim, S. *et al.* (2017) β -(1,3)-Glucan unmasking in some *Candida albicans* mutants correlates with increases in cell wall surface roughness and decreases in cell wall elasticity. *Infect. Immun.* 85, e00601–e00616
70. Lin, J. *et al.* (2016) Nanoscopic cell-wall architecture of an immunogenic ligand in *Candida albicans* during antifungal drug treatment. *Mol. Biol. Cell* 27, 1002–1014
71. Ene, I.V. *et al.* (2012) Host carbon sources modulate cell wall architecture, drug resistance and virulence in a fungal pathogen. *Cell Microbiol.* 14, 1319–1335
72. Shen, Q. and Rappleye, C.A. (2017) Differentiation of the fungus *Histoplasma capsulatum* into a pathogen of phagocytes. *Curr. Opin. Microbiol.* 40, 1–7
73. Linhares, I.M. *et al.* (2011) Contemporary perspectives on vaginal pH and lactobacilli. *Am. J. Obstet. Gynecol.* 204 (120), e1–5
74. Brown, G.D. and Gordon, S. (2001) Immune recognition. A new receptor for beta-glucans. *Nature* 413, 36–37
75. Wagener, J. *et al.* (2014) Fungal chitin dampens inflammation through IL-10 induction mediated by NOD2 and TLR9 activation. *PLoS Pathog.* 10, e1004050
76. Ost, K.S. *et al.* (2017) Rim pathway-mediated alterations in the fungal cell wall influence immune recognition and inflammation. *mBio* 8, e02290-16
77. Ene, I.V. *et al.* (2015) Cell wall remodeling enzymes modulate fungal cell wall elasticity and osmotic stress resistance. *mBio* 6, e00986
78. Maidan, M.M. *et al.* (2005) The G protein-coupled receptor Gpr1 and the Galpha protein Gpa2 act through the cAMP-protein kinase A pathway to induce morphogenesis in *Candida albicans*. *Mol. Biol. Cell* 16, 1971–1986
79. Karababa, M. *et al.* (2006) CRZ1, a target of the calcineurin pathway in *Candida albicans*. *Mol. Microbiol.* 59, 1429–1451
80. Preechathuth, K. *et al.* (2015) Cell wall protection by the *Candida albicans* class I chitin synthases. *Fungal Genet. Biol.* 82, 264–276
81. Dubey, L.K. *et al.* (2014) Induction of innate immunity by *Aspergillus fumigatus* cell wall polysaccharides is enhanced by the composite presentation of chitin and beta-glucan. *Immunobiology* 219, 179–188
82. Heilmann, C.J. *et al.* (2013) Surface stress induces a conserved cell wall stress response in the pathogenic fungus *Candida albicans*. *Eukaryot. Cell* 12, 254–264
83. del Fresno, C. *et al.* (2013) Interferon-beta production via Dectin-1-Syk-IRF5 signaling in dendritic cells is crucial for immunity to *C. albicans*. *Immunity* 38, 1176–1186

84. Drummond, R.A. and Brown, G.D. (2011) The role of Dectin-1 in the host defence against fungal infections. *Curr. Opin. Microbiol.* 14, 392–399
85. Lilly, L.M. *et al.* (2012) The beta-glucan receptor dectin-1 promotes lung immunopathology during fungal allergy via IL-22. *J. Immunol.* 189, 3653–3660
86. Lionakis, M.S. *et al.* (2012) Chemokine receptor Ccr1 drives neutrophil-mediated kidney immunopathology and mortality in invasive candidiasis. *PLoS Pathog.* 8, e1002865
87. Majer, O. *et al.* (2012) Type I interferons promote fatal immunopathology by regulating inflammatory monocytes and neutrophils during *Candida* infections. *PLoS Pathog.* 8, e1002811
88. Smeekens, S.P. *et al.* (2015) An anti-inflammatory property of *Candida albicans* beta-glucan: Induction of high levels of interleukin-1 receptor antagonist via a Dectin-1/CR3 independent mechanism. *Cytokine* 71, 215–222