

Electronic Supplementary Material for Materials and Structures

Assessment of test methods for the durability of thermal mortars exposure to freezing

J. Maia ^{(1)*}, Nuno M. M. Ramos ^{(1)*}, R. Veiga ⁽²⁾

⁽¹⁾ CONSTRUCT-LFC, Faculty of Engineering (FEUP), University of Porto, Porto, Portugal, Rua Dr. Roberto Frias s/n, 4200-465 Porto, Portugal.

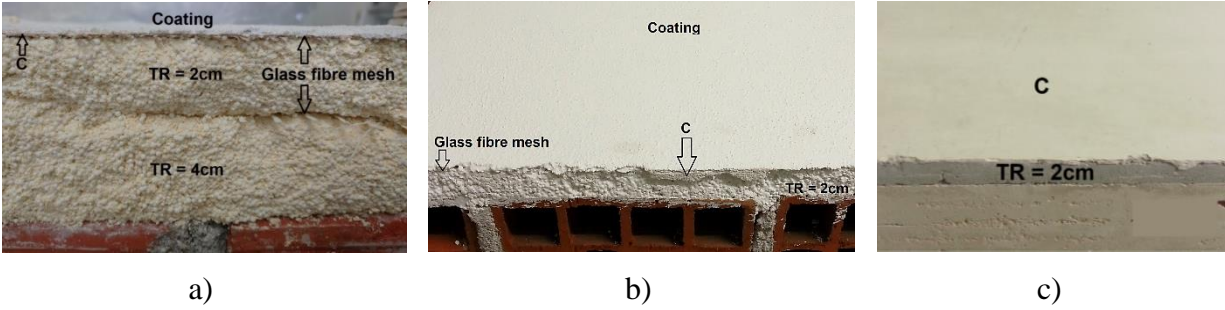
⁽²⁾ LNEC, National Laboratory for Civil Engineering, Lisbon, Portugal, Av. do Brasil 101, 1700-066 Lisbon, Portugal.

*Corresponding author:

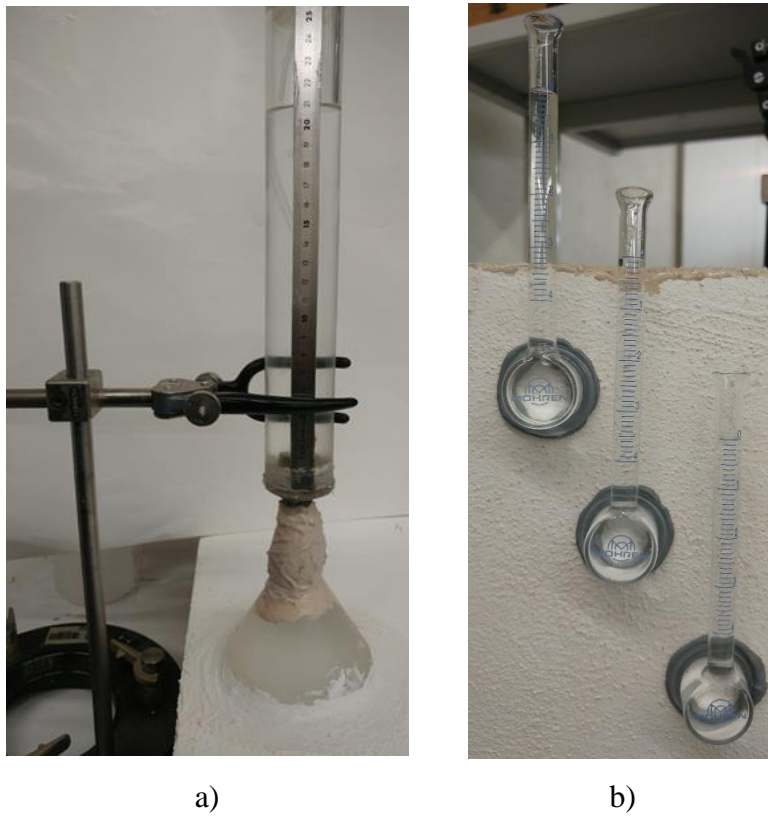
E-mail: joanamaia@fe.up.pt, Tel: 00351 225083732

Supplementary Materials Content:

- SM1: Constitution and cross-section of the studied systems
- SM2: Water permeability test equipment
- SM3: Representative cohesive fracture patterns obtained in S2 and S3
- SM4: Adhesive fracture pattern obtained in S1, after freeze-thaw ageing cycles
- SM5: Visual observation of a representative dent after the hard body impact (10J) before ageing
- SM6: Visual observation of a representative dent after the hard body impact (10J) after ageing
- SM7: Representative damages in the coating and sealant after freeze-thaw ageing cycles



SM1. Constitution and cross-section of the studied systems: a) S1; b) S2; c) S3.



SM2. Water permeability tests equipment: a) Cone method from EN 1015-21; b) Karsten tubes method.



a)



b)

SM3. Representative cohesive fracture patterns, obtained in: a) S2; b) S3.

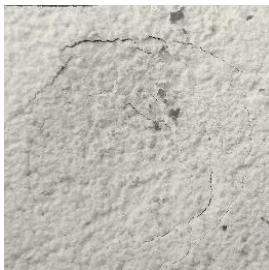


a)



b)

SM4. Adhesive fracture pattern obtained in S1, after freeze-thaw ageing cycles: a) Specimens overview; b) Detailed view.



a)



b)

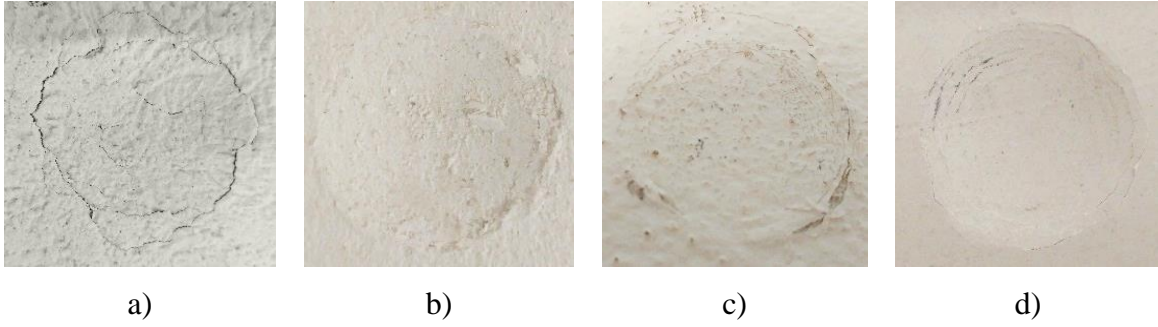


c)



d)

SM5. Visual observation of a representative dent after the hard body impact (10J) before ageing in: a) S1-O; b) S1-M; c) S2; d) S3.



SM6. Visual observation of a representative dent after the hard body impact (10J) after ageing in:
a) S1-O; b) S1-M; c) S2; d) S3.



SM7. Representative damages: a) Damage of the coating; b) Cracks on the sealant, after freeze-thaw ageing cycles.