

2021

APA 7th Paraphrasing

Melissa Maria Johnson
Nova Southeastern University, mj774@nova.edu

Follow this and additional works at: https://nsuworks.nova.edu/library_learn_all

Recommended Citation

Johnson, Melissa Maria, "APA 7th Paraphrasing" (2021). *Library Learn - Complete Video Collection*. 62.
https://nsuworks.nova.edu/library_learn_all/62

This Book is brought to you for free and open access by the Library Learn at NSUWorks. It has been accepted for inclusion in Library Learn - Complete Video Collection by an authorized administrator of NSUWorks. For more information, please contact nsuworks@nova.edu.

LIBRARY **LEARN**

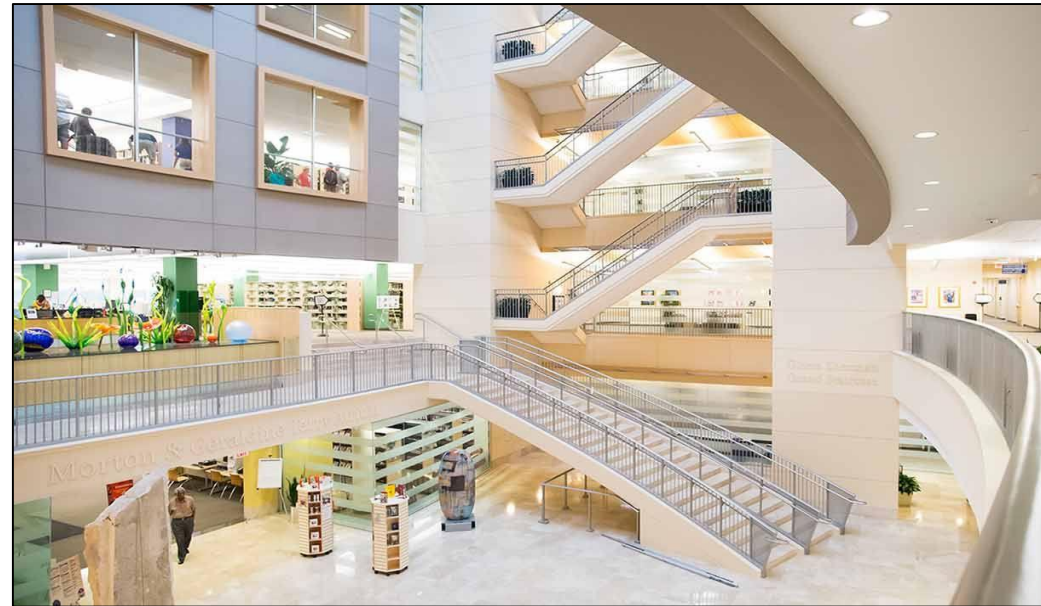


LEARN TO USE THE LIBRARY LIKE A PRO



Alvin Sherman Library, Research, and Information Technology Center
Martin and Gail Press Health Professions Division Library
Oceanographic Campus Library
Panza Maurer Law Library

APA 7th: Paraphrasing and long Paraphrasing



Outline:

- What is paraphrasing?
- How similar is too similar?
- How to paraphrase?
- How do you cite a paraphrase?



What is paraphrasing?

Paraphrasing restates another's idea (or your own previously published idea) **in your own words**. Paraphrasing allows you to **summarize** and **synthesize** information from one or more sources, focus on significant information, and compare and contrast relevant details.

- <https://apastyle.apa.org/style-grammar-guidelines/citations/paraphrasing>



How similar is too similar?

Changing only a few words or substituting synonyms on a one-to-one basis is called patchwriting and is not paraphrasing.

Original Quote	Patchwriting
<p><u>"New tracks aside, the challenge is at the bare minimum to bring light and air into this underground purgatory and, beyond that, to create for millions of people a new space worthy of New York, a civic hub in the spirit of the great demolished one, more attuned to the city's aspirations and democratic ideals."</u> - Michael Kimmelman, <i>The New York Times</i></p>	<p>Besides replacing the railroad tracks <u>"the challenge is at the bare minimum to bring light and air into this underground purgatory."</u> <u>Travelers need a new space</u> in which they start and end their commutes in New York. They are deserving of a new environment, "a civic hub in the spirit of the great demolished one, more attuned to the city's aspirations and democratic ideals."</p>

-<https://easybib.wordpress.com/students/research-guide/paraphrasing-patchwriting-direct-quotes/d-patchwriting/>

How to paraphrase?

Summarize and synthesize the information:

Original

To the extent that a woman's self-image is challenged or threatened by an unattainable ideal of an impossibly thin female physique, she may well become susceptible to disruption of her self-regard, and may be more likely to develop an eating disorder.

Paraphrase in Paper (APA)

If a woman interprets the media's representation of thinness as the ideal she must achieve, her sense of self-esteem might be threatened and even damaged, making her more likely to exhibit disordered eating patterns (Polivy & Herman, 2004, p. 2).

-<https://slidetodoc.com/quoting-paraphrasing-and-apa-style-citations-dr-xiaorong/>

How do you cite a paraphrase?

There are two ways to cite a paraphrase:

1. In the narrative

narrative citation, 8.11;
paraphrasing, 8.23

the published literature, in findings that ran contrary to faculty fears that online SETs might be dominated by low-performing students, Avery et al. (2006) found that students with higher grade-point averages (GPAs) were more likely to complete online evaluations. Likewise, Jaquett et al. (2017) reported that students who had positive experiences in their classes (including receiving the grade they expected to earn) were more likely to submit course evaluations.

How do you cite a paraphrase? cont...

2. At the end of the paraphrase the information is in parenthesis

should take extra care when they interpret SET scores. Decision makers often ignore questions about whether means derived from small samples accurately represent the population mean (Tversky & Kahneman, 1971). Reviewers frequently treat all numeric differences as if they were equally meaningful



Long Paraphrasing

A paraphrase may continue for several sentences. In such cases, **cite the work being paraphrased on first mention**. Once the work has been cited, it is not necessary to repeat the citation as long as the context of the writing makes it clear that the same work continues to be paraphrased.

-<https://apastyle.apa.org/style-grammar-guidelines/citations/paraphrasing>



An example of citing a long paraphrase

narrative citation used
to paraphrase methods
from two studies, 8.23

long paraphrase, 8.24

Exceptions to this pattern of minimal or nonsignificant differences in average SET scores appeared in Nowell et al. (2010) and Morrison (2011), who examined a sample of 29 business courses. Both studies reported lower average scores when SETs were administered online. However, they also found that SET scores for individual items varied more within an instructor when SETs were administered online versus on paper. Students who completed SETs on paper tended to record the same response for all questions, whereas students who completed the forms online tended to respond differently to different questions. Both research groups argued that scores obtained online might not be directly comparable to scores obtained through paper-based forms. They advised that institutions administer SETs entirely online or entirely on paper to ensure consistent, comparable evaluations across faculty.

Contact us if you still have questions

The screenshot displays the website header for NSU Florida, featuring the university logo and the name of the Alvin Sherman Library, Research, and Information Technology Center. A navigation bar includes links for 'Give!', 'Get a Library Card', 'Contact us', 'Libraries', 'Search', and 'Account'. The main content area contains a 'Shark Search' input field with a search button and links to 'Catalog Only (NovaCat)', 'Full Text Finder', 'Google Scholar', 'Citation', and 'Help'. On the right side, a chat widget titled 'Ask a Librarian' is visible, which is circled in purple. The chat widget contains the following text: 'Reference desk is open from 10 a.m. - 7 p.m. (Friday & Saturday until 10 a.m. - 6 p.m.). See hours.', 'Call (954) 262-4613 (Toll-Free)', and 'Email refdesk@nova.edu or use our form.'



If you have questions about the content in this tutorial or any of the tutorials in LibraryLearn, contact us at the link below:

<http://lib.nova.edu/contact>