

Localized turbulent flows on scouring granular beds*

G. Gioia

*Department of Theoretical and Applied Mechanics,
University of Illinois, Urbana, IL 61801*

Fabián A. Bombardelli

*Department of Civil and Environmental Engineering,
University of California, Davis, CA 95616*

(Dated: May 22, 2005)

Abstract

In many applications a sustained, localized turbulent flow scours a cohesionless granular bed to form a pothole. Here we use similarity methods to derive a theoretical formula for the equilibrium depth of the pothole. Whereas the empirical formulas customarily used in applications contain numerous free exponents, the theoretical formula contains a single one, which we show can be determined via the phenomenological theory of turbulence. Our derivation affords insight into how a state of dynamic equilibrium is attained between a granular bed and a localized turbulent flow.

* Accepted for publication in Physical Review Letters, May 2005

When a water jet plunges into the free surface of a body of water of uniform depth, a turbulent cauldron is established in the body of water under the point of entrance of the jet. If the body of water lies on a granular bed, the turbulent cauldron starts to scour the bed to form a pothole (Fig. 1). Under a sustained action of the jet, the pothole deepens until a state of dynamic equilibrium is attained between the granular bed and the turbulent cauldron. This scenario is relevant to many applications in hydrology, geomorphology, and hydraulic engineering. For example, in the bed of a stream below an overflowing gate, a pothole forms and may compromise the stability of the gate [1]. This application poses the direct problem: given the power of the jet, determine the depth of the pothole under equilibrium conditions. Other applications may pose the inverse problem. For example, the depth of potholes and other relics of scouring found on the beds of Martian outflow channels could be used to gauge the colossal floods that carved these channels in pre-Amazonian times [2]. Seeking to describe the equilibrium conditions of turbulent cauldrons on scouring beds, researchers have proposed a number of widely used empirical formulas [3]. These formulas have been predicated on dimensional analysis and heuristic arguments, and contain numerous free exponents that have been determined by fitting experimental results. It is hardly surprising, therefore, if when applied to a same problem different formulas give badly disparate predictions (see, e.g., [1] p. 658 ff.). Yet, for lack of better means, we continue to use empirical formulas to deal with many common applications of turbulent flows. In this letter, we use dimensional analysis and similarity methods [5] to derive a theoretical formula containing a single free exponent—a similarity exponent. This formula subsumes the empirical formulas proposed so far and is valid asymptotically under conditions that are amply met in applications. Then we show that the same theoretical formula as well as the value of the similarity exponent can be derived using the phenomenological theory of turbulence [6]. To that end, we build on recent work [7] indicating that the phenomenological theory may be applied to turbulence that is both anisotropic and inhomogeneous (as is the case in the turbulent cauldron). Our method of analysis may also be useful in developing a theoretical understanding of mine burial, bridge pier-induced erosion, and other applications in which a turbulent flow interacts with a granular bed.

An exhaustive compilation of empirical formulas for the equilibrium depth of the pothole was undertaken by Mason and Arumugam [3]. From that compilation, it is apparent that all empirical formulas proposed so far are but special cases of the following generalized empirical

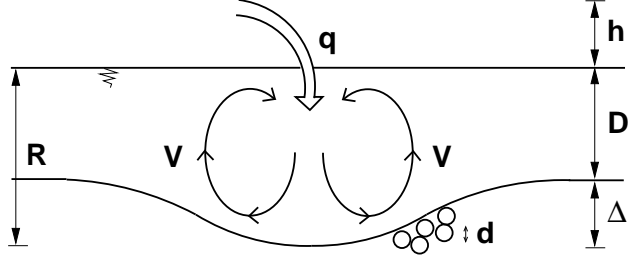


FIG. 1: Geometry and notation. The jet of volume flux q plunges from a height h (called the *head*). The turbulent cauldron is spanned by its largest eddies (of characteristic velocity V). The granular bed is composed of cohesionless grains of diameter d . Note that the geometry is two-dimensional: the jet, the turbulent cauldron, and the pothole extend to infinity in the direction perpendicular to the plane of the figure (or thickness).

formula,

$$R = K q^{e_q} h^{e_h} g^{e_g} d^{e_d} \left(\frac{\rho}{\rho_s - \rho} \right)^{e_\rho}, \quad (1)$$

where R is the sum of the depth of the pothole and the depth of the body of water, $R = \Delta + D$, and coincides with the size of the turbulent cauldron (Fig. 1); K is a free multiplicative constant whose value must be determined empirically; q is the volume flux of the jet per unit thickness (measured in the direction perpendicular to the plane in Fig. 1); h is the head of the jet; g is the gravitational acceleration; d is the diameter of the grains of the bed or *absolute rugosity*; ρ is the density of water; ρ_s is the density of the grains of the bed; and e_q , e_h , e_g , e_d , and e_ρ are free exponents whose values must be determined empirically. The rows of table I list the values of the exponents determined empirically (or set to zero from the start) by different researchers. (In the case of Bormann and Julien, the values of the exponents were determined semi-empirically [4].) Each researcher (or group of researchers) determined the values of several free parameters (including a number of exponents and the multiplicative constant K) by fitting different experimental results. As might have been surmised from the number of free parameters and the diversity of experimental results, and table I confirms, in some cases different researchers obtained widely dissimilar values of a given exponent.

We now ascertain to what extent a theoretical formula may be predicated on dimensional analysis and similarity methods. We start by choosing a suitable set of variables. Because the turbulence is fully developed in applications, the viscosity need not be included in our

Researcher(s) (Year)	e_q	e_h	e_g	e_d	e_ρ
Schoklitsch (1932)	0.57	0.2	0	-0.32	0
Veronese (1937)	0.54	0.225	0	-0.42	0
Eggenberger & Müller (1944)	0.6	0.5	-0.3	-0.4	4/9
Hartung (1959)	0.64	0.36	0	-0.32	0
Franke (1960)	0.67	0.5	0	-0.5	0
Kotoulas (1967)	0.7	0.35	-0.35	-0.4	0
Chee & Padiyar (1969)	0.67	0.18	0	-0.063	0
Chee & Kung (1974)	0.6	0.2	0	-0.1	0
Machado (1980)	0.5	0.3145	0	-0.0645	0
Bormann & Julien (1991)	0.6	0.5	-0.3	-0.4	0.8
Theory	2/3	2/3	-1/3	-2/3	1

TABLE I: Sets of values of the exponents of eq. (1) empirically determined (or set to zero) by different researchers. Adapted from [3] and [4]. Also shown are the theoretical values of the exponents determined here.

set of variables. After evaluating a number of alternatives, we decide for the following set of 6 variables: R , ρ , g , ρ_s , d , and P . P is the power of the jet per unit thickness, $P = q\rho gh$, and therefore the power that sustains the turbulent cauldron. The choice of P places the focus of our analysis on the *energetics* of the turbulent cauldron, and constitutes the key to our results. The dimensional equations $[P] = [\rho][g]^{3/2}[R]^{5/2}$, $[\rho_s] = [\rho]$, and $[d] = [R]$ show that the dimensions of three of the variables (P , ρ_s , and d) can be expressed as products of powers of the dimensions of the other variables; it follows from Buckingham's Π theorem [5] that we can reduce the functional relation among P , R , ρ , g , ρ_s , and d to an equivalent functional relation among three dimensionless variables. With the sensible choice of dimensionless variables $\Pi_1 \equiv P/\rho g^{3/2} R^{5/2}$, $\Pi_2 \equiv \rho_s/\rho$ (the relative density of the bed), and $\Pi_3 \equiv d/R$ (the relative roughness of the bed), we may write $\Pi_1 = \mathcal{F}[\Pi_2, \Pi_3]$ or, equivalently,

$$P = \rho g^{3/2} R^{5/2} \mathcal{F} \left[\frac{d}{R}, \frac{\rho_s}{\rho} \right], \quad (2)$$

where \mathcal{F} is a dimensionless function of the relative density and of the relative roughness of the bed. To make further progress, we note that in applications $d/R \ll 1$, and seek to

formulate an asymptotic similarity law for $d/R \rightarrow 0$. There are two possible similarities: complete and incomplete [5]. In the case of complete similarity in d/R , $\mathcal{F}[d/R, \rho_s/\rho]$ becomes independent of d/R as $d/R \rightarrow 0$. If this were the case, R would be independent of d for $d/R \ll 1$, which is incompatible with the empirical values of the exponent e_d in table I. In the case of incomplete similarity in d/R , (2) admits the following power-law asymptotic expression [5], $\mathcal{F}[d/R, \rho_s/\rho] = (d/R)^\alpha \mathcal{G}[\rho_s/\rho] + o[(d/R)^\alpha]$, where α is a similarity exponent, which cannot be determined by dimensional analysis, and \mathcal{G} is a dimensionless function of the relative density of the bed, ρ_s/ρ . By substituting the leading term of this asymptotic expression in (2) and rearranging, we obtain the following formula for R ,

$$R = K q^{e_q} h^{e_h} g^{e_g} d^{e_d} \mathcal{H} \left[\frac{\rho_s}{\rho} \right] \quad (3)$$

where $e_q = e_h = 2/(5 - 2\alpha)$, $e_g = -1/(5 - 2\alpha)$, $e_d = -2\alpha/(5 - 2\alpha)$, and we have defined $\mathcal{H}[\Pi_2] \equiv 1/K(\mathcal{G}[\Pi_2])^{2/(5-2\alpha)}$, where K is a dimensionless constant. The theoretical formula of eq. (3) has the same form as the generalized empirical formula of eq. (1) (provided that $\mathcal{H}[\Pi_2] = 1/(\Pi_2 - 1)^{e_\rho}$). Nevertheless, the exponents that appear in both formulas (with the exception of e_ρ) are now revealed to be functions of a single free parameter, the similarity exponent. Because these functions were unknown, researchers developing empirical formulas treated the exponents of (1) as free parameters whose values had to be determined empirically (table I). A much improved way of determining these exponents suggests itself now, via the empirical determination of the similarity exponent. Yet we will not pursue this way of determining the exponents. Instead, we will show presently that eq. (3) as well as the function $\mathcal{H}[\rho_s/\rho]$ and the value of the similarity exponent can be derived in a completely independent way using the phenomenological theory of turbulence.

The phenomenological theory [6] is based on two tenets pertaining to the steady production of turbulent (kinetic) energy: (1) The production occurs at the lengthscale of the largest turbulent eddies in the flow and (2) The rate of production is independent of the viscosity. From these tenets, it is possible to obtain a scaling expression for the rate of production of turbulent energy per unit mass of cauldron (which we denote by ε) in terms of the velocity of the largest eddies (which we have denote by V) and of the size of the largest eddies (which scales with R) [6]. The result is Taylor's scaling, $\varepsilon \sim V^3/R$ [8], where the symbol “ \sim ” stands for “scales with.” Further, it is possible to show that the velocity of the turbulent eddies of size l , u_l , scales in the form $u_l \sim (\varepsilon l)^{1/3}$, valid for $l \gg \eta$, where

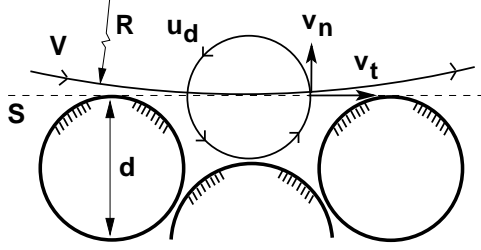


FIG. 2: Three grains of diameter d lying at the surface of the pothole. The dashed line is the trace of a wetted surface S tangent to the peaks of the grains at the surface of the pothole.

$\eta = \nu^{3/4}\varepsilon^{-1/4}$ is the Kolmogórov (viscous) lengthscale and ν the kinematic viscosity [6, 7]. By combining $\varepsilon \sim V^3/R$ and $u_l \sim (\varepsilon l)^{1/3}$ we obtain the Kolmogórov scaling, $u_l \sim V (l/R)^{1/3}$ (valid for $l/\eta \gg 1$). We shall recall these results later on.

Now we consider the energetics of the turbulent cauldron and seek to obtain a scaling expression for V , the velocity of the largest eddies. The production of turbulent energy is driven by the jet, whose power per unit thickness is $P = q\rho gh$. Therefore, P must equal the rate of production of turbulent energy per unit thickness of cauldron (note that P is independent of the viscosity, in accord with the second tenet of the phenomenological theory stated above), and we can write $P = \varepsilon M$, where ε is the rate of production of turbulent energy per unit mass of cauldron, and $M \sim \rho R^2$ is the mass per unit thickness of cauldron. It follows that $\varepsilon \sim qgh/R^2$ and, from a comparison with $\varepsilon \sim V^3/R$, that

$$V \sim \left(qg \frac{h}{R} \right)^{1/3}, \quad (4)$$

which is the sought expression for the velocity of the largest eddies in the cauldron.

Next we consider the surface of the pothole and seek to obtain a scaling expression for the shear stress exerted by the flow on that surface. Let us call S a wetted surface tangent to the peaks of the grains at the surface of the pothole (Fig. 2). Under conditions of fully developed turbulence, the shear stress acting on S is the Reynolds stress, $\tau = \rho |\overline{v_n v_t}|$, where v_n and v_t are the fluctuating velocities normal and tangent to S , respectively, and an overbar denotes time average. We study v_n first, and start by making a crucial observation: if the relative roughness is small ($d/R \ll 1$), eddies of sizes larger than, say, $2d$, can make only a negligible contribution to v_n (this is entirely a matter of geometry; see Fig. 2). On the other hand, eddies smaller than d fit in the space between successive grains on the bed, so that these eddies can make a sizable contribution to v_n . Nevertheless, where these eddies

are smaller than, say, $d/2$, their velocities are negligible compared with the velocity of the eddies of size d . (Recall that according to the Kolmogórov scaling, $u_l \sim V(l/R)^{1/3}$ (valid for $l/\eta \gg 1$); therefore, the smaller the size of an eddy, l , the smaller its velocity, u_l .) Thus, assuming that $d/\eta \gg 1$, v_n is dominated by u_d , the velocity of the eddies of size d . In other words, $v_n \sim u_d$. We now turn to v_t . Eddies of all sizes can provide a velocity tangent to S . Thus, v_t is dominated by V , the velocity of the largest eddies, and $v_t \sim V$. We conclude that $|\overline{v_n v_t}| \sim u_d V$, and therefore $\tau \sim \rho u_d V$ [9]. We may now substitute (4) and $u_d \sim V(d/R)^{1/3}$ in $\tau \sim \rho u_d V$ to obtain

$$\tau \sim \rho \frac{(qhg)^{2/3} d^{1/3}}{R}, \quad (5)$$

which is the sought expression for the shear stress exerted by the turbulent cauldron on the surface of the pothole, valid for $\eta \ll d \ll R$. To discuss eq. (5), it is convenient to rewrite it in terms of the power of the jet per unit thickness, $P = q\rho gh$, with the result $\tau \sim P^{2/3}(\rho d)^{1/3}/R$. Consider now the instant when a jet of power P plunges into the surface of a body of water of uniform depth D . Then, the pothole starts to form, and as the depth Δ of the pothole increases, the size $R = \Delta + D$ of the cauldron increases accordingly, leading to a decrease in the shear stress on the surface of the pothole. Eventually, the shear stress decreases to a critical value τ_c , and the scouring ceases. Thus the condition of equilibrium between the turbulent cauldron and the granular bed is $\tau = \tau_c$ [10].

To obtain a scaling expression for the critical stress τ_c , we follow Shields [11] in recognizing that the grains at the surface of a granular bed are subjected to a Reynolds stress $\tau \sim \rho u_d V$ (exerted by the turbulent flow), a gravitational stress $\tau_g \sim (\rho_s - \rho)gd$, and a viscous stress $\tau_\nu \sim \rho\nu V/d$. Then, if the equilibrium condition is satisfied, we can perform a straightforward dimensional analysis using three variables: $\tau = \tau_c$, τ_g , and τ_ν . The result is $\tau_c \sim \tau_g \mathcal{I}[\text{Re}_d]$, where \mathcal{I} is a dimensionless function of a Reynolds number $\text{Re}_d \equiv \tau/\tau_\nu = u_d d/\nu$. By recalling that $\varepsilon \sim u_d^3/d$, $\eta = \nu^{3/4}\varepsilon^{-1/4}$, and $d/\eta \gg 1$, we conclude that $\text{Re}_d \sim (d/\eta)^{4/3} \gg 1$, and seek to formulate a similarity law for $\text{Re}_d \rightarrow \infty$. If we assume complete similarity in Re_d , then $\mathcal{I}[\text{Re}_d]$ tends to a constant as $\text{Re}_d \rightarrow \infty$ (as indicated by experimental results on incipient motion of granular beds [11]), and therefore $\tau_c \sim (\rho_s - \rho)gd$, which is the sought expression for the critical stress.

We are now ready to impose the equilibrium condition. By substituting (5) and $\tau_c \sim$

$(\rho_s - \rho)gd$ into $\tau = \tau_c$ and rearranging, we obtain the following scaling expression for R ,

$$R \sim q^{2/3} h^{2/3} g^{-1/3} d^{-2/3} \left(\frac{\rho}{\rho_s - \rho} \right). \quad (6)$$

This expression gives (up to a multiplicative constant) a complete theoretical formula to compute the equilibrium depth of the pothole as $\Delta = R - D$, where D is the depth of the body of water (Fig. 1). A comparison of (6) with (3) indicates that $e_q = e_h = 2/3$, $e_g = -1/3$, and $e_d = -2/3$, in accord with a similarity exponent of value $\alpha = 1$. Thus, the theory gives values of e_q , e_h , e_g , and e_d that relate to one another in the form necessitated by the independent analysis that yielded (3). Further, a comparison of (6) with (3) indicates that $\mathcal{H}[\Pi_2] = 1/(\Pi_2 - 1)$, which corresponds to the generalized empirical formula of eq. (1) with $e_\rho = 1$. The theoretical values of the exponents appear in table I, where they may be compared with the corresponding empirical values determined by various researchers. This comparison affords a considerable degree of experimental support to our theoretical results, even though for each exponent the alternative empirical values vary over a sizable range, as might have been expected where many different, very difficult experiments were involved.

In this letter, we have focused on the energetics of the turbulent cauldron to derive (up to a multiplicative constant) a theoretical formula for the depth of a pothole in equilibrium with a turbulent cauldron driven by a jet of constant power. The formula represents the power-law asymptotic behavior of a fully developed turbulent flow of incomplete similarity in the relative roughness of the cohesionless granular bed. In deriving the formula based on the phenomenological theory, we have gained insights into the form of interaction between the cauldron and the granular bed. These insights are of obvious theoretical import, but they also suggest improved ways of dealing with applications. Thus, for example, on the bed of an overflowing dam a pothole is frequently excavated in advance in order to confine the dissipation of excess hydraulic power [12]. Our discussion of the equilibrium condition between the bed and the cauldron, $\tau = \tau_c$, suggests that to incorporate a *physically meaningful* safety factor in the design of such a pothole we might impose the *design* condition $\tau = \tau_c/f$, where $f > 1$ is the safety factor. The design value of the depth of the pothole would then be $\Delta_{\text{design}} = f\Delta + (f - 1)D$, where Δ is the equilibrium value of the depth. In conclusion, our results indicate that despite current practice, theory may be advantageously used instead of empirical formulas in the analysis and design of overflowing gates, weirs, dams, and natural obstructions.

We thank J. W. Phillips and P. Chakraborty for kindly reading our manuscript and suggesting ways of improving it.

-
- [1] See, for example, W. H. Graf, *Fluvial Hydraulics* (John Wiley & Sons, Chichester, UK, 1998).
- [2] We have discussed this form of paleohydrological inference with J. W. Head of Brown University (private communication, Providence, RI, May 2004). Potholes hundreds of meters deep have been documented on the beds of Martian outflow channels; see, for example, M. S. Bobinson and K. L. Tanaka, *Geology* **18**, 902 (1990). On Earth, the potholes that form in the backswamps of a river where a levee is overtopped by a high flood become long-lasting geomorphological relics known as *crevasse lakes* (or *blue holes* to the inhabitants of the lower Mississippi valley).
- [3] P. J. Mason and K. Arumugam, *J. Hyd. Eng.* **111**, 220 (1985), and references therein.
- [4] N. E. Bormann and P. Y. Julien, *J. Hyd. Engrg.* **117**, 579 (1991).
- [5] G. I. Barenblatt, *Scaling, self-similarity, and intermediate asymptotics* (University Press, Cambridge, 1986).
- [6] U. Frisch, *Turbulence* (University Press, Cambridge, 1995).
- [7] B. Knight and L. Sirovich, *Phys. Rev. Lett.* **65**, 1356 (1990); T. S. Lundgren, *Phys. Fluids* **14** 638 (2002); and T. S. Lundgren, *ibidem* **15** 1024 (2003).
- [8] D. Lohse, *Phys. Rev. Lett.* **73**, 3223 (1994). The existence of an upper bound on ε that is independent of the viscosity has been proved *mathematically*; see C. R. Doering and P. Constantin, *Phys. Rev. Lett.* **69**, 1648 (1992).
- [9] G. Gioia and F. A. Bombardelli, *Phys. Rev. Lett.* **88**, 014501 (2002).
- [10] There is experimental evidence that grains from the bed may become entrained in the turbulent cauldron while the pothole deepens. Nevertheless, the grains return to the bed as soon as the scouring ceases; see, for example, the photographs of Fig. 3 in V. D'Agostino and V. Ferro, *J. Hyd. Engrg.* **130**, 24 (2004). Thus, the condition of equilibrium between the turbulent cauldron and the granular bed is not affected by the entrainment of grains. Now after the grains return to the bed, there may be a change in the size of the coves between grains on the bed (i.e., the roughness of the bed may change). Unless the grains are very small, and therefore highly cohesive, the size of these coves must still scale with the diameter of the

grains. If the grains are cohesive, the cohesive energy introduces a new lengthscale; when the grains return to the bed, this lengthscale may become manifest in the form of a very porous aggregate—a rougher bed. Therefore, we have assumed the grains to be cohesionless. This is not a very restrictive assumption. In air, the cohesion becomes important if the grains are smaller than about 0.1mm (that is to say, for silts—sands are cohesionless). Nevertheless, in water the cohesion is largely neutralized, even for silts, and becomes noticeable only if the grains are clayish.

[11] A. J. Raudkivi, *Loose Boundary Hydraulics* (Balkema, Rotterdam, 1998).

[12] Such a pothole is known to hydraulic engineers as a *plunge pool*. A well-designed plunge pool prevents the downstream advection of turbulent energy and the attendant environmental damage. Incidentally, as many an angler knows, in small dams the plunge pool also affords fish an attractive hiding place.

List of Recent TAM Reports

No.	Authors	Title	Date
982	Adrian, R. J., and Z.-C. Liu	Observation of vortex packets in direct numerical simulation of fully turbulent channel flow – <i>Journal of Visualization</i> , in press (2002)	Oct. 2001
983	Fried, E., and R. E. Todres	Disclinated states in nematic elastomers – <i>Journal of the Mechanics and Physics of Solids</i> 50 , 2691–2716 (2002)	Oct. 2001
984	Stewart, D. S.	Towards the miniaturization of explosive technology – Proceedings of the 23rd International Conference on Shock Waves (2001)	Oct. 2001
985	Kasimov, A. R., and Stewart, D. S.	Spinning instability of gaseous detonations – <i>Journal of Fluid Mechanics</i> (submitted)	Oct. 2001
986	Brown, E. N., N. R. Sottos, and S. R. White	Fracture testing of a self-healing polymer composite – <i>Experimental Mechanics</i> (submitted)	Nov. 2001
987	Phillips, W. R. C.	Langmuir circulations – <i>Surface Waves</i> (J. C. R. Hunt and S. Sajjadi, eds.), in press (2002)	Nov. 2001
988	Gioia, G., and F. A. Bombardelli	Scaling and similarity in rough channel flows – <i>Physical Review Letters</i> 88 , 014501 (2002)	Nov. 2001
989	Riahi, D. N.	On stationary and oscillatory modes of flow instabilities in a rotating porous layer during alloy solidification – <i>Journal of Porous Media</i> 6 , 1–11 (2003)	Nov. 2001
990	Okhuysen, B. S., and D. N. Riahi	Effect of Coriolis force on instabilities of liquid and mushy regions during alloy solidification – <i>Physics of Fluids</i> (submitted)	Dec. 2001
991	Christensen, K. T., and R. J. Adrian	Measurement of instantaneous Eulerian acceleration fields by particle-image accelerometry: Method and accuracy – <i>Experimental Fluids</i> (submitted)	Dec. 2001
992	Liu, M., and K. J. Hsia	Interfacial cracks between piezoelectric and elastic materials under in-plane electric loading – <i>Journal of the Mechanics and Physics of Solids</i> 51 , 921–944 (2003)	Dec. 2001
993	Panat, R. P., S. Zhang, and K. J. Hsia	Bond coat surface rumpling in thermal barrier coatings – <i>Acta Materialia</i> 51 , 239–249 (2003)	Jan. 2002
994	Aref, H.	A transformation of the point vortex equations – <i>Physics of Fluids</i> 14 , 2395–2401 (2002)	Jan. 2002
995	Saif, M. T. A, S. Zhang, A. Haque, and K. J. Hsia	Effect of native Al_2O_3 on the elastic response of nanoscale aluminum films – <i>Acta Materialia</i> 50 , 2779–2786 (2002)	Jan. 2002
996	Fried, E., and M. E. Gurtin	A nonequilibrium theory of epitaxial growth that accounts for surface stress and surface diffusion – <i>Journal of the Mechanics and Physics of Solids</i> 51 , 487–517 (2003)	Jan. 2002
997	Aref, H.	The development of chaotic advection – <i>Physics of Fluids</i> 14 , 1315–1325 (2002); see also <i>Virtual Journal of Nanoscale Science and Technology</i> , 11 March 2002	Jan. 2002
998	Christensen, K. T., and R. J. Adrian	The velocity and acceleration signatures of small-scale vortices in turbulent channel flow – <i>Journal of Turbulence</i> , in press (2002)	Jan. 2002
999	Riahi, D. N.	Flow instabilities in a horizontal dendrite layer rotating about an inclined axis – <i>Journal of Porous Media</i> , in press (2003)	Feb. 2002
1000	Kessler, M. R., and S. R. White	Cure kinetics of ring-opening metathesis polymerization of dicyclopentadiene – <i>Journal of Polymer Science A</i> 40 , 2373–2383 (2002)	Feb. 2002
1001	Dolbow, J. E., E. Fried, and A. Q. Shen	Point defects in nematic gels: The case for hedgehogs – <i>Archive for Rational Mechanics and Analysis</i> , in press (2004)	Feb. 2002
1002	Riahi, D. N.	Nonlinear steady convection in rotating mushy layers – <i>Journal of Fluid Mechanics</i> 485 , 279–306 (2003)	Mar. 2002
1003	Carlson, D. E., E. Fried, and S. Sellers	The totality of soft-states in a neo-classical nematic elastomer – <i>Journal of Elasticity</i> 69 , 169–180 (2003) with revised title	Mar. 2002
1004	Fried, E., and R. E. Todres	Normal-stress differences and the detection of disclinations in nematic elastomers – <i>Journal of Polymer Science B: Polymer Physics</i> 40 , 2098–2106 (2002)	June 2002

List of Recent TAM Reports (cont'd)

No.	Authors	Title	Date
1005	Fried, E., and B. C. Roy	Gravity-induced segregation of cohesionless granular mixtures – <i>Lecture Notes in Mechanics</i> , in press (2002)	July 2002
1006	Tomkins, C. D., and R. J. Adrian	Spanwise structure and scale growth in turbulent boundary layers – <i>Journal of Fluid Mechanics</i> (submitted)	Aug. 2002
1007	Riahi, D. N.	On nonlinear convection in mushy layers: Part 2. Mixed oscillatory and stationary modes of convection – <i>Journal of Fluid Mechanics</i> 517 , 71–102 (2004)	Sept. 2002
1008	Aref, H., P. K. Newton, M. A. Stremler, T. Tokieda, and D. L. Vainchtein	Vortex crystals – <i>Advances in Applied Mathematics</i> 39 , in press (2002)	Oct. 2002
1009	Bagchi, P., and S. Balachandar	Effect of turbulence on the drag and lift of a particle – <i>Physics of Fluids</i> , in press (2003)	Oct. 2002
1010	Zhang, S., R. Panat, and K. J. Hsia	Influence of surface morphology on the adhesive strength of aluminum/epoxy interfaces – <i>Journal of Adhesion Science and Technology</i> 17 , 1685–1711 (2003)	Oct. 2002
1011	Carlson, D. E., E. Fried, and D. A. Tortorelli	On internal constraints in continuum mechanics – <i>Journal of Elasticity</i> 70 , 101–109 (2003)	Oct. 2002
1012	Boyland, P. L., M. A. Stremler, and H. Aref	Topological fluid mechanics of point vortex motions – <i>Physica D</i> 175 , 69–95 (2002)	Oct. 2002
1013	Bhattacharjee, P., and D. N. Riahi	Computational studies of the effect of rotation on convection during protein crystallization – <i>International Journal of Mathematical Sciences</i> , in press (2004)	Feb. 2003
1014	Brown, E. N., M. R. Kessler, N. R. Sottos, and S. R. White	<i>In situ</i> poly(urea-formaldehyde) microencapsulation of dicyclopentadiene – <i>Journal of Microencapsulation</i> (submitted)	Feb. 2003
1015	Brown, E. N., S. R. White, and N. R. Sottos	Microcapsule induced toughening in a self-healing polymer composite – <i>Journal of Materials Science</i> (submitted)	Feb. 2003
1016	Kuznetsov, I. R., and D. S. Stewart	Burning rate of energetic materials with thermal expansion – <i>Combustion and Flame</i> (submitted)	Mar. 2003
1017	Dolbow, J., E. Fried, and H. Ji	Chemically induced swelling of hydrogels – <i>Journal of the Mechanics and Physics of Solids</i> , in press (2003)	Mar. 2003
1018	Costello, G. A.	Mechanics of wire rope – Mordica Lecture, Interwire 2003, Wire Association International, Atlanta, Georgia, May 12, 2003	Mar. 2003
1019	Wang, J., N. R. Sottos, and R. L. Weaver	Thin film adhesion measurement by laser induced stress waves – <i>Journal of the Mechanics and Physics of Solids</i> (submitted)	Apr. 2003
1020	Bhattacharjee, P., and D. N. Riahi	Effect of rotation on surface tension driven flow during protein crystallization – <i>Microgravity Science and Technology</i> 14 , 36–44 (2003)	Apr. 2003
1021	Fried, E.	The configurational and standard force balances are not always statements of a single law – <i>Proceedings of the Royal Society</i> (submitted)	Apr. 2003
1022	Panat, R. P., and K. J. Hsia	Experimental investigation of the bond coat rumpling instability under isothermal and cyclic thermal histories in thermal barrier systems – <i>Proceedings of the Royal Society of London A</i> 460 , 1957–1979 (2003)	May 2003
1023	Fried, E., and M. E. Gurtin	A unified treatment of evolving interfaces accounting for small deformations and atomic transport: grain-boundaries, phase transitions, epitaxy – <i>Advances in Applied Mechanics</i> 40 , 1–177 (2004)	May 2003
1024	Dong, F., D. N. Riahi, and A. T. Hsui	On similarity waves in compacting media – <i>Horizons in World Physics</i> 244 , 45–82 (2004)	May 2003
1025	Liu, M., and K. J. Hsia	Locking of electric field induced non-180° domain switching and phase transition in ferroelectric materials upon cyclic electric fatigue – <i>Applied Physics Letters</i> 83 , 3978–3980 (2003)	May 2003

List of Recent TAM Reports (cont'd)

No.	Authors	Title	Date
1026	Liu, M., K. J. Hsia, and M. Sardela Jr.	In situ X-ray diffraction study of electric field induced domain switching and phase transition in PZT-5H – <i>Journal of the American Ceramics Society</i> (submitted)	May 2003
1027	Riahi, D. N.	On flow of binary alloys during crystal growth – <i>Recent Research Development in Crystal Growth</i> , in press (2003)	May 2003
1028	Riahi, D. N.	On fluid dynamics during crystallization – <i>Recent Research Development in Fluid Dynamics</i> , in press (2003)	July 2003
1029	Fried, E., V. Korchagin, and R. E. Todres	Biaxial disclinated states in nematic elastomers – <i>Journal of Chemical Physics</i> 119 , 13170–13179 (2003)	July 2003
1030	Sharp, K. V., and R. J. Adrian	Transition from laminar to turbulent flow in liquid filled microtubes – <i>Physics of Fluids</i> (submitted)	July 2003
1031	Yoon, H. S., D. F. Hill, S. Balachandar, R. J. Adrian, and M. Y. Ha	Reynolds number scaling of flow in a Rushton turbine stirred tank: Part I – Mean flow, circular jet and tip vortex scaling – <i>Chemical Engineering Science</i> (submitted)	Aug. 2003
1032	Raju, R., S. Balachandar, D. F. Hill, and R. J. Adrian	Reynolds number scaling of flow in a Rushton turbine stirred tank: Part II – Eigen-decomposition of fluctuation – <i>Chemical Engineering Science</i> (submitted)	Aug. 2003
1033	Hill, K. M., G. Gioia, and V. V. Tota	Structure and kinematics in dense free-surface granular flow – <i>Physical Review Letters</i> 91 , 064302 (2003)	Aug. 2003
1034	Fried, E., and S. Sellers	Free-energy density functions for nematic elastomers – <i>Journal of the Mechanics and Physics of Solids</i> 52 , 1671–1689 (2004)	Sept. 2003
1035	Kasimov, A. R., and D. S. Stewart	On the dynamics of self-sustained one-dimensional detonations: A numerical study in the shock-attached frame – <i>Physics of Fluids</i> (submitted)	Nov. 2003
1036	Fried, E., and B. C. Roy	Disclinations in a homogeneously deformed nematic elastomer – <i>Nature Materials</i> (submitted)	Nov. 2003
1037	Fried, E., and M. E. Gurtin	The unifying nature of the configurational force balance – <i>Mechanics of Material Forces</i> (P. Steinmann and G. A. Maugin, eds.), in press (2003)	Dec. 2003
1038	Panat, R., K. J. Hsia, and J. W. Oldham	Rumpling instability in thermal barrier systems under isothermal conditions in vacuum – <i>Philosophical Magazine</i> , in press (2004)	Dec. 2003
1039	Cermelli, P., E. Fried, and M. E. Gurtin	Sharp-interface nematic-isotropic phase transitions without flow – <i>Archive for Rational Mechanics and Analysis</i> 174 , 151–178 (2004)	Dec. 2003
1040	Yoo, S., and D. S. Stewart	A hybrid level-set method in two and three dimensions for modeling detonation and combustion problems in complex geometries – <i>Combustion Theory and Modeling</i> (submitted)	Feb. 2004
1041	Dienberg, C. E., S. E. Ott-Monsivais, J. L. Ranchoero, A. A. Rzeszutko, and C. L. Winter	Proceedings of the Fifth Annual Research Conference in Mechanics (April 2003), TAM Department, UIUC (E. N. Brown, ed.)	Feb. 2004
1042	Kasimov, A. R., and D. S. Stewart	Asymptotic theory of ignition and failure of self-sustained detonations – <i>Journal of Fluid Mechanics</i> (submitted)	Feb. 2004
1043	Kasimov, A. R., and D. S. Stewart	Theory of direct initiation of gaseous detonations and comparison with experiment – <i>Proceedings of the Combustion Institute</i> (submitted)	Mar. 2004
1044	Panat, R., K. J. Hsia, and D. G. Cahill	Evolution of surface waviness in thin films via volume and surface diffusion – <i>Journal of Applied Physics</i> (submitted)	Mar. 2004
1045	Riahi, D. N.	Steady and oscillatory flow in a mushy layer – <i>Current Topics in Crystal Growth Research</i> , in press (2004)	Mar. 2004
1046	Riahi, D. N.	Modeling flows in protein crystal growth – <i>Current Topics in Crystal Growth Research</i> , in press (2004)	Mar. 2004
1047	Bagchi, P., and S. Balachandar	Response of the wake of an isolated particle to isotropic turbulent cross-flow – <i>Journal of Fluid Mechanics</i> (submitted)	Mar. 2004

List of Recent TAM Reports (cont'd)

No.	Authors	Title	Date
1048	Brown, E. N., S. R. White, and N. R. Sottos	Fatigue crack propagation in microcapsule toughened epoxy – <i>Journal of Materials Science</i> (submitted)	Apr. 2004
1049	Zeng, L., S. Balachandar, and P. Fischer	Wall-induced forces on a rigid sphere at finite Reynolds number – <i>Journal of Fluid Mechanics</i> (submitted)	May 2004
1050	Dolbow, J., E. Fried, and H. Ji	A numerical strategy for investigating the kinetic response of stimulus-responsive hydrogels – <i>Journal of the Mechanics and Physics of Solids</i> (submitted)	June 2004
1051	Riahi, D. N.	Effect of permeability on steady flow in a dendrite layer – <i>Journal of Porous Media</i> , in press (2004)	July 2004
1052	Cermelli, P., E. Fried, and M. E. Gurtin	Transport relations for surface integrals arising in the formulation of balance laws for evolving fluid interfaces – <i>Journal of Fluid Mechanics</i> (submitted)	Sept. 2004
1053	Stewart, D. S., and A. R. Kasimov	Theory of detonation with an embedded sonic locus – <i>SIAM Journal on Applied Mathematics</i> (submitted)	Oct. 2004
1054	Stewart, D. S., K. C. Tang, S. Yoo, M. Q. Brewster, and I. R. Kuznetsov	Multi-scale modeling of solid rocket motors: Time integration methods from computational aerodynamics applied to stable quasi-steady motor burning – <i>Proceedings of the 43rd AIAA Aerospace Sciences Meeting and Exhibit</i> (January 2005), Paper AIAA-2005-0357 (2005)	Oct. 2004
1055	Ji, H., H. Mourad, E. Fried, and J. Dolbow	Kinetics of thermally induced swelling of hydrogels – <i>International Journal of Solids and Structures</i> (submitted)	Dec. 2004
1056	Fulton, J. M., S. Hussain, J. H. Lai, M. E. Ly, S. A. McGough, G. M. Miller, R. Oats, L. A. Shipton, P. K. Shreeman, D. S. Widrevitz, and E. A. Zimmermann	Final reports: Mechanics of complex materials, Summer 2004 (K. M. Hill and J. W. Phillips, eds.)	Dec. 2004
1057	Hill, K. M., G. Gioia, and D. R. Amaravadi	Radial segregation patterns in rotating granular mixtures: Waviness selection – <i>Physical Review Letters</i> 93 , 224301 (2004)	Dec. 2004
1058	Riahi, D. N.	Nonlinear oscillatory convection in rotating mushy layers – <i>Journal of Fluid Mechanics</i> (submitted)	Dec. 2004
1059	Okhuysen, B. S., and D. N. Riahi	On buoyant convection in binary solidification – <i>Journal of Fluid Mechanics</i> (submitted)	Jan. 2005
1060	Brown, E. N., S. R. White, and N. R. Sottos	Retardation and repair of fatigue cracks in a microcapsule toughened epoxy composite – Part I: Manual infiltration – <i>Composites Science and Technology</i> (submitted)	Jan. 2005
1061	Brown, E. N., S. R. White, and N. R. Sottos	Retardation and repair of fatigue cracks in a microcapsule toughened epoxy composite – Part II: <i>In situ</i> self-healing – <i>Composites Science and Technology</i> (submitted)	Jan. 2005
1062	Berfield, T. A., R. J. Ong, D. A. Payne, and N. R. Sottos	Residual stress effects on piezoelectric response of sol-gel derived PZT thin films – <i>Journal of Applied Physics</i> (submitted)	Apr. 2005
1063	Anderson, D. M., P. Cermelli, E. Fried, M. E. Gurtin, and G. B. McFadden	General dynamical sharp-interface conditions for phase transformations in viscous heat-conducting fluids – <i>Journal of Fluid Mechanics</i> (submitted)	Apr. 2005
1064	Fried, E., and M. E. Gurtin	Second-gradient fluids: A theory for incompressible flows at small length scales – <i>Journal of Fluid Mechanics</i> (submitted)	Apr. 2005
1065	Gioia, G., and F. A. Bombardelli	Localized turbulent flows on scouring granular beds – <i>Physical Review Letters</i> , in press (2005)	May 2005