

1904

On A Good Old Trolley Ride

Pat Rooney

Follow this and additional works at: <https://scholarsjunction.msstate.edu/cht-sheet-music>

Preferred Citation

[Physical ID#]: [Title], Charles H. Templeton, Sr. sheet music collection. Special Collections, Mississippi State University Libraries.

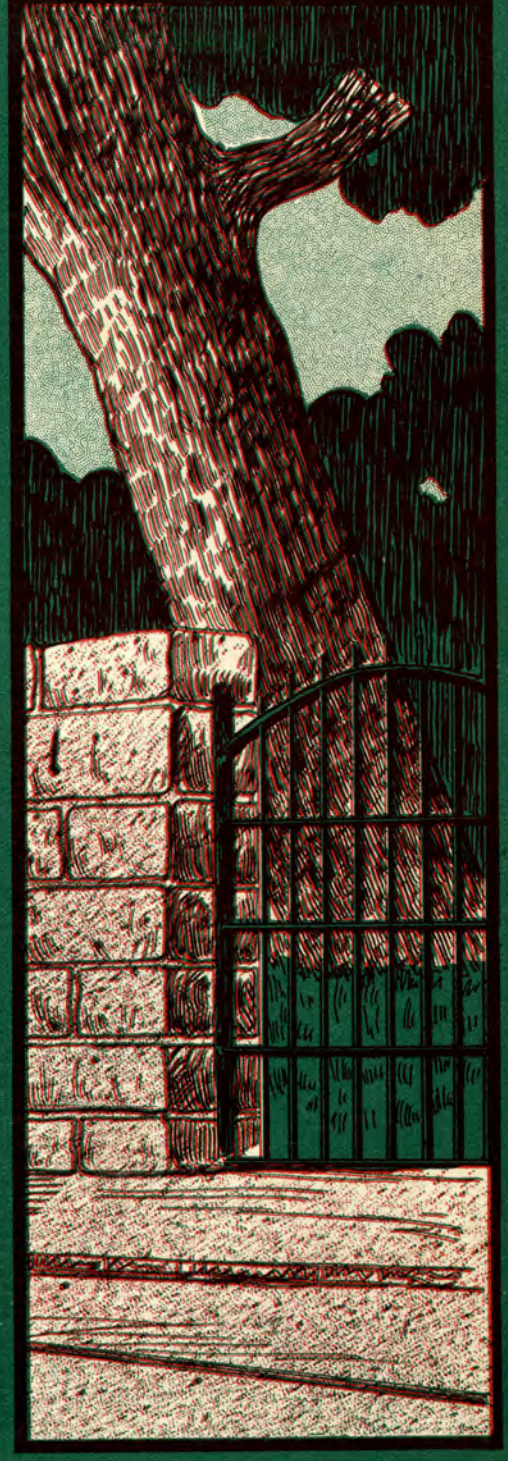
This Sheet Music is brought to you for free and open access by the Charles H. Templeton, Sr. Music Collection at Scholars Junction. It has been accepted for inclusion in Sheet Music Collection by an authorized administrator of Scholars Junction. For more information, please contact scholcomm@msstate.libanswers.com.

Snow 63

ON A GOOD OLD

Snow 63

TROLLEY RIDE



WORDS BY
JOS. C. FARRELL

<p>1440 BROADWAY NEW YORK</p>	<p>HOWLEY, DRESSER COMPANY.</p>	<p>GRAND OPERA- HOUSE BLDG. CHICAGO ST ANN BLDG SAN FRANCISCO CAROLAN BROS MUSIC COMPANY TORONTO CHAS. SHEARD & CO. LONDON</p>
---------------------------------------	--	--

MUSIC BY
PAT. ROONEY

On A Good Old Trolley Ride.

Words by JOS. C. FARRELL.

Music by PAT ROONEY.

Tempo di Valse.

The piano introduction is written for a grand piano in 3/4 time, with a key signature of one flat (B-flat). It begins with a forte (*f*) dynamic. The right hand features a series of chords and a melodic line, while the left hand provides a steady accompaniment with chords and single notes.

The vocal line is written in a single staff in 3/4 time, one flat key signature. It begins with a quarter note followed by eighth notes, then a half note, and ends with a quarter note.

Some-times on Sun-day, for that is my fun day, You'll find me in the
Some folks are wealth-y and I'm on-ly health-y, But health is wealth to

The piano accompaniment for the first part of the lyrics is written in a grand piano (*p*) dynamic. It features a steady accompaniment with chords and single notes in both hands.

The vocal line continues with a half note, then a quarter note, and ends with a quarter note.

park..... Watch-ing the spoon-ers and star gaz-ing moon-ers, Sky-
me..... Pit-y the par-ty who is-n't so heart-y, And

The piano accompaniment for the second part of the lyrics continues with a steady accompaniment, including a melodic line in the right hand and chords in the left hand.

lark - ing aft - er dark,..... But there's a pleas - ure, it's
 can't stand jol - li - ty;..... Keep all your wheel - ing and

one which I treas - ure On Sun - day af - ter - noon,..... Out with my
 au - to - mo - be - ling, That's not the on - ly thing,..... When it is

pearl - ie, my stead - y young girl - ie, This is the on - ly tune.....
 sun - ny just give me my hon - ey, And then you'll hear me sing,.....

CHORUS.

When speeding a - long on the trol - ley,..... I feel like a big mill-ion - aire,..... A

ride on the trol - ley is jol - ly,..... What - ev - er you give up is fare;..... The trol - ley's a

hum - mer in sum - mer,..... If you've got a girl at your side,..... To tease in the

breeze, while you're stealing a squeeze, On a good old five cent trol - ley ride..... When ride.....

"THE DEAN OF THEM ALL"

Paul Dresser

Always before the public with his startling and original sentimental ballads, again astounds the music loving world with this, his latest unique creation

"YOUR MOTHER WANTS YOU HOME, BOY And she wants you 'mighty bad.'"

A Song From the Heart

A Song for the Home

A Song That Will Live

Chorus of the great song and the great singers portraying it



RICHARD JOSE



WILLIAM REDMOND



HARRY TAYLOR



J. ALDRICH LIBBEY



NELLIE FLOREDE

Chorus.

And when the nights are stormy And when the cold winds blow, She



ED. C. YEAGER

stands there by the win - dow With an ach - ing heart I know; She



TOMMY BURNETT

looks in - to the dark - ness With face so pale and sad, Your



FRANK MULLANE

moth - er wants you home, boy, And she wants you might - y bad.



IMOGENE COMER



LILLIAN WALTONE

Copyright, 1904, by the Howley-Dresser Company

FOR SALE BY YOUR MUSIC DEALER