

1927

## Without You Sweetheart

Lew Buford Brown

Buddy Gard De Sylva

Ray Henderson

Follow this and additional works at: <https://scholarsjunction.msstate.edu/cht-sheet-music>

---

### Preferred Citation

[Physical ID#]: [Title], Charles H. Templeton, Sr. sheet music collection. Special Collections, Mississippi State University Libraries.

This Sheet Music is brought to you for free and open access by the Charles H. Templeton, Sr. Music Collection at Scholars Junction. It has been accepted for inclusion in Sheet Music Collection by an authorized administrator of Scholars Junction. For more information, please contact [scholcomm@msstate.libanswers.com](mailto:scholcomm@msstate.libanswers.com).



# WITHOUT YOU SWEETHEART



BY  
B.G. DE SYLVA  
LEW-BROWN  
AND  
RAY HENDERSON

JOHN  
B.  
MAYES

MADE  
IN  
U.S.A.

DE SYLVA, BROWN AND HENDERSON, INC.  
*Music Publishers*

DE SYLVA, BROWN AND HENDERSON BUILDING 745 SEVENTH AVENUE NEW YORK



# WITHOUT YOU SWEETHEART

Tune Ukulele  
 A D F# B  
 Put capo on 1st fret

By  
 B.G. DE SYLVA,  
 LEW BROWN and  
 RAY HENDERSON

Moderato

PIANO

*f*

The piano introduction consists of two staves. The right hand features a series of chords and melodic lines, starting with a forte (*f*) dynamic. The left hand provides a steady accompaniment with quarter notes and rests.

*p*

(Till ready)

The piano continuation continues across two staves. It includes a section marked *p* (piano) and a phrase labeled "(Till ready)" with a fermata over it. The notation includes various chord voicings and melodic fragments.

VOICE

You say that we're through, That there's noth - ing I can do; That 'll  
 It's as plain as day, That you threw my heart a - way; Just a

The vocal line is written on a single staff with guitar chord diagrams above it. The piano accompaniment is on two staves below, providing harmonic support for the vocal melody.

Ukulele Arr. By Joseph M. Weiss

bring things back the way they used to be.  
 brok - en toy, you'll nev - er, nev - er, miss.

You say: "Have your fun, And go out with ev - 'ry - one," I'm a -  
 I sup - pose you've found, There are lots of boys a - round. To a -

fraid it can't be done, so eas - i - ly; That's fine for  
 dore the lips that I once used to kiss. That's fine for

you. But not for me.  
 you. But tell me this:

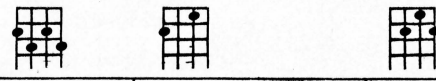


CHORUS (Not fast)



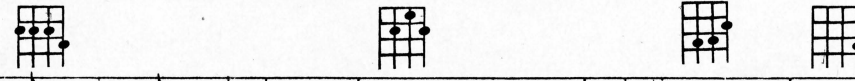
How can I laugh?\_ How can I sing?\_ How can I like\_

*p-f*



An- y old thing, With- out you, sweet - heart?\_

Where can I go\_ When I feel blue?\_ Who do I know?



What can I do\_ With- out you sweet - heart?\_ And tell me,



How can I sing — A - bout to - mor - row? What can it bring? —

— A lot of tears and sor - row! Here is my heart, —

What can I give — Why did we part? — How can I live — With -

out you sweet - heart? — heart? —





# Another DE SYLVA, BROWN AND HENDERSON, INC. Song Hit

## Among My Souvenirs

Words by  
EDGAR LESLIE

Tune Ukulele,  
A D F# B  
Put Capo on 1st fret

Music by  
HORATIO NICHOLLS

Chorus (not fast)

There's no - thing left for me, — Of days that used to be, —  
I live in mem-o - ry a - mong my sou - ven - irs. — Some let - ters  
tied with blue, — A pho - to - graph or two, — I see a rose from you a -

Copyright 1927 by the Lawrence Wright Music Co., London, Eng.  
Copyright for U.S. and Canada assigned 1927 to De Sylva, Brown and Henderson, Inc.  
De Sylva, Brown and Henderson, Building, 745 Seventh Ave., New York  
International Copyright Secured Made in U.S.A. All Rights Reserved

COPIES ON SALE WHEREVER MUSIC IS SOLD  
This Number can also be had for your Phonograph and Player Piano