

1924

Will You Remember Me

Henry W. Santly

Harry Richman

Follow this and additional works at: <https://scholarsjunction.msstate.edu/cht-sheet-music>

Preferred Citation

[Physical ID#]: [Title], Charles H. Templeton, Sr. sheet music collection. Special Collections, Mississippi State University Libraries.

This Sheet Music is brought to you for free and open access by the Charles H. Templeton, Sr. Music Collection at Scholars Junction. It has been accepted for inclusion in Sheet Music Collection by an authorized administrator of Scholars Junction. For more information, please contact scholcomm@msstate.libanswers.com.

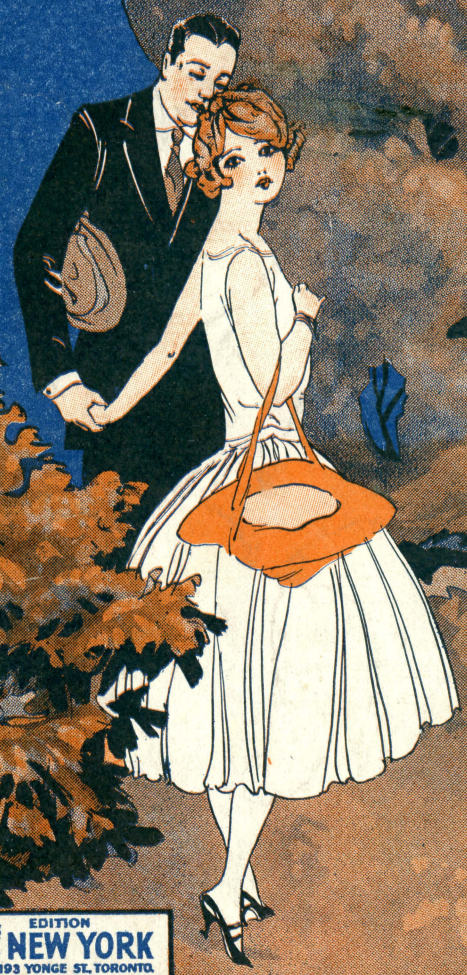
Will You Remember Me?

An Appealing
FOX TROT SONG

With Ukulele
Accompaniment

Words by
LOU DAVIS
Music by
HENRY SANTLY
HARRY RICHMAN

"You can't go wrong
with any Feist song"



Alpha Smith



Successfully
Introduced by
**Harry
Richman**

POPULAR EDITION
LEO FEIST INC. **NEW YORK**
CANADA, LEO FEIST, LIMITED, 193 YONGE ST. TORONTO
FRANCIS, DAY & HUNTER, 138-140 CHANCERY CROSS ROAD, LONDON, E.C.

Another Beautiful Song by the Writers of "I LOVE YOU"

"Suppose I Had Never Met You"

The entrancing Waltz theme so delightfully sung in the Musical Comedy Hit "Little Jessie James."

Lyrics by Harlan Thompson

Music by Harry Archer



REFRAIN (with expression)

Sup - pose I had nev - er met you, dear; Sup -

pose you had nev - er met me; Just sup -

pose some cru - el fate Had made us wait

tempo rubato *a tempo*



Copyright MCMXXIII by LEO. FEIST, Inc., Feist Building, New York

OTHER "FEIST" SONGS YOU WILL ENJOY

"I LOVE YOU" (from "Little Jessie James")
 "ARCADY (Al. Jolson's big hit)
 "LINGER AWHILE"
 "NO, NO, NORA"
 "MAMMA LOVES PAPA"
 "SOMEWHERE IN THE WORLD" (Introduced by
 John McCormack)
 "WHEN LIGHTS ARE LOW"
 "WONDERFUL ONE"

"EVERY NIGHT I CRY MYSELF TO SLEEP
 OVER YOU"
 "EASY MELODY"
 "JOURNEY'S END" (from "Up She Goes")
 "TAKE THOSE LIPS AWAY" (from "Ziegfeld's
 Follies")
 "SWINGIN' DOWN THE LANE"
 "SONG OF LOVE" (from "Blossom Time")

Copies for sale at all music shops or direct at 35c, each, postpaid.
 Published by LEO. FEIST, Inc., Feist Building, New York, N. Y.

Will You Remember Me?

Words by
LOU DAVIS

Fox Trot Song

Ukulele Arr. by
MAY SINGHI BREEN
(*See Note below)

Music by
HENRY SANTLY
and
HARRY RICHMAN

Moderato

The piano introduction consists of two staves. The right hand plays a series of chords and eighth notes, while the left hand plays a steady eighth-note bass line. The key signature has one sharp (F#).

It's good - bye you say, _____
Love dreams now have flown, _____

Part - ing of the way, _____ Mem - 'ry Lane I'll
On the winds they've blown, _____ Still I wan - der

wan - - der, Wond - 'ring night and day _____
night - - ly, As I sit a - lone. _____

Copyright MCMXXIV by LEO.FEIST, Inc., Feist Building, New York
International Copyright Secured and Reserved
London - England, Francis, Day & Hunter, 138 - 140 Charing Cross Road
Toronto - Canada, Leo. Feist Limited, 193 Yonge St.

* Tune Ukulele
G C E A

CHORUS

When ros - - es bloom and spread per - fume, Will

you re - mem - ber me? When

lov - - ers' lane, You stroll a - gain, Will

you re - mem - ber me? When

5581-3

'GOOD OLD TIMERS'

A FOLIO CONTAINING 75 OF THE 'GOOD OLD SONGS' WE ALL LOVE—SUCH AS 'IN THE GOOD OLD SUMMERTIME,'—'WHERE DID YOU GET THAT HAT?' 'ON THE BANKS OF THE WABASH' 'SIDEWALKS OF NEW YORK' 'COMRADES', 'LITTLE ANNIE ROONEY', 'SAY AU REVOIR BUT NOT GOODBYE!'
A SONG FOLIO AS WELL AS A DANCE FOLIO, AND ONLY 50 CENTS FROM YOUR DEALER, OR DIRECT.

BE SURE TO GET IT — YOU'LL NOT REGRET IT!

moon - - beams dance, and bring ro - mance, You'll

think _____ it heav-en - ly _____ But when,

tear - dimmed eyes mean sad good-byes, Will you re-

mem - ber me? _____ When me? _____

5531 - 3

"Feist" Songs are also obtainable from your Dealer for your Talking Machine or Player Piano and for Band, Orchestra, etc.

"You Can't Go Wrong With These 'Feist' Songs"



A GLORIOUS LOVE SONG

DEAR ONE

By MARK FISHER
CY RICHARDSON
and JOE BURKE

CHORUS

Dear one, my dear one, Words can-not
tell how I love you; Dear one, my dear
one, True as the blue skies a-bove you.

Copyright MCMXXIV by LEO. FEIST, Inc., Feist Building, New York

A TUNE THAT'LL SURPRISE YA!

ELIZA

Lyric by

GUS KAHN

CHORUS

Music by

TED FIORITO

E li - za with those eyes that look so dream-y 'Li -
za, do they shine be - cause they see me; You won't say yes -
You won't say no - You keep me guess - - ing so

Copyright MCMXXIV by LEO. FEIST, Inc., Feist Building, New York



OTHER "FEIST" SONGS YOU WILL ENJOY

"BURNING KISSES"
"HAUNTING MELODY"
"ROCK-A-BYE BABY DAYS"
"ADORING YOU" (Ziegfeld Follies)
"DOODLE-DOO-DOO"
"DON'T BLAME IT ALL ON ME"
"HONEST AND TRULY"
"I LOVE YOU" (from Little Jessie James)
"JUNE NIGHT"

"MAY TIME"
"MOONLIGHT MEMORIES"
"SING A LITTLE SONG"
"SONG OF LOVE" (from "Blossom Time")
"THE PAL THAT I LOVED STOLE THE GAL THAT I LOVED"
"WHERE THE DREAMY WABASH FLOWS"
"SOME ONE LOVES YOU AFTER ALL" (from "Kid Boots")

Get them for your Piano, Talking Machine and Player Piano

"Feist songs" are on sale wherever music is sold or we will supply you direct at 35 cents a copy, postpaid, (Any 3 for \$1.00)

LEO. FEIST, Inc.

FEIST BLDG., 231 W. 40th St.

NEW YORK

CANADA: Leo Feist, Limited, 193 Yonge St., Toronto.

"You Can't Go Wrong With Any 'Feist' Song"