

1913

I'm Going To Steal You From Your Ma

Paul Oesting

Len Gray

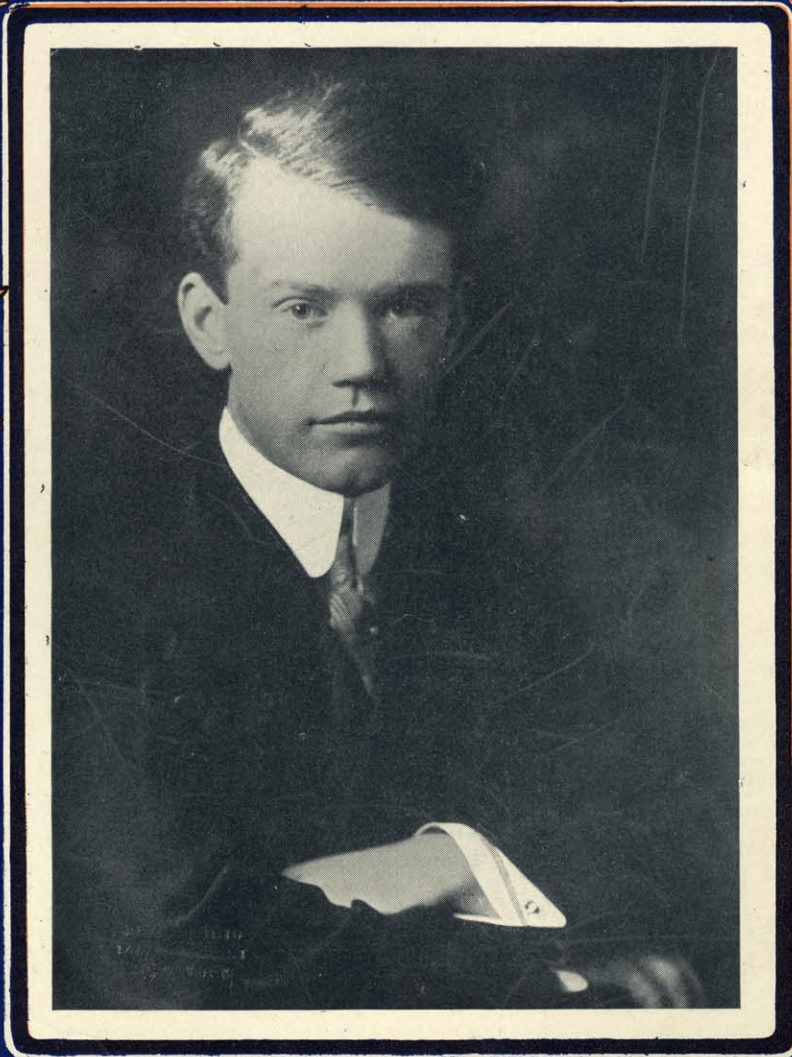
Follow this and additional works at: <https://scholarsjunction.msstate.edu/cht-sheet-music>

Preferred Citation

[Physical ID#]: [Title], Charles H. Templeton, Sr. sheet music collection. Special Collections, Mississippi State University Libraries.

This Sheet Music is brought to you for free and open access by the Charles H. Templeton, Sr. Music Collection at Scholars Junction. It has been accepted for inclusion in Sheet Music Collection by an authorized administrator of Scholars Junction. For more information, please contact scholcomm@msstate.libanswers.com.

I'M GOING TO STEAL YOU FROM YOUR MA



DEDICATED TO AND SUNG BY EDDIE PHELAN

PAUL DESTING AND LEN GRAY

LEN GRAY MUSIC PUBLISHING CO.
5 SOUTH 6th ST. NEW BEDFORD MASS.

I'M GOING TO STEAL YOU FROM YOUR MA

3

By PAUL OESTING and LEN GRAY

Moderato

The piano introduction consists of two systems. The first system is marked 'Moderato' and features a right-hand melody with eighth-note patterns and a left-hand accompaniment of chords. The second system is marked 'Vamp' and features a right-hand melody with triplet eighth notes and a left-hand accompaniment of chords. Dynamics include *f* and *p*.

1. What seems to be the mat - ter now, my hon - ey, Tears in your eyes of
2. I've seen the par - son and he's prom - ised, dear - ie, He's going to use us

The vocal line is in a single staff with lyrics underneath. The piano accompaniment is in two staves. Dynamics include *p*.

blue, _____ Some - thing must troub - le you I
right, _____ I've got the li - cense and the

The vocal line continues with lyrics. The piano accompaniment includes triplet markings in the right hand.

know, my hon - ey, Some - one's been cross with you, _____
ring so, dear - ie, Meet me to - mor - row night, _____

The vocal line concludes with lyrics. The piano accompaniment features a final chord with a fermata.

What's that you say your ma won't let you meet me, Well dear-ie, don't you care, ———
I'll wait for you when twi-light shades are fall-ing, Down in old lov-ers' lane, ———

I've got a scheme that I think is a dream And I know you'll a-gree its a bear. ———
Don't you for-get or you'll sure-ly re-gret So just lis-ten while I sing a-gain. ———

CHORUS

"I'm going to steal you from your moth-er, dear-ie, I'm going to car-ry you a -
pf

way. ——— Like a knight of old I'm going to per-pe-trate the deed, — A

I'm going to steal you &c. 3

clas - sy lit - tle run - a - bout will be my steed; I'm going to take you to my

cas - tle, dear - ie, A cot - tage where the sweet - est ros - es are, ————— And

ad lib.
if you dare re - sist me love, I'll smoth - er you with kis - ses, love, For

I'm going to steal you from your ma.' — 1. ————— 2. ————— ma.' —

I'm going to steal you &c. 3