

1922

I Gave You Up Just Before You Threw Me Down

Fred E. Ahlert

Follow this and additional works at: <https://scholarsjunction.msstate.edu/cht-sheet-music>

Preferred Citation

[Physical ID#]: [Title], Charles H. Templeton, Sr. sheet music collection. Special Collections, Mississippi State University Libraries.

This Sheet Music is brought to you for free and open access by the Charles H. Templeton, Sr. Music Collection at Scholars Junction. It has been accepted for inclusion in Sheet Music Collection by an authorized administrator of Scholars Junction. For more information, please contact scholcomm@msstate.libanswers.com.

I GAVE YOU UP JUST BEFORE YOU THREW ME DOWN



BY **BERT KALMAR**
HARRY RUBY -and
FRED E. AHLERT

MADE
IN
U.S.A.

Waterson Berlin & Snyder Co.
STRAND
THEATRE
BUILDING
NEW YORK

Barbelle

Try this over on your Piano

The First Waltz

(Belongs To Me)

Words by
BILLY CURTIS

Music by
J. RUSSEL ROBINSON

Piano

Valse moderato



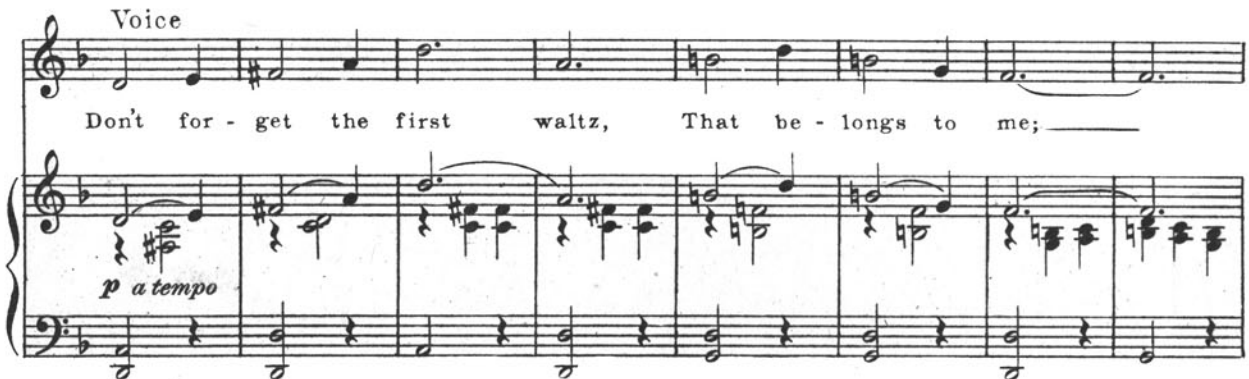
f *rit.*

The piano introduction is in 3/4 time, starting with a treble clef and a key signature of one flat (B-flat). It begins with a forte (*f*) dynamic and a 'Valse moderato' tempo. The melody is in the right hand, featuring a series of eighth and sixteenth notes, while the left hand provides a simple harmonic accompaniment. The piece concludes with a 'rit.' (ritardando) marking and a final chord.

Voice

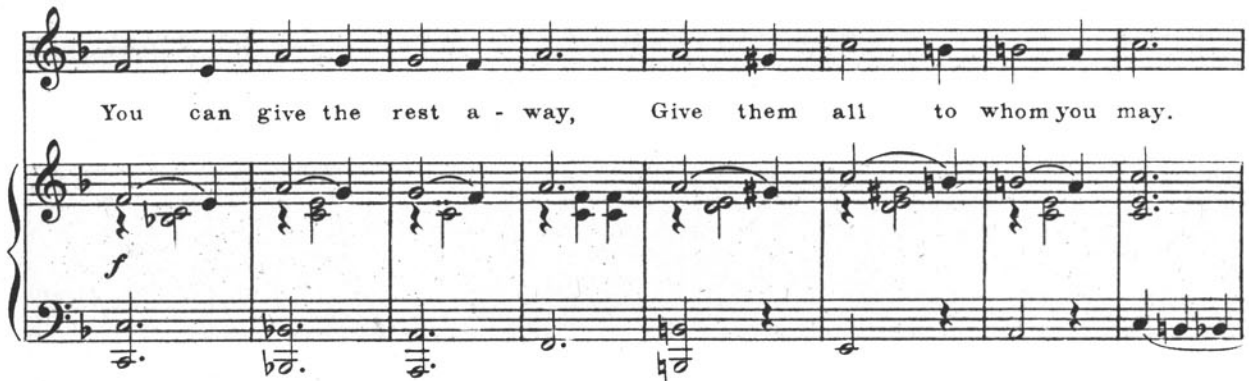
Don't for - get the first waltz, That be - longs to me; ———

p a tempo




The first line of the song features a vocal melody in the treble clef and piano accompaniment in the grand staff. The lyrics are 'Don't for - get the first waltz, That be - longs to me;'. The piano part starts with a piano (*p*) dynamic and a 'a tempo' marking. The key signature remains one flat, and the time signature is 3/4.

You can give the rest a - way, Give them all to whom you may.



The piano accompaniment for the second line continues the harmonic support for the vocal melody. It maintains the same key signature and time signature, with a dynamic of piano (*p*).

Waltz - es are for sweet - hearts, And they'll al - ways be; ——— So



The piano accompaniment for the third line continues the harmonic support for the vocal melody. It maintains the same key signature and time signature, with a dynamic of piano (*p*).

1277-3

Copyright MCMXXIII by Waterson, Berlin & Snyder Co.
Copyright Canada MCMXXIII by Waterson, Berlin & Snyder Co.
International Copyright Secured

Complete Copies may be had where you bought this

I Gave You Up Just Before You Threw Me Down

3

By BERT KALMAR
HARRY RUBY and
FRED E. AHLERT

Moderato

Piano



f *f^s*

The piano introduction consists of two staves. The right hand starts with a series of chords and eighth notes, while the left hand provides a steady bass line. The tempo is marked 'Moderato' and the dynamics range from *f* to *f^s*.

Voice

Till Ready

p *p*

Ev - 'ry - bod - y knew, How I cared for
There are times when I, Sit and won - der



The first system shows the vocal line and piano accompaniment. The piano part is marked *p* and features a rhythmic accompaniment. The vocal line begins with a rest, then enters with the lyrics. The piano accompaniment includes a section marked *Till Ready*.


you. Tho' de - ceived, I be - lieved, That you loved me too.
why; I felt blue — Ov - er you, — When I said "good - bye"

L.H.



The second system continues the vocal line and piano accompaniment. The piano part includes a section marked 'L.H.' (Left Hand). The lyrics are: 'you. Tho' de - ceived, I be - lieved, That you loved me too. why; I felt blue — Ov - er you, — When I said "good - bye"'

It was not to be, I look back and see;
For a while I cried, Now I'm sat - is - fied;



The third system continues the vocal line and piano accompaniment. The lyrics are: 'It was not to be, I look back and see; For a while I cried, Now I'm sat - is - fied;'

How you lied — how you tried — To get rid of me. —
 You're to blame — 'twas your aim — To cast me a - side. —

Chorus

But I gave you up — just be-fore — you threw me down; —

p-f

You'll see a smile — where you thought — you'd see a frown. — Don't

try to de - ny — that you fooled — me from the start; — You

broke each vow, — And I know now — You meant to break my heart. — It's

luck - y for me — that I beat — you at your game, — Or

you'd have it all — ov - er town. — You thought you'd

laugh at me, it's true, — But I've got — the laugh on you; — 'Cause

I gave you up — just be-fore — you threw me down. — But

D.S.

The Latest Sensational Song Hit
I'LL BE IN MY DIXIE HOME AGAIN

TOMORROW

By Roy Turk & J. Russel Robinson

CHORUS

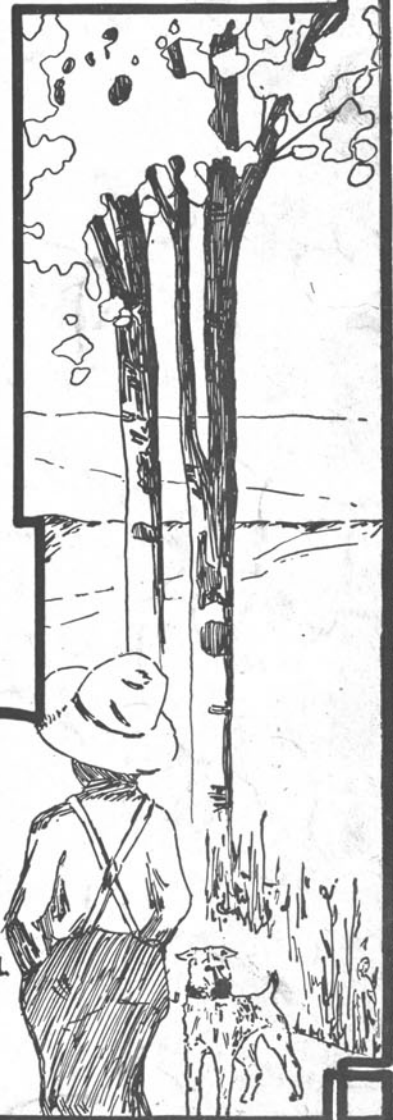
To - mor - row, to mor - row, How hap - py I will be, To mor - row, to -

mor - row, Back on my mam - my's knee. Lawd - y met what a great de - light, - When I

get a fa - mil - iar sight, - Of the fuz - zy old cat sneak - in' from the sta - ble,

Lick - in' up milk on the kitch - en ta - ble. I know, to - mor - row, A pair of lov - ing

Copyright MCMXXII by Waterson, Berlin & Snyder Co.
Copyright Canada MCMXXII by Waterson, Berlin & Snyder Co.
International Copyright Secured



THIS SONG FOR SALE AT ALL MUSIC DEALERS
OR SENT DIRECT BY THE PUBLISHER ON RECEIPT OF 35¢
ALSO OBTAINABLE ON ALL PHONOGRAPH RECORDS AND MUSIC ROLLS
A LIST OF LATEST SONG HITS SENT ON REQUEST

WATERSON, BERLIN & SNYDER CO. STRAND BLDG, NEW YORK.