

1915

## That Eccentric Rag

J. Russel Robinson

Follow this and additional works at: <https://scholarsjunction.msstate.edu/cht-sheet-music>

---

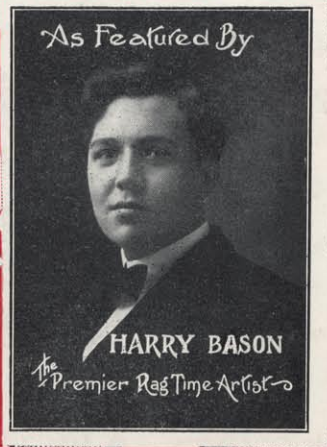
### Preferred Citation

[Physical ID#]: [Title], Charles H. Templeton, Sr. sheet music collection. Special Collections, Mississippi State University Libraries.

This Sheet Music is brought to you for free and open access by the Charles H. Templeton, Sr. Music Collection at Scholars Junction. It has been accepted for inclusion in Sheet Music Collection by an authorized administrator of Scholars Junction. For more information, please contact [scholcomm@msstate.libanswers.com](mailto:scholcomm@msstate.libanswers.com).

# THAT ECCENTRIC RAG

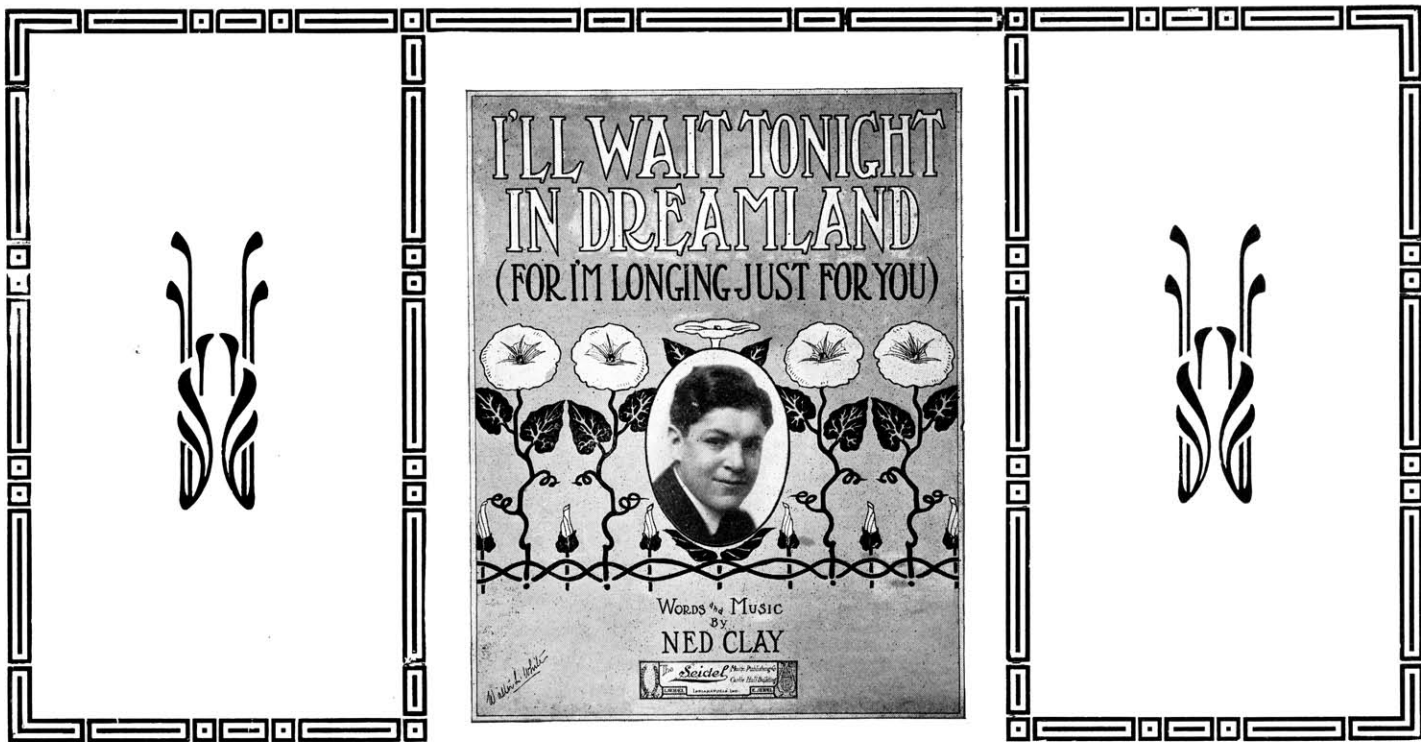
By J. RUSSEL  
ROBINSON  
Author of  
*Te - Na - Na*  
AND  
THE MINSTREL MAN



BATES MUSIC CO.  
132 MAIN ST.  
SANDPOINT, IDAHO



SEIDEL MUSIC PUBLISHING CO. Inc.  
INDIANAPOLIS, IND.



Send 2 cent Stamp for catalog of all the Latest Music

Send for Orchestra Catalog

**All of these are on sale at your favorite music department**

**Our Newest Hesitations**

Barcarolle Waltzes  
Isle of Love (I Love Love)

**Most Beautiful Ballads in Years**

When the Moon Shines Down on Lonesome Town  
Aloha Oe (Farewell to Thee)  
Eileen (from Old Killarney)  
When Twilight Comes  
For You  
When Vesuvius Loses Its Fire  
Just a Dream at Dawn  
Then You'll Love Me Too  
Pal O' Mine  
No One Can Take Your Place  
Forevermore  
Dreams  
I'll Wait Tonight In Dreamland  
As the Petals Fall from the Rose  
As the Day Fades Away I Want You  
The Violet and the Rose  
I Love You Because You are You  
At Evening Time When Loneliness Comes 'Round  
Dream Face  
When You Dream of the Girl  
Just Like a Mother

**Novelty Songs**

Caroline  
Oh You Irresistible Child  
Meet Me at the Meat Market, Winnie  
That Melody Waltz  
If You Love Me Call Me Sweetheart

**Big Instrumental Rag "Hits"**

Chattanooga Blues  
That Eccentric Rag  
That Demon Rag

**Two Beautiful Sacred Songs**

Alone With Thee  
The Organ and the Choir

**A Delightful Novelette**

Crushes and Blushes

**Exquisite New Reveries**

Hope  
Belfrey Chimes

**March and Two-Steps**

Lavender and Cream  
The Air Line  
Thoroughbreds

**The New Rag Song "Hits"**

Syncopation Isle  
On the Eight O'clock Train  
Everything He Does Just Pleases Me

**Syncopated Waltzes**

Eileen  
Alhambra  
Aloha Oe (Farewell to Thee)

**SEIDEL MUSIC PUBLISHING CO. INC.**  
INDIANAPOLIS, IND.

# THAT ECCENTRIC RAG.

J. RUSSEL ROBINSON.

Composer of *Te-na-na.*  
*Cornfield Rag.*  
*Minstrel Man Rag.*

Moderato.

\* N.B. Grace notes may be played by left hand if bass is omitted.

Copyright MCMXII by The Seidel Music Pub. Co.  
All rights reserved. International Copyright Secured. Indianapolis, Ind.

Copyright MCMXV by Seidel Music Publishing Co., Inc.

Player roll, 88 note, will be furnished postpaid upon receipt of 30c.

**FREE**—We will send you, on request, our Catalog of all the Latest Sheet Music and Player Rolls  
Get "EILEEN from Old Killarney" for your player piano

Eccentric Rag - 3

Hear these Syncopated Waltzes  
 "ALOHA OE"  
 "ALHAMBRA"  
 "EILEEN" From Old Killarney

Eccentric Rag - 3

WALTON PROCESS CHICAGO

Hear the Beautiful Reveaies  
**“BELFREY CHIMES”**  
**“HOPE”**

**THIS  
 COUPON  
 and 10 cents**

will be accepted for a complete sheet  
 music copy of the GREAT IRISH BALLAD  
**“EILEEN”** From Old  
 Killarney  
**THE GREATEST IRISH BALLAD WRITTEN**

Name \_\_\_\_\_

Address \_\_\_\_\_

P. S. We can furnish you with any sheet music published. Send 2c stamp  
 for catalog to SEIDEL MUSIC PUBLISHING CO., INDIANAPOLIS, IND.

THE ORIGINAL

# EI - LEEN

FROM  
OLD  
KILLARNEY

VOCAL      INSTRUMENTAL      (Syncopated Waltzes)

Positively the Prettiest Irish Ballad Ever Written. Arranged both Instrumentally and Vocally.

Ask to Hear This at Your Music Dealers.

CHORUS

Ei - leen, my Ei - leen, from old Kil - lar - ney,

The musical score for the chorus consists of two systems. The first system shows the vocal line on a treble clef staff with a key signature of two flats and a 3/4 time signature. The lyrics are written below the notes. The second system shows the piano accompaniment on a grand staff (treble and bass clefs), featuring a syncopated waltz rhythm with chords and moving lines in both hands.

## The Greatest Irish Ballad since "RIVER SHANNON"

HAVE YOU EVER HEARD A MORE BEAUTIFUL ENDING?

Call - ing for you, sweet Ei - leen, my Ei - leen.

*cresc.*

The musical score for the ending consists of two systems. The first system shows the vocal line on a treble clef staff, with the lyrics written below. The second system shows the piano accompaniment on a grand staff, featuring a crescendo and a final, beautiful ending with sustained chords and melodic lines.

FOR SALE AT ALL MUSIC STORES OR SEND 30 CENTS TO THE PUBLISHERS.

**The Seidel Music Publishing Co., Indianapolis, Ind.**