

2-1-1955

Weather records at State College, Miss.

John C. McWhorter

Follow this and additional works at: <https://scholarsjunction.msstate.edu/mafes-bulletins>

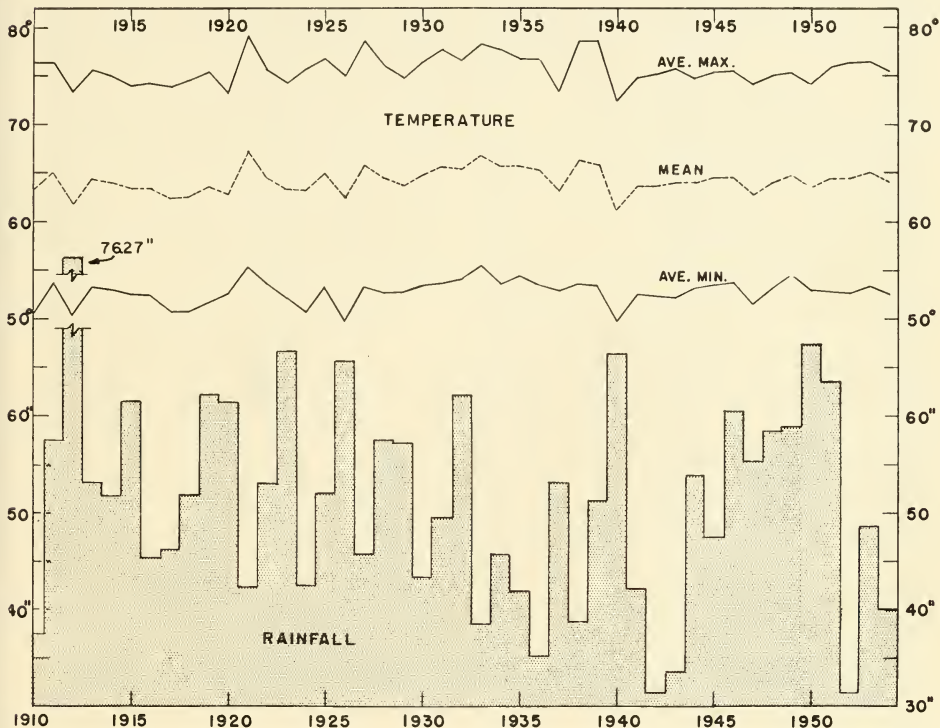
Recommended Citation

McWhorter, John C., "Weather records at State College, Miss." (1955). *Bulletins*. 881.
<https://scholarsjunction.msstate.edu/mafes-bulletins/881>

This Article is brought to you for free and open access by the Mississippi Agricultural and Forestry Experiment Station (MAFES) at Scholars Junction. It has been accepted for inclusion in Bulletins by an authorized administrator of Scholars Junction. For more information, please contact scholcomm@msstate.libanswers.com.

WEATHER RECORDS

At State College, Miss.



The coolest year on record at State College was 1940, with an average temperature of 61.1 degrees. The year 1921 produced the warmest temperatures when an average of 67.3 degrees was recorded. This was 3.2 degrees above the 45-year average of 64.1; whereas, the 1940 temperature was 3 degrees below average.

The yearly rainfall varied from 31.32 inches in 1952 to 76.27 inches in 1912. The 66-year average is 50.84 inches.

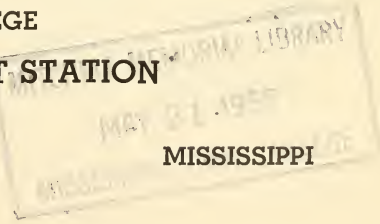
MISSISSIPPI STATE COLLEGE

AGRICULTURAL EXPERIMENT STATION

CLAY LYLE, Director

STATE COLLEGE

MISSISSIPPI



Average annual temperature and total annual rainfall.

Year	Average temperature in degrees			Total annual rainfall in in.
	Max.	Min.	Means	
1910	76.3	50.7	63.5	37.46
1911	76.4	53.9	65.2	57.52
1912	73.4	50.3	61.9	76.21
1913	75.8	53.3	64.5	53.13
1914	75.1	53.0	64.0	51.87
1915	74.0	52.5	63.3	61.48
1916	74.2	52.3	63.3	45.20
1917	73.9	50.8	62.3	46.24
1918	74.6	50.7	62.6	51.97
1919	75.3	51.8	63.5	62.62
1920	73.2	52.6	62.9	61.21
1921	79.3	55.3	67.3	43.23
1922	75.6	53.8	64.7	53.06
1923	74.2	52.2	63.2	66.61
1924	75.8	50.6	63.2	42.53
1925	76.8	53.1	65.0	52.93
1926	75.0	49.8	62.4	65.66
1927	78.7	53.2	65.9	45.85
1928	76.0	52.8	64.4	57.61
1929	74.8	52.8	63.8	57.31
1930	76.3	53.5	64.9	43.27
1931	77.7	53.8	65.8	49.63
1932	76.7	54.1	65.4	62.08
1933	78.3	55.5	66.9	38.58
1934	77.7	53.8	65.8	45.84
1935	76.9	54.4	65.7	41.94
1936	76.8	53.5	65.2	35.25
1937	73.3	53.0	63.2	53.13
1938	78.7	53.8	66.2	38.94
1939	78.6	53.3	65.9	51.35
1940	72.3	49.8	61.1	66.30
1941	74.8	52.6	63.7	42.09
1942	75.1	52.3	63.7	31.38
1943	75.8	52.2	64.0	33.67
1944	74.9	53.1	64.0	53.98
1945	75.3	53.5	64.4	47.53
1946	75.4	53.8	64.6	60.39
1947	74.2	51.6	62.9	55.36
1948	75.0	53.2	64.1	58.54
1949	75.3	51.6	64.9	59.01
1950	74.2	53.0	63.5	67.37
1951	76.0	52.9	64.4	63.43
1952	76.4	52.8	64.6	31.32
1953	76.6	53.4	65.0	48.58
1954	75.5	52.7	64.1	40.08
45 year average	75.7	52.8	64.3	50.84

Weather Records At State College, Miss.

By J. C. McWHORTER

The weather is of interest to every inhabitant of the world, since it affects his comfort, health, work, and many other activities. The farmer has a particular interest in weather and its variations. It affects practically every aspect of his operations from day to day; therefore, he regards the daily and long range weather forecast as a guide to planning.

It would be invaluable if future weather conditions could be foretold with certainty. Although this is not now possible, analysis and study of past records may reveal various weather trends. Frequently studies indicate how often a given quantity of precipitation in a certain period of time, and drought periods of certain duration, may be expected.

Weather Observation

The weather station at State College, Mississippi, is one of thousands of cooperative observation stations in the United States furnishing data to the U. S. Weather Bureau. Operated by the Mississippi Agricultural Experiment Station, it has records of precipitation and temperatures dating from January, 1910. Monthly precipitation records are available beginning with January, 1889.

It is generally conceded that annual rainfall in this area is sufficient, but distribution throughout the year frequently is unfavorable for crop production. Therefore, the value of annual records can be enhanced greatly by a

ACKNOWLEDGMENTS

Throughout the years many Experiment Station staff members have accumulated this weather data. The list includes: W. R. Perkins, E. R. Lloyd, J. R. Ricks, Charles F. Briscoe, T. N. Jones, Russell Woodburn, and R. F. Dudley.

study of weather conditions by months. For this reason the Mississippi Agricultural Experiment Station has assembled and is publishing this long-time record of temperature and rainfall. By showing what the weather has been each month throughout the years, the records indicate what may reasonably be expected in the future.

Temperature Records

Temperature records are presented in degrees Fahrenheit as average monthly maximum, average monthly minimum, mean monthly, and average annual temperature; and are determined as follows:

Average monthly maximum is the sum of daily maximums divided by the number of days in month.

Average monthly minimum is the sum of daily minimums divided by the number of days in month.

The mean monthly temperature is the mean of the average monthly maximums and minimums. The average annual temperature is the mean of the 12 monthly mean values.

Precipitation Records

The term precipitation includes rain, snow, hail, and sleet—all forms of moisture that fall from the clouds. For all practical purposes, precipitation as reported at State College means rainfall as there is little snow, hail or sleet. Rainfall is expressed in inches and hundredths of inches of water depth; and snow, hail and sleet are converted to their equivalent depth of water.

Rainfall records (meaning total precipitation in this report) are presented as monthly, annual, average monthly, and average annual amounts.

Temperature records at State College, 1910-1954.

Year	January		February		March		April		May		June	
	Ave. Max.	Ave. Min.	Ave. Max.	Ave. Min.	Ave. Max.	Ave. Min.	Ave. Max.	Ave. Min.	Ave. Max.	Ave. Min.	Ave. Max.	Ave. Min.
1910	57	34	55	32	78	50	77	49	86	52	87	63
1911	60	40	64	45	71	46	74	52	87	60	90	69
1912	51	22	56	31	61	41	76	53	85	60	85	63
1913	61	40	54	36	65	43	74	51	84	59	93	67
1914	59	37	56	35	62	41	76	52	84	60	97	72
1915	52	33	60	38	58	36	80	52	86	61	83	68
1916	59	41	58	33	68	46	74	51	85	62	83	65
1917	59	41	59	39	65	45	75	52	79	51	90	66
1918	46	24	63	35	75	47	64	48	85	61	93	71
1919	55	30	61	30	68	38	75	45	79	59	88	68
1920	56	36	55	37	63	42	71	52	82	63	88	67
1921	60	39	62	39	75	52	77	51	83	59	94	69
1922	55	36	61	42	66	45	78	54	85	61	91	65
1923	60	40	54	37	64	41	71	51	76	58	88	64
1924	53	28	59	36	62	39	75	53	81	56	94	69
1925	56	35	64	38	71	44	78	56	81	56	94	73
1926	54	33	64	38	60	38	72	45	83	57	90	65
1927	61	38	64	47	66	43	81	49	82	55	91	68
1928	58	36	61	37	69	46	74	48	83	60	88	67
1929	57	37	51	34	70	49	78	56	83	61	91	61
1930	53	34	67	43	64	43	79	54	83	63	92	66
1931	56	36	62	40	61	40	85	50	80	57	95	67
1932	63	42	70	48	64	40	79	54	82	59	93	69
1933	64	43	58	38	68	43	76	54	88	68	94	68
1934	61	39	57	33	69	42	79	53	84	60	93	70
1935	57	39	60	39	75	51	75	54	83	62	89	67
1936	52	32	53	29	74	48	76	49	86	61	98	69
1937	62	45	57	37	60	40	76	53	85	63	92	69
1938	58	34	68	44	76	53	76	53	86	62	90	67
1939	62	38	79	40	72	47	74	52	83	60	90	67
1940	41	20	54	34	67	43	74	51	80	56	86	66
1941	59	35	52	33	60	38	77	55	86	60	91	67
1942	55	30	52	34	66	44	78	52	83	59	89	68
1943	58.4	35	63.1	39.2	63.5	40.8	77.3	51.9	86.6	63.7	93.7	71.5
1944	55	36	61	44	67	45	72.4	51	83	61	93.8	69.6
1945	54	35.7	60.4	40.8	74.9	52.9	76.8	54.1	80.3	57.8	90.1	67.5
1946	54.6	37.4	64.1	38.3	71.1	50.3	79	55.5	78.9	59.8	86.2	66.3
1947	57.5	38.5	54.3	26.6	59.1	37.1	75.6	53.7	81.5	57.4	87.4	66.1
1948	48.5	28.7	57.2	38.6	67.9	47.5	79.2	56.1	84.9	59.7	92.7	68.3
1949	62.9	44.3	61.3	43.2	66.6	44.9	72.6	52.3	84.2	61.6	87.4	68.8
1950	68.1	48.4	65	41.3	65.2	41.6	72.2	47.2	84.2	66.7	87.6	68.1
1951	58.2	35.6	60.1	36.6	67.3	46.6	73.6	50.0	84.4	58.4	88.3	69.0
1952	63.3	44.2	62.8	43.6	65.8	43.0	73.4	49.3	84.1	59.8	95.9	70.8
1953	59.8	39.9	61.1	38.7	70.7	48.5	74.1	49.1	83.5	64.1	95.1	71.9
1954	57.8	36.6	67.8	41.6	67.9	43.4	79.6	56.7	77.7	56.0	93.4	68.2
Ave.	57.1	36.2	60.2	37.9	67.1	44.1	75.5	51.8	83.1	59.7	90.7	67.7

Temperature records at State College, 1910-1954.

July		August		September		October		November		December		Year
e. x.	Ave. Min.	Ave. Max.	Ave. Min.	Ave. Max.	Ave. Min.	Ave. Max.	Ave. Min.	Ave. Max.	Ave. Min.	Ave. Max.	Ave. Min.	
	68	93	68	94	65	81	54	65	41	54	32	1910
	70	89	69	95	68	78	53	63	37	58	38	1911
	70	90	68	88	66	79	55	66	37	54	38	1912
	72	96	71	85	64	76	52	71	47	55	38	1913
	72	91	71	87	64	77	56	67	42	48	34	1914
	68	90	69	89	66	79	56	68	45	57	38	1915
	73	91	69	86	59	81	52	62	40	59	37	1916
	66	88	68	82	64	76	46	65	41	50	30	1917
	69	95	70	84	58	76	57	63	38	61	30	1918
	70	91	71	88	64	83	63	67	46	57	38	1919
	70	89	68	87	66	81	54	60	40	55	36	1920
	72	94	73	96	71	79	50	73	47	63	41	1921
	69	92	67	90	65	72	53	65	45	60	43	1922
	68	92	69	90	64	75	51	66	41	62	42	1923
	67	97	70	85	60	81	51	71	43	56	35	1924
	70	95	70	95	70	74	52	63	41	55	32	1925
	67	92	70	93	66			61	30	61	36	1926
	71	95	69	93	60	84	55	71	49	59	34	1927
	71	93	71	86	61	84	57	65	43	58	36	1928
	69	94	68	86	65	76	54	60	44	58	36	1929
	72	94	69	89	66	74	52	65	45	54	35	1930
	71	89	68	91	67	83	56	74	49	63	45	1931
	73	94	71	85	64	76	51	62	41	56	37	1932
	71	92	69	93	69	80	53	70	45	67	45	1933
	73	96	73	89	63	81	56	70	47	57	37	1934
	72	98	72	92	65	83	57	65	45	51	30	1935
	72	96	71	95	72	78	53	59	41	60	45	1936
	69	92	72	82	62	68	49	60	42	55	35	1937
	72	95	72	91	67	84	46	70	38	57	37	1938
	71	91	69	90	66	81	53	64	38	64	38	1939
	69	89	68	86	59	80	50	65	41	61	41	1940
	70	90	69	89	65	81	60	64	40	59	39	1941
	72	90	69	86	62	80	52	71	47	57	38	1942
7	71.7	96	71	83	61	75	49	64	37	54.4	34.7	1943
6	68.1	89.9	70	86.4	64.1	79.5	49.7	64.6	44.6	53.6	34	1944
2	69	91.8	68.4	89.8	66.3	75.8	51.3	68.1	46.2	49.7	32.2	1945
7	70.3	87.9	67	84.1	62.5	79	50.8	69.3	48	62.5	38.2	1946
9	65.2	93.4	70	88.8	65	82.5	58.7	61.8	43.4	59.3	37.1	1947
4	72.1	90.3	68.9	82.7	62.5	76.4	48.5	65.6	46.3	59.8	41	1948
4	71.9	89.2	69.2	83	62.1	76.9	59.1	67.9	40.4	60.6	37.4	1949
8	68.5	87	66.6	81.1	64	78.9	55.7	62.1	37	51	31.3	1950
5	71.0	95.6	71.1	88.0	65.0	79.6	54.1	61.8	37.0	62.5	40.2	1951
9	70.6	93.4	68.6	86.4	60.3	73.3	43.8	64.9	41.7	56.6	36.9	1952
9	71.2	92.1	68.9	89.5	61.5	82.0	51.8	67.1	40.1	54.0	34.7	1953
7	72.7	99.2	72.8	93.8	65.6	79.5	54.4	65.0	41.2	56.6	35.1	1954
2	70.3	92.4	69.6	88.3	64.3	76.9	51.9	65.7	4.22	57.4	36.9	Ave.

Rainfall by months at State College, Mississippi, 1889-1954.

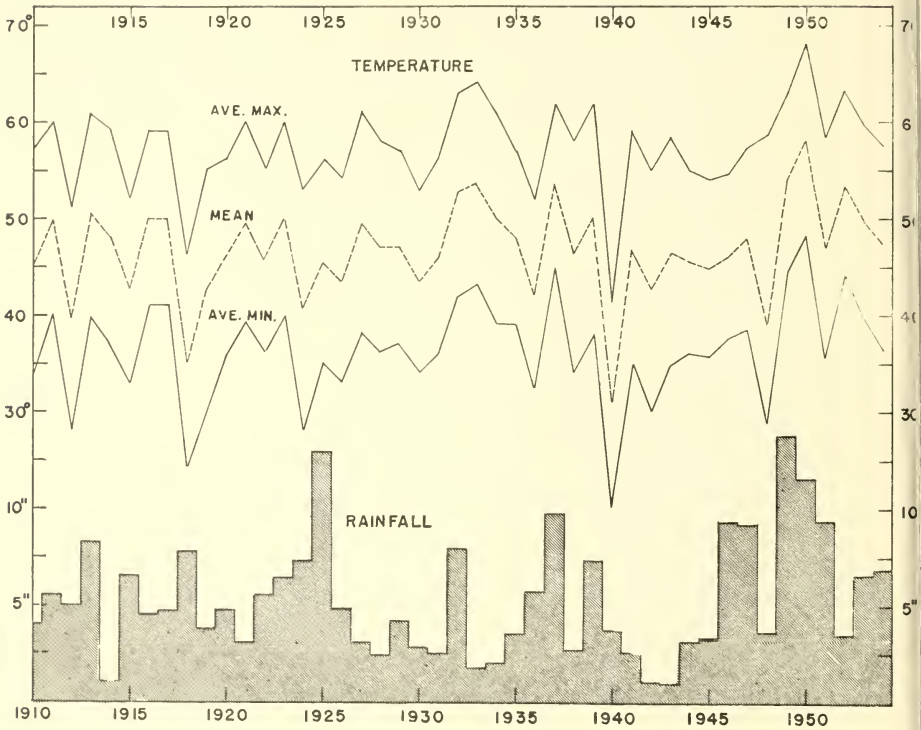
Year	Jan.	Feb.	Mar.	April	May	June	July	Aug.	Sept.	Oct.	Nov.	Dec.	Total
1889	6.17	2.47	4.63	4.18	1.55	6.80	7.72	4.03	1.24	.70	4.18	.77	44.44
1890	3.62	8.03	7.97	5.46	4.35	3.20	3.47	5.83	6.74	3.90	.01	2.47	55.05
1891	7.64	8.50	9.84	3.88	1.78	5.69	8.68	1.30	.70	T*	7.74	5.42	61.17
1892	6.65	1.57	5.49	9.75	2.06	5.07	13.39	5.88	1.94	T	3.65	4.43	59.88
1893	2.06	5.11	2.56	1.87	7.11	1.25	2.28	2.89	8.34	.54	2.99	3.17	40.17
1894	5.01	4.73	6.79	3.13	2.40	2.57	4.88	6.76	1.68	.75	.16	4.11	42.97
1895	8.68	1.75	8.03	2.63	1.81	5.42	2.54	4.71	2.06	2.72	1.71	5.43	47.49
1896	4.15	9.31	4.52	4.21	4.44	4.48	2.60	1.47	1.03	2.61	4.38	1.00	44.20
1897	4.41	4.04	6.76	2.41	1.26	1.93	4.75	3.59	T	2.55	.72	12.72	45.14
1898	7.87	1.73	4.95	4.58	4.17	2.46	4.32	6.66	6.95	2.45	5.00	2.20	53.34
1899	8.37	8.99	8.84	1.50	4.93	1.82	4.56	3.85	.15	1.10	3.91	7.43	55.45
1900	3.10	5.90	6.85	11.90	3.88	14.39	6.22	.83	.63	8.06	1.18	3.15	66.09
1901	6.60	5.63	3.20	4.94	3.87	3.75	.60	8.16	2.35	1.25	4.00	5.32	49.67
1902	4.07	5.68	15.34	3.11	1.48	1.93	3.91	1.17	2.67	2.16	4.79	7.07	53.38
1903	4.64	8.62	4.63	.45	8.33	2.36	4.80	3.35	T	1.26	.15	2.35	40.94
1904	3.23	1.88	5.49	1.40	3.22	1.77	3.02	1.85	1.50	.05	3.70	4.80	31.91
1905	6.13	6.75	6.98	7.58	4.40	6.12	3.95	6.46	1.78	4.50	1.85	4.50	61.00
1906	3.15	2.05	6.75	1.20	4.33	1.45	3.20	1.09	8.87	3.01	3.40	4.33	42.83
1907	2.85	5.91	2.62	5.56	9.06	2.15	2.72	3.21	3.14	1.17	4.63	2.83	45.85
1908	4.32	7.35	4.12	2.61	6.50	4.84	5.04	2.99	T	.27	.68	7.94	46.66
1909	1.54	6.47	12.68	6.49	10.29	7.71	3.25	1.87	2.78	.65	1.40	4.72	59.85
1910	4.07	3.70	.93	3.02	2.62	4.49	8.67	1.42	.85	2.76	1.93	3.00	37.46
1911	5.52	3.75	1.45	10.07	1.92	5.88	6.24	5.10	.20	1.28	4.28	11.83	57.52
1912	5.00	3.11	8.86	12.90	4.68	6.87	6.77	7.47	5.05	5.60	1.00	8.96	76.27
1913	7.74	7.80	6.11	2.53	4.12	1.77	3.98	2.09	7.93	2.71	2.63	3.72	53.13
1914	1.05	4.22	7.19	5.46	2.15	5.06	.85	7.32	7.10	2.00	3.00	6.47	51.87
1915	6.60	4.47	2.81	.73	8.36	9.17	6.31	3.97	6.26	2.23	5.65	4.92	61.48
1916	4.55	2.28	2.85	3.47	7.02	4.02	12.63	2.58	.55	.82	1.96	2.47	45.20
1917	4.74	6.89	7.76	3.52	1.90	2.83	5.49	5.72	2.71	.59	2.41	1.68	46.24
1918	7.73	3.03	1.17	8.13	1.97	4.74	2.95	1.16	3.97	10.76	3.89	2.47	51.97
1919	3.85	5.52	6.23	4.09	5.33	7.15	3.44	7.67	1.48	4.31	8.41	5.14	62.62
1920	4.81	1.80	12.14	10.53	6.31	4.73	2.38	4.78	4.45	.00	2.54	6.74	61.21

WEATHER RECORDS AT STATE COLLEGE

1921	5.63	8.97	7.14	.40	2.47	3.50	2.55	2.99	1.22	1.80	3.49	43.23
1922	6.87	10.66	5.68	3.96	3.01	1.32	3.07	.40	2.21	4.03	6.32	53.06
1923	4.96	6.91	7.18	7.97	5.42	4.02	7.45	1.20	4.49	4.38	6.15	66.61
1924	3.98	6.54	8.17	5.82	.87	1.05	2.68	1.29	.21	.00	4.61	42.53
1925	3.18	5.14	3.18	2.80	1.61	2.46	1.77	2.38	7.52	5.78	3.31	52.03
1926	3.20	4.88	2.80	6.41	9.44	4.83	9.05	.15	1.74	5.64	12.65	65.66
1927	2.56	7.68	1.86	4.66	2.48	5.64	1.47	.83	1.57	6.11	7.91	45.85
1928	3.29	7.32	12.52	5.23	10.53	5.71	2.70	.88	1.66	3.47	1.89	57.61
1929	3.76	10.23	4.58	4.01	3.80	1.85	1.55	5.57	6.07	8.61	3.06	57.31
1930	2.81	6.49	1.26	9.16	.33	.62	4.48	4.27	2.76	4.67	3.57	43.27
1931	2.75	3.95	2.71	2.45	2.54	14.14	2.31	1.21	3.47	4.29	7.23	49.63
1932	6.70	3.88	2.42	3.29	1.97	3.35	2.63	7.07	7.81	3.03	12.01	62.08
1933	3.81	5.61	4.52	2.02	.84	6.21	5.98	2.34	1.53	2.23	1.77	38.58
1934	3.51	7.31	3.20	3.24	3.45	2.49	1.69	3.24	5.04	6.85	3.81	45.84
1935	2.41	8.06	5.26	4.01	2.85	.84	1.15	1.05	3.35	2.82	6.59	41.94
1936	4.46	2.74	2.46	1.54	.84	4.52	3.36	1.59	.78	2.39	4.90	35.25
1937	4.37	3.26	6.84	4.40	2.69	3.37	5.83	2.76	4.40	2.57	2.90	53.13
1938	2.68	3.03	4.32	2.11	3.32	6.63	2.90	.18	.27	3.60	2.53	38.94
1939	9.51	4.23	3.19	5.17	6.29	6.39	1.25	2.98	.21	.92	3.82	51.35
1940	6.57	4.92	3.05	4.52	7.46	16.00	5.52	3.55	1.06	4.16	5.82	66.30
1941	2.53	5.06	1.20	.22	1.31	11.42	4.45	1.40	4.13	4.02	3.84	42.09
1942	1.03	4.73	0.82	2.00	4.27	.83	2.91	1.96	2.46	.60	6.07	31.38
1943	.96	6.32	1.82	2.88	.93	2.39	3.54	4.74	.45	3.11	3.24	33.67
1944	3.15	6.78	9.25	4.28	.58	6.69	4.40	1.44	.04	3.96	6.54	53.98
1945	3.37	8.80	4.50	2.89	1.56	4.57	.70	2.27	4.39	3.17	5.10	47.53
1946	9.25	8.98	1.86	7.32	4.77	6.82	.77	1.38	2.37	6.64	4.17	60.39
1947	9.12	1.81	4.10	1.66	10.03	3.72	4.00	1.30	2.38	6.38	4.56	55.36
1948	3.63	7.94	5.26	1.08	2.21	3.06	4.90	7.05	0.18	11.20	4.52	58.54
1949	13.85	5.84	3.96	6.17	4.96	3.68	3.25	2.89	3.92	.63	4.02	59.01
1950	11.51	7.79	1.95	4.50	2.41	8.51	8.51	6.86	2.01	3.01	2.60	67.37
1951	9.33	4.41	13.52	4.47	5.93	3.15	3.25	3.40	0.99	2.71	8.19	63.43
1952	3.50	3.09	5.45	3.20	0.29	2.06	2.74	1.21	0.26	2.70	4.55	31.32
1953	6.55	7.31	3.65	6.29	2.59	5.26	1.82	.72	.77	0.42	6.63	48.58
1954	6.90	2.34	3.48	3.71	0.81	3.75	1.87	1.23	2.33	4.52	5.74	40.08
Ave.	5.22	4.86	6.22	4.11	3.92	4.80	3.71	2.71	2.38	3.46	4.97	50.84

*T, trace too small to measure.

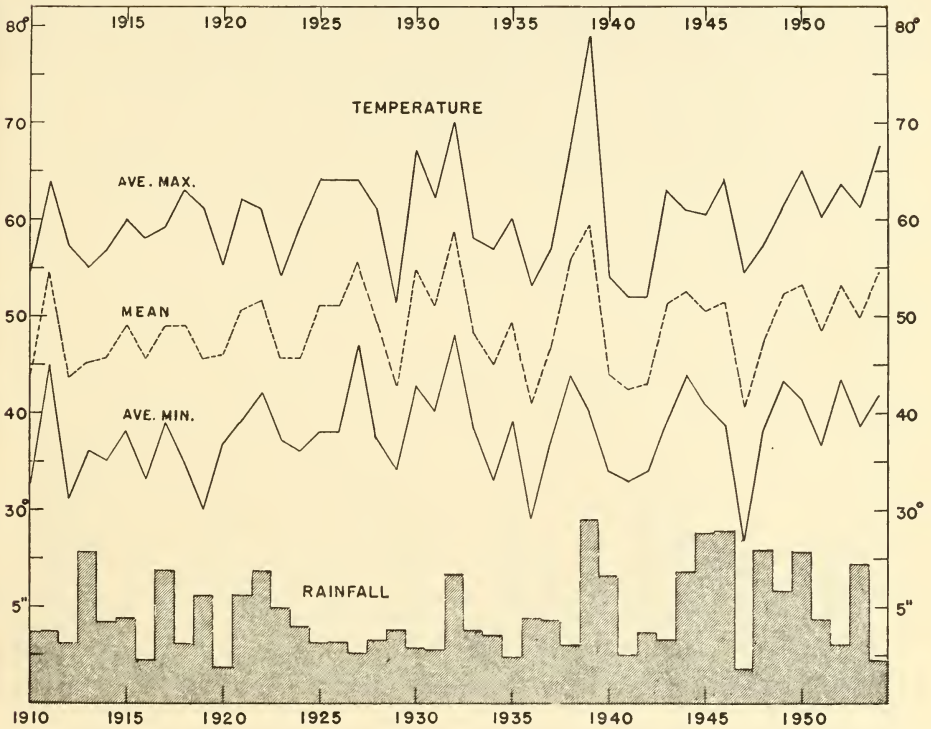
JANUARY



January is the coldest month of the year, although the average temperature is less than one degree below that of December. The graph reveals that 1940 produced the coldest January on record. The mean temperature for the month was 30.5 degrees, 16.2 degrees below the normal mean of 46.7 degrees. The warmest January on record occurred in 1950 with a mean of 58.3 degrees, 11.6 degrees above the normal.

The range of monthly precipitation varied from .96 inches in 1943 to 13.85 inches in 1949. The 66-year average for January is 5.22 inches.

FEBRUARY



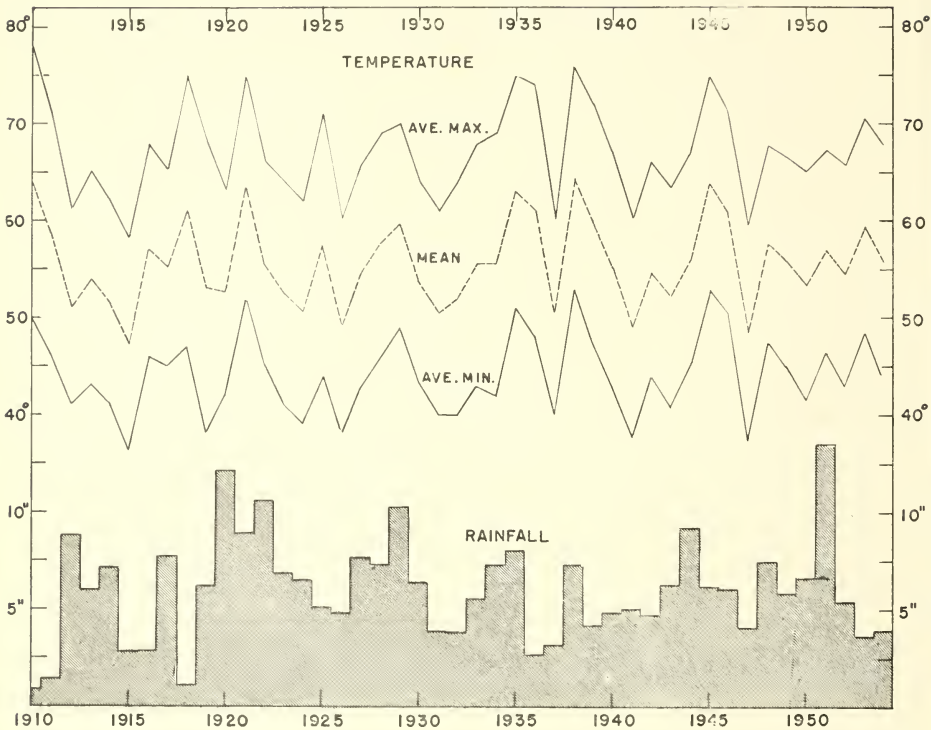
The average temperature of February is about two degrees above that of December. The graph shows that 1947 produced the coldest February on record. The mean temperature for the month was 40.5 degrees, 8.6 degrees below the normal mean of 49.1 degrees. The warmest February occurred in 1939 with a mean of 59.5 degrees, 10.4 degrees above the normal.

The range of monthly precipitation varied from 1.80* inches in 1920 to 9.51 inches in 1939. The 66-year average for February is 4.86 inches.

*1.57 inches in 1892, not shown on graph
1.73 inches in 1898, not shown on graph

1.75 inches in 1895, not shown on graph

MARCH

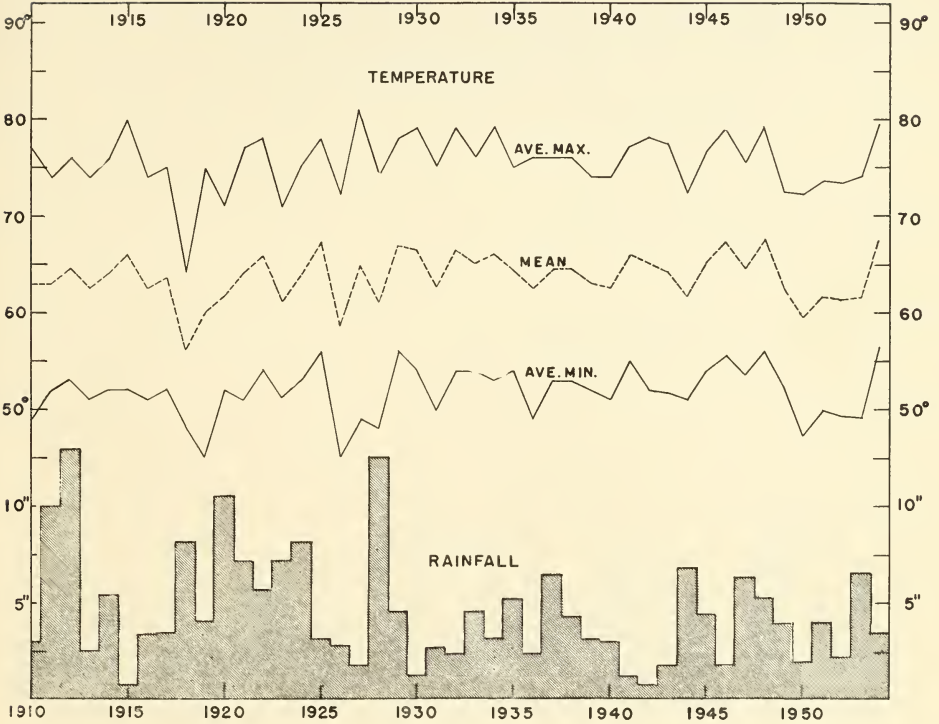


There is a rather pronounced rise in temperatures in March with the average being about 6.5 degrees above that of February. The graph shows that 1915 produced the coldest March temperatures on record. The mean temperature for the month was 47 degrees, 8.6 degrees below the normal mean of 55.6. The warmest March occurred in 1938 with a mean of 64.5 degrees, 8.9 degrees above the normal.

The range of monthly precipitation varied from .93 inches in 1910 to 13.52* inches in 1951. The 66-year average for March is 6.22 inches which is the highest average for any month.

*15.34 inches in 1902, not shown on graph

APRIL

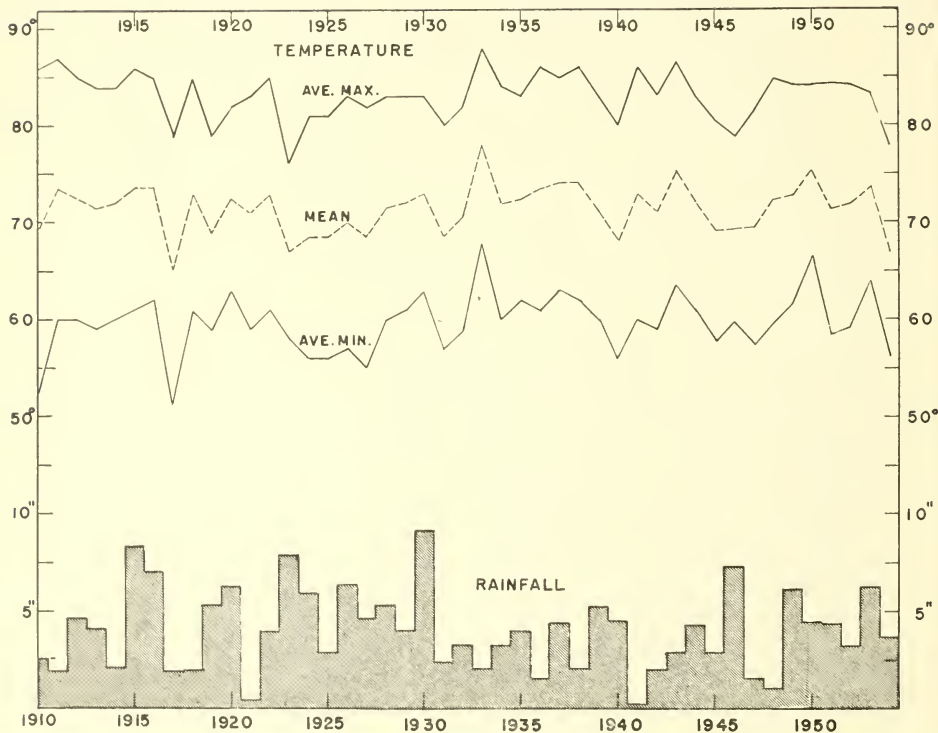


Normally, April brings a very decided increase in temperatures resulting in an average temperature of slightly over 8 degrees above that of March. The graph shows that 1918 produced the coldest April on record. The mean temperatures for the month was 56 degrees, 7.7 degrees below the normal mean of 63.7 degrees. The warmest April occurred in 1954 with a mean of 68.2 degrees, 4.5 degrees above normal.

The range of monthly precipitation varied from .73* inches in 1915 to 12.90 inches in 1912. The 66-year average for April is 4.49 inches.

*.45 inches in 1903, not shown on graph

MAY

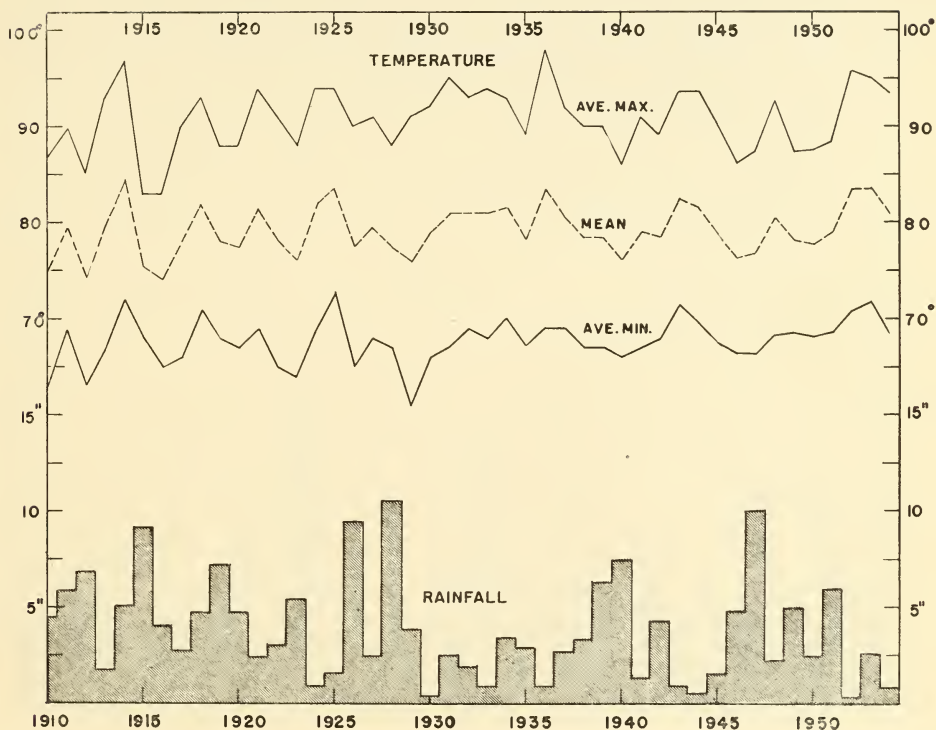


Temperatures continue to rise rather rapidly during May, being about 7.7 degrees above the average of April. The graph reveals that 1917 produced the coldest May on record. The mean temperatures for that month was 65 degrees, 6.4 degrees below the normal mean of 71.4 degrees. The second coldest May on record occurred in 1954 with a mean of 66.9 degrees. The warmest May occurred in 1933 with a mean temperature of 78 degrees, 6.6 degrees above normal.

The range of monthly precipitation varied from .22 inches in 1941 to 9.16* inches in 1930. The 66-year average for May is 4.11 inches.

*10.29 inches in 1909, not shown on graph

JUNE

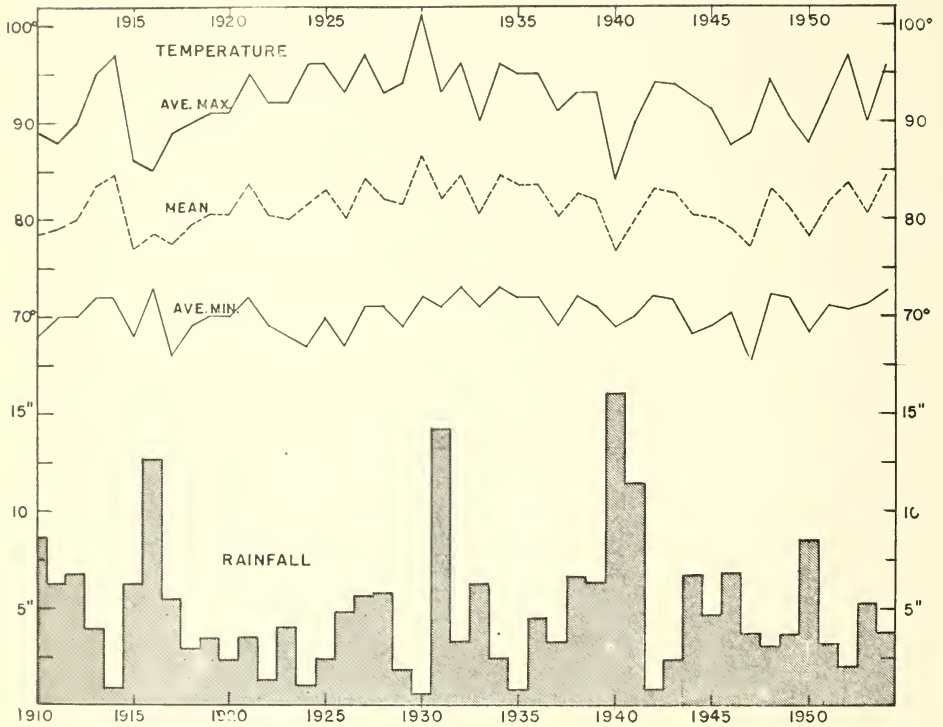


Average June temperature is about 7.8 degrees above that of May. The graph shows 1912 and 1916 to be the years in which the coolest June temperatures on record were recorded. The mean temperature for these months was 74 degrees, 5.2 degrees below the normal mean of 79.2 degrees. The warmest June occurred in 1914 when the mean was 84.5 degrees, 5.3 degrees above normal.

The range of monthly precipitation varied from .29 inches in 1952 to 10.53* inches in 1928. The 66-year average for June is 3.92 inches.

*14.39 inches in 1900, not shown on graph

JULY

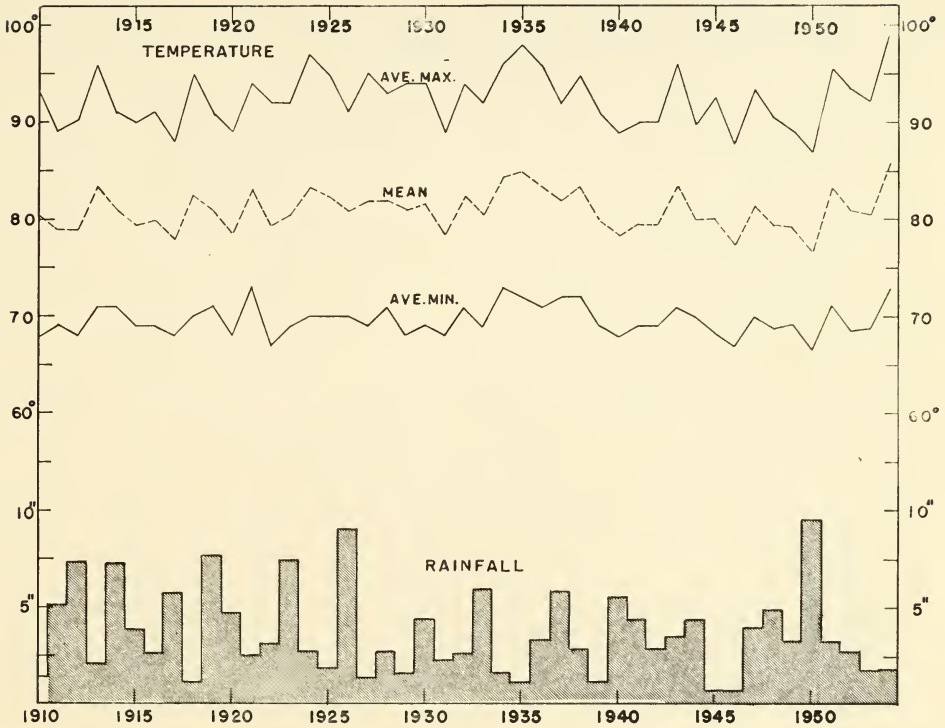


July is the hottest month of the year; however, the average temperature is less than a half degree above that of August and about 2.1 degrees above that of June. The graph for July reveals 1940 to be the year in which the coolest July occurred. The mean temperature for the month was 76.5 degrees, 4.8 degrees below the normal mean of 81.3 degrees. The hottest July occurred in 1930 when the mean was 86.5 degrees, 5.2 degrees above the normal mean.

The monthly precipitation for July varied from .62* inches in 1930 to 16 inches in 1940. The 66-year average is 4.80 inches.

*.60 inches in 1901, not shown on graph

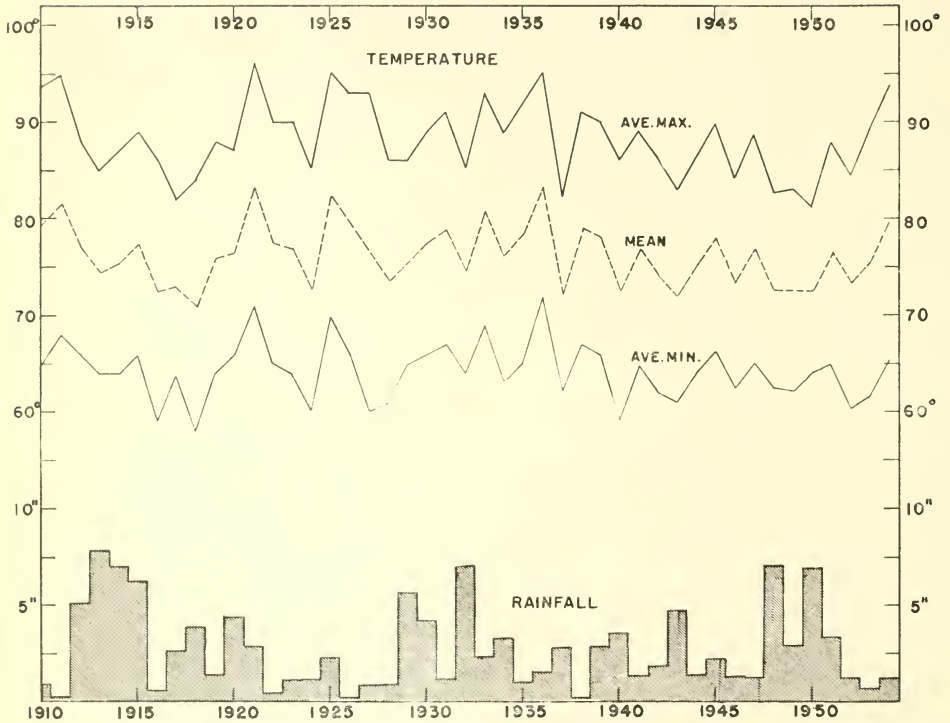
AUGUST



The average August temperature is slightly below that of July. The August graph shows that 1950 produced the coolest August temperatures on record. The mean temperature was 76.8 degrees, 4.2 degrees below the normal mean of 81.0 degrees. The hottest August occurred in 1954 when the mean was 86 degrees, 5 degrees above the normal mean.

The monthly precipitation for August varied from .70 inches in 1945 to 9.53 inches in 1950. The 66-year average is 3.71 inches.

SEPTEMBER



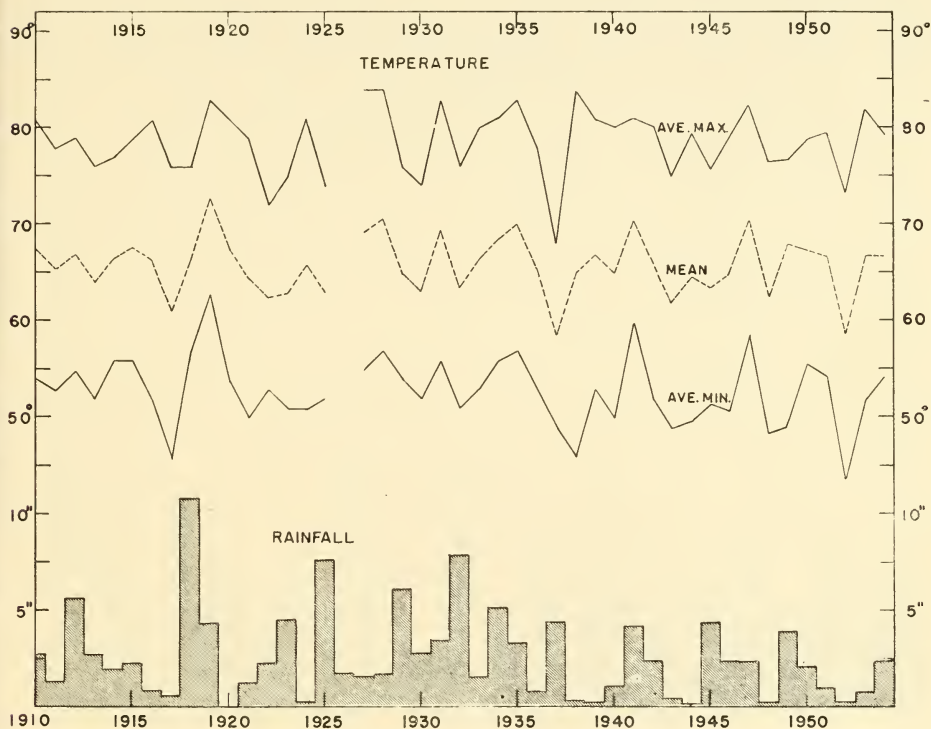
The temperature begins to recede during September. The average temperature is about 4.7 degrees below that of August. The graph reveals that the coldest September on record occurred in 1918 when the mean temperature was 71 degrees, 5.3 degrees below the normal of 76.3 degrees. The hottest September temperatures were produced in 1921 and 1936 when the mean temperature was 83.5 degrees, 7.2 degrees above normal.

The monthly precipitation for September, as shown by the graphs, has varied from .15* inches in 1926 to 7.93**inches in 1913. The 66-year average for September is 2.71 inches.

*Only a trace of precipitation was noted in September 1897, 1903, and 1908; and .15 inches in 1899, not shown on graph.

**8.34 inches in 1893 and 8.87 inches in 1906, not shown on graph.

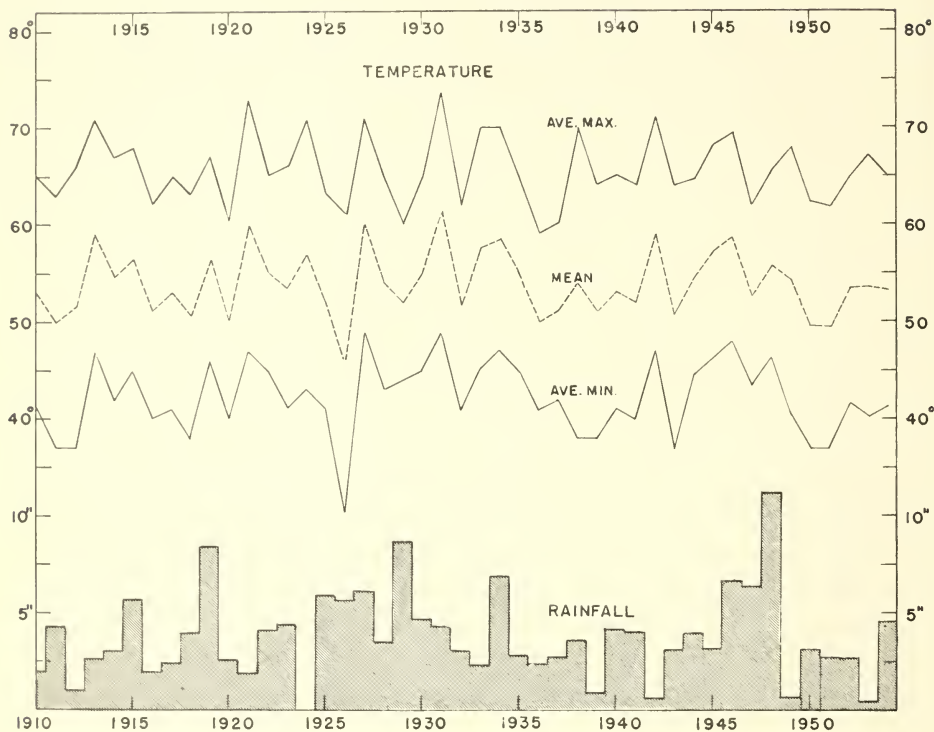
OCTOBER



There is a very decided decline in temperature during October. The average is about 11.9 degrees below that of September. The graph shows 1937 and 1952 to be the years in which coolest October temperatures occurred. The mean for each month was 58.5 degrees, 5.9 degrees below the normal mean of 64.4 degrees. The warmest October on record occurred in 1919 when the mean temperature was 73 degrees, 8.6 degrees above normal. The broken lines indicate that temperature records for October 1926 are not available.

The monthly precipitation varied from zero in 1920 to 10.76 inches in 1918. The 66-year average for October is 2.38 inches which is the lowest average for any month.

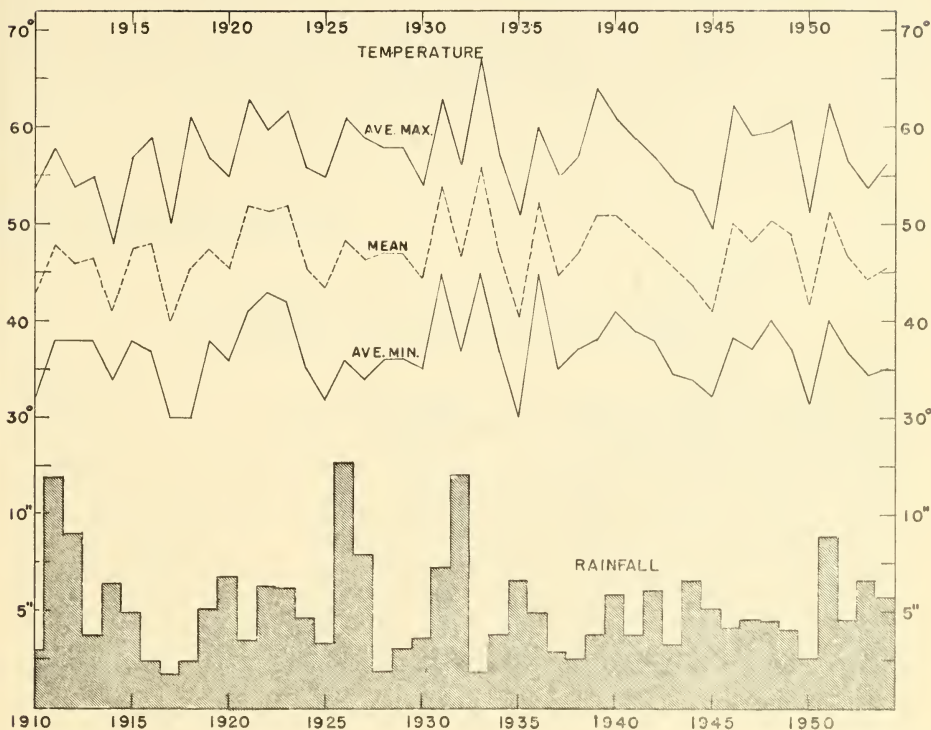
NOVEMBER



The temperature continues to decline rapidly during November with the average being about 10.4 degrees below that of October. The graph reveals that the coldest November on record occurred in 1926 when the mean temperature for the month was 45.5 degrees, 8.5 degrees below the normal of 54 degrees. The warmest November was in 1931 when the mean temperature was 61.5 degrees, 7.5 degrees above normal.

Monthly precipitation varied from zero in 1924 to 11.2 inches in 1948. The 66 year average for November is 3.46 inches.

DECEMBER



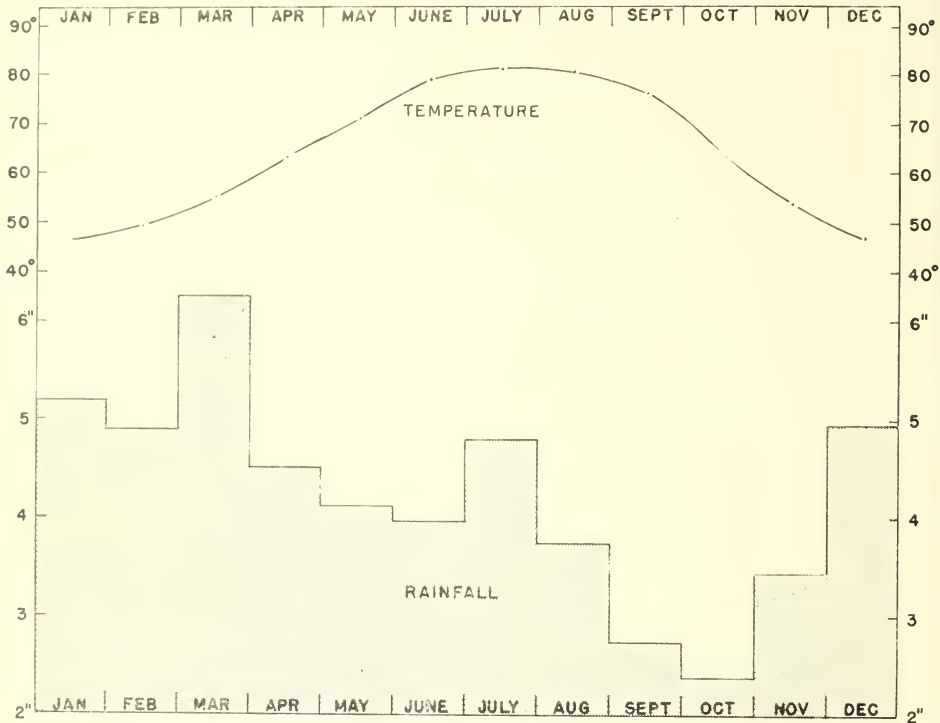
The average December temperature is about 6.8 degrees below that of November and about a half degree above that of January. The graph shows that the year 1917 produced the coldest December temperatures on record. The mean temperature for this month was 40 degrees, 7.2 degrees below the normal of 47.2 degrees. The warmest December temperatures were produced in 1933 when the mean temperature was 56 degrees, 8.8 degrees above normal.

The monthly precipitation varied from 1.68* inches in 1917 to 12.65** inches in 1926. The 66-year average for December is 4.97 inches.

*.77 inches in 1889 and 1.00 inch 1896, not shown on graph

**12.72 inches in 1897, not shown on graph.

SUMMARY FOR AVERAGE MONTHLY TEMPERATURE AND PRECIPITATION



The curve in this graph represents the 45-year average temperature for each month. The vertical graph represents the 66-year average precipitation by months.

Average monthly temperature and precipitation.

Month	Temperature* in degrees			Precipitation** in inches
	Max.	Min.	Mean	
January	57.1	36.2	46.7	5.22
February	60.2	37.9	49.1	4.86
March	67.1	44.1	55.6	6.22
April	75.5	51.8	63.7	4.49
May	83.1	59.7	71.4	4.11
June	90.7	67.7	79.2	3.92
July	92.2	70.3	81.3	4.80
August	92.4	69.6	81.0	3.71
September	88.3	64.3	76.3	2.71
October	76.9	51.9	64.4	2.38
November	65.7	42.2	54.0	3.46
December	57.4	36.9	47.2	4.97
Average	75.5	52.7	64.1	50.84

*45-year average.

**66-year average.