

University of Memphis

University of Memphis Digital Commons

United States

Special Collections Publications

May 2021

Moberly: Fifty Years Ago and To-Day, 1916

Follow this and additional works at: <https://digitalcommons.memphis.edu/speccoll-pub-us>

Recommended Citation

"Moberly: Fifty Years Ago and To-Day, 1916" (2021). *United States*. 34.
<https://digitalcommons.memphis.edu/speccoll-pub-us/34>

This Text is brought to you for free and open access by the Special Collections Publications at University of Memphis Digital Commons. It has been accepted for inclusion in United States by an authorized administrator of University of Memphis Digital Commons. For more information, please contact khggerty@memphis.edu.

MOBERLY

fifty
years
ago-



— and TO-DAY

Issued by
THE BANK OF MOBERLY

\$1.50

A SOUVENIR BOOK

GIVING PARTIAL FACTS OF

MOBERLY FIFTY YEARS AGO

AND TO-DAY



ISSUED BY THE BANK OF MOBERLY MOBERLY, MO.

COMPILED BY JOHN E. LYNCH

DEMOCRAT  MOBERLY



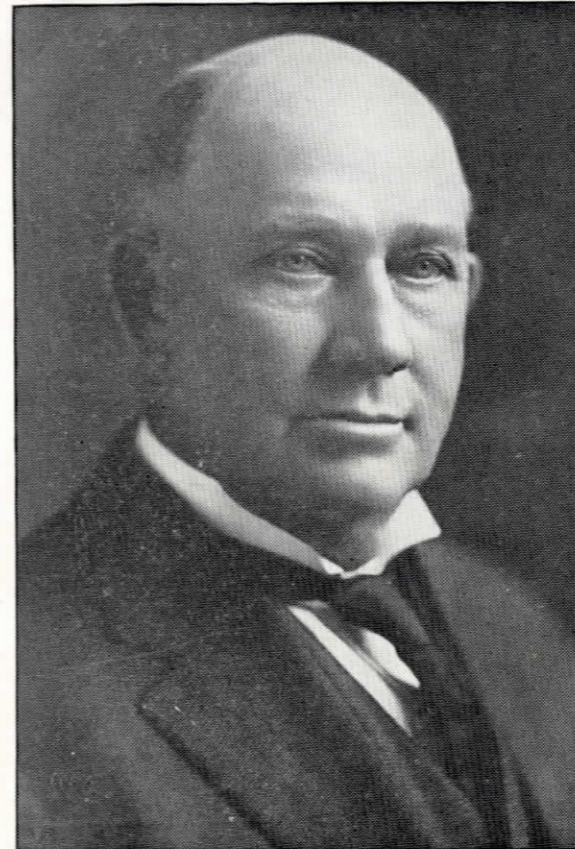
HON. JOHN H. BABCOCK

Who organized the Bank of Moberly, May 11, 1895, with the following stockholders: George Hassett, W. T. Richmond, W. P. Palmer, J. T. Lamb, Gus J. Ginther, W. E. McKinney, G. R. Reynolds, A. B. Thompson, Wm. Firth, W. P. Cave, B. F. Harvey, D. S. Forney, J. H. Babcock, P. J. O'Leary, H. M. Jordan, J. H. Lotter, F. B. Forney. Mr. Babcock was unanimously elected president and held this office until the time of his death June 8, 1909. During his administration the policy of the bank won the public confidence and its business steadily increased. Mr. Babcock was a native of New York and a Civil war veteran. He served in Company 1, 2nd New York mounted rifles. His first coming to Moberly was to the lot sale. In later years he became a leading citizen by virtue of his fine executive ability which was recognized as may be seen from a partial list of the offices of trust he held: Representative to the state legislature, mayor of Moberly, president of the Commercial club, a member of the library board. He occupied a high position in Masonic circles, being at the time of his death senior warden of the Grand Commandery. In disposition and manner he was friendly, genial and gentlemanly. His life was worthy and useful, his memory a legacy to his associates and the city he faithfully served. This personal tribute was recently given by a friend who had known and cared for him: "Mr. Babcock in my intercourse with him impressed me as having for his chief characteristic this admirable trait: In a time of stress or trouble he was always there with kind words and a helping hand, the friend in need and the friend indeed." As such he is yet remembered.



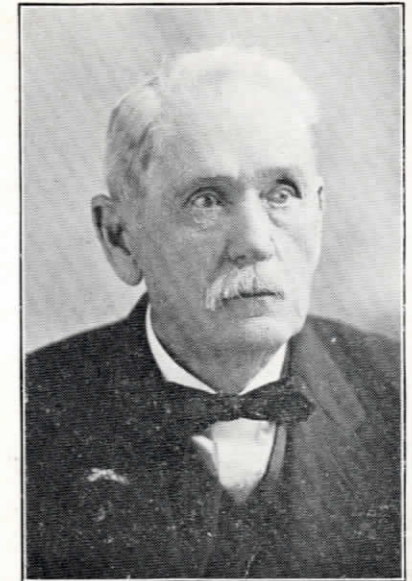
JUDGE A. P. TERRILL

Second president of the Bank of Moberly, was elected to this office July 10, 1909, and served until he was suddenly summoned over into the "silent land" early on the morning of October 22, 1915, at the age of 77 years. Under his management the bank continued to prosper and further establish its reputation as a safe financial institution as was to be expected from such a man as he. Judge Terrill was born in Kentucky and came to this county in early manhood. During the Civil war he was a gallant southern soldier and always remained loyal to the "Lost Cause" but without any bitterness of spirit toward the victors or their descendants. This spirit of fairness and calm was one of his chief characteristics. He was by nature a pacifist, who, whenever possible, threw oil upon the troubled waters of any controversy. By training he was a lawyer and won for himself an enviable place in the legal profession as a counsellor whose services were ever in demand. Being a man of cultivated mind he always lent ready assistance to all educational projects, both in moral and financial support. In church relations he was recognized as a leader, both as a teacher of rare gifts and attainments, and as one whose help could always be relied upon. In business affairs he was trustworthy, in his social connections he was a loyal friend; without exaggeration and with all due reverence to truth, it can be said of him he was a princely giver of all that was within him, and a christian gentleman, whose loss was mourned by the city that had known him only to love him.



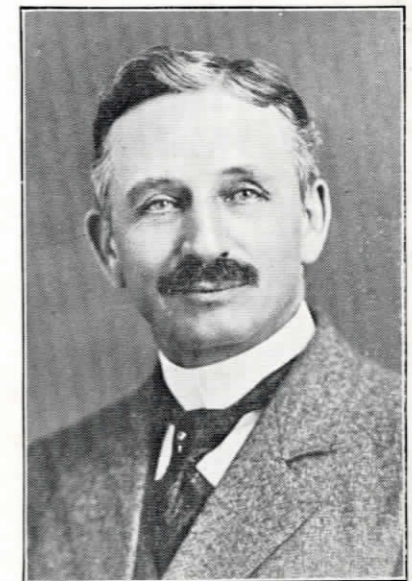
JOHN E. LYNCH, President

The son of Moberly's first citizen, Patrick Lynch, started on his search for the pot of gold at the rainbow's end of success, by driving a team, at one dollar per day; on the excavation work for the railroad shops and lake. His next work was as a blacksmith helper. This he quit to go to firing on the road. In 1880 he felt the call of official life and responded by being elected chief of police. For three years he ran the city fire engine, then again was elected chief of police, serving this time eight years. Now he received a call to come up higher in official life by being appointed United States marshal by President Cleveland. In 1898 he came back into private life as a contractor for sewers and street paving, taking all North Missouri for his field. During this time he represented this county in the state legislature. Being a dyed in the wool Democrat, he counts among his highest honors that of being appointed a delegate to the National Democratic convention held in Baltimore, which nominated Woodrow Wilson. On August 15, 1914, he was again appointed United States marshal and the last recognition of his merit was his election as president of the Bank of Moberly, February, 1916, in which capacity he is now giving eminent satisfaction. Being naturally energetic and aggressive he is putting in his best efforts, and the experience acquired in a long and successful business career, in pushing forward his ambition to make the Bank of Moberly under his administration one of the largest and most substantial banking houses in North Missouri. During the few months he has held the presidency its growth has fully come up to his expectations and is going forward toward the consummation of his sanguine hopes for its future. Being appreciative of the support of friends he gives grateful acknowledgement of their loyal support which makes possible the bank's status in the city and community.



W. T. RICHMOND, Director

The senior member of the directors, has been with the bank since its organization. During his long life he has been farmer, newspaper man, real estate agent and public administrator. Achieving success in each calling so that in the sunset days of life he enjoys the fruits of his labors. He is a man of quiet, unassuming manners, highly respected by every man, woman and child of his acquaintance and beloved by his associates.



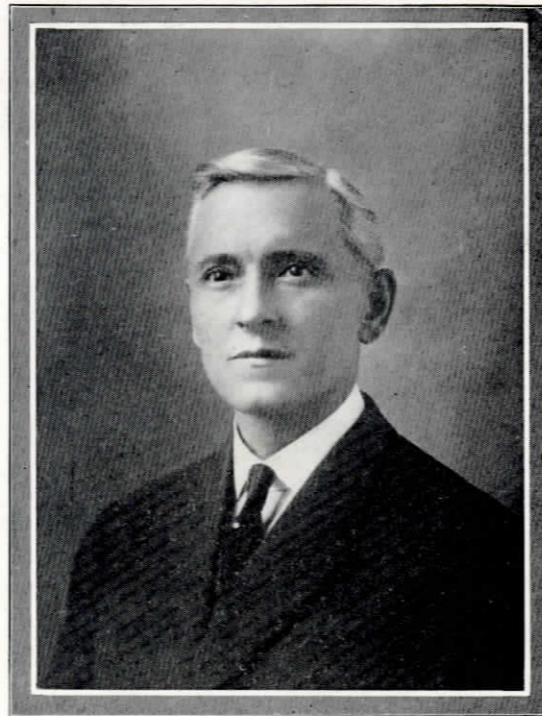
GUS J. GINTHER, Director

Is a hustling business man, now the president of the Globe Mercantile Co. For years he was master painter at the Wabash shops. Besides being a successful business man whose large real estate holdings add a big item to Moberly's financial rating and beauty, he is president of the public library board and a live wire in all public enterprises.



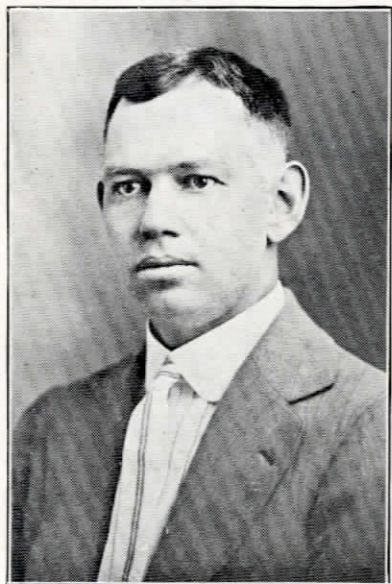
GEO. H. SOURS, Director

For those who may believe there is "no art to find the mind's construction in the face" here is denial in this pictured face, for this open countenance invites confidence and the original has proved his worthiness of trust by close application to business as the vice president of the Forney Clothing Co., and his endorsement of the bank whose policy is, safety first.



Dr. C. B. CLAPP, Director

One of the best known men in his profession in Missouri. Holds the position of chief surgeon for the Wabash hospital and owns the splendidly equipped Woodland hospital. Is a past president of the Commercial club, present president of the school board.



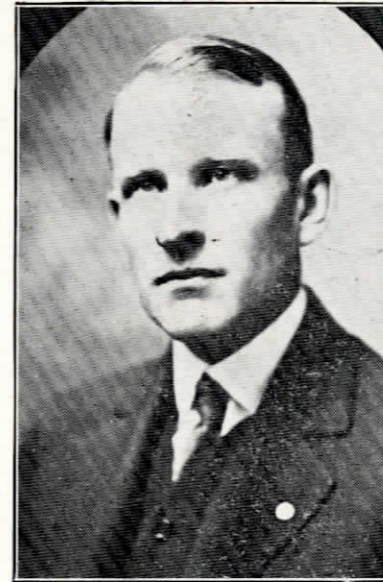
FRANK B. HARVEY, Cashier and Director

Inherited the banker's instinct from his father, Judge B. F. Harvey, deceased, who was an original stockholder. The instinct germ has been developed to a fine degree since connection with the bank by his fine team work with his associates, as well as his interest in the welfare of patrons, making him a valued officer.



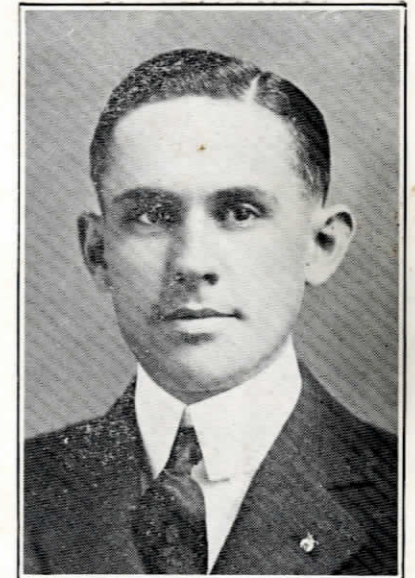
J. H. LAMB, Vice President and Director

Referee and right hand man to President Lynch, is a son of the late J. T. Lamb, an original stockholder. He is a young man with a keen, shrewd business instinct whose banking career began in July, 1902, and at the rate he has started bids fair to write his name in bold type on the roster of leading financiers.



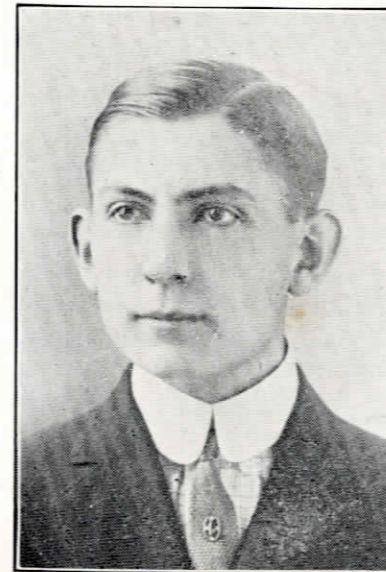
PATTON EDDINGS, Assistant Cashier

A prize product of the Moberly schools—and proud of it. A young man well qualified for the position he holds because of his conservative, substantial traits of character that have won for him general esteem and confidence.



W. E. McCULLY, Assistant Cashier

A native of Clark, Randolph county. A young man fully deserving of high praise because of his sterling worth of character. One of the bank's most efficient employes whose natural abilities and thorough preparation for a larger field, it is predicted, will some day cause his loss to his present employers.



JAMIE BUTTERLY, Head Bookkeeper

Son of Engineer T. A. Butterly. He is a faithful, painstaking member of this corps of workers. The future is his and in this coming time he expects to go a long way in his chosen calling.



MISS EMMA MILLER, Assistant Bookkeeper

Who is the bank's cap-sheaf representing beauty as efficiently as the opposite gender displays its chivalry. Besides being thus easy to look at, she is a capable worker who well earns the contents of her pay envelope.

That Salary of Yours---

Are you still trying to make both ends meet and wishing that your pay was twice as much as it is, or that some good fortune would suddenly appear and help you out of your financial difficulties?

While you are wishing and hoping—time is slipping by and your opportunities and earning power are going with it.

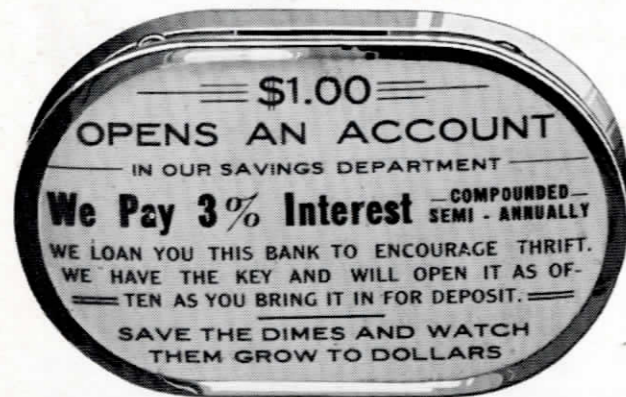
Your Savings Are Safe With Us

Money Deposited Regularly Will Guard Your Future

Deposits of \$1.00 to \$10.00 Weekly at 3 Per Cent Compounded Semi-Annually Accumulate As Shown:

WEEKLY DEPOSIT	1 year	2 years	3 years	4 years	5 years	6 years	7 years	8 years	9 years	10 years
\$1.00	\$52.78	\$107.10	\$163.11	\$220.82	\$280.26	\$341.50	\$404.59	\$469.59	\$536.55	\$605.54
2.00	105.57	214.32	326.36	441.78	560.70	683.21	809.43	939.46	1,073.42	1,211.43
3.00	158.34	321.47	489.52	662.65	841.02	1,024.78	1,214.19	1,409.22	1,610.14	1,817.14
4.00	211.13	428.65	652.74	883.60	1,121.43	1,366.46	1,618.90	1,878.96	2,146.88	2,422.90
5.00	263.90	535.78	815.88	1,104.45	1,401.74	1,708.02	2,023.55	2,348.61	2,683.50	3,028.93
6.00	316.70	642.97	980.13	1,326.45	1,683.24	2,050.81	2,429.49	2,819.62	3,221.54	3,635.61
7.00	369.47	750.11	1,142.25	1,546.24	1,962.44	2,391.58	2,833.33	3,288.44	3,757.31	4,240.35
8.00	422.26	857.28	1,305.46	1,767.18	2,242.86	2,732.91	3,237.77	3,757.90	4,293.75	4,845.80
9.00	475.04	964.44	1,468.63	1,988.06	2,523.18	3,074.48	3,642.45	4,227.58	4,830.39	5,451.43
10.00	527.83	1,071.62	1,631.83	2,208.98	2,803.57	3,416.13	4,047.21	4,697.32	5,367.13	6,057.18

It is not what YOU EARN, it is what YOU SAVE, that counts today. Now is the time to open a Savings Account



Pledge Yourself

that 10 per cent. or 25 per cent. of your salary shall be paid into a Savings Account, and keep the pledge. This little forethought is the difference between success and failure. Success adds years and leisure to your life, to say nothing of manhood and pleasure. All should save now; tomorrow is too late. This bank distributes dime pocket banks; they help you save.

We welcome small accounts, because we want to make you thrifty.

Bank of Moberly

A FEW AXIOMS

If you would worry, be extravagant.

If you want peace and comfort, be a saver.

The regular and systematic saver is never under obligations to anyone when he needs a dollar.

If you would know the value of money, try to borrow some.

The man who refuses to save is robbing himself.

Someone saves part of your money; why not you?

Economy, thrift and systematic saving were never regretted by anyone.

Make Yourself Independent

Save! It is one of the highest virtues.

Spend Less Than You Earn

Make the **BANK OF MOBERLY** Your Bank

OUR STATEMENT



Bank of Moberly, Missouri

CONDENSED OFFICIAL STATEMENT

AT CLOSE OF BUSINESS JUNE 30, 1916

RESOURCES	
Loans and Discounts	\$537,477.56
Overdrafts	2,240.51
Real Estate	350.00
Demand Loans	\$125,091.95
Bonds	24,500.00
Cash and Sight Exchange	174,244.04
	\$863,904.12
LIABILITIES	
Capital Stock	\$100,000.00
Surplus and Undivided Profits	48,607.72
Deposits	615,296.40
Temporary Deposits	100,000.00
	\$863,904.12

The Above Statement is Correct.

JOHN E. LYNCH, President

F. B. HARVEY, Cashier

THIS YEAR IS THE FIFTIETH ANNIVERSARY OF MOBERLY

AND ALSO IS THE ONE HUNDREDTH ANNIVERSARY

of the founding of the first Savings Bank in the United States. The first charter was granted in 1896, on December 13, to a bank in Boston. It was a period in American history when a wise prudence in saving and spending prevailed.

Now, in 1916, the biggest economic need is to save money. Aside from the personal benefits derived from the practice of thrift, the people of America can render no greater service than by conserving a portion of their income. The ever increasing demand for capital to develop our resources must, to a large degree, be supplied through these channels. The growth of the nation depends largely upon the thrift of her people.

You should have a Bank of Moberly Savings Account and become a Weekly Saver.

DON'T BE EXTRAVAGANT.

"Live within your income" is the keynote of the great nation-wide thrift movement, and be not so wasteful. The strength of Rome lay not in the time when Romans were extravagantly spending their millions in feasts and games; when people were flocking from the country to the city; when Romans were too lazy even to play their own games, but hired gladiators not only to play, but to die, for their amusement; it lay not in the time when the young Roman millionaires spent their time at the baths and in feeding on nightingales' tongues and on oysters brought in wet moss from the shores of Britain; when \$175,000 was paid for roses at a feast, and when her citizen soldiery was replaced by hirelings, but in the time when the Roman farmer was its citizen and statesmen and depended not upon the hired others, but upon himself, for performing the duties of the family and the state.

The entire world at the beginning of the present war started to save money. It is a curious fact that such a destructive process as war sometimes is a benefit to a nation. It increases the total efficiency, and it increases the total saving. Let America be not too free to cast criticisms upon our foreign warring sister nations. It may be that the increased thrift and the increased efficiency and the increased strength of character brought about by this great crisis so affecting the nations of Europe, will do for them as they did for us in our civil war—produce characteristics and produce men and women that in the years following the war may off-set the enormous waste and destruction brought about by it.

No amount of wealth will replace character. Wealth will never take the place of personal righteousness, but the characteristics of thrift and economy will do more than anything else to bring back the type of American that made New England, and that makes any nation, strong and great. And by what we save only can we measure our future wealth, whether as individuals or as a nation.

Without me no man has ever achieved success, nor has any nation ever become great.

I have been the bed-rock of every successful career, and the cornerstone of every fortune.

All of the world knows me and most of the world heeds my warning.

The poor may have me as well as the rich.

My power is limitless, my application boundless.

He who possesses me has contentment in the present and surety for the future.

I am of greater value than pearls, rubies and diamonds.

Once you have me, no man can take me away.

I lift my possessor to higher planes of living,

increase his earning power, and bring to realization the hopes of his life.

I make a man well dressed, well housed and well fed.

I insure absolutely against the rainy day.

I drive want and doubt and care away.

I guarantee those who possess me prosperity and success.

I have exalted those of low degree and those of high degree have found me a helpful friend.

To obtain me you need put out no capital, but personal effort, and on all you invest in me I guarantee dividends that last through life and after.

I am as free as air.

I am yours if you will take me.

I am Thrift.

Comparative Statement

OF GROWTH IN DEPOSITS OF THE

Bank of Moberly

May 13, 1895 \$36,309.01

May 13, 1896, \$ 88,556.44

May 13, 1898, \$ 85,333.91

May 13, 1900, \$128,769.65

May 13, 1902, \$167,681.20

May 13, 1904, \$272,012.45

May 13, 1906, \$327,725.11

May 13, 1908, \$328,822.29

May 13, 1910, \$423,231.74

May 13, 1912, \$451,965.35

May 13, 1914, \$490,800.80

May 13, 1916, \$593,882.41

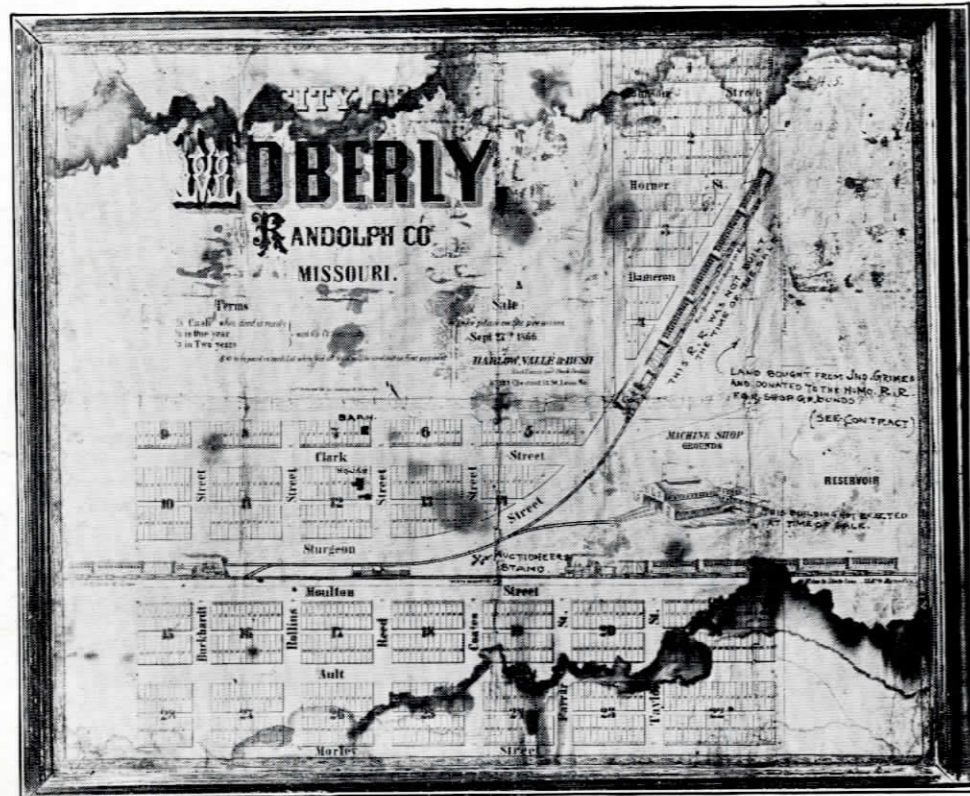
It is with pride that the officers and directors of the Bank of Moberly read the above report and note the remarkably steady progress of the bank.

That its strength, conservative management and service are appreciated by the public is plainly evidenced by its growth.

This bank has every facility to care for all depositors.

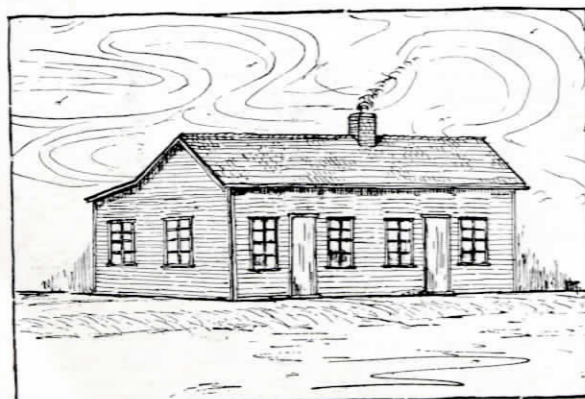
See the Farm and City Loan Department for Real Estate Loans.

Place your valuable papers in our vault before they are burned or stolen. Duplicates are hard to get.

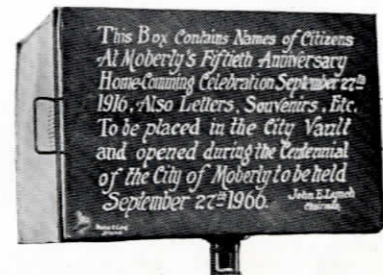


THE ORIGINAL MAP OF MOBERLY

is described as having on it an indication of the location of the machine shop grounds, and having a picture of a house, somewhat resembling a southern cotton gin, combined with a Kentucky rope walk, sketched on its face. The one here shown gives the plat of the town embracing four blocks north of Franklin street, and bounded on the north by the lands of the railroad company; five blocks and five half blocks on the west side of the railroad, from Wightman street on the south to the railroad lands on the north, and from Sturgeon street on the east to the alley between Clark and Williams street on the west and also fourteen blocks on the east side of the railroad, from Sturgeon to Morley street, and from Wightman to the township road, which is now Union avenue. The first house in Moberly was that of Patrick Lynch, located in block 12, as indicated in the plat. His barn was in block 7, about where the Merchants hotel now stands. The auctioneer's stand is indicated about at Coates street crossing. The Grimes land donated to the railroad is also indicated.



THE FIRST HOUSE IN MOBERLY—HOME OF PATRICK LYNCH



This Box Contains Names of Citizens At Moberly's Fiftieth Anniversary Home-Coming Celebration September 27th 1916. Also Letters, Souvenirs, Etc. To be placed in the City Vault and opened during the Centennial of the City of Moberly to be held September 27th 1960. John E. Lynch

AN INTRODUCTION TO MOBERLY.

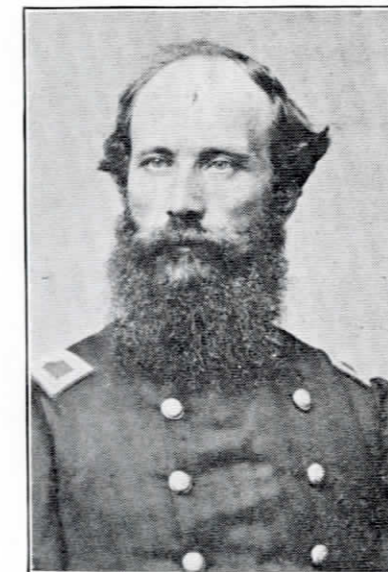
The land on which the principal part of the original town of Moberly was located, was entered by William Roberts on July 19, 1841 and patent for same was issued to Mr. Roberts on April 1, 1843. On July 4, 1860, William Roberts gave to the Chariton & Randolph County Railroad Company his bond binding himself for the consideration of \$15.00 per acre to convey to this railroad company the land owned by him, as shown in the first map of the town, illustrated in this book.

The town was named for Col. Wm. Moberly, who, as president of the Chariton & Randolph County Railroad Company, transferred all interest to the North Missouri Railroad Company, April 28, 1864, and its first lot sale was held September 27th, 1866.

On this, her golden jubilee, in taking a backward look, she can be gratified with a youth well spent. In her earliest infancy she was hand fed by a Board of Trustees, consisting of, A. T. Franklin, President; Chas. Tissue, L. Brandt, Asa Bennett and Wm. Seelen. Other officials were: Marshal, S. L. Austin; Justice of the Peace, E. Sidner; Constable, Chas. Featherston; Notary Public, W. E. Grimes; Postmaster, Chas. Tissue.

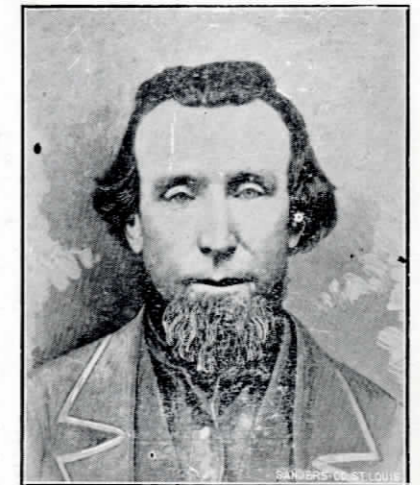
After the village was incorporated under a special charter as a town, in 1873, an election was held, resulting as follows: Mayor, T. P. White; Councilman at Large, C. P. Apgar; First Ward, H. C. Moss; Second Ward, Wm. Seelen; Third Ward, D. E. Fitch and B. R. White. Clerk C. B. Rodes.

Since the regime of these men, she has been carefully nursed by worthy successors, who have nourished her growth by constant additions to her population and acquisitions to her industries. The first big move toward this end was the securing of the old North Missouri Railroad shops, now known as the Wabash shops, which with their terminals cover twenty-five acres. give employment, in the shops, to 1050; in yards, forty-five; in offices, seventy-five; in maintenance of ways department, 130; in running men, 475.



COLONEL WM. E. MOBERLY

The man for whom this city was named. At that time he was a resident of Brunswick and president of the Chariton and Randolph County railroad. This was afterwards the North Missouri, now a part of the Wabash railroad. The picture here shown was taken in 1862 when he was forty years old. Mr. Moberly was of the self made type of a man beginning rustling for himself at the age of twelve. A native of Kentucky, he came to Bloomington, Mo., and laid the foundation of his fortune as a dealer in general merchandise. Although he seemed to have the Midas touch in that everything he handled returned to him in money, instead of being of a grasping disposition he was warm and charitable. Having no children of his own he adopted six children to whom he left his estate at the time of his death in St. Louis in 1883.



PATRICK LYNCH

This is the man at whom the Allenites laughed too soon. In 1861 the Randolph and Chariton Railroad company proposed to build a town on the present site of Moberly. To start this they offered to residents of Allen, one mile north, to give all who would move here as much land as they owned there. Pat alone accepted. Then came the war and a quietus on the project until the lot sale Sept. 27, 1866. Before this started Pat was given a deed to two lots, as Mr. Sturgeon said, because of his having "held the city during the war without the loss of a life or house. He remained a citizen until the time of his demise in 1883.



MRS. PATRICK LYNCH

Whose maiden name was Amanda Stevens. She was a loyal wife and a worthy helpmate deserving of equal praise with other pioneer citizens who did a worthy part in laying deep and well the foundation of this substantial city.



STURGEON STREET OPPOSITE THE DEPOT, 1878

The buildings reading from left to right are: (1) John Grimes' hotel, (2) Dennis Hogan's boarding house, (3) Chas. Waggenman's eating house, (4) Wm. Robinson's saloon, (5) Pete McClarney's saloon, (6) Martin Curry's saloon. (The photograph being stained by age, made this picture partially indistinct.)

Catholic church in 1879, from Wm. Cunningham. The first interment was of the remains of George Heddinghaus, and the last was John Kilholland, a well known mine operator. There are now 871 graves.

Moberly, in 1870, had six street lamps. In 1873 a charter was granted the Moberly Light & Gas Company, which completed its plant in 1875. This was a company of home men, the predecessor of the firm of Fort & Wayland, which later erected the first electric light plant.

From this plant has grown the present Light & Power Company, with its wide awake president, Wm. A. Baehr, of Chicago, and H. M. Saubert, local manager. This plant gives Moberly full satisfaction and has just extended its cables to Huntsville, where it will furnish light and power to that city and the mines of the Northern Central Coal Company.

The men who gave their notes for the purchase of the land to erect the first waterworks and negotiated with the Eastern company to build them, were: H. M. Porter, Frank Wiley, G. F. Rothwell, D. S. Forney, Mike Kelly, Arthur O'Keefe, A. E. Simons and H. T. Fort.

The first sewer was put into service in 1886. There is now in course of construction a sewer in Northeast Moberly, which, when finished, will be the last link covering the city.

The first street paving was from Union Station to Williams Street, and was laid by James Sandison. The city now has some eighteen miles of paving, all done with brick from the Moberly plant, the largest in the west, managed by W. L. Barr. Material is brought from mammoth shale beds adjacent to the city.

Other plants enlarged from early days are: The J. C. Fleming Foundry, which now makes castings for the Wabash Railroad; the Faessler Manufacturing Company, developed from a small shed to buildings covering a floor space of 15,340 square feet; the Moberly Artificial Ice Company, operated by Pat Halloran and L. Kelly; the Stamper Wholesale Poultry Company, with a big city capacity of housing and shipping.

There are other factories and manufactories which cannot be given even passing notice in an article of this length, but mention must be made of the Commercial Club's enterprise in securing the Saffer Corrugated Culvert Company, and the Brown Shoe Factory.

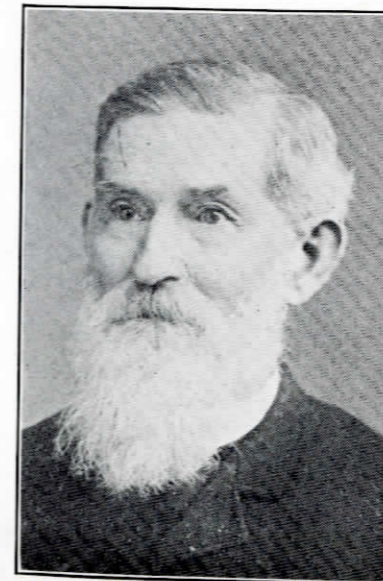
The town's first tax levy was in 1869, at the rate of 50 cents on the hundred. The present levy is \$1.20 on the hundred.

This is merely an introduction to Moberly and invitation is hereby given to all visitors to pursue the acquaintance of the city to learn of its wholesale and retail stores, churches, hospitals, Y. M. C. A., amusement places, clubs, charitable organizations and all other good things gathered unto itself during the fifty years in which it has grown from Patrick Lynch's family of six to a family of 15,000 children, who assure you that living in the "Magic City" is good. Come on in.



BUSINESS SECTION OF MOBERLY IN 1867

The first block on the south side of Reed street, bounded on the west by Clark street and extending to the alley on the east. (1) Built by Patrick Lynch, and occupied by Joe Hutton as a grocery store. (2) Randolph hotel built by Patrick Lynch. This hostelry took care of all visitors who came to the young town at that time. (3) Lynch home moved here from Old Allen. (4) Butcher shop run by Henry Overberg. (5) Built by Wm. Seelen and opened for business May 8, 1867.

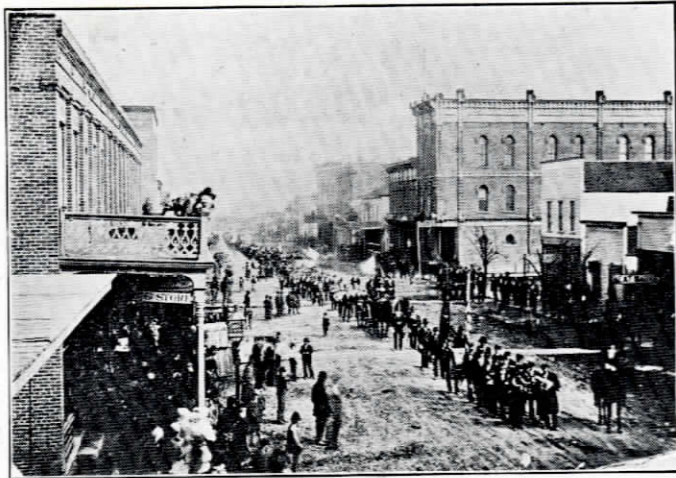


S. P. TATE



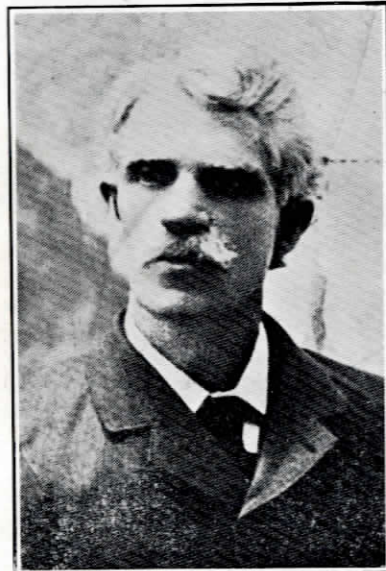
MRS. S. P. TATE

Mr. Tate built and run the first hotel located on the corner of Clark and Reed streets where Merchants hotel now stands, opened the fall of '68, and was a member of the firm of Tate & Bennett, general merchandise. In later years Mr. Tate and wife moved to California where he died; his widow still survives.



**ST. PATRICK'S DAY
PARADE, 1876**

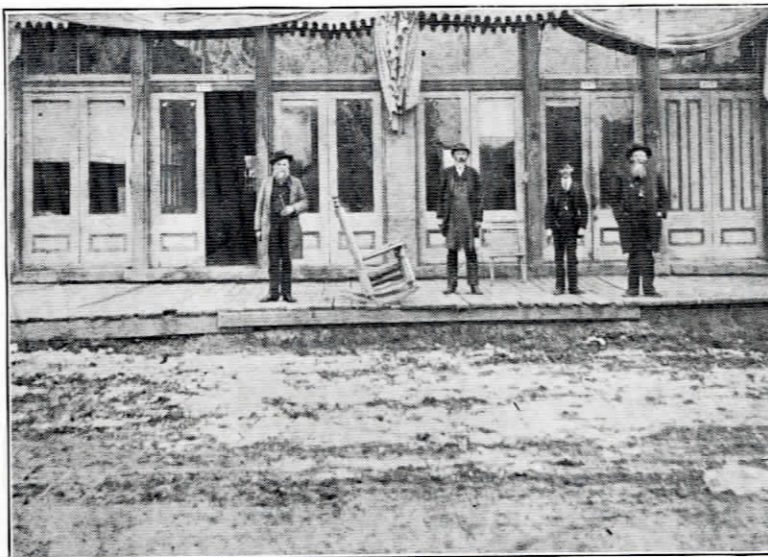
Up to this date, March 17, 1876, the largest parade in Moberly in celebration of this saint's anniversary. The flag bearer was Geo. Shea. The parade was led by the band of which the names of its members are given on this page. The volunteer fire department was also in line and the society of Hibernians are here represented, making in all a fine looking aggregation.



ANDREW KINNEY

An early settler and an original character. If his name does not reveal his nationality this will be made plain by saying he is the man leading the St. Patrick's day parade, March 17, 1876. He was the Grand Marshal. While not a preacher he merded "soles" and made shoes.

TAKEN IN THE EARLY 80's
Furniture and undertaking establishment of Williams Brothers. From left to right: (1) Jared Williams. (2) John T. Mahan. (3) Bell Mahan. (4) John T. Williams. Now Nos. 417-419 West Reed street.



AUSTIN C. CONSIDINE

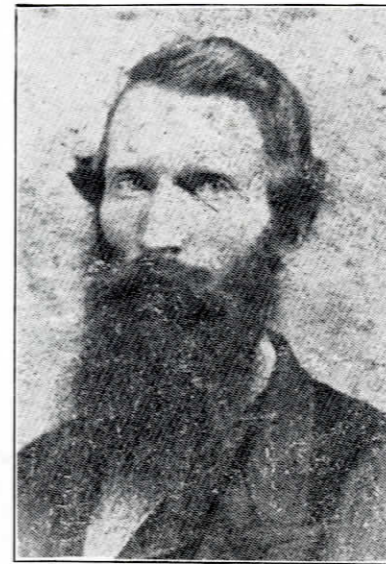
A popular man of a genial disposition who kept a cigar store and run in connection a barber shop in the two-story frame building shown on the right side in this picture, which stood on the corner now occupied by the Bank of Moberly. He was a brother of Mrs. John Keating, of this city.

MOBERLY SILVER CORNET BAND, 1876

Ben Weaver, Harry Humphrey, Wm. Seelen, Thos. Eldridge, Paul Roach, Wm. Terrill, Otto Seelen, Vic Tedford, Prof. Witternolen, Jack Howard, Cicero Tedford.

VOLUNTEER FIRE DEPARTMENT, 1876

Chief, Paul Roach, T. Clark; John Lynch, John McCabe, Ed Buchard, Martin O'Connell, Jack McCaffery, Geo. Shoan, Michael Rodgers, John Hunter, P. McDonald, Jas. Hunt, Frank McCune, Michael Willott, Eli Whittington, Jas. Baxter, Wm. Louis and John Doyle.



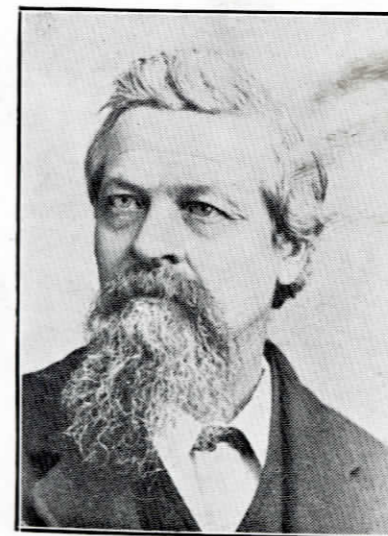
A. T. FRANKLIN

One of Moberly's earliest residents and who was honored by being chosen chairman of the first town board, at the election held June 6, 1868. He was also agent for the North Missouri railroad. He was a cousin of Mrs. George Blythe, of this city.



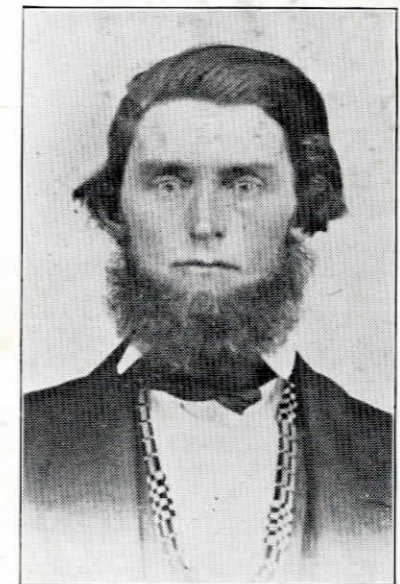
CHARLES TISUE

A pioneer who performed a triplicate of duties. He worked for Uncle Sam as postmaster; he was the Merchant's Union Express agent and worked for Moberly's good as a member of the town board. He was the father of R. K. Tisue, of West Coates street.



WM. SEELEN

A member of the first board and later a member of the first council from the second ward. As a business man, he opened, in 1867, a hardware and cutlery store, and continued in commercial life until the time of his death in 1902. He was a liberal contributor to the upbuilding of Moberly, giving largely to every church, and all public enterprises.



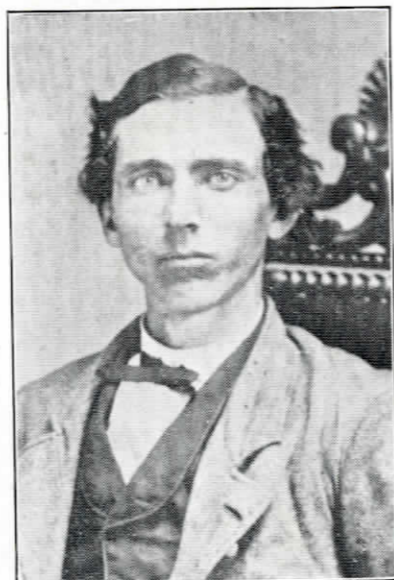
ASA BENNETT

Who served on the first board, thereby helping to make legislative history for the village of Moberly and along with this he clothed its citizenry as he was proprietor of the first dry goods store. He was the father of Joe Bennett, former county recorder, who, next to John E. Lynch is Moberly's oldest citizen in point of residence.



S. L. AUSTIN

Here is our first marshal, who is now a resident of Warsaw, N. Y. During his tenure of office Moberly was only a corporate village and, according to his testimony, his first arrest was of a man who was breathing out threatenings of slaughter against another man, all on a Sunday, too. He was reduced to a Sabbath quiet before he had done any bodily harm.



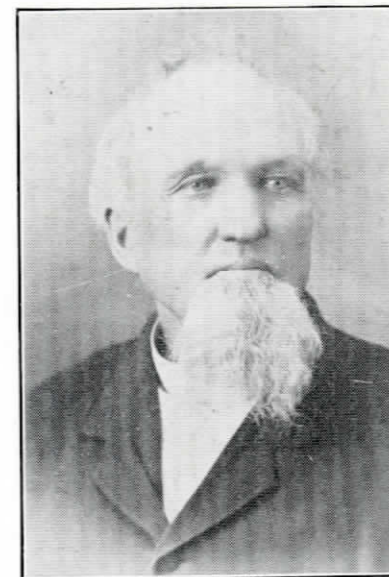
W. E. GRIMES

This gentleman was the first one to be trusted with the care of the little town's finances under the official title of treasurer. Either as a side line or main issue, he printed the "Moberly Herald." This was devoted chiefly to real estate interests.



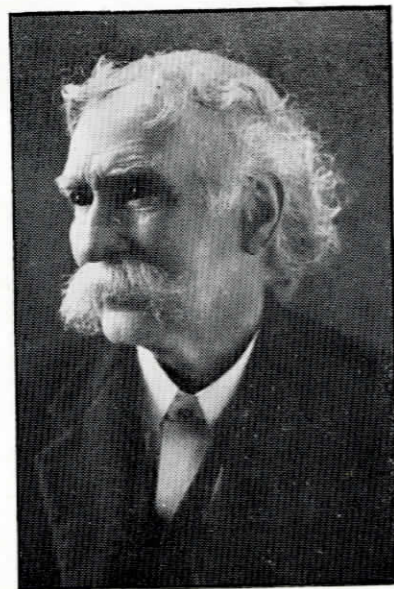
JAS. M. WILLIAMS

A substantial citizen who came to this county in 1858, and ate his tenth birthday dinner in a house where the Dr. Tedford home now stands on West Coates street. As a youth of eighteen he attended the first lot sale. Later, as a brickmason he helped build the first brick building. For twelve years he served as councilman. For four years he was county judge. He is still engaged in the coal business and just now is busy trying out new motor trucks for long hauls.



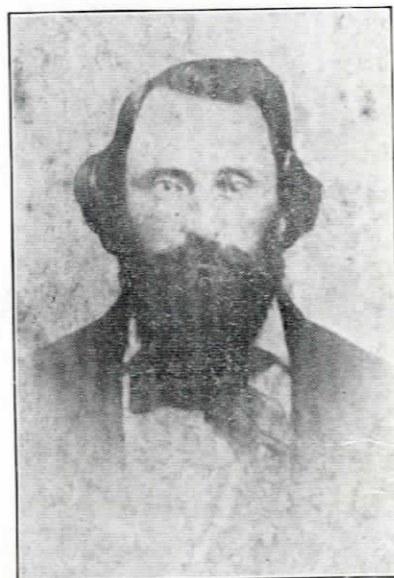
HENRY T. FORT

A citizen of former days with a record of enterprise and initiative. In 1882 he and his business associate, H. H. Wayland, erected a plant for the manufacture of hay stackers and rakes; in a short time a broom factory was added. Two years later the same firm opened a foundry for iron work which at that time was the only one of its kind outside the cities. At a later date this firm installed and operated the first electric light plant in Moberly. Mr. Fort was the father of Mrs. Frank Rothwell, of Gilman Heights, this city.



J. W. DORSER

An early and long time resident of Moberly. In her infant days he nursed her through all legal troubles, in the capacity of counsellor, and continued her friend through all his days.



WM. WILLIAMS

In the face here pictured is shown the man who made straight the path for the coming of the tax gatherer to early Moberly, for he was the first assessor.



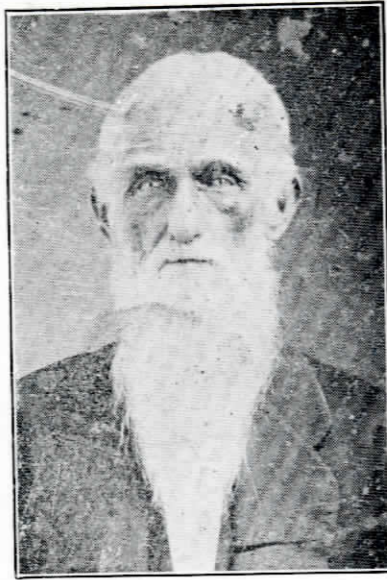
JAMES A. TAGART

An old railroad man who can tell among the many interesting things, in his running experience, that he was the man who shoveled the coal that fired the engine that brought in the first carload of lumber for Moberly. He was a member of the council in 1885-6. He is now spending his days in ease on a well-earned competence and his honors as a Confederate veteran.



SAMUEL HEDGES

A man so long and closely identified with the growth of Moberly that he is as familiar as a landmark. He is a veteran groceryman who has now retired from business and is now living at ease on the capital acquired in younger days.



CHARLES FEATHERSTON

Came here in 1868 and remained until his death in '83. He was the town's first constable and took a prominent part in the making of its early history. A man of good business judgment he made profitable returns on real estate investments. Honesty and a good principle were his and he is held in honored remembrance by his descendants, three of whom live here: Mrs. Lela Thomas, Singleton Steele and J. S. Hedges, Jr.



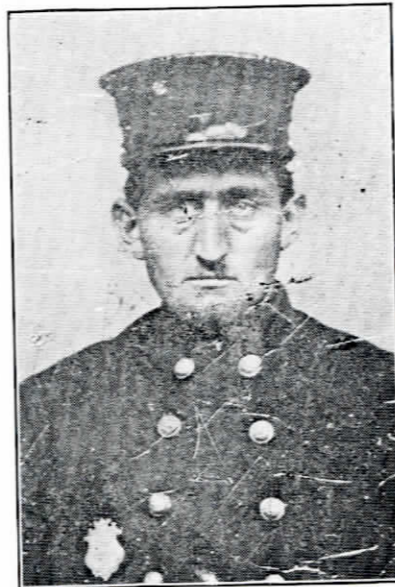
BEN LEVY

Came to Moberly in 1870 and opened a clothing store in a frame building where R. A. Curran's store now stands. He was a decided acquisition to the young town for he was an aggressive business man who got behind all enterprises as a booster and gave liberally of time and means. Among other things he gave Moberly its first show house, through the influence of his wife. This was known as Harmony hall. Most of the seats were backless benches. The first curtain was home made of muslin. The Levy home was the first one to put in gas lights and for that reason became a place of wonder.



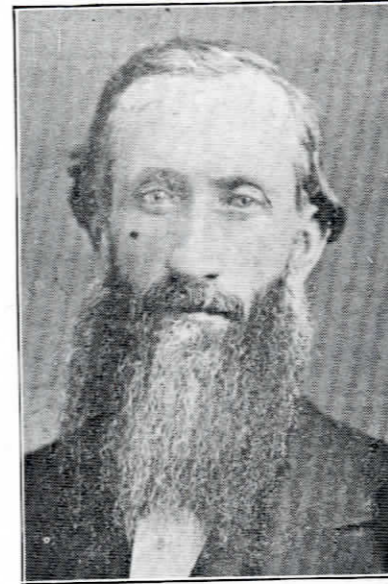
P. H. NISE

A pioneer citizen of Moberly and a long time hardware merchant and implement dealer. Took an active part in securing the shops. Of an affable disposition, he made friends of his customers and built up a prosperous trade. A life long and ardent Democrat, but has been "interned" for the past few years in republican Kansas.



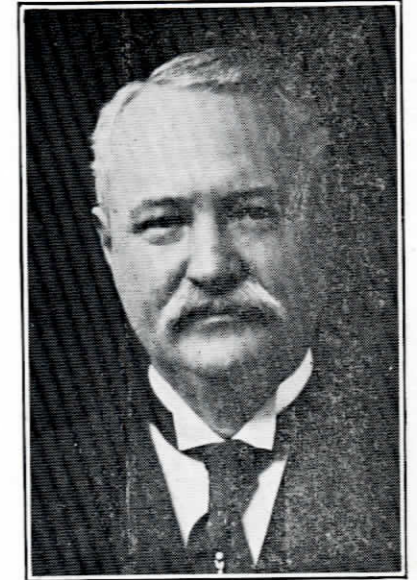
JAMES RAGSDALE

Known by both the young and old, as he came early and is still among us counting on future years of life in this one of the healthiest cities on the map. Mr. Ragsdale is an experienced business man and was marshal for two terms. Also he served the city as mayor from 1891-3.



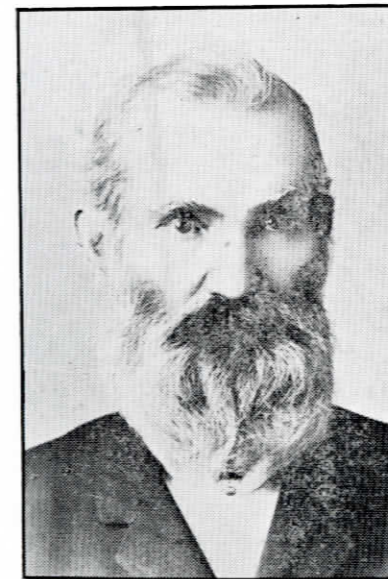
REV. J. A. BERRY

Who vies with Rev. Terrill as to precedence in preaching to young Moberly, was the first pastor of the Christian church, situated at the corner of Morley and Coates streets. At different periods he ministered to this congregation and was serving a pastorate when after a long life devoted to the Master's vineyard he was summoned to come up higher.



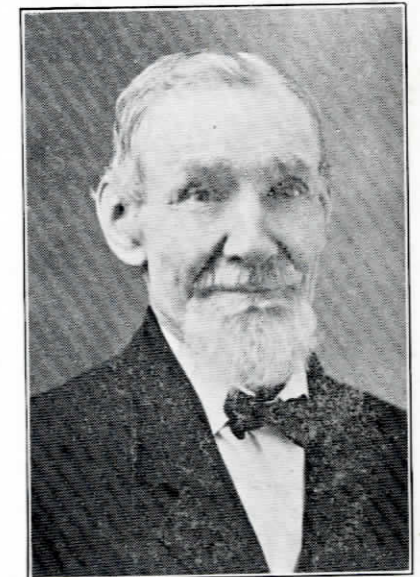
JUDGE H. S. PRIEST

As a young law graduate seeking a place to try out his maiden efforts as a jurist, came to Moberly in 1873. He made good. Was city attorney and attorney for the Wabash. In 1883 he moved to St. Louis and since that time has been attorney for railroad corporations, director of a trust company, and a United States district judge. The latter office he resigned in 1896 to form the law partnership of Boyle & Priest, of which he is now the only member and is recognized as a leading legal authority in Missouri.



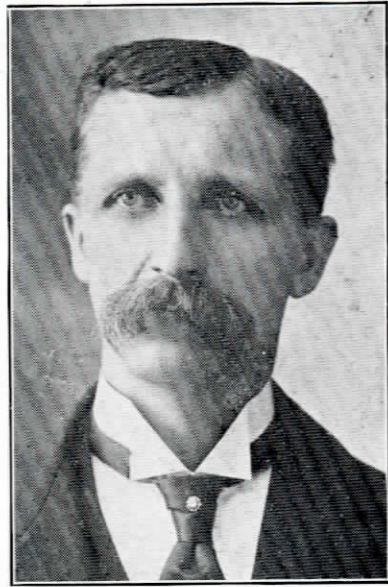
DR. J. C. TEDFORD

The first physician, a doctor of the old school, who answered calls day and night, with or without pay. His home originally stood where the Fennel building is now located. Later the front part was moved to 732 West Coates street where it now stands and is occupied by his family.



J. G. ZAHN

A man who showed faith in Moberly in the beginning by being present at the lot sale and investing in her real estate. A man of quiet ways who became manager of the first lumber company.



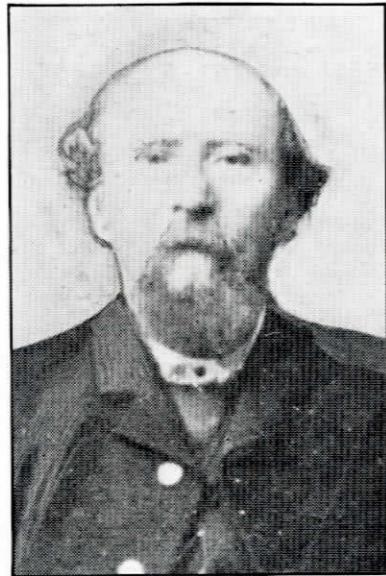
VALENTINE RIEGEL

A native of France, the land that helped America achieve independence. He came to Moberly a young man of eighteen in year 1871. He opened the first fruit store and in connection carried notions. Later he dropped the fruit and added dry goods. For the past twenty-five years he has been one of the well known real estate agents of this city.



MRS. J. N. KRING

This comely old lady preserved the good looks of her youthful days when she was Sallie Pearl. She was twice married and twice widowed. Her first husband was "Cap" Williams. After his death she taught the first village school which was a private school held in a cottage. Her second husband was John N. Kring, an early jeweler. She was a charitable, christian woman whose death occurred on her eightieth birthday.



HENRY OVERBERG

This name appears in the earliest business directory and continued there for a long period of years during which its owner furnished meats to the growing city at prices that have passed out of use in these times of the high cost of living.



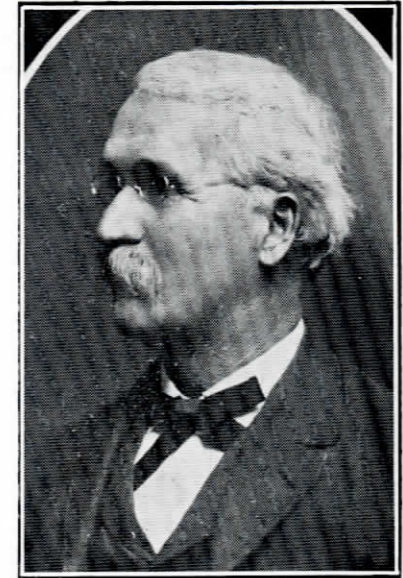
J. A. HUTTON

He fed the hungry, being proprietor for a number of years of a staple and fancy grocery store. He was one of the first grocerymen in Moberly and was always very active in the upbuilding of the city.



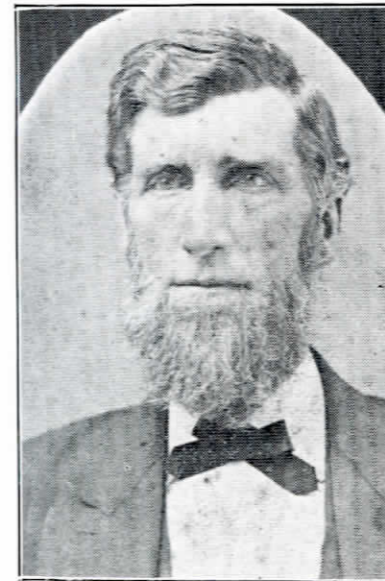
DR. C. ADAMS

Who was a member of the firm of Chandler & Adams in 1867, the first druggists in Moberly. Besides being a leading druggist for many years he was a citizen of progressive activities and was a councilman in 1889. He yet remains a citizen satisfied to live and die in this, his home town.



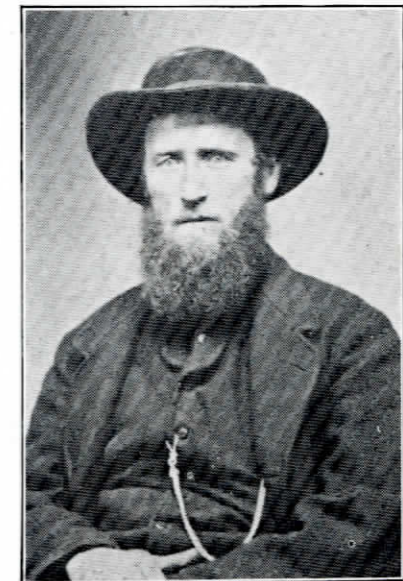
DR. W. K. CHRISTIAN

Moberly's pioneer dentist, came to the little town just a year after its beginning. From that time until his death, January 5, 1910, he was a resident. At the time of his death he was the oldest practicing dentist in the state. He was a man of strong religious convictions. His daughter, Mrs. John H. Woody, resides on West Fisk avenue.



B. Y. N. CLARKSON

A participant in the early days' business affairs who turned his attention to the needs of the agricultural community by keeping on hands an adequate supply of reapers and mowers. He served the town in various ways, anon these, he was a member of the committee that drafted the special charter under which the town of Moberly was incorporated. His daughter, Miss Ella Clarkson, still lives here.



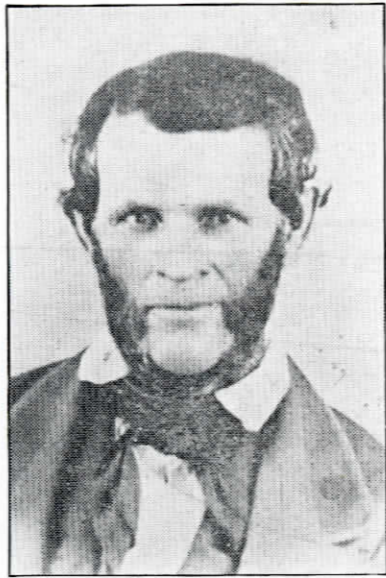
JOSEPH M. GINGRICH

Came to Moberly April 8, 1868, was made foreman of the first car repair shops. The shops stood where the Y. M. C. A. now stands. He also brought the first musical instrument—a melodian which is now in possession of his daughter, Mrs. John Neth, of Bond street. This instrument is fifty-four years old. Mr. Gingrich died June 15 of the present year.



DR. H. C. MOSS

First councilman from the first ward. A loyal citizen who presented to the city the plot of ground on which the East Park school building now stands. It was given for a public park and its present use not only fails in its purpose but seems as well to indicate that cities, as well as republics, are sometimes ungrateful, in that it does not bear its donor's name.



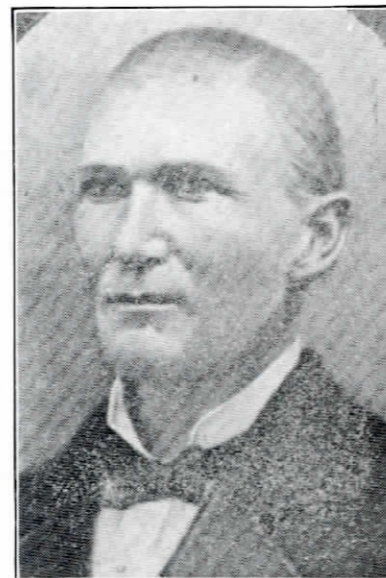
FRANCIS M. McCORD

A man whose personal history was long connected with Moberly. He aided travel and business as a liveryman and also assisted Cupid by the same means. After disposing of this business he engaged in stock buying and in shipping mules to southern markets. His grandson, J. F. Curry, is the present city clerk. His daughters, Mesdames Jno. Gansner and B. W. Holliday, live here and Mrs. C. P. Beatty lives in St. Louis.



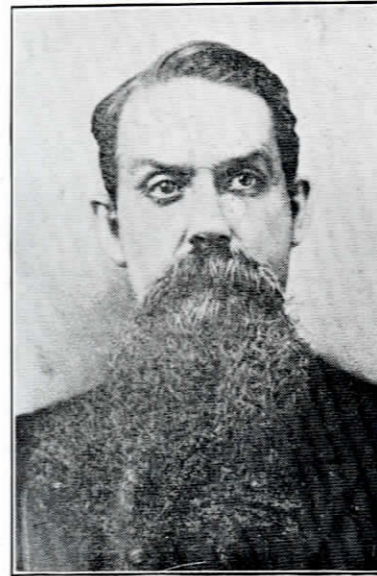
MRS. DENNIS KELLY

"What is home without a mother" or a town without its women? This worthy woman came to Moberly in an early day, a widow with three small sons. Thomas, Dennis and Leon W. are their names. Out of their meager finances this family working together carved out a big slice of good things for themselves and the city. Today the mother, like Cornelia of old, counts her boys as her jewels.



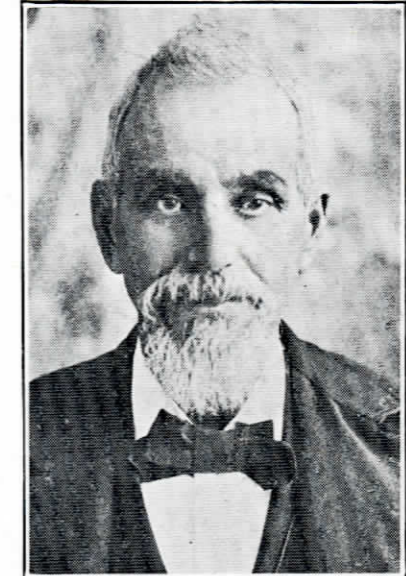
DR. C. J. TANNEHILL

A member of the first board of health and a citizen who was active in all interests pertaining to the town's welfare. On March 21, 1872, this big hearted man donated to the city a beautiful plot of ground to be used either as courthouse square or a park, as the city deemed necessary. The ground still perpetuates his memory by being known to young and old as Tannehill park.



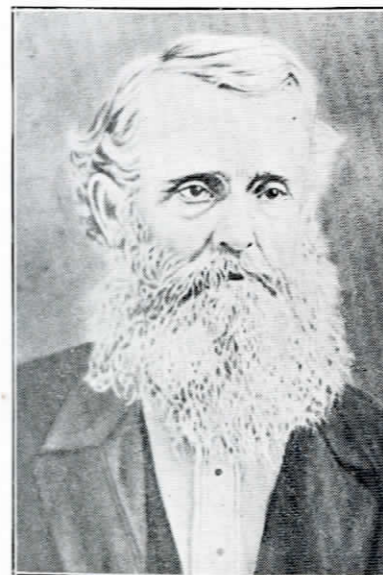
DR. JOHN C. HICKERSON

Born in the Old Dominion was brought to Missouri by his parents, in early life. Graduated with distinction from the St. Louis Medical college in 1860, practiced in Ralls county for ten years and came to Moberly in the spring of 1870. Here he built up a lucrative practice and was highly regarded as a man and friend. He served two terms as mayor of the city when this official was elected every year. Honored and respected he passed to his reward April 6, 1885, and his professional mantle is now worn by his son, Dr. E. R. Hickerson.



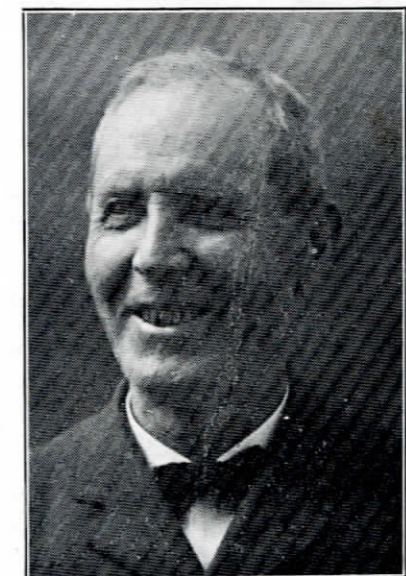
JOHN SOURS

A native of New York who came west in 1852. He was superintendent of bridges and buildings on the North Missouri railroad under Isaac Sturgeon, its president. Supervised building of its western division, from Moberly to Kansas City. Also helped to build all the depots on the Des Moines extension. He saw the Moberly shops rise under his direction and labor and for forty years was foreman of the bridge and building department of the Wabash. He attended Moberly's first lot sale; married Miss Catherine McCabe and reared a family of six sons and one daughter.



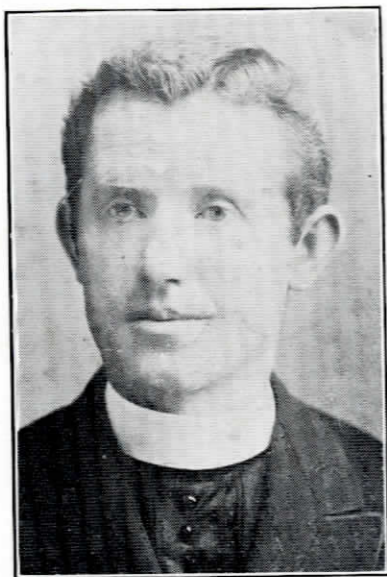
REV. BENJ. TERRILL

A preacher of the Baptist faith, who, according to some of the older residents, preached the first sermon in Moberly in the dining room of the Tate hotel. After the organization of the Baptist church he was its first pastor.



PERRY MCDANIEL

This is the pleasant countenance of the town's pioneer clothing merchant. He who runs may read that this photograph was taken when business was at its high tide and the merchant getting his share of the "shekles."



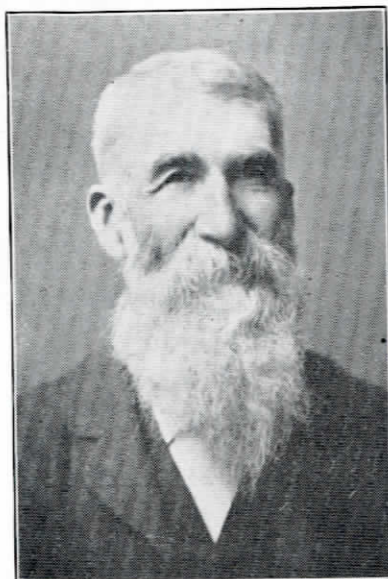
FATHER O'DONAHUE

Who came here in 1887 as assistant to Father Francis McKenna. No picture of Father McKenna could be located so his assistant's likeness is used to introduce a paragraph in remembrance of Father McKenna, who built the first Catholic church here in 1870, on the corner of Ault and Farror streets. He was dearly beloved by his parishioners and highly respected by Protestants, because of his friendliness and his charitable spirit. When the Recording Angel closed his earthly record in April, 1889, every business house in the city closed its doors during the hour of the funeral services



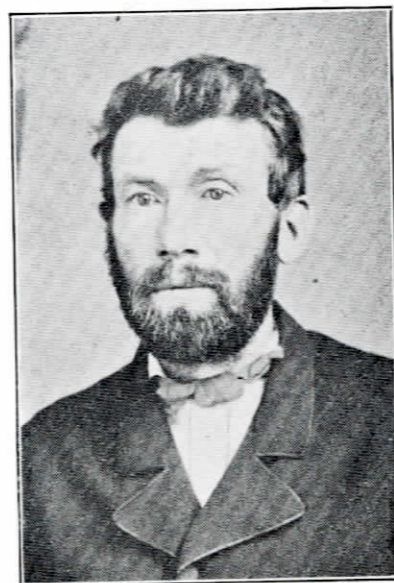
J. H. LOTTER

Who defied the superstition concerning the unlucky thirteen by coming to Moberly on that date in February, 1869. He first engaged in the hoop pole business. Then worked for the old North Missouri railroad in various capacities. Quitting this work he opened a saloon, restaurant and knitting factory, also began buying and selling real estate. In connection with the latter he cherishes his first tax receipt on a house and lot, which shows city taxes \$1.25, state and county \$.68. Today he enjoys a comfortable, self-made fortune on which he lives at ease.



J. WARREN HAYNES

An old time and present citizen. He was a "city dad" in 1871 and also is well remembered as the man who did the first grading for the streets of Moberly. A man of earnest, substantial traits of character.



PETER FOX

Came to Moberly in 1868. Known to local fame as the boss blacksmith at the repair shops maintained by the North Missouri railroad before the removal of the main shops from St. Charles. A member of the town board in 1872 and a live wire in the village.

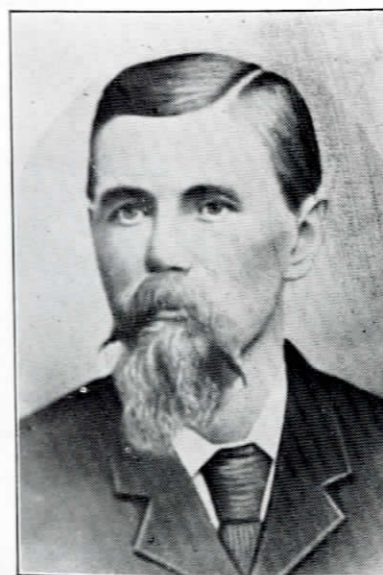


E. G. DESKIN

E. G. Deskin and wife, nee Mary Ann McKinsey. This couple of good looking and well preserved citizens, will wear their "blushing honors thick upon them" during Home Coming week for theirs is the unique distinction of having been married on the day of the first lot sale. Their golden wedding and the city's jubilee will be fittingly and jointly celebrated. Mr. Deskin was one of the first letter carriers and continued as such for twenty-three years. He and his wife live in a home built on a part of the farm of her father Captain McKinsey.



MRS. E. G. DESKIN



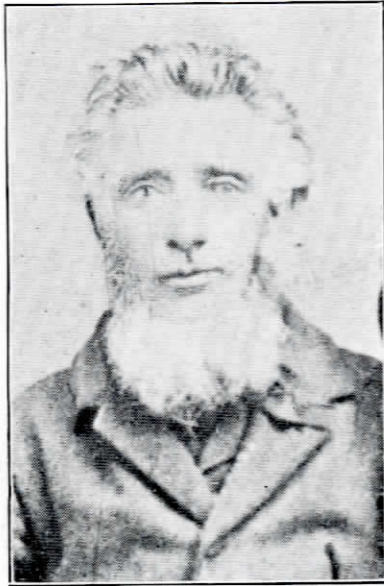
E. H. MILLER

Head of the firm of Miller & Bro., ran the first bakery and in connection also carried a stock of groceries. Three of his children are present residents: Mesdames Asher Whitten, Syl Klink and Miss Isabelle Miller.



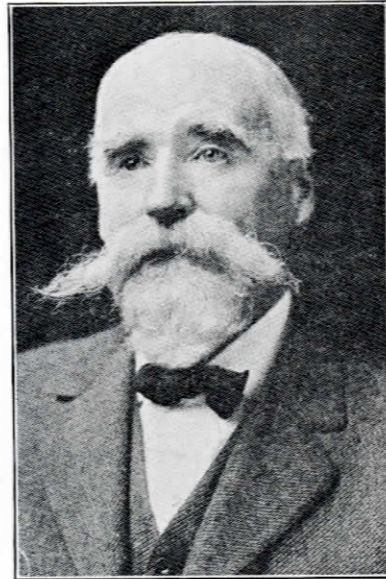
HENRY MILLER

Who was associated with his brother in the bakery and grocery business. This early day business man has three sons, well and favorably known, who are still connected with Moberly business life: Ed., Gus and Walter Miller.



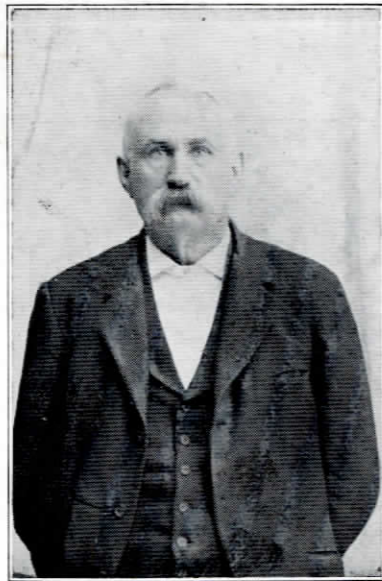
HENRY P. OSTRANDER

A well known character to old citizens. He was a jolly fellow and so remembered as the "Sunny Jim" of his day. Hauled rock for the foundation of the first brick house built here. He was the grandfather of Mrs. Hayes Louttit.



JAMES SANDISON

An enterprising man of sturdy, intelligent Scotch race. Came to Moberly in 1879 and engaged in the manufacture of brick and in contracting and building. He promoted and built the brick plant. Built the first sewer in 1886, and did the first paving on Reed street in 1889.



D. S. FORNEY

Was for many years a conspicuous figure and important factor in the commercial affairs of this city. It was he who started the first tobacco factory. In 1879 he engaged in the dry goods business and later owned a large furniture store. Three times he served the city as mayor and during his administration the first water works were built and the first sewer was dug and used.



DAVE WHITE

A member of the council in 1872, and an active citizen of early days who has watched Moberly grow from a corn field to her present size and attainments. Knows the city from A to izzard and is a walking cyclopedia of facts concerning oldtimers. Was a liveryman in days long before the coming of the "buzz" wagon.



MRS. MARY A. HEETHER

A widow who came to this county from Springfield, Ill., in stage coach days. Settled first in Huntsville and then in Allen. Came to Moberly in 1866, moving both family and house here. She and her six children found prosperity here as the result of their industry. Her son, Ad, did his first railroad work by driving a team for the excavation of the big tank pond and his last work as president of the Southern railroad. Her daughter, Mrs. George Braddick, is still a resident here.

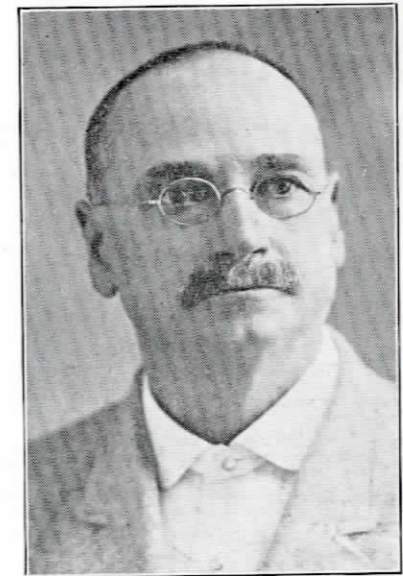


This house was moved to Moberly by Mrs. Mary Heether in 1868 from Old Allen, and is the only house moved here at that time which is still intact. It stands today on Horner street, west of the Moberly Light & Power Co.'s power plant.



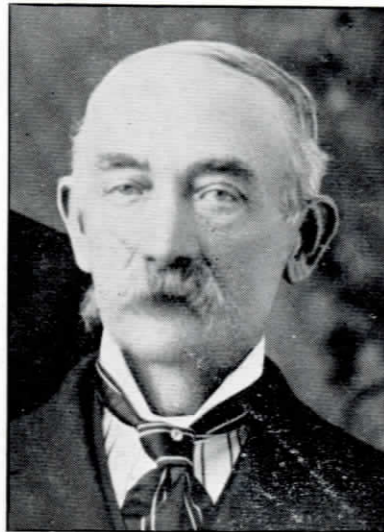
JOHN FAESSLER

An old settler who founded the J. Faessler Manufacturing Co. He was a man of inventive genius who invented a number of boiler-maker's tools, one of which was the Boss Flue expander, now known and sold around the world. The plant he established is now managed by his son, J. W. Faessler, who has added the Missouri Power Hay Press factory that has grown to be one of the big industries of the community.



HUSE MATHEWS

A life-time resident of this county. In 1858 he drove ox teams while plowing the right-of-way and hauling dirt to make the road bed for the old North Missouri railroad between Renick and Moberly. For this service he received thirty-five cents per day and boarded himself. He is Moberly's veteran saloon man and claims to have paid more into the city treasury than any other citizen. Besides this he has otherwise been an enterprising citizen and a liberal contributor of his means.



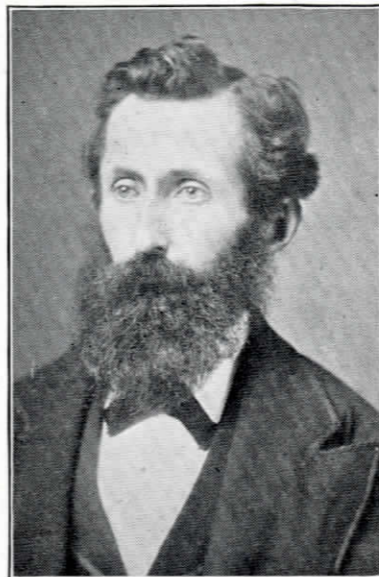
C. P. APGAR

Came to Moberly early in 1871. Two years later he was elected councilman at large. He engaged in the dry goods business under the firm name of Apgar & Morgan. This was Moberly's big store, occupying two rooms. Over the store on the second floor was Apgar's opera house. Later he was associated with Feldenheimer in the dry goods business. During the latter part of his life he was a letter carrier, working for "Uncle Sam" in this capacity for twenty-two years. Mr. Apgar died February 21, 1913, a respected and kindly remembered citizen.



JOHN NETH

Who operated the first cigar store in Moberly and made the cigar at that time known as the "Moss Agate." He opened business at 420 West Coates street, March 7, 1871, and also had a place later at 121 West Reed street. He now lives at 1124 Bond street.



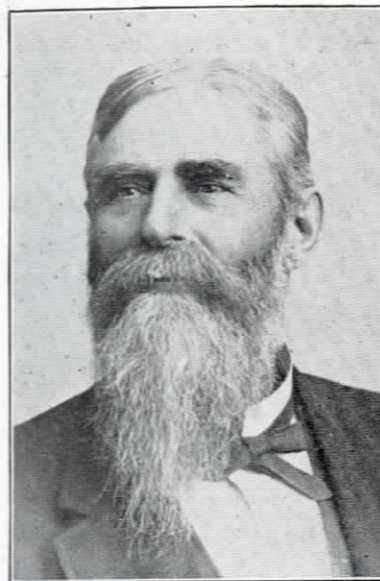
AUGUST WETTEROTH

Came to Moberly in the spring of 1868 and started a jewelry store in the second story of the building then located at the northwest corner of Clark and Reed streets. In the fall of that year he bought a lot and built a two-story frame house in the first block on Reed street and moved his stock to that location. He married Miss Lizzie Rupp, who survives him and now lives in St. Joseph.



JAMES TRUE

Served two terms on the board of trustees, being first elected in 1869. He was a member of firm of True & Briggs, contractors and builders. This firm was among the first of this kind here. Mr. True was a prosperous man in early days and an efficient counsellor in city affairs. He was the father of Arthur True, now living here.



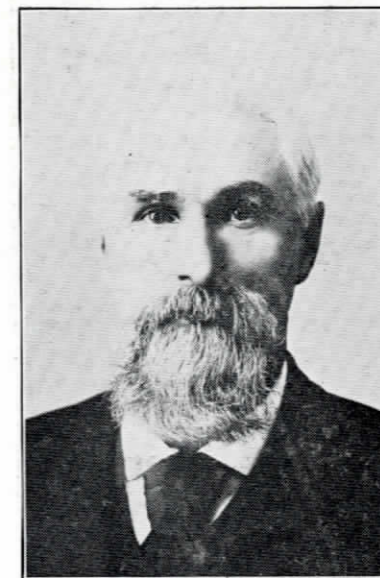
J. H. BURKHOLDER

This name was long identified with Moberly's progress. Old citizens yet recall Mr. Burkholder as the man who ran the saw-mill and had the distinction of sawing the lumber for the first houses that were built here.



G. W. DULANY

A pioneer who at one time was street commissioner and again was an efficient marshal in the year 1871. He lived to see the village grow into the Magic City of its present size.



JAMES CLARK

A veteran engineer who ran the first train into Moberly, on the old North Missouri. Possibly the most exciting of all his railroad experiences was given him by Bill Anderson and a few of his men on the morning of September 27, 1864. His train had among its passengers twenty-three paroled federal soldiers, returning to their homes on a furlough. Arriving in Centralia these soldiers were taken off the train, lined up near the railroad track and shot to a man. The train had been blocked by ties thrown across the track, then the engine was detached, run into the country and set afire. Mr. Clark and family lived here for many years. His daughter, Mrs. Clara Meredith, and his brother, John Clark, now live in Kansas City.



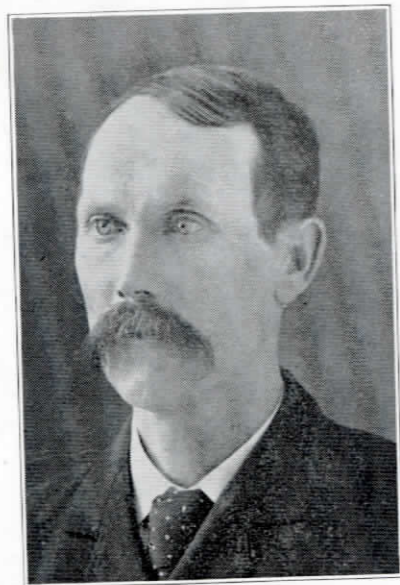
T. P. WHITE

Was the first mayor of Moberly, holding office from 1873-4. He was one of the stalwart men in the days when strong men were needed to push legislative matters, and he also served the public needs as proprietor of a general merchandise store.



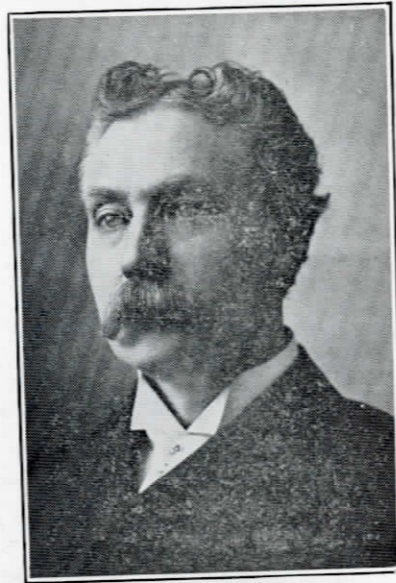
ARTHUR O'KEEFE

Known to both old citizens and new ones. In early days he was connected with the railroad business, serving as yard foreman, when he supervised the laying of the first side tracks. Later he was promoted to the position of road-master. He further continued his career by quitting the railroad corporation's service and in connection with his brothers, John, Joe and Will, entered business for themselves as retail grocermen. This business they soon outgrew and so launched into the wholesale grocery trade and they can now be found in a massive building on Coates street, the firm being the O'Keefe Bros. Grocer Co.



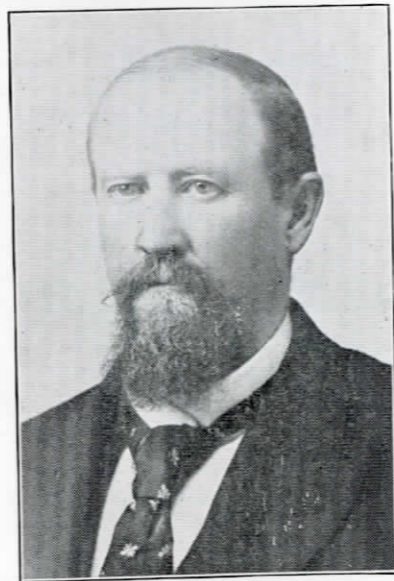
ZEPH WALDEN

This is a man who not merely worked to up-build little Moberly—he did it; being one of the first carpenters on the ground, and has continued to live here even to this day.



DR. THOMAS IRWIN

Came to Moberly in 1877, and because of his skill as physician and surgeon during the active part of his life was called far and near to minister to sick and wounded. He was a doctor who kept no books, whether patient was rich or poor he trusted for pay to their honesty and gratitude. Still he fared well financially. He was gathered to his fathers July 6, 1916, at the age of sixty-seven after a lingering illness.



DR. J. T. COX

In his day a Nestor in the medical profession in this city. He was born down Mark Twain way near the little town of Florida. He made his own start in life, as has many another young man, as a teacher. During that time he read medicine and later entered the Medical college at Cincinnati from which he graduated in 1870 and immediately came to Moberly. He built up a lucrative practice and lived here until his death, November 11, 1909.



REED STREET AT THE PRESENT, LOOKING EAST FROM FIFTH STREET TO UNION STATION

AVERAGE MONTHLY PAYROLL OF MOBERLY.

WABASH RAILWAY CO.

Transportation Department	\$67,751.30	
Mechanical Department	72,418.48	
Maintenance of Way	6,560.03	
Supply Department	5,017.18	
Miscellaneous	2,230.00	\$153,976.99

Factories, Wholesale Houses, Retail Stores, Construction Companies, with the exception of three, who refused to give their figures. (These statistics gathered by John B. Sherwood).....	120,496.72
Carpenters and Joiners Local Union. (Figures furnished by a committee consisting of A. E. Fifer, Wm. Sharp and J. B. Mathis).....	8,632.00
Painters, Decorators and Paper Hangers Union No. 656. (Estimated by W. S. Jones, R. B. Moore and W. H. Smith).....	1,800.00
Brick-Layers and Masons Union No. 11. (Estimated by Alex. Morrison and Tom Kellogg, Jr.).....	1,875.00
Servant Estimate:—Of families in our population, which we figure to be 15,000, we believe 500 employ servants at an average price of \$4.00 per week.....	8,000.00
Of families employing wash-women, we estimate 1,000 pay an average of \$1.50 per week. (Estimated by Geo. W. Sparks, Harry Solomon and John Walden).....	6,000.00
Court Officials at Moberly.....	1,000.00
Total.....	\$301,780.71

This does not include lathers, plasterers, insurance companies' employees, stenographers for doctors and lawyers, odd-job men, or teamsters.

GROWTH OF THE VOTE.

The first election held in Moberly was for the election of Trustees, June 6th, 1868. The best information available gives the vote cast at that time as seventy-four. The city records give an election, held May, 10, 1872, to vote on the purchase and donation of ground for building the shops, as resulting in 299 for, with 4 against. By the same authority, the vote cast December 9th, 1915, in the local option election, showed the city as having 3,113 votes.

MOBERLY PUBLIC SCHOOLS.

Prior to 1872 there was no regularly organized public school. Private schools were taught from time to time and short terms of public schools were held. W. Tandy O'Rear and Chas. Rodes were among the passing teachers.

In the year 1872 the first graded public school was organized, the principal being Prof. Tuck Powell. Among his assistants were N. E. Walker, G. N. Ratliff and Luther Terrill.

In the summer of 1876 began the erection of "Old Central," which stood for years at the corner of Johnson and Rollins streets. At the time of the purchase of the plot of ground for this building there was a thoroughfare called Phipp's Avenue, lying between this ground and Tannehill Park. This street was formally closed the next year.

The High School was organized in 1877 by Prof. Marion Bigley, who took charge of the schools as the first Superintendent. He re-organized the old First Ward school on the East Side, introduced new methods and was, in fact, the founder of the present school system.

In the fall of 1885 the frame building on East Rollins street was burned. It was not re-built. Instead the other part of the present building was erected in what was formerly Moss Park, at a cost of \$13,200.

West Park was built in 1884, at a cost of \$13,000. This building is located on a prominent hill in Northwest Moberly, and is a commanding landmark.

In 1893 came South Park, another fine building, which cost \$16,000.

On the evening of December 5, 1894, the old Central building burned to the ground. An issue of bonds was at once voted by the people to erect a new and up-to-date building on the same ground.

The first commencement of the High School was held in the "Wigwam," a big frame building erected on the corner of Reed and Fifth streets, in the spring of 1880 to accommodate the democratic state convention. The "Wigwam" seated about 3,000 people and was crowded to its limits with those attending the exercises.

The graduating class consisted of Will A. Rothwell and Arthur Grimes. Will Rothwell delivered the valedictory address and Arthur Grimes the salutatory. During the evening Superintendent Biglow was presented with a handsome heavy gold-headed cane. This was the gift of the students of the High School, and the presentation speech was made by Hon. F. P. Wiley. The diplomas were presented to the two graduates by Dr. W. A. Rothwell, president of the Board of Education, assisted by S. C. Mason, Secretary. The class of 1916 contained fifty-four graduates.

The school facilities were increased in 1913 by the erection of a modern building in north-east Moberly and the addition of two rooms each to East and West Park, and later a new \$15,000 school for colored children was erected at the corner of Franklin and Horner streets. In 1916 a bond issue of \$100,000 was voted for two additional buildings and improvements on the old.

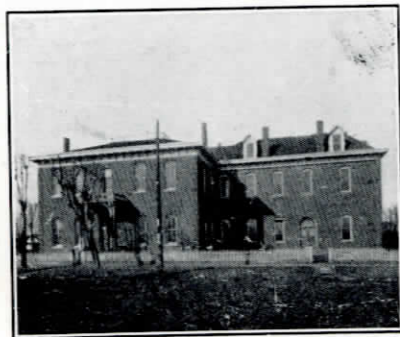
Following is a list of those who have served as superintendents: Marian Biglow, James A. Rice, L. E. Wolfe, W. D. Dodson, W. E. Coleman, J. A. Whiteford, J. C. Lilly and E. M. Sipple.

Those who have served as Presidents of the Board of Education: I. B. Porter, W. T. McCanne, Dr. W. A. Rothwell, W. Simonds, Westley Humphrey, R. C. Murray, Dabney Proctor, E. R. Hickerson, W. H. Morris, F. G. Ferris, J. S. Bowers, A. B. Little, and Dr. C. B. Clapp.

PAROCHIAL SCHOOLS.

In addition to the Public Schools there are two Parochial Schools doing excellent work. The oldest of these is St. Mary's Academy, which is in charge of Sisters of Loretto. The school was started under the pastorate of Father McKenny in 1877, with Sister Philippi as the first Mother Superior. The building is located at the corner of Ault and Farror streets. At present Sister Christine is the Mother Superior, and associated with her are, Sisters Josephine, Casimer, Anunciata, Alacopue, Elvira and Alexis. Sister Alacopue is the music teacher; the other branches taught are the eight grammar grades and one year of high school work. The building is a commodious brick structure, and excellent work is done.

The school in connection with the Immaculate Conception Church was founded by Father Straubinger, in 1888. This school prepares its pupils for high school. It is well attended and has for its capable teachers, Sisters Leona and Fatima, under the direction of the present pastor of the church, Father Thomas Lustenburger.



ST. MARY'S ACADEMY



WOODLAND HOSPITAL, ESTABLISHED IN 1909. OWNED AND CONDUCTED BY DR. C. B. CLAPP.
346 WOODLAND AVENUE.

WABASH OWNERSHIP.

Memorandum showing the various titles or names under which the Wabash Railway Company, with branches west of Moberly, have been operated, and dates of each of the same:

The North Missouri Railroad Company, from 1869 to August 26th, 1871.

Morris K. Jessup, from August 26th, 1871, to February 6th, 1872.

St. Louis, Kansas City and Northern Railway Company, from February 6th, 1872, to November 14th, 1879.

Wabash, St. Louis & Pacific Railway Company, from November 14th, 1879, to September 30th, 1887.

Wabash Western Railway Company, from September 30th, 1887, to August 1st, 1889.

Wabash Railroad Company, from August 1st, 1889, to 1915.

Wabash Railway Company, from 1915 to date.

Glasgow Branch—Salisbury and Glasgow R. R. Co., from December 13th, 1875, to September, 1876.

St. Louis, Kansas City & Northern Railway Company, from September, 1876 to November 14th, 1879.

Since 1879, same title as main line.

Brunswick & Chillicothe Railroad—Brunswick to Chillicothe, leased line.

Leased to St. Louis, Kansas City & Northern Railway, August 1st, 1878.

For subsequent transfers see main line.

St. Louis, Council Bluffs & Omaha Railroad—Chillicothe to Pattonsburg, leased line.

Leased to St. Louis, Kansas City and Northern Railway Company, June 20th, 1878. For subsequent transfers see main line.

Council Bluffs and St. Louis Railroad Company—Pattonsburg to Iowa state line.

St. Louis, Kansas City & Northern Railway Company, from February 10th, 1879, to February 14th, 1879.

For subsequent transfers see main line.

Council Bluffs & St. Louis Railway Company—Iowa State Line to Council Bluffs; leased to St. Louis, Kansas City and Northern Railway Company, February 10th, 1879.

For subsequent transfers, down to November 1st, 1901, see main line.

Deed from Council Bluffs and St. Louis Railway to Wabash Railroad Company, conveying full title of property, November 1st, 1901.

LIBRARY.

The free public library building was the gift of Andrew Carnegie. It was completed in 1904 at a cost of \$20,000, and is supported by taxation and kept open day and evening six days in the week. Mrs. Bessie Lee, librarian.

This institution is the culmination of the efforts of the first Association, formed in 1872, whose president was T. P. Whie; secretary, Wm. Maynard.

Through varying fortunes and under different names library organizations have existed from that time to the present. The railway employes took a leading part. In the fall of 1900 the Wabash Railroad Company, which had been giving its assistance, withdrew its help to give to the new Y. M. C. A. The Railroad Library Club then faced the problem of support and for advice turned to G. R. Rothwell, who suggested making use of the new state law, permitting cities to maintain



MOBERLY FREE PUBLIC LIBRARY

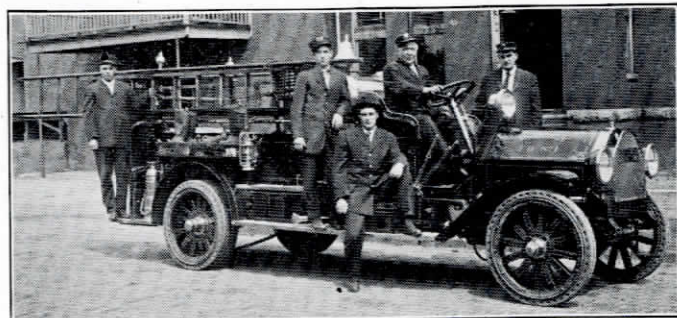
public libraries by taxation. This was favorably received and a committee was appointed, consisting of Messrs. Rothwell, Lowell and N. E. Walker, to manage the movement for establishing a public library. The matter was voted on April 2nd, 1901 and the tax authorized.

The first board of directors under the new law consisted of Gus Ginther, N. E. Walker, J. A. Whiteford, Dr. J. T. Fry, A. B. Ruby, W. D. Danley and F. G. Ferris.

Of the Commercial Club members who were active in working for the Carnegie building may be mentioned, President J. R. Lowell, Rolla Rothwell, Dr. C. B. Clapp, Jno. O'Keefe, L. E. Frost, R. A. Curran, E. B. Mahan, G. J. Ginther and Harvey Baker.

PUBLIC SPIRIT 36 YEARS AGO.

In 1880 the State Democratic Convention was held here. There was no building to house this gathering, so it was up to the citizens to provide one. At that time the population was about one-third its present number and there were few men of large financial holdings; notwithstanding, a committee consisting of Ben Levy, Pat Carmody and Martin Curry got busy and in three days had raised \$3,200. With this a structure called the "Wigwam" was built, sufficient for all needs. Thus it was proved that "tightwads" were few in this city in its early days.



MOBERLY FIRE DEPARTMENT

J. D. Crews, Chief and driver; Mose Alexander, assistant driver and nozzleman; Ira Davis, hoseman; Elsworth Warner, hoseman; John Ryner, plugman and hoseman.

CONTRACT ENTERED INTO BY AND BETWEEN THE INHABITANTS OF THE TOWN OF MOBERLY, MISSOURI, AND THE ST. LOUIS, KANSAS CITY & NORTHERN RAILWAY CO., AND LOCATING THEIR MAIN SHOPS AT MOBERLY.

This contract, made and entered into this day of April, A. D., 1872, between "The Inhabitants of the Town of Moberly, Missouri" of the First Part, and the St. Louis, Kansas City and Northern Railway Company, of the Second Part, Witnesseth: That said party of the First Part, for the consideration hereinafter set forth, hereby binds itself to make a perfect title in Fee to the Party of the Second Part, to the following described lands, situate in the County of Randolph and State of Missouri, viz: All of the land not now belonging to said Party of the Second Part within the lines as marked on a plat filed in the office of the Attorney of said Party of the Second Part, marked "Exhibit A," and designated as the plat here referred to by the signature of William A. Hall, which said land is north of said town of Moberly and contiguous thereto, and to the land now held by said Party of the Second Part and is between the Main Line and the West Branch of said Railway, and also six-hundred and eighteen (618) acres on the West Branch of said Railway, as designated on said plat, about one and a half miles west of said land first above described, subject to a Coal Lease on Two Hundred acres, on the west part of said land—(the rents and profits of which shall enure to the said Party of the Second Part) all of which appears on the said plat, and said Party of the First Part, in consideration, etc., as aforesaid, further binds itself to pay any and all taxes that may be levied by the authorities of said town of Moberly, on the property now owned, and on the property to be conveyed under this contract, by said Party of the First Part to said Party of the Second Part, for the period of twenty years from, and after, this date; and if any other Municipal Corporation shall be created to cover said lands, the said Party of the First Part binds itself nevertheless to pay any and all town or municipal taxes that may be levied, or assessed, by such Municipal Corporation so created, on the said property now owned and which is to be conveyed to said Party of the Second Part, as aforesaid, for the full period of twenty years.

And said Party of the First Part further binds itself, that no roads, streets or alleys shall be made over, through or across the said land to be conveyed by them to the said Party of the Second Part, adjoining said town, without the consent of said Company, and that said Party of the First Part will have vacated any streets or alleys which may now be located on said lands, and binds itself that it will forever oppose any extension of the corporate limits of the said town of Moberly, over the said land to be conveyed by said Party of the First to the said Party of the Second Part, adjoining the said town, and further, that it, the said Party of the First Part will not accept any law authorizing any extension of the corporate limits of said town that will include the property referred to in this agreement without the consent of the said Party of the Second Part, and said Party of the First Part further binds itself to perfect the title in Fee to said Party of the Second Part, and deliver possession of the lands adjoining the town as above described in ten days, except so much as has belonged to a minor heir which shall be perfected in forty-five days, and that it will perfect the title to the six hundred and eighteen acre tract subject to the Coal Lease in thirty days, and that it will have vacated the streets and alleys on said land adjoining town in ninety days. In consideration whereof said Party of the Second Part hereby binds itself to said Party of the First Part to permanently locate their principal Car and Machine Shops within the limits of the land adjoining said town of Moberly, to be conveyed by said Party of the First Part to the said Party of the Second Part, as shown by the plat referred to.

In Testimony Whereof, the said Party of the First Part has caused this contract to be signed by the Chairman of the Board of Trustees of the town of Moberly, and the seal of said Corporation to be hereunto affixed, and the said Party of the Second Part has caused the same to be signed by its president, and its corporate seal to be hereunto affixed on the day and year first above written.

B. Y. N. CLARKSON,

Chairman of Board of Trustees, of the Town of Moberly, Missouri.

Attest:

In Witness Whereof, I, J. W. Dorser, Clerk of the Board of Trustees, of said town of Moberly, do hereby affix my name and the corporate seal of said town of Moberly, at office in said town, this second day of April, A. D., 1872.

J. W. DORSER,

Clerk.

(L. S.)

St. Louis, Kansas City & Northern Railway Co.

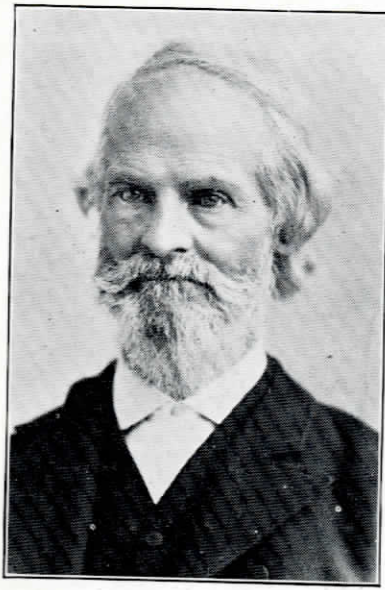
By T. B. Blackstone, President.

(L. S.) Corporate Seal.

Attest: James F. How, Secretary.

CITIZENS' BOND FOR THE FAITHFUL PERFORMANCE OF SHOPS CONTRACT.

Know All Men By These Presents, That we, H. M. Porter, J. H. Burkholder, T. P. White, M. Jennings, E. H. Miller, O. F. Chandler, John T. Young, D. B. White, I. B. Porter, William Firth, N. B. Coates, S. P. McCormick, Henry Morgan, B. Y. N. Clarkson, William Seelen, W. D. Pegram,



JUDGE WM. A. HALL

Who drew the contract and represented the city in closing the deal with the St. Louis, Kansas City & Northern railroad at the time of the removal of their shops from St. Charles to this city. Judge Hall prior to 1861 was circuit judge. In 1861 he was elected to congress, serving until the close of the war. He was a strong union man with a leading influence in political circles. He was recognized as an able lawyer, and besides being a jurist kept near to nature by living on a farm of his own which was recognized as one of the finest in the vicinity of Huntsville. His son, U. S. Hall, was one of the early teachers in Moberly; both he and his brother, C. W. Hall, of St. Louis, are still well known to citizens here.

John B. Freeman, Adam Given, S. Jones, B. F. Porter, J. T. Aldridge, C. Fiser, Erwin Gay, C. W. Dawson, C. Otto, P. H. Nise, Geo. T. Goldsmith, N. B. Coates, W. F. Bowmans, hereby bind ourselves, our heirs, etc., to the St. Louis, Kansas City & Northern Railway Company in the sum of One Hundred Thousand dollars, upon the terms and conditions following, to-wit:

Whereas, The inhabitants of the Town of Moberly, in Randolph County, Missouri, have submitted a proposition to the said Railroad Company for the purpose of inducing and assisting said Company to locate on lands donated to said Company by said Town, adjoining said Town on the north, their principal Car and Machine Shops of said Company. And said Town also proposed to and donated to said Company, six hundred and eighteen acres on the line of the West Branch of said Road, known as the Horner Farm.

And Whereas, The said Company has duly accepted said proposition of the said Inhabitants of the Town of Moberly; now, therefore, if said Inhabitants of the Town

of Moberly shall furnish to, or cause to be furnished to, said Company, a good and complete title in Fee Simple to all of the lands named in said proposition, subject, however, to the Coal Lease therein mentioned, then this bond to be void, otherwise to remain in full force and virtue.

In witness whereof, we have hereunto subscribed our hands and seals this first day of April, A. D., 1872.

GEO. W. DULANY
J. P. MILLER
J. W. BURKHOLDER
S. P. McCORMICK
O. F. CHANDLER
D. B. WHITE
I. B. PORTER
E. H. MILLER
H. M. PORTER
B. Y. N. CLARKSON

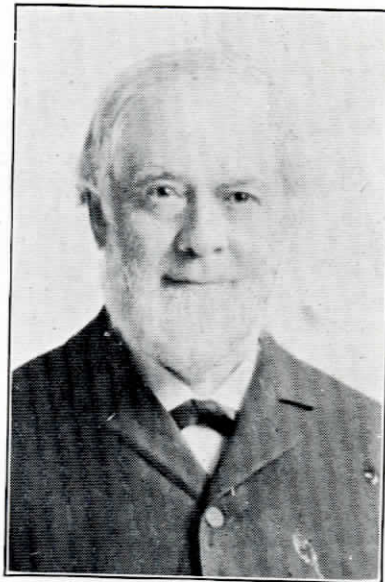
WILLIAM FIRTH
JOHN T. YOUNG
M. JENNINGS
W. P. WHITE
J. B. FREEMAN
M. B. PEGRAM
ADAM GIVEN
S. JONES
B. T. PORTER
JOHN T. ALDRIDGE

CHAS. TISUE
ERWIN GAY
C. W. DAWSON
CHRISTIAN OTTO
P. H. NISE
GEO. T. GOLDSMITH
N. B. COATES
W. F. BARROWS
C. FISER

Filed for record July 20th, 1889, at 1:00 o'clock p. m.

JNO. N. HAMILTON, Deputy Recorder.

J. C. SAMUEL,
Recorder.



ISAAC S. STURGEON

Was president and superintendent of the St. Louis, Kansas City & Northern Railway Company. The town of Sturgeon and the street in this city that bear his name are perpetual reminders of him. Mr. Sturgeon came to St. Louis from Kentucky in 1844, studied and practiced law. Was elected state senator in 1852. He was assistant United States treasurer, stationed in St. Louis, under Presidents Pierce and Buchanan, being relieved of this office by President Lincoln. December 16, 1858, he married Miss Anne Allen, daughter of G. Allen, the builder of railroads. Mr. Sturgeon lived and died at the Allen homestead, around which was written the story of the "Crisis" by Winston Churchill, most of the characters being taken from members of this home, and their friends. It was here that Mr. Sturgeon died in 1912.

FROM MOBERLY'S FIRST NEWSPAPER.

The Moberly Herald was Moberly's first newspaper, published on the first of each month, by W. E. Grimes. The first issue appeared on Wednesday, March 10, 1869. The following is taken from the second issue:—

Officers of the Town.

Trustees: A. T. Frankiin, President; Chas. Tisue, L. Brandt, Asa Bennett, Wm. Seelen. Marshal, Martin Howlett. Justice of the Peace, E. Sidner. Constable, Chas. Featherston. Notary Public, W. E. Grimes. Postmaster, C. Tisue. Merchants' Union Express Agent, C. Tisue.

Moberly Business Directory.

J. J. & G. W. Jones, Dry Goods, Etc., Coates Street, East of Railroad. T. P. White, Dry Goods, Clothing, Etc., Corner Clark and Reed Streets. Mrs. Foose, Milliner, South Side Reed St. Mrs. E. Werden, Milliner, North Side Reed Street. Berry & Harmon, Family Groceries, Clark Street. E. H. Miller, Grocery and Bakery, Sturgeon Street. H. Overberg, Meat Market, Reed Street. Wm. Seelen, Hardware and Cutlery, Reed Street. B. Y. N. Clarkson, Reapers, Mowers and Threshers, Reed Street. Chandler & Adams, Druggists, Corner Reed and Clark Streets. L. Brandt, Boots and Shoes, Corner Reed and Sturgeon Streets. Wm. E. Grimes, Real Estate, South Side Reed Street. J. D. Werden, Real Estate and Insurance, Reed Street. I. B. Porter, Attorney at Law, Real Estate and Insurance Agent, Reed Street. North Missouri Coal & Mining Company, Sturgeon Street. J. S. Clarkson & Company, Fruit Trees, Hedge and Shrubby, Reed Street. E. H. Petering, Lumber, Coates Street. True & Briggs, Contractors and Builders, Clark Street. Joseph Anson, Carpenter and builder, Williams street. W. K. Christian, Resident Dentist, Residence, Fifth Street. Dr. J. C. Tedford, Physician, Coates Street. Dr. C. Adams, Physician, Corner Clark and Reed Streets. Tate's Hotel, S. P. Tate, Proprietor, Corner Clark and Reed Streets. Wm. Teeters, Restaurant, Reed Street. O. N. Kaan, Barber and Hair Dresser, Reed Street. Manlin & Co., Saloon, Southwest Corner Reed and Sturgeon Streets. P. McLarney, Moberly Saloon, Sturgeon Street. J. D. Bailey, Carpenter and Builder, Williams Street. J. H. McQuaid, Lumber Dealer, Moulton Street, East of Railroad.

New Firm—New Goods—New Prices.

T. P. White having purchased the stock of goods of Tate & Bennett, will continue the business at their old stand, under Tate's Hotel, Moberly, Missouri. He is now purchasing and will bring to this city the largest and most complete assortment of Dry Goods, Notions, Hats, Clothing, Groceries and Queensware.

"The War is Over at Last."

I have a house and lot in Moberly, Missouri, which I would sell. Located on Williams street only two blocks from the depot. Lot, fifty foot front, running back 120 feet. Good fence, cistern, etc.. House contains three good rooms, and would rent for about \$15.00 per month. Price \$1000. Title perfect.—J. D. Bailey.

For Sale.

Two hundred and fifty-six acres of good land, lying two and a half miles east of Jacksonville, ninety acres in cultivation, balance in timber. Improvements consist of a double log house, two stories high, stable, etc., never failing water, saw-mill and carding machine within one mile. Price \$12.50 per acre.

A farm of 105 acres in Monroe county, lying within three and a half miles of Middle Grove and about the same distance from Madison. Improvements consist of a frame house containing four rooms, stables moderately good, smokehouses and other out-buildings; good water, a young orchard of select fruit, seventy acres of farm in cultivation, remainder in pasture and timber. Price \$22.50 per acre.

Twenty-two acres of unimproved prairie land, lying within one-half mile of Moberly. Price \$40.00 per acre.

A large and commodious hotel in the flourishing town of Renick; building new, two-story frame, 30x40 feet, with fifteen rooms. Situated near depot, doing a good business. Price \$2000.

The Hannibal and Moberly Railroad.

Mr. McNally, one of the gentlemanly contractors of the Hannibal and Moberly Railroad, informs us that at present they are working about one hundred hands on that part of the road that lies between this place and Paris, a distance of twenty-four miles, and that the whole line is being pushed to an early completion. So we may reasonably conclude that within a year the quiet citizens of Paris will be startled by the shrill whistle of the locomotive. The iron is already being laid down on the Naples and Hannibal Railroad, and when finished will fill a gap in the most important direct line of road across the continent.

LIST OF OFFICERS OF ORIGINAL TOWN OF MOBERLY FROM 1868 TO 1872

	BOARD OF TRUSTEES	MARSHAL	CLERK	ATTORNEY	TREASURER	ASSESSOR	COLLECTOR	OTHER OFFICERS
1868	A. T. Franklin, Chairman; Chas. Tissue, Asa Bennett, Louis Brandt, Wm. Seelen	S. L. Austin† E. Sidener† Martin Howlett	J. W. Dorser	W. E. Grimes	Wm. Williams† W. S. Tompkins	Martin Howlett	
1869	A. T. Franklin, Chr.; Chas. Tissue, Wm. Seelen, James True, Elijah Williams	Martin Howlett	I. B. Porter	W. E. Grimes (died) C. J. Tannehill	B. Y. N. Clarkson	Martin Howlett	Street Com., M. Howlett Ass't Mar., Isaac Jacobs
1870	A. T. Bunker, Chr.; D. W. Brinkerhoff, I. B. Porter, W. Seelen, A. T. Franklin*	Martin Howlett† I. W. Boucher† Geo. W. Dulany	Ben T. Porter	Ben T. Porter	C. J. Tannehill	Jas. B. Dameron	Isaac Boucher	Ass't Mar., Isaac Jacobs
1871	B. Y. N. Clarkson, Chr.; H. M. Porter, James M. S. Berry, D. S. Forney, Jas. R. True, J. H. Burkholder, J. H. McQuaid, J. W. Haynes	Geo. W. Dulany	J. W. Dorser	Ben T. Porter	Chas. Tissue	E. Sidener	Wm. W. Porter	Street Com., W. Judah. City Eng., C. H. Wentz. Sexton, W. A. Whitney. City Weigher, J. Hutton
1872	J. B. Freeman, Chr.; J. H. Burkholder, H. M. Porter, Peter Fox†, J. Grimes, E. T. Tucker†, D. B. White, J. B. Damersont, W. D. Pegram	J. W. Ragsdale	J. W. Dorser	Ben T. Porter	T. P. White	D. S. Forney	Wm. W. Porter	Dep. Mars., J. V. Baker, W. D. Davis, City Eng. C. H. Wentz, Sexton, W. A. Whitney.

† Resigned. † Resigned Oct. 7, 1872. Succeeded by J. T. Young, C. P. Apgar and J. V. McNeely. * Resigned Sept. 26, 1870. Records do not show name of successor.

LIST OF OFFICERS OF INCORPORATED CITY OF MOBERLY FROM 1873 TO 1877

	MAYOR	COUNCILMEN	MARSHAL	CLERK	ATTORNEY	TREASURER	ASSESSOR	COLLECTOR	POLICE JUDGE	SEXTON	OTHER OFFICERS
1873	T. P. White	C. P. Apgar, at large; H. C. Moss, J. T. Kimbrough, Wm. Seelen, H. Morgan, B. R. White, D. H. Fitch.	J. W. Ragsdale	C. B. Rodes	B. T. Porter		J. H. Phillips	J. B. Sherwood	W. A. Whitney	Wm. A. Wight	City Phys., Dr. W. A. Rothwell, Street Com. Wesley Judah, Police, J. V. Baker, S. S. Sanford
1874	J. H. Burkholder	W. L. Durbin, at large; M. R. Burns, H. C. Moss, Terence Clark, H. Morgan, T. B. Patton, G. F. Rothwell.	J. V. Baker	C. W. Oak	S. S. Mc-Noughton	E. H. Miller	W. T. O'Rear	J. B. Sherwood	J. B. Dameron	Wm. A. Wight	City Eng., A. B. McGaffey, St. Com., J. D. Bailey, Fire Eng., Thos. A. Butterly.
1875	W. L. Durbin	C. S. Buck, at large; J. A. Scott, W. R. Mealer, Wm. Seelen, Terence Clark, W. T. McCanne, T. B. Patton	J. W. Howard	C. W. Oak	H. S. Priest	E. H. Miller	W. T. O'Rear	J. B. Sherwood	J. B. Dameron	Wm. A. Wight	Street Com., Eli Owens, Dep. Mar., B. Duffy, A. J. Dunlap.
1876	J. C. Hickerson	Terence Clark, W. L. McCart, at large; J. Campbell, J. A. Scott, Paul Roche, Wm. Seelen, W. A. Rothwell, W. T. McCanne.	J. W. Howard	Wm. Oak	F. P. Wiley	W. L. Young J. L. Woolfolk	W. T. O'Rear	J. B. Sherwood	J. D. Werden	Wm. A. Wight	St. Com., W. L. Jourdan, Fire Eng., W. H. Jarbou, Jas. McIntosh, Dep. Mar. D. P. Merry.
1877	J. C. Hickerson	R. R. Haynes, at large; O. T. Rouse, John Campbell, N. F. Haworth, Paul Roche, W. A. Rothwell, N. B. Coates, S. J. Goodfellow.	J. W. Howard G. T. Galbreath	Wm. Oak	U. S. Hall	J. L. Woolfolk	M. T. Williams	J. B. Sherwood	I. W. Boucher	J. A. Scott	St. Com., B. C. Clark, Fire Eng., H. S. Readon, Dep. Mar., D. P. Merry, Wm. Shaw.

LIST OF OFFICERS OF INCORPORATED CITY OF MOBERLY FROM 1878 TO 1888

	MAYOR	COUNCILMEN	MARSHAL	CLERK	ATTORNEY	TREASURER	ASSESSOR	COLLECTOR	POLICE JUDGE	SEXTON	OTHER OFFICERS
1878	W. T. McCanne	W. F. Elliott, at large; O. T. Rouse, Dr. Thos. Irwin, J. M. Kiely, N. F. Haworth, W. A. Rothwell, S. J. Goodfellow.	G. T. Galbreath	Richard Brooks	W. J. Hollis	A. B. Thompson	M. T. Williams	John H. Gravely	J. S. Wayland	J. T. Kimbrough John Bergstres'er	St. Com. A. J. Haworth, Fire Eng., M. Murphy, G. J. Millington, Dep. Mar., Wh. Shaw.
1879	J. H. Burkholder	C. P. Apgar, at large; Dr. T. Irwin, A. O'Keefe, Winslow Buck, J. M. Kiely, W. A. Rothwell, H. Jennings.	G. T. Galbreath	C. B. Rodes	B. T. Hardin	A. B. Thompson	J. D. Bailey	John H. Gravely	I. W. Boucher	B. R. White	Fire Eng., A. W. Montague, Dep. Mar. Wm. Shaw.
1880	G. L. Hassett	P. J. Carmody, at large; A. O'Keefe, Wilson Robertson, Winslow Buck, J. Evans, W. A. Rothwell, H. Jennings.	J. E. Lynch	J. R. Lowell	B. T. Hardin	A. B. Thompson	F. E. P. Harlan	R. A. Wilson	Zach Fisher	B. R. White	St. Com., W. Love, Fire Eng., A. W. Montague, Mr. Walsh, Dep. Mar., Geo. Keating
1881	P. J. Carmody	Hiram Jennings, at large; W. Robertson, J. D. Lipscomb, Winslow Buck, J. J. T. Evans, E. H. Mix, W. A. Rothwell, J. H. Miller.	J. E. Lynch	C. T. Hunn	J. W. Dorser	A. B. Thompson	W. T. O'Rear	R. A. Wilson	Zach Fisher	B. R. White T. F. Priest	St. Com., G. W. Dulany, Dep. Mar., Geo. Keating
1882	P. J. Carmody	B. R. White, at large; J. Q. Mason, J. D. Lipscomb, E. H. Mix, M. A. Hayes, J. H. Miller, J. T. Williams, Wm. Coyle.	J. E. Lynch	C. T. Hunn	J. W. Dorser	Hiram Jennings	W. T. O'Rear	J. B. Davis	Zach Fisher	W. Morgan	City Phys., W. A. Rothwell, Street Com., J. T. Kimbrough, Dep. Mar., G. Keating, O. P. Stiger
1883	D. S. Forney	A. E. Simons, at large; W. A. Chisholm, J. Q. Mason, J. E. Camplin, E. H. Mix, M. A. Hayes, Norris Tuttle, Wm. Coyle.	George Keating	C. T. Hunn	W. B. Sanford	C. P. Apgar	W. T. O'Rear	J. B. Davis	D. A. Coates	T. F. Priest	City Phys., W. A. Rothwell, St. Com., J. T. Kimbrough, Dep. Mars., J. E. Lynch, T. G. Lowry
1884	D. S. Forney	A. E. Simons, at large; W. A. Chisholm, R. C. Murray, H. R. Suppe, M. A. Hayes, Norris Tuttle, A. O'Keefe.	George Keating	V. M. Tedford	W. P. Cave	J. T. O'Neal	M. V. Greene	C. T. Hunn	D. A. Coates	T. F. Priest	St. Com., J. T. Kimbrough, Fire Eng., J. E. Lynch, Policemen G. T. Galbreath, R. Butler, G. Conway.
1885	D. S. Forney	A. E. Simons, at large; J. Tagart, R. C. Murray, H. R. Suppe, M. A. Hayes, N. Tuttle, A. O'Keefe.	George Keating	John Floyd	W. B. Sanford	J. T. O'Neal	W. S. Boulware	Jerry Shaw	A. J. Featherstone	T. F. Priest	Fire Eng., J. E. Lynch, Health Officer E. R. Hickerson, Policemen, George Conway, R. Butler.
1886	A. B. Thompson	H. R. Suppe, at large; J. Tagart, Robert Little, F. Haley, M. A. Hayes, N. Tuttle, Enoch Deskin.	J. E. Lynch	John Floyd	W. B. Sanford	Geo. W. Sparks	C. M. Berry	John Pierce	A. J. Featherstone	T. F. Priest	Policemen, G. Keating, R. Butler.
1887	Theo. F. Priest	J. Sam Hedges, at large; R. Little, W. A. Chisholm, W. P. Thompson, Frank Haley, Enoch Deskin, J. W. Ragsdale.	J. E. Lynch	J. F. Rucker	Wm. Morrissey B. T. Hardin	Geo. W. Sparks	W. S. Boulware	John Pierce Wm. Oak	A. J. Featherstone	H. C. Rutherford	St. Com., J. H. White, Policemen G. Keating, R. Butler.
1888	R. R. Haynes	C. F. Campbell, at large; R. Little, W. A. Chisholm, W. P. Thompson, J. C. Hutton, H. P. Jennings, J. W. Ragsdale.	J. E. Lynch	J. F. Rucker	W. P. Cave	V. M. Tedford	W. S. Boulware	Jas. M. Williams	W. W. McNinch	B. R. White	St. Com., E. Silk, City Teamster, J. W. Brooks, Policemen, G. Keating, R. Butler, Joe Wiggins.

LIST OF OFFICERS OF INCORPORATED CITY OF MOBERLY FROM 1889 TO 1896

MAYOR	COUNCILMEN	MARSHALL	CLERK	ATTORNEY	TREASURER	ASSESSOR	COLLECTOR	POLICE JUDGE	SEXTON	OTHER OFFICERS
1889 R. R. Haynes	Tim Freeman, C. P. Willett, A. T. Franklin, Denis Hogan, H. P. Jennings, N. F. Haworth, C. Adams, H. O. Hannah, Louis Gross, J. C. Hutton, W. H. Wilson, F. E. Shuck.	J. E. Lynch	J. F. Rucker	W. P. Cave	V. M. Tedford	W. S. Boulware	Jas. M. Williams	W. W. McNinch	B. R. White	St. Com., A. H. Rice. Pres. Pro Tem, L. Gross. Policemen, G. Keating, R. Butler, G. M. Carter, D. P. Merry, Wm. Fox.
1890 R. R. Haynes	Tim Freeman, J. S. Chadwick, A. T. Franklin, J. W. Ragsdale, H. P. Jennings, N. F. Haworth, D. W. Wilson, H. O. Hannah, Louis Gross, C. P. Apgar, W. H. Wilson, A. D. Terrill.	J. E. Lynch	J. F. Rucker	W. P. Cave	V. M. Tedford	W. S. Boulware	Jas. M. Williams	W. W. McNinch	H. C. Rutherford	St. Com., J. W. Brooks, Pres. Pro Tem, L. Gross. Policemen, D. P. Merry, Wm. Fox, G. M. Carter.
1891 J. W. Ragsdale	Tim Freeman, J. S. Chadwick, A. T. Franklin, T. O. Adlick, T. F. Priest, N. F. Haworth, D. W. Wilson, G. M. Dulany, Wm. Firth, J. C. P. Apgar, W. H. Wilson, Geo. P. Shedd.	J. E. Lynch	J. F. Rucker	Will A. Rothwell	V. M. Tedford	Allen D. Terrill	Jas. M. Williams	W. W. McNinch	H. C. Rutherford	St. Com., J. E. Penn. Pres. Pro Tem, W. H. Wilson, City Eng., H. V. Estill. Policemen, R. Butler, D. P. Merry, W. Fox.
1892 J. W. Ragsdale	Tim Freeman, J. S. Chadwick, A. T. Franklin, T. O. Adlick, T. F. Priest, N. F. Haworth, J. S. Hedges, G. M. Dulany, J. W. Walden, C. P. Apgar, W. H. Wilson, Geo. P. Shedd.	J. E. Lynch	J. F. Rucker	Will A. Rothwell	V. M. Tedford	Allen D. Terrill	Jas. M. Williams	W. W. McNinch	H. C. Rutherford B. N. Hall	St. Com. J. E. Penn. Pres. Pro Tem, T. F. Priest, City Eng., H. V. Estill. Policemen R. Butler, D. P. Merry, W. Fox
1893 J. W. Ragsdale	A. B. McCoy, C. A. Settle, J. B. Hill, W. S. Jones, N. E. Walker, N. F. Haworth, J. S. Hedges, A. S. Hickerson, Louis Gross, C. P. Apgar, W. D. Bean, Geo. P. Shed.	J. E. Lynch	J. F. Rucker	Will A. Rothwell	V. M. Tedford	Wm. Oak	M. J. Tedford	W. W. McNinch	B. N. Hall	St. Com. W. P. Smothers Pres. Pro Tem, N. E. Walker, City Engineer H. V. Estill, Policemen W. Fox, J. E. Penn, C. L. Quayle, R. Butler.
1894 J. H. Babcock	A. B. McCoy, J. A. Medley, J. B. Hill, W. S. Jones, N. E. Walker, N. F. Haworth, J. S. Hedges, A. S. Hickerson, Louis Gross, C. P. Apgar, W. D. Bean, I. C. Miller.	J. E. Lynch Wm. Fox	A. B. Little	Will A. Rothwell	V. M. Tedford	Wm. Oak	M. J. Tedford	W. W. McNinch	B. N. Hall	St. Com. E. Silk. Pres. Pro Tem, L. Gross. City Eng., H. V. Estill. Policemen, W. Fox, J. Reynolds, John Haworth, J. E. Penn.
1895 W. P. Cave	A. B. McCoy, J. A. Medley, J. B. Hill, J. E. Camplin, N. E. Walker, N. F. Haworth, J. S. Hedges, J. M. Williams, Louis Gross, C. P. Apgar, W. H. Wilson, I. C. Miller.	Wm. Fox	A. B. Little	Alex H. Waller J. C. Williams J. W. Wight, Jr.	John B. Jennings	F. E. P. Harlan	M. J. Tedford	D. Proctor	B. N. Hall	St. Com., E. Silk. City Eng., H. V. Estill. Pres. Pro Tem, L. Gross. Policemen J. Reynolds, A. B. Clemson, Sid Broadwater, Ed. Ragsdale.
1896 W. P. Cave	A. B. McCoy, H. L. Lee, M. A. Arnett, J. E. Camplin, N. E. Walker, W. W. Babcock, A. S. Hickerson, J. M. Williams, Louis Gross, E. O. Doyle, W. H. Wilson, I. C. Miller.	Wm. Fox	A. B. Little	J. W. Wight, Jr.	John B. Jennings	F. E. P. Harlan	M. J. Tedford	D. Proctor	B. N. Hall	St. Com., E. Silk. City Eng., H. V. Estill. Pres. Pro Tem, N. E. Walker. Policemen, J. Reynolds, Sid Broadwater, E. W. Ragsdale, C. L. Quayle

LIST OF OFFICERS OF INCORPORATED CITY OF MOBERLY FROM 1897 TO 1906

MAYOR	COUNCILMEN	MARSHALL	CLERK	ATTORNEY	TREASURER	ASSESSOR	COLLECTOR	POLICE JUDGE	SEXTON	OTHER OFFICERS
1897 W. P. Cave	A. B. McCoy, H. G. Lee, M. A. Arnett, J. E. Camplin, N. E. Walker, W. W. Babcock, A. S. Hickerson, J. M. Williams, L. Gross, E. O. Doyle, W. H. Wilson, I. C. Miller	Wm. Fox	A. B. Little	J. W. Wight	J. B. Jennings	F. E. P. Harlan	M. J. Tedford	W. W. McNinch	B. N. Hall	St. Com., E. Silk. City Eng., H. V. Estill. Pres. Pro Tem, N. E. Walker. Policemen, J. Reynolds, S. Broadwater, A. J. Gilliam, H. A. Hatfield
1898 W. P. Cave	J. A. Tagart, C. W. Halliburton, J. J. Jones, J. E. McQuitty, N. F. Haworth, A. C. Dingle, I. C. Miller, W. F. Moore.	C. L. Quayle	N. E. Walker	J. W. Wight	J. B. Jennings	F. E. P. Harlan	M. J. Tedford	D. Proctor	B. N. Hall	St. Com., Wm. Driscoll. City Eng., H. V. Estill. Pres. Pro Tem, Jas. A. Tagart, J. E. Reynolds, S. Broadwater, A. J. Gilliam, H. A. Hatfield
1899 A. H. Waller	J. A. Tagart, C. W. Halliburton, J. J. Jones, J. E. McQuitty, N. F. Haworth, A. C. Dingle, I. C. Miller, W. F. Moore.	C. L. Quayle	L. L. Wayland	F. T. Woods	J. B. Jennings	F. E. P. Harlan	Wm. Fox	D. Proctor	B. N. Hall	St. Com., Jno. D. Crews. City Eng., W. H. Wilson. Pres. Pro Tem, A. C. Dingle, J. E. Reynolds, Sid Broadwater, A. J. Gilliam, E. Ragsdale, Elmer Stiles
1900 A. H. Waller	L. S. Gaines, Carter Baker, J. E. Camplin, F. C. Jacoby, A. C. Dingle, J. M. Williams, I. Weisberg, I. C. Miller	C. L. Quayle	L. L. Wayland	F. T. Woods	J. B. Jennings	F. E. P. Harlan	Wm. Fox	D. Proctor	B. N. Hall	St. Com., J. D. Crews. Eng., H. V. Estill. Police, R. Butler, E. Ragsdale, J. Reynolds, A. J. Gilliam, W. Osborne
1901 W. P. Cave	L. S. Gaines, Carter Baker, J. E. Camplin, F. C. Jacoby, N. F. Haworth, A. C. Dingle, I. C. Miller, W. F. Moore	C. L. Quayle	A. B. Little	F. T. Woods	J. B. Jennings	F. E. P. Harlan	L. L. Wayland	D. Proctor	B. N. Hall	St. Com., Mike Reeves. Eng., H. V. Estill. Police R. Butler, A. Gilliam, E. Ragsdale, W. Osborne
1902 W. P. Cave	John Ward, Dr. Burk, J. E. Camplin, E. B. Mahan, E. W. Roberts, J. M. Williams, J. W. Faessler, J. E. Ball	C. L. Quayle	A. B. Little	F. T. Woods	J. B. Jennings	F. E. P. Harlan	L. L. Wayland	D. Proctor	B. N. Hall	St. Com., M. Reeves. Eng. H. V. Estill. Police, R. Butler, E. Ragsdale, J. Reynolds, A. J. Gilliam, W. Osborne
1903 A. C. Dingle	John Ward, Dr. Burk, J. E. Camplin, E. B. Mahan, E. W. Roberts, J. M. Williams, J. W. Faessler, J. E. Ball	J. Patterson	R. R. Rothwell	Oak Hunter	J. B. Jennings	J. C. Bounds	L. L. Wayland	S. C. Griswold	B. N. Hall	Police, P. McGinnis, J. Hogg, S. Magruder, A. Davidson, St. Com., Jno. Crews, City Eng., H. V. Estill
1904 A. C. Dingle	John Ward, Dr. Burk, J. E. Camplin, E. B. Mahan, E. W. Roberts, J. M. Williams, J. W. Faessler, J. E. Ball	J. Patterson	J. F. Curry	Oak Hunter	J. B. Jennings	J. C. Bounds	L. L. Wayland	S. C. Griswold	B. N. Hall	Police, P. McGinnis, S. Magruder, A. Davidson, J. Hogg, Pres. Pro Tem, J. M. Williams, St. Com. J. Crews, City Eng., H. V. Estill
1905 A. C. Dingle	J. M. Williams, E. B. Mahan, J. Fowler, W. McGrew, J. E. Ball, E. W. Roberts, Perrine, J. P. Sinnock	J. Patterson	J. F. Curry	Oak Hunter	J. B. Jennings	J. C. Bounds	S. C. Griswold	B. O'Connell	B. N. Hall	St. Com., J. Crews. Policemen, J. Hogg, P. McGinnis, A. Davidson, S. Magruder, City Eng., H. V. Estill
1906 A. C. Dingle	J. M. Williams, J. W. Dygart, J. Fowler, W. L. McGrew, Perrine, J. P. Sinnock, W. P. Davis, J. Ball	J. Patterson	J. F. Curry	Oak Hunter	J. B. Jennings	J. C. Bounds	S. C. Griswold	B. O'Connell	B. N. Hall	Police, P. McGinnis, A. Davidson, J. Hogg, S. Magruder, City Eng., H. V. Estill.

LIST OF OFFICERS OF INCORPORATED CITY OF MOBERLY FROM 1907 TO 1916

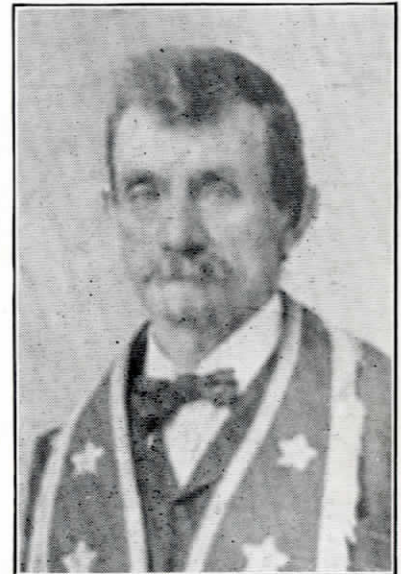
	MAYOR	COUNCILMEN	MARSHALL	CLERK	ATTORNEY	TREASURER	ASSESSOR	COLLECTOR	POLICE JUDGE	SEXTON	OTHER OFFICERS
1907	R. R. Rothwell	L. Gross, J. P. Sinnock, J. Lotter, W. P. Davis, C. B. Dysart, E. A. Willott, J. E. Ball, N. Robuck	John Hogg	J. F. Curry	Elmer Ball	H. J. Lotter	B. L. Young	W. E. Travis	B. O'Connell	B. N. Hall	Police, J. Patterson, P. McGinnis, S. Magruder, A. Davidson, St. Com., S. M. Love, City Eng., S. McDonald.
1908	R. R. Rothwell	O. R. Nise, J. P. Sinnock, J. H. Lotter, W. P. Davis, I. F. Harlan, E. A. Willott, N. Robuck, H. Owens	John Hogg	J. F. Curry	Elmer Ball	H. J. Lotter	B. L. Young	W. E. Travis	B. O'Connell	B. N. Hall	Police, J. Patterson, S. Magruder, P. McGinnis, A. Davidson, Eng. S. McDonald, St. Com., Love.
1909	R. R. Rothwell	O. R. Nise, J. J. Patrick, P. Packwood, W. P. Davis, I. F. Harlan, J. M. Williams, W. McGrew, Henry Owens	John Hogg	J. F. Curry	Elmer Ball	H. J. Lotter	B. L. Young	Will Short	B. O'Connell	B. N. Hall	Police, S. Magruder, J. Patterson, A. Davidson, P. McGinnis, Eng. S. McDonald, St. Com., S. M. Love
1910	R. R. Rothwell	O. R. Nise, J. J. Patrick, P. Packwood, L. Hunt, I. F. Harlan, J. M. Williams, W. McGrew, J. E. Ball	John Hogg	J. F. Curry	Elmer Ball	H. J. Lotter	B. L. Young	Will Short	B. O'Connell	B. N. Hall	Police, S. Magruder, P. McGinnis, J. Patterson, A. Davidson, Eng. S. McDonald, St. Com., S. M. Love
1911	W. P. Cave	O. R. Nise, P. B. Satterlee, C. B. Dysart, L. Hunt, I. F. Harlan, W. S. Turner, W. McGrew, J. E. Ball	Al Fleming	J. F. Curry	A. B. Chamier	H. J. Lotter	C. W. Hager	Will Short	F. Tedford	B. N. Hall	Police, J. Carroll, W. Hinton, P. McGinnis, M. Marshall, St. Com., A. G. Fidler, City Eng. S. McDonald
1912	W. P. Cave	F. M. Holsinger, P. B. Satterlee, C. B. Dysart, W. Biggers, I. F. Harlan, W. S. Turner, W. McGrew, J. E. Ball	Al Fleming	J. F. Curry	A. B. Chamier	H. J. Lotter	C. W. Hager	Will Short	F. Tedford	C. N. Baugh	Police, M. Marshall, P. McGinnis, W. Hinton, G. W. Osborne, City Eng. S. McDonald, St. Com., A. G. Fidler
1913	R. R. Rothwell	F. Holsinger, C. Baker, Wm. Biggers, J. Fowler, I. F. Harlan, W. S. Turner, W. McGrew, J. E. Ball	Wm. Hinton	J. F. Curry	A. B. Chamier	H. J. Lotter	H. Solomon	C. W. Kelly	F. Tedford	C. N. Baugh	Police, M. Marshall, S. Sparkman, J. Mize, W. French, City Eng., S. McDonald, St. Com., P. McGinnis.
1914	R. R. Rothwell	O. R. Nise, C. Baker, J. Fowler, Wm. Biggers, W. S. Turner, I. F. Harlan, W. McGrew, J. E. Ball	Wm. Hinton	J. F. Curry	A. B. Chamier	H. J. Lotter	H. Solomon	C. W. Kelly	F. Tedford	C. N. Baugh	Police M. Marshall, J. Mize, W. Johnson, Sam Sparkman, City Eng., S. McDonald, St. Com., P. McGinnis
1915	I. F. Harlan	J. Tomlinson, O. R. Nise, J. Fowler, W. Biggers, W. S. Turner, E. Hutchinson, W. McGrew, W. Butler	Wm. Hinton	J. F. Curry	W. B. Stone	H. J. Lotter	H. Solomon	C. W. Kelly	J. B. Adkisson	C. N. Baugh	Police, M. Marshall, J. Mize, J. Noel, H. Polson, City Eng., C. Haynes, St. Com., J. Hardwick
1916	I. F. Harlan	J. Tomlinson, O. R. Nise, J. Fowler, W. Biggers, W. S. Turner, E. Hutchinson, W. McGrew, Warren Butler	Wm. Hinton	J. F. Curry	W. B. Stone	H. J. Lotter	H. Solomon	C. W. Kelly	J. B. Adkisson	C. N. Baugh	Police, M. Marshall, J. Mize, H. Polson, J. Noel, City Eng., C. Haynes, St. Com., Joe Hardwick



A VIEW OF THE WABASH YARDS IN THE SHOPS DISTRICT

DIRECTORS OF THE MOBERLY PUBLIC SCHOOLS
FROM 1871 TO DATE

Name	Years of Service	President	Secretary	Treasurer
I. B. Porter	1871-1873	1871-1873		
D. B. White	1872-1874			
J. H. Burkholder	1871-1873			
J. T. Kimbrough	1872-1874			
E. H. Miller	1872			
Henry Morgan	1872-1878			1872-1878
W. F. Barrows	1873-1874		1871-1874	
W. T. McCanne	1873-1880	1873-1880		
H. C. Moss	1873-1874			
T. P. White	1874			
A. Steed	1874-1876			
S. C. Mason	1874-1881		1874-1881	
W. H. Selby 1	1874-1885			
W. A. Rothwell	1875-1882	1880-1882		
W. F. Elliott	1877-1883			1878-1883
Wm. Firth	1878-1879			
H. R. Crockett	1879-1881			
J. C. Kennedy	1879-1881		1881-1882	
W. J. Halleck	1881-1882			1883-1884
James Shaughnessy	1881-1884			
W. Buck	1881			
W. N. Rutherford	1881			
W. J. Hollis	1881-1882			
W. Simons	1882-1887	1884-1887		
Wesley Humphrey	1882-1884	1882-1884		
R. C. Murray	1882-1893	1887-1893		
U. S. Hall	1882-1888		1882-1883	
C. B. Rhodes	1883-1885		1883	
J. R. Lowell	1883-1901		1883-1901	
C. F. Campbell	1884-1889			1884-1889
Dabney Procter	1886-1895	1893-1895		
A. L. Bassett	1886-1899			
J. T. O'Neal	1887			1889-1901
J. S. Bowers	1888-1915	1901-1913		
A. W. Quackenbush	1889			
E. R. Hickerson	1890-1896	1895-1896		
W. S. Wagner	1890-1894			
W. H. Morriss	1893-1897	1896-1897		
W. K. Megee	1894-1897			
E. H. Fitzhugh	1895-1896			
F. G. Ferris	1896-1902	1896-1902		
N. E. Walker	1896-1913		1901-1913	
J. Thomas Coates 2	1897-1913			1901-1903
H. V. Estill	1899-1902			
Dr. G. O. Cuppaidge	1901-1904			
J. S. VanCleve	1902-1905			
W. L. Eddings	1902-1905			1903
George Manuel 3	1903-1914			
George Elsea	1905-1914			
C. H. Nelson	1905-1911			
W. S. Orr	1911-1914			
A. B. Little	1913-1915	1914-1915		
J. H. Davis	1913			
J. F. McLellan	1914			
Dr. C. B. Clapp	1914	1915	1914-1915	
Forrest Martin 4	1914			
Robt. T. Kingsbury	1915		1915	
A. B. Chamier 5	1916			



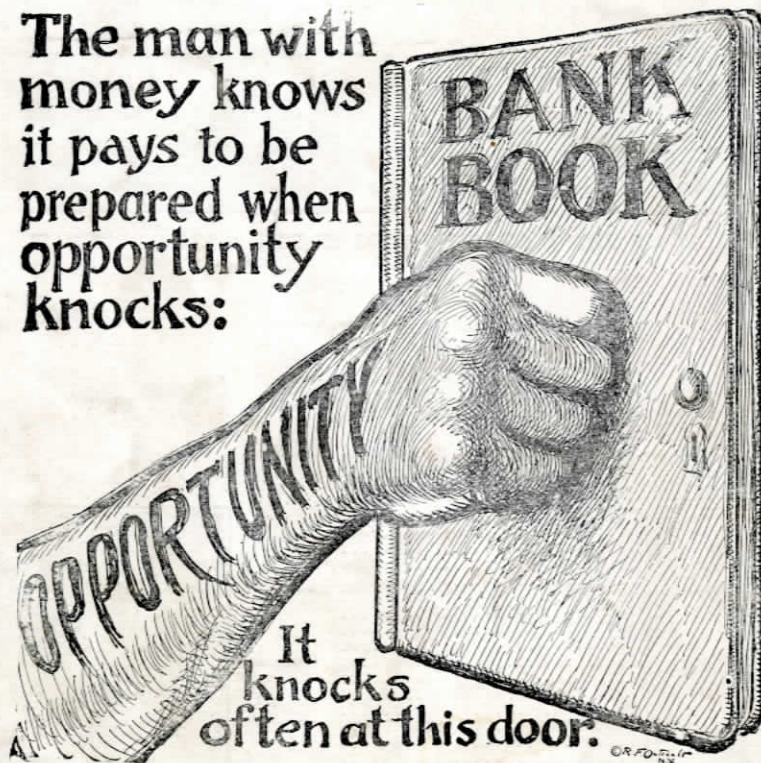
B. N. HALL

A long-time citizen of Moberly, respected by all who knew him. For twelve years he was sexton at Oakland cemetery. in that time he dug more than two thousand graves. He is a Confederate veteran, who loves old comrades as well as though they were brothers in the flesh. He is now living at the Confederate Home.

(1) Out 2 years, 1878-1880. (2) Out 1 year, 1903-1904. (3) Resigned 1914. (4) and (5) Appointed to fill vacancies.

12/30 15.00 3/ 1.75 15.75
 7/30 21.30 1.25 22.55
 2/30 31.30 3.25 34.55
 11/30 29.00 1.25 30.25
 10/30 28.00 1.25 29.25
 9/30 27.00 1.25 28.25
 8/30 26.00 1.25 27.25
 7/30 25.00 1.25 26.25
 6/30 24.00 1.25 25.25
 5/30 23.00 1.25 24.25
 4/30 22.00 1.25 23.25
 3/30 21.00 1.25 22.25
 2/30 20.00 1.25 21.25
 1/30 19.00 1.25 20.25

**The man with
 money knows
 it pays to be
 prepared when
 opportunity
 knocks:**



If a good business chance were offered YOU to-
 day, are you in a position to grasp it? You would be
 if you had BANKED the money you spent on things
 you really didn't need.

Begin NOW. Open an account in our bank. Pile
 up your dollars and it won't be long before your
 opportunity will come AGAIN.

Are You Getting Your Share of Our "Melon"

Twice a year--January 1st and July 1st we "cut
 a melon," and every dollar in our savings department
 gets a part of it.

Are you in? If not, get in now and share in the
 next distribution.

Put your money in our bank.

Bank of Moberly



THE HOME COMING GOLDEN WEDDING, HIGH NOON, WEDNESDAY, SEPTEMBER 27TH, 1916.
Left to Right:—John E. Lynch, Best Man; Rev. C. N. Broadhurst, Minister; Enoch G. Deskin, the Groom;
Mrs. Mary McKinsey Deskin, the Bride; Mrs. Mary Hall Lynch, the Bridesmaid.