

April 2017

METU Studies in Development

Report of the Editor - 2017

General Situation

METU Studies in Development is the academic periodical of the Middle East Technical University (METU) Faculty of Economics and Administrative Sciences (FEAS). It publishes articles in the fields of economics, administrative sciences, public administration and international relations. Board of Editors consists of faculty members and academicians from several universities in Turkey. The submissions are dispersed to members of Board of Editors according to their fields to assign reviewers.

METU Studies in Development was published as four issues per year between 1970 and 1999. Between 2000 and 2002, double issues have been published. It was published semi-annually beginning in 2003. Due to increase in the number of articles that are submitted to the journal, it is being published in April, August and December since 2010.

In 2017, Vol. 44 No.1, consisted of five articles, one book review and the report of editor (128 pages); Vol. 44 No. 2, consisted of five articles and one book review (131 pages); and Vol. 44 No. 3, consisted of four articles and one book review (117 pages). The number of authors who contributed to Vol. 44's first, second and third issues were nine, eight and seven, respectively.

The website of the journal (<http://www2.feas.metu.edu.tr/metusd/ojs/index.php/metusd/index>) in its new form became operational in September 2006. From January 2008 onwards, all submission and evaluation processes became online only.

Printing and mailing costs of the journal are covered from the faculty budget. The issues are printed at the METU Printing House. This arrangement allows the journal fulfil its long-standing public service mission of nearly fifty years as a well-regarded and respected venue of academic discourse.

The journal is distributed free of charge to FEAS members and to libraries of public universities and some public institutions. The journal has a small number of domestic and foreign paid subscribers. Ninety issues are sent to METU Library, which in turn sends these to those universities and institutions that publish their own periodicals, in exchange. The journal thus amply pays back its production subsidy to the university.

Statistics

The journal requires free registration to access its online content. The number of people that subscribe to the journal's website in 2017 was 224. The number of total subscribers was 3864 in 2017. Entire online archive of METUSD is open to public. Selected articles from earlier years will be added in due course.

Table 1
Statistics on Website

| | 2011 | 2012 | 2013 | 2014* | 2015* | 2016 | 2017 |
|------------------------|--------|--------|--------|--------|--------|--------|--------|
| Unique Visitor | 4,200 | 7,923 | 7,261 | 5,706 | 3,751 | 5,049 | 5,337 |
| Number of Visits | 5,653 | 11,159 | 10,923 | 8,755 | 6,155 | 8,388 | 8,696 |
| Page view | 28,540 | 57,899 | 62,705 | 47,026 | 56,277 | 92,110 | 94,296 |
| View per Visitor | 5.05 | 5.19 | 5.74 | 5.5 | 10.77 | 10.98 | 10,84 |
| Returning Visitors (%) | 27 | 30 | 34.72 | 33.65 | 40.2 | 41.4 | 41.9 |

*Notes: 2014 covers the period between January and October; 2015 covers the period between April and December.

During 2017, the number of unique visitors was 5337 and the number of visits was 8696. These figures and others from Table 1 show that compared to the 2011-2017 period, although view per visitors declined, the other items increased in 2017.

Table 2
Visitors by Countries and Territories (2017)

| Country/Territory | Number of Visits | Share (%) | New Visits (%) |
|-------------------|------------------|-----------|----------------|
| Turkey | 7,239 | 83.25 | 56,34 |
| United States | 429 | 4.93 | 92,54 |
| Indonesia | 101 | 1.16 | 73,27 |
| United Kingdom | 95 | 1.09 | 76,79 |
| Germany | 95 | 1.09 | 78,95 |
| Palestine | 61 | 0.70 | 13,11 |
| Cyprus | 59 | 0.68 | 66,10 |
| India | 38 | 0.44 | 77,55 |
| Vietnam | 34 | 0.39 | 61,76 |
| Other | 545 | 6.27 | 80,91 |

¹ Statistics cover the period of January-December, except 2014 and 2015. Because of server upgrade operations in October 2014, statistics on website for 2014 covers January – October and for 2015 covers April - December. The technical problem was solved in March 2015.

About 17% of the total visitors came from outside of Turkey in 2017. The US leads with 429 visits; the Indonesia follows with 101 visits and Germany and UK with 95 visits for 2017. Most (approximately 80%) foreign users were first time users in 2017.

METU Studies in Development received 40 manuscripts and 3 book reviews in 2017.

Table 3
Distribution of Submissions by Fields (2011 – 2017)

| Fields | 2012 | | 2013 | | 2014 | | 2015 | | 2016 | | 2017 | | Total | |
|-----------------------|------|-----|------|-----|------|-----|------|-----|------|-----|------|-----|-------|-----|
| | # | % | # | % | # | % | # | % | # | % | # | % | # | % |
| Economics | 22 | 45 | 35 | 52 | 21 | 36 | 29 | 59 | 25 | 53 | 26 | 60 | 158 | 50 |
| Business Adm. | 9 | 18 | 13 | 19 | 16 | 28 | 12 | 24 | 11 | 23 | 6 | 14 | 67 | 21 |
| International Rel. | 1 | 8 | 2 | 3 | 11 | 19 | 2 | 4 | 1 | 2 | 1 | 2 | 18 | 6 |
| Pol. Sci. & Pub. Adm. | 4 | 2 | 10 | 15 | 8 | 14 | 4 | 8 | 6 | 13 | 8 | 19 | 40 | 13 |
| Other | 13 | 27 | 7 | 10 | 2 | 3 | 2 | 4 | 4 | 9 | 2 | 5 | 30 | 10 |
| Total | 49 | 100 | 67 | 100 | 58 | 100 | 49 | 100 | 47 | 100 | 43 | 100 | 313 | 100 |

Table 3 shows the number and proportion of submissions according to major field. Of these, 50% are in economics while 21% from business administration between 2012 and 2017, though 60% of them are in economics and 14% are in business administration in 2017.

Table 4
Average Processing Periods (Week)

| Year | Field | Editor | 1 st Referee | 2 nd Referee | To Rejection (including editorial rejections) | To decision |
|-------------------|-----------------------|--------|-------------------------|-------------------------|---|-------------|
| 2012 | Economics | 3.5 | 6.8 | 2.8 | 7.6 | 11.5 |
| | Business Adm. | 4.5 | 7.3 | 7.5 | 5.9 | 9.5 |
| | Pol. Sci. & Pub. Adm. | 3.6 | 10.1 | - | - | 24.1 |
| | International Rel. | 0 | 3.3 | 1.6 | 8 | 7.2 |
| | Other | - | - | - | 0.8 | 0.8 |
| | Total | 3.5 | 6.9 | 3.7 | 4.5 | 7.9 |
| 2013 | Economics | 2 | 6.9 | 5.5 | 5.6 | 17.1 |
| | Business Adm. | 3.7 | 5.6 | 7.6 | 6.5 | 21.3 |
| | Pol. Sci. & Pub. Adm. | 3.3 | 6.1 | 2.9 | - | 17 |
| | International Rel. | 0.1 | 14.6 | 11.9 | 0.3 | 14.8 |
| | Other | - | - | - | 2.2 | 7.1 |
| | Total | 2.6 | 6.6 | 5.5 | 14.7 | 16.4 |
| 2014 | Economics | 6.1 | 7.4 | 5.9 | 14 | 33.5 |
| | Business Adm. | 7.5 | 12.3 | 7.8 | 9.7 | 41.9 |
| | Pol. Sci. & Pub. Adm. | 2.8 | 7.4 | 2.8 | 28.8 | 30.4 |
| | International Rel. | 2.3 | 6.9 | 3.3 | - | 36.5 |
| | Other | - | - | - | 4.4 | - |
| | Total | 5 | 8 | 5 | 13.7 | 36.4 |
| 2015 | Economics | 4.9 | 7 | 4.3 | 18 | 23.9 |
| | Business Adm. | 11.3 | 7.7 | 8.5 | 33.4 | 50 |
| | Pol. Sci. & Pub. Adm. | 5.6 | - | - | - | - |
| | International Rel. | 16 | 0.0 | 0.0 | - | 26 |
| | Other | - | - | - | 7.7 | - |
| | Total | 7.2 | 6.9 | 5.3 | 23.1 | 27.4 |
| 2016 | Economics | 11.6 | 9.7 | 9.5 | 17.3 | 10.4 |
| | Business Adm. | 7.5 | 8.3 | 8.3 | 14.2 | 44.6 |
| | Pol. Sci. & Pub. Adm. | 3.9 | 5.6 | 2.4 | 4.7 | 30.3 |
| | International Rel. | 15.5 | 8.5 | 11.8 | - | 35.8 |
| | Other | - | - | - | 5.3 | - |
| | Total | 9.3 | 6.9 | 5.3 | 23.1 | 27.5 |
| 2017 ^a | Economics | 5.6 | 15.8 | 8.0 | 7.8 | 10.8 |
| | Business Adm. | 4.1 | 4.3 | 9.0 | 14.5 | 24.9 |
| | Pol. Sci. & Pub. Adm. | 4.5 | 12.3 | 13.0 | 16.0 | 36.5 |
| | International Rel. | 8.0 | 32.0 | - | 12.0 | 56.0 |
| | Other | - | - | - | 5.5 | - |
| | Total | 5.6 | 16.1 | 10.0 | 12.6 | 32.1 |

a: As of 31.12.2017

In Table 4, compilation periods of articles in different steps are shown between 2012 and 2017. It is seen although that a referee was found on average in 5.6 weeks in 2017. Authors have been notified on the editorial decision on average in 32.1 weeks in 2017. For 40 articles submitted in 2017, as 13 of them were rejected (two desk rejections, 11 after peer review). Five manuscripts were published, six manuscripts were under review, and five manuscripts were under revision.

Table 5
Refereeing Status of the Articles

| | 2010 | 2011 | 2012 | 2013 | 2014 | 2015 | 2016 | 2017 |
|---------------------------|------|------|------|------|------|------|------|------|
| Single Referee | 13 | 8 | 4 | 12 | 14 | 8 | 11 | 14 |
| Two+ Referees | 27 | 28 | 14 | 34 | 31 | 36 | 20 | 13 |
| No referee found | 2 | - | - | 5 | - | 1 | - | - |
| Desk Rejection by Editors | 6 | 18 | 31 | 16 | 13 | 4 | 10 | 13 |
| Recall by Authors | 2 | 2 | - | - | - | - | 5 | - |
| Total | 50 | 56 | 49 | 67 | 58 | 49 | 46 | 40 |

Table 5 shows detailed statistics of the refereeing process between the years 2010-2017. During this period, a significant portion of the articles has been assigned to two referees, except for some manuscripts received in 2017. The journal always starts by two or three referees but sometimes (due to a lack of response) the decision is made based on a single referee report (who is an experienced and trusted referee) and editorial evaluation. If the editorial board is in doubt, the author is informed and asked for permission to start the process anew if the author so wishes it (or recalls his/her submission).

The statistics for *METU Studies in Development* for the period of 2002 – 2017 are shown in Table 6. In this period, 44% of issued articles were written in Turkish and 89% of the authors were academicians or professionals that affiliated to universities or other institutions in Turkey. *METU Studies in Development* is an important publication source for foreign researches as well as Turkish counterparts. In fact, *METU Studies in Development* is appraised in the category of national A group journal for the majority of state and foundations' universities in Turkey in the process of promotion and assignment for an academic position (see The Annual Report of 2004). The journal is also appraised in the category of international B group journals in the process of promotion and assignment for an academic position by METU. A *METU Studies in Development* publication qualifies for an initial assistant professor position in the overwhelming majority of Turkish universities. Since 1971, the journal has been included by the Econlit index, which is a leading international citation index of American Economic Association in the field of economics.

Table 6
Summary statistics for METU Studies in Development, 2001-2015

| Volume | Number | Number of Articles ^a | Number of Articles in Turkish | Total Number of Authors | Number of Authors (from Turkey) ^b | Number of Authors (Foreign Affiliation) | Number of Book Reviews | Printing Date ^c | Special Issue |
|-----------------|-----------|---------------------------------|-------------------------------|-------------------------|--|---|------------------------|----------------------------|---------------|
| 29 | 2002(1-2) | 9 | 4 | 14 | 13 | 1 | 3 | 2003 | |
| 29 | 2002(3-4) | 7 | 2 | 11 | 8 | 3 | 3 | 2003 | |
| 30 ^d | 2003(1) | 5 | 0 | 8 | 6 | 2 | 5 | Apr.04 | |
| 30 | 2003(2) | 5 | 2 | 5 | 5 | 0 | 0 | Oct.04 | |
| 31 | 2004(1) | 5 | 3 | 9 | 8 | 1 | 0 | Dec.04 | |
| 31 | 2004(2) | 5 | 2 | 8 | 7 | 1 | 0 | Jan.05 | |
| 32 | 2005(1) | 8 | 3 | 10 | 9 | 1 | 1 | Jul.05 | |
| 32 | 2005(2) | 12 | 0 | 23 | 21 | 2 | 0 | Jan.06 | * |
| 33 | 2006(1) | 6 | 4 | 7 | 6 | 1 | 1 | Jun.06 | |
| 33 | 2006(2) | 6 | 1 | 10 | 10 | 0 | 0 | Dec.06 | |
| 34 | 2007(1) | 5 | 3 | 7 | 7 | 0 | 0 | Jun.07 | |
| 34 | 2007(2) | 11 | 4 | 11 | 11 | 0 | 0 | Dec.07 | * |
| 35 | 2008(1) | 10 | 1 | 12 | 1 | 11 | 0 | Jun.08 | * |
| 35 | 2008(2) | 10 | 2 | 20 | 18 | 2 | 0 | Dec.08 | |
| 35 | 2008(2) | 11 | 8 | 22 | 21 | 1 | 1 | Apr.09 | * |
| 36 | 2009(1) | 10 | 6 | 17 | 9 | 8 | 0 | June.09 | |
| 36 | 2009(2) | 7 | 3 | 13 | 13 | 0 | 1 | Dec.09 | |
| 37 | 2010(1) | 4 | 2 | 8 | 8 | 0 | 0 | Apr. 10 | |
| 37 | 2010(2) | 4 | 2 | 10 | 10 | 0 | 0 | Aug.10 | |
| 37 | 2010(3) | 4 | 1 | 8 | 8 | 0 | 1 | Dec.10 | |
| 38 | 2011(1) | 4 | 3 | 8 | 8 | 0 | 0 | Apr. 11 | |
| 38 | 2011(2) | 4 | 3 | 6 | 6 | 0 | 0 | Aug.11 | |
| 38 | 2011(3) | 4 | 3 | 5 | 5 | 0 | 0 | Dec.11 | |
| 39 | 2012(1) | 5 | 4 | 6 | 6 | 0 | 0 | Apr. 12 | |
| 39 | 2012(2) | 4 | 3 | 7 | 7 | 0 | 0 | Aug.12 | |
| 39 | 2012(3) | 3 | 1 | 5 | 5 | 0 | 1 | Dec.12 | |
| 40 | 2013(1) | 5 | 2 | 8 | 8 | 0 | 0 | Apr. 13 | |
| 40 | 2013(2) | 12 | 12 | 15 | 15 | 0 | 0 | Aug. 13 | * |
| 40 | 2013(3) | 4 | 1 | 8 | 8 | 0 | 0 | Dec. 13 | |
| 41 | 2014(1) | 4 | 3 | 6 | 6 | 0 | 0 | Apr. 14 | |
| 41 | 2014(2) | 9 | 6 | 15 | 15 | 0 | 1 | Aug. 14 | |
| 41 | 2014(3) | 11 | 0 | 11 | 7 | 4 | 0 | Dec. 14 | * |

METU STUDIES IN DEVELOPMENT

| | | | | | | | | |
|-------|---------|-----|-----|-----|-----|----|----|-----------|
| 42 | 2015(1) | 5 | 3 | 10 | 10 | 0 | 0 | Apr. 15 |
| 42 | 2015(2) | 6 | 2 | 7 | 5 | 2 | 1 | Aug. 15 |
| 42 | 2015(2) | 7 | 4 | 13 | 13 | 0 | 1 | Dec. 15 |
| 43 | 2016(1) | 15 | 5 | 29 | 27 | 2 | 0 | Apr. 16 * |
| 43 | 2016(2) | 9 | 3 | 17 | 15 | 2 | 1 | Aug. 16 |
| 43 | 2016(3) | 5 | 4 | 7 | 7 | 0 | 0 | Dec. 16 |
| 44 | 2017(1) | 5 | 3 | 8 | 8 | 0 | 1 | Apr. 17 |
| 44 | 2017(2) | 5 | 2 | 7 | 7 | 0 | 1 | Aug. 17 |
| 44 | 2017(3) | 4 | 1 | 6 | 4 | 2 | 1 | Dec. 17 |
| Total | | 274 | 121 | 437 | 391 | 46 | 24 | |

a Shorter Papers / Notes / In Memoriam are included.

b The authors that are affiliated with institutions from Turkish Republic and Turkish Republic of Northern Cyprus.

c The publication date is noted the inside cover page since Vol. 26.

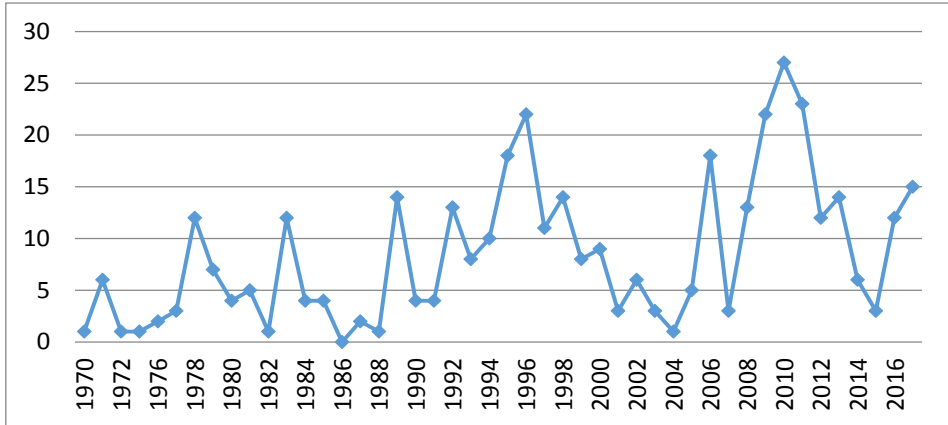
d In Vol. 30, publication period was changed to two issues per year (in June and December).

Citations of *METU Studies in Development* in the SSCI

The journal was published for more than 45 years through the dedicated efforts of a small staff and limited resources of the METU FEAS. In the past, publication on time was an issue. The journal has been back on timely publication track for the past twelve years and it has international visibility statistics compiled within an online system for the past six years. In addition, the full text of past volumes (back to 2000) was transferred to the web environment in pdf format. Until recently, the journal could be found only at the central libraries of public universities. The EBSCOHost Academic Search Premier database provides full text access.

METU Studies in Development has been cited in the SSCI index for the first time in 1970. The journal has been cited 398 times in studies that have been published in the journals indexed by SSCI between 1970 and 2017. An increase in the number of citations has been observed over time, though it is declined to 6 in 2014 and 3 in 2015. Nonetheless, it is increased to 12 in 2016 and 15 in 2017. The journal was cited most in 2010 by 27 citations.

Figure 1
Number of Citations by Year



The classification of the citations by fields is given in Table 7. A large part of the citations comes from the articles in the field of economics.

Table 7
Classification of Citations by Fields

| Field | Citations | |
|-----------------------|-----------|------------|
| | Number | Percentage |
| Economics | 194 | 48.7 |
| Business Adm. | 53 | 13.3 |
| Pol. Sci. & Pub. Adm. | 66 | 16.6 |
| International Rel. | 22 | 5.5 |
| Others | 63 | 15.8 |
| Total | 398 | 100.0 |

Table 8 shows the distribution of citations to the journal by country. The majority of the citations were made by the Turkish researchers (53.5%). Turkish researchers are followed by the journals from the U.S.A. and the U.K. The share of citations by foreign researchers increased to 45% in 2014 from 28% in 2008 and 33% in 2009.

Table 8
Distribution of Citations by Country

| Country | Number | Percentage |
|---------------------------|--------|------------|
| Turkey | 213 | 53.5 |
| U.S.A. | 52 | 13.1 |
| U.K. | 22 | 5.5 |
| Netherland | 7 | 1.8 |
| Germany | 5 | 1.3 |
| Canada | 4 | 1.0 |
| Taiwan | 3 | 0.8 |
| Jordan | 3 | 0.8 |
| France | 3 | 0.8 |
| Peoples Republic of China | 3 | 0.8 |

Table 9 shows the distribution by institution of the authors who cited article from METU Studies in Development. A significant proportion of the citations (21.7%) were made from METU and Bilkent University authors who have had a long-standing familiarity with the journal.

Table 9
Distribution of Studies that Cite METU SD by Institution

| The institution | Number | Percentage |
|----------------------------------|--------|------------|
| METU | 54 | 13.3 |
| Bilkent University | 34 | 8.4 |
| Boğaziçi University | 22 | 5.4 |
| İstanbul Technical University | 13 | 3.2 |
| Ankara University | 11 | 2.7 |
| Hacettepe University | 9 | 2.2 |
| Ege University | 6 | 1.5 |
| Koç University | 5 | 1.2 |
| Sabancı University | 4 | 1.0 |
| Turkish Republic of Central Bank | 4 | 1.0 |
| Marmara University | 4 | 1.0 |
| University of Minnesota | 4 | 1.0 |
| Yeditepe University | 4 | 1.0 |

Journals that cited METU Studies in Development most are given in Table 10. Most of the citations to the journal were from “Emerging Markets Finance, Trade”, and “Applied Economics”.

Table 10
Distribution of Studies that Cite METU SD by Journal

| Name of the Journal | Number | Percentage |
|--|--------|------------|
| Emerging Markets Finance and Trade | 12 | 3.0 |
| Applied Economics | 12 | 3.0 |
| Developing Economies | 8 | 2.0 |
| Journal of Policy Modeling | 7 | 1.8 |
| Middle Eastern Studies | 7 | 1.8 |
| İktisat Isletme ve Finans | 7 | 1.8 |
| International Journal of Middle East Studies | 6 | 1.5 |
| World Development | 6 | 1.5 |
| Amme İdaresi Dergisi | 6 | 1.5 |
| Economic Modelling | 5 | 1.3 |
| Applied Economics Letters | 5 | 1.3 |
| Journal of Development Studies | 5 | 1.3 |
| Development and Change | 4 | 1.0 |
| European Journal of Operational Research | 4 | 1.0 |
| Canadian Journal of Development Studies | 4 | 1.0 |

METU Studies in Development is committed to remain the most respected academic journal in its niche in Turkey, continuing to fulfill its mission as it has done for the past forty-seven years.