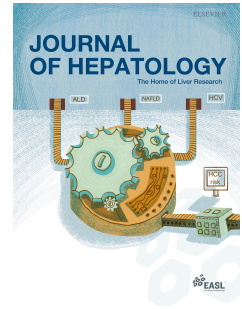


Journal Pre-proof



Non-invasive stratification of hepatocellular carcinoma risk in non-alcoholic fatty liver using polygenic risk scores

Cristiana Bianco, Oveis Jamialahmadi, Serena Pelusi, Guido Baselli, Paola Dongiovanni, Irene Zanoni, Luigi Santoro, Silvia Maier, Antonio Liguori, Marica Meroni, Vittorio Borroni, Roberta D'Ambrosio, Rocco Spagnuolo, Anna Alisi, Alessandro Federico, Elisabetta Bugianesi, Salvatore Petta, Luca Miele, Umberto Vespasiani-Gentilucci, Quentin M. Anstee, Felix Stickel, Jochen Hampe, Janett Fischer, Thomas Berg, Anna Ludovica Fracanzani, Giorgio Soardo, Helen Reeves, Daniele Prati, Stefano Romeo, Luca Valenti

PII: S0168-8278(20)33811-3

DOI: <https://doi.org/10.1016/j.jhep.2020.11.024>

Reference: JHEPAT 8030

To appear in: *Journal of Hepatology*

Received Date: 29 June 2020

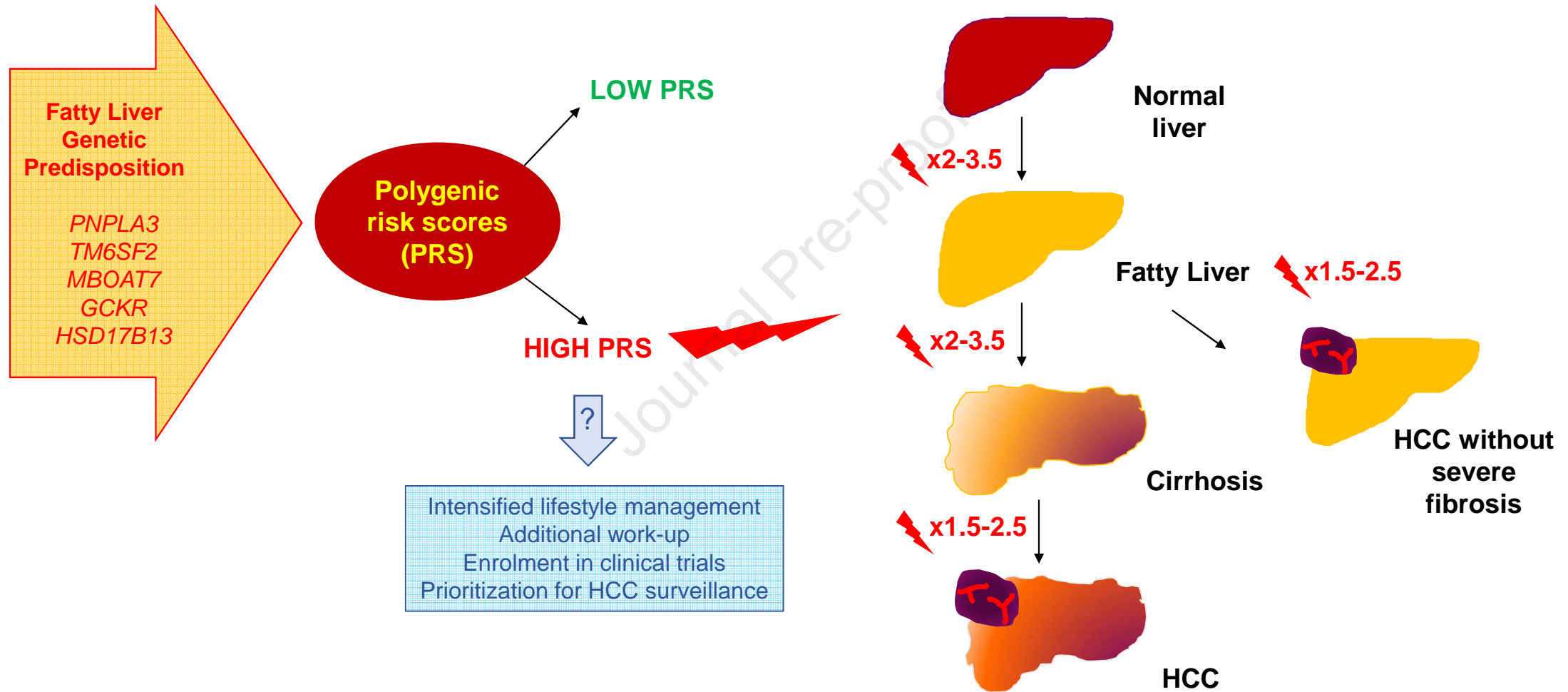
Revised Date: 11 November 2020

Accepted Date: 16 November 2020

Please cite this article as: Bianco C, Jamialahmadi O, Pelusi S, Baselli G, Dongiovanni P, Zanoni I, Santoro L, Maier S, Liguori A, Meroni M, Borroni V, D'Ambrosio R, Spagnuolo R, Alisi A, Federico A, Bugianesi E, Petta S, Miele L, Vespasiani-Gentilucci U, Anstee QM, Stickel F, Hampe J, Fischer J, Berg T, Fracanzani AL, Soardo G, Reeves H, Prati D, Romeo S, Valenti L, Non-invasive stratification of hepatocellular carcinoma risk in non-alcoholic fatty liver using polygenic risk scores, *Journal of Hepatology* (2020), doi: <https://doi.org/10.1016/j.jhep.2020.11.024>.

This is a PDF file of an article that has undergone enhancements after acceptance, such as the addition of a cover page and metadata, and formatting for readability, but it is not yet the definitive version of record. This version will undergo additional copyediting, typesetting and review before it is published in its final form, but we are providing this version to give early visibility of the article. Please note that, during the production process, errors may be discovered which could affect the content, and all legal disclaimers that apply to the journal pertain.

Individuals with Dysmetabolism or NAFLD:



Non-invasive stratification of hepatocellular carcinoma risk in non-alcoholic fatty liver using polygenic risk scores

Cristiana Bianco^{1,†}, Oveis Jamialahmadi^{2,†}, Serena Pelusi^{1,3,†}, Guido Baselli¹, Paola Dongiovanni⁴, Irene Zanoni¹, Luigi Santoro¹, Silvia Maier⁵, Antonio Liguori⁶, Marica Meroni⁴, Vittorio Borroni⁷, Roberta D'Ambrosio⁸, Rocco Spagnuolo², Anna Alisi⁹, Alessandro Federico¹⁰, Elisabetta Bugianesi¹¹, Salvatore Petta¹², Luca Miele⁶, Umberto Vespasiani-Gentilucci¹³, Quentin M Anstee¹⁴, Felix Stickel¹⁵, Jochen Hampe¹⁶, Janett Fischer¹⁷, Thomas Berg¹⁷, Anna Ludovica Fracanzani^{3,4}, Giorgio Soardo^{5,18}, Helen Reeves¹⁴, Daniele Prati¹, Stefano Romeo^{2,19,*}, Luca Valenti^{1,3,*}.

¹Translational Medicine – Department of Transfusion Medicine and Hematology, Fondazione IRCCS Ca' Granda Ospedale Maggiore Policlinico, Milan, Italy;

²Department of Clinical and Molecular Medicine, University of Gothenburg, Gothenburg, Sahlgrenska University Hospital, Gothenburg, Sweden;

³Department of Pathophysiology and Transplantation, Università degli Studi di Milano, Milan, Italy;

⁴ General Medicine and Metabolic Diseases, Fondazione IRCCS Ca' Granda Ospedale Maggiore Policlinico, Milan, Italy;

⁵Clinic of Internal Medicine – Liver Unit, Department of Medical Area (DAME), Università degli Studi di Udine, Udine, Italy;

⁶Department of Internal Medicine, Fondazione Policlinico A. Gemelli, Università Cattolica di Roma, Rome, Italy;

⁷Unit of Medicine, ASST Valle Olona, Ospedale di Gallarate, Varese, Italy;

⁸Division of Gastroenterology and Hepatology, CRC “A.M. and A. Migliavacca” Center for Liver Disease, Fondazione IRCCS Ca' Granda Ospedale Maggiore Policlinico, Milan, Italy;

⁹Research Unit of Molecular Genetics of Complex Phenotypes, IRCCS Ospedale Bambino Gesù, Rome, Italy;

¹⁰Division of Hepatogastroenterology, Department of Precision Medicine, Università della Campania “Luigi Vanvitelli”, Naples, Italy;

¹¹Department of Medical Sciences, Division of Gastro-Hepatology, A.O. Città della Salute e della Scienza di Torino, Università di Torino, Turin, Italy;

¹²Gastroenterology and Hepatology, PROMISE, Università di Palermo, Palermo, Italy;

¹³Department of Hepatology, University Campus Bio-Medico di Roma, Rome, Italy;

¹⁴Translational and Clinical Research Institute, Faculty of Medical Sciences, Newcastle University, Newcastle upon Tyne, UK; & Newcastle NIHR Biomedical Research Centre, Newcastle upon Tyne Hospitals NHS Foundation Trust, Newcastle upon Tyne, UK;

¹⁵Department of Gastroenterology and Hepatology, University Hospital of Zürich, Switzerland;

¹⁶Medical Department 1, University Hospital Dresden, TU Dresden, Germany;

¹⁷Division of Hepatology, Department of Medicine II, Leipzig University Medical Center, Laboratory for Clinical and Experimental Hepatology, Leipzig, Germany;

¹⁸Italian Liver Foundation, Area Science Park, Basovizza Campus, Trieste, Italy;

¹⁹Clinical Nutrition Unit, Department of Medical and Surgical Science, University Magna Graecia, Catanzaro, Italy.

† Contributed equally.

* Corresponding authors.

Corresponce address:

Luca Valenti, MD

Address: Department of Pathophysiology and Transplantation, Università degli Studi di Milano, Fondazione IRCCS Ca' Granda Ospedale Maggiore Policlinico,

Translational Medicine - Department of Transfusion Medicine and Hematology, Fondazione IRCCS Ca' Granda Ospedale Maggiore Policlinico, via F Sforza 35, 20122, Milan, Italy.

Tel: +390250320278; Fax: +390250320296; E-mail: luca.valenti@unimi.it

Stefano Romeo, MD, PhD

Wallenberg Laboratory, Department of Molecular and Clinical Medicine, University of Gothenburg, Bruna Stråket 16, SE-413 45 Göteborg, Sweden

Tel: +46 (0)313426735; E-mail: stefano.romeo@wlab.gu.se

Keywords: biomarker; cirrhosis; genetics; hepatic fat; non-alcoholic fatty liver disease.

Word count: 5,427; **Abstract:** 275; **Tables:** 3; **Figures:** 4.

Financial support: This work was supported by project grants from Amgen and Sanofi-Aventis, the Swedish Research Council [Vetenskapsrådet (VR), 2016-01527], the Swedish state under the agreement between the Swedish government and the county councils (the ALF-agreement) [SU 2018-04276], the Novo Nordisk Foundation Grant for Excellence in Endocrinology [Excellence Project, 9321-430], the Swedish Diabetes Foundation [DIA 2017-205], the Swedish Heart Lung Foundation [20120533], the Wallenberg Academy Fellows from the Knut and Alice Wallenberg Foundation [KAW 2017.0203] (SR); MyFirst Grant AIRC n.16888, Ricerca Finalizzata Ministero della Salute RF-2016-02364358, Ricerca corrente Fondazione IRCCS Ca' Granda Ospedale Maggiore Policlinico, the European Union (EU) Programme Horizon 2020 (under grant agreement No. 777377) for the project LITMUS- "Liver Investigation: Testing Marker Utility in Steatohepatitis", Fondazione IRCCS Ca' Granda "Liver BIBLE" PR-0391, Fondazione IRCCS Ca' Granda core COVID-19 Biobank (RC100017A) to LV; European Community's Seventh Framework Programme (FP7/2001-2013) under grant agreement HEALTH-F2-2009-241762 for the project FLIP. Cancer Research UK (CR UK) centre grant C9380/A18084; programme grant C18342/A23390 and Accelerator award C9380/A26813 to HR. The Swiss National Funds (SNF no. 310030_169196) and the Swiss Foundation for Alcohol Research (SSA) to FS.

Conflict of interest: The authors declare that they have no conflict of interest relevant to the present study.

SR has served as a consultant for AstraZeneca, Celgene, Sanofi, Amgen, Akcea Therapeutics, Camp4, AMbys, Medacorp and Pfizer in the past 5 years, and received research grants from AstraZeneca, Sanofi and Amgen.

LV has received speaking fees from MSD, Gilead, AlfaSigma and AbbVie, served as a consultant for Gilead, Pfizer, Astra Zeneca, Novo Nordisk, Intercept, Diatech Pharmacogenetics and Ionis Pharmaceuticals, and received research grants from Gilead.

Authors' contributions: LV, SR, SP: study supervision, funding, concept and design, data interpretation; CB, OJ, LV: data analysis; CB, SP, SM, AL, FS, GH, JF, TB, HR, DP, LM, UVG, ALF, QMA: data collection; CB, LV: manuscript drafting; PD, GB, IZ, LS: samples processing and genotyping; VB, RDA, AA, AF, EB, SP.

Data availability: The data that support the study findings are available upon reasonable request from the corresponding authors [LV, SR]. The full data are not publicly available due to limitations posed by the informed consent and ethical regulations at some of the participating centres.

Abstract

Background & Aims: Hepatocellular carcinoma (HCC) risk stratification in individuals with dysmetabolism is a major unmet need. Genetic predisposition contributes to non-alcoholic fatty liver disease (NAFLD). We aimed to exploit robust polygenic risk scores (PRS) that can be evaluated in the clinic to gain insight into the causal relationship between NAFLD and HCC, and to improve HCC risk stratification.

Methods: We examined at-risk individuals (NAFLD cohort, n=2,566; 226 with HCC; and a replication cohort of 427 German patients with NAFLD) and the general population (UK Biobank [UKBB] cohort, n=364,048; 202 with HCC). Variants in *PNPLA3-TM6SF2-GCKR-MBOAT7* were combined in a hepatic fat PRS (PRS-HFC), and then adjusted for *HSD17B13* (PRS-5).

Results: In the NAFLD cohort, the adjusted impact of genetic risk variants on HCC was proportional to the predisposition to fatty liver ($p=0.002$) with some heterogeneity in the effect. PRS predicted HCC more robustly than single variants ($p<10^{-13}$). The association between PRS and HCC was mainly mediated through severe fibrosis, but was independent of fibrosis in clinically relevant subgroups, and was also observed in those without severe fibrosis ($p<0.05$). In the UKBB cohort, PRS predicted HCC independently of classical risk factors and cirrhosis ($p<10^{-7}$). In the NAFLD cohort, we identified high PRS cut-offs ($\geq 0.532/0.495$ for PRS-HFC/PRS-5) that in the UKBB cohort detected HCC with ~90% specificity but limited sensitivity; PRS predicted HCC both in individuals with ($p<10^{-5}$) and without cirrhosis ($p<0.05$).

Conclusions: Our results are consistent with a causal relationship between hepatic fat and HCC. PRS improved the accuracy to detect HCC and may help stratify HCC risk in individuals with dysmetabolism, including those without severe liver fibrosis. Further studies are needed to validate our findings.

Lay summary: By using variations in genes that affect fatty liver, we used two risk scores to help predict liver cancer in individuals with obesity-related metabolic complications. These risk scores can

be easily tested in the clinic. We showed that the risk scores helped to identify risk of liver cancer both in high-risk individuals and in the general population.

Journal Pre-proof

Introduction

Hepatocellular carcinoma (HCC) is now the third cause of cancer-related mortality worldwide.^{1,2} The prevalence of non-alcoholic fatty liver disease (NAFLD; also known as metabolic dysfunction-associated fatty liver disease when associated with dysmetabolism)³ has increased in parallel with the growing burden of obesity and type 2 diabetes (T2D) to become a leading cause of HCC.⁴⁻⁷ About 21-33% of the general population is affected by NAFLD, and the proportion of subjects progressing to severe liver fibrosis and HCC is projected to increase in the near future.⁸ Current guidelines advise that HCC surveillance is recommended in patients with NAFLD and cirrhosis, and should be considered in those with advanced liver fibrosis.⁹ However, no reliable biomarker is yet available to stratify HCC risk in patients without severe fibrosis, accounting for a large fraction of HCC cases in individuals with dysmetabolism.^{9,10} The high prevalence of NAFLD and the evidence that HCC frequently arises in individuals unaware of their risk make classical HCC surveillance strategies impractical, resulting in delayed diagnosis and unfavourable prognosis.¹¹ Thus, non-invasive biomarkers to identify patients at risk of NAFLD-related HCC onset are urgently needed.

Hepatic fat content has a strong inherited component.¹² Variants in genes involved in the regulation of hepatic lipid metabolism, such as in patatin-like phospholipase domain-containing protein 3 (*PNPLA3*), transmembrane 6 superfamily member 2 (*TM6SF2*), membrane bound O-acyltransferase domain containing 7 (*MBOAT7*) and glucokinase regulator (*GCKR*), predispose to NAFLD, hepatic fibrosis, and HCC in the presence of environmental triggers.¹²⁻¹⁶ Conversely, a splice variant in 17 β -hydroxysteroid dehydrogenase type 13 (*HSD17B13*) prevents severe fibrosis and HCC development.¹⁷ We previously developed a robust polygenic risk score (PRS) of hepatic fat content (termed PRS-HFC) and showed that the impact of genetic risk variants on fibrosis is proportional to that on hepatic fat, consistent with hepatic fat accumulation being a driver of liver disease.¹⁸ Recently, Stender et al. confirmed that an unweighted PRS based on *PNPLA3-TM6SF2-HSD17B13* predicted cirrhosis and HCC in Europeans.¹⁹

Here we hypothesized that liver fat promotes HCC in individuals with NAFLD and dysmetabolism. Mendelian randomization is considered the most appropriate epidemiological tool to assess causality when randomized controlled trials are not feasible. Therefore, we examined the impact of the previously developed PRS-HFC based on well-characterized risk variants that can be evaluated in the clinic on HCC in at-risk individuals and in the general population. We also performed a further adjustment for *HSD17B13* (termed PRS-5). Next, we identified PRS thresholds able to identify with good specificity a subset of individuals with NAFLD and dysmetabolism at high risk for HCC. Finally, we showed that PRS predicted HCC irrespective of severe liver fibrosis.

Patients and methods

Study cohorts

The NAFLD case-control cross-sectional cohort included 1,699 unrelated subjects with NAFLD of European ancestry, who were evaluated from 2008 until 2019 at Italian and UK centres for suspected liver disease (from simple steatosis to severe fibrosis and HCC), or who underwent liver biopsy during bariatric surgery. Liver damage was assessed by histology, except when clear clinical or radiological signs of cirrhosis were detected (n=342, 20.1%). Part of this cohort has previously been described.^{14,15,20,21} NAFLD,³ severe fibrosis,²² HCC,²³ and selection of 865 controls^{24,25} were defined as reported in Supplementary Methods. We also considered an independent NAFLD validation cohort of 427 German individuals. The demographic and clinical data of these individuals are shown in Table S1.

The study protocol conformed to the ethical guidelines of the 1975 Declaration of Helsinki, approved by the Fondazione IRCCS Ca' Granda, and ratified by the participating centres. Informed written consent was obtained from each participant.

The UK Biobank (UKBB) has data (including baseline assessment, physical measures, biological samples, and genetic data) from >500,000 individuals recruited between 2006 and 2010 and aged 40-69 years²⁶ (ukbiobank.ac.uk). During follow-up, information about health-related outcomes have been collected from national datasets. Data used in this study were obtained from the UKBB under Application Number 37142. Selection criteria and HCC and diabetes definitions are reported in Supplementary Methods.²⁷ Subsequently, individuals with concomitant viral hepatitis (ICD-10 code B15-B19) were excluded (n=535, 0.15%) for a sensitivity analysis presented in Supplementary Results. This left us with 364,048 individuals. Clinical features are shown in Table S1 and Table S2.

Genotyping

Study participants were genotyped for rs738409 (*PNPLA3* I148M variant), rs58542926 (*TM6SF2* E167K), rs641738 C>T *MBOAT7*, rs1260326 (*GCKR* P446L) and rs72613567 (*HSD17B13*:TA),¹² as specified in Supplementary Methods.

Statistical analysis

For descriptive statistics, categorical variables are shown as number and proportion. Continuous variables are shown as mean and standard deviation (SD) or median and interquartile range (IQR), as appropriate.

Observational associations were performed by fitting data to generalized linear models. Logistic regression models were fit to examine binary traits, and the association between PRS and liver disease was adjusted for age, sex, body mass index (BMI) and T2D, with or without further adjustment for the presence of severe fibrosis stage (F3-F4).

To estimate the causal relationship between genetically determined predisposition to accumulate liver fat and HCC, we used the most established risk variants for hepatic fat content as instruments in a Mendelian randomization analysis, as reported in Supplementary Methods.^{12,18,28} We used the PRS-HFC, a robust genetic instrument calculated by summing the number of the steatosis-predisposing alleles in *PNPLA3-TM6SF2-MBOAT7-GCKR* weighted by their effect size on hepatic fat content, quantified by the reference standard in the general population.¹⁸ We next developed a modified NAFLD score adjusted for the rs72613567 *HSD17B13* variant¹⁷ (PRS-5: available in 2,532, 98.7%, coefficient: -0.361). We reported the association of both instruments with phenotypes throughout the study, as PRS-HFC is a proxy for genetic predisposition to accumulate liver fat, while PRS-5 considers all variants robustly associated with NAFLD at the time of study planning.¹²

The causal effect of genetic predisposition to NAFLD on HCC was estimated by instrumental variable regression analysis (using the AER package in R), with NAFLD as an explanatory variable,

and HCC as the outcome.²⁹ To further account for the possible pleiotropy of the genetic variants considered, we also considered, in sensitivity analyses, robust Mendelian randomization approaches by the MendelianRandomization R package.³⁰

The main goal was to determine the thresholds in the PRS able to identify individuals at higher genetic risk of HCC. Diagnostic accuracy of PRS was evaluated by receiver operating characteristic (ROC) curves, and the best cut-off identified as the point with maximum (sensitivity+specificity-1).

Statistical analysis was carried out using the JMP Pro 14.0 Statistical Analysis Software (SAS Institute, Cary, NC), and R statistical analysis software version 3.5.2 (<http://www.R-project.org/>). *P* values <0.05 (two tailed) were considered significant.

Results

Causal relationship between hepatic fat and HCC in the NAFLD cohort

We first examined the relationship between the impact of genetic risk variants on NAFLD, severe liver fibrosis and HCC (Fig. 1). The increase in the risk of HCC conferred by risk variants was proportional to the increase in the risk of NAFLD ($p=0.02$). There was a direct relationship between the risk conferred to FLD and severe fibrosis ($p=0.0001$), and between severe fibrosis and HCC ($p=0.002$).

Instrumental variable regression adjusted for age, sex, BMI and T2D showed that NAFLD was causally associated with HCC (beta $+0.30\pm 0.06$, odds ratio (OR) 1.35, 1.18-1.58, $p=1*10^{-5}$ for PRS-HFC; beta $+0.29\pm 0.07$, OR 1.27, 1.10-1.45, $p=1*10^{-5}$ for PRS-5). The association coefficient was attenuated by 37-41%, but remained statistically significant, after further correction for severe liver fibrosis ($p<0.05$). Formal mediation analysis is reported in Supplementary Results.

Estimation of causality by a range of modern Mendelian randomization approaches, taking into account the possible pleiotropic effects of the genetic instruments (e.g. a direct impact on HCC not mediated by NAFLD), and other sensitivity analyses were generally consistent with a causal effect of NAFLD on HCC, and are reported in Supplementary Results, Fig. S1 and Table S3.

PRS-HFC and PRS-5 predict the full spectrum of NAFLD

The impact of PRS on the full spectrum of liver disease in the NAFLD cohort is reported in Fig. 2 and Table 1 (upper panel). PRS were associated with a ~12-fold increased OR of severe fibrosis ($p<10^{-27}$ for both) and a ~9-fold increased OR of HCC (OR=9.2, 5.2-16.3, $p=2.7*10^{-14}$ for PRS-HFC; and OR=9.1, 5.2-16.0, $p=1.6*10^{-14}$ for PRS-5). The association was independent of age, sex, BMI and T2D ($p<0.01$ for both), but not of severe fibrosis ($p>0.1$). In the NAFLD cohort, there was no

significant interaction between PRS and BMI, T2D or HOMA-IR in determining HCC risk ($p > 0.1$). Similar results were obtained in the German NAFLD cohort (see Supplementary Results).

Similarly, PRS were associated with cirrhosis and HCC in the UKBB cohort, both in the overall cohort and in individuals without chronic viral hepatitis (Table 1, bottom panel). In this latter group, PRS were associated with >15-fold increased OR of HCC (OR=15.3, 8.1-28.7, $p = 2.6 \times 10^{-17}$ for PRS-HFC; and OR=15.9, 8.6-29.1, $p = 4.4 \times 10^{-19}$ for PRS-5). The association between PRS and HCC remained significant after adjustment for cirrhosis and was more robust in individuals without chronic viral hepatitis (OR 6.6, 3.4-12.7, $p = 1.7 \times 10^{-8}$ for PRS-HFC; and OR=6.9, 3.6-13.1, $p = 4.7 \times 10^{-9}$ for PRS-5). These data are consistent with a causative effect of genetic predisposition to hepatic fat accumulation on carcinogenesis, which is partially mediated by severe fibrosis.

Diagnostic accuracy of PRS for HCC and identification of thresholds associated with high genetic risk

In the NAFLD cohort, the area under the ROC curve (AUROC) for HCC was 0.64 for PRS-HFC and 0.65 for PRS-5 (Table 2). A value of ≥ 0.532 was identified as the best single cut-off for PRS-HFC, with 43% sensitivity and 80% specificity. For PRS-5, the corresponding cut-off (43% sensitivity and 79% specificity) was ≥ 0.495 (Table 2 and Fig. 3). Hereinafter, we define PRS-HFC ≥ 0.532 and PRS-5 ≥ 0.495 as ‘positive’ tests. In the UKBB cohort, both PRS had the same AUROC (0.63), and high scores had a lower sensitivity but higher specificity than in the NAFLD cohort (27% and 90% respectively) (Table 3).

Both PRS were able to predict HCC more robustly than single variants, with PRS-5 conferring a slight improvement over PRS-HFC (Table S4). Positive PRS tests were associated with an ~3-fold increased HCC risk both in the NAFLD ($p < 10^{-12}$) and the UKBB ($p \leq 10^{-13}$) cohorts, reaching almost a 4-fold increased risk ($p < 10^{-14}$) for non-viral HCC (Table 2 and Table 3); in the UKBB cohort, the association was independent of cirrhosis ($p < 10^{-5}$ in the overall cohort and $p < 10^{-7}$ in non-viral cohort; Table S4).

In the NAFLD cohort, the prevalence of positive tests was 22.2% for PRS-HFC and 22.9% for PRS-5. Positive PRS were associated with a three-fold higher risk of HCC (Table 2; $p < 10^{-12}$ for both). We next tested whether the association of HCC positive tests was independent of severe fibrosis. PRS tests predicted HCC also in patients without severe fibrosis (OR > 2.0, 1.1-3.8, $p = 3.3 \times 10^{-2}$ for PRS-HFC; and OR = 2.3, 1.2-4.5, $p = 1.2 \times 10^{-2}$ for PRS-5; Table S5), and improved HCC detection in individuals aged over 40 years independently of severe fibrosis (OR = 1.5, 1.1-2.2, $p = 1.0 \times 10^{-2}$ for PRS-HFC; and OR = 1.5, 1.1-2.1, $p = 2.4 \times 10^{-2}$ for PRS-5). Additional sensitivity analyses and validation in the German cohort are presented in Table S5 and Supplementary Results.

In the UKBB cohort (see Table 3, Table S6 and Table S7), the prevalence of positive tests was 11.1% for PRS-HFC and 10.8% for PRS-5. Positive PRS tests had a 27% sensitivity and 90% specificity and were associated with a ~2-fold higher OR of HCC in individuals without cirrhosis ($p < 0.05$) and with a ~3-fold higher OR in those with cirrhosis ($p < 10^{-5}$). Importantly, they showed higher performance in individuals with obesity/T2D (OR 5.2/4.4, respectively; Table 3). The diagnostic accuracy of positive PRS tests in other clinically relevant subgroups is reported in Supplementary Results, but it was higher in individuals with obesity and/or T2D (~40% sensitivity and 90% specificity). This observation is consistent with the presence of a significant interaction between PRS and BMI, probably mediated by FLD in determining HCC in individuals without chronic viral hepatitis ($p = 0.02$ and $p = 0.012$ for PRS-HFC and PRS-5, respectively).

Discussion

In this study, we used genetic instruments to a) examine whether weighted PRS, reflecting the genetic predisposition to accumulate liver fat and develop NAFLD, predict HCC development in at-risk individuals and in the general population, and b) evaluate the causal relationship between NAFLD and HCC. Next, we determined the diagnostic accuracy of PRS thresholds to indicate increased genetic risk of HCC. Despite limitations related to the potential heterogeneity of the metabolic and carcinogenic effects of the genetic variants, results were generally consistent with the presence of a causal link between hepatic fat accumulation and HCC. Upon confirmation by further studies, this relationship would suggest that approaches/drugs aiming to reduce liver fat may contribute to prevent HCC.^{4-7,31} As we exploited simple yet very robust PRS based on a limited number of validated risk variants that can be used irrespective of the presence of liver disease in subjects with dysmetabolism, these data may provide a new instrument that, upon refinement and further testing, may guide a cost-effective surveillance for HCC.

We focused our analyses on individuals with dysmetabolism and specifically in those with NAFLD or metabolic risk factors but no severe liver fibrosis. This is because a) they represent a large fraction of the general population and b) there is no accurate biomarker to predict HCC in these individuals. We did not exclude those with moderate alcohol intake in the general population due to the difficulties in the assessment of average alcohol intake and of synergic effect of alcohol with dysmetabolism in the pathogenesis of FLD. In individuals with dysmetabolism, who are mostly unaware that they have liver disease, HCC surveillance is not currently performed due to the lack of cost-effective approaches. Therefore, we identified PRS thresholds, which showed a high specificity for HCC, allowing the identification of a subset of individuals who may benefit from further refinement of HCC risk stratification by the combined use of other biomarkers and imaging approaches. Furthermore, these individuals at high genetic risk may benefit from lifestyle and pharmacological approaches to halt liver disease progression.

The first main study finding was that genetic predisposition to liver fat accumulation results in an increased HCC risk, consistently with causation, both in at-risk individuals with NAFLD and in the general population, where the effect of PRS on HCC risk was larger in those with dysmetabolism. An association consistent with a causal relationship between genetic predisposition to hepatic fat and HCC was also confirmed in the NAFLD cohort by modern robust Mendelian randomization approaches that take into account the heterogeneity of the effects of the genetic instruments, e.g. the possibility that they promote liver cancer independently of the impact on liver fat.³⁰ The only exception to the direct correlation between the risk of NAFLD and that of HCC was related to *GCKR* variation, which decreases T2D risk, and may therefore have led to an underestimation of the causal relationship between hepatic fat and HCC.¹² Secondly, we showed that the association between genetic predisposition to hepatic fat accumulation and HCC was partly, but not completely, mediated by the promotion of severe fibrosis. This result is consistent with the clinical observation that HCC occurs in individuals without severe liver fibrosis and suggests that liver fat accumulation favours directly hepatic carcinogenesis. The significant interaction between PRS and adiposity on HCC risk at population level is also consistent with a causal association of NAFLD with HCC.³⁰ However, the present analysis was not able to discriminate whether quantitative or qualitative changes in liver fat content or lipotoxicity predispose to HCC.

Despite the robust statistical association, and the fact that PRS predicted HCC more accurately than single variants reported in clinical guidelines,³² as expected PRS alone had a moderate accuracy to predict HCC (AUROC 0.65 in the NAFLD cohort, 0.70 in individuals with T2D in the UKBB cohort). However, PRS are easily determined by a simple, once-in-a-lifetime blood test, are independent of fluctuations of environmental triggers, and predict the future development of cirrhosis, which frequently precedes HCC. Therefore, we reasoned that if we could find a threshold to identify HCC with a high predictive value, this may be the first step towards a cost-effective HCC surveillance to a subset of individuals with inborn and acquired risk for this disease. We therefore selected the best PRS thresholds (i.e. $\geq 0.532/0.495$ for PRS-HFC/PRS-5) to predict HCC in the NAFLD cohort. Positive tests were associated with a >3-fold higher adjusted OR of HCC, as confirmed in an

independent German NAFLD cohort and in the UKBB cohort. In particular, positive PRS tests conferred a >5-fold higher risk in obese individuals from the general population. In the UKBB cohort, ~11% of individuals had high PRS, which despite limited sensitivity had a good specificity for detection of non-viral HCC (~90%). In individuals with dysmetabolism from the general population, a clinically relevant setting where the prevalence of HCC was relatively low, PRS reached a higher accuracy to detect HCC (OR>4.4). The improved sensitivity (~40%, positive likelihood ratio ~3.7-3.9) is consistent with the synergic effect between obesity and genetic predisposition in determining NAFLD.³³

PRS predicted HCC independently of the presence of severe fibrosis in the NAFLD cohort and of cirrhosis in the UKBB cohort, especially in younger patients and in those with T2D. Therefore, more accurate evaluation of liver damage and possibly HCC surveillance may be recommended to individuals with dysmetabolism older than 40 years. Although the selection of a subset at risk due to the high PRS will not detect a large fraction of HCC cases in individuals without clinical evidence of cirrhosis, it would still represent a step forward compared to the current absence of any surveillance in this group. Alternatively, PRS could be integrated with classical risk factors and other biomarkers for repeated evaluations of HCC risk in individuals with dysmetabolism, but the relative cost-effectiveness of these strategies remains to be determined.

Previous studies from our group evaluated the role of PRS to predict HCC.^{15,16,18} Recently, Gellert-Kristensen *et al.* tested an unweighted PRS that confirmed a robust association with the risk of HCC in both the Danish general population and in UKBB, based on a smaller number of cases than in the present study.¹⁹ Our study is novel in several aspects. First, we focused on HCC risk and weighted the impact of a larger panel of variants on FLD, likely providing a more accurate estimate and being able to make inferences on the causal relationship on HCC. Second, we tested the impact of PRS in individuals at high risk of liver disease, stratifying the analyses by liver fibrosis severity. Third, we tested the diagnostic accuracy of PRS in clinically relevant subgroup of individuals from the general population, in particular in those without cirrhosis and with obesity.

Limitations of the present study include the cross-sectional design of the NAFLD cohort, although it included a larger number of HCC cases than previous studies. Individuals without severe fibrosis and controls were younger than those with more advanced disease or HCC, which limited the power to detect and underestimated the impact of genetic factors, as it cannot be ruled out that some participants with positive PRS will progress to advanced liver disease and HCC. Prospective studies will therefore be necessary to more accurately assess the magnitude of the increase in HCC risk conferred by PRS. Importantly, we recently showed that high PRS-HFC predicted HCC incidence in a prospective cohort of patients with cirrhosis in whom HCV had been eradicated by antiviral drugs; the association was independent of classical risk factors including fibrosis severity, improving risk stratification.³⁴ Notably, the best PRS-HFC threshold to discriminate higher HCC risk was superimposable to that identified in the present study in the NAFLD cohort. Lastly, other inherited genetic determinants of the risk of liver damage in the general population may modify HCC risk (e.g. *HFE* and *SERPINA1* mutations for Europeans),³⁵ so that their inclusion in updated PRS may further improve their accuracy, and results may not apply entirely to non-European populations.

In conclusion, and with the limitations highlighted in the discussion, the results of the present study are consistent with a causal role of hepatic fat accumulation in hepatic carcinogenesis. PRS may be useful to non-invasively predict the risk of HCC in individuals with NAFLD and dysmetabolism, independently of severe liver fibrosis, and positive PRS identify a subset of individuals with dysmetabolism at high genetic risk of HCC. Large studies integrating genetic and other biomarkers are necessary to further improve the risk stratification and facilitate the clinical implementation of these findings.

Abbreviations: BMI: body mass index, FLD: fatty liver disease, *GCKR*: glucokinase regulator, HCC: hepatocellular carcinoma, HFC: hepatic fat content, *HSD17B13*: 17 β -hydroxysteroid dehydrogenase type 13, MAFLD: metabolic associated fatty liver disease, *MBOAT7*: membrane bound O-acyltransferase domain containing 7, NAFLD: nonalcoholic fatty liver disease, PC: principal component, *PNPLA3*: patatin-like phospholipase domain-containing protein 3, PRS: polygenic risk score; *TM6SF2*: transmembrane 6 superfamily member 2, T2D: type 2 diabetes, UKBB: UK Biobank.

Acknowledgements: We thank Rosie Perkins, University of Goteborg, for editing the final version of the manuscript.

Journal Pre-proof

REFERENCES

- [1] Ferlay J, Shin HR, Bray F, Forman D, Mathers C, Parkin DM. Estimates of worldwide burden of cancer in 2008: GLOBOCAN 2008. *Int J Cancer* 2010;127:2893-2917.
- [2] **Anstee QM, Reeves HL, Kotsiliti E**, Govaere O, Heikenwalder M. From NASH to HCC: current concepts and future challenges. *Nat Rev Gastroenterol Hepatol* 2019;16:411-428.
- [3] **Eslam M, Newsome PN**, Anstee QM, Targher G, Gomez MR, Zelber-Sagi S, et al. A new definition for metabolic associated fatty liver disease: an international expert consensus statement. *J Hepatol* 2020.
- [4] Younossi Z, Henry L. Contribution of Alcoholic and Nonalcoholic Fatty Liver Disease to the Burden of Liver-Related Morbidity and Mortality. *Gastroenterology* 2016;150:1778-1785.
- [5] **Dyson J, Jaques B**, Chattopadhyay D, Lochan R, Graham J, Das D, et al. Hepatocellular cancer: The impact of obesity, type 2 diabetes and a multidisciplinary team. *J Hepatol* 2013.
- [6] Baffy G, Brunt EM, Caldwell SH. Hepatocellular carcinoma in non-alcoholic fatty liver disease: An emerging menace. *J Hepatol* 2012;56:1384-1391.
- [7] Park JW, Chen M, Colombo M, Roberts LR, Schwartz M, Chen PJ, et al. Global patterns of hepatocellular carcinoma management from diagnosis to death: the BRIDGE Study. *Liver Int* 2015;35:2155-2166.
- [8] Estes C, Anstee QM, Arias-Loste MT, Bantel H, Bellentani S, Caballeria J, et al. Modeling NAFLD disease burden in China, France, Germany, Italy, Japan, Spain, United Kingdom, and United States for the period 2016-2030. *J Hepatol* 2018;69:896-904.
- [9] Loomba R, Lim JK, Patton H, El-Serag HB. AGA Clinical Practice Update on Screening and Surveillance for Hepatocellular Carcinoma in Patients With Nonalcoholic Fatty Liver Disease: Expert Review. *Gastroenterology* 2020.
- [10] Piscaglia F, Svegliati-Baroni G, Barchetti A, Pecorelli A, Marinelli S, Tiribelli C, et al. Clinical patterns of hepatocellular carcinoma in nonalcoholic fatty liver disease: A multicenter prospective study. *Hepatology* 2016;63:827-838.
- [11] Younossi ZM, Otgonsuren M, Henry L, Venkatesan C, Mishra A, Erario M, et al. Association of nonalcoholic fatty liver disease (NAFLD) with hepatocellular carcinoma (HCC) in the United States from 2004 to 2009. *Hepatology* 2015;62:1723-1730.
- [12] Trepo E, Valenti L. Update on NAFLD genetics: From new variants to the clinic. *J Hepatol* 2020.
- [13] Pelusi S, Valenti L. Hepatic fat as clinical outcome and therapeutic target for nonalcoholic fatty liver disease. *Liver Int* 2019;39:250-256.
- [14] Liu YL, Patman GL, Leathart JB, Piguat AC, Burt AD, Dufour JF, et al. Carriage of the PNPLA3 rs738409 C >G polymorphism confers an increased risk of non-alcoholic fatty liver disease associated hepatocellular carcinoma. *J Hepatol* 2013;61:75-81.
- [15] **Pelusi S, Baselli G**, Pietrelli A, Dongiovanni P, Donati B, McCain MV, et al. Rare Pathogenic Variants Predispose to Hepatocellular Carcinoma in Nonalcoholic Fatty Liver Disease. *Sci Rep* 2019;9:3682.
- [16] **Donati B, Dongiovanni P**, Romeo S, Meroni M, McCain M, Miele L, et al. MBOAT7 rs641738 variant and hepatocellular carcinoma in non-cirrhotic individuals. *Sci Rep* 2017;7:4492.
- [17] Abul-Husn NS, Cheng X, Li AH, Xin Y, Schurmann C, Stevis P, et al. A Protein-Truncating HSD17B13 Variant and Protection from Chronic Liver Disease. *N Engl J Med* 2018;378:1096-1106.
- [18] Dongiovanni P, Stender S, Pietrelli A, Mancina RM, Cespiati A, Petta S, et al. Causal relationship of hepatic fat with liver damage and insulin resistance in nonalcoholic fatty liver. *J Intern Med* 2018;283:356-370.
- [19] Gellert-Kristensen H, Richardson TG, Davey Smith G, Nordestgaard BG, Tybjaerg-Hansen A, Stender S. Combined Effect of PNPLA3, TM6SF2, and HSD17B13 Variants on Risk of Cirrhosis and Hepatocellular Carcinoma in the General Population. *Hepatology* 2020.

- [20] Dongiovanni P, Petta S, Maglio C, Fracanzani A, Pipitone RM, Mozzi E, et al. TM6SF2 Gene Variant Disentangles Nonalcoholic Steatohepatitis from Cardiovascular Disease. *Hepatology* 2015;61:506-514.
- [21] Dongiovanni P, Meroni M, Baselli GA, Mancina RM, Ruscica M, Longo M, et al. PCSK7 gene variation bridges atherogenic dyslipidemia with hepatic inflammation in NAFLD patients. *J Lipid Res* 2019.
- [22] Eddowes PJ, Sasso M, Allison M, Tsochatzis E, Anstee QM, Sheridan D, et al. Accuracy of FibroScan Controlled Attenuation Parameter and Liver Stiffness Measurement in Assessing Steatosis and Fibrosis in Patients With Nonalcoholic Fatty Liver Disease. *Gastroenterology* 2019;156:1717-1730.
- [23] EASL-EORTC clinical practice guidelines: management of hepatocellular carcinoma. *J Hepatol* 2012;56:908-943.
- [24] Bedogni G, Bellentani S, Miglioli L, Masutti F, Passalacqua M, Castiglione A, et al. The Fatty Liver Index: a simple and accurate predictor of hepatic steatosis in the general population. *BMC Gastroenterol* 2006;6:33.
- [25] Genomes Project C, Auton A, Brooks LD, Durbin RM, Garrison EP, Kang HM, et al. A global reference for human genetic variation. *Nature* 2015;526:68-74.
- [26] Sudlow C, Gallacher J, Allen N, Beral V, Burton P, Danesh J, et al. UK biobank: an open access resource for identifying the causes of a wide range of complex diseases of middle and old age. *PLoS Med* 2015;12:e1001779.
- [27] Bycroft C, Freeman C, Petkova D, Band G, Elliott LT, Sharp K, et al. The UK Biobank resource with deep phenotyping and genomic data. *Nature* 2018;562:203-209.
- [28] **Mancina RM, Dongiovanni P**, Petta S, Pingitore P, Meroni M, Rametta R, et al. The MBOAT7-TMC4 Variant rs641738 Increases Risk of Nonalcoholic Fatty Liver Disease in Individuals of European Descent. *Gastroenterology* 2016;150:1219-1230 e1216.
- [29] Lawlor DA, Harbord RM, Sterne JA, Timpson N, Davey Smith G. Mendelian randomization: using genes as instruments for making causal inferences in epidemiology. *Stat Med* 2008;27:1133-1163.
- [30] Davies NM, Holmes MV, Davey Smith G. Reading Mendelian randomisation studies: a guide, glossary, and checklist for clinicians. *BMJ* 2018;362:k601.
- [31] Romeo S, Sanyal A, Valenti L. Leveraging Human Genetics to Identify Potential New Treatments for Fatty Liver Disease. *Cell Metab* 2020;31:35-45.
- [32] European Association for the Study of the Liver . Electronic address eee, European Association for the Study of D, European Association for the Study of O. EASL-EASD-EASO Clinical Practice Guidelines for the management of non-alcoholic fatty liver disease. *J Hepatol* 2016;64:1388-1402.
- [33] Stender S, Kozlitina J, Nordestgaard BG, Tybjaerg-Hansen A, Hobbs HH, Cohen JC. Adiposity amplifies the genetic risk of fatty liver disease conferred by multiple loci. *Nat Genet* 2017;49:842-847.
- [34] Degasperis E, Galmozzi E, Pelusi S, D'Ambrosio R, Soffredini R, Borghi M, et al. Hepatic fat - genetic risk score predicts hepatocellular carcinoma in HCV cirrhotic patients treated with DAAs. *Hepatology* 2020.
- [35] Valenti L. Uncovering the genetics of cirrhosis: New plots for the usual suspects. *Liver Int* 2020;40:281-282.

Author names in bold designate share co-first authorship.

Tables

Table 1. PRS-HFC and PRS-5 are independent predictors of liver disease in the NAFLD and in the UKBB cohorts.

	Univariate analysis			Model 1 *			Model 2 **		
	p value	OR	95% c.i.	p value	OR	95% c.i.	p value	OR	95% c.i.
NAFLD cohort									
PRS- HFC									
FLD	4.4*10 ⁻²⁶	8.4	5.7-12.5	9.2*10 ⁻²¹	10.1	6.2-16.5	-	-	-
Fibrosis F3- F4	9.5*10 ⁻²⁸	11.4	7.4-17.7	7.0*10 ⁻¹³	7.5	4.3-13.0	-	-	-
HCC	2.7*10 ⁻¹⁴	9.2	5.2-16.3	3.6*10 ⁻³	3.0	1.4-6.4	1.5*10 ⁻¹	1.8	0.8-3.9
PRS-5									
FLD	6.0*10 ⁻²⁷	9.0	6.0-13.4	1.5*10 ⁻²¹	10.7	6.6-17.3	-	-	-
Fibrosis F3- F4	1.1*10 ⁻³⁰	12.6	8.2-19.3	1.0*10 ⁻¹⁵	9.4	5.4-16.2	-	-	-
HCC	1.6*10 ⁻¹⁴	9.1	5.2-16.0	1.7*10 ⁻³	3.3	1.6-6.9	1.3*10 ⁻¹	1.8	0.8-4.1
UKBB cohort									
PRS-HFC									
Cirrhosis	7.3*10 ⁻³²	4.1	3.2-5.1	6.4*10 ⁻³³	4.2	3.3-5.3	-	-	-
HCC	4.8*10 ⁻¹⁵	11.1	6.1-20.4	5.0*10 ⁻¹⁵	11.1	6.1-20.2	1.5*10 ⁻⁶	4.6	2.5-8.6
PRS-5									
Cirrhosis	1.4*10 ⁻³⁶	4.4	3.5-5.6	3.3*10 ⁻³⁷	4.5	3.6-5.7	-	-	-
HCC	8.6*10 ⁻¹⁷	11.9	6.6-21.3	1.2*10 ⁻¹⁶	11.7	6.54-21	5.9*10 ⁻⁷	4.8	2.6-8.9

* At logistic regression adjusted for age, sex, BMI, T2D, and further adjusted for ethnicity (PC1:10), array batch, assessment centre in the UKBB cohort.

** Further adjusted for the presence of severe fibrosis (stage F3-F4) in the NAFLD cohort or diagnosis of cirrhosis in the UKBB cohort.

Abbreviations: OR: odds ratio, 95% c.i.: 95% confidence interval, NAFLD: non-alcoholic fatty liver disease, HCC: hepatocellular carcinoma, BMI: body mass index, T2D: type 2 diabetes, PRS-HFC: polygenic risk score of hepatic fat content considering variants in *PNPLA3-TM6SF2-MBOAT7-GCKR*; PRS-5: polygenic risk score considering 5 risk variants (further adjusted for *HSD17B13* variation).

Table 2. Diagnostic accuracy of PRS-HFC (n=2,564) and PRS-5 (n=2,245) for HCC in the NAFLD cohort.

	PRS-HFC	PRS-5
AUROC	0.64	0.65
Diagnostic threshold	0.532	0.495
Prevalence (%)	569 (22.2)	580 (22.9)
OR (95% c.i.)	3.0 (2.2-3.9)	2.9 (2.1-3.8)
p value*	3.7×10^{-14}	8.1×10^{-13}
Sensitivity (95% c.i.)	0.43 (0.37-0.49)	0.43 (0.37-0.50)
Specificity (95% c.i.)	0.80 (0.78-0.81)	0.79 (0.77-0.81)
PPV (95% c.i.)	0.17 (0.14-0.20)	0.16 (0.13-0.19)
NPV (95% c.i.)	0.93 (0.92-0.94)	0.94 (0.93-0.95)
LR+ (95% c.i.)	2.13 (1.79-2.52)	2.06 (1.74-2.54)
LR- (95% c.i.)	0.71 (0.64-0.80)	0.72 (0.64-0.81)

*At logistic regression analysis. Abbreviations: AUROC: area under the receiver operating characteristic curve; OR: odds ratio, 95% c.i.: 95% confidence interval; PPV: positive predictive value; NPV: negative predictive value; LR+: positive likelihood ratio; LR-: negative likelihood ratio; PRS-HFC: polygenic risk score of hepatic fat content considering variants in *PNPLA3-TM6SF2-MBOAT7-GCKR*; PRS-5: polygenic risk score considering 5 risk variants (further adjusted for *HSD17B13* variation); HCC: hepatocellular carcinoma.

Table 3. Diagnostic accuracy of PRS-HFC ≥ 0.532 and PRS-5 ≥ 0.495 for HCC in the UKBB cohort (overall, in non-cirrhotic individuals and in participants stratified by the presence of obesity or T2D.)

	Overall	No cirrhosis	BMI ≥ 30	T2D
UKBB cohort				
Cases N	198	95	88	81
PRS-HFC median (IQR) cases	0.337 (0.128-0.595)	0.266 (0.128-0.394)	0.4 (0.192-0.604)	0.394 (0.240-0.603)
Controls N	358,126	356,725	86,116	25,051
PRS-HFC median (IQR) controls	0.193 (0.126-0.394)	0.193 (0.126-0.394)	0.193 (0.126-0.394)	0.193 (0.126-0.394)
AUROC (PRS-HFC)	0.63	0.55	0.69	0.70
Positive PRS prevalence (%)	35,734 (11.1)	35,458 (11.0)	8,497 (10.9)	2,741 (12.2)
OR (95% c.i.)	3.3 (2.4-4.5)	1.8 (1.1-3.1)	5.2 (3.4-8.1)	4.4 (2.7-6.9)
p value*	1.0×10^{-13}	2.7×10^{-2}	8.3×10^{-14}	3.6×10^{-10}
Sensitivity, %	27%	17%	36%	35%
Specificity, %	90%	90%	90%	89%
PPV	0.01	0.01	0.01	0.01
NPV	1.00	1.00	1.00	1.00
LR+	2.69	1.70	3.70	3.19
LR-	0.81	0.92	0.71	0.73
Cases N	197	95	87	80
PRS-5 median (IQR) cases	0.292 (0.126-0.524)	0.193 (0.063-0.394)	0.394 (0.161-0.597)	0.394 (0.193-0.587)
Controls N	356,746	355,355	85,803	24,959
PRS-5 median (IQR) controls	0.174 (0.063-0.337)	0.174 (0.063-0.337)	0.167 (0.063-0.337)	0.191 (0.063-0.337)
AUROC (PRS-5)	0.63	0.54	0.69	0.71
Positive PRS prevalence (%)	34,673 (10.8)	34,405 (10.7)	8,217 (10.6)	2,644 (11.8)
OR (95% c.i.)	3.4 (2.5-4.7)	1.9 (1.1-3.2)	5.5 (3.6-8.5)	4.6 (2.9-7.3)
p value*	1.9×10^{-14}	2.0×10^{-2}	1.7×10^{-14}	8.9×10^{-11}
Sensitivity, %	27%	17%	37%	35%
Specificity, %	90%	90%	90%	90%
PPV	0.01	0.01	0.01	0.01
NPV	1.00	1.00	1.00	1.00
LR+	2.77	1.74	3.86	3.34
LR-	0.81	0.92	0.70	0.73

*At logistic regression analysis. Polygenic risk scores values are reported as median (IQR).

Abbreviations: N: number, OR: odds ratio; 95% c.i.: 95% confidence interval; AUROC: area under the receiving operator characteristic curve; PPV: positive predictive value; NPV: negative predictive

value; LR+: positive likelihood ratio; LR-: negative likelihood ratio; PRS-HFC: polygenic risk score of hepatic fat content considering variants in *PNPLA3-TM6SF2-MBOAT7-GCKR*; PRS-5: polygenic risk score considering 5 risk variants (further adjusted for *HSD17B13* variation), BMI: body mass index, T2D: type 2 diabetes.

Journal Pre-proof

Figure legends

Fig. 1. Correlation between the impact of genetic risk variants in *PNPLA3*, *TM6SF2*, *MBOAT7*, *GCKR*, and *HSD17B13* on the risk of fatty liver disease (FLD), severe fibrosis and HCC in the NAFLD cohort. Correlations coefficients and 95% confidence intervals at generalized linear regression models are reported. (A) Correlation between the impact on the risk of FLD and severe fibrosis; (B) correlation between the impact on the risk of FLD and HCC; (C) correlation between the impact on the risk of severe fibrosis and HCC. p values were determined at generalized linear regression analysis.

Fig. 2. Impact of the PRS-HFC and the PRS-5 on the full spectrum of fatty liver disease (FLD) in the NAFLD cohort, as evaluated by logistic regression analysis.

Fig. 3. Comparison of the diagnostic accuracy of the PRS-HFC and the PRS-5 for HCC in the NAFLD cohort. The AUROC of the two PRS to predict HCC and the optimal diagnostic thresholds are shown.

Fig. 4. Association of PRS-HFC ≥ 0.532 and PRS-5 ≥ 0.495 with HCC in individuals included in the NAFLD cohort at logistic regression analysis stratified by the presence of the main risk factors (fibrosis severity, age, BMI: body mass index, T2D: type 2 diabetes).

Figure 1

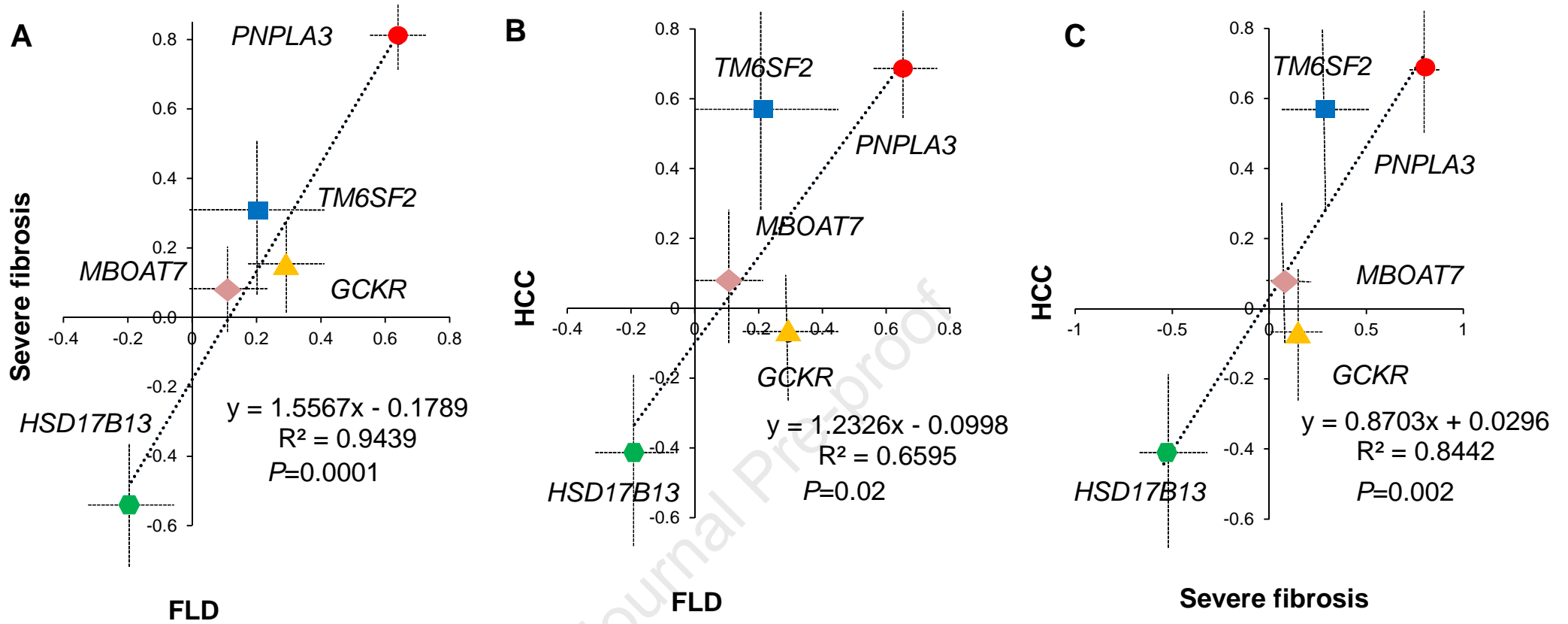


Figure 2

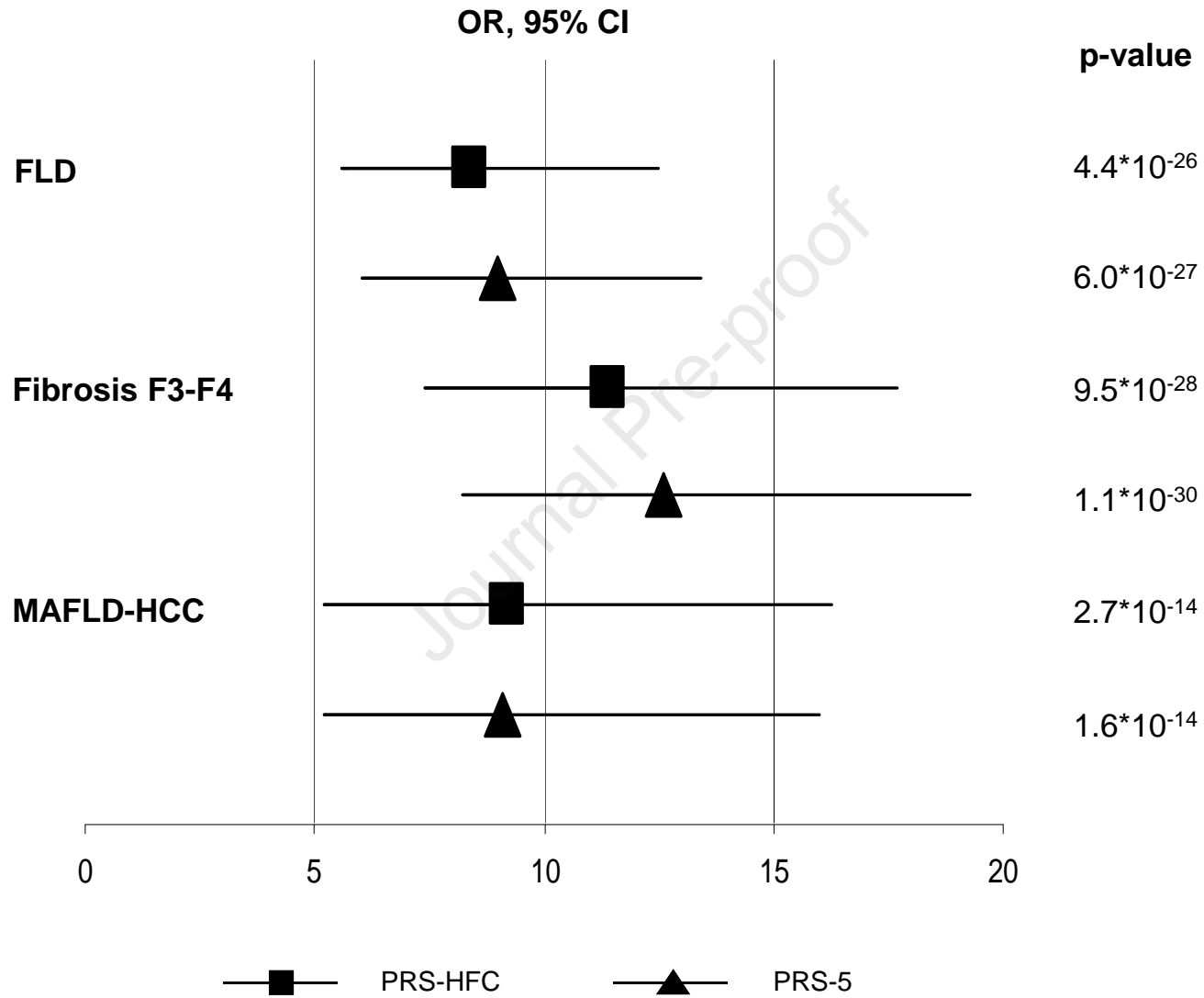


Figure 3

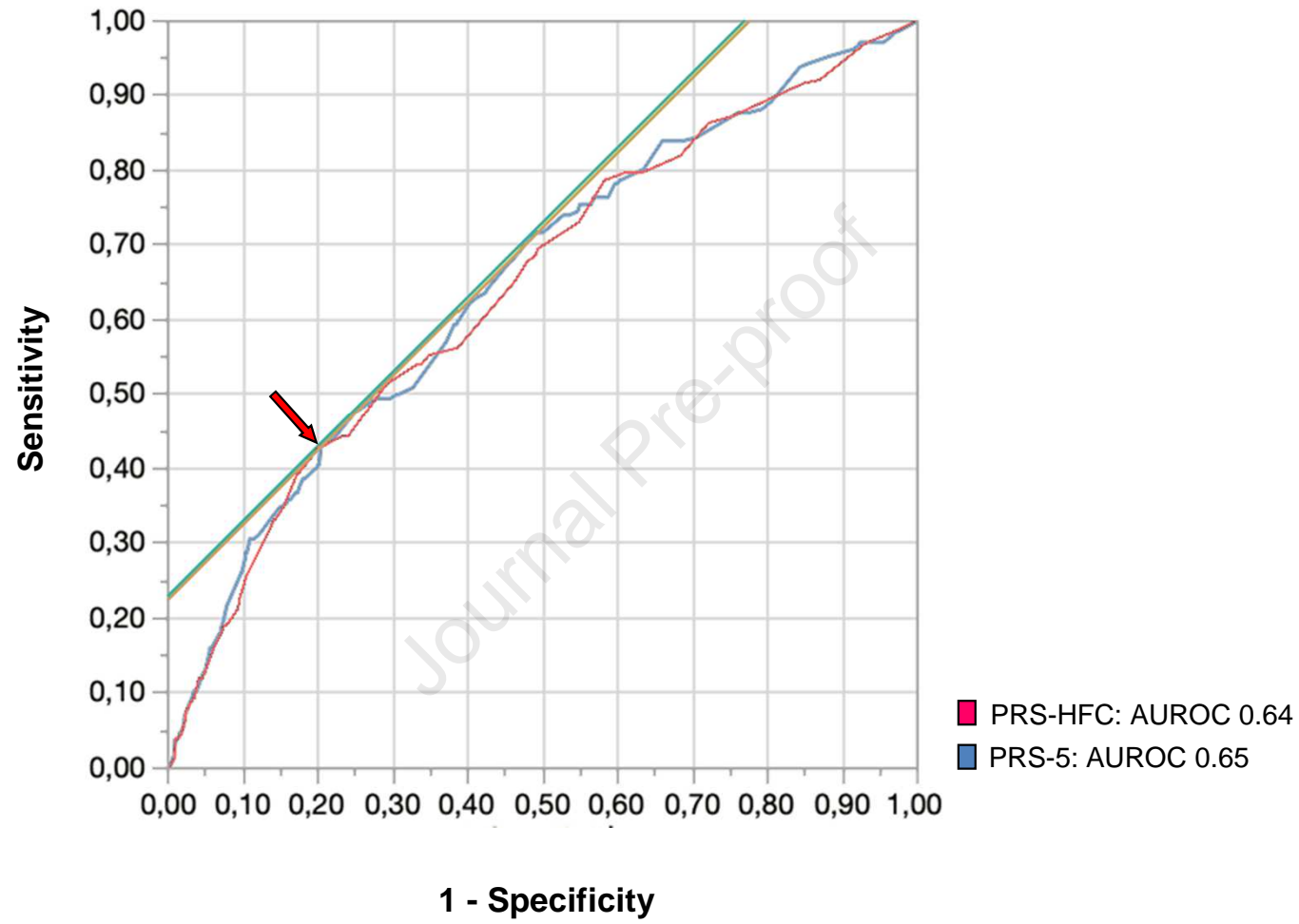
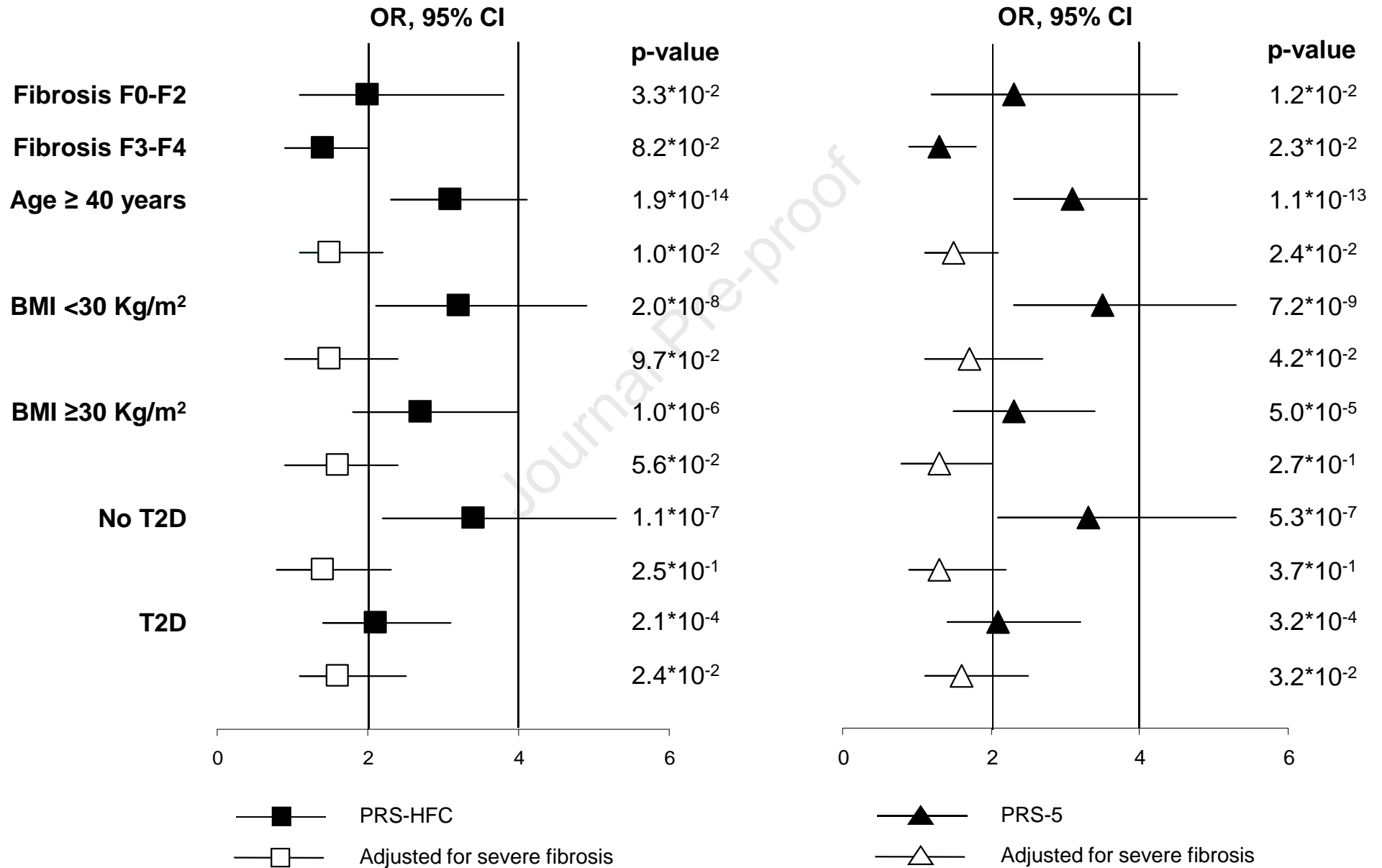


Figure 4



HIGHLIGHTS

- Genetic predisposition to liver fat accumulation predisposes to cirrhosis and HCC.
- Hepatic fat promotes carcinogenesis, partly via fibrosis.
- Polygenic risk scores may improve HCC risk stratification during dysmetabolism.

Journal Pre-proof