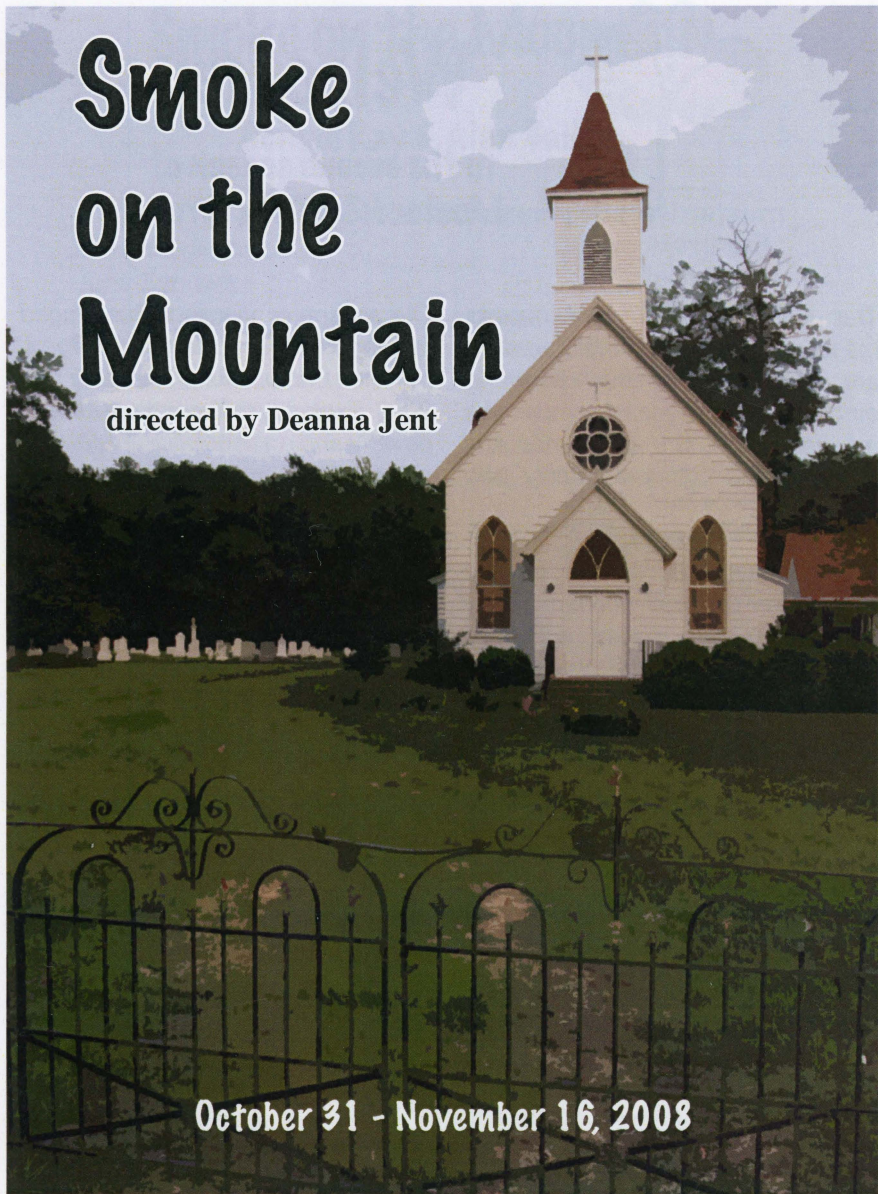


Smoke on the Mountain

directed by Deanna Jent



October 31 - November 16, 2008



The Mustard Seed Theatre

6800 Wydown Blvd., Clayton, MO 63105

314-719-8060

www.mustardseedtheatre.com



Welcome!

to the second season of Mustard Seed Theatre...

The joyful melodies and hopeful message of **Smoke on the Mountain** are a reflection of our delight in embarking on a second season. We are happy to share the stories and songs of the Sanders Family with you.

The characters in **Smoke on the Mountain** share contemporary concerns about money and jobs - while set in 1938, the play mirrors current economic concerns. Along with those worries, we see a family dealing with growing pains: teenage rebellion and uncertainty, sibling discord, the death of a parent. But through it all, the Sanders Family (and Pastor Oglethorpe) see their faith as a lighthouse guiding them through the stormy waters. Their conviction that life will end with "No Tears in Heaven" gives them strength and peace.

We hope that the struggles and triumphs of the Sanders Family resonate in your life. Mustard Seed Theatre remains committed to producing compelling professional theatre that explores our relationship to God and our ethical responsibility to the world.

Our season continues with a staged reading of **Mother Teresa is Dead**, by Helen Edmundson, December 5-8, 2008. Exploring the complex issues of poverty and responsibility, this play is part of our Dijon Discussion series -- designed to cultivate dialogue about issues of social justice and faith.

The series continues March 6 - 15, 2009 with **An Almost Holy Picture** by Heather McDonald. Starring Gary Wayne Barker, this one-man show delves into the life of a grief-stricken pastor trying to find answers.

Our second season will close with Lynda Barry's **The Good Times Are Killing Me**, April 17-May 3, 2009. Set in a racially-divided 1962, this poignant and funny drama explores the friendship between 12-year olds experiencing puberty, prejudice, rock music and the accelerating civil rights movement on the streets of an ever-changing blue-collar neighborhood.

We hope that you'll enjoy this night of music and laughter and join us for our upcoming productions. Thanks for sharing your time with us!

Deanna Jent, Artistic Director

Production Manager: Carmen Russell

Resident Artists: Gary Wayne Barker, Adam Flores,
Kelley Ryan, Michael Sullivan, Leslie Wobbe

Smoke on the Mountain

by

Connie Ray & Alan Bailey

CAST (in order of appearance)

Mervin Oglethorpe	Christopher Hickey*
June Sanders	Colleen Backer
Vera Sanders	Deborah Sharn
Burl Sanders	Christopher Limber*
Denise Sanders	Jennifer M. Theby
Dennis Sanders	Dylan Duke
Stanley Sanders	Tim Schall*
Cousin Joe	Joe Schoen
Cousin Raphe	Raphe Makarewicz
Miss Maude	Leslie Wobbe
Miss Myrtle	Ann Cailteux
Miss Mabel	Kirsten Wylder

STAFF and CREW

Director	Deanna Jent
Musical Director	Joe Schoen
Stage Manager	Phil Bettison
Asst. Stage Manager	Katie Donnelly
Assistant Director	Molly Wright
Production Manager	Carmen Larimore Russell
Set Design	Daniel Lanier
Costume Design	Ann Cailteux
Light Design	Michael Sullivan
Technical Director	Jon Hisaw
Master Electrician	Bess Moynihan
Props Coordinator & Sound Board Operator	Jean Lang
Set & Costume Intern	Adrienne Curry
Light Design Intern	David Chandler, Justin Walker
Stitchers	Bonnie Jent, Lindzey Jent
Light Board Operators	Terrence Lovett, Justin Walker
House Managers	Ryan Cooper, Molly Wright
Poster Design	Mark Douglas

Setting

The sanctuary of the Mount Pleasant Baptist Church in Mount Pleasant, North Carolina, located just west of Hickory near the Blue Ridge Mountains. It is a Saturday night in June, 1938.

There will be one 15-minute intermission

*denotes a member of Actors Equity Association, the union of professional actors and stage managers

Biographies



COLLEEN BACKER has performed with local companies such as ACT Inc, New Jewish Theatre, The Orange Girls, West End Players Guild and last worked with Deanna Jent in Stray Dog Theatre's Kevin Kline nominated *You Can't Take It With You* as "Essie." She will be playing "Edna" in Mustard Seed Theatre's *The Good Times Are Killing Me* next year. She thanks Deanna for indirectly fulfilling her childhood dreams of becoming a silent film star and of playing Helen Keller. She gives the talented cast of actor-singer-musicians two thumbs way up, and heart-shapes to Andy.



PHIL BETTISON is a sophomore here at Fontbonne University majoring in theatre education. This is Phillip's first mainstage stage managing position. Phillip was last seen this past spring in Fontbonne's student production of *The Complete Works of William Shakespeare: Abridged!*. Look for Phillip in Mustard Seed's next mainstage show *The Good Times Are Killing Me*. Phillip would like to thank Katie for keeping him sane, the cast and crew for a doing a wonderful job, and sends his love to Cherry.

ADRIENNE CURRY is in her second year at Fontbonne University. She is so excited to be working with everyone at Mustard Seed Theatre. Peace, love, and all that other stuff.



ANN CAILTEUX is both excited and delighted to be a part of Mustard Seed's new season. A Kevin Kline Award nominee for the costumes for Mustard Seed's critically acclaimed production of *Remnant* last season, Ann has been active in St Louis theatre for over ten years. Some of her favorite productions include *Noises Off!* (Act, Inc/Fontbonne), *The Crucible* (Muddy Waters Theatre), *Red Herring* (HotHouse Theatre), *Titanic*, *The Musical* (Spotlight Productions), *Bent* (HotHouse Theatre) and *Marat/Sade* (Echo theatre Company). Ann is so very grateful to Deanna and Mustard Seed for their faith in her. She sends her love to Michael, the love of her life.

KATIE DONNELLY is a 4th year Performing Arts Student here at Fontbonne University. She just finished *The Big Slam* in which she was the Stage Manager. She has worked with Mustard Seed on *Remnant*, *The Unseen*, and *Measure For Measure*. She is happy and proud to be a part of this production and will be seen onstage in Mustard Seed's production of *The Good Times Are Killing Me*. She would like to thank Deanna and the cast for this wonderful experience and Phil for being the best stage manager ever.



DYLAN DUKE is glad to have this opportunity to work with Mustard Seed Theatre on a fun show full of music that he loves. A recent Saint Louis University graduate, Dylan worked with "some incredible professors" on productions such as *Kid Simple*, *Hedda Gabler*, and *A Midsummer Night's Dream*. He has also performed with the Shakespeare Festival of St. Louis and in *The Lost Colony* in Roanoke, North Carolina - where he sang with Andy Griffith. "I would like to thank God for all He has blessed me with and my parents for their love and support. My brothers and sisters are pretty cool too."



CHRISTOPHER HICKEY* makes his mainstage debut at Mustard Seed having appeared in last season's *The Unseen*, part of their Dijon Discussion Series. Other recent credits include *The Polish Egg Man* and *Knives and Hens* (Upstream Theater), *Greetings!* (St. Louis Actors' Studio), *Broadway Bound* (New Jewish Theatre) and *Demons...and Other Blunt Objects* (HotCity GreenHouse). Chris has also appeared with the Black Rep, City Players, St. Louis Shakespeare, Ozark Actors Theatre, River City Theatre and the dearly departed Historyonics. A proud 9-year member of Actors' Equity, Chris thanks Deanna, Joe and this terrific ensemble. For Cecilia, his most precious blessing.

Biographies

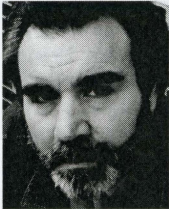


DEANNA JENT thanks her gospel-singing parents for instilling in her a love of music, and her family for the ongoing melodies that give her life meaning. A four-time nominee for the Kevin Kline Best Director award, Deanna has directed for many companies in St. Louis, including Act Inc, The New Jewish Theatre, The NonProphets, The Orange Girls and Stray Dog Theatre. She looks forward to directing *Windsor Live* for the Shakespeare Festival of St. Louis in 2009, and to Mustard Seed's Spring production of *The Good Times Are Killing Me*. Deanna thanks her colleagues at Fontbonne, who have supported her work for the past fourteen years, and her students, who teach her new things every day.

JON HISAW has been the assistant TD and shop foreman at Fontbonne University for the past 10 years. This is his second season working with the award winning Mustard Seed Theatre. It is always a pleasure to be part of a great group people. Thanks to Stevo for all his help, Mike Sullivan for everything, and always the great Mom and Dad for all their support.



JEAN LANG is in her first year at Fontbonne University pursuing a B.A. in Performing Arts with a Teaching Certificate. This is also Jean's first time to be participating in The Mustard Seed Theatre. Jean would like to thank Deanna Jent for this great opportunity and she especially wants to thank her family for all their love and support, you guys are the beat of my heart. Blessing to this awesome cast and crew!



CHRISTOPHER LIMBER* has performed in over 75 productions from coast to coast and is proud as a pickle to be performing *Burl* in his third Sanders production. His published scores include *The Ugly Duckling* and *The Secret Garden* (winning AATE's Most Distinguished Play Award). Chris has directed for Shakespeare Festival St. Louis, The Repertory Theatre of St. Louis, Opera Theatre Saint Louis, St. Louis Shakespeare and HotHouse Theatre and is currently Education Director for Shakespeare Festival St. Louis. SFSTL's touring productions of *The Tempest in a Flash!* (2005) and *Much A Doo-Wop About Nothing* (2007), which he co-wrote and directed, were nominated for Kevin Kline Awards as Best Children's Productions.



RAPHE MAKAREWICZ plays traditional Irish fiddle with the world-class St. Louis Irish Arts Senior Grupai Cheoil and has qualified 3 times for international competition in Ireland. He has played small roles in the Metro Youth Shakespeare Project and St. Louis Homeschool Network productions, and performed in the band of Circus Day Foundation's *Circus Harmony: Espressivo*. Most recently, he played the role of the young York in the Shakespeare Festival's *Richard III*. Raphe is delighted to be fiddling with such fine folks in a Mustard Seed production.

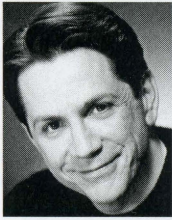


BESS MOYNIHAN is a recent graduate of Fontbonne University and is excited to return this year as Master Electrician. Bess is proud to be working with Mustard Seed Theatre again. She was last seen as Juliet in *Measure for Measure*, and looks forward to being in their spring show *The Good Times are Killing Me*. Thanks to Phil for his hard work and as always, to my loving friends and family.

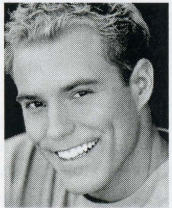


CARMEN RUSSELL is active in the local theatre scene both as a performer and stage manager. She is excited to now be a part of Mustard Seed Theatre as Production Manager and to learn the business side of theatre. Carmen is also an associate professor of speech-language pathology at Fontbonne University.

Biographies



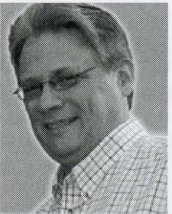
TIM SCHALL* is thrilled to be performing with Mustard Seed Theatre for the first time. A proud member of Actors Equity, Tim has performed with many St. Louis area theaters including The Muny, The St. Louis Black Repertory, The New Jewish Theater, Spotlight Theater, New Line Theater and Stages St. Louis. Tim is the producer of The St. Louis Cabaret Conference and has performed his original cabaret shows in St. Louis, Santa Fe, Chicago and Boston. Upcoming performances include *The Songs of Richard Rodgers* at The Sheldon Concert Hall. Tim is very happy that his 4th grade guitar teacher insisted that he learn to read music. It has come in handy.



JOE SCHOEN is pleased to be musical directing Mustard Seed's first musical. He has performed with the Muny, Goldenrod Showboat, Six Flags-St. Louis, Royal Caribbean Cruise Lines and a number of community theatres in the St. Louis area. Musical and Vocal Direction credits include Royal Caribbean Cruise Line Productions, Fontbonne University, Six Flags-St. Louis as well as countless schools and community theatre productions. Joe is also the director of music for St. Martin de Porres Church in Hazelwood and vocal arranger/director for Sweet Harmony, a professional vocal ensemble in St. Louis.



DEBORAH SHARN is thrilled to be working with Deanna again and such a talented cast! As an actress Deborah has worked with The Black Rep, New Line Theatre, The New Jewish Theatre, Hotcity Theatre, and others. Deborah sings around town weekly with her jazz group, Blue Martini and with the band, The Chaser's Fore, in addition to performing as a soloist at various events. Deborah has sung at The Sheldon, The Savor, and Cookies Jazz Club, and is working on a cabaret show to be performed this spring (www.DeborahSharn.com). It's been such a joyous experience singing this music, thank you for sharing in our joy and for supporting Mustard Seed Theatre.



MICHAEL SULLIVAN is a Mustard Seed Resident Artist and an Associate Professor in the performing arts program at Fontbonne. In addition to being Technical Director, he is also the performing arts program's resident Lighting Designer. Michael built the Kevin Kline Award winning scenery for last year's MST production of *Remnant* and designed the lighting for *Measure for Measure*. Other recent professional credits include lighting designs for *The Romantic Age* and *Ladyhouse Blues* (Act Inc) and carpentry for *Richard III* (Shakespeare Festival St. Louis). Michael sends his love to Jane, his ever understanding wife; and to Mark and Zoe, his ever invigorating teenage children.



JENNIFER M. THEBY is purdy thrilled to be singin' her heart out with such a talented cast. Favorite roles include: Isabella/*Measure for Measure* (Mustard Seed), Dorine/*Tartuffe* (Stray Dog, Kevin Kline Nominee - Outstanding Supporting Actress), Margaret/*Much Ado About Nothing* (Shakespeare Festival St. Louis & St. Louis Shakespeare) and Sweetheart/*Dreamgirls* (The Black Rep). Jennifer studied Theatre and Theology at Saint Louis University, is the brand spankin' new Campus Minister at Visitation Academy (holla ladies!), and teaches acting through COCA. She loves her Ma, Pa, Sisger, James, Geek, and the Crocodile. Swing in Christian Cowboys- and Girls.

JUSTIN WALKER is in his first year at Fontbonne University, having transferred from Meramec College. He has previously worked on *The Big Slam* for Fontbonne and is the Technical Director for his church, Manchester UMC, where he is currently working on *Uncle Phil's Dinner*. Thanks to all his freinds and family for their support.

Biographies



LESLIE WOBBE is a Resident Artist and Box Office Manager for Mustard Seed Theatre and is absolutely thrilled to be on stage with such a fantastic cast. She has worked on and off stage for many years and was last seen as Joan in *The Guys* at West End Players Guild. Thanks so much to Deanna for all the many wonderful opportunities to work with her, and to her boys, Tom, Royal & Ronin.



MOLLY WRIGHT is proud to be a part of this production. She graduated from Indiana University in 2003 with a BA in Theatre and is currently earning her MA in Theatre Education at Fontbonne. Previous production credits include *The Big Slam*, *The Complete Works of William Shakespeare Abridged*, *Sweeney Todd*, *Lysistrata*, *Parade*, *Scapino!*, and *God's Country*. Molly would like to thank her friends and family for their continued love and support, as well as Deanna for this amazing opportunity.



KRISTEN WYLDER has worked with many theatres in St. Louis-including the NonProphet Theater Company, which she co-founded with her husband, Robert Mitchell. She is a proud founding member and Literary Manager of the Slightly Askew Theatre Ensemble and has been twice nominated for a Kevin Kline Award for Best Ensemble (winning for *Women's Minyan*). She is the Box Office Manager for the Cultural Arts Department at the JCC. She is the exceedingly proud mother of Theron and Beth. Thanks to Deanna (for her 5th and soon 6th show with her!) Love to her families. Thank you for choosing to support live theater! As always, for Omni.

Special Thanks

**St. Louis University Music Department
Shakespeare Festival St. Louis
Steve Jent**

The Queen Bean
2944 S. Brentwood Blvd.
“the official coffee stop for Mustard Seed Theatre”

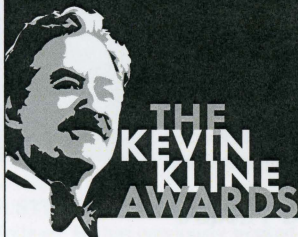
A pew has been named in honor of:

The Royale Food & Spirits
3132 South Kingshighway
for their support of Mustard Seed Theatre

NOW PLAYING

CELEBRATING PROFESSIONAL THEATRE IN ST. LOUIS.

THE PLAYHOUSE AT WESTPORT PLAZA <i>She Loves You</i>	534-1111 October 15 - January 4
MUSTARD SEED THEATRE <i>Smoke On The Mountain</i>	719-8060 October 31 - November 16
THE REPERTORY THEATRE OF ST. LOUIS Off Ramp: <i>The Little Dog Laughed</i> Mainstage: <i>This Wonderful Life</i>	968-4925 November 5 - 30 November 26 - December 28
SOUNDSTAGE PRODUCTIONS <i>Ladies at the Alamo</i>	968-8070 November 6 - 15
THE MIDNIGHT COMPANY <i>Mass Appeal</i>	487-5305 November 6 - 16
ST. LOUIS ACTORS' STUDIO <i>9 Parts of Desire</i>	458-2978 November 7 - 23
WEST END PLAYERS GUILD <i>A Perfect Ganesh</i>	367-0025 November 14 - 23
ST. LOUIS SHAKESPEARE <i>Romeo and Juliet</i>	534-1111 November 14 - 23
HOTCITY THEATRE <i>The Dead Guy</i>	289-4063 November 21 - December 7
THEATRE FOR YOUNG AUDIENCES: PIWACKET THEATRE FOR CHILDREN <i>Hansel and Gretel</i>	963-8800 October 23 - November 15



Please call **531-7529** for more information and visit www.kevinklineawards.org for a current listing of participating theatres and productions.

ST. LOUIS POST-DISPATCH

