

WORKING TOGETHER: *Exploring collaborative opportunities to 'SoTL'*

Panel Presentation, ISSOTL 2021



Angela Carbone, RMIT University, Melbourne, Australia ange.carbone@rmit.edu.au

Dawne Irving-Bell*, Edge Hill University, UK belld@edgehill.ac.uk

Trent Maurer, Georgia Southern University, United States tmaurer@georgiasouthern.edu

Christopher Ostrowdun, University of Calgary, Canada chris.ostrowdun@ucalgary.ca

Carol Rolheiser, University of Toronto, Canada carol.rolheiser@utoronto.ca

Susan Smith, University of Sussex, UK Susan.Smith@sussex.ac.uk

Angela Zito, University of Wisconsin-Madison, United States azito@wisc.edu

Session Outcomes



- share examples of the innovative work the ISSOTL Interest Groups (IG) have carried out or are currently undertaking, thus furthering the dissemination of SoTL best practice
- raise awareness of the IG, encouraging new collaborations and potentially increasing group activity and membership.

Agenda



1. Purpose of Session/Agenda
2. Community Builder: Group Poll
3. Brief Overview of ISSOTL Interest Groups (IG)
4. Breakout Discussion with an IG
5. Next Steps and Final Reflections

Overview of ISSOTL Interest Groups (IG)

Groups with representation within this presentation are highlighted (black font)

- *Advancing Undergraduate Research*
- *Arts & Humanities*
- Decoding the Disciplines
- *General Education*
- History
- Information Literacy
- Multinational Teaching Fellowships
- Pedagogy and Research for Online and Blending Teaching and Learning
- Problem-Based Learning
- *Scholarship of Leading*
- Sociology
- *Student Engagement & Co-Inquiry*

View and visit the groups for yourself here: <https://issotl.com/interest-groups/>



GROUP POLL

Poll Questions

Questions for Participants:

- 1) What IG are you involved or interested in?
- 2) What do you most want to get out of your engagement in an IG?

An Overview of ISSOTL Interest Groups (IG)

On the next few slides, we offer an insight into the work of a handful of Interest Groups ...

- The Scholarship of Leading
- Arts and Humanities
- Advancing Undergraduate Research
- General Education
- Student Engagement & Co-Inquiry

THE SCHOLARSHIP OF



CAROL ROLHEISER & ANGELA CARBONE
Scholarship of Leading (SoL)

SoL Co-leads (2016-2021) – what led us to co-lead?

CAROL ROLHEISER
University of
Toronto, Canada



ANGELA CARBONE
RMIT University,
Australia

SoL Interest Group Activities



- 1** **2016-2017:** Surveyed a total of 161 members of the IG (47 recorded responses, including 38 completed responses – analyzed and reported the findings at the 2017 ISSOTL Conference SoL IG breakfast meeting in Calgary, Alberta
- 2** **2018:** Presented mini-case examples and template using a 5-Pillar Leadership Model – Conducted a SoL IG breakfast meeting at the ISSOTL conference in Bergen, Norway and sent out a Call for Proposals for mini-cases
- 3** **2019:** Published an edited book with 21 mini-cases from North America and Asia Pacific – conducted an IG workshop at the ISSOTL conference in Atlanta, Georgia
- 4** **2020:** Submitted a workshop proposal for the ISSOTL conference, Perth, Australia

Arts & Humanities

IG Lead: Angela Zito

Advancing Undergraduate Research [AUR] IG

Purpose: Focus on connections between/opportunities for AUR and SoTL

Recent work:

- Since 2015, provide a list of ISSOTL Conference sessions related to AUR
- 2017 co-facilitated ISSOTL pre-conference workshop with the Council on Undergraduate Research (CUR-USA)

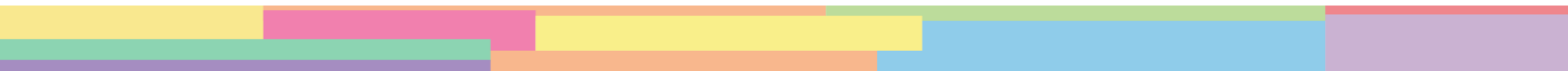
Future plans: Time to explore new connections and opportunities; this group is ready to grow and go!

Contact: Trent Maurer, Georgia Southern University (USA), tmaurer@georgiasouthern.edu



General Education

IG Leads: Dr Susan Smith and Dr Dawne Irving-Bell



General Education

Are you someone who is involved in planning, teaching, or assessing curricula for your institution's general education program or core curriculum?

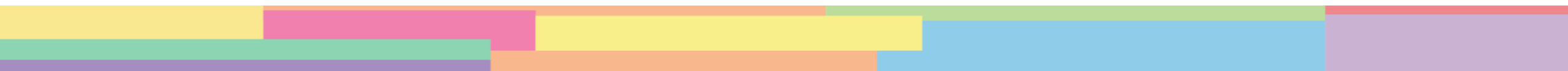
Are you responsible for the development of faculty/staff instructors? To better advance SoTL within institutions and across higher education, SoTL in general education programs must be explored further. We are seeking members interested in exploring the role of SoTL in general education and core curricula.

Please contact:

Susan Smith susan.smith@sussex.ac.uk

Dawne Irving-Bell belld@edgehill.ac.uk

Visit: <https://issotl.com/general-education/> to join us!



Student Engagement & Co-Inquiry

This ISSOTL Interest Group on Student Engagement & Co-Inquiry serves as an international, interdisciplinary network for ISSOTL members who are committed to pursuing SoTL projects on the topic of student engagement. This group offers opportunities for dialogue, encourages and promotes scholarly research on the topic, and provides support to ISSOTL members interested in student engagement and co-inquiry.

Some of our goals:

- Promote and raise visibility of student roles, work, and activities in the society
- Create more explicit spaces and opportunities for students to take an active role in the society
- Disseminate resources and facilitate dialogue around international student engagement activities and work through social media, the ISSOTL newsletter, and the ISSOTL website

(Co-)Chair position currently vacant—please apply!

Contact:

Chris Ostrowdun, costrowdun@mtroyal.ca

Visit: <https://issotl.com/student-engagement-co-inquiry/> to join us!

Overview of ISSOTL Interest Groups (IG)

In a moment you will be able to 'join' and work with a specific IG or choose to stay in the main room to discuss IGs in a more general way.

Here is a reminder of the current IGs and those with colleagues here (highlighted in black font) to help your selection:

- **Advancing Undergraduate Research**
- **Arts & Humanities**
- **Decoding the Disciplines**
- **General Education (Dawne and Susan)**
- **History**
- **Information Literacy**
- **Multinational Teaching Fellowships**
- **Pedagogy and Research for Online and Blending Teaching and Learning**
- **Problem-Based Learning**
- **Scholarship of Leading (Carol and Ange)**
- **Sociology**
- **Student Engagement & Co-Inquiry (Chris)**

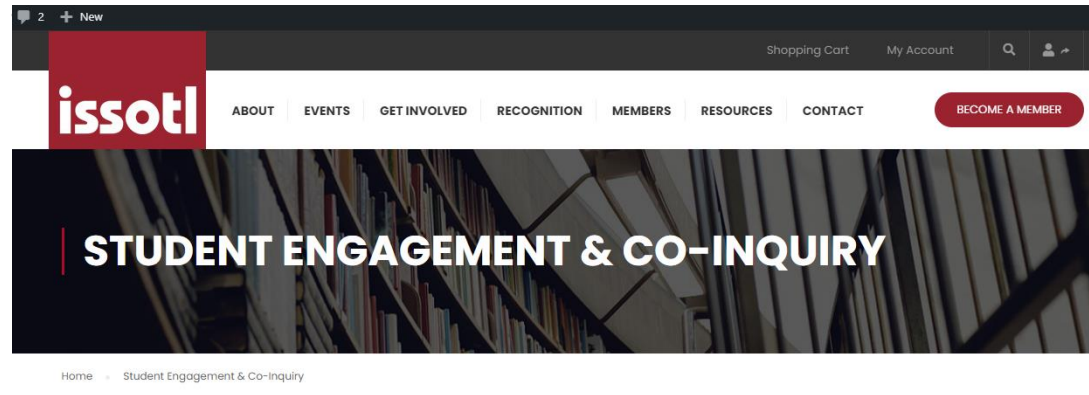


Interest Group BREAKOUT SESSIONS

20 mins

- Visit the ISSOTL web page: <https://issotl.com/interest-groups/>

- Click on any group that interests you to find out more.
- If you would like to join, simply click the burgundy button!
- For more information please also email the IG lead(s)



STUDENT ENGAGEMENT & CO-INQUIRY

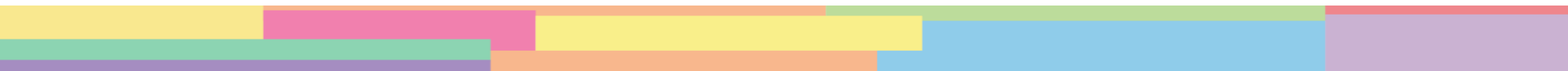
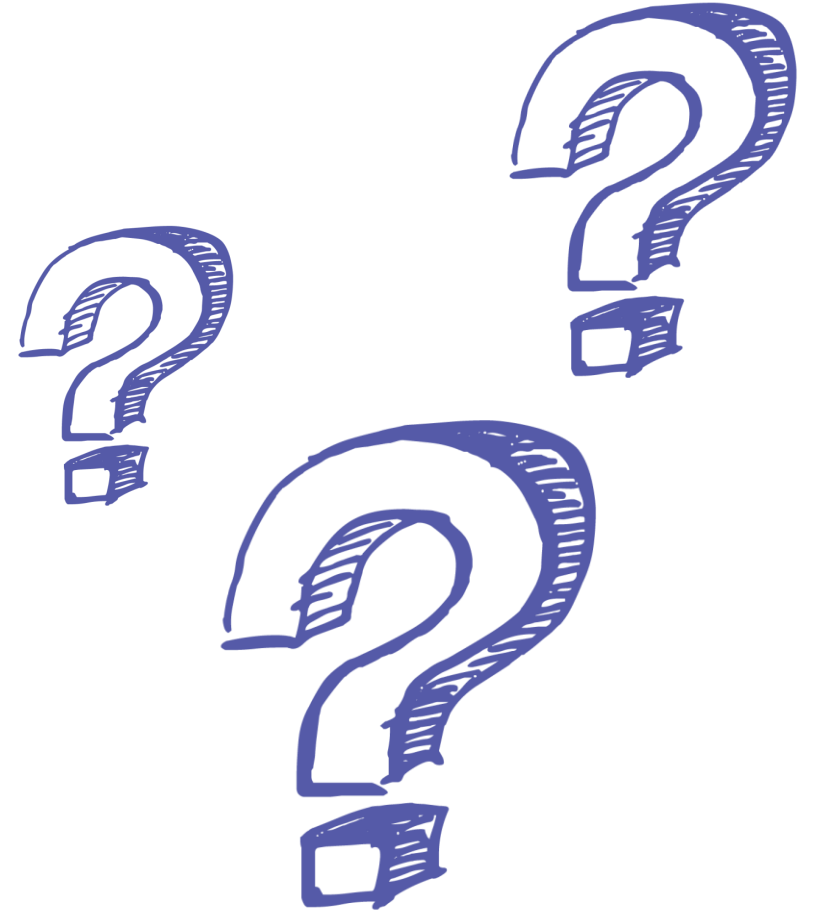
JOIN THE STUDENT ENGAGEMENT & CO-INQUIRY GROUP

This ISSOTL Interest Group on Student Engagement & Co-Inquiry serves as an international, interdisciplinary network for ISSOTL members who are committed to pursuing SoTL projects on the topic of student engagement. This group offers opportunities for dialogue, encourages and promotes scholarly research on the topic, and provides support to ISSOTL members interested in student engagement and co-inquiry.

To learn more, please contact the Chair: Chris Ostrowdun (formerly Ostrowski) (cpostrow@ucalgary.ca).

How to get involved

Any questions?



***Thank You
for your time!***



Angela Carbone, RMIT University, Melbourne, Australia ange.carbone@rmit.edu.au
Dawne Irving-Bell*, Edge Hill University, UK belld@edgehill.ac.uk
Trent Maurer, Georgia Southern University, United States tmaurer@georgiasouthern.edu
Christopher Ostrowdun, University of Calgary, Canada chris.ostrowdun@ucalgary.ca
Carol Rolheiser, University of Toronto, Canada carol.rolheiser@utoronto.ca
Susan Smith, University of Sussex, UK Susan.Smith@sussex.ac.uk
Angela Zito, University of Wisconsin-Madison, United States azito@wisc.edu