

Stochastic S-system Modeling of Gene Regulatory Network

Ahsan Raja Chowdhury^{1,3}, Madhu Chetty¹, and Rob Evans²

¹School of Engineering and Information Technology, Federation University Australia

²Dept. of Electrical and Electronics Engineering, University of Melbourne, Australia

³Dept. of Computer Science and Engineering, University of Dhaka, Bangladesh
{farhan717}@cse.univdhaka.edu/gmail.com, madhu.chetty@federation.edu.au,
robinje@unimelb.edu.au

Abstract. Microarray gene expression data can provide insights into biological processes at a system-wide level and is commonly used for reverse engineering Gene Regulatory Networks (GRN). Due to the amalgamation of noise from different sources, microarray expression profiles become inherently noisy leading to significant impact on the GRN reconstruction process. Microarray replicates (both biological and technical), generated to increase the reliability of data obtained under noisy conditions, have limited influence in enhancing the accuracy of reconstruction. Therefore, instead of the conventional GRN modeling approaches which are deterministic, stochastic techniques are becoming increasingly necessary for inferring GRN from noisy microarray data. In this paper, we propose a new stochastic GRN model by investigating incorporation of various standard noise measurements in the deterministic S-system model. Experimental evaluations performed for varying sizes of synthetic network, representing different stochastic processes, demonstrate the effect of noise on the accuracy of genetic network modeling and the significance of stochastic modeling for GRN reconstruction. The proposed stochastic model is subsequently applied to infer the regulations among genes in two real life networks: i) the well-studied IRMA network, a real-life in-vivo synthetic network constructed within the *Saccharomyces cerevisiae* yeast, and ii) the SOS DNA repair network in *Escherichia coli*.

Keywords: Stochastic Model, Deterministic Model, S-system.

1 Introduction

Recent advancements in microarray technology have generated a huge amount of gene expression data allowing analysis of genetic interactions during different cellular processes. Although expression profiles are being applied in various applications, e.g., drug design, its application for reconstruction of Gene Regulatory Network (GRN) is still considered as a critical and challenging problem in systems biology [9]. Although GRN modeling considers gene expression and regulation as deterministic, a number of experimental substantiations [1, 2, 38] point

out the presence of stochastic fluctuations in these processes in both prokaryotic and eukaryotic cells. The microarray data shows unpredictable variations, which are often ascribed to causes that are either biological or technical, or both. While the biological variations mainly reflect the changes in mRNA levels, the key reasons for technical variations include sampling, labeling, and hybridization [30]. According to Rocke and Durbin [25], the variations can be in the range 20–30% of the original expression value. Hence, it is imperative to account for this noise for accurate inference of GRNs.

As it is well known, in any biological network, there are two sources of noise, internal and external, which are also commonly known as intrinsic and extrinsic noise, respectively [8, 10]. The internal noise occurs from the biological reactions in the system, which is due to small copy number of a few key molecular species. The noise propagation from biological pathways or environmental fluctuations leads to external noise. Apart from these two sources of noise, measurement errors are also treated as noise [34]. Signal processing techniques [37], often applied for analyzing biological systems, are very sensitive to environmental fluctuations and/or the unpredictable intrinsic noise occurring in certain time periods. During the modeling, we have considered three different types of noise (in five different ways) in the proposed Stochastic S-system Modeling. Although, the first and the simplistic noise, namely the additive noise, have no physical meaning with respect to GRNs, it essentially mimics the effect of nature’s random processes. The multiplicative noise, on the other hand, models the external noise that gets imposed on GRN. Since noise is widely used to test the concentration of a gene product, we have evaluated the performance of Stochastic S-system modeling with multiplicative noise both in genes’ production and degradation. Finally, Langevin noise is used to model the internal noise of a network, where this noise can occur because of small copy number of a few key molecular species. Similar to testing the proposed stochastic model with multiplicative noise, the model is also studied with Langevin noise in both production and degradation mode. After careful observation of the impact of these 5 types of noises, we propose a new modeling approach having composite noise terms in it, which is capable of dealing both internal and external noise of a GRN.

The GRN models, based on current state-of-the-art deterministic approaches, are unable to cater to the inherent stochasticity present in microarray data, thereby underscoring the need for a suitable stochastic model incorporating the randomness in the process. Such models have additional term(s) of noise or probability distribution along with the regular deterministic term. For GRN modeling, Probabilistic Boolean Network [29] is considered as a common example of a discrete stochastic model. Recently, stochastic modeling of GRN was also carried out using Boolean models [11, 12], Petri nets [14, 15] or other modeling techniques [32, 33, 36, 40]. Further, probabilistic hybrid approaches [13] and multi-scale hybrid models [16, 24], that include both stochastic and deterministic dynamics, have also been proposed. Recent GRN approaches deal with either stability of the network or stochastic delayed regulations or both [17, 20, 39]. However, the aforementioned methods, due to using non-differential equation

models, fail to completely capture the changing behavior of expression profiles. Hence, ordinary differential equations (ODEs) are essential when continuously varying quantities and their changing characteristics over time must be captured. The ODE models show promise in reconstructing GRNs from continuous time-expression profiles [4–7, 18, 27]. Recently, stochastic differential equations [32, 33] have been applied for capturing system dynamics. Tian and Burrage [32, 33] developed a stochastic modeling technique based on the following ordinary differential equation describing the dynamics of gene transcript:

$$\frac{dI}{dT} = a + bf(t) - KI \quad (1)$$

The above stochastic modeling emphasizes the regulations only in production and fails to capture regulation in the degradation. Using the non-linear S-system model, we can represent regulations both in the production and degradation phases. However, the traditional S-system model is deterministic and fails to cope with noisy microarray data. This paper proposes new stochastic S-system model and investigates the effect of different types of noise, e.g., additive, multiplicative, Langevin, in a widely used deterministic S-system model. Both synthetic and real life networks are considered.

The remainder of this paper is organized as follows: Section 2 highlights the proposed stochastic S-system models along with the modified numerical integration. In Section 3, the performance of the proposed model is evaluated using various synthetic and real networks. Section 4 concludes the paper.

2 Stochastic Modeling of Gene Regulatory Network

2.1 The Model

GRN modeling is considered as a non-linear identification problem with the presence of numerous interacting genes in the network [3, 19]. A promising non-linear model, the S-system model [27] is capable of capturing the dynamics of various complex regulations. While the S-system is able to represent both the production and the degradation phases, it is still a deterministic model and unable to capture the stochasticity of a real GRN. In this paper, we propose a novel stochastic S-system model capable of realistically modeling the noisy variations observed in measured time series data.

Before introducing the stochastic S-system model, we briefly discuss the deterministic S-system model. The S-system approach, proposed by Savageau [27], is well-known for modeling biochemical networks and has attracted significant attention in the past decade [18, 21, 35]. Considering N as the number of genes in a network, the S-system model can be described by the following equation:

$$\frac{d}{dt} X_i = \alpha_i \prod_{j=1}^N X_j^{g_{ij}} - \beta_i \prod_{j=1}^N X_j^{h_{ij}}, \quad i = 1 \dots N \quad (2)$$

where, X_i is the expression level of the i^{th} gene. Two non-negative parameters α_i , β_i are called rate constants and real-valued exponents g_{ij} , h_{ij} are referred to as kinetic orders. The typical values of rate constants and kinetic order parameters range from 0 to 20 and -3.00 to 3.00, respectively. The term $\alpha_i \prod X_j^{g_{ij}}$ models the process of RNA *production*, while the term $\beta_i \prod X_j^{h_{ij}}$ models the process of RNA *degradation*. In production, a positive value of g_{ij} implies the activation from Gene- j to Gene- i , while a negative value of g_{ij} indicates the inhibition from Gene- j to Gene- i . On the other hand, in the degradation phase, suppression and inhibition on Gene- i from Gene- j are indicated with negative and positive values of h_{ij} , respectively. If $g_{ij} = 0$ ($h_{ij} = 0$), it implies that there is no activation (inhibition) from Gene- j to Gene- i . For the canonical S-system model, as shown in Eqn. (2), where all N genes are considered at the same time for modeling, the set of parameters that defines the model is given by $\theta = \{\alpha, \beta, g, h\}$. Thus, to infer a GRN of N genes using the S-system model, $2 \times N(N + 1)$ parameters must be estimated. However, Maki et al. [21] proposed the following de-coupled S-system model by decomposing the canonical system into smaller problems:

$$\frac{d}{dt} X_i = \alpha_i \prod_{j=1}^N Y_j^{g_{ij}} - \beta_i \prod_{j=1}^N Y_j^{h_{ij}}, \quad i = 1 \dots N \quad (3)$$

For solving Eqn. (3), $Y_{i=j}$ is obtained by numerical integration, whereas $Y_{i \neq j}$ is obtained by pre-calculations directly via observed times-series data. Although the accuracy may decrease due to direct estimation rather than numerical calculation, decoupling greatly reduces the computational burden. In the rest of this paper, we denote this model (Eqn. (3)) as DSS (Deterministic S-system).

We now write the stochastic differential equations with generalized term [28] in the following equation:

$$\frac{d}{dt} X_i = f_i(X, u, t) + \mu g(X_i) \zeta_i(t) \quad (4)$$

Here, f_i represents the deterministic differential equations to model genetic interactions and $\mu g(X_i) \zeta_i(t)$ represents its stochastic part. The stochastic part contains three terms: μ represents noise strength, $g(X_i)$ is the contribution of signal fluctuation, and $\zeta_i(t)$ is Gaussian white noise with zero mean and unit variance. Tian [31] considered ζ as a Weiner process $W(t)$ with increment $\Delta W(t) = W(t + \Delta) - W(t) \sim N(0, t)$ as a Gaussian random variable. We consider Eqn. (2) as the deterministic function for Eqn. (4) and form the generalized Stochastic S-system Model as follows:

$$\frac{d}{dt} X_i = \left[\alpha_i \prod_{j=1}^N X_j^{g_{ij}} - \beta_i \prod_{j=1}^N X_j^{h_{ij}} \right] + \mu g(X_i) \zeta_i(t), \quad i = 1 \dots N \quad (5)$$

While considering only the additive noise, the stochastic model, denoted by SSS^a, is as follows

$$\frac{d}{dt}X_i = \left[\alpha_i \prod_{j=1}^N X_j^{g_{ij}} - \beta_i \prod_{j=1}^N X_j^{h_{ij}} \right] + \mu \zeta_i(t), \quad i = 1 \dots N \quad (6)$$

where, $g(X_i)=1$ in Eqn. (4). We note that, integral of a white noise is Brownian motion that produces Brownian noise. The key reason of selecting the additive noise (Wiener process) in the new modeling approach is to imitate the effect of nature's random processes. However, we also evaluated the stochasticity with multiplicative noise and Langevin noise, and later, proposed stochastic S-system model having hybrid noise terms with deterministic S-system equation.

It may be noted that, both the production and degradation processes can contribute towards noise and $g(X_i)$ can be considered as originating from either production or degradation, or both. For ease of understanding, we define $\rho(X_i)$ and $\varrho(X_i)$ as the noise contributions in production and degradation, respectively:

$$\begin{aligned} \rho(X_i) &= \alpha_i \prod_{j=1}^N X_j^{g_{ij}} \\ \varrho(X_i) &= \beta_i \prod_{j=1}^N X_j^{h_{ij}} \end{aligned} \quad (7)$$

The stochastic S-system model with multiplicative noise and Langevin noise in production, denoted as SSS^{mT} and SSS^{LT}, can be expressed by the following Eqn. (8) and Eqn. (9), respectively:

$$\frac{d}{dt}X_i = \left[\alpha_i \prod_{j=1}^N X_j^{g_{ij}} - \beta_i \prod_{j=1}^N X_j^{h_{ij}} \right] + \mu \rho(X_i) \zeta_i(t), \quad i = 1 \dots N \quad (8)$$

$$\frac{d}{dt}X_i = \left[\alpha_i \prod_{j=1}^N X_j^{g_{ij}} - \beta_i \prod_{j=1}^N X_j^{h_{ij}} \right] + \mu \sqrt{\rho(X_i)} \zeta_i(t), \quad i = 1 \dots N \quad (9)$$

In most of the existing approaches for GRN modeling, stochastic components are usually additive noise or degradation process. Here, we consider the stochastic S-system model with transcription process in terms of multiplicative and Langevin noise:

$$\frac{d}{dt}X_i = \left[\alpha_i \prod_{j=1}^N X_j^{g_{ij}} - \beta_i \prod_{j=1}^N X_j^{h_{ij}} \right] + \mu \varrho(X_i) \zeta_i(t), \quad i = 1 \dots N \quad (10)$$

$$\frac{d}{dt}X_i = \left[\alpha_i \prod_{j=1}^N X_j^{g_{ij}} - \beta_i \prod_{j=1}^N X_j^{h_{ij}} \right] + \mu \sqrt{\varrho(X_i)} \zeta_i(t), \quad i = 1 \dots N \quad (11)$$

We denote the above two models as SSS^{mD} and $\text{SSS}^{\text{mT+LD}}$, respectively. The aforementioned five stochastic S-system equations incorporate the noise either from production or from degradation or none. Similar to Tian [30], we also consider the stochastic S-system model with multiple (two) noise terms, denoted $\text{SSS}^{\text{mT+LD}}$, according to the following equation:

$$\frac{d}{dt}X_i = \left[\alpha_i \prod_{j=1}^N X_j^{g_{ij}} - \beta_i \prod_{j=1}^N X_j^{h_{ij}} \right] + \mu_1 \varrho(X_i) \zeta_i(t) + \mu_2 \sqrt{\rho(X_i)} \zeta_i(t), \quad i = 1 \dots N \quad (12)$$

The above equation takes account of noise from both production and degradation. However, the choice of multiplicative noise in production and Langevin noise in degradation is based on the empirical experimental observation that we performed on various GRNs.

2.2 Numerical Integration with Stochastic S-system Model

Due to the additional stochastic term in the model equations (Eqns. (6), (8)-(11)), the stochastic S-system (SSS) model defined in the previous section requires additional parameters to be inferred compared to the traditional S-system model due to the additional stochastic term in the model equations. In order to understand the enhancements necessary for numerical integration for the SSS model, let us first consider the generalized equation of the SSS (Eqn. (4)). Although Eqn. (4) can be solved by numerical integration using any standard techniques, such as Runge-Kutta fourth order equation (RK4), it requires multiple Gaussian white noise to be generated for single t . To illustrate, let us consider the four component equations of standard RK4 to calculate numerical integration at the t^{th} time:

$$\begin{aligned} k_1 &= f(t, X) \\ k_2 &= f\left(t + \frac{h}{2}, X + \frac{h}{2}k_1\right) \\ k_3 &= f\left(t + \frac{h}{2}, X + \frac{h}{2}k_2\right) \\ k_4 &= f(t + h, X + hk_3) \end{aligned} \quad (13)$$

where $h > 0$ is the step size. We observe that, evaluation of the function $f(t, X)$ is required at three different internal time-stamps (i.e., t , $(t + \frac{h}{2})$, and $(t + h)$) between two consecutive t values (i.e., t_n and t_{n+1}). Since, $t_{n+1} = t_n + h$, we can safely assume two different internal time-stamps, i.e., t and $t + \frac{h}{2}$, other than the final t (i.e., t_T). Hence, the numerical integration requires *two* different noise values for each t . However, since a typical h value is extremely small, our proposed model can safely assume that the noise at t and $t + \frac{h}{2}$ are the same. To keep the simulation simple, we also consider, in a particular time-stamp t , the same noise value will have an effect on the concentrations of all N genes.

Although noise affects on certain time-samples, the genes' concentration in the subsequent time-stamps will continue to carry forward the effect of noise affected concentrations. Rather than considering the occurrences of random noise,

we assume that the noise appears in a particular window frame of single dimension $[t_s, t_e]$ with $t_0 \leq t_s \leq t_e \leq t_T$, where t_s and t_e , respectively represent the start and end time-stamp of the noise window, while t_0 and t_T represent the start and end time-stamp of the microarray. The situation, for a single time-series data, is shown in Figure 1. Since, the biological noise can appear only in certain samples, we assume that $(t_e - t_s) \leq \max_t$, where \max_t is the maximum size of the window.

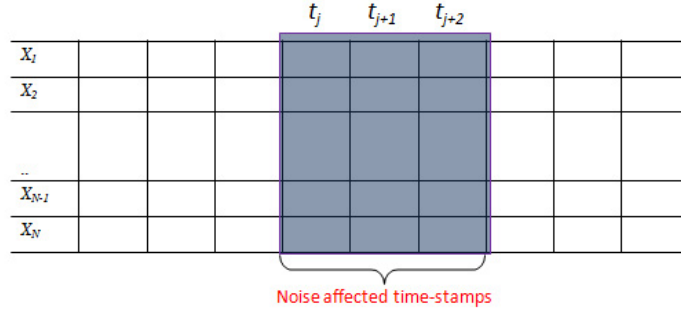


Fig. 1. Noisy Microarray

However, any meaningful conclusion about complex dynamics cannot be derived using a single set of time-course data; multiple time-course data set are often considered. Hence, for K different data sets, we consider K different single dimensional window frames for noise to appear. Thus, we define the following noise matrix:

$$NS = \begin{pmatrix} NS_{1,t_s} & NS_{1,t_{s+1}} & \cdots & NS_{1,t_e} \\ NS_{2,t_s} & NS_{2,t_{s+1}} & \cdots & NS_{2,t_e} \\ \vdots & \vdots & \ddots & \vdots \\ NS_{K,t_s} & NS_{K,t_{s+1}} & \cdots & NS_{K,t_e} \end{pmatrix} \quad (14)$$

where $NS_{p,q}$ is Gaussian white noise with zero mean and unit variance at the q^{th} time-stamp in the p^{th} data set.

2.3 Inference Mechanism

In order to evaluate the performance of the proposed Stochastic S-system model, we have used our previously developed optimization technique REGARD (Reverse Engineering GRN with Adaptive Regulatory-genes-cardinality) [5]. Both the stochastic and deterministic S-system models are tested with this REGARD algorithm. REGARD was developed in [5] based on Trigonometric Differential Evolution algorithm incorporating various sub-modules for appropriate inference of the GRNs. It starts with an improved initialization algorithm that includes the

knowledge of cardinality in the initial seeds. After that, evolution is performed with trigonometric mutation and cross-over operations. During the evolution, our proposed cardinality-based fitness criteria is invoked along with the Adaptive-regulatory-Genes Cardinality (ARGC) algorithm that adapts the cardinality values based on a probabilistic criteria. We also used a local-search search technique that fine-tunes best 10% solutions in every iteration. When maximum number of iterations are completed, the candidate solutions go through our proposed multi-stage refinement algorithm that further fine-tunes the candidate solutions and finds single candidate solution. The steps of the REGARD algorithm is shown in Fig. 2.

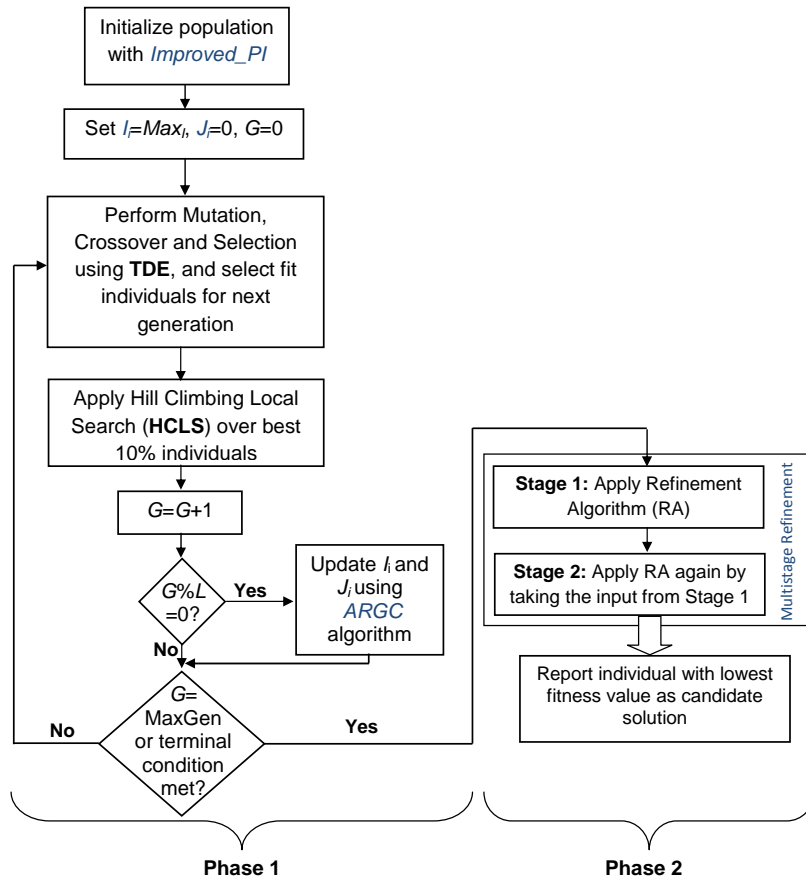


Fig. 2. Flow-chart of our previously proposed optimization algorithm ‘Reverse Engineering GRN with Adaptive-regulatory-Genes Cardinality (REGARD)’ (L in the flow-chart denotes the update interval for I_i/J_i with ARGC algorithm)

3 Experimental Results and Discussions

The evaluation of various stochastic S-system models proposed has been performed on GRNs of different sizes: both synthetic and real-life networks. For synthetic networks, we have considered 2 network sizes and for real life networks we again consider two networks: IRMA network in yeast and SOS DNA repair network in *E. coli*. First, we generate expression profiles using the newly proposed stochastic S-system model for the well-studied 5-gene and 20-gene networks [18, 22]. Then, the two synthetic networks and two other real-life GRNs are inferred with the proposed SSS model.

For our experiments, we consider a 5-gene synthetic network, first used by Kikuchi et al. [18] and commonly employed for many S-system model based reverse engineering of GRNs. The schematic diagram is shown in Figure 3(a). Based on the network Figure 3(a), Kikuchi et al. designed a GRN with 13 regulations, shown in Figure 3(b), with the corresponding S-system parameters of Table 1. According to Kikuchi et al. [18], this is a typical regulatory system with gene interaction centering on two genes (genes 1 and 4). X_1 is the mRNA produced from gene 1, X_2 is an enzyme protein gene 2 produces, and X_3 is an inducer protein catalyzed by X_2 . X_4 is an mRNA produced from gene 4 and X_5 is a regulator protein produced by gene 5. Positive feedback from the inducer protein X_3 and negative feedback from the regulator protein X_5 are assumed in the mRNA production processes of genes 1 and 4. This model has been developed to analyze the interaction of regulator and effector genes.

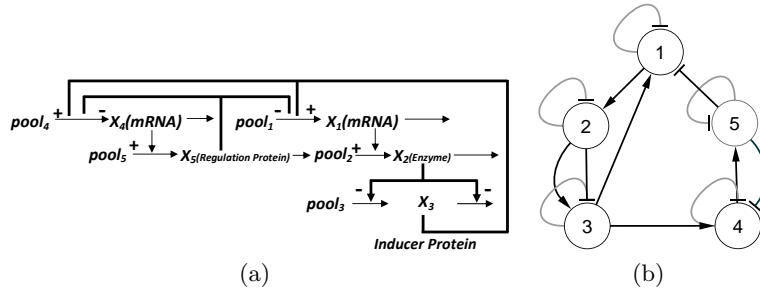


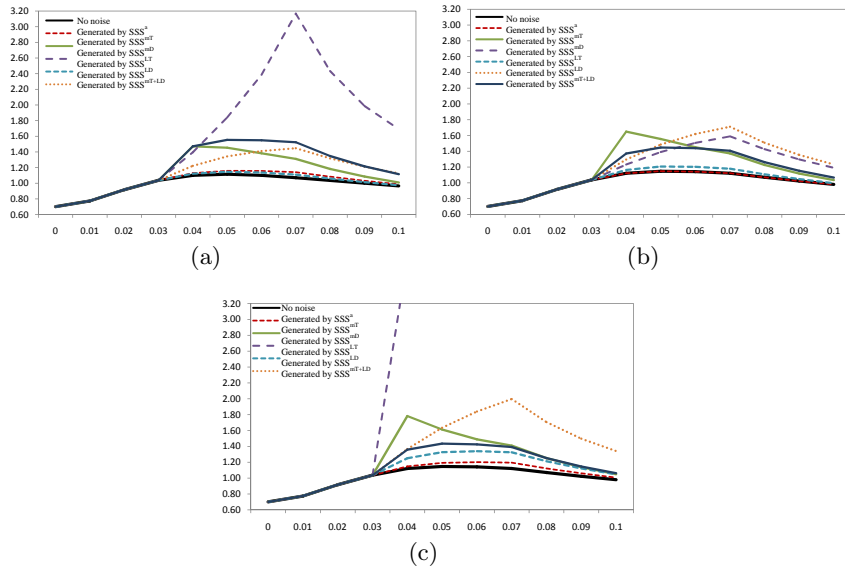
Fig. 3. (a) A GRN of 5 genes (b) Corresponding graphical representation of the GRN, (Black and grey colored regulations represent interactions in production phase and degradation phase, respectively, arrow and block ended regulations represent activation and suppression, respectively)

From the S-system parameters of the network (Table 1), we generated 10 datasets from 10 random initial conditions using deterministic S-system model (i.e., DSS or Eqn. (2)) and proposed Stochastic S-system models (SSS) of various types of noises (Eqns. (6), (8)-(12)). In addition, we have analyzed the effect of noise terms in the expression profiles for different levels of noise strengths (i.e.,

Table 1. S-system parameters for 5-gene synthetic network

i	α_i	$g_{i,1}$	$g_{i,2}$	$g_{i,3}$	$g_{i,4}$	$g_{i,5}$	β_i	$h_{i,1}$	$h_{i,2}$	$h_{i,3}$	$h_{i,4}$	$h_{i,5}$
1	5.00	0.00	0.00	1.00	0.00	-1.00	10.00	2.00	0.00	0.00	0.00	0.00
2	10.00	2.00	0.00	0.00	0.00	0.00	10.00	0.00	2.00	0.00	0.00	0.00
3	10.00	0.00	-1.00	0.00	0.00	0.00	10.00	0.00	-1.00	2.00	0.00	0.00
4	8.00	0.00	0.00	2.00	0.00	-1.00	10.00	0.00	0.00	0.00	2.00	0.00
5	10.00	0.00	0.00	0.00	2.00	0.00	10.00	0.00	0.00	0.00	0.00	2.00

$\mu=10, 15, 20$). The expression profiles for a randomly selected gene (Gene-1) of single data set for all three noise strength values are shown in Figure 4. While analyzing the effect of various noises, we observe that effects of additive noise in the expression profiles are very small for any noise strength. On the other hand, an abrupt effect in expression profiles is observed for multiplicative noise in degradation, while significant regular changes are observed for the Langevin noise in production. The remaining noise types cause irregular changes in the expression profiles. Furthermore, we note that their expression profiles exhibit little or no variation and remain close to the original values for $\mu = 10$, whereas massive fluctuations are noted for $\mu = 20$. Thus, the parameter for noise strength is set to 15 (i.e., $\mu = 15$) in all the experiments.

**Fig. 4.** Expression profiles of Gene-1 for different noise strength values (a) $\mu=10$, (b) $\mu=15$, (c) $\mu=20$

For inferring a network from microarray time-series data, our previously proposed REGARD (Reverse Engineering GRN with Adaptive Regulatory Genes' Cardinality) method [5] is used for learning the parameters of the stochastic model, i.e., SSS. The start and end point of noise window is implemented from 3rd till 6th time-stamp for all experiments. The noise matrix is initialized prior to the inference using zero mean unit variance Gaussian white noise.

3.1 5-Genes Synthetic Network

As mentioned earlier, for the 5-gene network, we used the expression profiles generated using the proposed stochastic S-system model with multiplicative noise in production (Eqn. (10)). However, for validation all the proposed stochastic models are applied separately to the data. The sensitivity-specificity plots are shown in Figure 5(a) in terms of ROC plots. Since the data is generated with SSS^{mT} model, inference with SSS^{mT} model exhibits the best performance among all models, other than SSS^{mT+LD}. The proposed stochastic model SSS^{mT+LD} is also robust and able to cope with the data generated with a different model (i.e., SSS^{mT}). Further, we observe that the precision and F-score for SSS^{mT+LD} and SSS^{mT} are best among all SSS models. Figure 6 shows the plot of absolute error between two rate constant values (i.e., α and β) calculated using the equation $|Rc_{T,i} - Rc_{I,i}|$, where $Rc_{T,i}/Rc_{I,i}$ indicate the i^{th} rate constant in target network and inferred network, respectively. Furthermore, average error is calculated as follows:

$$AE = \frac{1}{|Params|} \sum_{i=1}^{|Params|} |d_{T,i} - d_{I,i}| \quad (15)$$

Here, $d_{T,i}/d_{I,i}$ are the i^{th} parameter values for Target/ Inferred network, $|Params|$ indicates the total number of parameter of a particular category. For example, while calculating the average error for rate constant values, $|Params| = 2 \times N$, for kinetic orders values $|Params| = 2 \times N \times N$, and $|Params| = 2 \times N(N + 1)$ while all S-system parameters are considered. A comparison of errors for inferring model parameters between deterministic S-system model and proposed SSS^{mT+LD}, shown in Figure 6, clearly indicates the superiority of the proposed stochastic modeling over the deterministic models.

Finally, the error between inferred and target expression profile in Figure 7 shows that the magnitude of the error bars to be very small indicating near-overlap of the two expression profiles. The performance of the proposed SSS^{mT+LD} is on a par with the SSS^{mT} model while inferring the 5-gene network and robust enough to withstand the presence of noise in the expression profiles generated by SSS^{mT} model.

3.2 20-gene Network

The effectiveness of the proposed stochastic model is further evaluated with a 20-gene synthetic network. This 20-gene network, shown in Figure 8, is a as

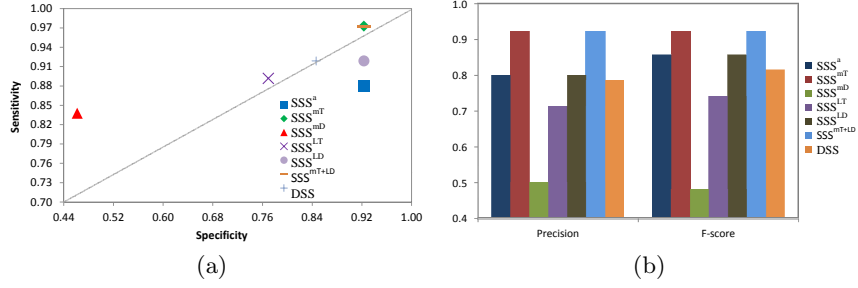


Fig. 5. (a) ROC points (b) Precision and F-score for the proposed stochastic models and existing DSS

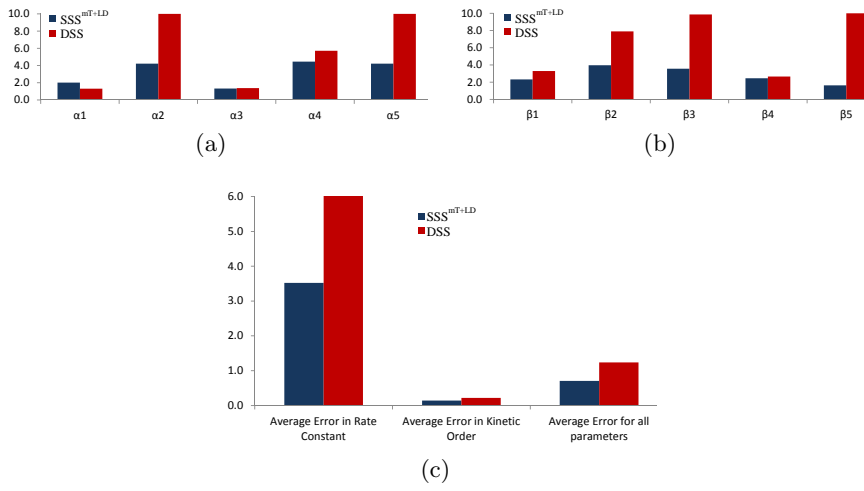


Fig. 6. Error for (a) α values (b) β values and (c) Average errors calculated for inferred parameters with SSS^{mT+LD}

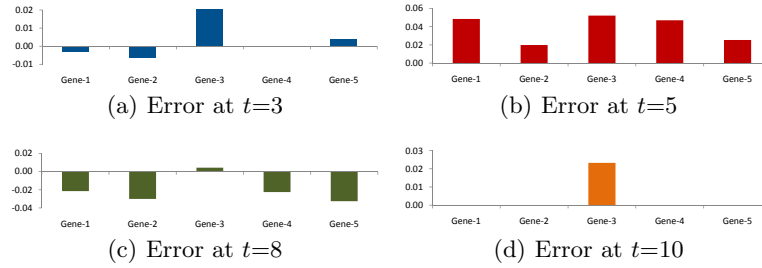


Fig. 7. Error at various time-stamps

medium-scale network and has been frequently used to test model performance

[5,7,22]. For this network, we again generate 10 data sets from 10 different initial conditions using SSS^{mT} (Eqn. (10)). The evaluation of SSS^{mT+LD} for inferring the 20-gene network, using the existing REGARD [5], is shown in Table 2, and indicates that the proposed method with SSS^{mT+LD} is successful in inferring more regulations and non-regulations than the deterministic S-system model. The absolute errors with target expression profiles for proposed and existing methods are shown in Figure 9 for three randomly selected genes. We observe that, although the errors for the proposed SSS^{mT+LD} are a little higher in the early stages of introducing noise at t_3 , the errors for the proposed method are much smaller compared with the traditional model in the later time-stamp. This indicates that SSS^{mT+LD} has the ability to rapidly adjust with the noise during the optimization process.

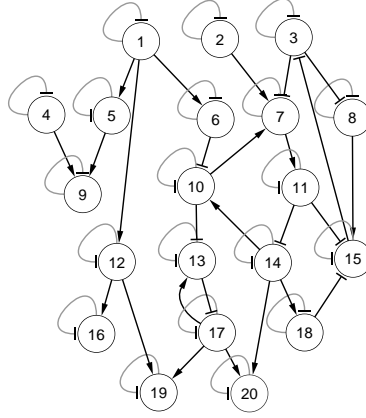


Fig. 8. 20-gene network adapted from Noman and Iba [22]. Arrow and block ended arcs represent activation and suppression, respectively. Black and grey colored arcs indicate instantaneous activation/suppression in production and degradation phases, respectively.

Table 2. Evaluation of SSS^{mT+LD} for inferring 20-gene network

Method	S_n	S_p	P_r	$F - score$
SSS^{mT+LD}	0.53	0.94	0.39	0.45
DSS	0.29	0.95	0.47	0.36

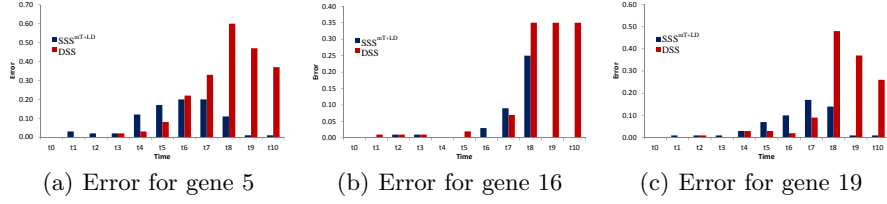


Fig. 9. Error at different time-stamps for three randomly selected genes

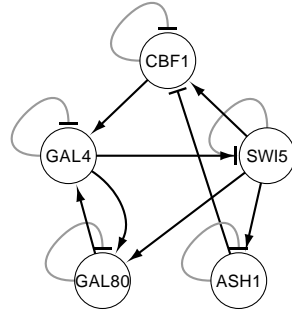
3.3 IRMA Network in Yeast

The proposed stochastic S-system model is next applied to a real-life biological data of *Saccharomyces cerevisiae* (yeast) called IRMA [3]. This is a 5-gene network with the genes *CBF1*, *GAL4*, *SWI5*, *GAL80*, *ASH1*, regulating each other. Cantone et al. [3] provided two sets of gene expression profiles, namely Switch ON and Switch OFF data having 16 and 21 time series data points, respectively. The ON dataset corresponds to the shifting of the growth medium from glucose to galactose, while the OFF data set corresponds to shifting from galactose to glucose. In addition to the true 8 regulations, we also consider N ($=5$) self-regulations as true positives [5, 6]. Figure 10 shows the ratget IRMA network [3] and also the networks inferred by the proposed SSS^{mT+LD} and current deterministic S-system model. Although the true network is not inferred by the the proposed method, the number of inferred true regulations and non-regulations are more than the existing model [5]. Further, the errors for the proposed method are found to be generally lower than the existing methods, as shown in Figure 11 and Figure 12.

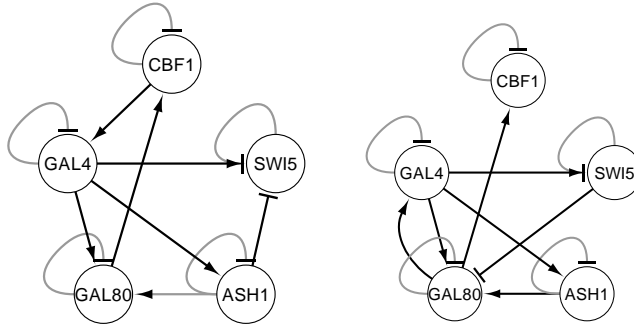
3.4 SOS DNA repair network in *Escherichia coli*

Next, we consider the well-studied SOS DNA repair network within *Escherichia coli* (*E. coli*). While the entire DNA repair system of *E. coli* involves more than 100 genes [23], only 30 of its genes contribute towards key regulations at the transcription level. We use the expression data set from Ronen et al. [26], which contains information about 8 genes, namely *uvrD*, *lexA*, *umuD*, *recA*, *uvrA*, *uvrY*, *rvvA*, and *polB*. The data sets are obtained from four different experiments under various UV light conditions, with the gene expression levels being measured at 50 instants evenly spaced at 6-minute interval. Following [22], we normalize the input data by dividing the expression profile of each gene by its maximum value.

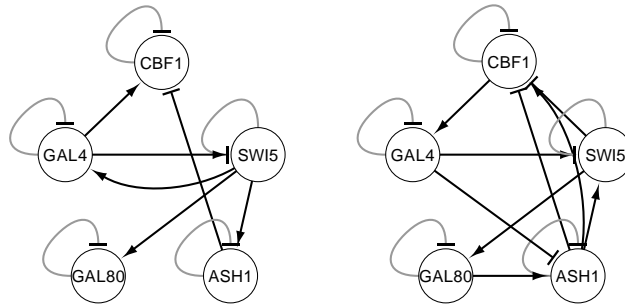
We calculate the four performance metrics, i.e., sensitivity, specificity, precision and F-score, according to i) the functional description of each gene in the original paper [26] and ii) the novel regulations inferred by Perrin et al. [23]. Based on the two above criteria, we reconstruct the target network for SOS DNA repair network as shown in *Escherichia coli* in Figure 13. The evaluation of the proposed SSS^{mT+LD} and existing deterministic S-system modeling approach is shown in Table 3. We observe that in all the four performance metrics, the



(a) IRMA Network (Target)



(b) IRMA Network (inferred by SSS^{mT+LD}) from ON data set (c) IRMA Network (inferred by DSS) from ON data set



(d) IRMA Network (inferred by SSS^{mT+LD}) from OFF data set (e) IRMA Network (inferred by DSS) from OFF data set

Fig. 10. IRMA network (a) Target (b) Inferred with proposed SSS^{mT+LD} from ON data set (c) Inferred with DSS from ON data set (d) Inferred with proposed SSS^{mT+LD} from OFF data set (e) Inferred with DSS from OFF data set. Arrow ended black lines and block ended grey lines indicate instantaneous activation and suppression, respectively

proposed SSS^{mT+LD} outperformed the existing method. Since, the expression

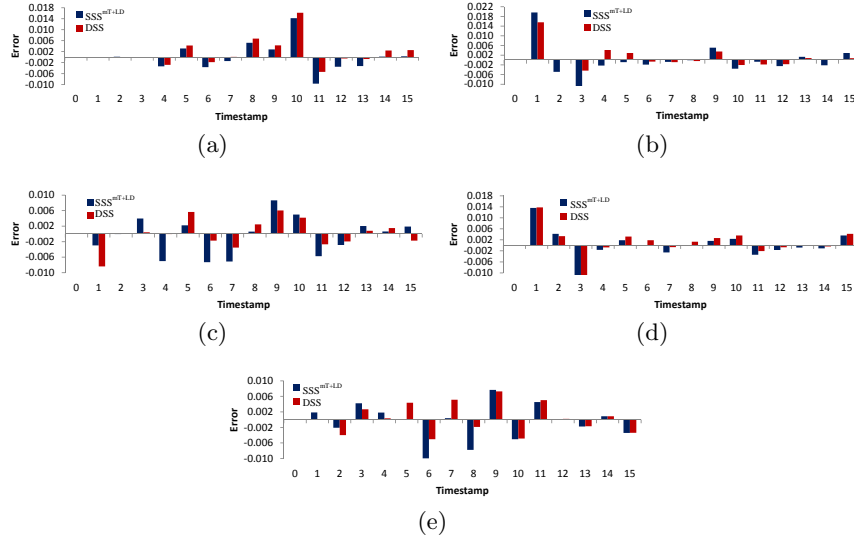


Fig. 11. Error at different time-stamps in IRMA ON dataset

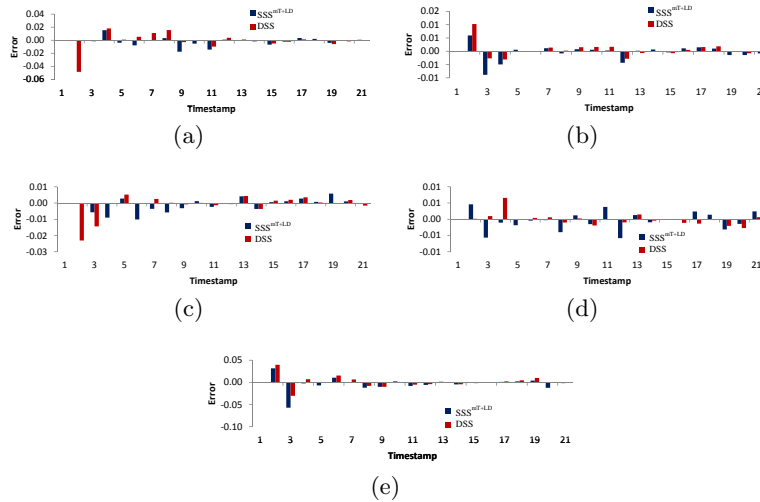


Fig. 12. Error at different time-stamps in IRMA OFF dataset

data contains noise, the experimental result is the successful application of the stochastic modeling approach over the deterministic model.

We also show the absolute error in all the time-stamps with all the eight genes for a single data set in Figure 14. The bar graph indicates that, despite slightly higher errors in the early stages of the expression profiles, the magnitude of errors reduces and are near-zero in the subsequent time-stamps. This error

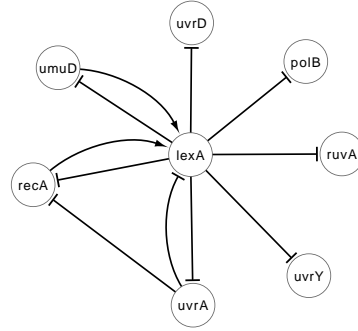


Fig. 13. Target SOS network

Table 3. Evaluation of SSS^{mT+LD} for inferring *E. coli* network

Method	S_n	S_p	P_r	$F - score$
SSS^{mT+LD}	0.40	0.95	0.62	0.43
DSS	0.25	0.93	0.50	0.33

bars shows the ability of the proposed stochastic S-system model to adapt for inferring real-life gene regulatory network.

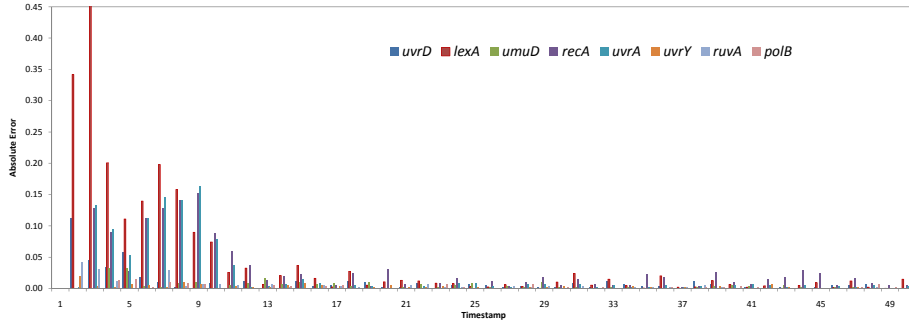


Fig. 14. Error at different time-stamps in SOS dataset

4 Conclusion

Noise is an inherent characteristics of all biological networks. S-system modeling is specially tailored to model biological process. While there have been efforts

to incorporate stochastic terms in GRN models, the S-System model in its current form is unable to include stochasticity. In this paper, we have developed a stochastic S-system modeling approach to cope with the inherent noise present in the microarray data. In order to identify the most suitable stochastic model, we have tested the performance of the stochastic S-system (SSS) model with various types of noise including hybrid noise factors. Experimental results show that the proposed SSS is effective in reconstructing the expressions profiles as well as inferring higher number of regulations than deterministic modeling. Currently, studies are being performed to extend and evaluate the technique to large scale real-life GRNs.

Acknowledgement

This work has been funded by Collaborative Research Network (CRN) project of Federation University Australia. Authors would like to acknowledge Dr. Andrew Percy from Federation University Australia (Gippsland campus) for his useful discussion.

References

1. A. Arkin, J. Ross, and H. H. McAdams. Stochastic kinetic analysis of developmental pathway bifurcation in phage λ -infected escherichia coli cells. *Genetics*, 149(4):1633–1648, 1998.
2. D. C. Bennett. Differentiation in mouse melanoma cells: initial reversibility and an on-off stochastic model. *Cell*, 34(2):445–453, 1983.
3. I. Cantone, L. Marucci, F. Iorio, M. A. Ricci, V. Belcastro, M. Bansal, S. Santini, M. di Bernardo, D. di Bernardo, and M. P. Cosma. A yeast synthetic network for in vivo assessment of reverse-engineering and modeling approaches. *Cell*, 137:172–181, 2009.
4. A. R. Chowdhury and M. Chetty. An improved method to infer gene regulatory network using S-system. In *IEEE Congress on Evolutionary Computation*, pages 1012–1019, 2011.
5. A. R. Chowdhury, M. Chetty, and N. X. Vinh. Adaptive regulatory genes cardinality for reconstructing genetic networks. In *IEEE Congress on Evolutionary Computation*, pages 1–8, 2012.
6. A. R. Chowdhury, M. Chetty, and N. X. Vinh. Evaluating the influence of mirna in gene network reconstruction. *Journal of Cognitive Neurodynamics*, 1:251–259, 2013. doi:10.1007/s11571-013-9265-x.
7. A. R. Chowdhury, M. Chetty, and N. X. Vinh. Incorporating time-delays in S-system model for reverse engineering genetic networks. *BMC Bioinformatics*, 14:196, 2013.
8. A. Climescu-Haulica and M. D. Quirk. A stochastic differential equation model for transcriptional regulatory networks. *BMC bioinformatics*, 8(Suppl 5):S4, 2007.
9. H. de Jong. Modeling and simulation of genetic regulatory systems: A literature review. *Journal of Computational Biology*, 9(1):67–103, 2002.
10. H. El Samad, M. Khammash, L. Petzold, and D. Gillespie. Stochastic modelling of gene regulatory networks. *International Journal of Robust and Nonlinear Control*, 15(15):691–711, 2005.

11. D. T. Gillespie. Stochastic simulation of chemical kinetics. *Annu. Rev. Phys. Chem.*, 58:35–55, 2007.
12. D. T. Gillespie and L. R. Petzold. Improved leap-size selection for accelerated stochastic simulation. *The Journal of Chemical Physics*, 119(16):8229–8234, 2003.
13. A. Goldbeter. A model for circadian oscillations in the drosophila period protein (per). *Proceedings of the Royal Society of London. Series B: Biological Sciences*, 261(1362):319–324, 1995.
14. I. Golding, J. Paulsson, S. M. Zawilski, and E. C. Cox. Real-time kinetics of gene activity in individual bacteria. *Cell*, 123(6):1025–1036, 2005.
15. D. Gonze, J. Halloy, and A. Goldbeter. Robustness of circadian rhythms with respect to molecular noise. *Proceedings of the National Academy of Sciences*, 99(2):673–678, 2002.
16. P. J. Goss and J. Peccoud. Quantitative modeling of stochastic systems in molecular biology by using stochastic petri nets. *Proceedings of the National Academy of Sciences*, 95(12):6750–6755, 1998.
17. W. He and J. Cao. Robust stability of genetic regulatory networks with distributed delay. *Cognitive Neurodynamics*, 2(4):355–361, 2008.
18. S. Kikuchi, D. Tominaga, M. Arita, K. Takahashi, and M. Tomita. Dynamic modeling of genetic networks using genetic algorithm and S-system. *Bioinformatics*, 19(5):643–650, 2003.
19. S. Kim, J. Kim, and K.-H. Cho. Inferring gene regulatory networks from temporal expression profiles under time-delay and noise. *Computational Biology and Chemistry*, 31(4):239–245, 2007.
20. Q. Luo, R. Zhang, and X. Liao. Unconditional global exponential stability in lagrange sense of genetic regulatory networks with sum regulatory logic. *Cognitive Neurodynamics*, 4(3):251–261, 2010.
21. Y. Maki, T. Ueda, M. Okamoto, N. Uematsu, K. Inamura, K. Uchida, Y. Takahashi, and Y. Eguchi. Inference of genetic network using the expression profile time course data of mouse p19 cells. *Genome Informatics*, 13:382–383, 2002.
22. N. Noman. *A Memetic Algorithm for Reconstructing Gene Regulatory Networks from Expression Profile*. PhD thesis, Graduate School of Frontier Sciences at the University of Tokyo, 2007.
23. B.-E. Perrin, L. Ralaivola, A. Mazurie, S. Bottani, J. Mallet, and F. dAlch-Buc. Gene networks inference using dynamic Bayesian networks. *Bioinformatics*, 19(suppl 2):ii138–ii148, 2003.
24. S. K. Poovathingal and R. Gunawan. Global parameter estimation methods for stochastic biochemical systems. *BMC bioinformatics*, 11(1):414, 2010.
25. D. M. Rocke and B. Durbin. A model for measurement error for gene expression arrays. *Journal of computational biology*, 8(6):557–569, 2001.
26. M. Ronen, R. Rosenberg, B. I. Shraiman, and U. Alon. Assigning numbers to the arrows: Parameterizing a gene regulation network by using accurate expression kinetics. *National Academy of Sciences*, 99(16):10555–10560, 2002.
27. M. Savageau. *Biochemical Systems Analysis. A Study of Function and Design in Molecular Biology*. Addison-Wesley Publishing Company, Massachusetts, 1976.
28. I. Shmulevich and J. D. Aitchison. Deterministic and stochastic models of genetic regulatory networks. *Methods in enzymology*, 467:335–356, 2009.
29. I. Shmulevich, E. R. Dougherty, S. Kim, and W. Zhang. Probabilistic boolean networks: a rule-based uncertainty model for gene regulatory networks. *Bioinformatics*, 18(2):261–274, 2002.
30. T. Tian. Stochastic models for inferring genetic regulation from microarray gene expression data. *Biosystems*, 99(3):192–200, 2010.

31. T. Tian. *Stochastic Modeling of Gene Regulatory Networks*, chapter 2, pages 13–37. Wiley-VCH Verlag GmbH & Co. KGaA, 2011.
32. T. Tian and K. Burrage. Implicit taylor methods for stiff stochastic differential equations. *Applied numerical mathematics*, 38(1):167–185, 2001.
33. T. Tian and K. Burrage. Stochastic models for regulatory networks of the genetic toggle switch. *Proceedings of the National Academy of Sciences*, 103(22):8372–8377, 2006.
34. Y. Tu, G. Stolovitzky, and U. Klein. Quantitative noise analysis for gene expression microarray experiments. *Proceedings of the National Academy of Sciences*, 99(22):14031–14036, 2002.
35. E. O. Voit and T. Radivoyevitch. Biochemical systems analysis of genome-wide expression data. *Bioinformatics*, 16:1023–1037, 2000.
36. M. Wahde and J. Hertz. Coarse-grained reverse engineering of genetic regulatory networks. *Biosystems*, 55(1):129–136, 2000.
37. J. Walleczek. *Self-organized Biological Dynamics & Nonlinear Control: Toward Understanding Complexity, Chaos, and Emergent Function in Living Systems*. Cambridge University Press, 2000.
38. M. C. Walters, S. Fiering, J. Eidemiller, W. Magis, M. Groudine, and D. Martin. Enhancers increase the probability but not the level of gene expression. *Proceedings of the National Academy of Sciences*, 92(15):7125–7129, 1995.
39. Z. Wang, G. Liu, Y. Sun, and H. Wu. Robust stability of stochastic delayed genetic regulatory networks. *Cognitive Neurodynamics*, 3(3):271–280, 2009.
40. D. J. Wilkinson. Stochastic modelling for quantitative description of heterogeneous biological systems. *Nature Reviews Genetics*, 10(2):122–133, 2009.



Minerva Access is the Institutional Repository of The University of Melbourne

Author/s:

Chowdhury, AR; Chetty, M; Evans, R

Title:

Stochastic S-system modeling of gene regulatory network

Date:

2015-10-01

Citation:

Chowdhury, A. R., Chetty, M. & Evans, R. (2015). Stochastic S-system modeling of gene regulatory network. COGNITIVE NEURODYNAMICS, 9 (5), pp.535-547.

<https://doi.org/10.1007/s11571-015-9346-0>.

Persistent Link:

<http://hdl.handle.net/11343/282685>

File Description:

Accepted version