



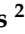



## Article

# Value of Early Circulating Tumor Cells Dynamics to Estimate Docetaxel Benefit in Metastatic Castration-Resistant Prostate Cancer (mCRPC) Patients

Rebeca Lozano <sup>1,2</sup>, David Lorente <sup>2,3</sup>, Isabel M. Aragon <sup>1,2</sup>, Nuria Romero-Laorden <sup>2,4</sup>, Paz Nombela <sup>2</sup>, Joaquim Mateo <sup>5,6,7</sup> , Alison H. M. Reid <sup>5,6</sup> , Ylenia Cendón <sup>2</sup> , Diletta Bianchini <sup>5,6</sup>, Casilda Llacer <sup>1,8</sup> , Shahneen K. Sandhu <sup>5,6,8</sup>, Adam Sharp <sup>5,6</sup>, Pasquale Rescigno <sup>5,6,9</sup>, Teresa Garcés <sup>1,2</sup>, Maria I. Pacheco <sup>1,2</sup>, Penelope Flohr <sup>5</sup>, Christophe Massard <sup>5,10</sup>, Pedro P. López-Casas <sup>2</sup> , Elena Castro <sup>1,2</sup> , Johann S. de Bono <sup>5,6</sup> and David Olmos <sup>1,2,\*</sup>



**Citation:** Lozano, R.; Lorente, D.; Aragon, I.M.; Romero-Laorden, N.; Nombela, P.; Mateo, J.; Reid, A.H.M.; Cendón, Y.; Bianchini, D.; Llacer, C.; et al. Value of Early Circulating Tumor Cells Dynamics to Estimate Docetaxel Benefit in Metastatic Castration-Resistant Prostate Cancer (mCRPC) Patients. *Cancers* **2021**, *13*, 2334. <https://doi.org/10.3390/cancers13102334>

Academic Editors: Pedro Barata and Channing Judith Paller

Received: 12 March 2021  
Accepted: 5 May 2021  
Published: 12 May 2021

**Publisher's Note:** MDPI stays neutral with regard to jurisdictional claims in published maps and institutional affiliations.



**Copyright:** © 2021 by the authors. Licensee MDPI, Basel, Switzerland. This article is an open access article distributed under the terms and conditions of the Creative Commons Attribution (CC BY) license (<https://creativecommons.org/licenses/by/4.0/>).

- <sup>1</sup> Genitourinary Cancer Traslational Research Group, The Institute of Biomedical Research in Málaga (IBIMA), 29010 Málaga, Spain; rlozano@ext.cnio.es (R.L.); isabel.aragon31@gmail.com (I.M.A.); cllacerp@gmail.com (C.L.); teresa.garcés\_del\_rey@kcl.ac.uk (T.G.); mipacheco@cnio.es (M.I.P.); elena.castro@ibima.eu (E.C.)
- <sup>2</sup> Spanish National Cancer Research Centre (CNIO), Prostate Cancer Clinical Research Unit, 28029 Madrid, Spain; lorente.davest@gmail.com (D.L.); nuriaromeroorden@gmail.com (N.R.-L.); mpnombela@cnio.es (P.N.); ycendon@cnio.es (Y.C.); pplopez@cnio.es (P.P.L.-C.)
- <sup>3</sup> Servicio de Oncología Médica, Hospital Provincial de Castellón, 12004 Castellón de la Plana, Spain
- <sup>4</sup> Hospital Universitario La Princesa, 28006 Madrid, Spain
- <sup>5</sup> The Institute of Cancer Research, London SW7 3RP, UK; jmateo@vhio.net (J.M.); alison.reid@rmh.nhs.uk (A.H.M.R.); diletta.bianchini@nhs.net (D.B.); Shahneen.Sandhu@petermac.org (S.K.S.); Adam.Sharp@icr.ac.uk (A.S.); Pasquale.Rescigno@icr.ac.uk (P.R.); Penny.Flohr@icr.ac.uk (P.F.); Christophe.MASSARD@gustaveroussy.fr (C.M.); Johann.DeBono@icr.ac.uk (J.S.d.B.)
- <sup>6</sup> The Royal Marsden NHS Foundation Trust, Sutton, London SM2 5PT, UK
- <sup>7</sup> Vall d'Hebron Institute of Oncology (VHIO), 08035 Barcelona, Spain
- <sup>8</sup> The Sir Peter MacCallum Department of Oncology, The University of Melbourne, Melbourne, VIC 3000, Australia
- <sup>9</sup> Candiolo Cancer Institute, FPO-IRCCS, 10060 Turin, Italy
- <sup>10</sup> Department of Medical Oncology, Faculté de Médecine Paris-Sud XI, Institut Gustave Roussy, 94805 Villejuif, France
- \* Correspondence: dolmos@cnio.es

**Simple Summary:** The prognostic role of CTC enumeration in mCRPC patients has been established in several studies, demonstrating a higher prognostic performance than post-treatment changes in PSA levels in patients treated with AR signaling inhibitors, but not taxanes. We carried out a pooled analysis of two prospective studies in mCRPC patients treated with docetaxel. The results of this study showed a greater ability of early changes in circulating tumor cells (CTCs) compared to PSA response endpoints to predict overall survival in metastatic castration-resistant prostate cancer (mCRPC) patients treated with docetaxel. These results encourage the clinical usefulness of CTC enumeration to determine the outcome of mCRPC patients.

**Abstract:** Circulating tumor cell (CTC) enumeration and changes following treatment have been demonstrated to be superior to PSA response in determining mCRPC outcome in patients receiving AR signaling inhibitors but not taxanes. We carried out a pooled analysis of two prospective studies in mCRPC patients treated with docetaxel. CTCs were measured at baseline and 3–6 weeks post treatment initiation. Cox regression models were constructed to compare 6-month radiographical progression-free survival (rPFS), CTCs and PSA changes predicting outcome. Among the subjects, 80 and 52 patients had evaluable baseline and post-treatment CTC counts, respectively. A significant association of higher baseline CTC count with worse overall survival (OS), PFS and time to PSA progression (TTPP) was observed. While CTC response at 3–6 weeks (CTC conversion (from  $\geq 5$  to  $< 5$  CTCs), CTC30 ( $\geq 30\%$  decline in CTC) or CTC0 (decline to 0 CTC)) and 6-month rPFS were significantly associated with OS (all  $p < 0.005$ ), the association was not significant for PSA30 or PSA50

response. CTC and PSA response were discordant in over 50% of cases, with outcome driven by CTC response in these patients. The c-index values for OS were superior for early CTC changes compared to PSA response endpoints, and similar to 6-month rPFS. Early CTC declines were good predictors of improved outcomes in mCRPC patients treated with docetaxel in this small study, offering a superior and/or earlier estimation of docetaxel benefit in comparison to PSA or rPFS that merits further confirmation in larger studies.

**Keywords:** circulating tumor cells; biomarkers; metastatic castration-resistant prostate cancer; docetaxel; PSA

## 1. Introduction

The treatment landscape for metastatic castration-resistant prostate cancer (mCRPC) has rapidly evolved in recent years. Although several drugs have demonstrated an improvement in overall survival (OS) in this setting [1], the optimal treatment sequence has not been established. The development of early treatment response biomarkers is urgently needed to avoid unnecessary exposure to ineffective therapy with undesirable toxicities and to accelerate the process of drug development.

Recommendations for the assessment of treatment response have been developed by the Prostate Cancer Working Group (PCWG) [2]. These are mainly based on computer tomography (CT) or bone scans, prostate-specific antigen (PSA) and clinical deterioration. The evaluation of radiographic response to treatment in advanced prostate cancer is significantly hampered by the fact that over 50% of patients present with bone-only disease, which is non-evaluable by RECIST criteria. Bone scans, on the other hand, do not usually change in the setting of a response and can only define progression after at least 14 weeks have elapsed, due to the potential for spurious flare reactions.

Therefore, PSA remains the cornerstone for monitoring antitumor activity in mCRPC patients with bone-only disease. This biomarker is widely used to make decisions on whether to start or change treatment for prostate cancer, but PCWG3 recommendations establish that PSA progression should not be defined before week 12 because of flare phenomenon or late response [2–4]. Although the prognostic significance of PSA as an early biomarker has been consistently reported in patients treated with androgen-receptor signaling inhibitors (ARSI) [5–10], evidence to support the PSA measure as a surrogate for OS is lacking. Due to these and other limitations, many physicians continue to rely on clinical progression to make the decision to switch therapy in these patients [1].

Circulating tumor cells (CTCs) have the potential to improve prognostic and response assessment in advanced prostate cancer. The prognostic value of CTC enumeration in mCRPC patients, both before and during systemic therapy, has been established in several studies [11–16]. Baseline “unfavorable” CTC count, defined as  $\geq 5$  CTCs/7.5 mL of blood, has consistently been associated with diminished OS. Additionally, post-treatment CTC declines have been associated with improved outcomes in mCRPC patients, with a higher prognostic performance than post-treatment changes in PSA levels [11,14,16].

Currently, PCWG3 recommends the assessment of CTCs as an endpoint for activity in clinical trial, measuring it as frequently as PSA [2]. However, data allowing comparison of the clinical utility of CTCs versus PSA in a chemotherapy-treated population remain scarce. Furthermore, the degree and significance of discordance between CTC and PSA response measures is currently unknown.

We carried out a pooled analysis of two prospective multicenter studies to examine the prognostic value of CTC counts before and after treatment in a cohort of mCRPC patients treated with docetaxel.

## 2. Materials and Methods

### 2.1. Patient Population and Study Procedures

Patients were enrolled either in a single-center prospective study at the Royal Marsden Hospital (RMH) (UK) or in the PROSTAC (Clinical-Trials.gov Identifier: NCT02362620) CTC-substudy conducted at “Hospitales Universitarios Virgen de la Victoria y Regional de Málaga” (Spain). In both studies, patients with mCRPC (serum testosterone  $\leq 50$  ng/dL) and an Eastern Cooperative Oncology Group (ECOG) performance status (PS)  $\leq 2$  who had a histological diagnosis of prostate adenocarcinoma were eligible if they were going to be treated with standard-of-care docetaxel (75 mg/m<sup>2</sup> q3w) plus prednisone (5 mg bid) as first- or second-line treatment for mCRPC. In order to enrich for patients with CTC counts  $>5/7.5$  mL, patients in both studies were required to meet at least two of the following criteria associated with high CTC counts ( $\geq 5$  CTCs) [11]: bone metastases, elevated alkaline phosphatase (ALP  $> ULN$ ), hemoglobin (Hb)  $< 10$  g/dL, baseline PSA  $> 150$  ng/mL and/or  $\geq 2$  prior lines of hormonal therapies. Both studies were approved by the institutional human ethics review boards, and all patients provided written informed consent. The RMH study was conducted between April 2009 and August 2012, and the PROSTAC CTC-substudy between January 2013 and December 2016.

CTCs were measured at baseline within 7 days of starting docetaxel (week 1, day 1). In those patients with CTC counts  $\geq 5/7.5$  mL at baseline, CTCs were enumerated again before administering cycle 2 and/or cycle 3 of docetaxel. In addition, optional samples for measuring exploratory biomarkers were obtained during cycle 1 (4 h and/or 24 h post-docetaxel administration). CTC enumeration was performed using the CellSearch™ assay (Menarini Silicon Biosystems Inc., Huntington Valley, PA, USA) [17].

Previous medical history, baseline physical examination, ECOG and laboratory tests, including Hb, ALP, lactate dehydrogenase (LDH), albumin and PSA values were obtained at baseline and with every 3 week cycle. CT scans of the thorax-abdomen-pelvis and Tc-99m-diphosphonate bone-scintigraphs were performed at baseline (within 4 weeks of docetaxel cycle 1, day 1) and repeated every 12 weeks until progression.

### 2.2. Statistical Analyses

There was no formal sample size calculation for this pooled analysis, as in both prospective studies, sample size (RMH  $n = 40$  and PROSTAC CTC-substudy  $n = 50$ ) was established for the exploration of different molecular biomarkers in response to docetaxel beyond CTC enumeration. Baseline CTC counts were categorized into three prognostic groups ( $<5$  CTC/7.5 mL, 5–50 CTC/7.5 mL and  $>50$  CTC/7.5 mL of blood) as previously described [11].

Post-treatment CTC response was determined 3 to 6 weeks after docetaxel initiation and was defined as either a  $\geq 30\%$  CTC decline from baseline (CTC30), a conversion from  $\geq 5$  CTC/7.5 mL to  $<5$  CTC/7.5 mL (CTC Conversion) or a conversion from  $\geq 1$  CTC/7.5 mL to 0 CTC (0CTC). PSA response was determined at week 12 as 30% (PSA30) or 50% (PSA50) decline from baseline. Patients who achieved these thresholds by CTCs and/or PSA were classified as responders.

The Kaplan–Meier method was used to estimate median survival and 95% confidence intervals. Cox proportional hazards models were constructed to explore the association between baseline CTC counts, CTC responses, PSA response endpoints and overall survival (OS), progression-free survival (PFS) or time to PSA progression (TTPP). The performance of the survival models including the different endpoints was assessed with the concordance index (c-index). Analyses were performed using SPSS version 21 (IBM Corp., Armonk, NY, USA) and R version 3.4.1.

### 3. Results

#### 3.1. Patient Characteristics

A total of 80 (91.9%) mCRPC patients out of 87 patients screened between both studies (RMH and PROSTAC-CTC) met the eligibility criteria and were included in this analysis (Figure S1).

After a median follow-up of 42.7 months in censored patients, the median OS of the overall population was 19.2 months (95%CI 18.2–25.3), with 70 (87.5%) events. Of those patients, 53 (66.3%) received docetaxel as first-line therapy for mCRPC, and 27 (33.8%) as second-line therapy. Median age was 72.2 years (range 47.6–87.9), 67 patients (83.8%) had bone metastases and 74 (92.6%) had ECOG PS 0–1. Other baseline characteristics are summarized in Table 1.

**Table 1.** Patient characteristics at baseline and treatments.

| Characteristics   | n (%)            |
|---|------------------|
| Docetaxel line  |                  |
| First-line  | 53 (66.2%)       |
| Second-line   | 27 (33.8%)       |
| Age at diagnosis (years)                                |                  |
| Median (range)  | 72.2 (47.6–87.9) |
| Histology grade   |                  |
| Gleason < 8   | 53 (66.2%)       |
| Gleason ≥ 8   | 27 (33.8%)       |
| M1 at diagnosis   |                  |
| No  | 35 (43.8%)       |
| Yes   | 45 (56.2%)       |
| PSA (ng/dL)   |                  |
| Median (range)  | 60.6 (2.2–1428)  |
| Metastasis site   |                  |
| Bone  | 67 (83.8%)       |
| Lymph node  | 41 (51.2%)       |
| Visceral  | 12 (15%)         |
| Performance status                                      |                  |
| ECOG 0  | 29 (36.2%)       |
| ECOG 1  | 45 (56.2%)       |
| ECOG 2  | 6 (7.5%)         |
| ALP > ULN   | 42 (52.5%)       |
| LDH > ULN   | 32 (40%)         |
| Hemoglobin < 10 g/dL                                    | 7 (8.8%)         |
| Albumin < 3.5 g/dL                                      | 13 (16.2%)       |
| Prior treatment   |                  |
| None  | 53 (66.2%)       |
| Abiraterone   | 20 (25%)         |
| Enzalutamide  | 7 (8.8%)         |
| Median time from diagnosis to mCRPC—months (range)      | 31.6 (1.8–229)   |
| Median time from continuous ADT to mCRPC—months (range) | 27.9 (4.9–205.6) |

Abbreviations: PSA, prostate-specific antigen; ECOG, Eastern Cooperative Oncology Group; ALP, alkaline phosphatase; LDH, lactate dehydrogenase; mCRPC, metastatic castration-resistant prostate cancer; ADT, androgen deprivation therapy.

#### 3.2. Baseline CTC Count and Prognosis

Median baseline CTC count was 6.5 cells/7.5 mL (range 0–1266). Twenty patients (25%) had a favorable (<5 CTC/7.5 mL) CTC counts, while 60 patients (75%) had unfavorable counts (>5 CTC/7.5 mL). Of those patients with baseline unfavorable counts, 49 (81.7%) and 11 (18.3%) presented with baseline CTCs counts ≥5–50/7.5 mL or >50/7.5 mL, respectively.

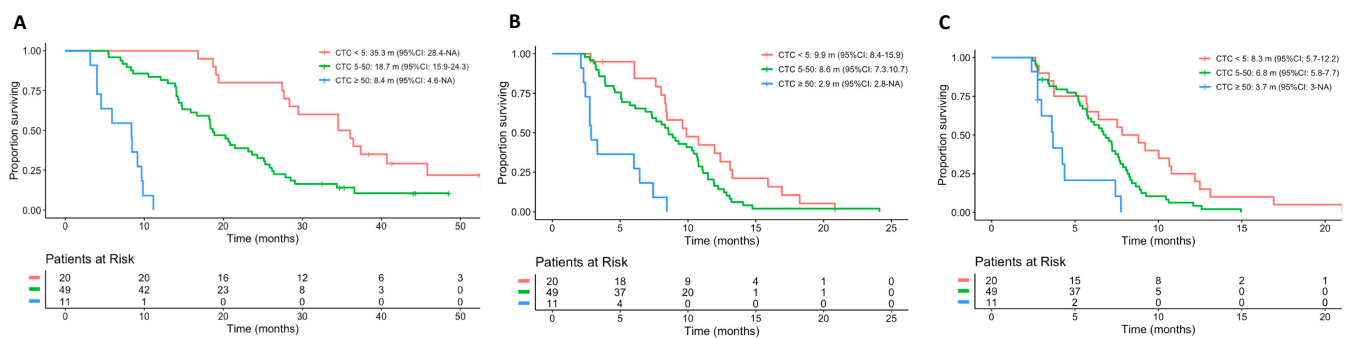
The associations between baseline characteristics and CTC counts are shown in Table 2. Higher CTC counts were associated with poor ECOG PS ( $p = 0.001$ ), higher ALP ( $p = 0.038$ ) and LDH values ( $p < 0.001$ ) and lower hemoglobin levels ( $p < 0.001$ ).

**Table 2.** Associations between CTC count and baseline characteristics of patients.

| Characteristics       | n  | CTC/7.5 mL |        | p-Value |
|-----------------------|----|------------|--------|---------|
|                       |    | Median     | Range  |         |
| CTC count at baseline | 80 | 6.5        | 0–1266 | -       |
| Docetaxel line        |    |            |        |         |
| First-line            | 53 | 6          | 0–891  | 0.3     |
| Second-line           | 27 | 9          | 0–1266 |         |
| Age (years)           |    |            |        |         |
| <Median               | 40 | 6          | 0–567  | 0.13    |
| ≥Median               | 40 | 7          | 0–1266 |         |
| Histology             |    |            |        |         |
| Gleason < 8           | 27 | 6          | 0–891  | 0.81    |
| Gleason ≥ 8           | 53 | 7          | 0–1266 |         |
| M1 at diagnosis       |    |            |        |         |
| Yes                   | 45 | 9          | 0–1266 | 0.27    |
| No                    | 35 | 6          | 0–567  |         |
| PSA (ng/dL)           |    |            |        |         |
| <Median               | 40 | 5          | 0–891  | 0.76    |
| ≥Median               | 40 | 8.5        | 0–1266 |         |
| Metastasis site       |    |            |        |         |
| Bone                  | 67 | 7          | 0–1266 | 0.35    |
| Lymph node            | 41 | 7          | 0–891  | 0.4     |
| Visceral              | 12 | 10         | 0–891  | 0.87    |
| ECOG                  |    |            |        |         |
| ECOG 0                | 29 | 5          | 0–51   | 0.001   |
| ECOG 1                | 45 | 9          | 0–567  |         |
| ECOG 2                | 6  | 14.5       | 0–1266 |         |
| ALP                   |    |            |        |         |
| Normal                | 38 | 5          | 0–56   | 0.038   |
| Elevated (>ULN)       | 42 | 9          | 2–1266 |         |
| LDH                   |    |            |        |         |
| Normal                | 48 | 5          | 0–98   | 0.007   |
| Elevated (>ULN)       | 32 | 10         | 5–1266 |         |
| Hemoglobin            |    |            |        |         |
| ≥10 g/dL              | 73 | 6          | 0–567  | <0.001  |
| <10 g/dL              | 7  | 7          | 0–1266 |         |
| Albumin               |    |            |        |         |
| ≥3.5 g/dL             | 66 | 6          | 0–1266 | 0.07    |
| <3.5 g/dL             | 13 | 19         | 6–891  |         |

Abbreviations: CTC, circulating tumor cell; PSA, prostate-specific antigen; ECOG, Eastern Cooperative Oncology Group; ALP, alkaline phosphatase; LDH, lactate dehydrogenase; ULN, upper limit of normal; mCRPC, metastatic castration-resistant prostate cancer; ADT, androgen deprivation therapy.

Baseline CTC counts (as a continuous variable) were significantly associated with OS (hazard ratio (HR): 1.02; 95%CI: 1.01–1.03). Patients with CTCs ≥5/7.5 mL experienced a worse OS (HR: 3; 95%CI: 1.7–5.4;  $p < 0.001$ ) than those with CTCs < 5/7.5 mL (Figure 1, Table 3). Similarly, patients with CTCs >50/7.5 mL had worse outcomes than patients with 5–50 or <5 CTCs/7.5 mL (Figure 1, Table 3).



**Figure 1.** Kaplan–Meier plot for (A) overall survival; (B) progression-free survival and (C) time to PSA progression according to baseline CTC count. Abbreviations: CTC, circulating tumor cell; m, months.

**Table 3.** Association of survival outcomes and baseline CTC count.

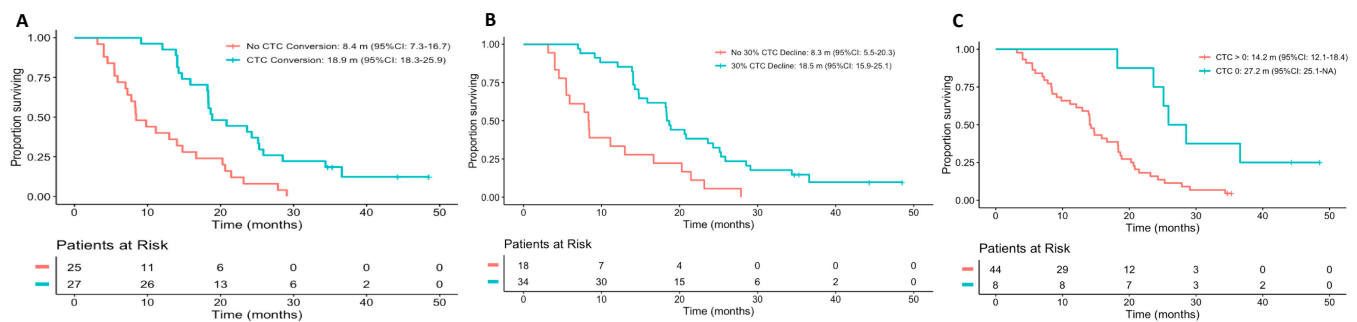
| Overall Survival                               |                  |                   |         |
|--|------------------|-------------------|---------|
| Category                                       | Median           | HR (95%CI)        | p-Value |
| <5 CTCs  | 35.3 (28.4–NA)   | 1                 | 1       |
| 5–50 CTCs                                      | 18.7 (15.9–24.3) | 2.69 (1.47–4.93)  | 0.0014  |
| >50 CTCs                                       | 8.4 (4.5–NA)     | 40.4 (13.6–119.6) | <0.0001 |
| Progression-Free Survival (composite endpoint) |                  |                   |         |
| <5 CTCs  | 9.9 (8.4–15.9)   | 1                 | 1       |
| 5–50 CTCs                                      | 8.6 (7.4–10.7)   | 1.66 (0.96–2.88)  | 0.0691  |
| >50 CTCs                                       | 2.9 (2.8–NA)     | 8.13 (3.56–18.57) | <0.0001 |
| Time to PSA Progression                        |                  |                   |         |
| <5 CTCs  | 8.3 (5.7–12.2)   | 1                 | 1       |
| 5–50 CTCs                                      | 6.8 (5.8–7.7)    | 1.96 (1.12–3.45)  | 0.0187  |
| >50 CTCs                                       | 3.7 (3–NA)       | 5.35 (2.31–12.37) | 0.0001  |

Abbreviations: CTC, circulating tumor cell; PSA, prostate-specific antigen; NA, not available.

### 3.3. CTC and PSA Decline as Response Measures

Of the 80 eligible patients, 52 (65%) had  $\geq 5/7.5$  mL CTCs at baseline and had a second blood collection, and were eligible for response analysis. Compared to baseline, 34 patients (65.4%) experienced a  $\geq 30\%$  decline in CTC count (CTC30), 27 patients (51.9%) had a conversion from  $\geq 5$  CTCs at baseline to  $< 5$  CTCs (CTC Conversion) and 8 (15.4%) patients experienced a decline to 0 CTCs (CTC0). Of these 52 patients, 32 (61.5%) and 22 (42.3%) experienced a 30% and 50% PSA decline, respectively.

CTC decline  $\geq 30\%$  (CTC30) from baseline (Yes 18.5 vs. No 8.3 months,  $p < 0.001$ ), CTC conversion (Yes 18.9 vs. No 8.4 months,  $p < 0.001$ ) and CTC0 decline (Yes 27.2 vs. No 14.2 months,  $p = 0.005$ ) responses were all associated with an increased OS (Figure 2). However, neither PSA by either 30% or 50% declines were significantly associated with survival (Table 4).



**Figure 2.** Kaplan–Meier plots for overall survival according to CTC measured as (A) CTC conversion from  $\geq 5$  CTC/7.5 mL to  $< 5$  CTC/7.5 mL; (B) 30% CTC decline from baseline and (C) conversion from  $\geq 1$  CTC/7.5 mL to 0 CTC (CTC0). Abbreviations: CTC, circulating tumor cell; m, months.

**Table 4.** Median overall survival, hazard ratios and c-index values for CTC and PSA response endpoints.

| CTC/PSA Response | n (%)     | Median OS (Months) |      | HR (95%CI)       | p-Value | c-Index |
|------------------|-----------|--------------------|------|------------------|---------|---------|
|                  |           | Yes                | No   |                  |         |         |
| CTC30            | 34 (65.4) | 18.5               | 8.3  | 0.33 (0.18–0.61) | 0.0004  | 0.6436  |
| CTC Conv         | 27 (51.9) | 18.9               | 8.4  | 0.33 (0.18–0.60) | 0.0003  | 0.6645  |
| CTC0             | 8 (15.4)  | 27.2               | 14.2 | 0.26 (0.1–0.67)  | 0.0053  | 0.6018  |
| PSA30            | 32 (62.7) | 18.3               | 13.4 | 0.72 (0.40–1.29) | 0.2692  | 0.5631  |
| PSA50            | 22 (43.1) | 19.3               | 13.4 | 0.68 (0.38–1.20) | 0.1808  | 0.5946  |

Abbreviations: OS, overall survival; CTC, circulating tumor cells; PSA, prostate specific antigen. Yes and No: Patients classified as responders or non-responders, respectively, according to the different definitions for CTC or PSA response.

CTC response endpoints had a consistently higher discriminating ability than PSA response endpoints in Cox-PH models. CTC conversion (c-index: 0.664), CTC30 (c-index: 0.644) and CTC0 (c-index: 0.602) had higher c-indices than PSA50 (c-index: 0.594) or PSA30 (c-index: 0.563) (Table 4). Differences in time-dependent ROC AUCs are represented in Figure S2.

### 3.4. Concordance between CTC, PSA Response and rPFS

We then evaluated the degree of concordance between a 30% CTC decline and a 30% PSA response. In most cases (22 cases, 42.3%), CTC and PSA responses were concordant. In 12 (23.1%) cases, however, patients experienced a CTC response without a PSA response. On the other hand, 8 (15.4%) patients experienced a PSA response without a CTC response, and 10 (19.2%) patients experienced neither a PSA nor a CTC response.

Median OS was similar in patients with a concordant response in both PSA and CTCs (19.5 months; 95%CI: 15.9–28.5 months), and in patients with a CTC response without PSA response (18.5 months; 95%CI: 13.9–NA). Patients with a PSA response but no CTC response had a numerically lower survival (9.8 months) than those with a CTC response but no PSA response, although this difference was not statistically significant ( $p = 0.667$ ). Patients with no response in terms of either PSA or CTCs (concordant non-response) had the lowest survival (7.1 months) (Table S1).

We then compared the performance of 6-month radiographic progression-free survival (rPFS) to the different CTC response measures. Of 52 patients that reached the 6-month landmark survival point, 49 were included. Among the 33 patients who experienced an early CTC decline greater than 30%, 26 (78.8%) were radiographic progression-free at 6 months, while only 7 (21.2%) experienced an rPFS event. Six-month rPFS was significantly associated with OS (20.3 vs. 7.5 months; HR 2.9; 95%CI: 1.52–5.48;  $p < 0.001$ ), but the OS discriminating ability of 6-month rPFS (c-index: 0.649) was not superior to that of 30% CTC decline (c-index: 0.644) or CTC conversion (c-index: 0.664).

#### 4. Discussion

The prognostic value of baseline CTC enumeration in mCRPC patients has been well documented in post-hoc analyses from several clinical trials including patients treated both with chemotherapy [11,12,18–20] and ARSIS [13,21]. However, data from patients on chemotherapy come from subjects treated in combination trials of docetaxel with lenalidomide, atrasentan or other drugs [11,19,20].

Here, we report the combined results of two prospective studies carried out in cohorts of patients treated only with docetaxel as first- or second-line therapy in routine clinical practice. In line with the current evidence, we observed an association of high baseline CTC counts with poor prognostic factors and features of high tumor burden (elevated ALP, LDH, poor ECOG PS or low hemoglobin), although both studies were precisely designed to enrich patients with these characteristics and high CTC counts.

Furthermore, in line with results from previous studies, we observed an association between higher baseline CTC and poor outcome, not only in terms of OS but also PFS (Figure 1). Our results support the premise that it is preferable to consider changes in CTC counts as a continuous variable, rather than a simple dichotomy between “favorable” and “unfavorable” CTCs, and that patients with very high CTC counts have a particularly adverse prognosis. In our study, patients with >50 CTCs at baseline had almost four times shorter median OS compared with those patients with <5 CTCs, and half the median OS observed in patients with 5–50 CTCs (Figure 1A), supporting previously published evidence [11].

Previous studies have also shown that changes in CTCs during treatment can be a reliable indicator of response, demonstrating that early decline in CTC counts after treatment is associated with improved outcomes in mCRPC patients [11,12,14]. However, there have not been consistent criteria for the definition of a response to treatment.

Although PCWG3 criteria recommend evaluating the rate of conversion from unfavorable to favorable CTC counts as a measure of response in clinical trials [2], by this strategy, as many as 60% of treatment-naïve, minimally symptomatic patients could be ineligible for response assessments [16]. Alternative response criteria, such as 30% declines from baseline or conversion from detectable ( $\geq 1$ CTC) to undetectable CTC counts (CTC0), were proposed in other studies. In a pooled analysis of five clinical trials in mCRPC patients treated with ARSIS and targeted therapy (but no chemotherapy), the CTC0 endpoint had a better performance than all other endpoints in the prognostic models [16]. In our study, however, c-index values were higher for the CTC conversion (0.665) and CTC30 (0.644) than the CTC0 (0.602) endpoints. This may be due to the greater baseline CTC counts in our study; all of our patients that had follow-up CTC counts had  $\geq 5$  CTCs at baseline. On the other hand, a greater performance of these endpoints in chemotherapy-treated patients, as opposed to ARSIS-treated patients, cannot be ruled out.

PSA is the most widely used response biomarker in the day-to-day care of patients with advanced prostate cancer. Studies have found a significant association between 30% or 50% declines and OS in several clinical trials [9,10]. In our study, however, neither 30% nor 50% PSA declines were associated with survival. One must take into account that PSA is a pharmacodynamic biomarker that is ultimately related with the activity of the androgen receptor (AR) pathway. PSA level changes might be more useful for monitoring responses in patients treated with drugs that directly target AR pathways, such as abiraterone acetate or enzalutamide.

In our study, CTC-based endpoints had consistently higher c-index values (from 0.602 to 0.664) than PSA-based response endpoints (from 0.563 to 0.594). This is in line with results from previous studies that have shown that CTC count is a better predictor of survival than post-treatment changes in PSA [11,12,16]. Our results suggest that in cases with discordant PSA and CTC responses, response (or lack thereof) by CTCs is a more reliable indicator of outcome than PSA.

A number of limitations must be acknowledged. First, our small sample size, with 52 patients eligible for CTC response analysis, may limit the interpretation of the results,



especially in comparison with other studies, such as that reported by Heller and colleagues [16], performed in over 5000 advanced prostate cancer patients. Secondly, only patients with baseline CTC counts  $\geq 5/7.5$  mL were selected for response evaluation. This may be a potential source of bias, especially when comparing the performance of the different CTC response endpoints.

## 5. Conclusions

In conclusion, baseline CTC enumeration is a good predictor of survival in patients treated with docetaxel as first- or second-line therapy. Likewise, in our cohort of patients, early CTC decline after treatment was demonstrated to be a better predictor of survival, with better performance than PSA response endpoints. Despite the limitations of our small study, these results suggest CTC response might serve as an early biomarker of treatment response, avoiding unnecessary exposure to failure therapies and undesirable toxicities. Further prospective clinical trials incorporating CTC as an endpoint for activity are needed.

**Supplementary Materials:** The following are available online at <https://www.mdpi.com/article/10.3390/cancers13102334/s1>, Figure S1: Study flowchart. Figure S2: Time-dependent ROC areas under the curve (AUCs) of the CTC response endpoints, PSA response endpoints and 6-month radiographic progression-free survival. Table S1: Concordance between CTC and PSA response endpoints.

**Author Contributions:** Study concept: R.L., D.L., E.C., J.S.d.B., D.O. Study design: R.L., D.L., E.C., J.S.d.B., D.O. Data acquisition: R.L., I.M.A., N.R.-L., J.M., A.H.M.R., Y.C., D.B., C.L., S.K.S., A.S., P.R., T.G., M.I.P., P.F., C.M., P.P.L.-C., E.C., P.N. Data analysis and interpretation: R.L., D.L., I.M.A., N.R.-L., J.M., P.P.L.-C., E.C., J.S.d.B., D.O. Statistical analysis: R.L., D.L., D.O. Manuscript preparation: R.L., D.L., I.M.A., E.C., D.O. Manuscript editing, review and approval of the final version: all authors. All authors have read and agreed to the published version of the manuscript.

**Funding:** The results reported here were generated as part of two academic studies supported by various grants. The funding sources had no role in study design, data analysis, data interpretation or writing of the report. R.L., D.L. and D.O. had full access to all of the data and had final responsibility for the decision to submit for publication. This project represents independent research supported by the National Institute for Health Research (NIHR) Biomedical Research Centre at The Royal Marsden NHS Foundation Trust and the Institute of Cancer Research, London. The views expressed are those of the author(s) and not necessarily those of the NIHR or the Department of Health and Social Care.

**Institutional Review Board Statement:** The studies were conducted according to the guidelines of the Declaration of Helsinki, and approved by the Ethics Committee of The Royal Marsden Research (protocol code REC:07/Q0801/72, date of approval: May 2007) and by the “Comité Ético de Investigación Clínica de HM hospitales, Madrid” and by the Spanish regulatory authority (AEMPS) with the code CNI-DOC-2014-02 (date of approval April 2014).

**Informed Consent Statement:** Both studies were approved by the institutional human ethics review boards. Written informed consent was obtained for all patients who participated in both studies. These studies were performed in accordance with the Declaration of Helsinki.

**Data Availability Statement:** Limited data presented in this study are available on request from the corresponding author. The full study dataset are not publicly available at the present due to ongoing planned analysis.

**Acknowledgments:** This work was partly supported by grants from “Fondo de Investigación Sanitaria, Instituto de Salud Carlos III” (PI16/01565), a Spanish Oncology Genito-Urinary Group (SOGUG), a grant from the “Sociedad Española de Oncología Médica” as well as unrestricted grants from “Fundación CRIS contra el cancer”. D.O. (2014), J.M. (2016), E.C. (2017), A.S. (2018) and P.R. (2019) have been supported by Young Investigators Awards from the Prostate Cancer Foundation (Santa Mónica, US). During the conduct of this study, R.L., N.R.-L., C.L. and E.C. were supported by grants from “Instituto de Salud Carlos III” (No. CM17-00221 [R.L.], CM14-00200 and JR17/00007 [N.R.L.], CM19/00234 [C.L.] and No. JR18/00011 [E.C.]). I.A., P.N., E.C. and D.O. were also funded by grants from “Ministerio de Economía, Industria y Competitividad” (No. SVP-2013-067937 [P.N.], No. JCI-2016-28121 [I.A.], No. JCI-2014-19129 [E.C.], No. RYC-2015-18625 [D.O.]). Y.C. was supported by a grant from “Ministerio de Educación, Cultura y Deportes” (No. FPU15/05126). D.O. was also funded

by a Return fellowship from “Fundación Científica de la Asociación Española Contra el Cáncer”, 2012–2016.

**Conflicts of Interest:** R.L. declares speaker fees from Roche, Janssen, Sanofi and Bayer, and travel support from Roche, Janssen, Sanofi and Astellas Pharma. D.L. declares speaker fees from Janssen, Bayer, Astellas Pharma, Sanofi, Pfizer and BMS, consulting or Advisory Role from Sanofi, and travel support from Janssen and Astellas Pharma. N.R.-L. declares speaker fees from MSD, consulting or Advisory Role from Ipsen, Astellas Pharma, Bayer, Tesaro, AstraZeneca and Sanofi, research funding from Janssen (Inst) and Pfizer (Inst) and travel support from Janssen. J.M. declares consulting or Advisory Role from AstraZeneca, Janssen and Roche, speaker fees from Astellas Pharma, AstraZeneca and Sanofi and travel support from AstraZeneca, Ipsen and Sanofi. A.R. declares speaker fees, honoraria and travel support from Janssen, Astellas Pharma and AstraZeneca. C.L. declares honoraria from Roche and travel support from Astellas Pharma and Angelini. S.K.S. declares consulting or Advisory Role from AstraZeneca and Merck, research funding from AstraZeneca, Merck Sharp and Dohme, Amgen and Endocyte. A.S. declares travel support from Sanofi and Roche-Genentech and speaker fees from Astellas Pharma. C.M. declares consultant or Advisory Role from Angen, Astellas Pharma, AstraZeneca, Bayer, BeiGene, BMS, Celgene, Debiopharm, Genentech, Ipsen, Janssen, Lilly, MedImmune, MSD, Novartis, Pfizer, Roche, Sanofi and Orion. E.C. declares honoraria from Astellas Pharma, AstraZeneca, Bayer, Clovis, Janssen, Pfizer and Roche, consulting or Advisory Roles for AstraZeneca, Bayer, Janssen and MSD, research funding from AstraZeneca (Inst), Bayer (Inst) and Janssen (Inst) and travel support from Bayer, Janssen, Roche and Astellas Pharma. J.S.d.B. has served on advisory boards and received fees from many companies including AstraZeneca, Astellas, Bayer, Boehringer Ingelheim, Cellcentric, Daiichi, Genentech/Roche, Genmab, GSK, Janssen, Merck Serono, Merck Sharp & Dohme, Menarini/Silicon Biosystems, Orion, Pfizer, Qiagen, Sanofi Aventis, Sierra Oncology, Taiho and Vertex Pharmaceuticals. He is an employee of the ICR, which has received funding or other support for his research work from AZ, Astellas, Bayer, Cellcentric, Daiichi, Genentech, Genmab, GSK, Janssen, Merck Serono, MSD, Menarini/Silicon Biosystems, Orion, Sanofi Aventis, Sierra Oncology, Taiho, Pfizer and Vertex, and which has a commercial interest in abiraterone, PARP inhibition in DNA repair defective cancers and PI3K/AKT pathway inhibitors (no personal income). He was named as an inventor, with no financial interest, for patent 8,822,438. He has been the CI/PI of many industry sponsored clinical trials. D.O. declares consulting or Advisory Role from AstraZeneca, Bayer, Clovis, Daiichi-Sankyo, Janssen, MSD and Roche, research funding from Astellas (Inst), AstraZeneca (Inst), Bayer (Inst), Genentech (Inst), Janssen (Inst), Medivation (Inst), MSD (Inst), Pfizer (Inst), F. Hoffman-Roche (Inst) and Tokai Pharmaceuticals (Inst) and travel support from AstraZeneca, Bayer, Ipsen, Janssen and Roche. I.M.A., P.N., Y.C., D.B., T.G., M.I.P., P.F., P.P.L.-C. and P.R. do not have any relationships. The funding sources had no role in the design and conduct of the study, the analysis and interpretation of data, or in the preparation, review, or approval of the manuscript.

## References

1. Lorente, D.; Ravi, P.; Mehra, N.; Pezaro, C.; Omlin, A.; Gilman, A.; Miranda, M.; Rescigno, P.; Kolinsky, M.; Porta, N.; et al. Interrogating Metastatic Prostate Cancer Treatment Switch Decisions: A Multi-institutional Survey. *Eur. Urol. Focus* **2018**, *4*, 235–244. [[CrossRef](#)]
2. Scher, H.I.; Morris, M.J.; Stadler, W.M.; Higano, C.; Basch, E.; Fizazi, K.; Antonarakis, E.S.; Beer, T.M.; Carducci, M.A.; Chi, K.N.; et al. Trial Design and Objectives for Castration-Resistant Prostate Cancer: Updated Recommendations From the Prostate Cancer Clinical Trials Working Group 3. *J. Clin. Oncol.* **2016**, *34*, 1402–1418. [[CrossRef](#)]
3. Berthold, D.R.; Pond, G.R.; Roessner, M.; De Wit, R.; Eisenberger, M.; Tannock, A.I.F. Treatment of Hormone-Refractory Prostate Cancer with Docetaxel or Mitoxantrone: Relationships between Prostate-Specific Antigen, Pain, and Quality of Life Response and Survival in the TAX-327 Study. *Clin. Cancer Res.* **2008**, *14*, 2763–2767. [[CrossRef](#)] [[PubMed](#)]
4. Angelergues, A.; Maillet, D.; Fléchon, A.; Ozgüroglu, M.; Mercier, F.; Guillot, A.; Le Moulec, S.; Gravis, G.; Beuzeboc, P.; Massard, C.; et al. Prostate-specific antigen flare induced by cabazitaxel-based chemotherapy in patients with metastatic castration-resistant prostate cancer. *Eur. J. Cancer* **2014**, *50*, 1602–1609. [[CrossRef](#)] [[PubMed](#)]
5. Rescigno, P.; Lorente, D.; Bianchini, D.; Ferraldeschi, R.; Kolinsky, M.P.; Sideris, S.; Zafeiriou, Z.; Sumanasuriya, S.; Smith, A.D.; Mehra, N.; et al. Prostate-specific Antigen Decline After 4 Weeks of Treatment with Abiraterone Acetate and Overall Survival in Patients with Metastatic Castration-resistant Prostate Cancer. *Eur. Urol.* **2016**, *70*, 724–731. [[CrossRef](#)] [[PubMed](#)]
6. Fuerea, A.; Baciarello, G.; Patrikidou, A.; Albigès, L.; Massard, C.; Di Palma, M.; Escudier, B.; Fizazi, K.; Lorient, Y. Early PSA response is an independent prognostic factor in patients with metastatic castration-resistant prostate cancer treated with next-generation androgen pathway inhibitors. *Eur. J. Cancer* **2016**, *61*, 44–51. [[CrossRef](#)] [[PubMed](#)]

7. Armstrong, A.J.; Lin, P.; Higano, C.S.; Iversen, P.; Sternberg, C.N.; Tombal, B.; Phung, D.; Parli, T.; Krivoschik, A.; Beer, T.M. Prognostic Association of Prostate-specific Antigen Decline with Clinical Outcomes in Men with Metastatic Castration-resistant Prostate Cancer Treated with Enzalutamide in a Randomized Clinical Trial. *Eur. Urol. Oncol.* **2019**, *2*, 677–684. [[CrossRef](#)]
8. Facchini, G.; Caffo, O.; Ortega, C.; D’Aniello, C.; Di Napoli, M.; Cecere, S.C.; Della Pepa, C.; Crispo, A.; Maines, F.; Ruatta, F.; et al. Very Early PSA Response to Abiraterone in mCRPC Patients: A Novel Prognostic Factor Predicting Overall Survival. *Front. Pharmacol.* **2016**, *7*. [[CrossRef](#)]
9. Halabi, S.; Armstrong, A.J.; Sartor, O.; De Bono, J.; Kaplan, E.; Lin, C.-Y.; Solomon, N.C.; Small, E.J. Prostate-Specific Antigen Changes As Surrogate for Overall Survival in Men With Metastatic Castration-Resistant Prostate Cancer Treated With Second-Line Chemotherapy. *J. Clin. Oncol.* **2013**, *31*, 3944–3950. [[CrossRef](#)] [[PubMed](#)]
10. Armstrong, A.J.; Garrett-Mayer, E.; Yang, Y.-C.O.; Carducci, M.A.; Tannock, I.; De Wit, R.; Eisenberger, M. Prostate-Specific Antigen and Pain Surrogacy Analysis in Metastatic Hormone-Refractory Prostate Cancer. *J. Clin. Oncol.* **2007**, *25*, 3965–3970. [[CrossRef](#)]
11. Olmos, D.; Arkenau, H.-T.; Ang, J.E.; Ledaki, I.; Attard, G.; Carden, C.P.; Reid, A.H.M.; A’Hern, R.; Fong, P.C.; Oomen, N.B.; et al. Circulating tumour cell (CTC) counts as intermediate endpoints in castration-resistant prostate cancer (CRPC): A single-centre experience. *Ann. Oncol.* **2008**, *20*, 27–33. [[CrossRef](#)]
12. De Bono, J.S.; Scher, H.I.; Montgomery, R.B.; Parker, C.; Miller, M.C.; Tissing, H.; Doyle, G.V.; Terstappen, L.W.; Pienta, K.J.; Raghavan, D. Circulating Tumor Cells Predict Survival Benefit from Treatment in Metastatic Castration-Resistant Prostate Cancer. *Clin. Cancer Res.* **2008**, *14*, 6302–6309. [[CrossRef](#)]
13. Scher, H.I.; Heller, G.; Molina, A.; Attard, G.; Danila, D.C.; Jia, X.; Peng, W.; Sandhu, S.K.; Olmos, D.; Riisnaes, R.; et al. Circulating Tumor Cell Biomarker Panel As an Individual-Level Surrogate for Survival in Metastatic Castration-Resistant Prostate Cancer. *J. Clin. Oncol.* **2015**, *33*, 1348–1355. [[CrossRef](#)] [[PubMed](#)]
14. Lorente, D.; Olmos, D.; Mateo, J.; Bianchini, D.; Seed, G.; Fleisher, M.; Danila, D.C.; Flohr, P.; Crespo, M.; Figueiredo, I.; et al. Decline in Circulating Tumor Cell Count and Treatment Outcome in Advanced Prostate Cancer. *Eur. Urol.* **2016**, *70*, 985–992. [[CrossRef](#)]
15. Lorente, D.; Olmos, D.; Mateo, J.; Dolling, D.; Bianchini, D.; Seed, G.; Flohr, P.; Crespo, M.; Figueiredo, I.; Miranda, S.; et al. Circulating tumour cell increase as a biomarker of disease progression in metastatic castration-resistant prostate cancer patients with low baseline CTC counts. *Ann. Oncol.* **2018**, *29*, 1554–1560. [[CrossRef](#)]
16. Heller, G.; McCormack, R.; Kheoh, T.; Molina, A.; Smith, M.R.; Dreicer, R.; Saad, F.; De Wit, R.; Aftab, D.T.; Hirmand, M.; et al. Circulating Tumor Cell Number as a Response Measure of Prolonged Survival for Metastatic Castration-Resistant Prostate Cancer: A Comparison With Prostate-Specific Antigen Across Five Randomized Phase III Clinical Trials. *J. Clin. Oncol.* **2018**, *36*, 572–580. [[CrossRef](#)]
17. Allard, W.J.; Matera, J.; Miller, M.C.; Repollet, M.; Connelly, M.C.; Rao, C.; Tibbe, A.G.J.; Uhr, J.W.; Terstappen, L.W.M.M. Tumor cells circulate in the peripheral blood of all major carcinomas but not in healthy subjects or patients with nonmalignant diseases. *Clin. Cancer Res.* **2004**, *10*, 6897–6904. [[CrossRef](#)] [[PubMed](#)]
18. I Scher, H.; Jia, X.; de Bono, J.S.; Fleisher, M.; Pienta, K.J.; Raghavan, D.; Heller, G. Circulating tumour cells as prognostic markers in progressive, castration-resistant prostate cancer: A reanalysis of IMMC38 trial data. *Lancet Oncol.* **2009**, *10*, 233–239. [[CrossRef](#)]
19. Goldkorn, A.; Ely, B.; Quinn, D.I.; Tangen, C.M.; Fink, L.M.; Xu, T.; Twardowski, P.; Van Veldhuizen, P.J.; Agarwal, N.; Carducci, M.A.; et al. Circulating Tumor Cell Counts Are Prognostic of Overall Survival in SWOG S0421: A Phase III Trial of Docetaxel With or Without Atrasentan for Metastatic Castration-Resistant Prostate Cancer. *J. Clin. Oncol.* **2014**, *32*, 1136–1142. [[CrossRef](#)] [[PubMed](#)]
20. Vogelzang, N.J.; Fizazi, K.; Burke, J.M.; De Wit, R.; Bellmunt, J.; Hutson, T.E.; Crane, E.; Berry, W.R.; Doner, K.; Hainsworth, J.D.; et al. Circulating Tumor Cells in a Phase 3 Study of Docetaxel and Prednisone with or without Lenalidomide in Metastatic Castration-resistant Prostate Cancer. *Eur. Urol.* **2017**, *71*, 168–171. [[CrossRef](#)]
21. Fleisher, M.; Danila, D.C.; Fizazi, K.; Hirmand, M.; Selby, B.; Phung, D.; De Bono, J.S.; Scher, H.I. Circulating tumor cell (CTC) enumeration in men with metastatic castration-resistant prostate cancer (mCRPC) treated with enzalutamide post-chemotherapy (phase 3 AFFIRM study). *J. Clin. Oncol.* **2015**, *33*, 5035. [[CrossRef](#)]



Minerva Access is the Institutional Repository of The University of Melbourne

**Author/s:**

Lozano, R; Lorente, D; Aragon, IM; Romero-Laorden, N; Nombela, P; Mateo, J; Reid, AHM; Cendon, Y; Bianchini, D; Llacer, C; Sandhu, SK; Sharp, A; Rescigno, P; Garces, T; Pacheco, MI; Flohr, P; Massard, C; Lopez-Casas, PP; Castro, E; de Bono, JS; Olmos, D

**Title:**

Value of Early Circulating Tumor Cells Dynamics to Estimate Docetaxel Benefit in Metastatic Castration-Resistant Prostate Cancer (mCRPC) Patients

**Date:**

2021-05-01

**Citation:**

Lozano, R., Lorente, D., Aragon, I. M., Romero-Laorden, N., Nombela, P., Mateo, J., Reid, A. H. M., Cendon, Y., Bianchini, D., Llacer, C., Sandhu, S. K., Sharp, A., Rescigno, P., Garces, T., Pacheco, M. I., Flohr, P., Massard, C., Lopez-Casas, P. P., Castro, E. ,... Olmos, D. (2021). Value of Early Circulating Tumor Cells Dynamics to Estimate Docetaxel Benefit in Metastatic Castration-Resistant Prostate Cancer (mCRPC) Patients. *CANCERS*, 13 (10), <https://doi.org/10.3390/cancers13102334>.

**Persistent Link:**

<http://hdl.handle.net/11343/280626>

**File Description:**

Published version

**License:**

CC BY