

Mini-Review

PDX: Moving Beyond Drug Screening to Versatile Models for Research Discovery

Gail P. Risbridger,^{1,2,3} Mitchell G. Lawrence,^{1,2,3} and Renea A. Taylor^{2,3,4}

¹Department of Anatomy and Developmental Biology, Biomedicine Discovery Institute Cancer Program, Monash University, Melbourne, Victoria, 3800 Australia; ²Prostate Cancer Research Program, Cancer Research Division, Peter MacCallum Cancer Centre, Melbourne, Victoria, 3002 Australia; ³Sir Peter MacCallum Department of Oncology, University of Melbourne, Melbourne, Victoria 3010, Australia; and ⁴Department of Physiology, Biomedicine Discovery Institute Cancer Program, Monash University, Melbourne, Victoria, 3800 Australia

ORCID numbers: 0000-0003-3089-4028 (G. P. Risbridger); 0000-0001-9520-3000 (M. G. Lawrence); 0000-0003-2609-2380 (R. A. Taylor).

Abbreviations: AR, androgen receptor; ER+, estrogen receptor positive; JAX, the Jackson laboratory; kConFab, Kathleen Cuninghame Foundation Consortium for Research into Familial Aspects of Breast Cancer; PCT, PDX clinical trials; PDX, patient-derived xenografts; TNBC, triple-negative breast cancer.

Received: 24 July 2020; Accepted: 10 September 2020; First Published Online: 12 September 2020; Corrected and Typeset: 14 October 2020.

Abstract

Patient-derived xenografts (PDXs) are tools of the trade for many researchers from all disciplines and medical specialties. Most endocrinologists, and especially those working in oncology, commonly use PDXs for preclinical drug testing and development, and over the last decade large collections of PDXs have emerged across all tumor streams. In this review, we examine how the field has evolved to include PDXs as versatile resources for research discoveries, providing evidence for guidelines and changes in clinical practice.

Key Words: prostate cancer, breast cancer, patient-derived xenograft, organoid, pathology, preclinical testing

1. Materials and Methods

Articles included in this narrative review were compiled from original research articles, society guidelines, and reviews from peer-reviewed journals included in the PubMed database as of July 15, 2020. Search terms included “prostate cancer” OR “breast cancer” AND “patient-derived xenograft” OR “preclinical model” OR “patient-derived model” AND either “organoid,” “explant,” OR “slice culture.” We additionally searched references within publications relevant to the topic.

2. What is a Patient-Derived Xenograft (PDX)? One-Time vs Serially Transplantable PDXs

For decades, cell lines have been essential elements of laboratory research. Many of us are familiar with the NCI-60 cancer cell line panel that was established to provide a diverse and thoroughly characterized set of cell lines for screening therapeutic compounds [1]. Without doubt, the panel enabled successful drug development. But in 2020, the term *diversity* includes the notion that it is imperative to match a drug to a patient, or group of patients, most

likely to respond; that is, the need for precision medicine. This is where the use of patient-derived models, such as xenografts, has emerged.

A patient-derived xenograft (PDX) is a specimen taken from a patient and engrafted into a host mouse so that the tumor tissue remains viable for weeks or months, often surpassing its longevity in 2D *in vitro* culture [2]. The specimen may be a biopsy, a piece of tissue from a primary tumor or metastasis, ascites, effusions, or circulating tumor cells [3-7]. The sample is grafted into host mice at an orthotopic or heterotopic site (into the muscle or bone, or under the skin or renal capsule) [8-11]. The host mice are usually immunosuppressed to reduce tissue rejection. The resultant PDX may be used one time, and studied while it survives in the original graft site as a single-generation PDX, or it may be serially transplanted, by harvesting the first graft and regrafting a portion to regrow in subsequent host mice (Fig. 1). Repeating the process produces generations of a PDX, and many serially transplantable PDXs can survive for years in host mice. Cryopreserving serially transplantable PDXs can extend their longevity even further [12]. As new serially transplantable PDXs are established, they become useful models for preclinical testing and discovery research. Indeed, in response to the continuing need for more diverse models, the National Cancer Institute established a national repository of patient-derived models, including PDXs, cell cultures, organoids, and cancer-associated fibroblasts [13].

3. Serially Transplantable Patient-Derived Xenografts as Preclinical Models of Hormone-Dependent Cancers

Serially transplantable PDXs enable researchers in academia and industry to share resources and reduce duplication of effort. Studies using serially transplantable PDXs for preclinical testing are elaborate, time consuming, and expensive, but they may facilitate the translation of promising agents to clinical trials. It is hoped that conducting PDX clinical trials in host mice will inform the design of clinical trials, accelerate translation, and reduce the failure rate of new oncology drugs [14]. Thus, over recent years, we have come to expect that data from PDXs will be provided as preclinical evidence of drug efficacy.

Large consortia that span tumor streams, such as EurOPDX, Novartis, The Jackson Laboratory (JAX), CrownBio, and the National Cancer Institute's PDXNET and Patient-Derived Models Repository, are able to identify therapeutic targets and biomarkers for specific diseases or different malignancies [13-15]. Smaller consortia, such as those for breast and prostate cancers, are more specialized and reflect the need to understand the evolution

of endocrine therapy-resistant tumors as new hormonal therapies come into practice.

In 2016, a consortium of academic laboratories from Europe, Australia, and North America reported a collection of 537 serially transplantable PDXs, representing all 3 clinical subtypes of breast cancer: estrogen receptor positive (ER+), HER2+, and triple-negative breast cancer (TNBC) [16]. In this collection, 56% of PDXs were from TNBC, 36% from ER+ cancer, and only 8% from HER2+ breast cancer. ER+ tumors are the most commonly diagnosed subtype and readily accessible specimens, but they are frequently low grade, more differentiated, and have lower Ki67, leading to low engraftment rates. In comparison, the more aggressive TNBC tumors clearly have a higher take rate as PDXs [16].

For prostate cancer, the largest collection of PDXs was reported by the Movember GAP1 PDX consortium, with 98 serially transplantable PDXs [17]. This included PDXs of castration-sensitive and castration-resistant primary and metastatic prostate adenocarcinomas, as well as tumors with neuroendocrine differentiation. The prostate cancer PDXs within this collection were established by individual research laboratories, and the investigators formed the international consortium with the goal of providing the PDXs to the prostate cancer research community [17].

In breast and prostate cancer, the most aggressive and difficult to treat tumors are ER negative (ie, TNBC) and androgen receptor (AR) null (ie, neuroendocrine prostate cancer). These tumors do not respond to hormone-directed therapies, so new targeted therapies are urgently required. Thus, there is a significant need to establish serially transplantable PDXs of hormone-independent breast and prostate cancers to make these important discoveries.

4. The Utility of One-Time, Single-Generation Patient-Derived Xenografts as Tools for Research Discovery

Beyond preclinical testing, an important use of PDXs for research discovery that is often overlooked is engrafting them for one-time only use. These single-generation PDXs can be integrated with clinical research, and lead to rapid changes in clinical practice. This is particularly relevant to the prostate cancer field, where it is challenging to establish serially transplantable PDXs.

One advantage of using single-generation PDXs is that most tumors initially survive in host mice, with reported take rates of first-generation grafts in the range of approximately 40% to 90% [9, 18-20]. Although there are no standard criteria for assessing the take rate, it is often based on the presence of proliferating cancer cells in grafts after they are harvested. Because tumor samples survive

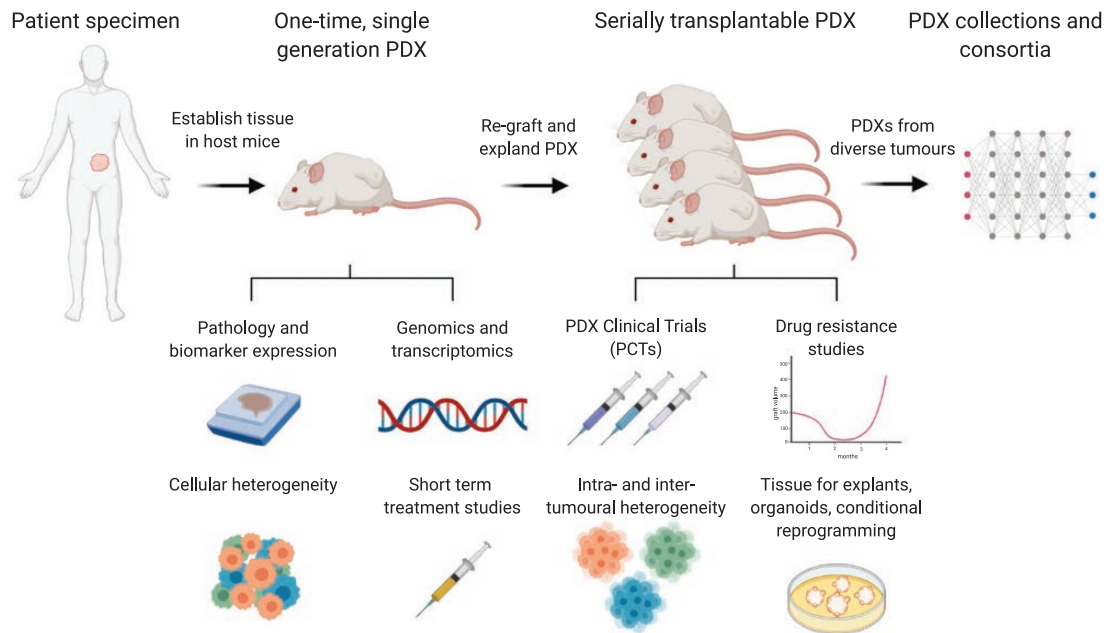


Figure 1. Utility of patient-derived xenografts for discovery research of hormone-dependent cancers. Collaborations between clinicians and scientists provide access to the high-quality human tumor specimens that are critical for establishing patient-derived xenografts (PDXs). Tumors can be grown as first-generation or one-time PDXs, which are useful for studying the short-term expansion of human tumors; pathology and biomarker expression; the genomic and transcriptomic features of tumors from rare patient cohorts; cellular heterogeneity; and the response of tissues to hormone manipulation and other short-term treatments. Serially transplantable PDXs are useful for drug testing in PDX clinical trials (PCT); identifying mechanism of therapy-resistance that evolve over time; studying intertumor and intratumor heterogeneity; and providing renewable sources of material for explants, organoids, and cultures of conditionally reprogrammed cells. Large collections of serially transplantable PDXs with diverse phenotypes are stored and disseminated by consortia. Altogether, these different uses of PDXs increase the capability and impact of preclinical and translational studies, providing evidence for changing guidelines and improving the clinical management of hormone-dependent cancers.

as single-generation PDXs for at least 6 to 8 weeks, this approach provides an opportunity to test short-term treatments and examine changes in tumor growth. Long-term propagation remains the major challenge because proliferation is often very low in prostate cancer grafts. Prostate tumors often lack the rapid proliferation and exponential tissue expansion required to generate serially transplantable PDXs, so less than 20% of samples produce long-term PDXs [21].

Another feature of single-generation PDXs is that they maintain the complex composition of the original tissue, including benign cells and different growth patterns of cancer. Therefore, single-generation PDXs can yield important insight about the original specimen. For example, in collaboration with the Kathleen Cunningham Foundation Consortium for Research into Familial Aspects of Breast Cancer (kConFab), we obtained radical prostatectomy specimens from men with germline mutations in *BRCA2* and grew them as one-time PDXs [22]. We identified intraductal carcinoma of the prostate as a prevalent pathology in these PDXs, sparking further investigations that showed the frequency of this pathology was as high as 42% in men with germline *BRCA2* mutations [22]. Further, we demonstrated that intraductal carcinoma of the prostate was associated with significantly poorer outcomes in men with germline

BRCA2 mutations [22]. This research discovery was made in a rare cohort of patients with germline mutations, and although the outcome did not directly affect pharmacological development, significant changes in clinical practice and management of patients with these clinical features were included in oncology guidelines [23].

Another application of one-time PDXs was the study of castrate-tolerant cells. Androgen deprivation therapy is the mainstay treatment for advanced prostate cancer, but it is postulated that some cancer cells are inherently resistant to this therapy because castrate-resistant prostate cancer eventually emerges. Thus, tumor cells that survive androgen withdrawal are critical cellular targets for more effective treatments in prostate cancer. Using prostate cancer specimens from unselected men, we successfully grew 64% ($n = 12$) of tumors as single-generation PDXs [20]. In a subsequent study of high-risk prostate cancer, including familial prostate cancer, the take rate for single-generation PDXs was 48% ($n = 37$) [24]. Using these PDXs, we studied the response to short-term (3 days-4 weeks) castration, and identified residual populations of quiescent tumor cells. These cells had regenerative potential because they regrew as rapidly proliferating tumors after testosterone was readministered. Zhao and colleagues also detected castration-tolerant cancer cells in first-generation grafts

of primary prostate adenocarcinoma, including high-risk primary prostate cancer, following 1 to 2 months of castration, with tumors restored after androgen repletion [25, 26]. Thus, the one-time PDXs are valuable research tools for identifying cellular subpopulations and studying tumor growth in a manipulable *in vivo* model, providing insights that are difficult to obtain from patient specimens or cell culture studies.

5. Knowing What's Growing in Your Patient-Derived Xenograft

Whether establishing a new collection of one-time or serially transplantable PDXs or maintaining existing models, it is essential to rigorously adopt the rule to “*know what you grow*.” Similar to previous experience with cell lines, where there are well known examples of misclassification [27], incorrect descriptions of PDXs can mislead the interpretation of results. The excitement of successfully establishing a new PDX quickly dissipates if it does not represent the intended tumor type. This can occur when human lymphoma arises within grafts, as has been reported for PDXs of a wide variety of tumors, including breast and prostate cancer [19, 28-32]. These lymphomas likely develop from lymphocytes that are present in the original patient tissues and can proliferate in the permissive environment of immunocompromised host mice [33]. Most lymphomas that occur in PDXs are Epstein-Barr virus–positive β -cell lymphomas, although a few T-cell lymphomas have been reported [19, 30]. The telltale signs of lymphoma include splenomegaly of the host mice, rapid and metastatic growth of grafts, lymphoid pathology, and detection of CD45, CD20, and Epstein-Barr virus within grafts [19, 28-31, 33]. In addition to human lymphoma, spontaneous murine malignancies occasionally arise in host mice, and may be confused with PDXs [34, 35]. Both cases demonstrate that it is necessary to regularly review the pathology of PDXs to ensure they are not misclassified.

Even PDXs with the correct pathology can be misidentified. In large collections of PDXs, where tumors are continually being regrafted, there is an ongoing risk that different tumors may be switched or cross-contaminated. For example, cross-contamination was identified in a cohort of PDXs of pediatric acute lymphoblastic leukemia after several transplantations [36]. Like cell lines, PDXs can be authenticated by comparing their profiles of single-nucleotide variations or short tandem repeats to reference samples, such as germline DNA, tumor tissue, or an earlier-generation PDX [36].

Once a PDX is established and validated, it is also important to thoroughly characterize its histopathology. This provides a deeper understanding of its features and,

potentially, the underlying genomic alterations that are present. For PDXs of hormone-dependent cancers, a useful panel for immunohistochemistry would include markers of epithelial cell types (eg, cytokeratin 8/18, high-molecular-weight cytokeratin, p63, smooth muscle actin), neuroendocrine markers (chromogranin A, synaptophysin, neuron-specific enolase, CD56), common tumor markers (AMACR, prostate-specific antigen, prostate-specific membrane antigen, ERG), and steroid hormone receptors (AR, ER α , progesterone receptor, and splice variants) [17, 21, 37, 38]. Beyond staining with these markers, it is prudent to ensure that a pathologist examines the growth pattern of tumor cells within PDXs [6]. For example, some AR-positive prostate adenocarcinomas can have ductal rather than acinar morphology, and this pathology can signify a different profile of genomic alterations [39]. Altogether, the histopathological features of a PDX help pinpoint the specific type of patient tumors it represents. They can also reveal surprising new information about the original patient tumor. In our hands, detailed pathology review of PDXs, even first-generation grafts, has uncovered pathologies that were overlooked at the time of patient diagnosis, such as rare cases of *de novo* neuroendocrine prostate cancer [21].

6. Integrating Patient-Derived Xenografts With Other Patient-Derived Models

There is no perfect patient-derived model, so in preclinical research it is useful to integrate different models, each with particular strengths and weakness. In addition to PDXs, patient tumors can be grown as explants, also known as slice cultures, which are whole pieces of tissue cultured *ex vivo* on sponges or filters [40-42]. Patient tumors can also be grown as organoids, digested cells cultured *in vitro* in suspension or in matrices, such as hydrogels and Matrigel (Corning Life Sciences) [43-45]. Organoids of cancer cells are also sometimes referred to as *spheroids*, *tumoroids*, or *canceroids* to recognize that they typically contain only one cell type. *In vitro* cultures can also be established from patient tissues using conditional reprogramming, where epithelium is grown on irradiated mouse fibroblasts and treated with a rho kinase inhibitor [46].

As renewable sources of human tissue, serially transplantable PDXs can be used as starting material for explants, organoids, conditionally reprogrammed cells, and co-cultures with other cell types [21, 47-54] (see Fig. 1). PDXs tissues are useful for optimizing these protocols because they provide a consistent and abundant supply of the same tumors. Indeed, PDX tissue was used to identify culture conditions and growth media for maximizing the proliferation of prostate cancer cells in explants [48, 55]. Similarly, digested PDX tissues were used to compare the

growth of prostate cancer organoids in numerous different formulations of media, showing that modified media improved the growth of some tumors [47].

PDXs are also convenient sources of tissue when appropriate patient samples are not otherwise available for testing a specific hypothesis. Just as it is essential to distinguish between different subtypes of breast cancer when designing experiments, it is important not to conflate castrate-sensitive and castrate-resistant prostate cancer. Yet, a shortage of models can lead researchers to use those that are available, but not necessarily the most suitable. PDXs can help overcome this challenge. For example, in prostate cancer research explants are usually limited to primary patient tumors because it is more challenging to obtain sufficient tissue from metastases, whereas organoids are limited to cells from metastases because cultures of primary tumors often become contaminated with benign epithelium [42, 56-58]. In both cases, PDXs may provide a way to select the most suitable tumor for a study, one that represents the desired pathology, genomic features, and stage of disease progression [21, 47, 48].

The integration of different patient-derived models also expands the scope of experimental design for testing a specific hypothesis. Compared to 2D cultures of cell lines, PDXs are low throughput, but explants and organoids bridge this gap by providing way to increase the scale of experiments [59]. For example, organoids from PDXs of prostate cancer have been used to screen a large library of therapeutics, showing that HSP90 inhibitors consistently inhibited the growth of multiple tumors [60]. Explants and organoids are also useful models for short-term experiments, such as examining rapid changes in cell signaling after drug treatment [21]. Therefore, PDXs, explants, and organoids are complementary models, helping researchers to use the right experiments and the right tumors to investigate scientific questions.

7. Patient-Derived Xenografts as Models of Tumor Heterogeneity

All PDXs, including one-time grafts, slow-growing PDXs that do not necessarily meet the criteria for drug screening, and rapidly growing PDXs that are distributed by consortia, can be interrogated in depth to provide an enormous amount of data about intertumor and intratumor heterogeneity.

Sophisticated molecular studies have been conducted with breast cancer PDXs [16, 61, 62], and similar reports are emerging from laboratories with larger collections of prostate cancer PDX. For example, the LuCAP series of 21 PDXs have genomic and phenotypic features representing human disease, including amplification of the AR,

PTEN deletion, *TP53* deletion and mutation, *RB1* loss, *TMPRSS2-ERG* rearrangements, *SPOP* mutation, hypermutation due to *MSH2/MSH6* genomic aberrations, and *BRCA2* loss [63, 64]. The MD Anderson prostate cancer PDX series (MDA PCa PDX) also captures the molecular landscape of AR alterations, *ERG* fusions, and *PTEN* loss, as well as rare or unappreciated mutations, such as a focal deletion of the *SPOPL* gene, providing unique models to study the significance of specific genomic alterations in prostate tumors [65]. Similar molecular data are available for the Living Tumor Laboratory series of prostate cancer PDXs, with profiling of long noncoding RNAs [66, 67], microRNAs [68], and genes involved in cellular energetics and macromolecular biosynthesis [69], providing an expansive transcriptomic data set from these informative models. This application of PDXs for discovery research, beyond preclinical testing, offers a powerful resource for studying unique oncogenic drivers, mechanisms of de novo and acquired drug resistance, novel biomarkers, and new therapeutic targets.

Because the purpose of PDXs is to model human disease, many studies have examined their fidelity to the original patient specimens. Overall, PDXs largely maintain the pathology, molecular features, and therapeutic sensitivity of patient tumors [14, 61, 70-72]. Yet, deep genomic profiling has detected clonal selection and new alterations in PDXs, including of breast cancer [73, 74]. Similar observations have been reported for other patient-derived models [75]. Differences between PDXs and patient samples might arise through intratumoral heterogeneity of the original tissue, genomic instability in rapidly proliferating tumor cells, and the selective pressure of establishing and regrafting tumors in immunocompromised mice [75]; however, no systematic, PDX-specific genomic alterations were identified in a recent study by the PDXNET and EurOPDX consortia [61, 72]. Once again, the maxim “know what you grow” applies. PDXs need to be characterized carefully, not just when they are established, but as they are used over time.

Tumor heterogeneity in PDXs may be a challenge if they are to be used for personalized medicine, but it can also be an opportunity. By establishing different PDXs from the same tumor or the same patient, it is possible to reveal the preexisting heterogeneity in patient samples and investigate how variations in molecular features affect tumor phenotypes [21, 32, 63, 65]. For example, the Living Tumor Laboratory established 5 PDXs with varying metastatic potential from a single primary tumor of high-grade prostate cancer [76]. Subsequent genomic and transcriptomic analyses showed that their phenotype was associated with a distinct gene expression signature in the mouse stroma [76]. Patient-matched PDXs can also be established from an individual patient at different

stages of disease progression [61, 77] or from different metastases [21, 78, 79]. Indeed, several sets of patient-matched PDXs of prostate cancer and other malignancies have been established with tissues from rapid autopsy programs, which often provide multiple metastases from each patient [21, 78-81].

Tumor heterogeneity can also be experimentally induced among PDXs through the selective pressure of treatment. PDXs of prostate cancer are often treated by castrating host mice. This mimics the reduction in circulating androgen levels in patients being treated with the AR pathway inhibitor abiraterone acetate [82]. Sublines have been established from PDXs of prostate cancer by maintaining them in testosterone-supplemented versus castrated host mice, providing useful models to study changes in AR signaling in castration-resistant prostate cancer [32, 63, 83, 84]. Similarly, different sublines of luminal breast cancer PDXs have been established through ovariectomy and taxotifen treatment of host mice [85]. Therefore, purposely inducing changes in PDXs can generate new models for studying tumor biology.

8. Summary

Patient tumors are valuable resources for research discovery and drug testing, and growing them as PDXs provides the tools for generating new knowledge. Yet, PDXs come in different guises; they can be used one-time as first-generation grafts, or serially transplanted to be used and shared between laboratories for many years.

For one-time as well as serially transplantable PDXs, and for whatever purpose they are used, the fundamental rule is to know what you grow. This is no different from ensuring the accuracy of other laboratory techniques, and is critical for interpreting results. Pathology, authentication, and fidelity are all aspects of accurately characterizing PDXs. If, for example, a PDX has a mixed pathology, each pathology may have a different molecular profile, and one might respond to treatment, whereas the other may be resistant. Authentication verifies that PDXs are not misclassified or cross-contaminated, avoiding misinterpretation of results. Fidelity, the degree of similarity between a PDX and the original tumor, may be essential if a particular PDX is to be used to inform a patient's treatment, assuming it can be established and treated in a suitable time frame. However, in many cases, patients who donate breast or prostate cancer tissue to PDX programs undergo disease progression before the PDXs are successfully established. In this case, as long as PDXs are well characterized, their fidelity is less imperative for discovery

research, for which PDXs represent subgroups of patients, rather than specific individuals. Furthermore, by knowing what is growing, any deviations from the original patient specimens may be informative about mechanisms of resistance.

Preclinical models of hormone-dependent tumors, such as breast and prostate, are essential tools of the trade for research. PDXs are one such tool, and they complement other models. Altogether, PDXs, cell lines, explants, and organoids are all needed in a researcher's toolbox. The ability to share serially transplantable PDXs is critical to their use in global consortia, but it is worth remembering that one-time PDXs can also yield invaluable information, especially for tumors that are difficult to grow, such as prostate cancer. The final question we pose is, if we generate PDXs and then share them, how do we ensure that the recipient laboratories have the expertise, training, and infrastructure to use them? These challenges can force laboratories to fall back on using cell lines, which do not represent the complexity of patient tumors. Increasing the use of PDXs will require generosity from the leaders in the field and adaptability by laboratories that apply these contemporary approaches to address their research questions.

Acknowledgments

The authors wish to acknowledge the members of the Prostate Cancer Research program, the patients, families, and consumers who support our research, and the members of the Melbourne Urological Research Alliance (MURAL). The figure was created using BioRender.com.

Financial Support: This work was supported by the National Health and Medical Research Council, Australia (fellowship to G.P.R. 1102752; project grants to G.P.R. 1138242, and M.G.L. 1156570), Department of Defense office of the Congressionally Directed Medical Research Programs through the Prostate Cancer Research Program—Impact Award (W81XWH1810349), the Department of Health and Human Services acting through the Victorian Cancer Agency (fellowships to M.G.L. MCRF18017, R.A.T. MCRF15023, CAPTIV Program), the CASS Foundation (Medical Science grant to M.G.L. 7139), the EJ Whitten Foundation, Mover (GAP Xenografting Consortium), the Peter and Lyndy White Foundation, and TissuPath Pathology.

Additional Information

Correspondence: Gail Risbridger, PhD, Monash Biomedicine Discovery Institute, 19 Innovation Walk, Melbourne, VIC 3800, Australia. E-mail: gail.risbridger@monash.edu.

Disclosure Summary: The authors have nothing to disclose.

Data Availability: Data sharing is not applicable to this article because no data sets were generated or analyzed during the present study.

References

- Chabner BA. NCI-60 Cell line screening: a radical departure in its time. *J Natl Cancer Inst.* 2016;108(5):djv388.
- Mickey DD, Stone KR, Wunderli H, Mickey GH, Vollmer RT, Paulson DF. Heterotransplantation of a human prostatic adenocarcinoma cell line in nude mice. *Cancer Res.* 1977;37(11):4049-4058.
- Risbridger GP, Lawrence MG. Towards best practice in establishing patient-derived xenografts. In: Wang Y, Lin D, Gout PW, eds. *Patient-Derived Xenograft Models of Human Cancer.* Cham, Switzerland: Humana Press; 2017.
- Williams ES, Rodriguez-Bravo V, Chippada-Venkata U, et al. Generation of prostate cancer patient derived xenograft models from circulating tumor cells. *J Vis Exp.* 2015;(104):53182.
- Baccelli I, Schneeweiss A, Riethdorf S, et al. Identification of a population of blood circulating tumor cells from breast cancer patients that initiates metastasis in a xenograft assay. *Nat Biotechnol.* 2013;31(6):539-544.
- Lawrence MG, Taylor RA, Toivanen R, et al; Australian Prostate Cancer BioResource. A preclinical xenograft model of prostate cancer using human tumors. *Nat Protoc.* 2013;8(5):836-848.
- Lawrence MG, Pook DW, Wang H, et al. Establishment of primary patient-derived xenografts of palliative TURP specimens to study castrate-resistant prostate cancer. *Prostate.* 2015;75(13):1475-1483.
- Toivanen R, Taylor RA, Pook DW, Ellem SJ, Risbridger GP. Breaking through a roadblock in prostate cancer research: an update on human model systems. *J Steroid Biochem Mol Biol.* 2012;131(3-5):122-131.
- Wang Y, Revelo MP, Sudilovsky D, et al. Development and characterization of efficient xenograft models for benign and malignant human prostate tissue. *Prostate.* 2005;64(2):149-159.
- Corey E, Quinn JE, Bladou F, et al. Establishment and characterization of osseous prostate cancer models: intra-tibial injection of human prostate cancer cells. *Prostate.* 2002;52(1):20-33.
- Wan X, Corn PG, Yang J, et al. Prostate cancer cell-stromal cell crosstalk via FGFR1 mediates antitumor activity of dovitinib in bone metastases. *Sci Transl Med.* 2014;6(252):252ra122.
- Porter LH, Lawrence MG, Wang H, et al. Establishing a cryopreservation protocol for patient-derived xenografts of prostate cancer. *Prostate.* 2019;79(11):1326-1337.
- Evrard YA, Srivastava A, Randjelovic J, et al; NCI PDXNet Consortium. Systematic establishment of robustness and standards in patient-derived xenograft experiments and analysis. *Cancer Res.* 2020;80(11):2286-2297.
- Gao H, Korn JM, Ferretti S, et al. High-throughput screening using patient-derived tumor xenografts to predict clinical trial drug response. *Nat Med.* 2015;21(11):1318-1325.
- Byrne AT, Alferez DG, Amant F, et al. Interrogating open issues in cancer precision medicine with patient-derived xenografts. *Nat Rev Cancer.* 2017;17(4):254-268.
- Dobrolecki LE, Airhart SD, Alferez DG, et al. Patient-derived xenograft (PDX) models in basic and translational breast cancer research. *Cancer Metastasis Rev.* 2016;35(4):547-573.
- Navone NM, van Weerden WM, Vessella RL, et al. Movember GAP1 PDX project: an international collection of serially transplantable prostate cancer patient-derived xenograft (PDX) models. *Prostate.* 2018;78(16):1262-1282.
- Lange T, Oh-Hohenhorst SJ, Joosse SA, et al. Development and characterization of a spontaneously metastatic patient-derived xenograft model of human prostate cancer. *Sci Rep.* 2018;8(1):17535.
- Wetterauer C, Vlajnic T, Schüler J, et al. Early development of human lymphomas in a prostate cancer xenograft program using triple knock-out immunocompromised mice. *Prostate.* 2015;75(6):585-592.
- Toivanen R, Frydenberg M, Murphy D, et al; Australian Prostate Cancer BioResource. A preclinical xenograft model identifies castration-tolerant cancer-repopulating cells in localized prostate tumors. *Sci Transl Med.* 2013;5(187):187ra71.
- Lawrence MG, Obinata D, Sandhu S, et al. Patient-derived models of abiraterone- and enzalutamide-resistant prostate cancer reveal sensitivity to ribosome-directed therapy. *Eur Urol.* 2018;74(5):562-572.
- Risbridger GP, Taylor RA, Clouston D, et al. Patient-derived xenografts reveal that intraductal carcinoma of the prostate is a prominent pathology in BRCA2 mutation carriers with prostate cancer and correlates with poor prognosis. *Eur Urol.* 2015;67(3):496-503.
- Mohler JL, Antonarakis ES, Armstrong AJ, et al. Prostate cancer, version 2.2019, NCCN Clinical Practice Guidelines in Oncology. *J Natl Compr Canc Netw.* 2019;17(5):479-505.
- Porter LH, Hashimoto K, Lawrence MG, et al; kConFab. Intraductal carcinoma of the prostate can evade androgen deprivation, with emergence of castrate-tolerant cells. *BJU Int.* 2018;121(6):971-978.
- Zhao H, Thong A, Nolley R, et al. Patient-derived tissue slice grafts accurately depict response of high-risk primary prostate cancer to androgen deprivation therapy. *J Transl Med.* 2013;11:199.
- Zhao H, Nolley R, Chen Z, Peehl DM. Tissue slice grafts: an in vivo model of human prostate androgen signaling. *Am J Pathol.* 2010;177(1):229-239.
- Capes-Davis A, Theodosopoulos G, Atkin I, et al. Check your cultures! A list of cross-contaminated or misidentified cell lines. *Int J Cancer.* 2010;127(1):1-8.
- Collins AT, Lang SH. A systematic review of the validity of patient derived xenograft (PDX) models: the implications for translational research and personalised medicine. *PeerJ.* 2018;6:e5981.
- Fujii E, Kato A, Chen YJ, Matsubara K, Ohnishi Y, Suzuki M. Characterization of EBV-related lymphoproliferative lesions arising in donor lymphocytes of transplanted human tumor tissues in the NOG mouse. *Exp Anim.* 2014;63(3):289-296.
- Bondarenko G, Ugolkov A, Rohan S, et al. Patient-derived tumor xenografts are susceptible to formation of human lymphocytic tumors. *Neoplasia.* 2015;17(9):735-741.
- Taurozzi AJ, Beekharri R, Wantoch M, et al. Spontaneous development of Epstein-Barr virus associated human lymphomas in a prostate cancer xenograft program. *PLoS One.* 2017;12(11):e0188228.
- Lin D, Wyatt AW, Xue H, et al. High fidelity patient-derived xenografts for accelerating prostate cancer discovery and drug development. *Cancer Res.* 2014;74(4):1272-1283.
- Butler KA, Hou X, Becker MA, et al. Prevention of human lymphoproliferative tumor formation in ovarian cancer patient-derived xenografts. *Neoplasia.* 2017;19(8):628-636.

34. Russell PJ, Russell P, Rudduck C, Tse BW, Williams ED, Raghavan D. Establishing prostate cancer patient derived xenografts: lessons learned from older studies. *Prostate*. 2015;75(6):628-636.
35. Moyer AM, Yu J, Sinnwell JP, et al. Spontaneous murine tumors in the development of patient-derived xenografts: a potential pitfall. *Oncotarget*. 2019;10(39):3924-3930.
36. El-Hoss J, Jing D, Evans K, et al. A single nucleotide polymorphism genotyping platform for the authentication of patient derived xenografts. *Oncotarget*. 2016;7(37):60475-60490.
37. van Weerden WM, de Ridder CM, Verdaasdonk CL, et al. Development of seven new human prostate tumor xenograft models and their histopathological characterization. *Am J Pathol*. 1996;149(3):1055-1062.
38. McCulloch DR, Opeskin K, Thompson EW, Williams ED. BM18: a novel androgen-dependent human prostate cancer xenograft model derived from a bone metastasis. *Prostate*. 2005;65(1):35-43.
39. Lawrence MG, Porter LH, Clouston D, et al. Knowing what's growing: why ductal and intraductal prostate cancer matter. *Sci Transl Med*. 2020;12(533):eaaz0152.
40. Parrish AR, Sallam K, Nyman DW, et al. Culturing precision-cut human prostate slices as an in vitro model of prostate pathobiology. *Cell Biol Toxicol*. 2002;18(3):205-219.
41. Maund SL, Nolley R, Peehl DM. Optimization and comprehensive characterization of a faithful tissue culture model of the benign and malignant human prostate. *Lab Invest*. 2014;94(2):208-221.
42. Centenera MM, Hickey TE, Jindal S, et al. A patient-derived explant (PDE) model of hormone-dependent cancer. *Mol Oncol*. 2018;12(9):1608-1622.
43. Gao D, Vela I, Sboner A, et al. Organoid cultures derived from patients with advanced prostate cancer. *Cell*. 2014;159(1):176-187.
44. Puca L, Bareja R, Prandi D, et al. Patient derived organoids to model rare prostate cancer phenotypes. *Nat Commun*. 2018;9(1):2404.
45. Chua CW, Shibata M, Lei M, et al. Single luminal epithelial progenitors can generate prostate organoids in culture. *Nat Cell Biol*. 2014;16(10):951-961, 1-4.
46. Liu X, Krawczyk E, Supryniewicz FA, et al. Conditional reprogramming and long-term expansion of normal and tumor cells from human biospecimens. *Nat Protoc*. 2017;12(2):439-451.
47. Beshiri ML, Tice CM, Tran C, et al. A PDX/organoid biobank of advanced prostate cancers captures genomic and phenotypic heterogeneity for disease modeling and therapeutic screening. *Clin Cancer Res*. 2018;24(17):4332-4345.
48. Zhang W, van Weerden WM, de Ridder CMA, et al. Ex vivo treatment of prostate tumor tissue recapitulates in vivo therapy response. *Prostate*. 2019;79(4):390-402.
49. Fong EL, Wan X, Yang J, et al. A 3D in vitro model of patient-derived prostate cancer xenograft for controlled interrogation of in vivo tumor-stromal interactions. *Biomaterials*. 2016;77:164-172.
50. Saar M, Zhao H, Nolley R, et al. Spheroid culture of LuCaP 147 as an authentic preclinical model of prostate cancer subtype with SPOP mutation and hypermutator phenotype. *Cancer Lett*. 2014;351(2):272-280.
51. Valta MP, Zhao H, Saar M, et al. Spheroid culture of LuCaP 136 patient-derived xenograft enables versatile preclinical models of prostate cancer. *Clin Exp Metastasis*. 2016;33(4):325-337.
52. Ci X, Hao J, Dong X, et al. Conditionally reprogrammed cells from patient-derived xenograft to model neuroendocrine prostate cancer development. *Cells*. 2020;9(6):1398.
53. Shokoochmand A, Ren J, Baldwin J, et al. Microenvironment engineering of osteoblastic bone metastases reveals osteomimicry of patient-derived prostate cancer xenografts. *Biomaterials*. 2019;220:119402.
54. Paindelli C, Navone N, Logothetis CJ, Friedl P, Dondossola E. Engineered bone for probing organotypic growth and therapy response of prostate cancer tumoroids in vitro. *Biomaterials*. 2019;197:296-304.
55. Davies EJ, Dong M, Gutekunst M, et al. Capturing complex tumour biology in vitro: histological and molecular characterisation of precision cut slices. *Sci Rep*. 2015;5:17187.
56. Drost J, Karthaus WR, Gao D, et al. Organoid culture systems for prostate epithelial and cancer tissue. *Nat Protoc*. 2016;11(2):347-358.
57. Shafi AA, Schiewer MJ, de Leeuw R, et al. Patient-derived models reveal impact of the tumor microenvironment on therapeutic response. *Eur Urol Oncol*. 2018;1(4):325-337.
58. Centenera MM, Raj GV, Knudsen KE, Tilley WD, Butler LM. Ex vivo culture of human prostate tissue and drug development. *Nat Rev Urol*. 2013;10(8):483-487.
59. Risbridger GP, Toivanen R, Taylor RA. Preclinical models of prostate cancer: patient-derived xenografts, organoids, and other explant models. *Cold Spring Harb Perspect Med*. 2018;8(8):a030536.
60. Jansson KH, Tucker JB, Stahl LE, et al. High-throughput screens identify HSP90 inhibitors as potent therapeutics that target inter-related growth and survival pathways in advanced prostate cancer. *Sci Rep*. 2018;8(1):17239.
61. Bruna A, Rueda OM, Greenwood W, et al. A biobank of breast cancer explants with preserved intra-tumor heterogeneity to screen anticancer compounds. *Cell*. 2016;167(1):260-274.e22.
62. Coussy F, de Koning L, Lavigne M, et al. A large collection of integrated genomically characterized patient-derived xenografts highlighting the heterogeneity of triple-negative breast cancer. *Int J Cancer*. 2019;145(7):1902-1912.
63. Nguyen HM, Vessella RL, Morrissey C, et al. LuCaP prostate cancer patient-derived xenografts reflect the molecular heterogeneity of advanced disease and serve as models for evaluating cancer therapeutics. *Prostate*. 2017;77(6):654-671.
64. Kumar A, White TA, MacKenzie AP, et al. Exome sequencing identifies a spectrum of mutation frequencies in advanced and lethal prostate cancers. *Proc Natl Acad Sci U S A*. 2011;108(41):17087-17092.
65. Palanisamy N, Yang J, Shepherd PDA, et al. The MD Anderson prostate cancer patient-derived xenograft series (MDA PCa PDX) captures the molecular landscape of prostate cancer and facilitates marker-driven therapy development. [Published online ahead of print July 30, 2020.] *Clin Cancer Res*. Doi: 10.1158/1078-0432.CCR-20-0479
66. Parolia A, Venalainen E, Xue H, et al. The long noncoding RNA HORAS5 mediates castration-resistant prostate cancer survival by activating the androgen receptor transcriptional program. *Mol Oncol*. 2019;13(5):1121-1136.

67. Ramnarine VR, Alshalalfa M, Mo F, et al. The long noncoding RNA landscape of neuroendocrine prostate cancer and its clinical implications. *Gigascience*. 2018;7(6):guy050.
68. Nabavi N, Saidy NRN, Venalainen E, et al. miR-100-5p inhibition induces apoptosis in dormant prostate cancer cells and prevents the emergence of castration-resistant prostate cancer. *Sci Rep*. 2017;7(1):4079.
69. Lin D, Ettinger SL, Qu S, et al. Metabolic heterogeneity signature of primary treatment-naïve prostate cancer. *Oncotarget*. 2017;8(16):25928-25941.
70. Savage P, Pacis A, Kuasne H, et al. Chemogenomic profiling of breast cancer patient-derived xenografts reveals targetable vulnerabilities for difficult-to-treat tumors. *Commun Biol*. 2020;3(1):310.
71. DeRose YS, Wang G, Lin YC, et al. Tumor grafts derived from women with breast cancer authentically reflect tumor pathology, growth, metastasis and disease outcomes. *Nat Med*. 2011;17(11):1514-1520.
72. Woo XY, Giordano J, Srivastava A, et al. PDXNET Consortium & EurOPDX Consortium. Abstract 1673: Conservation of copy number profiles during engraftment and passaging of patient-derived cancer xenografts. *Cancer Res*. 2020;80(16 Supplement):1673.
73. Ben-David U, Ha G, Tseng YY, et al. Patient-derived xenografts undergo mouse-specific tumor evolution. *Nat Genet*. 2017;49(11):1567-1575.
74. Eirew P, Steif A, Khattra J, et al. Dynamics of genomic clones in breast cancer patient xenografts at single-cell resolution. *Nature*. 2015;518(7539):422-426.
75. Ben-David U, Beroukhi R, Golub TR. Genomic evolution of cancer models: perils and opportunities. *Nat Rev Cancer*. 2019;19(2):97-109.
76. Mo F, Lin D, Takhar M, et al. Stromal gene expression is predictive for metastatic primary prostate cancer. *Eur Urol*. 2018;73(4):524-532.
77. Kohli M, Wang L, Xie F, et al. Mutational landscapes of sequential prostate metastases and matched patient derived xenografts during enzalutamide therapy. *PLoS One*. 2015;10(12):e0145176.
78. Alsop K, Thorne H, Sandhu S, et al; Melbourne Melanoma Project; Australian Ovarian Cancer Study Group (AOCS); Kathleen Cuninghame Foundation Consortium for Research into Familial Breast Cancer (kConFab). A community-based model of rapid autopsy in end-stage cancer patients. *Nat Biotechnol*. 2016;34(10):1010-1014.
79. Ellis WJ, Vessella RL, Buhler KR, et al. Characterization of a novel androgen-sensitive, prostate-specific antigen-producing prostatic carcinoma xenograft: LuCaP 23. *Clin Cancer Res*. 1996;2(6):1039-1048.
80. Rubin MA, Putzi M, Mucci N, et al. Rapid ("warm") autopsy study for procurement of metastatic prostate cancer. *Clin Cancer Res*. 2000;6(3):1038-1045.
81. Pisapia DJ, Salvatore S, Pauli C, et al. Next-generation rapid autopsies enable tumor evolution tracking and generation of pre-clinical models. [Published online ahead of print June 14, 2017.] *JCO Precis Oncol*. 2017;2017. Doi: 10.1200/PO.16.00038
82. Michiel Sedelaar JP, Dalrymple SS, Isaacs JT. Of mice and men—warning: intact versus castrated adult male mice as xenograft hosts are equivalent to hypogonadal versus abiraterone treated aging human males, respectively. *Prostate*. 2013;73(12):1316-1325.
83. Marques RB, van Weerden WM, Erkens-Schulze S, et al. The human PC346 xenograft and cell line panel: a model system for prostate cancer progression. *Eur Urol*. 2006;49(2):245-257.
84. Nagabhushan M, Miller CM, Pretlow TP, et al. CWR22: the first human prostate cancer xenograft with strongly androgen-dependent and relapsed strains both in vivo and in soft agar. *Cancer Res*. 1996;56(13):3042-3046.
85. Cottu P, Bièche I, Assayag F, et al. Acquired resistance to endocrine treatments is associated with tumor-specific molecular changes in patient-derived luminal breast cancer xenografts. *Clin Cancer Res*. 2014;20(16):4314-4325.



Minerva Access is the Institutional Repository of The University of Melbourne

Author/s:

Risbridger, GP; Lawrence, MG; Taylor, RA

Title:

PDX: Moving Beyond Drug Screening to Versatile Models for Research Discovery

Date:

2020-11-01

Citation:

Risbridger, G. P., Lawrence, M. G. & Taylor, R. A. (2020). PDX: Moving Beyond Drug Screening to Versatile Models for Research Discovery. JOURNAL OF THE ENDOCRINE SOCIETY, 4 (11), <https://doi.org/10.1210/jendso/bvaa132>.

Persistent Link:

<http://hdl.handle.net/11343/277767>

File Description:

Published version

License:

CC BY