

# Evolutionary Analysis of Classical *HLA* Class I and II Genes Suggests That Recent Positive Selection Acted on *DPB1\*04:01* in Japanese Population

Minae Kawashima<sup>1\*</sup>, Jun Ohashi<sup>2\*</sup>, Nao Nishida<sup>1,3</sup>, Katsushi Tokunaga<sup>1</sup>

**1** Department of Human Genetics, Graduate School of Medicine, The University of Tokyo, Tokyo, Japan, **2** Molecular and Genetic Epidemiology, Faculty of Medicine, University of Tsukuba, Ibaraki, Japan, **3** The Research Center for Hepatitis and Immunology, National Center for Global Health and Medicine, Ichikawa, Chiba, Japan

## Abstract

The human leukocyte antigen (*HLA*) genes exhibit the highest degree of polymorphism in the human genome. This high degree of variation at classical *HLA* class I and class II loci has been maintained by balancing selection for a long evolutionary time. However, little is known about recent positive selection acting on specific *HLA* alleles in a local population. To detect the signature of recent positive selection, we genotyped six *HLA* loci, *HLA-A*, *HLA-B*, *HLA-C*, *HLA-DRB1*, *HLA-DQB1*, and *HLA-DPB1* in 418 Japanese subjects, and then assessed the haplotype homozygosity (*HH*) of each *HLA* allele. There were 120 *HLA* alleles across the six loci. Among the 80 *HLA* alleles with frequencies of more than 1%, *DPB1\*04:01*, which had a frequency of 6.1%, showed exceptionally high *HH* (0.53). This finding raises the possibility that recent positive selection has acted on *DPB1\*04:01*. The *DPB1\*04:01* allele, which was present in the most common 6-locus *HLA* haplotype (4.4%), *A\*33:03-C\*14:03-B\*44:03-DRB1\*13:02-DQB1\*06:04-DPB1\*04:01*, seems to have flowed from the Korean peninsula to the Japanese archipelago in the Yayoi period. A stochastic simulation approach indicated that the strong linkage disequilibrium between *DQB1\*06:04* and *DPB1\*04:01* observed in Japanese cannot be explained without positive selection favoring *DPB1\*04:01*. The selection coefficient of *DPB1\*04:01* was estimated as 0.041 (95% credible interval 0.021–0.077). Our results suggest that *DPB1\*04:01* has recently undergone strong positive selection in Japanese population.

**Citation:** Kawashima M, Ohashi J, Nishida N, Tokunaga K (2012) Evolutionary Analysis of Classical *HLA* Class I and II Genes Suggests That Recent Positive Selection Acted on *DPB1\*04:01* in Japanese Population. PLoS ONE 7(10): e46806. doi:10.1371/journal.pone.0046806

**Editor:** Henry Harpending, University of Utah, United States of America

**Received:** May 2, 2012; **Accepted:** September 10, 2012; **Published:** October 3, 2012

**Copyright:** © 2012 Kawashima et al. This is an open-access article distributed under the terms of the Creative Commons Attribution License, which permits unrestricted use, distribution, and reproduction in any medium, provided the original author and source are credited.

**Funding:** This work was supported by National Bioscience Database Center (NBDC) of Japan Science and Technology Agency (JST), by KAKENHI (22133008) Grant-in-Aid for Scientific Research from the Ministry of Education, Culture, Sports, Science, and Technology of Japan, and by KAKENHI (23133502) Grant-in-Aid for Scientific Research on Innovative Areas. The funders had no role in study design, data collection and analysis, decision to publish, or preparation of the manuscript.

**Competing Interests:** The authors have declared that no competing interests exist.

\* E-mail: mina-e@umin.ac.jp (MK); juno-ty@umin.ac.jp (JO)

## Introduction

The crucial immunological function of human leukocyte antigen (*HLA*) molecules is to present pathogen-derived antigenic peptides to T lymphocytes [1]. The *HLA* proteins are encoded by genes in the major histocompatibility complex region, which spans approximately 4 megabases (Mb) on the short arm of chromosome 6 (6p21.3) and includes the most polymorphic loci in the human genome [2]. A remarkable feature of the classical *HLA* class I and class II genes is the high degree of polymorphism. More than 1,750 *HLA-A*, 2,330 *HLA-B*, 1,300 *HLA-C*, 1,060 *HLA-DRB1*, 160 *HLA-DQB1*, and 150 *HLA-DPB1* alleles have been reported (IMGT/*HLA* database; <http://www.ebi.ac.uk/imgt/hla/>).

Positive selection has been shown as a driving force for the high degree of polymorphism at *HLA* loci [3,4]. The *HLA* genes show three remarkable signatures of positive selection: (1) the rate of nonsynonymous (amino acid altering) nucleotide substitution is substantially higher than that of synonymous substitution at antigen-recognition sites [5,6], (2) there are trans-species polymorphisms (i.e., similar alleles are present in multiple species) [7], and (3) there is a significant excess of heterozygosity [8,9]. Balancing selection, including overdominant selection and fre-

quency-dependent selection, can easily account for these observations [3,4].

A number of studies have reported common long-range *HLA* haplotypes [10–16]. The extended length of common haplotype is a key feature of recent positive selection [17,18]. The *HLA* alleles on long-range haplotypes may have been subject to recent positive selection. In this study, to identify the signature of recent positive selection that has acted on specific *HLA* alleles in a local (i.e., geographically restricted) population, we investigated the allele frequencies and haplotype frequencies at *HLA-A*, *HLA-C*, *HLA-B*, *HLA-DRB1*, *HLA-DQB1*, and *HLA-DPB1* in 418 Japanese individuals. Our theoretical and computer simulation analyses suggested that *DPB1\*04:01* has recently undergone strong positive selection in Japanese population.

## Results

### *HLA* Class I and Class II Alleles in Japanese

The genotypes of six *HLA* genes (three class I and three class II genes) were determined for each of 418 Japanese individuals. The frequencies of the 67 alleles found at the three *HLA* class I genes are listed in Table 1. Of the 17 *HLA-A* alleles, two—*A\*02:01* and *A\*24:02*—had frequencies higher than 10% (10.2 and 37.7 percent,

respectively). Of the 17 *HLA-C* alleles, four—*C\*01:02*, *C\*03:03*, *C\*03:04*, and *C\*07:02*—had frequencies higher than 10%: 16.5, 13.5, 12.6, and 14.5 percent, respectively. There were 33 *HLA-B* alleles, and not one had an allele frequency greater than 10%. The allele with the highest frequency (9.6%) was *B\*52:01*; this allele was followed by *B\*15:01* (8.5%), *B\*51:01* (8.5%), *B\*44:03* (8.1%), and *B\*35:01* (8.0%).

The frequencies of 53 alleles at three *HLA* class II genes are listed in Table 2. Of the 27 alleles at the *HLA-DRB1* locus, two—*DRB1\*09:01* and *DRB1\*04:05*—had frequencies of more than 10% (15.2% and 14.6%, respectively), and five—*DRB1\*15:02* (8.4%), *DRB1\*15:01* (8.0%), *DRB1\*13:02* (7.8%), *DRB1\*08:03* (7.5%),

and *DRB1\*01:01* (6.8%)—were also common. Of the 14 alleles at *HLA-DQB1*, four—*DQB1\*03:03*, *DQB1\*06:01*, *DQB1\*04:01*, and *DQB1\*03:01*—were observed at frequencies of greater than 10% (15.9%, 15.9%, 14.6%, and 11.8%, respectively). There were four other common alleles at *HLA-DQB1-DQB1\*03:02* (9.2%), *DQB1\*06:02* (7.8%), *DQB1\*05:01*, and *DQB1\*06:04* (7.5%). Of the six *HLA* loci genotyped, *HLA-DPB1* had the fewest alleles with just 12. The *DPB1\*05:01* (38.5%) and *DPB1\*02:01* (25.1%) alleles were the most frequent alleles at this locus.

Of the six *HLA* loci examined, the *HLA-B* locus showed the highest heterozygosity (0.937), and *HLA-DPB1* showed the lowest (0.765) (Tables 1 and 2). None of the *HLA* class I or II loci

**Table 1.** Frequencies of *HLA* class I alleles.

HLA-A						HLA-C						HLA-B					
Allele	Count	Freq.	H <sup>a</sup>	HWE <sup>b</sup>	EW <sup>c</sup>	Allele	Count	Freq.	H <sup>a</sup>	HWE <sup>b</sup>	EW <sup>c</sup>	Allele	Count	Freq.	H <sup>a</sup>	HWE <sup>b</sup>	EW <sup>c</sup>
				P-val	P-val					P-val	P-val					P-val	P-val
<i>A*01:01</i>	10	0.012	0.810	0.667	0.294	<i>C*01:02</i>	138	0.165	0.891	0.919	0.003	<i>B*07:02</i>	57	0.068	0.937	0.286	0.002
<i>A*02:01</i>	85	0.102				<i>C*01:03</i>	4	0.005				<i>B*13:01</i>	13	0.016			
<i>A*02:06</i>	61	0.073				<i>C*03:02</i>	3	0.004				<i>B*15:01</i>	71	0.085			
<i>A*02:07</i>	23	0.028				<i>C*03:03</i>	113	0.135				<i>B*15:07</i>	5	0.006			
<i>A*02:10</i>	2	0.002				<i>C*03:04</i>	105	0.126				<i>B*15:11</i>	5	0.006			
<i>A*03:01</i>	4	0.005				<i>C*04:01</i>	42	0.050				<i>B*15:18</i>	13	0.016			
<i>A*03:02</i>	1	0.001				<i>C*05:01</i>	5	0.006				<i>B*15:27</i>	1	0.001			
<i>A*11:01</i>	80	0.096				<i>C*06:02</i>	7	0.008				<i>B*15:28</i>	1	0.001			
<i>A*24:02</i>	315	0.377				<i>C*07:02</i>	121	0.145				<i>B*27:04</i>	2	0.002			
<i>A*24:08</i>	1	0.001				<i>C*07:04</i>	7	0.008				<i>B*35:01</i>	67	0.080			
<i>A*24:20</i>	10	0.012				<i>C*08:01</i>	47	0.056				<i>B*37:01</i>	7	0.008			
<i>A*26:01</i>	67	0.080				<i>C*08:03</i>	12	0.014				<i>B*39:01</i>	34	0.041			
<i>A*26:02</i>	12	0.014				<i>C*12:02</i>	81	0.097				<i>B*39:04</i>	5	0.006			
<i>A*26:03</i>	22	0.026				<i>C*12:03</i>	1	0.001				<i>B*40:01</i>	46	0.055			
<i>A*26:05</i>	1	0.001				<i>C*14:02</i>	50	0.060				<i>B*40:02</i>	57	0.068			
<i>A*31:01</i>	66	0.079				<i>C*14:03</i>	69	0.083				<i>B*40:03</i>	7	0.008			
<i>A*33:03</i>	76	0.091				<i>C*15:02</i>	31	0.037				<i>B*40:06</i>	34	0.041			
												<i>B*40:52</i>	1	0.001			
												<i>B*44:02</i>	5	0.006			
												<i>B*44:03</i>	68	0.081			
												<i>B*46:01</i>	38	0.045			
												<i>B*48:01</i>	22	0.026			
												<i>B*51:01</i>	71	0.085			
												<i>B*51:02</i>	4	0.005			
												<i>B*52:01</i>	80	0.096			
												<i>B*54:01</i>	64	0.077			
												<i>B*55:02</i>	20	0.024			
												<i>B*55:04</i>	1	0.001			
												<i>B*56:01</i>	5	0.006			
												<i>B*56:03</i>	2	0.002			
												<i>B*58:01</i>	3	0.004			
												<i>B*59:01</i>	16	0.019			
												<i>B*67:01</i>	11	0.013			

<sup>a</sup>Heterozygosity.

<sup>b</sup>Hardy-Weinberg equilibrium test.

<sup>c</sup>Ewens-Watterson test.

doi:10.1371/journal.pone.0046806.t001

**Table 2.** Frequencies of *HLA* class II alleles.

<i>HLA-DRB1</i>						<i>HLA-DQB1</i>						<i>HLA-DPB1</i>					
Allele	Count	Freq.	H <sup>a</sup>	HWE <sup>b</sup>	EW <sup>c</sup>	Allele	Count	Freq.	H <sup>a</sup>	HWE <sup>b</sup>	EW <sup>c</sup>	Allele	Count	Freq.	H <sup>a</sup>	HWE <sup>b</sup>	EW <sup>c</sup>
				P-val	P-val					P-val	P-val					P-val	P-val
<i>DRB1*01:01</i>	57	0.068	0.918	0.247	0.013	<i>DQB1*02:01</i>	1	0.001	0.885	0.222	0.001	<i>DPB1*02:01</i>	210	0.251	0.765	0.398	0.225
<i>DRB1*03:01</i>	1	0.001				<i>DQB1*03:01</i>	99	0.118				<i>DPB1*02:02</i>	35	0.042			
<i>DRB1*04:01</i>	10	0.012				<i>DQB1*03:02</i>	77	0.092				<i>DPB1*03:01</i>	36	0.043			
<i>DRB1*04:03</i>	24	0.029				<i>DQB1*03:03</i>	133	0.159				<i>DPB1*04:01</i>	51	0.061			
<i>DRB1*04:04</i>	2	0.002				<i>DQB1*04:01</i>	122	0.146				<i>DPB1*04:02</i>	83	0.099			
<i>DRB1*04:05</i>	122	0.146				<i>DQB1*04:02</i>	26	0.031				<i>DPB1*05:01</i>	322	0.385			
<i>DRB1*04:06</i>	28	0.033				<i>DQB1*05:01</i>	63	0.075				<i>DPB1*06:01</i>	5	0.006			
<i>DRB1*04:07</i>	1	0.001				<i>DQB1*05:02</i>	17	0.020				<i>DPB1*09:01</i>	65	0.078			
<i>DRB1*04:10</i>	12	0.014				<i>DQB1*05:03</i>	30	0.036				<i>DPB1*13:01</i>	12	0.014			
<i>DRB1*08:02</i>	32	0.038				<i>DQB1*06:01</i>	133	0.159				<i>DPB1*14:01</i>	10	0.012			
<i>DRB1*08:03</i>	63	0.075				<i>DQB1*06:02</i>	65	0.078				<i>DPB1*19:01</i>	5	0.006			
<i>DRB1*09:01</i>	127	0.152				<i>DQB1*06:03</i>	5	0.006				<i>DPB1*41:01</i>	2	0.002			
<i>DRB1*10:01</i>	6	0.007				<i>DQB1*06:04</i>	63	0.075									
<i>DRB1*11:01</i>	23	0.028				<i>DQB1*06:09</i>	2	0.002									
<i>DRB1*12:01</i>	30	0.036															
<i>DRB1*12:02</i>	18	0.022															
<i>DRB1*13:01</i>	5	0.006															
<i>DRB1*13:02</i>	65	0.078															
<i>DRB1*14:02</i>	1	0.001															
<i>DRB1*14:03</i>	11	0.013															
<i>DRB1*14:05</i>	17	0.020															
<i>DRB1*14:06</i>	13	0.016															
<i>DRB1*14:07</i>	3	0.004															
<i>DRB1*14:54</i>	26	0.031															
<i>DRB1*15:01</i>	67	0.080															
<i>DRB1*15:02</i>	70	0.084															
<i>DRB1*16:02</i>	2	0.002															

<sup>a</sup>Heterozygosity.<sup>b</sup>Hardy-Weinberg equilibrium test.<sup>c</sup>Ewens-Watterson test.

doi:10.1371/journal.pone.0046806.t002

exhibited significant deviation from HWE. Results of a Ewens-Watterson neutrality test [19,20] of *HLA* allele frequencies in this study population revealed that the observed distributions of allele frequencies at *HLA-C* ( $P=0.003$ ), *HLA-B* ( $P=0.002$ ), *HLA-DRB1* ( $P=0.013$ ), and *HLA-DQB1* ( $P=0.001$ ) differed significantly (i.e., there was excess heterozygosity) from the distributions expected based on the assumption of neutrality, whereas there was no significant difference between the expected and observed distributions of allele frequencies at *HLA-A* or *HLA-DPB1* (Tables 1 and 2).

### Pairwise LD between *HLA* Alleles

The pairwise linkage disequilibrium (LD) parameters,  $r^2$  and  $|D'|$  [21], for each possible pair of two *HLA* alleles were estimated (Figure 1 and Data S1). Most alleles at *HLA-A* were not in strong LD with any of the alleles at the other loci because the physical distance from *HLA-A* to each of the other loci is large. To evaluate the relative strength of LD between two *HLA* loci, 2-locus  $r^2$  and 2-locus  $|D'|$  (see Materials and Methods for details), were calculated

based on the pairwise LD parameters for all the allelic pairs (Table S1). The values of 2-locus  $|D'|$  for *HLA-C* and *HLA-B* ( $|D'|=0.91$ ) and for *HLA-DRB1* and *HLA-DQB1* ( $|D'|=0.80$ ) were high, whereas the lowest 2-locus  $|D'|$  value was observed for *HLA-A* and *HLA-DPB1* ( $|D'|=0.25$ ). These values reflected the physical distances between the respective loci. The values of 2-locus  $|D'|$  for *HLA-DRB1* and *HLA-DPB1* and for *HLA-DQB1* and *HLA-DPB1* were relatively low compared to the values for the other pairs (Figure 2). These low values probably result from the recombination hotspot in the *HLA* class II region [22–24].

### Major 6-locus *HLA* Haplotypes in Japanese

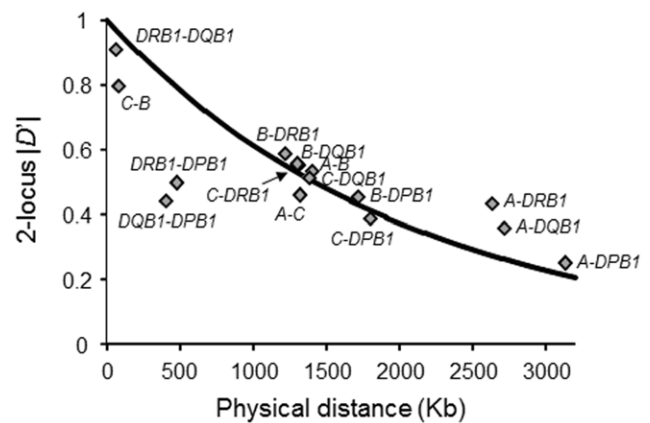
Frequencies of multi-locus haplotypes were estimated using the PHASE program [25,26] (Table 3 and Tables S2, S3, S4, S5). In 418 Japanese subjects (i.e., 839 chromosomes), 489 different 6-locus *HLA* haplotypes were inferred. Based on the frequencies of 6-locus *HLA* haplotypes, the probability of selecting two identical 6-locus *HLA* haplotypes at random from the Japanese population was estimated as 0.0075. Six 6-locus *HLA* haplotypes had

frequencies higher than 1% (Table 3). Of these, *A\*33:03-C\*14:03-B\*44:03-DRB1\*13:02-DQB1\*06:04-DPB1\*04:01* was the most common (4.4%).

The intensity of recombination in the *HLA* region has been estimated at 0.67 cM/Mb [27], which corresponds to a recombination fraction of approximately 2% between *HLA-A* and *HLA-DPB1*. Thus, association between the six *HLA* alleles in any 6-locus *HLA* haplotype is not generally strong due to the frequent recombination in the *HLA* region. The expected frequency of the *A\*33:03-C\*14:03-B\*44:03-DRB1\*13:02-DQB1\*06:04-DPB1\*04:01* haplotype is  $2.5 \times 10^{-7}$  under the assumption of linkage equilibrium, which is much smaller than the observed frequency of 0.044. The strong LD among *HLA* alleles on the *A\*33:03-C\*14:03-B\*44:03-DRB1\*13:02-DQB1\*06:04-DPB1\*04:01* haplotype may result from recent positive selection acting on one of *HLA* alleles on the haplotype, although other mechanisms such as neutral random genetic drift, recent admixture, recent migration, recent bottlenecks, and suppression of recombination can also cause the strong LD [10,12,13,15,16].

### Haplotype Omozygosity

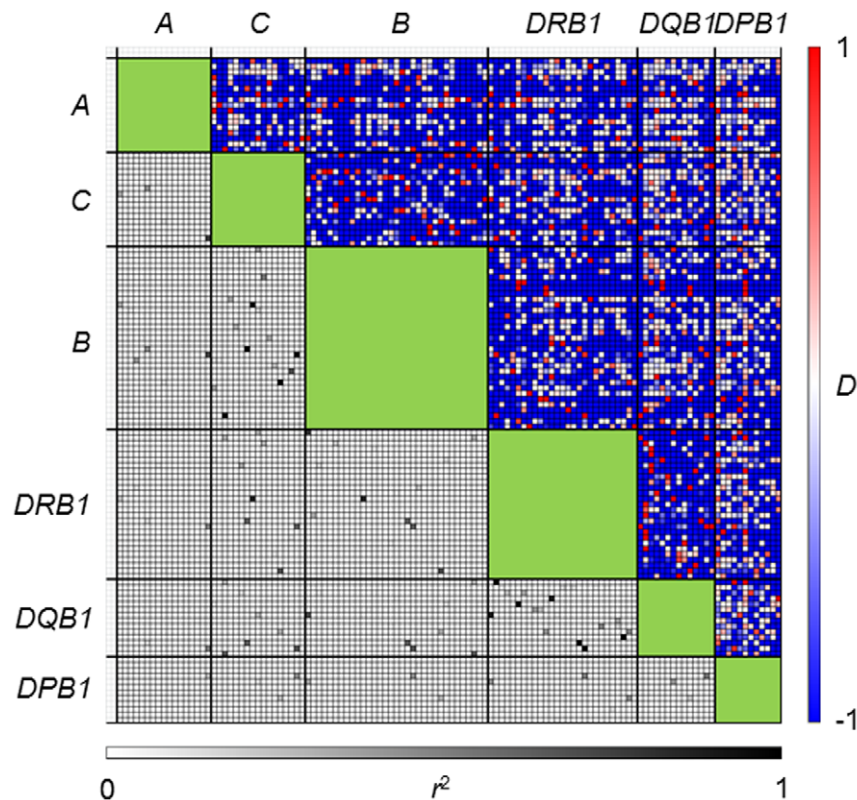
Strong positive selection leads to a rapid increase in the frequency of a selected (target) allele in a population. The number of recombination events between the target allele and the surrounding polymorphic sites is limited while the advantageous allele increases in frequency; therefore, the diversity of haplotypes carrying the advantageous allele becomes low. Accordingly, strong LD is expected in the genomic region bearing the selected allele. In this study, the degree of LD for each *HLA* allele was measured by haplotype homozygosity (*HH*); this term is defined as the probability that any two randomly chosen samples of haplotype



**Figure 2. Relationship between two-locus  $|D'|$  and physical distance (Kb).** A solid-line curve,  $2\text{-locus}|D'| = (1 - 0.67 \times 10^{-5} \times x)^{75.13}$ , was obtained using the least-squares method, where  $x$  represents the physical distance (Kb). The recombination rate in the *HLA* region was assumed to be 0.67 cM/Mb [27]. Spearman's rank correlation coefficient between 2-locus  $|D'|$  and the physical distance was  $-0.8607$  ( $P < 0.0001$ ).  
doi:10.1371/journal.pone.0046806.g002

bearing a focal *HLA* allele have the same 6-locus *HLA* haplotype. Like *EHH* [17], a high *HH* value can be regarded as a signature of recent positive selection acting on a focal *HLA* allele.

To detect *HLA* alleles that have been subject to recent positive selection, *HH* was calculated for each allele based on the estimated number of 6-locus haplotypes in 418 Japanese subjects. Of the 80



**Figure 1. Pairwise estimates of LD parameters,  $|D'|$  (upper diagonal) and  $r^2$  (lower diagonal) for every pair of *HLA* alleles.** The name of each allele is presented in Data S1.  
doi:10.1371/journal.pone.0046806.g001

**Table 3.** Estimated frequencies of 6-locus *HLA* haplotypes.

Association						# of haplotypes <sup>a</sup>	HF <sup>b</sup>
<i>A*33:03</i>	<i>C*14:03</i>	<i>B*44:03</i>	<i>DRB1*13:02</i>	<i>DQB1*06:04</i>	<i>DPB1*04:01</i>	37	0.044
<i>A*24:02</i>	<i>C*12:02</i>	<i>B*52:01</i>	<i>DRB1*15:02</i>	<i>DQB1*06:01</i>	<i>DPB1*09:01</i>	33	0.039
<i>A*24:02</i>	<i>C*07:02</i>	<i>B*07:02</i>	<i>DRB1*01:01</i>	<i>DQB1*05:01</i>	<i>DPB1*04:02</i>	29	0.035
<i>A*24:02</i>	<i>C*01:02</i>	<i>B*54:01</i>	<i>DRB1*04:05</i>	<i>DQB1*04:01</i>	<i>DPB1*05:01</i>	13	0.016
<i>A*24:02</i>	<i>C*12:02</i>	<i>B*52:01</i>	<i>DRB1*15:02</i>	<i>DQB1*06:01</i>	<i>DPB1*02:01</i>	12	0.014
<i>A*11:01</i>	<i>C*04:01</i>	<i>B*15:01</i>	<i>DRB1*04:06</i>	<i>DQB1*03:02</i>	<i>DPB1*02:01</i>	11	0.013

<sup>a</sup>Estimated by the PHASE program version 2.1.<sup>b</sup>Haplotype frequency.

doi:10.1371/journal.pone.0046806.t003

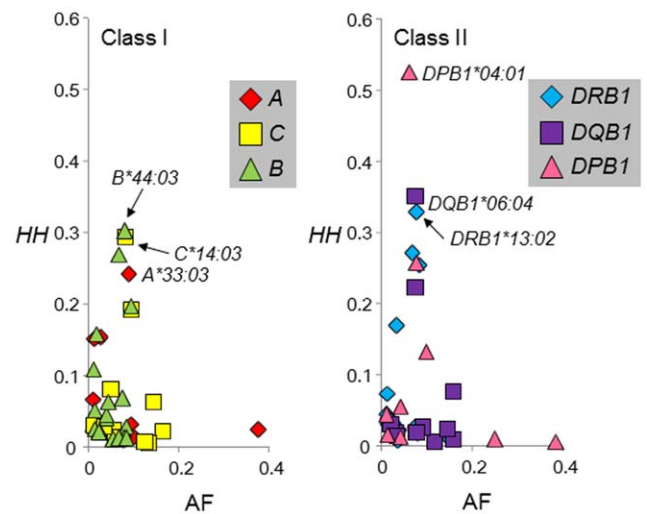
*HLA* alleles that had frequencies of more than 1%, one allele at each class I locus (*A\*33:03*, *C\*14:03*, and *B\*44:03*) had the highest *HH* for that locus; similarly, one allele at each class II locus (*DRB1\*13:02*, *DQB1\*06:04*, and *DPB1\*04:01*) had the highest *HH* for that locus (Figure 3). These six *HLA* alleles made up the 6-locus haplotype, *A\*33:03-C\*14:03-B\*44:03-DRB1\*13:02-DQB1\*06:04-DPB1\*04:01*, with the highest frequency in this Japanese population (Table 3).

The *HH* values are generally reduced by loci with high heterozygosity. Therefore, it was relatively difficult for an allele at *HLA-DPB1* to show high *HH*, because heterozygosities at the other loci are high. Nevertheless, the *DPB1\*04:01* allele, which had a population frequency of 6.1%, showed the highest *HH* value (0.53) of the 80 *HLA* alleles with frequencies higher than 1% (Figure 3). The values of *HH* of the remaining 79 *HLA* alleles were less than 0.33. This finding suggests that *DPB1\*04:01* had undergone recent positive selection in Japan. The large *HH* values of the five other alleles (*A\*33:03*, *C\*14:03*, *B\*44:03*, *DRB1\*13:02*, and *DQB1\*06:04*) in this 6-locus *HLA* haplotype (i.e., *A\*33:03-C\*14:03-B\*44:03-DRB1\*13:02-DQB1\*06:04-DPB1\*04:01*) appear to be due to the hitchhiking effect of *DPB1\*04:01*.

To investigate the effect of recombination on the decay of the *A\*33:03-C\*14:03-B\*44:03-DRB1\*13:02-DQB1\*06:04-DPB1\*04:01* haplotype, the value of extended haplotype homozygosity (*EHH*) was calculated for *DPB1\*04:01* (Figure 4). Although the *EHH* of *DPB1\*04:01* was reduced at *HLA-DQB1*, the decrease in *EHH* was almost negligible at *HLA-DRB1*, *HLA-B*, and *HLA-C* loci; these findings indicate that, in this haplotype, recombination mainly has occurred between *DQB1\*06:04* and *DPB1\*04:01*.

### Origin of *DPB1\*04:01* in Japanese

*DPB1\*04:01* is common (>30%) in European populations [9,28], whereas the frequency of *DPB1\*04:01* is 6.1% in Japanese (Table 2). Given the worldwide distribution of *DPB1\*04:01*, it is unlikely that *DPB1\*04:01* originated in Japan. *DPB1\*04:01* seems to have entered Japan. Archaeological studies of Japanese history have suggested that the Yayoi people came from the Korean peninsula circa 300 B.C., and mixed with the indigenous Jomon people. A recent large-scale survey of single nucleotide polymorphisms (SNPs) on autosomal chromosomes [29] revealed that most people presently inhabiting mainland Japan are genetically closer to Koreans than to Ryukuans. Ryukuans are considered to be more pure descendants of the Jomon people than are mainland Japanese. These observations indicate that a large population of Yayoi people migrated from the Korean peninsula. Although the frequency of the *A\*33:03-C\*14:03-B\*44:03-DRB1\*13:02-DQB1\*06:04-DPB1\*04:01* haplotype in Koreans has not been

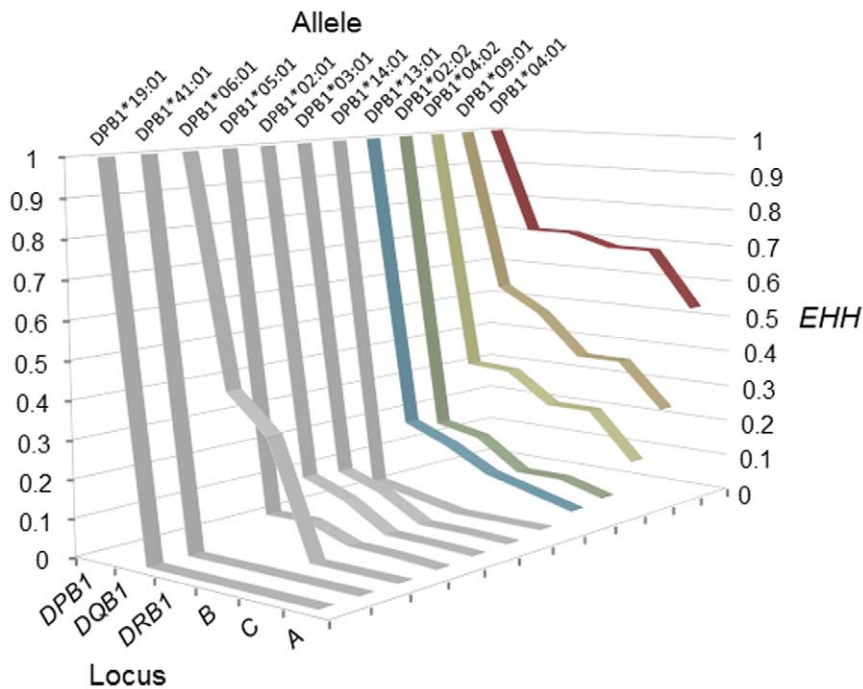


**Figure 3. Haplotype homozygosity (*HH*) × allele frequency (*AF*) of each *HLA* allele.** The left and right panels show *HH* values of *HLA* class I alleles and *HLA* class II alleles, respectively. The class I alleles were designated as follows: *HLA-A* (red diamond), *HLA-C* (yellow square), and *HLA-B* (green triangle); the class II alleles were designated as follows: *HLA-DRB1* (blue diamond), *HLA-DQB1* (purple square), and *HLA-DPB1* (pink triangle). In both panels, only *HH* values of alleles with frequencies of more than 0.01 are shown.

doi:10.1371/journal.pone.0046806.g003

reported, *DPB1\*04:01*, which was carried by *A\*33:03-C\*14:03-B\*44:03-DRB1\*13:02-DQB1\*06:04-DPB1\*04:01*, appears to have derived from the Korean population because the *A\*33:03-C\*14:03-B\*44:03-DRB1\*13:02-DQB1\*06:04* and *DRB1\*13:02-DQB1\*06:04-DPB1\*04:01* haplotypes are observed at the frequencies of 4.2% and 4.7% in Korean populations [28,30,31]. These and similar haplotypes have not been reported in other Asian populations (<http://www.allelefrequencies.net>) [28].

If the *A\*33:03-C\*14:03-B\*44:03-DRB1\*13:02-DQB1\*06:04-DPB1\*04:01* haplotype has a single origin, the current genetic diversity of this haplotype must be low. To assess the genetic diversity of this haplotype, we performed a sliding window analysis of individual heterozygosity, defined as a proportion of heterozygous SNPs to all SNPs in the window (Figure 5). Reduced individual heterozygosity was only found in the *HLA* region on the short arm of chromosome 6 in all the three subjects that were



**Figure 4. Extended HH (*EHH*)  $\times$  relative locus position for 12 *HLA-DPB1* alleles.**  
doi:10.1371/journal.pone.0046806.g004

homozygous for the *A\*33:03-C\*14:03-B\*44:03-DRB1\*13:02-DQB1\*06:04-DPB1\*04:01* haplotype (Figure 5A); in contrast, such a reduction was not observed in two subjects that were heterozygous for this haplotype (Figure 5B). Furthermore, three subjects that were homozygous for the *A\*33:03-C\*14:03-B\*44:03-DRB1\*13:02-DQB1\*06:04-DPB1\*04:01* haplotype shared the same SNP haplotype that spanned more than 4 Mb in the *HLA* region (Figure 5A). These observations suggest that the *A\*33:03-C\*14:03-B\*44:03-DRB1\*13:02-DQB1\*06:04-DPB1\*04:01* haplotype in Japanese has a single origin, and has not been generated repeatedly by recombination.

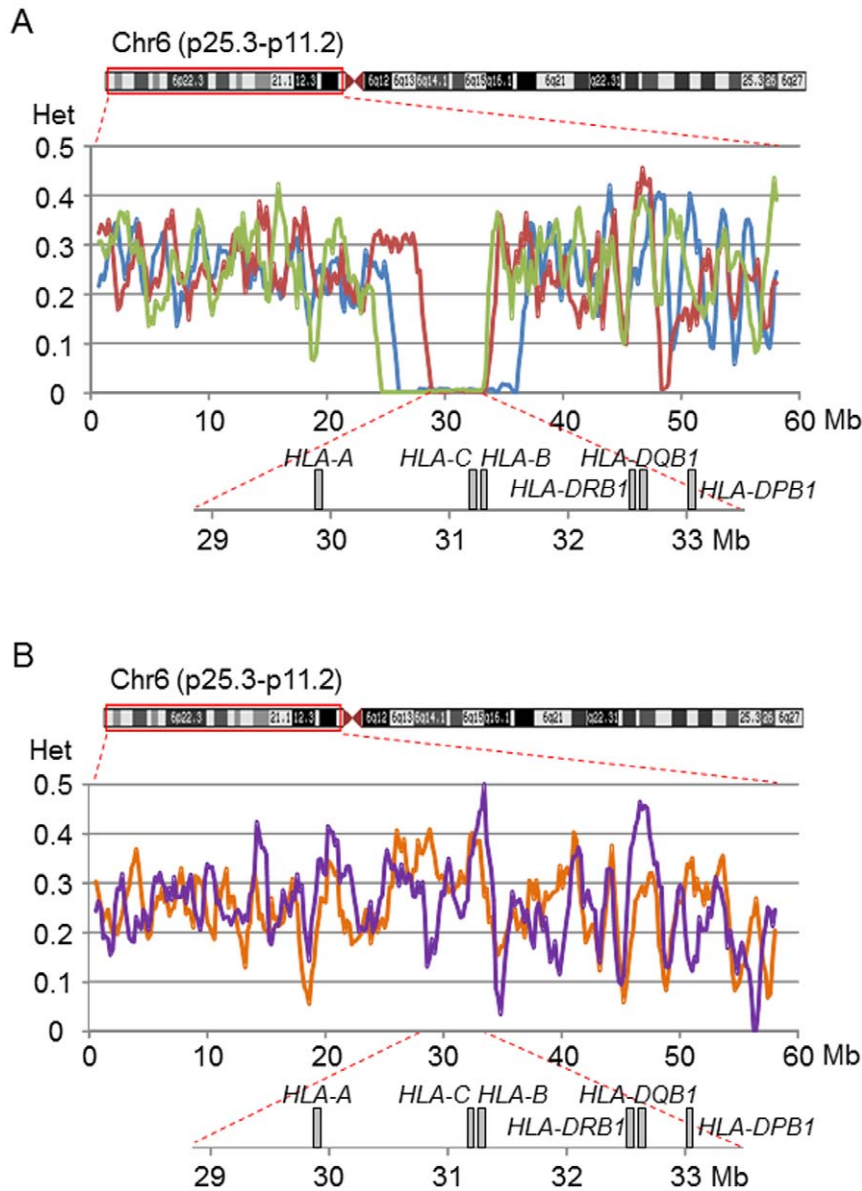
### Computer Simulation

The analysis of *EHH* revealed that the reduction in *EHH* for *DPB1\*04:01* resulted from recombination between *DQB1\*06:04* and *DPB1\*04:01* that inhabited the *A\*33:03-C\*14:03-B\*44:03-DRB1\*13:02-DQB1\*06:04-DPB1\*04:01* haplotype (Figure 4). Therefore, the relationship between *DQB1\*06:04* and *DPB1\*04:01* was focused in the following analyses. The high *HH* and *EHH* values of *DPB1\*04:01* (Figures 3 and 4) may merely reflect that a neutral random genetic drift, rather than a recent positive selection, occurred after the Yayoi people reached the Japanese archipelago (300 B.C. or 2300 years ago). To assess this possibility, we conducted a computer simulation assuming a two-locus two-allele model in which changes in the frequency of four haplotypes carrying *DPB1\*04:01* or non-*DPB1\*04:01* alleles at the *HLA-DPB1* locus and *DQB1\*06:04* or non-*DQB1\*06:04* alleles at the *HLA-DQB1* locus were evaluated. In the simulation, the values of three parameters: selection intensity,  $s$ , recombination rate,  $c$ , and frequency of *DQB1\*06:04-DPB1\*04:01* haplotype,  $f_1(0)$ , in the beginning of the Yayoi period were drawn by a random number generator in every run. Haplotype frequencies were subject to change based on a stochastic model of positive selection, recombination, and random genetic drift. Dominant selection was assumed for *DPB1\*04:01*, and, for the sake of simplicity, no

selection (i.e., selectively neutral) was assumed for all alleles at the *DQB1* locus. The rejection method [18,32,33] was applied to accept only simulation runs that gave results similar to the observed values (see Materials and Methods for details). The uniform distribution was used for each parameter as a prior distribution (see Materials and Methods for detail). Figure 6A shows 2,500 parameter sets (i.e., posterior distributions) that were accepted in these simulations. The posterior distribution of the initial frequency of *DQB1\*06:04-DPB1\*04:01* haplotype was similar to the prior one, whereas the posterior distributions of selection intensity and recombination rate were different from the prior ones. In the posterior distribution,  $s$  ranged from 0.009 to 0.098, and the mean and 95% credible interval of  $s$  were 0.041 and 0.021–0.077, respectively (Figure 6B). It should be noted that neutral random genetic drift (i.e.,  $s \approx 0$ ) did not yield the results similar to the observed values. The findings from the simulations indicated that *DPB1\*04:01* has been subject to relatively strong positive selection in Japanese since the Yayoi period.

### Discussion

A number of *HLA* alleles have been shown to be associated with variations in immune responses to infectious diseases (e.g., human immunodeficiency virus [HIV]/AIDS, malaria, tuberculosis, hepatitis, leprosy, leishmaniasis, and schistosomiasis) caused by pathogenic microorganisms (see review by Blackwell et al. [34]). The most plausible explanation for positive selection favoring *DPB1\*04:01* would be its function in resistance to infections. A recent genome-wide association study showed that the *DPB1\*01:03-DPB1\*04:01* haplotype confers protection against hepatitis B virus (HBV) infection (OR = 0.57, 95% CI = 0.33–0.96) [35]. Hepatitis B is a deadly infectious disease. Acute hepatitis B, which can cause fatal complications such as fulminant hepatitis, occurs in a percentage of the people infected with HBV. Although the estimated selection coefficient of  $s$  (0.0254–0.0550) for

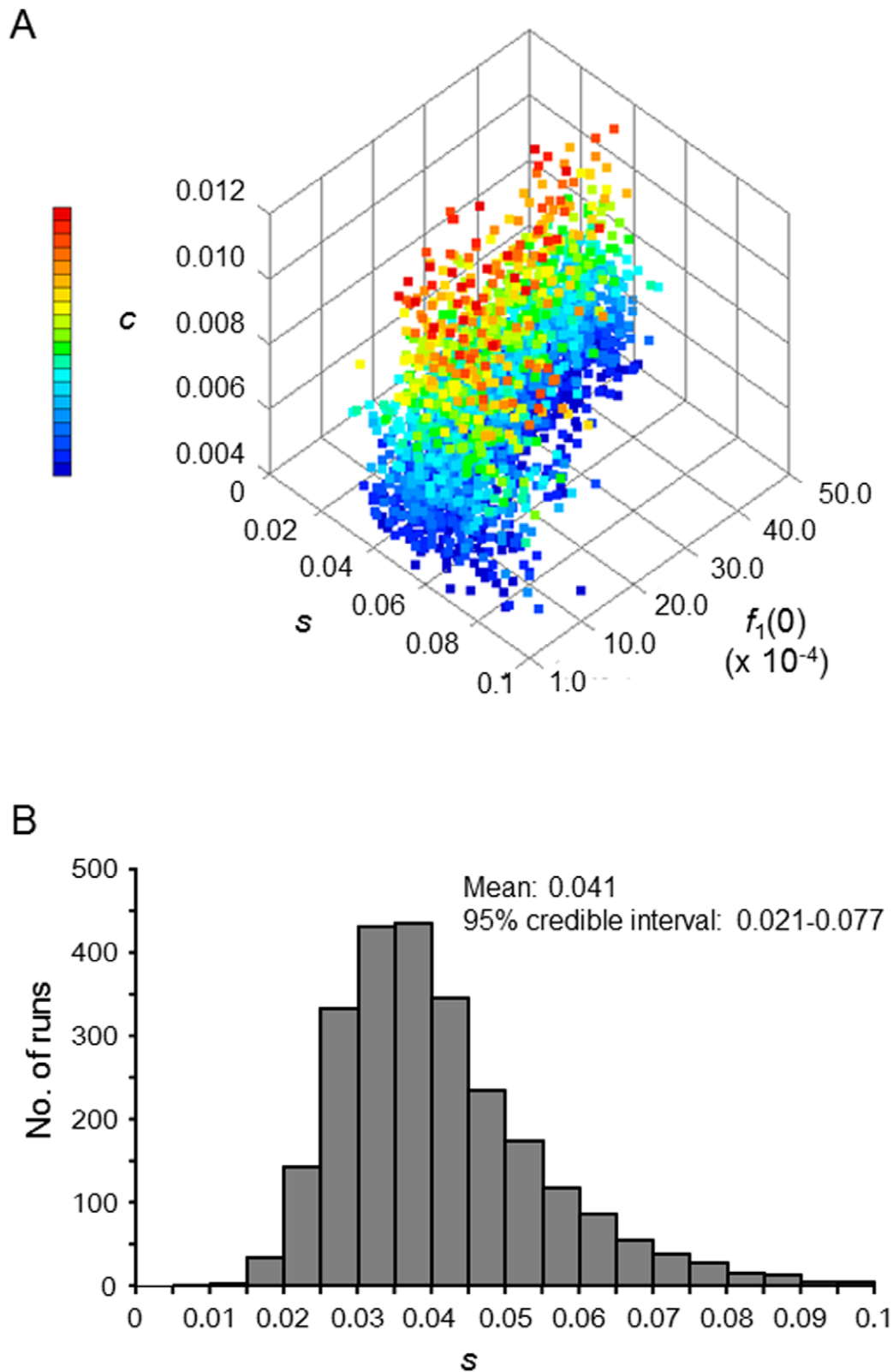


**Figure 5. Individual heterozygosity of each subject with the most common 6-locus *HLA* haplotype.** The individual heterozygosity in the genomic region on the short arm of chromosome 6 was assessed using the sliding window analysis; in this analysis, the window and step sizes were set to be 1 Mb and 200 kb, respectively. The individual heterozygosity was defined as a proportion of heterozygous SNPs to SNPs genotyped in a single subject. This analysis was performed for five Japanese subjects with the *A\*33:03-C\*14:03-B\*44:03-DRB1\*13:02-DQB1\*06:04-DPB1\*04:01* haplotype: (A) three of these five subjects were homozygous for this haplotype (blue, red, and green) and (B) two subjects had the heterozygous genotypes of the *A\*33:03-C\*14:03-B\*44:03-DRB1\*13:02-DQB1\*06:04-DPB1\*04:01* haplotype and the *A\*24:02-C\*07:02-B\*07:02-DRB1\*01:01-DQB1\*05:01-DPB1\*04:02* haplotype (orange) and of the *A\*33:03-C\*14:03-B\*44:03-DRB1\*13:02-DQB1\*06:04-DPB1\*04:01* haplotype and the *A\*24:02-C\*12:02-B\*52:01-DRB1\*15:02-DQB1\*06:01-DPB1\*09:01* haplotype (purple). doi:10.1371/journal.pone.0046806.g005

*DPB1\*04:01* does not seem to result solely from protection against infection with HBV, HBV infection may have been one of the key driving forces for the rapid increase in frequency of *DPB1\*04:01* in the Japanese population.

Here, the analysis of *HH* was used to detect a signature of recent positive selection. The advantage of using *HH* in the analysis of *HLA* genes is that alleles with similar frequencies not only at the same *HLA* locus, but also at different loci, can be compared. This feature of analyses based on *HH* allows us to compare *HLA* alleles even within the same long-range haplotype. Since the same polymorphic markers are used for all *HLA* alleles in the calculation

of *HH*, the effect of recombination on the value of *HH* can be well controlled. However, the *HH* analysis has a disadvantage in that the empirical distribution of *HH* value has to be obtained from only those alleles that are in the targeted region. Therefore, unlike conventional long-range haplotype tests based on *EHH* values [17,36], the statistical test based on *HH* values cannot be performed using genome-wide data. Nevertheless, *HH*-based test is thought to be suitable for analysis of *HLA* genes because each locus has a number of alleles to be examined and strong LD exists between alleles even at distant loci. The use of *HH* in the analysis of various human populations would help us to detect other *HLA*



**Figure 6. Estimation of model parameters for positive selection acting on *DPB1\*04:01*.** The recombination rate ( $c$ ), initial haplotype frequency ( $f_1(0)$ ), and selection coefficient ( $s$ ), were estimated by comparing the four haplotype frequencies observed in our study population with the respective values predicted via simulation. (A) Posterior distributions of the three parameters that produced simulated data that resemble the observed data. (B) Frequency distribution of  $s$  accepted in simulation runs. The mean and 95% credible interval of  $s$  are 0.041 and 0.021–0.077. doi:10.1371/journal.pone.0046806.g006



alleles that have been subject to geographically-restricted positive selection and to understand the role of *HLA* genes in the adaptation of human population to local environments over evolutionary time.

To estimate the selection coefficient of *DPB1\*04:01*, we used a simple two-locus two-allele genetic model that was based on two assumptions, directional selection at *DPB1* and selective neutrality at *HLA-DQB1*. The problem associated with the use of this model was that the Ewens-Watterson test revealed that the allele frequency distribution at *HLA-DQB1* in this study population deviated significantly from that expected under neutrality (Table 2); therefore, the assumption of selective neutrality at *HLA-DQB1* may not be valid. If balancing selection is operating at *HLA-DQB1*, the allele frequency of *DQB1\*06:04* is maintained at a certain frequency, and the change in the allele frequency of *DPB1\*04:01* must be influenced by this selection at *HLA-DQB1*, although the effect of balancing selection at *HLA-DQB1* on the estimation of  $s$  is considered to be much smaller than that of directional selection favoring *DPB1\*04:01*.

In this study, six *HLA* loci were investigated in 418 Japanese subjects. Of *HLA* alleles with high population frequencies, *DPB1\*04:01*, which was present in the most common 6-locus *HLA* haplotype spanning more than 4 Mb, showed exceptionally high *HH*. A computer simulation estimated the selection coefficient of *DPB1\*04:01* as 0.041. Taken together with high *HH* value of *DPB1\*04:01*, we conclude that *DPB1\*04:01* has recently undergone strong positive selection in Japanese population.

## Materials and Methods

### Subjects

All 418 individuals investigated in this study were unrelated Japanese adults living in Tokyo or neighboring areas. The genomic DNAs were extracted from peripheral blood samples using a commercial kit (QIAamp Blood Kit [Qiagen, Hilden, Germany]). All blood and DNA samples were de-identified. Verbal informed consent was obtained from all the participants before 1990. In this study, written informed consent was not obtained because the blood sampling was conducted before the “Ethical Guidelines for Human Genome and Genetic Sequencing Research” were established in Japan. Under the condition that DNA sample is permanently de-linked from the individual, this study was approved by the Research Ethics Committee of the Faculty of Medicine, University of Tokyo.

### HLA Typing

DNA typing of *HLA* alleles was performed by HLA LABORATORY (Kyoto, Japan) using a Luminex Multi-Analyte profiling system (xMAP; Luminex, Austin, TX, USA) [37].

### SNP Typing

Five Japanese subjects who had at least one *A\*33:03-C\*14:03-B\*44:03-DRB1\*13:02-DQB1\*06:04-DPB1\*04:01* haplotype were genotyped using the Axiom™ Genome-Wide ASI 1 Array Plate (Affymetrix Inc., Santa Clara, CA, USA). Of five subjects, three subjects were homozygous for the *A\*33:03-C\*14:03-B\*44:03-DRB1\*13:02-DQB1\*06:04-DPB1\*04:01* haplotype and two subjects had the heterozygous genotypes of the *A\*33:03-C\*14:03-B\*44:03-DRB1\*13:02-DQB1\*06:04-DPB1\*04:01* haplotype and the *A\*24:02-C\*07:02-B\*07:02-DRB1\*01:01-DQB1\*05:01-DPB1\*04:02* haplotype and of the *A\*33:03-C\*14:03-B\*44:03-DRB1\*13:02-DQB1\*06:04-DPB1\*04:01* haplotype and the *A\*24:02-C\*12:02-B\*52:01-DRB1\*15:02-DQB1\*06:01-DPB1\*09:01* haplotype.

## Statistical Analysis

Deviation from HWE for each *HLA* locus was tested using an exact test available in a web-based software, Genepop 4.0.10 [38]. Using Arlequin version 3.5 [39], the Ewens-Watterson test [40], which is based on Ewens sampling theory of neutral alleles [19], was performed to assess whether the observed distribution of allele frequencies at each *HLA* locus was different from an expectation that was based on neutrality.

To evaluate the degree of LD between *HLA* alleles, values of  $r^2$  and  $D'$  [21] for all pairwise combinations of *HLA* alleles were calculated based on the haplotype frequencies estimated using the expectation maximization algorithm [20]. Here, each *HLA* allele was regarded as a single nucleotide polymorphism (SNP). For example, the *A\*01:01* allele and the other alleles at the *HLA-A* locus were designated as “A” and “G”, respectively. Accordingly, the algorithm for the estimation of haplotype frequencies for two loci, each with two alleles, could be applied to the *HLA* loci with multiple alleles for the purposes of these pairwise comparisons.

The LD parameter, 2-locus  $|D'|$ , between any two *HLA* loci (locus 1 and locus 2) was calculated based on the pairwise LD parameter,  $D'_{ij}$ , between  $i$ th allele at locus 1 and  $j$ th allele at locus 2 as follows: 2-locus  $|D'| = \frac{\sum_{i=1}^m \sum_{j=1}^n p_i q_j |D'_{ij}|}{\sum_{i=1}^m p_i \sum_{j=1}^n q_j}$ , where  $p_i$  and  $q_j$  represent the frequencies of  $i$ th allele at locus 1 with  $m$  different alleles and  $j$ th allele at locus 2 with  $n$  different alleles. Spearman's rank correlation coefficient between 2-locus  $|D'|$  and the physical distance was calculated. Assuming a model: 2-locus  $|D'| = (1 - 0.67 \times 10^{-5} \times x)^a$ , the curve fitting model parameter,  $a$ , was estimated using the least squares method; this method minimizes the sum-of-squared residual between an observed value and a fitted value that was determined by a model. In the above equation, the physical distance (Kb) between two loci is denoted by  $x$  and the recombination intensity in the *HLA* region was set at 0.65 cM/Mb [27,41].

The phased haplotypes consisting of two or more *HLA* loci were estimated using the PHASE program version 2.1 [25,26]. The estimated 6-locus haplotypes were further used for the calculation of extended haplotype homozygosity (*EHH*) [17] and of haplotype homozygosity (*HH*). In this study, *HH* of each *HLA* allele was defined as the probability that any two randomly chosen samples of haplotype bearing the *HLA* allele have the same 6-locus *HLA* haplotype.

A sliding window analysis of individual heterozygosity, which was defined as the proportion of heterozygous SNPs to SNPs genotyped in a single subject, was conducted to examine whether the *A\*33:03-C\*14:03-B\*44:03-DRB1\*13:02-DQB1\*06:04-DPB1\*04:01* haplotype had a single origin in Japan. 19,949 SNPs located on 6p were genotyped, and the average SNP density was 0.34 SNP/kb. The window and step sizes were 1 Mb and 200 kb, respectively. This analysis was performed using the SNP data from the five subject included in the SNP typing: three subjects were homozygous for the *A\*33:03-C\*14:03-B\*44:03-DRB1\*13:02-DQB1\*06:04-DPB1\*04:01* haplotype and two subjects had the heterozygous genotypes of the *A\*33:03-C\*14:03-B\*44:03-DRB1\*13:02-DQB1\*06:04-DPB1\*04:01* haplotype and the *A\*24:02-C\*07:02-B\*07:02-DRB1\*01:01-DQB1\*05:01-DPB1\*04:02* haplotype and of the *A\*33:03-C\*14:03-B\*44:03-DRB1\*13:02-DQB1\*06:04-DPB1\*04:01* haplotype and the *A\*24:02-C\*12:02-B\*52:01-DRB1\*15:02-DQB1\*06:01-DPB1\*09:01* haplotype.

## Computer Simulation

To estimate the intensity of recent positive selection acting on *DPB1\*04:01*, a stochastic population genetic model (two-locus two-allele model) assuming both positive selection and random

genetic drift was built and assessed. The diploid population size,  $N$ , was set to be 10,000 (i.e., 20,000 chromosomes). Four haplotypes carrying *DPB1\*04:01* or non-*DPB1\*04:01* alleles (designated by *DPB1\*X*) at the *HLA-DPB1* locus and *DQB1\*06:04* or non-*DQB1\*06:04* alleles (designated by *DQB1\*X*) at the *HLA-DQB1* locus were used in this model. The frequencies of the *DQB1\*06:04-DPB1\*04:01*, *DQB1\*X-DPB1\*04:01*, *DQB1\*06:04-DPB1\*X*, and *DQB1\*X-DPB1\*X* haplotypes at generation  $t$  were denoted by  $f_1(t)$ ,  $f_2(t)$ ,  $f_3(t)$ , and  $f_4(t)$ , respectively. The current frequencies of the corresponding haplotypes in our study population were denoted by  $f_1$ ,  $f_2$ ,  $f_3$ , and  $f_4$ . A dominant selection was assumed for *DPB1\*04:01* (i.e., relative fitnesses of *DPB1\*04:01/DPB1\*04:01*, *DPB1\*04:01/DPB1\*X*, and *DPB1\*X/DPB1\*X* are 1, 1, and  $1 - s$ , respectively). The initial haplotype frequencies were set as  $f_1(t) = z$ ,  $f_2(t) = 0$ ,  $f_3(t) = (1 - z)f_3/(f_3 + f_4)$ , and  $f_4(t) = (1 - z)f_4/(f_3 + f_4)$ . The recombination between *HLA-DPB1* and *HLA-DQB1* loci was assumed to occur at a rate of  $c$ . Since the recombination rate between *HLA-DQB1* and *HLA-DPB1* has been estimated to be between 0.004 and 0.012 [41,42], a uniform recombination rate ( $c$ ) within this range was used as a prior distribution. To estimate suitable parameter sets of  $z$ ,  $s$ , and  $c$ , each value was drawn by a random number generator in every simulation run. The random numbers were between 0.0001 (i.e.,  $2/2N$ ) and 0.005 (i.e.,  $100/2N$ ) for  $z$ , between 0 and 0.1 for  $s$ , and between 0.004 and 0.012 for  $c$ .

Next, to evaluate the similarity between simulated and observed frequencies,

$$e = \sum_{i=1}^4 \frac{(f_i(t) - f_i)^2}{f_i(t) + f_i}$$

was calculated. As the simulated haplotype frequencies,  $f_1(t)$ ,  $f_2(t)$ ,  $f_3(t)$ , and  $f_4(t)$ , approaches values close to the observed frequencies,  $f_1$ ,  $f_2$ ,  $f_3$ , and  $f_4$ , the value of  $e$  approaches 0. The rejection method [18,32,33] was used to accept only simulation runs that resulted in (i)  $e$  of less than 0.01, (ii)  $f_1(t)$  of not less than  $f_1 - 0.01$  nor more than  $f_1 + 0.01$ , and (iii)  $t$  of not less than 92 nor more than 115 generations. A total of 2,500 runs were accepted. The mean and

95% credible interval of  $s$  were obtained from the 2,500 accepted runs.

## Supporting Information

### Data S1 Pairwise LD measures for individual HLA allele pairs.

(XLSX)

### Table S1 Linkage Disequilibrium between pairs of HLA loci.

(XLSX)

### Table S2 Estimated frequencies of 2-locus HLA haplotypes.

(XLSX)

### Table S3 Estimated frequencies of 3-locus HLA haplotypes.

(XLSX)

### Table S4 Estimated frequencies of 4-locus HLA haplotypes.

(XLSX)

### Table S5 Estimated frequencies of 5-locus HLA haplotypes.

(XLSX)

## Acknowledgments

We deeply thank all the subjects for their participation in the study. We also thank Ms Yoriko Mawatari, Ms Megumi Sageshima, Ms Yuko Ogasawara, Ms Natsumi Baba, and Ms Rieko Hayashi (University of Tokyo) for technical assistance.

## Author Contributions

Conceived and designed the experiments: MK JO. Performed the experiments: MK NN. Analyzed the data: MK JO. Contributed reagents/materials/analysis tools: JO NN KT. Wrote the paper: MK JO. Assembled the data: MK NN. Performed the computer simulation: JO.

## References

- Bjorkman PJ, Saper MA, Samraoui B, Bennett WS, Strominger JL, et al. (1987) The foreign antigen binding site and T cell recognition regions of class I histocompatibility antigens. *Nature* 329: 512–518.
- Campbell RD, Trowsdale J (1993) Map of the human MHC. *Immunology today* 14: 349–352.
- Takahata N, Nei M (1990) Allelic genealogy under overdominant and frequency-dependent selection and polymorphism of major histocompatibility complex loci. *Genetics* 124: 967–978.
- Takahata N (1990) A simple genealogical structure of strongly balanced allelic lines and trans-species evolution of polymorphism. *Proc Natl Acad Sci U S A* 87: 2419–2423.
- Hughes AL, Nei M (1988) Pattern of nucleotide substitution at major histocompatibility complex class I loci reveals overdominant selection. *Nature* 335: 167–170.
- Hughes AL, Nei M (1989) Nucleotide substitution at major histocompatibility complex class II loci: evidence for overdominant selection. *Proc Natl Acad Sci U S A* 86: 958–962.
- Klein J (1987) Origin of major histocompatibility complex polymorphism: the trans-species hypothesis. *Hum Immunol* 19: 155–162.
- Hedrick PW, Thomson G (1983) Evidence for balancing selection at HLA. *Genetics* 104: 449–456.
- Solberg OD, Mack SJ, Lancaster AK, Single RM, Tsai Y, et al. (2008) Balancing selection and heterogeneity across the classical human leukocyte antigen loci: a meta-analytic review of 497 population studies. *Hum Immunol* 69: 443–464.
- Aly TA, Eller E, Ide A, Gowan K, Babu SR, et al. (2006) Multi-SNP analysis of MHC region: remarkable conservation of HLA-A1-B8-DR3 haplotype. *Diabetes* 55: 1265–1269.
- Horton R, Gibson R, Coggill P, Miretti M, Allcock RJ, et al. (2008) Variation analysis and gene annotation of eight MHC haplotypes: the MHC Haplotype Project. *Immunogenetics* 60: 1–18.
- Alper CA, Larsen CE, Dubey DP, Awdeh ZL, Fici DA, et al. (2006) The haplotype structure of the human major histocompatibility complex. *Hum Immunol* 67: 73–84.
- Yunis EJ, Larsen CE, Fernandez-Vina M, Awdeh ZL, Romero T, et al. (2003) Inheritable variable sizes of DNA stretches in the human MHC: conserved extended haplotypes and their fragments or blocks. *Tissue Antigens* 62: 1–20.
- Traherne JA, Horton R, Roberts AN, Miretti MM, Hurles ME, et al. (2006) Genetic analysis of completely sequenced disease-associated MHC haplotypes identifies shuffling of segments in recent human history. *PLoS Genet* 2: e9.
- de Bakker PI, McVean G, Sabeti PC, Miretti MM, Green T, et al. (2006) A high-resolution HLA and SNP haplotype map for disease association studies in the extended human MHC. *Nature genetics* 38: 1166–1172.
- Awdeh ZL, Raum D, Yunis EJ, Alper CA (1983) Extended HLA/complement allele haplotypes: evidence for T/t-like complex in man. *Proc Natl Acad Sci U S A* 80: 259–263.
- Sabeti PC, Reich DE, Higgins JM, Levine HZ, Richter DJ, et al. (2002) Detecting recent positive selection in the human genome from haplotype structure. *Nature* 419: 832–837.
- Ohashi J, Naka I, Patarapotikul J, Hananantachai H, Brittenham G, et al. (2004) Extended linkage disequilibrium surrounding the hemoglobin E variant due to malarial selection. *Am J Hum Genet* 74: 1198–1208.
- Ewens WJ (1972) The sampling theory of selectively neutral alleles. *Theor Popul Biol* 3: 87–112.
- Excoffier L, Slatkin M (1995) Maximum-likelihood estimation of molecular haplotype frequencies in a diploid population. *Mol Biol Evol* 12: 921–927.
- Lewontin RC (1964) The Interaction of Selection and Linkage. I. General Considerations; Heterotic Models. *Genetics* 49: 49–67.
- Mitsunaga S, Kuwata S, Tokunaga K, Uchikawa C, Takahashi K, et al. (1992) Family study on HLA-DPB1 polymorphism: linkage analysis with HLA-DR/DQ and two “new” alleles. *Human immunology* 34: 203–211.

23. Cullen M, Erlich H, Klitz W, Carrington M (1995) Molecular mapping of a recombination hotspot located in the second intron of the human TAP2 locus. *American journal of human genetics* 56: 1350–1358.
24. Djilali-Saiah I, Benini V, Daniel S, Assan R, Bach JF, et al. (1996) Linkage disequilibrium between HLA class II (DR, DQ, DP) and antigen processing (LMP, TAP, DM) genes of the major histocompatibility complex. *Tissue antigens* 48: 87–92.
25. Stephens M, Scheet P (2005) Accounting for decay of linkage disequilibrium in haplotype inference and missing-data imputation. *Am J Hum Genet* 76: 449–462.
26. Stephens M, Smith NJ, Donnelly P (2001) A new statistical method for haplotype reconstruction from population data. *Am J Hum Genet* 68: 978–989.
27. Miretti MM, Walsh EC, Ke X, Delgado M, Griffiths M, et al. (2005) A high-resolution linkage-disequilibrium map of the human major histocompatibility complex and first generation of tag single-nucleotide polymorphisms. *Am J Hum Genet* 76: 634–646.
28. Gonzalez-Galarza FF, Christmas S, Middleton D, Jones AR (2011) Allele frequency net: a database and online repository for immune gene frequencies in worldwide populations. *Nucleic Acids Res* 39: D913–919.
29. Abdulla MA, Ahmed I, Assawamakin A, Bhak J, Brahmachari SK, et al. (2009) Mapping human genetic diversity in Asia. *Science* 326: 1541–1545.
30. Gjesing AP, Andersen G, Burgdorf KS, Borch-Johnsen K, Jorgensen T, et al. (2007) Studies of the associations between functional beta2-adrenergic receptor variants and obesity, hypertension and type 2 diabetes in 7,808 white subjects. *Diabetologia* 50: 563–568.
31. Song EY, Park MH, Kang SJ, Park HJ, Kim BC, et al. (2002) HLA class II allele and haplotype frequencies in Koreans based on 107 families. *Tissue Antigens* 59: 475–486.
32. Ohashi J, Naka I, Tsuchiya N (2011) The impact of natural selection on an ABCC11 SNP determining earwax type. *Mol Biol Evol* 28: 849–857.
33. Tishkoff SA, Varkonyi R, Cahinhinan N, Abbes S, Argyropoulos G, et al. (2001) Haplotype diversity and linkage disequilibrium at human G6PD: recent origin of alleles that confer malarial resistance. *Science* 293: 455–462.
34. Blackwell JM, Jamieson SE, Burgner D (2009) HLA and infectious diseases. *Clin Microbiol Rev* 22: 370–385, Table of Contents.
35. Kamatani Y, Wattanapokayakit S, Ochi H, Kawaguchi T, Takahashi A, et al. (2009) A genome-wide association study identifies variants in the HLA-DP locus associated with chronic hepatitis B in Asians. *Nat Genet* 41: 591–595.
36. Voight BF, Kudravalli S, Wen X, Pritchard JK (2006) A map of recent positive selection in the human genome. *PLoS Biol* 4: e72.
37. Dunbar SA (2006) Applications of Luminex xMAP technology for rapid, high-throughput multiplexed nucleic acid detection. *Clin Chim Acta* 363: 71–82.
38. Rousset F (2008) genepop'007: a complete re-implementation of the genepop software for Windows and Linux. *Mol Ecol Resour* 8: 103–106.
39. Excoffier L, Laval G, Schneider S (2005) Arlequin (version 3.0): an integrated software package for population genetics data analysis. *Evol Bioinform Online* 1: 47–50.
40. Watterson GA (1978) The homozygosity test of neutrality. *Genetics* 88: 405–417.
41. Martin M, Mann D, Carrington M (1995) Recombination rates across the HLA complex: use of microsatellites as a rapid screen for recombinant chromosomes. *Hum Mol Genet* 4: 423–428.
42. Begovich AB, McClure GR, Suraj VC, Helmuth RC, Fildes N, et al. (1992) Polymorphism, recombination, and linkage disequilibrium within the HLA class II region. *J Immunol* 148: 249–258.



Minerva Access is the Institutional Repository of The University of Melbourne

**Author/s:**

Kawashima, M; Ohashi, J; Nishida, N; Tokunaga, K

**Title:**

Evolutionary analysis of classical HLA class I and II genes suggests that recent positive selection acted on DPB1\*04:01 in Japanese population.

**Date:**

2012

**Citation:**

Kawashima, M., Ohashi, J., Nishida, N. & Tokunaga, K. (2012). Evolutionary analysis of classical HLA class I and II genes suggests that recent positive selection acted on DPB1\*04:01 in Japanese population.. PLoS One, 7 (10), pp.e46806-.  
<https://doi.org/10.1371/journal.pone.0046806>.

**Persistent Link:**

<http://hdl.handle.net/11343/277202>

**File Description:**

Published version

**License:**

CC BY