

Provided for non-commercial research and education use.
Not for reproduction, distribution or commercial use.



This article appeared in a journal published by Elsevier. The attached copy is furnished to the author for internal non-commercial research and education use, including for instruction at the authors institution and sharing with colleagues.

Other uses, including reproduction and distribution, or selling or licensing copies, or posting to personal, institutional or third party websites are prohibited.

In most cases authors are permitted to post their version of the article (e.g. in Word or Tex form) to their personal website or institutional repository. Authors requiring further information regarding Elsevier's archiving and manuscript policies are encouraged to visit:

<http://www.elsevier.com/authorsrights>



Contents lists available at SciVerse ScienceDirect

Journal of Environmental Management

journal homepage: www.elsevier.com/locate/jenvman

System dynamic modelling to assess economic viability and risk trade-offs for ecological restoration in South Africa

D.J. Crookes^{a,*}, J.N. Blignaut^b, M.P. de Wit^c, K.J. Esler^d, D.C. Le Maitre^e, S.J. Milton^f, S.A. Mitchell^g, J. Cloete^h, P. de Abreuⁱ, H. Fourie (nee Vlok)^j, K. Gull^k, D. Marxⁱ, W. Mugido^l, T. Ndhlovu^d, M. Nowell^d, M. Pauw^d, A. Rebelo^d

^a Department of Economics, Stellenbosch University, Matieland, 7602, South Africa

^b Department of Economics, University of Pretoria, Pretoria, 0002, South Africa

^c School of Public Leadership, Stellenbosch University, Matieland, 7602, South Africa

^d Department of Conservation Ecology and Entomology and Centre for Invasion Biology, Stellenbosch University, Matieland, 7602, South Africa

^e Council for Industrial and Scientific Research, P.O. Box 320, Stellenbosch, 7599, South Africa

^f Sustainability Research Unit, Nelson Mandela Metropolitan University, George, 6530, South Africa, South Africa

^g Centre for Environmental Management, University of the Free State, P.O. Box 339, Bloemfontein, 9300, South Africa

^h Department of Animal, Wildlife and Grassland Sciences, University of the Free State, P.O. Box 339, Bloemfontein, 9300, South Africa

ⁱ Percy FitzPatrick Institute, University of Cape Town, Rondebosch 7701, South Africa

^j Western Cape Department of Agriculture, Private Bag X1, Elsenburg, 7607, South Africa

^k Department of Economics, University of Cape Town, Rondebosch 7701, South Africa

^l Department of Agricultural Economics, Stellenbosch University, Matieland, 7602, South Africa

ARTICLE INFO

Article history:

Received 24 December 2012

Received in revised form

25 January 2013

Accepted 1 February 2013

Available online

Keywords:

Restoration

System dynamics

Portfolio mapping

Risk analysis

Water

Agriculture

ABSTRACT

Can markets assist by providing support for ecological restoration, and if so, under what conditions? The first step in addressing this question is to develop a consistent methodology for economic evaluation of ecological restoration projects. A risk analysis process was followed in which a system dynamics model was constructed for eight diverse case study sites where ecological restoration is currently being pursued. Restoration costs vary across each of these sites, as do the benefits associated with restored ecosystem functioning. The system dynamics model simulates the ecological, hydrological and economic benefits of ecological restoration and informs a portfolio mapping exercise where payoffs are matched against the likelihood of success of a project, as well as a number of other factors (such as project costs and risk measures). This is the first known application that couples ecological restoration with system dynamics and portfolio mapping. The results suggest an approach that is able to move beyond traditional indicators of project success, since the effect of discounting is virtually eliminated. We conclude that systems dynamic modelling with portfolio mapping can guide decisions on when markets for restoration activities may be feasible.

© 2013 Elsevier Ltd. All rights reserved.

1. Introduction

1.1. Overview

Legal requirements for restoring natural ecosystems have become the norm for many human activities that alter or transform natural environments, such as mining (Holl, 2002; Moreno-de las Heras et al., 2008; Tischew et al., 2010). The pressure for such

* Corresponding author. Contact details: Private bag X1, Matieland, 7602, South Africa. Tel.: +27 73 1975 222; fax: +27 21 8554453.

E-mail address: d_crookes@hotmail.com (D.J. Crookes).

legislation arose because the on and off-site impacts of damaged sites, such as dust and polluted runoff, adversely affected human welfare and compelled society to enact laws and regulations (Milton et al., 2003). These impacts were generally clear cut and evident but there is growing awareness that many other human activities have adverse impacts, directly or indirectly, on natural environments and that these affect the benefits, often termed ecosystem services, that society derives from such environments (Aronson et al., 2007). Although these impacts often are subtle and insidious the consequences can be significant and additive, particularly those that alter ecosystem functions such as water flow regulation and soil stabilisation (Braumann et al., 2007). The cumulative effects of declines in the ecosystem services delivered to

society (e.g. good quality water, productive soils) can be substantial, sufficient to justify the expense of restoring them. Returns on investments in restoration have been found to be so high that several payments for ecosystem goods and services (PES) schemes have been established around the world (e.g. South Africa: Turpie et al., 2008a; Nepal: Navraj et al., 2010; Ecuador: De Koning et al., 2011; Europe: Van der Horst, 2011). Although land degradation is widespread across South Africa, and severe in many cases (Hoffman et al., 2000; Crookes, 2003), a number have been proposed (Upper Tugela: Blignaut et al., 2008, 2010; Baviaanskloof: Mander et al., 2010) although there are few PES schemes in operation.

Restoration is generally a costly undertaking, partly because it is often only begun after the environmental degradation is well-advanced and expensive to reverse, but also because it is often labour and resource intensive (Milton et al., 2003; Aronson et al., 2006; Turpie et al., 2008a). Furthermore, restoration often requires large investments upfront and has long lags before generating benefits. Construction of gabions, soil pollution amelioration and physical establishment of vegetation are expensive interventions. Restoration can also be risky, for example there may be little understanding of the ecological requirements for vegetation establishment or the probability of a dry year, resulting in high plant mortality and failure to achieve targets. These factors, among others, make most governments, organisations and individuals who are interested in applying restoration very reluctant to commit resources to restoration unless they are compelled to, despite these investments having potentially significant leverage effects (De Wit et al., 2012).

Given these constraints, the question we ask is, what role do markets, if any, play in ecological restoration projects? It should be noted here that the term “markets” is used in the following way:

- i) Hypothetically: since this is an *ex post* analysis of actual restoration projects considering the possibility whether they could have considered market mechanisms, i.e. that there is sufficient demand for the services the projects offered;
- ii) Broadly: not in a technocratic sense favouring a specific market model, such as cap-and-trade or tradable permits; and
- iii) Non-prescriptively: not defining the institutional parameters or legal conditions for the trade to take place.

This also implies that the specific ecosystem services considered are dominated by those that do have either actual or potential market values for which there are direct benefits to people, such as water and grazing. Ecosystem services that do not have easily quantifiable market values are therefore excluded, leading to under-estimation of the benefits of restoration.

Here we use the Regional Economic System dynamics model for the Restoration of Ecosystems and project Prioritisation (The RESTORE-P model, see Crookes, 2012) to test the following hypothesis:

The restoration of natural capital improves water flow and water quality, land productivity, in some instances sequesters more carbon, and, in general, improves both the socio-economic value of the land in and the surroundings of the restoration site as well as the agricultural potential of the land.

The RESTORE-P model uses a market-based approach to classify and prioritise restoration projects that are subject to budgetary constraints. The standard economic approach for determining if an ecological restoration project should proceed is the cost–benefit framework involving the estimation of Net Present Values (NPVs) through the use of discounting (e.g. Schiappacasse et al., 2012). Although static cost benefit analysis combined with linear

discounting techniques has been useful, it is insufficient in environmental management contexts characterised by complexity, risk and uncertainty. In this article a dynamic approach based on the risk analysis (RA) framework proposed by David Hertz (Hertz and Thomas, 1983; Aven, 2003) is employed. The risk analysis approach uses Monte Carlo simulation to assign a probability distribution to an output variable which in turn is used to inform a portfolio mapping (PM) exercise (Matheson et al., 1989; Matheson and Menke, 1994; Cooper, 2005; Wysocki, 2009). The portfolio map is a bubble chart where the potential payoff from a project is plotted against the probability of its technical success (see Section 2.5 for a further elaboration). The maps are then used to select and prioritise restoration projects. The approach adopted here is novel in that a system dynamics (SD) model of the problem is first developed, and then used as part of the risk analysis process. Net present values are still calculated, but using a system dynamics model to capture the underlying dynamics of the system enables a better representation of the system than a static cost benefit analysis. This is because nonlinearities and feedbacks are included as well as improved opportunities to interrogate the data, for example through optimisation techniques and sensitivity analysis using advanced tools such as Monte Carlo simulation. Additionally, the same discount rate is applied across all sites, effectively nullifying its impact on the relative ranking among the sites.

Applying system dynamics to risk analysis in an environmental management context is not unique (e.g. Dawadi and Ahmad, 2013), and risk analysis has been employed in ecological restoration projects in the past (see e.g. Yoe et al., 2009), however this is the first known application of risk analysis, system dynamics and portfolio mapping to an environmental restoration problem. We found no articles in Google Scholar or Science Direct that applied portfolio mapping to environmental management or environmental restoration. One of the main reasons for this is that organisations seldom possess the relevant ecological data (Vandaele and Decouttere, 2012). In this study the data problem was addressed by a unique data collection process that involved twelve postgraduate students in the fields of ecology, hydrology and economics gathering primary data from a range of sites where restoration is occurring, with a number of experts providing external validation of the data and the model as well as additional insights. We begin by introducing the system dynamic modelling approach we have adopted for economic assessment and explain the benefits of this innovative approach to project assessment.

1.2. System dynamics and restoration

Ecological restoration is acknowledged as a complex and dynamic problem and no single simple answer or single discipline is capable of addressing the problem in isolation (Aronson et al., 2007a). Synthetic approaches are needed to integrate the dynamic and complex ecological and socio-economic aspects linked to ecological restoration and system dynamics modelling provides an appropriate tool for capturing and modelling the key components of such systems.

System dynamics models are used for a wide range of economic and environmental applications. Although system dynamics modelling has been used to model restoration activities, its application has largely been limited to wetland or watershed problems (e.g. Bendor, 2009; Liu et al., 2008; Arquitt and Johnstone, 2008). Potential applications of system dynamics modelling to water, agricultural and other environmental problems are, however, widespread and gaining prominence. For example, Higgins et al. (1997) modelled the restoration of mountain fynbos ecosystems in the Western Cape, Jogo and Hassan (2010) modelled wetland management in the Limpopo river basin, Fleming et al. (2007) modelled cholera health risk and Turpie et al. (2008b) modelled

estuaries. Other published applications include Wise and Cacho (2005) modelling the Indonesian agroforestry sector and Nobre et al. (2009) modelling Chinese aquaculture. This approach is useful in order to capture biophysical variability and also to move beyond a single (static) measure of assessing project viability based only on the present value of a stream of costs and benefits, and thus overly influenced by the discount rate.

2. Material and methods

2.1. Study location and data

RESTORE-P is a localised system dynamics model that was used to investigate the impacts of restoring natural capital across eight case study sites throughout South Africa (Fig. 1) using the Vensim modelling software.

Sites were selected based on a range of criteria, including site safety, social and economic development potential, accessibility and market potential (see supplementary material for full list of criteria). The sites span a range of vegetation biomes, from arid Nama Karoo and Succulent Karoo, to more mesic Fynbos, Savanna, Grassland and Forest (supplementary material, Table 1). The majority of the sites are in arid or semi-arid climatic zones, with mean annual precipitation of less than 700 mm per year. Most of the restoration takes place on private land, although some have mixed ownership while others are public or communal areas. The extent of degradation also varies quite significantly across the sites, and although this is difficult to compare with any degree of objectivity, many sites are significantly altered. Most notable are those transformed by mining activity (strip mining) and those severely degraded by intensive ostrich farming and overgrazing.

Primary data were derived from a range of studies conducted at the individual case study sites by a number of the co-authors (see supplementary material). Most parameter values were obtained from these published dissertations and other published sources, from unpublished data that accompanied this research, or through personal communications obtained from a range of experts. In a few cases where literature estimates were not available, the system dynamics model was used to optimise decision variables in such a way that Net Present Values (NPVs) for a particular case study were

maximised. For example, the model indicated that optimal restoration period was an initial high level of activity followed by a maintenance period, or a long-term period of restoration activity at relatively lower intensity. The optimisation results suggested that most of the financial expenditure on restoration was incurred early on in the project lifespan, which was also consistent with *a priori* expectations.

2.2. Conceptual model

The RESTORE-P model evaluates the effects of restoration on all four forms of natural capital (Fig. 2a) as described in Aronson et al. (2007b). It is beyond the scope of this article to provide full particulars of all eight case studies, but the interested reader is referred to the supplementary material for more detail. This article provides information of one case study, namely Beaufort West, to highlight the approach adopted. The Beaufort West case study was chosen as this was the simplest conceptually. The system dynamics stock flow diagram for the land-use component of this case study is given in Fig. 2b, and links to other sub-models through the use of 'shadow variables', which allow different sub-models to be created in different views using the Vensim software. In the next section, more detailed information is provided on the process followed to develop the RESTORE-P model.

2.3. Risk analysis process

The risk analysis process was conducted in three stages. In the first stage, a system dynamics model was developed and used to maximise the net present value of each of the eight case studies. This required optimising the input variables in the model, for example the intensity of restoration and time period over which restoration was conducted. This is an established approach in the system dynamics literature (Keloharju and Wolstenholme, 1989). The model was developed in Vensim DSS 5.9e (Ventana Systems, 2007). This platform provides an interactive modelling environment for answering policy related questions.

The Vensim modelling platform enables the identification of key structural features in the model, as well as conducting the Monte Carlo simulations used for sensitivity analysis (model validation)

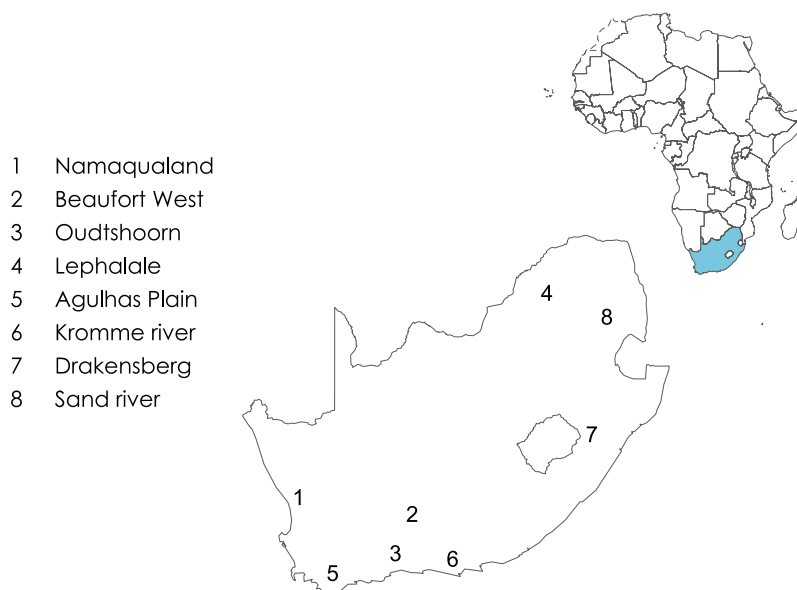


Fig. 1. Geographical distribution of case studies.

Table 1
Parameters used in model and units.

Description	Symbol	Formula/Value	Unit	Reference
lifespan of plant	L_p	50	Dmnl	Crookes, 2012
Conversion from Kw to Rand	C_{KR}	15,000	Rand/Kw	Fourie, 2011
Time to clear area	T_c	1	Year	Crookes, 2012
Area regrowth following rain	P_R	1	Dmnl	Crookes, 2012
Regrowth rate	R_R	1	Year	Crookes, 2012
Discount rate	I_R	0.08	1/Year	Mullins et al., 2007
<i>Prosopis</i> water use	P_w	251.9	m ³ /hectare	Fourie, 2011
Initial area of <i>prosopis</i>	A	781	Hectare	Vlok, 2010
No of years of clearing activity	C_t	50	Year	Crookes, 2012
Conversion to condensed <i>prosopis</i> area	P_c	0.19	Dmnl	Vlok, 2010
Change in grazing capacity	Δ_{gc}	0.028	LSU/hectare	Ndhlovu, 2011
Clearing cost	C_c	817.5	Rand/hectare	Vlok, 2010
Conversion of wood biomass to Kw	C_{BK}	900	Kw/ton*hour	Fourie, 2011
Price less opex	GM_b	0.345	Rand/Kw/hour	Fourie, 2011
Profit margin	PM_g	0.2	Dmnl	Fourie, 2011
Biomass produced per hectare	B_p	15.7	ton/hectare	Fourie, 2011
Total hours in a year	T_{hrs}	8760	Hour	Calculation (24*365)
Value per LSU =	V_g	4098.73	Rand/LSU	Fourie, 2011

Key: Dmnl = dimensionless (no units); Kw = kilowatt; LSU = livestock standard unit; R1 = 7.5 USD.

and risk analysis. The system dynamics model was validated using a series of iterative expert meetings, where consensus was reached on whether or not the structure of the model was adequately described, what parameters needed to be included or excluded, and if the behaviour of the model reflected the real world system it was attempting to mimic. A total of seven expert workshops were held over a three year period from May 2009 until March 2012. Apart from the twelve students working on the project, an additional 25 experts from the disciplines of ecology, hydrology, economics and agricultural economics provided inputs in various capacities. These included representatives not only from academia, but also from conservation organisations, government, parastatals and the private sector. A number of internal checks were also run on the model, for example tests to check if the units (dimensions) were consistent, if the model was sensitive to the method used to solve the model (integration error tests) and if all the elements in the model were included (so called 'mass balance' checks). The final model performed satisfactorily in response to those tests.

2.4. Monte Carlo simulations

In the second stage, Monte Carlo simulations were conducted on the model in order to determine the risk profile of the output variables. A number of different distributions are possible for the payoff variable, including the Normal, Poisson, Uniform and Triangular distributions. Usually, the uniform distribution is used if no additional information apart from the ranges in key variables is known (Van Groenendaal and Kleijnen, 2002). Since additional information of the underlying distribution was not available, input parameters were described using the uniform distribution, with the degree of variation reflecting the uncertainty of the parameter. Future refinements of the model should focus on obtaining a better understanding of underlying distribution functions characterising the model. Parameter values for all simulations were standardised

to ensure comparability across study sites. Since input prices could potentially range across any positive value up to and including the baseline, minimum values for the price function assumed –100% of the baseline value (i.e. zero), with maximum values equal to the baseline. Monte Carlo simulations were conducted for an ensemble of 200 realisations, for crop, water and grazing values. A full list of Monte Carlo simulation outputs is given in the [supplementary material](#). In most cases uncertainties in the output parameters are less than uncertainties in the input parameters, since the standard deviation is less than the mean (or the coefficient of variation is less than 1). From the output of the Monte Carlo simulations, it is also possible to compute the probability of success of a project, measured as the number of model runs (out of 200) that contain a positive NPV.

2.5. Portfolio mapping

In the third and final stage of the risk analysis process, the outputs from the system dynamics model and Monte Carlo simulations are plotted on a portfolio map (e.g. Cooper et al., 1997; Cooper, 2005). Portfolio maps are a common tool in the project portfolio management (PPM) literature (e.g. Wysocki, 2009), as a visual means of planning and prioritising future capital expenditure on projects. These portfolio maps are plotted on two axes, with the most common elements of the axes being firstly a measure of reward (e.g. NPV, IRR, benefit after years of launch or market value) and secondly a measure of risk (probability of technical or commercial success of the project) (Cooper et al., 2001). These two axes divide the portfolio map into four quadrants (Cooper et al., 1997; Cooper, 2005):

- Oysters: high risk projects with uncertain merits,
- Pearls: projects with high likelihood of success,
- Bread and butter: essential projects that enterprises cannot do without, and
- White elephants: projects which are preferable to avoid.

Portfolio maps communicate visually a range of additional information that would not have been available had project selection been based solely on traditional decision-making methods (such as NPV). Also known as 'bubble plots', these maps not only provide information on risk versus reward, but the size of the 'bubble' for each of the individual projects conveys additional information on the project such as project costs and risks measured through assessing the variability in output variables in response to uncertainty in, amongst others, input costs. These risks are measured through estimating the standard deviation or the coefficient of variation of the output variable.

3. Results

In this paper we are primarily interested in developing a consistent methodology for the economic evaluation of ecological restoration projects. Our proposed methodology is illustrated with actual case studies, but space prohibits a reporting of results on each of the study sites. Such results are already reported elsewhere (Blignaut et al., 2012; Crookes, 2012), but for ease of access also published as [supplementary material](#) to this paper. To demonstrate the methodology we provide here the results of one site, namely Beaufort West.

3.1. Beaufort West model

Water is a key constraint in the Beaufort West region, an arid area in the interior of South Africa that is prone to drought.

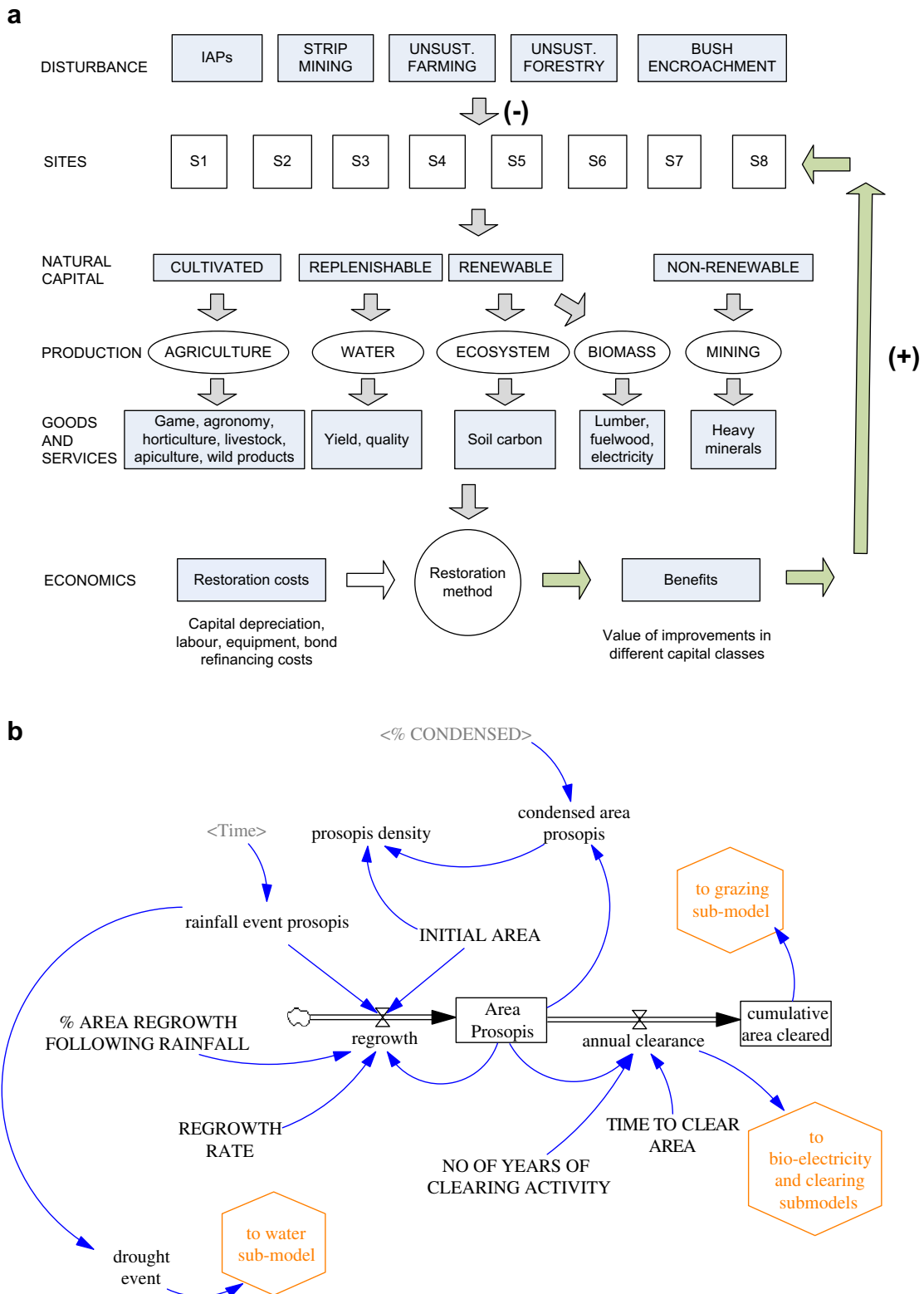


Fig. 2. a: Generic conceptual model. Feedbacks were excluded for clarity. At each of the study sites human activities have directly (e.g. mining) or indirectly (e.g. IAPs) altered the natural ecosystems, and thus the natural capital and the production and delivery of goods and services. Various ecological restoration methods have different ecological costs associated with them, and generated benefits in terms of improved ecosystem functioning. b: Stock flow diagram for Beaufort West showing the land use sub-model. Other sub-models (for brevity not shown here but included in the supplementary material) include grazing; clearing (alien removal); biomass electricity; water and an economic sub-model.

Prosopis (mesquite) is an invasive alien that adversely affects groundwater availability, displaces indigenous vegetation and affects rangeland vegetation structure and function (Ndhlovu, 2011; Ndhlovu et al., 2011). The benefits from clearing *Prosopis* are three-

fold (Vlok, 2010): Firstly, the removal of *prosopis* increases water yield to the municipality of Beaufort West because it uses more groundwater than the native vegetation. Secondly, the removal of *Prosopis* has a potentially beneficial effect on grazing values in the

area, as sheep production is an important regional/local agricultural activity. Grazing values are enhanced through the removal of *Prosopis* as it fixes nitrogen in the soil and its removal improves the regenerative capabilities of the natural shrubland, which also includes edible grassland species (Ndlovu, 2011). Finally, the clearing of *Prosopis* provides a potential supply of biomass that could fuel an electricity plant in the area thereby reducing the need for electricity generated from coal, an option which is currently under consideration.

Two additional issues were identified at the expert workshops that were held to facilitate the development of the model. The first issue was that of reflecting the scarcity value of water in this arid environment. A second one was including the impact of a high rainfall event on the germination of new *Prosopis* seedlings which would result in greater groundwater losses in future. Long-term (21 years) rainfall for the study area was obtained from Rose (2009). The mean rainfall over this period was 262 mm, and the standard deviation 71.3 mm ($n = 21$). These data were used to predict, from historical data, how frequently a high rainfall year occurred (i.e. when rainfall > mean + sd for a particular year), namely once every 4.4 years. The climate in Beaufort West is characterised by periodic high rainfall, with the majority of rainfall less than the mean. A drought year is therefore defined as all years that are not high rainfall. Water value in the model is determined by the municipal block water tariffs for Beaufort West (Vlok, 2010). The model was adjusted so that the scarcity value of water was reflected. For example, in a high rainfall year the block water price is R1.67/m³ but during a drought year water scarcity increases, so the price rises to R2.6/m³ (data from Fourie, 2011; USD1 = R7.5). All the other parameters used in the Beaufort West model were determined from the literature (Table 1). The endogenous variables used in the model are given in the supplementary material which also provides the full set of equations used in the Beaufort West model.

3.2. Monte Carlo simulations

The Monte Carlo simulation for the Beaufort West case study (Fig. 3) indicates that the project risk (measured by the width of the 'plume' in the diagram) is much greater for the water component (Fig. 3a) compared with the grazing component (Fig. 3b), but the potential payoff is also higher.

3.3. Portfolio mapping

Portfolio maps are plotted with Net Present Values (NPVs), measured in US dollars per hectare, on the x-axis, and probability of technical success of the project on the y-axis (Fig. 4). Each circle on the map represents a different ecological project and are distinguished on the basis of the types of benefits that are provided (water benefits, grazing benefits and crop benefits). The only difference between the three diagrams is the interpretation of the size of the circles (or bubbles).

3.3.1. Project cost

The standard and most commonly used portfolio map is the risk reward bubble plot (Fig. 4a), with the size of the bubble indicating resources committed to it. Projects across different sites (e.g. Kromme, Beaufort West, Agulhas) have different project costs, while projects within a site have the same project costs but different benefits. While some projects indicate a negative NPV, this is only because the project costs are compared with one ecosystem benefit at a time (e.g. water benefit), rather than the entire range of EGS that were assessed for the project as a whole. Also, discounting can be problematic when benefits are realised

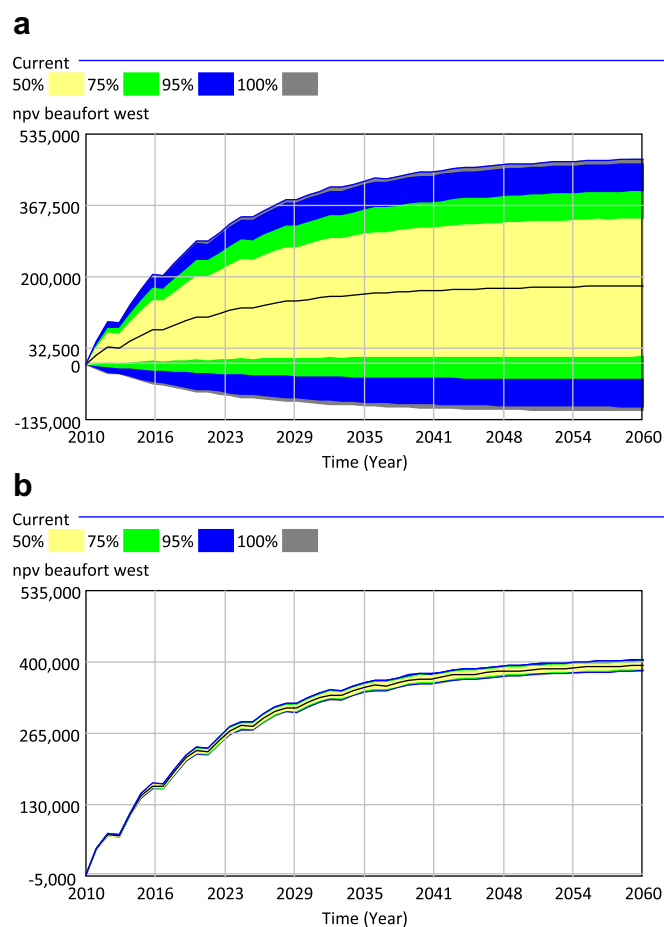


Fig. 3. Monte Carlo simulations for: (a) changes in water value and (b) changes in grazing value; at Beaufort West restoration site. These Monte Carlo simulations are used to calculate the risk parameters for the portfolio maps: The width of the 'plume' indicates the degree of riskiness of the restoration project. The probability of success of a project is the proportion of simulations that result in a positive NPV at time 2060. For the water project, the probability of success = 0.81 which means that 19 percent of the simulations produced an NPV of less than zero by $t = 2060$. Units in US dollars.

over a longer period compared with those projects where benefits are achieved in the short to medium term.

Results indicate that projects where there are significant gains in the values delivered by water are the 'pearl' projects, with high expectations of success and high payoffs. Those projects where grazing and crops are the primary benefits are mostly the bread and butter projects. There is one white elephant, the Namaqualand mining project, with large resources committed to it. It should however be noted that this excludes the value of the benefits from mining, which would affect the financial feasibility of restoration. Mining benefits are omitted from the analysis since mineral extraction is not a renewable resource and therefore not sustainable under a strong sustainability perspective. Furthermore, a negative NPV does not imply that restoration should not occur, merely that it fails the 'economics' test. There are other tests that are equally, if not more important, such as legislative requirements, social and ecological imperatives. Lephalale (grazing) is a potential oyster, with untested and therefore uncertain long-term benefits from restoration. Fairly low levels of resources are committed to this activity.

The portfolio map is useful in illustrating rewards and probability of success but it does not illustrate the risks inherent in each project outcome. The next portfolio map shows the impact of variations in the system inputs.

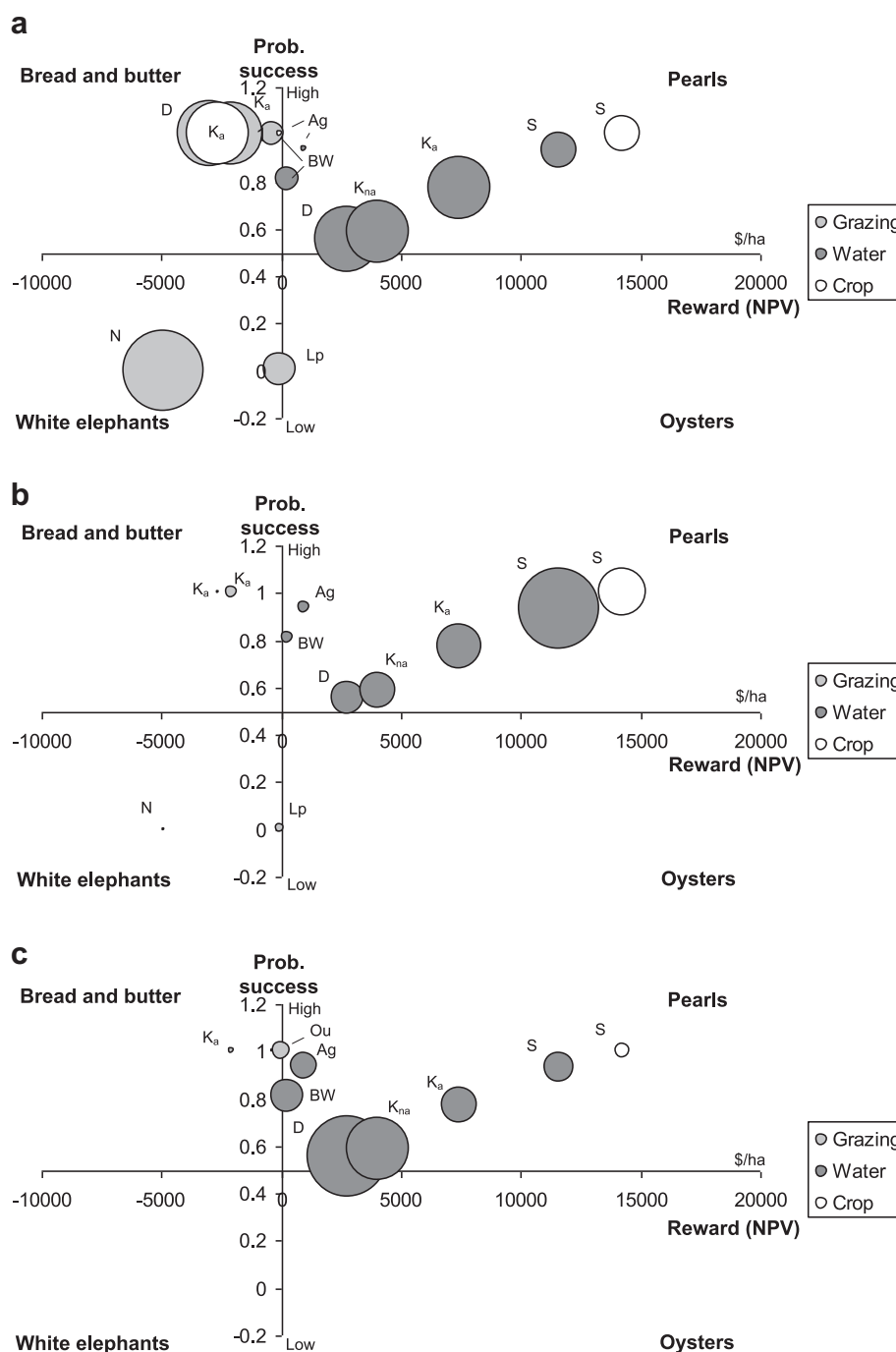


Fig. 4. Portfolio map for different ecosystem services showing the relative costs versus the probability of success (a) Bubble size indicates resources committed to restoration; (b) Bubble size indicates standard deviation of each project, and therefore the degree of volatility in the data; (c) Bubble size indicates coefficient of variation). Definitions for each of the quadrants (Oysters, Pearls, Bread and Butter, White elephants) given in section 2.5. Key to sites: Ag = Agulhas; BW = Beaufort West; D = Drakensberg; K_a = Kromme (with agriculture); K_{na} = Kromme (without agriculture); L_p = Lephalale; N = Namaqualand; Ou = Oudtshoorn; S = Sand.

3.3.2. Standard deviation

The second portfolio map is plotted against the same two axes, but the size of the bubbles now represents the standard deviation of each project (Fig. 4b). The standard deviation indicates the degree of volatility in the inputs and shows that, for the most part, the higher the potential reward the higher the risk. The projects with the most volatility are the water service dominated projects, as well as the irrigated agriculture scenario in the Sand project. Most projects with low NPV (the so called 'bread and butter' projects) exhibit very low project volatility.

3.3.3. Coefficient of variation

The final portfolio map gives the coefficient of variation (CV) as bubble size, which has the advantage over the standard deviation estimates in that it 'standardises' the values (the differences between the values of the means are removed and the proportional variation is now equalised). Negative means are harder to interpret so are omitted from the analysis (Fig. 4c). CVs are appropriate when the project means show a wide range of dispersion. The results are somewhat different from the standard deviation plots, and suggest that the Drakensberg water project, and the Kromme water project

(no agriculture scenario) are perhaps better classified as oysters rather than pearls, given the high degree of volatility.

3.3.4. Combined portfolio mapping results

The risk analysis process revealed that no individual measure of risk (success probability, standard deviation, CV) is sufficient for selecting and classifying projects. A combination of measures provides an improved means of selection. A summary of information from three risk profile maps (success probability, standard deviation and coefficient of variation), (Table 2), suggests that the projects with the highest potential payoffs (and therefore are pearl projects) are the water projects, in other words those projects where downstream water consumers benefit from the restoration project. Agulhas, Beaufort West, Kromme and Sand are all examples of this.

However, the results also indicate that water projects alone are not sufficient to mitigate the risks associated with the project. Those projects that include agriculture (in the mix) are subject to lower risk (Table 2). For example, Kromme without agriculture is classified as oyster (in other words, more risky) compared with Kromme (with agriculture), which is classified as a pearl. Furthermore, in the Sand study, in the case where Sabie Sand Game Reserve only benefits from the water is a higher risk project compared with restoration where irrigated agriculture also benefits. Another restoration study which is too reliant on water for benefits is the Drakensberg study, which is also classified as an oyster. Communal agricultural benefits and carbon values are not sufficient to increase resilience in the system. Lephalale on the other hand, is too reliant on grazing, and the introduction of a biomass electricity plant could potentially mitigate that risk and even push the project into an oyster or bread and butter project. The bread and butter projects are almost entirely crop or grazing projects, but these are only profitable if combined with either water or biomass projects. These project benefits are essential to ensure the success of restoration activities.

The results indicate that, for most of the restoration sites in this analysis, a market-based approach to restoration is appropriate. Total project Net Present Values are positive for all sites except the Namaqualand site. In the latter case, legislation is required to govern compliance rather than market instruments. The portfolio mapping framework enables restoration projects to be classified in terms of the degree of marketability based both on financial criteria (payoffs, costs), as well as environmental risks criteria and project success expectations. This approach has the advantage of communicating a wide range of information to decision-makers in contrast to static cost benefit analysis which only provides a dichotomous yes/no decision rule. Furthermore, utilising a range of different risk measures such as coefficient of variation and standard deviation enables further information about project volatility than would be achieved through a single measure. In the context of Payment for Ecosystem Services, decisions are now based on a range of decision criteria and not only reward. Linking these portfolio maps to an underlying system dynamics model enables the capturing of ecological and hydrological complexity through the

incorporation of feedbacks and non-linear dynamics. The system dynamics modelling approach also has the advantage that a relatively robust model may be developed in a data poor environment characterised by primary (mainly cross-sectional) source data, and validated through a panel of experts, rather than having to rely on validation through statistical analysis based on historical time series data. More often than not, ecological restoration projects are characterised by the former (cross-sectional or survey source data) rather than the latter (lengthy historical time series data) (e.g. Downs and Thorne, 2000).

4. Discussion

Here we work within the framework of eight existing restoration projects and therefore, *a priori*, accept the need for restoration. However, these projects lacked the context of an operating market for restoration and, prior to this investigation, had not considered the potential contribution payments for ecosystem goods and services rendered by restoration could offer. We therefore reflect and ask the question: Can markets assist by providing support for restoration and, if so, under which conditions? We focus on this question as natural resource management in South Africa has been, for the most part, regulation-based over the past century but recent evidence (see Turpie et al., 2008a; Blignaut et al., 2008, 2010) indicates that markets could be an efficient, complementary mechanism for achieving environmental objectives, even though some non-marketable ecosystem services were excluded from this study. Furthermore there are no legal and/or institutional impediments and/or barriers to the establishment of markets in South Africa. As a matter of fact market development is encouraged. This study included both the biophysical and socio-economic dimensions of the restoration because we wanted to assess both components and their potential role in decision making.

Our analysis of projects using portfolio mapping suggests that this approach, coupled with risk analysis and system dynamics modelling, is able to provide a means of selecting and prioritising restoration projects deemed to be more market ready than others. In using this method we use factors that determine project risk, often associated with biophysical attributes, and economic/financial values and indicators. This is since a singular focus on NPV could, and indeed does, lead to erroneous outcomes. A positive NPV should not be interpreted as a licence to exploit the natural environment (since restoration after exploitation would provide a positive return on investment). Neither should a negative NPV be interpreted as an indicator that restoration should not take place (as this is only considering the question with respect to the establishment of markets and does not deal with other rationales for or against restoration *per se*). A more nuanced assessment such as proposed here is required, especially when considering the development of PES.

We demonstrate that an integrated multi-disciplinary approach to the ecology, hydrology and economics of restoration is not only desirable, but also feasible. In doing so we used the conventional economic calculus of costs and benefits as a starting point for

Table 2
Summary of projects classified by type.

	Oyster	Pearl	Bread and butter	White elephant
Description	High risk projects with uncertain merits	Projects with high likelihood of success	Essential projects that enterprises cannot do without	Projects which are preferable to avoid
Water projects	Drakensberg; Kromme (no agriculture)	Agulhas, Beaufort West, Kromme (with agriculture), Sand		
Crop projects		Sand	Agulhas, Kromme (with agriculture)	
Grazing projects	Lephalale	Oudshoorn (passive only)	Beaufort West, Drakensberg, Kromme (with agriculture)	Namaqualand

evaluating restoration interventions, while building on and integrating the empirical work in the fields of ecology and hydrology. This is done in such a way as to internalise complexity and dynamic responses. Risk has therefore been endogenised and although we conducted sensitivity analysis, this was not added on at the end in an adjunct manner. We selected this approach since ecological systems have a number of individual components that interact in non-linear ways over a multiplicity of scales, while being heterogeneous across space (Wu and David, 2002). To effectively manage (restoration as one option) such systems we required at least an understanding of the properties and dynamics of such systems (see for example Maler, 2000).

Contrary to some suggestions (Rees et al., 2007; Bullock et al., 2011) there is no need to abandon conventional economic cost–benefit evaluation tools when considering restoration projects which typically have a high degree of risk and uncertainty, particularly when they are PES-based. These conventional tools, when enriched with an understanding of system properties and their dynamics, can be used to shape decision-making regarding restoration priorities. Such an approach, however, moves beyond standard static economic evaluation approaches as discussed, for example, by Figueroa (2007) and provides a novel way to move beyond the contested use of an exogenously determined discount rate as a single variable to linearly reflect the value of costs and benefits over time (see Mills et al., 2007; Holmes et al., 2007 for an application of cost–benefit analysis with exogenous discount rates in the context of restoration). By using an SD approach, it is also feasible to simulate repeated random sampling of uncertain inputs, and therefore to generate a measure of risks in restoration investment decisions. We demonstrate that the ensuing risk/reward outcomes provide a far more nuanced and thorough way of evaluating any project, including restoration projects, than the conventional net present value (NPV) outcomes favoured in most natural resource economic evaluation projects.

The benefit of an SD approach is that decision-making about using or deploying a PES from restored ecosystems are now driven by the known or expected changes in properties of that system. This is quite different and much more sophisticated than the application of exogenously determined discount rates. Discount rates are usually used in a static framework of costs and benefits over time, often to account for much more than what they were originally intended for, namely to act as a proxy for people's preference of holding money over time. Although we used a discount rate to reflect the value of money over time, it had no bearing on the relative ranking of projects in terms of whether markets can or cannot contribute to restoration. That ranking was decided on biophysical and socio-economic complexities inherent in each project. The market-development decision-making priority list is therefore discount rate neutral. This is a further significant departure from conventional methods.

5. Conclusion

We develop a decision-making framework with respect to the development of markets/payment systems for ecosystem goods and services following restoration which enables decisions to be taken against the backdrop of the risk involved in achieving such rewards or benefits. Neither SD approaches nor risk quantification by themselves are new, but applications to existing and on-going restoration projects are novel. This study hopes to contribute to the science and practice of restoration through such an evidence-based approach to integrating economic evaluation and ecosystems dynamics.

This study did not seek to provide a motivation for restoration, but only sought to identify under which conditions markets could

contribute to restoration, we do not suggest that only monetary values are of importance within the larger restoration decision-making picture. Those restoration options that have high risk/low reward outcomes over time should not necessarily be abandoned; we only suggest that markets are ill-equipped to assist in restoration under such conditions. This modelling exercise considers only the economic viability of ecological restoration projects, not priorities in terms of regional biodiversity persistence. We acknowledge that there may be a suite of other drivers for doing restoration, such as legislation on mining for example, where restoration needs to be conducted according to legal requirements and also socio-economic considerations like job creation, and national commitments to conservation of biodiversity. Final decisions on whether or not to proceed with restoration would need to take these factors into account.

Acknowledgements

This project was funded and commissioned by the Water Research Commission (WRC) – Key Strategic Area, Water Utilisation in Agriculture (KSA4). This work forms part of the WRC project entitled, 'The impact of re-establishing indigenous plants and restoring the natural landscape on sustainable rural employment and land productivity through payment for environmental services' undertaken by Africa's Search for Sound Economic Trajectories (ASSET Research). Funding from the WRC and ASSET Research is gratefully acknowledged.

Appendix A. Supplementary data

Supplementary data related to this article can be found at <http://dx.doi.org/10.1016/j.jenvman.2013.02.001>.

References

- Aronson, J., Clewell, A.F., Bignaut, J.N., Milton, S.J., 2006. Ecological restoration: a new frontier for nature conservation and economics. *J. Nat. Conserv.* 14, 135–139.
- Aronson, J., Milton, S.J., Bignaut, J.N. (Eds.), 2007a. *Restoring Natural Capital: Business, Science, and Practice*. Island Press, Washington D.C., pp. 3–8.
- Aronson, J., Milton, S.J., Bignaut, J.N., 2007b. Restoring natural capital: definitions and rationale. In: Aronson, J., Milton, S.J., Bignaut, J.N. (Eds.), *Restoring Natural Capital: Business, Science, and Practice*. Island Press, Washington D.C., pp. 3–8.
- Arquitt, S., Johnstone, R., 2008. Use of system dynamics modelling in design of an environmental restoration banking institution. *Ecol. Econ.* 65, 63–75.
- Aven, T., 2003. *Foundations of Risk Analysis: A Knowledge and Decision-oriented Perspective*. John Wiley & Sons, Chichester.
- Bendor, T., 2009. A dynamic analysis of the wetland mitigation process and its effects on no net loss policy. *Landscape Urban Plan.* 89, 17–27.
- Bignaut, J., Aronson, J., Mander, M., Marais, C., 2008. Investing in natural capital and economic development: South Africa's Drakensberg Mountains. *Ecol. Restor.* 26 (2), 143–150.
- Bignaut, J., Mander, M., Schulze, R., Horan, M., Dickens, C., Pringle, K., Mavundla, K., Mahlangu, I., Wilson, A., McKenzie, M., McKean, S., 2010. Restoring and managing natural capital towards fostering economic development: evidence from the Drakensberg, South Africa. *Ecol. Econ.* 69, 1313–1323.
- Bignaut, J., de Wit, M., Milton, S., Esler, K.J., Le Maitre, D., Mitchell, S., Crookes, D. (Eds.), 2012. *Determining the Economic Risk/return Parameters for Developing a Market for Ecosystem Goods and Services Following the Restoration of Natural Capital: A System Dynamics Approach*. Water Research Commission and ASSET Research, Pretoria.
- Brauman, K.A., Daily, G.C., Duarte, T.K., Mooney, H.A., 2007. The nature and value of ecosystem services: an overview highlighting hydrological services. *Annu. Rev. Environ. Resour.* 32, 6.1–6.32.
- Bullock, J.M., Aronson, J., Newton, A.C., Pywell, R.F., Rey-Benayas, J.M., 2011. Restoration of ecosystem services and biodiversity: conflicts and opportunities. *TREE* 26 (10), 541–549.
- Cooper, R.G., 2005. Portfolio management for product innovation. In: Levine, H.A. (Ed.), *Project Portfolio Management. A Practical Guide to Selecting Projects, Managing Portfolios, and Maximising Benefits*. John Wiley & Sons, San Francisco, pp. 318–355.
- Cooper, R.G., Edgett, S.J., Kleinschmidt, E.J., 1997. Portfolio management in new product development: lessons from the leaders—I. *Res. Technol. Manage.* 40 (5), 16–28.

- Cooper, R., Edgett, S., Kleinschmidt, E., 2001. Portfolio management for new product development: results of an industry practices study. *R&D Manage.* 31 (4), 361–380.
- Crookes, D.J., 2003. The contribution of livelihood activities in the Limpopo province: case study evidence from Makua and Manganeng. *Dev. South. Af.* 20 (1), 143–159.
- Crookes, D.J., 2012. Modelling the ecological-economic impacts of restoring natural capital, with a special focus on water and agriculture, at eight sites in South Africa. Ph.D dissertation, Stellenbosch University.
- Dawadi, S., Ahmad, S., 2013. Evaluating the impact of demand-side management on water resources under changing climatic conditions and increasing population. *J. Environ. Manag.* 114, 261–275.
- De Koning, F., Aguiñaga, M., Bravo, M., Chiu, M., Lascano, M., Lozada, T., Suarez, L., 2011. Bridging the gap between forest conservation and poverty alleviation: the Ecuadorian Socio Bosque program. *Environ. Sci. Pol.* 14, 531–542.
- De Wit, M., van Zyl, H., Crookes, D., Blignaut, J., Jayiya, T., Goiset, V., Mahumani, B., 2012. Including the economic value of well-functioning urban ecosystems in financial decisions: evidence from a process in Cape Town. *Ecosys. Serv.* 2, 38–44.
- Downs, P.W., Thorne, C.R., 2000. Rehabilitation of a lowland river: reconciling flood defence with habitat diversity and geomorphological sustainability. *J. Environ. Manag.* 58, 249–268.
- Figuroa, E.B., 2007. Restoring natural capital: a mainstream economic perspective. In: Aronson, J., Milton, S.J., Blignaut, J.N. (Eds.), *Restoring Natural Capital. Business, science, and practice.* Island Press, Washington D.C., pp. 28–35.
- Fleming, G., van der Merwe, M., McFerren, G., 2007. Fuzzy expert systems and GIS for cholera health risk prediction in southern Africa. *Environ. Model. Software* 22, 442–448.
- Fourie (nee Vlok), H., 2011. CBA Spreadsheets, Email to D. Crookes [Online], 7 February. Available email: d_crookes@hotmail.com.
- Hertz, D.B., Thomas, H., 1983. *Risk Analysis and Its Applications.* John Wiley & Sons, New York.
- Higgins, S.I., Turpie, J.K., Costanza, R., Cowling, R.M., Le Maitre, D.C., Marais, C., Midgley, G.F., 1997. An ecological economic simulation model of mountain fynbos ecosystems: dynamics, valuation and management. *Ecol. Econ.* 22, 155–169.
- Hoffman, T., Todd, S., Ntshona Z., Turner S. (Eds.), 2000. *A National Review of Land Degradation in South Africa, Unpublished Report.* South African National Biodiversity Institute, Pretoria. Online at: <http://www.nbi.ac.za/landdeg> (accessed: 14.11.12).
- Holl, K.D., 2002. Long-term vegetation recovery on reclaimed coal surface mines in the eastern USA. *J. Appl. Ecol.* 39, 960–970.
- Holmes, P.M., Richardson, D.M., Marais, C., 2007. Costs and benefits of restoring natural capital following alien plant invasions in Fynbos ecosystems in South Africa. In: Aronson, J., Milton, S.J., Blignaut, J.N. (Eds.), *Restoring Natural Capital: Business, Science, and Practice.* Island Press, Washington D.C, pp. 188–197.
- Jogo, W., Hassan, R., 2010. Balancing the use of wetlands for economic well-being and ecological security: the case of the Limpopo wetland in southern Africa. *Ecol. Econ.* 69, 1569–1579.
- Keloharju, R., Wolstenholme, E.F., 1989. A case study in system dynamics optimization. *J. Oper. Res. Soc.* 40 (3), 221–230.
- Liu, Y., Guo, H., Yu, Y., Dai, Y., Zhou, F., 2008. Ecological–economic modeling as a tool for watershed management: a case study of Lake Qionghai watershed, China. *Limnologica* 38, 89–104.
- Maler, K.-G., 2000. Development, ecological resources and their management: a study of complex, dynamic systems. *Eur. Econ. Rev.* 44 (4–6), 645–665.
- Mander, M., Blignaut, J., van Niekerk, M., Cowling, R., Horan, M., Knoesen, D., Mills, A., Powell, M., Schulze, R., 2010. *Baviaanskloof-tsitikamma Payment for Ecosystem Services: A Feasibility Assessment – Synthesis Report.* South Africa National Biodiversity Institute/Working for Water. Online at: <http://www.capeaction.org.za/index.php?C=bio&P=2001>.
- Matheson, J.E., Menke, M.M., 1994. Using decision quality principles to balance your R&D portfolio. *Res. Tech. Manag.* 37 (3), 38–43.
- Matheson, J.E., Menke, M.M., Derby, S.L., 1989. Improving the quality of R&D decision: a synopsis of the SDG approach. *J. Sci. Pol. Res. Manag. (in Japanese)* 4, 400–412.
- Mills, A.J., Turpie, J.K., Cowling, R.M., Marais, C., Kerley, G.I.H., Lechmere-Oertel, R.G., Sigwela, A.M., Powell, M., 2007. Assessing costs, benefits, and feasibility of restoring natural capital in subtropical thicket in South Africa. In: Aronson, J., Milton, S.J., Blignaut, J.N. (Eds.), *Restoring Natural Capital: Business, Science, and Practice.* Island Press, Washington D.C., pp. 179–187.
- Milton, S.J., Dean, R.J., Richardson, D.M., 2003. Economic incentives for restoring natural capital in southern African rangelands. *Front. Ecol. Environ.* 1 (5), 247–254.
- Moreno-de las Heras, M., Nicolau, J.M., Espigares, T., 2008. Vegetation succession in reclaimed coal-mining slopes in a Mediterranean-dry environment. *Ecol. Eng.* 34, 168–178.
- Mullins, D., Mosaka, D.D., Green, A.B., Downing, R., Mapekula, P.G., 2007. *A Manual for Cost Benefit Analysis in South Africa with Specific Reference to Water Resource Development, Second ed.* Water Research Commission, Pretoria. Report No. TT 305/07.
- Navraj, P., Providoli, I., Bimal, R., Gandhiv, K., 2010. Valuing water and its ecological services in rural landscapes: a case study from Nepal. *Mountain Forum Bull.*, 32–34. Available online: http://www.forestrynepal.org/images/publications/pes_article_mountainforum_forcirculation.pdf (accessed: 14.11.12).
- Ndhlovu, T., 2011. Impact of Prosopis (mesquite) invasion and clearing on ecosystem structure, function and agricultural productivity in semi-arid Nama Karoo rangeland, South Africa. M.Sc. Thesis, University of Stellenbosch.
- Ndhlovu, T., Milton, S.J., Esler, K.J., 2011. Impact of Prosopis (mesquite) invasion and clearing on the grazing capacity of degraded semi-arid Nama Karoo rangeland, South Africa. *Afr. J. Range For. Sci.* 28 (3), 129–137.
- Nobre, A.M., Musango, J.K., De Wit, M.P., Ferreira, J.G., 2009. A dynamic ecological-economic modelling approach for aquaculture management. *Ecol. Econ.* 68, 3007–3017.
- Rees, W.E., Farley, J., Vesely, É.-T., de Groot, R., 2007. Valuing natural capital and the costs and benefits of restoration. In: Aronson, J., Milton, S.J., Blignaut, J.N. (Eds.), *Restoring Natural Capital: Business, Science, and Practice.* Island Press, Washington D.C., pp. 227–236.
- Rose, R., 2009. Personal Communication. Geohydrological and Spatial Solutions International (Pty) Ltd, Stellenbosch, November.
- Schiappacasse, I., Nahuelhual, L., Vásquez, F., Echeverría, C., 2012. Assessing the benefits and costs of dryland forest restoration in central Chile. *J. Environ. Manag.* 97, 38–45.
- Tischew, S., Baasch, A., Conrad, M., Kirmer, A., 2010. Evaluating restoration success of frequently implemented compensation measures: results, and demands for control procedures. *Restor. Ecol.* 18, 467–480.
- Turpie, J.K., Marais, C., Blignaut, J.N., 2008a. The Working for Water Programme: evolution of a payments for ecosystem services mechanism that addresses both poverty and ecosystem service delivery in South Africa. *Ecol. Econ.* 65, 789–799.
- Turpie, J.K., Clark, B.M., Cowley, P., Bornman, T., Terörde, A., 2008b. Integrated Ecological-economic Modelling as an Estuarine Management Tool: A Case Study of the East Kleinemonde Estuary. In: *Model Construction, Evaluation and User Manual, vol. II.* WRC Report No. 1679/2/08. Pretoria.
- Van der Horst, D., 2011. Adoption of payments for ecosystem services: an application of the Hågerstrand model. *Appl. Geogr.* 31, 668–676.
- Van Groenendaal, W.J.H., Kleijnen, J.P.C., 2002. Deterministic versus stochastic sensitivity analysis in investment problems: an environmental case study. *Eur. J. Operations Res.* 141, 8–20.
- Vandaele, N.J., Decouttere, C.J. *Sustainable R&D Portfolio Assessment.* Decision Support Systems, in press.
- Ventana Systems, 2007. *Vensim User's Guide Version 5.* Ventana Systems, Inc, Boston, MA.
- Vlok, H., 2010. Cost-benefit analyses of alien removal and natural capital restoration: case studies of the Agulhas Plain and Beaufort West local municipality. Unpublished Report, University of Stellenbosch and Western Cape Department of Agriculture.
- Wise, R.M., Cacho, O.J., 2005. Tree-crop interactions and their environmental and economic implications in the presence of carbon-sequestration payments. *Environ. Model. Software* 20, 1139–1148.
- Wu, J., David, J.L., 2002. A spatially explicit hierarchical approach to modeling complex ecological systems: theory and applications. *Ecol. Model.* 153 (1), 7–26.
- Wyssocki, R.K., 2009. *Effective Project Management: Traditional, Agile, Extreme, fifth ed.* Wiley Publishing, Indianapolis, IN.
- Yoe, C.E., Burks-Copes, K., Schultz, M.T., Suedel, B.C., 2009. *Addressing Risk and Uncertainty in Planning Ecological Restoration Projects.* U.S. Army Engineer Research and Development Center, Vicksburg, MS. EMRRP Technical Notes Collection. ERDC TN EMRRP-ER-13. <http://el.ercd.usace.army.mil/emrrp/emrrp.html> (accessed: 14.11.12).