




## Article

# De Novo SNP Discovery and Genotyping of Iranian *Pimpinella* Species Using ddRAD Sequencing

Shaghayegh Mehravi <sup>1</sup>, Gholam Ali Ranjbar <sup>2</sup>, Ghader Mirzaghaderi <sup>3</sup> , Anita Alice Severn-Ellis <sup>1</sup> , Armin Scheben <sup>4</sup> , David Edwards <sup>1</sup>  and Jacqueline Batley <sup>1,\*</sup> 

<sup>1</sup> School of Biological Sciences, University of Western Australia, Perth, WA 6009, Australia; Shaghayegh.mehravi@uwa.edu.au (S.M.); anita.severn-ellis@uwa.edu.au (A.A.S.-E.); dave.edwards@uwa.edu.au (D.E.)

<sup>2</sup> Department of Plant Breeding and Biotechnology, Faculty of Crop Sciences, Sari Agricultural Sciences and Natural Resources University, Sari 4818168984, Iran; ali.ranjbar@sanru.ac.ir

<sup>3</sup> Department of Agronomy and Plant Breeding, College of Agriculture, University of Kurdistan, Kurdistan, Sanandaj 6617715175, Iran; gh.mirzaghaderi@uok.ac.ir

<sup>4</sup> Simons Center for Quantitative Biology, Cold Spring Harbor Laboratory, Cold Spring Harbor, NY 11724, USA; scheben@cshl.edu

\* Correspondence: jacqueline.batley@uwa.edu.au; Tel.: +61-8-64885929

**Abstract:** The species of *Pimpinella*, one of the largest genera of the family Apiaceae, are traditionally cultivated for medicinal purposes. In this study, high-throughput double digest restriction-site associated DNA sequencing technology (ddRAD-seq) was used to identify single nucleotide polymorphisms (SNPs) in eight *Pimpinella* species from Iran. After double-digestion with the enzymes HpyCH4IV and HinfI, a total of 334,702,966 paired-end reads were de novo assembled into 1,270,791 loci with an average of 28.8 reads per locus. After stringent filtering, 2440 high-quality SNPs were identified for downstream analysis. Analysis of genetic relationships and population structure, based on these retained SNPs, indicated the presence of three major groups. Gene ontology and pathway analysis were determined by using comparison SNP-associated flanking sequences with a public non-redundant database. Due to the lack of genomic resources in this genus, our present study is the first report to provide high-quality SNPs in *Pimpinella* based on a de novo analysis pipeline using ddRAD-seq. This data will enhance the molecular knowledge of the genus *Pimpinella* and will provide an important source of information for breeders and the research community to enhance breeding programs and support the management of *Pimpinella* genomic resources.

**Keywords:** *Pimpinella*; ddRAD Sequencing; SNP markers; population structure; de novo analysis; gene ontology



**Citation:** Mehravi, S.; Ranjbar, G.A.; Mirzaghaderi, G.; Severn-Ellis, A.A.; Scheben, A.; Edwards, D.; Batley, J. De Novo SNP Discovery and Genotyping of Iranian *Pimpinella* Species Using ddRAD Sequencing. *Agronomy* **2021**, *11*, 1342. <https://doi.org/10.3390/agronomy11071342>

Academic Editor: Cseh Andras

Received: 26 May 2021

Accepted: 28 June 2021

Published: 30 June 2021

**Publisher's Note:** MDPI stays neutral with regard to jurisdictional claims in published maps and institutional affiliations.



**Copyright:** © 2021 by the authors. Licensee MDPI, Basel, Switzerland. This article is an open access article distributed under the terms and conditions of the Creative Commons Attribution (CC BY) license (<https://creativecommons.org/licenses/by/4.0/>).

## 1. Introduction

The genus *Pimpinella* belongs to the family Apiaceae, together with 250 other genera [1]. Over 46 species of this genus are distributed in the Eastern Mediterranean Region, West Asia, the Middle East, Mexico, Iraq, Turkey, Iran, India, Egypt, Spain and many other warm regions of the world [2]. They are annual or perennial semi-bushy aromatic plants with bisexual flowers with five stamens and two carpels. Species of the genus *Pimpinella* grow under different climatic conditions and types of soil. The *Pimpinella* species is known as “Jafari koochi” in Persian, and is commonly used as an aromatic plant and traditionally as a food flavouring, for relief of gastrointestinal spasms and as a carminative digestive [3]. Different species of *Pimpinella* are famous for their antispasmodic, antioxidant, antimicrobial, expectorant, estrogenic, acaricide, insecticidal, anticonvulsant and antifungal properties [4,5]. The valuable therapeutic aspects of *Pimpinella* are mostly correlated with the existence of sesquiterpenes, phenolic compounds, flavonoids, coumarins, phenylpropanoids and essential oils [6]. The major constituents of the essential oils are kaempherol, quercetin and anethole [7].

There are more than 22 *Pimpinella* species in Persian flora [8]. *P. anisum*, *P. deverroides*, *P. eriocarpa*, *P. aurea*, *P. tragium*, *P. affinis* and *P. tragioides* are some of the most common species, which grow in different regions of Iran. In Iran, *Pimpinella* had a cultivation area of approximately 6,125 ha and seed production of approximately 6,381 ha and seed production of approximately 106,248 tons in 2019 (Food and Agriculture Organization, <http://faostat.fao.org> (accessed on 14 September 2019)). However, the annual production of *Pimpinella* species is considerably affected by many factors including biotic and abiotic components of the ecosystem and genetic potential of the cultivars [9,10].

Currently, there is limited genomic information available for the *Pimpinella* genus. As such, although *Pimpinella* are highly valuable spice plants with pharmacological benefits, data about their genetic and genomic relationships, especially among those species native to Iran, remains limited. Extensive genetic and genomic investigations must be conducted for comprehensive understanding of the *Pimpinella* genome to enhance productivity, improve quality and develop cultivars that are resilient to biotic and abiotic stresses.

DNA based molecular markers are now increasingly being employed to accelerate plant breeding programs through marker-assisted selection for increasing yield in the germplasm and to understand the molecular mechanisms underlying genetic traits. Different genetic markers, including Inter-simple sequence repeat (ISSR), randomly amplified polymorphic DNA (RAPD) [11], internal transcribed spacer (ITS) [12,13], nuclear rDNA ITS [14] and cpDNA rps16 intron and rpl16 intron [15] have been used in the analysis of genetic diversity, phylogenetic analyses and construction of genetic linkage maps of *Pimpinella* germplasm.

Single-nucleotide polymorphisms (SNPs) are considered excellent markers for genotyping, with advantages of cost-effectiveness, flexibility, low error rate and suitability for high throughput screening [16]. SNP markers can also easily and inexpensively be converted to develop high-quality assays, which could be used to support *Pimpinella* breeding programs. In recent years, genome-wide SNP discovery and genotyping have been accelerated with the aid of next generation sequencing (NGS) technology. Restriction site-associated DNA sequencing (RAD-seq) and genotyping by sequencing (GBS) have been increasingly used in genetic and genomic studies in various plant taxa such as onion [17,18], kiwifruit [19], bread wheat [20,21], chickpea [22], soybean [23], carrot [24] and strawberry [25]. RAD-seq is also an efficient method of large scale de novo SNP discovery and genotyping using high-throughput sequencing of large sample sets in a single experiment. Recently Peterson et al. [26] established a double-digest restriction-associated DNA sequencing (ddRAD-seq) method for large scale polymorphism discovery in complex genomes with higher accuracy than GBS.

In the present study, we performed paired-end (PE) ddRAD-seq to develop a novel genome-wide SNP resource from *Pimpinella* species cultivated in Iran. Filtered high-quality SNPs from eight *Pimpinella* species were used to identify population structure and genetic relationships. Further, we functionally annotated SNP flanking sequences to determine similarity with known genes and biological functions.

## 2. Materials and Methods

### 2.1. Plant Material and DNA Extraction

Eight species of *Pimpinella* (*P. aurea* L., *P. anisum* L., *P. affinis*, *P. kotschyana*, *P. tragioides*, *P. eriocarpa*, *P. tragium* and *P. barbata*) were obtained from the Gene bank of the research institute of forests and rangelands of Tehran, Iran, as described in Table S1. Before sowing, the seeds were sterilized for 5 min in 10% sodium hypochlorite solution (Sigma-Aldrich, Saint Louis, MI, USA) and then in 96% ethanol for 1 min and thoroughly washed with distilled water thereafter [27]. The seeds were sown in 30 cm × 30 cm plastic pots containing 3 kg of soil mixture composed of 15% silt, 15% clay and 70% sand. The plants were grown in a glasshouse located in the University of Western Australia (UWA), Perth, Australia, with 14 h photoperiod, 55–65% humidity and 30/18 °C day/night temperature. Young leaf tissue from one plant of each species was flash frozen in liquid nitrogen, ground to a fine

powder and stored at  $-20\text{ }^{\circ}\text{C}$ . High quality nuclear DNA was extracted using the DNeasy Plant Mini Kit (QIAGEN, Hilden, Germany) according to the manufacturer's protocol. The resulting DNA was quantified using the Qubit 3.0 Fluorometer (Invitrogen, Carlsbad, CA, USA) with the Qubit dsDNA BR Assay Kit (Invitrogen, Carlsbad, CA, USA). The DNA quality was assessed using the LabChip GX Touch 24 (PerkinElmer, Waltham, MA, USA).

## 2.2. ddRAD Library Preparation

ddRAD libraries were prepared according to the method described by Severn-Ellis et al. [28] using 200 ng of extracted DNA. The DNA from each sample was restriction-digested in a total volume of 18  $\mu\text{L}$ , containing 5 units each of HpyCH4IV and HinfI, as well as NEB 10  $\times$  CutSmart Buffer (New England Biolabs, Ipswich, MA, USA). The reaction was incubated at  $37\text{ }^{\circ}\text{C}$  for 4 h. Barcoded and common adapters were designed as described by Peterson et al. [26] to complement the restriction overhangs created by HpyCH4IV and HinfI respectively. Each restriction-digested sample was then ligated to a unique 5' barcoded adapter and a common 3' adapter. Ligation reactions were carried out in 40  $\mu\text{L}$  containing the restriction-digested sample, 0.23  $\mu\text{M}$  of the common adapter and 0.5  $\mu\text{M}$  barcoded adapter, respectively, 1U T4 DNA ligase (Invitrogen, Carlsbad, CA, USA), 8  $\mu\text{L}$  T4 ligation buffer (Invitrogen, Carlsbad, CA, USA) and 7  $\mu\text{L}$  of nuclease-free water. Ligation reactions were in-cubated at  $22\text{ }^{\circ}\text{C}$  for 2 h and then heat inactivated at  $65\text{ }^{\circ}\text{C}$  for 20 min.

Purification and double size selections of the ligated samples was carried out to remove un-ligated adapters and simultaneously select fragments between 250 and 800 bp in size. To remove DNA fragments  $>800$  bp the sample volume was increased to 100  $\mu\text{L}$  by adding 60  $\mu\text{L}$  of nuclease water and then transferred to a 96-well PCR plate containing 50  $\mu\text{L}$  of a 1:4 (0.5 $\times$ ) mixture of AMPure XP Beads (Beckman Coulter, Brea, CA, USA) to PEG buffer (20% PEG *w/v*, 2.5 M NaCl). After incubation, the beads were collected on a magnetic stand (Invitrogen, Carlsbad, CA, USA). The supernatant was transferred to 20  $\mu\text{L}$  of a 1:1 AMPure XP Beads to PEG buffer (0.7 $\times$ ) mix for the second bead bind to remove fragments  $<250$  bp. The supernatant was removed and the beads containing the size selected sample DNA were washed using 80% ethanol. The DNA was eluted in 30  $\mu\text{L}$  nuclease free water.

To enrich the ligated and size selected DNA, PCR amplification was performed using 10  $\mu\text{L}$  of size selected DNA, 25  $\mu\text{L}$  of Phusion Hot-Start High-Fidelity Master Mix (Thermo Fisher Scientific, Waltham, MA, USA), 0.5  $\mu\text{M}$  of the PCR1 and 0.5  $\mu\text{M}$  indexed PCR2 primers, respectively. Nuclease-free water was added to bring the final volume to 50  $\mu\text{L}$ . The PCR primers used were specific to each adapter and comprised of an Illumina index sequence and flow cell annealing complementary sequences [26]. Amplification was carried out at  $98\text{ }^{\circ}\text{C}$  for 2 min, 12–18 cycles of  $98\text{ }^{\circ}\text{C}$  for 15 s,  $62\text{ }^{\circ}\text{C}$  for 30 s,  $72\text{ }^{\circ}\text{C}$  for 30 s, final extension for 5 min at  $72\text{ }^{\circ}\text{C}$  and held at  $4\text{ }^{\circ}\text{C}$  on an Applied Biosystems Veriti Thermal Cycler (Thermo Fisher Scientific, Waltham, MA, USA).

PCR products were purified to remove residual primers and primer dimers in a 1.5X Ampure XP Bead cleanup step. The DNA concentration of each sample was determined using the Qubit High Sensitivity (HS) assay (Invitrogen; Waltham, MA, USA). The quality of individual libraries and median fragment size was assessed on the LabChip GX Touch (PerkinElmer, Waltham, MA, USA) using the HT DNA HiSens Dual Protocol Reagents (PerkinElmer, Waltham, MA, USA). Equimolar amounts (20–30 nM) of the prepared libraries were pooled. The pooled library underwent a final 0.8X Ampure XP bead cleanup to remove any remaining residual fragments shorter than 200 bp. The concentration of the final bead-cleaned library was determined in preparation for sequencing. Sequencing was carried out at the Garvan Institute of Medical research (Darlinghurst, NSW, Australia), on the Illumina HiSeq XTen (Illumina, San Diego, CA, USA) sequencing platform.

## 2.3. Sequence Quality Analysis and Filtering

Sequence reads were de-multiplexed by using the outer dual index bar-code information using STACKS v.2.1 pipeline (Institute of Ecology and Evolution, University of

Oregon, Eugene, OR, USA) [29] and assigned to sequenced species. Average read quality and unpaired reads, presence of repetitive sequences and adapter read-through and GC-content were checked using FastQC v.0.11.4 (Babraham Hall, Babraham Research Campus Cambridge, UK) [30] and multiQC v.1.7 (Department of Biochemistry and Biophysics, Stockholm University, Stockholm, Sweden) [31]. Reads containing the correct restriction sites in R1 and R2 were obtained by searching restriction site sequences in the raw reads respectively. Adapter and sequence trimming were performed using Trimmomatic v.0.36 [32] with default settings and reads were truncated to a uniform 146 bp (R1) and 151 bp (R2), with all shorter reads being discarded.

#### 2.4. De Novo Assembly, Read Alignment and SNP Identification

De novo mapping and SNP calling was performed using STACKS. De novo assembly was carried out with a minimum stack size of three reads ( $m = 3$ ) and a maximum distance between stacks of three ( $M = 3$ ). Sample-specific stacks were assembled into homologous stacks if they had a maximum distance of three nucleotides ( $n = 3$ ) between samples. To limit false SNP identification and increase accuracy of downstream analyses, SNPs with a minor allele frequency (MAF)  $< 0.05$  and more than two missing genotype calls were discarded using VCFtools 0.1.15 (Wellcome Trust Sanger Institute, Cambridge, UK) [33].

#### 2.5. Phylogenetic Tree Construction of Eight *Pimpinella* Species and Principal Component Analysis

A maximum likelihood (ML) phylogeny was inferred based on the filtered SNPs using RAXML v. 8.2.11 (Department of Informatics, Institute of Theoretical Informatics, Germany) [34]. Maximum likelihood searches were conducted in RAXML using a model with ascertainment bias correction (ASC\_GTRGAMMA) for sequence data, and a rapid bootstrapping analysis with 100 bootstraps was conducted. A random SNP was retained for each ddRAD locus in order to remove physically linked SNPs for Principal component analysis (PCA). PCA of filtered SNP data was conducted using the R package SNPRelate (Department of Biostatistics, University of Washington, Seattle, WA, USA) [35]. After converting VCF to GDS format, linked SNPs were removed based on co-location using the sngdsLDpruning function.

#### 2.6. Functional Analysis of SNP-Associated Contigs

For functional annotation, SNP-associated scaffold sequences that might putatively encode proteins were searched against the non-redundant protein database at the National Center for Biotechnology Information (NCBI) (Bethesda, Bethesda, MD, USA) with minimum E-value of  $< 1.0 \times 10^{-6}$  as the threshold. The most comparable sequence matches for each SNP-associated contigs was selected and used to find Gene Ontology (GO) terms using EMBL eggNOG mapper (Structural and Computational Biology Unit, European Molecular Biology Laboratory, Heidelberg, Germany) [36]. The three major GO terms, cellular component (CC), biological process (BP) and molecular function (MF) were determined with e-value hit filter  $< 1.0 \times 10^{-6}$ . In a final step, details of pathway annotated SNP-associated contigs was performed using the Kyoto Encyclopedia of Genes and Genomes (KEGG) database (<http://www.genome.ad.jp/> accessed on 1 January 2000) [37].

### 3. Results

#### 3.1. Genotyping-by-Sequencing Library Construction and Sequencing

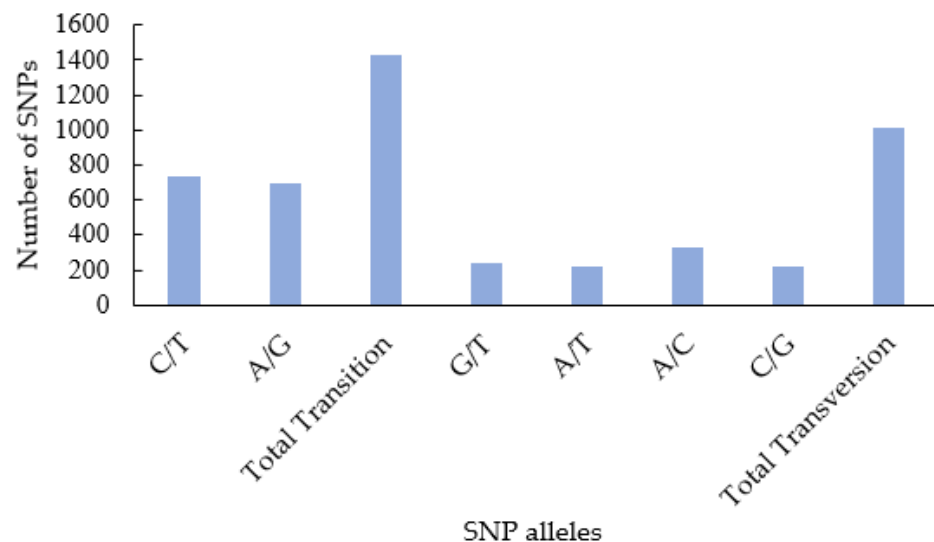
A total of 334,702,966 raw paired-end reads were generated. After cleaning the raw data, we obtained 311,040,452 reads, which were subjected to further trimming and demultiplexing. A total of 1,279,850 contigs with an effective per-sample mean coverage of  $27.7\times$ , were de novo assembled. The minimum and maximum lengths of the contigs were 146 and 545 bp, respectively, with an average of 247 bp. The GC content was in the range of 39.5–40.5%. The highest number of SNPs were obtained using a maximum distance

between RAD stacks of 6 and a maximum mismatch of 6 between sample loci in the catalog (Table S2).

### 3.2. SNP Calling and Filtering

We selected 1,279,850 contigs from the de novo assembly with a length of 146–151 bp for SNP calling based on Illumina maximum read length. In total, 1,270,791 SNPs were predicted from 625,507 assembled contigs. We then filtered 2440 high-quality SNPs from 625,507 contigs based on a minimum stack size of three reads ( $m = 3$ ) and a maximum distance between stacks of three ( $M = 3$ ) and a maximum distance of three nucleotides ( $n = 3$ ) between samples. After the quality and depth filtering, a mean of 7.8% of SNPs were removed. A statistical summary of data collected about raw reads, cleaned reads are summarized.

Distributions of each type of SNP were as follows: A/G, 698 (28.6%); C/T, 734 (30%); A/T, 219 (8.9%); A/C, 332 (13.6%); C/G, 215 (8.8%) and G/T, 242 (9.9%) (Figure 1). Of the 2440 identified SNPs, 1432 (58.7%) were classified as transitions (A/G or C/T) and 1008 (41.3%) were classified as transversions (A/T, A/C, C/G and G/T) (Figure 1).



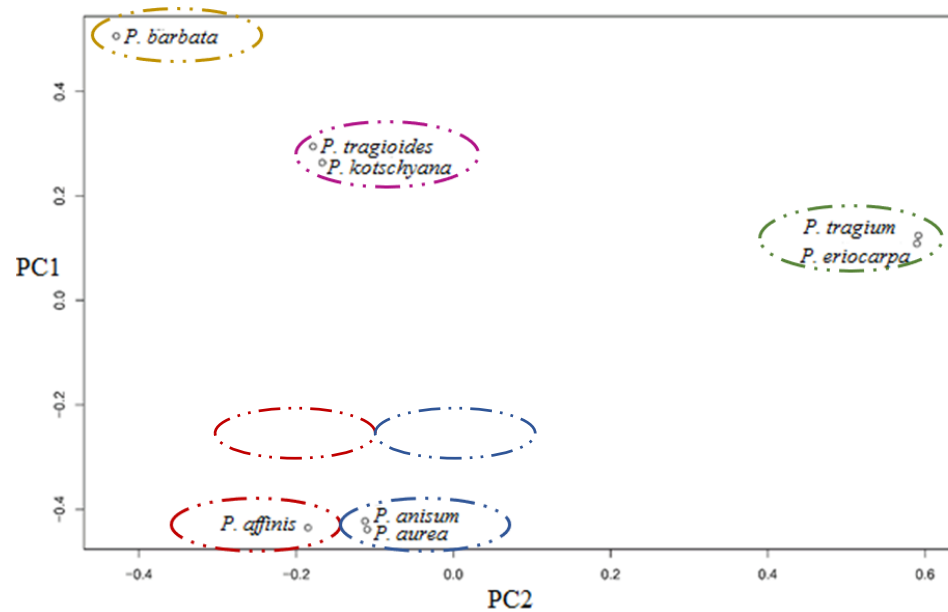
**Figure 1.** Histogram plot showing SNP distribution and transition/transversion from SNPs identified from de novo ddRAD-sequencing.

### 3.3. Population Structure and Genetic Relationship Analysis

The heterozygosity and percentage of polymorphic loci showed that the observed heterozygosity ( $H_0$ ) was higher than the expected heterozygosity ( $H_e$ ). The mean  $H_0$  and  $H_e$  of the *Pimpinella* among the eight species were calculated as 0.67 and 0.49, respectively (Table S3). In addition, the mean percentage of polymorphic loci observed among the eight species were found to be 20.05.

PCA was used to assess the diversity in the *Pimpinella* species using information from filtered SNP. From 2440 high-quality SNPs detected in *Pimpinella* species, 774 unlinked SNPs were used for PCA analysis. The first two principal components (PC1 and PC2) explained 27.9% and 24.5% of the total variance and they were projected in a two-dimensional graphic (Figure 2). PC1 separated the *P. barbata* from other species while PC2 separated *P. tragium* and *P. eriocarpa*.

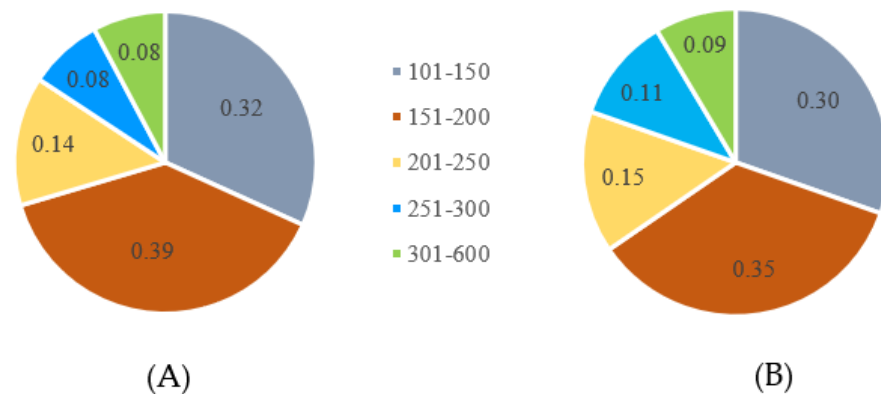




**Figure 2.** Diagram resulting from the analysis of principal components of the studied species of *Pimpinella*.

### 3.4. Functional Analysis of SNP-Associated Scaffolds

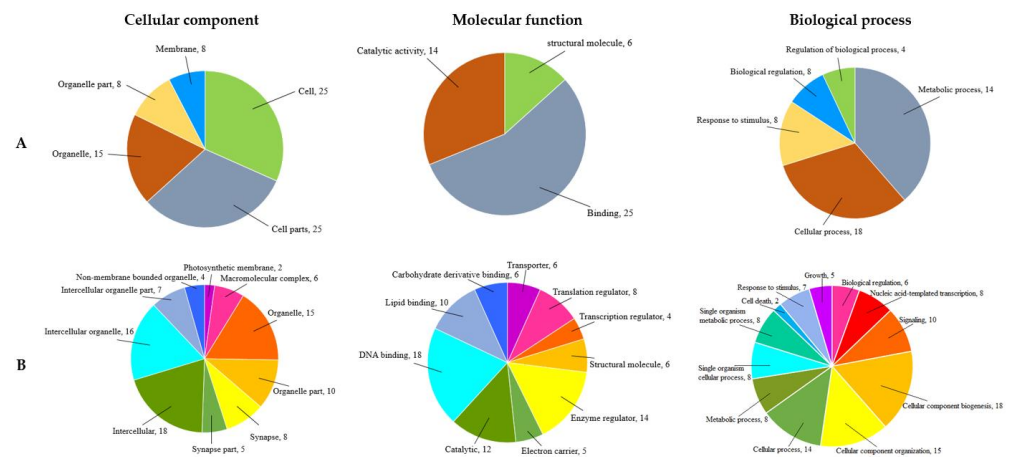
A total of 642 contigs were searched against the nr (BLASTX) (NCBI non-redundant protein sequences) via BLAST 2.5.0 (NCBI, Bethesda, MD, USA). with a minimum E-value of  $< 1.0 \times e^{-6}$  as a similarity threshold (Table S4). Similarity results were obtained from 98 of the 642 contigs corresponding to known protein sequences. The remaining 544 contigs did not match with any known protein sequences (Figure 3A,B).



**Figure 3.** Sequence length distribution from the de novo assembly (A), number of sequences annotated with BLAST hits (B).

The 98 BLAST hits mainly matched with *Daucus carota* genes. Seventeen unknown carrot genes with aligned RAD contigs were characterized using eggNOG 5.0. (Structural and Computational Biology Unit, Euro-pean Molecular Biology Laboratory, Heidelberg, Germany). In total, from 642 RAD contigs 66.4% (426) and 61.5% (395) were intersected genes and intersected exons, respectively. In addition, functional annotations resulted in 496 GO terms (Table S5). These 496 GO terms were further classified into three functional categories such as cellular component (CC, 198 GO terms), molecular function (MF, 88 GO terms) and biological process (BP, 210 GO terms) [38]. Some contigs matched with more than one GO term, whereas a few matched only one GO term. Cellular component annotations were further sub-classified into five main levels of predominant GO subcategories: (1) cell (category I; GO: 0005623) and cell parts (category II; GO: 0044464) were associated

with 25 contigs; organelle (category III; GO: 0043226) was associated with 15 contigs and the organelle part category (category IV; GO: 0044422) was associated with 8 contigs; the membrane category (category V; GO: 0016020) was associated with 6 contigs. Most contigs in the MF category were associated with three main GO subcategories: structural molecule (category I, GO: 0005198) with 6 contigs, binding (category II, GO: 0005488) with 25 contigs and catalytic activity (category III, GO: 0003824) with 14 contigs. Biological processes were also categorized into five subcategories: metabolic process (category I; GO: 0008152) with 22 contigs; cellular process (category II, GO: 0009987) with 18 contigs; response to stimulus (category III, GO: 0050896) with 8 contigs; biological regulation (category IV, GO: 0065007) with 5 contigs and regulation of biological process (category VI, GO: 0050789) with 4 contigs (Figure 4A). The level of 3 GO terms with 32 functional groups are plotted in Figure 4B. More than half of the genes were not annotated in this study, likely due to the sequence lengths and depth SNP or scaffold coverage mean, as is common in studies performing de novo analysis [39,40]. In addition, some of these genes might be unique to *Pimpinella* species.



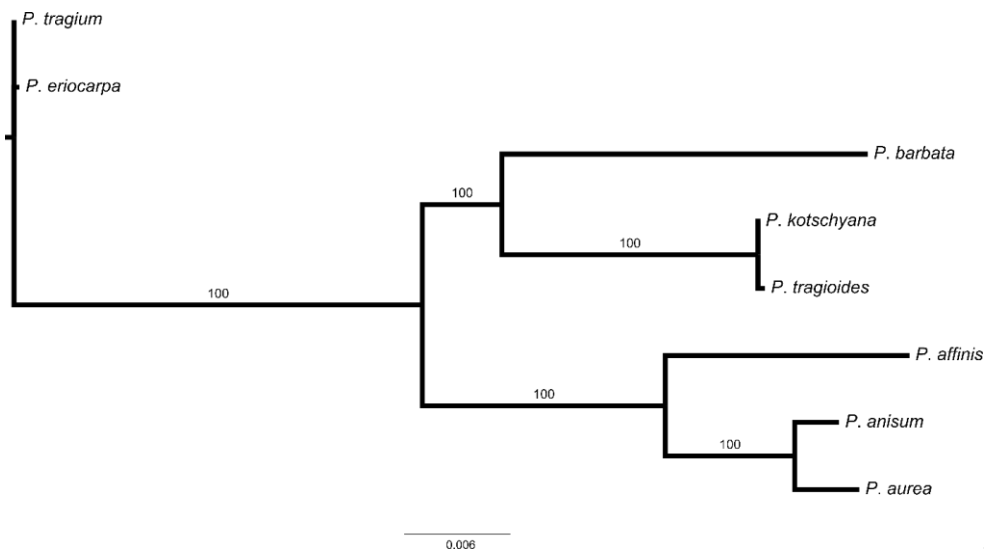
**Figure 4.** Level 2 (A) and level 3 (B) Gene Ontology classifications of the SNP-associated contig identified from ddRAD-sequencing.

Analysis of pathway details from annotation results shows that seven contigs are involved in seven different pathways (Table 1). Based on the greatest number of contigs identified in each functional category, the categories detected most often were energy metabolism.

**Table 1.** Pathway details of annotated SNP-associated contigs.

Pathway ID	KEGG Pathway	Number of Sequences	Enzyme
map03030	DNA replication	1	DNA ligase [EC:6.5.1.1] RNA
map03020	RNA polymerase	1	nucleotidyltransferase [EC:2.7.7.6]
map00270	Cysteine and methionine metabolism	1	Adenosylhomocysteinase [EC:3.3.1.1]
map00190	Oxidative phosphorylation	1	Ubiquinone reductase [EC:7.1.1.2], ATP synthase [EC:3.6.3.14]
map00195	Photosynthesis	1	Photosystem II [EC:1.10.3.9]
map00143	Metabolic pathways	1	NADH dehydrogenase [EC:7.1.1.2]

A phylogenetic tree using maximum likelihood method was constructed on the basis of identified SNPs. The result revealed that eight *Pimpinella* species are clearly separated into three clusters. The first cluster is comprised of *P. tragiium*, the second cluster of *P. eriocarpa* and the third cluster of *P. barbata*, *P. tragioides*, *P. kotschyana*, *P. tragiium*, *P. aurea* and *P. anisum* (Figure 5).



**Figure 5.** Phylogenetic reconstruction of eight *Pimpinella* species by Maximum likelihood method. Numbers at the nodes are Bootstrap values from 100 replications.

#### 4. Discussion

Detailed characterization of the genetic structure of species is one of the most important prerequisites in the application of breeding programs and efficient protection and use of plant genetic resources [41,42]. Thus, ddRAD is considered as one of most reliable and powerful approaches to provide more effective SNP genotyping. To date, relatively few studies have examined the genetic structure and relationships between *Pimpinella* species using a PCR-based approach [4,12,13,43]. Furthermore, only two studies, by Wang et al. [15] and Fereidounfar et al. [44], examined the phylogenetic relationships and these used nrDNA ITS and cpDNA intron sequence data. In this study, we set out to use ddRAD-seq to discover genome-wide SNPs in Iranian endemic *Pimpinella* species in a cost- and time-efficient manner. To achieve this purpose, we selected the *Hinf*I and *Hpy*CH4IV enzyme combination which led to a sufficient read depth to perform SNP calling across different species in the absence of a reference genome. Only 39.0% of the trimmed contigs were aligned using the reads, possibly due to the stringent parameters used by the STACKS de novo to minimize multiple mapping. A similar limitation was also reported for genome-wide SNP discovery in *Capsicum annuum* germplasm [45].

In the present study, a total of 334,702,966 raw paired-end reads were produced. This high number of raw sequencing reads among the eight *Pimpinella* species reflected reduced levels of contamination and unexpectedly low sequence repeats. We applied STACKS de novo for SNP calling, which filled the specifications required for SNP discovery from the trimmed reads in the absence of a reference genome sequence [46]. Using this tool, we eliminated low-quality and contaminated reads using efficient filtering criteria. Regardless of the complexities included, 2440 SNPs were identified in this investigation after the initial quality check. The average SNP frequency, 1.5 SNP per 100 bp of filtered ddRAD loci, was higher than the SNP frequency in Apiaceae family [24]. Identification of SNPs obtained from this study maximizes the probability of finding efficient molecular markers in *Pimpinella*. Such moderate frequency of SNPs retained after the initial quality check in *Pimpinella* species indicates the importance of generating genome-wide SNPs, which, critically, include markers from transcribed regions and regulatory regions [17].

A major challenge encountered by all genotyping methods has been the difficulty of aligning true alleles of each single locus in plants for which whole-genome sequences and reference genome are not available, such as the *Pimpinella* genus. In addition, information on the levels of heterozygosity within a selected species would be of value for elucidating the underlying population structure, for calculating minimum population sizes required



for maintaining genetic diversity and also for future estimations of genetic gain [17,47]. Our method and selected tools have effectively calculated the heterozygosity and excluded only 175 SNPs, or 7.2% of the quality filtered SNPs. This value is lower and higher than has been previously reported by Duangjit et al. [48] and Jo et al. [17] which consisted of 12.7% and 5.9% heterozygous SNPs. The lower frequency of heterozygous calls could be attributed to the bias arising from our relatively small sample size [49]. The number of SNPs identified in this study was restricted by the capture of a reduced portion of the genome following the combination of the HinfI and HpyCH4IV enzymes and stringent SNP calling by stacks. Although, additional SNPs could have been identified by increasing the value of *M* and *n* in species with higher level of polymorphism [50,51].

The C/T allele (734, 30%) occurred most frequently between SNP alleles. Similar results were also observed in other species including *Allium cepa* [18,39], *Brassica napus* [52], *Cucumis melo* [53] and oil palm [54]. The transition/transversion ratio in this study was 1.42, which is lower than has been previously reported in *Triticum aestivum* L. (1.75) [20], *Oryza sativa* (2.3) [55], *Arachis hypogaea* (3.2) [54] and *Allium cepa* (2.53) [18]. This is the first study in *Pimpinella* to develop genome-wide SNPs using the GBS method without a reference genome. However, de novo assembly was successfully used to design a SNP array, construct linkage maps, high density genetic and transcriptome analyses in *Allium cepa* [39], *Cicer arietinum* L. [22] and *Hordeum vulgare* [56]. Thus, the identified SNPs with associated flanking sequences can be usable for high-throughput validation assays in *Pimpinella* breeding programs.

The relatively higher frequency of observed heterozygosity than expected for this study suggests that this species may have recently experienced a genetic bottleneck [57]. In Eucalyptus populations, a similar effect was reported with  $H_0 > H_e$  [58]. The low percentage of polymorphic loci among species indicates significant heterogeneity of genetic architecture among species as well as gene-by-environment effects [59,60].

Maximum likelihood phylogenetic construction based on 2440 filtered SNPs generally grouped the eight species of *Pimpinella* into three main clusters. Cluster 3 had the most species including *P. barbata*, *P. kotschyana*, *P. tragioides*, *P. affinis*, *P. anisum* and *P. aurea*. The species of *P. tragiium* and *P. eriocarpa* created a separate cluster. The results of this study suggest that the species within one cluster have the most homology in SNP loci. Iranian *Pimpinella* has been rarely studied from molecular viewpoint. Consistent with previous data [44], a close correlation was observed between geography and the phylogenetic tree in our analysis. *P. tragiium* is south of the East European native and constituted an early diverging cluster and formed a sister cluster to Southwest Asia *Pimpinella*. It has been suggested that *P. tragiium* is the origin of the predominantly herbaceous Apiaceae subfamily Apioideae, and chromosome base number of  $x = 8$ . However, all species of *Pimpinella* from Southwest Asia origin fall within a cluster. Based on nuclear region IITS and cpDNA within the context of the genus *Pimpinella*, Fereidounfar et al. [44] placed some Iranian species in one tribe. Recently, molecular studies grouped *P. affinis*, *P. aurea*, *P. tragioides*, *P. barbata* and *P. kotschyana* based on nuclear region IITS and cpDNA [44]. Our phylogenetic trees were consistent with those previously reported, such that *P. tragiium* and *P. eriocarpa* are considered a separate group within *Pimpinella* [44]. One of the greatest advantages of using ddRAD-seq for phylogenetic reconstruction, as opposed to the traditional methods of using one to several genes, is that the ddRAD approach samples data from many loci among the entire genome. This suggests that ddRAD-seq data could be profitably applied to methods for multi-locus species tree estimation. RAD-seq are usually considered applicable for phylogenetic reconstruction in species in which sufficient numbers of orthologous restriction sites are retained among species [61].

Estimation of genetic distance between species is one of useful tools for species registration and protection and parental selection in *Pimpinella* hybridization programs. Cluster and PCA analysis are appropriate methods in genetic diversity identification, tracing the pathway of the evolution of species, parental selection and center of origin and diversity [62]. In this study, we performed PCA on the SNPs data using different species.

PCA result illustrated three main groups of *Pimpinella* species. This technique has been used with great success in a number of recent population genetic studies [63–65]. The result of ML and PCA may have relative differences from each other due to the use of the only first two components in the PCA. When the two first principal components account for high variation percentage, clustering according to these two components can be a useful method to find the clusters. However, cluster analysis based on PCA is a more explicit indicator of differences among species than cluster analysis without PCA based [66].

Within the detected SNPs, the 58.7% of transition (A/G, C/T) type were found in *Pimpinella* species. Transversions (A/T, A/C, C/G and G/T) SNP ratios in *Pimpinella* species can be used to measure the genetic distance between the species. Transitions polymorphism occurred more frequently than transversions, consistent with the nature of these changes [67].

In total, BLASTX searches against the non-redundant protein database identified 98 of the 642 contigs corresponding to known protein sequences, whereas 544 contigs did not match with any known protein sequence, suggesting that our Illumina paired-end sequencing were unique to Iranian *Pimpinella* species.

Analysis of metabolic pathway from annotation results showed that seven different pathways, including amino acids metabolism, DNA replication, RNA replication and energy metabolism, were identified. Overall, these pathway details from ddRAD-sequencing will provide valuable information for understanding more about Iranian *Pimpinella* species.

Plant breeders have always been interested in selecting plant materials based on their germplasm collections, long-term consistent assistance and relatedness limitations to support breeding programs. Relatedness analysis helps plant breeders to understand the backgrounds of their plant materials [18]. In studies on *Vigna unguiculata* [68] and *Allium sativum* [69], this model was used in genomic selection and association-related studies.

In this study, the data collection and analysis process provided a novel step forward in the use of ddRAD data to address questions in *Pimpinella* species genomic structure. We show that the reduced representation genotyping approach is an alternative method to whole-genome resequencing with using restriction site associated DNA sequencing (RAD-Seq).

## 5. Conclusions

In this study, we identified highly valuable SNP resources from Iranian *Pimpinella* species using ddRAD-seq analysis. In our literature review, this is the first report of de novo analysis pipeline being used for the discovery of SNPs in Iranian *Pimpinella* species. Our investigation provides high-quality SNPs, with details of their genetic structure and their annotated functions, and will be useful for deepening our understanding of *Pimpinella* genomic resource for genetic diversity and relatedness among species, marker-assisted selection programs, trait dissection, breeding and high-density map development.

**Supplementary Materials:** The following are available online at <https://www.mdpi.com/article/10.3390/agronomy11071342/s1>, Table S1: List of the eight *Pimpinella* species, latitude, longitude, altitude, mean temperature, mean rain-fall and locations assigned in this study, Table S2: Population statistics calculated using populations, Table S3: Population statistics calculated using populations (STACKS) for de novo mapping (-M 3 -n 3), Table S4: BLAST results of SNP-associated sequences from Korean onion accessions compared with the non-redundant (nr) protein database., Table S5: Gene Ontology (GO) annotations of Korean onion accessions.

**Author Contributions:** J.B., G.M. and G.A.R. conceived and designed this study. S.M. and A.A.S.-E. isolated the DNA and conducted experiments. A.A.S.-E., A.S. and S.M. conducted all statistical analysis and prepared the figures. S.M. wrote the manuscript. J.B., G.M., D.E., A.S. and G.A.R. revised the manuscript. All authors have read and agreed to the published version of the manuscript.

**Funding:** This research was supported by the Western Australia University, Perth province, Australia.

**Institutional Review Board Statement:** Not applicable.

**Informed Consent Statement:** Not applicable.

**Data Availability Statement:** Raw sequencing reads are available at pim3.filt.vcf—Google Drive.

**Conflicts of Interest:** The authors declare no conflict of interest.

## References

- Iovene, M.; Grzebelus, E.; Carputo, D.; Jiang, J.; Simon, P.W. Major cytogenetic landmarks and karyotype analysis in *Daucus carota* and other Apiaceae. *Am. J. Bot.* **2008**, *95*, 793–804. [[CrossRef](#)]
- Pourgholami, M.; Majzoob, S.; Javadi, M.; Kamalinejad, M.; Fanaee, G.; Sayyah, M. The fruit essential oil of *Pimpinella anisum* exerts anticonvulsant effects in mice. *J. Ethnopharmacol.* **1999**, *66*, 211–215. [[CrossRef](#)]
- Özcan, M.M.; Chalchat, J.C. Chemical composition and antifungal effect of anise (*Pimpinella anisum* L.) fruit oil at ripening stage. *Ann. Microbiol.* **2006**, *56*, 353–358. [[CrossRef](#)]
- Fujimatu, E.; Ishikawa, T.; Kitajima, J. Aromatic compound glucosides, alkyl glucoside and glucide from the fruit of anise. *Phytochemistry* **2003**, *63*, 609–616. [[CrossRef](#)]
- Tirapelli, C.R.; de Andrade, C.R.; Cassano, A.O.; De Souza, F.A.; Ambrosio, S.R.; da Costa, F.B.; de Oliveira, A.M. Antispasmodic and relaxant effects of the hidroalcoholic extract of *Pimpinella anisum* (Apiaceae) on rat anococcygeus smooth muscle. *J. Ethnopharmacol.* **2007**, *110*, 23–29. [[CrossRef](#)]
- Güvenalp, Z.; Ozbek, H.; Yuzbasioglu, M.; Kuruuzum-Uz, A.; Demirezer, L.O. Flavonoid Quantification and Antioxidant Activities of Some *Pimpinella* species. *Rev. Anal. Chem.* **2010**, *29*, 233–240. [[CrossRef](#)]
- Kuruüzüm-Uz, A.; Güvenalp, Z.; Yuzbasioglu, M.; Özbek, H.; Kazaz, C.; Demirezer, L. Flavonoids from *Pimpinella kotschyana*. *Planta Medica* **2010**, *76*, 274. [[CrossRef](#)]
- Mozaffarian, V. Studies on the flora of Iran, new species and new records. *Pak. J. Bot.* **2002**, *34*, 391–396.
- Awad, N.M.; Turky, A.S.; Mazhar, A. Effects of bio-and chemical nitrogenous fertilizers on yield of anise *Pimpinella anisum* and biological activities of soil irrigated with agricultural drainage water. *Egypt. J. Soil Sci.* **2005**, *45*, 265.
- Zheljzakov, V.D.; Callahan, A.; Cantrell, C.L. Yield and Oil Composition of 38 Basil (*Ocimum basilicum* L.) Accessions Grown in Mississippi. *J. Agric. Food Chem.* **2008**, *56*, 241–245. [[CrossRef](#)] [[PubMed](#)]
- Giachino, R.R.A. Investigation of the genetic variation of anise (*Pimpinella anisum* L.) using RAPD and ISSR markers. *Genet. Resour. Crop. Evol.* **2019**, *67*, 763–780. [[CrossRef](#)]
- Nurcahyanti, A.D.R.; Nasser, I.J.; Sporer, F.; Graf, J.; Bermawie, N.; Reichling, J.; Wink, M. Chemical Composition of the Essential Oil from Aerial Parts of Javanian *Pimpinella pruatjan* Mol. and Its Molecular Phylogeny. *Diversity* **2016**, *8*, 15. [[CrossRef](#)]
- Tabanca, N.; Douglas, A.W.; Bedir, E.; Dayan, F.E.; Kirimer, N.; Baser, K.H.C.; Aytac, Z.; Khan, I.A.; Scheffler, B.E. Patterns of essential oil relationships in *Pimpinella* (Umbelliferae) based on phylogenetic relationships using nuclear and chloroplast sequences. *Plant Genet. Resour.* **2005**, *3*, 149–169. [[CrossRef](#)]
- Spalik, K.; Downie, S.R. Intercontinental disjunctions in *Cryptotaenia* (Apiaceae, Oenantheae): An appraisal using molecular data. *J. Biogeogr.* **2007**, *34*, 2039–2054. [[CrossRef](#)]
- Wang, Z.X.; Downie, S.R.; Tan, J.B.; Liao, C.Y.; Yu, Y.; He, X.J. Molecular phylogenetics of *Pimpinella* and allied genera (Apiaceae), with emphasis on Chinese native species, inferred from nrDNA ITS and cpDNA intron sequence data. *Nord. J. Bot.* **2014**, *32*, 642–657. [[CrossRef](#)]
- Deschamps, S.; Llaca, V.; May, G.D. Genotyping-by-Sequencing in Plants. *Biology* **2012**, *1*, 460–483. [[CrossRef](#)]
- Jo, J.; Purushotham, P.M.; Han, K.; Lee, H.-R.; Nah, G.; Kang, B.-C. Development of a Genetic Map for Onion (*Allium cepa* L.) Using Reference-Free Genotyping-by-Sequencing and SNP Assays. *Front. Plant Sci.* **2017**, *8*, 1606. [[CrossRef](#)] [[PubMed](#)]
- Lee, J.-H.; Natarajan, S.; Biswas, M.K.; Shirasawa, K.; Isobe, S.; Kim, H.-T.; Park, J.-I.; Seong, C.-N.; Nou, I.-S. SNP discovery of Korean short day onion inbred lines using double digest restriction site-associated DNA sequencing. *PLoS ONE* **2018**, *13*, e0201229. [[CrossRef](#)] [[PubMed](#)]
- Zhang, Q.; Liu, C.; Liu, Y.; VanBuren, R.; Yao, X.; Zhong, C.; Huang, H. High-density interspecific genetic maps of kiwifruit and the identification of sex-specific markers. *DNA Res.* **2015**, *22*, 367–375. [[CrossRef](#)]
- Alipour, H.; Bihamta, M.R.; Mohammadi, V.; Peyghambari, S.A.; Bai, G.; Zhang, G. Genotyping-by-Sequencing (GBS) Revealed Molecular Genetic Diversity of Iranian Wheat Landraces and Cultivars. *Front. Plant Sci.* **2017**, *8*, 1293. [[CrossRef](#)]
- Julio, H.-E.; Vikram, P.; Singh, R.P.; Kilian, A.; Carling, J.; Song, J.; Burgueno-Ferreira, J.A.; Bhavani, S.; Huerta-Espino, J.; Payne, T.; et al. A high density GBS map of bread wheat and its application for dissecting complex disease resistance traits. *BMC Genom.* **2015**, *16*, 1–15. [[CrossRef](#)]
- Jaganathan, D.; Thudi, M.; Kale, S.; Azam, S.; Roorkiwal, M.; Gaur, P.M.; Kishor, P.K.; Nguyen, H.; Sutton, T.; Varshney, R.K. Genotyping-by-sequencing based intra-specific genetic map refines a “QTL-hotspot” region for drought tolerance in chickpea. *Mol. Genet. Genom.* **2015**, *290*, 559–571. [[CrossRef](#)] [[PubMed](#)]
- Iquiera, E.; Humira, S.; François, B. Association mapping of QTLs for sclerotinia stem rot resistance in a collection of soybean plant introductions using a genotyping by sequencing (GBS) approach. *BMC Plant Biol.* **2015**, *15*, 5–12. [[CrossRef](#)]
- Arbizu, C.I.; Ellison, S.L.; Senalik, D.; Simon, P.W.; Spooner, D.M. Genotyping-by-sequencing provides the discriminating power to investigate the subspecies of *Daucus carota* (Apiaceae). *BMC Evol. Biol.* **2016**, *16*, 234. [[CrossRef](#)]

25. Davik, J.; Sargent, D.J.; Brurberg, M.B.; Lien, S.; Kent, M.; Alsheikh, M. A ddRAD Based Linkage Map of the Cultivated Strawberry, *Fragaria xananassa*. *PLoS ONE* **2015**, *10*, e0137746. [[CrossRef](#)] [[PubMed](#)]
26. Peterson, B.K.; Weber, J.N.; Kay, E.H.; Fisher, H.S.; Hoekstra, H.E. Double digest RAD seq: An inexpensive method for de novo SNP discovery and genotyping in model and non-model species. *PLoS ONE* **2012**, *7*, e37135. [[CrossRef](#)]
27. Hojati, M.; Modarres-Sanavy, S.A.M.; Karimi, M.; Ghanati, F. Responses of growth and antioxidant systems in *Carthamus tinctorius* L. under water deficit stress. *Acta Physiol. Plant.* **2011**, *33*, 105–112. [[CrossRef](#)]
28. Severn-Ellis, A.A.; Scheben, A.; Neik, T.X.; Saad, N.S.M.; Pradhan, A.; Batley, J. *Genotyping for Species Identification and Diversity Assessment Using Double-Digest Restriction Site-Associated DNA Sequencing (ddRAD-Seq)*, *Legume Genomics*; Springer: Berlin/Heidelberg, Germany, 2020; pp. 159–187.
29. Catchen, J.M.; Amores, A.; Hohenlohe, P.; Cresko, W.; Postlethwait, J.H. Stacks: Building and Genotyping Loci De Novo From Short-Read Sequences. *G3 Genes Genomes Genet.* **2011**, *1*, 171–182. [[CrossRef](#)]
30. Andrews, S. A Quality Control Tool for High Throughput Sequencing Data. Available online: <http://www.bioinformatics.babraham.ac.uk/projects/fastqc> (accessed on 16 May 2010).
31. Ewels, P.; Magnusson, M.; Lundin, S.; Käller, M. MultiQC: Summarize analysis results for multiple tools and samples in a single report. *Bioinformatics* **2016**, *32*, 3047–3048. [[CrossRef](#)]
32. Bolger, A.M.; Lohse, M.; Usadel, B. Trimmomatic: A flexible trimmer for Illumina sequence data. *Bioinformatics* **2014**, *30*, 2114–2120. [[CrossRef](#)]
33. Danecek, P.; Auton, A.; Abecasis, G.; Albers, C.A.; Banks, E.; DePristo, M.A.; Handsaker, R.E.; Lunter, G.; Marth, G.T.; Sherry, S.T.; et al. The variant call format and VCFtools. *Bioinformatics* **2011**, *27*, 2156–2158. [[CrossRef](#)]
34. Stamatakis, A. RAxML version 8: A tool for phylogenetic analysis and post-analysis of large phylogenies. *Bioinformatics* **2014**, *30*, 1312–1313. [[CrossRef](#)] [[PubMed](#)]
35. Zheng, X.; Levine, D.; Shen, J.; Gogarten, S.M.; Laurie, C.; Weir, B.S. A high-performance computing toolset for relatedness and principal component analysis of SNP data. *Bioinformatics* **2012**, *28*, 3326–3328. [[CrossRef](#)]
36. Cantalapiedra, C.P.; Hernández-Plaza, A.; Letunic, I.; Bork, P.; Huerta-Cepas, J. eggNOG-mapper v2: Functional Annotation, Orthology Assignments, and Domain Prediction at the Metagenomic Scale. *bioRxiv* **2021**, in press.
37. Ogata, H.; Goto, S.; Sato, K.; Fujibuchi, W.; Bono, H.; Kanehisa, M. KEGG: Kyoto Encyclopedia of Genes and Genomes. *Nucleic Acids Res.* **2000**, *27*, 29–34. [[CrossRef](#)] [[PubMed](#)]
38. Ashburner, M.; Ball, C.A.; Blake, J.A.; Botstein, D.; Butler, H.; Cherry, J.M.; Davis, A.P.; Dolinski, K.; Dwight, S.S.; Eppig, J.T. Gene ontology: Tool for the unification of biology. *Nat. Genet.* **2000**, *25*, 25–29. [[CrossRef](#)]
39. Han, J.; Thamilarasan, S.K.; Natarajan, S.; Park, J.-I.; Chung, M.-Y.; Nou, I.-S. De Novo Assembly and Transcriptome Analysis of Bulb Onion (*Allium cepa* L.) during Cold Acclimation Using Contrasting Genotypes. *PLoS ONE* **2016**, *11*, e0161987. [[CrossRef](#)]
40. Novaes, E.; Drost, D.R.; Farmerie, W.G.; Pappas, G.J.; Grattapaglia, D.; Sederoff, R.R.; Kirst, M. High-throughput gene and SNP discovery in *Eucalyptus grandis*, an uncharacterized genome. *BMC Genom.* **2008**, *9*, 354. [[CrossRef](#)]
41. Izzatullayeva, V.; Akparov, Z.; Babayeva, S.; Ojaghi, J.; Abbasov, M. Efficiency of using RAPD and ISSR markers in evaluation of genetic diversity in sugar beet. *Turk. J. Boil.* **2014**, *38*, 429–438. [[CrossRef](#)]
42. Tripathi, N.; Saini, N.; Mehto, V.; Kumar, S.; Tiwari, S. Assessment of genetic diversity among *Withania somnifera* collected from central India using RAPD and ISSR analysis. *Med. Aromat. Plant Sci. Biotechnol* **2012**, *6*, 33–39.
43. Marakli, S. Transferability of Barley Retrotransposons (Sukkula and Nikita) to Investigate Genetic Structure of *Pimpinella anisum* L. *Marmara Fen Bilim. Derg.* **2018**, *30*, 217–220. [[CrossRef](#)]
44. Fereidounfar, S.; Ghahremaninejad, F.; Khajehpiri, M. Phylogeny of the Southwest Asian *Pimpinella* and related genera based on nuclear and plastid sequences. *Genet. Mol. Res.* **2016**, *15*, 1–17. [[CrossRef](#)]
45. Taranto, F.; D’Agostino, N.; Greco, B.; Cardi, T.; Tripodi, P. Genome-wide SNP discovery and population structure analysis in pepper (*Capsicum annuum*) using genotyping by sequencing. *BMC Genom.* **2016**, *17*, 943. [[CrossRef](#)]
46. Paris, J.R.; Stevens, J.R.; Catchen, J.M. Lost in parameter space: A road map for stacks. *Methods Ecol. Evol.* **2017**, *8*, 1360–1373. [[CrossRef](#)]
47. Baldwin, S.; Pither-Joyce, M.; Wright, K.; Chen, L.; McCallum, J. Development of robust genomic simple sequence repeat markers for estimation of genetic diversity within and among bulb onion (*Allium cepa* L.) populations. *Mol. Breed.* **2012**, *30*, 1401–1411. [[CrossRef](#)]
48. Duangjit, J.; Bohanec, B.; Chan, A.; Town, C.; Havey, M.J. Transcriptome sequencing to produce SNP-based genetic maps of onion. *Theor. Appl. Genet.* **2013**, *126*, 2093–2101. [[CrossRef](#)] [[PubMed](#)]
49. Maruyama, T.; Fuerst, P. Population Bottlenecks and Nonequilibrium Models in Population Genetics. II. Number of Alleles in a Small Population that was Formed by a Recent Bottleneck. *Genetics* **1985**, *111*, 675–689. [[CrossRef](#)] [[PubMed](#)]
50. Campagna, L.; Gronau, I.; Silveira, L.F.; Siepel, A.; Lovette, I.J. Distinguishing noise from signal in patterns of genomic divergence in a highly polymorphic avian radiation. *Mol. Ecol.* **2015**, *24*, 4238–4251. [[CrossRef](#)] [[PubMed](#)]
51. Ravinet, M.; Westram, A.; Johannesson, K.; Butlin, R.; André, C.; Panova, M. Shared and nonshared genomic divergence in parallel ecotypes of *Littorina saxatilis* at a local scale. *Mol. Ecol.* **2016**, *25*, 287–305. [[CrossRef](#)]
52. Bus, A.; Hecht, J.; Huettel, B.; Reinhardt, R.; Stich, B. High-throughput polymorphism detection and genotyping in *Brassica napus* using next-generation RAD sequencing. *BMC Genom.* **2012**, *13*, 281. [[CrossRef](#)]



53. Natarajan, S.; Kim, H.-T.; Thamilarasan, S.K.; Veerappan, K.; Park, J.-I.; Nou, I.-S. Whole Genome Re-Sequencing and Characterization of Powdery Mildew Disease-Associated Allelic Variation in Melon. *PLoS ONE* **2016**, *11*, e0157524. [[CrossRef](#)] [[PubMed](#)]
54. Shirasawa, K.; Kuwata, C.; Watanabe, M.; Fukami, M.; Hirakawa, H.; Isobe, S. Target Amplicon Sequencing for Genotyping Genome-Wide Single Nucleotide Polymorphisms Identified by Whole-Genome Resequencing in Peanut. *Plant Genome* **2016**, *9*, 9. [[CrossRef](#)] [[PubMed](#)]
55. Huang, L.; Li, Z.; Wu, J.; Xu, Y.; Yang, X.; Fan, L.; Fang, R.; Zhou, X. Analysis of genetic variation and diversity of Rice stripe virus populations through high-throughput sequencing. *Front. Plant Sci.* **2015**, *6*, 176. [[CrossRef](#)]
56. Elshire, R.J.; Glaubitz, J.C.; Sun, Q.; Poland, J.A.; Kawamoto, K.; Buckler, E.S.; Mitchell, S.E. A Robust, Simple Genotyping-by-Sequencing (GBS) Approach for High Diversity Species. *PLoS ONE* **2011**, *6*, e19379. [[CrossRef](#)]
57. Cornuet, J.M.; Luikart, G. Description and Power Analysis of Two Tests for Detecting Recent Population Bottlenecks From Allele Frequency Data. *Genetics* **1996**, *144*, 2001–2014. [[CrossRef](#)] [[PubMed](#)]
58. Prober, S.M.; Brown, A. Conservation of the Grassy White Box Woodlands: Population Genetics and Fragmentation of *Eucalyptus albens*. *Conserv. Biol.* **1994**, *8*, 1003–1013. [[CrossRef](#)]
59. Glémin, S.; Bazin, E.; Charlesworth, D. Impact of mating systems on patterns of sequence polymorphism in flowering plants. In Proceedings of the Royal Society of London. Series B: Biological Sciences, The Royal Society, London, UK, 14 September 2006; pp. 3011–3019.
60. Zhao, K.; Tung, C.-W.; Eizenga, G.C.; Wright, M.; Ali, M.L.; Price, A.H.; Norton, G.J.; Islam, M.R.; Reynolds, A.R.; Mezey, J.G.; et al. Genome-wide association mapping reveals a rich genetic architecture of complex traits in *Oryza sativa*. *Nat. Commun.* **2011**, *2*, 467. [[CrossRef](#)]
61. Rubin, B.E.R.; Ree, R.H.; Moreau, C.S. Inferring Phylogenies from RAD Sequence Data. *PLoS ONE* **2012**, *7*, e33394. [[CrossRef](#)]
62. Eivazi, A.; Naghavi, M.R.; Hajheidari, M.; Pirseyedi, S.; Ghaffari, M.; Mohammadi, S.; Majidi, I.; Salekdeh, G.; Mardi, M. Assessing wheat (*Triticum aestivum* L.) genetic diversity using quality traits, amplified fragment length polymorphisms, simple sequence repeats and proteome analysis. *Ann. Appl. Biol.* **2007**, *152*, 81–91. [[CrossRef](#)]
63. Gupta, P.; Idris, A.; Mantri, S.; Asif, M.H.; Yadav, H.K.; Roy, J.K.; Tuli, R.; Mohanty, C.S.; Sawant, S.V. Discovery and use of single nucleotide polymorphic (SNP) markers in *Jatropha curcas* L. *Mol. Breed.* **2012**, *30*, 1325–1335. [[CrossRef](#)]
64. Lo, M.-T.; Hinds, D.; Tung, D.A.H.J.Y.; Franz, C.; Fan, C.-C.; Wang, Y.; Smeland, O.B.; Schork, C.-C.F.A.; Holland, D.; Kauppi, K.; et al. Genome-wide analyses for personality traits identify six genomic loci and show correlations with psychiatric disorders. *Nat. Genet.* **2017**, *49*, 152–156. [[CrossRef](#)]
65. Valenzuela-Muñoz, V.; Gallardo-Escárate, C. TLR and IMD signaling pathways from *Caligus rogercresseyi* (Crustacea: Copepoda): In silico gene expression and SNPs discovery. *Fish Shellfish. Immunol.* **2014**, *36*, 428–434. [[CrossRef](#)]
66. Khodadadi, M.; Fotokian, M.H.; Miransari, M. Genetic diversity of wheat (*Triticum aestivum* L.) genotypes based on cluster and principal component analyses for breeding strategies. *Aust. J. Crop. Sci.* **2011**, *5*, 17–24.
67. Guan, X.; Nah, G.; Song, Q.; Udall, J.A.; Stelly, D.M.; Chen, Z.J. Transcriptome analysis of extant cotton progenitors revealed tetraploidization and identified genome-specific single nucleotide polymorphism in diploid and allotetraploid cotton. *BMC Res. Notes* **2014**, *7*, 493. [[CrossRef](#)] [[PubMed](#)]
68. Ravelombola, W.; Shi, A.; Weng, Y.; Mou, B.; Motes, D.; Clark, J.; Chen, P.; Srivastava, V.; Qin, J.; Dong, L.; et al. Association analysis of salt tolerance in cowpea (*Vigna unguiculata* (L.) Walp) at germination and seedling stages. *Theor. Appl. Genet.* **2017**, *131*, 79–91. [[CrossRef](#)] [[PubMed](#)]
69. Egea, L.A.; Mérida-García, R.; Kilian, A.; Hernandez, P.; Dorado, G. Assessment of Genetic Diversity and Structure of Large Garlic (*Allium sativum*) Germplasm Bank, by Diversity Arrays Technology “Genotyping-by-Sequencing” Platform (DArTseq). *Front. Genet.* **2017**, *8*, 98. [[CrossRef](#)]