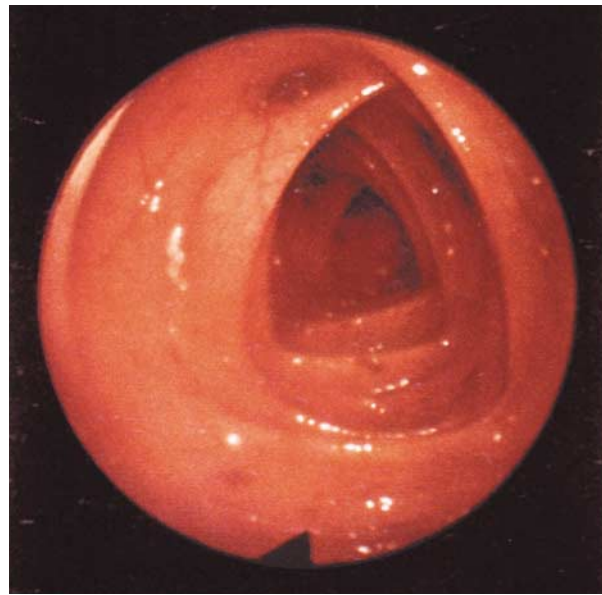




Images in Clinical Medicine



A



B

*The Gaudí-Colon Connection*

Antonio Gaudí, a world-famous architect, was a leader of the artistic movement known as modernism, which is based on the use of natural forms. In 1906, he built La Pedrera, one of his most prominent buildings in Barcelona, Spain. The arcades of the upper floor (Panel A), recently restored and opened to the public, are very similar in form to the haustra of the transverse colon (Panel B) seen on colonoscopy in our daily practice. Colonoscopy was introduced in the 1960s. Was Gaudí a visionary who anticipated, 60 years earlier, the images now shown by modern endoscopy?

TOMÁS PINÓS, M.D.  
*Centro Atención Primaria II Cerdanyola*  
08291 Barcelona, Spain

XAVIER XIOL, PH.D.  
*Hospital Bellvitge*  
08907 Barcelona, Spain

©1998, Massachusetts Medical Society.