

<https://helda.helsinki.fi>

---

## Analysis of weekend effect on mortality by medical specialty in Helsinki University Hospital over a 14-year period

Tolvi, Morag

2020-11

---

Tolvi , M , Mattila , K , Haukka , J , Aaltonen , L-M & Lehtonen , L 2020 , ' Analysis of weekend effect on mortality by medical specialty in Helsinki University Hospital over a 14-year period ' , Health Policy , vol. 124 , no. 11 , pp. 1209-1216 . <https://doi.org/10.1016/j.healthpol.2020.07.010>

---

<http://hdl.handle.net/10138/335331>

<https://doi.org/10.1016/j.healthpol.2020.07.010>

---

cc\_by\_nc\_nd

acceptedVersion

---

*Downloaded from Helda, University of Helsinki institutional repository.*

*This is an electronic reprint of the original article.*

*This reprint may differ from the original in pagination and typographic detail.*

*Please cite the original version.*



Contents lists available at [ScienceDirect](#)

Health Policy

journal homepage: [www.elsevier.com/locate/healthpol](http://www.elsevier.com/locate/healthpol)



## Analysis of weekend effect on mortality by medical specialty in Helsinki University Hospital over a 14-year period

Morag Tolvi<sup>a,\*</sup>, Kimmo Mattila<sup>b</sup>, Jari Haukka<sup>c</sup>, Leena-Maija Aaltonen<sup>a</sup>, Lasse Lehtonen<sup>d</sup>

<sup>a</sup> Department of Otorhinolaryngology – Head and Neck Surgery, University of Helsinki and Helsinki University Hospital, P.O. Box 263, 00029 HUS, Helsinki, Finland

<sup>b</sup> Group Administration, University of Helsinki and Helsinki University Hospital, Helsinki, Finland

<sup>c</sup> Clinicum, Department of Public Health, University of Helsinki, P.O. Box 20, 00014, Helsinki University, Helsinki and Faculty of Medicine and Health Technology, University of Tampere, Tampere, Finland

<sup>d</sup> Diagnostic Center, Helsinki University Hospital and University of Helsinki, P.O. Box 720, 00029 HUS, Helsinki, Finland

### ARTICLE INFO

#### Article history:

Received 13 November 2019  
Received in revised form 16 July 2020  
Accepted 24 July 2020

#### Keywords:

Hospital mortality  
Patient discharge  
Treatment outcome  
Weekend effect  
Quality of healthcare

### ABSTRACT

**Background:** The weekend effect, the phenomenon of patients admitted at the weekend having a higher mortality risk, has been widely investigated and documented in both elective and emergency patients. Research on the issue is scarce in Europe, with the exception of the United Kingdom. We examined the situation in Helsinki University Hospital over a 14-year period from a specialty-specific approach.

**Materials and methods:** We collected the data for all patient visits for 2000–2013, selecting patients with in-hospital care in the university hospital and extracting patients that died during their hospital stay or within 30 days of discharge. These patients were categorized according to urgency of care and specialty. **Results:** A total of 1,542,230 in-patients (853,268 emergency patients) met the study criteria, with 47,122 deaths in-hospital or within 30 days of discharge. Of 12 specialties, we found a statistically significant weekend effect for in-hospital mortality in 7 specialties (emergency admissions) and 4 specialties (elective admissions); for 30-day post-discharge mortality in 1 specialty (emergency admissions) and 2 specialties (elective admissions). Surgery, internal medicine, neurology, and gynecology and obstetrics were most sensitive to the weekend effect.

**Conclusions:** The study confirms a weekend effect for both elective and emergency admissions in most specialties. Reducing the number of weekend elective procedures may be necessary. More disease-specific research is needed to find the diagnoses most susceptible.

© 2020 Elsevier B.V. All rights reserved.

### 1. Introduction

The weekend effect, the phenomenon of patients admitted at the weekend having a higher mortality risk, has been widely investigated [1]. Evidence has been found for [2–10] and against [2,11] disease-specific weekend effects, with conflicting results for stroke [12–15], acute myocardial infarction (AMI) [16–19], and hip fracture [20–22]. In previous studies, systematic reviews and meta-analyses, emergency patients admitted at the weekend suffered higher in-hospital mortality across both medical and surgical diagnoses [23–27], with a larger risk in major teaching hospitals [28,29], with varying specialty-specific [30–36] and

disease-specific [26,37–40] results. Emergency patients that were admitted at the weekend were found to have a 3–10 % higher risk than those admitted during the week [41,42], with those admitted at night on the weekend having a 14 % higher risk for in-hospital death [43]. However, it has been argued that the higher mortality rate at weekends is associated with the smaller share of elective admissions [44] or arrival to the emergency department by ambulance [45]. Others have argued it is due to sicker patients at the weekend [46,47] but these differences in mortality persist even after adjusting for severity of illness [48]. In addition to the weekend effect, other patterns of variation in mortality have been found during the day [49].

The Helsinki and Uusimaa Hospital District consists of 23 hospitals, serving almost one-third of the country's population (1.6 million people). The hospital district provides specialized health care to over half a million individuals annually [50] and the university hospital advanced specialized care to the whole of Finland in certain fields, e.g. cleft lip and palate reconstruction, and organ

\* Corresponding author.

E-mail addresses: [morag.tolvi@hus.fi](mailto:morag.tolvi@hus.fi) (M. Tolvi), [kmattila01@gmail.com](mailto:kmattila01@gmail.com) (K. Mattila), [jari.haukka@helsinki.fi](mailto:jari.haukka@helsinki.fi) (J. Haukka), [leena-maija.aaltonen@hus.fi](mailto:leena-maija.aaltonen@hus.fi) (L.-M. Aaltonen), [lasse.lehtonen@hus.fi](mailto:lasse.lehtonen@hus.fi) (L. Lehtonen).

transplantation, as well as caring for the most complicated cases in all specialties. Our data span a 14-year period with over 28 million patient visits, forming the largest Nordic weekend effect dataset and one of the largest weekend effect datasets in general so far. The weekend effect has been researched extensively in the United Kingdom, the United States and Australia but with only a handful of disease-specific studies in the Nordic countries [19,21,39,51–53]. We set out to investigate the weekend effect on a specialty-specific basis in order to find which specialties have room for improvement and may benefit from procedural and staffing changes. These findings would allow for accurate allocation of funds. From a health policy standpoint, we feel it is also important to address the question of the pros and cons of centralization of healthcare services. This is a burning issue in many countries, including our own.

## 2. Materials and methods

We collected the administrative data of the hospital district for all patients admitted during 2000–2013. We included all available variables in our data into models: age, sex, comorbidities, weekday, month and year of admission and discharge, urgency of admission (emergency or elective), main diagnosis, main specialty, level of care (university or secondary hospital and transfers in between) and date of death. We removed patients with treatment only in secondary hospitals in the hospital district, with missing data in key fields or without in-hospital care. We also excluded day-surgery patients and those patients, who were admitted and discharged on the same day, i.e. day cases and short-term emergency admissions, as the purpose of this study was to examine only patients with in-hospital treatment. Patients, who were admitted to the ward for treatment and died during the same day, were included. Similar criteria have been employed in previous studies [54,55]. Patients, whose treatment began in the university hospital and then concluded in a secondary hospital, in addition to those only treated in the university hospital, were included in this study. The reasoning of including only patients treated in the university hospital was to examine how the centralization of the most difficult cases to the university hospital affected the possibility of a weekend effect. We then extracted patients that died during their hospital stay or within 30 days of discharge. These patients were divided into two categories according to urgency of care: elective and emergency, and into 12 specialties: acute psychiatry, anesthesiology, surgery, neurosurgery, otorhinolaryngology, gynecology and obstetrics, oncology, internal medicine, pulmonology, neurology, geriatrics and pediatrics. Only specialties with 50 or more deaths during the study period were included in the study. The main, most costly specialty was used to classify patients in the study. Those patients with anesthesiology as their specialty were those in the intensive care unit (ICU) at the time of their death or discharge.

The data on 30-day post-discharge mortality is obtained from the Digital and Population Data Services Agency monthly. This data is routinely followed at our hospital as a quality measure together with hospital mortality and it is available separately for each unit discharging patients. As in many hospitals around the world, this indicator includes all deaths irrespective of their cause of death. We do not have access to death certificates, where the cause of death is stated in our country. It is often difficult or impossible to separate related deaths from the unrelated even when one does have this information. For example, readmissions following hip and knee surgery may take place on wards giving conservative treatment, not the Clinic of Orthopedics. The patients may have many kinds of conditions: pulmonary embolisms, other cardiovascular problems, anemia etc. Most of these cases would clearly be related although this would not be evident only by examining the main diagnosis.

The national legislation of Finland does not necessitate ethics committee approval for registry studies involving no patient intervention. Nevertheless, permission was applied for and granted by the hospital district upon review of the study plan.

### 2.1. Outcomes

The outcomes examined in this study comprised death during the hospital stay and all-cause mortality within 30 days of discharge. Mortality was investigated by the day of the week of admission in order to explore whether a weekend effect exists in Helsinki University Hospital. Weekend was defined as starting at midnight Saturday morning and ending at midnight on Sunday night. Reliable time stamps were not available in the data and therefore, only dates were available for analysis.

### 2.2. Statistical analysis

In order to take into account disease severity, we employed the Charlson comorbidity index (CCI) [56,57] and the technique of Ruiz et al. of risk categories [54]. This technique involved the division of the patients in this study into five equal groups based on the crude 30-day mortality rate for each main discharge diagnosis (International Classification of Diseases, ICD-10) involved in this study. We calculated the adjusted odds ratios (OR) with 95 % confidence intervals (CI) using a multivariable logistic regression model including age, sex, weekday, month, year and risk category. R language was used in data analyses (R Core Team. R: A Language and Environment for Statistical Computing, Vienna, Austria: R Foundation for Statistical Computing 2019. <https://www.R-project.org/>). A p-value of less than 0.05 was considered significant.

## 3. Results

### 3.1. Deaths

A total of 1,542,230 in-patients (853,268 emergency in-patients) between 2000 and 2013 were included in the study, with 47,122 deaths in-hospital or within 30 days of discharge (Table 1), for an overall crude mortality rate of 3.1 %. Of these deaths, 37,470 (79.5 %) were associated with emergency patients, for a crude emergency mortality rate of 4.4 % and a crude elective mortality rate of 1.4 %. The majority of deaths occurred in the age group of 70 years of age and older for each specialty, except for acute psychiatry (ages 20–39), oncology (ages 60–69) and pediatrics (ages 0–1).

### 3.2. Weekend admissions

Overall, 16.7 % (n = 258,017) of patients were admitted at the weekend, i.e. Saturday or Sunday. By specialty, weekend admissions comprised 16.7 % of acute psychiatry patients, 14.4 % of surgery patients, 19.3 % of gynecology and obstetrics patients, 17.6 % of internal medicine patients, 18.5 % of pulmonology patients, 16.0 % of neurology patients, 8.6 % of otorhinolaryngology patients, 22.9 % of pediatrics patients, 25.9 % of anesthesiology patients, 19.1 % of neurosurgery patients, 9.0 % of oncology patients and 21.0 % of geriatrics patients.

### 3.3. Emergency admissions

Of emergency admissions, surgery (p = 0.000), gynecology and obstetrics (p = 0.039), internal medicine (p = 0.000), pulmonology (p = 0.002), neurology (p = 0.003), neurosurgery (p = 0.002), and oncology (p = 0.016) had statistically significant weekend effects in in-hospital mortality (Table 2), with internal medicine (p = 0.000)

**Table 1**  
Patient demographics of 1,542,230 in-patients between 2000 and 2013.

|                                       | Acute<br>Psychiatry | Surgery     | Gynecology & Internal<br>Obstetrics<br>Medicine | Pulmonology  | Neurology   |             | Pediatrics                      | Anesthesiology | Neurosurgery | Otorhinolaryngology | Oncology    | Geriatrics |
|---------------------------------------|---------------------|-------------|---|--------------|-------------|-------------|---------------------------------|----------------|--------------|---------------------|-------------|------------|
| Total patients                        | 41286               | 456305      | 293536  | 394866       | 60056       | 77204       | 80936                           | 1345           | 39774        | 47126               | 41876       | 7920       |
| Total deaths                          | 167                 | 9298        | 845   | 20659        | 4855        | 2931        | 455                             | 544            | 1948         | 255                 | 4446        | 719        |
| Crude mortality rate of specialty (%) | 0.40                | 2.04        | 0.29  | 5.23         | 8.08        | 3.80        | 0.56                            | 40.45          | 4.90         | 0.54                | 10.62       | 9.08       |
| Male deaths (% of deaths)             | 98 (58.7)           | 5131 (55.2) | 0 (0)   | 10692 (51.8) | 3002 (61.8) | 1471 (50.2) | 248 (54.5)                      | 367 (80.7)     | 1177 (60.4)  | 166 (65.1)          | 2236 (50.3) | 368 (51.2) |
| Deaths in age group (n)               |                     |             |   |              |             |             |                                 |                |              |                     |             |            |
| <20 years old (% of all deaths)       | 3 (1.8)             | 97 (1.0)    | 1 (0.1)   | 134 (0.6)    | 10 (0.21)   | 20 (0.7)    | <b>0–1 years old</b> 312 (68.6) | 7 (1.3)        | 32 (1.6)     | 4 (1.6)             | 98 (2.2)    | 0 (0)      |
| 20–39 (%)                             | 66 (39.5)           | 176 (1.9)   | 36 (4.3)  | 413 (2.0)    | 59 (1.2)    | 58 (2.0)    | <b>1–2</b> 17 (3.7)             | 29 (5.3)       | 147 (7.5)    | 6 (2.4)             | 214 (4.8)   | 31 (4.3)   |
| 40–49 (%)                             | 37 (22.2)           | 344 (3.7)   | 61 (7.2)  | 885 (4.3)    | 138 (2.8)   | 115 (3.9)   | <b>2–5</b> 38 (8.4)             | 50 (9.2)       | 236 (12.1)   | 15 (5.9)            | 403 (9.1)   | 34 (4.7)   |
| 50–59 (%)                             | 29 (17.4)           | 955 (10.3)  | 166 (19.6)                                      | 2277 (11.0)  | 743 (15.3)  | 329 (11.2)  | <b>5–10</b> 28 (6.2)            | 93 (17.1)      | 390 (20.0)   | 44 (17.3)           | 1034 (23.3) | 97 (13.5)  |
| 60–69 (%)                             | 19 (11.4)           | 1564 (16.8) | 241 (28.5)                                      | 3745 (18.1)  | 1256 (25.9) | 596 (20.3)  | <b>10–15</b> 41 (9.0)           | 125 (23.0)     | 438 (22.5)   | 66 (25.9)           | 1410 (31.7) | 177 (24.6) |
| 70+ (%)                               | 13 (7.8)            | 6162 (66.3) | 340 (40.2)                                      | 13205 (63.9) | 2649 (54.6) | 1813 (61.9) | <b>15–20</b> 16 (3.5)           | 240 (44.1)     | 705 (36.2)   | 120 (47.1)          | 1287 (28.9) | 380 (52.9) |
|                                       |                     |             |   |              |             |             | <b>&gt;20</b> 3 (0.7)           |                |              |                     |             |            |
| Emergency deaths (%)                  | 132 (79.0)          | 6912 (74.3) | 611 (72.3)                                      | 17473 (84.6) | 3998 (82.3) | 2643 (90.2) | 355 (78.0)                      | 276 (50.7)     | 1566 (80.4)  | 162 (63.5)          | 2746 (61.8) | 596 (82.9) |

. Adjusted odds of in-hospital mortality in 853,268 emergency admissions and 688,962 elective admissions.

| Specialty               | Weekday (monday-Friday) | Weekend (Saturday-sunday) |
|-------------------------|-------------------------|---------------------------|
| Acute psychiatry        |                         |                           |
| emergency               | 1.484 (0.569–3.870)     | 1                         |
| elective                | 0.323 (0.066–1.569)     | 1                         |
| Surgery                 |                         |                           |
| emergency               | 0.835 (0.772–0.904)     | 1                         |
| elective                | 0.793 (0.662–0.949)     | 1                         |
| Gynecology & obstetrics |                         |                           |
| emergency               | 0.691 (0.487–0.981)     | 1                         |
| elective                | 0.191 (0.090–0.403)     | 1                         |
| Internal medicine       |                         |                           |
| emergency               | 0.835 (0.797–0.875)     | 1                         |
| elective                | 0.600 (0.522–0.680)     | 1                         |
| Pulmonology             |                         |                           |
| emergency               | 0.850 (0.766–0.944)     | 1                         |
| elective                | 0.730 (0.520–1.024)     | 1                         |
| Neurology               |                         |                           |
| emergency               | 0.847 (0.758–0.946)     | 1                         |
| elective                | 0.433 (0.292–0.641)     | 1                         |
| Otorhinolaryngology     |                         |                           |
| emergency               | 0.632 (0.343–1.165)     | 1                         |
| elective                | 0.478 (0.060–3.790)     | 1                         |
| Pediatrics              |                         |                           |
| emergency               | 0.862 (0.670–1.110)     | 1                         |
| elective                | 0.781 (0.426–1.431)     | 1                         |
| Anesthesiology          |                         |                           |
| emergency               | 1.148 (0.868–1.517)     | 1 <sup>a</sup>            |
| elective                |                         |                           |
| Neurosurgery            |                         |                           |
| emergency               | 0.799 (0.695–0.919)     | 1                         |
| elective                | 0.894 (0.597–1.339)     | 1                         |
| Oncology                |                         |                           |
| emergency               | 0.830 (0.713–0.966)     | 1                         |
| elective                | 0.952 (0.589–1.539)     | 1                         |
| Geriatrics              |                         |                           |
| emergency               | 0.898 (0.696–1.158)     | 1                         |
| elective                | 0.599 (0.342–1.051)     | 1                         |

<sup>a</sup> The number of elective anesthesia patients was insufficient to calculate OR.

reaching statistical significance for 30-day post-discharge mortality during the weekend (Table 3).

### 3.4. Elective admissions

Of elective patients, the highest statistically significant risk for in-hospital mortality was at the weekend for the specialties of surgery ( $p = 0.012$ ), gynecology and obstetrics ( $p = 0.000$ ), internal medicine ( $p = 0.000$ ) and neurology ( $p = 0.000$ ) (Table 2). Thirty-day post-discharge mortality was statistically highest during the weekend for the specialties of gynecology and obstetrics ( $p = 0.006$ ) and neurology ( $p = 0.0047$ ) (Table 3).

### 3.5. Mortality by year

The overall adjusted odds of mortality reached its peak in 2001 and began to decrease starting in 2008, with a steady decline until the end of the study period in 2013 (Fig. 1A). A statistically significant difference in comparison with 2007, however, was only seen in 2001 (significantly higher) and 2008–2013 (significantly lower). The adjusted odds of mortality during the weekend for all in-patients in all specialties overall rose to its highest point in 2002, followed by a slightly cyclic pattern until the end of 2013 (Fig. 1B). During the period from 2008 to 2012, the risk for mortality was lower during the weekend (Saturday and Sunday) when compared

. Adjusted odds of 30-day post-discharge mortality in 853,268 emergency admissions and 688,962 elective admissions.

| Specialty               | Weekday (Monday-Friday) | Weekend (Saturday-sunday) |
|-------------------------|-------------------------|---------------------------|
| Acute psychiatry        |                         |                           |
| emergency               | 1.022 (0.629–1.661)     | 1                         |
| elective                | 4.080e+07 (0.000–Inf)   | 1                         |
| Surgery                 |                         |                           |
| emergency               | 1.011 (0.930–1.100)     | 1                         |
| elective                | 0.948 (0.800–1.124)     | 1                         |
| Gynecology & obstetrics |                         |                           |
| emergency               | 0.981 (0.768–1.254)     | 1                         |
| elective                | 0.457 (0.260–0.801)     | 1                         |
| Internal medicine       |                         |                           |
| emergency               | 0.851 (0.806–0.898)     | 1                         |
| elective                | 0.938 (0.796–1.105)     | 1                         |
| Pulmonology             |                         |                           |
| emergency               | 0.922 (0.818–1.039)     | 1                         |
| elective                | 0.916 (0.638–1.317)     | 1                         |
| Neurology               |                         |                           |
| emergency               | 0.955 (0.824–1.106)     | 1                         |
| elective                | 0.506 (0.315–0.812)     | 1                         |
| Otorhinolaryngology     |                         |                           |
| emergency               | 1.325 (0.805–2.181)     | 1                         |
| elective                | 0.547 (0.195–1.534)     | 1                         |
| Pediatrics              |                         |                           |
| emergency               | 1.025 (0.533–1.970)     | 1                         |
| elective                | 1.547e+07 (0.00–Inf)    | 1                         |
| Anesthesiology          |                         |                           |
| emergency               | 0.936 (0.542–1.617)     | 1 <sup>a</sup>            |
| elective                |                         |                           |
| Neurosurgery            |                         |                           |
| emergency               | 0.883 (0.713–1.094)     | 1                         |
| elective                | 0.934 (0.667–1.310)     | 1                         |
| Oncology                |                         |                           |
| emergency               | 1.109 (0.962–1.278)     | 1                         |
| elective                | 1.448 (0.979–2.143)     | 1                         |
| Geriatrics              |                         |                           |
| emergency               | 0.851 (0.618–1.170)     | 1                         |
| elective                | 0.571 (0.228–1.429)     | 1                         |

<sup>a</sup> The amount of elective anesthesia patients was insufficient to calculate OR.

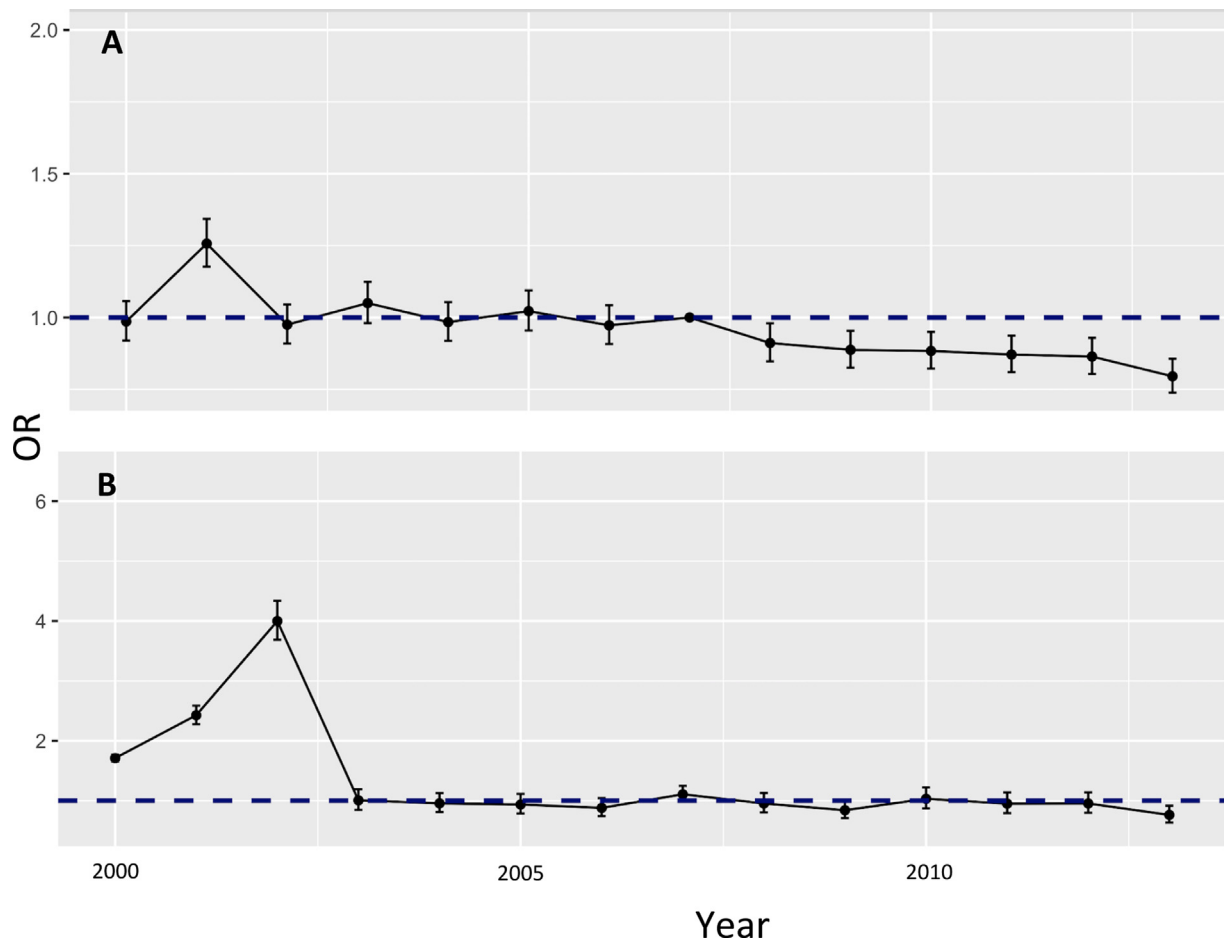
to weekdays (Monday – Friday) for all years except 2010. Nonetheless, only the overall mortality for years 2000–2002 was statistically significantly higher during the weekend, and for the year 2013 significantly lower, than during the week.

### 3.6. Mortality by sex

Of the 11 specialties with both female and male patients, females had a statistically significant lower risk for in-hospital mortality in the specialties of internal medicine (adjusted OR 0.853, 95 % CI 0.821–0.886), acute psychiatry (0.583, 0.367–0.927), surgery (0.778, 0.731–0.827), pulmonology (0.844, 0.787–0.905), neurosurgery (0.821, 0.727–0.928) and geriatrics (0.779, 0.639–0.951) and for 30-day post-discharge mortality in the specialties of internal medicine (0.910, 0.871–0.951), surgery (0.856, 0.806–0.910), acute psychiatry (0.392, 0.287–0.534), neurosurgery (0.668, 0.568–0.786) and pulmonology (0.770, 0.716–0.828).

### 3.7. Mortality by specialty

During the study period, the annual crude mortality rate decreased for acute psychiatry patients from 0.4 % in 2000 to 0.3 % in 2013. A similar decline was also seen for surgery (from 2.4 % in 2000 to 1.7 % in 2013), gynecology and obstetrics (0.30 % in 2000, 0.29 % in 2013), internal medicine (5.7 % in 2000, 4.7 % in



**Fig. 1.** A. The overall adjusted odds ratio (OR) by year from 2000 to 2013. 2007 is the base line (OR = 1). **Fig. 1B.** The overall adjusted odds ratio (OR) for weekday admissions (OR = 1) versus weekend admissions by year.

2013), pulmonology (from 7.4 % in 2000 to 5.8 % in 2013), neurology (3.9 % in 2000, 3.7 % in 2013), neurosurgery (5.7 % in 2000, 3.8 % in 2013) and geriatrics (8.2 % in 2000, 7.2 % in 2009). An increase in crude mortality rate was seen for otorhinolaryngology (0.1 % in 2000, 0.9 % in 2013), pediatrics (0.5 % in 2000, 0.7 % in 2013), anesthesiology (32.0 % in 2006, 44.5 % in 2008) and oncology (7.6 % in 2000, 10.7 % in 2013). For both geriatrics and anesthesiology, data was only available for a portion of the entire study period (geriatrics 2000–2009, anesthesiology 2006–2008) due to changes in designation of specialty.

#### 4. Discussion

The aim of our study was to examine the possibility of a weekend effect in Helsinki University Hospital. We observed a statistically significant higher risk for in-hospital and 30-day post-discharge mortality for most specialties for elective admissions and many specialties for emergency admissions. Surgery, internal medicine, neurology, and gynecology and obstetrics were most sensitive to the weekend effect.

When examining the difference in crude mortality rates of Saturday and Sunday admissions versus Wednesday admissions, we see a total of 3701 more deaths at the weekend potentially attributable to the weekend effect (surgery  $n=725$ , internal medicine  $n=1,906$ , pediatrics  $n=16$ , oncology  $n=209$ , neurosurgery  $n=227$ , anesthesiology  $n=0$ , gynecology and obstetrics  $n=23$ , neurology  $n=385$ , acute psychiatry  $n=3$ , pulmonology  $n=140$ , otorhinolaryngology  $n=26$ , geriatrics  $n=41$ ).

Acute psychiatry, otorhinolaryngology, pediatrics, anesthesiology and geriatrics had no statistically significant weekend effects. This coincides with previous studies on acute psychiatry [58,59], pediatric and geriatric patients [24,60]. Mortality was highest among ICU patients Friday through Monday [61], with a similar pattern in this study but our results did not, however reach statistical significance.

The fluctuation of mortality by year can be explained by several occurrences. At the beginning of 2001, two secondary hospitals were joined to the university hospital. In 2001, the thrombolysis of stroke patients was centralized to the university hospital, and the round-the-clock on-call procedural cardiology service began [62]. In 2002, the hospital board decided to centralize certain rare and difficult treatments to the university hospital. This path was continued in 2003 with the centralization of oncologic surgery, pulmonary surgery and rare procedures (less than 50/year) to the university hospital. 2003 also marked the opening of the new emergency department at the university hospital, the centralization of more difficult emergency patients to the department, as well as a new clinical data processing system [63]. The entire treatment of ST-elevation myocardial infarctions was centralized to the university hospital in April 2005. During 2006, a chain of organizational rearrangement began, with the goal of eliminating redundant and overlapping processes and operations [64]. During the end of 2010 and 2011, the beginning of the renovation of the main university hospital building caused many specialties to be moved around the city [62].

In almost every specialty in both in-hospital and 30-day post-discharge mortality, we see a statistically significant weekend effect in elective patients, which is in line with a recent systematic review and meta-analysis [65]. Weekend admissions numbered one-fifth to one-half of those during the week in all specialties except anesthesiology, where the amount of admissions was fairly similar from one day of the week to the next.

In order to rectify these problems, some have propagated the idea of a seven-day-a-week service. In this regard, promising results have been seen among internal medicine patients with a seven-day hospitalist program [66]. As a means to combat the weekend effect, the National Health Service (NHS) of England has employed four priority clinical standards for emergency hospital care: time to first consultant review, access to diagnostics, access to consultant directed interventions and ongoing consultant review. However, a three-year study found no significant effect of these interventions on the weekend effect [67]. Beginning in 2013, the specialty of emergency medicine was founded in Finland in an attempt to streamline the workings of the emergency department. The effects of emergency physicians are not yet visible in these data as coding for the specialty was not started until 2014.

A recent editorial criticized weekend effect research as not examining the pathways of care leading up to hospital admission, and that this is the more likely cause of the weekend variation in mortality rather than a dip in the quality of care [68]. Nonetheless, in our healthcare system, the pathway to hospital admission is the same weeknights and weekends, and yet, we still saw a weekend effect. This weekend effect was also only significant in certain specialties and no weekend effect was found among intensive care patients, the sickest patients of them all.

We are very well aware that analyses like this, based on administrative data and lacking data on some important potential confounders allow only very cautious conclusions concerning the root causes behind the observations. The majority of elective patients are treated during the week and this decrease of elective admissions during the weekend has been proposed as an explanation for the weekend effect [69]. While some of these patients may be sicker patients admitted on the weekend for monitoring before elective procedures on a Monday, many of these patients are operated on during the weekend in order to shorten waiting times for elective procedures. This is done as extra work on top of a regular 40-h work week. The same applies for on-call shifts during the weekend, which are 24–28 h in length. The specialties, where a weekend effect is seen amongst emergency patients, are some of the more intense, laborious on-call specialties, e.g. internal medicine, gynecology and obstetrics and neurosurgery, where there is less of a chance for rest. Long working hours and lack of sleep are known to increase the risk of accidents and serious medical errors cumulatively, with risk increasing after 8 h and doubling after only 12 h of work [70]. During the weekend, it is quite common for medical students or junior residents to be on call in secondary hospitals. Lack of experience may delay the transfer of these patients to the university hospital, increasing risk of mortality. The specialty of anesthesiology in this study is in practice made up of only intensive care patients. We found no significant weekend effect in any category among these patients, which could speak to the effect of more senior staffing on the weekend effect.

Our organization remained very stable with the same catchment area during the study period. We believe this is often not the case with organizations of this size. Thus, we believe the generalizability of our results is better than in many other studies. They serve as potentially valuable signals of where problems may occur. Other organizations can (and should) explore the state of affairs at their own organization.

Centralization of services does not eliminate the weekend effect in itself, if all the while, attention is not paid to ensuring expertise of uniform quality at the unit where patients are referred to at the weekend. Patient processes must be planned in such a way that they are resilient to staff rest periods. Round-the-clock operation of health care always requires sufficient expert resources and excellent planning of treatment processes.

#### 4.1. Strengths of this study

Such a broad study has not been published in the Nordic countries previously. Our study complements past findings and adds an important specialty-specific perspective. The Finnish healthcare system is publicly funded with a small private sector caring for patients at a primary-care level. The vast majority of specialized health care is provided by the public sector. Consequently, all inhabitants receive necessary treatment regardless of financial or insurance status. No private on-call hospitals exist in Finland. As a result, this prevents possible skewing of the patient material due to treatment of healthier patients in private hospitals. Hence, our data set is an excellent representation of the specialized in-hospital treatment provided in the Helsinki metropolitan area. The population of Finland is quite homogenous, with only 7% of the inhabitants of foreign descent [71], providing a rather uniform patient set. Homogeneity eliminates some genetic variability in regard to mortality and, thus, is yet another strength of this study.

#### 4.2. Limitations of this study

There are some limitations to our study. Our patient information was collected from administrative data, which are notoriously sensitive to various problems, e.g. clinical coding errors and missing data. We were also unable to take into account disease severity as we only had access to diagnosis codes. Thus, we were forced to apply the aforementioned risk category technique in order to take into account disease severity in some way. However, a recent Danish study showed a weekend effect even after adjustment for severity of illness [48]. Time stamps for admission were unreliable. Therefore, we were unable to take into account off-hours admissions during the week. For several specialties, the risk of mortality was highest on a Friday or Monday. This may be caused by admissions Friday evenings or early Monday mornings. Weekend staffing begins on Friday at 3:30pm and ends on Monday at 8:00am in our hospital district. Consequently, patients admitted late Friday or early Monday could skew the weekend effect.

### 5. Conclusion

Surgery, internal medicine, neurology, and gynecology and obstetrics were most sensitive to the weekend effect. Disease-specific weekend effects must be examined more closely, especially in these four specialties. By finding the specific diagnoses that would best benefit from increased and senior staffing and by examining diurnal changes in mortality, funds can be allotted more appropriately to improve patient safety and decrease mortality.

Complete elimination of elective admissions at the weekend may overburden staff during the week and prolong wait times for procedures insufferably but the limitation of elective admissions at the weekend may be necessary. The implementation of certain guidelines for weekend elective admissions, e.g. in the spirit of day surgery criteria, could decrease risk for hospital mortality among these patients. Further studies are needed to clarify this important topic.

## Funding

This work was funded by Finnish Governmental Research Grant; The Finnish Medical Association; and The Otologic Research Fund of Finland (grant number 20170031).

## Declaration of Competing Interest

None.

## Acknowledgements

We would like to thank Dr. Seppo Ranta and Tuuli Pajunen for their expert advice in the planning of this study and its database.

## References

- [1] Bray BD, Steventon A. What have we learnt after 15 years of research into the “weekend effect”? *BMJ Quality & Safety* 2017;26:607–10, <http://dx.doi.org/10.1136/bmjqs-2016-005793>.
- [2] Crowley RW, Yeoh HK, Stukenborg GJ, Medel R, Kassell NF, Dumont AS. Influence of weekend hospital admission on short-term mortality after intracerebral hemorrhage. *Stroke* 2009;40:2387–92, <http://dx.doi.org/10.1161/STROKEAHA.108.546572>.
- [3] Patel AA, Mahajan A, Benjo A, Pathak A, Kar J, Jani VB, et al. A nationwide analysis of outcomes of weekend admissions for intracerebral hemorrhage shows disparities based on hospital teaching status. *The Neurohospitalist* 2016;6:51–8, <http://dx.doi.org/10.1177/1941874415601164>.
- [4] Ananthakrishnan AN, McGinley EL, Saeian K. Outcomes of weekend admissions for upper gastrointestinal hemorrhage: a nationwide analysis. *Clinical Gastroenterology and Hepatology* 2009;7:302, <http://dx.doi.org/10.1016/j.cgh.2008.08.013>, e1.
- [5] Usaro A, Kari A, Ruokonen E. The effects of ICU admission and discharge times on mortality in Finland. *Intensive Care Medicine* 2003;29:2144–8, <http://dx.doi.org/10.1007/s00134-003-2035-1>.
- [6] Bhonagiri D, Pilcher DV, Bailey MJ. Increased mortality associated with after-hours and weekend admission to the intensive care unit: a retrospective analysis. *Medical Journal of Australia* 2011;194:287–92, [https://doi.org/bho10921\\_fm\[pil\]](https://doi.org/bho10921_fm[pil]).
- [7] Aujesky D, Jimenez D, Mor MK, Geng M, Fine MJ, Ibrahim SA. Weekend versus weekday admission and mortality after acute pulmonary embolism. *Circulation* 2009;119:962–8, <http://dx.doi.org/10.1161/CIRCULATIONAHA.108.824292>.
- [8] Shaheen AA, Kaplan GG, Myers RP. Weekend versus weekday admission and mortality from gastrointestinal hemorrhage caused by peptic ulcer disease. *Clinical Gastroenterology and Hepatology* 2009;7:303–10, <http://dx.doi.org/10.1016/j.cgh.2008.08.033>.
- [9] Horwich TB, Hernandez AF, Liang L, Albert NM, Labresh KA, Yancy CW, et al. Weekend hospital admission and discharge for heart failure: association with quality of care and clinical outcomes. *American Heart Journal* 2009;158:451–8.
- [10] Parikh K, Shah M, Mehta D, Arora S, Patel N, Liu D. Increased mortality among patients with acute leukemia admitted on weekends compared to weekdays. *Clinical Lymphoma, Myeloma & Leukemia* 2017;17:e33–43, <http://dx.doi.org/10.1016/j.clml.2017.07.256>.
- [11] Myers RP, Kaplan GG, Shaheen AM. The effect of weekend versus weekday admission on outcomes of esophageal variceal hemorrhage. *Canadian Journal of Gastroenterology* 2009;23:495–501.
- [12] Albright KC, Savitz SI, Raman R, Martin-Schild S, Broderick J, Ernstrom K, et al. Comprehensive stroke centers and the “weekend effect”: the SPOTRIAS experience. *Cerebrovascular Diseases* 2012;34:424–9, <http://dx.doi.org/10.1159/000345077>.
- [13] Inoue T, Fushimi K. Weekend versus weekday admission and in-hospital mortality from ischemic stroke in Japan. *Journal of Stroke & Cerebrovascular Diseases* 2015;24:2787–92, [https://doi.org/S1052-3057\(15\)00440-1](https://doi.org/S1052-3057(15)00440-1).
- [14] Roberts SE, Thorne K, Akbari A, Samuel DG, Williams JG. Mortality following stroke, the weekend effect and related factors: record linkage study. *PLoS One* 2015;10:e0131836, <http://dx.doi.org/10.1371/journal.pone.0131836>.
- [15] Saposnik G, Baibergenova A, Bayer N, Hachinski V. Weekends: a dangerous time for having a stroke? *Stroke* 2007;38:1211–5, <https://doi.org/01.STR.0000259622.78616.ea>.
- [16] Isogai T, Yasunaga H, Matsui H, Tanaka H, Ueda T, Horiguchi H, et al. Effect of weekend admission for acute myocardial infarction on in-hospital mortality: a retrospective cohort study. *International Journal of Cardiology* 2015;179:315–20, <http://dx.doi.org/10.1016/j.ijcard.2014.11.070>.
- [17] Siudak Z, Rakowski T, Dziejewicz A, Skowronek J, Rutka J, Bagiński M, et al. Primary percutaneous coronary intervention during on- vs off-hours in patients with ST-elevation myocardial infarction. Results from EUROTRANSFER Registry. *Kardiologia Polska* 2011;69:1017–22.
- [18] Sorita A, Lennon RJ, Haydour Q, Ahmed A, Bell MR, Rihal CS, et al. Off-hour admission and outcomes for patients with acute myocardial infarction undergoing percutaneous coronary interventions. *American Heart Journal* 2015;169:62–8, <http://dx.doi.org/10.1016/j.ahj.2014.08.012>.
- [19] Hansen KW, Hvelplund A, Abildstrøm SZ, Prescott E, Madsen M, Madsen JK, et al. Prognosis and treatment in patients admitted with acute myocardial infarction on weekends and weekdays from 1997 to 2009. *International Journal of Cardiology* 2013;168:1167–73.
- [20] Thomas CJ, Smith RP, Uzoigwe CE, Braybrooke JR. The weekend effect: short-term mortality following admission with a hip fracture. *Bone Joint Journal* 2014;96-B(3):373–8.
- [21] Kristiansen NS, Kristensen PK, Norgard BM, Mainz J, Johnsen SP. Off-hours admission and quality of hip fracture care: a nationwide cohort study of performance measures and 30-day mortality. *International Journal for Quality in Health Care* 2016;28:324–31.
- [22] Nandra R, Pullan J, Bishop J, Baloch K, Grover L, Porter K. Comparing mortality risk of patients with acute hip fractures admitted to a major trauma centre on a weekday or weekend. *Scientific Reports* 2017;7, <http://dx.doi.org/10.1038/s41598-017-01308-z>, z.
- [23] Ricciardi R, Roberts PL, Read TE, Baxter NN, Marcello PW, Schoetz DJ. Mortality rate after nonelective hospital admission. *Archives of Surgery* 2011;146:545–51, <http://dx.doi.org/10.1001/archsurg.2011.106>.
- [24] Brouns SHA, Wachelder JJ, Jonkers FS, Lamboogj SL, Dieleman JP, Haak HR. Outcome of elderly emergency department patients hospitalised on weekends—a retrospective cohort study. *BMC Emergency Medicine* 2018;18, <http://dx.doi.org/10.1186/s12873-018-0160-y>.
- [25] Marco J, Barba R, Plaza S, Losa JE, Canora J, Zapatero A. Analysis of the mortality of patients admitted to internal medicine wards over the weekend. *American Journal of Medical Quality* 2010;25:312–8, <http://dx.doi.org/10.1177/1062860610366031>.
- [26] Zhou Y, Li W, Herath C, Xia J, Hu B, Song F, et al. Off-hour admission and mortality risk for 28 specific diseases: a systematic review and meta-analysis of 251 cohorts. *Journal of the American Heart Association* 2016;5:e003102, <http://dx.doi.org/10.1161/JAHA.115.003102>.
- [27] Desai V, Gonda D, Ryan SL, Briceño V, Lam SK, Luerssen TG, et al. The effect of weekend and after-hours surgery on morbidity and mortality rates in pediatric neurosurgery patients. *Journal of Neurosurgery: Pediatrics* 2015;16:726–31, <http://dx.doi.org/10.3171/2015.6.PEDS15184>.
- [28] Handel AE, Patel SV, Skingsley A, Bramley K, Sobieski R, Ramagopalan SV. Weekend admissions as an independent predictor of mortality: an analysis of Scottish hospital admissions. *BMJ Open* 2012;2:001789, <http://dx.doi.org/10.1136/bmjopen-2012-001789>. Print 2012.
- [29] Cram P, Hillis SL, Barnett M, Rosenthal GE. Effects of weekend admission and hospital teaching status on in-hospital mortality. *The American Journal of Medicine* 2004;117:151–7, <http://dx.doi.org/10.1016/j.amjmed.2004.02.035>.
- [30] Gould JB, Qin C, Marks AR, Chavez G. Neonatal mortality in weekend vs weekday births. *JAMA* 2003;289:2958, <http://dx.doi.org/10.1001/jama.289.22.2958>.
- [31] Luo Z-C, Liu S, Wilkins R, Kramer MS. Fetal and Infant Health Study Group of the Canadian Perinatal Surveillance System. Risks of stillbirth and early neonatal death by day of week. *CMAJ* 2004;170:337–41.
- [32] Pasupathy D, Wood AM, Pell JP, Fleming M, Smith GCS. Time of birth and risk of neonatal death at term: retrospective cohort study. *BMJ* 2010;341, <http://dx.doi.org/10.1136/bmj.c3498>, c3498–c3498.
- [33] Snowden JM, Darney BG, Cheng YW, McConnell KJ, Caughey AB. Systems factors in obstetric care. *Obstetrics and Gynecology* 2013;122:851–7, <http://dx.doi.org/10.1097/AOG.0b013e3182a2dd93>.
- [34] Snowden JM, Caughey AB. Is there a weekend effect in obstetrics? *BMJ* 2015;h6192, <http://dx.doi.org/10.1136/bmj.h6192>.
- [35] Palmer WL, Bottle A, Aylin P. Association between day of delivery and obstetric outcomes: observational study. *BMJ* 2015;351:h5774, <http://dx.doi.org/10.1136/bmj.h5774>.
- [36] Moaddab A, Clark S, Dildy G, Belfort M, Sangi-Haghpeykar H, Davidson C. Maternal and fetal death on weekends. *American Journal of Perinatology* 2019;36:184–90, <http://dx.doi.org/10.1055/s-0038-1667030>.
- [37] Cortes MB, Fernandes SR, Aranha P, Avô LB, Falcão LM. Association between weekend and holiday admission with pneumonia and mortality in a tertiary center in Portugal: a cross-sectional study. *Acta Medica Portuguesa* 2017;30(5):361–7.
- [38] Gallerani M, Imberti D, Ageno W, Dentali F, Manfredini R. Higher mortality rate in patients hospitalised for acute pulmonary embolism during weekends. *Thrombosis and Haemostasis* 2011;106(1):83–9.
- [39] Helsinki Stroke Thrombolysis Registry Group. Does time of day or physician experience affect outcome of acute ischemic stroke patients treated with thrombolysis? A study from Finland. *International Journal of Stroke* 2012;7:511–6, <http://dx.doi.org/10.1111/j.1747-4949.2012.00795.x>.
- [40] Palmer WL, Bottle A, Davie C, Vincent CA, Aylin P. Dying for the weekend: a retrospective cohort study on the association between day of hospital presentation and the quality and safety of stroke care. *Archives of Neurology* 2012;69:1296–302, <https://doi.org/1212192>.
- [41] Sharp AL, Choi H, Hayward RA. Don't get sick on the weekend: an evaluation of the weekend effect on mortality for patients visiting US EDs. *American Journal of Emergency Medicine* 2013;31:835–7, <http://dx.doi.org/10.1016/j.ajem.2013.01.006>.
- [42] Aylin P, Yunus A, Bottle A, Majeed A, Bell D. Weekend mortality for emergency admissions. A large, multicentre study. *Quality and Safety in Health Care* 2010;19:213–7, <http://dx.doi.org/10.1136/qshc.2008.028639>.
- [43] Han L, Sutton M, Clough S, Warner R, Doran T. Impact of out-of-hours admission on patient mortality: longitudinal analysis in a tertiary acute hospital. *BMJ Quality & Safety* 2018;27, <http://dx.doi.org/10.1136/bmjqs-2017-006784>.



- [44] Williams A, Powell AGMT, Spernaes I, Basu P, Edwards S, Edwards P. Mode of presentation rather than the “weekend effect” is a major determinant of in-hospital mortality. *Surgery* 2019;17:15–8, <http://dx.doi.org/10.1016/j.surge.2018.04.007>.
- [45] Anselmi L, Meacock R, Kristensen SR, Doran T, Sutton M. Arrival by ambulance explains variation in mortality by time of admission: retrospective study of admissions to hospital following emergency department attendance in England. *BMJ Quality & Safety* 2017;26:613–21, <http://dx.doi.org/10.1136/bmjqs-2016-005680>.
- [46] Freemantle N, Ray D, McNulty D, Rosser D, Bennett S, Keogh BE, et al. Increased mortality associated with weekend hospital admission: a case for expanded seven day services? *BMJ* 2015;351:h4596, <http://dx.doi.org/10.1136/bmj.h4596>.
- [47] Freemantle N, Richardson M, Wood J, Ray D, Khosla S, Shahian D, et al. Weekend hospitalization and additional risk of death: an analysis of inpatient data. *Journal of the Royal Society of Medicine* 2012;105:74–84, <http://dx.doi.org/10.1258/jrsm.2012.120009>.
- [48] Duvald I, Moellekaer A, Boysen MA, Vest-Hansen B. Linking the severity of illness and the weekend effect: a cohort study examining emergency department visits Scandinavian. *Journal of Trauma, Resuscitation and Emergency Medicine* 2018;26:72, <http://dx.doi.org/10.1186/s13049-018-0542-x>.
- [49] Bray BD, Cloud GC, James MA, Hemingway H, Paley L, Stewart K, et al. Weekly variation in health-care quality by day and time of admission: a nationwide, registry-based, prospective cohort study of acute stroke care. *Lancet (London, England)* 2016;388:170–7, [http://dx.doi.org/10.1016/S0140-6736\(16\)30443-3](http://dx.doi.org/10.1016/S0140-6736(16)30443-3).
- [50] Helsinki and Uusimaa Hospital District's Annual Report 2017 n.d.; 2018.
- [51] Murray IA, Dalton HR, Stanley AJ, Ngu JH, Maybin B, Eid M, et al. International prospective observational study of upper gastrointestinal haemorrhage: does weekend admission affect outcome? *United European Gastroenterology Journal* 2017;5:1082–9, <http://dx.doi.org/10.1177/2050640617700984>.
- [52] Wiedmann S, Hillmann S, Abilleira S, Dennis M, Hermanek P, Niewada M, et al. Variations in acute hospital stroke care and factors influencing adherence to quality indicators in 6 European audits. *Stroke* 2015;46(2): 579–81.
- [53] Nilsen SM, Toch-Marquardt M, Anthun KS, Johnsen LG, Bjarngaard JH. Time of admission and mortality after hip fracture: a detailed look at the weekend effect in a nationwide study of 55,211 hip fracture patients in Norway. *Acta Orthopaedica* 2018;89:610–4.
- [54] Ruiz M, Bottle A, Aylin PP. The Global Comparators project: international comparison of 30-day in-hospital mortality by day of the week. *BMJ Quality & Safety* 2015;24:492–504, <http://dx.doi.org/10.1136/bmjqs-2014-003467>.
- [55] Bottle A, Middleton S, Kalkman CJ, Livingston EH, Aylin P. Global comparators project: international comparison of hospital outcomes using administrative data. *Health Services Research* 2013;48:2081–100, <http://dx.doi.org/10.1111/1475-6773.12074>.
- [56] Charlson ME, Pompei P, Ales KL, MacKenzie CR. A new method of classifying prognostic comorbidity in longitudinal studies: development and validation. *Journal of Chronic Disease* 1987;40:373–83, [http://dx.doi.org/10.1016/0021-9681\(87\)90171-8](http://dx.doi.org/10.1016/0021-9681(87)90171-8).
- [57] Deyo RA, Cherkin DC, Ciol MA. Adapting a clinical comorbidity index for use with ICD-9-CM administrative databases. *Journal of Clinical Epidemiology* 1992;45:613–9, [http://dx.doi.org/10.1016/0895-4356\(92\)90133-8](http://dx.doi.org/10.1016/0895-4356(92)90133-8).
- [58] Patel R, Chesney E, Cullen AE, Tulloch A, Broadbent M, Stewart R, et al. Clinical outcomes and mortality associated with weekend admission to psychiatric hospital. *British Journal of Psychiatry* 2016;209(1):29–34, <http://dx.doi.org/10.1192/bjp.bp.115.180307>.
- [59] Kapur N, Ibrahim S, Hunt IM, Turnbull P, Shaw J, Appleby L. Mental health services, suicide and 7-day working. *British Journal of Psychiatry* 2016;209:334–9, <http://dx.doi.org/10.1192/bjp.bp.116.184788>.
- [60] Ramsden L, McColgan MP, Rossor T, Greenough A, Clark SJ. Paediatric outcomes and timing of admission. *Archives of Disease in Childhood* 2018;103(6):611–7.
- [61] Barnett MJ, Kaboli PJ, Sirio CA, Rosenthal GE. Day of the week of intensive care admission and patient outcomes: a multisite regional evaluation. *Medical Care* 2002;40:530–9.
- [62] Helsingin ja Uudenmaan sairaanhoitopiiri. HUS vuosikertomus 2011 (Annual Report 2011); 2011.
- [63] Helsingin ja Uudenmaan sairaanhoitopiiri. Vuosikertomus 2003 (Annual Report 2003); 2003.
- [64] Helsingin ja Uudenmaan sairaanhoitopiiri. Vuosikertomus 2006 (Annual Report 2006); 2006.
- [65] Chen Y-F, Armoiry X, Higenbottam C, Cowley N, Basra R, Watson SI, et al. Magnitude and modifiers of the weekend effect in hospital admissions: a systematic review and meta-analysis. *BMJ Open* 2019;9:e025764, <http://dx.doi.org/10.1136/bmjopen-2018-025764>.
- [66] Hsu NC, Huang CC, Shu CC, Yang MC. Implementation of a seven-day hospitalist program to improve the outcomes of the weekend admission: a retrospective beforeafter study in Taiwan. *PLoS One* 2018;13(3):e0194833.
- [67] Meacock R, Sutton M. Elevated mortality among weekend hospital admissions is not associated with adoption of seven day clinical standards. *Emergency Medicine Journal* 2018;35, <http://dx.doi.org/10.1136/emered-2017-206740>.
- [68] Rudge G. The rise and fall of the weekend effect. *Journal of Health Services Research and Policy* 2019;24:217–8, <http://dx.doi.org/10.1177/1355819619869366>.
- [69] Williams A, Powell AGMT, Spernaes I, Basu P, Edwards S, Edwards P. Mode of presentation rather than the “weekend effect” is a major determinant of in-hospital mortality. *Surgeon* 2019;17:15–8, [https://doi.org/10.1016/S1479-666X\(18\)30064-7](https://doi.org/10.1016/S1479-666X(18)30064-7).
- [70] Wagstaff AS, Sigstad Lie J-A. Shift and night work and long working hours – a systematic review of safety implications. *Scandinavian Journal of Work, Environment & Health* 2011;37:173–85, <http://dx.doi.org/10.5271/sjweh.3146>.
- [71] Statistics Finland. Structure of the Finnish population; 2019 <https://www.tilastokeskus.fi/tup/suoluk/suoluk.vaesto.html>.