

# Temperature effects on the temporal dynamics of a subarctic invertebrate community

Sinikka I. Robinson<sup>1</sup>  | Juha Mikola<sup>1</sup>  | Otso Ovaskainen<sup>2,3</sup>  | Eoin J. O'Gorman<sup>4</sup> 

<sup>1</sup>Ecosystems and Environment Research Programme, University of Helsinki, Lahti, Finland

<sup>2</sup>Organismal and Evolutionary Biology Research Programme, University of Helsinki, Helsinki, Finland

<sup>3</sup>Centre for Biodiversity Dynamics, Department of Biology, Norwegian University of Science and Technology, Trondheim, Norway

<sup>4</sup>School of Life Sciences, University of Essex, Colchester, UK

## Correspondence

Eoin J. O'Gorman

Email: e.ogorman@essex.ac.uk

## Funding information

Academy of Finland, Grant/Award Number: 273253, 284601 and 309581; Norges Forskningsråd, Grant/Award Number: 223257; Jane ja Aatos Erkon Säätiö; Suomen Kulttuurirahasto, Grant/Award Number: 00170914, 00180927, 00190900 and 00200930; Royal Society, Grant/Award Number: RG140601; Natural Environment Research Council, Grant/Award Number: NE/L011840/1 and NE/M020843/1; British Ecological Society, Grant/Award Number: 4009-4884, 7283/5350 and SR16/1152

Handling Editor: Natalie Clay

## Abstract

1. Climate warming is predicted to have major impacts on the structure of terrestrial communities, particularly in high latitude ecosystems where growing seasons are short. Higher temperatures may dampen seasonal dynamics in community composition as a consequence of earlier snowmelt, with potentially cascading effects across all levels of biological organisation.
2. Here, we examined changes in community assembly and structure along a natural soil temperature gradient in the Hengill geothermal valley, Iceland, during the summer of 2015. Sample collection over several time points within a season allowed us to assess whether temperature alters temporal variance in terrestrial communities and compositional turnover.
3. We found that seasonal fluctuations in species richness, diversity and evenness were dampened as soil temperature increased, whereas invertebrate biomass varied more. Body mass was found to be a good predictor of species occurrence, with smaller species found at higher soil temperatures and emerging earlier in the season.
4. Our results provide more in-depth understanding of the temporal nature of community and population-level responses to temperature, and indicate that climate warming will likely dampen the seasonal turnover of community structure that is characteristic of high latitude invertebrate communities.

## KEYWORDS

biodiversity, climate change, global warming, HMSC, natural experiment, seasonal dynamics, temporal variability

## 1 | INTRODUCTION

Temperature plays a pivotal role in structuring terrestrial communities, especially in high latitude ecosystems with strong seasonal weather dynamics and short growing seasons. In such areas, seasonal changes in temperature drive temporal fluctuations in primary productivity and species' activity levels, leading to communities with high temporal turnover, compared with those in aseasonal environments (Tonkin et al., 2017). Higher temperatures in early spring may

lead to more rapid development of communities following winter diapause, through earlier emergence, faster growth rates and/or increased activity levels (Forrest, 2016; Høye & Forchhammer, 2008; Koltz et al., 2018; Leingärtner et al., 2014). This may result in communities moving past the transient assembly phase much earlier in the season and exhibiting more stable diversity and biomass throughout the summer. Thus, climate warming may alter the dynamics of arthropod communities through key early season impacts, with potentially cascading effects across all levels of biological organisation. At

This is an open access article under the terms of the Creative Commons Attribution License, which permits use, distribution and reproduction in any medium, provided the original work is properly cited.

© 2021 The Authors. *Journal of Animal Ecology* published by John Wiley & Sons Ltd on behalf of British Ecological Society

high latitudes, warming occurs at a faster rate than the global average (Overland et al., 2020), so population and community dynamics require dedicated monitoring to understand and mitigate the consequences of climate change.

Climate warming may elicit shifts in the rates of spring emergence and dispersal of arthropods as a result of direct effects on the physiology of organisms or indirect effects through earlier snowmelt (Høye & Forchhammer, 2008; Leingärtner et al., 2014). The timing and order in which species appear during the early community assembly phase in spring will in turn affect their competitive ability and abundance throughout their active season (Bokhorst et al., 2016; Clements et al., 2013; Louette & Meester, 2007). In High-Arctic Greenland, for example, abundances of some spider species have declined over the past 18 years in response to rising temperatures and altered timing of snowmelt (Bowden et al., 2018). Since spiders often play an important role as the first predators to emerge or colonise, shifts in their presence, abundance or behaviour are likely to alter community structure during the assembly phase (Dahl et al., 2018). Changes driven by climate warming in the early phases of community assembly might thus dictate the dominance hierarchy of species and determine community composition throughout the active season (Welch & Harwood, 2014).

As global temperatures rise, species with higher thermal optima are favoured over cold-adapted species. There is debate over whether this turnover will manifest in the long term as a reduction in species richness (if species with low thermal optima become locally extinct), an increase in richness (if more species migrate to higher latitudes from warmer climes; Hickling et al., 2006) or maintenance of richness (if cold-adapted species are simply replaced locally by warm-adapted ones; see Hillebrand et al., 2018). Previous research on naturally heated soil systems provides support for the latter, with increasing temperature leading to a decrease in the evenness of epigeal invertebrates, but no change in species richness (Robinson et al., 2018). However, inter-annual variation in community structure may be driven by dominant species rather than diversity. For example, temporal stability in a shortgrass steppe plant community was positively correlated with the relative abundance of dominant species, while diversity was not a strong regulator of stability (Sasaki & Lauenroth, 2011). Similarly, in boreal stream systems, long-term compositional changes are predicted to be high even without changes in richness, suggesting that species replacement might be the main mechanism causing climate-induced changes in macroinvertebrate assemblages (Mustonen et al., 2018). Other studies on stream invertebrate communities support this finding, indicating that species replacement and altered dominance patterns, rather than changes in species richness, underlie warming-induced changes in seasonal community turnover (Jourdan et al., 2017). However, it is uncertain whether seasonal species replacements and turnover in community structure are equally resistant to the potential changes in species richness due to warming.

Geothermal systems have been identified as natural laboratories for studying the impacts of environmental temperature on naturally occurring aquatic and terrestrial communities (O'Gorman et al., 2014; Sigurdsson et al., 2016; Woodward et al., 2010). The

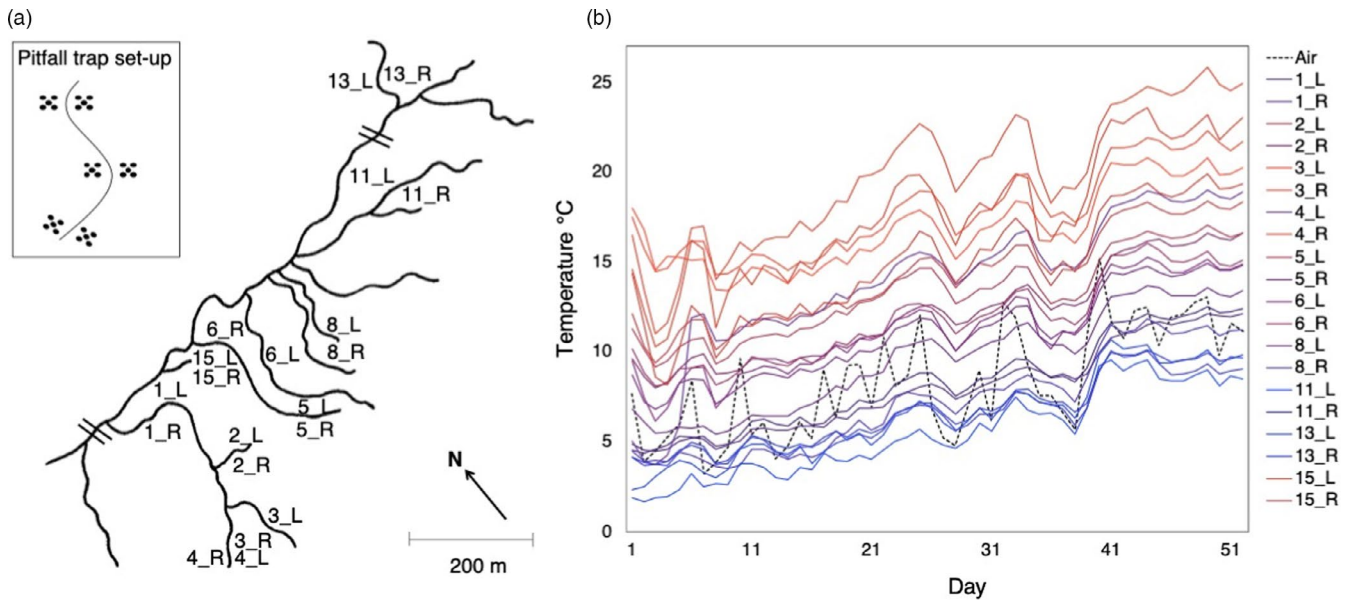
thermal gradients found in these systems help elucidate how multispecies communities respond to temperature change in a heterogeneous landscape, while capturing the complexity of natural ecosystems. Here, we examined how the assembly and early seasonal turnover of invertebrate communities varied along a soil temperature gradient in a geothermal valley in Iceland. Our goal was to determine the extent to which seasonal community turnover is governed by soil temperature, indicating how climate warming will affect seasonal community dynamics in high latitude areas. We analysed spatiotemporal dynamics in community composition as changes in diversity indices (richness, evenness, diversity) and biomass indices (total abundance, mean body mass, total biomass). We hypothesise that (H1) the diversity and biomass of invertebrates will increase with temperature early, though not later in the season (i.e. due to a more rapid progression through the community assembly phase in warmer environments). Consequently, we predict that (H2) the seasonal variability in community structure will decrease with temperature (i.e. due to the longer duration of established communities in warmer environments). If verified, these hypotheses would indicate decreasing seasonal turnover in high latitude invertebrate communities under climate warming.

## 2 | MATERIALS AND METHODS

### 2.1 | Study site and soil temperature

To investigate the effect of temperature on above-ground terrestrial communities, plots bordering 10 streams were selected in the Hengill geothermal valley, Iceland (64.03°N, 21.18°W). Three plots, each separated by approximately 15 m, were randomly designated on the left and right bank of each stream for a total of 60 plots (Figure 1a). Soil temperature was monitored for each plot over the sampling period (13 May 2015–3 July 2015) using Maxim Integrated DS1921G Thermocron iButton temperature loggers. The loggers collected hourly measurements, both day and night, and were buried 5 cm below the soil surface (with one additional logger cable-tied to a wooden stake at 5 cm above the soil surface to monitor air temperature). Daily mean soil temperatures closely tracked the temporal pattern of daily mean air temperatures throughout the 2-month sampling period (Pearson's  $r = 0.70$ – $0.83$ ,  $p < 0.001$  for each plot,  $n = 52$  days; Figure 1b). Data collected during a 2018 field survey also showed that soil temperature at 5 cm below-ground is strongly correlated with surface temperature (Pearson's  $r = 0.96$ ,  $p < 0.001$ ,  $n = 40$  plots), justifying the use of below-ground soil temperatures as a measure of the temperature experienced by epigeal invertebrates.

Due to the differential geothermal heating of the landscape, a natural soil temperature gradient was present across the plots (Figure 1b). Soil temperature was not strongly associated with soil pH (Pearson's  $r = -0.18$ ,  $p = 0.204$ ), percentage soil moisture (Pearson's  $r = -0.02$ ,  $p = 0.870$ ), total carbon (Pearson's  $r = -0.24$ ,  $p = 0.087$ ) or total nitrogen (Pearson's  $r = -0.19$ ,  $p = 0.189$ ). The temperature variation between plots also remained constant throughout the



**FIGURE 1** The distribution and temperature of sampling locations in the Hengill geothermal valley. (a) Location of the 20 stream banks sampled in the study ('=' indicates a greater distance than shown on the map) with the five pitfall traps established in each of three plots at every bank shown in the inset (adapted from Robinson et al., 2018). (b) Daily mean soil (blue–red lines) and air temperature (dashed black line) from 13 May to 3 July 2015. Numbers in the key refer to stream codes used in previous publications on the Hengill system (e.g. Woodward et al., 2010), while 'L' and 'R' refer to the left and right bank of each stream respectively

study (Figure 1b), that is, the plots with the coldest temperatures at the beginning of sampling remained the coldest at the end of sampling (rank correlation of daily mean soil temperatures between dates; Spearman's  $\rho = 0.85$ ,  $p < 0.001$ ). As such, we used mean plot temperatures calculated across the sampling period for all analyses, henceforth referred to simply as plot temperature. Although there are no data on snowmelt at the plot scale in the lead-up to the study, reconnaissance of the field site 1 month prior to sampling indicated that the entire geothermal valley was snow-free, despite widespread snow cover in the surrounding region (Figure S1). This suggests that warm and cold plots were likely to have experienced snowmelt at a similar time and thus are unlikely to be at very different stages of assembly post-snowmelt.

## 2.2 | Sampling regime

The epigeal invertebrate communities were sampled using five pitfall traps left for 48 hr in each plot, at four time-points during the study: 19th May, 4th June, 23rd June and 5th July (Figure 1a). Note that this sampling period captures springtime emergence through to the early summertime community, rather than the full seasonal dynamics of the arthropod community (which spans approximately April to October). All invertebrates were identified to species level where possible, but often to higher taxonomic groups where species-level identification was unfeasible (e.g. Diptera and Hymenoptera were mostly identified to family level). We will refer to all taxa as species from henceforth. The activity density of invertebrate species in each plot (henceforth 'abundance') was estimated as the number

of individuals of a species found in the five pitfall traps; total invertebrate abundance per plot was calculated as the sum of all species abundances. Individual body masses were estimated by measuring the longest linear dimension and converting to dry weight (mg) using length–weight relationships (see table S2 in Robinson et al., 2018). The mean body mass of each species and the abundance-weighted arithmetic mean body mass (henceforth 'body mass') of the invertebrate community were estimated for each plot. The biomass of each species per plot was estimated as their abundance multiplied by their mean body mass; total biomass per plot was the sum of all species' biomasses. Alpha diversity of the invertebrate community at each plot was assessed as Shannon–Weiner diversity ( $H'$ , using the *diversity* function in the *VEGAN* package in R 4.0.2), species richness ( $S$ ) and Pielou's evenness ( $J' = H'/\ln[S]$ ). Seasonal change in these community metrics during the active season was defined as temporal variance, and calculated using the *var* function in R.

## 2.3 | Univariate statistical analyses

Main and interactive effects of temperature (a continuous fixed effect) and sampling time-point (a categorical fixed effect with four levels) on various community metrics of invertebrate diversity and biomass were analysed using univariate linear mixed effect models (LMEM: *lme* function in the *NLME* package) in R. All models included plot nested within bank as a random effect to account for potential pseudoreplication (i.e. three plots on the same stream bank). The main effect of temperature on the temporal variance of community metrics was analysed using LMEM with bank as a random effect.

Assumptions were checked from the residuals for all models, and a transformation of  $\log(x)$  or  $\log(1 - x)$  was used where necessary to meet the assumptions of normality and homogeneity of variance. To ensure our conclusions were robust to the different levels of taxonomic identification employed for different invertebrate groups, all analyses were repeated after considering taxa at the family level.

## 2.4 | Multivariate statistical analyses

We analysed the same data with Hierarchical Modelling of Species Communities (HMSCs; Ovaskainen et al., 2017), a multivariate approach belonging to the class of joint species distribution models (JSDM; Warton et al., 2015). In these analyses, we considered each visit to each plot of each stream bank as a sampling unit, so that there were 240 sampling units in total (i.e. four visits to three plots at 20 stream banks). We included data on species abundance as the response variable in the HMSC analyses (matrix **Y** of sampling units  $\times$  species, including only those species which were present in at least five sampling units). Due to the high proportion of absences, we applied a hurdle model, in which we modelled presence-absence and abundance conditional on presence with two separate models. We modelled presence-absence with a probit regression, and abundance conditional on presence with a linear model, where abundance was log-transformed and scaled for each species to zero mean and unit variance. We included soil temperature (a continuous fixed effect) and sampling time-point (a categorical fixed effect with four levels) as environmental covariates (matrix **X** of sampled locations  $\times$  covariates). Note that we examined three different covariate structures: Model 0, containing no environmental covariates (i.e. an intercept-only model); Model 1, containing only the main effects of the covariates; and Model 2, containing the main effects and their interaction. We included data on log-transformed mean body mass as species traits (matrix **T** of species  $\times$  traits). Finally, we included random effects to account for the structure of the study design (plot nested within bank) and to evaluate residual species-to-species associations at the level of individual visits (sampling time-point).

We fitted all models with the R package Hmisc (Tikhonov et al., 2020). We sampled the posterior distribution with four independent Markov Chain Monte Carlo (MCMC) chains of 375,000 iterations each, out of which we ignored a transient of 125,000 iterations, and thinned the chain by 1,000 to yield 250 posterior samples per chain and hence 1,000 posterior samples in total. We examined if there was support for the effect of temperature on invertebrate occurrences changing during the study period. To do so, we compared Model 0 (which assumes no effect of temperature) with Model 1 (which assumes a uniform effect of temperature) and Model 2 (which assumes a changing effect of temperature through time) in terms of their fit to the data. We compared the models with the Widely Applicable Information Criterion (WAIC) and with twofold cross-validation over the 240 sampling units in terms of area under the curve (AUC). We followed Ovaskainen et al., (2017) and Ovaskainen and Abrego (2020) by partitioning the explained variation for each species among the fixed and random effects included in the model.

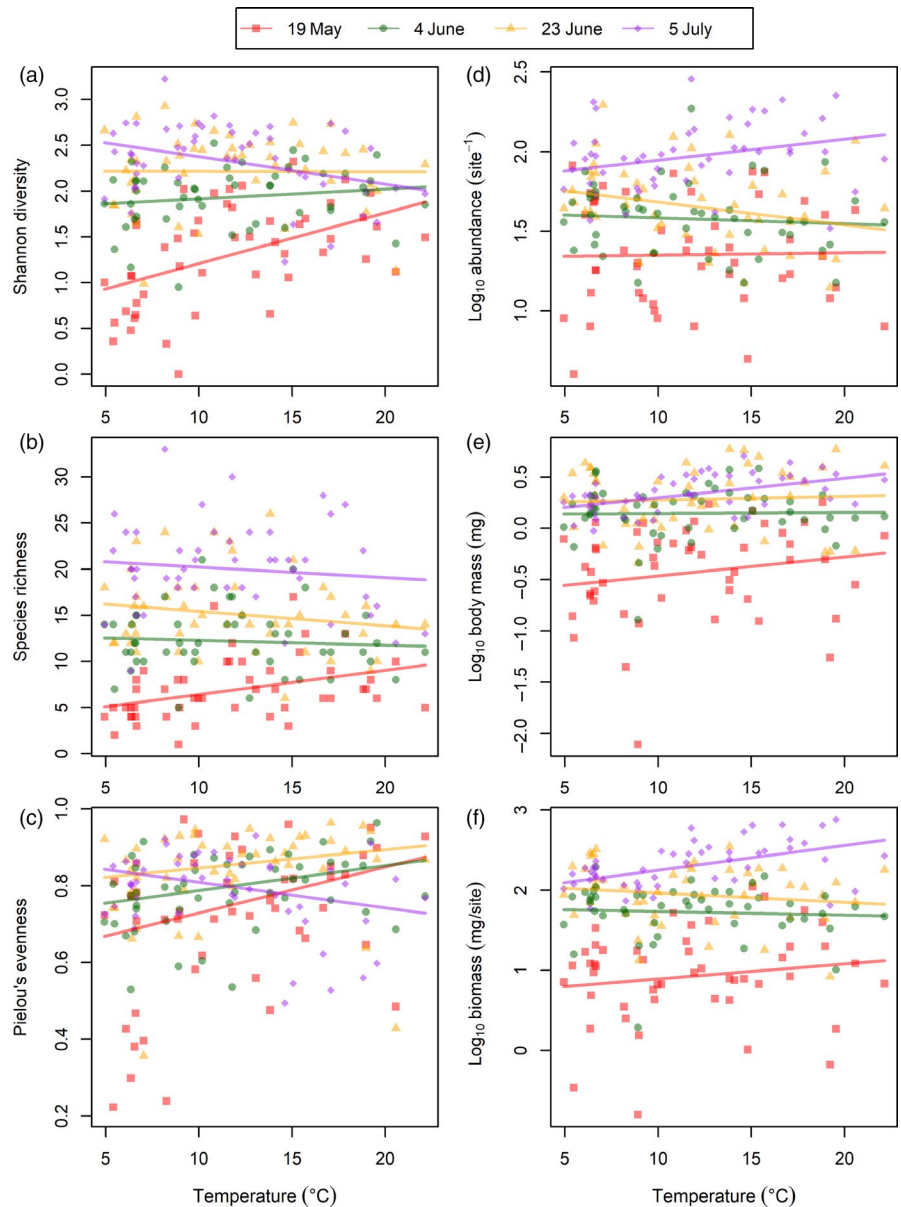
## 3 | RESULTS

For our univariate analyses, the interaction between temperature and time-point was statistically significant for all community metrics apart from body mass (Table 1). The significant interactive effect of temperature and time-point on diversity was explained by warmer plots having higher diversity than colder plots at the first sampling point, but lower diversity at the last sampling point (Figure 2a). This pattern was also reflected in the negative effect of temperature on the temporal variance in diversity (Table 1; Figure 3a), meaning the change in diversity through time was greater in cold plots than in warm ones. We observed a significant interactive effect of temperature and time-point on species richness (Table 1; Figure 2b), which was manifested as a significant negative effect of temperature on temporal variance (Table 1; Figure 3b), thus indicating that warmer plots were more stable in terms of richness throughout the active season. The significant interactive effect of temperature and time-point on evenness was explained by warmer plots having higher evenness than colder plots at the first three sampling time-points, but lower evenness at

**TABLE 1** Main and interactive effects of temperature and sampling time-point on invertebrate community metrics, and main effect of temperature on the temporal variance of community metrics, tested using linear mixed effects models. Note that 'body mass' is the average size of a species in the community, whereas 'biomass' is the total biomass of all species in the community (body mass  $\times$  abundance). *F* and *p* indicate *F*-statistics and *p*-values respectively; *p* < 0.05 shown in bold

	Diversity		Richness		Evenness		Abundance		Body mass		Biomass	
	<i>F</i>	<i>p</i>	<i>F</i>	<i>p</i>	<i>F</i>	<i>p</i>	<i>F</i>	<i>p</i>	<i>F</i>	<i>p</i>	<i>F</i>	<i>p</i>
Community metrics												
Temperature (Temp)	0.842	0.361	0.030	0.863	4.16	<b>0.043</b>	0.018	0.893	1.90	0.171	0.659	0.418
Time-point (Time)	92.1	<b>&lt;0.001</b>	155.4	<b>&lt;0.001</b>	6.68	<b>&lt;0.001</b>	68.1	<b>&lt;0.001</b>	91.3	<b>&lt;0.001</b>	177.6	<b>&lt;0.001</b>
Temp $\times$ Time	12.0	<b>&lt;0.001</b>	4.03	<b>0.009</b>	5.24	<b>0.002</b>	3.00	<b>0.033</b>	1.47	0.225	4.51	<b>0.005</b>
Temporal variance												
Temperature	10.9	<b>0.003</b>	6.95	<b>0.014</b>	1.19	0.284	4.01	0.055	2.85	0.103	9.88	<b>0.004</b>

**FIGURE 2** Responses of invertebrate community metrics to temperature across four sampling time-points (19th May, 4th June, 23rd June and 5th July 2015): (a) diversity; (b) richness; (c) evenness; (d) abundance; (e) body mass; and (f) biomass. Each data point represents a single measurement per plot, per sampling time-point. Solid lines illustrate the predicted fit from significant linear mixed effect models (see Table 1 for full statistical outputs)

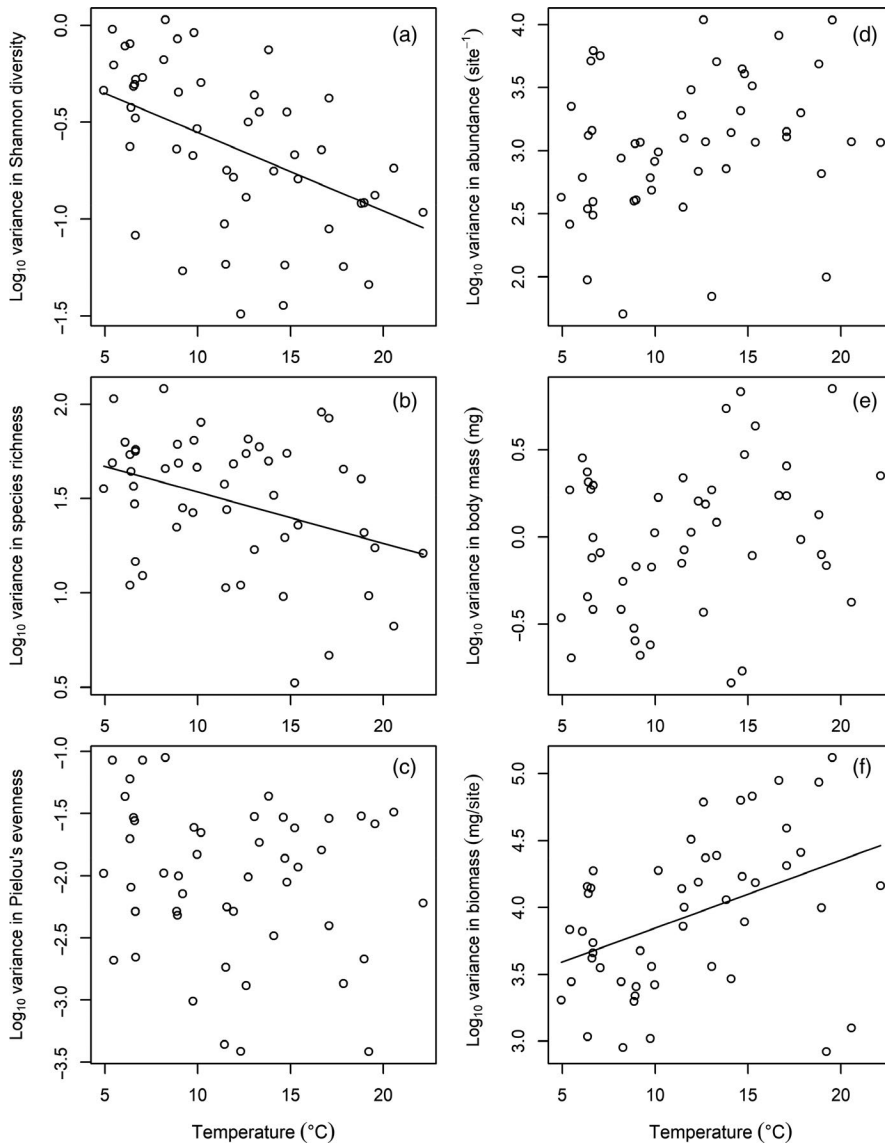


the last sampling point (Figure 2c). However, there was no significant effect of temperature on the temporal variance in evenness (Table 1; Figure 3c).

There was a significant interactive effect of temperature and time-point on total invertebrate abundance, as warmer plots had higher abundance than colder plots at the last time-point only (Table 1; Figure 2d), but temporal variance was not significantly associated with temperature (Table 1; Figure 3d). Body mass showed no significant interactive effect of temperature and time-point, nor any effect of temperature on temporal variance (Table 1; Figure 3e). The significant main effect of time-point on body mass was driven by an increasing average size of invertebrates in the community as the season progressed (Figure 2e; Figure S2e). The significant interactive effect of temperature and time-point on total biomass was as a consequence of warmer plots having higher biomass than colder plots at the first and last sampling points, but not at the two sampling points in between (Table 1; Figure 2f). This pattern was

also manifested as a significant increase in the temporal variance of biomass with increasing temperature (Table 1; Figure 3f). Similar patterns were detected for all univariate analyses considering taxa at the family level (Table S1; Figures S3 and S4).

For the HMSC presence-absence models, WAIC and predictive power values clearly supported the models that included temperature and time-point (i.e. Models 1 and 2) over the intercept-only model (i.e. Model 0; see Table 2). Including the temperature  $\times$  time-point interaction (i.e. Model 2) did not substantially improve model fit, thus we consider the simpler model without interactions (i.e. Model 1) as the more parsimonious one. Variance partitioning over the fixed and random effects showed that most of the variance was attributed to sampling time-point (59%, averaged over species), whereas temperature (18%) and the random effects of plot (9%) and bank (14%) explained smaller proportions of the variance (Figure S5). Concerning the effect of temperature (counting only cases with at least 95% posterior support), 27% of species showed

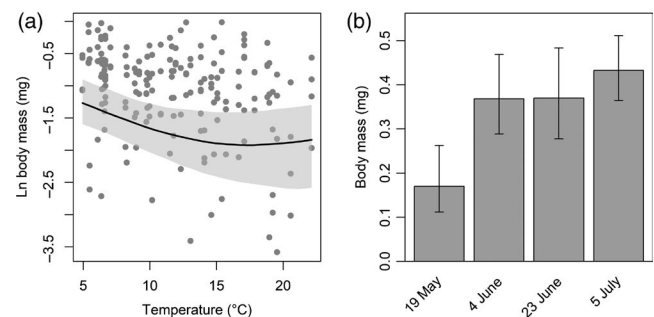


**FIGURE 3** Effects of temperature on the seasonal change (estimated as temporal variance) of invertebrate community metrics during the active season: (a) diversity; (b) richness; (c) evenness; (d) abundance; (e) body mass; and (f) biomass. Each data point represents the variance of the four sampling time-points. Solid lines illustrate the predicted fit from significant linear mixed effect models (see Table 1 for full statistical outputs)

**TABLE 2** Comparison of the presence-absence HMSC models. The models either exclude sampling time-point and temperature (Model 0), include their main effects (Model 1) or include their main and interactive effects (Model 2). Explanatory and predictive powers are measured by AUC, where explanatory power is based on comparing the data to predictions of a model fitted to all data and predictive power is based on twofold cross-validation

	Model 0	Model 1	Model 2
Explanatory power	0.73	0.85	0.85
Predictive power	0.55	0.74	0.73
WAIC	21.53	18.72	18.72

a negative response and only 8% exhibited a positive response (Figure S6). The response of species to temperature depended on their body mass, with larger species dominating cool locations and smaller species dominating warm locations (Figure 4a). Body mass was also related to sampling time-point, with smaller species dominating early in the season (Figure 4b). The HMSC abundance model followed a similar trend, with the model including temperature



**FIGURE 4** Effects of (a) temperature and (b) sampling time-point on invertebrate body mass from HMSC presence-absence Model 1, containing only the main effects of the covariates. The line in (a) and shaded bars in (b) show the posterior median, while the shaded region in (a) and error bars in (b) illustrate 95% credibility intervals

and time-point but not their interaction (i.e. Model 1) as the most parsimonious, albeit with much weaker predictive power than the presence-absence model ( $r^2 = 0.08$ ; Table S2; Figures S7 and S8).

## 4 | DISCUSSION

We hypothesised that diversity and biomass indices would increase with soil temperature during the early stages of community assembly (H1), leading to lower seasonal variation in invertebrate community structure at higher soil temperatures (H2). Our univariate analyses of community metrics suggest that species diversity, richness and evenness were higher in warmer plots during the early stages of community assembly, partially supporting H1. There was no support for H1 among our biomass indices, however, as both abundance and biomass increased with soil temperature late in the season and there were no seasonal effects of temperature on body mass. Diversity and richness underwent greater seasonal turnover in cold plots, in line with H2, whereas total biomass varied more in warmer plots than cold plots, in contrast to H2. Our multivariate HMSC results suggest that body mass is a good predictor of which species will be present at a given temperature and time, with small species dominating early in the season and in warmer plots. These results suggest that climate warming may decrease the seasonal turnover of arthropod communities and amplify seasonal fluctuations in their biomass, with variable species-level responses explained by their body size. While some laboratory experiments have indicated that predator–prey population dynamics may be dampened by warming (Fussmann et al., 2014; Wagner et al., 2013), we are not aware of any other studies that have tested temperature effects on the seasonal dynamics of arthropod communities. Mesocosm experiments and explorations of time-series data (e.g. Koltz et al., 2018; Koltz & Wright, 2020) are now needed to test the generality of these findings for high latitude ecosystems.

During the initial community assembly phase (i.e. the first sampling time-point in mid-May), invertebrate diversity (including both richness and evenness) was higher in warmer plots compared with colder ones, offering partial support for H1 (Figure 2a–c). These findings likely arose from higher soil temperatures in spring promoting earlier snowmelt and enabling invertebrates to colonise or emerge from hibernation or diapause earlier in those plots. For example, an earlier snowmelt treatment in an alpine study led to earlier emergence of arthropods, and an increase in the abundance of predators such as Aranea and Hymenoptera (Leingärtner et al., 2014). There was no effect of temperature on total abundance at the first sampling time-point here, however, indicating that warming instead may structure communities through changes in dominance hierarchies and relative abundances of species, as observed in High-Arctic plants (Kapfer & Grytnes, 2017), flies (Loboda et al., 2018) and spiders (Bowden et al., 2018).

Earlier snowmelt is also likely to advance plant growth, providing invertebrates in warm plots with more resources (Koltz et al., 2018). Some species' responses to increased availability of resources may be greater than to local environmental conditions (Kankaanpää et al., 2018). For example, the response of the ensign scale insect, *Arctorthezia cataphracta*, to a combination of nutrient

addition and warming was stronger than to warming alone in a 4-year study in Norway (Hågvar & Klanderud, 2009). We found that the random effect of plot explained the vast majority of the variance in the presence of *A. cataphracta* (Figure S5), suggesting that an unknown plot characteristic, possibly resource related, may be more important in determining its presence than temperature. Although we are unable to judge the extent to which changes in the composition of our invertebrate community were driven by temperature-mediated effects on vegetation, altered temperature and snow cover regimes can generate transient differences in plant community assembly (Høye et al., 2007; Wipf et al., 2009), leaving legacy effects on the associated invertebrate community. For instance, plant–plant and plant–invertebrate interactions were very strong drivers of invertebrate community changes in response to alterations in snow cover regimes in an alpine study (Lord et al., 2018). These effects may balance out after the initial community assembly phase as the season progresses, however, with a study in Svalbard indicating that the positive effect of increased vegetation cover on spider abundance diminished at later dates (Dahl et al., 2018).

The species inhabiting cold plots in early spring are likely to be those in the regional species pool with lower thermal optima, but could also be those better able to disperse throughout the landscape. For example, the high mobility and plasticity of life-history strategies in the wolf spider *Pardosa palustris* make it less susceptible to changes in temperature regimes compared with other arthropod species (Beckers et al., 2020; Hein et al., 2018, 2019). As such, it might colonise cold patches early in spring to avoid competition by other predators (e.g. *Pirata piraticus*) in warm plots (Robinson et al., 2018). Indeed, we found that *P. piraticus* responded positively to warming, whereas *P. palustris* responded negatively (Figures S6 and S8), indicating that they were colonising disparate habitat patches. Mobile species could therefore be at an advantage in future warmer climates, as they are able to move to potential nano-refugia in heterogeneous environments, but cold-tolerant species might still be lost from the regional species pool if there is not enough habitat heterogeneity to support them (e.g. Alatalo et al., 2017). Soil temperatures in both warm and cold plots in our study closely followed air temperatures throughout the active season, suggesting that cold micro-habitats might disappear in high latitude landscapes under future climate warming.

Abundances were consistently low across the temperature gradient during the first sampling time-point in May (Figure S2d). Previous research indicates that cumulative degree-days better predict arthropod abundance than a combination of date and temperature (Bolduc et al., 2013; Schekkerman et al., 2004), offering a possible explanation for why no clear effects of temperature on abundance or biomass were evident during community assembly (Figure 2). Higher spring temperatures will have a marked effect on species emergence and dispersal (Forrest, 2016), and thus on early season diversity and evenness, but our results indicate that effects on abundance and biomass production will take longer to manifest. Moreover, sampling time-point explained a larger

proportion of the variance in the presence–absence of species than temperature (Figure S5), indicating that cues such as photoperiod may still have an important role to play in moderating the impacts of climate warming on phenology and thus population dynamics (Forrest, 2016).

Examining the seasonal change in diversity showed that warm plots are much more stable across the active period compared with cold plots (though only in terms of Shannon diversity and species richness), partially supporting H2 (Figure 3a,b). Thus, it would appear that warm plots are able to reach their peak productivity earlier than cold plots and maintain a constant species diversity throughout the active season. Further research capturing the entire active season (from the moment of snowmelt to the return of winter snow) is needed to determine whether these dampened seasonal effects at higher soil temperatures were due to faster plant growth and greater dispersal of invertebrates, or earlier snowmelt such that warmer plots were at a more advanced stage of community assembly compared to cold plots. At the peak of the active season (in July), the positive effect of temperature on diversity and evenness that was observed during community assembly became inverted, with diversity and evenness now higher in colder plots (Figure 2a,c). This is supported by our previous findings from Hengill in late summer (August 2012 and July 2013), where both diversity and evenness of invertebrates decreased with increasing temperature (Robinson et al., 2018). This highlights the seasonal context dependency of temperature effects on diversity and the value of temporal replication in sampling regimes to capture the complete story.

It is likely that after the initial community assembly phase, as soil temperature in cold plots increased, more species from the regional species pool were able to colonise these plots. This would suggest that as warm-adapted species are acquired, cold-adapted species are generally not lost from the cold plots. In support of this, we found that many of the taxa in colder plots during community assembly in May (e.g. Entomobryomorpha, Lycosidae, Chironomidae and Linyphiidae) were still present at these plots during the last sampling time-point in July. This indicates that higher temperatures can restructure the community via introduction of new species and changes in relative abundances, rather than through the loss of cold-adapted species or species replacement. This may have a significant impact on ecosystem functioning in the light of climate change, as dominant species, rather than species richness, drive ecosystem service delivery (Winfree et al., 2015).

There was greater seasonal change in biomass in the warmer plots, explained by the positive effect of temperature on biomass at the last sampling point (Figure 2f). This is in line with previous research indicating higher body mass of arthropods in sites with warmer summers (Bolduc et al., 2013), and may be due to the presence of larger species at later sampling times (Figure 4b) and a higher overall abundance in warmer habitats later in the season (Figure 2d). The general decrease in body mass with temperature (Figure 4a) does not contradict the higher community-wide biomass at higher temperatures by the end of the season (Figure 2f), which

results from a numerically higher abundance of the fewer large species present. The positive effect of temperature on total invertebrate abundance at the last sampling point also follows previous findings from Hengill (Robinson et al., 2018) and elsewhere (e.g. Leingärtner et al., 2014; Loboda et al., 2018). Higher primary production as a consequence of increased cumulative temperature may cause an increase in herbivore biomass (e.g. De Sassi et al., 2012) and consequently also attract more predators at warmer sites. Although we did not examine patterns in primary productivity here, we found some support for this hypothesis through an increase in the number of Collembola from the largely herbivorous order Poduromorpha, and a greater number of predatory carabid beetles (e.g. *Pterostichus diligens* and *Pterostichus nigrita*) and wolf spiders (e.g. *Pirata piraticus*) at warmer plots (Figure S8). Moreover, many species which emerge early in the season may extend their period of activity (e.g. aphids; Bell et al., 2015), or increase their voltinism (e.g. High-Arctic wolf spiders; Høye et al., 2020, see Forrest, 2016 for review) as a consequence of warming, which could account for the greater abundances in late summer observed here. Additional generations may not survive, however, if they are unable to reach a cold-tolerant growth stage before unfavourable conditions return in autumn (Van Dyck et al., 2015). Thus, caution should be exercised in extrapolating the observed changes here to inter-annual and wider-scale patterns in invertebrate populations, especially given the large-scale global declines in invertebrate abundance attributed to climate warming (e.g. Gillespie et al., 2020; Hallmann et al., 2017).

There was a greater prevalence of smaller species as soil temperature increased (Figure 4a), supporting previous findings from late summer in the Hengill terrestrial system (Robinson et al., 2018). These findings contribute to widespread empirical support for declines in body size with warming across a multitude of taxa and environments (e.g. Sheridan & Bickford, 2011 and references therein, Bowden et al., 2015; Tseng et al., 2018), rooted in temperature-dependent metabolic processes (Brose et al., 2012). Moreover, with an increase in the length of the active season in warmer plots, multivoltine species may be able to maximise their fitness by maturing earlier at a smaller size (Horne et al., 2015). However, body size responses to temperature are highly inconsistent both within and across taxa (see Gardner et al., 2011; Sheridan & Bickford, 2011 for reviews) owing to the heterogeneity in species thermal requirements. Indeed, there was no overall effect of temperature on the abundance-weighted mean body mass of the invertebrate community here (Figure 2e), due to the fact that larger species (such as the predatory *P. diligens*, *P. nigrita* and *P. piraticus*) were more abundant in warmer plots (Figure S8). The average body mass of the community also increased throughout the season (Figure S2e), with smaller species found during the first time-point in May than on later sampling occasions (Figure 4b). This is consistent with long-term trends from Siberia, where small arthropods emerged earlier than large ones (Tulp & Schekkerman, 2008), and illustrates the importance of body size for early season structuring of high-latitude terrestrial communities.



## 5 | CONCLUSIONS

From our results, we conclude that climate warming will likely dampen the seasonal turnover of community composition that currently characterises high latitude invertebrate communities. However, while increasing temperature dampens seasonal fluctuations in community diversity, it seems to amplify the temporal variability of community biomass. These effects were driven by contrasting temperature–diversity and temperature–biomass relationships over the course of the summer season. This highlights the importance of seasonal context for a more complete understanding of temperature effects on community structure in climate change research. Microclimate conditions vary along the soil surface and within vegetation, especially in polar terrestrial ecosystems (Convey et al., 2018), helping to maintain suitable conditions for species with a wide range of thermal tolerances in the regional species pool. In this context, our results on the effects of spatiotemporal variation in temperature on an invertebrate community have wider significance for understanding the effects of warming on the structure and dynamics of cold climate invertebrate communities.

### ACKNOWLEDGEMENTS

The authors thank Gísli Már Gíslason and Jón S. Ólafsson for providing research support and facilities, Órla McLaughlin for her taxonomic knowledge, Tiancheng Huang for her help in processing the invertebrate samples and Francois Bocheareau for the soil chemistry analyses. They acknowledge the funding support of the Finnish Cultural Foundation (00170914, 00180927, 00190900, 00200930), NERC (NE/L011840/1, NE/M020843/1), the British Ecological Society (4009-4884, 7283/5350, SR16/1152), the Royal Society (RG140601), the Academy of Finland (284601, 273253, 309581), the Research Council of Norway (CoE grant 223257) and the Jane and Aatos Erkkö Foundation.

### AUTHORS' CONTRIBUTIONS

E.J.O.G. and S.I.R. designed the research and collected the data; S.I.R. and O.O. analysed the data; S.I.R. and J.M. led the writing of the manuscript. All the authors contributed to the drafts and gave final approval for publication.

### DATA AVAILABILITY STATEMENT

The data supporting this article are archived with the NERC Environmental Information Data Centre at <https://doi.org/10.5285/e00770f3-4acf-4fd5-ba29-0a4dbdca09a4> (O'Gorman & Robinson, 2021).

### ORCID

Sinikka I. Robinson  <https://orcid.org/0000-0002-8831-0497>

Juha Mikola  <https://orcid.org/0000-0002-4336-2648>

Otso Ovaskainen  <https://orcid.org/0000-0001-9750-4421>

Eoin J. O'Gorman  <https://orcid.org/0000-0003-4507-5690>

### REFERENCES

Alatalo, J. M., Jägerbrand, A. K., Juhanson, J., Michelsen, A., & Luptáčík, P. (2017). Impacts of twenty years of experimental warming on soil

carbon, nitrogen, moisture and soil mites across alpine/subarctic tundra communities. *Scientific Reports*, 7, 44489.

- Beckers, N., Hein, N., Anneser, A., Vanselow, K. A., & Löffler, J. (2020). Differences in mobility and dispersal capacity determine body size clines in two common alpine-tundra arthropods. *Insects*, 1, e74.
- Bell, J. R., Alderson, L., Izera, D., Kruger, T., Parker, S., Pickup, J., Shortall, C. R., Taylor, M. S., Verrier, P., & Harrington, R. (2015). Long-term phenological trends, species accumulation rates, aphid traits and climate: Five decades of change in migrating aphids. *Journal of Animal Ecology*, 84, 21–34.
- Bokhorst, S., Pedersen, S. H., Brucker, L., Anisimov, O., Bjerke, J. W., Brown, R. D., Ehrich, D., Essery, R. L., Heilig, A., Ingvander, S., Johansson, C., Johansson, M., Jónsdóttir, I. S., Inga, N., Luojus, K., Macelloni, G., Mariash, H., McLennan, D., & Rosqvist, G. N. (2016). Changing Arctic snow cover: A review of recent developments and assessment of future needs for observations, modelling, and impacts. *Ambio*, 45, 516–537.
- Bolduc, E., Casajus, N., Legagneux, P., McKinnon, L., Gilchrist, H. G., Leung, M., Morrison, R. G., Reid, D., Smith, P. A., Buddle, C. M., & Bêty, J. (2013). Terrestrial arthropod abundance and phenology in the Canadian Arctic: Modelling resource availability for Arctic-nesting insectivorous birds. *Canadian Entomologist*, 145, 155–170.
- Bowden, J. J., Eskildsen, A., Hansen, R. R., Olsen, K., Kurle, C. M., & Høye, T. T. (2015). High-Arctic butterflies become smaller with rising temperatures. *Biology Letters*, 11, 20150574.
- Bowden, J. J., Hansen, O. L., Olsen, K., Schmidt, N. M., & Høye, T. T. (2018). Drivers of inter-annual variation and long-term change in High-Arctic spider species abundances. *Polar Biology*, 41, 1635–1649.
- Brose, U., Dunne, J. A., Montoya, J. M., Petchey, O. L., Schneider, F. D., & Jacob, U. (2012). Climate change in size-structured ecosystems. *Philosophical Transactions of the Royal Society B: Biological Sciences*, 367, 2903–2912.
- Clements, C. F., Warren, P. H., Collen, B., Blackburn, T., Worsfold, N., & Petchey, O. (2013). Interactions between assembly order and temperature can alter both short- and long-term community composition. *Ecology and Evolution*, 3, 5201–5208.
- Convey, P., Coulson, S. J., Worland, M. R., & Sjöblom, A. (2018). The importance of understanding annual and shorter-term temperature patterns and variation in the surface levels of polar soils for terrestrial biota. *Polar Biology*, 41, 1587–1605.
- Dahl, M. T., Yoccoz, N. G., Aakra, K., & Coulson, S. J. (2018). The Araneae of Svalbard: The relationships between specific environmental factors and spider assemblages in the High Arctic. *Polar Biology*, 41, 839–853.
- De Sassi, C., Lewis, O. T., & Tylianakis, J. M. (2012). Plant-mediated and nonadditive effects of two global change drivers on an insect herbivore community. *Ecology*, 93, 1892–1901.
- Forrest, J. R. (2016). Complex responses of insect phenology to climate change. *Current Opinion in Insect Science*, 17, 49–54.
- Fussmann, K. E., Schwarzmüller, F., Brose, U., Jousset, A., & Rall, B. C. (2014). Ecological stability in response to warming. *Nature Climate Change*, 4, 206–210.
- Gardner, J. L., Peters, A., Kearney, M. R., Joseph, L., & Heinsohn, R. (2011). Declining body size: A third universal response to warming? *Trends in Ecology & Evolution*, 26, 285–291. <https://doi.org/10.1016/j.tree.2011.03.005>
- Gillespie, M. A., Alfredsson, M., Barrio, I. C., Bowden, J. J., Convey, P., Culler, L. E., Coulson, S. J., Krogh, P. H., Koltz, A. M., Koponen, S., Loboda, S., Marusik, Y., Sandström, J. P., Sikes, D. S., & Høye, T. T. (2020). Status and trends of terrestrial arthropod abundance and diversity in the North Atlantic region of the Arctic. *Ambio*, 49, 718–731.
- Hågvar, S., & Klanderud, K. (2009). Effect of simulated environmental change on alpine soil arthropods. *Global Change Biology*, 15, 2972–2980. <https://doi.org/10.1111/j.1365-2486.2009.01926.x>

- Hallmann, C. A., Sorg, M., Jongejans, E., Siepel, H., Hofland, N., Schwan, H., Stenmans, W., Müller, A., Sumser, H., Hörrén, T., Goulson, D., & de Kroon, H. (2017). More than 75 percent decline over 27 years in total flying insect biomass in protected areas. *PLoS ONE*, *12*, e0185809. <https://doi.org/10.1371/journal.pone.0185809>
- Hein, N., Brendel, M. R., Feilhauer, H., Finch, O. D., & Löffler, J. (2018). Egg size versus egg number trade-off in the alpine-tundra wolf spider, *Pardosa palustris* (Araneae: Lycosidae). *Polar Biology*, *41*, 1607–1617.
- Hein, N., Pétilion, J., Pape, R., Feilhauer, H., Vanselow, K. A., & Löffler, J. (2019). Broad-scale rather than fine-scale environmental variation drives body size in a wandering predator (Araneae, Lycosidae). *Arctic, Antarctic, and Alpine Research*, *51*, 315–326.
- Hickling, R., Roy, D. B., Hill, J. K., Fox, R., & Thomas, C. D. (2006). The distributions of a wide range of taxonomic groups are expanding polewards. *Global Change Biology*, *12*, 450–455.
- Hillebrand, H., Blasius, B., Borer, E. T., Chase, J. M., Downing, J. A., Eriksson, B. K., Filstrup, C. T., Harpole, W. S., Hodapp, D., Larsen, S., Lewandowska, A. M., Seabloom, E. W., Van de Waal, D. B., & Ryabov, A. B. (2018). Biodiversity change is uncoupled from species richness trends: Consequences for conservation and monitoring. *Journal of Applied Ecology*, *55*, 169–184.
- Horne, C. R., Hirst, A. G., & Atkinson, D. (2015). Temperature-size responses match latitudinal-size clines in arthropods, revealing critical differences between aquatic and terrestrial species. *Ecology Letters*, *18*, 327–335.
- Høye, T. T., & Forchhammer, M. C. (2008). Phenology of high-arctic arthropods: Effects of climate on spatial, seasonal, and inter-annual variation. *Advances in Ecological Research*, *40*, 299–324.
- Høye, T. T., Kresse, J. C., Koltz, A. M., & Bowden, J. J. (2020). Earlier springs enable High-Arctic wolf spiders to produce a second clutch. *bioRxiv*. 2020.04.30.070029. <https://doi.org/10.1101/2020.04.30.070029>
- Høye, T. T., Post, E., Melfotte, H., Schmidt, N. M., & Forchhammer, M. C. (2007). Rapid advancement of spring in the High Arctic. *Current Biology*, *17*, 449–451.
- Jourdan, J., O'Hara, R. B., Bottarin, R., Huttunen, K. L., Kuemmerlen, M., Monteith, D., Muotka, T., Ozoliņš, D., Paavola, R., Pilotto, F., Springe, G., Skuja, A., Sundermann, A., Tonkin, J. D., & Haase, P. (2017). Effects of changing climate on European stream invertebrate communities: A long-term data analysis. *Science of the Total Environment*, *621*, 588–599.
- Kankaanpää, T., Skov, K., Abrego, N., Lund, M., Schmidt, N. M., & Roslin, T. (2018). Spatiotemporal snowmelt patterns within a high Arctic landscape, with implications for flora and fauna. *Arctic, Antarctic, and Alpine Research*, *50*, e1415624. <https://doi.org/10.1080/15230430.2017.1415624>
- Kapfer, J., & Grytnes, J. A. (2017). Large climate change, large effect? Vegetation changes over the past century in the European High Arctic. *Applied Vegetation Science*, *20*, 204–214.
- Koltz, A. M., Schmidt, N. M., & Høye, T. T. (2018). Differential arthropod responses to warming are altering the structure of Arctic communities. *Royal Society Open Science*, *5*, 171503.
- Koltz, A. M., & Wright, J. P. (2020). Impacts of female body size on cannibalism and juvenile abundance in a dominant arctic spider. *Journal of Animal Ecology*, *89*(8), 1788–1798. <https://doi.org/10.1111/1365-2656.13230>
- Leingärtner, A., Krauss, J., & Steffan-Dewenter, I. N. G. O. L. F. (2014). Elevation and experimental snowmelt manipulation affect emergence phenology and abundance of soil-hibernating arthropods. *Ecological Entomology*, *39*, 412–418.
- Loboda, S., Savage, J., Buddle, C. M., Schmidt, N. M., & Høye, T. T. (2018). Declining diversity and abundance of High Arctic fly assemblages over two decades of rapid climate warming. *Ecography*, *41*, 265–277.
- Lord, J. M., Mark, A. F., Humar-Maegli, T., Halloy, S. R., Bannister, P., Knight, A., & Dickinson, K. J. (2018). Slow community responses but rapid species responses 14 years after alpine turf transplantation among snow cover zones, south-central New Zealand. *Perspectives in Plant Ecology, Evolution and Systematics*, *30*, 51–61.
- Louette, G., & De Meester, L. (2007). Predation and priority effects in experimental zooplankton communities. *Oikos*, *116*, 419–426.
- Mustonen, K. R., Mykrä, H., Marttila, H., Sarremejane, R., Veijalainen, N., Sippel, K., Muotka, T., & Hawkins, C. P. (2018). Thermal and hydrologic responses to climate change predict marked alterations in boreal stream invertebrate assemblages. *Global Change Biology*, *24*, 2434–2446.
- O'Gorman, E. J., Benstead, J. P., Cross, W. F., Friberg, N., Hood, J. M., Johnson, P. W., Sigurdsson, B. D., & Woodward, G. (2014). Climate change and geo-thermal ecosystems: Natural laboratories, sentinel systems, and future refugia. *Global Change Biology*, *20*, 3291–3299.
- O'Gorman, E. J., & Robinson, S. I. (2021). Invertebrate community assembly data across a natural soil temperature gradient in Iceland from May–July 2015. *NERC Environmental Information Data Centre*, <https://doi.org/10.5285/e00770f3-4acf-4fd5-ba29-0a4dbdca09a4>
- Ovaskainen, O., & Abrego, N. (2020). *Joint species distribution modelling: With applications in R*. Cambridge University Press.
- Ovaskainen, O., Tikhonov, G., Norberg, A., Guillaume Blanchet, F., Duan, L., Dunson, D., Roslin, T., & Abrego, N. (2017). How to make more out of community data? A conceptual framework and its implementation as models and software. *Ecology Letters*, *20*, 561–576.
- Overland, J. E., Hanna, E., Hanssen-Bauer, I., Kim, S. J., Walsh, J. E., Wang, M., Bhatt, U. S., & Thoman, R. L. (2020). Surface air temperature. *Arctic Report Card*, 2019, 5–10.
- Robinson, S. I., McLaughlin, Ó. B., Marteinsdóttir, B., & O'Gorman, E. J. (2018). Soil temperature effects on the structure and diversity of plant and invertebrate communities in a natural warming experiment. *Journal of Animal Ecology*, *87*, 634–646.
- Sasaki, T., & Lauenroth, W. K. (2011). Dominant species, rather than diversity, regulates temporal stability of plant communities. *Oecologia*, *166*, 761–768.
- Schekkerman, H., Tulp, I. Y. M., Calf, K. M., & De Leeuw, J. J. (2004). Studies on breeding shorebirds at Medusa Bay, Taimyr, in summer 2002. *Alterra Report*, *922*, 1–108.
- Sheridan, J. A., & Bickford, D. (2011). Shrinking body size as an ecological response to climate change. *Nature Climate Change*, *1*, 401–406.
- Sigurdsson, B. D., Leblans, N., Dauwe, S., Guðmundsdóttir, E., Gundersen, P., Gunnarsdóttir, G. E., Holmström, M., Ilieva-Makulec, K., Kätterer, T., Marteinsdóttir, B., & Maljanen, M. (2016). Geothermal ecosystems as natural climate change experiments: The ForHot research site in Iceland as a case study. *Icelandic Agricultural Sciences*, *29*, 53–71.
- Tikhonov, G., Opedal, Ø. H., Abrego, N., Lehtikoinen, A., de Jonge, M. M., Oksanen, J., & Ovaskainen, O. (2020). Joint species distribution modelling with the R-package Hmsc. *Methods in Ecology and Evolution*, *11*, 442–447.
- Tonkin, J. D., Bogan, M. T., Bonada, N., Rios-Touma, B., & Lytle, D. A. (2017). Seasonality and predictability shape temporal species diversity. *Ecology*, *98*, 1201–1216.
- Tseng, M., Kaur, K. M., Soleimani Pari, S., Sarai, K., Chan, D., Yao, C. H., Porto, P., Toor, A., Toor, H. S., & Fograscher, K. (2018). Decreases in beetle body size linked to climate change and warming temperatures. *Journal of Animal Ecology*, *87*, 647–659.
- Tulp, I., & Schekkerman, H. (2008). Has prey availability for arctic birds advances with climate change? Hindcasting the abundance of tundra arthropods using weather and seasonal variation. *Arctic*, *61*, 48–60.
- Van Dyck, H., Bonte, D., Puls, R., Gotthard, K., & Maes, D. (2015). The lost generation hypothesis: Could climate change drive ectotherms into a developmental trap? *Oikos*, *124*, 54–61. <https://doi.org/10.1111/oik.02066>
- Wagner, A., Huelsmann, S., Horn, W., Schiller, T., Schulze, T., Volkman, S., & Benndorf, J. (2013). Food-web-mediated effects of climate warming: Consequences for the seasonal Daphnia dynamics. *Freshwater Biology*, *58*, 573–587.

- Warton, D., Blanchet, F. G., O'Hara, R. B., Ovaskainen, O., Taskinen, S., Walker, S. C., & Hui, F. K. (2015). So many variables: Joint modelling in community ecology. *Trends in Ecology & Evolution*, *30*, 766–779.
- Welch, K. D., & Harwood, J. D. (2014). Temporal dynamics of natural enemy–pest interactions in a changing environment. *Biological Control*, *75*, 18–27.
- Winfree, R., Fox, J., Williams, N. M., Reilly, J. R., & Cariveau, D. P. (2015). Abundance of common species, not species richness, drives delivery of a real-world ecosystem service. *Ecology Letters*, *18*, 626–635.
- Wipf, S., Stoeckli, V., & Bebi, P. (2009). Winter climate change in alpine tundra: Plant responses to changes in snow depth and snowmelt timing. *Climatic Change*, *94*, 105–121.
- Woodward, G., Dybkjaer, J. B., Olafsson, J. S., Gislason, G. M., Hannesdottir, E. R., & Friberg, N. (2010). Sentinel systems on a razor's

edge: Effects of warming on Arctic geothermal stream ecosystems. *Global Change Biology*, *16*, 1979–1991.

#### SUPPORTING INFORMATION

Additional supporting information may be found online in the Supporting Information section.

**How to cite this article:** Robinson SI, Mikola J, Ovaskainen O, O'Gorman EJ. Temperature effects on the temporal dynamics of a subarctic invertebrate community. *J Anim Ecol.* 2021;90: 1217–1227. <https://doi.org/10.1111/1365-2656.13448>