



WALLER CREEK TUNNEL PROJECT

AUSTIN, TX

CITY OF AUSTIN

July 2012 - September 2015

\$13.1 MILLION

OVERVIEW

The Waller Creek corridor in downtown Austin is part of a 100-year floodplain and, by the project's start date in July 2012, was in need of a comprehensive flood relief plan. The City of Austin awarded Zachry a contract to construct a flood outlet structure that provides immediate storm water relief and reintegrate a vibrant new space into the heart of the Texas Capital.

In addition to providing a cost-effective flood control system for lower Waller Creek, the project reduces flood risk by narrowing the floodplain, enhances water quality, mitigates creek-bed erosion, complements the surrounding cityscape and, ultimately, provides increased economic activity by opening up nearly 28 acres of flood-prone land to development.

In addition to providing a cost-effective flood control system for lower Waller Creek, the project will reduce flood risk by narrowing the floodplain, enhance water quality, mitigate creek-bed erosion, complement the surrounding cityscape and, ultimately, provide increased economic activity by opening up some 28 acres of flood-prone land to development.

The new outlet structure also entails the construction of a cofferdam -a temporary dry work area used during the project) a maintenance access road and an adjacent lagoon measuring 150 feet wide and 50 feet deep.

Zachry seamlessly incorporated all design and aesthetic considerations with virtually no disruption to the overall schedule and budget.

Work on the Waller Creek Tunnel Outlet Facility was completed in September 2015.

Future site restoration plans call for the installation of numerous park amenities, including ADA-compliant trails, wetlands and a scenic overlook. Once complete, the newly envisioned Waller Creek corridor will look like a natural wetland cove fringed by native vegetation.



KEY PROJECT SOLUTIONS

COMPREHENSIVE FLOOD CONTROL PLAN

The project was in need of a comprehensive flood control plan that narrowed the existing floodplain and make more area available for development and recreation.

MANDATED AESTHETICS

Zachry worked with officials to make sure the tunnel and flood control system were seamlessly incorporated into the surrounding areas with no impact on budget or schedule.

ENVIRONMENTAL CONSERVATION

Mitigate creek-bed erosion and preserve existing vegetation along with surrounding areas used for recreation.

CALL FOR SUBCONTRACTORS

Zachry is currently seeking dependable subcontractors to partner with us on this

groundbreaking project.

HEAVY CIVIL

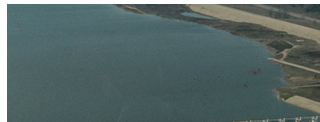
Our progressive approach to innovation and partnership has placed Zachry at the forefront of heavy civil construction firms, leading a diverse range of projects across the country.

RELATED PROJECTS



**SAN ANTONIO
RIVER
IMPROVEMENTS
- MISSION
REACH**

Completed
Project



**EASTSIDE
RESERVOIR**

Completed
Project