

Copper Transporters? Glutathione Reactivity of Products of Cu–A β Digestion by Neprilysin

Ewelina Stefaniak, Dawid Płonka, Paulina Szczerba, Nina E. Wezynfeld, and Wojciech Bal*

Cite This: *Inorg. Chem.* 2020, 59, 4186–4190

Read Online

ACCESS |

Metrics & More

Article Recommendations

Supporting Information

ABSTRACT: A β_{4-42} is the major subspecies of A β peptides characterized by avid Cu(II) binding via the ATCUN/NTS motif. It is thought to be produced *in vivo* proteolytically by neprilysin, but *in vitro* experiments in the presence of Cu(II) ions indicated preferable formation of C-terminally truncated ATCUN/NTS species including Cu^{II}A β_{4-16} , Cu^{II}A β_{4-9} , and also Cu^{II}A β_{12-16} , all with nearly femtomolar affinities at neutral pH. Such small complexes may serve as shuttles for copper clearance from extracellular brain spaces, on condition they could survive intracellular conditions upon crossing biological barriers. In order to ascertain such possibility, we studied the reactions of Cu^{II}A β_{4-16} , Cu^{II}A β_{4-9} , Cu^{II}A β_{12-16} , and Cu^{II}A β_{1-16} with reduced glutathione (GSH) under aerobic and anaerobic conditions using absorption spectroscopy and mass spectrometry. We found Cu^{II}A β_{4-16} and Cu^{II}A β_{4-9} to be strongly resistant to reduction and concomitant formation of Cu(I)–GSH complexes, with reaction times \sim 10 h, while Cu^{II}A β_{12-16} was reduced within minutes and Cu^{II}A β_{1-16} within seconds of incubation. Upon GSH exhaustion by molecular oxygen, the Cu^{II}A β complexes were reformed with no concomitant oxidative damage to peptides. These findings reinforce the concept of A β_{4-x} peptides as physiological trafficking partners of brain copper.

A β peptides are products of extracellular hydrolysis of amyloid precursor protein (APP) present in neuronal synaptic membranes.^{1–3} Overproduction or excessive aggregation of A β has been long implicated as an upstream cause of neuronal death in Alzheimer's disease (AD).^{4,5} This concept gained recent reinforcement when direct deleterious action of A β dimers on neuronal glutamate receptors was demonstrated.⁶ A β peptides are a heterogeneous peptide family, generated by a number of primary (acting on APP) and secondary (acting on A β) proteases. The most studied members of the A β family are A β_{1-40} and A β_{1-42} , but current analytical studies demonstrated a high abundance of the N-truncated A β_{4-42} peptide in both healthy and AD human brains.^{7,8}

A β_{1-x} peptides (x denotes naturally occurring 42 and 40 species, as well as model peptides 28 and 16) bind a Cu^{II} ion avidly with K_d about 100 pM. The resulting complexes can be easily activated by ascorbate to catalyze the production of reactive oxygen species (ROS).^{9–12} Supported by reports on deranged copper metabolism in AD brains and colocalization of copper and aggregated A β peptides in amyloid plaques, these properties gave rise to a concept of Cu^{II}–A β_{1-x} complexes as neurotoxic species in AD.^{5,13,14}

Remarkably, A β_{4-42} and its C-terminally truncated analogs are Cu^{II} chelators much more avid (3000 times at pH 7.4 for A β_{4-16} vs A β_{1-16}) and specific than A β_{1-x} peptides.¹⁵ This results from a specific character of their N-terminal sequence, Phe-Arg-His, belonging to the ATCUN/NTS family.¹⁶ Furthermore, unlike Cu^{II}–A β_{1-x} complexes, Cu^{II}–A β_{4-x} did not generate ROS and could not be reduced electrochemically to Cu^I species.¹⁵ These findings suggest that A β_{4-42} might actually serve as synaptic copper scavenger, helping restore the

resting state of glutamatergic synapse, after the physiological Cu²⁺ release during neurotransmission.^{17,18}

Digestion of A β peptides is considered as one of the major routes of their detoxification. They are thought to be cleaved down to oligopeptides that can cross the blood–brain barrier.^{19,20} An A β -specific peptidase has not been found. Instead, a number of brain proteases with other known functions have been implicated in this process, including neprilysin (NEP), angiotensinogen converting enzyme (ACE), and insulin degrading enzyme (IDE).²¹ NEP action on A β_{1-x} has also been indicated as the main source of A β_{4-x} in the brain.^{22,23} A recent study of A β_{1-16} and A β_{1-40} cleavage by NEP in the presence and absence of Cu^{II} ions did not quite reproduce such activity, however. Instead a significant extent of peptide fragmentation was observed. The fast digestion of the Gly9–Tyr10 bond yielded the Cu^{II}-complexed short peptide A β_{4-9} . Additionally, a complex of A β_{12-16} was generated abundantly when A β_{1-16} was used as a substrate and was also present as a minor species for A β_{1-40} .²⁴ A β_{4-9} and A β_{12-16} are even stronger Cu^{II} chelators than A β_{4-16} , with K_d of 6.6 fM and 9.5 fM vs 30 fM at pH 7.4.²⁵ This finding gave rise to an idea that such complexes might serve as shuttles for removing excess copper from the brain.

Crossing the blood–brain barrier (BBB) is a complicated and not fully elucidated process, involving passage through the

Received: February 11, 2020

Published: March 26, 2020

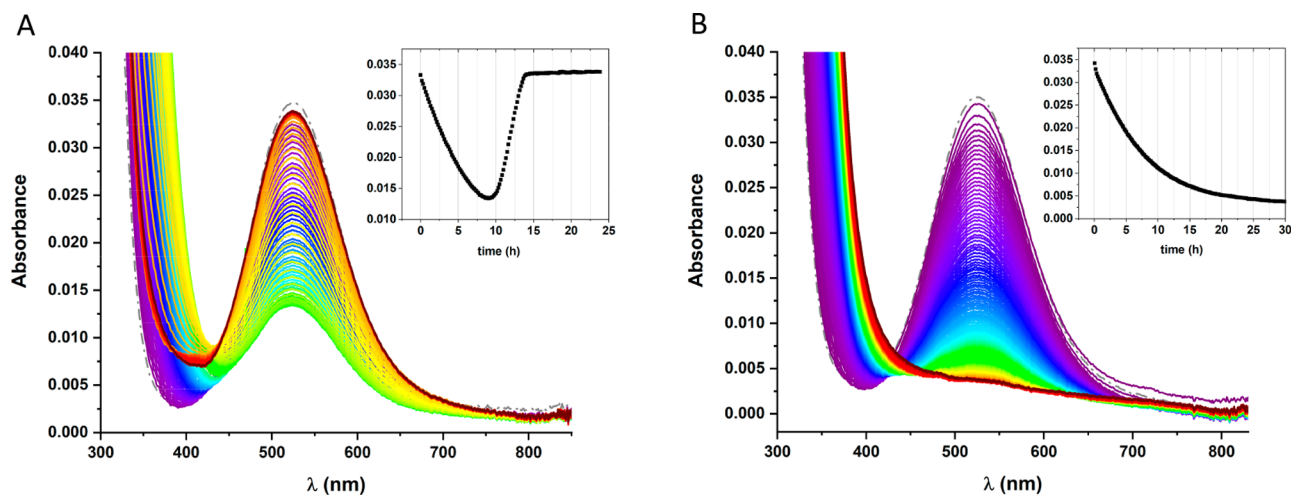


Figure 1. UV-vis spectra of the reaction of 0.315 mM Cu(II) ions with 1.75 mM GSH in the presence of 0.35 mM $A\beta_{4-16}$ in 20 mM ammonium acetate buffer, pH 7.4, carried out for 25–30 h at 25 °C under aerobic (A) and anaerobic (B) conditions. UV-vis spectrum of $Cu(II)A\beta_{4-16}$ showed by dashed line. The spectra were recorded in 10 min intervals. Insets show selected kinetic traces at 525 nm.

Table 1. Initial Reaction Velocities, V_0 , and Conversion Degrees of Cu^{II} Reduction to Cu^I /GSH in the Presence of $A\beta_{4-16}$ Peptide^a

	aerobic			anaerobic
	18 °C	25 °C	37 °C	25 °C
V_0	5.0 ± 0.2	10 ± 1	21 ± 3	9 ± 4
conversion degree	0.58 ± 0.03	0.65 ± 0.04	0.64 ± 0.05	0.92 ± 0.03

^aDetermined from the initial decay of the d–d band at 525 nm. Velocities are given in nM/s; all data are shown \pm SD.

layer of epithelial cells forming the blood vessel walls.²⁶ Therefore, the transferred molecule could be exposed for a certain amount of time to intracellular conditions, including millimolar (0.5–10 mM) concentrations of reduced glutathione (GSH).²⁷ GSH is the main reducing agent for Cu^{II} species entering the cell interior and is also implicated in the intracellular Cu^I transport.^{28–30} It is also present extracellularly in the brain, serving as neuromodulator.³¹ GSH facilitated the otherwise very sluggish reductive copper transfer from $A\beta_{4-16}$ to metallothionein-3 (MT-3), indicating that it could reduce the $A\beta_{4-x}$ -bound $Cu(II)$ to $Cu(I)$ despite the electrochemical resistance of the parent complex to such reaction.³²

We therefore decided to follow the reaction of $A\beta_{4-x}$ peptides with GSH in more detail, using $A\beta_{4-16}$ as a suitable soluble, nonaggregating substitute of $A\beta_{4-42}$. We also tested $A\beta_{4-9}$ and $A\beta_{12-16}$. Our experiments were performed under aerobic (21% O_2) and anaerobic (<1% O_2) conditions in order to gain insight into the relation of the studied reaction to oxidative stress conditions. The differential kinetic resistance of the studied complexes to reduction supports their possible roles in Cu^{II} transport in the brain.

In initial experiments, 0.315 mM Cu^{2+} ions were reacted for 24 h with 1.75 mM GSH in 20 mM ammonium acetate at 25 °C under aerobic conditions, with and without 0.35 mM $A\beta_{4-16}$ (0.9/5/1 and 0.9/5 molar ratios, Figure 1A and Supporting Information Figure S1, respectively). In control experiments 1.75 mM glutathione disulfide (GSSG) was used instead of GSH (Figure S2), and Cu^{2+} ions were omitted from the reaction of GSH with $A\beta_{4-16}$ (Figure S3). These experiments allowed us to identify and assign the spectral changes occurring in the course of reactions of $Cu^{II}(A\beta_{4-16})$ with GSH. New bands in the near-UV range between 315 and 265 nm (Figure S4) appeared gradually in the presence of

$A\beta_{4-16}$, at the expense of the $Cu(II)$ band of the 4N complex at 525 nm. In the absence of the peptide, the same bands emerged rapidly. They could be assigned to the $Cu(I)$ complex of GSH, reported previously by others.^{33,34}

This Cu^{II} reduction phase lasted for about 9 h and reproducibly reached about 65% Cu^{II} conversion at 25 °C, as calculated from the intensity of the $Cu^{II}(A\beta_{4-16})$ d–d band at 525 nm (Table 1). It was followed by the shorter reoxidation phase, which led to a practically full restoration of $Cu^{II}(A\beta_{4-16})$. In the absence of $A\beta_{4-16}$, the $Cu^{II}GSSG$ complex absorbing at 625 nm was the final reaction product (Figure S1). It was not formed in the presence of $Cu^{II}(A\beta_{4-16})$, because of the log K difference at pH 7.4 in favor of the latter, 10.37 vs 13.53.^{15,35} The reaction rates increased with temperature (Figure S5). The ESI-MS analysis of reaction products indicated the absence of covalent oxidative modification of $A\beta_{4-16}$ (Figures S6 and S7). The only change in its mass spectrum was due to partial detachment of bound Cu^{II} ion resulting from its capture by GSH. The mass deficit of 2 Da, seen only in the copper-containing species, indicated the native ATCUN/NTS complex with two deprotonated, Cu^{II} -bound amide nitrogens.¹⁵ A transient spectral feature at 390–405 nm accompanied the Cu^I reoxidation phase. The same feature was present during the reoxidation phase of Cu^{II}/GSH reaction in the absence of $A\beta_{4-16}$ (Figure S8); hence it involves neither $A\beta_{4-16}$ nor its Cu^{II} complex. A similar band was seen previously in a study of Cu^I complexes in MT-3 and interpreted to originate from Cu^I – Cu^I interactions in the Cu_4 -thiolate cluster.³⁶ Indeed, Cu^I preferentially forms a Cu_4GSH_6 cluster at the molar excess of GSH.³³ However, the selective appearance of this low-energy band during oxidative decomposition of Cu_4GSH_6 by molecular oxygen

suggests a contribution from partially oxidized species such as disulfide or Cu^{II} . This issue will be investigated separately.

The next series of reduction experiments was performed under the effectively anaerobic conditions, and indeed only the reduction phase of the reaction was observed during the 24 h incubation, leading to full Cu^{II} reduction (Figure 1B). Upon extending the incubation to 50 h, however, the reoxidation phase was observed after about 36 h of the incubation (Figure S9). This effect was due to ambient oxygen penetration of the samples residing in the spectrophotometer. The comparison of kinetic traces indicated the similarity of the early phase of the reduction process between the aerobic and anaerobic conditions (Figure S10). These traces exhibited the mathematical form of first order kinetics for all conditions, only differing by the degree of Cu^{II} reduction: ca. 65% under aerobic and nearly 100% under anaerobic conditions. However, as the actual reaction order was not determined, we compared the kinetics of individual reactions using initial velocities. The rate of Cu^{II} reduction did not depend on the presence of ambient oxygen (Tables 1 and 2).

Table 2. Initial Reaction Velocities, V_0 , and Conversion Degrees of Cu^{II} Reduction to Cu^{I} /GSH Performed at 25 °C in the Presence of $A\beta_{4-9}$ and $A\beta_{12-16}$ Peptides^a

	aerobic	anaerobic
V_0	$A\beta_{4-9}$	
	7 ± 2	10 ± 2
conversion degree	0.54 ± 0.05	0.91 ± 0.04
	$A\beta_{12-16}$	
V_0	2200 ± 500	1600 ± 400
	0.97 ± 0.02	0.98 ± 0.02

^aDetermined from the initial decay of the d–d band (527 and 524 nm, respectively). Velocities are given in nM/s; all data are shown \pm SD.

Figure 2 presents examples of experiments performed aerobically with Cu^{II} complexes of $A\beta_{4-9}$ and $A\beta_{12-16}$ peptides. The $\text{Cu}A\beta_{4-9}$ reduction was similarly slow, but that of $\text{Cu}A\beta_{12-16}$ was about 200 times faster than that of $\text{Cu}A\beta_{4-16}$ (Table 2). The reoxidation phase occurred, however, similarly

in all three cases (Figures 1 and 2). The reduction of $\text{Cu}A\beta_{1-16}$ under the same conditions was too fast for quantitation (Figure S11).

The kinetic, but not thermodynamic, resistance of $\text{Cu}^{\text{II}}A\beta_{4-16}$ to reduction to Cu^{I} species by thiols has been indicated in previous experiments.^{32,37} Its kinetic character is reinforced by fast reduction of $\text{Cu}^{\text{II}}A\beta_{12-16}$, which has higher thermodynamic stability than $\text{Cu}^{\text{II}}A\beta_{4-16}$.^{15,25} A clue for the mechanistic basis of this behavior is provided by the accelerating role of glutamic acid in both reductive copper transfer to MT-3 and nonreductive transfer to EDTA, along the affinity gradient.³⁸ This finding was interpreted in terms of assistance of copper transfer from the ATCUN/NTS motif via a putative partially coordinated intermediate species prone to form a ternary complex with a small transfer catalyst ligand. A similar mechanism was recently proposed in a study of Cu^{II} reduction by GSH alone.³⁹ In the case of $\text{Cu}^{\text{II}}A\beta_{12-16}$, the fast Cu^{II} reduction is most likely facilitated by the His residue in position two of the peptide chain, able to provide an alternatively coordinated, minor 3N species.^{40,41} Such complexes are known to exchange Cu^{II} ions rapidly.⁴² They can also stabilize transient Cu^{I} species.³⁸ $\text{Cu}^{\text{II}}A\beta_{1-16}$ is known to facilitate Cu^{II} reduction to Cu^{I} by a number of mechanisms and is prone to ternary complex formation.^{43,44}

Summarizing, the results presented above indicate that $\text{Cu}^{\text{II}}A\beta_{4-16}$ and especially $\text{Cu}^{\text{II}}A\beta_{4-9}$ are sufficiently kinetically resistant to reduction by physiological concentrations of GSH to survive in the cell cytosol for hours without eliciting oxidative damage, while $\text{Cu}^{\text{II}}A\beta_{12-16}$ and $\text{Cu}^{\text{II}}A\beta_{1-16}$ do not have this ability. Therefore, $\text{Cu}^{\text{II}}A\beta_{4-x}$ complexes are good candidates to shuffle Cu^{II} across the blood–brain barrier and in and out of the brain cells.

■ ASSOCIATED CONTENT

Supporting Information

The Supporting Information is available free of charge at <https://pubs.acs.org/doi/10.1021/acs.inorgchem.0c00427>.

Experimental details, additional spectroscopic experiments, mass spectrometry data (PDF)

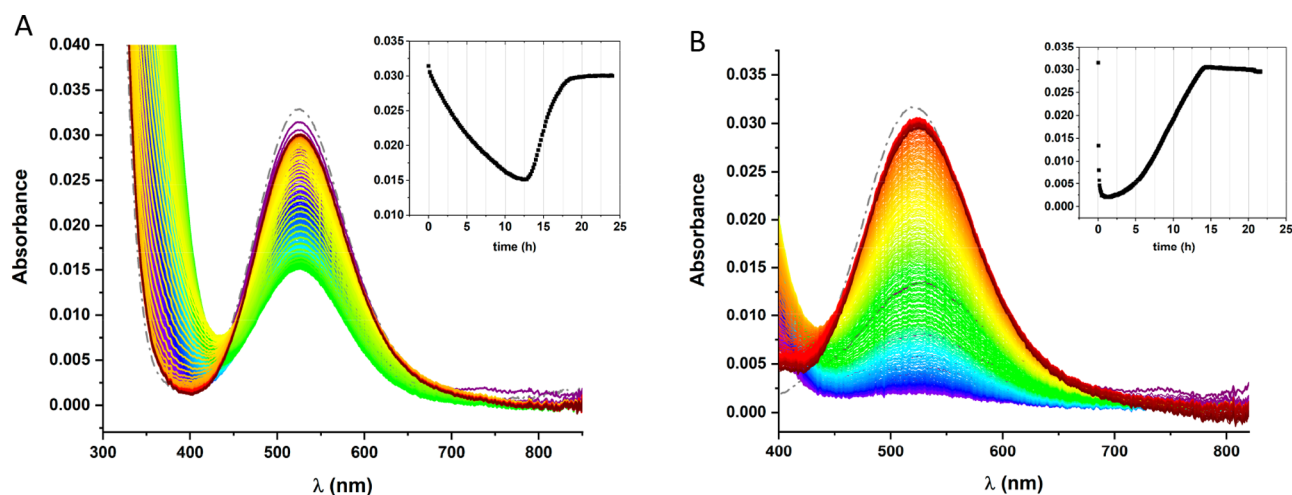


Figure 2. UV–vis spectra of the reaction of 0.315 mM Cu^{II} ions with 1.75 mM GSH in the presence of 0.35 mM $A\beta_{4-9}$ (A) and $A\beta_{12-16}$ (B) in 20 mM ammonium acetate buffer, pH 7.4, carried out for 22–24 h at 25 °C under aerobic conditions. The spectra were recorded in 10 min intervals. Insets show selected kinetic traces at 527 nm (A) and 524 nm (B).

■ AUTHOR INFORMATION

Corresponding Author

Wojciech Bal – Institute of Biochemistry and Biophysics, Polish Academy of Sciences, 02-106 Warsaw, Poland; orcid.org/0000-0003-3780-083X; Email: wbal@ibb.waw.pl

Authors

Ewelina Stefaniak – Institute of Biochemistry and Biophysics, Polish Academy of Sciences, 02-106 Warsaw, Poland

Dawid Płonka – Institute of Biochemistry and Biophysics, Polish Academy of Sciences, 02-106 Warsaw, Poland; orcid.org/0000-0002-4076-9231

Paulina Szczerba – Chair of Medical Biotechnology, Faculty of Chemistry, Warsaw University of Technology, 00-664 Warsaw, Poland

Nina E. Wezynfeld – Chair of Medical Biotechnology, Faculty of Chemistry, Warsaw University of Technology, 00-664 Warsaw, Poland

Complete contact information is available at:

<https://pubs.acs.org/10.1021/acs.inorgchem.0c00427>

Notes

The authors declare no competing financial interest.

■ ACKNOWLEDGMENTS

This work was supported by OPUS Grant No. 2018/29/B/ST4/01634 and PRELUDIUM Grant No. 2016/21/N/NZ1/02785 (National Science Centre, Poland). The equipment used was sponsored, in part, by the Centre for Preclinical Research and Technology (CePT), a project cosponsored by the European Regional Development Fund and Innovative Economy, The National Cohesion Strategy of Poland.

■ REFERENCES

- (1) Selkoe, D. J. Amyloid β Protein Precursor and the Pathogenesis of Alzheimer's Disease. *Cell* **1989**, *58* (4), 611–612.
- (2) Müller, U. C.; Deller, T.; Korte, M. Not Just Amyloid: Physiological Functions of the Amyloid Precursor Protein Family. *Nat. Rev. Neurosci.* **2017**, *18* (5), 281–298.
- (3) Selkoe, D. J. Alzheimer's Disease: Genes, Proteins, and Therapy. *Physiol. Rev.* **2001**, *81* (2), 741–766.
- (4) Deshpande, A.; Mina, E.; Glabe, C.; Busciglio, J. Different Conformations of Amyloid Beta Induce Neurotoxicity by Distinct Mechanisms in Human Cortical Neurons. *J. Neurosci.* **2006**, *26* (22), 6011–6018.
- (5) Masters, C. L.; Selkoe, D. J. Biochemistry of Amyloid β -Protein and Amyloid Deposits in Alzheimer Disease. *Cold Spring Harbor Perspect. Med.* **2012**, *2* (6), a006262.
- (6) Zott, B.; Simon, M. M.; Hong, W.; Unger, F.; Chen-Engerer, H.-J.; Frosch, M. P.; Sakmann, B.; Walsh, D. M.; Konnerth, A. A Vicious Cycle of β Amyloid-Dependent Neuronal Hyperactivation. *Science (Washington, DC, U. S.)* **2019**, *365* (6453), 559–565.
- (7) Lewis, H.; Beher, D.; Cookson, N.; Oakley, A.; Piggott, M.; Morris, C. M.; Jaros, E.; Perry, R.; Ince, P.; Kenny, R. A.; Ballard, C. G.; Shearman, M. S.; Kalaria, R. N. Quantification of Alzheimer Pathology in Ageing and Dementia: Age-Related Accumulation of Amyloid-Beta(42) Peptide in Vascular Dementia. *Neuropathol. Appl. Neurobiol.* **2006**, *32* (2), 103–118.
- (8) Portelius, E.; Bogdanovic, N.; Gustavsson, M. K.; Volkman, I.; Brinkmalm, G.; Zetterberg, H.; Winblad, B.; Blennow, K. Mass Spectrometric Characterization of Brain Amyloid Beta Isoform Signatures in Familial and Sporadic Alzheimer's Disease. *Acta Neuropathol.* **2010**, *120* (2), 185–193.
- (9) Alies, B.; Renaglia, E.; Rózga, M.; Bal, W.; Faller, P.; Hureau, C. Cu(II) Affinity for the Alzheimer's Peptide: Tyrosine Fluorescence Studies Revisited. *Anal. Chem.* **2013**, *85* (3), 1501–1508.
- (10) Young, T. R.; Kirchner, A.; Wedd, A. G.; Xiao, Z. An Integrated Study of the Affinities of the A β 16 Peptide for Cu(I) and Cu(II): Implications for the Catalytic Production of Reactive Oxygen Species. *Metallomics* **2014**, *6* (3), 505–517.
- (11) Conte-Daban, A.; Borghesani, V.; Sayen, S.; Guillon, E.; Journaux, Y.; Gontard, G.; Lisnard, L.; Hureau, C. Link between Affinity and Cu(II) Binding Sites to Amyloid- β Peptides Evaluated by a New Water-Soluble UV-Visible Ratiometric Dye with a Moderate Cu(II) Affinity. *Anal. Chem.* **2017**, *89* (3), 2155–2162.
- (12) Cheignon, C.; Jones, M.; Atrián-Blasco, E.; Kieffer, I.; Faller, P.; Collin, F.; Hureau, C. Identification of Key Structural Features of the Elusive Cu-A β Complex That Generates ROS in Alzheimer's Disease. *Chem. Sci.* **2017**, *8* (7), 5107–5118.
- (13) Cheignon, C.; Faller, P.; Testemale, D.; Hureau, C.; Collin, F. Metal-Catalyzed Oxidation of A β and the Resulting Reorganization of Cu Binding Sites Promote ROS Production. *Metallomics* **2016**, *8* (10), 1081–1089.
- (14) Cheignon, C.; Tomas, M.; Bonnefont-Rousselot, D.; Faller, P.; Hureau, C.; Collin, F. Oxidative Stress and the Amyloid Beta Peptide in Alzheimer's Disease. *Redox Biol.* **2018**, *14*, 450–464.
- (15) Mital, M.; Wezynfeld, N. E.; Frączyk, T.; Wiloch, M. Z.; Wawrzyniak, U. E.; Bonna, A.; Tumpach, C.; Barnham, K. J.; Haigh, C. L.; Bal, W.; Drew, S. C. A Functional Role for A β in Metal Homeostasis? N-Truncation and High-Affinity Copper Binding. *Angew. Chem., Int. Ed.* **2015**, *54* (36), 10460–10464.
- (16) Harford, C.; Sarkar, B. Amino Terminal Cu(II)- and Ni(II)-Binding (ATCUN) Motif of Proteins and Peptides: Metal Binding, DNA Cleavage, and Other Properties. *Acc. Chem. Res.* **1997**, *30* (3), 123–130.
- (17) Stefaniak, E.; Bal, W. Binding Properties of N-Truncated A β Peptides: In Search of Biological Function. *Inorg. Chem.* **2019**, *58* (20), 13561–13577.
- (18) Hopt, A.; Korte, S.; Fink, H.; Panne, U.; Niessner, R.; Jahn, R.; Kretschmar, H.; Herms, J. Methods for Studying Synaptosomal Copper Release. *J. Neurosci. Methods* **2003**, *128* (1), 159–172.
- (19) Shibata, M.; Yamada, S.; Kumar, S. R.; Calero, M.; Bading, J.; Frangione, B.; Holtzman, D. M.; Miller, C. A.; Strickland, D. K.; Ghiso, J.; Zlokovic, B. V. Clearance of Alzheimer's Amyloid-Ss(1–40) Peptide from Brain by LDL Receptor-Related Protein-1 at the Blood-Brain Barrier. *J. Clin. Invest.* **2000**, *106* (12), 1489–1499.
- (20) Deane, R.; Du Yan, S.; Subramanian, R. K.; LaRue, B.; Jovanovic, S.; Hogg, E.; Welch, D.; Manness, L.; Lin, C.; Yu, J.; Zhu, H.; Ghiso, J.; Frangione, B.; Stern, A.; Schmidt, A. M.; Armstrong, D. L.; Arnold, B.; Liliensiek, B.; Nawroth, P.; Hofman, F.; Kindy, M.; Stern, D.; Zlokovic, B. RAGE Mediates Amyloid- β Peptide Transport across the Blood-Brain Barrier and Accumulation in Brain. *Nat. Med.* **2003**, *9* (7), 907–913.
- (21) Paroni, G.; Bisceglia, P.; Seripa, D. Understanding the Amyloid Hypothesis in Alzheimer's Disease. *J. Alzheimer's Dis.* **2019**, *68* (2), 493–510.
- (22) Kanemitsu, H.; Tomiyama, T.; Mori, H. Human Nepriylisin Is Capable of Degrading Amyloid β Peptide Not Only in the Monomeric Form but Also the Pathological Oligomeric Form. *Neurosci. Lett.* **2003**, *350* (2), 113–116.
- (23) Oefner, C.; Roques, B. P.; Fournie-Zaluski, M.-C.; Dale, G. E. Structural Analysis of Nepriylisin with Various Specific and Potent Inhibitors. *Acta Crystallogr., Sect. D: Biol. Crystallogr.* **2004**, *60* (2), 392–396.
- (24) Mital, M.; Bal, W.; Frączyk, T.; Drew, S. C. Interplay between Copper, Nepriylisin, and N-Truncation of β -Amyloid. *Inorg. Chem.* **2018**, *57* (11), 6193–6197.
- (25) Bossak-Ahmad, K.; Mital, M.; Płonka, D.; Drew, S. C.; Bal, W. Oligopeptides Generated by Nepriylisin Degradation of β -Amyloid Have the Highest Cu(II) Affinity in the Whole A β Family. *Inorg. Chem.* **2019**, *58* (1), 932–943.

- (26) Deane, R.; Bell, R. D.; Sagare, A.; Zlokovic, B. V. Clearance of Amyloid-Beta Peptide across the Blood-Brain Barrier: Implication for Therapies in Alzheimer's Disease. *CNS Neurol. Disord.: Drug Targets* **2009**, *8* (1), 16–30.
- (27) Maher, P. The Effects of Stress and Aging on Glutathione Metabolism. *Ageing Res. Rev.* **2005**, *4* (2), 288–314.
- (28) Sies, H. Glutathione and Its Role in Cellular Functions. *Free Radical Biol. Med.* **1999**, *27*, 916.
- (29) Hatori, Y.; Lutsenko, S. The Role of Copper Chaperone Atox1 in Coupling Redox Homeostasis to Intracellular Copper Distribution. *Antioxidants* **2016**, *5* (3), 25.
- (30) Maryon, E. B.; Molloy, S. A.; Kaplan, J. H. Cellular Glutathione Plays a Key Role in Copper Uptake Mediated by Human Copper Transporter 1. *Am. J. Physiol. Cell Physiol.* **2013**, *304* (8), C768–C779.
- (31) Bachhawat, A. K.; Thakur, A.; Kaur, J.; Zulkifli, M. Glutathione Transporters. *Biochim. Biophys. Acta, Gen. Subj.* **2013**, *1830* (5), 3154–3164.
- (32) Santoro, A.; Ewa Wezynfeld, N.; Vařák, M.; Bal, W.; Faller, P. Cysteine and Glutathione Trigger the Cu-Zn Swap between Cu(II)-Amyloid-B4–16 Peptide and Zn7-Metallothionein-3. *Chem. Commun.* **2017**, *53* (85), 11634–11637.
- (33) Morgan, M. T.; Nguyen, L. A. H.; Hancock, H. L.; Fahrni, C. J. Glutathione Limits Aquacopper(I) to Sub-Femtomolar Concentrations through Cooperative Assembly of a Tetranuclear Cluster. *J. Biol. Chem.* **2017**, *292* (52), 21558–21567.
- (34) Speisky, H.; Gómez, M.; Carrasco-Pozo, C.; Pastene, E.; Lopez-Alarcón, C.; Olea-Azar, C. Cu(I)–Glutathione Complex: A Potential Source of Superoxide Radicals Generation. *Bioorg. Med. Chem.* **2008**, *16* (13), 6568–6574.
- (35) Várnagy, K.; Sóvágó, I.; Kozłowski, H. Transition Metal Complexes of Amino Acids and Derivatives Containing Disulphide Bridges. *Inorg. Chim. Acta* **1988**, *151* (2), 117–123.
- (36) Meloni, G.; Faller, P.; Vařák, M. Redox Silencing of Copper in Metal-Linked Neurodegenerative Disorders: Reaction of Zn7metallothionein-3 with Cu²⁺ Ions. *J. Biol. Chem.* **2007**, *282* (22), 16068–16078.
- (37) Wezynfeld, N. E.; Stefaniak, E.; Stachucy, K.; Drozd, A.; Plonka, D.; Drew, S. C.; Kręzel, A.; Bal, W. Resistance of Cu(Aβ4–16) to Copper Capture by Metallothionein-3 Supports a Function for the Aβ4–42 Peptide as a Synaptic CuII Scavenger. *Angew. Chem., Int. Ed.* **2016**, *55* (29), 8235–8238.
- (38) Santoro, A.; Wezynfeld, N.; Stefaniak, E.; Pomorski, A.; Plonka, D.; Kręzel, A.; Bal, W.; Faller, P. Cu Transfer from Amyloid-B4–16 to Metallothionein-3: The Role of Neurotransmitter Glutamate and Metallothionein-3 Zn(II)-Load States. *Chem. Commun.* **2018**, *54*, 12634–12637.
- (39) Ngamchuea, K.; Batchelor-McAuley, C.; Compton, R. G. The Copper(II)-Catalyzed Oxidation of Glutathione. *Chem. - Eur. J.* **2016**, *22* (44), 15937–15944.
- (40) Gonzalez, P.; Vileno, B.; Bossak, K.; El Khoury, Y.; Hellwig, P.; Bal, W.; Hureau, C.; Faller, P. Cu(II) Binding to the Peptide Ala-His-His, a Chimera of the Canonical Cu(II)-Binding Motifs Xxx-His and Xxx-Zzz-His. *Inorg. Chem.* **2017**, *56* (24), 14870.
- (41) Gonzalez, P.; Bossak-Ahmad, K.; Vileno, B.; Wezynfeld, N. E.; El Khoury, Y.; Hellwig, P.; Hureau, C.; Bal, W.; Faller, P. Triggering Cu-Coordination Change in Cu(II)-Ala-His-His by External Ligands. *Chem. Commun.* **2019**, *55* (56), 8110–8113.
- (42) Hureau, C.; Eury, H.; Guillot, R.; Bijani, C.; Sayen, S.; Solari, P.-L.; Guillon, E.; Faller, P.; Dorlet, P. X-Ray and Solution Structures of CuIIGHK and CuIIDAHK Complexes: Influence on Their Redox Properties. *Chem. - Eur. J.* **2011**, *17* (36), 10151–10160.
- (43) Atrián-Blasco, E.; Del Barrio, M.; Faller, P.; Hureau, C. Ascorbate Oxidation by Cu(Amyloid- β) Complexes: Determination of the Intrinsic Rate as a Function of Alterations in the Peptide Sequence Revealing Key Residues for Reactive Oxygen Species Production. *Anal. Chem.* **2018**, *90* (9), 5909–5915.
- (44) Atrián-Blasco, E.; Gonzalez, P.; Santoro, A.; Alies, B.; Faller, P.; Hureau, C. Cu and Zn Coordination to Amyloid Peptides: From Fascinating Chemistry to Debated Pathological Relevance. *Coord. Chem. Rev.* **2018**, *371*, 38–55.