

SUNY College of Environmental Science and Forestry

Digital Commons @ ESF

The Knothole

College Archives

11-15-1995

Knothole November 15, 1995 Vol 48 No 11

SUNY College of Environmental Science and Forestry

Follow this and additional works at: <https://digitalcommons.esf.edu/knothole>



Part of the [Communication Commons](#), [Creative Writing Commons](#), and the [Environmental Studies Commons](#)

Recommended Citation

SUNY College of Environmental Science and Forestry, "Knothole November 15, 1995 Vol 48 No 11" (1995). *The Knothole*. 647.

<https://digitalcommons.esf.edu/knothole/647>

This Newspaper is brought to you for free and open access by the College Archives at Digital Commons @ ESF. It has been accepted for inclusion in The Knothole by an authorized administrator of Digital Commons @ ESF. For more information, please contact digitalcommons@esf.edu, cjkoons@esf.edu.

Knothole

SUNY College of Environmental Science and Forestry

November 15, 1995

Volume 48 Number 11

SU's Health Insurance Policy Problem

by Eric Mucha, News Staff

Any ESF student that knows about the current Gerber Life plan probably isn't very satisfied with it. It is \$800 cheaper than the Blue Cross/Blue Shield plan that would have been offered to SU by the company, but there is a big letdown when it comes to its comprehensiveness. It seems like the University can't come up with an affordable, comprehensive plan that will break the trend of declining enrollment that the more expensive Blue Cross/Blue Shield plan had a problem with in the past.

Less than 5% of all SU/ESF students are covered under the University's current health insurance plan. This may be attributed to the trend in rising costs of the BlueCross/Blue Shield plan since the '92-'93 academic year. Enrollment fell drastically as prices continued to rise, so the university thought the answer might be a cheaper, more affordable plan, such as the Gerber Life plan.

Students are upset that the new plan limits them to the SU health center for treatment. They question the quality of care offered by the

health center.

Obvious differences are visible between the two companies: 1) Gerber includes benefits of up to \$250,000 per injury or illness after a \$50 deductible. Blue Cross offered benefits of up to \$1million with a \$100 deductible. 2) Gerber covers a maximum of \$1,500 for surgery. Blue Cross pays up to 80% of the first \$2,000 and 100% of additional expenses.

As expected, with every pro there also exists a con. The Gerber plan is less than half the cost of Blue Cross: \$700 vs. \$1,500. Apparently, SU cannot find the balance between quality and price that students want.

There may be a reason for the University's insurance problem- it's optional. If a plan were mandatory, a carrier would be guaranteed a certain minimum number of customers and could provide better packages to those students not already covered under their parent's insurance.

To solve the health plan problem
Insurance continues on pg. 6

LOOKING AHEAD CAREER AND COUNSELING SERVICES

110 Bray Hall

HOME FOR THE HOLIDAYS

Information Interviews

A good way to break through the barrier of the protective personnel office so you can speak to potential employers is to request an information interview. This is a fairly well known term and is basically understood to mean you are not looking for employment now, only seeking information about what employers are looking for in new employees. As a student home for the holidays, you are in a good position to request a 20-30 minute session with a department head to find out what courses you should be taking, what skills and background they desire, and how you can best position yourself to meet their needs upon graduation. Go in with a brief synopsis of your background and interests and

Career continues on Pg. 6



Policy/Deadlines

The Knothole is the student publication of the State University of New York College of Environmental Science and Forestry. It is published every Wednesday during the school year. The deadline for submitting pieces for publication is WEDNESDAY at 4:00 pm on the week before they are to appear. On disk or by e-mail, the deadline is THURSDAY at 12 noon. E-mail submissions may be sent to KNOTHOLE@MAILBOX.SYR.EDU Letters to the Editor will not be printed unless they are signed. Articles must also contain the writer's name (names will be withheld upon request). The opinions expressed are those of the writer only and do not necessarily reflect the opinions of the paper's staff or anyone else affiliated with the College. We strongly encourage any counterinterviews, articles, notices, suggestions, and new staff members. The Knothole staff meets in Room 22 in the basement of Bray, Wednesdays at 6:30. Phone: 470-6892.

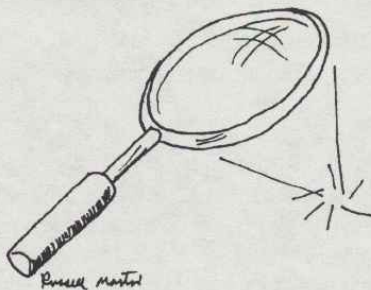
Editor in Chief:	Greg Bubniak
Managing Editor:	Laura Forcella
News Editor:	Samantha Callender
Copy Editors:	Dave McCue Dawn Montanye
Layout Editors:	Jonathan Logan Missy Karanosky
Graphics Editor:	Russ Martin
Typists:	Karen Andrews
News staff:	Liz Pizzey Rebecca Kane Matthew Sheehy Eric Mucha
Columnists:	Richard Boylan Greg Bubniak
Artwork:	Russ Martin Peter Fry
Photographers:	Matt Cahill
Distribution Manager:	Andrea Chempinski
Distribution:	Jerimiah Williams Wendy Owens
Printer:	Steve Darrow
Advisor:	Patrick Lawler

From the editor

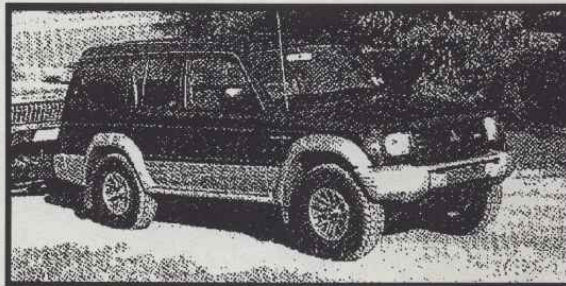
Clarification

In last weeks *Knothole* article, "The Future of Equipping Public Safety with Firearms," a sentence read, "If our Public Safety officers were allowed to carry arms, Paradiso and McGuinness say that they would like to survey the students and faculty."

Mr. Paradiso would rather the sentence use the word "consult" then "survey" to properly represent the ESF administration.



Syracuse Automotive Club will be holding a free car Winterization Clinic on November 18 from 11-3pm at the Syracuse University Physical Plant on Ainsley Drive. Questions?—Email the president, Dayton Carpenter, at Djcarpen@mailbox.syr.edu or call 426-8058.



Mr. Editor:

I was appalled by Mr. Richard Boylen's submission in the last issue of the *Knothole* (Vol.48, No.9, p.2). His portrait of the pulp and paper industry as a destroyer of forests was demagogic, because there was no indication of where and when the photograph was taken. It was also an insult to the hard-working foresters and papermakers of America, who have committed themselves to sustainable forestry practices.

Citing TAPPI Earth Answers: "Most trees used for paper come from forests called managed timberlands. Even though the trees in these timberlands may look like 'woods,' they are an agricultural crop -like vegetables on a farm. The trees are grown to be made into products for human use. Not using paper in order to save trees is like not eating salad in order to 'save' vegetables."

Sincerely,

Jose Iribarne
Graduate Student, PSE

303 Walters Hall
Phone 470-6504

Around Campus

Society of American Foresters SAF NEWS:

FUTURE MEETINGS

November 15th, 212 Marshall at 6pm: DEC Forester; Dave Forness will be speaking about Ecosystem Management on State Land.

November 29th, 212 Marshall at 6pm: ESF Graduate; Todd Waldron



will be speaking about his employment with International Paper.

December 6th, 212 Marshall at 6pm: PIZZA PARTY!!!! This will be the last meeting of the Fall semester. We will be discussing plans for the Spring and electing people for empty office positions.

SHIRTS ARE IN!!!!!! People who ordered shirts at the first meeting can pick them up at one of the following meetings:

November 15th in 212 Marshall at 6pm
November 29th in 212 Marshall at 6pm
December 6th in 212 Marshall at 6pm

Please remember your \$8 for the shirts.

ALSO:
PLANT SALE!!!!!! We will be having a plant sale on Thursday November 16th from 10am to 4pm in Marshall foyer.

NEW COURSE OFFERING:

Films on the Environment

LSA 496 Section 9 Reference No. 66624

CLL 496 Section 1 Reference No. 62134

3 Credit Hours Open to all students.

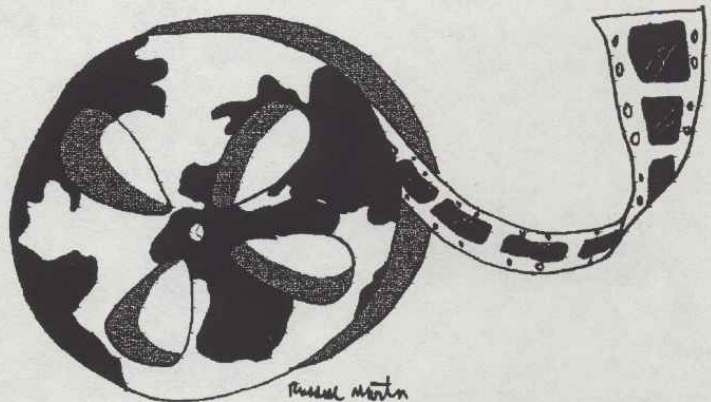
Dr. Hanselman

Screenings: Illick TV Studio (students may attend any one of three) Wednesday 9:35-10:30, 11:45-12:40 and 3:00-3:55
Discussion: 319 Marshall—
Thursday 1:00-2:20

Each week we will screen represen-

tative films (videos) dealing with a broad range of environmental issues. We will look at contemporary films and some of the classics from the early environmental movement. Included will be films produced for PBS, the Discovery Channel, children and adult audiences. Some videos will be highly objective, others will be controversial.

Students will attend one of three scheduled screenings each week and participate in the discussion session the following day. We will examine both content and how the message was constructed. Handouts will be provided. Journals will be required in which each film is critiqued. There will be a term project and three quizzes.



Gamma Delta Theta News

by ME(Jen)

Well, all is well in Greek Land. We had our first ever Founder's Day and Alumni Reunion. Nineteen ESF and SU women came back from all over the country to reacquaint themselves with each other and to get to know the present sisters. A fun time was had by all. The most fun was looking through photo-albums and hearing the inside story. Congratulations to Pam and her wonderful committee for all the hard work. We

are looking forward to next year already.

Another thing happening is the Thanksgiving Food Drive. I made a mistake in my article last week concerning the group that is benefitted. The food all goes to the Interreligious Food Consortium. Don't ask how I messed that one up, it is a long story. Elections will also be occurring within the house so we will see how long I keep writing this lovely little weekly synopses. Also, there will be a Rape Awareness Seminar sponsored by the sorority, so keep a look-out for signs. That's all I have time to write now, so I'll catch you next week.

Hello Seniors!

The semester is flying along and if you're feeling the pressure like most are, it can't be over soon enough!

I'm dropping you a line to let you know what's happening with the senior class. On November 15, at 5:15 pm in Moon Conference Room, we will be having a class meeting which will address some impotent issues regarding graduation, convocation, school rings, December Soiree, and your senior class gift too. You, of course, have a say in these matters. It is recommended that you attend to remain informed of what's happening and help us make choices as the semester draws to a close.

If you are unable to attend the class meeting, feel free to submit any suggestions or comments in 110 Bray Hall or in my mailbox in the basement of Bray Hall (by the soda machines).

If you are interested in planning or helping out with any events, we

could use your help! My phone number is 428-8278. So whether you are graduating in December or May, come out and stay in touch with us!

-Lawrence Clegg
Senior Class Chair



Untitled

I keep hearing sirens
bent double and reaching
a cross between sugar
and the sluggish limbs
torn by awkward needles
spinning with adrenaline
otherwise sedated
wandering from & with alarm
to bouts of universal love
with eyes closed
the pendulum swings

-Anonymous

News from Kappa Phi Delta

by J.E. Greene

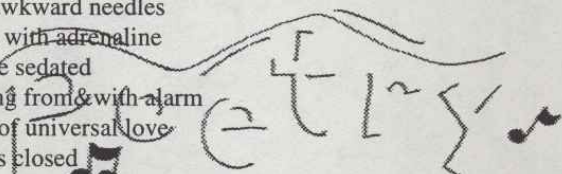
Hello, once again. First of all, we would like to thank the girls of Gamma Delta Theta for cooking us Thanksgiving Dinner on Sunday, November 5. The food tasted great. Also, sorry to the Gamma girls concerning the farce which was supposed to be our Halloween haunted hayride. Maybe next year.

We have done a lot of repairs around the house. Pony put linoleum tile on our rain porch. Perm and Split refinished the second floor landing. In fact, all of the brothers have done a little bit to make the house look a little better. Hopefully, our hardwood living room floor will be visible from under all of the adhesive that held the previous carpet down.

Unfortunately, we had to get rid of our mascot, Boomer. Kodiak is lonely now, but don't worry, Boomer has a good home with myself and my six other dogs. He still hasn't quite figured out what the cats are, though.

Christmas is just around the corner, and we will once again be having our annual Christmas tree drive. In a couple of weeks, if you are interested in an affordable X-mas tree stop by and talk to one of the brothers. We will have several species (good study aides for dendro students).

Until next time, keep warm.



Some Words on the Assassination of Israel's Prime Minister Yitzchak Rabin

Lauren Goldfish
9 November 1995

The assassination of Yitzchak Rabin this past week was a devastating event: for the international community, justifiably made nervous by the events in the Middle East, for the international Jewish community whose hearts are torn by unrest in their homeland, and for the Israelis that are now witnessing internal problems considered inconceivable until now. As a Jew far from a country I love, this event tears at the heart, and I would like to share with the ESF community part of my reaction, including feelings that pertain quite directly to life in America.

The Jews are not known as a violent people. On PBS Elie Wiesel said this is the first time in 2000 years that a Jew has murdered another Jew. Our culture is known for our devotion to

life in peace. What has gone wrong in our fabric that we are now able to kill the leader of our own country? For those unhappy with Rabin's political platform, avenues outside of this form of rebellion must be sought. This form of dissension, needless to say, can destroy the precarious stability Israel lives with.

We are nervous as we wait for news on what the new direction of our country will be. We want to live in peace, to be able to practice our religion without the violent persecution our tradition has endured during 2000 years in exile. Our prayers are turned towards the people of Israel in hope that the country will soon see easier times.

The issue underlying the assassination was expressed in America

this past spring, in the Oklahoma Bombing. At a different time, an individual feeling alienated from his government expressed himself through violence. I think that we should consider how important it is to not feel alienated from our communities, that violence is partially derived from the distance created among and between peoples. After tragic incidents like these, we are left bewildered, wondering how patterns can develop in one's life that would create such feelings of alienation. It seems that only after tragedy we feel united; part of the same injured community. We must inspect how we view community and its estranged individuals before tragedies like these occur again.

Klaas Martens to Speak in Illick on Organic Farming

On Wednesday November 15th, 7pm Illick Hall, Room 5, ESF Campus, Sierra Club will be presenting a lecture by Klaas Martens Jr. Mr. Martens is an organic farmer who developed a number of diversified crops including soy bean varieties, buckwheat, corn, and rye. Mr. Martens is an expert on soil conservation and reducing erosion, and exports many of his products abroad. His is a second generation farm, previously a dairy farm, but now exclusively an organic crop farm. The lecture, entitled, "Farming and Environmental Concerns: Are they at odds?" will include Mr. Martens' vast knowledge of the spaying of crops and the seepage of spray into water tables.

The public is invited. The lecture is free and there is easy parking. Sierra Club calendars will be on sale.



The National Sierra Club, one of the most respected and influential environmental groups in the country, was founded in 1892 to explore, enjoy

This lecture is replacing the lecture originally scheduled by Sierra Club featuring Bruce Krug.

The National Sierra Club, one of the most respected and influential environmental groups in the country, was founded in 1892 to explore, enjoy

and protect the environment. The national, state and local chapters promote the responsible use of the earth's ecosystems and resources, with a stress on education and the protection and restoration of the quality of the natural human environment.

For more information please contact:

Rhea Jezer, PhD, Chair
P.O. Box 183
Dewitt, New York 13214
Phone: 315-446-7060
Fax: 315-446-6053
Email:

rjezer@mailbox.syr.edu

SUNY's Student Assembly Trustee Moves Board to Compromise

Insurance from pg. 1

After two weeks of deliberation, Diego Munoz, President of the Student Assembly and student representative to the State University Board of Trustees, brought the Board's Finance Committee to a unanimous consent vote on a budget submission to the Governor. Since October 18, the SUNY Board had been working on whether to submit a formal budget recommendation to the Governor that would accommodate the Division of the Budget request for Baseline budget with inflation increases.

Yesterday, in a Finance Com-



mittee meeting of the Board of Trustees, Munoz offered that the committee should approve the Base-Line budget now and offer amendments to it during the Governor's 30 day amendment period commencing with the day he submits his Executive Budget. The committee agreed to the compromise and came to consensus with unanimous consent vote.

Student Assembly of the State University of New York is the only state-wide student governance body representing all 400,000 students on the 64 campuses of the SUNY system.

lem, a group of SU and ESF students have formed a committee and have been meeting with Sue Hubbell, Associate Director of Business Support of the SU Health Center. They have set two goals. The first goal is to develop an extended plan option (EPO) to supplement the basic Gerber policy. This extended plan option will give students the opportunity to purchase more extensive health insurance coverage. The second goal is to determine the health insurance needs of students to develop a better health insurance policy for the '96-'97 academic year.

Another solution is to reach those in charge of the health center, such as Carol Walker Brown (cwbell@syr.edu), Health Center Director, and voice your opinions about the University's health insurance plan and suggestions for the future.

Career *continued from Pg. 1*

have several career related questions ready to ask. Since you are not looking for a job, they are more likely to meet with you and be quite open with answers and advice.

The information you gain will be most helpful to you as you select courses—perhaps independent studies or internships—and provide a better understanding of exactly what employers look for in the career field you are entering. By the time you have finished the session, you know them quite well; and they know you, too. Often these information sessions result in good contacts, internships,

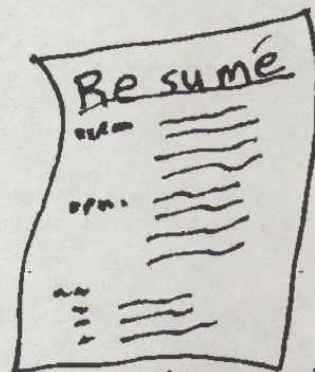
summer jobs, or even a first step in the job application process. Note the person's name and title and be sure to write a thank you letter afterwards. By taking a few hours over a vacation break to explore 2-3 categories of employers near your home, you have gained insight and confidence, and started your job search—all without the tension associated with "The Interview!"

Have questions about getting started with your job search? Stop by 110 Bray.

"The only person who never

makes a mistake is the person who never does anything."

-Theodore Roosevelt



Lesson notes

Walk-ins welcome.



The Writing Support Center
Moon Library, Room 105

Untitled
they danced
their hollowness
sang no songs while
throwing themselves wildly
blurred black shadows firelit
on black rock
and cried
"we are chemically pure"
these inoculated
drowning the echoing
cries resounding
their hearts& minds& souls

-Anonymous

A Short Story

By David Mccue

I sit bouncing in my chair.
The silence of the electronic hum
has got me looking over my
shoulder, expecting to find a giant
hand hovering over my head, ready
to slap me away. I cease bouncing;
become perfectly still. My ears
strain to perceive a click out of
place, an awkward tremble through
the hum. None can be heard. I
turn back to my work, bouncing
away, happy as an ant in his hill,
while the giant hand is perched
above my head, attached to an arm
deciding my fate.

Elementary Humour

You're back! I guess you liked
last week's stuff and have come
back for more. You won't be
disappointed. Here is some more
insight on the Adirondacks from
those lovely Missouri elementary
schoolers of 1974.

"One thing I don't know about
how mountains are made is plenty."

"Marcy is the name of a
monster in New York that has more
than 5,000 feet."

"Mt. Marcy is low on people
but high on land."

"The main product of the
Adirondacks is highness."

"The Adirondacks are mostly
populated with mountains. People
are only their second source of
population."

"Whiteface Peak has an eleva-
tion of 4,872 feet. The elevator that
makes this possible is one of the
sites worth seeing there."

I suppose you might consider
Mt. Marcy a monster if you ever
had to climb it while carrying
enough food, water, and equipment
to keep you alive for a few days.

Attention Poets

Owings Mills, Maryland
(USA)—The National Library of
Poetry has announced that \$24,000
in prizes will be awarded this year to
over 250 poets in the North Ameri-
can Open Poetry Contest. The dead-
line for the contest is December 31,
1995. The contest is open to every-
one and entry is FREE.

Any poet, whether previously
published or not, can be a winner.
Every poem entered also has a
chance to be published in a deluxe,

hardbound anthology.

To enter, send ONE original
poem, any subject and any style, to
The National Library of Poetry,
11419 Cronridge Dr., P.O. Box 704-
1942, Owings Mills, MD 21117. The
poem should be no more than 20
lines, and the poet's name and ad-
dress should appear on the top of the
page. Entries must be postmarked
by December 31, 1995. A new con-
test opens January 1, 1996.

The National Library of Poetry,
founded in 1982, is the largest po-
etry organization in the world.

SEFA / United Way Raffle

Tickets are now being sold by
students and staff to help the SEFA/
United Way Campaign.

Each ticket costs \$1.00. Draw-
ing will be held at the campus "wrap-
up" event on Monday, November 20,
1995 at 12:30 p.m. in the Marshall
Lounge. Refreshments will be
served.

Some of the items scheduled to

be raffled off are:

- Gift certificates for the Gallery
- Snack Bar,
- Plants,
- Certificate for a free Christmas
- Tree,
- ESF Clothing,
- and much more.

All proceeds benefit the ESF
SEFA/United Way Campaign. You
do not need to be present to win.

SUNY E.S.F.'S THIRD ANNUAL ENVIRONMENTAL AWARE- NESS WEEK: NOVEMBER 13-17, 1995

The Recycling Club is proud to sponsor the third annual Environmental Awareness Week. To raise eco-consciousness, the Club will provide speakers on various environmental topics, a Coffee Haus, a campus composting tour, and the sale of E.S.F. canvas tote bags and notebooks before each event. All events are open to the public. All speakers and activities will be held in Nifkin Lounge, Marshall Hall.

Wednesday, November 15

6pm - Life with the Quichua Indians of the South American Rainforest

Walter Bailey (E.S.F. senior biology major) will present slides and handicrafts from his recent study abroad in the Ecuadorian lowland rainforest. Bailey spent the spring '95 semester in Mondana, and indigenous village along the Napo River. He helped in development work for a foundation assisting rural communities.

7:30pm - Coffee Haus

All are invited to contribute their prose, song and talent to this social event sponsored by Alpha Xi Sigma and Recycling Club. Read, write, study, chat or perform as you feel! Food is sponsored by Peter's Supermarket and coffee by the Coffee Cave.

Thursday, November 16

6pm - Is Sustainable Development Just A Catch Phrase?

Dr. Ross Whaley (Dean of E.S.F.) notes that over the past 20 years a debate has raged between economic development and environmental preservation. Does the concept of sustainable development offer a reasonable compromise? What is your responsibility as an individual? Come find out from Whaley tonight!

7pm - Food Buffet

Recycling Club will sponsor a light dinner with pizza from Dorian's Restaurant, bread and dips from On The Rise Bakery and vegetables from the Green Hills Farms. All breads are made from organic grains, and the vegetables are produced on local farms.

Friday, November 17

All Day - NO PAPER OR PLASTIC DAY IN GALLERY SNACK BAR

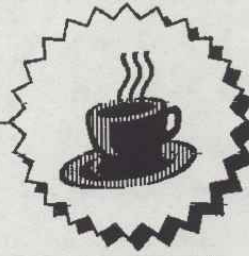
Once again, Recycling Club urges all diners to bring their own mugs, utensils, plates and bowls to be served on. Everyone's involvement on this day will lead to reduction in the amount of trash produced, thereby reducing the amount of waste going to landfills. Please do your part for the Earth's sake!

Recycling Club will be selling E.S.F. mugs outside the Gallery during the day!



Environmental Awareness





Coffeehaus

**Wednesday November 15th
7:30-10:00pm
Nifkin Lounge**

**Free Coffee by the Coffee Cave
Free Food from Peter's Market
Open mic night**

**Sponsored by:
Alpha Xi Sigma, Recycling Club
and in part by Peter's Market**

In The Near Future...



Wednesday, November 15

Recycling Club Meeting 5:00pm, 241 Illick
Alpha Xi Sigma Meeting, 5:00pm, Nifkin Lounge, Marshall Hall
Yearbook Meeting, 5:30 pm, 22 Bray
Knothole Meeting 6:30pm, 22 Bray
Coffeehaus, 7:30 pm, Nifkin Lounge, Marshall Hall

Thursday, November 16

Baobab Society Meeting 7:00pm, Moon Conference Room
"Creation/Evolution: An Exploration of the Facts" 7:30pm, The Noble Room, Hendricks Chapel, refreshments served

Friday, November 17

"IGF-I Receptor Signaling Mechanisms: Implications for IGF and Insulin Actions."
Dr. Robert Smith, Joslin Diabetes Center Boston, MA 4:00pm (refreshments at 3:30pm),
 Lundgren Room, 304C Lyman Hall

Monday, November 20

USA Meeting 5:30pm, Nifkin Lounge

November 22-November 26 is Thanksgiving Break

Congratulations to the newly elected officers of Gamma Delta Theta:

President - Jessica Roth
Vice President - Missy Petrin
Treasurer - Beth Fertich
Secretary - Courtney Tourisano
Philanthropy Co-Chairs - Autumn Radle and Leeanna O'Grady
Social Chair - Jenny Miller

Publicity - Erin Fitzgerald
Rush Representative - Shelly Gilman
Pledge Educator - Meredith Carlson
House Manager - Margie Butler
Historian - Pam Shedlock
Pan-Hellenic Representative - Amy Liechtenstein

Classifieds

Don't Miss This!! -- Room for rent \$187.50 per month plus utilities. What a steal! Cavernous rooms -- open immediately. Call Mitch, Tyler or Dave at 422-5790.

Classifieds?

Try the Knothole.