

SUNY College of Environmental Science and Forestry

## Digital Commons @ ESF

---

The Knothole

College Archives

---

11-10-1993

### Knothole November 10, 1993 Vol 46 No 10

SUNY College of Environmental Science and Forestry

Follow this and additional works at: <https://digitalcommons.esf.edu/knothole>



Part of the [Communication Commons](#), [Creative Writing Commons](#), and the [Environmental Studies Commons](#)

---

#### Recommended Citation

SUNY College of Environmental Science and Forestry, "Knothole November 10, 1993 Vol 46 No 10" (1993). *The Knothole*. 592.

<https://digitalcommons.esf.edu/knothole/592>

This Newspaper is brought to you for free and open access by the College Archives at Digital Commons @ ESF. It has been accepted for inclusion in The Knothole by an authorized administrator of Digital Commons @ ESF. For more information, please contact [digitalcommons@esf.edu](mailto:digitalcommons@esf.edu), [cjkoons@esf.edu](mailto:cjkoons@esf.edu).



# The Knothole



S.U.N.Y. COLLEGE OF ENVIRONMENTAL SCIENCE AND FORESTRY

November 10, 1993

Vol. 46 #10

## Nature Notes

by Peter Tango

### *Farmin' ain't what it used to be...*

There was a time when you would drive down an old country road, spot a large red barn down in the field, see chickens feeding in the yard, sheep in the pasture, and if cows were around and the wind JUST RIGHT... "perfume-du-cowchips" would awaken your senses! That fine, effervescent aroma could bring tears to your reddening eyes. Ahhhhhh, SWEET COUNTRY! Well, of course this experience has not been lost from our country roads altogether. But a new fashion of farming is on the uprise - Salmon ranching! YEE-HAW! Round-up the horsepower engines and poke on out to the sea!

Picture if you will - 40 miles off the coastline... Not exactly a barn but multiple floating barges are hooked together. It's not pig pens but 90 fish pens attached between the barges. Mile long cables allow the whole floatilla to bob and weave in the wind and currents. Capacity of this floating ranch - about 12 million Atlantic salmon. Estimated production of biomass - 50 million pounds annually! This is an actual 1990's proposal for an offshore fish farm off the coast of Massachusetts.

Salmon are a desirable food fish and a highly prized game

Cont. on p. 6

## New Film Uncovers True Workings of the Media

by Andrew Molloy

Syracusans are fortunate to have an exclusive chance to see a new film highlighting the work of Noam Chomsky on November 13 and 14. The film "Manufacturing Consent: Noam Chomsky and the Media" is an attempt to bring Chomsky's ideas to a widespread audience, something he has been unable to do because of the nature of his critiques of the establishment media in this country, and also for his relentless exposes on the workings of power by the U.S. government here, at home and across the world.

I was first exposed to a book by Chomsky about 5 years ago. That work, "Turning the Tide: U.S. Intervention and the Struggle for Peace in Central America" really laid bare for me our government's ongoing history of brutal occupations, manipulations, and hypocrisies in support of military dictatorships in Central and Latin American countries when they served the interests of the few. He translates the phrases we tend to hear a lot in the media about "protecting our interests", "bringing democra-

cy to country x", and our oft-cited "benevolent actions for the good of other peoples" into on-the-ground reality. The reality, as he states, is quite a bit different than the phrases. "Protecting our interests," means protecting our right to exploit markets and labor in other countries despite the fact, as is most often the case, that the population may be against this. "Bringing democracy" usually means insuring that the government in country x remains amenable to a business climate that allows U.S.-based corporations the freedom to continue extracting wealth. It often boils down to heinous crimes against third world countries who aren't powerful enough to deal with the U.S. on equal footing.

Lest you think he a Soviet pundit, he is probably just as critical of the former Soviet state, comparing them appropriately to the United States in that each has (or had in the case of the USSR) a self-proclaimed domain of rule (eastern Europe for the USSR, "our little hemisphere over here" for the US) over which only approved forms of government are allowed.

Chomsky talks all about this in his many books, and his extensive footnotes and use of government, CIA, and policy papers does well to let-

Cont. on p. 6



**Editor**

Diana Martini

**Business Manager**

Heather Engelman

**Copy Editor**

Rich Rathbun

**Layout/Design**

Diana Martini

**Arts and Graphics**

Lesley Johnson

**Writing Staff**

Rob Barber

Melanie Emerson

Pete Tango

**Technical Staff**

Ken Elkins

**Distribution Manager**

Laura Harris

**Printer**

Steve Darrow

**Advisor**

Patrick Lawler

**Policy/Deadline**

The *Knothole* is the student publication of the State University of New York College of Environmental Science and Forestry. It is published every Wednesday during the school year. **The deadline for submitting pieces for publication is WEDNESDAY, 4:00 pm, of the week before they are to appear. (On disk, The deadline is THURSDAY, 12 noon.)** Letters to the Editor will not be printed unless they are signed. Articles must also contain the writer's name (names will be withheld upon request). The opinions expressed are those of the writer only and do not necessarily reflect the opinions of the paper's staff or anyone else affiliated with the College. We strongly encourage any counterinterviews, articles, notices, suggestions, and new staff members. **The *Knothole* staff meets in Room 22 in the basement of Bray, Mondays at 6:30. Phone: 470-6892.**

# LETTERS

**Letter to the Editor:**

As a member of two organizations on campus, I have used the *Knothole* to inform the ESF community, communicate with members, and advertise events. Every time I have submitted something, it has been altered, I assume to fit the layout. This is understandable, and not knowing enough about news layouts, I defer to the knowledge of the *Knothole* staff most times.

However, this past *Knothole* included an advertisement that I submitted for an upcoming event. This event is sponsored by a USA-funded organization and will take place on the ESF campus. My submission was a half-page ad, and I requested in a note that the ad be published as such. The ad was reduced to a quarter-page ad in the final publication.

I assumed that the *Knothole* must have some policy against half-page ads. The ad, in my opinion, still grabbed attention, so I didn't have a problem, until I found on the back page of the same *Knothole* issue, a half-page ad for an event that did not involve a student organization or ESF.

Will the *Knothole* staff please educate me and any others who might be wondering, what is your policy about advertising?

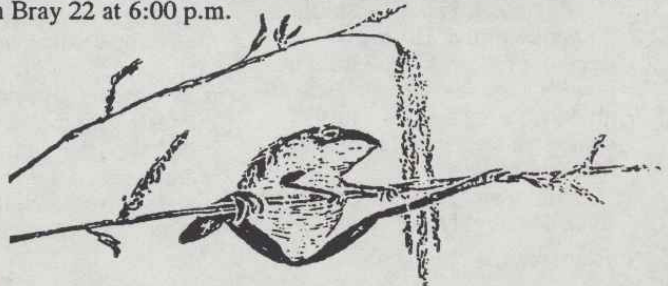
Sincerely,

Melissa Monforti

**Letter to Melissa Monforti from the Editor:**

I would like to extend an apology to you for not following your directions, but I did not have them before me. The reason for this is that we have several (well, actually only a few; we're working on having more) people who type the submissions into our computer and occasionally someone will forget to include the original with the copy that is made for the layout people to use. Such was the case when I completed the layout for the issue to which you refer.

Actually, I'm glad you brought up this issue about not knowing *The Knothole's* policy for advertising because we're just now in the beginning stages of producing a guide for submissions and included in it will be an advertisement policy. Our reason is that as we get more people working on the paper's layout and other functions, we need to have something in writing that effectively communicates procedure to all of us so that we may refer to it in times of uncertainty. If you or anyone is interested in what we have come up with or would like to suggest some of your own ideas, please come to this Monday's meeting in Bray 22 at 6:00 p.m.





## What Does It Do, What Is It Supposed To Do?

by Don Webster, Director of Moon Library and LRC

As the faculty member charged with the administration of the Instructor and Course Evaluation Survey (ICES) and as someone who also served on the committee which developed the ICES, I feel compelled to respond to "What to do, what to do?" by Rich Rathbun, Knot-hole, October 27, 1993.

The Instructor and Course Evaluation Survey is a product of the 1984-85 Sub-Committee on Instructional quality of the Committee on Instruction that was composed of students, faculty and administrators. An earlier survey called the Student Course Evaluation Questionnaire was administered in 1978. This was a product of Alpha Xi Sigma and was only administered once despite the feeling that such a survey was needed on this campus.

The current instrument is a composite of questions from many surveys from other institutions. The purpose of the survey is to provide formative feedback (directed at faculty development) to the instructor and course selection information for students. It consists of 41 questions across four categories: I. Student Characteristics, II. Course Structure, III. Instructor Performance, IV. Laboratory and Studio. The instructor has the option of adding up to ten questions for more information specific to his/her course. There is an additional section for student comments.

Responses to 15 of the 41 questions are extracted and placed on reserve in Moon Library by course number for student use in course selection. Instructors must give their permission to have these fifteen questions placed on reserve, however. Only the instructor and his/her Chair see the com-

plete responses. These responses are not shared with the administration since the purpose of the ICES is instructional improvement, not promotion or tenure decisions. Chairs should monitor these scores and discuss the results with individual faculty members when improvement is indicated.

The Sub-Committee also developed an observation procedure which would have each faculty member observed by a colleague of choice at least once a year. An administrative observation was also recommended. These were never brought to the full faculty for vote. Perhaps this idea should be revisited by the current Sub-Committee since evaluation should represent more than just the student's point of view, as important as that is.

The College has taken a number of other steps as well to improve instruction some of which are: the hiring of a Coordinator for Instructional Development in the Moon Library and Learning Resources Center the Teaching Assistant orientation program, the newsletter *Focus on Instruction*, the Instructional Seminars, a Committee on Assessment dealing with learning outcomes, funding faculty members attendance at Syracuse University's Teaching Seminars, etc. Quality instruction is definitely an institutional goal and one which the administration and faculty share and support.

Does the ICES really help? Is it the "best" instrument for formative evaluation? What is the relationship between formative evaluation for improvement of instruction and summative evaluation for promotion and tenure? The current Sub-Committee on Instructional Quality has a review of the ICES as number one on its 93-94 agenda and the fore-

going question more than likely will receive attention. The questions raised in the column certainly should be addressed except for those concerning the administration since the administration is not a part of the process. If you substitute the word Chairs for administration, it would be a more useful inquiry.

Lastly, I would like to comment on your remark concerning the lack of incentive on the students part to make suggestions for improvement, "after all, you'll never take the course again, besides, isn't it only fair that the next bunch should suffer the same agony as you did?". I'm sure that this was "tongue in cheek" but, what if the instructors took the same attitude about changes in their courses? I don't think so. The ICES provides general feedback and the student comments provide specific feedback.

In closing let me say that your tag "Hey, you never know..." smacks of the lottery. Instruction should not be a lottery, but if it is, let's all do our best to make it a sure thing. We can all win.

### A Story

the boy rushed  
touched her hand  
and said:  
how wonderful you are!

the girl blushed  
lowered her face  
and whispered:  
how wonderful you are!

a story

Azharul Mazumder



## More Letters

Perhaps I can shed some light for men about why the word "chick" has caused such a stir.

This whole issue is not about a name that women don't like. It's about a group of people who have struggled for many years to achieve an equality that is the right of any human being of any race, sex, or religion. It can be applied to any group of people who have had to struggle for the rights that the white male has always had.

Women have come a long way in the fight for equality, and still have a long way to go. When you call a woman a name like 'chick, babe, honey...' it is a reminder of the discrimination we have suffered throughout history, and also suggests that the male who is using the label does not perceive women as equals.

Women have struggled for the common right to vote. Women have struggled to break out of their traditional roles of housewives and secretaries. Women have struggled to be more than just sex objects and make a choice without having to worry about how she will be treated because she is a woman.

The extreme case of discrimination is rape. It has been said that a woman who dresses in a particular way is "asking for it". I have heard this even in our court systems. I have a friend who is a doctor. She was shopping for a new car. One of the perks of a particular car offered to her by the salesman was the spacious trunk ...room for all those groceries. This is a more subtle case of discrimination.

In all life, as well as on this campus, subtle and not so subtle acts of discrimination occur. The extreme cases may be easy to see for even a man, but the subtle ones can go easily unrecognized. They can make the victim feel like an object, and like

someone who doesn't deserve to be equal with men. Discriminatory acts are embedded in our culture. This is what makes them so difficult to recognize and stop. Calling a woman "chick" is subtle discrimination, although one of the more innocent forms. The statement made in the earlier issue of the *Knothole* about the frat dog and "chicks" can not be depersonalized and we are "toughing up" by calling it what it is and not letting it go any further. It is discrimination and it is wrong.

Pam Flynn

This letter is in response to the questions Chris posed in the last *Knothole*: "Is the climate at ESF really hostile for women?" and "Is there an ill-willed, unfriendly, antagonistic climate here for women in what way?" I sent out a survey to all graduate women at ESF in 1990. The women were asked to respond to 55 questions in both comment form and using a scale (very strongly disagree to very strongly agree, never to very frequently, etc.). The following comments and percentages are an attempt to address Chris's questions.

"When I arrived as a new graduate student, and expressed some doubts about whether I had been assigned to the right program/professor, I was asked by a professor in an advisory position whether I was a 'real graduate student or an incipient housewife!!' "

"One of my professors asked a woman in class how much education her mother had because 'women usually go to school as much as their mom!'"

"I have been surprised at the sexist attitudes of some of my peers. They've been worse than the faculty."

84% of the women said they did not have enough women faculty members as role models

and mentors and 61% thought their experience at ESF would have been different if there had been more women faculty. 30% of the women reported that they had been discriminated against by male faculty and 26% had been discriminated against by male students at ESF. 45% of the women reported that male faculty are more likely to question women's intellectual ability or professional potential than male students at ESF. The following table shows the percentage of women that said male faculty and students frequently use sexist language, verbal or physical sexual harassment in and out of the classroom at ESF.

Cont. on p. 5

### ATTENTION! ESF SENIORS! ATTENTION!

Would you like to participate in an honors seminar, working with small groups of students from different programs, under the guidance of faculty mentors, on an environmental problem of both national and local concern?

We plan on offering such an opportunity for the Spring 1994 semester. The topic for the seminar has elements of risk assessment and risk perception, GIS, environmental chemistry, toxicology, national and local environmental policies, land use, population demographics, remediation strategies and should therefore be of interest to ESF seniors in most programs.

Watch this space for more details including how and when to register for the seminar.



Cont. from p. 4

	MALE FACULTY		MALE STUDENTS	
	Class	Out of Class	Class	Out of Class
Sexist language	27%	31%	47%	60%
Verbal sexual harassment	16%	21%	30%	43%
Physical sexual harassment	10%	10%	12%	20%

These comments and numbers portray a climate that is less than ideal for women graduate students and probably by extension, undergraduate women at ESF. The ESF Campus Climate for Women report provides even more examples of behaviors and actions that do not always provide the best learning environment for women.

I am not implying that the campus climate for *all* women or for me personally at ESF is "hostile" *all* the time. Clearly the numbers indicate that some women have never experienced discrimination or harassment by male faculty and students. I just wanted to provide some additional information on the subject of the learning environment for women at ESF.

Carol Griffin

### The Diversity Thing:

As I look at the student diversity issue at ESF I am pleased with the attempts. I call them attempts because that's what I perceive them to be.

Diversity has different definitions for different people. Some may feel diversity is meeting all the quota numbers (54% female, 13% Afro-American, 2% Asian,... (approx. a cross section of the U. S.)). Diversity? I think not! I do think this will improve the comfort level of these underrepresented groups. People have a natural tendency of being uncomfortable when they stand out. Whether that means being dressed in a formal tux at a beach party or being the only person of dark skin in an Ecology class, you will feel uncomfortable being different. Getting the "numbers" to change may help the comfort level of those affected, but it probably won't make ESF diverse. Don't get me wrong, I think this is a great step towards diversity, but it falls short of achieving its purpose.

Some may feel that the campus is already diverse, after all, we do have women, men, heterosexuals, homosexuals, blacks, whites, Asians, conservatives,

liberals, etc. They have the attitude of "Come join us, be one of us, sure its great that you are an Afro-American, but it sure would be nice if you acted more like us". This is not diversity. Sure it might paint the picture of being diverse, but that is as far as it goes.

Well I guess I've put it off long enough, I'll have to give my definition of diversity. I'm sure there are a lot of flaws in my simple definition (remember it is as seen by a blonde haired, blue eyed white male). Diversity: The ability to understand and accept people for what they are. The key word in my definition is accept. Diversity does not just happen with numbers or different people standing in one spot. Diversity is understanding that people can be different in appearance as well as philosophy and accepting it. "Come join us, be yourself with us", may be closer to what I think a diverse campus is.

Now I could give some intellectual stimulation to convince you to treat everyone as equal until you personally prove or disprove that premise, but that is already known by each of us. Is it practiced? I think not. I am probably just as guilty as the next person of not following the

idea.

So where does that leave us? When or what will be the end of this diversity issue? Will it be when the women and men at ESF, "fit in" better? If that's it, what about their heritage? What about their sexual preference or their political viewpoint?

In order to meet the goals of a diverse campus, we need to know when we've achieved it. We are working towards something that we can't even define! Ten years ago the thought of having a diverse student body may have been just to have enough women, blacks, and minorities to take a good picture for the college catalogue; well we've made it by those standards. Again I ask, where does that leave us?

I only wish I knew how to make it better for all of us. NOW!

I've been leaving a lot of unanswered questions in this letter because I don't have the answers. I would like them answered whether it be by an administrator, a student, a faculty member, or some brilliant prophet. Please, this is an issue that involves all of us, help in whatever way you can!

Kevin Hutton, Graduate Student



**Nature cont. from p.1**

fish. But wild salmon stocks are severely depleted in the Atlantic Ocean. Farmed salmon are becoming an increasing part of the available salmon for marketing these days. Sounds like farming the seas is a dandy idea since some 70% of the globe is covered by oceans. But like the cattle yard there are environmental costs. The buildup of wastes, particularly ammonia, can be severe if the currents are not present to dilute them - environmental impacts will need to be evaluated in some regulated fashion. Algal blooms may occur locally due to increased nutrient loading - more problems with eutrophication. Wise site selection may be able to address these potential problems. But perhaps a more difficult question to deal with is, what happens if some or all fish escaped and survived to breed with wild stocks? It's a tad bit difficult to have a salmon round-up if the fish manage to break loose from the fish yards! Dilution of the gene pool for wild salmon populations may ruin the hopes of restoring the native fish stocks to their natural range.

The cost of running boats on the high seas in search of dwindling wild salmon stocks continues to rise. Farming salmon represents one alternative to supplying the fish that we, as a world society, continue to demand. Will it be at the price of biotic integrity? Is the future of our oceans to become filled with a floatilla of fish farms? Can we restore wild salmon populations and regulate fishing efforts to maintain those stocks? Sounds like there's a potential to trade in the *John Deere* tractor for a new *Boston Whaler* in the near future. The air may not smell as "sweet" while riding those waves like a buckin' bronco, but farmin' just ain't what it use to be, either...

**Chomsky cont. from p. 1**

you decide for yourself and go check the sources.

The media is a favorite subject for him. Groups like Accuracy in the Media, as well as conservative think tanks like the Heritage Foundation claim the media is a liberal bastion. Chomsky thinks quite the opposite. He maintains that the media is increasingly being concentrated in the hands of fewer and fewer owners. (Remember a few years ago when General Electric bought NBC?). These owners are very wealthy men; they sit on each other's corporate boards of directors, and they also happen to own and run many of the major corporations. He maintains that it is in these owner's interests that the media allow a certain framing of debates on our foreign policy and the way this country should be run—debates that makes sure nothing interferes with the fundamental right of business to pursue profits as it sees fit. The major dailies and television news shows will knowingly and quite purposefully shape the debate to ultimately serve the owner's interests. What gets reported? What is the slant? Who's interests are benefited by the story? This makes for a really interesting debate and the film lets you in on a more complicated view of the media, with plenty of footage of Chomsky debating with William F. Buckley, the Prime Minister of the Netherlands (I think) and others. He argues his point well; he backs it up with historical facts. I buy it; maybe you will, maybe you won't. What better way to begin to find out than to see the movie? Analysis like this just doesn't get played out in our local Syracuse papers and you may see why not after a look at the film.

Chomsky is also a well-respected linguist and has taught for at least twenty years at the Massachusetts Institute of Technology in Cambridge, Mass. Come see why the New York Times has dubbed him "arguably the most important intellectual alive."

For showing times and places please see the ad elsewhere in this issue of the *Knothole*.



OK GLADYS, SIGN ME UP FOR THE ACTION COMMITTEE,  
... ESCAPE ISN'T WORKING!

**CONGRATULATIONS!!!**

TO

**ANN RUSSELL**

AND

**JEANNE HICKEY**

**The Wildlife Society -  
Boone and Crockett Club**

**1993 OUTSTANDING  
WILDLIFE STUDENT  
AWARD RECIPIENTS**

Thank you for your time  
and keep up the great  
work...

Sincerely,

**The Wildlife Society  
Student Chapter**



I'm seeing myself and the Christian population very under-represented in the, "science and evolution" discussion. By Christian, I mean the born-again population that the Bible talks about. I feel that the word Fundamental has come to mean a person who surrounds abortion clinics militantly, or holds a bible over their head and points an accusing finger at the world. I feel improperly represented and wish to make another side known.

The past articles have spoken of evolution in its proper context. What does that mean? I believe in the survival of the fittest but I certainly do not believe that I evolved from anything, including an ape. I also know that this has never been proven as some would have us believe.

**Religious-** characterized by adherence to religion or a religion concerned with, appropriate to or teaching religion;

**Theology-** the study of God and the relations between God and the universe;

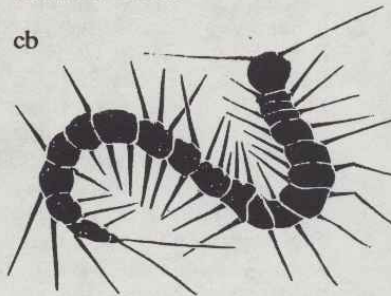
I am religious but so is a Muslim; we are not the same. I hold to a theology but so does a Buddhist; we too, are not the same. The point is that these words are thrown around but everyone is lumped into mass titles that are incorrect. Further, I am not offended but I do take issue with the statement, "creationist views have no place in modern science, being in the same vein as the idea of a flat earth..." Science is not exact as previously stated, but it was science that came up with these preposterous notions, not religion. To explain myself a little let me quote last weeks *Knothole*, "It is most certainly possible to be an evolutionist while at the same time being religious (the best proof of this is that Charles Darwin is buried in West Minster Abbey)." Darwin may certainly have been relig-

ious, though burial in a Catholic chapel is no indication of that, if he died believing he evolved from an ape he does not hold the Christian perspective.

Please remember, I'm not here to offend or defend, only to explain a confused point of view. The Bible does say that without personally accepting Jesus Christ there is no entry into Heaven. I believe this. We as Evangelicals or Fundamentalists also believe that entry into Heaven has nothing to do with how good or bad of a life that you live; but solely on your relationship with Jesus. It disturbs me that God allows it to be possible for a murderer to attain Heaven. It also disturbs me that derivatives exist. I don't understand either of them. The problem with a literal interpretation of the Bible is what it means. That the fact must be faced that there is a God and that we must deal with Him. That there are tough questions that we must deal with like death and faith and "Why me, God?"

The bottom lines? For the most part, evolution has little place in Christianity whether I'm Catholic or Jesuit or... I will not shove my faith down any ones throat but I would like to be accurately represented. My disclaimer - the Christian faith allows a person to spend a life time holding incorrect beliefs about most things without danger of Hell because Heaven is predicated on a relationship with Jesus, nothing else. F.Y.I. - Lisa, Lilith does not exist in the Bible.

cb



## FUN FACT

### THERE ARE MANY WAYS TO RECYCLE

While no state recycles more than they landfill and 195,000,000 tons of garbage was generated in 1990 (up from 179.6 millions tons in 1988) the Cleveland Company has found a way to close the loop even after landfilling. They have developed technology to refine the carbon dioxide, various contaminants, and methane, gases emitted from landfills due to decomposing "garbage", into liquid natural gas and use it to power a fleet of garbage trucks. Acron Technologies and Consolidated National Gas Company plan to refine the tanks to accommodate the new fuel within three years. A five million ton landfill (quite common) can provide enough fuel for 200 trucks or 3,600 cars per day, according to the president of Acron Technologies. Methane, once a problem, has now become a resource.

**THINK CREATIVELY FOR OUR FUTURE!**  
**RECYCLING CLUB**  
**MEETINGS 6:00 PM**  
**WEDNESDAY 127 ILLICK**

## Gamma Delta Theta News

There will be a **Thanksgiving Food Drive** from November 15 - 22. All canned and boxed food is welcome. All of the donations will go to help needy people right here in the Syracuse area. The pledges went trick-r-treating and came up with a big surprise-their big sisters!

We are all busy making plans for our semi-formal. Thanksgiving dinner is also right around the corner. Where does the time go?

Jen



## GRADUATE STUDENT UNION FORUM

Today starting at 4:15 in Nifkin Lounge we will have the opportunity to hear how about the progress of the Graduate Student Employees Union (GSEU). Believe me, I know everyone is too busy, with classes, teaching and research, but take some time to attend this forum. If you have concerns about your contract as a TA or GA, stipend, benefits, expectations, requirements, etc.; you should be there. Even if you are not currently a TA, but think you might be during your time at ESF, you should be there. If you are now an RA, and don't ever intend to support yourself with a TA, you should be there, as the RAs may eventually be part of the bargaining unit. If you are a graduate student, concerned about the environment for graduate studies at ESF, you should be there. Does that leave anyone out?

Maybe you don't think a union for graduate students is a good idea. Maybe you are concerned that we would lose more than we gain. Maybe you think it will be detrimental to set up a "Labor/Management" relationship with the SUNY administration. Maybe you are wondering how we can organize a union around a group of people who generally spend only 2 to 5 years on campus. Well, I'm wondering about some of those things myself. But I'll tell you, this is going to happen, with or without your participation. So you can either get involved, voice your concerns and hopefully make a difference; or you can stay hiding in that hole of an office and wait for the rest of us to make decisions about how your graduate student employment will work. Today and through next week, we at ESF will be starting the process of formalizing our campus's involvement in the unioni-

zation process. The first step is to elect a campus representative to the Executive Council of GSEU. A nomination box is in Moon Library. Please take the time to nominate someone, or yourself, to represent this campus. That's the only requirement, a graduate student who is willing to represent our views to the Executive Committee. Duties will include: attending meetings in Albany two weekends a semester, and acting as the on campus contact person for union issues. The next Executive Committee Meeting is next weekend, so the GSA has appointed an interim representative - Kevin Hutton, until we can elect someone. The nomination box will also be available at the forum this afternoon. I hope you all can make it!

Win Everham  
301 Illick Hall  
470-6812

### Bike Registration Stickers Are In!

These people have bike registration stickers to be picked up at the Public Safety Office 19 Bray Hall.

John Allen, Leroy Allen, Daniel Ardia, Felicity Arengo, William Brosseau, Walter Bailey, Eric Bishop, Elizabeth Burnill, Dean Brammer, Christopher Brown, Matthew Benedict, Franco Capparelli, Mary Ellen Cardillo, Kelly Carey, Ty Carsto, Thomas Chairvolotti, Lawrence Clegg, Fred Clinton, Anthony Cognato, Mark Colby, Aimee Delach, Laurie DeLucia, Patrick Dineen, Jeannette Dadusc, Sean Devine, Suni Edson, Christine Earley, Carol Edelstein, Scott Elliott, Michael Emery, Chad Everett, Chris Figaretti, Christopher Fox, John Fraser, Scot Gilbert, Joshua Gillespie, Jeffery Gladwin, Kurt Glasier, Kenneth Gleason, Greg Grigsby, Bernadette Grullon, Dean Hackett, David Herodes, Steven Herchenhorn, Ann Hotaling, Patrick

Jacuzzo, Robert Jankowski, Thomas Kariz, Heather Karl, Brenda Kelly, Michael Keys, Brain Kiernan, Elizabeth Kilmarx, Allison King, Andrew Lamendola, William LaRose, Edward Lavelle, Michael Lewis, Kirk Linder, Melinda Lo, David LoPiccolo, John Luciano, Michael Lumbis, Russel Martin, Lisa Meehan, Rodrigo Migoya, Darryl Murdock, Laura Musacchio, Katherine McConvey, Heather McKinley, Mychelle McNeil, Chawn O'Dell, Barbara O'Dwyer, Jennifer Ostrowski, Steve Ovellette, Janice Patz, Dan Pease, Linda Pina, Kenneth Podsiadlo, Gil Pontius, Karen Rapelje, Deborah Richardson, Robert Ruggiero, Nicholas Sagalkin, James Sanford, Mark Schlemmer, Katherine Scholl, Robert Schmidt, Kirstin Seleen, Elizabeth Seus, Timothy Severance, Scott Sheeley, Doug Shepard, Doug Smith, Vincent Sorbello, Thomas Snow, Todd Sparkes, Joseph Staples, Scott Swezey, Suresh Subramanian, Steven Taylor, Amy Titus, Kellie Tyler, Jan Vanhatten, Pamela Veach, Victor Virimala, Andrew Walter, Michael Welych, Brian Whipple, Clarence Wilmot, James Worral, Drew Young, Jennifer Zelenke, John Zupko Jr.

### REMEMBER:

- 1) Always lock your bike.
- 2) PublicSafety(470-6666) Room 19 Bray Hall 24 Hrs/day has bike locks to loan and the key to the bike cage.
- 3) Please use only the bike racks, No Railings, Trees, etc.
- 4) No bikes in the buildings -- it is a fire Hazard.
- 5) Be observant. Contact Public Safety if you spot a problem.
- 6) Last Bike Stolen on the ESF Campus Sunday 10/24/93 at 8:00 pm from Illick Quad Bike Rack.



## A Leer by Any Other Name

Sexual harassment has come into its own in the 1990's. Beginning with Clarence Thomas and Anita Hill, the United States became aware of what was going on in businesses, schools, and public places. Because of one woman's courage to speak out, those being harassed, both men and women, came forward with their own tales of abuse. American society took a giant leap towards a time when sex can't be used as power.

In 1993, it seems that we have become bogged down in an endless mire of definitions and regulations. At the forefront of this sticky debate is what exactly does sexual harassment entail? For the most part, people agree on the overt forms of sexual harassment: a boss wanting sex for a raise, an unwanted pinch or pat on the breast or buttock, lewd suggestions by a co-worker. These are the glaringly visible examples. But what else is there? Would you consider a look sexual harassment? How about a dirty joke? A complement? Don't look now, but Syracuse University's new policy on sexual harassment has decided for you.

According to this policy that was ratified a few weeks ago, a leer or ogle, a touch or a fondle, and an overt suggestion all fall into the same category. If you feel that your environment is being infringed upon by any individual in any of the above ways, you can press charges. When I say any person, I mean you. S.U.'s policy extends to student-to-student interactions. The realm of sexual harassment is no longer the domain of the Person in Power.

Before you put this down and dismiss these policies as only applying to S.U. students, take a moment and think. What if it

doesn't? Many of us live in S.U. housing or take classes over there. We could easily be the accused or the accuser. S.U. states that any such case involving an undergraduate as an accused offender shall be treated in the manner reserved for a case where the crime is a non-consensual sexual activity; a rape, in so many words. I may believe in strong policies for dealing with sexual harassment, but to equate leers with rape is to belittle those who have been the victim of rape.

Graduate students shouldn't feel left out. This policy mentions you, too! Have a significant other who T.A.'s at S.U.? You shouldn't ever take a class from him or her. That's a conflict of interests. The T.A. involved has to notify his or her major professor who will then notify his or her supervisor, who will then form a committee to investigate the situation. The committee will assume from the outset that all relations between T.A. and student are non-consensual.

What I have just laid out is simply a fraction of what is contained in the eight page document released by Syracuse University. Although these policies are not a major concern for ESF students now, they could be sometime down the line. It has not been decided whether or not these policies extend to those ESF students who live in S.U. housing or attend classes at S.U. We should have a say in how S.U.'s policy will affect us. We should be aware of the changes taking place on both campuses. If we are not, the next time you leer at the blond in your dorm hall, you might end up in front of a judicial hearing.

## Narnian Chronicles of Kappa Phi Delta

Well, hello all. I should warn you now that this article is not for the thin skinned. If you are easily offended, please don't read any more of this article.

Well, what has been going on at Kappa Phi? The Onondaga Recycling Man recently toured all of the Fraternity and Sorority Houses of SU and he said that we have the best recycling facilities! Way to go Roger; Hail the Trash Picker!

Waldo and Billy Roome are looking into refinancing the house. If they succeed we can paint the outside of the house this spring.

Razor recently brought the house up to speed with the local fire code ordinance by having all of our fire extinguishers inspected and refilled.

This past weekend we had our annual Alumni Pig Roast. We had a fair turnout. Our retired house mascot, Astro made a special celebrity appearance. The pledges did a great job of cooking the pig and entertaining the Alumni.

We also had a stray dog show up on our porch. Smolt has adopted it until the rightful owner can be found. The dog is black, about 50 pounds, male, and has a white spot on his chest. He has no collar, answers to no name in particular, but does appear to be house trained. We are calling him "Spot." If you have any idea whose dog this is, please call 442-9188 and ask for "WALDO."

Well, thanks for reading.

Have a Great Day,  
Smertz



## ALPHA XI SIGMA NEWS

Hey, all you eligible members out there! You're missing out on a whole lot of fun! If your cumulative average is 3.21 or higher, come to a meeting, and join in the fun!

Our next meeting is Wednesday, November 17th at 5:30 p.m. in Bray Rotunda. We'll be getting organized for a Bake Sale AND a Coffee House. (For those of you who attended the "Reading Hour," we've changed the name to "Coffee House!") Also, we're getting started on College Bowl. The purpose of all events is to serve the ESF community, and help is needed to pull these things off successfully.

You say you can't make meetings? Well, try your best, but if you can't come, and you want to be involved, here's how. Leave a note in the AXS mailbox in the basement of Bray explaining why you can't make meetings. THEN, read the notes from meetings you miss- they're on reserve in Moon Library under ALPHA XI SIGMA. If you read about some events you'd like to help out with, call one of the officers for more info. (Officers' numbers are in the reserve folder.)

Hope to see you at our next meeting-  
Wed., Nov. 17th at 5:30 p.m. in Bray Rotunda!

### WHAT'S ALL THIS I HEAR ABOUT NAFTA ?

NAFTA is the North American Free Trade Agreement! If you've heard about it lately, that's because it's one of the most pressing issues in Congress right now. In fact, Congress will be voting about NAFTA in just two weeks.

*So what's this got to do with me?*

NAFTA would essentially open the borders of Canada, US, and Mexico to free trade, meaning that companies can set up camp anywhere in North America and trade freely as if there were no borders. How this arrangement will affect American commerce and YOU is a matter of debate. Some people feel that it will stimulate the economy; others feel it will transfer American jobs to other countries. There are also issues surrounding environmental issues and employee safety.

*Wow! How can I learn more about NAFTA?*

### COME TO THE NAFTA SYMPOSIUM!

SEAC, the Student Environmental Action Coalition, in conjunction with the Environmental Law Society at the Syracuse College of Law is sponsoring a symposium on NAFTA to help educate everyone about the issue. Speakers include representatives from the following organizations or interests:

- Local business
- Sierra Club
- Syracuse Greens Party
- Earthwise Education Center (agriculture perspective)
- Fair Trade Coalition
- International Law

Each speaker will address the audience for 8-10 minutes, and after all speakers, a question and answer period will follow.

*Yeah! I want to go the NAFTA Symposium!*

I knew you would! Here's the info- see you there!

### NAFTA SYMPOSIUM

WED, NOV. 10TH  
7:30 P.M.  
MARSHALL AUD.



*INSPIRED BY William S. Burroughs*

*Basking in the pool of melting dice  
Dripping from the rearview mirror  
I wonder how many kilos of butter the Chinese man would want to buy  
He stands sitting with green skin, aged to its corned and callused perfection*

*Count the eyes of the watchers  
They extract lung juice with every passing breath  
Slippery toads shrivel with injections of passionate fumes  
Shrinking into doorways of forgotten flavors*

*Shrieks of cackling laughter penetrate every orifice  
Meeting in stomach pits  
Dancing with nauseous reverie  
Around spewing wounds*

*The Chinese man says "6 grams, but later"  
She concludes his height was once locked in a box  
Fingers fall into woolen pockets to find rubber strings  
And needles  
And spoons  
And vials*

*Stench rises from the pool of ivory dice, sweat and blackened dots  
Rotating in pschydalic time  
Speed  
Junk  
Coke  
Crack  
Dope  
Weed  
Velocity  
Trash  
Pepsi  
Split  
Dumb  
Herb*

*Just words of indefinite definition  
And the Chinese man blankly smiles*

*-M. F. Emerson*

**The December Soiree!!!**

Soon the traditions of ESF will blow away like the wind for the seniors not coming back for graduate work. No more quad, hackey-sack, Nifkin... In its place will come a chance to finally reach for the dreams they've so long prepared for. So, in honor of them,  
**Come Celebrate!!!**

Why attend the Soiree? How about things like Chicken Paprikash (whatever that is), Prime rib, Broiled Salmon Fillet, Pasta Primavera, Double Chocolate Mousse... Perhaps starting the evening off around 6:00pm with Cocktails. Dinner at 7:00, an honoring of the December graduates and then, "Let the dancing begin!"

Here are some common questions answered:

\*Do I need a date?

Of course not, just a smile will do!

\*What is the dress?

Semi-formal to formal will do just fine at the Soiree.

\*How do I get there?

Transportation will be provided to and from the OnCenter. Parking will be available.

\*Why should I go?

Because the Soiree is a good time. It's a chance to get together as a campus all dressed up and relax. Everyone should attend! No matter your class standing, come and enjoy the evening!

**Tickets go on sale November 8th through the 12th in Small Stores. Sales continue in Marshall Foyer from the 20th to the 20th. Tickets are \$10.00 for undergrads and \$20.00 for grads, family and friends.**



## Calendar of Events

Wednesday, November 10th

**The Recycling Club** meeting in 127 Illick at 6:00 p.m.

**NAFTA Symposium** sponsored by Student Environmental Action Coalition in Marshall Auditorium at 7:00 p.m.

Thursday, November 11th

Speaker Dr. Maggie Shannon in 203 - Maxwell Conference Room at 12 noon. Dr. Shannon, a member that developed President Clinton's Forest Plan, will speak on: "From Daniel Boone to Jack Lord Thomas: Using a Geological Metaphor to Understand Natural Resources Law".

**The Baobab Society** meeting/potluck dinner at Gigi's house at 7:00 p.m.

Saturday, November 13

Film "Manufacturing Consent: Noam Chomsky and the Media" at the Everson Museum at 3:00 and 7:00 p.m. Also, being shown on Sunday at Shemin Auditorium, Shaffer Art Building, SU. Tickets are \$2 w/student ID, \$5-15 sliding scale w/out ID.

A COURSE IN INTELLECTUAL SELF-DEFENSE

# MANUFACTURING CONSENT

## NOAM CHOMSKY AND THE MEDIA

WINNER OF NINE INTERNATIONAL AWARDS

★★★★★  
—Jami Bernard,  
NEW YORK  
POST

"A FEAT. DRAWS YOUNG AND OLD  
AND HOLD THEM RAP"

—Georgia Brown, VILLAGE VOICE

"MEMORABLE... INVALUABLE"

—Stuart Klawans, THE NATION

"A MOST  
PROVOCATIVE,  
INVIGORATING  
COMMENTATOR...  
(CHOMSKY) TALKS  
WITH EASE,  
CLARITY  
AND WIT"

—Vincent Canby,  
NEW YORK  
TIMES

RELEASED BY *Zortgeist*

"EYE-OPENING, MIND-EXPANDING ENTERTAINMENT  
AT ITS FINEST. A MAJOR ACHIEVEMENT"

—Jeff Menell, HOLLYWOOD REPORTER

A FILM BY MARK ACHBAR & PETER WINTONICK

An event of the Syracuse Peace Council, call (315) 472-5478 for details

**A Syracuse Exclusive!**  
**Saturday, November 13**

3pm & 7pm

Everson Museum,  
corner of S. State St. & Harrison  
Tickets are \$5-\$15 sliding scale.

Family rates are available.

**Sunday, November 14**

3pm

Shemin Auditorium,  
Shaffer Art Bldg, SU  
Tickets are \$2 w/student ID,  
\$5-\$15 sliding scale w/out ID  
As the years go by Noam Chomsky may look more and more like Woody Allen but he stubbornly keeps as far as ever from the entertainment business. Still, Chomsky does have a shtick, bless him. And now two Canadian filmmakers, Mark Achbar and Peter Wintonick, have accomplished the improbable: outfitting the dour, pertinacious prophet in a sprightly, beribboned package.

Georgia Brown, Village Voice

