

COMPOSITION DESIGN AND PHYSICAL PROPERTIES PREDICTION OF MOLD FLUX FOR CONTINUOUS CASTING OF HIGH Mn-HIGH AL STEEL

Received – Priljeno: 2021-05-10

Accepted – Prihvaćeno: 2021-08-15

Original Scientific Paper – Izvorni znanstveni rad

The deterioration of CaO-SiO₂-based mold flux caused by the reaction of steel-slag interface is a bottleneck restricting the high Mn-Al steel continuous casting production efficiently. Therefore, the development of low-reactivity mold flux has become a research hotspot. In this paper, the scheme of high Al₂O₃ and low SiO₂ was adopted to suppress or reduce the occurrence of steel-slag reaction. Drawing binary phase diagram of mold flux based on the CaO-Al₂O₃ composition, the influence of different solvents on the melting characteristics of the mold flux were investigated and the reasonable mass ratio of CaO/Al₂O₃ and the content of SiO₂, SrO, MgO, Na₂O and B₂O₃ were determined. According to the viscosity and the melting temperature model calculation, the physical property is beneficial for the composition design of low-reactivity mold flux.

Keywords: high Mn-high Al steel, continuous casting, viscosity, melting temperature, physical property

INTRODUCTION

High Mn-high Al steel is a typical steel with low density, high strength and ductility. The chemistry of the mold flux is important, which affects heat preservation and insulation, protects the molten steel from oxidation, provides optimum lubrication, controls the heat transfer from the steel, and removes inclusion [1]. However, the high content of Al in liquid steel may easily react with SiO₂ in the traditional CaO-SiO₂-based mold flux during the continuous casting process, which resulting in the decreasing of the mass fraction of SiO₂ in liquid slag and the increasing of the mass fraction of Al₂O₃.

The composition of mold flux during the casting process is changed significantly due to the reaction of the element of Al in steel with the SiO₂ in the flux, which may influence the crystallization behavior as well as thermal and physical properties such as the heat transfer and viscosity of mold flux. All that destroys the lubrication and heat transfer conditions in the slag channel, leads to casting billet cracks, depressions and slag entrapment, and even breakout accidents [2].

To overcome the above difficulties caused by the CaO-SiO₂-based mold flux during high Mn-Al steels and other TRIP steel grades with high content of Al continuous casting process, metallurgical scholars tried to develop the CaO-Al₂O₃ based mold flux, and research of

influence of the types and proportions of additives on the physical properties of mold flux were carried out [3 - 6]. In this paper, with analyzing CaO-SiO₂-Al₂O₃ phase diagram, surveying lots of literatures, analyzing the melting changing law influenced by the content of MgO and B₂O₃ through thermodynamics calculation, CaO-Al₂O₃ based mold flux with low SiO₂ content for the high Mn-high Al steel was proposed, the ratio of CaO/Al₂O₃ and the content SiO₂, the other additive mass ratio were determined.

DESIGN OF LOW REACTIVITY MOLD FLUX SYSTEM

Selection of base material

As shown in Figure 1 of CaO-SiO₂-Al₂O₃ phase diagram, there are two areas of lower melting point tem-

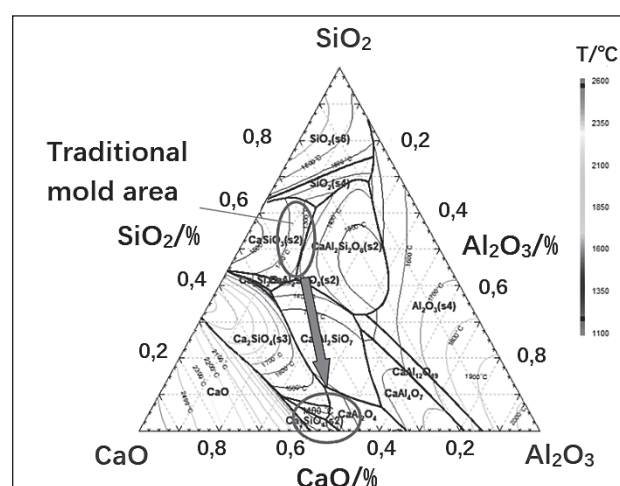


Figure 1 Phase diagram CaO-SiO₂-Al₂O₃ system

J. Y. Hu, L. H. Feng (fenglianghua1974@126.com), Y. Liu, School of Materials and Metallurgy, School of Materials and Metallurgy, University of Science and Technology Liaoning, Anshan, 114051, Liaoning, China; State Key Laboratory of Marine Equipment and Applications, Anshan 114009, Liaoning, China.

X. W. Liao (13050097509@163.com), W. Kang, State Key Laboratory of Marine Equipment and Applications, Anshan 114009, Liaoning, China; Ansteel Iron and Steel Research Institute, Anshan 114009, Liaoning, China.

perature. The upper area is the region of the Wollastonite of higher CaO-SiO_2 and less Al_2O_3 content, which is used widely for the traditional mold flux.

For CaO-SiO_2 based flux, the precipitates are mainly CaSiO_3 , and the melting temperature is about $1\ 300\ ^\circ\text{C}$. Due to the higher SiO_2 in the mold flux reacting with Mn and Al element in the steel and leading to the deterioration of mold flux, this slag system is not suitable for high Mn high Al steel continuous casting process. The other area of low melting point temperature is of higher $\text{CaO-Al}_2\text{O}_3$ and less SiO_2 . For this mold flux system, the precipitates are mainly Ca_2SiO_4 , and its melting point temperature is about $1\ 400\ ^\circ\text{C}$. Owing to less SiO_2 , the serious steel-slag interface reaction can be avoided, so the $\text{CaO-Al}_2\text{O}_3$ based mold flux can be selected for the high Mn high Al steel continuous casting.

DETERMINATION OF BASE MATERIAL

The ratio of $\text{CaO/Al}_2\text{O}_3$

The ratio of $\text{CaO/Al}_2\text{O}_3$ determines the mold flux melting temperature and slag film thickness during cooling process, which influences the heat transfer of mold flux. X. J. Fu[3] found that the slag film thickness was 2,36 - 3,24mm when the ratio of $\text{CaO/Al}_2\text{O}_3$ is 0,7 - 2,0, and the minimum slag film thickness was 2,36mm when the ratio of $\text{CaO/Al}_2\text{O}_3$ was 1,5. Figure 2 is the $\text{CaO-Al}_2\text{O}_3$ two phase diagram, it shows that the melting temperature reaches the lowest when the value of $\text{CaO/Al}_2\text{O}_3$ is equal to 1, where, the precipitated phases are $\text{Ca}_3\text{Al}_2\text{O}_6$ and CaAl_2O_4 . Considering the solidification characteristics of high Mn-high Al steel, the ratio of $\text{CaO/Al}_2\text{O}_3$ should be nearly 1.

The ratio of SiO_2

The existing of SiO_2 will strengthen the steel-slag reaction, but a small amount of SiO_2 is necessary. Zhu[5] proposed that the SiO_2 content less than 2 wt.% and $(\text{Al}_2\text{O}_3 + \text{CaO}) > 50$ wt.% would inhibit strong reducing elements from being oxidized and entering to the mold flux. The patent of a high Mn-high Al steel [6] shows that the steel-slag reaction is weak if the SiO_2

content in the mold flux is less than 7 wt.%. Overall, for the low reactivity $\text{CaO-Al}_2\text{O}_3$ based mold flux, the SiO_2 content should be within 7 wt.%.

DETERMINATION OF LOW-REACTIVITY

Mold flux additive

For the $\text{CaO-Al}_2\text{O}_3$ based mold flux, B_2O_3 is added into the mold flux and Borate forms, whose structure is similar to structure of silicate to compensate the decrease of the vitrification and flow performance resulting from the reduction of SiO_2 .

CaF_2 is a common addition of mold flux, but a large amount will cause the precipitation of high melting point substances and increase the crystallization temperature of the mold flux. In addition, fluoride is a kind of pollution element to the environment. Yu [4]' research showed that CaF_2 content should be 5 % - 8 % for the low reactivity $\text{CaO-Al}_2\text{O}_3$ based mold flux.

Na_2O , Li_2O , BaO , SrO and MgO may serve primarily as a fluxing agent to control viscosity and melting temperature. Wang's research [7] showed that the crystallinity of the mold flux was deteriorated if the content of Na_2O more than 2 %. Li_2O is also an important flux, which can significantly reduce the melting temperature and viscosity of the mold flux, but its price is relatively high. Dong[8]' research showed that SrO and BaO played a similar role on adjusting the mold flux viscosity and melting property, but SrO ' effect was better than BaO .

In summary, the additives of $\text{CaO-Al}_2\text{O}_3$ based mold flux are CaF_2 , Na_2O , SrO , MgO and B_2O_3 , the ratio of the first three components is determined based on literatures. The following content of this article focuses on the influence of the ratio variation of MgO and B_2O_3 on liquid region of $\text{CaO-Al}_2\text{O}_3\text{-SiO}_2$ phase diagram, then the changing law of melting point temperature are discussed.

Determination of MgO content

When the ratio of MgO in the mold flux changes from 0 % - 8 %, the phase diagram at $1\ 300\ ^\circ\text{C}$ was pictured respectively with the thermodynamic FACTSAGE software used. as shown in Figure 3. The region encircled by the red line in the diagram represents the liquid phase zone below $1\ 300\ ^\circ\text{C}$. There are two liquid zones below $1\ 300\ ^\circ\text{C}$ when the content of MgO is 0 % or 3 %, but the area of upper region reduced when the content is 3 %, and disappeared when the content of MgO is 5 % and 8 %. The area of lower region is gradually expanding with the increasing of MgO content. This phenomenon means that the melting temperature of the mold flux increases with the content of MgO increasing. The literature [9] indicated that for non-reactive mold flux with more than 6 % MgO , a large amount of Mg^{2+} will increase the degree of polymerization of the mold flux and make the mold flux viscosity increase sharply. Therefore, the content of the MgO in $\text{CaO-Al}_2\text{O}_3$ based mold flux should be less than 6%.

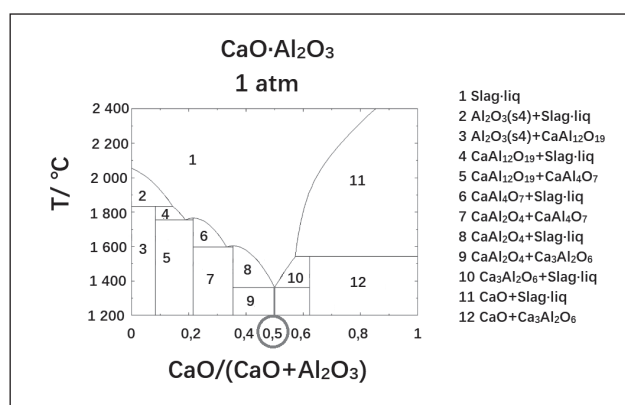
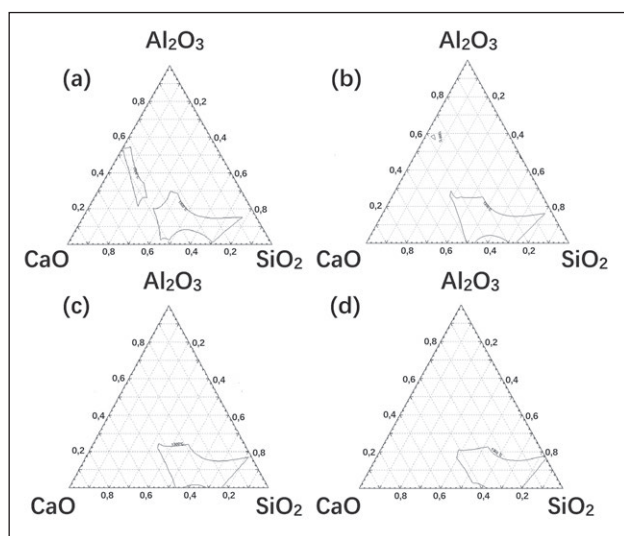
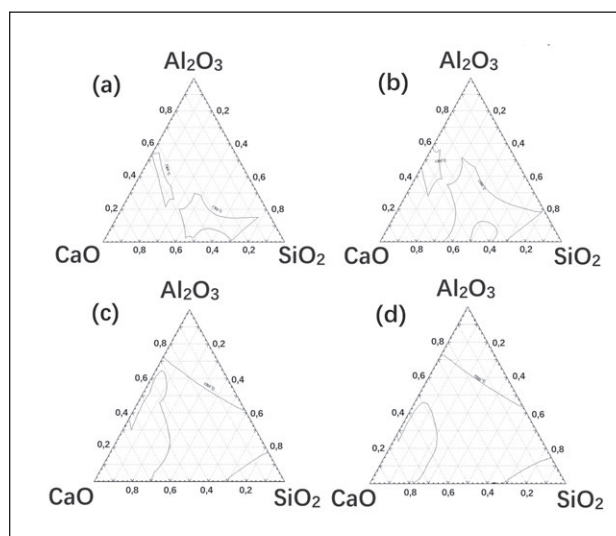


Figure 2 Phase diagram $\text{CaO-Al}_2\text{O}_3$ system



(a) 0 % MgO, (b) 3 % MgO, (c) 5 % MgO, (d) 8 % MgO
Figure 3 Isothermal section diagram of different MgO content at 1 300 °C



(a) 0 % B₂O₃, (b) 4 % B₂O₃, (c) 8 % B₂O₃, (d) 12 % B₂O₃
Figure 4 Isothermal section diagram of different B₂O₃ content at 1 300 °C

Determination of B₂O₃ content

B₂O₃ is commonly used to adjust the viscosity of CaO-Al₂O₃ based mold flux. However, B₂O₃ reacts with Al element in the steel easily. Therefore, it is necessary to obtain the critical content of B₂O₃ in mold flux to avoid steel-slag reaction. Yu[4] studied CaO-Al₂O₃ based mold flux containing 4 % - 10 % B₂O₃, and found that mold flux with 6 % B₂O₃ had a weak slag-steel reaction. Here, When the ratio of B₂O₃ in the mold flux changes from 0 % - 12%, the phase diagram at 1 300 °C was pictured respectively with the thermodynamic Factsage software used, as shown in Figure 4. There are two liquid zones below 1 300 °C when the content of B₂O₃ is 0 % or 8 %, but the area of lower region increases with the content of B₂O₃ increasing, and integrates with the upper region gradually. That means that the increasing of B₂O₃ can improve the melting performance of the mold flux. Considering the reactivity and physical property requirements of high Mn-high Al steel mold flux, the content of B₂O₃ should be about 6 %.

PHYSICAL PROPERTY PREDICTION OF MOLD FLUX

Based on the above analysis, the composition of mold flux for high Mn high Al steel mold flux and the content range of the each component are listed in Table 1. In order to evaluate the melting and viscosity performance of the this mold flux system, the melting temperature and the viscosity calculated with equation (1) and (2) [4] respectively. The melting temperature is 1 133,95 °C - 1 199,35 °C, viscosity value is 0,038 Pa·s - 0,137 Pa·s.

$$T_s = 1293 - 8 \times w(B_2O_3) - 13 \times w(Li_2O) - 6 \times w(Na_2O) - 5 \times w(SrO) - 1,5 \times w(BaO) - 1,8 \times w(F^-) + 2 \times w(MgO) + (w(Al_2O_3) / w(CaO) - 0,966)^2 \times 300 \quad (1)$$

Table 1 **Composition of mold flux designed / %**

Component	CaO/Al ₂ O ₃	SiO ₂	Na ₂ O	SrO	CaF ₂	MgO	B ₂ O ₃
Content	1	7	2	5 - 15	5 - 8	0 - 5	6

$$\eta = MT \exp\left(\frac{N}{T}\right) \quad (2)$$

where

$$M = \exp(-6,431 + 2,361X_{Al_2O_3} - 8,136X_{CaO} - 0,01X_{Na_2O} - 0,003X_{CaF_2})$$

$$N = -398X_{CaO} - 6032,239X_{CaF_2} - 3645,393X_{Na_2O} + 485X_{Al_2O_3}$$

where

$$X_{Al_2O_3} = X_{MgO} + X_{BaO} + X_{SrO} + X_{Al_2O_3}$$

$$X_{Na_2O} = X_{Na_2O} + X_{Li_2O}$$

$$X_{CaO} = X_{CaO} + X_{B_2O_3}$$

X percentage of moles of different components in the liquid slag
 T temperature

CONCLUSION

In this paper, the composition region of CaO-Al₂O₃ based mold flux system is determined based on the literature and phase diagram analysis, the melting and viscosity performance evaluated with empirical formula used, the final conclusions are as follows,

(1) To avoid SiO₂ in the mold flux reacting with the Al element during in mold flux, CaO-Al₂O₃ based mold flux with 6 % SiO₂ and the ratio of CaO/Al₂O₃ equal to 1 is suitable for the high Mn-high Al steel continuous casting process.

(2) The ratio of SrO, Na₂O, MgO, B₂O₃ and CaF₂ is 5 - 15 %, 2 %, 0 - 5 %, 6 % and 5 - 8 %. The melting

temperature and the viscosity value of the designed mold flux is 133,95 °C - 1 199,35 °C and 0,038 Pa·s - 0,137 Pa·s, which can meet the requirement of the high Mn-high Al steel continuous casting process.

Acknowledgements

The authors appreciate gratefully the support of the State Key Laboratory of Marine Equipment and Applications - University of science technology Liaoning united Fund (HGSKL-USTLN(2019)03), Liaoning Province Natural Science foundation(2019-ZD-0271), and the Department of Education of Liaoning Province (2020LNJC03).

REFERENCES

- [1] K. C. Mills, A. B. Fox, Z. Li, and R. P. Thackray, Performance and properties of mould fluxes [J]. *Ironmaking & Steelmaking*, 32(2005)1, 26-34.
- [2] Wang W., Blazek K., Cramb A. A Study of the Crystallization Behavior of a New Mold Flux Used in the Casting of Transformation-Induced-Plasticity Steels [J]. *Metallurgical and Materials Transactions B*, 39(2008)1, 66-74.
- [3] X. J. Fu, G. H. Wen, P Tang, et al. Effect of CaO/Al₂O₃ ratio on crystallization behavior of CaO-Al₂O₃ based mould fluxes for high aluminum TRIP steel [J]. *Ironmaking and Steelmaking*, 41(2014)1, 342-349.
- [4] Yu X. Basic research on mold flux for high-aluminum steel continuous casting[D]. Chongqing University, 2011, pp. 71-86.
- [5] Zhu Z. M., Zhang C., Cai D. X., etc. A continuous casting mold flux for high-aluminum steel and its manufacturing method, China patent No. 200710042540 (31.12.2008).
- [6] Wang W. L., Huang D. Y., Gao E. Z., et al. A high manganese and high aluminum steel mold flux containing ferric oxide and its application, China patent No. 201710793245.8 (01.11.2019).
- [7] H. Wang, P. Tang, G. H. Wen. Effect of Na₂O on crystallization behavior and heat transfer of high Al steel mould fluxes [J]. *Ironmaking and Steelmaking*, 38(2011)1, 369-373.
- [8] Dong L. Y., Wei Q. C. Researches on Melting point and Viscosity of Mould Fluxes Containing SrO [J]. *Journal of Chongqing University*, 5(1999)1, 3-5.
- [9] Hou P. T., Wang L. J., Liu S. Y., et al. Influence of MgO content on the thermo-physical properties of CaO-Al₂O₃-MgO-FexO-SiO₂-K₂O slags [J]. *Chinese Journal of Engineering Science*, 2(2017)1, 215-221.

Note: D. Nie is the master degree candidate and responsible for English language.